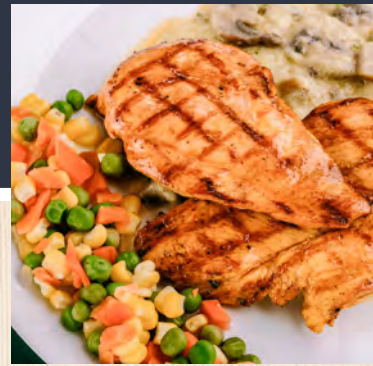


# PICNIC BUFFET MENU



DITCH THE DINING ROOM THIS SEASON AND TAKE IT OUTSIDE! OUR BEST PICNIC IDEAS WILL HELP YOU ENJOY EVERY MINUTE OF THESE GLORIOUS WARM DAYS.

## FAMILY PICNIC

### CHOICE OF 2 ENTREE:

HAMBURGERS OR HOTDOGS  
PORK OR CHICKEN BBQ WITH FRESH BUNS, COLE  
SLAW AND HOT SAUCES  
FRIED OR GRILLED CHICKEN  
BABY BACK RIBS

### CHOICE OF 2 SIDES:

BAKED BEANS  
COLE SLAW  
POTATO SALAD  
PASTA SALAD  
CHIPS  
GREEN BEANS  
BUTTERED CORN  
CORN ON THE COB WHEELS  
COLLARD GREENS  
SEASONED POTATO WEDGES

SERVED WITH SOFT DINNER ROLLS OR CORN BREAD

**\$12.95 PER PERSON**

PLUS MEAL TAX AND SERVICE CHARGE

## PARTY PICNIC

### CHOICE OF 3 ENTREES:

HAMBURGERS OR HOTDOGS  
PORK OR CHICKEN BBQ WITH FRESH BUNS, COLE  
SLAW AND HOT SAUCES  
FRIED OR GRILLED CHICKEN  
BABY BACK RIBS

### CHOICE OF 2 SIDES:

BAKED BEANS  
COLE SLAW  
POTATO SALAD  
PASTA SALAD  
CHIPS  
GREEN BEANS  
BUTTERED CORN  
CORN ON THE COB WHEELS  
COLLARD GREENS  
SEASONED POTATO WEDGES

SERVED WITH SOFT DINNER ROLLS OR CORN BREAD

**\$16.95 PER PERSON**

PLUS MEAL TAX AND SERVICE CHARGE

## PIG OUT PARTY

### WHOLE SMOKED PIG!

WE BRING THE SMOKER, THE PIG AND ALL THE FIXINS! LET US HELP START THE ULTIMATE PARTY AND BARBEQUE A PIG ALL DAY AT THE LOCATION OF YOUR CHOICE.

### CHOICE OF 3 SIDES:

BAKED BEANS  
COLE SLAW  
POTATO SALAD  
PASTA SALAD  
CHIPS  
GREEN BEANS  
BUTTERED CORN  
CORN ON THE COB WHEELS  
COLLARD GREENS  
SEASONED POTATO WEDGES

SERVED WITH SANDWICH BUNS AND SOFT DINNER ROLLS OR CORN BREAD

**\$1,795 FEEDS 40-50 PEOPLE**  
**LARGER PARTIES ALSO AVAILABLE**

PLUS MEAL TAX AND SERVICE CHARGE

HAMBURGER OR HOT DOG SELECTIONS INCLUDE ALL CONDIMENTS  
(KETCHUP, MUSTARD, MAYO, RELISH, ONIONS, PICKLES, LETTUCE AND TOMATO),

DISPOSABLE PLATES, FLATWARE, SERVING UTENSILS AND NAPKINS AVAILABLE AT AN ADDITIONAL COST  
\$2.25 PER GUEST FOR HIGH QUALITY DISPOSABLE PLATES, CUTLERY AND NAPKINS  
\$1.00 PER GUEST FOR HIGH QUALITY DISPOSABLE CUPS AND NAPKINS



## ADD ONS

---

**ADDITIONAL SIDE**  
\$1.50 PER PERSON

**ADDITIONAL ENTREE**  
\$2.95 PER PERSON

**GARDEN SALAD**  
\$2.50 PER PERSON

**WHOLE PIG**  
FEEDS 40-50 GUESTS  
\$695

**MAC & CHEESE BAR**  
ADDITIONAL \$4.95 PER PERSON  
PLUS SET-UP FEE

**S'MORES BAR**  
ADDITIONAL \$2.95 PER PERSON  
PLUS SET-UP FEE

**ASSORTED COOKIES & BROWNIES**  
\$1.50 PER PERSON

**LAVENDER-MINT FRUIT SALAD**  
\$2 PER PERSON

**SWEET OR UNSWEETENED TEA**  
4.95 PER GALLON

**LEMONADE**  
\$3.95 PER GALLON

