



Enviro Energy Solutions Ltd
Your Gateway to the Sun

EQ Series
CYLINDRICAL SOLAR PV MODULES

...BECAUSE WITH ENVIROENERGY SOLUTIONS THE SUN SHINES FOR EVERYONE...



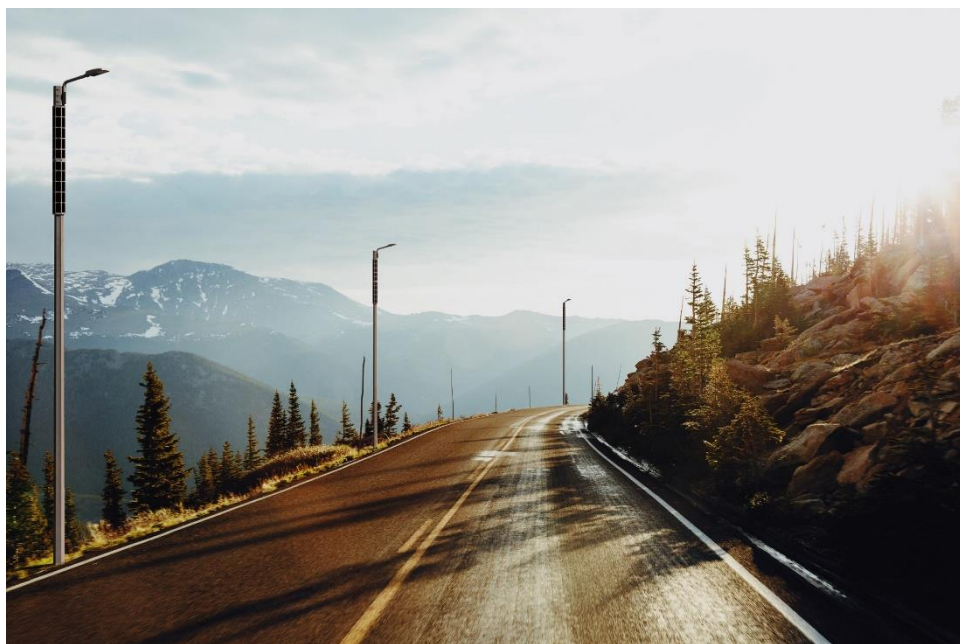
Version 010619

The **Cylindrical Solar PV modules** are a highly advanced product with a revolutionary design made especially for integration on street light poles where there is concern for aesthetics, avoiding bulky PV modules over the street light or on top of the poles.

Cylindrical Solar PV panels are based on a modular conception and can be easily mounted on any pole with a diameter between 70mm and 165mm, without having to dismantle them and offer easy connectivity thanks to their MC4 connectors. Multiple units can also be installed and connected between them to obtain the power output desired.

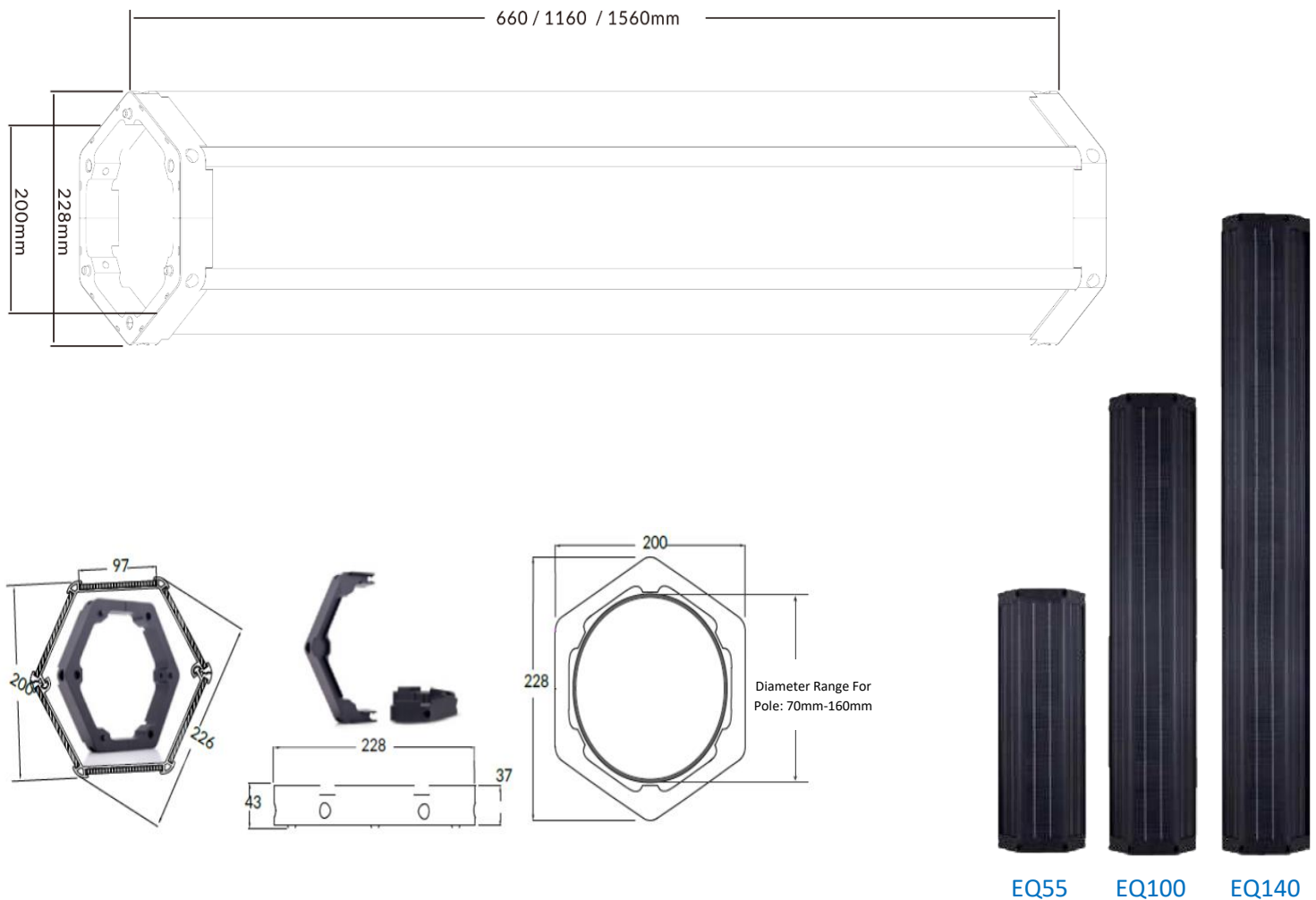
The Cylindrical Solar PV modules are mono crystalline panels with a cell efficiency over 21% and over 20 years lifetime that offer high resistance to wind and snow load that normal flat PV modules.

Cylindrical Solar PV panels can be combined with any **Enviroenergy Solutions Solar Street Lights** Series and used either as the primary source of energy or for additional power source.



Technical Specifications:

Model	EQ55	EQ100	EQ140
Cell Type	Mono Crystalline		
Pmax (W)	55W	100W	140W
Vmp (V)	18V		
Imp (A)	3,06A	5,6A	7,8A
Frame Material	Aluminum Alloy		
Solar Cell Efficiency	>21,2%		
Cable	2,5mm ² with MC4 Connectors		
Operating Temperature (°C)	-40°C to +85°C		
Dimensions (mm)	220 x 228 x 660	220 x 228 x 1160	220 x 228 x 1560
Weight (kg)	16.07	19.07	22.70
Pole Diameter Range (mm)	70 to 160 (150mm Recommended)		
Warranty	5 Years		
Life Time	Up to 25 Years		



Advantages:



Universal Application: The Solar Cylinder can be used on any type of pole and design without having to remove or dismantle it. The detachable design with adjustable spacing brackets makes for easy mounting on every pole, and it can be combined with most solar street lights.



360° All Day Charging: Thanks to 6 slim solar panels that are fixed tightly on a hexagonal frame, the Solar Cylinder ensures that 50% of the solar panels will be facing the sun at any given moment.



Patented Design: The Solar Cylinder module is designed based on advanced concepts with high manufacturing standards and PCT pre-registration has been processed in 180 countries.



Easy Modular Installation: The Solar Cylinder is based on a modular design concept for easy installation and disassembly. Composed of 4 parts it can be easily and quickly mounted or dismantled on any pole.



Strong Resistance to Wind: The Cylindrical design of the Solar Cylinder allows for the wind to flow around it reducing wind resistance surface. Furthermore, each module is directly fixed to the pole by 12 screws for a better hold. Compared to any other solar panel, the Solar Cylinder has a better resistance to wind allowing it to be used safely in locations with stronger winds.



No Snow Coverage: Unlike normal solar panels, the Solar Cylinder is mounted vertically and thanks to its cylindrical shape it is very difficult for snow to accumulate on it, ensuring that it will generate electricity even in climates with heavy snow fall.



Less Dust Accumulation: Thanks to its cylindrical shape and vertical mounting, the Solar Cylinder has less dust accumulation than any normal PV panel. Furthermore, it can be easily cleaned from the ground using a sponge with a long handle, not requiring ladders or lifts thus requiring less maintenance.



Aesthetical Design: Compared to other bulky and aesthetically offensive solar panels that are placed on pole tops and are not an option in areas with aesthetical sensitivity, the Solar Cylinder has an aesthetical superiority. Integrating on the pole and available in many colors to match the design of the pole it blends in to the rest of the environment.

Components:



Master Module: 1pc



Sub Module: 1pc



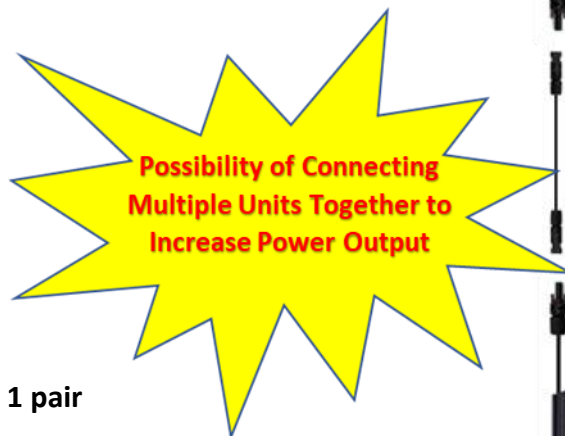
Fixing Holder: 2 pairs



MC4 Adapter: 1 pair



M8 screws: 12pc



18V/36V
Output

Plug-in Connection

Plug-in Connection

MC4 Adapter

Plug-in Connection

+ 18V+

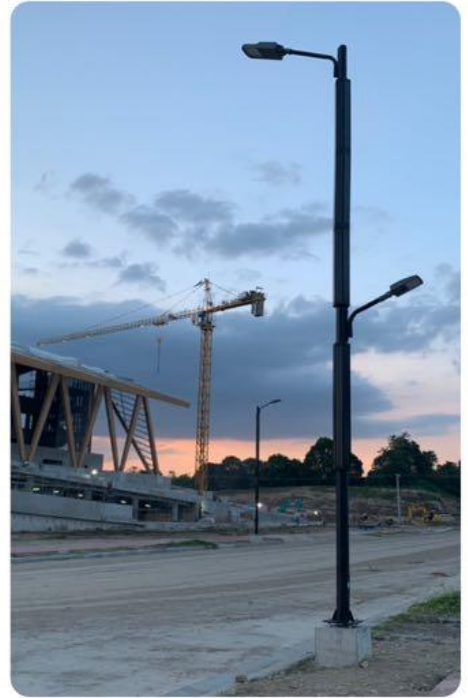
18V-

Plug-in Connection



2019 Southeast Asia Games Installation in the Philippines:

Three Cylindrical Modules of 100w Connected Together to Obtain the 300w to Power the Upper Light of Each Pole and 1 Cylindrical Module of 140w to Power the Lower Light of Each Pole.





Enviro Energy Solutions Ltd

Your Gateway to the Sun

**We do not inherit the earth
from our fathers,
We borrow it
from our children..."**



...BECAUSE WITH ENVIROENERGY SOLUTIONS THE SUN SHINES FOR EVERYONE...



Head Office: Enviroenergy Solutions E.S. Ltd
10, Th. Dervi Str. - 1305 Nicosia - Cyprus



Factory: 1st Km. Inofyta – St. Thomas Rd
32011 Inofyta – Viotia - Greece