

ABOUT THE GREATER CONNELLSVILLE AREA



An Initiative of the Fayette County Cultural Trust

Connellsville is located in Fayette County along the banks of the Youghiogheny River in the beautiful Laurel Highlands of Southwestern Pennsylvania, where residents are able to find that delicate balance between work and play. Connellsville is served by U.S. Route 119 and Pennsylvania Routes 201 and 711, as well as the Joseph A. Hardy Connellsville Airport. Connellsville also has a train station with two daily stops by Amtrak Capitol Limited railroad passenger service that links Washington, D.C., Pittsburgh, PA, Cleveland, OH, and Chicago, IL.

The area's ambiance provides scenic views of the mountains, valleys, and waterways. This unique beauty is highlighted by the four distinct seasons that leave residents awe-inspired and rejuvenated. There is no time and energy spent on a long commute or dealing with the hectic pace of the big city. Instead, that time and energy can be put to good use on a combination of working, playing, enjoying family activities, and just living the good life.

An appreciation of the arts comes naturally in this beautiful setting with small shops such as Appalachian Creativity Center, and performance venues such as The Stage Door Canteen and the Edwin S. Porter Theater and Performing Arts Center in Connellsville, and the State Theatre Center for the Arts in Uniontown. The cultural scene expands even further in surrounding communities and extends out to Pittsburgh, Baltimore, and Washington, D.C. – all within easy driving distance.

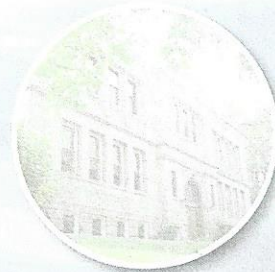
Historic sites abound in and near Connellsville and include national battlefields, museums, homes by Frank Lloyd Wright-Fallingwater being a UNESCO World Heritage Site, the Flight 93 National Memorial, and numerous local sites of interest. National, state, and local parks, white-water rafting, skiing, golfing,

biking and hiking on the Great Allegheny Passage, as well as destination resorts, make relaxing for an hour, day, or week exceptionally easy.

Fayette County has six public school districts including the Connellsville Area School District and several private institutions including Geibel Catholic Junior-Senior High School that offer students future-oriented curricula. Parents and students can choose from an abundance of nearby top quality post-secondary schools including technical schools, Seton Hill University, St. Vincent College, Penn State Fayette – The Eberly Campus, California University of Pennsylvania, West Virginia University, Carnegie Mellon University, The University of Pittsburgh, and Duquesne University just to name a few.

Connellsville's award-winning Highlands Hospital operates as an independent, not-for-profit acute care hospital. It is the second largest employer in Connellsville with over 400 employees and 64 patient beds. It is the only hospital in Fayette County that offers two 24-hour behavioral health programs to adolescents as well as adults, and the only in-patient curriculum for PTSD. Highlands Hospital Regional Center for Autism (HHCA) offers exceptional autism services in collaboration with the Cleveland Clinic Autism Development Solutions program (CCADS).

Connellsville, once the coke and coal capital of the world, is remaking itself as a recreational, cultural, historical, and eco-tourism based town. And with its affordable properties and low business operating costs, it is the perfect place to call home.





ABOUT THE GREATER CONNELLSVILLE AREA

An Initiative of the Fayette County Cultural Trust

Demographics Report (City of Connellsville, Pennsylvania)

Population	7,306
Labor Force.....	3,565
Median Age	39.22
Bachelor's Degree or Higher	21.57%
High School Degree or Higher	89.94%
White Collar Workers	65%
Blue Collar Workers	34%
Household Expenditures (average)	\$49,168
Household Income (average).....	\$60,443
Commute Travel Time (minutes)	19
Airports within 50 miles of Community	3
Distance to Interstate (miles)	10
Distance to Rail (Amtrak).....	In Community
Universities within 50 miles of Community	30
Community Colleges within 50 miles of Community.....	21

Source: www.pasitesearch.com



DEMOGRAPHICS REPORT

20 mile radius around Connellsville, Pennsylvania

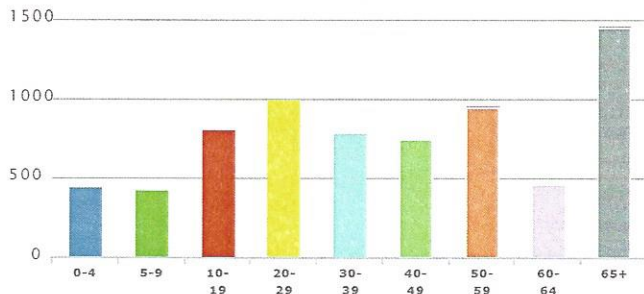
An Initiative of the Fayette County Cultural Trust

Connellsville, Pennsylvania

Demographics Report (20 mile radius around Connellsville, Pennsylvania)

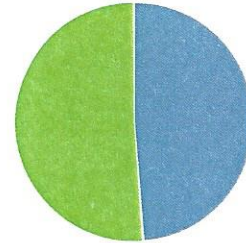
Population (2020)		
	TOTAL	%
	7,306	

Age Distribution (2020)



	TOTAL	%
0-4	475	6.50
5-9	443	6.06
10-19	883	11.47
20-29	1,012	13.85
30-39	872	11.94
40-49	795	12.65
50-59	475	6.50
60-64	1,479	20.24
65+	3,922	n/a

Sex (2020)

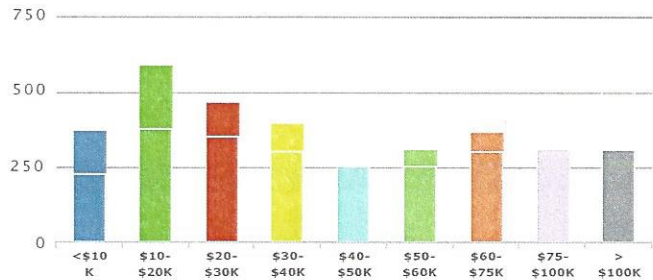


	TOTAL	%
Male	3,473	47.54
Female	3,833	52.46

Total Households (2020)

	TOTAL	%
Households	3,407	n/a
Families	1,907	55.97

Household Income Distribution (2020)





DEMOGRAPHICS REPORT

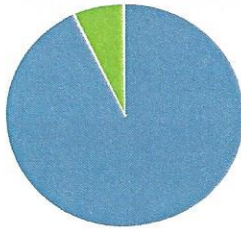
20 mile radius around Connellsville, Pennsylvania

An Initiative of the Fayette County Cultural Trust

Household Income Distribution (2020)

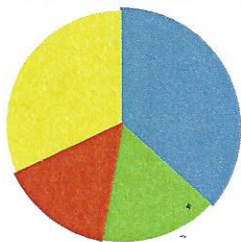
	TOTAL	%
<\$10 K	378	11.09
\$10-\$20K	583	17.11
\$20-\$30K	496	14.56
\$30-\$40K	378	11.09
\$40-\$50K	263	7.72
\$50-\$60K	297	8.72
\$60-\$75K	372	10.92
\$75-\$100K	324	9.51
> \$100K	318	9.33

LaborForce Status (2020)



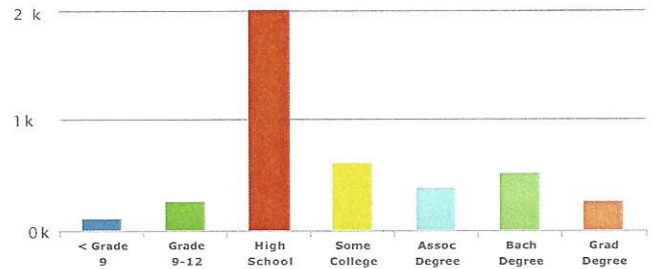
	TOTAL	%
Labor Force	3,565	n/a
Employed	3,319	93.10
Unemployed	246	6.90
In Armed Forces		n/a
Not In Labor Force	2,328	n/a

TotalNumber of Housing (2020)



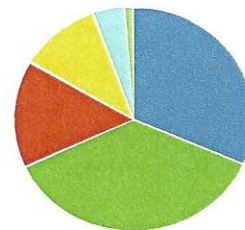
	TOTAL	%
Total Dwellings	3,877	n/a
Owner-Occupied Dwellings	1,765	51.81
Renter-Occupied Dwellings	1,642	48.19
Housing Units Occupied	3,407	87.88

Education Attainment (2020)



	TOTAL	%
< Grade 9	145	2.86
Grade 9-12	364	7.19
High School	2,078	40.95
Some College	817	16.14
Assoc Degree	571	11.24
Bach Degree	782	15.45
Grad Degree	310	6.12

Size of Household (2020)



	TOTAL	%
1 Person	1,335	39.18
2 Person	1,090	31.99
3 Person	439	12.89
4 Person	335	9.83
5 Person	129	3.79
6+ Person	48	1.41



BUSINESS/EDUCATIONAL RESOURCES

for the Connellsville and Fayette County Pennsylvania Areas

An Initiative of the Fayette County Cultural Trust

Seton Hill University's Wukich Center for Entrepreneurial Opportunities

1 Seton Hill Drive
3rd Floor, Administration Building
Greensburg, PA 15602

724-830-4625
www.setonhill.edu

The Center strives to 'demystify entrepreneurship' by helping students understand it as a mindset, and not a one-time event. Since 1997 entrepreneurial thinking has been taught, applied and refined during coursework throughout the undergraduate curricula in classes from art to math to theatre.

Small Business Development Center (SBDC) at Saint Vincent College

300 Fraser Purchase Road
Latrobe, PA 15650

724-537-4572
www.stvincent.edu/sbdc

The mission of the St. Vincent College SBDC is to grow the economy of the Westmoreland and Fayette County area by providing entrepreneurs with education, information and tools necessary to build successful businesses. The Saint Vincent College SBDC provides consulting services and educational programs to entrepreneurs looking to start or grow a small business in Westmoreland and Fayette Counties and has been in existence since 1984.

Penn State Fayette, The Eberly Campus

2201 University Drive
Lemont Furnace, PA 15456

724-430-4100
www.fe.psu.edu

Along with ten bachelor and five associate degree programs, Penn State Fayette offers a wide variety of certificate and non-degree programs and workshops for professional development.

Penn State Fayette, The Eberly Campus is part of The Pennsylvania State University, a multi-campus public research university enjoying a world-wide reputation for excellence in teaching, scholarship, and service.



FINANCIAL INSTITUTIONS

In the Connellsville Area

An Initiative of the Fayette County Cultural Trust

cfsbank

205 South Arch Street
Connellsville, PA 15425

724-628-6001
cfsbank.bank

Scottdale Bank & Trust, a division of Mid Penn Bank

125 South Arch Street
Connellsville, PA 15425

724-628-3200
www.midpennbank.com

Key Bank - ATM

100 Laurel Drive
Connellsville, PA 15425

www.key.com

Somerset Trust Company

(Connellsville Office at the Train Station Complex)

904 West Crawford Avenue
Connellsville, PA 15425

724-626-1725
www.somersettrust.com

Glass Cap Federal Credit Union

241 North Pittsburgh Street
Connellsville, PA 15425

724-628-2424
www.glasscapfcu.com

Somerset Trust Company

(Located inside Connellsville Walmart)

1450 Morrell Ave
Connellsville, PA 15425

724-628-8000
www.somersettrust.com

PNC Bank - ATM

224 West Crawford Avenue
Connellsville, PA 15425

www.pnc.com

Somerset Trust Company

Pechin Market Branch
232 North Pittsburgh Street
Connellsville, PA 15425

724-628-8000
www.somersettrust.com

PNC Bank

Connellsville Shopping Center
135 Memorial Boulevard
Connellsville, PA 15425

724-628-1250
www.pnc.com



BUSINESS RESOURCES

for the Connellsville and Fayette County Pennsylvania Areas

An Initiative of the Fayette County Cultural Trust

Department of Community and Economic Development (DCED)

Commonwealth Keystone Building, 4th Floor 1-866-466-3972
400 North Street www.dced.pa.gov
Harrisburg, PA 17120-0225

The mission of the Department of Community and Economic Development (DCED) is to foster opportunities for businesses to grow and for communities to succeed and thrive in a global economy. The further mission of DCED is to improve the quality of life for Pennsylvania citizens while assuring transparency and accountability in the expenditure of public funds. DCED's website includes a multitude of topics and sub-topics featuring programs, fact sheets, funding information, training, technical assistance, business demographics, and links to additional information.

Small Business Administration

Pittsburgh District Office 412-395-6560
411 Seventh Avenue, Suite 1450 www.sba.gov
Pittsburgh, PA 15219

The U.S. Small Business Administration (SBA) was created in 1953 as an independent agency of the federal government to aid, counsel, assist and protect the interests of small business concerns, to preserve free competitive enterprise and to maintain and strengthen the overall economy of our nation. The SBA helps Americans start, build and grow businesses.

City of Connellsville

City Hall 724-626-2020
110 North Arch Street www.connellsville.us
Connellsville, PA 15425

Allegheny Conference on Community Development

11 Stanwix Street, 17th Floor 412-281-4783
Pittsburgh, PA 15222 www.alleghenyconference.org

The Allegheny Conference on Community Development and its three affiliates – the Greater Pittsburgh Chamber of Commerce, the Pennsylvania Economy League of Greater Pittsburgh and the Pittsburgh Regional Alliance (PRA) – work together to improve the economy and the quality of life in southwestern Pennsylvania.

Founded in 1944, the Allegheny Conference on Community Development is one of the nation's leading economic and community development organizations, combining strong private sector leadership with commitment from public sector partners. The Conference relies upon the Regional Investors Council – leaders of more than 300 companies and organizations – to provide time, talent and resources to advance its agenda.

The Progress Fund

425 West Pittsburgh Street 724-216-9160
Greensburg, PA 15601 www.progressfund.org

The Progress Fund was formed in 1997 recognizing that natural beauty, outdoor recreation and small town charms could be the raw materials that could revitalize communities through tourism. The Progress Fund provides financing and business coaching to help grow businesses and create jobs for the region. The Progress Fund is a Community Development Financial Institution (CDFI) focused on new or expanding tourism businesses in Pennsylvania, West Virginia and Maryland providing loans from \$5,000 to over \$1 million.

Connellsville Redevelopment Authority

Office 724-626-1645
124 West Crawford Avenue www.connellsvilleredevelopment.org
Connellsville, PA 15425



BUSINESS RESOURCES

for the Connellsville and Fayette County Pennsylvania Areas

An Initiative of the Fayette County Cultural Trust

Fayette County Cultural Trust

139 West Crawford Avenue
Connellsville, PA 15425

724-320-6392

www.fayettetrust.org

www.downtownconnellsville.org

The mission of the Fayette County Cultural Trust (FCCT) is to enrich the quality of life by promoting our cultural, artistic, historic and natural assets, and creating partnerships to revitalize communities and further economic development. The FCCT website includes detailed information about the activities and initiatives of the organization, local history, transportation information, local attractions and recreational opportunities including the Great Allegheny Passage bike/hike trail, and links to a host of other relevant information. The "Downtown Connellsville" initiative of the Fayette County Cultural Trust has as its goal to specifically revitalize the downtown area through a community supported effort. The "Downtown Connellsville" website includes detailed information about local businesses and properties, and the activities and initiatives of the organization.

Greater Connellsville Chamber of Commerce

100 South Arch Street
Connellsville, PA 15425

724-628-5500

www.greaterconnellsville.org

The Greater Connellsville Chamber of Commerce provides unity for the local business sector; encourages economic development; provides a networking center for new residents, new and existing businesses, industry, tourists, and referrals; encourages transportation improvements; is a watchdog for local and national legislation for information and issues affecting the Greater Connellsville Area; recognizes outstanding achievement and service for the betterment of our community; plans and promotes special events in downtown Connellsville to encourage shopping

locally; offers varied services for members of the Chamber; cooperates and works closely with other organizations working on common areas of concern; and promotes pride in Connellsville.

Fay-Penn Economic Development Council

1040 Eberly Way, Suite 200
Lemont Furnace, PA 15456

724-437-7913

www.faypenn.org

Fay-Penn's mission is to maintain and increase employment opportunities in Fayette County in an effort to improve the quality of life for all of its residents. Fay-Penn's website includes information about business development & technical assistance, business park development, local economy development, low interest financing, site selection assistance, technical operations assistance, tourism business development, and workforce development. It also includes information about Fayette County quality of life, demographics, development of Marcellus shale, and area school districts.

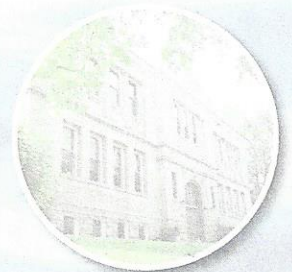
Bridgeway Capital

30 East Main Street
2nd Floor
Uniontown, PA 15401

724-425-0330

www.bridgewaycapital.org

Bridgeway Capital was founded in 1990 and is a certified non-profit lender (CDFI) committed to effectively growing, innovating and stimulating economic development. Bridgeway Capital works to reach small businesses and organizations where they need it most—with available capital. Bridgeway Capital is a market-driven, private sector financial intermediary with a social mission working outside the margins of mainstream finance to provide opportunities and access to capital across western Pennsylvania.



VISITOR RESOURCES

for the Connellsville and Fayette County Pennsylvania Areas



An Initiative of the Fayette County Cultural Trust

GO Laurel Highlands

113 East Main Street
Ligonier, PA 15658

724-238-5661
www.golaurelhighlands.com

GO Laurel Highlands is the official visitors' bureau for Fayette County Pennsylvania, as well as Westmoreland and Somerset counties. The Bureau offers a variety of promotional opportunities and services to its members and oversees the Fayette County Tourism Grant Program. The website of the Bureau provides extensive tourist information about the three county area and its unique historic, natural, and recreational attractions and accommodations.

GAP Conservancy

P.O. Box 501
Latrobe, PA 15650

1-888-282-BIKE
www.gaptrail.org

The GAP Conservancy is a coalition of seven trail organizations in southwestern Pennsylvania and western Maryland that maintain the Great Allegheny Passage (GAP), a 150-mile multiple use rail-trail system between Cumberland, Maryland and Pittsburgh, Pennsylvania. The GAP is now connected to the 184.5 mile C & O Canal Towpath in Cumberland and provides a continuous 335 mile long trail experience on a non-motorized, nearly level trail system between Washington, DC and Pittsburgh, PA.

The Great Allegheny Passage is a segment of the Potomac Heritage National Scenic Trail, one of eight nationally designated scenic trails.

Department of Community and Economic Development (DCED)

Commonwealth Keystone Building, 4th Floor
400 North Street
Harrisburg, PA 17120-0225

1-866-466-3972
www.visitpa.com

(Official Tourism Website of the Commonwealth of Pennsylvania)

This is the official Tourism Website of The Commonwealth of Pennsylvania as overseen by the DCED. It provides information about things to do, places to stay, destinations, deals and events, and trip ideas for Pennsylvania. The Pennsylvania Tourism Office of Travel, Tourism & Film also makes available a number of research reports on the Commonwealth's tourism industry. These reports range from a quick summary of top-level numbers in the Facts & Figures section to in-depth annual reports on the characteristics of leisure and business travelers and their impact on the state's economy to quarterly indicators that provide insight on current trends.

Connellsville Visitors Center

Located at Yough River Park





FAYETTE COUNTY PENNSYLVANIA EMPLOYERS

An Initiative of the Fayette County Cultural Trust

Rank Company

1. STATE GOVERNMENT
2. WVU MEDICINE HOSPITAL
3. NEMACOLIN WOODLANDS INC.
4. WAL-MART ASSOCIATES INC.
5. FAYETTE COUNTY
6. CONNELLSVILLE AREA SCHOOL DISTRICT
7. FAYETTE RESOURCES INC.
- 8 FEDERAL GOVERNMENT
9. ttec SERVICES CORPORATION
10. ALBERT GALLATIN SCHOOL DISTRICT
11. LAUREL HIGHLANDS SCHOOL DISTRICT
12. SENSUS USA INC.
13. UNIONTOWN SCHOOL DISTRICT
14. HIGHLANDS HOSPITAL
15. NiSOURCE CORPORATE SERVICE COMP.
16. HEARTLAND FABRICATION LLC
17. PROFRAC SERVICES LLC
18. JLE INDUSTRIES LLC
19. ARGON ST INC.
20. AMEDISYS HOLDING INC.
21. McDONALD'S (MAAK ALAMO LLC)
22. BROWNSVILLE SCHOOL DISTRICT
23. LADY LUCK CASINO
24. LYNN DAIRY QUEEN INC.
25. PIC OF WESTMORELAND & FAYETTE INC.
26. INTERMEDIATE UNIT 1
27. CHESTNUT RIDGE COUNSELING
28. CONTACTUS LLC
29. LOWE'S HOME CENTERS LLC
30. HRANEC SHEET METAL INC.
31. BERKLEY MEDICAL RESOURCES
32. CROWN CORK & SEAL USA INC.
33. SHEETZ INC.
34. JOHNSON MATTHEY INC.
35. MT. MACRINA MANOR HOME
36. DOLGENCORP LLC
37. CALFRAC WELL SERVICES CORP.
38. OHIOPYLE PRINTS
39. HOME DEPOT USA INC.
40. PA STATE UNIVERSITY
41. UNITED DAIRY INC.
42. LaFAYETTE MANOR INC.
43. TARGET CORPORATION
44. FRAZIER SCHOOL DISTRICT
45. HOME INSTEAD SENIOR CARE
46. CHERRY TREE NURSING CENTER
47. GIANT FOOD STORES LLC
48. ADVANCED ACOUSTIC CONCEPTS
49. UNIONTOWN HEALTHCARE &
REHAB CENTER
50. FAYETTE EMS



CONNELLSVILLE REAL ESTATE SERVICES

An Initiative of the Fayette County Cultural Trust

Berkshire Hathaway

325 Memorial Boulevard
Connellsville, PA 15425

724-797-9090
www.thepreferredrealty.com

Coldwell Banker Laurel Ridge Realty

1307 Morrell Avenue
Connellsville, PA 15425

724-628-7200
www.coldwellbanker.com

Michael D. Kelley, Real Estate Appraiser

1305 Morrell Avenue
Connellsville, PA 15425

724-628-7210
www.kelley-appraisals.com