

Instructor Certification



Learning Centers

The Family Solution Finder

Educate, Organize, Network

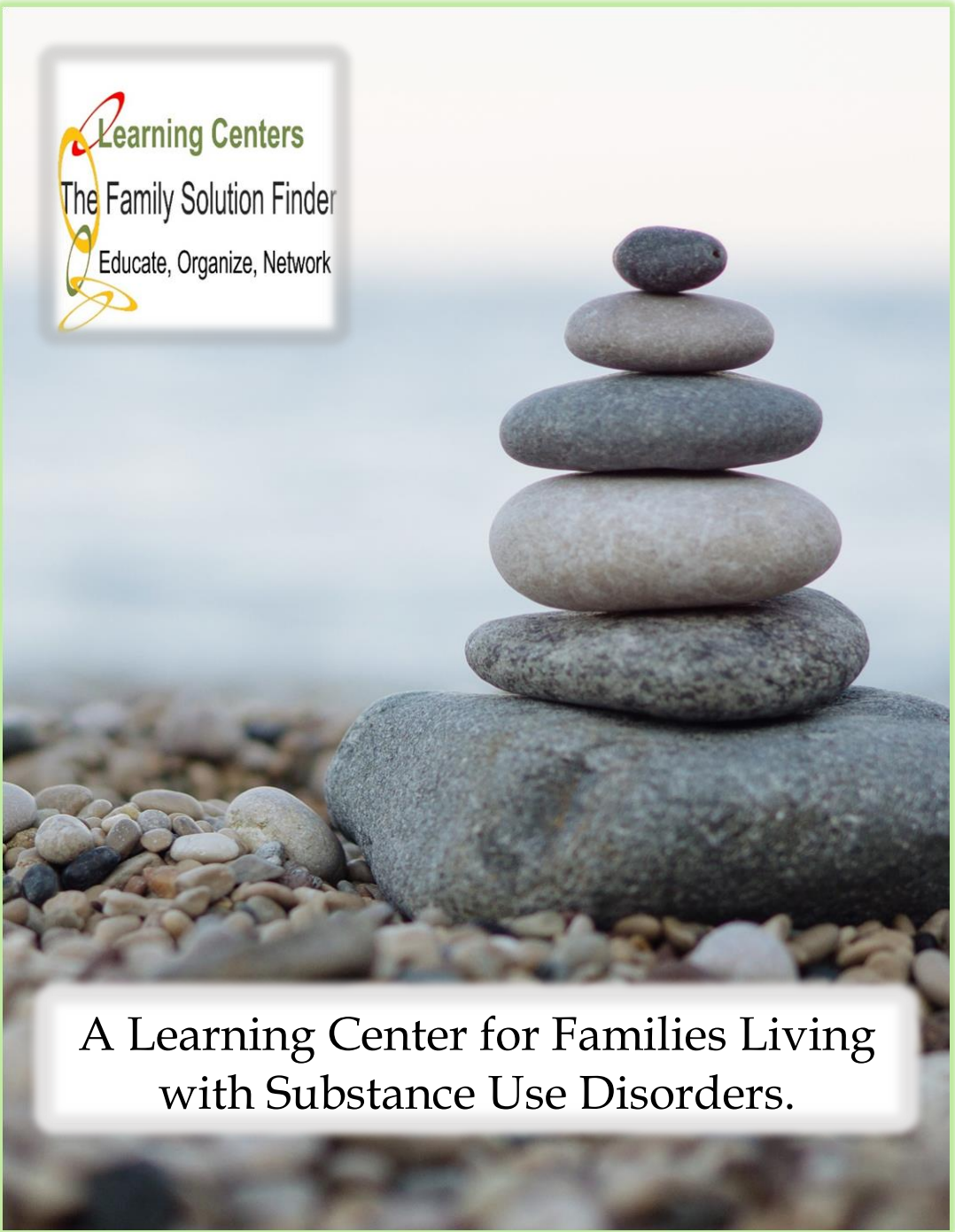
A Guidebook

Because we know,
“An empowered family is unstoppable”.

Roy P. Poillon

© Copyright September 4, 2020
Witt's End Consulting, LLC All Rights Reserved
familiesimpactedbyopioids@gmail.com

ISBN: 978-1-7353750-8-3



A Learning Center for Families Living
with Substance Use Disorders.

Table of Contents

Introduction	3
About Us	6
Mission & Values Statements	7
The Stakeholders in our Communities	8
What is a Family Solution Finder Learning Series	9
How to set-up a Family Solution Finder Learning Centers.....	12
Who can start a Family Solution Finder Learning Centers	14
Operating a Family Solution Finder Learning Centers	15
Create a Learning System in your community	17
Two Channels for Educating	18
Train the Instructor	22
Educate the Family Members	23
Educate the Community & Providers	25
Educate & Support the Faith Organizations	28
How to Register your Family Solution Finder Learning Centers..	29
How to Order Books	30
Create a Fund Raiser	31
Conclusion	32

Introduction

Throughout each county across the nation there are hundreds of families that have been impacted by the drug epidemic. Few have any idea about what is ahead for their journey in living with this disease. The communities that support these families typically do not understand core issues the family will likely face in their journey. And our faith organizations, who want to help and provide ministry, do not have the materials to support this type of family need, to include the challenges their family members face. What's most needed is education, through a structure designed to support these three areas of our community; The family members, the community service providers and the faith organizations. The “*Family Solution Finder Learning Centers*” is that structure.

The Family Members:

Although family is defined in different ways, the family members need to learn about what the disease is, how it progresses, what issues will require their involvement and how their lives are likely to change. They also need to understand who in the community is there to assist them and what to expect from these services.

The Community:

For most local communities there is a lack of understanding about all the issues family members face in their journey. This may limit their ability to provide services that directly match the family member's needs, and how to connect each service for stronger continuity of care. This lack of understanding also creates a stigma about the family and disease. We could do better, if we understood more about who they are and what they experience.

Places of Faith Practice:

The same is true for our places of faith practices. These organizations want to participate and provide spiritual care, however, they are lacking in the tools and understanding about what it is be a family member living with substance use disorders. The faith organizations understand suffering and how to nurture family members, they just do not understand the characteristics of this type of family journey. For them to get involved we need to give the faith organizations the tools and content of what they can offer in a faith ministry for their families.

What can be done?

As a caring society it would be helpful if we stepped back, reviewed what is working locally, what is not working, what is missing and what is available from within the community. Then we need to educate the family members, their local community, and the places of faith practice.

To do this, we will need:

1. A Structure, to deliver change.
2. A Process to support change.
3. A plan for Implementing the change.
4. A multi-level education strategy, to impact the families and their local community.

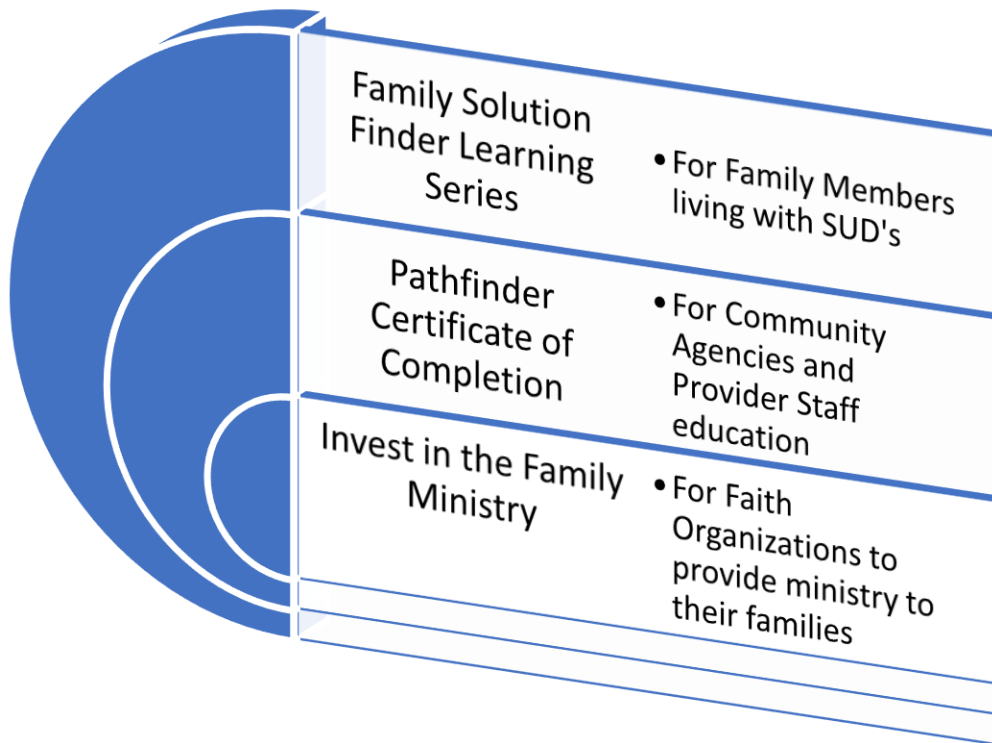
There is no quick fix, the education structure needs to be embedded within the community, implemented by the community, and sustained as resources for families from within the community. The Family Solution Finder Learning Center is provided by the community.

Purpose of Family Solution Finder Learning Center

“*The Family Solution Finder Learning Centers*” has been created and is now available to every community across the nation. The Family Solution Finder Learning Centers provides “Structure, Process, and Implementation”. It is designed to locally meet the needs of family members, community services providers and faith organizations.

1. The family members living with substance use disorder. They will receive “*The Family Solution Finder Learning Series*”, 32 key issue learning seminars of 1.5 hours each, with study guide, workbooks and on-demand eLearning programs.
2. The local community agencies and provider staff to better understand these family members. They will receive “*The Pathfinder Certificate of Completion Seminar*” 12 Key Core Competency Issues.
3. The local places of faith practice, to better support their family members. They will receive “*The Invest in the Family Ministry*” *User Manual and Volunteer Guide*. Include a turnkey model with three programs that ensure success.

By making the family a center of focus, we will empower the family with knowledge and those who surround them, which is everyone.



About Us

Families Impacted by Opioids is a nonprofit organization and was founded by Mr. Roy P. Poillon, July 2018 for the purpose of educating family members living with substance use disorders. From his past career in developing healthcare delivery business models for alternate site healthcare services and disease management, he is now applying this knowledge to the Substance Use Disorders Industry. There is a gap in several areas which contributes to relapse, poor outcomes and fracturing of our families and their communities. This program is designed to be one element in filling the gap, nationwide.

A critical area of success has to do with how well the person in recovery is supported by their family members, the community agencies to include the local provider staff, and their places of faith practice. Given, the family members are an important link to sustained recovery, they need access to education about this journey.

What impacts the family, will impact the community, the two are inseparable.

Historically, families do not come into the community seeking education on this disease. It has a stigma. They typically come out “in response” to a situation because they need to find a solution for a particular issue. There really are no places where an all-inclusive learning series is provided covering the families entire journey. For this reason, they do not have a thorough understanding of what might come next and therefore cannot properly prepare the next phase.

Include the Stakeholders:

At the *Family Solution Finder Learning Centers*, we do know what is likely to happen next, we do educate the family member on these key issues, and they will have a plan of action for each issue. They will be empowered with knowledge. And we will do the same for the local community agencies, the local provider staff, and local places of faith practices. This way, all the stakeholders are included. This can only be accomplished through a local structure with a process set-up locally to educate and share. It must come from within the community for it to be accessible and sustainable.



Helping the family layer their learning one stone at a time

Mission Statement

We seek to educate the family members living with substance use disorders and those who support them in their local community with a Family Solution Finder Learning Centers model. By educating the family, the local community agencies, the provider staff of services and local places faith practices we will become all-inclusive in a unified response to the drug epidemic. This disease impacts all of us, therefore all of us need to support the family members in their journey.

Vision Statement

To provide education resources at the local level for our Ohio communities; Families Impacted by Opioids will visit all 88 counties in the State of Ohio, making introductions to key stakeholders. The selected organizations and individuals will register and be provided the materials needed to start a Family Solution Finder Learning Centers program at various Levels I-IV. We will have registered 53 local learning centers across the State of Ohio in five years, with a range of 60% being Level II. In each enclave of the four enclaves designated for Ohio in two years there will be not less than 10 Family Solution Finder Learning Centers active with a mix of Levels I and II. Within the first 1.5 years there will be not less than 5 learning centers in each of the 4 enclaves for Ohio. At the start of year 3 we will expand our program to a nationwide exposure starting in States with a high prevalence and occurrence of this disease. Our goal is to have a Family Solution Finder Learning Centers presence in every state across the country by 2028.

The Stakeholders in our Communities

Include, *(but not limited to)*

1. Treatment Center Facilities
2. Mental Health Center Facilities
3. Sports Coaches
4. Emergency Room Social Workers
5. School Guide Counselors
6. Pastors, Leaders of Faith Organizations
7. Police and First responders
8. Legal Court System
9. Foster Care Services
10. Jobs and Family Services
11. Employers
12. Community Support Agencies
13. Healthcare Providers

These stakeholders will benefit in providing their services and programs when they more completely understand the journey of family members living with substance use disorders. These are the stakeholders we will visit in each county.

The Facilitator

A “Facilitator” is required to start the Family Solution Finder Learning Centers (FSFLC) . Regardless of the Level I-IV chosen to start a FSFLC. A Facilitator needs to be identified and trained for the center to be successful. Think of this person as the founder and it does not necessarily need to be the same person who will instruct or present. This person’s role is to create the needed parts to running the FSFLC on a week in and week out bases. Once a FSFLC is up and running the time required to sustain the center will become less, because the process is designed to mostly run itself with participation and oversight of an instructor if you are operating a Level II-IV FSFLC.

WORKSHEET

Our Community Stakeholders

To find community stakeholders, consider call on these local leaders:

1. Treatment Center Facilities
2. Mental Health Center Facilities
3. Sports Coaches
4. Emergency Room Social Workers
5. School Guide Counselors
6. Pastors, Leaders of Faith Organizations
7. Police and First responders
8. Legal Court System
9. Foster Care Services
10. Jobs and Family Services
11. Employers
12. Community Support Agencies
13. Healthcare Providers

Create a Contact Profile Card to gather their information.

During the call:

Call on them to introduce your Family Solution Finder Learning Centers. Use the Pathfinder Certificate of Completion Seminar book as a discussion point of the type of education you are providing to family members. Leave a copy of the Pathfinder Certificate of Completion Seminar with them and inside place your flyer and how to order more of these books to give to their staff and client family members. If you are a Level III FSFLC, ask to provide an inservice using one of the 12 Core Competency Issues as the topic.

What is a “Family Solution Finder Learning Series”

The Family Solution Finder Learning Series (FSFLS), is a learning resource for family members to receive education about the “32 key issues” they will likely face living with substance use disorders. Each seminar is 1.5hrs.

They will learn the 5 tools used to breakdown and address each issue:

1. Family Transformational Response (F.T.R.) Model
2. Family Value Based Decision-Making Model
3. The SUD Journey, It’s Time to get Organized
4. The SUD Journey, It’s Time to get Networked
5. The Family Needs to Meet

They will learn the 32 key issues which cover the entire family members journey:

1. The family is a system
2. Different roles of the family members
3. Childhood trauma in the family system
4. Different types of family therapy
5. The family support structure in addiction
6. Getting a diagnosis
7. Substance use disorder is a brain disease
8. The disease progresses in stages
9. Relapse is a part of this brain disease journey
10. Enable vs. Consequence
11. The Addiction Behavior, Setting boundaries
12. Family Intervention, Five stages of change
13. Police Intervention
14. Emergency Medical Intervention
15. Legal System, Intervention
16. Treatment Center Intervention
17. Family Community Mapping
18. The Relapse
19. Successful Lifelong Recovery
20. Bereavement
21. Spiritual Faith practices
22. Elements of a Family Plan of Action
23. Roles and Responsibilities in the Family plan of action
24. Getting networked in advance
25. Suicide Prevention
26. Financial Management in the substance Use Disorder Journey
27. Foster Care Services in substance Use Disorder Journey
28. NARCAN
29. Peer to Peer Services
30. Medical Assisted Treatment (M.A.T.)
31. Family Solution Finder Learning
32. Harm Reduction

The Family:

The *Family Solution Finder Learning Series Books*. This series of presentation seminars will encompass the 32 key issues, tools for developing responses to these issues, organizing a plan of action for each issue, and finding in advance the providers from their local community who have services to assist them. From this learning series they will become empowered families.

The Community:

The *Pathfinder Certificate of Completion Seminar Book*, provides 12 core competency issues the *community agencies and provider staff* need to understand about the family members journey.

The Faith Organizations:

The *Invest in the Family Ministry User Manual and Volunteer Guide Book*, supports local places of faith practices to provide support for their family members. This is a turnkey ministry model available from their local Family Solution Finder Learning Centers to assist them in setting up a sustainable Faith & Education ministry.

The Location:

By setting up a local Family Solution Finder Learning Centers across each State we can positively impact this disease where it matters most, at the level of the family and their local community. A family is a system and seeks balance, this gives them back their balance.

Unity Kills Stigma:

By including the local community agencies, provider staff, and the places of faith practice, a unified blanket of education will meet the family where ever they go. A Pathfinder Certificate of Completion is published for all the stakeholders in the community; sports coaches, school guidance counselors, police first responders, mental health centers, emergency room social workers, community agencies, treatment centers, pastors. This is where the family goes for support, and now these are the places they will find the Pathfinder Certificate of Completion and Family Solution Finder Learning Series. It will be everywhere they turn, and each location will ask them if they have taken the time to learn about their journey.

In the Family Solution Finder Learning Centers, the “Family Members” become the center our community focus, with those who support them also included in the education process.

Family Member

Community Agencies

Healthcare Providers

Faith Groups

The Family System

1. **Family Solution Finder Learning Series Books:** *32 key issues seminars, study guide, workbooks, and e-Learning online, for family member education.*
2. **Pathfinder Certificate of Completion Seminar Book:** *12 core competency issues seminars, for community agencies and provider staff to know about the family members journey.*
3. **Invest in the Family Ministry User Manual and Volunteer Guide:** *A turnkey model with Ministry User Manual and Volunteer Guidebook, for faith groups to support their families with education and ministry.*

How to set-up a Family Solution Finder Learning Centers

Which Level I-IV is Right for You:

We suggest an assessment of your interest and motive be your first step. Our question to you is “Why would you want to provide a Family Solution Finder Learning Centers”. Please answer this before we answer how to set one up. From your answer comes a better idea as to what Level I-IV of learning center best matches your interest. There are four levels of The Family Learning Centers to consider, each works with a different segment of your local community.

Four Levels of The Family Solution Finder Learning Centers

Level One: In this level you will provide the *Pathfinder Certificate of Completion Seminar* book to your past, present and future clients. Also, these books can be used in distributing to your referral sources for their staff education. If you are an organization, this can be used in an employee “Lunch and Learn” session.

The *Pathfinder Certificate of Completion Seminar* can be given to the family directly, as an introduction to the larger 32 seminars found in The Family Solution Finder Study Guidebook and Workbook.

eLearning is offered by your organization when distributing this book.

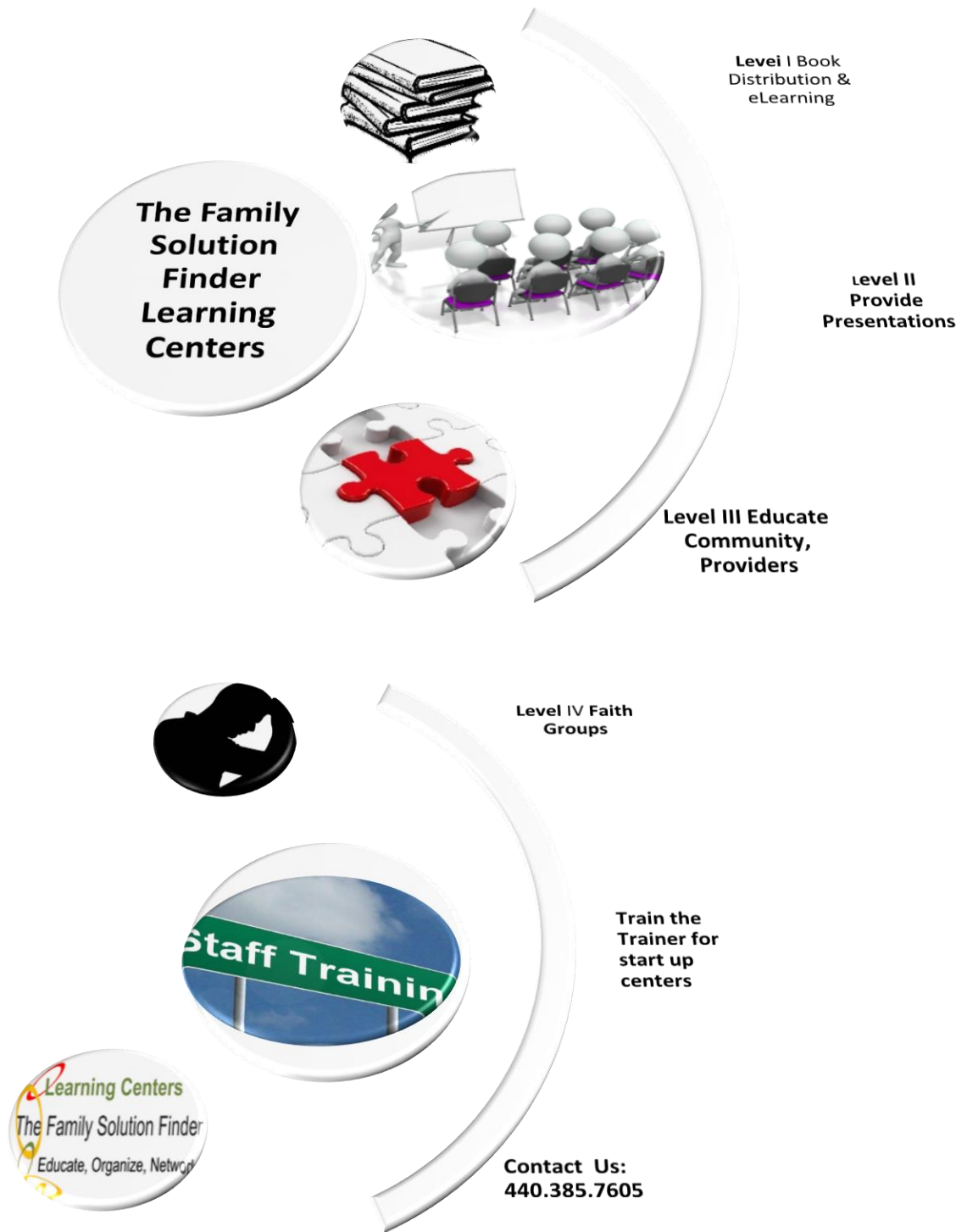
Level Two: In this level you will provide learning seminars at your location. The Family Solution Finder Learning Series Study Guide and Workbook will be provided and used in these sessions. This level will also include Level One.

Level Three: In this level you will provide learning seminars to other organizations using the *Pathfinder Certificate of Completion Seminars* at their location. This level will also include Levels One & Two.

Level Four: In this level you will meet with churches and places of Faith Practices within your community to introduce the “Invest in the Family Ministry” using the Set-Up Guide and Volunteer Manual Book. This level will also include Levels One, Two & Three. You can choose the type of support best matches their needs.

Please choose which program best matches your level of interest and contact us. We will walk you through the simple steps towards registering. You can be up and running within a week.

Local Community is part of the Family Members Solution



Who can Start a Family Solution Finder Learning Center

Anyone can start up a Family Solution Finder Learning Centers. That is the great news about this community focused model. The Family Solution Finder Learning Center is designed so that it does not require a presenter to have prior knowledge of the topic, and the 32 seminars are self-administrated with power point slide each with voice over narrator. Also, all the handouts and practical exercise are included. So, whatever topic is determined to be most useful, this becomes the topic to present.

Examples of Who Can Set-up a Family Solution Finder Learning Center:

- **Treatment Centers:** can provide these seminars as a service to the family members of those they are treating, past, present and future. This can be a strong tool for community awareness of their treatment facility services and other programs, too. Level III & IV
- **Mental Health Centers:** as **Individual Practice or in a Center**, can provide selected seminars, at a set location and schedule. Level III & IV
- **Libraries:** Lending the books. Level I
- **Support Groups:** small or large family members support group can use this in their meetings. Level II
- **Police and First Responder Teams:** can present these programs and distribute the books with eLearning program as part of their “Community Engagement” drug awareness programs. Level I
- **Churches and places of Faith Practices:** can use this as a part of their ministry meeting plan. “Invest in the Family Ministry User Manual. Level III & IV
- **Coaches for sport teams:** can distribute the Pathfinder Certificate of Completion Seminar book to families. Level I
- **Social Workers:** 1. At schools Guidance Counselor offices, 2. In Emergency Rooms, 3. At Government Agencies. Level III
- **Drug Courts:** can require the family members to complete the Pathfinder Certificate of Completion Seminar book. Level I



III % IV

can

WORKSHEET

Who Can Start a F.S.F.L.C.

In considering who can start a Family Solution Finder Learning Centers, (FSFLC) we need to consider why they would want to offer this level of program? What's their motive? In determining "Why?" we will find the answer to how we can best support them.

As a FSFLC Level II your group will focus on presenting to family members.

As a FSFLC Level II-IV, your group will also be interested in having others in the community assist in their providing education to family members, using the programs your center is providing. Your group becomes the local representation of the initiative to educate family members.

CONTACT INFORMATION

Name:

Title:

Address:

Phone:

Email:

CONTACT LOG

DATE OF LAST CONTACT:

TOPICS DISCUSSED:

NEXT STEPS:

Note: To receive the wholesale price discount the Family Solution Finder Learning Centers must be registered with Families Impacted by Opioids. See website for forms and steps to register.

Operating a Family Solution Finder Learning Centers

Required Registration:

We are asking you to register on www.familiesimpactedbyopioids.com in order that we can provide updates to content, support to your organizations learning center and allow others to find you in their community. These materials can be copied with permission for the purposes of marketing and training. All these materials are available as free downloads on our website.

It may be best to start one level down from where you want to be, in order to get comfortable with the material, its set up and functioning of these seminars. We recommend most organizations start at Level One, *Book Distribution, and e-learning*. Then move into Level Two. Take time to invite the public as a community relations initiative. There is a required donation fee to register a Family Solution Finder Learning Centers.

Use the books:

Our books help to drive the learning experience, but your presentation and presence is what will matter even more to these family members. The operation for The Family Solution Finder Learning Centers is the same as any other scheduled list of seminars you may have provided in the past. There is nothing specific or special steps needed for the center itself, other than making people aware of your sessions.

Room set-up:

This can be in whatever design you choose. We recommend circle tables because in helps to facilitate conversation and sharing between family members.

Audio/Visual:

Be sure to have access and internet WIFI for the extended learning videos included in these seminars. Laptop, speakers, and TV or screen are needed.

SET-UP WORKSHEET

Room Reserved _____

Audio/Visual Equipment with Internet Access _____

New Attendee Welcome Pack _____

Attendee Sign-in Sheet _____

Handouts _____

Refreshments _____

Email to Attendee this meetings Agenda _____

Instructor or Meeting Presenter is confirmed _____

Next Meetings Agenda is ready as “draft copy” _____

IF THIS IS AN “INVEST IN THE FAMILY” Session (same as above)

Pathfinder Volunteers are prepared to follow up with assign family members

Pathfinder Volunteers have SP~ARK’s Program Materials prepared in advance

Ministry Administrator has updated list of attendee’s

Ministry Trainer has Agenda for next six months

Pathfinder Volunteer has an updated copy of M.O.R.E. Referral Network

The Meeting Agenda:

It is helpful to have the next meeting's agenda as a handout in each meeting. Also, keep a calendar updated as to time, topic, location and point of contact on a page in your organization's website.

a. Which issue to present:

Some choose to start with Seminar #1 and proceed as it is numerically set up. Others ask their attendees, which topics they want to view. In either case, it is helpful for the attendee and the presenter if a schedule is set up going out six months.

b. Duration:

- It is more effective to have one single topic (issue) in a meeting. Try not to mix one subject with another in the same meeting. For example, don't mix seminar # 1 The Family is a System with Seminar # 2 The Different Roles Family Members Play.
- There should be 40 minutes for slides and video's, 20 minutes for practical exercises, 20 minutes for group discussion. Duration: 1.5hrs/seminar.
- The video sessions are more valuable when there is a discussion to follow, so others can glean important points from the person next to them. **And again, circle tables work best.**

SEMINAR WORKSHEET

The Meeting Agenda

- | | |
|--|--------------|
| 1. Introductions to today's topic | 5min |
| 2. Power Point Presentation | 30min |
| 3. Practical Exercises | 20min |
| 4. Group Discussion | 20min |
| 5. Conclusion | 5min |

Invest in the Family Ministry Meeting Agenda

- | | |
|---|--------------|
| 1. Introductions to today's topic | 5min |
| 2. Power Point Presentation | 30min |
| 3. Practical Exercises | 20min |
| 4. Group Discussion | 15min |
| 5. SP~ARK's Program Progress Review | 10min |
| 6. M.O.R.E. Program Follow Up Review | 10min |
| 7. Conclusion | |

Create a Learning System in the Community

The family solution finder learning series can be presented as a “Monthly Learning System” where an entire month is dedicated to a single issue (topic).

Issue of the Month: Select an issue as the “*Topic of the Month*”. Where, the family solution finder learning series seminar (issue) is presented:

In the First week, use the Family Solution Finder Learning Seminar Study Guide, Workbook and Power Point Presentation, for that issue. (*PPT is downloaded from our website*)

In the Second week, have a speaker from the community come in to speak on this topic.

In the Third week, have a person provide their personal testimony on this same topic from that person’s experience and perspective in dealing with this issue. Use the “The Substance Use Disorder, It’s Time to Get Organized workbook.

In a Fourth week, a general discussion covering how to use the lessons learned this month, using the It’s Time to Get Organized and It’s Time to Get Networked workbook.

In this monthly learning system, the family members are provided an in-depth education experience unlike any they will receive elsewhere.

Through this system, a total number of meetings: 32 seminars x 4 sessions per topic each month equals 128 sessions. It will cover 2.6 years of meeting content.

Because this is a lifelong journey, it will take time to cover all the topics. Then again, where else can these families go to learn in this deep of a review? If the family has an urgent need to review a specific issue seminar, they can do so “On-Demand Seminars” online through our website in our self-directed eLearning model.

AGENDA WORKSHEET

Family Solution Finder Learning System

Topic of the Month: _____

Week One: Family Solution Finder Learning Series, Study Guide, Workbook and Power Point Presentation.

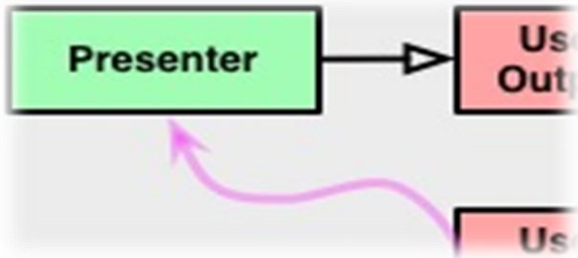
Week Two: A professional on this topic from the local community.

Week Three: A personal testimony from an experience dealing with this topic.

Week Four: As a group review how to create the Family Plan of Action for this issue.

The Two Channels for Educating our Family Members

Instructor:



1. A trained presenter is an invaluable asset to your organization. This person has the forum to educate, direct next steps, influence the quality of family decision making, inform, relate, and demonstrate empathy all as it is in line with your organization goals and objectives.

Family Solution Finder Learning Centers, Levels II-IV.

Benefits:

- Presenting the Family Solution Finder Learning Services will create a awareness in those who make referrals and around the community. It will be an attribute to your brand.
- Training your staff will increase the acceptance of family members by your employees, because they received this training and have a better appreciation of what family members are experiencing.
- The community will recognize your organization and being valued added, past just the core services you provide.
- This may have future grant approval contributions for preventative, faith practices support or community education grants.

THE PRESENTATION WORKSHEET

Consider yourself: (what motivates you about this topic/issue)?

Consider your audience: (what will likely motivate them about this presentation)?

Consider the outcome: (for this presentation, what are the desired next steps for the attendee)?

WHAT ARE THE TOP THREE WALK AWAY POINTS FOR THE ATTENDEE

1.

2.

3.

On-Demand Seminars

2. The entire “*Family Solution Finder Learning Series*” is on our website as a free download for each seminar. A community seminar presenter will find all the materials needed to provide their learning session. A family can use these seminars in the comfort and privacy of their home.



The family members can choose a topic (issue) to learn by selecting from one of the 32 key issues. These learning sessions are delivered through the following download formats:

- Study Guide, *learn the topic*
- Workbook, *apply what’s learned to their life situations*
- Power Point Presentation with slide voice narrator, *some learn better through video.*

The presentations have embedded video links for extend learning.

- Practical Exercises, *apply the lesson for planning how to respond*
- Solution Finder Exercise Worksheet, *create a solution given their real world facts*
- Value Based Family Decision Making Model Worksheet, *make a family unified decision on how to move forward*
- Family Plan of Action Worksheet, *create responsibilities within the family on who does what by when*
- Local Community Networking Worksheet take the family plan of action to a local licensed professional for guidance and support.
- Clinical Paper for each key issue, *get a second opinion by knowing the facts*

THE ON-DEMAND SEMINARS PRGRAM WORKSHEET

How will this On-Demand Seminars be used by the attendee's?

Who in the Provider Staff or Community Organizations will Use this On-Demand Seminars for their Client's?

Why would Families connect with us and our program from using the ON-DEMAND Seminars?

Multi-level learning channels for family member learning

We have included the different mediums for learning into the structure of a Family Solution Finder Learning Centers so that the *Process for learning* from the Family Solution Finder Learning Series has a stronger foundation as a real life application.

These mediums include:

1. Written Text learning.
2. Video learning.
3. Presentation learning.

Reverse demonstration (where attendee demonstrate back their level of understanding)

The Sources we used are worth looking through

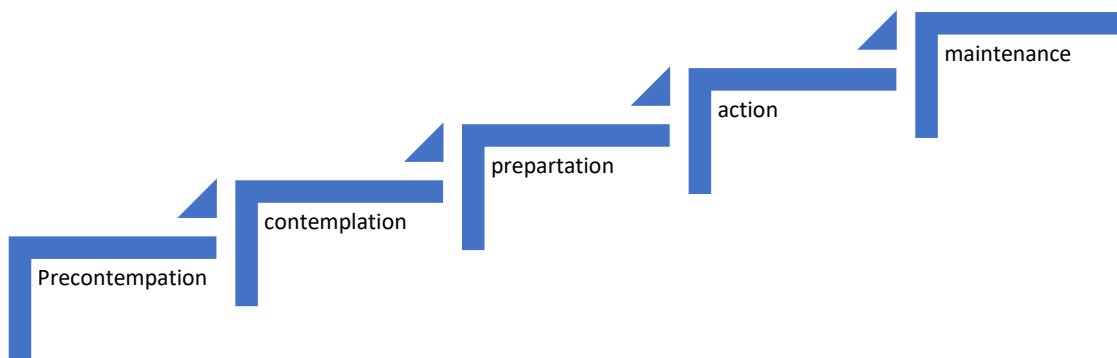
There are sites on the internet which provide strong content to support learning and instruction. Here are a few that we used and are worth looking through:

1. www.samhsa.org
2. www.adaa.org
3. www.drugfree.org
4. www.psychologytoday.org
5. www.Relink.org
6. www.drughelp.cares
7. www.nichq.org
8. www.apa.org
9. www.drugabuse.gov
10. www.nacoa.org

How we structured family member learning:

To ensure the family member are presented this learning series in a constructive structure, the process for learning follows the behavioral therapy methodology of the *theories of change*. Because, what we are asking of the family members to do is change their way of thinking to include this new level of learning.

1. **Precontemplation**, the “FSF Learning Seminar Study Guidebook” introduces the issue (Subject). Each Subject (issue) has three learning objectives. This creates problem awareness which is a critical part of motivational interviewing steps to move forward. At this point the attendees is now aware of the topic (issue).
2. **Contemplation**, the “FSF Learning Seminars Workbook” introduces the subject learning objectives as a Practical Exercise with video enhanced learning about the subject. The structure of workbook, power point presentation and individual reverse demonstration in the practical exercise is our process. Now the attendee has applied what they have learned in the study guide, to their real-life situation.
3. **Preparation**, the “It’s Time to Get Organized workbook” introduces the family skill tools for creating a solution using the Family Transformation Response (F.T.R.) model. This worksheet breaks down an issue into “finding the solution”. And the Value Based Family Decision Making Model for the family to use in determining how they will respond to the issue.
4. **Action**, the “It’s Time to Get Organized workbook” has a final step, creating a family plan of action around all the steps taken above. This is a plan with To-Do list, family member assignments for taking the next steps in addressing the issue.
5. **Maintenance**, the “It’s Time to Get Networked workbook” has a worksheet for each of the 32 issues to build a local provider network. This network workbook becomes their Family Provider Network Directory. Here is where they will take all the above work, meet with a professional service provider, and determine how they will assist the family in meeting their needs. It is the *Five Stages of Change Theory* applied to the journey of learning for the family members living with substance use disorders.



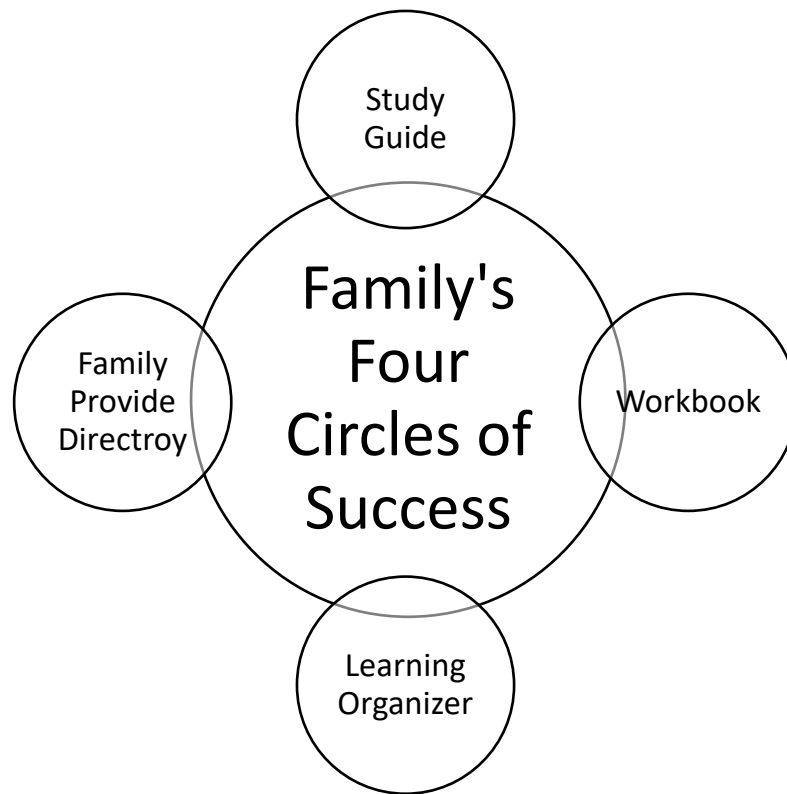
WORKSHEET

Stages of Change

What Level of Change is the Seminar Attendee for this issue?

1. The Family Solution Finder Learning Seminar, Study Guidebook will take them through
 - a. pre-Contemplation, problem awareness.
2. The Family Solution Finder Learning Center, Workbook Practical Exercises will take them through
 - a. Contemplation
3. Video's support the foundation of pre-contemplation and contemplation.
4. The Substance use Disorders, It's Time to Get Organized Workbook will take them through
 - a. Preparation
5. Family Transformation Response (F.T.R.) will take them through
 - a. preparation
6. Family Value Based Decision Making Model will take them through
 - a. preparation
7. Family Plan of Action
 - a. action
8. The Substance Use Disorders, It's Time to Get Networked Workbook
 - a. action
9. M.O.R.E.S. Card Completed
 - a. maintenance

Family's Four Circles of Success



1. **Study Guide**, (The Family Solution Finder Learning Seminars, Study Guide Book), presents the issue, three learning objectives are identified
2. **Workbook**, (The Family Solution Finder Learning Seminars, Workbook), take these 3 objectives and allows family member to apply them to their real life situations.
3. **Learning Organizer**, (The Substance Use Disorder Journey, It's time to Get Organized) moves the learning forward: 1. A solution for the issue is created by the family, 2. A decision on how to move forward is designed by the family members, A Family Plan of Action is agreed too, by the family members.
4. **Family Provider Directory**, (The Substance Use Disorder Journey, It's time to Get Networked) takes the family members learning, work and plan of action and meet with a licensed professional for guidance and assistance.

Educate the Family Members

Using the *Family Solution Finder Learning Series* (32 Seminars)
(family members study curriculum)

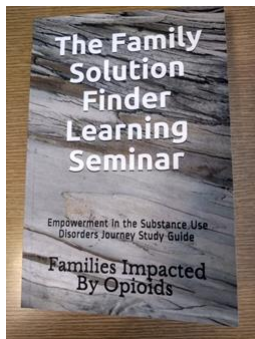
The Family Solution Finder Learning Series consist of four books:

1. The Family Solution Finder Study Guide
2. The Family Solution Finder Workbook
3. The Substance Use Disorders, It's Time to Get Organized workbook
4. The Substance Use Disorders, It's Time to Get Networked workbook

Bonus: On-Demand eLearning for all 32 Key Issue Seminars (online through our website).

The Family Solution Finder Study Guidebook:

This book introduces the issue as a topic of learning. Each of the 32 key issues has learning objectives, there are three objectives to each issue.

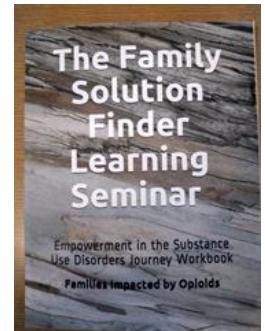


Most families will likely not experience all 32 key issue and the sequence of each issue presenting to the family in their journey will differ from family to family.

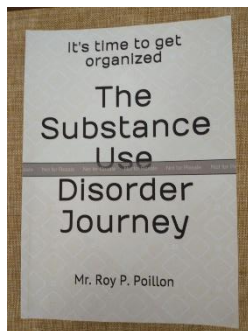
For this reason, these issues can be studied in sequence starting with the first, or a “On Demand” where a family goes to a specific topic because that is a subject requiring their immediate response. To assure access, all the section of this study guide is on our website as a free download PDF, for each of the 32 key issues.

The Family Solution Finder Workbook:

This book has practical exercises, extended video links and work sheets for each of the 32 key issues. The issue is aligned with the same issue provided in the Family Solution Finder Study Guidebook. A family member will first read the issue in the study guidebook, then take the practical exercise, watch the video, and complete the video work sheet in the Family Solution Finder Workbook. Because all 32 key issues in this workbook available to learn in advance of the issue presenting in the family journey, they care proactively learn before it is needed. This allows the family member to take time in gather local information from professional services in learning the best way to respond to the issue.



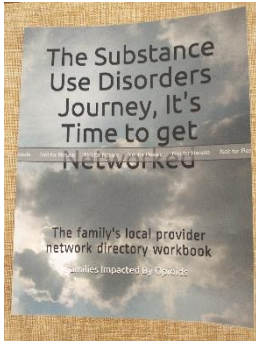
The Substance Use Disorder Journey, It's Time to Get Organized



The Substance Use Disorder Journey, It's Time to Get Organized workbook is used to ***organize the learning*** of the family members for each topic presented in the Study Guidebook and Workbook.

In this book, first the family will complete the Family Transformational Response (F.T.R.) model, to find the solution to the issue. Next the family use the Value Based Family Decision Making Model to determine how the family will respond. Then create a Family Plan of Action to implement their decision based on their solution. At this point the family has learning the topic (study guide), completed the practical exercise to apply in their real life, (workbook) the in this book identified the solution to the issue, made a decision on how to move forward and create a plan of action in who will do what by when. For each of the 32 issues.

The Substance Use Disorder Journey, It's Time to Get Networked



The Substance Use Disorder Journey, It's Time to Get Networked workbook is used to identify what community agencies and professional services are available to assist the family with each issue.

The family will take their work in the previous books to a licensed professional for review and consideration of next steps.

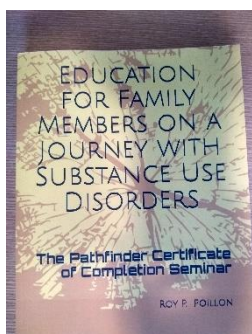
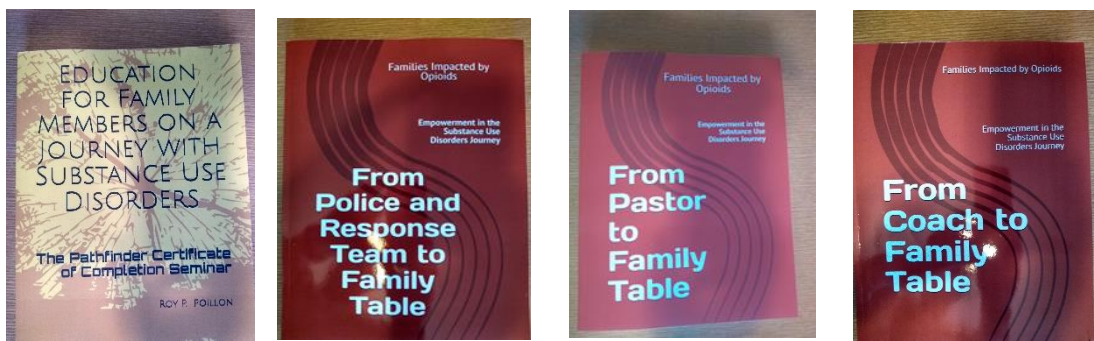
This workbook becomes the Family Provider Network Directory. It is set up in advance of needing these resources. The family is empowered.

To order any of these books: Go on-line to www.amazon.com search Roy Poillon or title provided above.

A Typical Meeting Agenda:

- I. Introduction
- II. Power Point Presentation
- III. Practical Exercise
- IV. Group discussion
- V. Conclusion

Educate the Local Community and Provider Staff

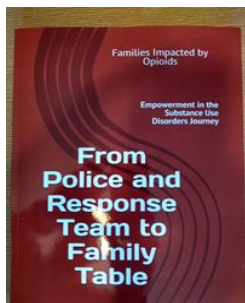


Education for the Family Members on a Journey with Substance Use Disorders book:

This book is used in developing clinical and non-clinical support staff to increase their awareness of the “Family Members living with Substance Use Disorders Journey”. Also, this is a great book to offer those who are not directly involved in the substance use disorder occurrence but would like to know more about the disease.

The contents of this book are “The Pathfinder Certificate of Completion Seminar” and it’s 12 issues pulled from the 32 issues found in the Family Solution Finder Learning Series books. This book can be given to any clinical organizations, Veteran Family members, hospital staff and physician office staff and political leaders staff. Your organization’s contact information can be placed inside. All four category levels (I-IV) of the Family Solution Finder Learning Centers can use this book.

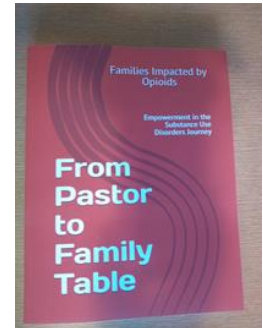
From Police and Response Team to Family Table:



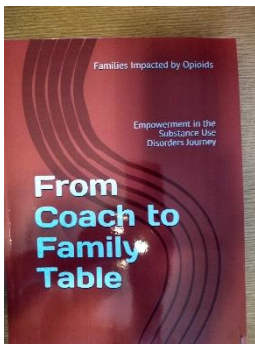
This book is used by your organization, to give to your local police and first responder teams, for them to give a family during or after an overdose intervention. The police and first responders can also use it to train their own staff members on the family’s whole journey with this epidemic. This book can also be used by police as part of their local community engagement program. Your organizations contact information can be placed inside. All four Family Solution Finder Learning Center Category Levels (I-IV) use this book

From Pastor to Family Table:

This book is offered to the Pastor and Ministry Leaders of a faith organization to give to the family members within their church who are on a journey with substance use disorders. Often, Family members especially mothers will seek advice from a minister or priest. This book can be given from the Pastor to train their staff and leaders. It can be delivered as a lunch and learn or take-home study. Your organizations contact information can be placed inside. All four Family Solution Finder Learning Center Category Levels (I-IV) use this book



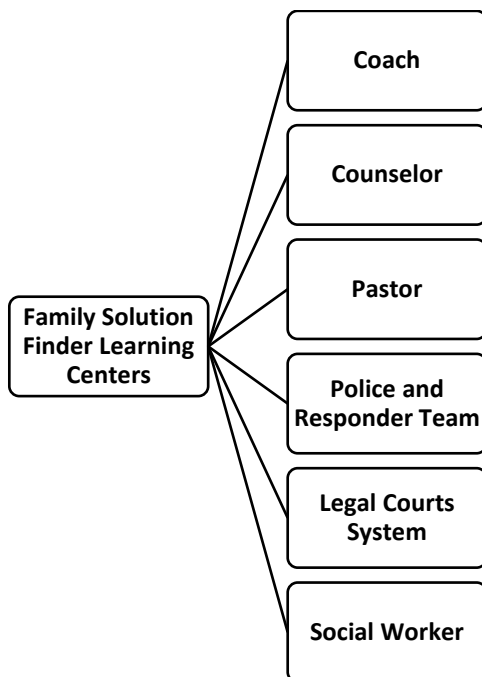
From Coach to Family Table:



This book is offered to the sports coaches. When a family or player when they are identified as a family who is going through a journey with substance use disorders this will be a kind act of caring. In many communities our coaches are looked up to for their advice and guidance. They are on the front line of our families (children) and will be able to pass this book through a player to the family members. This will empower coaches to have a way of contributing to the value of our community by being an asset towards empowering our families. Your organizations contact information can be placed inside. All four category levels (I-IV) of the Family Solution Finder Learning Centers use this book.

The Pathfinder Certificate of Completion Seminar Book,

(Educate the community agencies and provider staff)

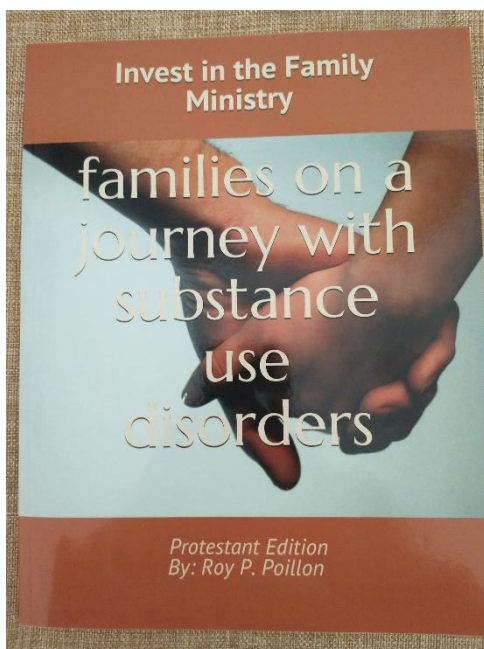


Everyone in the community, where the family members go for support, will have a stronger understanding of the family's journey living with substance use disorders.

As a Family Solution Finder Learning Center Level III you will call on the community to provide education using the Pathfinder Certificate of Completion Seminar Book, Power Point Slides and Download PDF meeting handouts. All the content for the meeting is provided.

Educate the Places of Faith Practice

By providing a ministry for family members living with substance use disorder.



This is a turnkey model for starting a ministry at your place of faith practice for family's members living with substance use disorders. The User Manual and Volunteer Guidebook provides Four (4) programs:

The Purpose Driven Ministry, trains the ministry volunteers and provides structure to the ministry with roles and responsibilities.

The Family Solution Finder Learning Series, is the education program for the family (32 sessions covering the entire journey of the family members)

The SP~ARK's Program, which assist the individual family member in determining their level of faith practice

The M.O.R.E.S. Program, for setting up a local community directory for these family's based on the 32 known issues they are likely to face. All this is provided in the "Invest in the Family Ministry. Also, all support materials are ready to use and online (free) as downloads. A Catholic Edition is also available.

The Families Impacted by Opioids staff will provide On-line training for your leadership core team.

Call Us: 440.385.7605.

Typical Meeting Agenda:

Group discussion

Education (choose an issue of the 32 key issues)

Breakout group table discussion regarding education topic

Spiritual develop review ideas, and progress

Conclusion, group discussion

Educating the Local Faith Practice Organizations



The best way to learn about the “Invest in the Family Ministry” is to take time to complete Seminar # 12. Use the Study Guide, Workbook, Power Point and Practical exercise. Then read the “Invest in the Family Ministry User Manual and Volunteer Guide”

Seminar Twelve: Study Guide

Seminar Objectives:

- 1. A review of how faith and suffering are presented in the substance use disorders journey.**
- 2. Consideration of how to create a personal response to the issue of “where faith fits into the family lives” as it relates to three key areas: 1. Education, 2. Spiritual Development and 3. Family Referral Resource networking.**
- 3. How to start an Invest in the Family Ministry.**

These are the 12 Key Issues a Family Faces

#1 Enabling vs Consequences

#2 Addiction Behavior

#3 Family Intervention

#4 The Police

#5 Emergency Medical Services

#6 Legal Court System

#7 Treatment Centers

#8 Support Agencies
Mapping

#9 The Relapse

#10 Successful Lifelong Recovery

#11 Bereavement (Learning how to move forward)

#12 Faith, Spiritual Practices



Introduction: Faith, Spiritual Practice

How can churches help find a solution to the drug epidemic? It seems simple enough, Churches are focused on God, have families in their congregation that are experiencing this epidemic and have knowledge of how to practice faith in suffering. It would seem all three elements exist in what a family experiences on their journey with substance use disorder. However, even though doctors, counselors, politicians, prosecutors, mayors and treatment centers have all converged to address this issue, the churches have been the least committed to provide a family focused ministry for this large population.

This is the purpose of “Invest in the Family Ministry”, a church-based ministry for family’s experiencing the substance use disorder epidemic. What has been the case for many churches is most do not have the strategy, structure, process within their existing ministries to adapt and support the unique blend of needs required by this group. Also, their family’s needs are not only of a spiritual nature; but include education learning about what the journey with substance use disorder will entail, how to use their faith practices in their suffering. This is a complicated disease only further exasperated by a social stigma which prevents families from seeking help. It becomes more elusive when they do not know where to begin. The “Invest in the Family Ministry” clears up all these issues so they can focus on giving this over to God.

The “Invest in the Family Ministry” model offers a home in your church for these families by providing:

1. Education Learning Seminars,
2. Spiritual faith practice development paths,
3. Networking to support referral resources.

It is a harbor (Ark) in the storm; so they can get educated, organized and networked. These are the key elements needed to empower a family. Knowledge is Empowering.

The Invest in the Family User Manual is designed to be modified so it meets the specific attributes of your faith practices. By meeting the family in their suffering and coming to their level we do God’s work better, than if we ask the family to rise to our level. The education seminars and spiritual development tracks can be self-administered by the family in their home, at your Church as a group or in a large seminar where the community is invited.

This same approach (meet them where they are) is designed in the ministry model to provide “spiritual development” as a starting point. Again, not asking them to rise to where we are, but rather meeting them where they can grow best, from their world. Given that every family is different, it will be theirs to decide the best path for their family, it is our role to provide options and support in how to move forward.

In connecting the family to referral resources, often a family does not know where to begin, what to ask for, what to expect. This is another role of the ministry. The family’s needs will change over time. So will their required support needs change. The ongoing ministry will assist in matching the right level support at each stage of their journey. They will not have to travel this road alone. But first there needs to be a ministry to fulfill this purpose, with purpose driven volunteers.

Hope is Faith in Practice

Addiction recovery is about more than just the absence of drugs in your system. Recovery from drug and alcohol addiction is a complex process and journey. Many parts are unknown and to step forward, one needs to place their faith in front of themselves and rely on Hope that God's promises are real and will be given to you.

In many ways understanding our journey is more than being proactive, it is our part of the deal in receiving God's grace, i.e. we need to do our part. Getting educated or providing education about the issues faced by a family might be for you, part of that deal. Get educated and share what you have learned.

The other area that we can take charge of is to open ourselves towards spiritual development. To strengthen those areas where we see ourselves needing improvement or more understanding. Taking ownership of how well we practice our faith and share it with others.

The third area of Hope is knowing where to go to find help and assistance, to ensure the best possible results. We feel a greater sense of Hope when others around us know how to help. Building a network of referral partners is a way to build hope in your future.

1. Get educated on the journey
2. Develop our individual spirituality to strengthen our faith practices.
3. Build a network hope, by having the right people to help by bringing the right level of skills to address the issues you are likely to face.

A Faith-Based Approach to Family Empowerment and Intervention

True faith is more than hope. It's trust. When you trust yourself to do your part, trust your loved one to take responsibility for their own life, and trust God to take care of the rest, that is genuine faith.

Accept the Things You Cannot Change

Family members often unwittingly take responsibility for things that are not their responsibility. Here's who's really responsible for what...

The family is NOT responsible for:

- Shielding the substance user from the natural consequences of his or her actions
- The emotions or hardships of the substance user
- Feeding and sheltering adult children, especially when they lie, steal and disrupt family life

The family IS responsible for:

- No longer enabling their loved one to be comfortable in addiction
- Arranging professional intervention and addiction services for their loved one
- Setting clear boundaries
- Attending to their own needs

The addict or alcoholic is responsible for:

- Admitting he or she has a problem
- Accepting help when it is offered

- Doing the hard work to overcome addiction
- Committing to long-term recovery

Have the Courage to Change What You Can healing

Substance users avoid addiction treatment because it's a difficult process to go through in order to achieve the reward of a sober life. Families likewise avoid intervention because they don't want to go through the difficult process of saying "no" to their loved one and weathering the emotional firestorm that it will bring.

To get through this process, families need two things:

Courage: Yes, this will be uncomfortable. Yes, your loved one will probably say that they hate you for refusing to continue accommodating them. Yes, you can weather the storm and enjoy a better life if you have the courage to do so. If you calling is to serve, then follow these steps. If it is to understand, then complete this study guide and work book seminar.

Create a Ministry Model of Your Own

In our brokenness we find the long reach of our Lord, our savior Jesus Christ. It is from our weakness where we come together and ascend; because of His grace given freely to us all, He includes those not invited to the banquet of others. We are all called to serve those that cannot serve themselves, as in the Good Samaritan, we seek the broken hearted and build a vessel of refuge for their healing. In providing an "*Invest in the Family Ministry*", such an act of kindness, mercy and love is given to all.

Because no one knows when the thief will come by night, what he will steal or how our hearts will become ill with anxiety and fear, we must prepare ourselves within our spiritual development. It is not enough to become educated about the disease or networked into referral support services. This is the battle of good and evil, and we will fight it from our lowliness and weakness, because from there in our emptiness is our greatest strength, our lord God who gives to us His all. It is His promise in answering our prayers that we have hope. Let's stand up to stand together, from within this ministry, we will form our response to this our pain and suffering with the drug epidemic, a disease that kills our children and loved ones.

The *Invest in the Family Ministry* will start with a calling to all within the church who suffer in this epidemic to come and consider being involved in this new ministry, a calling to serve. From the church members some will lead, others will work, and many will follow but all will grow in their individual spiritual development.

There are four pillars in the ministry design

1. **Culture:** As a ministry we are covering issues that family members are likely to face and provide for them a safe place to learn and grow by strengthening their continence as a family. This ministry will educate them on their journey, develop their spiritual faith and assist in guiding them to referral support resources both inside the church and from their local community.
2. **Structure:** As a ministry they will find a formal organization structure to support the process and implementation of the ministry services. It will require volunteers to be assigned specific roles and responsibilities supported with volunteer training and strong formal communication channels.
3. **Process:** The process consists of those programs that our ministry will provide, how these programs will be delivered and what should be the expected outcome. This will be the ministry's workflow.
4. **Implementation:** How the ministry is presented to its members is important; from preparation through the final event, and then follow up. How the ministry communicates is important to ensure the most effective results. How the ministry develops and nurtures the culture of the ministry is important, to ensure it stays true to the teachings of the church in the practice of our faith and ministry.

This Ministry Development Model has Four Programs

1. **The Purposeful Driven Ministry**, creates structure, process and implementation, managed by purpose driven volunteers. It takes three volunteers to create the initial leadership in starting the ministry.
2. **The Family Solution Finder**, to educate the family on a journey with substance use disorder. The learning seminars are provided. One seminar for each monthly meeting. There are 32 seminars that cover the family's entire journey with substance use disorder. These are read, plug and play seminars, no experience required.
3. **The SP~ARK's Program**, to provide learning resources and planning guides for spiritual development. In accordance to your faith, the individual family member will create their own plan for their spiritual development.
4. **The Family Resource Coordination, M.O.R.E.S. Program**, connects families with resources and services available from the church and local community.

This is empowerment, and these are the pieces made available through one single ministry, focused on your church family needs. It connects the church to the members that suffer, meeting them in their world, to love one another as God so loved us first.

Once the ministry is up and running, there are three programs that create content for a monthly meeting:

1. The Family Solution Finder
2. The SP~ARK's Program
3. The M.O.R.E. Program.

I. MINISTRY CULTURE IS A PILLAR

There is work that must be done.

How is this accomplished?

By identifying to the volunteer "what work is needed", be clear, be precise, and be brief. Understanding that everything has its season and time. Those that volunteer need to understand "**what are they being asked to do**". Such direction will come from their direct leadership. A plan can be easily set-up to follow throughout the year. The process and structure will be set-up to support their personal spiritual development training and volunteer activity. We invest first in those who volunteer.

The time required to do this work

How is this accomplished?

By identifying how much time it will take to complete each task, a volunteer will have a better understanding regarding the scope of their work contribution and compare it to their commitment in volunteering. Our culture is that "God makes big things from little acts". Therefore, little acts by volunteers will add up to bigger things. We invest in our ministry's.

Volunteer work requires growth

How is this accomplished?

The spiritual development and growth of our volunteers' needs to be consistent (for all volunteers) moving forward. The objective of the Church ministry is both for the spiritual development of the family and the ministry volunteer. From within the spirit of the volunteer is God's love, to be shared in their visits with acts of kindness and mercy. Let's repeat this: "It does not come from the ministry; it comes from the volunteers". The volunteers are the *pearl of the Church*, like an oyster nurtures a grain of sand to one day become a beautiful pearl to be shared, so does the Church support a ministry that nurtures the volunteers to then go out and ministers of our faith. One little act begets the other, and the other....

The spiritual development objective will be supported with a continuous training schedule for the volunteer, based on their personal goals with the goals & objectives of the ministry. A "culture of growth" is something that is formed, not something that just happens. When a volunteer grows in their spirituality, the ministry grows in spirituality, the Church grows in mercy and all experience the sharing of God's love which comes alive as we share in communion with Him. When we invest in our Church, all can grow together as one.

When the volunteer prepares for a visit, they will be asked to become familiar with their material which they will present during the visit. This preparation becomes a part of the volunteer's spiritual development. The adage, "*there is no better way to learn something, than to have to teach it*". This dual development is built into the structure and process of the ministry. Both family member and volunteer share in the experience of renewal, discovery and application as to what the Holy Spirit is guiding us towards.

Create a Mission Statement

Create a Mission Statement Work Sheet

The mission statement allows other to understand what our ministry is about, what we want to accomplish, how we will do this and who it will impact.

I. First Understand "Who You Are" As A Ministry

Three Values:

A value is a core priority for the ministry.

1. The spiritual needs of others.
2. Bringing to and being Christ for Others.
3. A volunteer who is in a constant state of spiritual development, is one who values their spirituality.

What are you competent in doing:

1. Being a Good Listener, we see first to understand, before we try to be understood.
2. Organizing towards a purpose driven response.
3. Providing resources to help people develop their spirit and soul.

What is our goal:

1. Being the communion of Christ to the family's members impacted by the drug epidemic
2. Each family member will have an individual spiritual development plan
3. Each volunteer will have their own individual spiritual development plan
4. All family members will learn the issues that will come next in their journey.

Who receives our ministry service?

Internal Customer: Staff, Church Volunteer and their families.

External Customer: Family's members impacted by the drug epidemic.

Ancillary Customer: Local community services.

Why are we concerned that we do this?

1. God is inviting us to be concerned.
2. A love for one another.
3. Because we know they are suffering.

II. How to set up the Mission Statement Structure

State the purpose and values

Our purpose is to..... Care for the education and spiritual needs of others, both our families and our volunteer's.

Our values are.... Organizing our purpose to provide learning and developmental resources that match what is effective to their needs.

State the responsibilities of the ministry to the family members

It is our responsibility to..... Work with each person as an individual person in Christ.

State the main objectives that support the ministry

We seek to Attach the family through our volunteer to Christ communion through us all by being present in their lives.

Mission Statement (Sample)

Our mission is to share God's love with the homebound, in a faith journey of their lives and ours in service to the lord, to the greater glory of God.

Create a Vision Statement

Create a Vision Statement Work sheet

I. First understand, "what you want to become"

A vision is a focal point for planning as to where you want to be in the future. It is stated in 3, 5-year period. It gives direction as to where the ministry is going, how they will look. It should be inspiring.

What will the ministry look like in 3 years?

People it serves:

Families members it educates

People volunteering within the ministry:

Quality of the service:

What will the ministry look like in 5 years?

People it serves:

Families members it educates

People volunteering within the ministry:

Quality of the service:

Include vivid descriptions, the image it creates

State an attractive image, make it motivational

Image of Three Years:

Image of Five Years:

Why is what we are doing important

II. Building the structure of a Vision Statement

The Invest in the Family Ministry sees our future in the next 3 years as having.....

And in the next 5 years this ministry will be.....

We believe this is important in order to.....

We strive to be a faith community whose gratitude for God's countless blessings is expressed in our prayerful relationships with Jesus Christ. We provide a compassionate service to those in need, and joyful welcoming to all people at the celebration of our Church life.

Ministry Vision (Sample)

The "Invest in the Family Ministry" in five years will have approximately 50 families on service at any given point in the year. These families will be gaining skills and understanding about the substance use disorder journey through "The Family Solution Finder" learning program seminars. They will be engaged in some type of personal or family spiritual development learning track from the SP~ARK's Program and will be connected to support services through the Family Resource Coordination M.O.R.E. program. From this both volunteer, Church and family members are receiving the acts of mercy the Lord shares with us all. In this we share freely that which has been given to us from God, as stewards of His grace for others to share.

Create a Philosophy Statement Work Sheet

The philosophy statement tells others how you see the world around the ministry and what value the ministry bring into this world.

I. First Understand what guide the Ministry, Principles, Beliefs

What is the ministry's Principle?

The main reason this ministry exists is to:

- 1.
- 2.
- 3.

What are the ministry's Beliefs?

The ministry believes in:

- 1.
- 2.
- 3.

In Theory we are made up of:

- 1.
- 2.
- 3.

How will this be used to benefit others:

- 1.
- 2.
- 3.

II. Building the Structure of a Ministry Philosophy Statement

What you are:

The philosophy of Invest in the Family Ministry is a combination of

Why we do it:

We base this on the foundations of.....

How we do it:

This is done by

Why it is important to do:

This will give those the ministry serves.....

Ministry Philosophy (Sample)

The spiritual development and growth of our volunteers' needs to be consistent (for all volunteers) moving forward. The objective of the Church ministry is ministering our faith practices and spiritual development to the family members on a journey with substance use disorder and Educating them about the issues and challenges they will likely face while connecting them to resources that support them along their path. From within the spirit of the volunteer is God's love to be shared in their visits, through their acts of kindness and His mercy. Let's repeat this: "It does not come from the ministry; it comes from the volunteer". The volunteer is the pearl of the Church, like an oyster nurtures a grain of sand to one day become a beautiful pearl to be shared, so does the Church support a ministry that nurtures the volunteer to then go out and minister to others.

Invest in the Family Ministry Culture

It is through a desire to please God that we seek to serve Him by obeying his commandments to "Love One Another". As a Church, it becomes the soul of who we are as disciples of the our faith. As a volunteer, as a believer and as a child of God. Discipleship is what we do.

In our Invest in the Family Ministry culture, we believe it is possible to harness the gifts of our volunteers in a new way. Their desires to share God's love, their wanting's to be obedient to His word, is alive. This desire to serve will become our sustainable ministry focus, is practiced through a design which feeds the spiritual development of our volunteers, as they serve in our ministry's. It is our structure, process, training and a willingness to try and at times possibly fail, while knowing that God oversees all that we do, this is where we will sustain and grow our ministries.

The first assumption is that all of us, in the Church seek our Church ministry to be alive and functioning at its fullest potential. If "good enough is enough" then we will not bother doing any of this, we know it would be futile, because maintaining the status quo is a pathway to failure.

By following this ministry use manual steps and adding a flavor of our own we will create something that is exciting and forward thinking. We will be bold in prayer, assertive in faith and know that our God is here, every step we take.

YOUR MINISTRY’S CULTURE

Mission Statement:

Vision Statement:

Philosophy Statement:

Values Statement:

Issue # 12: Faith, Spiritual Practices Seminar



Seminar Twelve: Workbook

Download the power point presentation, practical exercises, and handouts for this seminar. This is a practical exercise where you will learn how to provide a learning seminar.

Seminar Objectives:

1. Review the need for faith organization participation.
2. Create an Invest in the Family Ministry.
3. Offer the Invest in the Family Ministry at your place of worship.

It is through a desire to please God that we seek to serve Him by obeying his commandments to “Love One Another”. As a Church, it becomes the soul of who we are and in our ministering of our faith, this becomes what we do from within the structure of the ministry.

We find most Churches are not set up to provide purpose driven Church ministry’s, with highly effective volunteers. In its place where excuses of “because, that is the way we’ve always done it” statements are perceived as “go away, don’t bother me, can’t you see I am overloaded”. This can become a combination of wasted spiritual gifts inside our volunteers and valuable ministering experience from those leaders that could have inspired others to serve in ministry.

But it is possible to harness the gifts of our volunteers in a new way. Their desire is to share God’s love, their desire is to be obedient to His word. These can become the volunteer’s shared gifts and will create a sustainable ministry program that is designed to feed the spiritual development of the volunteers, the families and Church. What is missing is structure, process, training and a willingness to fail, while knowing that God oversees all that we do.

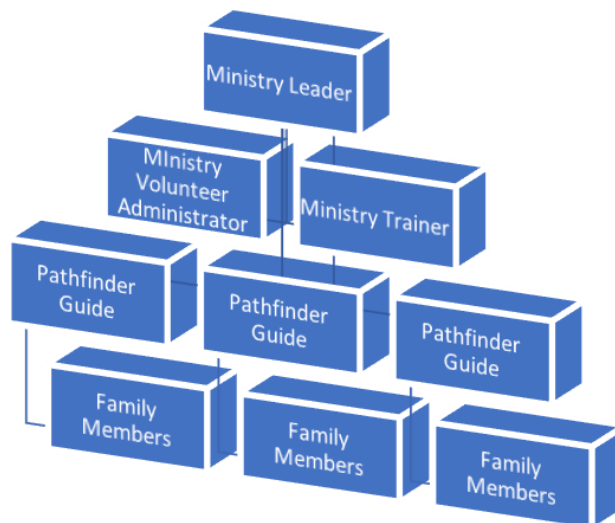
The first step is to develop the **culture** from which the “Invest in the Family Ministry” will operate. This is done when leadership gathers those who will volunteer and asks them, “What are your **VALUES**, what are your **BELIEFS**”? Once this is out in the open, the leadership can ask, “*how do you want to serve the Lord our God*”? And with their answer, build an organized ministry supported with processes, training and budget. This is how an organization can set a new path, one where those who will travel it, help to design it, and therefore have ownership in how well it works in serving the needs of others with God’s mercy, love and compassion.

The first assumption is that a Church leadership seeks their Church ministry’s alive and functioning at its fullest potential. If “good enough is enough” then do not bother going any further with this ministry development. It would be futile, because maintaining the status quo is a pathway to failure.

This section will outline how to take a culture and design a sustainable, successful Purposeful Driven Ministry, with Purpose Driven Volunteers.

Please follow these implementation steps and add a flavor of your own to create something that is exciting and forward thinking. Be bold in prayer, be assertive in faith and know that our God is here, every step we take.

The structure of a ministry is where all this comes alive.



Identify the three main programs of the ministry



Issues the Family Faces

VIDEO ONE:



ASSIGNMENT VIDEO: On www.youtube.com/

Search Title: How to Start a Church Ministry | Mission, Ideas, Organizing, Leadership, and Money



[Street Bishops](http://www.StreetBishops.com)

How to Start a Church | Start a Ministry | Mission, Ideas, Organizing, Leadership, and Money
<http://www.StreetBishops.com> What is keeping your from starring the ministry that the Lord has put on your heart? Now is the time to take the lead from the Holy Spirit and take action towards starting your ministry. This video will provide you with the first steps leading to a successful start. This video addresses the following: how to start a ministry how to start a ministry with no money how to start a ministry step by step how to start a ministry from scratch how to start a ministry business how to start a ministry blog how to start a ministry online Email Rev Lance at secretary@streetbishops.com for clarification of any issue touched on in this video. Do you want a ministry coach that will guide you towards you successful start up? Lance is

Duration: 19:27

Link: <https://www.youtube.com/watch?v=vTYIkH9-JHo>

Ministry Leader, Process is Leadership

Ministry Leadership:

The Ministry Leader will meet with the Ministry Administrator and Ministry Trainer to review status of education, development and networking resources for each individual ministry member. The review is conducted quarterly to determine if the programs offered are being utilized and if the meetings are on target towards developing the needs of the ministry members. The members

are not held accountable to progress in any of the two programs. But if they are taking these programs, we want to confirm the programs are meeting their needs and obstacles are removed.

Family Education is Leadership:

The ministry leader will focus a portion of their time in speaking with the group during monthly meetings, to facilitate healthy, supportive relationships within the ministry. and grooming the experience of a selected few to take the roles of leader, administrator and trainer (succession planning steps) at some point in the future. Their focus will also be on affairs outside the ministry. The leader will be notified by the Ministry Administrator if a family misses three or more consecutive meetings, to call and follow up with that family. This supports our ministry culture “No Family Left Forgotten” Policy.

Because family education equals family empowerment, this area will likely take up most of the leader’s time.

Family Spiritual Development is Leadership:

The Ministry Leader will have an annual meeting to design the individual spiritual development plan with the Ministry Administrator, Ministry Trainer and Ministry Pathfinder Guides. Although we are all titled volunteers, our true calling is in being disciples of Jesus Christ. This is the reason for the development of our combined spirit. We believed that our Church of volunteer’s are also Disciples of Jesus Christ created for a greater service to the Lord as we respond to His call to serve others. For this reason, the Ministry Leader will oversee all members of the ministry who choose to participate in the Spiritual Development SP~ARK’s Program.

Family Resource Networking is Leadership:

There are many resources available to assist the ministry, its volunteers and members. The Ministry Leader will ensure that a balanced list of Govt, Private and Professional resources are made available to the ministry membership and connection to inner Church ministry’s is also included to this list.

A TYPICAL MEETING AGENDA:

- I. Welcome & Update Announcements
- II. Family & Pathfinder Guide, Small Group Session
- III. Family Education Seminar, Large Group Session
- IV. Networking Connections, Large Group Session
- V. Conclusion and next meeting assignments

MINISTRY MONTHLY MEETINGS

In the monthly meetings is where all education learning track will be presented. The ministry is designed to hold monthly meetings. Each meeting will be led by the Ministry Trainer and Ministry Pathfinder Guide. The next meeting agenda will be announced at the end of all previous meetings.

Process Family Member Education: “The Family Solution Finder” Program

- **The Pathfinder Segment:** Because each family is assigned a Pathfinder, they will begin their meeting with a time to breakout and address issues that are current, open for discussion with their families. **20min**
- **The Small Group Segment:** Then as the meeting progresses, all the small groups will gather together and share challenges that are common to everyone’s concerns. **20min**
- **The Large Group Education Segment:** A selected Learning Track from “The Family Solution Finder “Learning Seminar Library will be given to the large group audience. **1hr.**

Process Individual Spiritual Development: SP~ ARK’s Program

- The individual family member will be invited by their assigned Pathfinder to complete a voluntary personal assessment to more clearly determine where they are in their faith practices.

- The individual will complete an “annual development plan” based on the results of their personal assessment and desires to learn more about their faith. A subscription to an on-line religious education site will provide the necessary learning selection tracks.
- The Ministry Pathfinder Guide will ask the individual about their spiritual development progress during the meeting. If follow up is needed, this can be completed in a dialog outside the group meeting time.

Both the Education Learning Seminars and Spiritual Development programs are not required for a ministry member to be a part of this ministry. However, most families will likely participate in at least one.

Process Family Referral Resources Networking: M.O.R.E. Program

- The family will be invited to complete a “Current Needs Assessment” Worksheet prior to the meeting which will be brought up for discussion with their Pathfinder. This worksheet will aid in directing both parties to find the right level of support for the family to follow up with in the month to follow.
- The Pathfinder will present these sheets to the leadership, if finding resources is difficult or a connection is not to the family’s satisfaction.



Obstacles the family will likely address

Typically, volunteers come to a ministry under-trained to do their assigned tasks.

7 Habits of a Highly Effective Volunteer

To become a “Highly Effective Volunteer” there is work on the volunteer’s part to make the choice that they are going to take the time to volunteer. Because our time is valuable, it only makes sense to do it to their best ability.

Given that volunteering has typically been practiced as a “learn as you go” job, few are trained in the art of volunteering, and even fewer are trained to be leaders.

To be Highly Effective as a volunteer, training is going to be necessary.

To guide the volunteer in their training, it is helpful to consider the top habits that other successful volunteers have used in the course of their lives as volunteer’s. What better way to learn than from someone who has already learned those habit’s which are required on how to be effective.

Habit # One: Reading and Obeying the word of God.

Habit # Two: Active Prayer Life.

Habit # Three: Setting Spiritual Goals.

Habit # Four: Cultivate the Talents of Others.

Habit # Five: Take Responsibility for Their Souls.

Habit # Six: Service to Others.

Habit # Seven: Remain Focused on Eternity

Highly effective volunteer’s lives are powered by God. When in a situation, they know the scripture, they know what God says about each life situation, and they can quote it, to remind themselves of what Jesus would do or say.



Solutions to Issues & Obstacles

SOLUTION ONE: Educate the Family about their journey

The Family Solution Finder

Workbook



Four Learning Tracks

There are four (4) learning tracts in the substance use disorder learning seminar’s library. These seminars are not sequential; therefore, each can stand alone and be delivered on an as needed design. The seminars can be self-administered, presented in a small support group, as a ministry monthly meeting or as a larger Church wide, local community seminar.

Learning Track One: It’s About the Family Dynamic

The Family Is a System, Seminar: The goal is to 1. Be able to identify the four domain parts in the family system 2. Identify how functionality and potentiality impact the family’s desired outcomes 3. Use the Functionality and Potentiality worksheet to understand each family member capability to work towards a common goal.

Different Roles of Family Members, Seminar: The goal is to 1. The attendee will be able to name the eight (8) roles family members play within the family system dealing with substance use disorder. 2. To identify which role applies to each family member using the list of eight roles in the family system. 3. Using the “Family Roles Worksheet”, the attendee will be able to provide their understanding of each role and how that person might respond to a family issue, given their role in the family system.

Childhood Trauma and Substance Use Disorder, Seminar: The goal is to 1. Increase the awareness of the impact childhood trauma has on teenager and adults in their resilience towards using drugs. 2. What scales are used to determine the level of trauma. 3. What are the diagnostic tools used to identify childhood trauma.

Different Types of Family Therapy, Seminar: The goal is to 1. Identify the 8 foundations of family therapy 2. What is Multi-Dimensional Family Therapy and how is it different from other therapies 3. What are the other therapy models for families on a journey with substance use disorder?

The Four Primary Family Support Structures, Seminar: The goal is to 1. The attendee will be able to name the four (4) primary family support structures. 2. The attendee will be able to identify organizations within their geographic area that provide services for the family to access within their geographic area. 3. Using the information identified within these exercises the family will complete their family plan of action with information needed to access services from the four primary family support structures.

Learning Track Two: Getting Educated about the Disease

Getting a Diagnosis, Seminar: The goal is to 1. Identify the warning signs of addiction 2. List the primary assessment tools used to create a diagnosis 3. Understand how to use the diagnosis information and respond to the family.

Substance Use Disorder is a Disease of the Brain, Seminar: The goal is to 1. Identify how the brain works with and without substance use disorder 2. Create an understanding of why it is a disease of the brain 3. Develop a working knowledge of how this is a lifelong disease.

The Disease Progresses in Stages, Seminar: The goal is to 1. Identify how disease progress 2. Create an understanding of what is required to manage the progression of the disease 3. Have a working knowledge of what to expect in each stage of the disease.

Relapse is Part of the Journey, Seminar: The goal is to 1. Understand what causes relapse to occur 2. Identify the three stages of relapse 3. Have a working knowledge of how the relapse stages are assessed and then managed.

Learning Track Three: Getting Organized Around the Disease

Obstacles a Family Faces in this Journey, Seminar: The goal is to 1. Identify the 12 Key Family Obstacles 2. Apply this model to the family's current situation 3. Determine how the family can proactively address the obstacle.

12 Key Issues a Family Faces in Substance Use Disorder

This section of the learning tracks qualifies the Family to be certified as “Completing the Essential Learning Tools” The Families Impacted by Opioids (C.E.L.T.) and is supported in a bi-annual conference “Addiction and Family Empowerment”. The goal of completing the C.E.L.T. offered by Families Impacted by Opioids is ensure the needed selection of instruction has been provided to the family members in empowering the family for their journey with substance use disorders. This is a confirmation that you have completed this part of the course material. This certification is only for identification of completion and has no formal or informal education credits provided.

The 12 Key Issues Family Study Criteria

ISSUE # 1. Enabling vs. Disabling

Goals: 1. Learn the 10 Types of Enabling, 2. How to deal with an enabler who is in denial of their enabling behavior, 3. Understanding how to change enabling behavior.

ISSUE # 2. Addiction Behavior

Goals: 1. To learn the behavior traits of substance misuse, 2. To understand how the behavior progresses and changes over time. 3. To learn how to responds to these behaviors.

ISSUE # 3. Family Intervention

Goals: 1. Identify the five stages of change, 2. Learn the ten processes of change. 3. Gain an understanding dual diagnosis, mental health condition.

ISSUE # 4. The Police Intervention

Goals: 1. Identify the six phases of Police intervention, 2. Learn the Do's and do not's of a missing person's report, 3. How to complete a missing person's report.

ISSUE # 5. The Emergency Medical Services Intervention

Goals: 1. Understand the paramedic first response phrase, 2. Learn what happens in a hospital emergency room visit. 3. Understanding the value of SBIRT.

ISSUE # 6. The Legal System Intervention

Goal: 1. Have a working knowledge of the Sequential Intercept Model (SIM), 2. Finding an attorney, 3. What is Drug Court.

ISSUE #7. The Treatment Center Intervention

Goal: 1. Determine the right level of treatment, 2. What is Intensive Outpatient Treatment, IOP. 3. Communicating with Treatment Center Staff.

ISSUE #8. Support Agency Mapping

Goal: 1. Define family community mapping, 2. Steps to create a family community map 3. Advantages gained by having a family community map

ISSUE #9. The Relapse

Goal: 1. What is relapse, 2. List three stages of relapse, 3. How can the family identify these stages.

ISSUE #10. Successful Lifelong Recovery

Goals: 1. Four main ideas in relapse presentation. 2. Learn the Stages of Recovery 3. How to create a strong support system

ISSUE #11. Bereavement

Goal: 1. Learn the 3 types of grief, 2. Understand the grief cycle, 3. Create an inventory for complicated grief

ISSUE # 12. Faith, Spiritual Practices

Goal: 1. Review the need for faith organization participation, 2. Create an Invest in the Family Ministry, 3. Offer the Invest in the Family Ministry at your place of worship.

Using the Family Transformation Response Model (F.T.R.), Seminar: The goal is to 1. Identify the five steps in breaking down an issue 2. Learn how to apply the criteria for reviewing each step 3. Gain a working knowledge of using the F.T.R. in a real-life family issue.

Family Decision Making Model, Seminar: The goal is to 1. Identify the sequence of steps necessary to develop a decision 2. Learn the application of each step 3. Create a current family decision and how to take that result to use in a family plan of action.

SOLUTION TWO:



Spiritual Development of Family Members & Volunteers

From a review of many Church ministry's we find people who desire fulfillment by sharing in God's love through the gifts of volunteering. In the bible we read: "The third time he said to him, "Simon son of John, do you love me?" Peter was hurt because Jesus asked him the third time, "Do you love me?" He said, "Lord, you know all things; you know that I love you." Jesus said, "Feed my sheep". John 21:17

In many ways the Church, is Peter, the families on a journey with substance use disorders are the Lord's sheep and Jesus Christ calls the Church to feed them. He did not say feed some of my sheep, some of the time.

It is with this understanding that a Church needs to have a deliberate and responsive structure that reaches out into our family's homes and shares God's love. This is especially true for those who are not able to come to the church for a sharing in the Sunday services and Mass. Here they will find the worship in the Sacred Scripture and Communion as a church family, His family, our community in faith as a family.

It will become the case that unless a Church has designed Family focused ministry program that is purposefully structured by design to support these families, it is likely they will not see the way of practiced faith in their suffering. By ministering to the family, making available education to learn how to survive in this epidemic, they will not be alone or abandoned in their suffering.

In a recent case review, a member of the congregation spoke of a family that has a child experiencing the throws of addiction. This was a person with great faith and commitment, contributed to the church life for years. Unfortunately, from the advancement of this addiction and now brain disease of her child she must stopped volunteering and stopped coming to Sunday service. Her daughter asked for someone to come and visit from the church. Although the church office was contacted, the request had no formal channel to follow and therefore No One Responded. Now because of the stress in caring about this child, the mother and daughter also cannot make it to Sunday services.

They are depressed, and their anger is directed at the church, "where are they, why aren't they asking how we are doing"? What is my faith worth if when I am in need, why doesn't anyone care enough to contact us and help? They are angry because they feel abandon. This church has many ministry programs, but no formal process or structure in place as a response to this type of request.

THE SP-ARK's PROGRAM

There are three (3) levels of programs available to the church within the "Invest in the Family Ministry": The Culture of the ministry develops the ministries volunteers through a) Purposefully Driven Ministry program and b) Habits of Highly Effective Disciples program. The Invest in the Family Ministry model is needed in order to have highly focused ministries that are run by well-trained ministry leaders using spiritually developed volunteers as family Pathfinder Guides.

The SP~ARK's Program sets into place the needed structure, culture awareness and path for volunteers to follow in directing their synergies towards the mission and goals of the Church. The SP~ARK's Program is needed in order to have structure spiritual education which will effectively and consistently meet the needs of the Church volunteers and family members towards the development of their personal spirituality and faith journey.

- The family is an ARK, the same way that Noah had built God's Ark, "*Invest in the Family Ministry*" becomes the families Ark. Building such an Ark is the role of ministry volunteers. This is where God will take His believers into His protection from the storm, He nurtures them with His spirit and covers them with empowerment. Then releases them into the world. So does the Ministry create a place in the family Spiritual - ARK program, with the volunteers who nurture them to be supported and released into the world as a family connected to their faith and practices of the Church.
- The other Ark is from the old testament that of "God's Covenant". In this manner, God's Ark is inside His written word of scripture. This same covenant exists inside the families and volunteers, where the scriptures come a live through education development within the ministry design. To be carried into the home and place of caring of our Church families. The ARK is in the temple of the volunteer and the family. We Stand up to Stand Together as one in the face of our drug epidemic.
- What we are creating is a Culture of "Spirituality, developed in these two Arks' of the Church", SP~ARK's, a new twist on the word SPARK's, to light a fire one needs a spark. To light a Church on spiritual fire, what is needed is the SP~ARK's program, structure, process, training. Designing the Ministry into purposeful ministering, The Volunteer into disciples of Christ and the Family into practicing our faith in worship to the lord during times of suffering and doubt.

We see the Church ministry culture as the spark, the filament it ignites is the volunteer's "their developed spirituality". These lamps are lighted to assure when the groom comes, we will be included to the wedding banquet. The Church leadership desires to bring all its Church members to this feast and celebration. To do this it needs to create a structure where this can all take place. The SP~ARK's Program will build the needed structure, process, roles and training for the Church.

SOLUTION THREE: Building a Referral Network

FAMILY RESOURCE COORDINATION,

The M.O.R.E. Program



The family resource coordination Evaluation (M.O.R.E.) is designed to provide structure and process to networking families into agencies and services that best meet their needs. Here is where the Pathfinder Guide and family meet to review their needs and match them with resource both from within the church and the local community.

I. Take an Inside the Church Inventory

The ministry Administrator will complete a list of church ministry's and their contact information to ensure Invest in the Family Ministry members have this list as a referral resource. They will keep this list available and updated for both Pathfinder Guides and Families.

EXAMPLE:

- The Women's Prayer Group.
- Religious Education Group.
- Men's Fellowship Group.
- Social Justice Group.
- Children's Religious Education Group.
- Spiritual Retreats.

COORDINATION OUTLINE

Recruiting the right mix of services and providers, Operating, and Sustaining Effective Partnerships: A Critical Step in Community Resource Mapping.

Recruiting Partners (Mix of services within your referral network)

1. Prepare yourself. a. Develop a list of desirable characteristics in potential partners. b. Look for diversity among your partners.

2. Develop a common vision.
 - a. Be clear on what you are trying to accomplish within the community (i.e., develop healthy youth equipped with the skills necessary to contribute to the community).
 - b. Understand the needs and goals of the organizations with which you wish to partner.
 - c. Find ways to shape how a partnership will help meet your needs and goals.
 - d. Remind partners that their involvement may give them more visibility within a community.

3. Be clear on the role you want the partner to play.
 - a. Clarity from the beginning will allow you to find the right partners.
 - b. Try to involve decision-makers and top management.

Operating the Partnership, The partnership will be comprised of multiple agencies from diverse backgrounds. All partners should feel a sense of ownership and commitment.

1. Involve top-level people.

- a. Keep in mind what an organization hopes to achieve through involvement in the partnership. Show them how their involvement is working for them.

2. Involve the community.

- a. Inform the community of your vision. Communicate this vision to parents, civic and youth groups, churches, and others who may share your vision.
- b. Involve the community in your work.

3. Get organized.

- a. Make sure your goals are established and that they are obtainable.
- b. Establish policy-making procedures that will frame the work of the partnership (e.g., lines of communication, reporting, etc.).
- c. Hold regular leadership and work group meetings with concise, well-planned agendas.
- d. Assign a lead person in each organization to facilitate the work.

Sustaining the Partnership, It is important to make the partners feel that they are part of something important to the community. Also, it is critical that they see the return on their investment.

1. Support all partners.

- a. Establish committees and workgroups.
- b. Orient and support all new partners.
- c. Mentor any new partners.

2. Make work meaningful.

- a. Rotate leadership.

3. Recognize contributions.

- a. Create opportunities for partners to celebrate success and develop mutual trust.

COORDINATING THE CHURCH OFFICE AND LEADERSHIP

For this process to work smoothly, the Church staff needs to have a clear and practiced understanding of the Organization Chart, Communication Diagram and Process Flow of request to the ministry. The Church leadership needs to support the importance of the staff understanding and using the process as it is designed. A brief 30-minute instruction (Lunch and Learn) should accomplish this level of training.

COORDINATING THE MINISTRIES

By using the “*Invest in the Family Ministry*” seminar and inviting the selected ministries to participate; a standardized understanding can be established. Setting up an ongoing quarterly Church ministry meeting will also help to communicate activity and improve communication.

COMMUNICATION CHANNELS TO CHURCH MEMBERS

The process for the Invest in the Family Ministry has a standard design for communication to the Church staff and Leadership, to the ministries and to the Church members. For the Church members, a direct phone line and email address will be provided. As for the marketing and announcements, these too are standardized for effect and purpose.

Three types of channels are considered:

1. Church members to ministry.
2. Ministry to Church, Church to Ministry.
3. Ministry to Family.
4. Ministry to local community.

COMMUNICATING WITH THE FAMILY

The family will begin the sequence of communication by requesting to learn more about the ministry.

This will necessitate a response from the Invest in the Family Ministry once the Families request has been processed through the proper communication channels.

Then monthly ministering activity will take place to ensure a proper level of contact is maintained. The level of contact will be determined by the family and is subject to change.

Answers and move to “Master Family Plan of Action”:

1. The family member will have a working knowledge of the steps needed to start a ministry.
2. The family member will understand the three different programs to be considered for the ministry: 1. The Family Solution Finder, 2. The SP~ARK’s Program, The M.O.R.E. Model.
3. The family members will purchase The Family Solution Finder Learning Seminars Study Guide and Workbook, The Invest in the Family Ministry User Manual and The Substance Use Disorder Journey, It’s Time to get Organized book.

How to Register a Family Solution Finder Learning Center

To register your Family Solution Finder Learning Centers, you can visit our on-line registration form:

1. <https://familiesimpactedbyopioids.com/registering-as-a-family-solution-finder-learning-center>
2. Call us: 440.385.7605 Cleveland, Ohio



Benefits:

- By registering your learning center, you will receive:
 - FSFLC newsletter
 - FSFLC discounts on book purchases
 - FSFLC private group learning center leaders Facebook page for shared insights
 - FSFLC locator on our website.
- FSFLC will be promoted in your state.
- Update training materials forwarded upon release to your location.

NOTES:

How to Order Books

To Order books:

1. For individual book order (non-case ordering) Go to www.amazon.com and type into the search field the title of the book you want to purchase.
2. **Contact us for a volume book order:**
 - By the Case 20 books/case.
 - Send an order form, we will send you an invoice and confirm with invoice call before processing the order. The quantity ordered will be shipped your shipping address. We order your books from the publisher and your order is shipped directly to your location from their location.



3. **To set up a “Train the Trainer” online session,
Call: 440.385.7605 Cleveland, Ohio.**
 - i. **Train the Presenter, session**
 - ii. **Train the Learning Center Manager, session.**
 - Send check to our office.
 - We notify you to an agreed upon date and time.
 - As many can join as is needed.
 - Duration 1 hr.
 - Agenda and material are sent in advance as PDF documents as well as Power Point Presentation for future training at your location.

How to use the On-Line eLearning program

Go to our website: <https://familiesimpactedbyopioids.com/32-key-issues-learning-series-and-e-learning>

Follow the directions at the top of page. Scroll down and hit each button for downloads.

Each seminar has:

- ✓ Seminar Study Guide and Workbook Handout
- ✓ Power Point Presentation with slide Audio (self-administrated)
- ✓ Practical Exercises and Video Worksheets
- ✓ Responding to Family Issues Process
- ✓ Monthly Meeting Agenda
- ✓ Clinical Paper Handout

This can be used for group presentations, individual and family at home study. It is self-administrated, and no prior knowledge or experience is required.

YOUR ORDER FORM: FAMILY SOLUTION FINDER LEARNING SERIES

Item	Book Title	# Cases (Includes 20 books per case)	Wholesale Price to FSFLC Per book with discount	Wholesale Price to FSFLC Per Case with discount	Amount Due
0100	The Family Solution Finder Learning Seminars Sturdy Guide		\$12.50/book	\$250.00/case	
0200	The Family Solution Finder Learning Seminars Workbook		\$12.50/book	\$250.00/case	
0300	The Substance Use Disorder Journey, It's Time to Get Organized		\$7.00/book	\$140.00/case	
0400	The Substance Use Disorders Journey, It's Time to Get Networked		\$7.00	\$140.00/case	

TOTAL: _____

YOUR ORDER FORM: PATHFINDER CERTIFICATE OF COMPLETION SEMINAR BOOKS

Item	Book Title	# Cases (Includes 20 books per case)	Wholesale Price to FSFLC Per book with discount	Wholesale Price to FSFLC Per Case with discount	Amount Due
0500	From Coach to Family Table		\$7.00/book	\$140.00/case	
0600	From Counselor to Family Table		\$7.00/book	\$140.00/case	
0700	From Community Agency to Family Table		\$7.00/book	\$140.00/case	
0800	From Legal Courts to Family Table		\$7.00/book	\$140.00/case	
0900	From Pastor to Family Table		\$7.00/book	\$140.00/case	
1000	From Police and Response Team to Family Table		\$7.00/book	\$140.00/case	
1100	From Social Worker to Family Table		\$7.00/book	\$140.00/case	
1200	Education for the family members on a journey with substance use disorders		\$7.00/book	\$140.00/case	

TOTAL: _____

YOUR ORDER FORM: INVEST IN THE FAMILY MINISTRY, USER MANUAL AND VOLUNTEER

Item	Book Title	# Cases (Includes 20 books per case)	Wholesale Price to FSFLC Per book with discount	Wholesale Price to FSFLC Per Case with discount	Amount Due
1400	Invest in the Family Ministry User Manual and Volunteer Guidebook Protestant Edition		\$7.00/book	\$140/case	
1500	Invest in the Family Ministry User Manual and Volunteer Guidebook Catholic Edition		\$7.00/book	\$140/case	
0100	The Family Solution Finder Learning Seminars Sturdy Guide		\$10.50/book	\$210.00/ca se	
0200	The Family Solution Finder Learning Seminars Workbook		\$10.50/book	\$210.00/ca se	
0300	The Substance Use Disorder Journey, It's Time to Get Organized		\$7.00/book	\$140.00/ca se	
0400	The Substance Use Disorders Journey, It's Time to Get Networked		\$7.00/book	\$140.00/ca se	

TOTAL: _____

Create a Fund Raiser



This conference presents a study guide book and direction which empowers the family by getting educated, getting organized and getting networked. By attending this conference, the family builds an awareness in how to maximize each step of their journey and leverage this knowledge to seek the best level of care and support. Every family on this journey in Ohio should attend this conference.

They will learn the 12 key issues a typical family faces on this journey, how to get organized and prepared for each issue and how to seek help in building a support network around the family when addressing these issues.

Each family will learn the Family Decision Making Model, how to use a Family Transformational Response model (see F.T.R. Work Sheet) in addressing key issues and how to find and meet those professionals and agencies that are in their community to help. At this conference, we will all **STAND UP to STAND TOGETHER**.

The Family Transformational Response Model (F.T.R.) is a tool: 1. Define the Issue, 2. Identify how the issue impacts the family, 3. Learn how to prepare for the issue, 4. Meet those who are here to help the family, 5. Gain a practical understand of what some of the possible outcomes are.

The F.T.R. model is applied to each key issue to be used by the family members as a tool for the family's success.

*SAMHSA TIP 39 Substance Abuse Treatment and Family Therapy www.samhsa.gov

It is not enough for a family to learn what they can do better, but also the City, Schools and Practices of Faith organizations that support them need to learn how to better meet the family's needs. As an addendum to this conference these organizations are included. These are family support structures and they too need to learn their role as it applies to supporting the family in their journey. For this reason, we are providing for our Schools, two new ground-breaking initiatives. For Cities, a best practice round table discussion for Mayor's and Chief of Police to attend. For Churches and practices of Faith, a congregation level Addiction Counselor State Certification Orientation. For treatment centers and counseling groups, a job fair for staffing treatment centers and county, state agencies. Other selected special topic sessions are also included to the afternoon breakout learning sessions i.e. NARCAN demonstration, Suicide Prevention and more.

In the end the attendee will leave with a completed conference Study Guide that has now become their "Family Plan of Action" to take home, review and implement.

The City's will learn a better way to address incarceration divergence, the schools will learn how to build resiliency in our children and the Church's will be able to provide an addiction counselor in their faith community. This is transformation, this is empowerment.

The design of Strategy, Structure and Process of this conference is why we call this a "Transformational Conference" where all the groups are under one roof, for one purpose: to "STAND UP to STAND TOGETHER" in Empowering the Family in their journey.

Contact Families Impacted by Opioids: 440.385.7605 and we will guide you through how to set up your fund raiser conference in your local community.

EXAMPLE: BREAKOUT ROOMS (revenue source)

Room One (150 seats)

- 1:00 – 1:30pm Enabling vs. Disabling, issue #1, Robin Star - The Star Group
- 1:35 – 2:00pm Addiction Behavior, issue #2, St Vincent’s Rosary Hall
- 2:05 – 3:00pm Improbable Player (theater performance)
- 3:05 – 3:30pm Wealth Management in Substance Use Disorder, Merrill Lynch
- 3:35 – 4:00pm Suicide Prevention, Frontline Intervention Services

Room Two (150 seats)

- 1:00 – 1:30pm Care-Vention, issue #3, The LCADA Way
- 1:35 – 2:00pm The Police Intervention, issue #4 Safe Passages
- 2:05 – 3:00pm Mayor’s Best Practices Roundtable, Former Congressman Renacci
- 3:05 – 3:30pm Legal Court System, issue #6 Ms. Marie Lane Esq.
- 3:35 – 4:00pm Elite Family Coaching, Sovereign Journey, Mr. David Span

Room Three (150 seats)

- 1:00 – 1:30pm Treatment Centers, Issue # 7 Glenbeigh
- 1:35 – 2:00pm Community First Responders, Mayor Neugebauer, City of Green
- 2:05 – 2:30pm Successful Life Long Recovery, issue #10 PRS/CATS
- 2:35 – 3:00pm Bereavement, issue #11 Cornerstone of Hope
- 3:05 – 3:30pm Emergency Medical Services, issue # 5 Oakview BH
- 3:35 – 4:00pm County, State, Federal Agency’s, Issue # 8 Andrea Boxill

Room Four (50 seats)

- 1:00 - 1:30pm NARCAN Demo and QRT programs, Chief of Police Cuyahoga Falls
- 1:35 – 2:00pm Peer to Peer Programs, Thrive/Ascent
- 2:05 – 2:30pm DrugHelp.Care, Cleveland State University
- 2:35 – 3:00pm Cuyahoga County Health and Human Services
- 3:05 – 3:30pm Treatment Centers Issue # 7 Oriana House
- 3:35 – 4:00pm Faith & Spiritual Practices, issue # 12 Devi Gursahaney & Addiction Counselor State Certification Orientation, Joyce Patience

Issue # 9 presented in Morning Grand Session, Thomas Stuber, The LCADA Way

EXAMPLE: SPONSORS (revenue source)

- **Gold Sponsor**

\$2,500 includes Logo in all print media, social media channels and in Conference Workbook, no fee for using your in-room banner, main hallway Exhibit space included.

- **Silver Sponsor**

\$1,500 includes Logo in room sponsor poster, logo on our website, Conference Workbook, main hallway Exhibit space included.

- **Refreshment Station (TBD by volume)**

Coffee Break Morning

Afternoon Refreshments

- **Conference Workbook Advertising or Sponsor the Publication**

Full page \$1,000 Half Page \$500 This book becomes the families “plan of action” after the conference and will be published on amazon.com after the conference with your advertising included. Nationwide

- **FISH RADIO ADVERTISING**

Co-Marketing on FISH RADIO campaign, \$2,500 media set-up packet available to review.

- **Conference Bags**

\$0.00 Fee. You provided 500 bags with your logo and ours.

- **In-Room Banner**

\$300.00

- **Social Media Campaign \$100.00**

In the months leading up to the conference we can combine media and social media content, as a sponsor to this conference. We want families to know of your involvement to support them in their journey fighting against this epidemic.

CONCLUSION

We need to have a strategy, ours is one of many possible choices. We need to have a local structure. Ours is ready to start with those who are already serving their community. We need to have a process to deliver the education. Our has both Text, Video and Presenter with seminar content ready to use. We need to ensure access. Ours is On-Demand, On-Line 24/7. The next step is yours.

Our Slogan: Hope, Hugs and Family Love (*Give them Hope, Give them Hugs, Share in the Family's Love*).

Our Call to Action: Let's Get Started!

CONTACT US TO LEARN MORE.

Mr. Roy P. Poillon

Executive Director

Families Impacted by Opioids

O: 440.385.7605

M: 814.722.8946

FamiliesImpactedByOpioids@gmail.com

www.FamiliesImpactedByOpioids.com

NOTES:

Congratulations:

You have now completed the required learning to become a Certified Family Solution Finder Learning Centers Instructor. Contact us for any question and just know the good you are doing for these family's is exceedingly helpful. You are giving them hope for the future. We can send to you a completion certificate, just call us so we can register your name and contact information.

To purchase books: www.amazon.com search: Roy Poillon

All Registered Family Solution Finder Learning Centers receive a volume purchase price list of purchase of books.

We are available to answer your questions: *

Mr. Roy P. Poillon
Executive Director/Founder
Families Impacted by Opioids (nonprofit)
440.385.7605
Cleveland, Ohio

Email: Familiesimpactedbyopioids@gmail.com
Website: www.Familiesimpactedbyopioids.com

*Because of the importance concerning all matters reviewed in this program, we will not provide advice on medical, legal or financial matters. It is strongly encouraged that these subjects be reviewed by licensed professionals.