



### Special points of interest:

- Music, Essay, Creative Writing, and Art Contest Updates
- Community Impact Program
- Year-end Reporting
- Club Highlights

### Inside this issue:

Officer Reports	2
Chairman Reports	6
Club Highlights	13
Next Issue	9

# KANSAS CLUBWOMAN NEWS

OFFICIAL PUBLICATION OF THE GENERAL FEDERATION OF WOMEN'S CLUBS OF KANSAS

## From Jan's Chair...



**Jan Moore**  
GFWC of Kansas President  
2020–2022

The national news changes dramatically every day; I've been "glued" to the TV networks for weeks. Now, the pandemic has again taken hold of the country with a vengeance. My little family will not meet for Thanksgiving – there are too many "out of our bubble" issues. I've seen (on TV) that some families are holding virtual celebrations. That doesn't sound like much fun – maybe we just aren't supposed to have fun in 2020.

I've received Club yearbooks from half of our State's Clubs (thank you!). One Club yearbook shows their first meeting won't be until March 2021; my own Club did meet via Zoom but it wasn't easy. These are difficult times – please, everyone be very careful throughout the end of this year and well into 2021 in anticipation of a vaccine becoming available to all – and hopefully State convention in May.

Reading about your Club's activities tells me that you are paying close attention to "food insecurities" in your communities. Also, there have been generous donations to GFWC State for Southwest Indian Foundation's (SWIF) holiday food baskets and we hopefully

will have enough funds gathered up to buy one of the combination stoves for our poorest Native Americans. The news tells us that they have been hit especially hard with the virus and most do not have medical facilities nearby.

Why does it mean so much to me that you are working with your local food banks and paying attention to what we now call "food and shelter insecurities"? Because in my pre-teen and teen years I also had these insecurities (although we didn't know to call it that). Fortunately, my Mother was adept at making exactly the right amount of food for our family of five. She also kept a kitchen garden and we "put food by" to supplement what she could buy. I'd be willing to bet that I'm not the only one in our GFWC family who knows what these insecurities felt like. They made a lasting impression on me.

This GFWC of Kansas Clubwoman Newsletter is full of wonderful information. The Newsletter is one of the best ways we have of staying connected with each other!

Stay safe, wear your masks and socially distance – especially if you do have Thanksgiving & Holiday gatherings (follow the guidelines carefully).

*Jan Moore*





*"We have not inherited the earth from our fathers. We are borrowing it from our children and grandchildren".*

*(Native American Saying)*

## President-Elect

Dear GFWC of Kansas Clubwomen,

Merry Christmas and Happy Holidays.

The following are words that I would like every clubwoman to read and reread.

**"In a world full of limited resources, there is one that is truly unlimited- human kindness. Once unleashed, simple acts of kindness generate incredible outcomes for those in need. A safe place, an ear to listen, and a plan to grow. Simple acts with profound impact."**

The former words are not my words, I have borrowed them. Meditate on them, Pray on them, Think on them. As clubwoman and clubs each of us already practice acts of kindness by completing all the amazing projects during our club year. Projects do not need to be big and glamorous; the smallest project can also be the easiest and still have an amazing impact. Share what you are doing with others either via Facebook (GFWC of Kansas has a Facebook page), your local newspaper, and/or the Kansas Clubwoman newsletter. Lets learn from each other by sharing. As you begin to share what your club does in your community I guarantee that you will be asked by a non-member to "Please explain more about your club?", "How can I join your club?", "Can I help you?". Perhaps you might get a

new member for your club, and that would be extremely exciting. Note: Please see my article in this issue of the Kansas Clubwoman newsletter about what to do now that your have a new clubwoman.

As we near the end of 2020 I ask all clubwoman to think of others. It has been an especially tough year for almost all. Please reach out to your fellow clubwoman, stay connected with each and every one of them. Then think about connecting with your community. Consider writing a Christmas card or Happy New Year card to a front-line worker (or emergency department) at your local hospital, they are all under a lot of stress at the moment. Also do not forget the residents at your local elderly care facility. I am sure that someone there would appreciate an unexpected card or handwritten note.

Stay safe and healthy and Happy New Year to you and your families.

*We must GROW to SURVIVE and THRIVE.*

*Janine Eilert  
GFWC of Kansas President-Elect  
and Membership Chairman  
[kiwieilert@sbcglobal.net](mailto:kiwieilert@sbcglobal.net)  
(316) 250-0432*

## Vice President

Club Statistical Forms, Summary of Club Activities, and Club Submission for a Creativity Awards (pgs. 10-13 in the State Handbook) are due to the State President and State Vice-President by February 1, 2020. Begin to encourage your members to think about their volunteer hour report now.

As you begin to prepare your club's statistical form the first line of statistics is for GFWC Signature Projects. Projects under the following eight areas would be reported here: **Intimate Partner Violence, Child Abuse, Teen Dating Violence, Campus Sexual Assault, Elder Abuse, Violence Against Native American Women, Military Sexual Assault, and Human Trafficking for Sexual Purposes.** Note if the Signature Project is support of the affiliate organization **Prevent Child Abuse America** it goes in line 1 on Part 2. The second line item deals with Junior Projects, which to my knowledge is not relevant to our state clubs.

As you start the decision as to where a project belongs you will need to decide if it supports one of the affiliate organizations. If the project does, then you report it on Part 2, according to the Community Service Program (CPS), it best fits under. As you may notice Canine Companions for Independence is an affiliate organization recognized in four different areas. The following gives some examples as to how one might determine which CPS is best. If a club purchases bolts of fabric for Canine Companions to sew vests for dogs or stuffed puppies it would go under Arts and Culture CPS. However, if your club raises funds to help place a dog with a veteran it would be under the Civic Engagement and Outreach CPS. If the project is presenting education about the Canine Companions it would be in the Education and Libraries CPS. Supporting the "Give A Dog A Job" program places it under Health and Wellness CPS.

**"The GFWC Arts & Culture CSP** encourages members to promote and support art and cultural programs in their clubs and communities, and to expand understanding on every level, from local and regional to national and international. Our goal is to create projects that include crafts, dance, drama, food, music, and other manifestations of art and culture that develop skills, awareness, and appreciation." **Affiliate organizations** in Arts and Culture that may be reported on part 2 include: Canine Companions for Independence; Heifer International; March of Dimes; Operation Smile; PCAA (Prevent Child Abuse America); St. Jude Children's Re-

search Hospital, and UNICEF USA.

**"Civic Engagement and Outreach CSP** highlight and encourage Citizenship; Crime Prevention, Safety, and Disaster Preparedness; the Needy, Hungry, and Homeless; and Our Military Personnel and Veterans. Beyond these suggestions, look within your own community and to the wider world for ways to make a positive impact." **Affiliate organizations** in Civic Engagement and Outreach that may be reported on part 2 include: Canine Companions for Independence; Heifer International; HOBY; March of Dimes; Operation Smile; PCAA; St. Jude Children's Research Hospital; United Nations Foundation Shot @ Life Campaign, and UNICEF USA.

**"Education and Libraries CSP** are designed to foster schools, as well as other educational institutions and opportunities, and to promote libraries, literacy and the love of a good book." **Affiliate organizations** in Education and Libraries Outreach that may be reported on part 2 include: Canine Companions for Independence; Heifer International; HOBY; Operation Smile; PCAA; St. Jude Children's Research Hospital; United Nations Foundation Shot @ Life Campaign, and UNICEF USA.

**"Environment CSP** encourages us to become stewards of the earth by working to preserve the world's resources, protect wildlife and domesticated animals, live sustainably, and beautify our communities and enjoy nature." **Affiliate organizations** in Environment that may be reported on part 2 include: Heifer International and UNICEF USA.

**Health and Wellness CPS** addresses three key components: nutrition, disease prevention, and physical and emotional care. **Affiliate organizations** in Health and Wellness that may be reported on part 2 include: Canine Companions for Independence; Heifer International; March of Dimes; Operation Smile; PCAA; St. Jude Children's Research Hospital; United Nations Foundation Shot @ Life Campaign, and UNICEF USA.

If you need assistance, I may be reached by email at [mv4thomas@hotmail.com](mailto:mv4thomas@hotmail.com), home phone 785-874-4303 or cell phone 785-871-7853 either by voicemail or text. Hopefully together we will be able to resolve any reporting problems.

Margaret Thomas  
GFWC of Kansas  
Vice-president



*"Christmas, my child, is love in action. Every time we love, every time we give, it's Christmas."*  
Dale Evans Rogers



*"Christmas Eve was a night of song that wrapped itself about you like a shawl. But it warmed more than your body. It warmed your heart... filled it, too, with melody that would last forever."*

*Bess Streeter Aldrich:*

## Treasurer

I want to give you a mid-year status report on the balances and activity in our special funds:

- Music Fund: Balance of \$3,006.59; Donations of \$50.00 from Clubs
- Scholarship Fund: Balance of \$3,161.06; Donations of \$37.50 from Clubs
- Veterans Fund: Balance of \$125.29; Donations of \$125.29 from Clubs
- Art Fund: Balance of \$2,485.58; Donations of \$125.29 from Clubs
- Citizenship Fund: Balance of \$2,071.21; Donations of \$85.00 from Clubs

Donations are down quite a bit compared to this time in prior years, but

## Secretary

It will soon be Holiday time and then, we will find ourselves at the end of 2020! Members, now is the time to start summarizing your volunteer hours and donations, cash and in-kind, that you have given this year. It will soon be time for your club to submit year-end reports to State President Jan Moore and State Vice President Margaret Thomas. These reports, on pages 10 -12 of the State Handbook, are due by February 1, 2021.

I would like to thank all of the Kansas GFWC clubs that have submitted their updated Membership Rosters and club dues to me for GFWC of Kansas and GFWC International. I have received reports and dues for 27 active clubs, a total of 382 members!

Sadly we have two Kansas clubs that have disbanded and one club has unaffiliated with GFWC in 2020.

Congratulations to Ad Astra Club for an overall gain of one new member, Hestia Study Club for two new members, Liberal Woman's Club for one additional new member, and one new member was

I think that is understandable because we can't really compare 2020 to other years! We have had quite a few donations to one of President Jan's special State Projects, the Southwest Indian Foundation (SWIF). I think Jan plans to talk about this project elsewhere in this newsletter, so I won't go into details, but so far we have received \$72.20 for two Christmas food baskets, and \$477.80 toward a combination wood or coal stove that costs \$539.00

Thank you, clubs and ladies, for your donations to our special funds and projects!

*Carol Hanson  
GFWC of KS Treasurer*

added to the Kansas Rainbow Club. Well done, GFWC clubs! Please keep reaching out to friends and neighbors, inviting them to visit your club. It may be just what they need!

Club officers, when you gain new member(s), please complete the form on page 8 of the State Handbook and send it to me with the \$25 dues for that member. Also, if you have changes in address, phone number, and/or email address for an **existing** member, please submit that info to me as soon as possible. I will send it on to Linda Loyd, the "GFWC Clubwoman Newsletter" Editor, as well as updating our Club Membership Rosters. This will allow our members to receive the Newsletter in a timely manner.

Wishing you a special, happy holiday season!

*Linda Krebs  
Secretary  
GFWC of Kansas*

## Library Board

When the State Library of Kansas Board held its September meeting, the directors had the opportunity to hear from each department on the long list of services that it provides to the people of the Sunflower State. It is an impressive list and includes one special activity that shines a literary spotlight on our fair state.

The annual Kansas Notable Books list is a project of the state library's Kansas Center for the Book. It recognizes fifteen outstanding titles either written by Kansans or about a Kansas related topic. The list is developed by a committee of academics, librarians, authors of previous notable books, and the state librarian who actually makes the selections for the final list.

Per the state library web site, the first list was announced in 2006 and more than two hundred books and authors have since been recognized for their contribution to Kansas' literary heritage. This includes those on the 2020 list:

- Birds, Bones, and Beetles: The Improbable Career and Remarkable Legacy of University of Kansas Naturalist Charles D. Bunker by Charles H. Warner
- A Constellation of Roses by Miranda Asebedo
- Crumbled! (The Misadventures of Nobbins Swill) by Lisa Harkrader
- Follow Me Down to Nicodemus Town by A. LaFaye
- Headwinds: A Memoir by Edna Bell-Pearson
- The Healer's Daughter: A Novel by Charlotte Hinger
- How to Be a Family: The Year I

Dragged My Kids Around the World to Find a New Way to Be Together by Dan Kois

- Journey to a Promised Land: A Story of the Exodusters (I Am America) by Allison Lassieur
- Kansas City Chiefs Legends: The Greatest Coaches, Players and Front Office Execs in Chiefs History by Jeff Deters
- A Perfect Silhouette by Judith Miller
- Petroglyphs of the Kansas Smoky Hills by Rex C. Buchanan
- The Reckless Oath We Made: A Novel by Bryn Greenwood
- Steel Tide: A Seafire Novel by Natalie C. Parker
- The Topeka School: A Novel by Ben Lerner
- What Color Is Night? by Grant Snider

Further, the state library also offers a noncompetitive grant to local libraries to help them purchase a copy of each of the notable titles to add to their collections. With it, these by-and-about Kansas works can be made available to patrons across the state, helping to fulfill our libraries' common commitment to promoting literacy, lifelong learning and access to materials.

*Susan Moyer,  
GFWC KS Library Board  
Appointee*

*"The rooms were very  
still while the pages  
were softly turned  
and the winter  
sunshine crept in to  
touch the bright  
heads and serious  
faces with a  
Christmas greeting."  
Louisa May Alcott:*





*"The time draws near  
the birth of Christ: The  
moon is hid; the night is  
still; the Christmas bells  
from hill to hill answer  
each other in the mist."  
Alfred, Lord Tennyson*

## **GFWC of Kansas Citizenship Essay Scholarship Contest**

Have you encouraged students to enter the 2021 essay contest? The essay topic and instructions were in the September, 2020 Newsletter on page 7. The topic is: "What happened and is happening in American history that had or will have the most effect on your life now and in the future?" Additional information was included at that time.

The date given as a local club deadline was January 1, 2021 as listed in the State Handbook, page 26. However, you may set your own date for the students.

Please, have all essays to the Kan-

sas Citizenship Essay Contest Chairman by February 1, 2021. Remind students to make the cover sheet as listed in #10 in the state handbook and that the essay should have no identification listed. If you have questions, the best way to reach me is by email.

*Karen DeCou,  
GFWC of KS Citizenship Essay Contest  
Chairman  
[KL63decou@cox.net](mailto:KL63decou@cox.net)  
Cell phone: (620)6648753*

## **2021 GFWC Music Auditions Community Impact Program**

It is with much regret I inform you MUSIC AUDITIONS will not be held this Club Year. After much discussion with President Jan Moore and Music Coordinator Rose Ditto, we all felt it was in the best interest of students and club members to cancel Auditions scheduled for March 6, 2021.

The status of COVID 19 is so unpredictable. Many clubs are not meeting, many schools are using online schooling, and with the planning needed for this event it makes for a very difficult situation. We will plan for March 2022 and perhaps we'll be able to offer additional scholarships at that time. Please support music students and their events, and please inform teachers of the cancellation. This was a very difficult decision.

*Florence Whitebread, Chair  
GFWC State Music Auditions*

Communities change and so do clubs. Has your community or clubs needs changed? GFWC's "Community Impact Program Award" is given to a GFWC club who has addressed a problem in their community during the 2021 year. The project can be accomplished during the year January 2021 to December 2021. This award began as "Build a Better Community Contest" and was formerly known as "Community Improvement Program Award".

So many different community problems have risen this past year. GFWC of Kansas Clubs can make a major impact with Food pantries, community gardens, distributing nutritious brown bag meals, and so much more. Check with the schools, churches, Chamber of Commerce, police department, and city government for possible needs in the community. Make a plan, and put it into action. The deadline for entry to the state for judging is March 1, 2022. Monetary awards are available at the GFWC level. You can "IMPACT One Community at a Time"

*Shirley A Ferley  
GFWC of Kansas  
Community Impact Program Chairman*

## Clubwoman Health

### Highest Incidence Women's Health Issues

#### Heart Disease

In the United States, heart disease causes one in every four deaths among women. However, only slightly over half of women realize that heart disease is the top health condition threatening them. High blood pressure, high cholesterol, or smoking are factors that contribute to heart disease.

#### Breast Cancer

Breast cancer is the most aggressive cancer affecting the global female population. It affects more women in developed nations because they have longer life spans.

#### Ovarian and Cervical Cancer

Many women are not aware of the differences between ovarian and cervical cancer. Cervical cancer originates in the lower uterus, while ovarian cancer starts in the fallopian tubes. While both conditions can cause similar pain; ovarian cancer presents more vague symptoms. Pap smears detect cervical but not ovarian cancer.

#### Gynecological Health

It is important for a woman to continue getting recommended checks on gynecological health throughout life. Any concerning symptoms should be checked promptly.

#### Autoimmune Diseases

Autoimmune disease occurs when body cells that eliminate threats, such as viruses, attack healthy cells. It is unknown why the condition affects mostly

women. Many distinct autoimmune diseases exist and, most share symptoms such as: exhaustion, mild fever, pain skin irritation, vertigo.

#### Osteoporosis

Osteoporosis weakens bones, allowing them to break easily. Several factors such as age, alcohol consumption, certain prescriptions, genetics, lack of exercise, low body mass, smoking and steroid use contribute to osteoporosis. To detect the condition, care providers measure bone density using an X-ray or ultrasound diagnostic. While no cure exists for osteoporosis, care providers can prescribe treatment to impede illness progression, which might include dietary supplements, healthy lifestyle choices, or prescription medication.

#### Depression and Anxiety

Natural hormonal fluctuations can lead to depression or anxiety. Women can lower the risk for cancers and other common illnesses with healthy habits and regular visits to the doctor. Keeping a health diary or charting symptoms to share at a doctor's appointment is a way to make your visit more purposeful.

*Mary Shoemaker  
Health and Wellness Chairman*



*"It is Christmas  
every time you let  
God love others  
through you... yes,  
it is Christmas every  
time you smile at  
your brother and  
offer him your  
hand."*

**Mother Teresa:**



*"Christmas is the day  
that holds all time  
together."*

*Alexander Smith:*

## Arts and Creative Crafts

Even though the COVID19 situation is not improving, we are hoping that it will improve enough by spring to have our student art competition at our state convention. Certainly our students and teachers are not having a normal school year, but please let them to know that the opportunity to show their art at convention will be there as usual if it is possible. Their art will be welcome.

Don't forget that there is a Clubwoman category for art, crafts, and photography. The rules and entry forms are in the state handbook pages 19 -

## Creative Writing Contest

I don't know how this virus is going to effect this contest. You will have to share this information with your schools as the situation dictates.

Now is the time to be thinking of entering the Creative Writing Contest. Remember this is for all school age children, home schooled ones included, as well as all club women. All entries are to be sent to me by March 1, 2021. There as a monetary award for each category of poetry and short story for youth and adults. First place is \$15, second place \$10, and third place \$5. The first place in each category will be sent to international.

Be sure all the correct information is included in the upper right hand corner of each page. This includes name, email address, mailing address, phone number, author's GFWC of Kansas club, state federa-

25. This is a perfect opportunity to show off the items that you have been creating this past year. Please consider entering.

*Linda Loyd and Char Grelk,  
Co-Chairs  
Art and Creative Crafts*

tion, category, and title of manuscript. You should consult the handbook on pages 33-34 for further information.

Be sure to include the waver, which can be found on the GFWC website.

I look forward to hearing from you.

Elizabeth Hemberger  
Creative Writing Chairman  
1220 W 20th Ave N  
Argonia, Kansas 67004-8014  
rgea@havilandtelco.com  
620-435-6416



## Conservation

We are aware that the Corona-virus seems to be getting worse and Not letting up. I live in Johnson County where there are so many Covid cases each day. I hope that YOU take these precautions in your community. I miss seeing the Club women of GFWC Kansas and hope that by April we can meet for our Spring Convention again. Be sure to dispose of your gloves, masks, and disinfection wipes properly. We ALL have to work together to conquer this and make it through.

**Wear a mask.**

**Save lives.**

Wear a face cover

Wash your hands

Keep a safe distance

The best way to prevent illness is to avoid being exposed to this virus. Learn how COVID-19 spreads and practice these actions to help prevent the spread of this illness.

To help prevent the spread of COVID-19, everyone should:

- Clean your hands often, either with soap and water for 20 seconds or a hand sanitizer that contains at least 60% alcohol.
- Avoid close contact with people who are sick.
- Put distance between yourself and other people (at least 6 feet).
- Cover your mouth and nose with a mask when around others.
- Cover your cough or sneeze with a tissue, then throw the tissue in the trash.
- Clean and disinfect frequently touched objects and surfaces daily.
- CDC recommends that people wear masks in public settings and when around people outside of their household, especially when other social distancing measures are difficult to maintain.
- Masks may help prevent people who have COVID-19 from spreading the virus to others.

*Juanita Rothaus*

*State Conservation Chairman*

## Next Issue

News items for the March issue of the Kansas Clubwoman are due **February 20, 2021**. Please feel free to forward your articles to me whenever you have them ready. No need to wait. I maintain a working copy of the next issue and will insert your article when I receive it. And, I will always send a reply to confirm that I have it.

*Linda Loyd, Editor*

*lloyd05@embarqmail.com*

*913-856-8602*



*"Christmas is most truly  
Christmas when we  
celebrate it by giving the  
light of love to those  
who need it most."*

***Ruth Carter Stapleton:***



*"The joy of brightening other lives, bearing each others' burdens, easing other's loads and supplanting empty hearts and lives with generous gifts becomes for us the magic of Christmas."*

**W. C. Jones**

## By-laws and Resolutions

The time has come for us to give thanks for all who helped us get through this COVID-19, so far.

To thank our friends and family for their care and support.

To thank each and every one of you, the club members who are carrying on the work of Federation in your communities .

May you have a wonderful Thanksgiving !

I have had clubs contact me for the by-laws revisions to help during this time. As I have said, IF you have standing rules, use them until you can do your by-laws. That does not mean to keep it there. When you can meet and have your committee to work on them and have a club vote. Then, remove from the standing rules. Questions, call me.

Legislation Update....Federal Appropriations, Domestic violence shelters, rape, crisis centers, and many Fed-

## Education & President Marion

International President Marion has an Education Challenge Project: support STEM programs and activities for special needs students. Suggested projects include organizing a STEM day camp, workshop, or unique activity for special needs students; supplying special needs teachers with STEM lesson plans, ideas, and/or supplies; or donating books about STEM careers to special needs classrooms.

Books that are good for all ages include *The Most Magnificent Thing* by Ashley Spires and *Rosie Revere, Engineer, Ada Twist, Scientist*, and *Iggy Peck, Architect* by Andrea Beaty. There are additional titles about Rosie, Ada, and Iggy.

STEM materials can be found at

erally funded community programs are operating under an FY 2021 Continuing Resolution which provides reduced funding until Congress approves a permanent budget. Returning to Washington after election, the House and Senate Appropriations Committees are now negotiating to resolve their differences before the December 11 deadline. The federal fiscal year began October 1. It is doubtful if a separate COVID-19 or stimulus bill will be enacted before the end of the year, but additional funding could be added to the FY 2021 omnibus appropriations bill.

Information on this was provided by GFWC from the Legislative Corner.

Your voice could give FY 2021 the attention to this need.

*Delva Powers*  
*State Chair for By-Laws & Resolutions*

www.lakeshorelearning.com; once at the website search "STEM". Examples of learning activities include fairy tale or folk tale problem solving stem kits, design and play stem kits (car, plane, boat), and real world stem challenge kits (keep the rain out, stay afloat, parachute to safety). Most kits are designed for table-top use, but some are "life-size".

If STEM is new to you, it is a program of study combining science, technology, English, and math. When art is also incorporated in the study it is referred to as STEAM.

*Kate Field*  
*State Education Chairman*

## What Color is Your School?

Dateline 2020 Nov 20. Whenever and however your school district started this year, soon after school began, with numbers starting to rise, school officials and health professionals outlined what is known as “gating criteria”.

The four zones (green, yellow, orange, red) are determined by number of new cases reported and the positive test rate; these figures could be averaged over a 14-day period to determine on Friday the status of school attendance the following week. Also governed by the zone are school activities, spectators at games, and facility use. To keep positive test rates down, those who are “healthy” are encouraged to get tested.

One news report mentioned a school that has been on-site all year and another that has been only remote. I’ll relate some of what is happening in Reno County. It is probably similar to other areas.

Hutchinson, Buhler, and Nickerson-South Hutchinson districts abut within Hutchinson city limits and cover an area about 20 by 12 miles. Each “does its own thing”, adjusting to stay open in red.

Hutchinson started the last week of August with all students on-site unless parents opted for students to study remotely. Within two weeks some students started returning to class, not liking remote learning. October saw a hybrid model with all students attending Mon/Wed or Tue/Thu with all remote on Friday. Full remote learning happened the last two weeks of October. November saw students back in school with a modified hybrid model. Originally students were divided A-L and M-Z; now division was adjusted to keep class sizes at ten; and groups alternate Friday attendance.

Students began by going to the music room or gym. With modified hybrid attendance, these teachers go to the classroom. Breakfast and lunch have been in the classroom all year.

Buhler started after Labor Day with all students in attendance if not electing remote. Toward the end of September, one grade school had five students in multiple grades positive so that school was closed for ten days. Come October, middle and high school classes went hybrid. Elementary students continue to attend all week, with entire classes staying at home for two weeks as conditions warrant.

Nickerson-South Hutchinson started after

Labor Day with in-person learning. Currently the middle and high schools are all remote while elementary schools are open. However, one closed this week until after Thanksgiving due to a shortage of teachers, either sick or quarantining.

Buhler and Nickerson exchanged two days or turned potential snow days to remote learning days to allow a full two-week winter break in December.

Haven district now has middle and high school students in remote study. Elementary schools are split within the school building and another site in order to maintain low class sizes.

Teachers are struggling. Hutchinson started with dedicated remote teachers for the most part. A few middle/high school teachers teach from home, having a monitor in the classroom. But with hybrid classes all teachers are preparing work for class and remote. Quarantined teachers are teaching from home as they can using Zoom or Google Meet. Substitute teachers are few this year.

Parents struggle with constant changes, extra day care needs, and stress on children. To help Hutchinson Boys & Girls Club provides supervision for students on remote days.

Students struggle learning remotely; technology doesn’t always work, they don’t understand the lesson, or there is no support to do the lessons. Some students are doing better as more individual attention in class is possible with smaller class sizes.

The overriding goal of all is to provide the best education for all students, longing for “normal”.

And, as if a pandemic is not enough a foe to engage, late October saw Mother Nature throw snow and ice at us causing earlier-than-normal weather closings. As 2020 draws to a close in (can it only be) forty-one days, just remember this: tomorrow is another day.

*Kate Field*  
State Education Chairman



*“My idea of  
Christmas, whether  
old-fashioned or  
modern, is very  
simple: loving others.  
Come to think of it,  
why do we have to  
wait for Christmas to  
do that?”  
Bob Hope:*



*Don't let the past  
steal your  
present. This is  
the message of  
Christmas: We  
are never alone.*

*Taylor Caldwell*

## Message from GFWC of Kansas Parliamentary Advisor

I was asked by our State President Jan Moore to submit a little information that is useful in your workings of your club meetings. This is an item that no matter what is going on in our National News it will apply to our organization.

QUESTION? Can We Support Political Candidates?

No, GFWC is a 501(c)(3) non-profit organization and cannot endorse candidates nor can a State Federation or local club which is also a 501(c)(3) non-profit.

This does not infringe upon

your individual right to participate in the political process and to support the candidate of your choice. You just can't indicate you represent your Woman's Club or GFWC. Nothing prohibits you and your club from registering people to vote, educating clubwomen about important issues, and working to get out the vote.

*Parliamentary Advisor*

*Prudence Fager*

*8833 MJ Drive*

*Manhattan, Kansas*

*Email: prudencefager@aol.com*

## New Members

Fantastic your club has recruited a new club member. Now what?

Your club president/secretary/treasurer needs to kindly complete the form on page 8 of the 2020-2022 state handbook and remit \$25 in dues to our State Secretary Linda Krebs. Please note that GFWC of Kansas only keeps \$10 of that, the remaining \$15 is forwarded to GFWC International. Our State Secretary then informs all the GFWC of Kansas Executive committee and Linda Loyd (Kansas Clubwoman Editor) know of your new member. Linda Loyd then adds your new members name to the mailing list of Kansas Clubwoman newsletter, what you are reading at this very moment. I in turn send out a card to your new member welcoming them to GFWC of Kansas and the sisterhood of being a part of an international women's group. I also keep a running tally of what clubs have added new members so that clubs can

be part of the GFWC of Kansas Membership challenge (see last months Kansas Clubwoman newsletter for details) and also the Mae Wenger Club Membership Award (club that has the greatest percentage of increase in membership during a 12month period). Your job as a clubwoman is to keep your new member engaged in your club, please make them feel special. Perhaps assign them a mentor/friend who can let them know all about GFWC and its history and your club's history. If they are especially motivated let them jump into an awarding project. The most important thing is to make sure they feel appreciated and connected to your club and fellow clubwoman.

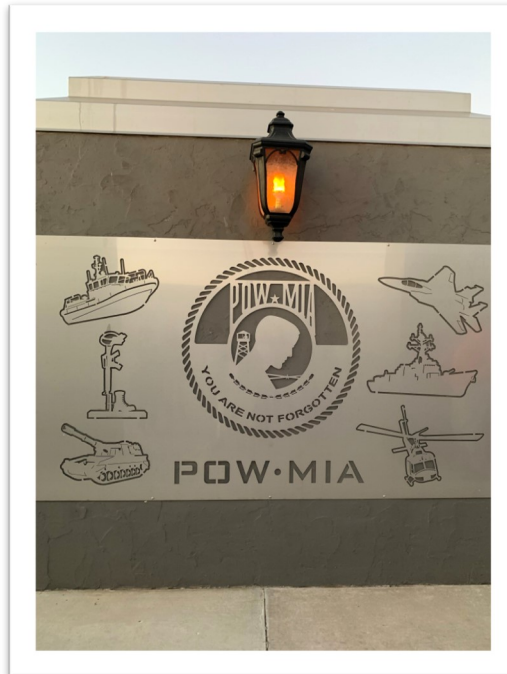
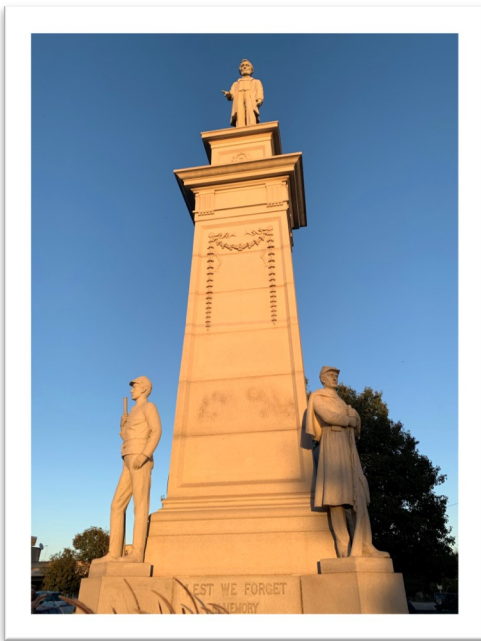
*Janine Eilert*



## GFWC Questers

The GFWC Questers met in September in a member's garage to allow for distancing. Our program was a celebration of forty years of club work in the Hutchinson area. The October meeting was a tour of the Veteran's memorials in Hutchinson and South Hutchinson. Followed by the business meeting at a park nearby. I sent the pictures separately. If you need more information, let me know.

Karen DeCou, President



*“God never gives someone a gift they are not capable of receiving. If he gives us the gift of Christmas, it is because we all have the ability to understand and receive it.*

*Pope Francis*





*“For it is in  
giving that we  
receive.”*

*Francis of Assisi*

## **GFWC Athena Club of Gardner**

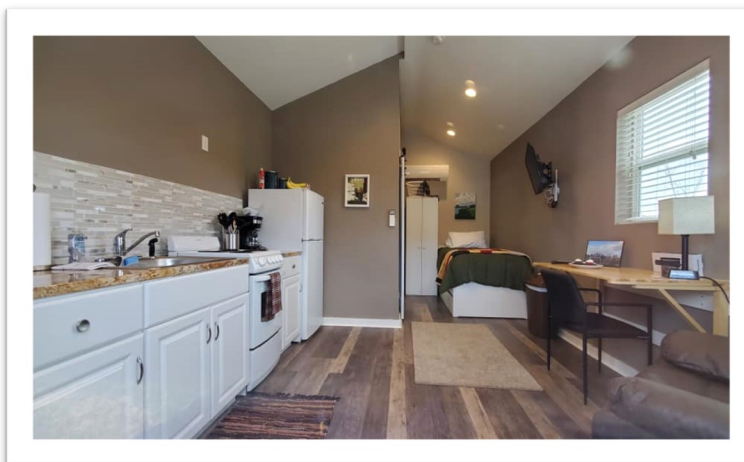
The GFWC Athena Club of Gardner took a tour of the Veteran’s Community Project on November 12, 2020. The community project is a non-profit corporation founded by five combat veterans who were frustrated by the rampant homelessness throughout the Veteran Community.

There are 49 “Tiny homes” that are located on Troost Avenue in Kansas City, Missouri. These homes are for men and women and even families. We were able to go inside one of these homes. We had seven people that attended the tour. It was very interesting and they offer many different services there. We learned that there are also “Tiny homes” in Colorado and also St. Louis. Our Club donated many goods to help them out. We donated toothbrushes, toothpaste, and many personal care items.

The GFWC Athena club is 98 years “young” and always has supported our Veteran’s.

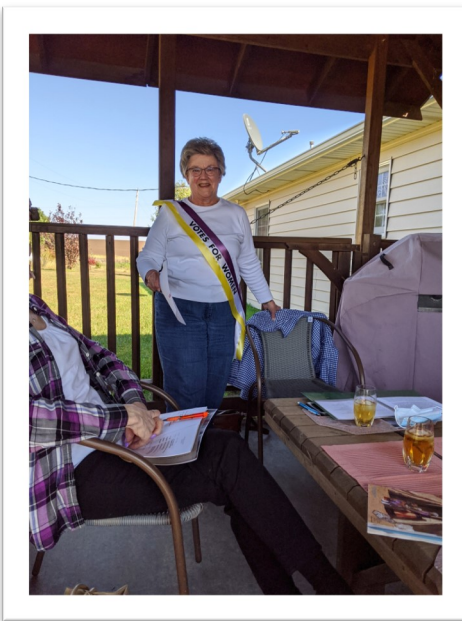
*Juanita Rothaus*

*(Photos are from  
[www.veteranscommunityproject.org](http://www.veteranscommunityproject.org))*



## GFWC Flint Hills Club of Manhattan

On September 14, 1867, Susan B. Anthony visited Manhattan with Elizabeth Cady Stanton. Anthony addressed a small audience in Gove's Hall on Poyntz Avenue regarding the female suffrage proposition. In attendance were 45 men, 12 women, and a few younger boys. In October of 2020, Anthony again visited Manhattan, and addressed a small audience of six women of the GFWC Flint Hills Club. Well . . . not exactly, but Carol Hanson did present a program on Women's Suffrage to the group in recognition of the 100-year anniversary of the 19<sup>th</sup> Amendment. It was interesting to learn about this movement and the women behind it, and knowing that Anthony and Stanton had made their way to Manhattan, not once, but twice, in 1857 and 1867, made it more personal. Forward Into Light! Votes for Women!



Carol Hanson promotes Vote for Women in honor of Susan B. Anthony



L-R: Fran Zerby, Carol Hanson, Ruth Linville, Prudence Fager, Beverly Randall. President Janice May is taking the picture.

## Ladies ' Reading Club of Junction City

The Ladies' Reading Club of Junction City put their sewing talents to use by making masks for an elementary school. 100 masks were delivered prior to the opening of class in September.

We were able to hold our annual pecan sale. Our very efficient committee ordered, packaged and distributed the bags of pecans and maintained social distance requirements.

The Greater Geary Community Foundation held a match day in mid-October and most donations garnered a 50% match of funds. The generosity of our women and members of the community make it possible to fund scholarships, community projects and maintain our clubhouse. These events show how a dedicated group of women, unable to meet as usual, devise the means to accomplish much.

*Helen Kovak, President*



*"Christmas is  
doing a little  
something extra  
for someone."*

*Charles M. Schulz*





*"I will honor  
Christmas in my  
heart, and try to  
keep it all the year."  
- Charles Dickens*

## GFWC Classics Lawrence

As this article goes to press, the public hasn't seen the 2020 Classics Festival of Tree entry that will be showcased November 30-December 4<sup>th</sup> at Liberty Hall in Lawrence. **So please keep our tree theme (YULE TIED) under wraps!**

Being in a world pandemic has changed how the Lawrence Festival of Trees event is being handled this year, but one thing's for sure; the show is going on. For the past 29 years, The Children's Shelter has been the recipient of the auction proceeds where about 60 trees and 25 wreaths are auctioned to the highest bidder. <https://www.theshelterinc.org/festival-of-trees>.

The Classics are proud to have designed, procured supplies, decorated and will set-up a tree for the 6th year in a row on November 28<sup>th</sup>. This Club activity and event gives our members and Boosters a chance to showcase their talents and finish decorating a tree and tree skirt. This year, our members have met remotely so this has limited our in-person group participation; however, everyone helped contribute neck ties or other supplies. It can be said that a few closets were cleaned out for this year's tree.

Past tree themes have been: "Children are the Keys to Our Future", "Tis the Sesame Street Season", "Amber Waves", "Cute as A Button" and "Bluebird Shelters." To date, GFWC Classics Lawrence has contributed trees that have yielded ~\$4000 at the auctions. The Children's Shelter provides transitional and emergency housing and services to local children in need.



We are honored to support this vital community organization that provides shelter to our vulnerable children. We will culminate this collaborative Club activity with a scheduled viewing on December 3<sup>rd</sup>.

With a goal to receive 2000 blankets/quilts by the end of August, GFWC Classics members: Kris Bailey, Martha Silks, Margaret Barnes, Susan Andersen, Joan Toot, Roberta Renz, and Brenda Rezac made and contributed 5 quilts

for the Soldiers' Angels project. This project serves wounded and deployed military members [www.soldiersangels.org](http://www.soldiersangels.org).



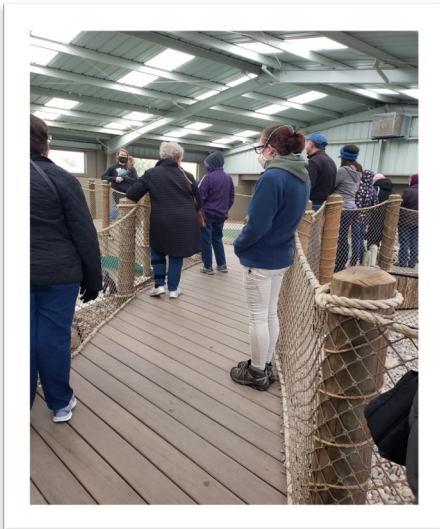
O'Connell Youth Ranch Back to School Book Bags



GFWC Classics has supported the O'Connell Youth Ranch for many years with food and clothing donations along with new book bags for each boy at the start of each new school year in August. 24 bags were presented to Gina Meier-Hummel, Executive Director (far left) by Martha Silks, Brenda Rezac and Kris Bailey. Despite the boys enrolled in on-line learning this year, book-bags are essential for going back and forth between rooms at their respective houses. [www.oconnellyouthranch.com](http://www.oconnellyouthranch.com).

## Goddard Woman's Club

The Goddard Woman's Club went on an Educational Tour to Tanganyika Wildlife Park, in Goddard. They were joined by GFWC Kansas Secretary Linda Krebs and her husband, all the way from Wamego, and four guests from the Hutchinson Questers Club. A total of 17 were in the group which started with a guided tour that shared very interesting information about three of the different animals there – the Colobus monkeys, the kangaroos, and the African penguins. It was fascinating to learn that the penguins recognize their handlers and will respond to being called individually by them. After a brief meeting and refreshments in the

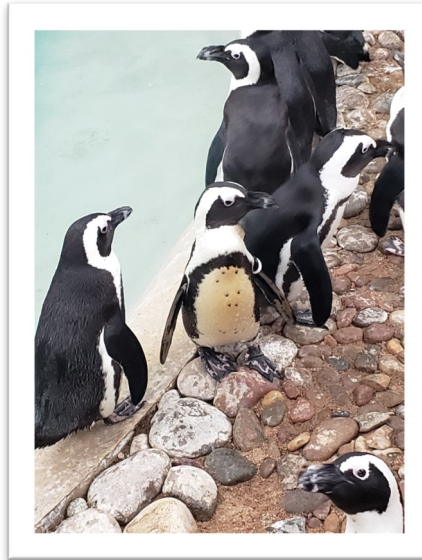


outdoor pavilion, everyone was free to wander around the park. We all wore our masks and kept our distance on a cloudy,



chilly day but still felt the fellowship of being together for a fun outing!

Our November meeting was via Zoom due to the terrible spread of the



Coronavirus. Three of our HOBY students 'Zoomed' in with us for a time and two others wrote letters to us. We were happy to learn that despite a shortened, virtual experience, the students still seemed to get a lot of value from the experience. We are hopeful that a vaccine will allow an in-person experience next summer!

We have two Christmas projects in the works. The first we started last year. We adopt two residents of one of our care homes that don't have family support. We get their wish lists and get them whatever they need/want. Club members pick what they would like to get and buy it. We can't have a wrapping party like last year so we will each wrap whatever we get and give it to our club Secretary, Mary Pat Patrick, who is coordinating this project. She will deliver all the gifts at once. We are also writing personalized Christmas cards to all of the residents at both of our senior care facilities. First names have been provided to volunteers.

*Lisa Stoller  
Club President*



*"Peace on earth will  
come to stay, when  
we live Christmas  
every day."*

*- Helen Steiner*

*Rice*





*"The only real blind person at Christmas-time is he who has not Christmas in his heart."*

*-Helen Keller*

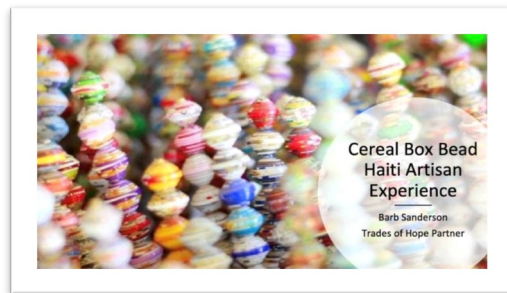
## **GFWC AD ASTRA**

**GFWC AD ASTRA in Wamego, Kansas is excited to announce the addition of 4 new members to our roster this fall.**

Our year kicked off meeting at the Wamego City Park in **September**. Plans for the year were discussed as well as the challenges that Covid 19 could bring. It was great to see everyone after a summer of isolation.

Guests from Wamego Study Club and Portia Clubs were invited to the **October** meeting.

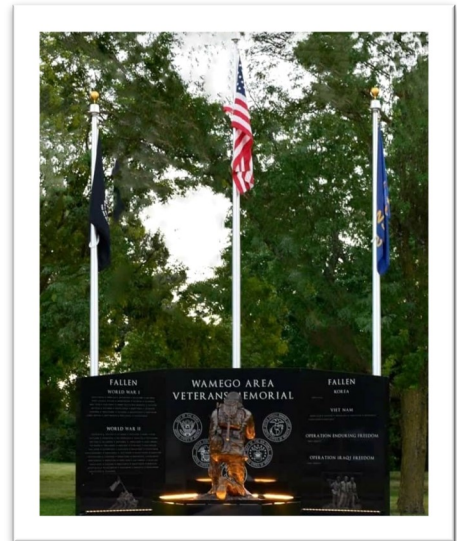
The program, TRADES OF HOPE, was presented by Barb Sanderson, who partners with the organization. The mission of Trades of Hope is to use sustainable business and job creation to empower women out of poverty in over 17 countries. Barb's Power-Point presentation focused on Haiti and the women artisans who create beautiful jewelry and ornaments created from cereal boxes. Barb demonstrated the process and explained that thousands of beads are made each day by the women. The artisans make it clear that they don't want charity, they only want an opportunity to provide for their families. It was a very enlightening program.



**GFWC AD ASTRA** was recognized for their donation to **Wamego Public Library** to benefit The **Story Walk project**. The project consists of a book that has been taken apart and presented page by page around a path to promote reading, exercise, and family time. 20 posts have been installed that display a page of the story. The books are rotated each month.

Our Club celebrated **Veteran's Day** at our **November** meeting with a flag folding ceremony given by American Legion Post

#172 members, Commander Gary McCloud and Legion Rider, Randy Mumpower, along with Bunny McCloud. Each of the 13 folds of the flag have a particular meaning, which was explained to the Club. Bunny McCloud presented each club member a packaged, folded, miniature flag with the meaning of the 13 folds included.



They shared the history of the **Veterans Memorial in Wamego City Park** dedicated Nov. 2016. The memorial was the vision of American Legion Post 172 Commander Gary McCloud, and some of the Legion Riders who saw other memorials as they participated in veteran's funerals. This vision included three years of dedicated work and fundraising to see Wamego's memorial to completion. The bronze sculpture, "Duty Calls", faces the granite memorial wall with 91 names of area soldiers who have paid the ultimate sacrifice to our country.

Cards were designed and signed by members of the Club to be mailed to **Cards For Veterans Charity Drive**. The cards will be placed in craft kits designed for the veterans.

Items for the Veterans were donated by members to be delivered to the **Veterans Hospital in Topeka**.

*Submitted by Joanie Doperalski  
President  
GFWC Ad Astra  
Wamego, Kansas*



## Wamego Study Club

### WAMEGO STUDY CLUB HAS HISTORY and EDUCATION MONTH

WAMEGO STUDY CLUB (WSC) met on October 19, 2020, for a tour, demonstration, and meeting at the Wamego Historical Museum. **Madge McDonald**, Curator of the Museum and member of Study Club, was the speaker. Our members enjoyed seeing and learning about the many exhibits and the history that Madge presented for our History and Education meeting.

President Linda Krebs thanked our new officers - **Cindy Bailey, Secretary** and **Loretta Tuma, Treasurer**, for accepting their new offices. Also, the outgoing offic-



ers **Madge McDonald and Patricia Strohmeyer**, Secretary and Treasurer, respectively, were thanked for their many years of service and the great job they have done for the club. A round of applause was given for these two ladies in gratitude for their conscientious work.

The members discussed the new "Cards for Veterans Charity Drive." Fave Crafts is hosting a CARD DRIVE to benefit recovering veterans and military members. The greeting cards will be added to the nearly half a million Therapeutic Craft Kits manufactured and distributed by Help Heal Veterans (healvets.org) at no cost to the veterans. The cards can be homemade or purchased. The maximum size is 5-1/2 x 8-1/2 inches. You can send your cards to: **Help Heal Veterans, Inc., 36585 Penfield Lane, Winchester, CA 82596**

More information can be found at [fave-crafts.com](http://fave-crafts.com).

The WSC Birthday Club recognized member birthdays in September and October with a small handmade gift given to Jackie Hays, Madge McDonald, Carol Coon, Joyce Blanka, and LaVon Rosell.



Happy birthday, ladies!

**Mary Jean Peterson**, Chairman of the Veteran's Committee, reminded members that in November we will be decorating and stuffing with candy 220 felt stockings during our Veterans' Workshop meeting. Mary Jean thanked the members that have assisted in cutting and sewing the stockings in preparation for November's workshop.

Linda Krebs told members we will be collecting donated items for the Colmery-O'Neil Veteran's Hospital in November and for the Wamego Christmas Bureau.

The hostesses, **Joyce Blanka, Madge McDonald, and LaVon Rosell**, served individually packaged refreshments and drinks.

*By Linda Krebs, President  
Wamego Study Club, Wamego, KS.*



*"Once in our world,  
a stable had  
something in it that  
was bigger than our  
whole world."*

*-C.S. Lewis*



**GFWC KANSAS CLUBWOMAN NEWS**

Official Publication of the  
General Federation of  
Women's Clubs of Kansas

Editor-in-Chief ..... Jan Moore  
GFWC of Kansas President 2020 - 2022  
3830 Ferguson Road  
Perry, KS 66073-4006  
Phone: 785-597-2177 (this is a screening  
telephone, listen for prompts)  
flowerlady\_2@yahoo.com

Editor.....Linda Loyd  
381 Birch St  
Gardner, KS 66030  
913-856-8602  
[lloyd05@embarqmail.com](mailto:lloyd05@embarqmail.com)

The GFWC Kansas Clubwoman News is printed  
four times per club year by Direct Mail Printers  
for the General Federation of Women's Clubs of  
Kansas.

**RETURN TO:**

GENERAL FEDERATION OF WOMEN'S  
CLUBS OF KANSAS  
JAN MOORE  
3830 FERGUSON ROAD  
PERRY, KS 66073-4006

Non-Profit Org.  
U.S. Postage  
**PAID**  
Permit No. 923  
Wichita, Kansas