

Thursday, Oct 28, 2021. Our day began at the City Market parking lot in Orchard Mesa where 11 members divided into 3 cars and thus ventured out for this wonderful day.



First stop was the museum. We were met at the entrance with a big smile and friendly Welcome. Then directed to the gift shop where we sign in and pay our small entrance fee.



While some paid their fee, others enjoyed browsing and waiting their turn.



Jan Reece is already making friends with one of the two docents' who gave us the tour. One group began inside and the second group toured the buildings outside. Two hours flew by before we realized the time. There was sooooo much to see – over 500,000 artifacts.

Richard E. Fike founded the Museum in 1997. He is a retired historical archaeologist having served as state archaeologist for the Bureau of Land Management in both Utah and Colorado.

Here we are in the main hallway of the 10,000 sq ft barn and Richard Fike is sharing his history. This barn was the first structure and he designed and build it in its entirety before adding period artifacts suitable for each “store”



The rapped expressions let you know we found his story interesting. The group in the above picture were lead by the lady seated in the picture to the left. She was quite entertaining and eager to answer all questions. This group began the tour inside.



Jim was the docent for group two and that tour began outside.

We asked questions about all the fixtures inside the Carriage Works building and were surprised at how many yokes were made for various animals as well as harnesses. And the wagons and carriages were fascinating. Yet each of us decided we prefer to revisit the past rather than live during that period.





Our men
seemed
destined for
jail!

Herman
doesn't look
too upset.

I'll bet he
gets out on
good
behavior,
being the

gentleman that he is!!!!



Dan doesn't seem too
distressed. Or was he reflecting on why he was in jail in the first
place!!!!



Notice the safe
on the right----a
most unusual
one. And notice
Bob Zaha's
hands..... in his
pockets as he
heads into the
cell

Any
relationship
between the
safe being open
and his hands in
his pockets?

Can you imagine living in log shack like these? Yet, even when poor, the people wanted education for their children. The school house was well furnished and cozy.



Notice the brick building in the far right? That was where the school marm lived. Although only 1 room, it had a bed, table, small kitchen and storage.

From the schoolhouse looking back to the main street you get a great view of the buildings.

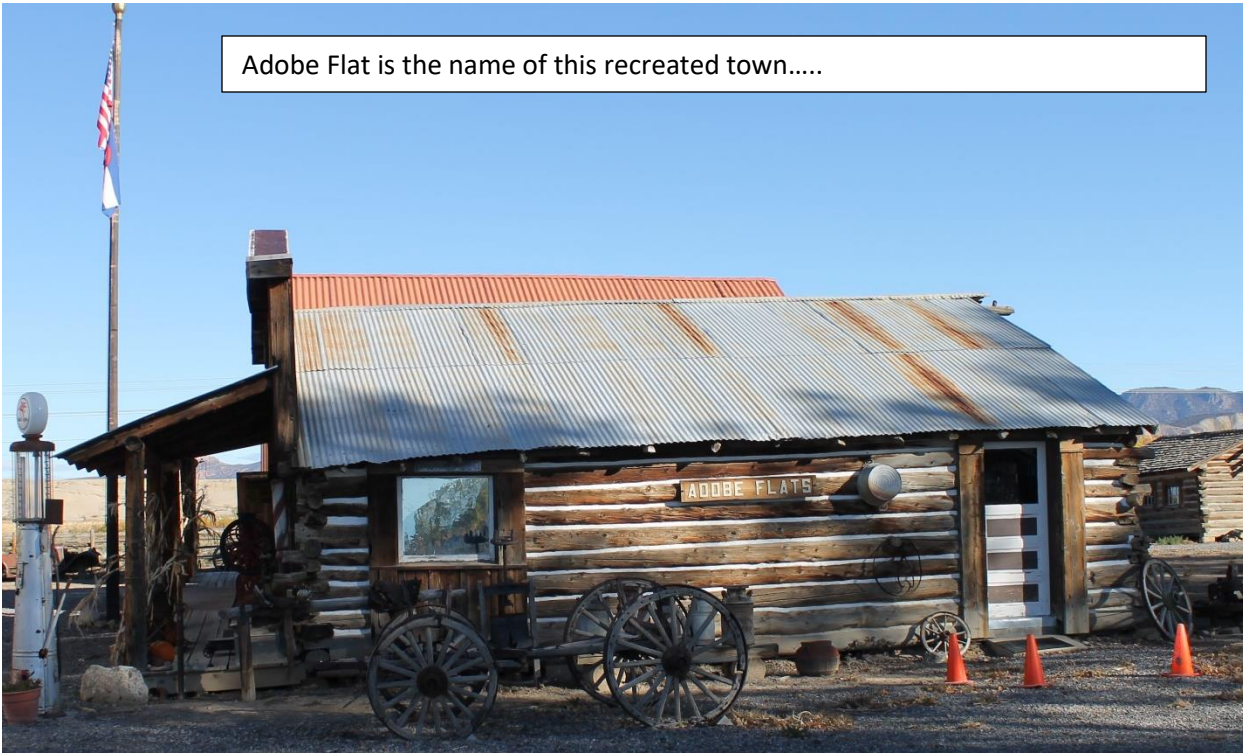
Remember your childhood and this type of playground equipment. I'll bet you played on one similar in structure though not as old. Round and round we would go until we were so dizzy we would almost fall off.



This group with their docent are having "recess". There was lots of walking so resting when you can is good.

Since Marguerite was involved in the school system for so many years she could probably answer lots of questions. She is a wealth of information about this area as she grew up in Hotchkiss.

Adobe Flat is the name of this recreated town.....



“ADOBE FLATS” is the name given to this recreated town where 14 building are furnished with appropriate artifacts. More building are being reassembled from their original location



From 1910-193 Montgomery Ward sold blueprints and pre-cut kits. If you follow the blueprint, this is a finished home you would build.

Let's take a look inside at the unique furnishings.

In the kitchen is this stove is in “mint” condition.



Any idea what this is?



We found some inside the homes and offices of a few of the buildings.

One was actually in this kitchen.

Ask one of the members who was on the trip. Or email me and I'll tell you. Quite an unusual item.



Both tour groups met in front of the General Store for this photo.

Two people in the photo are not members. Herman Murray (TR) was a guest of Jan Reece.

The unidentified lady kneeling was by herself and we asked her to join the tour with us.

Dan Clancy, Sue Palmer, Nancy Wood, Marguerite Collard, Judy Sealy
Bob Zaha, Jan Reece, Herman Murray (front) Kathy Nielsen, Rebekah McDermott, Jennifer Swayne

On with the tour:

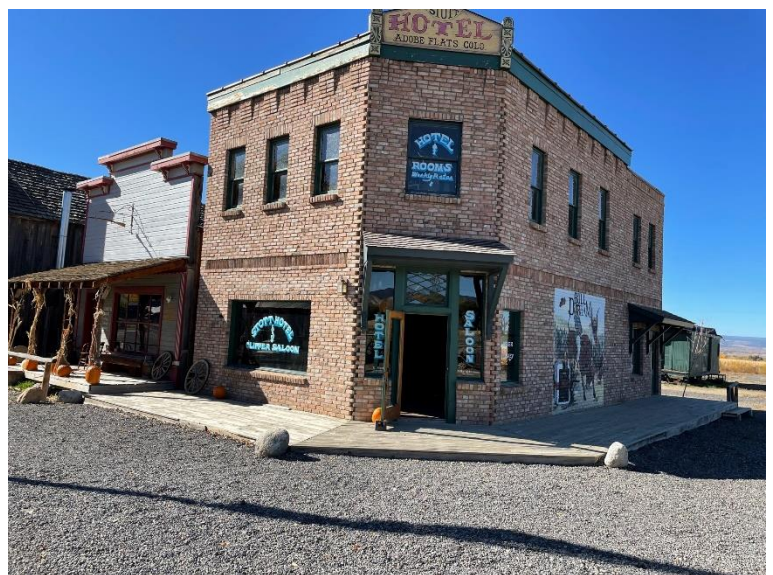
This brick building is the local hotel and is still hosting events. Next to it is the gunsmith.



Inside the hotel is this beautifully restore bar

I couldn't resist...

"Set 'm up Joe"



Buy now I hope you are curious enough about this museum to make a trip yourself. The group decided this is a MUST for our inbound ambassadors in 2022..

Our group is now finished touring the buildings and is back inside the large barn. Still more sights and "ohs" and "ahs" in store.



Can you imagine the diligence and patience it took to find each of these items. And they are in great condition. So fascinating to look at. We recognized many labels not longer produced.

This barn is 2 stories, and Richard used every inch of space.



We were told Richard's father was a musician and there is an entire back section of 3 rooms dedicated to him, his music, and musical instruments combined with old fashioned games of billiards, and other card games men played in saloons.

This mechanical instrument dates back to the later 1890's and is a combination mechanic violin along with a type of upright piano. Fascinating to see. ... Wish you had been with us on this delightful tour.

Next, lunch at Rita Silva's home.



At Rita's home Kathy and Rita quickly got everything out for us to serve ourselves her wonderful Navajo Tacos and Fry bread. Everyone quickly began assembling their plates.



Before digging in to this yummy plate I was able to take a quick snap. Doesn't this make your mouth water?



Rita's dining room was large enough to seat most of us. Notice the artifacts on her walls. When asked, she said they are either garage sale or Goodwill finds....

THANK YOU

RITA SILVA!!!

You prepared a scrumptious meal, offered hospitality and graciously opened your home. And we ate and ate and ate.....



Rita's house was certainly large enough. She has plenty of chairs for seating. AND, the views from 3 sides of the room out her glass windows takes your breath away.



Marguerite was admiring some of Rita's trinkets and Jennifer is not sure what she is seeing. Since the wall she is looking at is dedicated to John Wayne, maybe she is intrigued by one of the pictures.



Before leaving , we took one last look from the front of her house. The mountains go on and on and on.....

Let's gathered for another group shot. Still talking and laughing, we were having a grand time.



A few beverages were left but will probably be consumed going home. Water, soda and iced tea was perfect with our meal. Rita had provided the meal; the group brought beverages and dessert.

Everyone pitches in to help.

With our stomachs full and having stretched our legs a bit, we are ready for the next point of interest.

Everyone climb back into your cars. AND AWAY WE GO

FOR OUR NEXT ADVENTURE!

**Our next stop
Morrow Point Dam**

Morrow Point Dam is a 468-foot-tall concrete double-arch dam on the Gunnison River located in Colorado, the first dam of its type built by the U.S. Bureau of Reclamation. [Wikipedia](#)

Opened: 1968

Height: 468'

Location: [Cimarron](#), [Gunnison County](#), [Colorado](#), [USA](#)

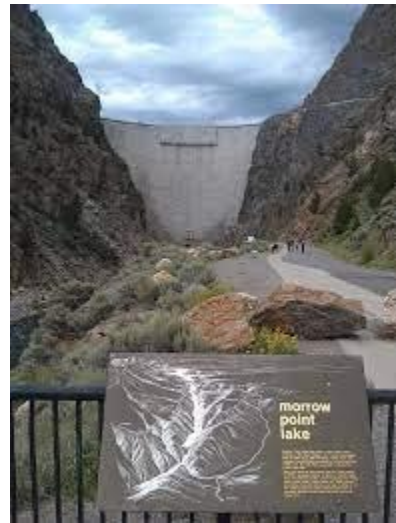
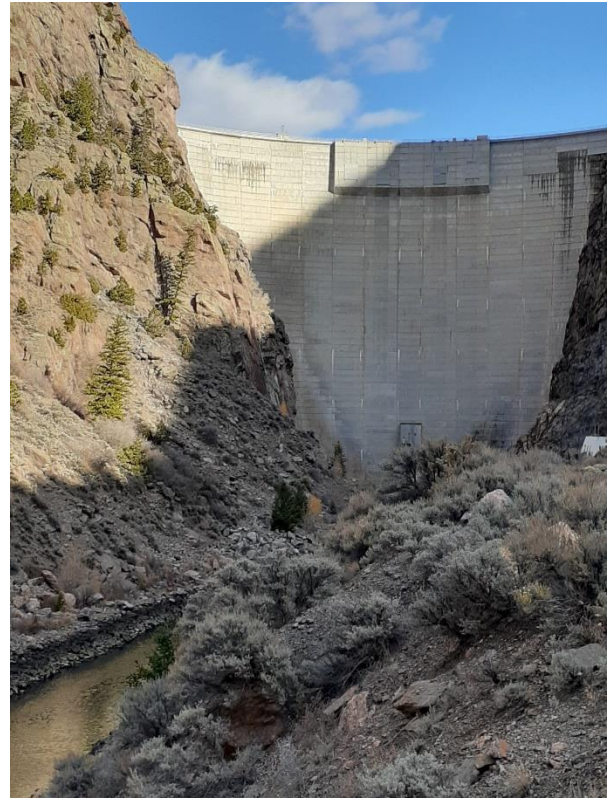
Installed capacity: 173.3 MW

Total capacity: 117,190 acre-feet (0.14455 km³)

Dam volume: 365,180 cu yd (279,200 m³)

Annual generation: 269,193,371 KWh

Morrow Point Dan is ½ mile east of Rita's home. A sight we had to see.



At the entrance of Morrow Point Dam is this last vestige of a train.

That road leads back to Rita's home only ½ mile away. She says she and her dog walk down here a lot in good weather.



Cimarron Train Restoration Project »

At the mouth of Cimarron Creek, just upstream from where it spills into the Gunnison River, stands a reminder of bygone days in railroading. Recently restored locomotive #278, its coal tender, a boxcar, and caboose stand atop the last remaining railroad trestle along the Black Canyon of the Gunnison route. What can now be seen in this exhibit is an excellent example of rolling stock railroad cars used on this branch of the Denver & Rio Grande (D&RG) Narrow Gauge Railroad in its heyday.

Herman Murray, Jan Reece and Sue Palmer are enjoying the view.....

Jan(middle) shared that her husband worked on this railroad.



Last Stop Black Canyon of the Gunnison

Black Canyon of the Gunnison National Park is in western Colorado. It surrounds part of a deep, steep-walled gorge carved through Precambrian rock by the Gunnison River. Roads and trails along the north and south rims have views of the Black Canyon's dramatic drops and the striated Painted Wall cliff. The winding East Portal Road descends to the river. Wildlife includes mule deer, elk and golden eagles.



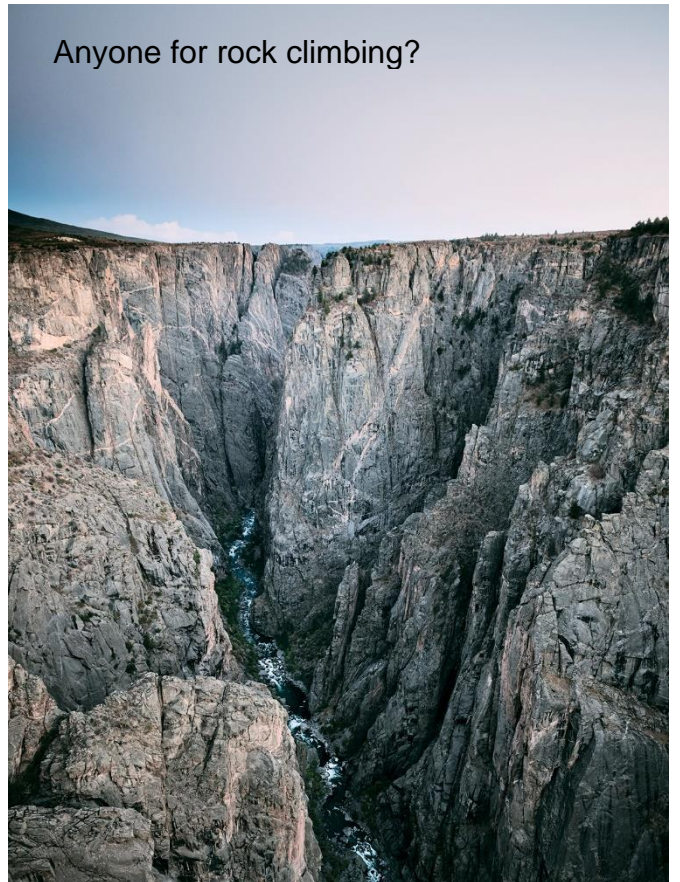
From the location of these members, you get a little bit of an idea of the greatness and majesty of these mountains. Where they are standing, the drop off is 2,746 feet, according to a posted sign.



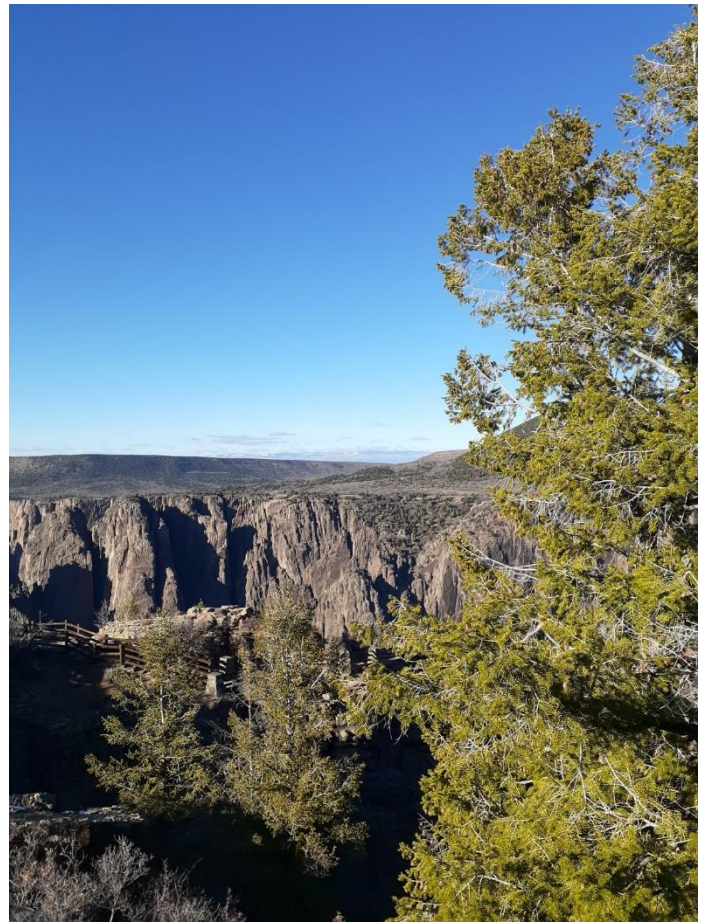
Those craggy mountains have beauty in the rock formation with various colors as well as awesomeness with the sheer size.



Anyone for rock climbing?



“Hello below” we are enjoying a panorama view from our safe perch at the Visitor’s Center



Sue Palmer seemed to say it best.

“Hi, come on down”

“Greetings, see the majesty”

“Hello back there, do you see all this beauty”?

Carrying these sights in our minds is a great way to end our tour and begin our ride back to Grand Junction.

I hope the pictures bring back wonderful memories! And to those who were not able to make this trip, there is next year.

Look for more interesting and exciting Day Trips coming up in 2022. Dan Clancy is a master at planning and executing.

