



Membership Criteria

When you make a major gift in your lifetime (cumulative value equal to or greater than \$5,000) or notify us in writing

of your intent to make a

similarly sized legacy gift through a trust, bequest, or other planned gift -- you become eligible for membership in the Angel Society.

Your lifetime or legacy gift may be unrestricted (it can be used at the discretion of the Cortland Rural Cemetery Foundation or Trustees) – or restricted for a specific use (such as building the Foundation’s interest-bearing endowment fund, maintaining roads or grounds, purchasing equipment, or funding staff salaries). In addition to simple ‘cash’ contributions, other qualifying gifts include:

- A **bequest** by will or living trust
- A **life insurance policy**, be it a policy that is no longer needed for its original purpose or a new policy enabling a substantial future gift at a modest annual cost
- A gift of **retirement plan assets** (e.g. IRAs, bank accounts, 401ks, etc.) which might otherwise be subject to 'double taxation,' limiting their value to your heirs

- A **charitable gift annuity**, providing lifetime income to you or a loved one, as well as income and estate tax savings; this type of gift must be set up by a licensed legal or financial advisor
- A **charitable remainder trust**, providing lifetime income for you or a family member, income and estate tax savings, and the avoidance of capital gains taxes on highly appreciated property
- A **charitable lead trust**, which is an intergenerational wealth-transfer strategy enabling you to provide for your heirs and the cemetery – while also sharply reducing gift and estate taxes
- Establishing a **permanent endowment fund** for a specific purpose
- **Other gifts** and giving strategies may qualify

To develop a legacy-giving approach that’s right for you, contact your legal or tax advisor to discuss your goals. Or, for simple ‘cash’ donations, feel free to contact the Cortland Rural Cemetery Foundation directly.



What is the difference between the CRC Foundation and Trustees?

The Foundation’s mission is to raise funds for the cemetery’s benefit. Funds donated to the Foundation can be placed in the Foundation’s interest-bearing Permanent Endowment, designated for specific uses at the cemetery, or entirely undesignated. By contrast, the Cemetery’s Board of Trustees oversees and manages the Cemetery’s operations and finances.

Both are tax-exempt, non-profit organizations: The Foundation is a 501(c)3, while the cemetery has the special designation of 501(c)13, reserved for NYS regulated cemeteries. While both can accept charitable gifts, we encourage donors to direct their gifts to the Foundation.

Can a gift to the Foundation be used immediately by the cemetery?

Yes. Just indicate your preferred use (either a designated activity or general operations) when you make your gift to the Foundation via a cover note or a notation on your check.

You may also choose to direct your gift to the Foundation’s Endowment Fund, where it will remain in an interest-bearing account that helps to fund cemetery operations over time.

Or you can designate your gift as a non-Endowment, non-designated resource that the Foundation can use on an as-needed, where-needed basis — under advisement of the Trustees.

Is there standard ‘language’ one might use to direct a legacy gift/bequest to the Cemetery Foundation?

Your legal or tax advisor can assist with this, but a tried-and-true starting point is:

I give (\$) (%) of my estate to the Cortland Rural Cemetery Foundation, PO Box 288, Cortland, NY 13045 (tax ID 16-1516368). My bequest shall be (a.) used at the Foundation’s discretion, (b.) applied toward the Foundation’s Endowment, or (c.) applied toward [insert specific cemetery activity, project, or expense].

Why become an official Angel Society member?

By joining the Society – you allow us to express our appreciation *and* help us plan for the future. Of course, if you prefer to quietly make your gifts to the Cortland Rural Cemetery Foundation *without* officially becoming a member of our Angel Society, we will honor your request.



What are the membership benefits of the Angel Society?

Membership offers many benefits, including:

- Inclusion on the Angel Society membership plaque located in the Gibson Memorial Chapel
- Recognition in the Society's membership roster published on the cemetery website
- Inclusion on the Society mailing list, used for occasional, notices, and invitation to Society and public events
- And other forms of recognition that the Foundation wishes to introduce

Learn more, today!

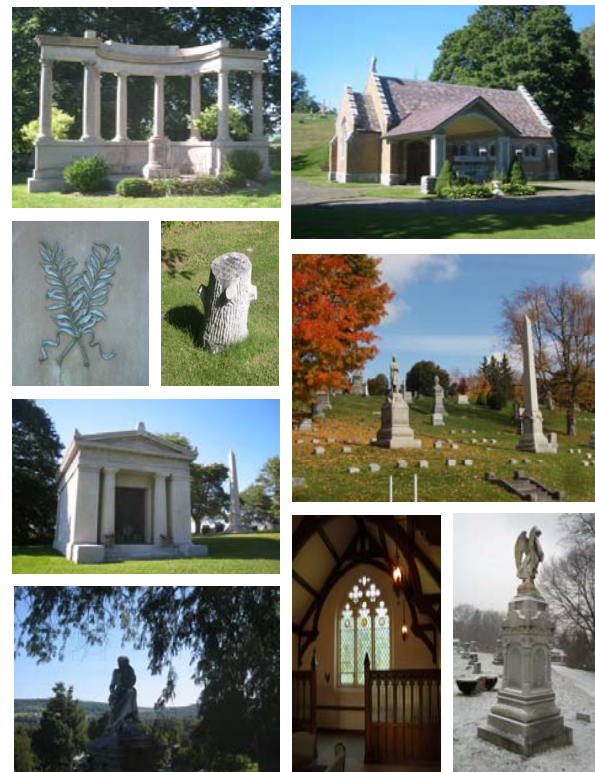
The Cortland Rural Cemetery Foundation is grateful that you are considering us in your philanthropic planning. To discuss your interest in making a major or planned gift, please contact a Board member of the Cemetery Foundation or a member of the Cemetery Board of Trustees at:

Cortland Rural Cemetery Foundation
PO Box 288
Cortland, NY 13045
607.756.6022
contact@cortland-rural-cemetery.com

Interested in making a major gift to the cemetery — or underwriting a specific need or initiative? Contact the cemetery for a current list of needs and naming opportunities!



CORTLAND RURAL CEMETERY
Lest we forget.



CORTLAND RURAL CEMETERY
Lest we forget.



Cortland Rural Cemetery
Angel Society

What is the Cortland Rural Cemetery Foundation Angel Society?

Established in the Fall of 2013, the Cortland Rural Cemetery Foundation Angel Society recognizes and honors individuals

and families who have made a major lifetime contribution or who have established a legacy gift benefiting the Cortland Rural Cemetery. On occasion, the Foundation Board may also elect to induct volunteers or others whose in-kind, financial, or service contributions are deemed to be extraordinary.

In each of these cases, Angel Society members are generous benefactors who have demonstrated a deep appreciation for the cemetery's primary mission of providing a peaceful, respectful, and well-cared-for final resting place for our community's loved ones, and an abiding appreciation for the cemetery's intrinsic historic, cultural, and natural value.

Angel Society for Major & Legacy Giving



www.cortland-rural-cemetery.com



www.cortland-rural-cemetery.com