

DRAFT

ADAMS TOWNSHIP

RECREATION PLAN

2023-2027

Table of Contents

Introduction.....	p. 1
Adams Township Description.....	p. 2-5
Natural Resources Inventory.....	p. 5-8
Recreation Inventory.....	p. 9-13
Description of Planning Process.....	p. 14
Action Program.....	p. 15-16
Basis for Action Program	p. 17-18
Administrative Structure.....	p. 19-20
Plan Adoption.....	p. 21

Attachments:

- 1) Census Data
- 2) Survey Results and Comments
- 3) Notice of Public Hearing
- 4) Minutes of Public Hearing
- 5) Comments from Public Hearing
- 6) Copy of the Board's Resolution of Adoption
- 7) Maps

INTRODUCTION

Adams Township is home to the historic copper mining communities of Atlantic Mine, Baltic, Trimountain and Painesdale with the community of Toivola to the south. The Township is fortunate to have abundant rural forested lands for outdoor recreation resources and an indoor seasonal ice skating facility. The location of Michigan Technological University in nearby Houghton has provided recreation facilities that typically would not be available in a small rural community. The Township, however, wishes to develop additional recreational opportunities within the Township for its residents.

The Adams Township Recreation Plan describes the community, inventories existing recreation facilities, and presents a five year action program for future recreational development. The Recreation Plan was adopted by the Adams Township Board on:

A copy of the Board's resolution has been inserted in the Plan.

ADAMS TOWNSHIP DESCRIPTION

Adams Township is located in northern, central Houghton County in the Upper Peninsula of Michigan, approximately 4 miles south of Houghton. The communities of Atlantic Mine, Baltic, Trimountain, Painesdale and Toivola are located along the M-26 corridor and are governed by the Township Board.

SOCIAL AND CULTURAL CHARACTERISTICS

The population of the western Upper Peninsula reached a peak in the 1920's and 1930's when mining and lumbering activities were booming. Since that time there has been considerable emigration of residents in response to the decline in those industries. The population of Houghton County and Adams Township also followed this trend. Adams Township's population decreased by 117 from the 2000 census to 2020. The population characteristics were obtained from 2020 Census Bureau Community Survey 5 Year Estimates.

Township residents are keenly aware of the growing seasonal tourist influx and recent growth in the general Houghton area. Tourists are seeking outdoor recreation opportunities in the rural environment the Township provides. Also local growth has increased the need for playgrounds for families with small children.

This area was home to indigenous peoples and the Keweenaw Bay Indian Community stills holds ceded lands in Houghton County and influences local natural resources policy. Immigration to the area during peak mining and lumbering activity attracted European immigrants from many different countries. This resulted in a great amount of cultural diversity that still exists on a smaller scale today. The largest percentage of Township residents today hail from Finnish and Scandinavian ancestors. As a result the interest in winter recreation is strong, as the ethnic and cultural traditions are passed from one generation to the next. Skating and skiing rank among the favorite interests of residents.

LAND USE

Adams Township is mostly forested with some farmland present. The southeast corner of the Township is adjacent to part of the Copper Country State Forest. The primary agricultural land use is logging and forest products.

The communities of Atlantic Mine, Village of South Range, Baltic, Trimountain, Painesdale and Toivola are located proximate to Highway M-26 in the central part of the Township. They are home to the largest population concentrations within the Township and are predominantly residential. The rural character of the towns combined with the rolling woodlands make an attractive setting for tourists seeking relaxation and recreation. Little commercial activity exists within the Township with the exception of several bars, restaurants and a gas station. Growth closer to Houghton has been more attractive to industries , contractors and manufacturers. Within the towns are a number of vacant lots and additional open spaces.

LOCAL ECONOMY

The area relies on logging and the forestry industry such as Northern Hardwoods Mill as major employers. Also Michigan Technological University, Somero Laser Screeds, local construction and development firms, and local retail stores are large employers within the area and provide jobs to residents and neighboring communities. Adams Township is a low income community with 13.4% of its residents below the federal poverty level (2020)

TRANSPORTATION SYSTEMS

The main transportation corridor within Adams Township is Highway M-26. It divides the Township from northeast to southwest as it traverses the length of the Township. It serves as a primary arterial connection between the small towns along its roadside and the major county employment center of Houghton. The highway is a two-lane road in good condition. Highway maintenance is provided by the Michigan Department of Transportation. Local roads are maintained by the Houghton County Road Commission. There is no rail service, local bus service is somewhat available through Community Action. The nearest airport is Houghton County Airport, located north of Hancock and currently serviced by United Airlines thru via SkyWest Airlines.

TOPOGRAPHY

Adams Township has varied topography and rugged terrain. Elevations vary greatly on both sides of the M-26 corridor, in some places exceeding 1200 above mean sea level. The road itself winds and twists through the hills. Slopes vary greatly from gently rolling woodlands to very steep slopes, deep gullies and outcroppings along the waterways and transportation routes throughout the Township.

The M-26 corridor is situated along the top of a ridge that bisects the township.

SOILS

The soils in Adams Township can best be described in general characteristics. They are primarily very deep and located on nearly level to very steep slopes. As a result they are well drained and moderately well drained loamy soils found on till plains and moraines.

CLIMACTIC CONDITIONS

The climate in Adams Township is greatly affected by Lake Superior. The lake moderates temperatures year round with moisture from its surface generating large snowfalls during winter months.

Data recorded at a nearby weather station over a twenty-five year period indicates a 24.2 degree average winter temperature. Summer temperature averages 65.1 degrees. Annual precipitation is approximately 34 inches and average seasonal snowfall is over 225 inches, with some locations in higher elevations recording higher snow totals. The Township's location at 47 degrees North also brings longer daylight in the summer months and very long nights in the winter months.

NATURAL RESOURCES INVENTORY

Most of the natural resources listed in this inventory are available for enjoyment by Adams Township residents but the properties holding these resources are largely owned by the State of Michigan and private/corporate timberlands companies. The Township relies on good stewardship by these entities and the oversight of the state to preserve the beauty and integrity of local woods and waters for generations to come.

WATER RESOURCES

The Township has numerous small lakes in the south end including Toivola Lakes, Lake Eva, Pine Lake, Hall lake, Eleven Mile, Twelve Mile and Thirteen Mile Lakes, that are suitable for fishing, canoeing and kayaking. Lake Perrault is a designated trout lake and trout, panfish, bass and pike can be found in many of the other local lakes. The headwaters of many rivers and streams that drain to Lake Superior are located within the Township including the Pilgrim River that drains to the east and the Salmon-Trout River that drains to the west. Many of these rivers and streams hold fishable brook trout populations. Highway M-26 divides the watersheds along a ridge that bisects the Township.

Groundwater availability in Adams Township is fair throughout most of the Township and poor in some highly localized areas. Groundwater quality is generally acceptable for most uses, though some wells may contain objectionable amounts of iron.

VEGETATION AND WILDLIFE

Most of Adams Township is forested and retains natural vegetation due to sound forest management practices. An abundant variety of ecosystems and habitat allows a great variety of wildlife and plant life to thrive. Approximately 82% of Houghton County is woodland. Some of this property is owned by federal and state agencies with the majority of it remaining in private ownership. Most of the private land is owned by forest industry companies.

Upland soils in the Township tend to support the following species dominated by northern hardwoods:

Sugar Maple	Yellow Birch	Balsam Fir
Red Maple	Hemlock	White Spruce
Basswood	Black Cherry	Poplar

Wetter soils are dominated by the following tree species:

Red Maple	Paper Birch
Poplar	White Spruce

The numerous Wetlands typically contain:

Balsam Fir	Northern White Cedar
Black Spruce	Tamarack

Wildlife within the Township is abundant and varied. The soils and vegetation present have created suitable habitats for white-tailed deer, black bear, coyote, wolves, raccoons, porcupines, squirrels, snowshoe hares, bald eagles, hawks, owls, ruffed grouse and songbirds. Fish present in local lakes and streams include pike, walleye, perch, large and small mouth bass, brook trout, rainbow trout and panfish.

Migratory birds, ducks and geese enjoy the habitat afforded them within the many wetlands in the Township. These low-lying areas are productive for resting and feeding during migration as well as breeding activity. Species frequenting the wetlands include ducks, geese, cranes, kingfishers and other water birds as well as muskrats, beaver, otters and mink.

RECREATION INVENTORY

Adams Township maintains access to a number of recreation facilities for both local residents and tourists . The following inventory describes the types and locations of recreation facilities currently available in the Township and nearby. In addition, accessibility assessments are provided for each Township site based on the parameters outlined in the “DNR Guidelines for the Development of Community Park, Recreation, Open Space and Greenway Plans” as follows:

- 1 = none of the facilities /park areas meet accessibility guidelines
- 2 = some of the facilities /park areas meet accessibility guidelines
- 3 = most of the facilities /park areas meet accessibility guidelines
- 4 = the entire park meets accessibility guidelines
- 5 = the entire park was developed /renovated using the principles of universal design

Based on this inventory the need for improvements and additional recreation facilities can be fully evaluated. Accessibility assessments were completed by the Planning Commission . Any accessibility deficiencies found in the assessment will be addressed in future site project upgrades as funding becomes available . Location maps of Township recreation sites are included in the appendix.

Seven Principles of Universal Design

1. *Equitable Use:* The design is useful and marketable to any group of users
2. *Flexibility in Use:* The design accommodates a wide range of individual preferences and abilities
3. *Simple and Intuitive Use:* Use of the design is easy to understand
4. *Perceptible Information:* The design communicates necessary information effectively to the user
5. *Tolerance for Error:* The design minimizes hazards and the adverse consequences of accidental or unintentional actions
6. *Low Physical Effort:* The design can be used efficiently and comfortably
7. *Size and Space for Approach and Use:* Appropriate size and space is provided for approach and use

RECREATION INVENTORY

Recreation facilities in the Township are somewhat limited. The existing facilities are listed below along with their respective features:

BALTIC RECREATION CENTER

The Recreation Center in Baltic consists of an indoor seasonal ice rink and basketball court on approximately 1/2 acre. The indoor ice rink is regularly used in winter months by local residents. The facility is owned and managed by Adams Township.

Accessibility Assessment: 2 = some of the facility's areas meet accessibility guidelines

SOUTH RANGE ELEMENTARY SCHOOL

Swings, slides, climbing structures etc.

Accessibility Assessment: 3= most of the facility/park areas meet accessibility guidelines

PANGRAZZI PARK

Swings, jungle gym, sandbox, children's riders, basketball court/ tennis court

Accessibility Assessment: 2= some of the facility/park areas meet accessibility guidelines

ATLANTIC MINE PLAYGROUND

Swings, climbing structures, spring rider

Accessibility Assessment: 2= some of the facility/park areas meet accessibility guidelines

PAINESDALE PLAYGROUND

Fitness/Playground equipment

Accessibility Assessment: 2= some of the facility/park areas meet accessibility guidelines

BALTIC PLAYGROUND

To be developed as a neighborhood playground by the Township on land donated by residents of Baltic.

Accessibility Assessment: undeveloped lot

WATER TOWER TRAILS

Walking/hiking trails on a newly acquired property in South Range to be developed jointly by Adams Township and the Village of South Range.

Accessibility Assessment: undeveloped

PAINESDALE MINE and SHAFT MUSEUM and TOURS

Painesdale Mine and Shaft, Inc. offer the opportunity to experience the sights, sounds, smells and feel of mining “as it once was” at the Champion #4 Shaft-Rockhouse in Painesdale. The group maintains a collection of copper mining artifacts and local lore, and offers guided tours of the Shafthouse.

VFW BALLFIELDS

The VFW baseball diamonds located in South Range consist of a Little League ball field and an adult league ball field. They are owned by the South Range VFW and serve local league play.

Accessibility Assessment: 2= some of the facility/park areas meet accessibility guidelines

TRIMOUNTAIN

The Planning Commission will be start plans for placing a recreation facility in Trimountain in future meetings

SNOWMOBILE/ATV TRAILS

The Bill Nichols Snowmobile Trail winds through the Township from Toivola north through Painesdale, Trimountain, South Range and Atlantic Mine following old railroads grades. The trail is maintained by the Michigan DNR and is heavily used by snowmobilers and ATVs.

Additional recreation facilities are found within the region beyond the Township boundary. Stanton Township's Agate Beach Park, Twin Lakes State Park, McLain State Park and Baraga State Park are all within a short drive of Adams Township residents and provide easy access to camping and recreation.

Ice skating and hockey are popular winter sports in the area and can be enjoyed by traveling to indoor ice facilities at the Houghton County Arena in Hancock, the Dee Stadium or Student Development Center in Houghton, the Baltic Recreation Center, or the Stanton Township Recreation Center. There are often outdoor opportunities for skating in the area. Cross-country skiing has long been a traditional winter activity in the Upper Peninsula and the growing popularity in the Midwest has benefited regional tourism. Groomed and tracked trails are available in at several locations nearby. Improvements to existing trails and creation of additional trails are needed to accommodate visiting skiers and residents alike.

Downhill skiing can be experienced at Mt. Ripley in Hancock, Mt. Bohemia in Lac La Belle, at Porcupine Mountain State Park and several other Upper Peninsula ski hills.

The area is rich in water-oriented recreation opportunities. In addition to numerous inland lakes and streams, Lake Superior and the Portage waterway are just a short distance away. The waterfront marinas in Houghton and Hancock can accommodate vessels of most sizes. Swimming is available at numerous beaches throughout the area as well as pools at Michigan Technological University, Houghton High School, and Jeffers High School.

Golf is another very popular recreational pastime. There are courses available near Twin Lakes, Houghton, Calumet, Copper Harbor, and L'Anse. Disc golf is also growing in popularity in the area, courses are available in Calumet, Lake Linden, at Michigan Tech, and someday in the near future Adams Township.

DESCRIPTION OF PLANNING PROCESS

The development of the original Adams Township Recreation Plan involved the Adams Township Board and a recreation committee made up of two board members and two Adams Township citizens. The Township Board solicited public input at numerous board meetings over a number of years before adopting the original plan. That plan has now been updated by the Adams Township Planning Commission with input from residents at Township Board meetings, Planning Commission meetings, and through a public survey developed by the Planning Commission. The survey was sent first class mail to township property tax payers, made available thru a link at the Township website and Facebook pages, and copies were available at local post offices. The survey was well received by residents; 83 were returned by mail and 61 were filled out online for a total of 144. The top five areas of interest chosen by respondents were 1) walking, 2) hiking, 3) playgrounds, 4) bicycling, and 5) ice skating. The survey results were used to help prioritize the township's Recreation Action Plan. Survey results are included in the appendix. The updated Recreation Plan was made available for 30 days for public review on the township's website and thru a link on the township's Facebook page. Printed copies were available at the Township Office in Baltic. A notice was published in the Daily Mining Gazette on announcing the 30 day review period, followed by a public hearing held on

This hearing was attended by approximately _____ persons who provided input to the Township Board on recreation needs and opportunities. This input will help determine the recreation needs of the Township for the next five years and assist in setting priorities for the five year action plan. Public comments are included in the appendix.

ACTION PROGRAM

CAPITAL IMPROVEMENT SCHEDULE

A Five Year Action Program has been developed for Adams Township recreational facilities. Action Program projects are listed below with the highest priorities first:

Year	Project	Cost	Funding
2023-24	Apply for Recreation Grants to repair/replace the Baltic Recreation Center Roof	\$60,000	\$30,000 DNR \$30,000 (Recreation fund, Township employees and volunteers)
	Begin site work on the new Baltic Playground.	\$10,000	Township employees and volunteers
	Begin work on Water Tower Trails	tbd	Volunteers and Township employees

2024-25	Install playground equipment at the Baltic Playground	\$25,000	\$12,500 DNR \$12,500 (Recreation fund and volunteers)
	Procure site for disc golf course and begin development	\$10,000	\$5000 DNR \$5000 (Recreation fund, Township employees and volunteers)
2026	Apply for Recreation Grant (\$25,000 Grant with \$25,000 local share) for additional improvements to Township playgrounds and trails.	\$50,000	\$25,000 DNR \$25,000 (Recreation fund and volunteers)

BASIS FOR ACTION PROGRAM

This section of the Recreation Plan describes the projects included in the Action Program their importance to the community. One of the priority goals of the Township is to meet the needs of all residents, therefore upgrades to better meet accessibility guidelines will be a part of all plans going forward. While some of these facilities may seem commonplace in other communities, Adams Township is quite rural and the need for local recreation facilities is due to the distance from other existing facilities and the limited number of existing recreational opportunities. This distance is further amplified by the long winters and relative isolation experienced in the northern climate. While a limited number of indoor activities are currently available there is a lack of outdoor multi-seasonal facilities that allow for large muscle group and motor skill development in children and residents. The following projects can greatly contribute to the recreation needs of the Township for the next five years.

BALTIC RECREATION CENTER REPAIRS

The Center's ice rink is one of the most popular recreational venues in the Township. The roof has fallen into disrepair and improvements are needed to facilitate the making and keeping of ice. There is also interest in developing additional uses for this space, including the desire of residents for a pickleball court.

PLAYGROUND CONSTRUCTION AND IMPROVEMENTS

There is strong local interest in maintaining and developing playgrounds for child and family use. Changing industry safety standards task us with keeping Township playgrounds in compliance with current and future standards in surfaces, safety and accessibility. A donation of land in Baltic will allow the Township to site a playground there. Other communities are either still waiting for a playground or need upgrades to their existing facility.

DEVELOPMENT OF WALKING/HIKING and BIKING TRAILS

The Recreation Survey results indicated residents desire walking, hiking and biking trails. The Township will look for areas that can be developed to meet these needs. Work will begin this year on a newly acquired property in South Range that should be suitable for some trails.

ADDITIONAL OUTDOOR ACTIVITY AREAS

In addition to the above mentioned projects and improvements development of walking/hiking trails, bicycling trails, outdoor volleyball, basketball and the pickleball courts would provide more low cost recreation for older children and adults during the warmer months.

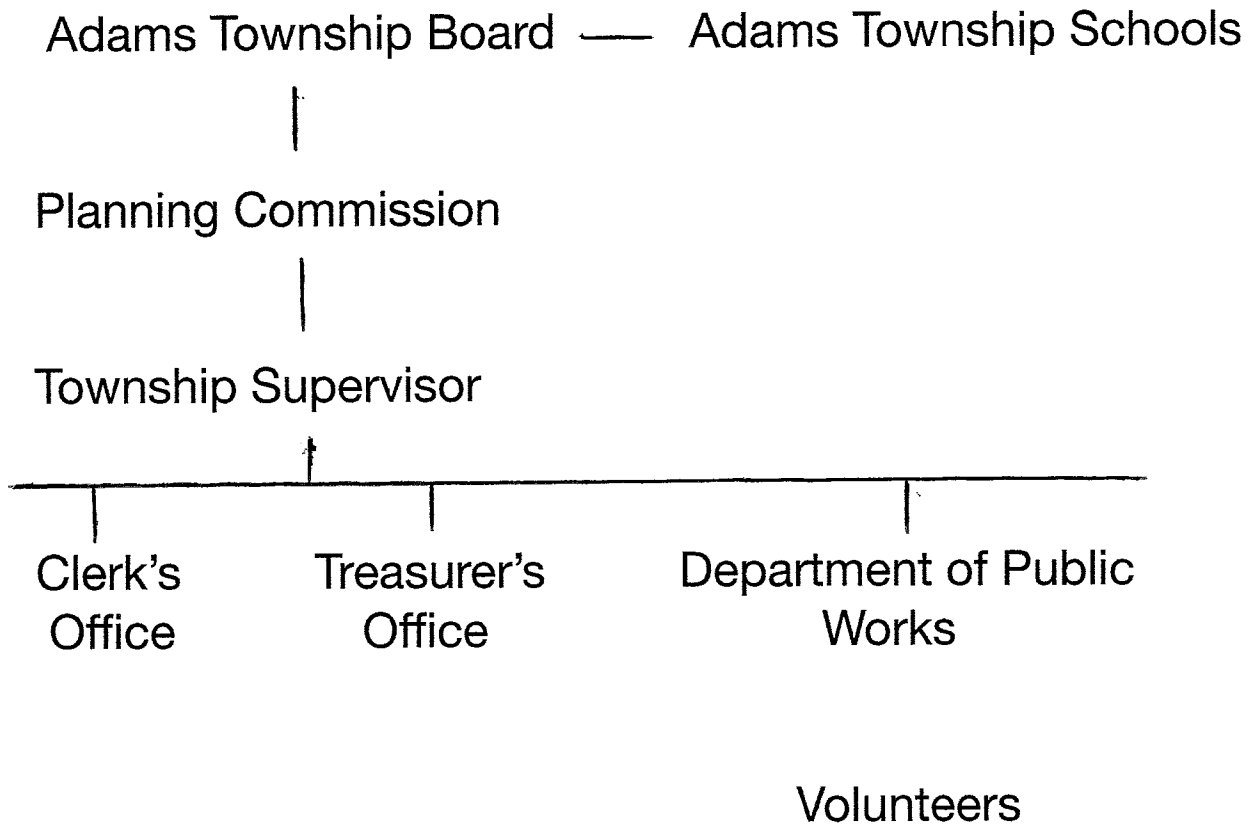
ADMINISTRATIVE STRUCTURE

In Adams Township the park and recreation facilities are managed primarily by the Township Board, with the exception of school-related properties, the snowmobile trails and the VFW ball fields. The Township Planning Commission serves as a committee to develop plans and recommendations for Township recreation facilities and programs.

Adams Township supports and maintains recreation facilities through annual budget appropriations. The Township's annual budget for recreation activities in the fiscal year 2023 is \$100,000. This budget is typically used to support the Baltic Recreation Center activities and maintain the playgrounds. Maintenance is carried out by Township employees and citizen volunteers.

The Township seeks to expand its recreational base and expects to increase its recreational support with the aid of local residents and annual budget appropriations.

Adams Township Administrative Structure



PLAN ADOPTION

The Adams Township Recreation Plan was adopted by the Adams Township Board after a public hearing held _____
A copy of the resolution is attached to the Plan.

Adams Township Board—

Gerry Heikkinen	Supervisor
Debra Pindral	Clerk
Tracy Immonen	Treasurer
Paul Eister	Trustee
Diane Keranen	Trustee

Adams Township Planning Commission —

Martha Dugdale	Chairperson
Terry Parolini	Secretary
Paul Eister	Commissioner
Sherry Kinnunen	Commissioner
Dan Coponen	Commissioner

ATTACHMENTS

POPULATION CHARACTERISTICS

	Adams Township	Houghton County
2000 Population	2747	36,016
2020 Population	2630	37,361
Population Change	-117	+1,345
# of Males	1415	
# of Females	1215	
Under 5 Years of Age	220	
18 and Over	1840	
65 and Over	410	
# White	2581	
# Black	14	
#American Indian	1	
# Other	34	
Median Age	31.4	
Persons in PreS, Elem, HS	539	
% 25 Yrs & Over HS Grads	32.6%	
# of Housing Units	1192	
# of Occupied Housing Units	1010	
Median Household Income	\$55,481	
Per Capita Income	\$23,612	
Median Family Income	\$71,771	
Persons Below Poverty Level	348	
% Below Poverty Level	13.4%	

Data obtained from the U.S. Census 2020 Community Survey Estimates.

Survey Results

The survey made available to Adams Township residents offered 21 activity choices plus a place for “other” choices, comments and the opportunity to volunteer. Respondents were asked to rate activities on a scale of 1 to 5 with 1 being the most preferred. The top ten results are shown below in order of preference:

- 1) Walking
- 2) Hiking
- 3) Playgrounds
- 4) Bicycling
- 5) Ice skating
- 6) Snowshoeing
- 7) Jogging
- 8) Hockey
- 9) Skiing
- 10) Picnicking

There was interest in all the activity choices and a number of others were suggested, including:

Scooter/skateboard parks and trails
Roller blade trails
Splash and play facility
Dog park
Fishing club
Bingo
Dances
Indoor swimming

The survey also asked for the ages of those in the respondents household:

Age distribution

Under 5 yrs old	36	19-30 yrs old	39
6-12 yrs old	45	31-60 yrs old	153
13-18 yrs old	31	61+ yrs old	77

A total of 145 surveys were returned and 27 people also included contact information for our volunteers list. Comments from the surveys are included below:

Thanks Heather!

Each town in Adams Twp should have at least 1 playground. Not everyone can travel to a different town. Also a place for skateboards so the kids aren't doing it in parking lots.

Would love to see a connecting trail system from MTU trails through Atlantic Mine to Painesdale and south. If not feasible a walking path within the utility right of way on Obenhoff Rd. And other roads where the traffic is above 45mph

pedal bike track

I can help out when my kids are older

Happy to volunteer! Can help build and support.

Promote the town's spotlight from 90s the hillclimb snowmobile-dirt bike it brings people in small towns to bars and Tena's restaurant village should help or purchase it to keep it in town and help out the streets on south range

Would love to have a walking/biking path from the old highway around to the new highway

Green spaces within the neighborhoods with access for physically disabled residents, dog parks, neighborhood gardens, volunteer to fix up elderly residents yards, community rummage sales, food trucks, bussing to town and back or delivery services, raffles, music, craft nights all with ride services for free or low cost

Bike paths/trails would be awesome to develop!

The F Biden sign on the house near the playground is a deterrent.

Thank you, long overdue

We already have a lot of these in the township. Where would you put these up?

Need something, anything in the township towns for recreation even if it's just a park area that's child and pet friendly.

(fishing team) If there was interest I would absolutely love to help get this going. I met a coach of one of the high school fishing teams in Wausau, WI just a few days ago and wanted to bring this up- perfect timing that this survey came out. She would love to help expand the program. I know we would be able to get sponsors through bass pro shops, etc. easily- we are in the U.P. and it is a HUGE marketing opportunity for them. We would also be able to use Lake Perrault even more! It is also something you can do with or without other people.

Keep Agate Beach accessible

If ice skating is allowed, hockey should not be allowed. Hockey should be certain times only. The hockey players will take over a rink and everyone who's there to skate and enjoy it will be chased off the ice by the ones who want to play hockey.

A sledding hill would be nice for families. A skateboarding park would help.

Why do we have to drive to Stanton to watch high school baseball. Make a home field in the Range area.

possible activity center for kids

If I were young and had a family I'd love any of the above activities.

Get people to run the Baltic Ice Rink

Updating and taking better care of Atlantic Mine playground

Painesdale and Trimountain need something

Sidewalks! Atlantic Mine area, Obenhoff Rd, or a shoulder at least

We appreciate low taxes more than recreation

I think this survey is a good idea to find out what residents are interested in

Would be able to help build and work on what project board comes up with

A wooded single-track, foot traffic only, hiking trail

As an avid disc golfer I would love to see a disc golf course installed in Adams Township. They are relatively low cost installation and minimal upkeep, and it's a great sport for all age and skill levels. It is a rapidly growing sport nationwide. I have experience designing/installing disc golf courses, and would love to help with a project like that.

Dear sirs, Going forward, the Champion No. 4 mine shaft and adjoining properties could be a good area to develop. Please contact the Painesdale Mine & shaft for suggestions. The poor rock area for Champion No. 4 could be a great recreational site, after they finish removing the rock. Note: There used to be a small pond at that site. I could see an ice skating park/ ball field/ basketball court/ park in Seeberville.

I'd like to see the following considered. 1) since the shit creek between Baltic and So Range has been a run-off water ditch for nearly 50 years and no longer stinks and can support fish, I think the township should consider a walking path along its banks for people wanting to walk. Also it would be nice to set up a small fishing deck or bridge combined with a couple of aerating features in the water. Think giving the Copper Country Trout Unlimited a job to design a few small waterfalls (18") to create pockets for fish. None of this would inhibit water flow. Perhaps John Ohman from down on Elsie Rd. could help. 2) I'm stuck in fishing recreation. How about a small pier on Lake Perrault? I know it's hard to police the lake- but it would be very beneficial to have a small (4'x 16') pier to fish off of or to tie a canoe or small boat to. And how about a little gravel on the slope/ drive area up from the lake. I know it's left that way for speed control. 3) the railroad tracks (DNR trail) needs to be graded better so that older people who want to bicycle to the cemetery can not fall in the soft Sandy spots, nor have to work at avoiding the potholes and sewer man holes. This really only needs to be "better graded" to the cemetery. 4) Following that theme why not make a walking trail from there in the mowed area behind Petrilius' to M-26 that connects as a loop to the shit-creek. You

might even consider a walking connection south of Stanton Avenue that reconnects with the trail and park at the ball fields.

Combined
TOTALS-

Activity	Number 1	Number 2	Number 3	Number 4	Number 5
Baseball	III III (22) 8	IIII III (19) 10	IIII III (23) 10	IIII I (15) 6	IIII III (32) 15
Basketball	IIII III (26) 9	IIII III (18) 9	IIII III (31) 14	IIII I (10) 7	IIII III (27) 13
Bicycling	IIII III (30) 29	IIII III (20) 8	IIII III (25) 12	IIII I (8) 3	IIII III (21) 9
Birds	IIII I (20) 6	IIII I (16) 6	IIII I (25) 10	IIII I (7) 5	IIII III (16) 26
Disc Golf	IIII I (19) 5	IIII I (13) 3	IIII I (28) 7	IIII I (13) 8	IIII III (36) 21
Hiking	IIII III (55) 28	IIII III (19) 10	IIII III (20) 10	IIII I (12) 6	IIII III (14) 14
Hockey	IIII III (34) 14	IIII I (10) 2	IIII III (28) 9	IIII I (13) 8	IIII III (25) 14
Horseshoes	II (8) 2	IIII I (17) 5	IIII III (36) 14	IIII I (11) 6	IIII III (35) 18
Ice Skating	IIII III (48) 24	IIII III (19) 10	IIII III (27) 15	IIII I (10) 5	IIII I (12) 6
Picnic area	IIII III (37) 16	IIII III (26) 14	IIII III (34) 9	IIII III (14) 9	IIII III (13) 4
Pickleball	IIII I (16) 5	IIII I (17) 8	IIII III (25) 9	IIII I (12) 8	IIII III (44) 22
Playgrounds	IIII III (53) 28	IIII I (36) 11	IIII I (18) 7	IIII I (11) 5	IIII I (13) 7
Rollerblading	IIII I (20) 6	IIII I (15) 6	IIII I (33) 12	IIII I (10) 10	IIII III (25) 13
Jogging	IIII III (35) 14	IIII III (15) 8	IIII III (25) 10	IIII I (9) 4	IIII III (22) 8
Skiing	IIII III (33) 15	IIII III (18) 12	IIII III (33) 14	IIII I (14) 7	IIII III (20) 7
Shuffleboard	IIII I (14) 3	IIII I (16) 4	IIII I (20) 5	IIII I (13) 8	IIII III (13) 23
Snowshoeing	IIII III (19) 18	IIII III (27) 13	IIII I (22) 10	IIII I (11) 6	IIII III (17) 10
Soccer	IIII I (13) 3	IIII I (14) 5	IIII I (27) 8	IIII I (11) 6	IIII III (14) 23

Tennis
Volleyball

① Walking

Other

AGE	1	2	3	4	5	6	7	8	9	10	11	12	13	14	15	16	17	18	19	20	21	22	23	24	25	26	27	28	29	30	31	32	33	34	35	36	37	38	39	40	41	42	43	44	45	46	47	48	49	50	51	52	53	54	55	56	57	58	59	60	61	62	63	64	65	66	67	68	69	70	71	72	73	74	75	76	77	78	79	80	81	82	83	84	85	86	87	88	89	90	91	92	93	94	95	96	97	98	99	100																																																																																																																																																																																																																																																																																																																																																																																																																																																																																																																																																																																																																																																																																																																																																																																																																																																																																																																																																																																																																																																																																																																																																																																																																																																																																										
11	11	13	15	17	19	21	23	25	27	29	31	33	35	37	39	41	43	45	47	49	51	53	55	57	59	61	63	65	67	69	71	73	75	77	79	81	83	85	87	89	91	93	95	97	99	101	103	105	107	109	111	113	115	117	119	121	123	125	127	129	131	133	135	137	139	141	143	145	147	149	151	153	155	157	159	161	163	165	167	169	171	173	175	177	179	181	183	185	187	189	191	193	195	197	199	201	203	205	207	209	211	213	215	217	219	221	223	225	227	229	231	233	235	237	239	241	243	245	247	249	251	253	255	257	259	261	263	265	267	269	271	273	275	277	279	281	283	285	287	289	291	293	295	297	299	301	303	305	307	309	311	313	315	317	319	321	323	325	327	329	331	333	335	337	339	341	343	345	347	349	351	353	355	357	359	361	363	365	367	369	371	373	375	377	379	381	383	385	387	389	391	393	395	397	399	401	403	405	407	409	411	413	415	417	419	421	423	425	427	429	431	433	435	437	439	441	443	445	447	449	451	453	455	457	459	461	463	465	467	469	471	473	475	477	479	481	483	485	487	489	491	493	495	497	499	501	503	505	507	509	511	513	515	517	519	521	523	525	527	529	531	533	535	537	539	541	543	545	547	549	551	553	555	557	559	561	563	565	567	569	571	573	575	577	579	581	583	585	587	589	591	593	595	597	599	601	603	605	607	609	611	613	615	617	619	621	623	625	627	629	631	633	635	637	639	641	643	645	647	649	651	653	655	657	659	661	663	665	667	669	671	673	675	677	679	681	683	685	687	689	691	693	695	697	699	701	703	705	707	709	711	713	715	717	719	721	723	725	727	729	731	733	735	737	739	741	743	745	747	749	751	753	755	757	759	761	763	765	767	769	771	773	775	777	779	781	783	785	787	789	791	793	795	797	799	801	803	805	807	809	811	813	815	817	819	821	823	825	827	829	831	833	835	837	839	841	843	845	847	849	851	853	855	857	859	861	863	865	867	869	871	873	875	877	879	881	883	885	887	889	891	893	895	897	899	901	903	905	907	909	911	913	915	917	919	921	923	925	927	929	931	933	935	937	939	941	943	945	947	949	951	953	955	957	959	961	963	965	967	969	971	973	975	977	979	981	983	985	987	989	991	993	995	997	999	1001	1003	1005	1007	1009	1011	1013	1015	1017	1019	1021	1023	1025	1027	1029	1031	1033	1035	1037	1039	1041	1043	1045	1047	1049	1051	1053	1055	1057	1059	1061	1063	1065	1067	1069	1071	1073	1075	1077	1079	1081	1083	1085	1087	1089	1091	1093	1095	1097	1099	1101	1103	1105	1107	1109	1111	1113	1115	1117	1119	1121	1123	1125	1127	1129	1131	1133	1135	1137	1139	1141	1143	1145	1147	1149	1151	1153	1155	1157	1159	1161	1163	1165	1167	1169	1171	1173	1175	1177	1179	1181	1183	1185	1187	1189	1191	1193	1195	1197	1199	1201	1203	1205	1207	1209	1211	1213	1215	1217	1219	1221	1223	1225	1227	1229	1231	1233	1235	1237	1239	1241	1243	1245	1247	1249	1251	1253	1255	1257	1259	1261	1263	1265	1267	1269	1271	1273	1275	1277	1279	1281	1283	1285	1287	1289	1291	1293	1295	1297	1299	1301	1303	1305	1307	1309	1311	1313	1315	1317	1319	1321	1323	1325	1327	1329	1331	1333	1335	1337	1339	1341	1343	1345	1347	1349	1351	1353	1355	1357	1359	1361	1363	1365	1367	1369	1371	1373	1375	1377	1379	1381	1383	1385	1387	1389	1391	1393	1395	1397	1399	1401	1403	1405	1407	1409	1411	1413	1415	1417	1419	1421	1423	1425	1427	1429	1431	1433	1435	1437	1439	1441	1443	1445	1447	1449	1451	1453	1455	1457	1459	1461	1463	1465	1467	1469	1471	1473	1475	1477	1479	1481	1483	1485	1487	1489	1491	1493	1495	1497	1499	1501	1503	1505	1507	1509	1511	1513	1515	1517	1519	1521	1523	1525	1527	1529	1531	1533	1535	1537	1539	1541	1543	1545	1547	1549	1551	1553	1555	1557	1559	1561	1563	1565	1567	1569	1571	1573	1575	1577	1579	1581	1583	1585	1587	1589	1591	1593	1595	1597	1599	1601	1603	1605	1607	1609	1611	1613	1615	1617	1619	1621	1623	1625	1627	1629	1631	1633	1635	1637	1639	1641	1643	1645	1647	1649	1651	1653	1655	1657	1659	1661	1663	1665	1667	1669	1671	1673	1675	1677	1679	1681	1683	1685	1687	1689	1691	1693	1695	1697	1699	1701	1703	1705	1707	1709	1711	1713	1715	1717	1719	1721	1723	1725	1727	1729	1731	1733	1735	1737	1739	1741	1743	1745	1747	1749	1751	1753	1755	1757	1759	1761	1763	1765	1767	1769	1771	1773	1775	1777	1779	1781	1783	1785	1787	1789	1791	1793	1795	1797	1799	1801	1803	1805	1807	1809	1811	1813	1815	1817	1819	1821	1823	1825	1827	1829	1831	1833	1835	1837	1839	1841	1843	1845	1847	1849	1851	1853	1855	1857	1859	1861	1863	1865	1867	1869	1871	1873	1875	1877	1879	1881	1883	1885	1887	1889	1891	1893	1895	1897	1899	1901	1903	1905	1907	1909	1911	1913	1915	1917	1919	1921	1923	1925	1927	1929	1931	1933	1935	1937	1939	1941	1943	1945	1947	1949	1951	1953	1955	1957	1959	1961	1963	1965	1967	1969	1971	1973	1975	1977	1979	1981	1983	1985	1987	1989	1991	1993	1995	1997	1999	2001	2003	2005	2007	2009	2011	2013	2015	2017	2019	2021	2023	2025	2027	2029	2031	2033	2035	2037	2039	2041	2043	2045	2047	2049	2051	2053	2055	2057	2059	2061	2063	2065	2067	2069	2071	2073	2075	2077	2079	2081	2083	2085	2087	2089	2091	2093	2095	2097	2099	2101	2103	2105	2107	2109	2111	2113	2115	2117	2119	2121	2123	2125	2127	2129	2131	2133	2135	2137	2139	2141	2143	2145	2147	2149	2151	2153	2155	2157	2159	2161	2163	2165	2167	2169	2171	2173	2175	2177	2179	2181	2183	2185	2187	2189	2191	2193	2195	2197	2199	2201	2203	2205	2207	2209	2211	2213	2215	2217	2219	2221	2223	2225	2227	2229	2231	2233	2235	2237	2239	2241	2243	2245	2247	2249	2251	2253	2255	2257	2259	2261	2263	2265	2267	2269	2271	2273	2275	2277	2279	2281	2283	2285	2287	2289	2291	2293	2295	2297	2299	2301	2303	2305	2307	2309	2311	2313	2315	2317	2319	2321	2323	2325	2327	2329	2331	2333	2335	2337	2339	2341	2343	2345	2347	2349	2351	2353	2355	2357	2359	2361	2363	2365	2367	2369	2371	2373	2375	2377	2379	2381	2383	2385	2387	2389	2391	2393	2395	2397	2399	2401	2403	2405	2407	2409	2411	2413	2415	2417	2419	2421	2423	2425	2427	2429	2431	2433	2435	2437	2439	2441	2443	2445	2447	2449	2451	2453	2455	2457	2459	2461	2463	2465	2467	2469	2471	2473	2475	2477	2479	2481	2483	2485	2487	2489	2491	2493	2495	2497	2499	2501	2503	2505	2507	2509	2511	2513	2515	2517	2519	2521	2523	2525	2527	2529	2531	2533	2535	2537	2539	2541	2543	2545	2547	2549	2551	2553	2555	2557	2559	2561	2563	2565	2567	2569	2571	2573	2575	2577	2579	2581	2583	2585	2587	2589	2591	2593	2595	2597	2599	2601	2603	2605	2607	2609	2611	2613	2615	2617	2619	2621	2623	2625	2627	2629	2631	2633	2635	2637	2639	2641	2643	2645	2647	2649	2651	2653	2655	2657	2659	2661	2663	2665	2667	2669	2671	2673	2675	2677	2679	2681	2683	2685	2687	2689	2691	2693

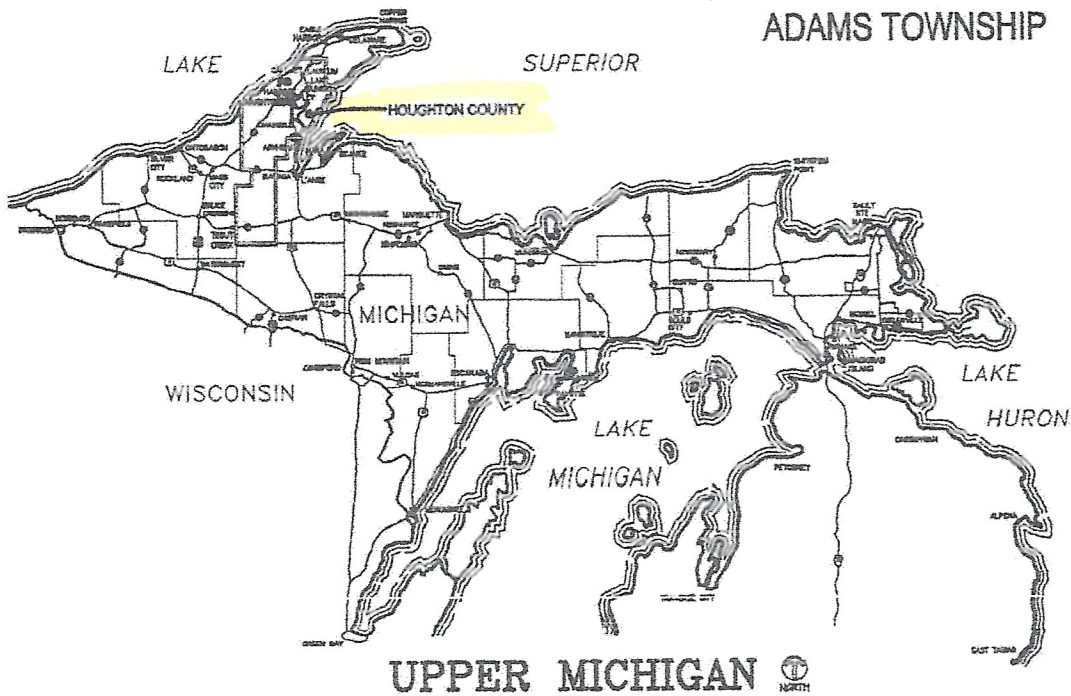
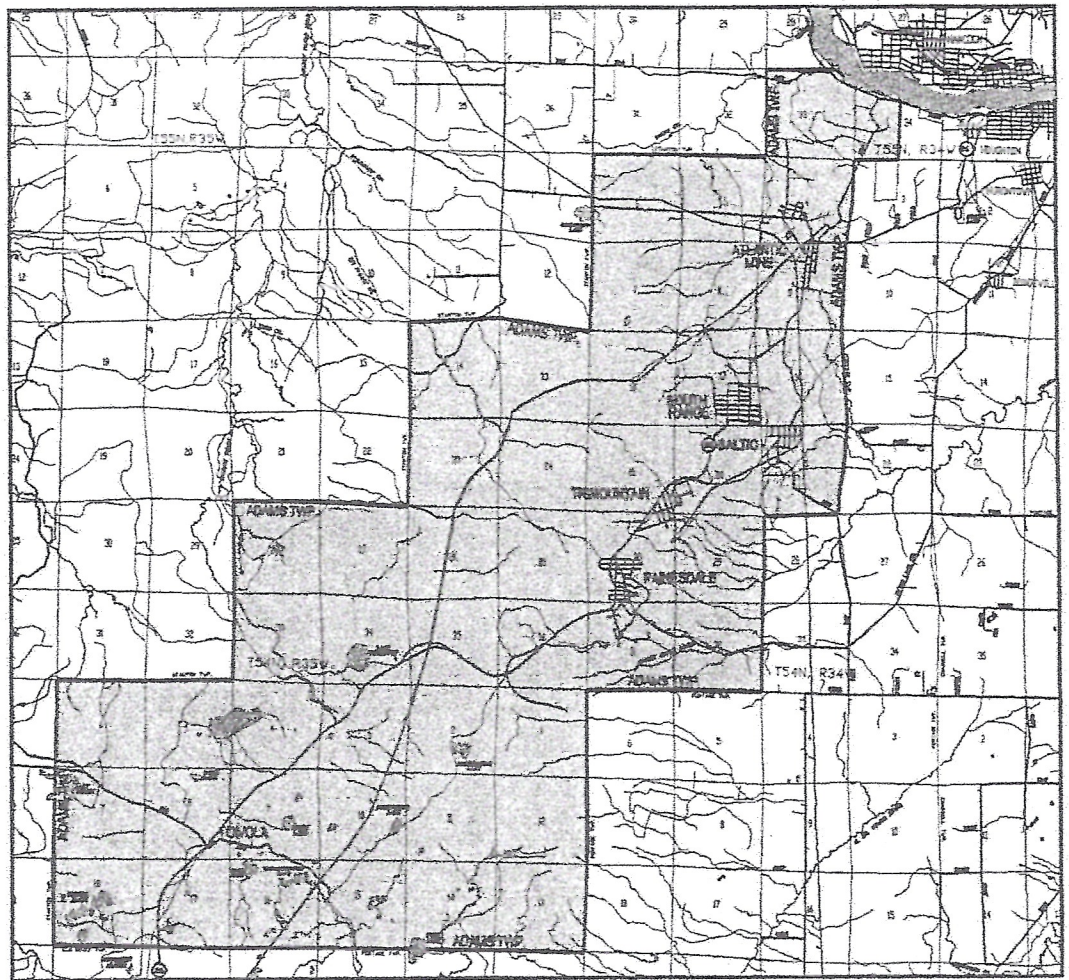
Additional Returns

Item	Column1	2	Column1	3	Column2	4	Column2	5	Column2
Baseball									
Basketball									
Bicycling	II	I		I		II		II	
Birds	I	I						II	
Disc Golf	I							II	
Hiking	I	II		I				I	
Hockey		I		II				II	
Horseshoes				I					
Ice Skating	III	I		I		II		I	
Picnic Grounds	I								
Pickleball		II		I				I	
Playgrounds	I			III				I	
Rollerblading	I			I				I	
Jogging				II				I	
Skiing	II	I		I				II	
Shuffleboard				I				I	
Snowshoeing	I			II				I	
Soccer								III	
Tennis	I			I				I	
Volleyball	I					II			
Walking	III			I				II	
Other									

UNDER 5 6-12 13-18 19-30 31-60 61+
 II I I I I
 III I I I I

Adams Township

Location Maps



U.P. ENGINEERS &
ARCHITECTS, Inc.

Houghton • Norway
Marquette • Sault Ste. Marie

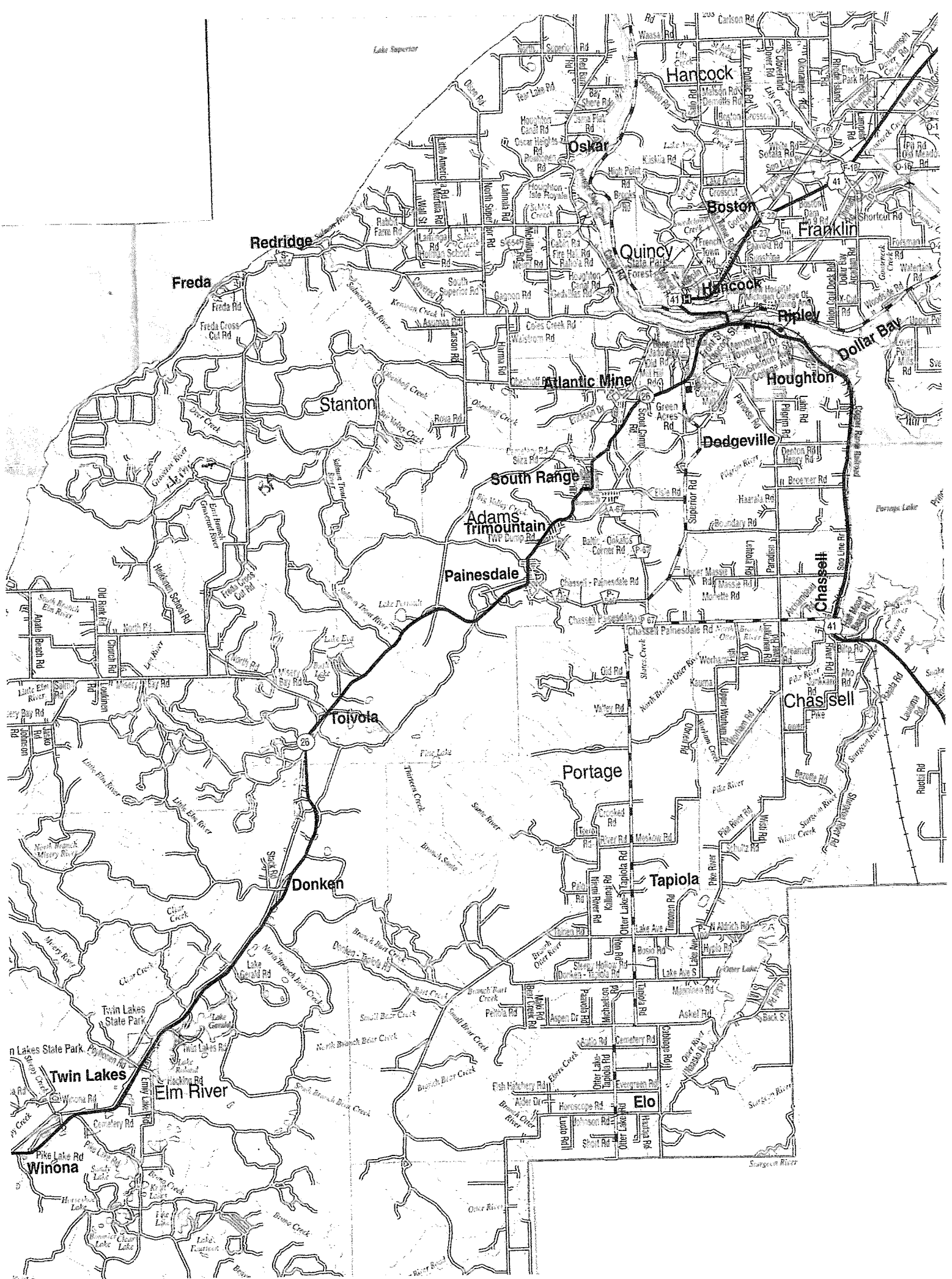
ADAMS TOWNSHIP LOCATION MAP HOUGHTON COUNTY MICHIGAN

DATE: 08-22-00 SCALE: N.T.S.

DRAWN BY: D.S.

PROJECT NO.: A07-99458

CAD FILE: A07-C1



Adams Township

Natural Resources Maps

LAKE SUPERIOR

A

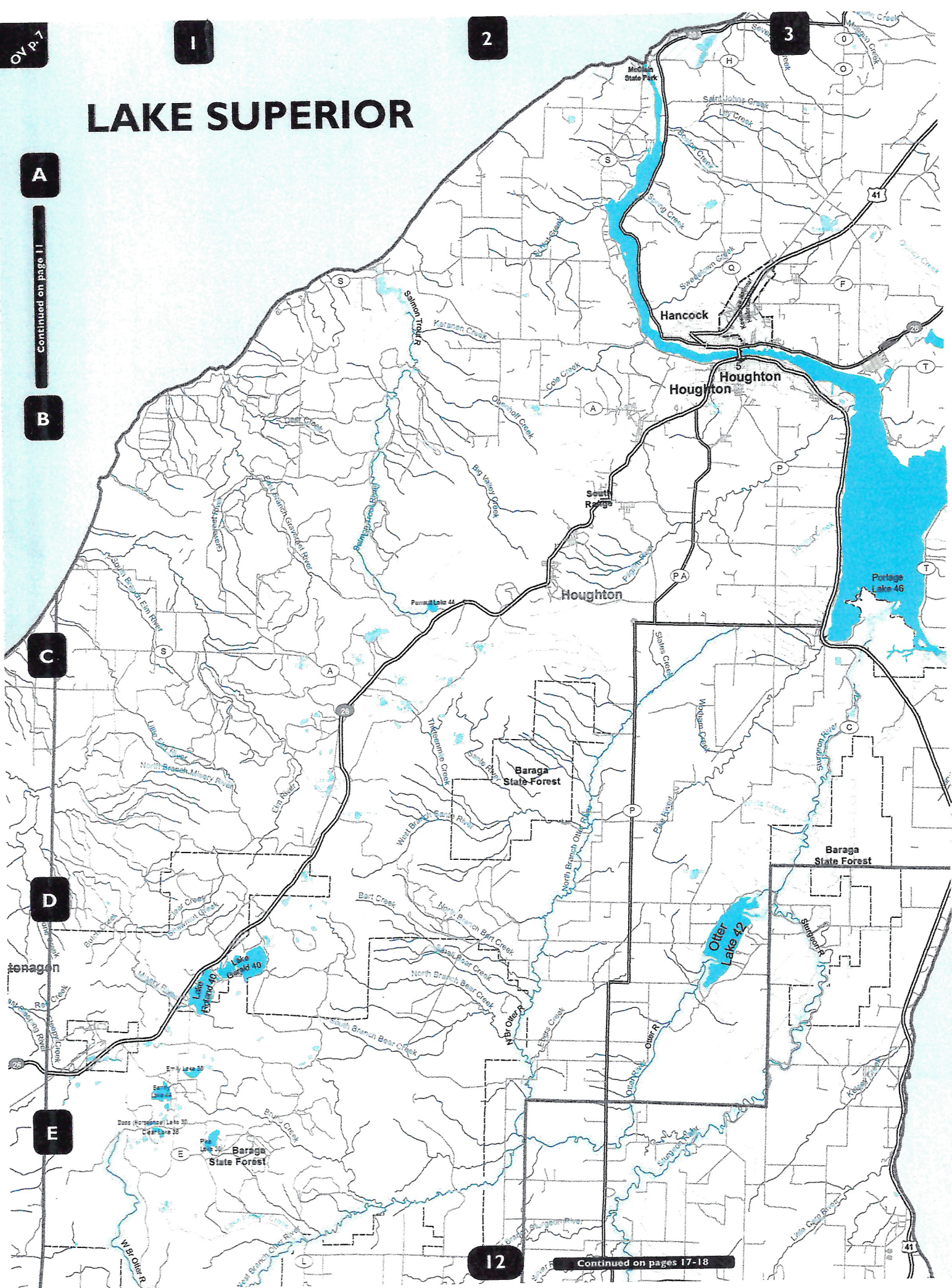
Continued on page 11

B

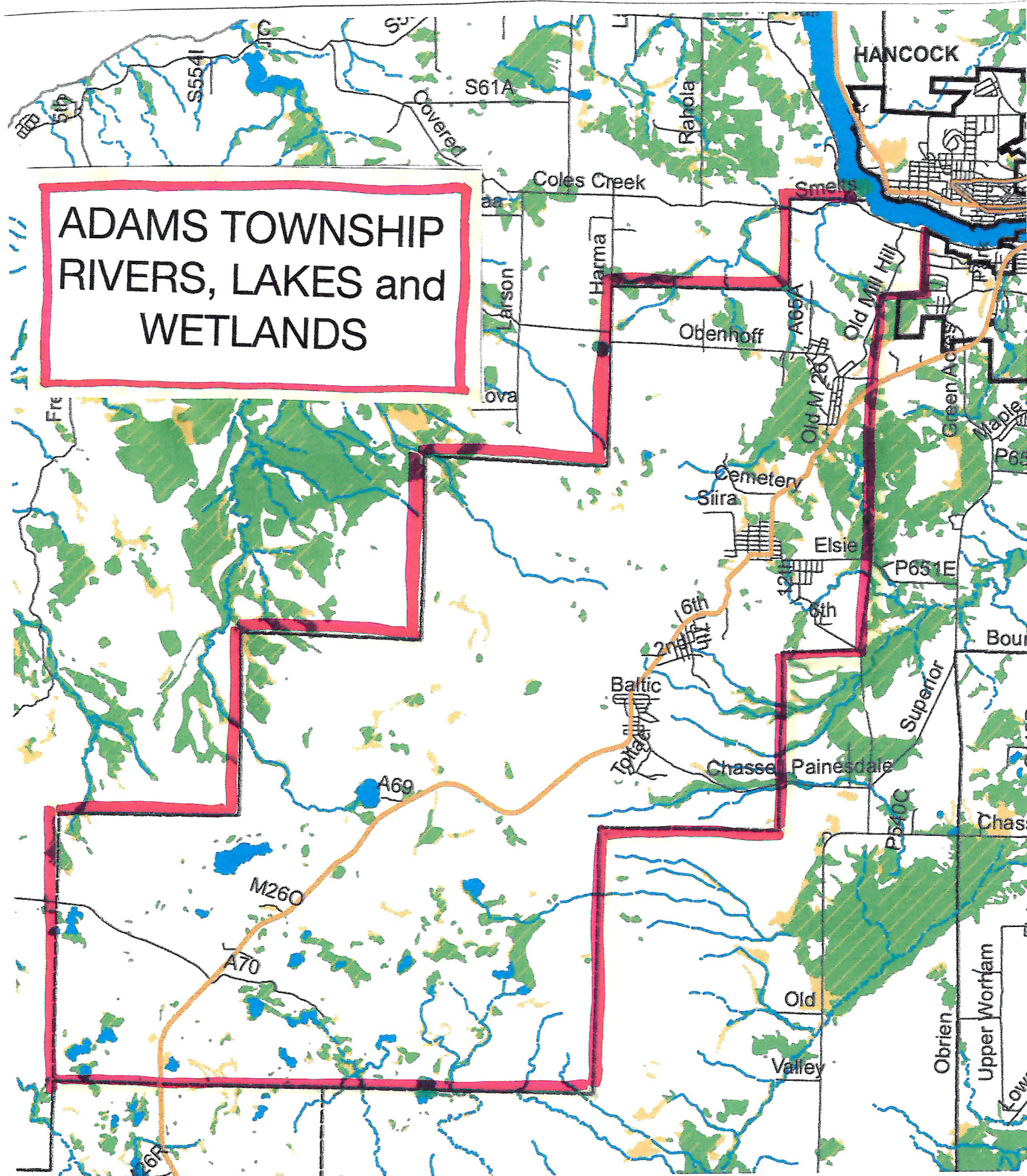
C

D

E



ADAMS TOWNSHIP RIVERS, LAKES and WETLANDS



Maps of Adams Township Recreation Areas

1) Baltic Recreation Center

1) Baltic Playground

2) South Range Elementary School Playground

2) Water Tower Trails

3) Atlantic Mine Playground

3) Pangrazzi Park, South Range

4) Painesdale Playground

**4) Painesdale Mine and Shaft
Champion #4 Shafthouse**

5) Trimountain

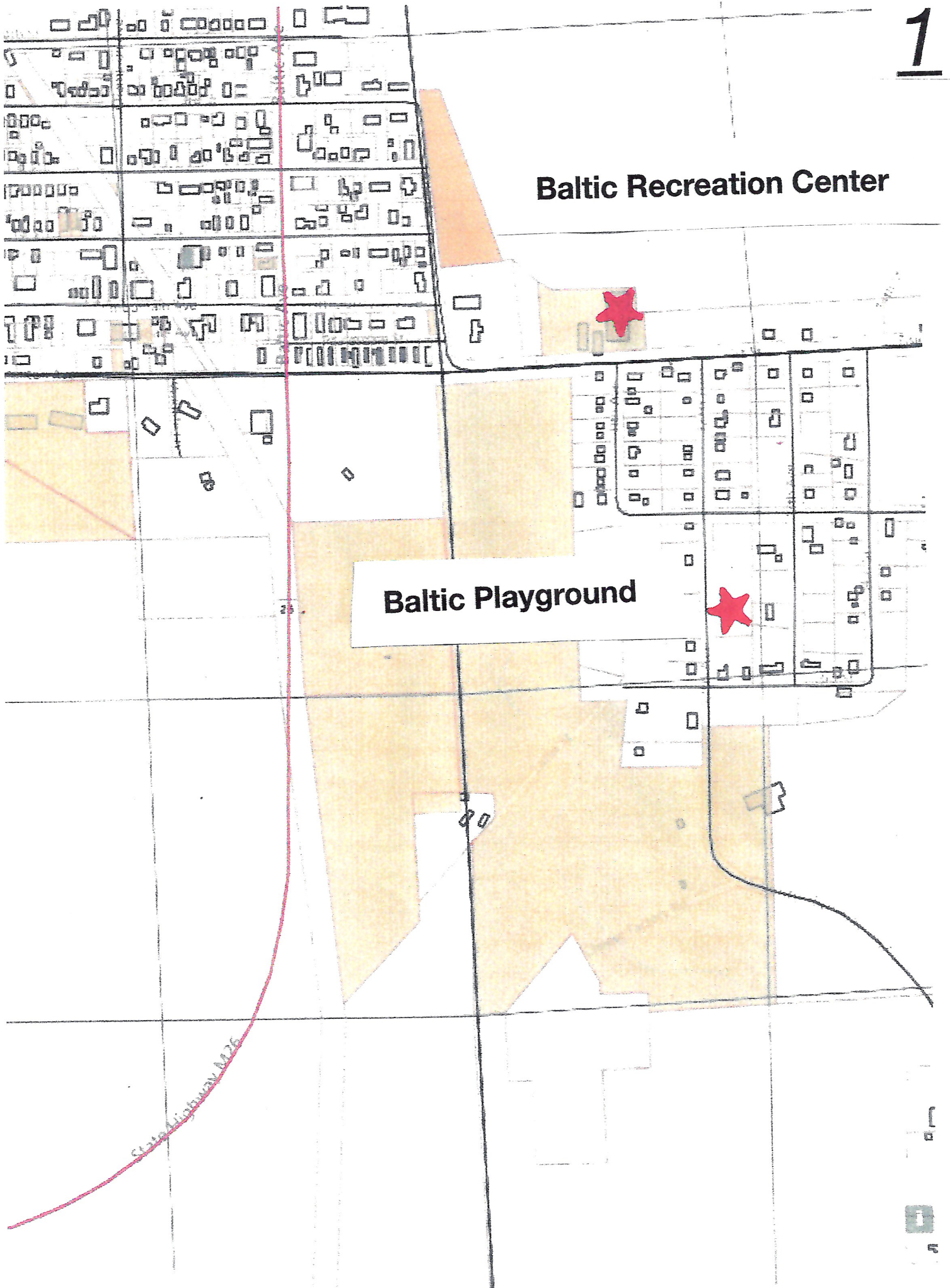
Baltic Recreation Center

Baltic Playground

County Highway M26

25

20



South Range Elementary School Playground

Water Tower Trails

20

State Highway M26

~~State Highway 1426~~



Atlantic Mine Playground



09

Atlantic Mine

Mill Mine Junction

16



Pangrazzi Park, South Range

Trimountain

