



VIEW TO DOWNTOWN LOS ANGELES



VIEW TO BANC OF CALIFORNIA STADIUM

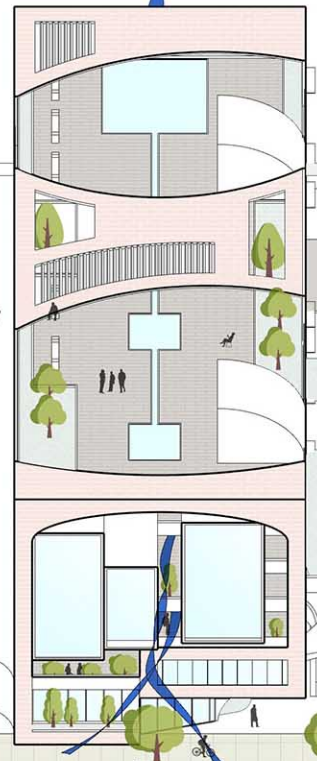


VIEW TO LA MEMORIAL COLISEUM

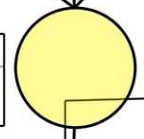


VIEW TO UNIVERSITY OF SOUTHERN CALIFORNIA

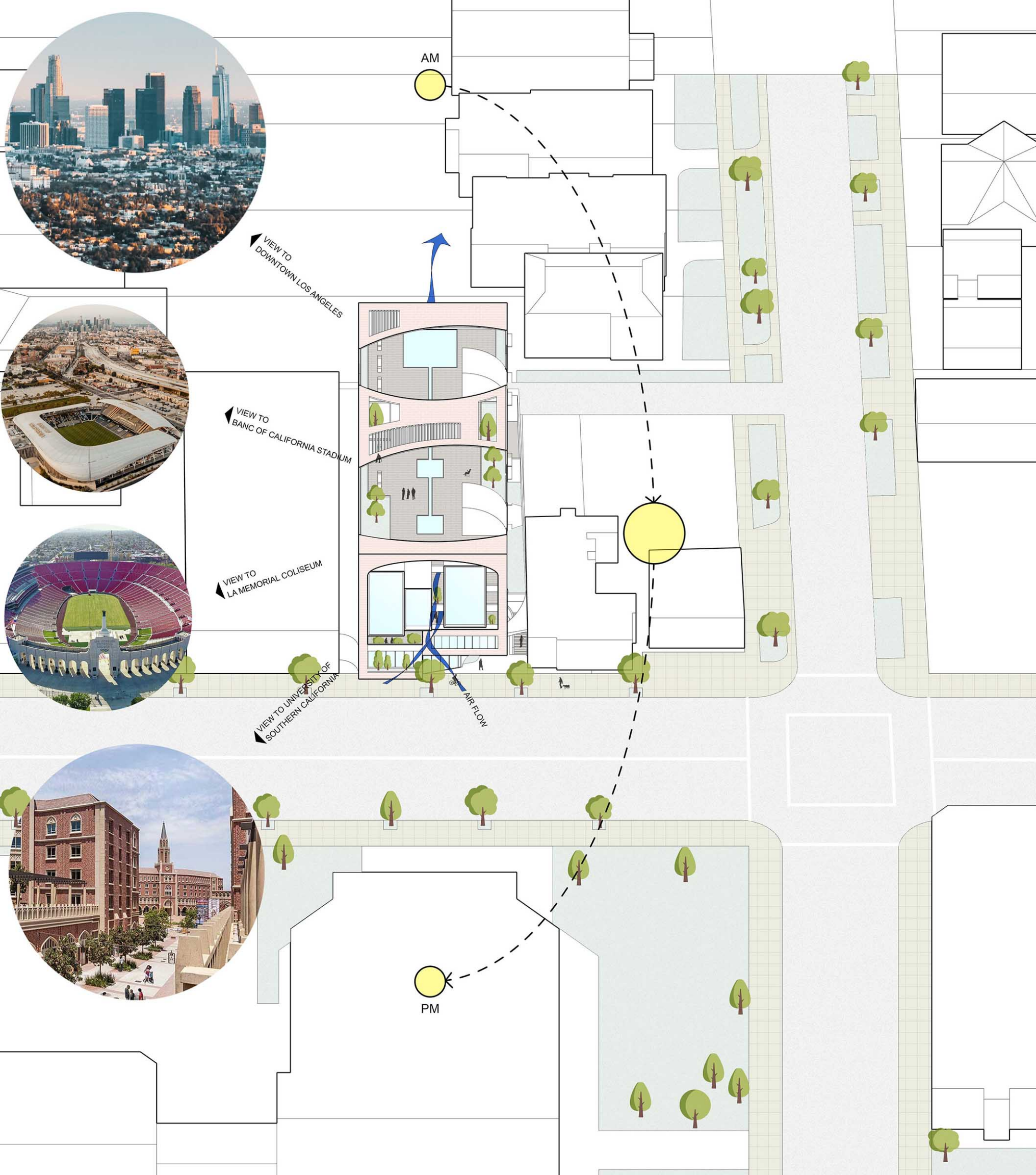
AM



AIR FLOW



PM











INSPIRATIONS



University of Southern California- Los Angeles.
Inspiration of the brick material.



Taq Kasra in Iraq.
Inspiration of the arch.



Fin Garden in Iran.
Inspiration of the roof garden.

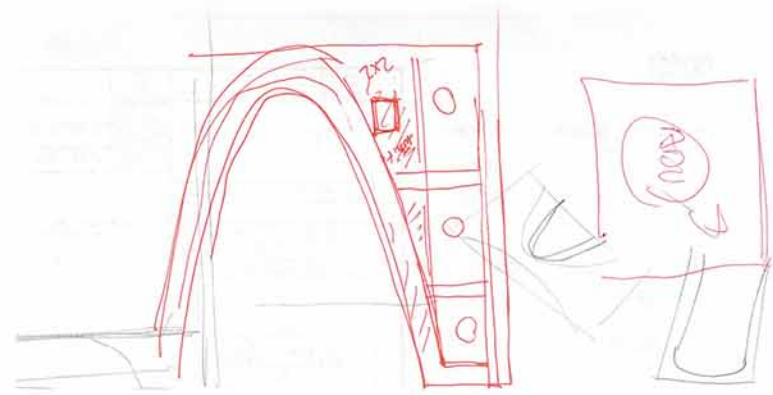


Wind towers of Yazd in Iran.
Inspiration of the staircase.

SITE PLAN

52 UNIT OF PERMANENT SUPPORTIVE HOUSING FOR DISABLED VETERANS

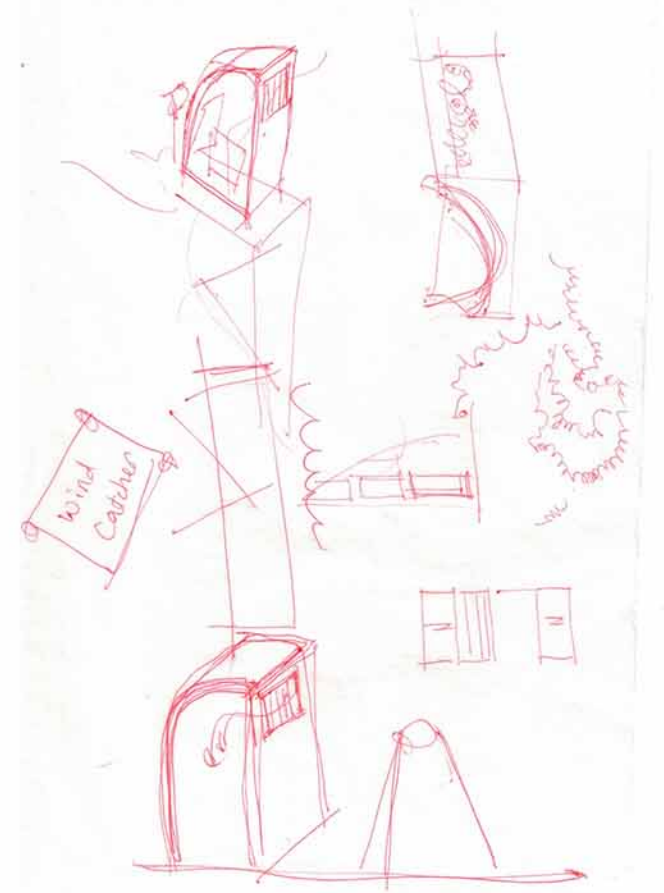
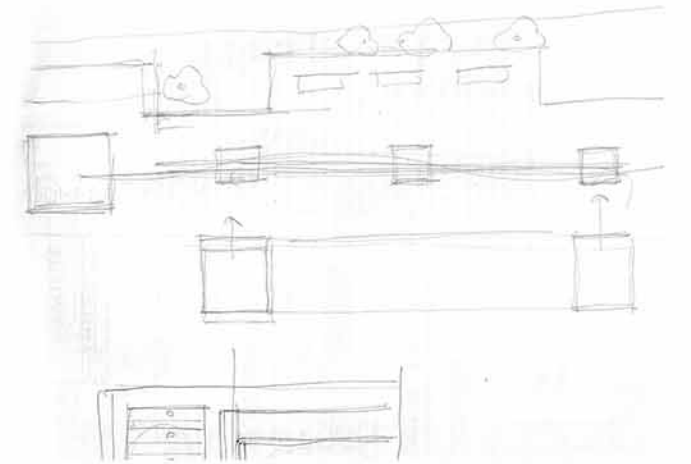
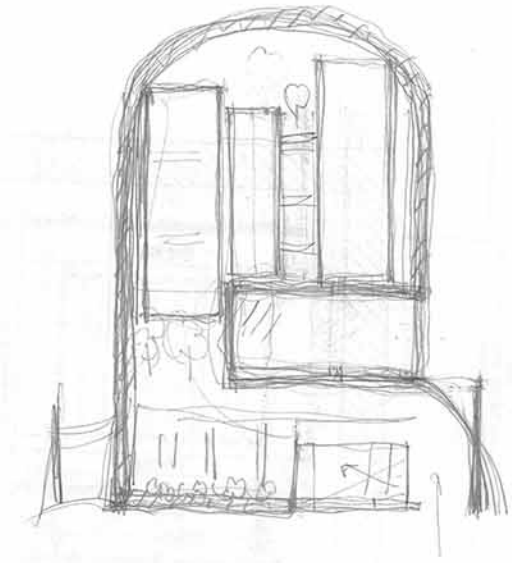
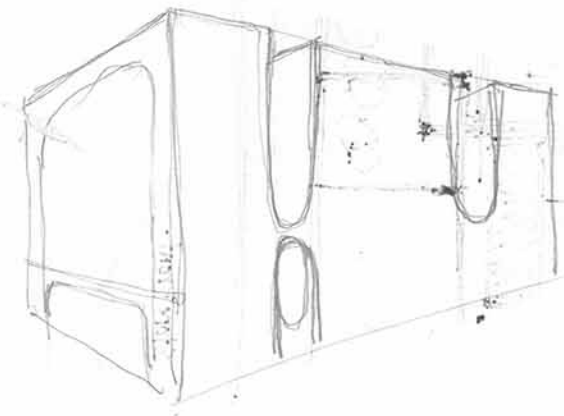
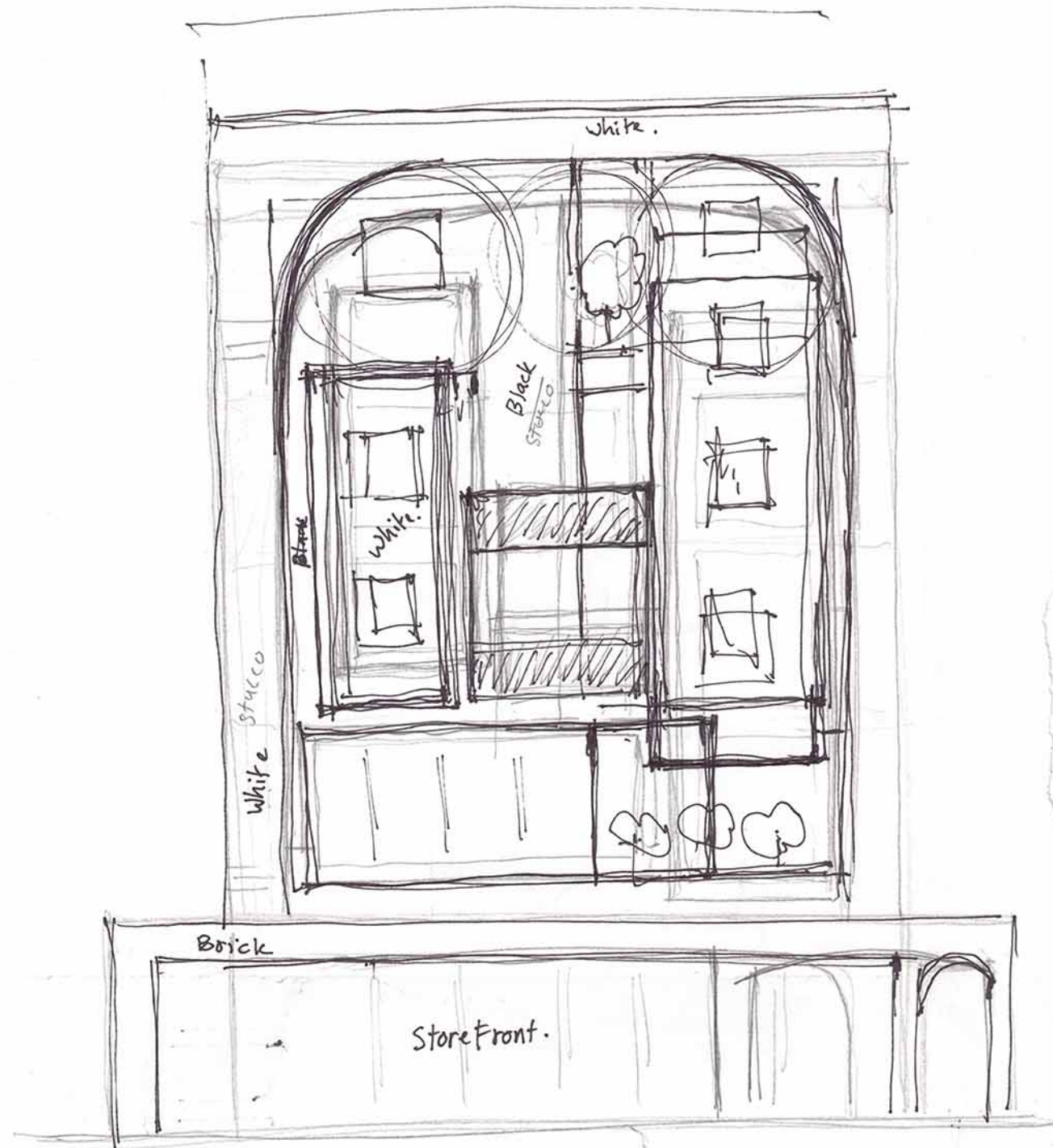
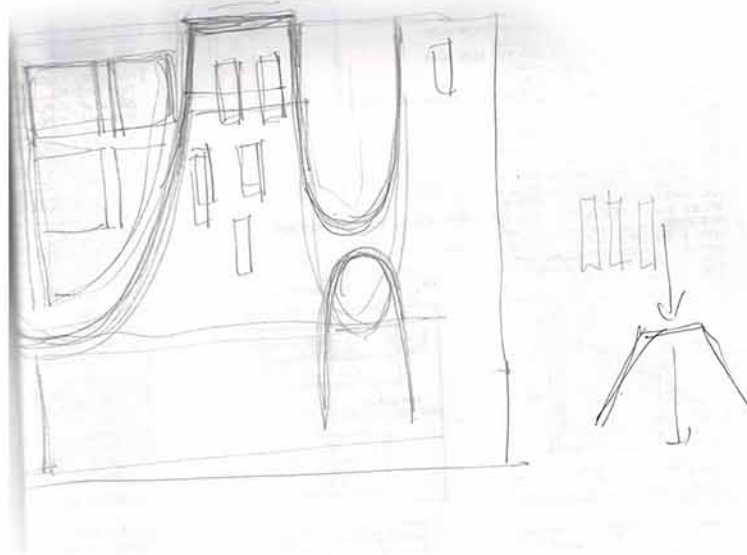




→ R&R (name)

Concept : → Design (Mixture of Past + Future)

- 1/ R&R (Rest & Recuperation) in Military.
- 2/ Taq Kasra (Iraq) : keeps connection with some portion of the past of Veterans of Iraq war. (Using Arch + Brick).
- 3/ USC : Influence of the most famous adjacent monuments of the city on the design. (Using Brick + Contemporary design).
- 4/ Design is a mixture of the past + Present of Veteran's life (Eastern + Western World Architecture).
- 5/ Down Town LA (Exposition Park & stadiums, ...)
- 6/ Middle Eastern Ancient Landscaping (Charbagh on Roof top).
- 7/ Middle Eastern Windcatchers. (Monuments on stair cases).



Concept. ^{in military} → (Rest and recuperation)
 keep connection with the some portion of the past (Arch + Brick) Mixing it with the most famous adjacent Monument of the city (USC) and also connection with



4TH FLOOR



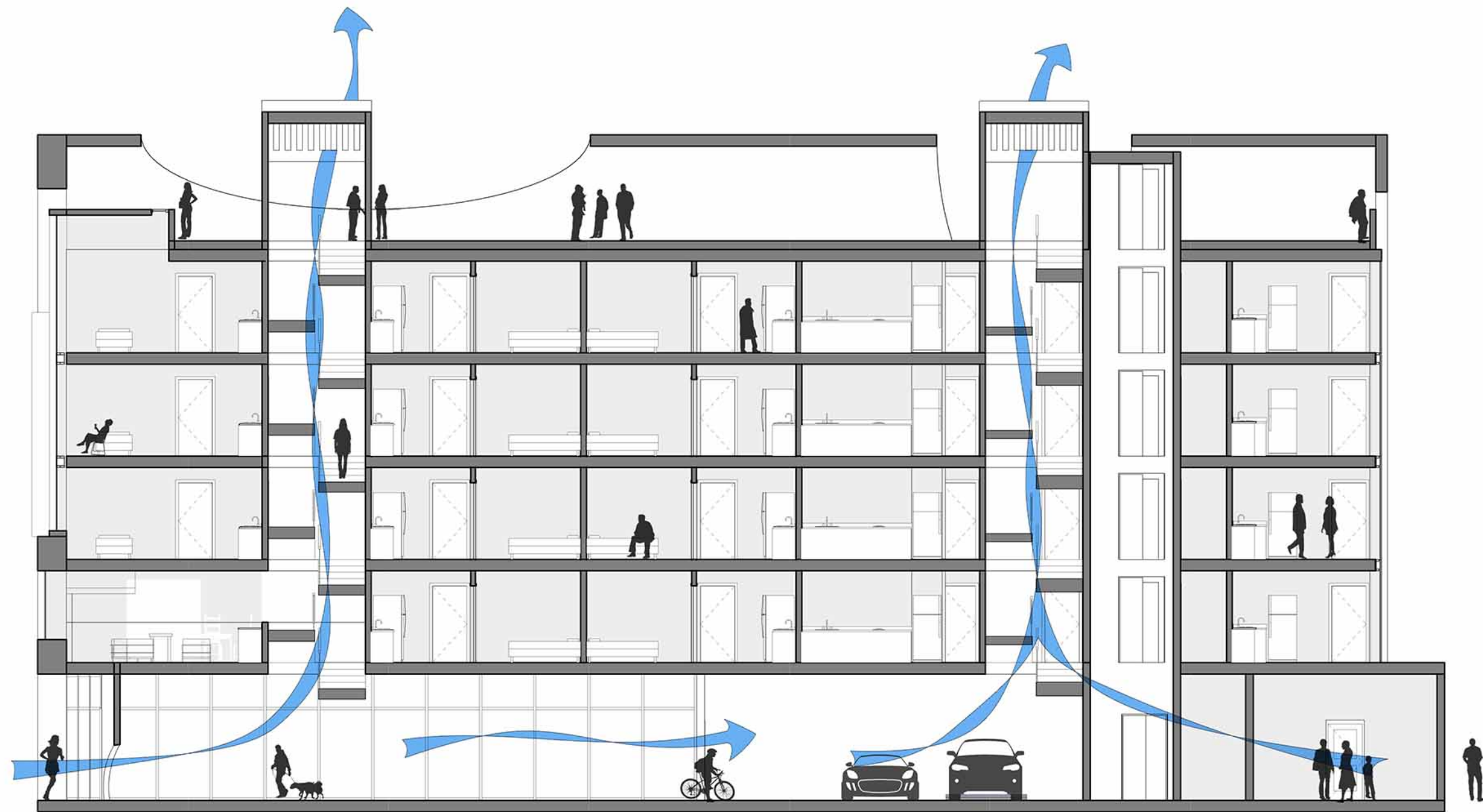
- 1 Studio
- 2 One-bedroom Unit
- 3 Two-bedroom Unit



2ND FLOOR



- 1 Recreation room
- 2 Open deck
- 3 Studio
- 4 One-bedroom Unit



SECTION

