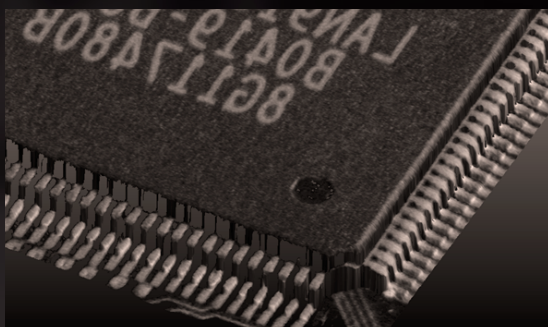




ECCO 75



### 3D GOES HD

HIGH DEFINITION SENSORS OPEN UP  
RANGE OF NEW 3D APPLICATIONS

**HIGHEST RESOLUTION** IDENTIFY SMALLER DEFECTS  
**INCREASED ACCURACY** FOR PRECISE MEASUREMENT  
**MORE 3D POINTS/SEC** FOR FAST PRODUCTION LINES  
**LARGER FIELD OF VIEW** SCAN BIGGER OBJECTS

## MODEL

## ECCO 75.030

## ECCO 75.100

Field of view [mm]	near   <b>mid</b>   far	34   <b>36</b>   38	72   <b>98</b>   124
Measurement range [mm]		16	100
Stand-off distance [mm]		60	150
Typical vertical resolution [ $\mu\text{m}$ ]		1.4 – 1.8	5 – 12
Typical lateral resolution [ $\mu\text{m}$ ]		18 – 20	42 – 70
Weight		Approx. 480 g	Approx. 480 g
Part number		3.002.121	3.002.120

Maximum points / 3D profile	1920
Typical scan rate*	Approx. from 150 Hz up to 4 kHz
Interface	Gigabit Ethernet (1 Gbit/sec)
Inputs	4 x Inputs, 5 – 24 VDC Quadrature Encoder (AB-Channel, RS-422 standard)
Outputs	2 x Outputs, 24 VDC
Input voltage   Power	24 VDC, $\pm 15\%$ ripple   7.5 W
Laser wavelength	660 nm
Laser class	standard   optional
Maximum ambient light	10,000 lx
EMC test	as per EN 61 000-6-2, EN 61 000-6-4
Vibration / Shock test	as per EN 60 068-2-6, -27, -29, -64
Electrical safety	as per EN 61 010-1-3
Protection class	III, as per EN 61 040-3
Enclosure rating	IP65
Air humidity	Maximum 90%, non-condensing
Temperature	operation   storage
	0 – 40° C   -20 – 70° C

\* Scan rate is dependent on the configured field of view, measurement range & exposure time. The typical scan rate has been estimated with an exposure time of 1  $\mu\text{sec}$

