

PA800_VL210 Emergency down retrofit kit instructions

Revision: A

Date: 12/3/2018

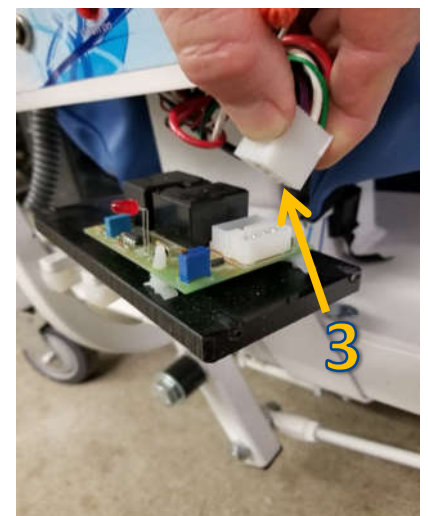
Tools you will need:

1. Philips screw driver
2. Flat screw driver
3. Pliers
4. Side cutter
5. 7/64 drill bit
6. Hand drill



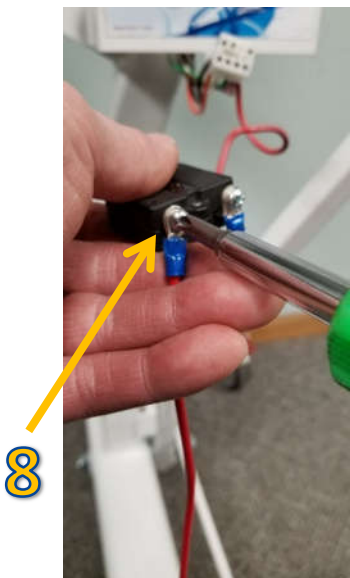
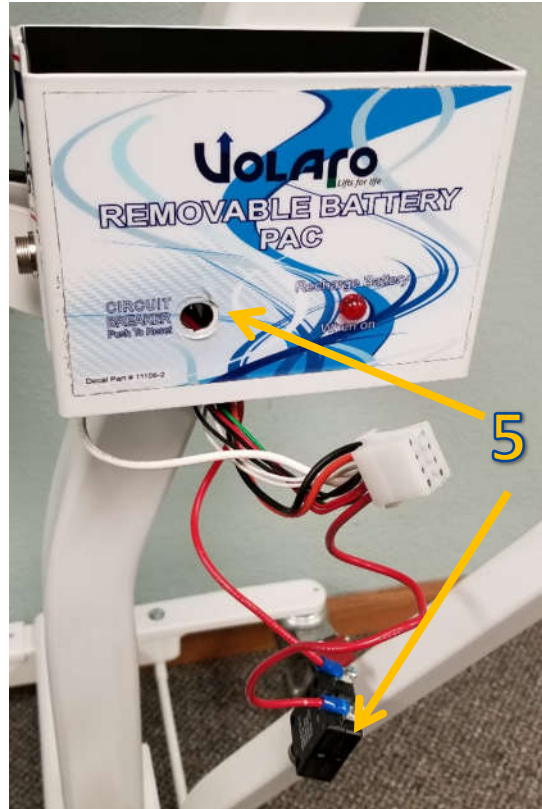
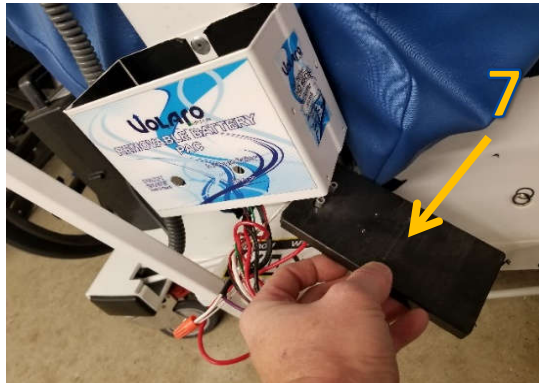
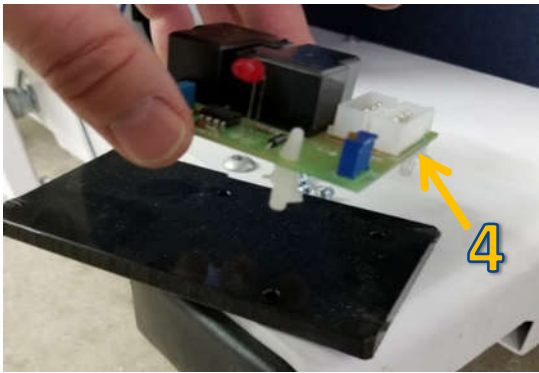
Disassembly:

1. Remove the 8 philips screws that hold the battery contact plate and the bottom plate in place.
2. Using a flat screw driver, pry down this side of the bottom plate.
3. Remove bottom plate from battery box and disconnect the connector from the circuit board.



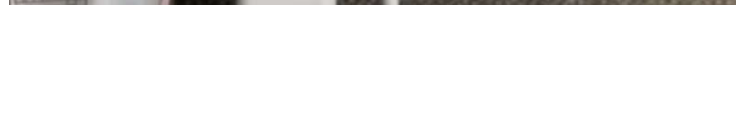
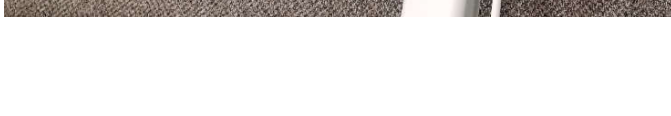
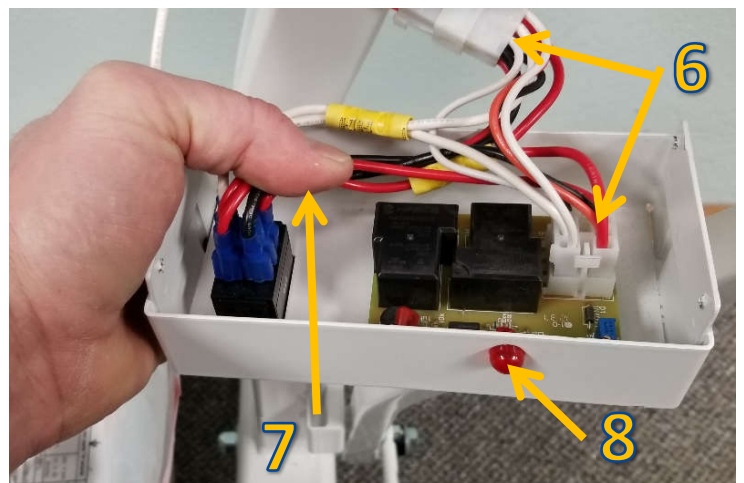
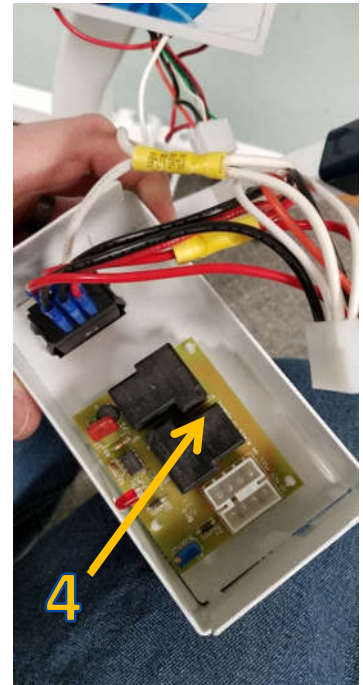
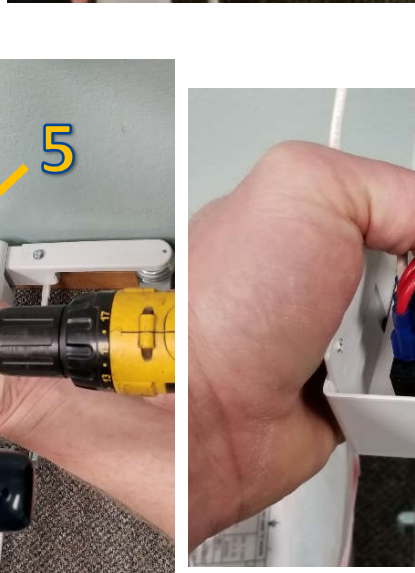
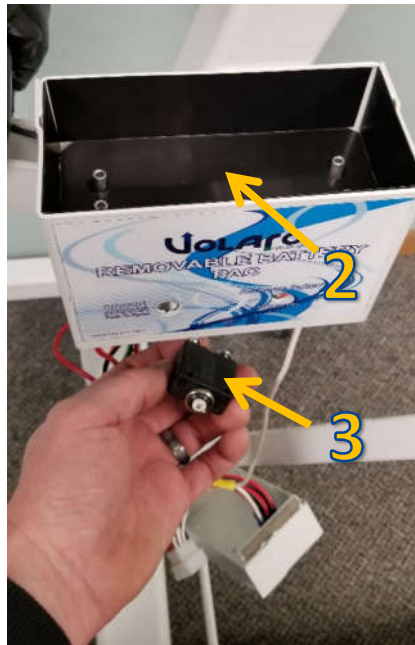
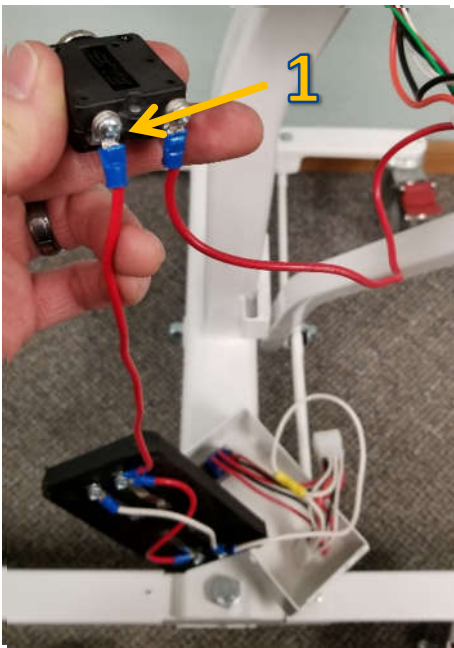
Disassembly:

4. Remove circuit board and install it on the bottom plate of the retrofit kit bottom plate.
5. Use pliers to remove the circuit breaker nut and pull the circuit breaker out the bottom.
6. Remove red plastic LED lens
7. Pull battery contact plate out bottom of battery box.
8. Remove battery contact plate red wire from circuit breaker screw terminal
9. Use side cutter to cut the battery contact plate white wire as close to the connector as possible.



Assembly:

1. Connect red wire from the retrofit kit to the screw terminal on the circuit breaker.
2. Pass the battery contact plate into place up from the bottom.
3. Reinstall the circuit breaker.
4. Reinstall the circuit board into the box extension. Align the 3 standoffs with the mounting holes and press into place.
5. Align the edges of the box extension with the battery box. Drill through the old contact plate holes into the box extension side plates in 4 places. Drill one hole, thread a screw in the hole, then drill the next hole etc. to maintain alignment.
6. Snap the electrical connectors into the circuit board connector and the existing harness connector.
7. Guide the wires as shown in figure 7 to allow clearance with the circuit breaker.
8. Make sure that the LED is lined up with the hole and reinstall the red plastic LED lens into the hole in the box extension.



Assembly:

9. Reinstall the 8 philips head screws.
10. Attach Emergency down switch decal as shown.
11. Attach new battery indicator decal as shown.

