

# **EXMOOR FARMERS LIVESTOCK AUCTIONS LTD.**

**BLACKMOOR GATE MARKET  
Near Barnstaple, North Devon EX31 4NW**

**MONDAY 18<sup>th</sup> October 2021**

**1755 SHEEP**

**SALE AT 10.30 am**

**Order of Sale**

**120 EWES (2T – GRAZERS)  
1600 STORE LAMBS  
35 RAMS**

**EXMOOR FARMERS LIVESTOCK AUCTIONS LTD.**

***Chartered Surveyors, Valuers, Land and Estate Agents***

**Cutcombe Market, Wheddon Cross, Minehead, Somerset**

**Tel: 01643 841841. Tel: Sale Day Only – 01643 841231**

**www.exmoorfarmers.co.uk e-mail: exmoorfarmers@btconnect.com**

## **CONDITIONS OF SALE AS EXHIBITED IN THE AUCTIONEERS' OFFICE**

**SIGNS:** Please obey all signs that are within the market. **PAYMENT:** On day of sale

**LICENCE:** Vendors please note you must bring a completed ARAMS form with your sheep. This market is subject to the movement rules as set by DEFRA  
*Could Vendors who are bringing less sheep than catalogued please inform us so we can re-use the pens.*

### **CLEANSING AND DISINFECTION:**

**Vendors:** DEFRA rules and regulations at time of sale will apply.

**Purchasers please note:** you must have a clean vehicle to take stock away with you.

Purchasers should bring their holding number with them. Vendors must bring their sheep movement document with them.

*All sheep to be penned and sorted by 10.00 am please.*

### **BEDDING IN PENS**

As all sheep go through the sale rings, if vendors feel they must use bedding in the pens please use shavings, **NOT STRAW.**

### **CLOTHING**

Those wishing to enter the sheep pens should have robust footwear and be suitably dressed, preferably with leggings that are cleansable.

### **EID RECORDING**

We have purchased EID readers to use at our markets, to help provide vendors and purchasers with the eartags of EID identified sheep, however, we would point out that we are operating under the additional clauses to the National Conditions of Sale as recommended by the LAA as follows:

#### **6. Liability of the Auctioneers**

The Auctioneers shall not be liable in any way for any deficiencies in either the vendor's tagging of his sheep nor the reading equipment being used at the CPRC in accordance with the EID Regulations nor any reading or print out produced by the said equipment.

#### **10. Exclusion of Animals**

Any animal that is not accompanied by the correct paperwork or is not presented in all respects in compliance with either the EID or FCI Regulations as the case may be.

**Note:** Top Iron pens 123 - 262 hold 20 ewes per pen or 25 lambs. Pens 1 – 34 hold a minimum of 25 lambs per pen, 35 – 50 hold 40 lambs each, 51 – 118 hold a minimum of 25 lambs per pen. Pens 401-442 hold 20 Ewes or 25 lambs.  
All sheep to be sold through sale ring.

---

417	10 Suffolk x Mule Breeding Ewes	FM-BM
418	5 Mule Breeding Ewes	BM
<b>Heptavac P System.</b>		

**STORE LAMBS****BOTTOM PENS****BOTTOM RING**

**WG THORNE, SANDYWAY FARM, SOUTH MOLTON**

431-432            40 Store Lambs

**MR F WILLIS, NUTCOMBE FARM, COMBE MARTIN, ILFRACOMBE**

433            25 Texel x Store Lambs

**MR G SOUTH, WHEATLY FARM, HEALE, PARRACOMBE**

434            20 Texel x Store Lambs

435            10 Scotch Mule Wether Lambs

**M NICOL, COMERS FARM, COMERS LANE, COMBE MARTIN**

436-437            40 Store Lambs

**MESSRS PJ & J WEBBER, STEADWAY FARM, WHEDDON CROSS**

438-440            50 Store Lambs

**FA.**

**MESSRS J&C WEBBER, LITTLE SLADE, CUTCOMBE**

441            10 Lley n x Store Lambs

442            5 Suffolk x Store Lambs

**Ovivac P x2, mineral bolus (July), wormed (August).**

**MR BJ WOOLLACOTT, OAREFORD, BRENDON, LYNTON**

3            50 Store Lambs

**FA.**

**MR I NICHOLLS, WHITE HOUSE, EXFORD, MINEHEAD**

4            50 Store Lambs

**MESSRS HG BISHOP & SON, LOWER COURT FARM, TREBOROUGH**

5-6            40 Store Lambs

**MR S MCCRACKEN, HOME FARM, LITTLE BRAY, BRAYFORD**

7-8            40 Store Lambs

**FA.**

**MR JE PETHERICK, HIGHER HEALE FARM, PARRACOMBE**

9            20 Store Lambs

**FA.**

**MESSRS WINGATE PARTNERSHIP, WINGATE FARM,  
COUNTISBURY**

10-11                      30 Store Lambs

**MR C RAFFE, PULWORTHY FARM, MOLLAND, SOUTH MOLTON**

12-14                      50 Store Lambs

**FA. Multi Vit bolus 10<sup>th</sup> August, Cydectin Triclamox 10<sup>th</sup>  
September, out of withdrawal 12<sup>th</sup> October.**

**MR M JONES, LOWER HOUSE, TWITCHEN, SOUTH MOLTON**

15-16                      40 Store Lambs

**FA. Ovivac P x2.**

**MESSRS COOMBE FARM PARTNERSHIP, COOMBE FARM, EXFORD**

17-22                      100 Store Lambs

**FA.**

**MESSRS JR & IF THOMAS & SON, HIGHER WESTLAND,  
KENTISBURY**

23-24                      40 Store Lambs

**MESSRS AT TARR & SON, LOWER HUNTSTONE, NORTH MOLTON**

25-26                      40 Store Lambs

**Bolussed mid August.**

**MESSRS JW & JW STANBURY, PARK FARM, LYNTON**

27-30                      80 Store Lambs

**FA.**

**MR RI CROCOMBE, DEAN FARM, LYNTON**

31                          20 Store Lambs

**Ovivac P x2.**

**MESSRS SR & DW HUXTABLE, SAFFORDLANDS, EAST DOWN**

32                          10 Store Lambs

**MR A NEEDHAM, GREENACRES, SHIRWELL, BARNSTAPLE**

33                          10 Store Lambs

**MESSRS GR & PJ KELLAWAY, BEARA, BRATTON FLEMING**

34                          10 Store Lambs

**MESSRS EM SCHOFIELD & PARTNERS, NORTH HAWKWELL,  
WHEDDON CROSS**

35-36                      60 Texel x Store Lambs  
**FA.**

**MESSRS FH & UM PARKER, QUICKS FARM, HIGH BICKINGTON**

37-38                      40 Store Lambs  
**Ovivac P x2.**

**MESSRS D&M RIDD & SON, WESTMEAD, CHALLACOMBE**

39-41                      80 Store Lambs  
**FA. Ovivac P x2.**

**MR C GOVIER, EASTMOOR VIEW, UPTON, TAUNTON**

44-46                      50 Store Lambs  
**FA. Ovivac P x2.**

**MESSRS M&B CAREY, ASHCOMBE, WINSFORD, MINEHEAD**

47-49                      100 Store Lambs

**MR R FLOYD, LEEFORD, BRENDON, NORTH DEVON**

50                          30 Store Lambs

**MRS J WADY, HIGHER BROWN FARM, HUISH CHAMPFLOWER**

51-52                      30 Store Lambs

**MESSRS WJ BURGE & SON, OAREMEAD, BRENDON**

53-55                      60 Store Lambs  
**FA.**

**MR R GREED, SANNACOTT FARM, NORTH MOLTON**

56-57                      40 Store Lambs  
**FA.**

**MESSRS P&O JEMMISON, WHITEFIELD FARM, BRAYFORD**

58-60                      60 Store Lambs  
**Drenched 1<sup>st</sup> October with Noromectin.**

**MESSRS A&P TAPP, HIGHER NORTH HEASLEY FARM, HEASLEY  
MILL, SOUTH MOLTON**

61-62                      40 Texel x Store Lambs  
FA.

**MR ADG JONES, CHEZ NOUS, DULVERTON**

63                      20 Store Lambs

**MRS A NATION, CHURCH FARM, STOKE PERO, PORLOCK**

64                      20 Herdwick Store Lambs

65                      8 Herdwick Ewe Lambs

66                      5 Cheviot Store Lambs

**MESSRS S&D WILSON, WEST MILL FARM, BISHMILL**

67                      20 Store Lambs

**MR R RICHARDS, SILCOMBE FARM, PORLOCK, MINEHEAD**

68-70                      60 Store Lambs

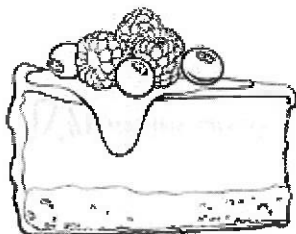
**MESSRS EC FARMS, EAST CHALLACOMBE, COMBE MARTIN**

71-72                      40 Store Lambs

**73 onwards              Extra Store Lambs**

## **CAKE STALL**

In aid of Macmillan Cancer Support



**Monday 18<sup>th</sup> October**

**Blackmoor Gate Market    10am onwards**

Angie Andrews & Alison Habberfield  
will be running the stall at each event.

**RAMS****BOTTOM PENS****BOTTOM RING****MR J EDWARDS, BOWLING GREEN FARMS, YARNSCOMBE**

301-307 7 Charollais 2T Rams

Pen 391 **FA. Heptavac P+, Footvax.****MESSRS C&G MILLS, LOWER BATSCOMBE, FARM, RADDINGTON**

308 1 Exmoor Horn FM Ram

**Bred by AJ Tarr.**

309 1 Purebred Exmoor Horn 2T Ram

Pen 392

**MR F REED, HUNNIWINS, NORTH MOLTON**

310-313 4 Texel 2T Rams

Pen 393

**MESSRS D&J BAKER, ORCHARD FARM, YARNSCOMBE**

314-319 6 Charollais 2T Rams

Pen 394 **Heptavac P System.****MR MJ MOORE, FROXTON FARM, WHITSTONE, HOLSWORTHY**

320 1 Aberfield 4T Ram

321-322 2 Aberfield 2T Rams

323-325 3 Texel 2T Rams

Pen 395

**MRS F COX, COPHOLE FARM, BROMPTON REGIS**

326-333 8 Bluefaced Leicester x Texel 4T-6T Rams

Pen 396

**MR R RICHARDS, BAMPFYLDE HILL, HEASLEY MILL, SOUTH MOLTON**

334-335 2 Bluefaced Leicester 2T Rams

Pen 397

**MR BARRY NICHOLLS, WEST MIDDLETON FARM, PARRACOMBE**

336 1 Suffolk Ram

337-338 2 Bluefaced Leicester 2T Rams

Pen 398



HIGHER MELCOMBE, EXFORD, MINEHEAD, SOMERSET, TA24 7LU  
ON BEHALF OF MR JOHN & MR STEVE ATKINS & SURROUNDING FARMS

*In conjunction with Stags*



**FRIDAY 29<sup>TH</sup> OCTOBER**

**STARTING AT 10.30AM**



**SALE OF EXCAVATOR, 9 TRACTORS, UTILITY VEHICLES,  
TRAILERS, FARM MACHINERY, LIVESTOCK & GENERAL  
EQUIPMENT**

**EXCAVATOR & TRACTORS:** 2002 Case CX130 13 Tonne Excavator c/w 46" Bucket; 2007 John Deere 6930 Premium 4WD Tractor; Massey Ferguson 375 12/12 4WD Tractor; 1985 Massey Ferguson 699 4WD Tractor c/w MF Loader; Case International 885 4WD Tractor c/w Trima Loader; Ford 4610 4WD Tractor c/w Loader; Ford 4000 2WD Diesel Tractor; 1978 Leyland 262 2WD Diesel Tractor; Massey Ferguson 35 3 Cylinder Industrial Tractor c/w Front Loader & 5½' Bucket and Rear Digger; Fordson Super Major 2WD Tractor c/w Cooks 10 Tonne Winch; **LANDROVER & UTILITY VEHICLES:** Land Rover Defender; 2013 John Deere 855D Gator; 2012 Polaris Ranger 900cc; 2002 AIE 250cc Quad Bike; **TRAILERS:** 2009 Chieftain 24' Twin Tandem Axle Low Loader Trailer c/w Beaver Tail; 28' Tri Axle Livestock Trailer c/w sheep decks, sprung draw bar, hydraulic deck lift; 8T Twin Axle Tipping Grain Trailer; Equitrek 17' Tri-Axle Horse/Bike Trailer; Ifor Williams 12' Twin Axle Livestock Trailer c/w Partition Gate; Ifor Williams 10' Twin Axle Livestock Trailer c/w Wooden Sheep Decks; Ifor Williams 14' Twin Axle Flatbed Trailer c/w Sides; 2 Ifor Williams 12' Flatbed Trailers c/w Sides; Ifor Williams HB510R Twin Axle Horse Trailer; Ifor Williams Twin Axle Horse Trailer; Single Axle Tipping Trailer; **FARM MACHINERY:** 2003 McHale 995LT Square Bale Wrapper on Trailer c/w Engine; 2004 John Deere 328 Mower Conditioner; Lely 320MC Mower Conditioner; Kverneland MOD E Auto Reset 4 Furrow Reversible Plough; Heavy Duty 4.8M Folding Flail Topper; Teagle TFH-M 250 Flail Topper; Amazone ZA-M Novis 1500 Twin Disc Fertilizer Spreader; Teagle Tomahawk 8080 Trailer Bale Shredder; Maschio 6m Folding Power Harrow; Hydraulic Packer; KRN 3m Drillmate; 2 McConnel Rhino 9 Toppers; 2 McConnel Rhino 9 Toppers (S/R); Stanhay Precision Swede Drill; 48 Bale Carrier; PZ Haybob; Rolbalred 200H Snow Blower & Power Pack; KGD Forestry Winch; Fransgard Tractor Mounted Winch; Russell Flat 8 Bale Accumulator; Conventional Bale Elevator; **ATTACHMENTS:** Massey Ferguson 80 Loader; Digger Pecker; Double Bale Spike; 6' Bucket; Flat 8 Grab; **LIVESTOCK EQUIPMENT:** 2 Calf-Tel Plastic Calves Group Hutches; 2 2.9M x 1.5M Mobile Pig Feeders; Large Qty Gates; Qty Concrete Water Troughs; Qty Livestock Feeders & Other Equipment (Further Details to Follow); **GENERAL EQUIPMENT:** ATV Stock Wire Unroller Trailer; Honda Petrol Trailed Wood Chipper; 9' Cattle Grid; Various Workshop Tools & Equipment. **OUTSIDE ENTRIES:** John Deere 582 Belt Driven Round Baler; John Deere 991B Wrapper; John Deere 6310SE 4wd Tractor c/w Quicke 445 Loader; 6m Quantock Grass Harrows; Sheep Handling Trailer with hurdles etc; Protec P180 Post Banger extra hydraulic top link; Discovery Commerical TD5 2002 reg.

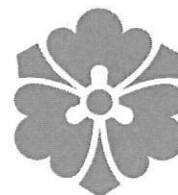
**VIEWING DAY: THURSDAY 28<sup>TH</sup> OCTOBER (1PM – 4PM)**

**OUTSIDE ENTRIES INVITED BY PERMISSION –**

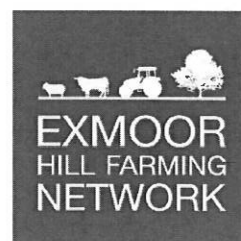
**Please don't hesitate to contact one of our team if you have any entries**

Full details, photos & videos can be found at: <https://www.exmoorfarmers.co.uk/farm-sales>

**ALL LOTS MUST BE REMOVED BY 5PM ON FRIDAY 5<sup>TH</sup> NOVEMBER**



THE PRINCE'S  
COUNTRYSIDE  
FUND



**Do you want to better understand the policy changes that will affect the future of your farm business?**

## **EXMOOR WELCOME MEETINGS**

**Tuesday 2nd November 7pm-9pm**  
**Exford Social Club, TA24 7PP**

**Monday 8th November 7pm-9pm**  
**Exford Social Club, TA24 7PP**

*Please note you only need to attend one welcome meeting*



**Sign up to a FREE programme of support to help you prepare your farm business for the upcoming changes, and receive the following, plus additional events and resources:**

**Business Workshop:** Understand and prepare your farm business for the changes to agricultural policies, including the removal of BPS.

**Environment Workshop:** Discover environmental opportunities within the ELM schemes that may suit and benefit your farm business.

**One-to-One Support:** Discuss future opportunities or challenges with your local coordinator to help you plan for the future.

## **Am I eligible?**

Any owner-occupied or tenant farm currently in receipt of BPS in England can take part.

## **How much will it cost?**

The programme is free and you can either attend in person or virtually.

## **How can I sign up?**

For more information and to express interest call **Exmoor Hill Farming Network** on **07970 795808 / 01643 841455** or email **katherine@ehfn.org.uk** or visit **[www.princescountrysidefund.org.uk/farmforthefuture](http://www.princescountrysidefund.org.uk/farmforthefuture)**



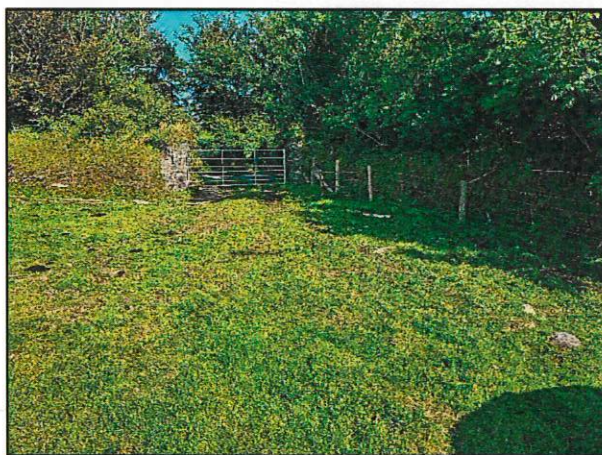
Department  
for Environment  
Food & Rural Affairs



# Exmoor Farmers Livestock Auctions Ltd

## FOR SALE BY PRIVATE TREATY

**40.25 ACRES OF PASTURE LAND AT YARDWELLS CROSS,  
NORTH MOLTON, SOUTH MOLTON, DEVON EX36 3HA**



**Guide Price:  
in excess of £275,000.00**



**Exmoor Farmers Livestock Auctions Ltd**  
Cutcombe Market, Wheddon Cross, Minehead, Somerset TA24 7DT  
Tel: 01643 841841 Email: [exmoorfarmers@btconnect.com](mailto:exmoorfarmers@btconnect.com)  
[www.exmoorfarmers.co.uk](http://www.exmoorfarmers.co.uk)



## 2021 SALES FIXTURES

### Cutcombe - Cattle

*Monday 1<sup>st</sup> November*

*Special Sale of STEER SUCKLED  
CALVES for ESCRA*

*Tuesday 2<sup>nd</sup> November*

*Special Sale of HEIFER SUCKLED  
CALVES for ESCRA*

*Monday 15<sup>th</sup> November*

*SUCKLED CALVES inc. NATIVE  
BREEDS, STORE CATTLE, COWS &  
CALVES*

*Monday 29<sup>th</sup> November*

*SUCKLED CALVES FOR ESCRA*

*Monday 13<sup>th</sup> December*

*followed by Store Cattle, Cows & Calves  
Store Cattle, Cows and Calves  
also Suckled Calves*

### Cutcombe - Sheep

#### Grazing/Killing Ewes, Prime/Store Lambs – Sale at 2.00 pm

*Wednesday 20<sup>th</sup> October*

*Wednesday 27<sup>th</sup> October      Also Special Store Lamb Sale*

*Wednesday 10<sup>th</sup> November*

*Wednesday 17<sup>th</sup> November      Also Special Store Lamb Sale*

### Blackmoor Gate

*Monday 25<sup>th</sup> October*

*Breeding Ewes, Rams, Store Lambs*

*Monday 8<sup>th</sup> November*

*Ewes, Store Lambs, Third Sale of Ewe Lambs*

*Monday 22<sup>nd</sup> November*

*Ewes, Store Lambs*

*Monday 6<sup>th</sup> December*

*Store Lambs, Ewes*

*Monday 20<sup>th</sup> December*

*Store Lambs, Ewes*

~~~~~  
ALL AUCTIONS ARE SUBJECT TO MOVEMENT RULES AS SET BY DEFRA  
COLLECTION EVERY WEEK – LAMBS AND CATTLE. TB RESTRICTED CATTLE COLLECTED  
TO SLAUGHTER

*Must be prior booked [www.exmoorfarmers.co.uk](http://www.exmoorfarmers.co.uk)*  
~~~~~