



**AVANALE IS AN AUSTRALIAN OWNED AND OPERATED WHOLESALER BASED IN BRISBANE
DESIGNING AND MANUFACTUREING A PREMIUM RANGE OF UF & RO - OEM BRANDING AVAILABLE
WE IMPORT DIRECT AND PROVIDE THE BEST QUALITY PRODUCTS TO THE WATER INDUSTRY
OUR GOAL IS LOWER YOUR COSTS WITH SOME OF THE BEST PRODUCTS ON THE MARKET
PURCHASE DIRECT AND SAVE**

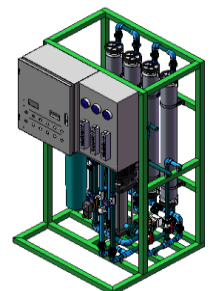
Avanale Filtration Catalogue

VOLUME DISCOUNTS AVAILABLE

Contents

Filter Housings	2
Sediment Polyspun Filters	3
Carbon Block Filters	5
POU / Inline Filters	6
Empty Cartridge Cannisters	7
PVC Cluster Housings	8
Stainless Steel Cluster Filter Housings	9
PVC Bag Filter Housings Stainless Steel	10
Stainless Steel Bag Filter Housings	11
Bag Filters	11
Softener/Media Filter Valves	12
FRP Pressure Vessel Tanks	13
Distributors - Riser Pipes	15
Hub & Laterals	15
Brine Tanks & Accessories	18
RO & UF Systems	19
Media - Spares and Misc	20

Note that stock levels vary from time to time. There may be a short lead time for out of stock items



Cartridge Filter Housings

Avanale filter housings are manufactured from the highest quality, constructed of reinforced polypropylene (PP), acrylonitrile butadiene styrene (ABS) and polycarbonate (PC). They are 100% food grade with EPDM O'Rings and are ideal for use in RO and filtration systems. They are commonly used in the industrial and commercial industry in fields such as irrigation, farm, food and medicine. The Avanale housings are commonly used for domestic and industrial applications and fit most standard 10" and 20" filter cartridges.

Operating Data

Working pressure : 150PSI (Residential Housings 120PSI)

Max temperature : 50°C

Testing Data

Bursting pressure: 525PSI

Cycle Test : 0-150PSI, 100,000 cycles



Note standard diameter refers to 2.5" diameter

Note large diameter refers to 4" diameter - commonly referred to as "Big Blue" style

2½" High Flow Filter Housings

Residential Filter Housings

- 1014CW-D 10" Standard Diameter White Double O-Ring Housing with 1/4" Ports
- 1014CW 10" Standard Diameter Clear Housing, Single O'Ring with 1/4" Ports
- 1014WW 10" Standard Diameter White Housing, Single O'Ring, with White Flat Cap, ¼" Ports
- 1014CW-RB 2½" x 10" White Housing, Double O'Ring, White Rib Cap, ¼" Ports
- 1014WW-RB 2½" x 10" White Housing, Double O'Ring, White Rib Cap, ¼" Ports



- 10BBK34 10" Standard Diameter Blue Housing with ¾" Ports & Pressure Relief Valve
- 20BBK34 20" Standard Diameter Blue Housing with ¾" Ports & Pressure Relief Valve



Large Diameter Big Blue Filter Housings

- 10BBK10 10" Large Diameter Big Blue Housing with 1" Ports & Pressure Relief Valve, Bracket & Spanner
- 20BBK10 20" Large Diameter Big Blue Housing with 1" Ports & Pressure Relief Valve, Bracket & Spanner



Stainless Steel Filter Housings

- 10SS12 10" Stainless Steel Large Diameter Housing with 1/2" Ports
- 10SS34 10" Stainless Steel Large Diameter Housing with 3/4" Ports
- 20SS12 20" Stainless Steel Large Diameter Housing with 1/2" Ports
- 20SS34 20" Stainless Steel Large Diameter Housing with 3/4" Ports



Spares

- BRACKET Bracket To Suit Large Diameter Big Blue Housing
- SPANNER Spanner To Suit Large Diameter Big Blue Housing
- BBORING O'Ring To Suit Large Diameter Big Blue Housing



Melt Blown Filter Cartridges

Avanale's melt blown filter cartridges are self-bonded and structured with 3 different layers of fibre, thinner and tighter on the inside through to thicker on the outside. This unique design provides better dirt holding capacity and improved filtration, thus prolonging service life and lower operating costs. Our own inhouse/field " Silt Density Indicator "(SDI) tests have shown superior results than that of other filters purchased in Australia. Avanale imports quality filters, keeping margins low, thus offering a superior product at the best possible price.

Features

- # 100% Pure polypropylene construction
- # Wide chemical compatibility
- # No lubricator anti-static additives
- # Higher dirt holding capacity
- # Consistent filtration over the life of the cartridge
- # Low pressure drop & fits standard housings

Applications

- # Residential & commercial water treatment
- # Fine chemical, reagents, solvents, resins
- # Reverse osmosis pre-treatment
- # Food & beverage, pharmaceutical
- # Make-up water

Specifications

- # Outside diameter : 62mm, 63mm, 65mm, 115mm
- # Inner diameter : 28mm, 30mm
- # Micron rating (nominal) : 1, 5, 10, 20, 30, 50, 70, 100 Micron
- # Filter Media : Polypropylene
- # Maximum Operating Temperature Rating : 52°C



Note standard diameter refers to 2.5" diameter

SF1001	10" Standard Diameter Dual Gradient Density Polyspun sediment Filter 1 micron
SF1005	10" Standard Diameter Dual Gradient Density Polyspun sediment Filter 5 micron
SF1010	10" Standard Diameter Dual Gradient Density Polyspun sediment Filter 10 micron
SF1020	10" Standard Diameter Dual Gradient Density Polyspun sediment Filter 20 micron
SF1030	10" Standard Diameter Dual Gradient Density Polyspun sediment Filter 30 micron
SF1050	10" Standard Diameter Dual Gradient Density Polyspun sediment Filter 50 micron

SF2001	20" Standard Diameter Dual Gradient Density Polyspun sediment Filter 1 micron
SF2005	20" Standard Diameter Dual Gradient Density Polyspun sediment Filter 5 micron
SF2010	20" Standard Diameter Dual Gradient Density Polyspun sediment Filter 10 micron
SF2020	20" Standard Diameter Dual Gradient Density Polyspun sediment Filter 20 micron
SF2030	20" Standard Diameter Dual Gradient Density Polyspun sediment Filter 30 micron
SF2050	20" Standard Diameter Dual Gradient Density Polyspun sediment Filter 50 micron

SF3001	30" Standard Diameter Dual Gradient Density Polyspun sediment Filter 1 micron
SF3005	30" Standard Diameter Dual Gradient Density Polyspun sediment Filter 5 micron
SF3010	30" Standard Diameter Dual Gradient Density Polyspun sediment Filter 10 micron
SF3020	30" Standard Diameter Dual Gradient Density Polyspun sediment Filter 20 micron
SF3030	30" Standard Diameter Dual Gradient Density Polyspun sediment Filter 30 micron
SF3050	30" Standard Diameter Dual Gradient Density Polyspun sediment Filter 50 micron

SF4001	40" Standard Diameter Dual Gradient Density Polyspun sediment Filter 1 micron
SF4003	40" Standard Diameter Dual Gradient Density Polyspun sediment Filter 3 micron
SF4005	40" Standard Diameter Dual Gradient Density Polyspun sediment Filter 5 micron
SF4010	40" Standard Diameter Dual Gradient Density Polyspun sediment Filter 10 micron
SF4020	40" Standard Diameter Dual Gradient Density Polyspun sediment Filter 20 micron
SF4030	40" Standard Diameter Dual Gradient Density Polyspun sediment Filter 30 micron
SF4050	40" Standard Diameter Dual Gradient Density Polyspun sediment Filter 50 micron

Note large diameter refers to 4" diameter - commonly referred to as "Big Blue" style

SF-BB-1001	10" Large Diameter Dual Gradient Density Polyspun Sediment Filter 1 micron
SF-BB-1005	10" Large Diameter Dual Gradient Density Polyspun Sediment Filter 5 micron
SF-BB-1010	10" Large Diameter Dual Gradient Density Polyspun Sediment Filter 10 micron

FS-BB-2001	20" Large Diameter Dual Gradient Density Polyspun Sediment Filter 1 micron
SF-BB-2005	20" Large Diameter Dual Gradient Density Polyspun sediment Filter 5 micron
SF-BB-2010	20" Large Diameter Dual Gradient Density Polyspun Sediment Filter 10 micron



String Wound Filter Cartridge

Avanale's string wound filter cartridges are structured loose outer layers and tight inner layers which can offer true depth filtration for high dirt holding capacity and extremely low media migration to ensure temperature and chemical compatibility./ The biggest advantage of the string wound filter cartridge is its exceptionally high structural strength, therefore, it can withstand severe operating conditions.

Features

- # Fits all the standard housings
- # Low pressure drop, high dirt holding capacity and long service life
- # Loose outer layers and tight inner layers offer effective depth filtration
- # Various filter media fit with various applications

Applications

- # Food & beverage
- # Semiconductor
- # Pharmaceuticals

Specifications

- # Outside Diameter : 55mm, 61mm, 63mm, 65mm, 115mm
- # Inner Diameter : 28mm, 30mm
- # Micron Rating (nominal) : 1, 5, 10 20, 30, 50, 70, 100 Micron
- # Filter Media : Polypropylene, Cotton, Glass Fibre
- # Polypropylene material for non-organic solvent , maximum operating temperature < 60°C
- # Solvent, beverage, pharmaceuticals, maximum operating temperature : 120°C
- # Length : 5", 10", 20", 30", 40"



Note standard diameter refers to 2.5" diameter

STF1001	10" Standard Diameter String Wound sediment Filter 1 micron
STF1005	10" Standard Diameter String Wound sediment Filter 5 micron
STF1010	10" Standard Diameter String Wound sediment Filter 10 micron
STF1020	10" Standard Diameter String Wound sediment Filter 20 micron
STF1050	10" Standard Diameter String Wound sediment Filter 50 micron
STF10100	10" Standard Diameter String Wound sediment Filter 100 micron

STF2001	20" Standard Diameter String Wound sediment Filter 1 micron
STF2005	20" Standard Diameter String Wound sediment Filter 5 micron
STF2010	20" Standard Diameter String Wound sediment Filter 10 micron
STF2020	20" Standard Diameter String Wound sediment Filter 20 micron
STF2050	20" Standard Diameter String Wound sediment Filter 50 micron
STF20100	20" Standard Diameter String Wound sediment Filter 100 micron

STF3001	30" Standard Diameter String Wound sediment Filter 1 micron
STF3005	30" Standard Diameter String Wound sediment Filter 5 micron
STF3010	30" Standard Diameter String Wound sediment Filter 10 micron
STF3020	30" Standard Diameter String Wound sediment Filter 20 micron
STF3050	30" Standard Diameter String Wound sediment Filter 50 micron
STF30100	30" Standard Diameter String Wound sediment Filter 100 micron

STF4001	40" Standard Diameter String Wound sediment Filter 1 micron
STF4005	40" Standard Diameter String Wound sediment Filter 5 micron
STF4010	40" Standard Diameter String Wound sediment Filter 10 micron
STF4020	40" Standard Diameter String Wound sediment Filter 20 micron
STF4050	40" Standard Diameter String Wound sediment Filter 50 micron
STF40100	40" Standard Diameter String Wound sediment Filter 100 micron

Note large diameter refers to 4" diameter - commonly referred to as "Big Blue" style

MTSWBB-10-5	10" Large Diameter String Wound sediment Filter 5 micron
MTSWBB10-10	10" Large Diameter String Wound sediment Filter 10 micron
MTSWBB20-5	20" Large Diameter String Wound sediment Filter 5 micron
MTSWBB20-10	20" Large Diameter String Wound sediment Filter 10 micron



Activated Carbon Filter Cartridge

Avanale's sintered/extruded carbon block filter cartridges (CTO) use high-density activated carbon and exclusive inert adhesives as the main materials of construction. The large granular surface area has a tremendous capacity to remove chlorine, unpleasant odours, colours, as well as spores and microorganisms. The unique manufacturing techniques and material of the highest quality guarantee excellent durability, minimal pressure loss and high filtration rate. CTO filter element is made of coconut shell GAC which as a better filtration effect upon chemicals.

Features

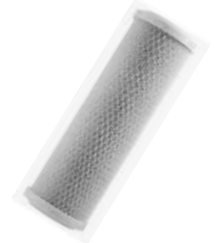
- # Reduce chlorine, bad taste, odours
- # No release of carbon fines
- # Low pressure drop activated

Specifications

- # Outside diameter : 70mm, 115mm
- # Inner diameter : 28mm
- # Length : 5", 9-7/8", 20", 30", 40"
- # Micron Rating (nominal) : 1, 5, 10 Micron
- # Filter media: Acid washed bituminous GAC & water washed coconut shell GAC, manufactured in a "block format" for maximum carbon volume - suits standard and BB type filter housings
- # Maximum pressure : 40PSI
- # End Cap : Polypropylene



	Note standard diameter refers to 2.5" diameter
CTO-1001-CNT	10" Standard Diameter Carbon Block Filter 1 micron
CTO-1005-CNT	10" Standard Diameter Carbon Block Filter 5 micron
CTO-1010-CNT	10" Standard Diameter Carbon Block Filter 10 micron
CTO-2001-CNT	20" Standard Diameter Carbon Block Filter 1 micron
CTO-2005-CNT	20" Standard Diameter Carbon Block Filter 5 micron
CTO-2010-CNT	20" Standard Diameter Carbon Block Filter 10 micron
	Note large diameter refers to 4" diameter - commonly referred to as "Big Blue" style
CTO-BB-1001-CNT	10" Large Diameter Carbon Block Filter 1 micron
CTO-BB-1005-CNT	10" Large Diameter Carbon Block Filter 5 micron
CTO-BB-1010-CNT	10" Large Diameter Carbon Block Filter 10 micron
CTO-BB-2001-CNT	20" Large Diameter Carbon Block Filter 1 micron
CTO-BB-2005-CNT	20" Large Diameter Carbon Block Filter 5 micron
CTO-BB-2010-CNT	20" Large Diameter Carbon Block Filter 10 micron



ACIC Series Filter Cartridge

The powdered activated carbon impregnated cellulose filter cartridges are the composite combine of the performance of depth filtration and adaption of activated carbon fine. The outside deep fibre media can remove particles and the activated carbon in each filter cloth can absorb the smell, odour, sediment, pigment, VOC and organic chemicals. The inside fibre filter can prevent carbon particles and fine pollutants to pass through, ensuring the efficient quality and integrated filtration.

Features

- # Nominal 10 particle removal rating
- # Absorption of organic substances by activated
- # Solution of photograph developing
- # Solution to remove oil & aromatic
- # Filtration & absorption finished in one time process

Application

- # Plating solution
- # Removing dissociative chlorine & volatile organic compounds (VOC) in solution
- # Drinking water & RO pure water treatment
- # Remove smell, odour, organic pigment
- # Remove organic chemical

Specifications

- # Outside Diameter : 58mm - 112mm
- # Inside Diameter : 28mm



MT-ACIC-10-5	10" Standard Diameter Powdered Activated Carbon Filter 5 micron
MT-ACIC-10-10	10" Standard Diameter Powdered Activated Carbon Filter 10 micron
MT-ACIC-20-5	20" Standard Diameter Powdered Activated Carbon Filter 5 micron
MT-ACIC-20-10	20" Standard Diameter Powdered Activated Carbon Filter 10 micron
MT-ACICBB-10-5	10" Large Diameter Powdered Activated Carbon Filter 5 micron
MT-ACICBB-10-10	10" Large Diameter Powdered Activated Carbon Filter 10 micron
MT-ACICBB-20-5	20" Large Diameter Powdered Activated Carbon Filter 5 micron
MT-ACICBB-20-10	20" Large Diameter Powdered Activated Carbon Filter 10 micron



GAC Series Granular Activated Carbon Cartridges

GAC series cartridges effectively reduce unwanted tastes, odours as well chlorine tastes from your drinking water. They are designed to allow maximum contact between the water and carbon, ensuring maximum absorption. The construction of the cartridge allows water to enter at one end and pass through the entire length of the carbon bed before exiting the other end of the cartridge, while an internal expansion pad minimises channelling or bypass. Before the water exits the cartridge, a post filter helps reduce carbon fines and other suspended particles from the filtered water. The post filter is permanently fastened to an innovative support basket ensuring that it is firmly secured and eliminating any potential for bypass. GAC series cartridges are available in a variety of sizes and flow rates. They provide a very effective general-purpose drinking water filtration solution.

Features

- # Effective bad taste & odour reduction
- # High quality coconut shell granular activated carbon
- # Designed for maximum absorption
- # Post filter to reduce carbon fines
- # Available in a variety of sizes & flow rates



GAC-10WNB	10" Granular Activated Carbon Cartridge, White & Blue
GAC-20WNB	20" Granular Activated Carbon Cartridge, White & Blue
GAC-10CLC	10" Granular Activated Carbon Cartridge, Clear
GAC-10BLU	10" Granular Activated Carbon Cartridge, Blue
GAC-PK-10	10" Granular Activated Carbo Cartridge, PK Series
GAC-PK-20	20" Granular Activated Carbo Cartridge, PK Series
MT-DUL-10PNG	10" Dual Filter PP With GAC

In-Line Filter Cartridges

Post in-line filters filled with coconut shell carbon are designed to reduce unwanted odour, taste and chlorine. The choice of polypropylene media used for sediment removal. In-line filters are an ideal choice of final polishing in home reverse osmosis drinking water systems, ice makers, as well as food service applications. Avanale's GAC In-line filters comply with NSF standard.

Features

- # Efficient removal of chlorine & organic chemicals
- # Improvement in the taste of the water
- # Installation eliminates the need for additional filter housing
- # Competitively priced carbon filters
- # Ideal for residential & commercial applications
- # All in-line filters include a "pre" & "post" filter

Application

- # Pre & post RO
- # Refrigerator/Ice maker
- # Drinking water purity

Specification

- # Inlet & Outlet : ¼" or Quick Connect
- # Dimensions : OD 2", 2½" Length 6", 10", 12"



MT-T33-GAC-1020	T-33 In-line GAC Filter Cartridge 10" x 2"
MT-T33-PPF-1020	T-33 In-line PP Filter Cartridge 10" x 2"
MT-T33-MNF-1020	T-33 In-line Mineral Filter Cartridge 10" x 2"
MT-T33-MNF-1020C	T-33 In-line Mineral Filter Cartridge 10" x 2", Clear Type
MT-T33-MLM-1020	T3-33 In-line Multi Layered Medium Filter Cartridge 10" x 2"
MT-T33-ESF-1020	T-33 In-line Energy Stone Filter Cartridge 10" x 2"
MT-T33-GAC-1225	T-33 In-line GAC Filter Cartridge 12" x 2½"
MT-T33-PPF-1225	T-33 In-line PP Filter Cartridge 12" x 2½"
MF-T33-UF-1225	T-33 In-line UF Cartridge 12" x 2½"

Big Blue Pleated Filter Cartridge

Avanale's Big Blue Filter Cartridges are made of pleated polyester filter media for low pressure drop, increased surface area and longer life.

Features

- # Pleated design, increased surface area and contaminant removal
- # Longer filtration runs for fewer change-out & less maintenance
- # Low pressure Drop
- # Designed for general water filtration purposes
- # Long lengths have netting to hold pleats in place

Specifications

- # Outside Diameter : 4½"
- # Inside Diameter : 1-1/16"
- # Centre Core : Polypropylene
- # Micron Rating : 0.5, 1, 5, 10, 20, 50 Micron
- # Filter Media : Polyester



PF-BB-0050-10	10" Large Diameter Big Blue Pleated Filter Cartridge 0.5 micron
PF-BB-0100-10	10" Large Diameter Big Blue Pleated Filter Cartridge 1 micron
PF-BB-0500-10	10" Large Diameter Big Blue Pleated Filter Cartridge 5 micron
PF-BB-1000-10	10" Large Diameter Big Blue Pleated Filter Cartridge 10 micron
PF-BB-2000-10	10" Large Diameter Big Blue Pleated Filter Cartridge 20 micron
PF-BB-0050-20	20" Large Diameter Big Blue Pleated Filter Cartridge 0.5 micron
PF-BB-0100-20	20" Large Diameter Big Blue Pleated Filter Cartridge 1 micron
PF-BB-0500-20	20" Large Diameter Big Blue Pleated Filter Cartridge 5 micron
PF-BB-1000-20	20" Large Diameter Big Blue Pleated Filter Cartridge 10 micron
PF-BB-2000-20	20" Large Diameter Big Blue Pleated Filter Cartridge 20 micron



Hurricane Filter Cartridge

Avanale's Hurricane Filter Cartridges are made of pleated polyester filter media for low pressure drop, increased surface area and longer area.

Features

- # Pleated design, increased surface area and contaminant removal
- # Longer filtration runs for fewer change-outs & less maintenance
- # Low pressure drop
- # Designed for general water filtration purposes

Specifications

- # Outside Diameter : 7¾"
- # Length : 9-5/8", 19½", 30¾"
- # Micron rating (nominal) : 1, 5, 10, 20, 50 Micron
- # Filter Media : Polyester
- # Maximum Temperature : 60°C



MTHC-40-1	Hurricane 40 Filter Cartridge 1 micron
MTHC-40-5	Hurricane 40 Filter Cartridge 5 micron
MTHC-40-10	Hurricane 40 Filter Cartridge 10 micron
MTHC-40-20	Hurricane 40 Filter Cartridge 20 micron
MTHC-40-50	Hurricane 40 Filter Cartridge 50 micron
MTHC-90-1	Hurricane 90 Filter Cartridge 1 micron
MTHC-90-5	Hurricane 90 Filter Cartridge 5 micron
MTHC-90-10	Hurricane 90 Filter Cartridge 10 micron
MTHC-90-20	Hurricane 90 Filter Cartridge 20 micron
MTHC-90-50	Hurricane 90 Filter Cartridge 50 micron
MTHC-170-1	Hurricane 170 Filter Cartridge 1 micron
MTHC-170-5	Hurricane 170 Filter Cartridge 5 micron
MTHC-170-10	Hurricane 170 Filter Cartridge 10 micron
MTHC-170-20	Hurricane 170 Filter Cartridge 20 micron
MTHC-170-50	Hurricane 170 Filter Cartridge 50 micron

MT-CRT10-EM	10" Empty Cartridge Housing Clear
MT-GAC10-EM	10" Empty Cartridge Housing Blue
MT-GAC20-EM	20" Empty Cartridge Housing Blue
MT-GAC10-EM-BB	10" Empty Cartridge Housing Big Blue
MT-GAC20-EM-BB	20" Empty Cartridge Housing Big Blue



Membrane Pleated Filter Cartridge

Avanale's Polypropylene Pleated Filter High Precision Cartridge is constructed of micro polypropylene media and non woven or self net support. Adaptors are thermal welded with cartridges without using any glue on it so there will be no possibilities to cause the second pollution.

Features

- # High surface area design provides superior flow rate & high dirt holding capacity
- # Low pressure drop & long service life
- # Using 100% virgin polypropylene media with extensive applications
- # Wide micron range

Applications

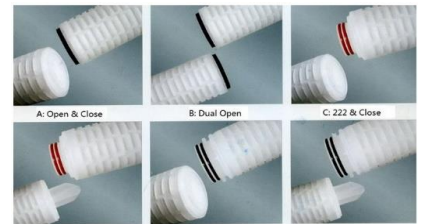
- # Food, beverage, semiconductor, pharmaceutical
- # Solvents, acid, ink pre-filtration for RO & bottled water

Specifications

- # Outside diameter : 70mm
- # Inner Diameter : 28mm
- # Length : 10", 20", 30", 40"
- # Micron Rating (nominal) : 0.1um, 0.22um, 0.45um, 1um, 3um, 5um, 10um, 20um, 50um
- # Filter media : Polypropylene
- # Filtration Area : 0.5-0.7m²/ 10"
- # Operating Temperature : 80°C , 0.1Mpa
- # Operation pressure : 50°C Back , 0.3Mpa
- # Pressure difference : 0.28Mpa, 25°C



MTMPP-0010-10	10" Polypropylene Pleated Filter Cartridge 0.1 micron
MTMPP-0022-10	10" Polypropylene Pleated Filter Cartridge 0.22 micron
MTMPP-0045-10	10" Polypropylene Pleated Filter Cartridge 0.45 micron
MTMPP-01-10	10" Polypropylene Pleated Filter Cartridge 1 micron
MTMPP-05-10	10" Polypropylene Pleated Filter Cartridge 5 micron
MTMPP-10-10	10" Polypropylene Pleated Filter Cartridge 10 micron
MTMPP-20-10	10" Polypropylene Pleated Filter Cartridge 20 micron
MTMPP-50-10	10" Polypropylene Pleated Filter Cartridge 50 micron
MTMPP-0010-20	20" Polypropylene Pleated Filter Cartridge 0.1 micron
MTMPP-0022-20	20" Polypropylene Pleated Filter Cartridge 0.22 micron
MTMPP-0045-20	20" Polypropylene Pleated Filter Cartridge 0.45 micron
MTMPP-01-20	20" Polypropylene Pleated Filter Cartridge 1 micron
MTMPP-05-20	20" Polypropylene Pleated Filter Cartridge 5 micron
MTMPP-10-20	20" Polypropylene Pleated Filter Cartridge 10 micron
MTMPP-20-20	20" Polypropylene Pleated Filter Cartridge 20 micron
MTMPP-50-20	20" Polypropylene Pleated Filter Cartridge 50 micron
MTMPP-0010-30	30" Polypropylene Pleated Filter Cartridge 0.1 micron
MTMPP-0022-30	30" Polypropylene Pleated Filter Cartridge 0.22 micron
MTMPP-0045-30	30" Polypropylene Pleated Filter Cartridge 0.45 micron
MTMPP-01-30	30" Polypropylene Pleated Filter Cartridge 1 micron
MTMPP-05-30	30" Polypropylene Pleated Filter Cartridge 5 micron
MTMPP-10-30	30" Polypropylene Pleated Filter Cartridge 10 micron
MTMPP-20-30	30" Polypropylene Pleated Filter Cartridge 20 micron
MTMPP-50-30	30" Polypropylene Pleated Filter Cartridge 50 micron
MTMPP-0010-40	40" Polypropylene Pleated Filter Cartridge 0.1 micron
MTMPP-0022-40	40" Polypropylene Pleated Filter Cartridge 0.22 micron
MTMPP-0045-40	40" Polypropylene Pleated Filter Cartridge 0.45 micron
MTMPP-01-40	40" Polypropylene Pleated Filter Cartridge 1 micron
MTMPP-05-40	40" Polypropylene Pleated Filter Cartridge 5 micron
MTMPP-10-40	40" Polypropylene Pleated Filter Cartridge 10 micron
MTMPP-20-40	40" Polypropylene Pleated Filter Cartridge 20 micron
MTMPP-50-40	40" Polypropylene Pleated Filter Cartridge 50 micron



Cartridge Filters (3,5,8 or 9 Rounds)

Avanale cartridge filter housing's are designed with high precision, mainly used in pre-treatment in industries such as sewage water treatment, beverage, food, electronics, sea water applications and pure water purification equipment.

Features

- # uPVC material has excellent corrosion resistance
- # Highest working temperature is 45°
- # Inlet & Outlet are featured under the same line connecting with 1½" or 2"
- # The distribution system is from bottom to top
- # Water is well-proportioned with small strike to cartridges & air is easy to be discharged
- # The bottom system is designed together as a whole with the top localizer & closure system
- # Cartridges are easy to be installed, pushed down and closed, preventing leaking inside



-CF-3DC1	3 Round Cartridge Filter 225w x 465h, 10"
-CF-3DC2	3 Round Cartridge Filter 225w x 715h, 20"
-CF-3DC3	3 Round Cartridge Filter 225w x 965h, 30"
-CF-3DC4	3 Round Cartridge Filter 225w x 1215h, 40"
-CF-5DC1	5 Round Cartridge Filter 225w x 465h, 10"
-CF-5DC2	5 Round Cartridge Filter 225w x 715h, 20"
-CF-5DC3	5 Round Cartridge Filter 225w x 965h, 30"
-CF-5DC4	5 Round Cartridge Filter 225w x 1215h, 40"
-CF-8DC1	8 Round Cartridge Filter 315w x 495h, 3" Inlet/Outlet, ½" Drain
-CF-8DC2	8 Round Cartridge Filter 315w x 745h, 3" Inlet/Outlet, ½" Drain
-CF-8DC3	8 Round Cartridge Filter 315w x 995h, 3" Inlet/Outlet, ½" Drain
-CF-8DC4	8 Round Cartridge Filter 315w x 1245h, 3" Inlet/Outlet, ½" Drain
-CF-9DC1	9 Round Cartridge Filter 315w x 495h, 3" Inlet/Outlet, ½" Drain
-CF-9DC2	9 Round Cartridge Filter 315w x 745h, 3" Inlet/Outlet, ½" Drain
-CF-9DC3	9 Round Cartridge Filter 315w x 995h, 3" Inlet/Outlet, ½" Drain
-CF-9DC4	9 Round Cartridge Filter 315w x 1245h, 3" Inlet/Outlet, ½" Drain



Stainless Steel Multi-Cartridge Filter Housings

Avanale offers high quality bag filter housings in both SS304 and SS316 for use in commercial and industrial water filtration as well as purification systems. With a wide range of sizes and flow capacities we can offer a number of options to satisfy your requirements.

Features

- # Accepts SOE Flat Closed End, SOE Fin Closed End or Doe Style Filter Cartridges
- # V-Clamp/Eye Bolt Flange allows quick, easy cartridge change out
- # SS316 materials of construction for maximum corrosion resistance
- # Matt finishing (standard) Electropolishing is optional
- # Shell O'Ring : EPDM (standard), Viton, Teflon encapsulated Viton
- # Maximum working pressure : 150PSI
- # Working temperature : 4-60°C



BT Series Side Entry Filter Housings

SFT5-20-FLG-BT	SS Side Entry Filter Housing, 200w x 1100h, 1½" Inlet/Outlet, 5 Cartridges, 20"
SFT5-30-FLG-BT	SS Side Entry Filter Housing, 200w x 1350h, 2" Inlet/Outlet, 5 Cartridges, 30"
SFT7-20-FLG-BT	SS Side Entry Filter Housing, 230w x 1100h, 1½" Inlet/Outlet, 7 Cartridges, 20"
SFT7-30-FLG-BT	SS Side Entry Filter Housing, 230w x 1350h, 2" Inlet/Outlet, 7 Cartridges, 30"
SFT12-20-FLG-BT	SS Side Entry Filter Housing, 300w x 1200h, 2" Inlet/Outlet, 12 Cartridges, 20"
SFT12-30-FLG-BT	SS Side Entry Filter Housing, 300w x 1400h, 2" Inlet/Outlet, 12 Cartridges, 30"
SFT12-40-FLG-BT	SS Side Entry Filter Housing, 300w x 1650h, 2½" Inlet/Outlet, 12 Cartridges, 40"
SFT15-30-FLG-BT	SS Side Entry Filter Housing, 350w x 1500h, 2½" Inlet/Outlet, 15 Cartridges, 30"
SFT15-40-FLG-BT	SS Side Entry Filter Housing, 350w x 1700h, 3" Inlet/Outlet, 15 Cartridges, 40"
SFT20-30-FLG-BT	SS Side Entry Filter Housing, 400w x 1550h, 3" Inlet/Outlet, 20 Cartridges, 30"
SFT20-40-FLG-BT	SS Side Entry Filter Housing, 400w x 1750h, 3" Inlet/Outlet, 20 Cartridges, 40"
SFT25-40-FLG-BT	SS Side Entry Filter Housing, 450w x 1850h, 3" Inlet/Outlet, 25 Cartridges, 40"
SFT30-40-FLG-BT	SS Side Entry Filter Housing, 500w x 1900h, 4" Inlet/Outlet, 30 Cartridges, 40"
SFT40-40-FLG-BT	SS Side Entry Filter Housing, 550w x 2050h, 4" Inlet/Outlet, 40 Cartridges, 40"
SFT45-40-FLG-BT	SS Side Entry Filter Housing, 600w x 2200h, 5" Inlet/Outlet, 45 Cartridges, 40"
SFT50-40-FLG-BT	SS Side Entry Filter Housing, 700w x 2200h, 5" Inlet/Outlet, 50 Cartridges, 40"
SFT60-40-FLG-BT	SS Side Entry Filter Housing, 700w x 2200h, 6" Inlet/Outlet, 60 Cartridges, 40"
SFT70-40-FLG-BT	SS Side Entry Filter Housing, 800w x 2300h, 6" Inlet/Outlet, 70 Cartridges, 40"
SFT80-40-FLG-BT	SS Side Entry Filter Housing, 800w x 2300h, 6" Inlet/Outlet, 80 Cartridges, 40"
SFT90-40-FLG-BT	SS Side Entry Filter Housing, 900w x 2500h, 6" Inlet/Outlet, 90 Cartridges, 40"
SFT100-40-FLG-BT	SS Side Entry Filter Housing, 1000w x 2750h, 6" Inlet/Outlet, 100 Cartridges, 40"



SFT120-40-FLG-BT	SS Side Entry Filter Housing, 1000w x 2750h, 6" Inlet/Outlet, 120 Cartridges, 40"
SD Series Side Entry Filter Housings	
SFT5-20-FLG-SD	SS Side Entry Filter Housing, 200w x 1000h, 1½" Inlet/Outlet, 5 Cartridges, 20"
SFT5-30-FLG-SD	SS Side Entry Filter Housing, 200w x 1200h, 2" Inlet/Outlet, 5 Cartridges, 30"
SFT7-20-FLG-SD	SS Side Entry Filter Housing, 230w x 1000h, 1½" Inlet/Outlet, 7 Cartridges, 20"
SFT7-30-FLG-SD	SS Side Entry Filter Housing, 230w x 1200h, 2" Inlet/Outlet, 7 Cartridges, 30"
SFT12-20-FLG-SD	SS Side Entry Filter Housing, 300w x 1050h, 2" Inlet/Outlet, 12 Cartridges, 20"
SFT12-30-FLG-SD	SS Side Entry Filter Housing, 300w x 1300h, 2" Inlet/Outlet, 12 Cartridges, 30"
SFT12-40-FLG-SD	SS Side Entry Filter Housing, 300w x 1600h, 2½" Inlet/Outlet, 12 Cartridges, 40"
SFT15-30-FLG-SD	SS Side Entry Filter Housing, 350w x 1400h, 2½" Inlet/Outlet, 15 Cartridges, 30"
SFT15-40-FLG-SD	SS Side Entry Filter Housing, 350w x 1600h, 3" Inlet/Outlet, 15 Cartridges, 40"
SFT20-30-FLG-SD	SS Side Entry Filter Housing, 400w x 1450h, 3" Inlet/Outlet, 20 Cartridges, 30"
SFT20-40-FLG-SD	SS Side Entry Filter Housing, 400w x 1650h, 3" Inlet/Outlet, 20 Cartridges, 40"
SFT25-40-FLG-SD	SS Side Entry Filter Housing, 450w x 1750h, 3" Inlet/Outlet, 25 Cartridges, 40"
SFT30-40-FLG-SD	SS Side Entry Filter Housing, 500w x 1800h, 4" Inlet/Outlet, 30 Cartridges, 40"
SFT40-40-FLG-SD	SS Side Entry Filter Housing, 550w x 1950h, 4" Inlet/Outlet, 40 Cartridges, 40"
SFT45-40-FLG-SD	SS Side Entry Filter Housing, 600w x 2160h, 5" Inlet/Outlet, 45 Cartridges, 40"
SFT50-40-FLG-SD	SS Side Entry Filter Housing, 700w x 2200h, 5" Inlet/Outlet, 50 Cartridges, 50"
SFT60-40-FLG-SD	SS Side Entry Filter Housing, 700w x 2200h, 6" Inlet/Outlet, 60 Cartridges, 40"
SFT70-40-FLG-SD	SS Side Entry Filter Housing, 800w x 2200h, 6" Inlet/Outlet, 70 Cartridges, 40"
SFT80-40-FLG-BT	SS Side Entry Filter Housing, 800w x 2200h, 6" Inlet/Outlet, 80 Cartridges, 40"
SFT90-40-FLG-SD	SS Side Entry Filter Housing, 900w x 2400h, 8" Inlet/Outlet, 90 Cartridges, 40"
SFT100-40-FLG-SD	SS Side Entry Filter Housing, 1000w x 2650h, 8" Inlet/Outlet, 100 Cartridges, 40"
SFT120-40-FLG-SD	SS Side Entry Filter Housing, 1000w x 2650h, 8" Inlet/Outlet, 120 Cartridges, 40"



Bag Filters & Housings

Avanale offers a high precision, big flow, easy installation and easy maintenance bag filter system. It is widely used in different industries including foods, cosmetics, chemistry, medicine and textiles. The bag filter system consists of the housing, support basket and the filter bag.

Features

- # uPVC material has excellent corrosion resistance
- # The unique seal system makes the filter more secure
- # It can prevent the bag from being plunged into the support basket, thus no inner leak
- # Fantastic appearance & compact inner construct
- # High precision so the filter range can be from 0.5-200um
- # High efficiency, quick flow of liquid, big capacity of impurity
- # Price is very competitive



-BF-1-1	uPVC Bag Filter 225w x 820h, ANSI 150 Flanged Inlet/Outlet, 665mm Housing, Bag 1#, Flow 20m ³ /h
-BF-1-2	uPVC Bag Filter 225w x 1200h, ANSI 150 Flanged Inlet/Outlet, 1045mm Housing, Bag 2#, Flow 40m ³ /h

High Flow Filters

Avanale's high flow filter systems are used in applications such as sewage, wastewater, desalination, electronics and other industries. The PF filter system is featured with high flow, long service life and good operation of complex liquids. The filter system consists of the housing and the cartridge.

Features

- # uPVC material has excellent corrosion resistance
- # Flow is more than other cartridges
- # Longer service life, up to 3 times that of others
- # Handle design means the cartridge replacement is easier



-HF-20	uPVC High Flow Filter, 225w x 1006h, ANSI 150 Flanged Inlet/Outlet, 25m ³ /h
-HF-50	uPVC High Flow Filter, 225w x 1506h, ANSI 150 Flanged Inlet/Outlet, 50m ³ /h

Stainless Steel Single Bag Filter Housings

Avanale offers high quality bag filter housings in both SS304 and SS316 for use in commercial and industrial water filtration as well as purification systems. With a wide range of sizes and flow capacities we can offer a number of options to satisfy your requirements.

Features

- # Side inlet piping connection
- # Unique 2-weld design
- # Buna N Seals as standard
- # Electro polishing stainless steel perforated basket
- # 1", 1½" & 2" GB, ANSI 150 or DIN flanged connections
- # Maximum operating pressure 150PSI
- # Maximum operating temperature 150°C
- # Adjustable mounting legs
- # 304 or 316 stainless steel construction



BFH1-1 SS Side Entry Filter Housing With Eye-Bolt Flange, 1½" Flange Connection, #1 Bag Filter
BFH2-1 SS Side Entry Filter Housing With Eye-Bolt Flange, 2" Flange Connection, #2 Bag Filter

Bag Filters

BF101 Polypropylene #1 Bag Filter, 178mm x 418mm, 1 Micron
BF105 Polypropylene #1 Bag Filter, 178mm x 418mm, 5 Micron
BF110 Polypropylene #1 Bag Filter, 178mm x 418mm, 10 Micron
BF125 Polypropylene #1 Bag Filter, 178mm x 418mm, 25 Micron
BF150 Polypropylene #1 Bag Filter, 178mm x 418mm, 50 Micron
BF1100 Polypropylene #1 Bag Filter, 178mm x 418mm, 100 Micron
BF1200 Polypropylene #1 Bag Filter, 178mm x 418mm, 200 Micron

BF201 Polypropylene #2 Bag Filter, 178mm x 813mm, 1 Micron
BF205 Polypropylene #2 Bag Filter, 178mm x 813mm, 5 Micron
BF210 Polypropylene #2 Bag Filter, 178mm x 813mm, 10 Micron
BF225 Polypropylene #2 Bag Filter, 178mm x 813mm, 25 Micron
BF250 Polypropylene #2 Bag Filter, 178mm x 813mm, 50 Micron
BF2100 Polypropylene #2 Bag Filter, 178mm x 813mm, 100 Micron
BF2200 Polypropylene #2 Bag Filter, 178mm x 813mm, 200 Micron



Polypropylene #3 & #4 Bag Filters Available On Request

FILTER VALVE HEADS

Manual Filter Heads Held In Stock

- F-65-A Manual valve head - tank diameter 6" - 12" with flows up to 4m3/hr. 1" connections
- F-56-D Manual valve head - tank diameter 10" - 24" with flows up to 10m3/hr. 2" connections

Automatic Filtration Heads Held In Stock

- MT-F71B1 Automatic Filter 3/4"M inlet/outlet, flow 2m3/h, top mount, time type, New Model 53502, Martinn brand
- MT-F67C1 Automatic Filter 1"F inlet/outlet, flow 4m3/h, top mount, no handle, New model 53504, Timer
- MT-F67C3 Automatic filter Head 1" in/outlet - suitable for 6" to 14" filter heads, flows to 4m3/hr - meter
- 75A1/A3 Automatic filter Head 2" in/outlet - suitable for 16" to 24" filter heads, flows to 10m3/hr - Timer
- MT-F75A3 Automatic Filter 2"M inlet/outlet, flow 10m3/h, top mount, New model 53610, Martinn brand - Meter
- MT-F99B1 Automatic Filter 2"M inlet/outlet, flow 15m3/h, side mount, Timer, New model 53515, Martinn brand A3 - Meter based

Larger range available - ask us for details

Softener Heads

- MT-F65B1 Automatic softener 3/4"F inlet/outlet, flow 2m3/h, time type, Down flow, New model 63502, Martinn brand
- MT-F65B3 Automatic softener 3/4"F inlet/outlet, flow 2m3/h, volume type, Down flow, New model 63602, Martinn brand
- MT-F63B1 Automatic softener 1"M inlet/outlet, flow 4m3/h, time type, with handle, New model 63504S, Martinn brand
- MT-F63B3 Automatic softener 1"M inlet/outlet, flow 4m3/h, volume type, with handle, New model 63604S, Martinn brand
- MT-F74A3 Automatic Filter 2"M inlet/outlet, flow 10m3/h, top mount, New model 53610, Martinn brand
- MT-F99B1 Automatic Filter 2"M inlet/outlet, flow 15m3/h, side mount, Timer, New model 53515, Martinn brand

Larger range available - ask us for details

Contact us about what we can supply in regards to auto filter valve heads - we also have access to Autotrol & Clack



FRP Pressure Vessel Tank

Avanale's range of high quality FRP water treatment vessels utilise PE or FRP liner and are suitable for residential, commercial and industrial softening and filtering systems. With perfect performance and corrosion resistance, the vessels can be sufficiently equipped with mechanical control valves to meet the expectations and requirements of our clients.

- # Filament wound with epoxy resin
- # Full choice of pressure vessels available up to 73" Diameter with 94" height
- # Top & Bottom Openings available for 16" through to 63" Tanks
- # Maximum Operating Pressure : 150PSI
- # Maximum Operating Temperature : 49°C
- # 100% Corrosion resistant
- # Burst Pressure : 600PSI
- # Fatigue Cycle : 100,000 Times
- # Low Installation & maintenance



FRP Pressure Tanks

0717FRP25	7" x 17" Blue FRP Tank with 2½" Top Opening, 150PSI (10Bar), 8.5L
0735FRP25	7" x 35" Blue FRP Tank with 2½" Top Opening, 150PSI (10Bar), 19.1L
0835FRP25	8" x 35" Blue FRP Tank with 2½" Top Opening, 150PSI (10Bar), 23.6L
0844FRP25	8" x 44" Blue FRP Tank with 2½" Top Opening, 150PSI (10Bar), 31.3L
0917FRP25	9" x 17" Blue FRP Tank with 2½" Top Opening, 150PSI (10Bar), 13.2L
0935FRP25	9" x 35" Blue FRP Tank with 2½" Top Opening, 150PSI (10Bar), 31.4L
0948FRP25	9" x 48" Blue FRP Tank with 2½" Top Opening, 150PSI (10Bar), 44.6L
1017FRP25	10" x 17" Blue FRP Tank with 2½" Top Opening, 150PSI (10Bar), 16.5L
1035FRP25	10" x 35" Blue FRP Tank with 2½" Top Opening, 150PSI (10Bar), 38.6L
1054FRP25	10" x 54" Blue FRP Tank with 2½" Top Opening, 150PSI (10Bar), 62L
1252FRP25	12" x 52" Blue FRP Tank with 2½" Top Opening, 150PSI (10Bar), 84.8L
1354FRP25	13" x 54" Blue FRP Tank with 2½" Top Opening, 150PSI (10Bar), 104L
1465FRP25	14" x 65" Blue FRP Tank with 2½" Top Opening, 150PSI (10Bar), 145.6L
1665FRP25	16" x 65" Blue FRP Tank with 2½" Top Opening, 150PSI (10Bar), 187.7L

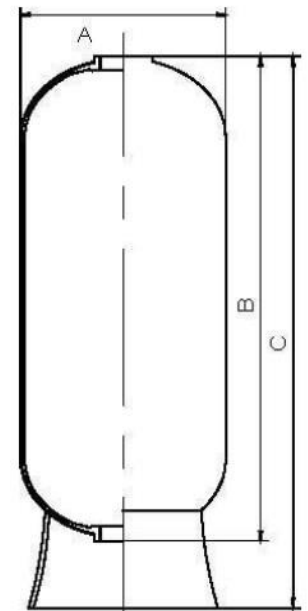
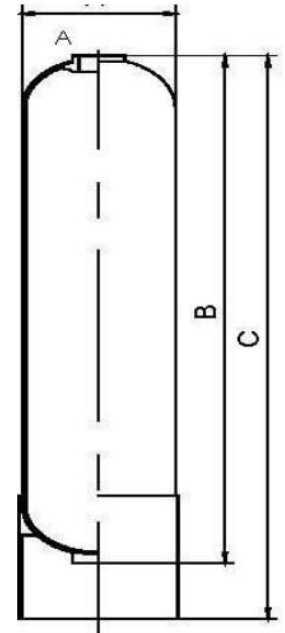


1465FRP4T	14" x 65" Blue FRP Tank with 4" Top Opening, 150PSI (10Bar), 145.6L
1665FRP4T	16" x 65" Blue FRP Tank with 4" Top Opening, 150PSI (10Bar), 187.7L
1865FRP4T	18" x 65" Blue FRP Tank with 4" Top Opening, 150PSI (10Bar), 237L
2162FRP4T	21" x 62" Blue FRP Tank with 4" Top Opening, 150PSI (10Bar), 312L
2162FRP4TB	21" x 62" Blue FRP Tank with 4" Top & Bottom Opening, 150PSI (10Bar), 312L
2472FRP4T	24" x 72" Blue FRP Tank with 4" Top Opening, 150PSI (10Bar), 471L
2472FRP4TB	24" x 72" Blue FRP Tank with 4" Top & Bottom Opening, 150PSI (10Bar), 471L
3072FRP4T	30" x 72" Blue FRP Tank with 4" Top Opening, 150PSI (10Bar), 728L
3072FRP4TB	30" x 72" Blue FRP Tank with 4" Top & Bottom Opening, 150PSI (10Bar), 728L
3672FRP4T	36" x 72" Blue FRP Tank with 4" Top Opening, 150PSI (10Bar), 1023L
3672FRP4TB	36" x 72" Blue FRP Tank with 4" Top & Bottom Opening, 150PSI (10Bar), 1023L



3672FRP6TB	36"x72" Blue FRP Tank with 6" Flanged Top & Bottom Opening. 150PSI (10Bar), 1023L
4272FRP6TB	42"x72" Blue FRP Tank with 6" Flanged Top & Bottom Opening. 150PSI (10Bar), 1389L
4872FRP6TB	48"x72" Blue FRP Tank with 6" Flanged Top & Bottom Opening. 150PSI (10Bar), 1743L
6086FRP6TB	60"x86" Blue FRP Tank with 6" Flanged Top & Bottom Opening. 150PSI (10Bar), 3179L
6370FRP6TB	63"x70" Blue FRP Tank with 6" Flanged Top & Bottom Opening. 150PSI (10Bar), 2580L
6386FRP6TB	63"x86" Blue FRP Tank with 6" Flanged Top & Bottom Opening. 150PSI (10Bar), 3500L

Part No.	Size		Liner	Opening		A Diameter		B Height No Base		C Height With Base		Capacity	
	(In)	(mm)		Top	Bot	(In)	(mm)	(In)	(mm)	(In)	(mm)	G	L
WE0713FRP25	07×13	170×331	PE	2.5" T	N/A	7	181	13	331	13.2	335	1.6	6.3
WE0717FRP25	07×17	170×430	PE	2.5" T	N/A	7	181	17	430	17.2	437	2.2	8.5
WE0735FRP25	07×35	170×890	PE	2.5" T	N/A	7	181	35	890	35.3	896	5.1	19.1
WE0744FRP25	07×44	170×1115	PE	2.5" T	N/A	7	181	43.9	1115	44.2	1123	6.4	24.3
WE0813FRP25	08×13	200×331	PE	2.5" T	N/A	8	206	13	331	13.2	335	2.1	7.9
WE0817FRP25	08×17	200×430	PE	2.5" T	N/A	8	206	17	430	17.2	437	2.8	10.5
WE0835FRP25	08×35	200×890	PE	2.5" T	N/A	8	206	35	890	35.3	896	6.2	23.6
WE0844FRP25	08×44	200×1115	PE	2.5" T	N/A	8	206	43.9	1115	44.2	1123	8.3	31.3
WE0917FRP25	09×17	220×430	PE	2.5" T	N/A	9	232	17	430	17.2	437	3.5	13.2
WE0935FRP25	09×35	220×890	PE	2.5" T	N/A	9	232	35	890	35.3	896	8.3	31.4
WE0942FRP25	09×42	220×1067	PE	2.5" T	N/A	9	232	42	1067	42.3	1074	10	38.5
WE0948FRP25	09×48	220×1221	PE	2.5" T	N/A	9	232	48	1221	48.5	1228	12	44.6
WE1017FRP25	10×17	240×430	PE	2.5" T	N/A	10	257	17	430	17.2	437	4.4	16.5
WE1035FRP25	10×35	240×890	PE	2.5" T	N/A	10	257	35	890	35.3	896	10	38.6
WE1044FRP25	10×44	240×1115	PE	2.5" T	N/A	10	257	43.9	1115	44.5	1130	13	49.6
WE1054FRP25	10×54	240×1376	PE	2.5" T	N/A	10	257	54.1	1376	54.7	1390	16	62
WE1248FRP25	12×48	300×1223	PE	2.5" T	N/A	12	308	48.1	1223	48.5	1233	20	77.3
WE1252FRP25	12×52	300×1332	PE	2.5" T	N/A	12	308	52.4	1332	52.8	1342	22	84.8
WE1265FRP25	12×65	300×1640	PE	2.5" T	N/A	12	308	64.6	1640	64.9	1650	28	106
WE1344FRP25	13×44	330×1132	PE	2.5" T	N/A	13	334	44.6	1132	44.9	1142	22	82.9
WE1354FRP25	13×54	330×1390	PE	2.5" T	N/A	13	334	54.7	1390	55.1	1400	28	104
WE1465FRP25	14×65	350×1661	PE	2.5" T	N/A	14	360	65.4	1661	65.7	1670	39	146
WE1465FRP4T			PE	4" T	N/A	14	360	65.4	1661	65.7	1670	39	146
WE1665FRP25	16×65	400×1662	PE	2.5" T	N/A	16	410	65.4	1662	65.8	1672	50	188
WE1665FRP4T			PE	4" T	N/A	16	410	65.4	1662	65.8	1672	50	188
WE1665FRP4T4B		PE	4" T	4" T	16	410	64.6	1640	72	1830	50	188	
WE1865FRP4T	18×65	450×1640	PE	4" T	N/A	19	470	64.6	1640	65.8	1672	63	237
WE1865FRP4T4B			PE	4" T	4" T	19	470	64.6	1640	72	1830	63	237
WE2162FRP4T	21×62	530×1600	PE	4" T	N/A	22	550	63	1600	75.1	1910	82	312
WE2162FRP4T4B			PE	4" T	4" T	22	550	63	1600	75.1	1910	82	312
WE2472FRP4T	24×72	600×1830	PE	4" T	N/A	24	620	72.1	1830	84.6	2150	124	471
WE2472FRP4T4B			PE	4" T	4" T	24	620	72.1	1830	84.6	2150	124	471
WE3072FRP4T	30×72	750×1830	PE	4" T	N/A	31	775	72.1	1830	84.6	2150	192	728
WE3072FRP4T4B			PE	4" T	4" T	31	775	72.1	1830	84.6	2150	192	728
WE3672FRP4T	36×72	900×1830	PE	4" T	N/A	36	925	72.1	1830	84.6	2150	270	1023
WE3672FRP4T4B			PE	4" T	4" T	36	925	72.1	1830	84.6	2150	270	1023
WE363672FRP6T6		PE	6" F	6" F	36	925	76.4	1940	88.9	2260	270	1023	
WE4272FRP6T6B	42×72	1070×1800	PE	6" F	6" F	42	1070	76.8	1950	89.4	2270	367	1389
WE4872FRP6T6B	48×72	1200×1800	PE	6" F	6" F	48	1225	76.8	1950	89.4	2270	461	1743
WE6086FRP6T6B	60×86	1500×2150	PE	6" F	6" F	60	1530	84.7	2150	96.3	2453	840	3179
WE6370FRP6T6B	63×70	1620×1780	PE	6" F	6" F	64	1620	70.1	1780	82.7	2100	682	2580
WE6386FRP6T6B	63×86	1620×2150	PE	6" F	6" F	64	1620	84.7	2150	96.3	2453	925	3500



Distributors for Commercial / Industrial Systems

-H2805	Bayonet Top Screen to suit 1.05" (20mm) Riser - Suits Up To 12" Vessel
-H1316T	Bayonet Top Screen to suit 13/16" Riser Upper Screen to suit 1.05 Riser In/Out Heads with 1" ports
-H2809	Bayonet Top Stack Distributor to suit 1.05 Riser - Suits Up To 16" Vessel
-H1316B	Bottom Distributor Basket to suit 13/16" Riser
-H2807	Bottom Distributor Basket to suit 1.05 (20mm) Riser - Suits Up To 12" Vessel
-H2810	Bottom Distributor Stack to suit 1.05 Riser (20mm) Riser - Suits Up To 16" Vessel
-1040021	210 Turbulator 1.050" Riser
-H182	Top stack Distributor to suit 1-1/2" (40mm) Riser - Suits 12" - 36" Vessel
-H182-1	Top stack Distributor to suit 1-1/2" (40mm) Riser- Suits 12" - 36" Vessel
-H2808	Bottom Stack Distributor to suit 1½" (40mm) Riser - Suits 12" - 36" Vessel
-HD234	Top Stack Distributor to suit 2" (50mm) Riser - Suits 30"-60" Vessel
-RT1316-65	13/16" Riser Tube 60" Long
-RT020-80	¾" x 800mm Long Riser Tube
-RT020-115	¾" x 1150mm Long Riser Tube
-RT020-129	¾" x 1290mm Long Riser Tube
-RT020-152	¾" x 1520mm Long Riser Tube
-RT040-200	1½" x 2000mm Long Riser Tube
-RT050-200	2" x 2000mm Long Riser Tube



-H2805



-H2807



-H182



-H2808



-HD234

Top Mount Distributor 6 Laterals

-HU6260L	1½" Top Mount Hub & Lat (260mm x 82mm x 53mm), Slot Size 0.2/0.25/0.4mm - Suits 16"-18" Vessel
-HU6370L	1½" Top Mount Hub & Lat (370mm x 136mm x 53mm), Slot Size 0.2/0.25/0.4mm - Suits 18"-21" Vessel
-HU6450L	1½" Top Mount Hub & Lat (450mm x 182mm x 53mm), Slot Size 0.2/0.25/0.4mm - Suits 24" Vessel
-HU6600L	1½" Top Mount Hub & Lat (620mm x 260mm x 53mm), Slot Size 0.2/0.25/0.4mm - Suits 30" Vessel
-HU6700L	1½" Top Mount Hub & Lat (710mm x 330mm x 53mm), Slot Size 0.2/0.25/0.4mm - Suits 36"-42" Vessel



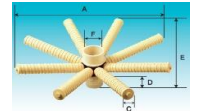
Top Mount Distributor 12 Laterals

-HU6700L-2	3" Top Mount Hub & Lat (710mm x 330mm x 53mm), Slot Size 0.2/0.25/0.4mm - Suits 36"-42" Vessel
-HU6900L-2	3" Top Mount Hub & Lat (930mm x 410mm x 53mm), Slot Size 0.2/0.25/0.4mm - Suits 48" Vessel



Top Mount Distributor 8 Laterals, 3" Riser Tube

-HU8190-1	3" Top Mount Hub & Lat (512mm x 190mm x 53mm), Slot Size 0.2/0.25/0.4mm - Suits 24" Vessel
-HU8256-1	3" Top Mount Hub & Lat (630mm x 256mm x 53mm), Slot Size 0.2/0.25/0.4mm - Suits 30" Vessel
-HU8318-1	3" Top Mount Hub & Lat (750mm x 318mm x 53mm), Slot Size 0.2/0.25/0.4mm - Suits 36" Vessel
-HU8380-1	3" Top Mount Hub & Lat (870mm x 380mm x 53mm), Slot Size 0.2/0.25/0.4mm - Suits 40"-42" Vessel
-HU8445-1	3" Top Mount Hub & Lat (980mm x 445mm x 53mm), Slot Size 0.2/0.25/0.4mm - Suits 48" Vessel
-HU8564-1	3" Top Mount Hub & Lat (1218mm x 564mm x 53mm), Slot Size 0.2/0.25/0.4mm - Suits 56" - 65" Vessel
-HU8564L-1	3" Top Mount Hub & Lat (1345mm x 640mm x 53mm), Slot Size 0.2/0.25/0.4mm - Suits 65" - 80" Vessel



Top Mount Distributor 16 Laterals, 3" Riser Tube (Available on Request)

-HU8190-2	3" Top Mount Hub & Lat (512mm x 190mm x 53mm), Slot Size 0.2/0.25/0.4mm - Suits 24" Vessel
-HU8256-2	3" Top Mount Hub & Lat (630mm x 256mm x 53mm), Slot Size 0.2/0.25/0.4mm - Suits 30" Vessel
-HU8318-2	3" Top Mount Hub & Lat (750mm x 318mm x 53mm), Slot Size 0.2/0.25/0.4mm - Suits 36" Vessel
-HU8380-2	3" Top Mount Hub & Lat (870mm x 380mm x 53mm), Slot Size 0.2/0.25/0.4mm - Suits 40"-42" Vessel
-HU8445-2	3" Top Mount Hub & Lat (980mm x 445mm x 53mm), Slot Size 0.2/0.25/0.4mm - Suits 48" Vessel
-HU8564-2	3" Top Mount Hub & Lat (1218mm x 564mm x 53mm), Slot Size 0.2/0.25/0.4mm - Suits 56" - 65" Vessel
-HU8564L-2	3" Top Mount Hub & Lat (1345mm x 640mm x 53mm), Slot Size 0.2/0.25/0.4mm - Suits 65" - 80" Vessel



4" Threaded Side Mount Top Diffuser (Available on Request)

-H5671	4" Side Mount Diffuser (180mm x 400mm x 88mm), Slot Size 0.2/0.4mm - Suits 14"-30" Vessel
-H5671L	4" Side Mount Diffuser (242mm x 472mm x 88mm), Slot Size 0.2/0.4mm - Suits 30"-40" Vessel
-H5672L	4" Side Mount Diffuser (310mm x 540mm x 88mm), Slot Size 0.2/0.4mm - Suits 36"-40" Vessel



-H5671-N	4" Side Mount Diffuser (180mm x 400mm x 88mm), Slot Size 0.2/0.4mm - Suits 14"-30" Vessel
-H5671L-N	4" Side Mount Diffuser (242mm x 472mm x 88mm), Slot Size 0.2/0.4mm - Suits 30"-40" Vessel
-H5672L-N	4" Side Mount Diffuser (310mm x 540mm x 88mm), Slot Size 0.2/0.4mm - Suits 36"-40" Vessel



Side Mount Distributor 6 Laterals (Available on Request)

-HD6260L	260mm x 82mm x 53mm, Slot Size 0.2/0.25/0.4mm - Suits 16"-18" Vessel
-HD6370L	370mm x 136mm x 53mm, Slot Size 0.2/0.25/0.4mm - Suits 18"-21" Vessel
-HD6450L	450mm x 182mm x 53mm, Slot Size 0.2/0.25/0.4mm - Suits 24" Vessel
-HD6600L	620mm x 260mm x 53mm, Slot Size 0.2/0.25/0.4mm - Suits 30" Vessel
-HD6700L	710mm x 330mm x 53mm, Slot Size 0.2/0.25/0.4mm - Suits 36"-42" Vessel
-HD6900L	930mm x 410mm x 53mm, Slot Size 0.2/0.25/0.4mm - Suits 48" Vessel

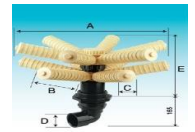


-HD6260L-N	260mm x 82mm x 53mm, Slot Size 0.2/0.25/0.4mm - Suits 16"-18" Vessel
-HD6370L-N	370mm x 136mm x 53mm, Slot Size 0.2/0.25/0.4mm - Suits 18"-21" Vessel
-HD6450L-N	450mm x 182mm x 53mm, Slot Size 0.2/0.25/0.4mm - Suits 24" Vessel
-HD6600L-N	620mm x 260mm x 53mm, Slot Size 0.2/0.25/0.4mm - Suits 30" Vessel
-HD6700L-N	710mm x 330mm x 53mm, Slot Size 0.2/0.25/0.4mm - Suits 36"-42" Vessel
-HD6900L-N	930mm x 410mm x 53mm, Slot Size 0.2/0.25/0.4mm - Suits 48" Vessel



Side Mount Distributor 12 Laterals (Available on Request)

-HD6700L-2	710mm x 330mm x 53mm, Slot Size 0.2/0.25/0.4mm - Suits 36"-42" Vessel
-HD6900L-2	930mm x 410mm x 53mm, Slot Size 0.2/0.25/0.4mm - Suits 48" Vessel



-HD6700L-2N	710mm x 330mm x 53mm, Slot Size 0.2/0.25/0.4mm - Suits 36"-42" Vessel
-HD6900L-2N	930mm x 410mm x 53mm, Slot Size 0.2/0.25/0.4mm - Suits 48" Vessel



6" Flanged Top Mount Diffuser

-H172	260mm x 360mm x 140mm, Slot Size 0.25mm - Suits 36"-48" Vessel
-H173	330mm x 420mm x 140mm, Slot Size 0.25mm - Suits 48"-64" Vessel
-H174	430mm x 520mm x 140mm, Slot Size 0.25mm - Suits 64"-80" Vessel

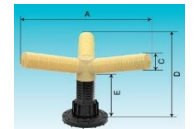


-H175	340mm x 440mm x 140mm, Slot Size 0.25mm - Suits 40"-80" Vessel
-------	--

-HD10300F	240mm x 440mm x 140mm, Slot Size 0.25/0.4mm - Suits 36"-60" Vessel
-HD10400F	240mm x 540mm x 140mm, Slot Size 0.25/0.4mm - Suits 60"-80" Vessel

6" Flanged Top Mount Diffuser 3 Laterals

-HD8180	460mm x 180mm x 85mm, Slot Size 0.2/0.4mm - Suits 36"-48" Vessel
-HD8230	560mm x 230mm x 85mm, Slot Size 0.2/0.4mm - Suits 48"-64" Vessel
-HD8280	660mm x 280mm x 85mm, Slot Size 0.2/0.4mm - Suits 64"-80" Vessel



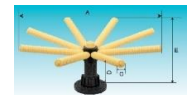
6" Flanged Top Mount Diffuser For Fluidized Bed

-HD11250F	350mm x 140mm, Slot Size 0.25mm - Suits 30"-48" Vessel
-HD11300F	400mm x 140mm, Slot Size 0.25mm - Suits 40"-60" Vessel
-HD11400F	500mm x 140mm, Slot Size 0.25mm - Suits 48"-80" Vessel



Bottom Mount Distributor 8 Laterals

-HD8190-1	3" Bottom Mount Hub & Lat (512mm x 190mm x 53mm), Slot Size 0.2/0.25mm - Suits 24" Vessel
-HD8256-1	3" Bottom Mount Hub & Lat (630mm x 256mm x 53mm), Slot Size 0.2/0.25mm - Suits 30" Vessel
-HD8318-1	3" Bottom Mount Hub & Lat (750mm x 318mm x 53mm), Slot Size 0.2/0.25mm - Suits 36" Vessel
-HD8380-1	3" Bottom Mount Hub & Lat (870mm x 380mm x 53mm), Slot Size 0.2/0.25mm - Suits 40"-42" Vessel
-HD8445-1	3" Bottom Mount Hub & Lat (980mm x 445mm x 53mm), Slot Size 0.2/0.25mm - Suits 48" Vessel
-HD8564-1	3" Bottom Mount Hub & Lat (1218mm x 564mm x 53mm), Slot Size 0.2/0.25mm - Suits 56"-65" Vessel
-HD8564L-1	3" Bottom Mount Hub & Lat (1348mm x 640mm x 53mm), Slot Size 0.2/0.25mm - Suits 65"-80" Vessel



Bottom Mount Distributor 16 Laterals

-HD8190-2	3" Bottom Mount Hub & Lat (512mm x 190mm x 53mm), Slot Size 0.2/0.25mm - Suits 24" Vessel
-HD8256-2	3" Bottom Mount Hub & Lat (630mm x 256mm x 53mm), Slot Size 0.2/0.25mm - Suits 30" Vessel
-HD8318-2	3" Bottom Mount Hub & Lat (750mm x 318mm x 53mm), Slot Size 0.2/0.25mm - Suits 36" Vessel
-HD8380-2	3" Bottom Mount Hub & Lat (870mm x 380mm x 53mm), Slot Size 0.2/0.25mm - Suits 40"-42" Vessel
-HD8445-2	3" Bottom Mount Hub & Lat (980mm x 445mm x 53mm), Slot Size 0.2/0.25mm - Suits 48" Vessel
-HD8564-2	3" Bottom Mount Hub & Lat (1218mm x 564mm x 53mm), Slot Size 0.2/0.25mm - Suits 56"-65" Vessel
-HD8564L-2	3" Bottom Mount Hub & Lat (1348mm x 640mm x 53mm), Slot Size 0.2/0.25mm - Suits 65"-80" Vessel



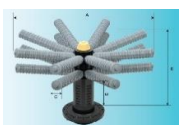
Bottom Mount Distributor 8 Laterals For Filtration

-HD8190-1F	3" Bottom Mount Hub & Lat (512mm x 190mm x 53mm), Slot Size 0.2/0.25mm - Suits 24" Vessel
-HD8256-1F	3" Bottom Mount Hub & Lat (630mm x 256mm x 53mm), Slot Size 0.2/0.25mm - Suits 30" Vessel
-HD8318-1F	3" Bottom Mount Hub & Lat (750mm x 318mm x 53mm), Slot Size 0.2/0.25mm - Suits 36" Vessel
-HD8380-1F	3" Bottom Mount Hub & Lat (870mm x 380mm x 53mm), Slot Size 0.2/0.25mm - Suits 40"-42" Vessel
-HD8445-1F	3" Bottom Mount Hub & Lat (980mm x 445mm x 53mm), Slot Size 0.2/0.25mm - Suits 48" Vessel
-HD8564-1F	3" Bottom Mount Hub & Lat (1218mm x 564mm x 53mm), Slot Size 0.2/0.25mm - Suits 56"-65" Vessel
-HD8564L-1F	3" Bottom Mount Hub & Lat (1348mm x 640mm x 53mm), Slot Size 0.2/0.25mm - Suits 65"-80" Vessel



Bottom Mount Distributor 16 Laterals For Filtration

-HD8190-2F	3" Bottom Mount Hub & Lat (512mm x 190mm x 53mm), Slot Size 0.2/0.25mm - Suits 24" Vessel
-HD8256-2F	3" Bottom Mount Hub & Lat (630mm x 256mm x 53mm), Slot Size 0.2/0.25mm - Suits 30" Vessel
-HD8318-2F	3" Bottom Mount Hub & Lat (750mm x 318mm x 53mm), Slot Size 0.2/0.25mm - Suits 36" Vessel
-HD8380-2F	3" Bottom Mount Hub & Lat (870mm x 380mm x 53mm), Slot Size 0.2/0.25mm - Suits 40"-42" Vessel
-HD8445-2F	3" Bottom Mount Hub & Lat (980mm x 445mm x 53mm), Slot Size 0.2/0.25mm - Suits 48" Vessel
-HD8564-2F	3" Bottom Mount Hub & Lat (1218mm x 564mm x 53mm), Slot Size 0.2/0.25mm - Suits 56"-65" Vessel
-HD8564L-2F	3" Bottom Mount Hub & Lat (1348mm x 640mm x 53mm), Slot Size 0.2/0.25mm - Suits 65"-80" Vessel



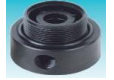
Tank Diameter		Opening	Distributor	
(mm)	(inch)		Top distributor	Bottom distributor
200	7"-10"	2.5" Top opening	WE-H2805 or WE-H2801	WE-H2807 or WE-H2803
250		2.5" Top opening	WE-H2805 or WE-H2801	WE-H2807 or WE-H2803
300	12"-13"	2.5" Top opening	WE-H2809	WE-H2810
350	14"	2.5" Top opening	WE-H2809	WE-H2810
400	16"	2.5" Top opening	WE-H2809	WE-H2810
450	18"	2.5" Top opening	WE-H2809	WE-H2810
400	16"	4" top opening	WE-H182	WE-HU8260L
		4"top and bottom opening	WE-H5671	WE-HD8260L
450	18"	4" top opening	WE-H182	WE-HU8370L
		4"top and bottom opening	WE-H5671	WE-HD8370L
		4" threaded top and 6" flanged bottom opening	WE-H5671	WE-H9905 + WE-HD8370L
500	20"	4" top opening	WE-H182	WE-HU8370L
		4"top and bottom opening	WE-H5671	WE-HD8370L
		4" threaded top and 6" flanged bottom opening	WE-H5671	WE-H9905 + WE-HD8370L
600	24"	4" top opening	WE-H182	WE-HU8450L
		4"top and bottom opening	WE-H5671	WE-HD8450L
		4" threaded top and 6" flanged bottom opening	WE-H5671	WE-HD8190-1 or WE-HD8190-2
		6" top opening flanged	N/A	WE-HU8190-1 or WE-HU8190-2
750-800	30"-32"	6" top and bottom opening flanged	WE-H172 or WE-HD8180	WE-HD8190-1 or WE-HD8190-2
		4" top opening	WE-H182	WE-HU8600L
		4"top and bottom opening	WE-H5671 or WE-H5671L	WE-HD8600L
		4" threaded top and 6" flanged bottom opening	WE-H5671 or WE-H5671L	WE-HD8256-1 or WE-HD8256-2
900	36"	6" top opening flanged	N/A	WE-HU8256-1 or WE-HU8256-2
		6" top and bottom opening flanged	WE-H172 or WE-HD8180	WE-HD8256-1 or WE-HD8256-2
		4" top opening	WE-H182	WE-HU8700L or WE-HU8700L-2
		4"top and bottom opening	WE-H5671L or WE-H5672L	WE-HD8700L or WE-HD8700L-2
1000	40"	4" threaded top and 6" flanged bottom opening	WE-H5671L or WE-H5672L	WE-HD8318-1 or WE-HD8318-2
		6" top opening flanged	N/A	WE-HU8318-1 or WE-HU8318-2
		6" top and bottom opening flanged	WE-H172 or WE-HD8180	WE-HD8318-1 or WE-HD8318-2
		4" top opening	WE-H182	WE-HU8700L or WE-HU8700L-2
1100	42"	4"top and bottom opening	WE-H5671L or WE-H5672L	WE-HD6700L or WE-HD6700L-2
		6" top opening flanged	N/A	WE-HU8380-1 or WE-HU8380-2
		6" top and bottom opening flanged	WE-H173 or WE-HD8230	WE-HD8380-1 or WE-HD8380-2
		4" top opening	WE-H182	WE-HU8700L or WE-HU8700L-2
1200	48"	4"top and bottom opening	WE-H5671L or WE-H5672L	WE-HD6700L or WE-HD6700L-2
		6" top opening flanged	N/A	WE-HU8445-1 or HU8445-2
		6" top and bottom opening flanged	WE-H173 or WE-HD8230	WE-HD8445-1 or HD8445-2
		4" top opening	WE-H182	WE-HU8900L or WE-HU8900L-2
1500	60"	4"top and bottom opening	WE-H5671L or WE-H5672L	WE-HD6900L or WE-HD6900L-2
		6" top opening flanged	N/A	WE-HU8564-1 or WE-HU8564-2
1575	63"	6" top and bottom opening flanged	WE-H173 or WE-HD8230	WE-HD8564-1 or WE-HD8564-2
		6" top opening flanged	N/A	WE-HU8564-1 or WE-HU8564-2
1600	65"	6" top and bottom opening flanged	WE-H174 or WE-HD8280	WE-HD8564-1 or WE-HD8564-2
		6" top opening flanged	N/A	WE-HU8564L-1 or WE-HU8564L-2
		6" top and bottom opening flanged	WE-H174 or WE-HD8280	WE-HD8564L-1 or WE-HD8564L-2

In / Out Tank Heads

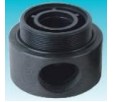
-H9901	In / Out Head with 1" NPTF Ports
-H9901-104	In / Out Head with ¾" NPTF Ports
-H9902	In / Out Head with 2" Ports to suit 4" Tank



-H9901



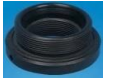
-H9901-104



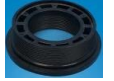
-H9902

Adaptors, Closures & Flanges

-H9903B	4" Threaded x 2½" - Threaded Tank Adaptor
-H9904	6" Flange Adaptor to 4" Inner Threaded adaptor to suit Avanale Tanks
-H9905	6" - 4" Flange Adaptor to suit Avanale Tanks
-H9914	4" Tank Threaded Enclosure ABS/PPO
-H9913	6" Flange, Closure ABS/PPO



-H9903B



-H9904



-H9913

Brine Valves & Tanks

BPU6x48	Brine Pick Up Tube with Strainer
-MT-H9909-1	Brine Pick Up J-Tube Suit (Autotrol, Fleck & Clack Valves)
-MT-H9907-N	Brine Pick Up With Float To Suit Up To 16" Softener Brine systems
-MT-H9906	High Flow Brine System to suit 21"-36" Softener
BT70	Brine Tank, 370mm x 370mm x 680mm, 70L
BT100	Brine Tank, 370mm x 370mm x 680mm, 100L
BT140	Brine Tank, 370mm x 370mm x 1085mm, 140L
BT200	Brine Tank, 370mm x 370mm x 680mm, 200L
BT350	350L
BT500 & BT1000	500L & 1000L

Other Sizes Available On Request



Nozzles

-HD201	Outlet Flow 1T/H, Backwash Flow 0.3-0.6T/H, PP
-HD202	Outlet Flow 0.5T/H, Backwash Flow 0.3-0.6T/H, ABS
-HD224	Outlet Flow 1T/H, Backwash Flow 0.3-0.6T/H, PP
-HD227	Outlet Flow 0.3T/H, Backwash Flow 0.3-0.6T/H, PP
-HD228	Outlet Flow 1T/H, Backwash Flow 0.3-0.6T/H, PP



-HD201



-HD202



-HD224



-HD227



-HD228

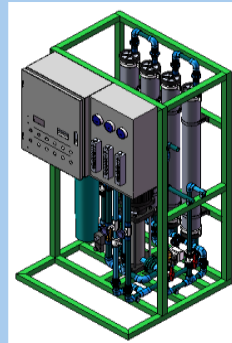
AVRO Reverse Osmosis Units & Ultrafiltration Units - Brackish & Sea Water Units

Avanale design and oversee the manufacture of the high quality AVRO Series Reverse Osmosis Systems. Designed in Australia and manufactured under strict quality controls overseen by Avanale, they cover a wide production range from **125 l/hr to 50,000 l/h**. They feature easy installation, low maintenance and spare parts are kept in our Brisbane warehouse. The AVRO units utilise high quality components as well as being factory and industry tested to provide years of trouble free service.

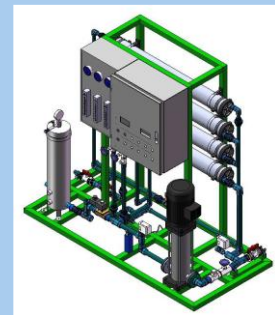
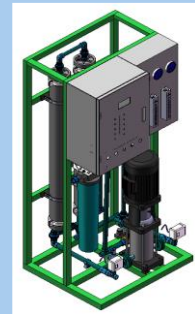
Standard Features on the RO's Included But Not Limited To

- # Stainless Steel Frame
- # Thin Film Composite Membranes
- # Stainless Steel RO Vessels Seamless/FRP Housing
- # PLC Control or Standard Basic Controller
- # Power On/Off Switch
- # 1 or 5 Micron Pre-Filter
- # Product Water Flow Meter
- # Concentrate Water Flow Meter
- # Recirculation Standard on 6000 system & Higher
- # High Pressure Pump Inlet & Outlet Pressure Gauges
- # Concentrate Outlet Pressure Gauge
- # Low Pressure Switch
- # High Pressure Switch Option
- # Sch80 Grey uPVC Pipe & Fittings, SS Optional
- # Level Control On/Off
- # Automatic Flush
- # Pre Treatment Interlock

NOTE - we can offer fully containerised "plug and play" systems
Energy Recovery utilised on Sea Water units where applicable



AVRO6000



AVRO12000

Standard models kept in stock are -

AVROMINI-ultra*	125 l/hr BWRO, Up To 2000ppm
AVROMINI*	250 l/hr BWRO, Up To 2000ppm
AVRO3000BWRO*	500 l/hr BWRO, Up To 2000ppm
AVRO6000BWRO*	1000 l/hr BWRO, Up To 2000ppm
AVRO3000BWROSS*	500 l/hr BWRO, Up To 5000ppm
AVRO6000BWROSS*	1000 l/hr BWRO, Up To 5000ppm
AVRO9000BWRO316*	1500 l/hr BWRO, Up To 2000ppm
AVRO9000BWROSS	1500 l/hr BWRO, Up To 5000ppm
AVRO12000BWRO316*	2000 l/hr BWRO, Up To 2000ppm
AVRO12000BWROSS	2000 l/hr BWRO, Up To 5000ppm

* Indicates standard stock held in Brisbane



For Detailed Information Including Sizing, Availability & Price Please Contact Our Sales Team

We have a full range of RO units skid mounted or containerised up to 50,000 l/hr. Brackish or Sea Water

We can custom design and build to suit your requirements

AVRO Reverse Osmosis Membranes

Brackish and Sea Water membranes in stock

AVROULP2540	Active Membrane Area ft ² (m ²) : 27(2.5), Operating Pressure psi (Mpa): 150(1.03) Permeate Flow GDP (T/D) : 750 (2.84), Salt Rejection (%) : 99.3
AVROULP4040	Active Membrane Area ft ² (m ²) : 85(7.9), Operating Pressure psi (Mpa) : 150(1.03) Permeate Flow GDP (T/D) : 2600 (9.8), Salt Rejection (%) : 99.3
AVROBW4040	Active Membrane Area ft ² (m ²) : 85(7.9), Operating Pressure psi (Mpa) : 225(1.55) Permeate Flow GDP (T/D) : 2400(9.1), Salt Rejection (%) : 99.6
AVROSW2540	Permeate Flow GPD (m ³ /d) : 600(2.27), Stabilized Salt Rejection (%) : 99.7
AVROSW4040	Active Membrane Area ft ² (m ²) : 85(7.9), Operating Pressure psi (Mpa) : 800(5.5) Permeate Flow GPD (m ³ /d) : 1800(6.8), Stabilized Salt Rejection (%) : 99.8

AVROSW8040 Active Membrane Area ft²(m²) : 400(3.2), Operating Pressure psi(Mpa) : 800(5.5)
Permeate Flow GPD (m³/d) : 6500(24.6), Stabilised Salt Rejection (%): 99.8

MEDIA

UBG202-3 Underbed Gravel 2mm, 20kg Bag (#6)
UBG203-6 Underbed Gravel 3mm-6mm, 20kg Bag (#5)
AVROZEO15 Zeolite 15kg Bag
WSS25 Water Softener Salt 25kg Bag
COCOCA25 Acid Washed Coconut Carbon, 25kg Bag
COCA25 Acid Washed Coal Carbon, 25kg Bag
MB420 Mixed Bed Resin 25 litre vacuum packed Box - Vacuum packed resin ensures the resin quality is not compromised
SR25 Softener Resin 25L

Other Media Available On Request

SPARES & MISC ITEMS

We also hold in stock

Flow meters

Panel style rotameters
Flow meter Panel Mount 0.2-2GPM, G 1/2", BW Style

MT-Z-3001
MT-Z-3002
MT-Z-3003
MT-Z-3004



In-line style rotameters
Flow meter In-Line, 0.006-0.06m³/h, OD20 Glue
Flow meter In-Line, 0.1-1m³/h, OD20 Glue
Flow meter In-Line, 0.1-1m³/h, OD32 Glue
Flow meter In-Line, 0.16-1.6m³/h, OD32 Glue

LZS-15-2
LZS-15-8
LZS-25-1
LZS-25-2

Pump Controller

Contact us for details

Pumps

CHL2-40-220V-SS304 CNP horizontal Pump CHL2-40, 220V/50HZ, single phase, 0.55kw, SS304, thread, SS304
CHL4-40-220V-SS304 horizontal Pump CHL4-40, 220V/50HZ, single phase, 0.75kw, thread, Eng plate, SS304
CHL4-40-220V-SS316 horizontal Pump CHL4-40, 220V/50HZ, single phase, 0.75kw, thread, Eng plate, SS316
CHLF4-50-220-SS304 CNP horizontal Pump CHLF4-50, 220V/50HZ, single phase, 1.1kw, thread, SS304
CHLF4-50-220-SS316 CNP horizontal Pump CHLF4-50, 220V/50HZ, single phase, 1.1kw, thread, SS316
CHLF4-60-220V-SS304 CNP horizontal Pump CHLF4-60, 220V/50HZ, single phase, 1.1kw, thread, SS304
CDFL2-13 Vertical Pump CDFL2-13, 220V/50HZ, single phase, 1.1kw, flange



RO Membrane pressure vessels & spares

SS-4021-12SL SS Membrane Housing, 4021 SS304 seamless 1/2NPT nylon end cap, with accessories
SS-4040-34SL-316L 4040 SS316 seamless 3/4", with accessories
SS-4040-12SL-316L 4040 SS316 seamless 1/2NPT, with accessories
MF4E600-1-WH FRP Membrane Housing 4", 600PSI, one element, end port, white colour

EDCP-40-34-1 End cap for SS membrane housing 4", 3/4"NPT, Nylon (one side)
OR-SS4040-S O-ring Small o-ring, for SS4040 membrane housing
OR-SS4040-B O-ring Big o-ring, for SS4040 membrane housing
EDCP-40E300-1234NPTMF End cap For 4" FRP Membrane Housing, 300PSI, end port, 1/2*3/4NPT
OR-4E300-S-MF Small O-ring For FRP Membrane Housing, 4", 300PSI, end port
OR-4E300-L-MF big O-ring For FRP Membrane Housing, 4", 300PSI, end port
Clamp--40 For SS membrane housing 4", full set 2pcs with strews, SS304



Reverse Osmosis controllers

AVRO46210 AVRO Standard RO Program Controller with conductivity
ROE-2260 RO Program Controller ROE-2260 Martinn Brand
ROC-8221 RO Controller 8221, Feed water: 0-2000µs/cm, permeate water: 0-200µs/cm



Inline Conductivity, TDS & Resistivity meters
I-460 Inline conductivity meter 0 - 2000us
EC-450-1 Inline Conductivity,C=1,0-2000TDS
EC-450-1-2000 Inline Conductivity,C=1,0-20000TDS
CT-3320-10 Inline Conductivity MonitorC=10.0,0-20MS/cm, AC220V
RM-430 Inline Resistivity with alarm relay
MT-DM2 Dual online conductivity meter



MT-PRG-450-S Pressure Gauge Side Mount, SS304, 0-30kg, 0-450PSI, Ø63, 1/4"PT, Silicone Oil, With Bracket, Kpa /psi display



Pressure Gauge Tube connectors
CNT-PRG-012 Connector For Pressure Gauge, Panel Mount, 25-4 Female+25-4 Male, SS

Pipe Fittings Stainless
NPE-100-316 SS316 Fittings Nipple,1"(DN25),SS316



uPVC Fittings - Hershey brand as used on our RO units
TUN-012-S80 PVC Fittings Threaded Union, 1/2", EPDM, SCH.80
TUN-034-S80 PVC Fittings Threaded Union, 3/4", EPDM, SCH.80
TUN-114-S80 PVC Fittings Threaded Union, 1-1/4", EPDM, SCH.80

Floating level switches - suitable for fresh, brackish and salt water

We hold in stock a wide range of items that are utilised in our RO units

