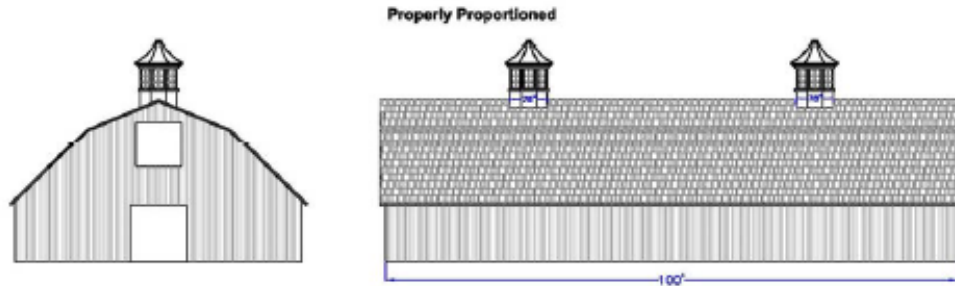
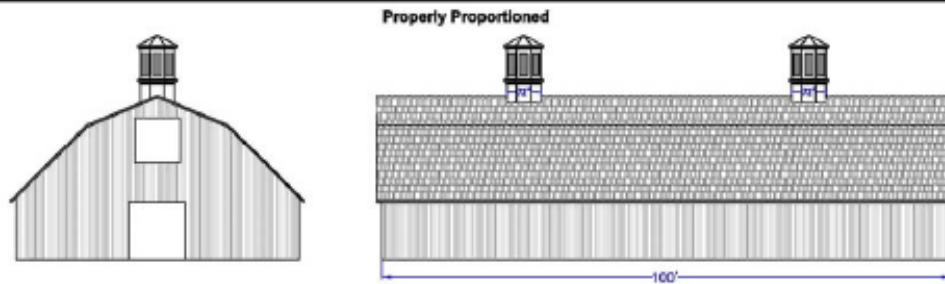


Cupola Sizing—100' Long Building

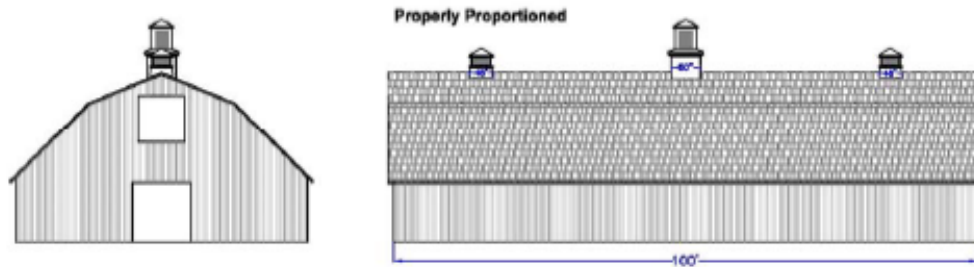
When properly sizing (1) cupola, a general rule of thumb is a minimum of 1.25" of cupola base width for every foot of unbroken roof ridge line. For (2) or (3) cupolas use 1.5" and for (4) or more cupolas use 1.75".



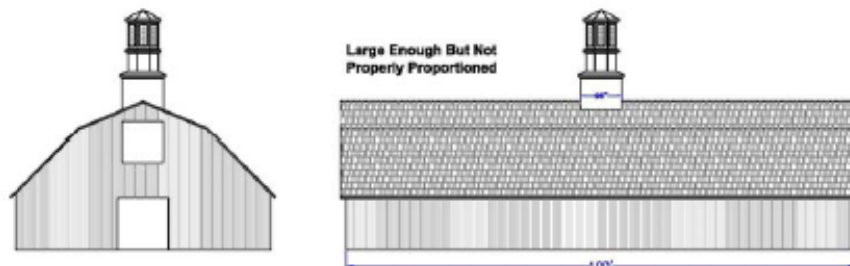
Using the rule of 1.5" of cupola base width for every foot of unbroken ridge line, (2) model 660-W cupolas are properly proportioned for this 100ft long building.



Using the rule of 1.5" of cupola base width for every foot of unbroken ridge line, (2) model 600-LPK cupolas are properly proportioned for this 100ft long building.



Using the rule of 1.5" of cupola base width for every foot of unbroken ridge line, (1) model 500-LPK cupola and (2) model 400 cupolas are properly proportioned.



Using the rule of 1.25" of cupola base width for every foot of unbroken ridge line, (1) model 680-LPK cupola doesn't appear properly proportioned.



PIEDMONT
COMPOSITES & TOOLING

33 Lewittes Road

Taylorsville, NC 28681

Phone: 828-632-8883 Fax: 828-632-5585

www.piedmontcomposites.com