

EXTRA! EXTRA!

READ ALL ABOUT IT!

NEIGHBOR HELPING NEIGHBOR

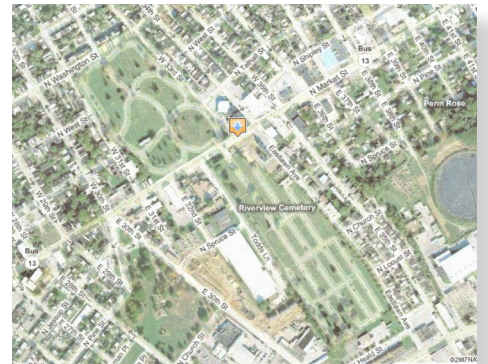
CEMETERY GRASS WILL BE CUT AND MONUMENTS TRIMMED BY PCCC IN NEXT TWO WEEKS!

Friends of Historic Riverview Cemetery (FHRC) was notified at the beginning of July that Plummer Community Correction Center offenders (PCCC) could no longer cut grass at the cemetery. During the months of July and August, FHRC Board of Directors responded to many phone calls about the tall grass. Visitors to the cemetery and neighbors were confused and upset. For nine consecutive years FHRC had depended on offenders at PCCC to cut grass and trim monuments. PCCC is located on Todd's Lane right next door to the cemetery. FHRC considers them to be our neighbor and valued Community Partner.

While grass continued to grow, we made contact with City and State officials, received a cost estimate from a private lawn company, and listened to ideas from the community (including hiring a shepherd and herd of sheep). We accepted all offers of volunteer grass cutting and focused our August project on beautifying Eastlawn Avenue. We continued with our mission: to operate and maintain Wilmington's most culturally diverse, non-profit, public cemetery, and to support its restoration and preservation.

Riverview Cemetery's 42 acres, 200 mature trees, and 4 miles of interior roadways is surrounded by thousands of home owners, small businesses and churches. The cemetery does not exist in isolation from its community. Over 36,000 people representing 19 nationalities are "at rest". And 20,000 gravesites are available for purchase. An attractive and safe cemetery draws business to it. The park-like setting comforts those who are grieving, offers a sacred natural space, and reminds us of our connections with one another. Environmentally, Riverview's grass and trees situated in the midst of highly populated city neighborhoods, provides a critical service – the absorption of stormwater run-off.

We take for granted "the ground we stand on" until something grabs our attention. The tall grass grabbed our attention and people talked with one another to find a solution. Let's not forget to express gratitude to those who labor behind the scenes and go unnoticed until there is a problem. Well cut grass and trimmed monuments by our PCCC Partner remains critical to the successful maintenance of the cemetery. We applaud their community service in the past and trust it will continue under the leadership of Warden Carole Evans, Commissioner Perry Phelps and Governor John Carney.



"Well cut grass and trimmed monuments by our PCCC Partner remains critical to the successful maintenance of the cemetery. We applaud their community service in the past and trust it will continue. . ."



VOLUNTEER PROJECT

September 9,
2017
9am – Noon

Sign in at the Mausoleum
Get tools and supplies

Project:

3-sided roofless structure on the SE side holding dirt, trees, and weeds.

Volunteers will cut down small trees, sort materials, cut weeds

Snacks & beverages provided



Community Service Certificates available



FOOD DRIVE COLLECTION

FHRC collects food items which are donated to a local food cupboard at the end of the day. Items to share: canned soup, peanut butter, tuna, beans, cereal and pasta.

For Statewide Resources to assist with Loss and Grief visit the website of the Delaware Grief Awareness Consortium:
www.degac.org

Mailing Address:
Friends of Historic Riverview Cemetery
P.O. Box 2173
Wilmington, DE 19899
www.riverviewcem.com

The mission of Friends of Historic Riverview Cemetery is to operate and maintain Wilmington's most culturally diverse, non-profit, public cemetery, and to support its restoration and preservation.

Riverview Cemetery • 3300 North Market Street • Wilmington, Delaware • (302) 762-4705



FROM *the* BOARD

CONSTRUCTION: Mechanical equipment is installed and powered. Lighting and power are ready for drywall. Power washing and sealcoating exterior building to start early September. Interior finishes, fixtures and trim will start mid-September. Windows, exterior doors and hardware are installed. The building is secure.

oops!

FENCE: Wilmington Police Department notified FHRC of a car accident that took down a section of the Market Street fence on the southeast side of the cemetery on August 23rd.



CAPITAL CAMPAIGN UPDATE

Thank you to our July and August
CONTRIBUTORS:

Raymond L. Kirkpatrick	\$300
Paul & Lena Manchester	\$ 50
Mary Skinner	\$ 50

MEMBERSHIP: Friends of Historic Riverview Cemetery is a 501c/3 non-profit charitable organization. Your membership is tax-deductible. Join with others and become a Lifetime Member this year! Visit the website for information. You may also renew annually.

ESTATE PLANNING: Consider Riverview in your Will. Gifts of stock, retirement plan assets, life insurance and real estate are all welcome. Contact us for assistance.



Lee Anderson
President



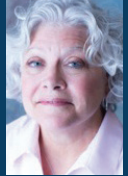
Tedd Cocker
Vice President



Mary King
Secretary



Kate Wilhere
Treasurer



Debbie Dodd
Member-at-Large

COMMUNITY OPPORTUNITIES

TAKING ON VIOLENCE EXPO
Free • Saturday, September 9 • 1 - 4 pm



Many local organization are working to turn around the culture of violence in our city. At this expo, they will discuss programs and offer opportunities for you to help. FHRC will share a table with Delaware Coalition against Gun Violence.

Keynote: Gregory Boyle author of *Tattoos on the Heart*.

Westminster Presbyterian Church
1502 W. 13th St., Wilmington, DE 19806
Free, but space is limited. Register at www.taking-on-wilmington-violence.eventbrite.com or call 302-654-5214, ext. 100

For more information about the Expo; visit www.riverviewcem.com and click on Newsletters in navigation bar at top.



DELAWARE HISTORIC CEMETERY PRESERVATION Workshop, Dover

Saturday, October 21 • 9 am - 3:30 pm.
\$40, meals included.
Christ Church Parish Hall.
Contact john.mccarthy@state.de.us or 302.739.9188.

BURIALS

The Board of Directors assisted with 1 burial in July and 1 burial in August.

CREMATION

Families who choose cremation at the time of death may select a cemetery at a later time. We are available to assist you with the placement of your loved one's cremains at Riverview Cemetery. Four family-related cremains may be placed in a single gravesite (a new grave or a grave belonging to your relative). Call 302-762-4705 to discuss this affordable option.

PROJECTS of NOTE: Generous people are all around us!

Al with Wilbert Cooper Vault Company personally cut grass in preparation for the burial of Veteran Bruce E. Maag on August 1. Al's thoughtfulness and excellent work was "above and beyond the call of duty".

FHRC Volunteer **Chris Weller, from LawnCrafters Landscaping**, in West Chester, cut 2 sections of grass with his riding mower on 8/11 and 8/28.

Neighbor and FHRC Volunteer, **Rich Joyce (Franciscan Lawn & Labor)**, trims grass and weeds from the sidewalk and curb along the very long Washington Street.

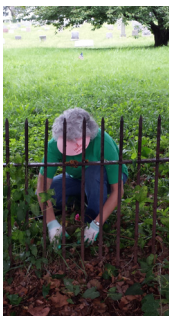
Subira Ibrahim, President of the 1st District Neighborhood Council arranged for the Market Street trees to be weeded, and curbside weeds trimmed.

Kerns Brothers*, a Davey Tree Company came to the rescue under the leadership of Dave Balint and removed a huge branch that had fallen in Section A. There was no monument damage. Next week they will remove a large tree that has fallen into the cemetery (Section M) from an adjacent property. We apologize to the family who came to place flowers on relative graves that were covered by huge branches.



14 FHRC volunteers (ages 13 to 80) spent 3 hours, removing trash and vines, cut grass, trimmed the curb and sign posts, and raked up the debris to beautify outside the cemetery fence along Eastlawn Avenue.

DNREC sent a crew of 4 men to cut/trim "as much as they could in a day".



Veteran count 1058

To view a complete list and Find A Grave page, please visit www.riverviewcem.com

ORAL HISTORY PROJECT

Tell us in writing about your relatives at Riverview Cemetery and we will include the information in a 3-ring binder that will be placed in the Visitor & Information Center. With over 36,000 people at Riverview, there are many more stories to tell.

* Since FHRC assumed ownership in 2009 we have benefitted from the pro-bono Partnership of Kerns Brothers Tree Service now Davey Tree Company. They provide excellent tree care and are a phone call away when trees fall in the cemetery.

Please thank them for their generous donation to Riverview Cemetery when you see them working in your neighborhood and find ways to support their business.



Visit our website: www.riverviewcem.com