

MODERN LIFE

If high-end streamlined design reflects your style, then the Häfele Modern Life collection is undoubtedly what you are looking for. The collection includes designs ranging from stainless steel bar handles to profile handle systems, with finishes to match appliances and accessories throughout the home.





FINN



TRIM

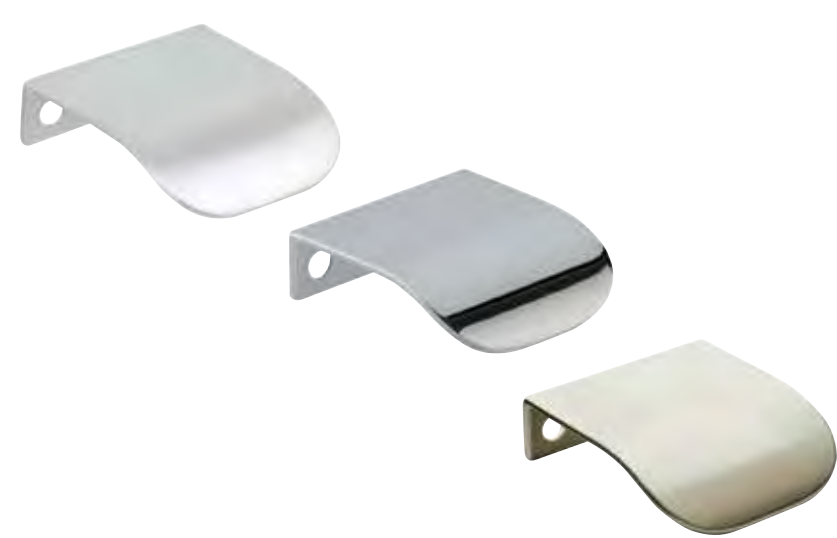
The Finn Trim handle made from aluminum finished in stainless steel.

LENGTH	HOLE CENTRES	CAT. NO.
STAINLESS STEEL EFFECT		
220 mm	192 mm	112.84.014

£ £ £



ELLA



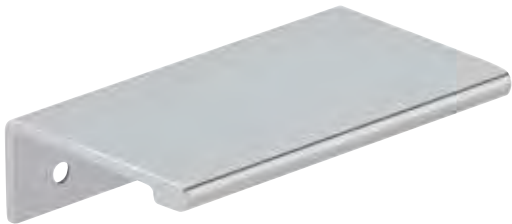
PULL

The Ella pull handle has a sloping edge and is available in three finishes.

LENGTH	HOLE CENTRES	CAT. NO.
POLISHED CHROME		
44 mm	32 mm	124.41.202
MATT CHROME		
44 mm	32 mm	124.41.402
MATT NICKEL		
44 mm	32 mm	124.41.602



QUINN



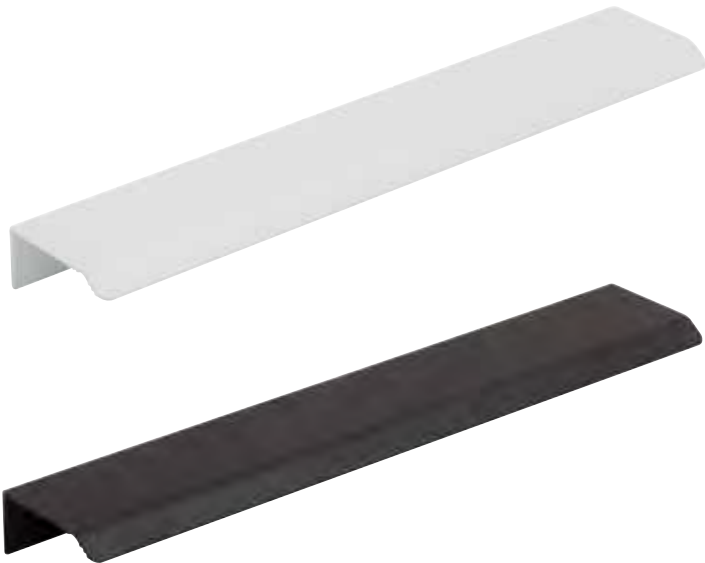
PULL

The Quinn pull handle made from aluminum is available in polished chrome.

LENGTH	HOLE CENTRES	CAT. NO.
POLISHED CHROME		
70 mm	50 mm	124.02.220



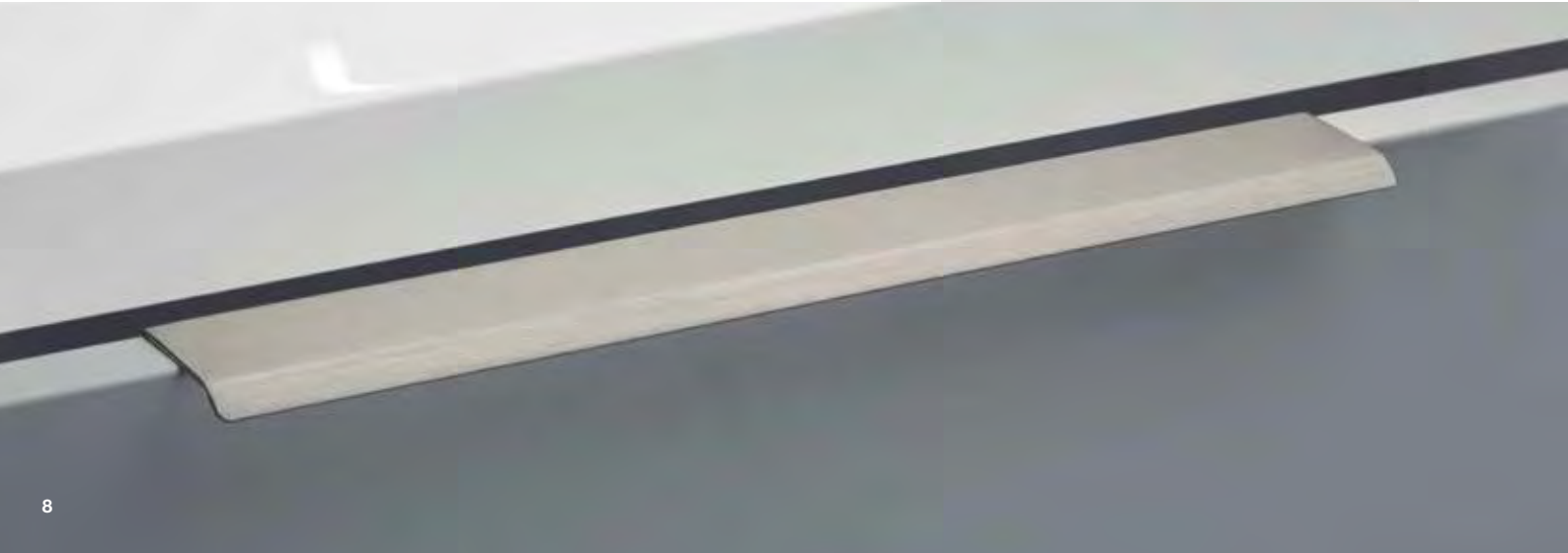
CURVE



PROFILE

The Curve profile handle is sloped with rounded corners, available in three finishes.

LENGTH	HOLE CENTRES	CAT. NO.
STAINLESS STEEL EFFECT		
45 mm	32 mm	126.45.031
100 mm	64 mm	126.45.032
200 mm	128 mm	126.45.035
300 mm	192 mm	126.45.037
400 mm	320 mm	126.45.038
500 mm	416 mm	126.45.039
MATT WHITE		
45 mm	32 mm	126.45.751
200 mm	128 mm	126.45.755
MATT BLACK		
45 mm	32 mm	126.45.351
200 mm	128 mm	126.45.355





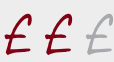
NICK



PULL

The Nick pull handle fits flush to the furniture. It's made from zinc alloy and is available in two brushed finishes.

LENGTH	HOLE CENTRES	CAT. NO.
BRUSHED COPPER		
50 mm	32 mm	126.45.060
178 mm	160 mm	126.45.061
BRUSHED BRASS		
50 mm	32 mm	126.45.062
178 mm	160 mm	126.45.063





RITTA



PROFILE

The Ritta profile handle slopes over the edge of your furniture to give the user a solid grip in their fingertips. Available in three popular finishes.

LENGTH	HOLE CENTRES	CAT. NO.
POLISHED CHROME		
130 mm	64 mm	126.45.050
STAINLESS STEEL EFFECT		
130 mm	64 mm	126.45.051
MATT BLACK		
130 mm	64 mm	126.45.052



ONA



PROFILE

The Ona profile handle has a simple sloping effect fixing to the edge of your furniture. It's pleasant for the user to hold and is available in two finishes.

LENGTH	HOLE CENTRES	CAT. NO.
BRUSHED GREY		
50 mm	32 mm	126.45.110
200 mm	128 mm	126.45.111
350 mm	256 mm	126.45.112
1100 mm	1056 mm	126.45.113
BRUSHED BLACK		
50 mm	32 mm	126.45.120
200 mm	128 mm	126.45.121
350 mm	256 mm	126.45.122
1100 mm	1056 mm	126.45.123



NOMA



PROFILE

The Noma profile handle peeps over the edge of your furniture giving a barely-there appearance to the user. It's interesting shape makes a talking point for any modern kitchen.

LENGTH	HOLE CENTRES	CAT. NO.
STAINLESS STEEL EFFECT		
200 mm	128 mm	126.45.045
350 mm	256 mm	126.45.048
BRIGHT ANODISED		
200 mm	128 mm	126.45.965
350 mm	256 mm	126.45.969
ANTIQUE BRONZE		
200 mm	128 mm	126.45.046
350 mm	256 mm	126.45.049



PORTOBELLO



PROFILE

The Portobello profile handle is a thin rectangular handle in stainless steel.

LENGTH	CAT. NO.
STAINLESS STEEL EFFECT	
148 mm	126.45.010
198 mm	126.45.011
248 mm	126.45.012
298 mm	126.45.013
348 mm	126.45.014
398 mm	126.45.015
448 mm	126.45.016
498 mm	126.45.017
598 mm	126.45.018
698 mm	126.45.019
798 mm	126.45.020
898 mm	126.45.021
998 mm	126.45.022
1198 mm	126.45.023

£££

AVALON



TRIM

The Avalon profile handle features a rectangular trim in stainless steel.

LENGTH	CAT. NO.
STAINLESS STEEL EFFECT	
148 mm	109.48.930
268 mm	109.48.931
298 mm	109.48.932
333 mm	109.48.933
398 mm	109.48.934
448 mm	109.48.935
498 mm	109.48.936
598 mm	109.48.937
798 mm	109.48.938
998 mm	109.48.939

£££

EXCLUSIVE TO
HÄFELE

Fixings
included

GOLA PROFILES AND MATCHING PLINTHS FOR HANDLE FREE APPLICATIONS



Our on-trend range of complementary Gola profiles and plinths offers maximum style and functionality.

There are six different systems in a choice of seven finishes available from Häfele to suit a variety of different applications.

Whether it's a matching finish or contrasting design, the Gola range guarantees an eyecatching kitchen experience.



Silver anodised



Bronze anodised



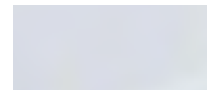
Graphite powder coated



Brushed brass anodised



Brushed copper anodised



Matt white powder coated



Matt black powder coated



For more info visit hafele.co.uk



LINE



PROFILE

The Line profile handle has a simple design, easy to fix from the rear of the cabinet door or drawer in a matt anthracite finish.

LENGTH	HOLE CENTRES	CAT. NO.
MATT ANTHRACITE		
78 mm	64 mm	111.71.510
174 mm	160 mm	111.71.511
334 mm	320 mm	111.71.512





Photo shows Graf 2 handle, pages 30-31

ARCO



The Arco bow handle has a long rounded curve with a smooth finish in stainless steel or polished chrome. Matching knob available.

BOW

LENGTH	HOLE CENTRES	CAT. NO.
STAINLESS STEEL EFFECT		
185 mm	128 mm	111.62.612
281 mm	224 mm	111.62.615
POLISHED CHROME		
185 mm	128 mm	111.62.212
281 mm	224 mm	111.62.215

KNOB

WIDTH	HEIGHT	CAT. NO.
STAINLESS STEEL EFFECT		
20 mm	35 mm	133.91.610

£££

EXCLUSIVE TO



HÄFELE

Fixings included



LIBRA

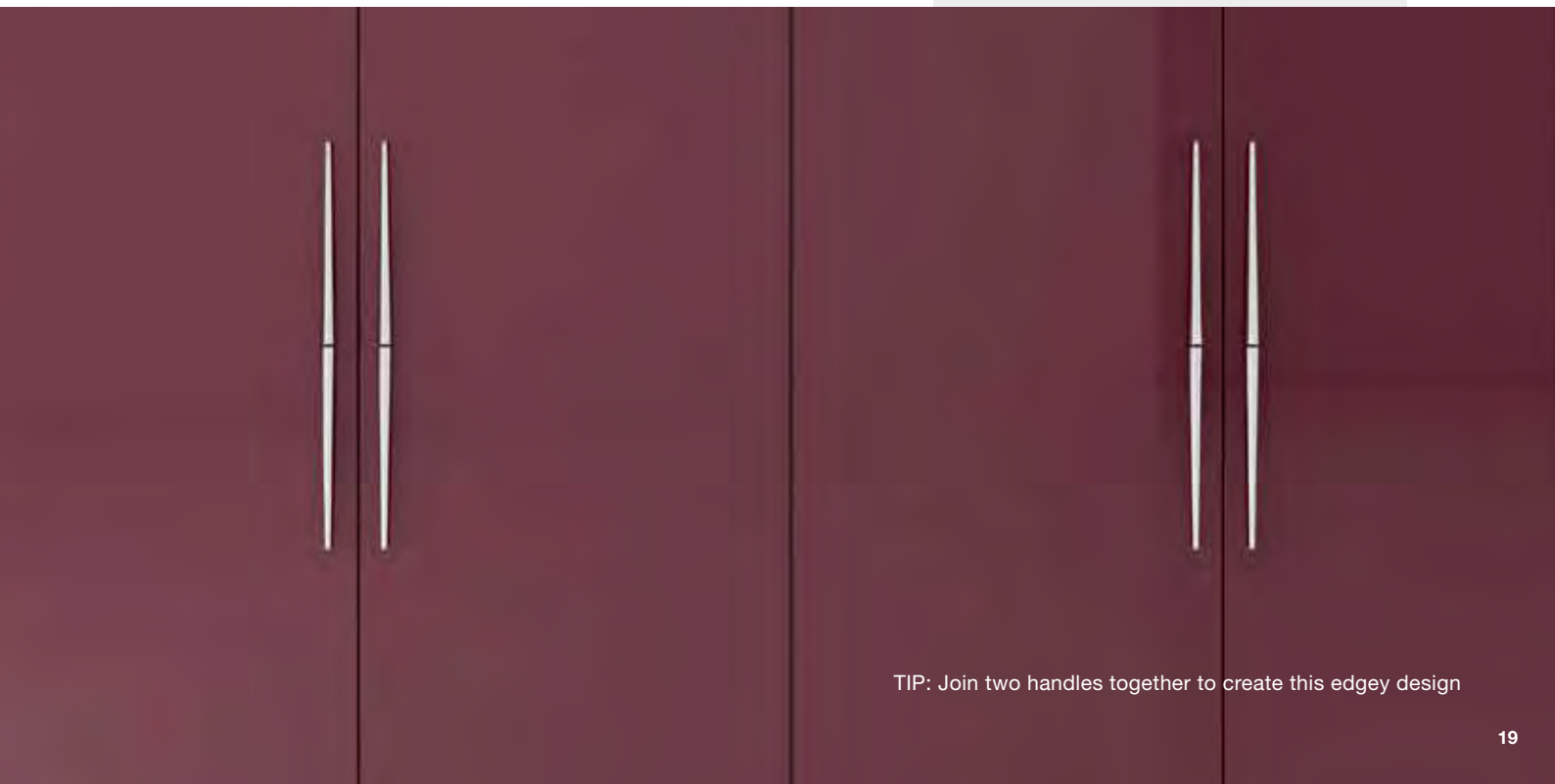


PULL

The Libra pull handle is a long tubular handle which thins at the end giving it a very contemporary look and feel. Available in polished chrome.

LENGTH	HOLE CENTRES	CAT. NO.
POLISHED CHROME		
130 mm	32 mm	107.03.200
210 mm	32/64 mm	107.03.201
280 mm	64/96 mm	107.03.202

£ £ £



TIP: Join two handles together to create this edgy design

OSAKA



PULL

The Osaka pull handle has a bucket shape and can be fitted in either direction to the designer's specification. This pull handle is available in three finishes.

LENGTH	HOLE CENTRES	CAT. NO.
SATIN BRASS		
127 mm	96 mm	110.22.080
191 mm	160 mm	110.22.081
ANTIQUE COPPER		
127 mm	96 mm	110.22.053
191 mm	160 mm	110.22.086
GRAPHITE		
191 mm	160 mm	110.22.586
351 mm	320 mm	110.22.589





Photo shows Osaka handle, page 20

FACTORY



D HANDLE

The Factory D Handle has a very slim flat edge in a textured rusting effect, available in two finishes. Ideal for any industrial style and modern home.

LENGTH	HOLE CENTRES	CAT. NO.
IRON EFFECT MATT		
183 mm	160 mm	116.60.200
247 mm	224 mm	116.60.201
ANTIQUÉ BRASS		
183 mm	160 mm	116.60.220
247 mm	224 mm	116.60.221

£ £ £



TONDA



D HANDLE

The Tonda D Handle is a thin cylindrical design which widens at the points of fixing, available in two sizes in polished nickel.

LENGTH	HOLE CENTRES	CAT. NO.
POLISHED NICKEL		
184 mm	160 mm	110.22.290
344 mm	320 mm	110.22.291

£ £ £



SWING



D HANDLE

The Swing handle differs from other D handles by its inner curve that gives a pleasing solidity to the handle when gripped.

LENGTH	HOLE CENTRES	CAT. NO.
MATT BRASS		
72 mm	64 mm	111.71.500
168 mm	160 mm	111.71.501
328 mm	320 mm	111.71.502

£ £ £





BUTTON



D HANDLE

The design of the Button handle is a reinterpretation of a vintage look, with a simple shape and pure lines. Available in pewter, antique bronze or polished chrome finish.

LENGTH	HOLE CENTRES	CAT. NO.
PEWTER*		
175 mm	160 mm	106.69.691
ANTIQUE BRONZE*		
175 mm	160 mm	106.69.692
POLISHED CHROME		
175 mm	160 mm	106.69.693

£ £ £



RAVIOLO

The design of the Raviolo collection would suit either vintage or industrial styles of kitchen and bathroom with its distinctive curve and arch.

BOW

LENGTH	HOLE CENTRES	CAT. NO.
PEWTER		
172 mm	96 mm	106.69.295
ANTIQUE BRONZE		
172 mm	96 mm	106.69.296

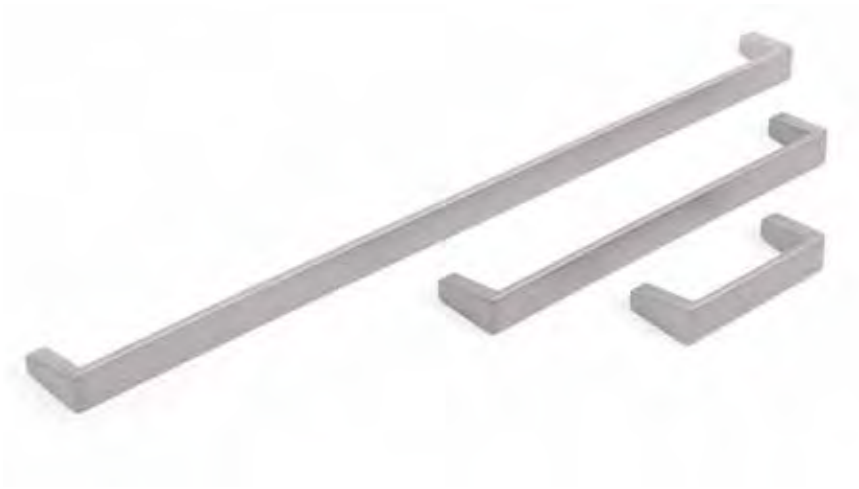
KNOB

DIAMETER	HEIGHT	CAT. NO.
PEWTER		
29 mm	27 mm	106.69.300
ANTIQUE BRONZE		
29 mm	27 mm	106.69.301

£ £ £



LEVEL



PULL

The Level handle is available in a matt anthracite finish, with a simple design to suit most kitchen styles.

LENGTH	HOLE CENTRES	CAT. NO.
MATT ANTHRACITE		
72 mm	64 mm	111.71.505
168 mm	160 mm	111.71.506
328 mm	320 mm	111.71.507





PLANE



PULL

The Plane handle has a distinctive ridge design and is available in two lengths with a matt anthracite finish.

LENGTH	HOLE CENTRES	CAT. NO.
MATT ANTHRACITE		
178 mm	160 mm	111.71.516
338 mm	320 mm	111.71.517

£ £ £





CURLY



D HANDLE

The Curly D handle has soft contoured edges and a very sleek design, available in a matt black finish, ideal for modern kitchens.

LENGTH	HOLE CENTRES	CAT. NO.
MATT BLACK		
79 mm	64 mm	111.71.010
175 mm	160 mm	111.71.011
335 mm	320 mm	111.71.012

£ £ £



PEMBRIDGE



D HANDLE

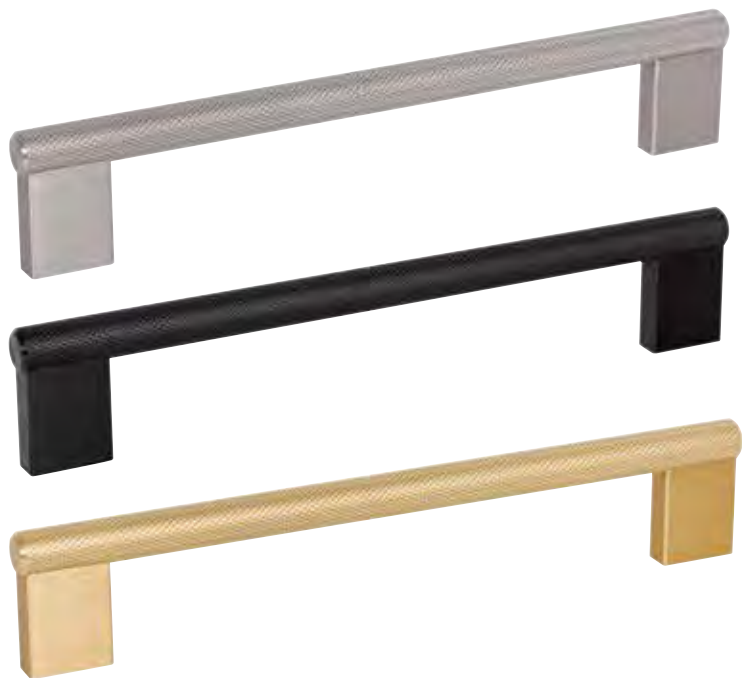
The Pembridge D Handle has a flat face which curves smoothly into the points of attachment.

LENGTH	HOLE CENTRES	CAT. NO.
POLISHED CHROME		
136 mm	128 mm	116.04.225
200 mm	192 mm	116.04.227
328 mm	320 mm	116.04.228
STAINLESS STEEL EFFECT		
136 mm	128 mm	116.04.625
200 mm	192 mm	116.04.627
328 mm	320 mm	116.04.628

£ £ £



GRAF 2



The Graf range of handles and knobs has a mesh surface texture, providing a modern industrial look, as well as a pleasant feel.

BAR

LENGTH	HOLE CENTRES	CAT. NO.
INOX		
182 mm	160 mm	132.19.110
278 mm	256 mm	132.19.111
1200 mm	1178/589 mm	132.19.112
BLACK		
182 mm	160 mm	132.19.115
278 mm	256 mm	132.19.116
1200 mm	1178/589 mm	132.19.117
DARK BRASS		
182 mm	160 mm	132.19.120
278 mm	256 mm	132.19.121
1200 mm	1178/589 mm	132.19.122

£ £ £



GRAF 2



CYLINDRICAL KNOB

DIAMETER	HEIGHT	CAT. NO.
INOX		
10 mm	33 mm	132.19.100
BLACK		
10 mm	33 mm	132.19.101
DARK BRASS		
10 mm	33 mm	132.19.102

£ £ £



GRAF 2



T KNOB

WIDTH	HEIGHT	CAT. NO.
INOX		
60 mm	33 mm	132.19.105
BLACK		
60 mm	33 mm	132.19.106
DARK BRASS		
60 mm	33 mm	132.19.107



GRAF



KNOB

DIAMETER	HEIGHT	CAT. NO.
POLISHED CHROME		
17 mm	28 mm	132.15.230
BLACK		
17 mm	28 mm	132.19.211
DARK BRASS		
17 mm	28 mm	132.19.210



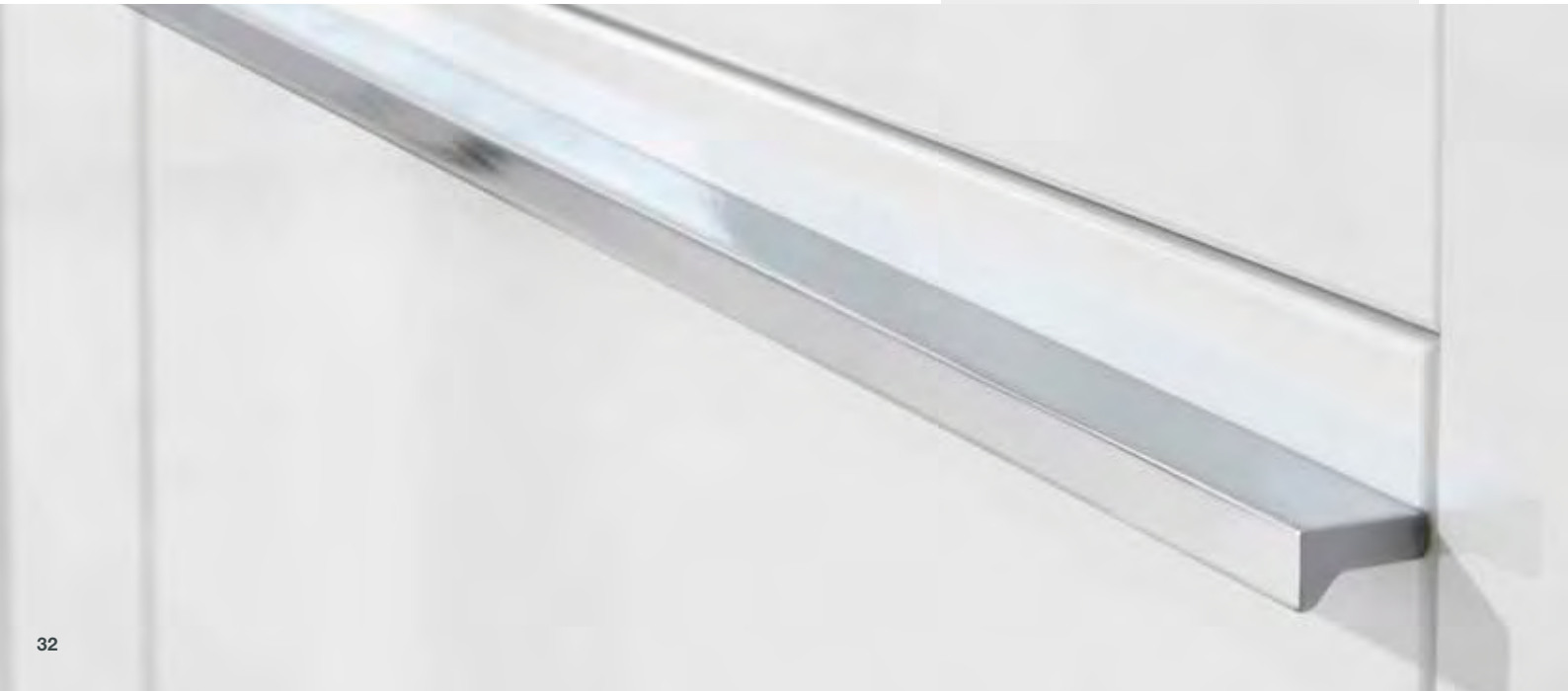
ANGEL



PULL

The Angel is a pull handle with a flush attachment to the furniture. It has a flat rectangular edge with a slight dip for grip and is available in three finishes.

LENGTH	HOLE CENTRES	CAT. NO.
POLISHED CHROME		
200 mm	96/128/160 mm	108.66.230
400 mm	256/320 mm	108.66.231
500 mm	416/320 mm	108.66.232
900 mm	640 mm	108.66.234
MATT BLACK		
200 mm	128/160 mm	108.66.330
STAINLESS STEEL EFFECT		
200 mm	96/128/160 mm	108.66.030



DISCO



PULL

The Disco is a rectangular pull handle with a textured face, available in polished chrome.

LENGTH	HOLE CENTRES	CAT. NO.
POLISHED CHROME		
204 mm	160/192 mm	110.22.243

£££



U



PULL

The U handle, with its straight lines, delicately adapts to different styles of furniture. A design that never goes out of fashion, now available in a brushed copper finish.

LENGTH	HOLE CENTRES	CAT. NO.
MATT BLACK		
136.5 mm	128 mm	108.66.385
328.5 mm	320 mm	108.66.386
500.5 mm	492 mm	108.66.387
POLISHED CHROME		
136.5 mm	128 mm	108.66.285
328.5 mm	320 mm	108.66.286
500.5 mm	492 mm	108.66.287
BRUSHED BRASS		
136.5 mm	128 mm	108.66.388
200.5 mm	192 mm	108.66.389
328.5 mm	320 mm	108.66.390
500.5 mm	492 mm	108.66.391
BRUSHED COPPER		
136.5 mm	128 mm	108.66.376
200.5 mm	192 mm	108.66.377
328.5 mm	320 mm	108.66.378
500.5 mm	492 mm	108.66.379





Photo shows U handle, page 34

COCO



KNOB

The Coco knob is a traditionally shaped round knob in stainless steel.

DIAMETER	HEIGHT	CAT. NO.
STAINLESS STEEL EFFECT		
30 mm	23 mm	134.61.610



ACACIA



KNOB

The Acacia knob is a modern take on the traditional shaped knob in a round shape with a flat edge.

DIAMETER	HEIGHT	CAT. NO.
STAINLESS STEEL EFFECT		
46 mm	30 mm	131.15.000





METROPOLIS



PULL

The Metropolis pull handle is a rectangular shaped handle with curved corners. Finished in satin stainless steel.

LENGTH	HOLE CENTRES	CAT. NO.
GRADE 304 SATIN STAINLESS STEEL		
208 mm	192 mm	115.62.004
336 mm	320 mm	115.62.008
464 mm	448 mm	115.62.011





Photo shows Sea Grass handle, page 39

SEA GRASS



The Sea Grass collection is where sophisticated style meets organic inspiration - the detailed ribbed design beautifully reflects textures found in nature.

CUP

LENGTH	HOLE CENTRES	CAT. NO.
GOLDEN CHAMPAGNE		
98 mm	76 mm	133.50.143
OIL RUBBED BRONZE*		
98 mm	76 mm	133.50.144

PULL

LENGTH	HOLE CENTRES	CAT. NO.
GOLDEN CHAMPAGNE		
191 mm	160 mm	133.50.374
OIL RUBBED BRONZE*		
191 mm	160 mm	133.50.377

KNOB

DIAMETER	HEIGHT	CAT. NO.
GOLDEN CHAMPAGNE		
35 mm	30 mm	133.50.303
OIL RUBBED BRONZE*		
44 mm	35 mm	133.50.306

£££



*Product is subject to variations in finish due to the finishing and manufacturing process of certain materials

KANE



The Kane collection comprises knob, pull and cup handle in an oil rubbed bronze finish to create a classic understated look that never goes out of style.

CUP

LENGTH	HOLE CENTRES	CAT. NO.
OIL RUBBED BRONZE		
111 mm	76 mm	133.50.140

PULL

LENGTH	HOLE CENTRES	CAT. NO.
OIL RUBBED BRONZE		
144 mm	128 mm	133.50.340

KNOB

DIAMETER	HEIGHT	CAT. NO.
OIL RUBBED BRONZE		
30 mm	30 mm	133.50.609



Product is subject to variations in finish due to the finishing and manufacturing process of certain materials

ROCHDALE



The rivets and architectural details of the Rochdale collection will give a utilitarian elegance to the kitchen. Available in a satin nickel finish.

CUP

LENGTH	HOLE CENTRES	CAT. NO.
SATIN NICKEL		
135 mm	96 mm	133.50.142

PULL

LENGTH	HOLE CENTRES	CAT. NO.
SATIN NICKEL		
154 mm	128 mm	133.50.370

KNOB

DIAMETER	HEIGHT	CAT. NO.
SATIN NICKEL		
32 mm	29 mm	133.50.632





OBERON



KNOB

The Oberon knob has a clean simple shape, yet its recessed edges add an elegant intrigue to its design.

DIAMETER	HEIGHT	CAT. NO.
GOLDEN CHAMPAGNE		
35 mm	30 mm	133.50.618
POLISHED NICKEL		
35 mm	30 mm	133.50.622



CARRIONE



The Carrione T knob and pull handles are finished in marble white with polished or oil rubbed bronze mountings, intricately crafted with precise detail.

PULL

LENGTH	HOLE CENTRES	CAT. NO.
MARBLE WHITE/POLISHED NICKEL		
160 mm	96 mm	133.53.035
191 mm	128 mm	133.53.036
MARBLE WHITE/OIL RUBBED BRONZE*		
160 mm	96 mm	133.53.037
191 mm	128 mm	133.53.038

T KNOB

WIDTH	HEIGHT	CAT. NO.
MARBLE WHITE/POLISHED NICKEL		
64 mm	40 mm	133.53.033
MARBLE WHITE/OIL RUBBED BRONZE*		
64 mm	40 mm	133.53.034

£££



*Product is subject to variations in finish due to the finishing and manufacturing process of certain materials

ST. VINCENT



The St. Vincent T knob and pull handle's angular and geometric design create interesting reflections of light when installed.

PULL

LENGTH	HOLE CENTRES	CAT. NO.
POLISHED NICKEL		
191 mm	128 mm	133.50.388
GOLDEN CHAMPAGNE		
191 mm	128 mm	133.50.382

T KNOB

WIDTH	HEIGHT	CAT. NO.
POLISHED NICKEL		
64 mm	37 mm	133.50.641
GOLDEN CHAMPAGNE		
64 mm	37 mm	133.50.639

£££

EXCLUSIVE TO
HÄFELE

Fixings
included
✓



Photo shows St. Vincent handle, page 44