

Powr-Flite®

BETTER QUALITY. BETTER PRICES. GUARANTEED.

Professional Dealer Catalog **First Edition**



Professional Dealer Catalog

WELCOME TO POWR-FLITE

When it comes to floor care know-how, Powr-Flite is second to none. We understand the daily demands placed on you, today's cleaning contractors and in-house facility providers, and making your job easier is what we do best. Getting the job done right, on-time, and in a cost effective manner is critical when it comes to facility cleanliness and safety. Representing Powr-Flite's Professional Product Line, our friendly and knowledgeable dealer network delivers the quality, cost-efficient floor care equipment you need to keep your facility "humming right along". So you can rest easy with Powr-Flite as your business partner. We've got your back with cost-efficient and quality equipment to protect facility assets, increase cleaning productivity, and boost business profits.



BETTER QUALITY.

We know you would not settle for less than the highest quality...and we would not either. Our machines are produced with the same or higher quality components used by other top brands. Powr-Flite products are put through rigorous testing to make sure they meet our quality standards, and our extensive warranty stands as proof of our quality.



BETTER PRICES.

Our global sourcing and efficient operations allow us to offer the best value in the industry, and we back it up with our Low Price Guarantee. If you find a lower advertised price on a comparable machine, we will match it! It is part of our commitment to providing the best possible value in floor care equipment, parts and supplies.



GUARANTEED.

At Powr-Flite, we take pride in what we sell! All of our equipment is carefully engineered and built to exacting quality standards. Because your complete satisfaction is our ultimate goal – we guarantee everything we sell and warranty all Powr-Flite equipment. If you're not satisfied, we're not satisfied!



SUPPORTING AMERICAN INDUSTRY

Powr-Flite proudly manufactures many of our products in the U.S. with globally sourced parts. Most of our equipment is assembled right here in our Fort Worth, Texas facility by skilled employees that take pride in the products they build.



TABLE OF CONTENTS

THE POWR-FLITE PROMISE

1. Competitively priced equipment that gets the job done and maximizes profits without sacrificing quality.
2. Industry-leading, hassle-free, Satisfaction Guarantee on all of our equipment and parts!
3. Outstanding, personalized customer and technical service backed by experienced personnel with hands-on, real-world floor care expertise.
4. Knowledgeable product engineers that work hand-in-hand with facility managers and cleaning contractors to develop innovative, durable floor care equipment that meets the most demanding cleaning tasks.
5. Industry leading delivery and shipping times.
6. Integrated facility products including janitorial equipment, parts and accessories to keep your cleaning equipment up and running each and every day.
7. Many of our products are proudly assembled right here in the U.S.A., with globally sourced parts.

GLOBAL DEALER NETWORK SUPPORTING LOCAL BUSINESS

When it comes to product and technical support, you can rely on Powr-Flite's network of locally-owned Powr-Flite dealerships across the United States and the world. Whether it's Main Street U.S.A. or Saudi Arabia, Powr-Flite dealers are here to provide the support you need to keep your facility clean, safe and profitable.



02 VACUUMS



13 WET/DRY VACUUMS



19 EXTRACTORS



30 FLOOR MACHINES



34 BURNISHERS



37 AUTOMATIC
SCRUBBERS



43 RESTORATION



VACUUMS

THE NEW STANDARD IN BACKPACK VACUUMS!



Designed for Comfort!

Partnering with Deuter – the world leader in hiking and mountain climbing backpacks - Powr-Flite set out to create the most comfortable backpack vacuum possible. Why? Because an easy to use, maneuverable, and comfortable backpack increases productivity. No other backpack vacuum can match our comfort features:

- A superior quality hose with swivel cuff combined with a Heavy-duty lightweight aluminum wand and state of the art tools provides nearly effortless operation right or left handed.
- The standard model is a super quiet 68 dBA and the premium model is an incredibly low 62dBA. These quiet vacuums are easy on the operator and all of those around them.
- The premium model features a patent pending "AC" system that pulls warm air away from the operator keeping them cool and comfortable.
- The premium model also is equipped with a unique "hands free system" to allow the user to store all tools and even the wand and cord on the unit. With both hands free the operator is able to perform other tasks without fighting the hose and tools or removing the vacuum.



The Deuter Patented Aircomfort System

1. Lightweight breathable mesh back panel allows cooling air to get to the users back-keeping the operator up to 25% cooler.
2. Heavily padded waist belt and lumbar support with ergonomic pull forward tightening straps transfer weight to the user's hips – not shoulders.
3. Contoured, padded, and easy to adjust shoulder straps feature an adjustable chest strap and shoulder mounted load stabilizers which allow the user to pull the vacuum close to the body for better control or let it hang away from the body for more ventilation.
4. The Deuter Vari Quick system allows shoulder strap height adjustment in seconds to ensure that users of different heights will have a properly adjusted harness.
5. Deuter's Ergonomically designed lightweight Aircomfort harness provides a great fit for all body types. And because weight is distributed to the natural center of gravity, better balance is achieved no matter how the operator moves.

About Deuter:

Designed to fit! Designed for Comfort!

Deuter is a German company with a 115 year commitment to developing products that have revolutionized the backpack hiking and mountaineering industry over the years. It's no wonder they have grown to become the number one backpack company in the world. Powr-Flite's Comfort Pro backpack combined with Deuter's state-of-the-art harness and lightweight frame results in a unit we're confident you'll agree is the most comfortable backpack vacuum in the market today! Since 1898 Deuter has been dedicated to producing backpacks and harnesses that are renowned for their durability and comfort. Each and every Deuter backpack and harness is perfectly equipped and optimized for comfort and durability. The Deuter Aircomfort System ensures that the harness on the Powr-Flite Comfort Pro backpack series offers multiple unique adjustments - for a secure, cool, and comfortable individualized fit. Deuter products have earned the coveted TUV certification *, with Aspen Times saying "Aircomfort makes Deuter the leader of the pack, with a discernible gain in wearer comfort."

* TUV is an independent inspection organization that certifies the safety of equipment.





INTRODUCING COMFORT PRO!

Powr-Flite is proud to introduce our best-ever backpack vacuums – which we believe will revolutionize how you clean! We guarantee you'll experience an unparalleled level of operator comfort without sacrificing the cleaning performance you need! Because we are passionate about providing you with the best cleaning equipment possible, our engineers have meticulously examined every detail of cleaning performance and comfort. Our new Comfort Pro backpacks deliver improved cleaning performance combined with superior comfort – resulting in improved productivity!

Comfort Pro backpacks come complete with a high quality tool kit, 50' safety-yellow power cord, and two HEPA filter bags. All tools are designed to clip on the waist belt for easy access!

TOOL KIT	17" CREVICE TOOL	5" UPHOLSTERY TOOL	3" DUSTING TOOL	14" HIGH PERFORMANCE CARPET TOOL	14" CARPET TOOL	14" HARD FLOOR TOOL	90° SWIVEL HOSE	WAND
Standard	✓	✓	✓	✓	✓	✓	4' Crush-proof	Double-bend
Hands-Free	✓	✓	✓	✓	✓	✓	2' - 6' Stretch	Aluminum Telescoping 32"-50"



9 Piece Hands-Free Tool Kit



6 qt. model

10 qt. model



Warranty: 3 years -parts, labor, motor. Lifetime - molded body parts

ITEM#	DESCRIPTION	CAPACITY	FILTRATION	WEIGHT (LBS.)	CFM WATERLIFT	POWER	DECIBEL	TOOL KIT	230v MODEL AVAILABLE
BP6S	Standard	6 qt.	4 stage HEPA	8.35 lbs. *	130 / 110"	1100 W / 10.5 Amp	68 dBA	Standard	**
BP10S	Standard	10 qt.	4 stage HEPA	9.35 lbs. *	130 / 110"	1100 W / 10.5 Amp	68 dBA	Standard	**
BP6P	Premium	6 qt.	4 stage HEPA	8.35 lbs. *	130 / 110"	1100 W / 10.5 Amp	62 dBA	Hands-Free	**
BP10P	Premium	10 qt.	4 stage HEPA	9.35 lbs. *	130 / 110"	1100 W / 10.5 Amp	62 dBA	Hands-Free	**

* Weight of Backpack. Harness weight is an additional 3.2 lbs. – ** 230v available 3rd quarter of 2013

Engineered For Cleaning Power, Productivity and Dependability!

- More filter bag options. Now choose closed-mouth HEPA or standard bags – open-mouth or closed-mouth design.
- Both Comfort Pro models have 8 waist belt clips - making it easy to always have the right tool in easy reach.
- Premium model includes our new aluminum telescoping wand which comes with a ring clip - allowing it to be stored on the waist belt.
- Hip mounted power switch is within easy reach of the operator. Harness includes power cord hook for easy transport.
- Has extended 3 year warranty on parts, labor and motor, with lifetime warranty on molded body parts.



Four Levels of Filtration

1. HEPA bag captures 99.97% of all pollutants – as small as .3 microns in size.
2. Micro Cloth filter is a washable, reusable filter with breathable membrane.
3. Pre-Motor filter protects the motor from harmful debris.
4. Exhaust filter is an easy-access washable, reusable post-motor filter.

SHIPPING APRIL 2013!

VACUUMS



PRO-LITE 8 LB. VACUUM

**Only
8 lbs!**

The Powr-Flite Pro-Lite vacuum is quickly becoming the most popular vacuum we have ever made. People love using this vacuum! At only 8 lbs, it's easy to move around and glides effortlessly across the carpet. The powerful brush action literally pulls the vacuum across the floor. There has never been an easier vacuum to use.

Don't let the light weight fool you. This machine is a power house. It out cleans the other lightweight vacuums by as much as 50%. Most lightweight vacuums rely primarily on brush action to clean – the Pro-Lite uses both high speed sweeping and high 160 CFM of suction. A more powerful motor combined with twin fans and aggressive agitation make this one of the best cleaning commercial upright vacuums on the market, at any weight and any price!

A combination of space age polymers and aluminum allow us to produce a very lightweight vacuum that is incredibly durable. You do not have to sacrifice strength and durability to get light weight.

- Dual fan technology provides greater airflow for superior cleaning performance and edge cleaning on both sides
- Top fill Enviro-Clean™ high filtration bags hold more debris than other lightweight vacs, increasing operator productivity and improved indoor air quality
- A truly unique design allows this vacuum to adjust properly to any carpet height without the need for the operator to make any adjustment
- A special squeegee attached to the base plate allows you to move from carpet to hard floors with ease
- Comes complete with a 50' cord to maximize reach for larger cleaning areas



Low profile lies completely flat to reach under beds and furniture



Enviro-CLEAN

Warranty: 2 years hood, 1 year motor, parts and labor								
ITEM#	MOTOR	FILTER BAG	VOLTAGE / POWER CORD	CFM	CLEANING WIDTH	WEIGHT (LBS.)	APPROVALS	230v MODEL AVAILABLE
PF62EC	7.0 amp	Enviro-Clean paper bag	120V / 60 Hz 50' - 18/3	160	12.75"	8	UL/CSA	No
259PB	Enviro-Clean™ paper bag, 6 pak							
L60A	belt							



LIGHTWEIGHT FLEET VACUUM

The economically priced PF50 is the fleet vacuum of choice! You won't find a fully equipped commercial vacuum with this many features, at this price, anywhere but Powr-Flite! Priced so you can buy in quantity; put one of these vacuums on each floor in your building or on every cleaning cart for commercial cleaning power at an astonishing price.

The 12" PF50 is lightweight at only 12 pounds, but is built commercial tough with a heavy-duty housing and all steel 2-piece handle. These long-lasting components provide years of worry free service. The PF50 combines the cleaning power of a 65 CFM 5.0 amp motor with the filtering efficiency of **Enviro-Clean™** paper bags for performance and clean air at a price every facility can afford.

- Uses the Enviro-Clean™ paper bag for improved filtration that captures germs, bacteria and other pollutants as small as 0.1 micron in size
- Built commercial tough with a heavy-duty housing and all steel 2-piece handle
- Low maintenance with easy to change belt drive and heavy-duty replaceable 12" brush roll with removeable end caps for easy repair
- The 4-position height adjustment provides effective cleaning on multiple flooring types
- Accepts Sanitaire® replacement parts
- Convenient 30' cord for office or hotel room cleaning



Convert your PF50 to a cloth shake out bag model with this kit! Kit includes a heavy-duty commercial grade corduroy cloth bag with an all metal commercial bag adapter complete with gasket. Item# G890

Enviro-CLEAN

Warranty: 1 year motor, parts and labor

ITEM#	MOTOR	FILTER BAG	VOLTAGE / POWER CORD	CFM	CLEANING WIDTH	WEIGHT (LBS.)	APPROVALS	230v MODEL AVAILABLE
PF50	5 amp	paper bag	120V / 60 Hz 30' - 18/3	120	12"	12	UL/CSA	No
G890	commercial bag conversion kit							
266PB	Enviro-Clean™ paper bags, 9 pak							
F631	"long life" belt							

VACUUMS



12" UPRIGHT COMMERCIAL VACUUMS

When you have a lot of carpet to clean, the high performance PF70 series vacuums are the vacuums of choice for contractors, hotels and building maintenance professionals.

The workhorse of the Powr-Flite vacuum line, the PF70 models provide the high performance cleaning that makes commercial cleaners jobs easier. Suction power of 75 CFM works with the Vibra-Groomer II agitator, which produces increased agitation to pull deep embedded dirt from carpets. Whether the task calls for the 12" PF70 series or the 16" PF757 series, we have the model for the job!



ITEM#
PF70DC

vacucide
Enviro-CLEAN



Dirt cup makes emptying vacuum easy

- Durable and long lasting with 2-piece steel handle, heavy-duty metal brush roll, and rugged low profile housing
- 6 level height adjustment provides superior cleaning on any type of carpet
- Easy maintenance with the heavy-duty metal brush roll with replaceable brush strips and ball bearings
- Headlight for low light areas - not available on dirt cup models
- Long 50' cord for more efficient cleaning
- Choose from Vacucide™ shake-out bag, Enviro-Clean™ high filtration paper bag or dirt cup models
- Accepts Sanitaire® replacement parts



ITEM#
PF70EC

Warranty: 1 year motor, parts and labor

ITEM#	FILTER BAG	MOTOR	BRUSH ROLL	VOLTAGE / POWER CORD	CFM	CLEANING WIDTH	WEIGHT (LBS.)	APPROVALS	230v MODEL AVAILABLE
PF70EC	12" paper bag	7 amp	Vibra-Groomer II	120V / 60 Hz 50' - 18/3	145	12"	14	UL/CSA	No
PF70VC	12" cloth bag								No
PF70DC	12" dirt cup								No
266PB	Enviro-Clean™ paper bags, 9 pak								
F631	"long life" belt								
ER322	Sylvania light bulb								



16" UPRIGHT COMMERCIAL VACUUMS

Superior cleaning performance combined with 33% higher productivity over 12" models make the PF757 series the top vacuum for larger areas.

The 16" cleaning path makes quick work of larger, open spaces with the Vibra-Groomer II agitation that cleans deep down into carpets for removing ground in dirt. And with true edge cleaning, you don't have to worry about those difficult periphery areas. Built to be durable in any commercial setting, these vacuums are built on the most popular and successful commercial vacuum platform of all time. These classic designed vacuums offer great performance, durability and common interchangeable parts, supplies and accessories. Whether the task calls for the 12" PF70 series or the 16" PF757 series, we have the model for the job!



- Heavy-duty components for rugged commercial use
- From hard floors to commercial and residential carpets, the multi-level height adjustments provides the perfect height for cleaning any type of carpet
- True edge cleaning with central belt design
- Clear, quick release fan chambers for easy maintenance to belt, brush roll, fan and fan chamber with no tools required
- Wide beam headlight for easy vacuuming in low light areas
- Fast and efficient 50' commercial cord
- Choose from Vacucide™ shake-out bag, Enviro-Clean™ or high filtration paper bag
- Accepts Sanitaire® replacement parts



Clear quick release fan chamber makes service and clean-up easy – no tools are necessary to access the belt, brush roll, fan and fan chamber



Warranty: 1 year motor, parts and labor										
ITEM#	FILTER BAG	MOTOR	BRUSH ROLL	VOLTAGE / POWER CORD	CFM	CLEANING WIDTH	WEIGHT (LBS.)	APPROVALS	230v MODEL AVAILABLE	
PF757CEC	16" paper bag	7 amp	Vibra-Groomer II	120V / 60 Hz 50" - 18/3	145	16"	18	UL/CSA	No	
PF757CVC	16" cloth bag								No	
266PB	Enviro-Clean™ paper bags, 9 pak									
F631	"long life" belt									
ER322	Sylvania light bulb									



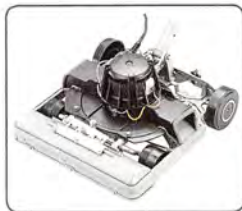
VACUUMS

IRONSIDE ALL METAL UPRIGHT VACUUMS

Incredible suction power with the durability of a tank! Constructed of an all metal housing, aluminum chassis and heavy-duty steel hood assembly, the Ironside is the most durable vacuum ever made. The all metal construction stands up to the most rigorous demands of the cleaning industry. No other vacuum provides this combination of durability and superior suction power.

The Ironside picks up things that get left behind by other vacuums; staples, paper clips, string, dog hair...all of those little things you typically have to bend over and manually pick up.

- Aluminum chassis is lightweight and very durable with an extended warranty of 5 years
- Extra tough metal fan withstands wear and tear from objects like paper clips and coins, and produces impressive air flow for superior cleaning
- Handle and cord hooks are chrome steel - Guaranteed Not to Break!
- All metal fan with extended 2 year warranty
- Variable height adjustment goes from commercial grade carpet to extra thick plush for the perfect setting for any type of floor
- Vacuum turns on automatically when handle is lowered
- Central belt design with extra large edge cleaning channels provides great cleaning from edge to edge
- Choose between 12 and 16 inch models with shake-out bag, high filtration Enviro-Clean™ paper bag or dirt cup



Virtually unbreakable all metal chassis for extended life



Clear quick release fan chamber makes service and clean-up easy



ITEM# PF1887VC

ITEM# PF1886DC



Warranty: 5 years chassis, 1 year motor, parts and labor										
ITEM#	FILTER BAG	MOTOR	BRUSH ROLL	VOLTAGE / POWER CORD	CFM	CLEANING WIDTH	WEIGHT (LBS.)	APPROVALS	230v MODEL AVAILABLE	
PF1886EC	12" Enviro-Clean™ paper bag	8 amp	double helical	120V / 60 Hz 50' - 18/3	145	12"	15	UL/CSA	No	
PF1886VC	12" Vacuicide™ cloth bag								No	
PF1886DC	12" dirt cup								No	
PF1887EC	16" Enviro-Clean™ paper bag					16"	19		No	
PF1887VC	16" Vacuicide™ cloth bag								No	
PF1887DC	16" dirt cup								No	
266PB	Enviro-Clean™ paper bags, 9 pak									
F631	"long life" belt									



15" HEPA UPRIGHT WITH TOOLS

The PF82HF clean-air carpet vacuum, with sealed HEPA filtration system can dramatically reduce pollutants that contribute to what is known as "sick building syndrome"! The HEPA filter captures dust and allergen particles down to .3 microns in size – particles are trapped in the filter so they are permanently removed from the environment.

HEPA vacuums are also an important element in keeping air ducts free of dust and debris. Because the vacuum reduces the amount of particles in the air, the air ducts become contaminated much less often.

- Increase productivity with the wide 15" cleaning path - cleans over 20% faster than a 12" vacuum
- Low 69 dB rating meets LEED requirements
- Washable, sealed HEPA filters for improved indoor air quality
- Convenient tools-on-board allows the operator to easily switch between carpet and detail vacuuming tasks
- Oversized diameter hose resists clogging and stretches to 10' to reach all above-floor jobs
- Bag safety latch prevents vacuum from operating without a bag in place
- Your investment is protected by thermal overload protection that switches vacuum off to prevent overheating
- Headlight makes it easy to use in low light areas
- Accepts Sanitaire® replacement parts



Hose stretches to 10' to reach all above floor jobs



Crevice, dust brush and 10' stretch hose included for detail cleaning

Warranty: 1 year motor, parts and labor

ITEM#	FILTRATION	FILTER BAG	MOTOR	VOLTAGE / POWER CORD	CFM	CLEANING WIDTH	WEIGHT (LBS.)	APPROVALS	230v MODEL AVAILABLE
PF82HF	HEPA	paper bag LS	7 amp	120V / 60 Hz 40' - 18/3	135	15"	18	UL	No
ER419	paper bags, 3 pak								
09.024	belt, 2 pak								
ER285	HEPA filter - washable								
ER280	pre-motor filter								

VACUUMS



DUAL MOTOR UPRIGHT WITH TOOLS



Get the best results with dedicated power to both the vac motor and the brush roll! The dual motors maximize cleaning efficiency and increase productivity. These vacuums have an enclosed bag filtration system that does not allow dust to escape. The optional HEPA filter improves Indoor Air Quality (IAQ).

- Dual motor design for dedicated power to the vacuum and brush motors for the ultimate in cleaning performance
- Quiet 69 dB noise level improves operator comfort and allows cleaning during operating hours - meets LEED requirements
- Convenient tools-on-board for all cleaning jobs with crevice tool and dust brush
- Long life belt is sealed from the dirt path so it lasts much longer
- Thermal overload protection shuts the vacuum off to prevent overheating
- Bag safety latch prevents vacuum from operating without a bag in place
- Electronic indicator lights for full bag, bristle contact, belt breakage, brush roll blockage, cord connection and airway blockage
- See through hose makes it easy to identify any clogs
- Protect hard floors from aggressive brush action – the brush roll turns off when the on-board wand is removed or handle is raised
- Convert to a shake-out bag with optional cloth bag

HEPA
FILTRATION

Optional



Adjustable brush height



Lies completely flat to fit under the lowest furniture



Telescopic wand with ergonomic handle and 10' stretch hose

Enviro-CLEAN

Warranty: 5 years chassis, 1 year motor, parts and labor

ITEM#	DESCRIPTION	FILTER BAG	MOTOR	BRUSH ROLL	VOLTAGE / POWER CORD	CFM	CLEANING WIDTH	WEIGHT (LBS.)	APPROVALS	230v MODEL AVAILABLE
PF14	dual motor/ with on-board tools	Enviro-Clean™ paper bag	6.1 amp	replaceable strips	120V / 60 Hz 50' - 18/3	90	14"	22	UL/CSA	No
PF18							18"	24		No
261CFR	Enviro-Clean™ paper bags, 10 pak									
TB97	belt									
HP1418	HEPA filter kit									
TB143	cloth shake-out bag									



12" UPRIGHT SINGLE MOTOR COMMERCIAL VACUUM



Quality, dependability, price...an outstanding value in a durable commercial upright! The easy to use Powr-Flite PF90 is built commercial tough with an all metal handle, base plate and brush roll in a heavy-duty housing. The performance of the powerful double ball-bearing motor provides the suction power needed for commercial cleaning without the expense of two motors.

The self-adjusting height goes from plush carpeting to commercial grade and even hard floors with ease. The PF90 will also lay completely flat to reach under furniture and other obstructions. Optional tools are also available to add the convenience of performing every type of vacuuming job!

- Heavy-duty metal components for rugged commercial use
- Self-adjusting height provides superior cleaning for any type of carpet
- Soft furniture guard protects furniture and baseboards
- Thermal overload protection that switches the vacuum off to prevent overheating
- Lays completely flat- excellent for getting under the lowest furniture
- Uses the Smart Choice BioClear vacuum bags that capture particles up to 0.1 micron & provide 6 times the filtration than ordinary bags



Low profile lies completely flat to reach under beds and furniture

Warranty: 1 year motor, parts and labor

ITEM#	FILTER BAG	MOTOR	BRUSH ROLL	VOLTAGE / POWER CORD	CFM	CLEANING WIDTH	WEIGHT (LBS.)	APPROVALS	230v MODEL AVAILABLE
PF90	12" BioClear Paper Bag	10 amp	Metal w/replaceable brush strips	120V / 60 Hz 40' - 18/3	80	12"	17	UL	No
06.153	Smart Choice BioClear paper bags, 3 pak								
09.104	belt								



LARGE AREA SWEEPERS

32" Manual Sweeper

Easy to push and maneuver at only 30 lbs., the PS320 manual sweeper is an efficient option for removing dirt, dust and debris from large areas and is ideal for maintaining parking lots, garages, patios, warehouses or any other hard floor area. The 4 brush system utilizes two side brooms to sweep dust and debris toward the two main brooms that lift the debris into the 1.6 cubic foot hopper. The hopper's convenient carrying handle allows for effortless emptying in any trash or waste bin.

- 32" cleaning path sweeps over 17,000 square feet per hour for higher productivity
- Adjustable side brooms and main brooms allow for operation in various conditions
- Dual side brooms provide excellent edge cleaning
- Rugged all-plastic housing resists corrosion and is easily cleaned
- Handle folds for convenient upright storage



Warranty: 1 year parts and labor

ITEM#	POWER SUPPLY	DRIVE SYSTEM	RUNTIME	HOPPER CAPACITY	MANUAL SPEED	WORK RATING	WEIGHT (LBS.)	230v MODEL AVAILABLE
PS320	manual	belt	N/A	1.6 cu. ft.	N/A	17,600 (ft ² /hr)	30	N/A
PS320A	side brush belt							
PS320B	drive belt							



ITEM# PF2004

24"-28" Wide Area Sweeper Vacuums

Powr-Flite's wide area sweeper vacuums are designed specifically for large area carpet maintenance. They are perfect for auditoriums, stadiums, churches, schools, theaters and convention centers. Not only does the large 24" or 28" cleaning path get the job done faster, these sweepers will pick up debris that would clog conventional vacuums. The large 7" fan and 3" brush roll picks up large objects with ease.



- Large recovery bag holds equivalent of 6.4 dry gallons to reduce frequent emptying and improve productivity
- 5 position foot operated height adjustment provides the perfect cleaning height for most surfaces
- Extra long 60' cord allows you to maximize your working area and reduces down time
- Steel handle folds down for convenient storage

Warranty: 1 year motor, parts and labor

ITEM#	FILTER BAG	VAC MOTOR	BRUSH ROLL	VOLTAGE / POWER CORD	CFM	CLEANING WIDTH	WEIGHT (LBS.)	APPROVALS	230v MODEL AVAILABLE
PF2004	cloth outer bag	1.6 hp	3" dia. quadra	120V / 60 Hz	220	24"	74	UL/CSA	No
PF2008	paper bag insert	10 amp	sweep bristles	60' - 16/3		28"			No
WA65	paper filter bags, 5 pak								
WA5	belt								



5 GALLON WET/DRY VACUUM

Compact for the smaller tasks, with the power to perform any floor maintenance job, the PF51 is commercial tough. It picks up water, mud, sludge, nails, screws, food...anything you would find in the toughest conditions. The 5 gallon size is ideal to keep in your truck or janitor closet – compact size goes anywhere!

- 1.6 hp, 1200 watt heavy-duty commercial vacuum motor with 114 CFM and 100" waterlift for the toughest jobs
- Washable cloth filter keeps dust from circulating back into the air
- Swivel hose connector allows 360° hose rotation, letting you move the vacuum without fear of disconnection
- Comes complete with tools: 7 ft. hose, 39" 2-piece wand, 11" floor tool, a 14" squeegee tool, a crevice tool and a dust brush



Pistol grip on hose provides maximum control and ease of use with tools

Warranty: 4 year tank, 1 year motor and parts

ITEM#	TANK SIZE	TANK MATERIAL	VACUUM MOTOR	CFM / WATERLIFT	VOLTAGE / POWER CORD	DRAIN SYSTEM	HOSE	WEIGHT (LBS.)	230v MODEL AVAILABLE
PF51	5 gal.	polyethylene	1.6 hp, 1200 watt	114 / 100"	120V / 60Hz 15' - 16/3	tip-pour	1-1/4" x 7'	23	Yes
WD102	cloth filter bag, washable								



WET/DRY VACUUMS

15 GALLON WET/DRY VACUUMS

Powr-Flite's 15 gallon wet/dry vacuums provide the rugged durability necessary for tough commercial jobs. Available with a heavy-duty stainless steel or polyethylene tank these vacs outperform and outlast wet/dry vacs sold through retail channels. Both models offer easy maneuverability and stability. The versatility of these machines make them contractors number one choice for strip jobs, water recovery, dust pick up and general maintenance needs.

- 1.6 hp, 1200 watt motor with 114 CFM and 100" waterlift provides the high performance for both dry and wet recovery
- 2-stage filtration with a washable cloth filter bag that keeps dust from circulating back into the air and a super performance pleated, washable synthetic cartridge filter for higher filtration of fine dust
- Waste disposal and cleanup is easy with a drain on the polyethylene model and simple tip and pour on the stainless steel model
- Sound insulated vacuum head lowers decibel level for safety (77db at 8 ft.)
- Fewer clogs with the large 1-1/2" vacuum hose
- Swivel hose connector allows 360° hose rotation, letting you move the vacuum without fear of disconnection
- Comes complete with 10' swivel hose, 2-piece wand, crevice and dusting tools, and 14" floor/rug and squeegee tools



Item# PF53



Item# PF54

Shown with optional front mount squeegee (Item# FM100H)



Simple tip and pour for easy waste removal (on stainless steel models only)



Optional front mount squeegee system picks up water faster than a hose and wand and it's especially effective in tight spots...maneuvering right up to wall and into corners, picking up in forward and reverse.

Warranty: 5 year tank, 1 year motor and parts

ITEM#	TANK SIZE	TANK MATERIAL	VACUUM MOTOR	CFM / WATERLIFT	VOLTAGE / POWER CORD	DRAIN SYSTEM	HOSE	WEIGHT (LBS.)	230v MODEL AVAILABLE
PF53 w/tool kit	15 gal.	stainless steel	1.6 hp, 1200 watt	114 / 100"	120V / 60Hz 30' - 16/3	pour	1.5" x 10'	61	Yes
PF54 w/tool kit		polyethylene				drain hose			Yes
FM100	front mount squeegee, fits PF53								
FM100H	front mount squeegee, fits PF54								
WD3	cloth filter assembly, washable								
WD36	pleated synthetic filter cartridge, washable								



20 GALLON WET/DRY VACUUMS



Item# PF55

Powr-Flite's 20 gallon wet/dry vacs are the perfect choice for large volume recovery. The heavy-duty stainless steel or the polyethylene tanks are built to last with the durability for the toughest commercial jobs. These wet/dry vacs have the capacity and power for large water recovery jobs or dry debris pick-up in the shop or on the job site. They are perfect for hard floor maintenance jobs, recovering strippers and hard floor cleaners easily.

- 1.6 hp, 1200 watt motor with 114 CFM and 100" waterlift provides the high performance for both dry and wet recovery
- 2-stage filtration with a washable cloth filter bag that keeps dust from circulating back into the air and a super performance pleated, washable synthetic cartridge filter for higher filtration of fine dust
- Waste disposal and cleanup is easy with a drain on the polyethylene model and simple tip and pour on the stainless steel model
- Sound insulated vacuum head lowers decibel level for safety (77db at 8 ft.)
- Fewer clogs with the large 1-1/2" vacuum hose
- Swivel hose connector allows 360° hose rotation, letting you move the vacuum without fear of disconnection
- Comes complete with 10' swivel hose, 2-piece wand, crevice and dusting tools, and 14" floor/rug and squeegee tools



Item# PF56

2-STAGE FILTRATION



pleated filter



cloth filter

Warranty: 5 years tank, 1 year motor and parts

ITEM#	TANK SIZE	TANK MATERIAL	VACUUM MOTOR	CFM / WATERLIFT	VOLTAGE / POWER CORD	DRAIN SYSTEM	HOSE	WEIGHT (LBS.)	230v MODEL AVAILABL
PF55	20 gal.	stainless steel	1.6 hp, 1200 watt	114 / 100"	120V / 60Hz 30' - 16/3	tip pour	1.5" x 10'	72	Yes
PF56		polyethylene				drain hose		60	Yes
FM200	front mount squeegee, fits PF55								
FM200H	front mount squeegee, fits PF56								
155PB	paper bag (single), fits PF55, PF56								
WD4	cloth filter assembly, washable								
WD36	pleated synthetic filter cartridge, washable								



WET/DRY VACUUMS

20 GALLON DUAL MOTOR WET/DRY VACUUMS

Designed for heavy duty industrial cleaning and material handling, Powr-Flite's dual motor wet/dry vacs boost the power to 192 CFM with 100" waterlift for the heavy-duty jobs. The heavy-duty, 18 gauge stainless steel or the polyethylene tanks are built to last with the durability for the toughest commercial jobs. With dual-motors for increased suction; the power and versatility make these wet/dry vacs an ideal choice for a wide range of general shop cleanup tasks, from liquid recovery to picking up metal shavings.

- 2-stage filtration with a washable cloth filter bag that keeps dust from circulating back into the air and a super performance pleated, washable synthetic cartridge filter for higher filtration of fine dust
- Waste disposal and cleanup is easy with a drain on the polyethylene model and simple tip and pour on the stainless steel model
- Sound insulated vacuum head lowers decibel level for safety (77db at 8 ft.)
- Fewer clogs with the large 1-1/2" vacuum hose
- Swivel hose connector allows 360° hose rotation, letting you move the vacuum without fear of disconnection
- Comes complete with 10' swivel hose, 2-piece wand, crevice and dusting tools, and 14" floor/rug and squeegee tools



Item# PF57



Item# PF58



Optional front mount squeegee system picks up water faster than a hose and wand and it's especially effective in tight spots...maneuvering right up to wall and into corners, picking up in forward and reverse.

Warranty: 5 years tank, 1 year motor and parts

ITEM#	TANK SIZE	TANK MATERIAL	VACUUM MOTOR	CFM / WATERLIFT	VOLTAGE / POWER CORD	DRAIN SYSTEM	HOSE	WEIGHT (LBS.)	230v MODEL AVAILABLE
PF57	20 gal.	stainless steel	2	192 / 100"	120V / 60Hz	tip-pour	1.5" x 10'	78	Yes
PF58	20 gal.	polyethylene	1.6 hp, 1200 watt	192 / 100"	30' - 16/3	drain hose	1.5" x 10'	62	Yes
FM200	front mount squeegee, fits PF57								
FM200H	front mount squeegee, fits PF58								
155PB	paper bag (single), fits PF57, PF58								
WD4	cloth filter assembly, washable								
WD36	pleated synthetic filter cartridge, washable								



20 GALLON HEPA WET/DRY VACUUM



Shown with optional wet adapter (Item# PFHMW)

Powr-Flite's HEPA wet/dry vac is perfect for wet or dry debris recovery applications where critical filtration is required. The PF55HM features 3-stage filtration, utilizing a 2-ply totally enclosed paper bag, a double layer glass pre-filter, and an individually certified HEPA filter that is 99.97% efficient in filtering particles down to .3 microns, ensuring that the exhaust air is clean and free of hazardous airborne pollutants.

- 1.6 hp, 1200 watt motor with 114 CFM and 100" waterlift provides the high performance for both dry and wet recovery
- Sound insulated vacuum head lowers decibel level for safety (77 dB at 8 ft.)
- Optional wet adapter must be added for wet recovery
- 18 gauge heavy-duty stainless steel tank is corrosion resistant and features a tip and pour design for easy debris disposal
- Swivel hose connector allows 360° hose rotation, letting you move the vacuum without fear of disconnection
- Comes complete with 10' swivel hose, 2-piece wand, crevice and dusting tools, and 14" floor/rug and squeegee tools



Certified HEPA filtration



Optional wet recovery adapter



Tool kit included

Warranty: 1 year motor and parts

ITEM#	TANK SIZE	TANK MATERIAL	VACUUM MOTOR	CFM / WATERLIFT	VOLTAGE / POWER CORD	DRAIN SYSTEM	HOSE	WEIGHT (LBS.)	230v MODEL AVAILABLE
PF55HM	20 gal.	stainless steel	1.6 hp, 1200 watt	114 / 100"	120V / 60Hz 30' - 16/3	tip-pour	1.5" x 10'	75	Yes
PFHMW	wet recovery adapter								
X9251	certified HEPA replacement filter - PF55HM								
H829	HEPA pre-filter, 2 pak								
PF55-KIT	paper bag adapter kit								
PB55HM	paper bag, 6 pak								



WET/DRY VACUUMS

20 GALLON HEAVY-DUTY WET/DRY VACUUMS

Rated for constant industrial pick up, these heavy-duty wet/dry vacuums feature double sealed motor bearings with extra shielding to keep moisture and dirt out of the bearings...the main cause of motor failure. For longer lasting motors the 2.5 peak hp motor with a high volume blower port, allows clean dry air to cool the motor and moist or dirty air to bypass it.

- Heavy-duty 20 gauge stainless steel or epoxy painted steel tanks stand up to the demands of tough constant industrial wet and dry recovery
- HEPA model (PF27HM), for dry pickup, is EPA approved for lead paint removal
- External power plug for accessories such as Powr-Flite's commercial power nozzle (PEB)
- Swivel hose connector allows 360° hose rotation, letting you move the vacuum without fear of disconnection
- External drain for easy waste disposal and cleanup
- Convenient hose storage and tool caddy included
- Comes complete with 10' swivel hose, 2-piece all metal wand and floor/rug and squeegee tools



Item# PF27HM

HEPA
FILTRATION



Item# PF25



On-board hose storage and tool caddy



Easy filter change and motor access

Warranty: 1 year motor and parts

ITEM#	TANK SIZE	TANK MATERIAL	VACUUM MOTOR	CFM / WATERLIFT	VOLTAGE / POWER CORD	DRAIN SYSTEM	HOSE	WEIGHT (LBS.)	230v MODEL AVAILABLE
PF25		stainless steel						73	No
PF27	20 gal.	steel w/ epoxy	2.5 hp peak	94 / 84"	120V / 60Hz 30' - 18/3	tank valve	1.5" x 10'	75	No
PF27HM		steel w/ epoxy						78	No
C101M	20 gal.	paper bag, 5 pak							
G753		cloth filter bag assembly							



3.5 GALLON PORTABLE SPOTTERS

The Powr-Spotter is portable, lightweight and extremely powerful. It is perfect for touch-up cleaning and spot removal between scheduled carpet cleanings, and congested areas where larger extractors just won't fit. The PS35 takes the hassle out of cleaning spots before they become major stains. The PS35 is available in three configurations for spot cleaning, small area carpet cleaning and automotive detailing.



10' stretch hose provides maximum flexibility



Shown with optional Spotting Kit

- Powerful 2-stage vacuum motor and 60 p.s.i. for deep cleaning
- Large 3.5 gallon solution and 2.5 gallon recovery tank for extended cleaning between refills
- Aluminum telescopic handle makes transporting a breeze and it slides easily back into the unit for storage
- Can use up to 240° water
- Expandable solution and vacuum hose on PS35 stretches from 2.5' to 10' - PS35E & PS35ER come with standard 10' hose
- Comes complete with upholstery tool, wheels and transport handle
- PS35ER also comes with a floor wand for small area carpet cleaning
- Unit Dimensions: 22"L x 13"W x 24"H



Item# PS35
10' stretch hose and tool fit right on machine



Item# PS35ER
with floor wand, detail tool and 10' hose

ASSEMBLED IN TEXAS

Warranty: 5 years tanks and frame, 1 year vac motor, pump and parts**

ITEM#	USAGE	SOLUTION & RECOVERY TANK	VAC MOTOR (UL LISTED)	CFM WATERLIFT	P.S.I.	HAND TOOL / WAND	HOSES	WEIGHT (LBS.)	230v MODEL AVAILABLE
PS35	carpet cleaner car wash rental	3.5 gal.-solution 2.5 gal.-recovery	1.5 hp 2-stage	104 89"	60	AA163 upholstery	2.5 to 10' stretch	36	Yes
PS35E						AA195 upholstery	10' hose		Yes
PS35ER						PFX-NS floor wand & detail tool			Yes
SPKT		spotting kit							



EXTRACTORS

3 GALLON SELF-CONTAINED

Anyone can use it! The PFX3S offers quick and easy one-pass carpet cleaning and has all the features you would look for in a self-contained extractor. Great for use in homes and small commercial facilities alike, the PFX3S is easy to maneuver in tight areas. The powerful 111 CFM and 92" waterlift produces the power for any cleaning job.



- Simple to use controls makes training easy for the novice as well as experienced operators
- Thermal overload protection prevents damage by inexperienced users
- Reduce clogging and streaking with easy to remove and clean spray jet
- Deep cleaning chevron style brush for aggressive agitation
- Ergonomic handle operated solution lever reduces operator fatigue
- 35' 16/3 cord
- Unit Dimensions: 20"L x 14"W x 27"H



Waste water disposal is easy with the "no slosh" lift-off recovery tank.



Handle folds down for storage



Optional upholstery cleaning kit for easy cleaning of upholstery and curtains
Item# PFX3S-KNS

Warranty: 5 years tanks and frame, 1 year vac motor, pump and parts

ITEM#	SOLUTION & RECOVERY TANK	CLEANING PATH	VAC MOTOR (UL LISTED)	CFM	WATERLIFT	P.S.I.	PUMP	WEIGHT (LBS.)	230v MODEL AVAILABLE
PFX3S	3.5 gal.-solution 3 gal.-recovery	12"	1.5 hp 2-stage	111	92"	20	solenoid	51	No
PFX3S-KNS	upholstery cleaning kit, includes hose, upholstery tool and carry bag								



9 GALLON SELF-CONTAINED



The Powr-Flite Prowler self-contained extractor provides maximum productivity in large areas with the added flexibility of attaching additional tools for cleaning spots, stairs and upholstery. The PFX900S provides superior cleaning power with a 1300 RPM floating chevron style brush head that maximizes agitation and leaves carpets cleaner than traditional self-contained extractors. This machine is great for use in medium-sized offices, schools, healthcare facilities and hotels.

- Compact size for easy transportation and storage
- Separate vacuum, brush and pump switches make operator training a breeze
- Fixed vacuum shoe with floating brush head for maximum cleaning performance and water recovery
- Heavy-duty polyethylene body provides long lasting durability
- Powerful 3-stage vacuum motor maximizes recovery for faster drying times
- Unit Dimensions: 38"L x 19"W x 36"H



Easily attach an upholstery tool



Optional upholstery kit (Item# PFX900S-KNS)



Longlasting stainless steel brush housing features two easy removable spray jets for even spray pattern

**ASSEMBLED
IN TEXAS**



Warranty: 5 years tanks and frame, 1 year vac motor, pump and parts

ITEM#	SOLUTION & RECOVERY TANK	CLEANING PATH	VAC MOTOR (UL LISTED)	CFM	WATERLIFT	P.S.I.	PUMP	WEIGHT (LBS.)	230v MODEL AVAILABLE
PFX900S	9 gal.-solution 9 gal.-recovery	17"	1.9 hp 3-stage	92	120"	100	demand by-pass	162	Yes
PFX900S-KNS	upholstery cleaning kit, includes hose, upholstery tool and carry bag								



EXTRACTORS

5 - 10 - 15 GALLON BOX EXTRACTORS

Powr-Flite Box Extractors are known for the heavy-duty fiberglass construction that keeps them running for years longer than similar models. With models ranging from 5 to 15 gallons available with or without an inline heater, you can choose a model that best fits your specific needs.

- Extremely easy to maneuver with swivel casters and wide wheel base for easy trafficking over carpeting
- Independent motor and pump switches - heated models also have a separate heater switch, heater indicator light and dual power cords
- Electrical receptacle for powered accessories such as the PEB Powr-Extractor Brush
- Heated models come with the "Insider Hose" for temperatures up to 180° and includes a 1750 watt inline heater for maximum cleaning power
- Unit dimensions:
 5 Gallon - 23"L x 16"W x 23"H
 10 Gallon - 33"L x 20"W x 26"H
 15 Gallon - 33"L x 22"W x 26"H



Item# PFX5S-NW
with optional wand



Item# PFX15H-NW
insider hose shown



Warranty: 5 years housing and frame, 3 years on heater (heated models only), 1 year parts

ITEM#	SOLUTION & RECOVERY TANK	VAC MOTOR (UL LISTED)	CFM	WATER LIFT	P.S.I.	VOLTAGE / POWER CORD	HOSES	WEIGHT (LBS.)	230v MODEL AVAILABLE
PFX5S-NW	5 gal.-solution 4.5 gal.-recovery	single 1.9 hp 3-stage	92	136"	45	120V / 60Hz 30' - 12/3 1 cord	10 ft. TMHD®	72	Yes
PFX10S-NW	10 gal.-solution 8.5 gal.-recovery	dual 1.5 hp 2-stage	97	150"	100		15 ft. TMHD®	100	Yes
PFX15S-NW	15 gal.-solution 12.75 gal.-recovery						25 ft. TMHD®	111	Yes
PFX10H-NW heated	10 gal.-solution 8.5 gal.-recovery					120V / 60Hz 30' - 12/3 2 cords	20 ft. insider	108	Yes
PFX15H-NW heated	15 gal.-solution 12.75 gal.-recovery							120	Yes



COLD WATER MID SIZE & FULL SIZE



Powr-Flite's mid-size and full-size cold water extractors have the power to perform and provide the results you expect! The cold water series has the perfect combination of performance and portability. They are perfect for residential and commercial cleaning including apartments, motels and restaurants, and are perfect rental machines. Loaded with cleaning power, the 10 gallon PFX1080 and the 13 gallon PFX1380's large transport wheels, along with the handle mounted loading wheels, make them easy to transport, load and unload. Combine heavy-duty construction with the highest quality components and the Powr-Flite cold water series extractors are perfect for cleaning carpets, upholstery, drapes and more!



Full-size
13 gallon shown
with optional wand

**ASSEMBLED
IN TEXAS**



Mid-size
10 gallon

- Available in 10 gallon or 13 gallon solution tanks for maximum productivity in any job
- Dual 2-stage vac motors remove more water and soil, extends carpet life and improves indoor air quality
- Pumps available in 100, 200 and 500 p.s.i.
- Convenient drain hose allows for easy disposal of waste water
- Wand, hose and cords all store right on the machine on 13 gallon models
- Includes hoses and powercord(s)
- Unit dimensions:
10 Gallon - 25"L x 20"W x 34"H
13 Gallon - 35"L x 22"W x 45"H



Wheeled handle for easy
loading and unloading

Warranty: 5 years tanks, 1 year vacuum motor, pump and workmanship

ITEM#	SOLUTION & RECOVERY TANK	VAC MOTOR (UL LISTED)	CFM/ WATERLIFT	P.S.I.	SOLUTION PUMP	VACUUM/ SOLUTION HOSE	POWER CORDS REQ'D	WEIGHT (LBS.)	230v MODEL AVAILABLE
PFX1080	10 gallon	dual 1.5 hp 2-stage	97/150"	100	Demand by-pass	20 ft.	1	84	Yes
PFX1082				50-200		20 ft. Insider		95	Yes
PFX1085				50-500		20 ft.		95	Yes

Warranty: 5 years tanks, 1 year vacuum motor, pump and workmanship

ITEM#	SOLUTION & RECOVERY TANK	VAC MOTOR (UL LISTED)	CFM/ WATERLIFT	P.S.I.	SOLUTION PUMP	VACUUM/ SOLUTION HOSE	POWER CORDS REQ'D	WEIGHT (LBS.)	230v MODEL AVAILABLE
PFX1380	13 gallon-solution 11 gallon-recovery	dual 1.5 hp 2-stage	97/150"	100	Demand by-pass	20 ft.	1	116	Yes
PFX1382				50-200		20 ft. Insider		122	Yes
PFX1385				50-500		20 ft.		128	Yes



EXTRACTORS



HOT WATER MID-SIZE & FULL-SIZE

Add heat to your cleaning arsenal with Powr-Flite's hot water extractors! Hot water adds cleaning power by dissolving many types of soil including grease and oil, and reduces the levels of biological contamination in the carpeting. PFX1080 10 gallon & PFX1380 13 gallon hot water extractors share all the standard features found on the cold water models with the added power of a heated cleaning solution.

- 1750 watt in-line electric heaters provide superior cleaning power on the toughest dirt, grease and grime
- Available in 10 gallon or 13 gallon solution tanks for maximum productivity
- Pumps available in 100, 200 and 500 p.s.i.
- Dual 2-stage vac motors provide excellent solution recovery, allowing carpets to dry faster
- Front mounted adjustable pressure gauge and recessed brass hose connector on 200 and 500 p.s.i. units
- Unit dimensions:
10 Gallon - 25"L x 20"W x 34"H
13 Gallon - 35"L x 22"W x 45"H

**ASSEMBLED
IN TEXAS**



Easily accessible front mounted pressure gauge and brass hose connector



Mid-Size 10 gallon

Full-Size 13 gallon

Warranty: 5 years tanks, 1 year vacuum motor, pump and workmanship

Item#	SOLUTION & RECOVERY TANK	VAC MOTOR (UL LISTED)	CFM/WATERLIFT	P.S.I.	SOLUTION PUMP	VACUUM/SOLUTION HOSE	POWER CORDS REQ'D	WEIGHT (LBS.)	230v MODEL AVAILABLE
PFX1080E	10 gallon	dual 1.5 hp 2-stage	97/150"	100	Demand by-pass	20 ft. Insider	2	93	Yes
PFX1082E				50-200				95	Yes
PFX1085E				50-500		20 ft.		102	Yes

Warranty: 5 years tanks, 1 year vacuum motor, pump and workmanship

ITEM#	SOLUTION & RECOVERY TANK	VAC MOTOR (UL LISTED)	CFM/WATERLIFT	P.S.I.	SOLUTION PUMP	VACUUM/SOLUTION HOSE	POWER CORDS REQ'D	WEIGHT (LBS.)	230v MODEL AVAILABLE
PFX1380E	13 gallon-solution 11 gallon-recovery	dual 1.5 hp 2-stage	97/150"	100	Demand by-pass	20 ft. Insider	2	108	Yes
PFX1382E				50-200				110	Yes
PFX1385E				50-500		20 ft.		117	Yes



HOT WATER CAR WASH MID-SIZE & FULL-SIZE



Designed specifically for the full-service car wash and mobile detailer, the Powr-Flite PFX1080CW and PFX1380CW extractors have the power to perform and provide the results every car wash professional expects! All models feature waist-high controls, handle mounted transport wheels for easy loading and unloading and large 10" stair climbing wheels for added mobility.

All Powr-Flite CW Extractors include a 20' insider hose with a detailer hand tool and feature an in-line heater to blast out food and pet stains plus grease and oil. With power and pressure choices, the Powr-Flite CW Extractors are the professional's choice for automotive upholstery cleaning and detailing.

- All models feature in-line heater, 20' solution/vacuum hose and detailer hand tool
- Mid-size (10 gal.) and full size (13 gal.) platforms designed for the mobile detailer and full service car wash
- 100 p.s.i. models feature a single, 3-stage vac motor, 1200 watt heater and operate on a single power cord
- 200 p.s.i. models feature dual, 2-stage vac motors, 1800 watt heater and operate on dual power cords
- Unit dimensions:
10 Gallon - 25"L x 20"W x 34"H
13 Gallon - 35"L x 22"W x 45"H



**ASSEMBLED
IN TEXAS**

Warranty: 5 years housing/tanks, 1 year vac motor, pump and parts

ITEM#	SOLUTION/ RECOVERY TANK	VAC MOTOR (UL LISTED)	CFM/ WATERLIFT	P.S.I.	HEATER	VACUUM/ SOLUTION HOSE	POWER CORDS	WEIGHT (LBS.)	230v MODEL AVAILABLE
PFX1080CW	10 gal./10 gal.	single 1.9 hp	97/135"	100	1200 watt	20 ft. Insider	1	93	Yes
PFX1380CW	13 gal./11 gal.	3-stage		100	1200 watt		1	95	Yes
PFX1082CW	10 gal./10 gal.	dual 1.5 hp	97/150"	200	1800 watt		2	102	Yes
PFX1382CW	13 gal./11 gal.	2-stage		200	1800 watt		2	110	Yes

EXTRACTORS



Perfect Heat® MID-SIZE & FULL-SIZE

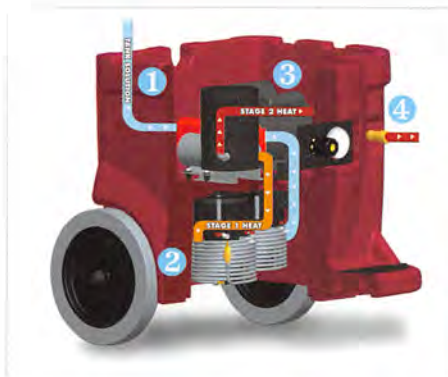
PFX1080 and PFX1380 Perfect Heat® extractors share all the standard features found on the cold water models with the added benefit of the hottest cleaning solution found in a portable extractor without temperature fall off. Heavy-duty construction and the highest quality components combined with the full-size 13 gallon platform or the 10 gallon mid-size compact design make the Powr-Flite Perfect Heat® extractors the perfect choice for carpet care professionals.

Best of all, the Perfect Heat® system requires no additional electric power – no more throwing breakers with too much amp draw. The PFX1080PH and PFX1380PH models heat the water with out an electric heater and run on only one cord at an energy saving 15 amps.

The upgraded models, PFX1080EPH, PFX1082EPH, PFX1380EPH and PFX1382EPH combine the Perfect Heat® technology with a powerful electric heater that produces and maintains the hottest solution temperatures found in any portable extractor.



- Dual, 2-stage vacuum motors provide excellent solution recovery, allowing carpets to dry faster
- Pumps available in 100 and 200 p.s.i.
- PFX1380 model features an exclusive handle mounted transport wheels for easy loading and unloading
- Unit dimensions: 10 Gallon - 25"L x 20"W x 34"H
Unit dimensions: 13 Gallon - 35"L x 22"W x 45"H



How Perfect Heat® works

- 1 Water is delivered from the tank to the pump
- 2 The Perfect Heat® coils maintain hot water
- 3 The electric heater super heats the already preheated water
- 4 A steady supply of hot water is sent to the wand

Warranty: 5 years housing/tanks, 1 year vac motor, pump and parts

ITEM#	SOLUTION & RECOVERY TANK	VAC MOTOR (UL LISTED)	CFM/ WATERLIFT	P.S.I.	HEATER	VACUUM/ SOLUTION HOSE	POWER CORDS	WEIGHT (LBS.)	230v MODEL AVAILABLE
PFX1080PH		dual		100	Perfect Heat®		1	93	Yes
PFX1080EPH	10 gal.-solution	1.5 hp	97/150"	100	1750 watt heater w/Perfect Heat®	20 ft. Insider	2	95	Yes
PFX1082EPH	10 gal.-recovery	2-stage		50-200			2	95	Yes
PFX1380PH		dual		100	Perfect Heat®		1	108	Yes
PFX1380EPH	13 gal.-solution	1.5 hp	97/150"	100	1750 watt heater w/Perfect Heat®	20 ft. Insider	2	110	Yes
PFX1382EPH	11 gal.-recovery	2-stage		50-200			2	110	Yes



BLACK MAX MID-SIZE & FULL-SIZE



BlackMax, the super charged portable with truck-mount power! The Powr-Flite BlackMax extractors combine the power of dual 3-stage vacuum motors, a robust 500 p.s.i. pump, 1800 watt electric heater, and the patented Perfect Heat® system to give you the most powerful portable carpet extractor on the market.

Available in both mid-size and full-size platforms, the Powr-Flite BlackMax Extractors provide the ultimate cleaning power, portability and productivity.

- Patented Perfect Heat® technology maintains the hottest water/solution temperatures in a portable unit
- 1800 watt heater produces temperatures up to 212° F
- Dual 3-stage vac motors provide nearly 50% more waterlift than dual 2-stage vac motors
- Powerful solution pump delivers 1.25 GPM at 500 p.s.i.
- Exclusive handle mounted transport wheels for easy loading and unloading
- Unit dimensions:
10 Gallon - 25"L x 20"W x 34"H
13 Gallon - 35"L x 22"W x 45"H

**ASSEMBLED
IN TEXAS**



Item# PFX1085MAX



BlackMax extractors provide exceptional cleaning power



Item# PFX1385MAX

Warranty: 5 years housing/tanks, 1 year vac motor, pump and parts

ITEM#	SOLUTION & RECOVERY TANK	VAC MOTOR (UL LISTED)	CFM/ WATERLIFT	P.S.I.	HEATER	VACUUM/ SOLUTION HOSE	POWER CORDS	WEIGHT (LBS.)	230v MODEL AVAILABLE
PFX1085MAX	10 gal.-solution 10 gal.-recovery	dual 3-stage	220"	50-500	1800 watt heater with Perfect Heat®	20 ft.	2	104	Yes
PFX1385MAX	13 gal.-solution 11 gal.-recovery						2	119	Yes



EXTRACTORS



AIRWATT MID-SIZE COLD WATER EXTRACTOR



ASSEMBLED IN TEXAS

Powr-Flite's new airwatt powered carpet extractors transform portable extractors; providing a new level of industry performance. The Powr-Flite Airwatt Series is anything but traditional with a striking new approach to cleaning.

The new revolutionary airwatt motor by Ametek® is on the cutting edge of technology, providing the most advanced, highest performing vacuum motor on the market today.

- Outstanding vac motor performance with an extended two year warranty
- Powerful, single 2-stage fan airwatt vacuum motor outperforms conventional vacuum motors
- Lower amp draw for energy saving cleaning with fewer overloaded breakers, especially in applications where power is at a premium
- New advanced technology airwatt motor is specifically designed for foam and moisture-laden applications

Warranty: 5 years housing/tanks, 2 year motor, 1 year pump and parts

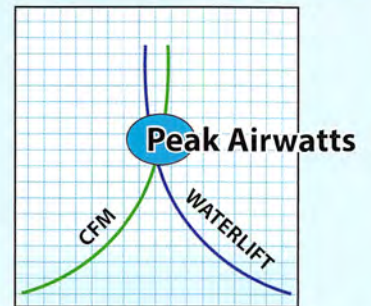
ITEM#	SOLUTION & RECOVERY TANK	VAC MOTOR (UL LISTED)	AIRWATTS	P.S.I.	HEATER	SOLUTION PUMP	VACUUM/ SOLUTION HOSE	POWER CORDS	WEIGHT (LBS.)	230v MODEL AVAILABLE
PFX1080AW	10 gal.-solution 10 gal.-recovery	1, 6.6" 2-stage Airwatt	625	100	no	Shur-Flo	20 ft.	1	85	Yes

Our NEW Airwatt vac motor will...

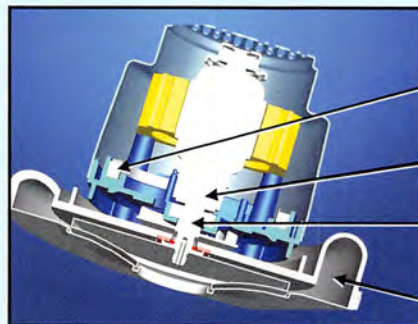
Airwatts - the best measure of cleaning power

Airwatts is the measurement of the cleaning/recovery power. Extractor performance has long been measured by CFM and Waterlift – Airwatt technology provides the best of both by measuring the peak performance of airflow (CFM) and suction (waterlift) at the peak performance level of operation. While long used to measure vacuum performance, especially central vacuums, Airwatts is a new concept for the extraction market.

Airwatts provide a more efficient measurement of how an extractor will perform for optimum performance.



Powerful, single 2-stage 6.6" motor outperforms two conventional vacuum motors



- 'Eternity' brushes — Curved in shape to improve life
- Cooling Fan/Commutator relocated to minimize noise & improve cooling
- Designed to maximize cooling airflow through the hottest areas of the motor
- Single frame fan shell on multi-stage models minimizes risk of damage during transport



AIRWATT MID-SIZE HOT WATER EXTRACTOR



The new Airwatt PFX1085EAW extractor takes cleaning to a new level with the power, heat and exceptional cleaning power that achieved CRI Gold from the Carpet and Rug Institute. This extractor brings the “heat” with an unparalleled performance level in a portable extractor.

Performance is also boosted with the high quality CAT pump known as the most dependable, longest-lasting and low-maintenance high-pressure pumps available.

- State-of-the-art, patent-pending bearing design virtually eliminated bearing failure – the number one failure on carpet extractor vacuum motors
- Innovative patented curved ‘Eternity’ carbon brush extends brush life over twice that of standard carbon brushes
- High efficiency new cooling fan design keeps motor running cooler
- More durable than ever, these extractors will keep cleaning for years and years – extended vacuum motor life last 2 to 3 times longer



ASSEMBLED IN TEXAS



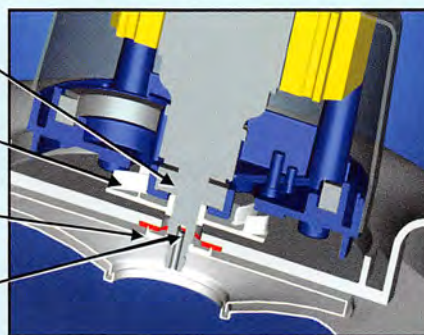
Warranty: 5 years housing/tanks, 2 year motor, 1 year pump and parts

ITEM#	SOLUTION & RECOVERY TANK	VAC MOTOR (UL LISTED)	AIRWATTS	P.S.I.	HEATER	SOLUTION PUMP	VACUUM/ SOLUTION HOSE	POWER CORDS	WEIGHT (LBS.)	230v MODEL AVAILABLE
PFX1085EAW	10 gal.-solution 10 gal.-recovery	1, 6.6" 2-stage Airwatt	625	50-500	1650 watt	CAT	20 ft.	2	116	Yes

...revolutionize portable extractors!

State-of-the-art bearing protection for longer lifecycles

- Bearings moved to clean dry area of motor
- Additional protection from relocated Cooling Fan (between fan system and bearing)
- Isolated with a seal
- Additional bypass prohibits water near dry area - secondary bearing protection



Nationally Recognized Authority in Commercial Flooring

“The new AirWatt Motor from Powr-Flite is a game changer. It addresses the number one service issue we see with carpet extractors, which is bearing and vac motor failure due to the foam and moisture laden environment. As an added bonus, the low amp draw of the motor provides a margin of error, helping to avoid blowing building circuit breakers and maximizing worker productivity.”

Charles DiGisico of ReSource New Jersey, Inc., has 23 years of experience in the commercial floor care and Jan/San industries. Mr. DiGisico is a well-respected commercial floor care industry educator, author, trainer, and speaker.



FLOOR MACHINES



CLASSIC SERIES FLOOR MACHINES

The Classic line of standard speed (175 RPM) floor machines by Powr-Flite combines a rugged all metal floor machine with the most technologically advanced motors, transmissions and electrical components.

Standard 1 hp floor machines deliver aggressive cleaning power for scrubbing, stripping, buffing and polishing.

Heavy-duty 1.5 hp floor machines perform a multitude of cleaning tasks on various flooring types – stripping, scrubbing, sanding, scraping, grinding, shampooing, encapsulation cleaning and bonnet cleaning. You won't find a more versatile floor care machine.

- All metal construction is long lasting and durable
- All metal handle housing, tube and trigger assembly provides long lasting durability
- Low profile design for getting under and around obstructions
- Heavy-duty all steel triple planetary transmissions stand up to the most demanding work
- Thumb activated safety interlock switch prevents accidental start-ups
- Full surround non-marking bumpers help prevent damage to walls and furniture
- High polish chrome finish is chip and corrosive resistant, keeping the Classic looking new longer
- Universal pad driver holder

Shown with optional 4 gal. solution tank

ASSEMBLED IN TEXAS

Shown with optional pad driver
Item# 919DP

Item# C201HD



All metal construction provides years of use



Warranty: 10 years housing, 5 years motor, 3 years transmission and 1 year parts and labor

ITEM#	PAD SPEED	MOTOR	TRANSMISSION	VOLTAGE / POWER CORD	PAD/BRUSH SIZE	WEIGHT (LBS.)	230v MODEL AVAILABLE
C171	175 RPM	1 hp	all steel triple planetary gear box	120V / 60Hz 50' - 14/3	16"-17"	90	Yes
C171HD		1.5 hp			16"-17"	100	Yes
C201		1 hp			19"-20"	95	Yes
C201HD		1.5 hp			19"-20"	105	Yes
717DP	17" pad driver, w/clutch plate and riser						
919DP	19" pad driver, w/clutch plate and riser						
FM90P	4 gallon solution tank						



CLASSIC SERIES DUAL SPEED & SANDING



Dual Speed Floor Machines



Item# C202

Giving you two machines in one, the Powr-Flite Classic dual speed floor machines provide versatility for every type of floor. You get the advantage of a standard 175 RPM for the most aggressive work loads and a high 320 RPM speeds for polishing and spray buffing.

Dual speed 320 RPM machines have the power and speed to spray buff and dry polish tile floors providing excellent results. The craftsmanship and dependability of all metal construction is perfect to handle the most challenging floor maintenance tasks. This machine is built to take the torque associated with bonnet cleaning and heeling of the floor machine.

- Powerful 1.5 hp motor maintains power to perform multiple floor maintenance tasks
- Low profile design for getting under and around obstructions
- Full surround non-marking bumpers help prevent damage to walls and furniture

Sanding Floor Machine

The Classic C171SD 17" sanding floor machine incorporates the same quality and dependability of other Powr-Flite floor machines with the power to do the tough hard floor jobs; sanding, scraping and grinding. Equipped with a heavy-duty sandpaper driver, the C171SD is a great value for contractors and cleaning professionals charged with hard floor maintenance and restoration projects.

- Powerful 1.5 hp, dual capacitor motor starts easily, even with the most aggressive sandpaper
- Heavy-duty all steel triple planetary transmissions stand up to the most demanding wood floor jobs
- All metal base is durable and easy to clean
- Thumb activated safety interlock switch prevents accidental start-ups
- Full surround non-marking bumpers help prevent damage to walls, baseboards and furniture



Item# C171SD

Warranty: 10 years housing, 5 years motor, 3 years transmission and 1 year parts and labor

ITEM#	PAD SPEED	MOTOR	TRANSMISSION	VOLTAGE/ POWER CORD	PAD/ BRUSH SIZE	WEIGHT (LBS.)	230v MODEL AVAILABLE
C172	175/320 RPM dual speed	1.5 hp	all steel triple planetary gear box	120V / 60Hz 50' - 14/3	16"-17"	100	Yes
C202	175/320 RPM dual speed				19"-20"	105	Yes
C171SD	175 RPM includes 17" sand paper driver				17"	100	Yes
DS17	17" pad driver, w/clutch plate and riser for dual speed machines						
DS20	20" pad driver, w/clutch plate and riser for dual speed machines						
SB17M	17" sanding driver w/clutch plate and riser for C171SD						

FLOOR MACHINES



MILLENNIUM EDITION FLOOR MACHINES

Powr-Flite's Millennium edition floor machines have long been a trademark of excellence in floor care. Millennium floor machines feature a patented rotationally molded one-piece housing that reduces the vibration and torque commonly found in other floor machines.

Standard 1 hp floor machines are perfect for jobs with a lower amp demand. These machines deliver aggressive cleaning power for scrubbing, stripping, and buffing – any hard floor job.

Heavy-duty 1.5 hp floor machines provide hard floor care and carpet cleaning systems in one machine – stripping, scrubbing, sanding, scraping, grinding, shampooing, encapsulation cleaning and bonnet cleaning. You won't find a more versatile machine.

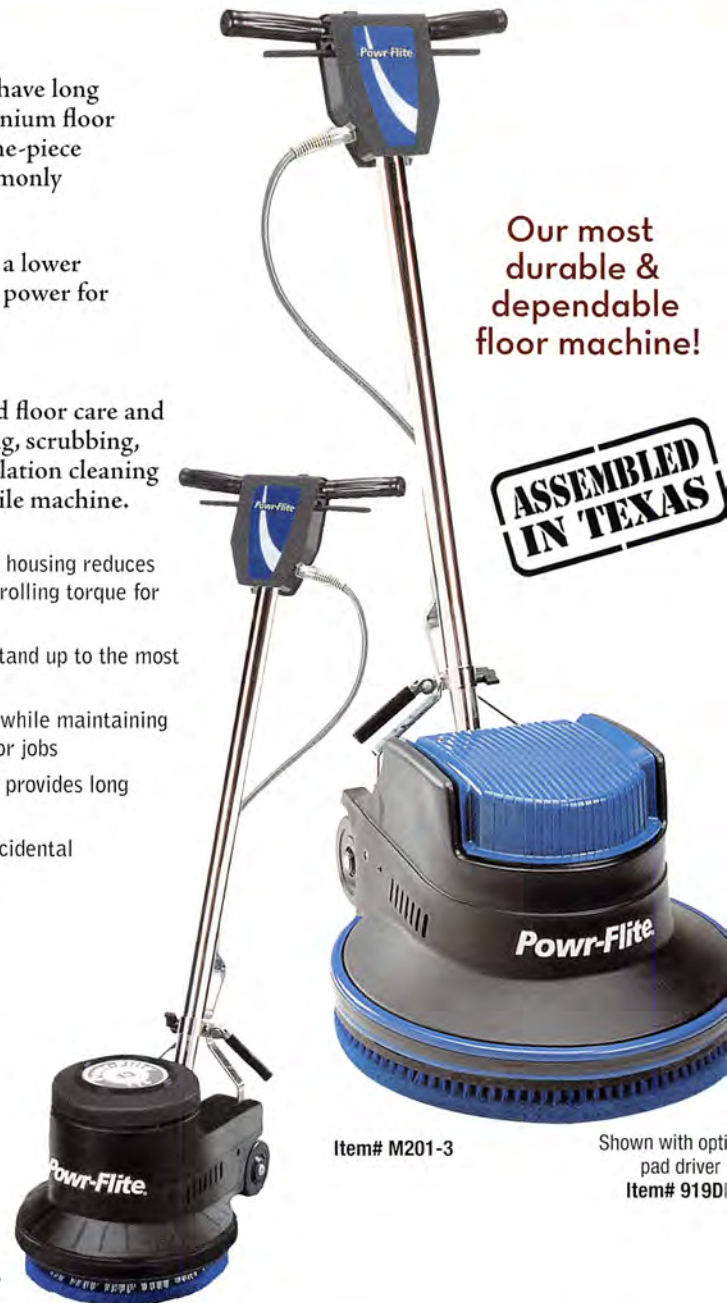
- Patented, heavy-duty, rotationally molded one-piece housing reduces noise for operator safety and absorbs vibration, controlling torque for better operator control
- Heavy-duty all steel triple planetary transmissions stand up to the most demanding work
- Ultra high output motor features a lower amp draw while maintaining the power and torque necessary for the toughest floor jobs
- All metal handle housing, tube and trigger assembly provides long lasting durability
- Thumb activated safety interlock switch prevents accidental start-ups



Ultra low profile design



Easy motor access



Our most durable & dependable floor machine!

ASSEMBLED IN TEXAS

Item# M201-3

Shown with optional pad driver
Item# 919DP

Item# P131-7

Warranty: 10 years housing, 5 years motor, 3 years transmission and 1 year parts and labor

ITEM#	PAD SPEED	MOTOR	TRANSMISSION	VOLTAGE / POWER CORD	PAD/BRUSH SIZE	AGENCY APPROVALS	MACHINE WEIGHT (LBS.)	230v MODEL AVAILABLE
P131-7	175 RPM	.5 hp	all steel single planetary	120V / 60Hz 50' - 14/3	12"-13"	ETL	68	Yes
M171-3		1 hp	all steel triple planetary gear box		16"-17"		97	Yes
M171HD-3		1.5 hp			16"-17"		109	Yes
M201-3		1 hp			19"-20"		99	Yes
M201HD-3		1.5 hp			19"-20"		110	Yes
613DP	pad driver, w/clutch plate for P131-7							
717DP	17" pad driver, w/clutch plate and riser							
919DP	19" pad driver, w/clutch plate and riser							



MILLENNIUM EDITION DUAL SPEED & SANDING



Dual Speed Floor Machines

Incorporating a patented noise and vibration reducing molded housing, the Powr-Flite Millennium dual speed floor machines provide versatility for every type of floor. You get the advantage of a standard 175 RPM for the most aggressive work loads and a high 320 RPM speed with the power and speed to spray buff and dry polish tile floors providing excellent results. This machine is built to take the torque associated with bonnet cleaning and heeling of the floor machine.

- Patented, heavy-duty, rotationally molded one-piece housing reduces noise for operator safety and absorbs vibration, controlling torque for better operator control
- Dual 175 / 320 RPM operating speeds effectively scrubs, strips, spray buffs and polishes every type of floor
- Ultra high output motor features a lower amp draw while maintaining the power and torque necessary for the toughest floor jobs
- Full surround non-marking bumpers help prevent damage to walls and furniture
- Thumb activated safety interlock switch prevents accidental start-ups



Item# M202-3

Sanding Floor Machine

The Millennium 17" sanding floor machine incorporates the same quality and dependability of other Powr-Flite floor machines with the power to do the tough hard floor jobs; sanding, scraping and grinding. Equipped with a heavy-duty sandpaper driver, the Millennium Sander is a great value for contractors and cleaning professionals charged with hard floor maintenance and restoration projects.

- Patented, heavy-duty one-piece, rotationally molded housing reduces noise for operator safety and absorbs vibration, controlling torque for better operator control
- Heavy-duty all steel triple planetary transmissions stand up to the most demanding wood floor jobs
- Powerful 1.5 hp, dual capacitor motor starts easily, even with the most aggressive sandpaper
- Full surround non-marking bumpers help prevent damage to walls, baseboards and furniture
- Thumb activated safety interlock switch prevents accidental start-ups



Item# M171SD-3

Warranty: 10 years housing, 5 years motor, 3 years transmission and 1 year parts and labor

ITEM#	PAD SPEED	MOTOR	TRANSMISSION	VOLTAGE/ POWER CORD	PAD/ BRUSH SIZE	WEIGHT (lbs.)	230v MODEL AVAILABLE
M172-3	175/320 RPM dual speed	1.5 hp	all steel triple planetary gear box	120V / 60Hz 50' - 14/3	16"-17"	109	Yes
M202-3	175/320 RPM dual speed				19"-20"	110	Yes
M171SD-3	175 RPM includes 17" sand paper driver				17"	109	Yes
DS17	17" pad driver, w/clutch plate and riser						
DS20	20" pad driver, w/clutch plate and riser						
SB17M	17" sanding driver w/clutch plate and riser						



BURNISHERS



CLASSIC SERIES BURNISHER

The Powr-Flite Classic burnisher combines the traditional all metal burnisher housing with the most technologically advanced motors, and electrical components, giving you years of worry free service. These machines offer exceptionally smooth operation with a flexible pad driver for consistent results on uneven surfaces. Unlike conventional burnishers, the Classic burnishers' precision balanced weight distribution provides complete pad-to-floor contact and eliminates the need for a compensating caster.

- Powerful 1.5 hp motor, with 1600 RPM pad speed provides consistent results, bringing the shine out of the most worn floors
- Floating handle design lets even the most inexperienced operator achieve a smooth even shine and provides great maneuverability
- Pad driver provides full pad to floor contact conforming to low spots and rising up and over high areas
- All metal base, handle housing, tube and trigger stand up to years of wear and tear
- Thumb activated safety interlock switch prevents accidental start-ups
- Comes complete with flexible pad driver



All metal handle with safety lock-out feature



Warranty: 10 years housing, 2 years motor and 1 year parts and labor

ITEM#	PAD SPEED	MOTOR	TRANSMISSION	VOLTAGE / POWER CORD	PAD DRIVER	WEIGHT (LBS.)	230v MODEL AVAILABLE
C1600-3	1600 RPM	1.5 hp	"V" belt drive	120V / 60Hz 50' - 12/3	20" flexible	89	Yes
X8862	flexible pad driver						

MILLENNIUM EDITION BURNISHERS



Powr-Flite's Millennium edition high-speed electric burnishers provides easy operation, versatility, innovative features, and durable design for use in many different environments. These machines are expertly balanced for ideal pad-to-floor pressure and sustained RPMs. Unlike other burnishers, you get total pad-to-floor contact, without a compensating caster, which means greater efficiency, speed and overall cost-savings. The Millennium Series high speed burnishers provide excellence in design, operator comfort, and unsurpassed burnishing performance.

- Available in 1200, 1600 or 2000 RPM models
- Heavy-duty 1.5 hp motor with low start up and operating amp draw
- Patented rotational molded housing absorbs vibration and minimizes torque for easy operation and control
- Floating handle provides great maneuverability with no "flutter" or pull
- Optimal head weight for maximized pad-to-floor contact, providing the best shine possible
- Low profile for easy maneuverability
- Comes complete with flexible pad driver

**ASSEMBLED
IN TEXAS**



Item# M2000-3



NO COMPENSATION CASTER!
TOTAL PAD-TO-FLOOR CONTACT

Warranty: 10 years housing, 2 years motor and 1 year parts and labor							
ITEM#	PAD SPEED	MOTOR	TRANSMISSION	VOLTAGE / POWER CORD	PAD DRIVER	WEIGHT (LBS.)	230v MODEL AVAILABLE
M1200-3	1200 RPM	1.5 hp	"V" belt drive	120V / 60Hz 75' - 14/3	20" flexible	89	Yes
M1600-3	1600 RPM			120V / 60Hz 75' - 12/3	20" flexible		Yes
M2000-3	2000 RPM			120V / 60Hz 75' - 12/3	20" flexible		Yes
X8862	flexible pad driver						



BURNISHERS

PROPANE AND DIRECT DRIVE BURNISHERS

Propane Burnishers

One propane burnisher can out perform 6 workers with a traditional 20" low speed floor machine, covering 48,000 sq. ft. per hour. Powr-Flite's burnishers feature premium engines that provide superior levels of power for any burnishing job while offering reduced noise and vibration for added operator comfort and reduced disruption to others in the area. Flexible pad drivers provide maximum pad-to-floor contact, even on unlevel floors. Built in safety features keep working environments safe for operators and customers alike. Ease of operation, durability, and reliability make these units the propane-powered cleaning equipment of choice for the floor care professional.

- Powerful and dependable, Kawasaki® engines are CARB and EPA certified and are built with a catalytic converter to help reduce emissions
- Minimum 1850 RPM ensures maximum operational efficiency with the speed and performance to maintain a high gloss shine for large floor areas
- Safety features include an electronic fuel shut-off and a low oil pressure shut-off
- Durable and virtually maintenance free, our propane burnishers have excellent oil control, high torque, and cold starting capacity
- Quick change 80% all steel safety fuel tank increases operator safety and allows nearly continuous operation



Warranty: 2 years parts and workmanship (engines warranted by manufacturer)

ITEM#	CENTRIFUGAL CLUTCH	EMISSION CONTROL	SIZE	PAD SPEED	MOTOR	STARTER	AGENCY APPROVALS	PAD DRIVER	WEIGHT (LBS.)	230v MODEL AVAILABLE
PB2817	n/a	n/a	28"	1850 RPM	17hp Kawasaki FS481V-AS10-M	12V battery starter	Kawasaki engines are EPA and CARB certified.	Full harpoon-face with adjustable pad pressure	281	N/A
PB2817C	yes	n/a								N/A
PB2817E	n/a	yes								N/A
PB2817CE	yes	yes								N/A
CB0528			28" combo pad, 2 per case							
33950			28" pad driver w/riser							

Direct Drive Burnisher

The 20" direct drive P1500-3 burnisher is excellent for removing scuff and heel marks that belt drive or higher revolution burnishers leave behind. The P1500-3's compact design offers easy maneuverability and total operator control of the pad pressure. The direct drive design provides results that surpass higher revolution burnishers because of the combinations of pad pressure, speed and operator control.

- Direct drive system eliminates the use of a belt or gears
- Patented one-piece housing completely reduces handle vibration and protects internal components
- Adjustable pad pressure for use with multiple pads and floor finishes
- All metal handle housing, tube and trigger stand up to years of wear and tear
- Thumb activated safety interlock switch prevents accidental start-ups
- Comes complete with pad driver



Warranty: 10 years housing, 2 years motor and 1 year parts and labor

ITEM#	PAD SPEED	MOTOR	TRANSMISSION	VOLTAGE / POWER CORD	PAD DRIVER	WEIGHT (LBS.)	230v MODEL AVAILABLE
P1500-3	1500 RPM	1.5 hp	Direct Drive	120V / 60Hz • 75' - 14/3	20"	85	No
X8080	pad driver						



AUTOMATIC SCRUBBERS



MULTIWASH 14 MULTI-SURFACE SCRUBBER

The Multiwash 14 offers quiet, high quality cleaning performance, versatility, ease of use and durability. This machine will wash, mop, scrub and dry in a single pass on virtually every kind of floor; even escalators and entrance matting. Go from one floor surface to another with the multiwash – the one scrubber for the entire facility.

The Multiwash gives outstanding results – in a single pass – on most types of hard floor coverings leaving wood, VCT, studded rubber, linoleum, marble, granite, stone, quarry tiles, ceramic floors and non-slip safety floors ready to walk on in minutes. This “all in one” machine can also be used on soft floor coverings including woven and non-woven short pile carpet and carpet tiles. The Multiwash 14 is perfect for use in retail stores, restaurants and food preparation areas.

- Cylindrical brush system provides deep scrubbing at 650 RPMs – over three times higher than rotary brush scrubbers and 4-6 times more contact pressure for superior cleaning
- Save time with self-cleaning brushes – no messy pads to worry about and brushes far outlast pads, using an average of one set of brushes for every 100 floor pads
- Eco-friendly low moisture cleaning uses 30% less chemical and water providing increased savings
- Whisper quiet 69 dB level for day cleaning and noise sensitive applications – meets LEED requirements



Easy to use controls

Move machine easily with optional transport cart



Wall-to-wall cleaning with optional side brush



Multiple brush options for different cleaning tasks



Removable recovery tray for easy waste disposal

Warranty: 5 years housing and 1 year parts and workmanship

ITEM#	CLEANING RATE (SQ. FT./HR.)	SOLUTION/ RECOVERY TANK	CLEANING WIDTH	VOLTAGE/ POWER CORD	MOTOR/ BRUSH SPEED	NOISE LEVEL	WEIGHT (LBS.)	230v MODEL AVAILABLE
PFMW14	3,775	1 gal./4 gal.	13"	120V / 60HZ 40' - 16/3	1 hp /750 watt 650 RPM	69 dB	53	No
PFMWSF	soft brush, gray - 1 pair							
PFMWHBD	hard brush, blue - 1 pair							
PFMWSB	side brush							
PFMWTC	transport cart							

AUTOMATIC SCRUBBERS



AUTOMATIC SCRUBBERS



PREDATOR 14 BATTERY POWERED SCRUBBER

The eco-friendly, low moisture PAS14G automatic scrubber is designed to scrub hard-to-clean areas where a traditional mop and bucket are typically used because of space requirements. Compact and powerful the PAS14G captures the dirt and debris mops leave behind. The cord free operation makes it easier to maneuver in small spaces and there are no safety issues with cords stretched across rooms. The PAS14G scrubber is ideal for confined or small to medium sized areas in fast food restaurants, small retailers, classrooms, hospitals, medical offices and much more.

- Eco-friendly low moisture system saves on chemicals and water
- Low operating noise level of 68 dB is safer for employees, allows for cleaning during business hours and meets LEED standards
- Comes complete with maintenance free gel batteries and integrated onboard charger making it simple to recharge at any location
- Compact 14" cleaning path fits easily down narrow, crowded aisles
- Gets in hard to reach places - low profile and fully adjustable handle make it easy to clean under counters, desks and tables
- Minimize worker fatigue and injury with the ergonomic, adjustable handle – unit fits operators of any height
- Easy maintenance - recovery tank lifts off and the solution tank features an easy to use drain hose for simple disposal of waste water
- Gets excellent results on multiple hard floor types: concrete, terrazzo, marble, slate, stone and vinyl composition



Compact design cleans close to walls



Easy to use with little training



Easy access to motor and battery

Warranty: 10 years housing and 1 year parts and workmanship

ITEM#	SOLUTION/RECOVERY TANK	CLEANING PATH	BRUSH SPEED	MACHINE WT. (LBS.)	230v MODEL AVAILABLE
PAS14G	4.5 gal. / 5.8 gal.	14"	180 RPM	132	Yes
414DP	14" drive block w/clutch plate				
PB414	14" Poly Brush, 1-3/8" trim w/clutch plate				

AUTOMATIC SCRUBBERS

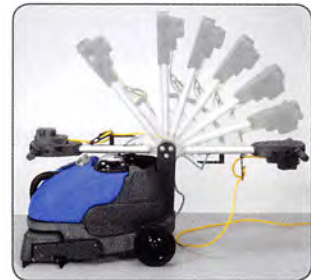


POWR-SCRUB 16 16" COMPACT SCRUBBER



The CAS16 compact automatic scrubber is designed to clean any hard floor type including non-slip, safety or textured floors with exceptional cleaning power. With greater productivity and better performance than traditional mopping, the CAS16 is ideal for small to medium areas such as food service areas and kitchens, entrance lobbies, schools, restaurants, shops and offices. The CAS16 is extremely easy to use – very little training is required and anyone on staff can get expert results.

- 750 RPM high pressure cylindrical brush for maximum cleaning performance on uneven or tiled flooring
- Powerful brush and vacuum action restores ceramic tile floor right down to the grout
- Dual floating squeegees clean and dry in forward and backward for more efficient cleaning and increased productivity
- Cleans right to the edge with the optional add-on side brush
- Simple, no tool brush change
- Compact, low profile design fits easily under tables and furniture
- Quiet 70 dB operator noise level for day cleaning applications – meets LEED requirements



Adjustable folding handle for comfort and storage



16" wide cleaning path with front and rear squeegees for cleaning/drying pushing and pulling the machine



Easy to use controls



Solution and recovery tanks simply lift off for easy emptying and cleaning

Warranty: 1 year parts and workmanship

ITEM#	CLEANING RATE (SQ. FT./HR.)	SOLUTION/RECOVERY TANK	CLEANING WIDTH	VOLTAGE/POWER CORD	BRUSH MOTOR	VACUUM MOTOR	WEIGHT (LBS.)	230v MODEL AVAILABLE
CAS16	12,500	4 gal./ 4 gal.	16"	120V / 60HZ 50' - 14/3	.2 hp 750 RPM	1.5 hp	92	No
CAS58G	heavy-duty brush, blue							
CAS58W	light-duty brush, black							
CAS75	side brush							

AUTOMATIC SCRUBBERS



AUTOMATIC SCRUBBERS

PREDATOR 16 CORD-ELECTRIC SCRUBBER

Economical, compact and lightweight, the Predator 16 goes where other automatic scrubbers can't. The Predator 16 glides easily through close fitting, confining areas including non-standard doors and tight corners and breezes through open spaces. You will cover more floor surface quicker; finishing your stripping and cleaning jobs faster, increasing productivity. When traditional mopping doesn't fit the bill, the Predator 16 is ready to take on any project big or small.

- 290 RPM pad speed tackles the dirtiest floors
- 16" cleaning path that conforms to floor levels with brush assist forward motion
- Convenient foot operated squeegee lift and brush control is simple to use
- Four-wheel design provides complete stability for climbing ramps and inclines
- Heavy-duty polyethylene housing and solution tank on non-corrosive steel frame
- 75' cord provides excellent reach for higher productivity



Easy to use control panel



Convenient drain hose for easy clean up



AUTOMATIC SCRUBBERS

Warranty: 10 years housing and 1 year parts and workmanship								
ITEM#	CLEANING RATE (SQ. FT./HR.)	SOLUTION/ RECOVERY TANK	CLEANING WIDTH	BRUSH MOTOR	VOLTAGE/ POWER CORD	VACUUM MOTOR	WEIGHT (LBS.)	230v MODEL AVAILABLE
PAS16 cord-electric	12,000	5.75 gal./5.75 gal.	16"	1 hp 290 RPM	115V / 60HZ 75' - 14/3	1.25 hp 96 CFM	140	No
PAS96	15" pad driver w/spring hub and pad holder							
PAS97	15" poly stiff scrub brush							



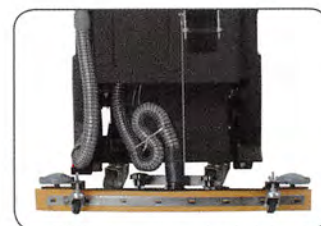
PREDATOR 17 BATTERY POWERED SCRUBBER

Simple controls, easy to use, and easy to transport, the Predator 17 provides excellent scrubbing results on a wide range of hard floor surfaces including tile, linoleum, cement, epoxy and rubberized surfaces. Solution flow is activated by the brush/pad driver to conserve water and cleaning chemicals. Designed for moderately spaced interiors the Predator 17 is ideal for use in schools, hotels, retail shops, restaurants, hospitals and other commercial and industrial applications.

- 200 RPM brush speed provides aggressive scrubbing power for the dirtiest floors
- Low-profile, ergonomic design provides easy maneuverability
- In-line solution capacitor controls solution flow optimizing cleaning times
- Simple control panel includes key switch, battery meter and hour meter
- Keep track of usage hours with convenient hour meter
- Clean up is easy with quick release recovery tank drain
- Comes complete with two 12 volt batteries, charger and pad driver



Removable tank provides easy access



Fully adjustable parabolic swing squeegee provides complete solution recovery even on the tightest turns

Warranty: 5 years housing, 2 years brush motor, 1 year parts and labor

ITEM#	CLEANING RATE (SQ. FT./HR.)	SOLUTION/RECOVERY TANK	CLEANING WIDTH	POWER SUPPLY	BRUSH MOTOR	VACUUM MOTOR	SQUEEGE WIDTH	WEIGHT (LBS.)	230v MODEL AVAILABLE
PAS17BA-BC	13,000	11 gal./12 gal.	17"	24V (2-120V) 105 a.h.	.75 hp 200 RPM	.75 hp, 2-stage tangential discharge	30" parabolic swing	302	Yes Charger
PAS17PD	17" pad driver w/clutch plate and pad holder								

AUTOMATIC SCRUBBERS



PREDATOR 20, 28 & 32 BATTERY POWERED SCRUBBERS

Predator 20 Battery Powered Scrubber



The perfect size for medium to large size scrubbing jobs, the self-propelled Predator 20, with direct drive, will clean 20,000 square feet per hour. The PAS20 features aggressive cleaning power with 90 lbs. of floating brush pressure. Thick slurry is no match for the 3-stage vacuum motor. Maintenance is made simple with easy access to batteries, vacuum motor and tanks, plus a lifetime lubricated differential motor.

- Large 17 gallon solution and recovery tanks clean the biggest jobs without emptying and refilling
- Batteries provide up to 3-4 hours of operation for continuous scrubbing power
- Electronic speed control in forward and reverse
- Dual wheel drive for straight tracking
- Twin swivel casters turn on a dime for easy maneuverability
- Self-propelled with a direct drive system meaning effortless work for the operator
- Durable and long lasting with non-corrosive steel frame and polyethylene tank construction
- Large parabolic adjustable squeegee leaves floors virtually dry even on the tightest turns

Warranty: 10 year housing and 1 year parts and workmanship									
ITEM#	CLEANING RATE (SQ. FT./HR.)	SOLUTION/ RECOVERY TANK	CLEANING WIDTH	POWER SUPPLY	BRUSH MOTOR	VACUUM MOTOR	OPERATING TIME	WEIGHT (LBS.)	230v MODEL AVAILABLE
PAS20-DXBC w/ 2 12V batteries & charger	20,000	17 gal./17 gal.	20"	24V (2-12V) 140 a.h.	.75 hp 225 RPM	.75 hp 3-stage	3-4 hours	372	Yes Charger
PAS10	18" Pad driver								

Predator 28 & 32 Battery Powered Scrubbers



Item# PAS32-DXBC

The Predator 28 and 32 models have a remarkable 5 to 6 hours operating time. Self-propelled with a direct drive system provides straight tracking on slick surfaces and effortless work for the operator. Just set the solution rate and go – the machine does all of the work in one easy pass and leaves the floor clean, dry and ready for immediate use. The squeegee and brush controls are activated with conveniently placed foot pedals.

- Adjustable brush pressure provides smooth consistent brush action even on unlevel and grouted floors
- Independent dual wheel drive in forward and reverse
- Self lubricating traverse differential motor requires no maintenance
- Dual motor brush operation with up to 150 lbs. of brush pressure
- Large parabolic adjustable squeegee leaves floors virtually dry even on the tightest turns

Warranty: 10 years housing and 1 year parts and workmanship									
ITEM#	CLEANING RATE (SQ. FT./HR.)	SOLUTION/ RECOVERY TANK	CLEANING WIDTH	POWER SUPPLY	BRUSH MOTOR	VACUUM MOTOR	OPERATING TIME	WEIGHT (LBS.)	230v MODEL AVAILABLE
PAS28-DXBC w/ 4 6V batteries & charger	27,000	20 gal.	28"	24V (4-6V) 244 a.h.	(2) 14" .5 hp 225 RPM	3-stage 24V	5-6 hours	507	Yes Charger
PAS32-DXBC w/ 4 6V batteries & charger	30,000		32"		(2) 16" .5 hp 225 RPM			590	Yes Charger
PAS69	13" pad driver set for PAS28-DXBC								
PAS961	16" pad driver set for PAS32-DXBC								



POWR-DRYERS

**ASSEMBLED
IN TEXAS**

Floors, walls, upholstery, drapes, any wet surface...the full featured Powr-Dryer has the drying power for everything from delicate drapes to flooded sheetrock. Engineered for high performance and efficiency, Powr-Flite dryers feature maximum airflow in a streamlined housing designed to reduce performance loss.

- Stackable design provides easy transportation and storage
- 3 speed settings for lower amp draw and different drying conditions
- Unique 4-point motor mounting system reduces noise and vibration
- Up to 3 operating positions, PD500 and PD750 models include kickstand for more drying versatility
- DX models feature a telescoping handle and wheels for easy transport
- Meets OSHA standards for maximum weight / size
- Rotationally molded high density polyethylene housing for rugged durability
- Built-in thermal overload protection safeguards components in high heat conditions
- High visibility yellow safety dryer increases safety for customers in high traffic areas



PD750 and PD500 include kickstand



Wheels and telescoping handle on DX models only



ITEM# PD500DX-YS



Transport cart
ITEM# X8990



Universal carpet clamp
ITEM# PD100

Warranty: 5 years housing, 1 year parts and labor

ITEM#	DESCRIPTION	MAX CFM	SPEEDS	CONSTRUCTION	VOLTAGE / POWER CORD	DRYING POSITIONS	SENSORS	WEIGHT (LBS.)	230v MODEL AVAILABLE
PD350	1/3 hp, 4.0 amp	2130	3	roto-molded polyethylene	120V / 60Hz 20' - 16/3	3	thermal shut-off	31	No
PD500	1/2 hp, 4.8 amp	2450						37	Yes
PD500DX	1/2 hp, 4.8 amp, with handle/wheels	2450						42	Yes
PD500DX-YS	1/2 hp, 4.8 amp, with handle/wheels yellow w/caution sign	2450						43	Yes
PD750	3/4 hp, 7.8 amp	2406						42	No
PD750DX	3/4 hp, 7.8 amp, with handle/wheels	2406						45	No
PD100	universal carpet clamp								
X8990	transport cart								



RESTORATION



HYBRID DRYERS



The new Powr-Flite Hybrid dryer combines the best features of a squirrel cage design with the increased drying power of an axial fan. Leveraging "state-of-the-art" engineering, this dryer has an incredible maximum air velocity of 3400 feet per minute in a compact, yet highly efficient size. Carpets dry quickly under the high-volume, high-velocity airflow. Long-lasting and durable, the Hybrid dryer is built with heavy duty, molded polyethylene to withstand the tough, every-day use of contract cleaners, restoration professionals and more.

The revolutionary Powr-Flite Hybrid dryer increases air-flow, drying efficiency, safety and minimizes down time in a room or larger facility.

- Innovative go anywhere design
- Maximum running amp draw of 2.4 amps – no more overloaded, blown circuits
- PDH2 model can daisy chain up to 6 units on one 15 amp circuit with built in power outlet – perfect for restoration when power is at a premium or just faster drying to leave your customers with clean and dry carpet
- Highly portable – weighs 45% less than a typical blower
- Smaller, compact size at only 11.5" high makes it easy to transport or store more dryers in less space



STORE TWO HYBRID DRYERS AND SAVE SPACE!

PDH1 OFFERS 2 POSITIONS!*



PDH2 OFFERS 4 POSITIONS!



BUILT-IN POWER OUTLET CAN DAISY CHAIN 6 PDH2 UNITS TOGETHER



WARM DRY AIR IS PULLED DOWN AND ACROSS THE CARPET FOR FASTER DRY TIMES.

POWR-FLITE HYBRID DRYERS		
ITEM#	DESCRIPTION	230v MODEL AVAILABLE
PDH1	1/2 hp Hybrid dryer	*
PDH2	1/2 hp Hybrid dryer w/daisy chain capability & kickstand	*

* 230v available 3rd quarter of 2013

SHIPPING APRIL 2013!



F5 AXIAL FAN DRYERS

For structural and carpet drying you won't find a more effective dryer than the F5 Axial Fan. The F5 provides a maximum of flexibility combined with high volume, high velocity airflow for the fastest possible drying time. Use the F5 to dry carpets, rugs, padding, subfloors, cabinets, dry wall, paint...anywhere you need high speed drying. The F5 is one of the most effective solutions for structural drying after floods or leaks.



ITEM# PDF5

- High CFM of 3000 dries structures fast
- 2.2 amp draw means fewer blown circuits
- Multiple position versatility for every drying need
- 2 speed motor for maximum versatility in multiple applications
- Heavy-duty design and components provide years of service
- Daisy chain up to 5 together with built-in GFCI outlet
- Plug up to 6 F5 Axial Fans together into one 15 amp circuit



4 different positions for different drying needs



DX model comes complete with handle and wheels for added maneuverability



Stack up to five F5 axial fans for easy transport and storage



Optional caster kit for easy transport and to provide downdraft drying

Warranty: 5 years housing, 1 year parts and labor

ITEM#	DESCRIPTION	MAX CFM	SPEEDS	CONSTRUCTION	VOLTAGE / POWER CORD	DRYING POSITIONS	SENSORS	WEIGHT (LBS.)	230v MODEL AVAILABLE
PDF5	F5 axial fan, 1/4 hp, 2.2 amp								Yes
PDF5DX	F5 axial fan, 1/4 hp, 2.2 amp with handle and wheels	3000	2	roto-molded polyethylene	120V / 60Hz 20' - 16/3	4	circuit breaker	37	Yes
PDF5C	caster kit for PDF5								
X8990	transport cart								



DOWNDRAFT DRYERS

Downdraft® Airmover and Dryer

The F6 Downdraft® dryer provides easy operation, versatility and durability for use in any drying application. The 6-blade precision pitched fan blades pull drier, warmer air from above, driving it down and out across the entire surface of the floor. One Downdraft® dryer will dry an entire room in as little as 15 minutes.

- 3500 CFM 2-speed motor rated for continuous use
- Variable angle operation for drying at 15, 30 or 90 degree angles for maximum drying flexibility
- Heavy-duty casters improve mobility and position unit to optimum height for Downdraft® drying
- Heavy-duty design and components provide years of service
- Stackable design and telescoping handle provide easy transport and storage



Warranty: 5 years housing, 1 year parts and labor

ITEM#	DESCRIPTION	MAX CFM	SPEEDS	CONSTRUCTION	VOLTAGE / POWER CORD	DRYING POSITIONS	SENSORS	WEIGHT (LBS.)	230v MODEL AVAILABLE
PDF6WRD	F6 Downdraft® dryer, 1/4 hp, 3.3 amp	3500	2	polyethylene	120V / 60Hz 20' - 16/3	4	circuit breaker	50	Yes

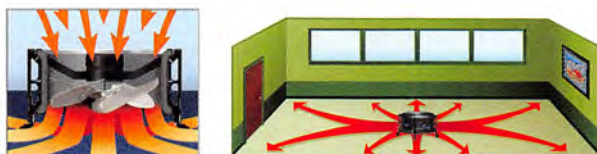
BlackMax Downdraft® Dryer

The Black Max Downdraft® Dryer incorporates the Swept Fan™ blade design that creates an astounding 9800 CFM that maximizes surface coverage and minimizes drying times. Designed for carpet cleaning and restoration professionals, the BlackMax Downdraft® Dryer's unique four-position design allows for the efficient drying of furniture, walls and ceilings as well as carpets.

- 4-blade Swept Fan™ increases CFM which decreases drying time
- 2 speed motor for maximum versatility in multiple applications
- High velocity airflow at over 9,800 CFM dries an average size room in just minutes
- Stack up to 4 BlackMax Downdraft® dryers for easy transport and storage
- Cast aluminum legs feature a built-in cord wrap and carrying handles



Optional kickstand provides an upright position for more flexible drying



Warranty: 10 years housing, 2 years motor, 1 year parts and labor

ITEM#	DESCRIPTION	MAX CFM	SPEEDS	CONSTRUCTION	VOLTAGE / POWER CORD	DRYING POSITIONS	SENSORS	WEIGHT (LBS.)	230v MODEL AVAILABLE
PD10K	BlackMax Downdraft® dryer, 3/4 hp, 3.3 amp to 8.6 amp	9800	2	polyethylene	120V / 60Hz 20' - 16/3	4	circuit breaker	50	Yes
X8874	kickstand								



RESTORATION ACCESSORIES

Powr-Zone Ozone Generator



Don't just cover up odors – remove the molecules that cause them with the Powr-Zone Ozone Generator. Powr-Zone actually eliminates odors and leaves pure, fresh oxygen in its place. This economical unit is ideal for commercial use. It is excellent for smoke damage, mold, mildew, pet odor and other odors commonly found in building maintenance and refurbishing. The Powr-Zone Ozone Generator may be used in any indoor location including basements, kitchens, bathrooms and more. It also provides rapid deodorizing for hotel/motel rooms, meeting rooms, automobiles and boats.

- Produces 1.5 grams/hr. at 7 particles per minute
- Effective for areas up to 60,000 cubic feet
- 12 hour timer with power supply overload protection
- Gas filled arc module electrodes
- Maintenance free - no plates or UV tubes to corrode or clean

Powr-Fogger



The compact fogger is the best choice for open-area and surface deodorizing with water-based disinfectants that are EPA approved for fogging and deodorizing. ULV feature means that extremely small particle sizes can be achieved for highly effective application of an odor control product. The Powr-Fogger sprays up to 25 feet with full room coverage.

Insider Drying System



The IDS1 is designed specifically to dry areas of hidden moisture by forcing air into and behind walls, fire walls, ceilings, sound barriers, insulation, cabinets and fixtures. The Insider Drying System attaches to any standard carpet dryer. Airflow can be directed in up to 17 different directions, placing hoses in locations that a standard dryer cannot reach. Save wet surfaces otherwise unsalvageable with the IDS1 Insider Drying System.



Dryer not included

- Expands the usage of dryer inventory - turns a standard dryer into a versatile restoration tool
- All components are heavy-duty, industrial quality for extra long life
- Includes 17 hose cuffs, 1-1/4" air injectors and 5/8" injectors to dry any area in a typical drying job
- Includes 150' of cut-to-length yellow hose so that hoses can be placed exactly where they are needed

ITEM#	DESCRIPTION	230v MODEL AVAILABLE
PPFZ	Powr-Zone ozone generator	Yes
PF04	Powr-Fogger	No
IDS1	Insider Dryer System	



RESTORATION



FLOOD PUMPS

Designed specifically for water recovery the Gulper II flood pump provides maximum performance for flood restoration. The Gulper II extracts large amounts of water from carpet, bathrooms, and other flooded areas quickly and easily. Waste water is efficiently removed through a standard garden hose to an acceptable area or drain. Water is pumped out automatically – no emptying tanks manually!

- Powerful 5 GPM or 10 GPM models make it easy to remove water constantly without stopping
- Convenient single power cord operation minimizes blown breakers and searching for additional power circuits when electrical power is at a premium
- 25 feet of 2" vacuum hose provides higher CFM, without clogging on small debris, and combined with a standard garden hose provides a large coverage area
- Stainless steel large debris filter prevents debris from clogging pumps, capturing leaves and other objects for easy removal
- Large 2" wands are available for carpet and hard floor water recovery



Shown with optional wand (Item# FPW)

**ASSEMBLED
IN TEXAS**



Optional squeegee wand
Item# PF86-S



Connect an ordinary garden hose for handy waste water discharge



Convenient waist high, extra large filter catches large debris



Discharge pump located in equipment bay rather than recovery tank

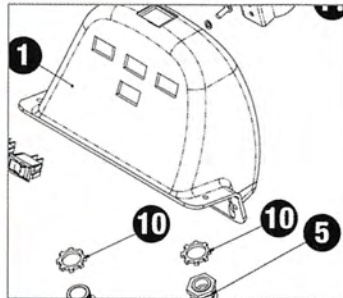
Warranty 5 years housing, 1 year motor, parts and workmanship

ITEM#	DESCRIPTION	RECOVERY TANK	INTAKE HOSE	VAC MOTOR	CFM	WATERLIFT	DISCHARGE RATE	DEBRIS FILTERS	WEIGHT (LBS.)	230v MODEL AVAILABLE
PF85	5 GPM flood pump	15 gallon	2" x 25'	single 3-stage	92	135"	5 GPM	(2) 50 mesh	123	No
PF85DX	10 GPM flood pump						10 GPM		132	No
FPW	2" diameter Gulper wand									
PF86-S	2" x 15" squeegee wand									



The Right Equipment at the Right Time

There's more to cleaning a facility than just a mop and bucket. Powr-Flite offers cleaning technologies and equipment to help your customers sky-rocket productivity, improve facility cleanliness, safety and grow profits. We combine over 45 years of cleaning know-how to help you deliver quality equipment, parts and accessories to meet your customer's daily cleaning demands. The results? Your customers get reliable equipment that delivers bottom-line savings each and every day!



Getting the Job Done

Plus, we know how important it is to avoid equipment downtime. That's why we **stock more parts than anyone else and offer same-day shipping** so your customers can keep right on cleaning. Powr-Flite makes it so easy.

IDEAL FOR LITERALLY ANY TYPE OF FACILITY



RETAIL



HEALTHCARE



HOSPITALITY



BUILDING SERVICE CONTRACTORS



EDUCATION



COMMERCIAL FACILITIES



INDUSTRIAL



GOVERNMENT



TRANSPORTATION

Powr-Flite

BETTER QUALITY · BETTER PRICES · GUARANTEED

A Tacony Company

3101 Wichita Court, Ft. Worth, TX 76140

Your Trusted Source for 45 Years!

800.880.2913

| www.powr-flite.com

Printed January 2013

