

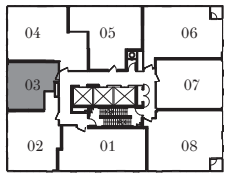
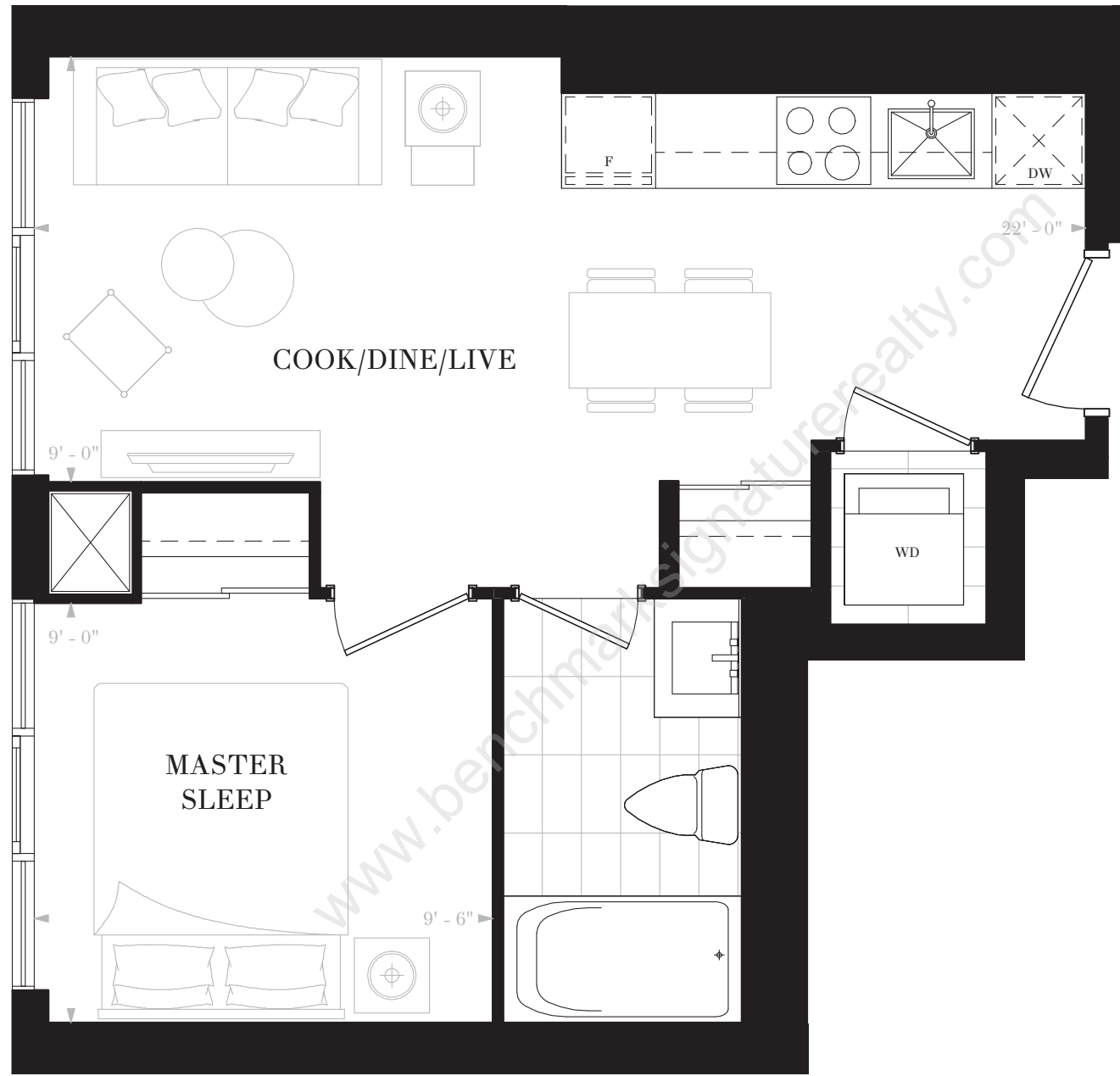
NOBU
RESIDENCES
TORONTO

SUITE E1B

1 BEDROOM

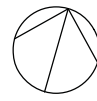
1 BATH

INTERIOR: 427 SF



FLOORS 13-19, 28-35

Any stated areas and/or dimensions shown are approximate only and subject to normal construction variances. Actual usable floor space may vary from any stated or depicted floor area. The layout of the suite may be reversed depending on the location of the unit within the project. Any furniture depicted is for illustration purposes only and does not necessarily reflect the electrical plan of the unit. Windows behind the cladding, installed as a design element, may be spandrel or vision glass. The view from or through the windows to the exterior may be partially obstructed by materials affixed to the exterior cladding of the building as part of an overall design element. Any and all sizes and/or specifications are subject to change without notice. All illustrations are artist's concept only. E. & O. E. May 2017



NOBU

RESIDENCES

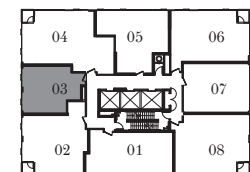
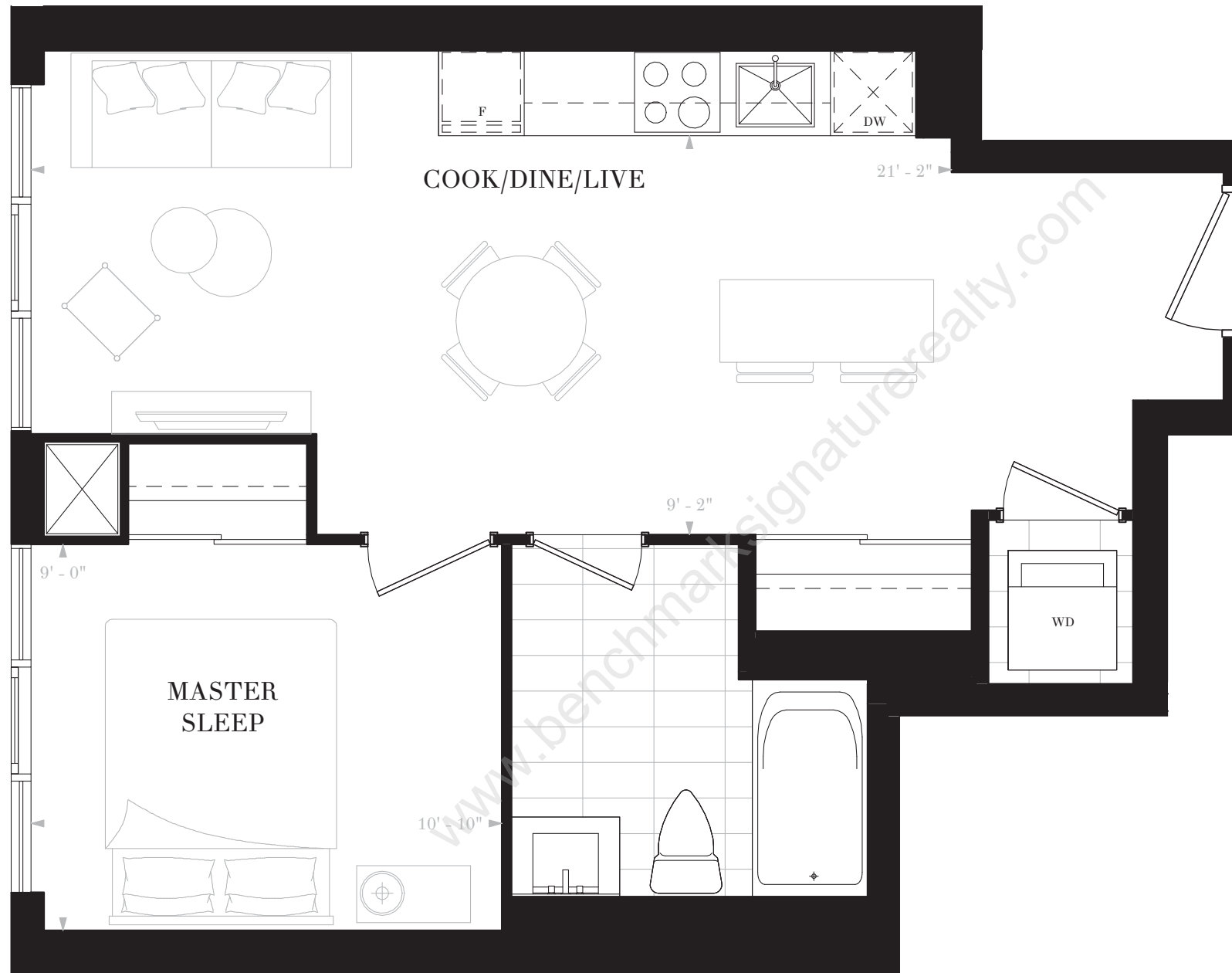
TORONTO

SUITE E1C

1 BEDROOM

1 BATH

INTERIOR: 527 SF

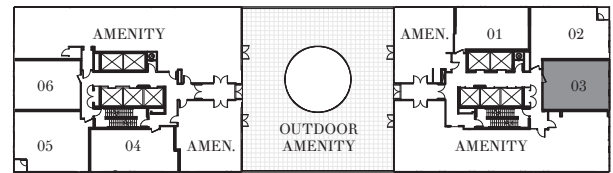
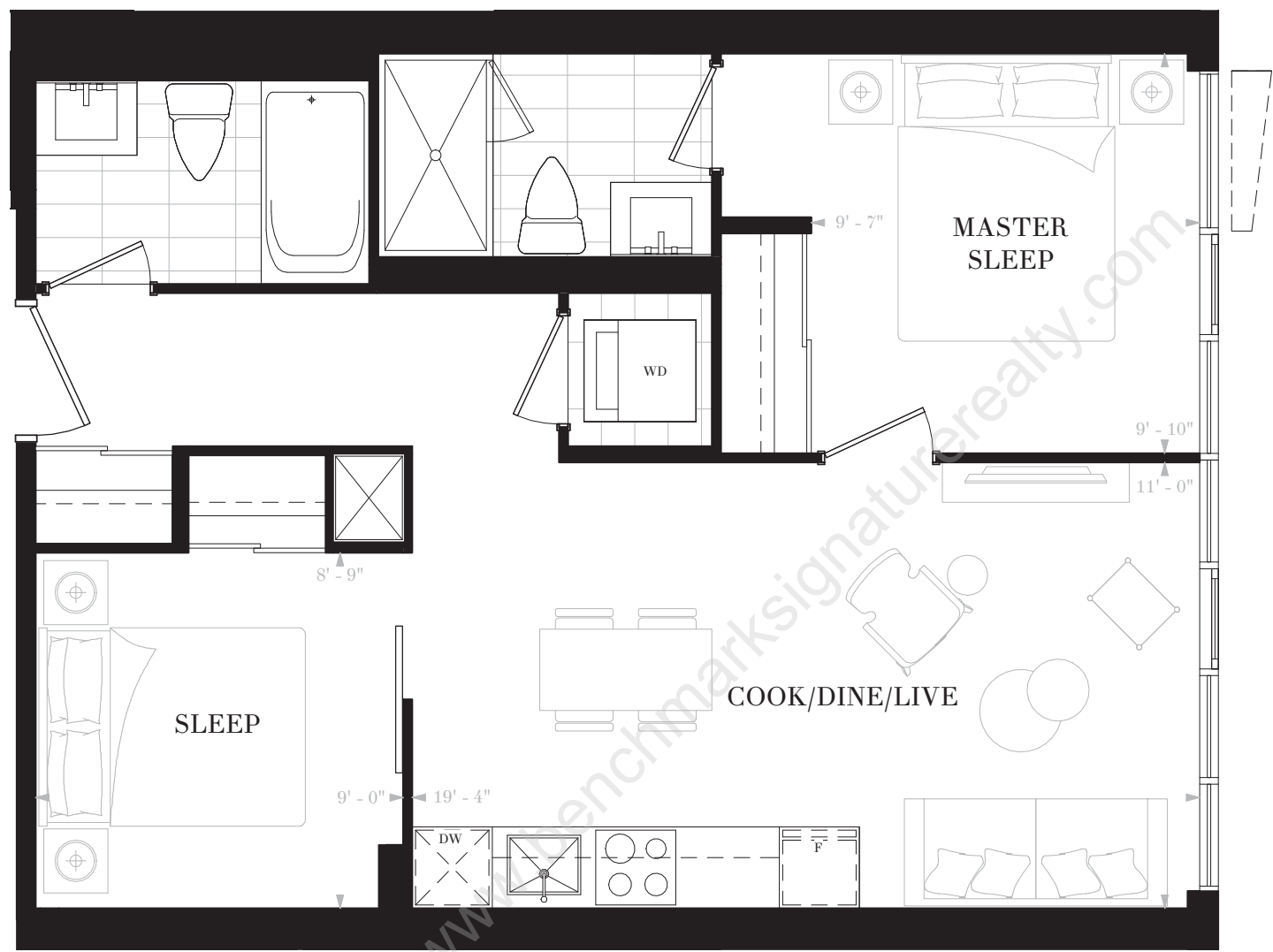


FLOORS 20-27

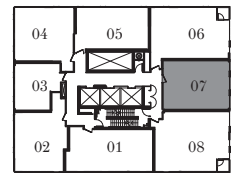


NOBU
RESIDENCES
TORONTO

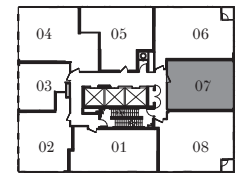
SUITE E2B
2 BEDROOMS
2 BATHS
INTERIOR: 652 SF



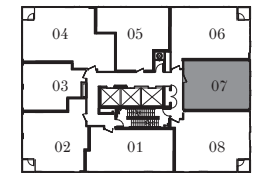
FLOOR 10



FLOORS 11-12



FLOORS 13-19, 28-35



FLOORS 20-27



FLOORS 10-11, 14-15, 18-19,
22-23, 26-27, 30-31, 34-35



FLOORS 12-13, 16-17,
20-21, 24-25, 28-29, 32-33

Any stated areas and/or dimensions shown are approximate only and subject to normal construction variances. Actual usable floor space may vary from any stated or depicted floor area. The layout of the suite may be reversed depending on the location of the unit within the project. Any furniture depicted is for illustration purposes only and does not necessarily reflect the electrical plan of the unit. Windows behind the cladding, installed as a design element, may be spandrel or vision glass. The view from or through the windows to the exterior may be partially obstructed by materials affixed to the exterior cladding of the building as part of an overall design element. Any and all sizes and/or specifications are subject to change without notice. All illustrations are artist's concept only. E. & O. E. May 2017



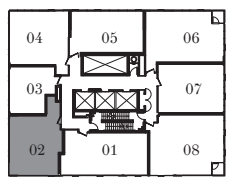
NOBU
RESIDENCES
TORONTO

SUITE E2C

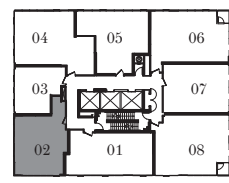
2 BEDROOMS

2 BATHS

INTERIOR: 667 SF



FLOORS 11-12



FLOORS 13-19, 28-35

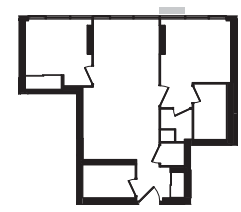
NOBU
RESIDENCES
TORONTO

SUITE E2E

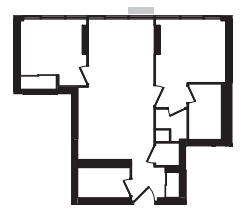
2 BEDROOMS

2 BATHS

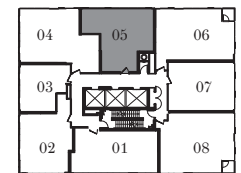
INTERIOR: 719 SF



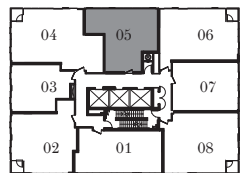
FLOORS 13, 16-17, 20-21,
24-25, 28-29, 32-33



FLOORS 14-15, 18-19,
22-23, 26-27, 30-31, 34-35



FLOORS 13-19, 28-35



FLOORS 20-27

Any stated areas and/or dimensions shown are approximate only and subject to normal construction variances. Actual usable floor space may vary from any stated or depicted floor area. The layout of the suite may be reversed depending on the location of the unit within the project. Any furniture depicted is for illustration purposes only and does not necessarily reflect the electrical plan of the unit. Windows behind the cladding, installed as a design element, may be spandrel or vision glass. The view from or through the windows to the exterior may be partially obstructed by materials affixed to the exterior cladding of the building as part of an overall design element. Any and all sizes and/or specifications are subject to change without notice. All illustrations are artist's concept only. E. & O. E. May 2017



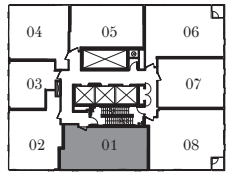
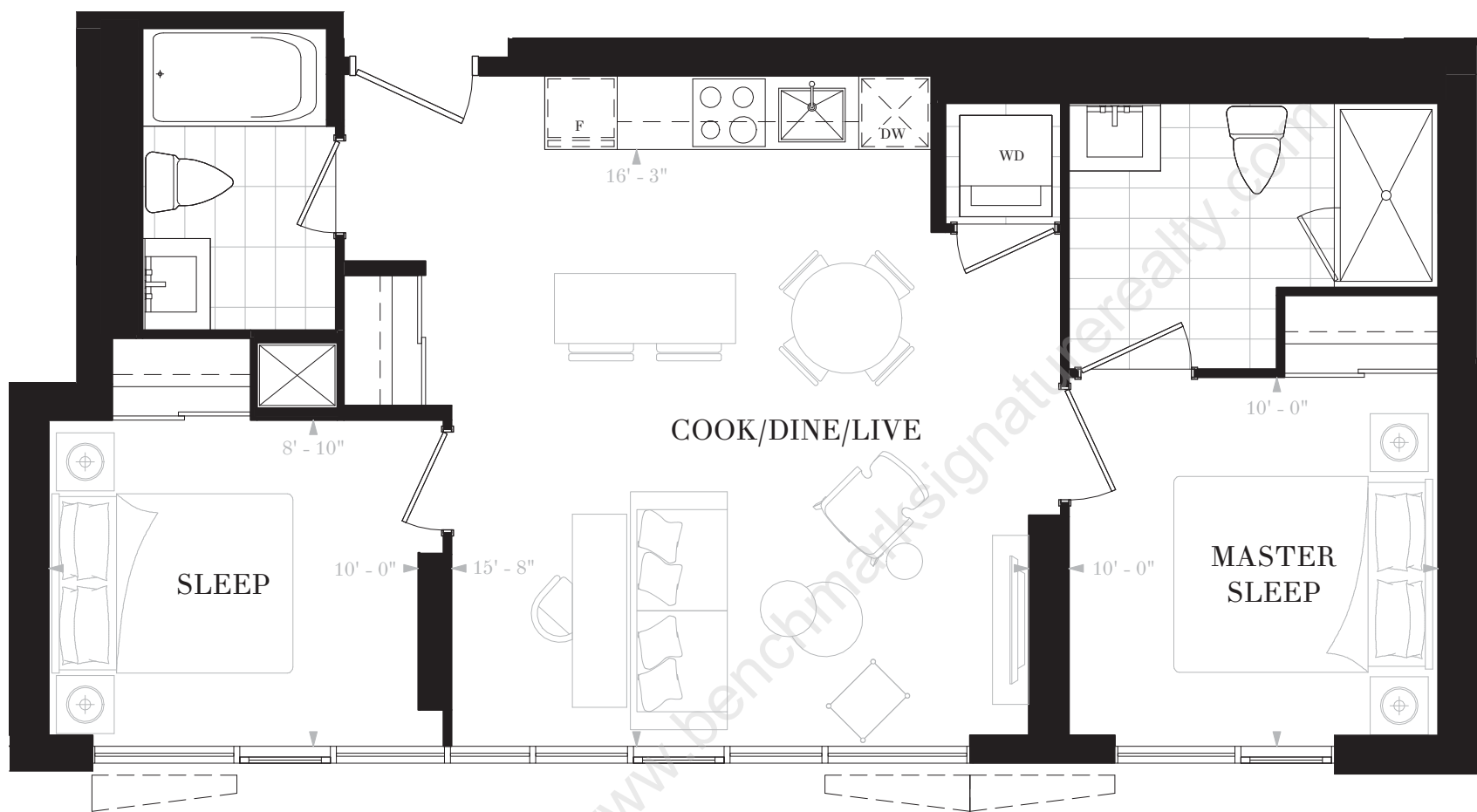
NOBU
RESIDENCES
TORONTO

SUITE E2F

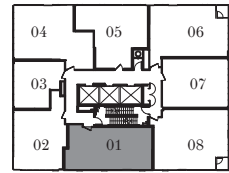
2 BEDROOMS

2 BATHS

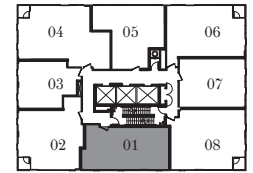
INTERIOR: 748 SF



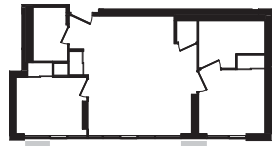
FLOORS 11-12



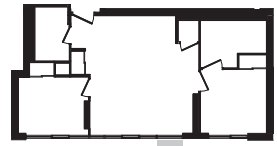
FLOORS 13-19, 28-35



FLOORS 20-27



FLOORS 11, 14-15, 18-19,
22-23, 26-27, 30-31, 34-35



FLOORS 12-13, 16-17, 20-21,
24-25, 28-29, 32-33

Any stated areas and/or dimensions shown are approximate only and subject to normal construction variances. Actual usable floor space may vary from any stated or depicted floor area. The layout of the suite may be reversed depending on the location of the unit within the project. Any furniture depicted is for illustration purposes only and does not necessarily reflect the electrical plan of the unit. Windows behind the cladding, installed as a design element, may be spandrel or vision glass. The view from or through the windows to the exterior may be partially obstructed by materials affixed to the exterior cladding of the building as part of an overall design element. Any and all sizes and/or specifications are subject to change without notice. All illustrations are artist's concept only. E. & O. E. May 2017



NOBU

RESIDENCES

TORONTO

SUITE E2G

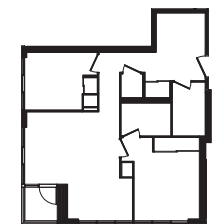
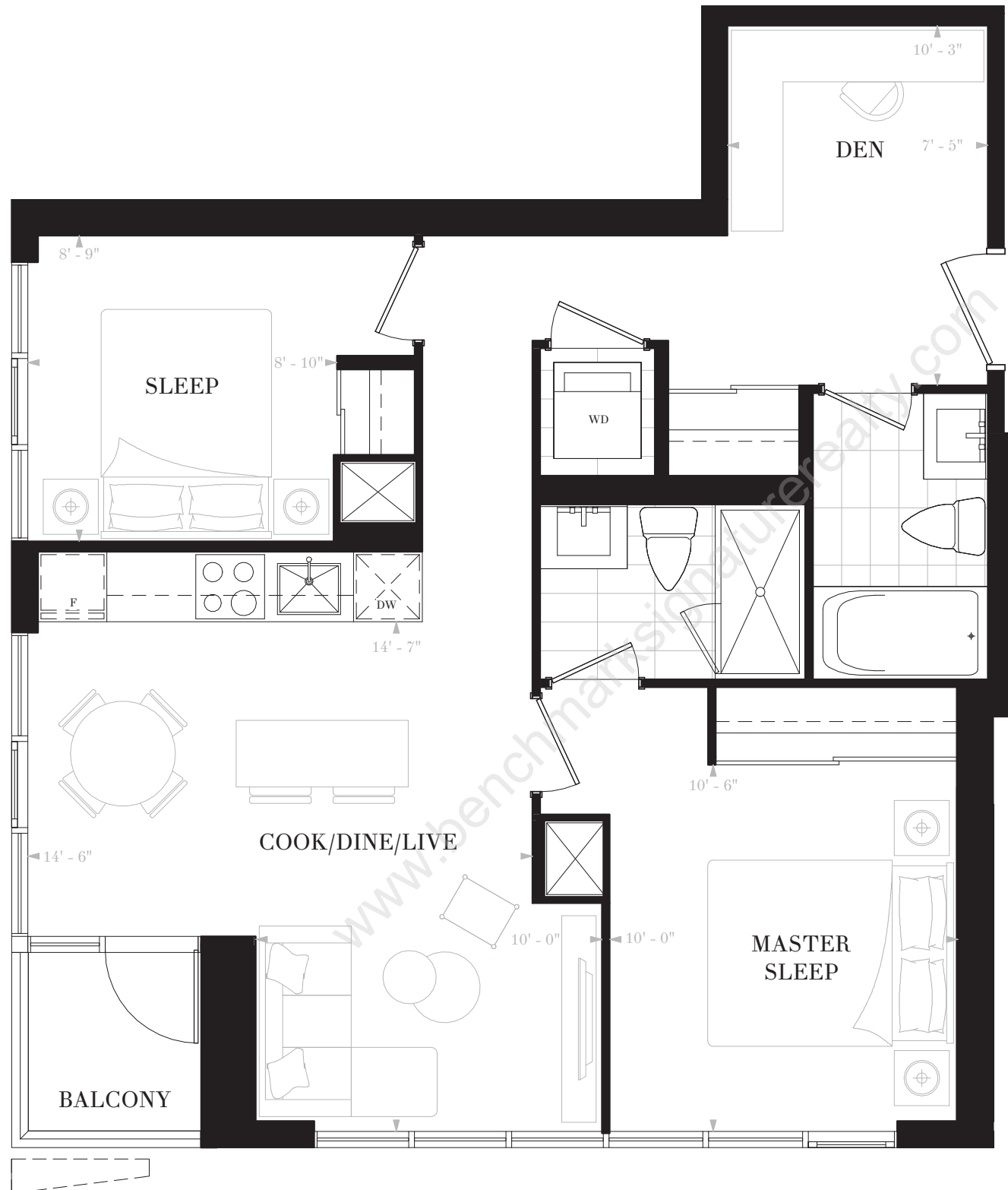
2 BEDROOMS & DEN

2 BATHS

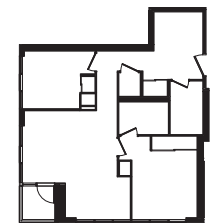
INTERIOR: 776 SF

BALCONY: 28 SF

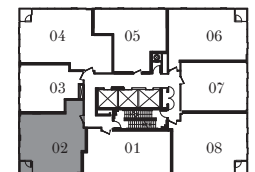
TOTAL: 804 SF



FLOORS 20-21, 24-25



FLOORS 22-23, 26-27



FLOORS 20-27



NOBU

RESIDENCES
TORONTO

SUITE E2H

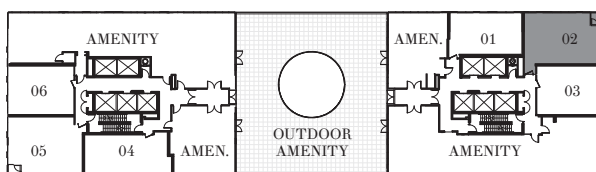
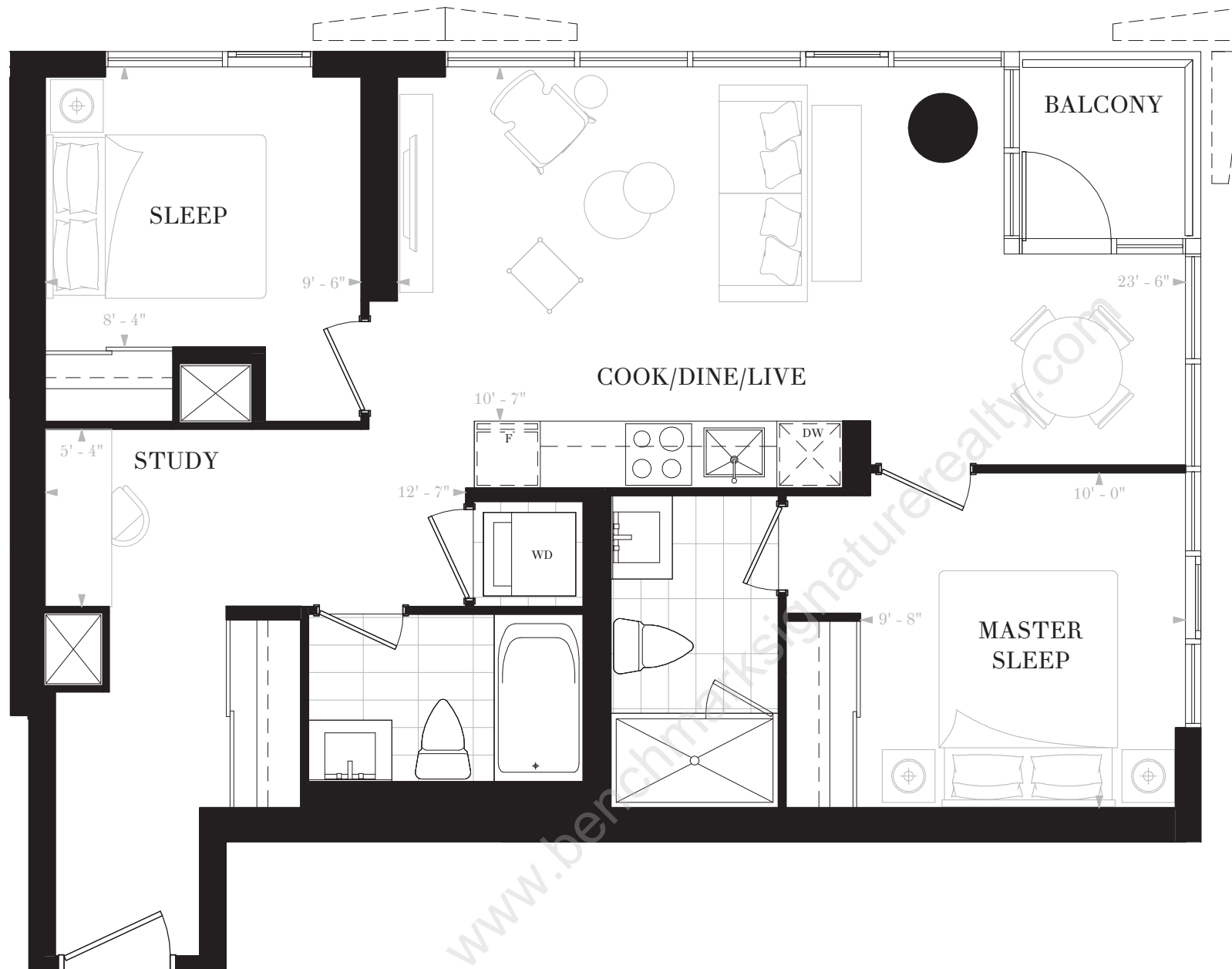
2 BEDROOMS

2 BATHS

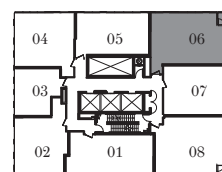
INTERIOR: 799 SF

BALCONY: 28 SF

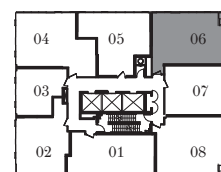
TOTAL: 827 SF



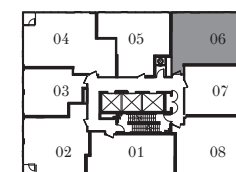
FLOOR 10



FLOORS 11-12



FLOORS 13-19, 28-35



FLOORS 20-27



FLOORS 10-11, 14-15, 18-19,
22-23, 26-27, 30-31, 34-35



FLOORS 12-13, 16-17,
20-21, 24-25, 28-29, 32-33



NOBU

RESIDENCES

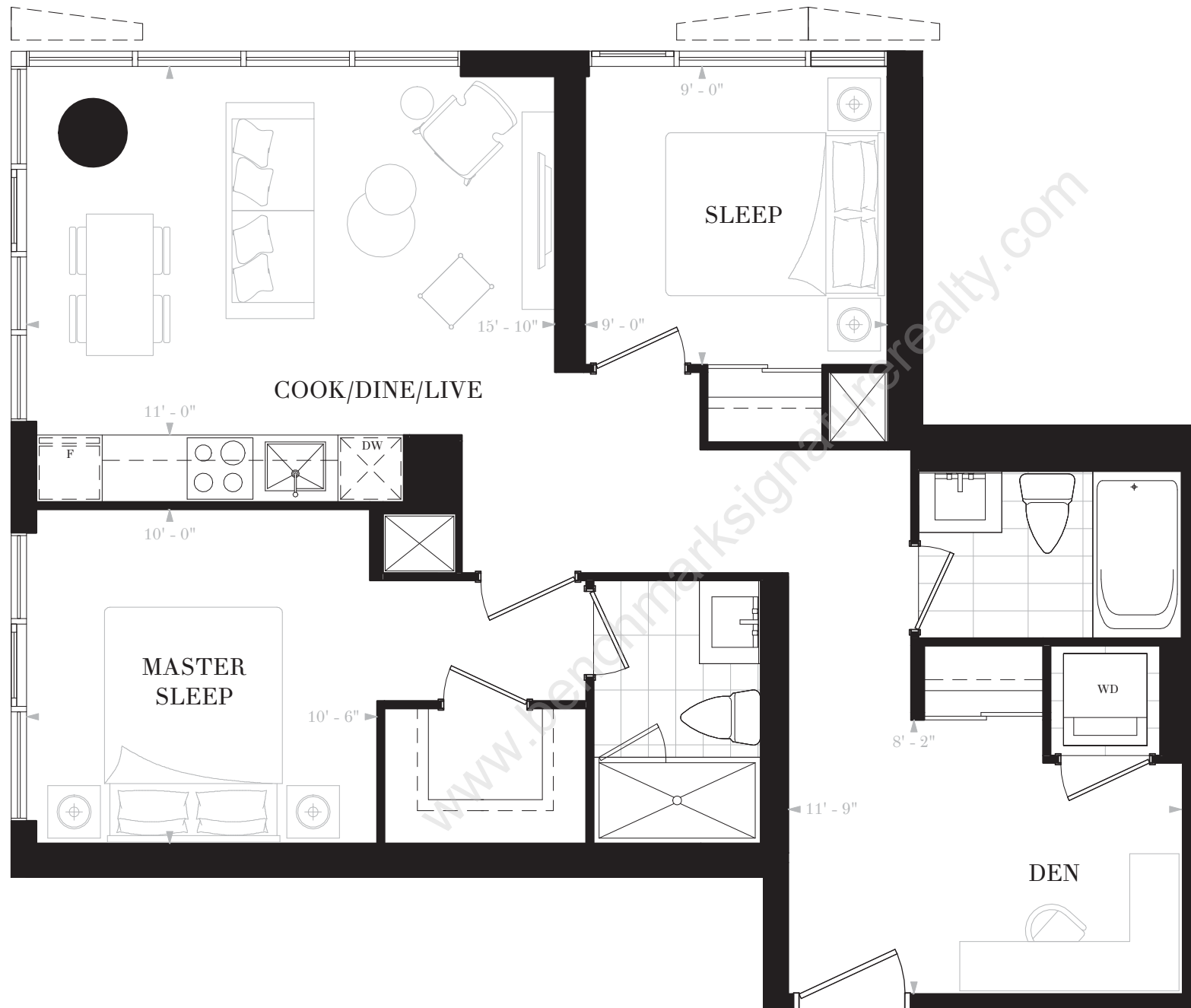
TORONTO

SUITE E2J

2 BEDROOMS & DEN

2 BATHS

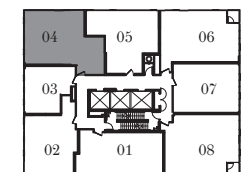
INTERIOR: 814 SF



FLOORS 13, 16-17, 28-29, 32-33



FLOORS 14-15, 18-19, 30-31, 34-35



FLOORS 13-19, 28-35



NOBU

RESIDENCES

TORONTO

SUITE E2K

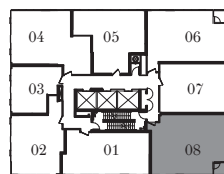
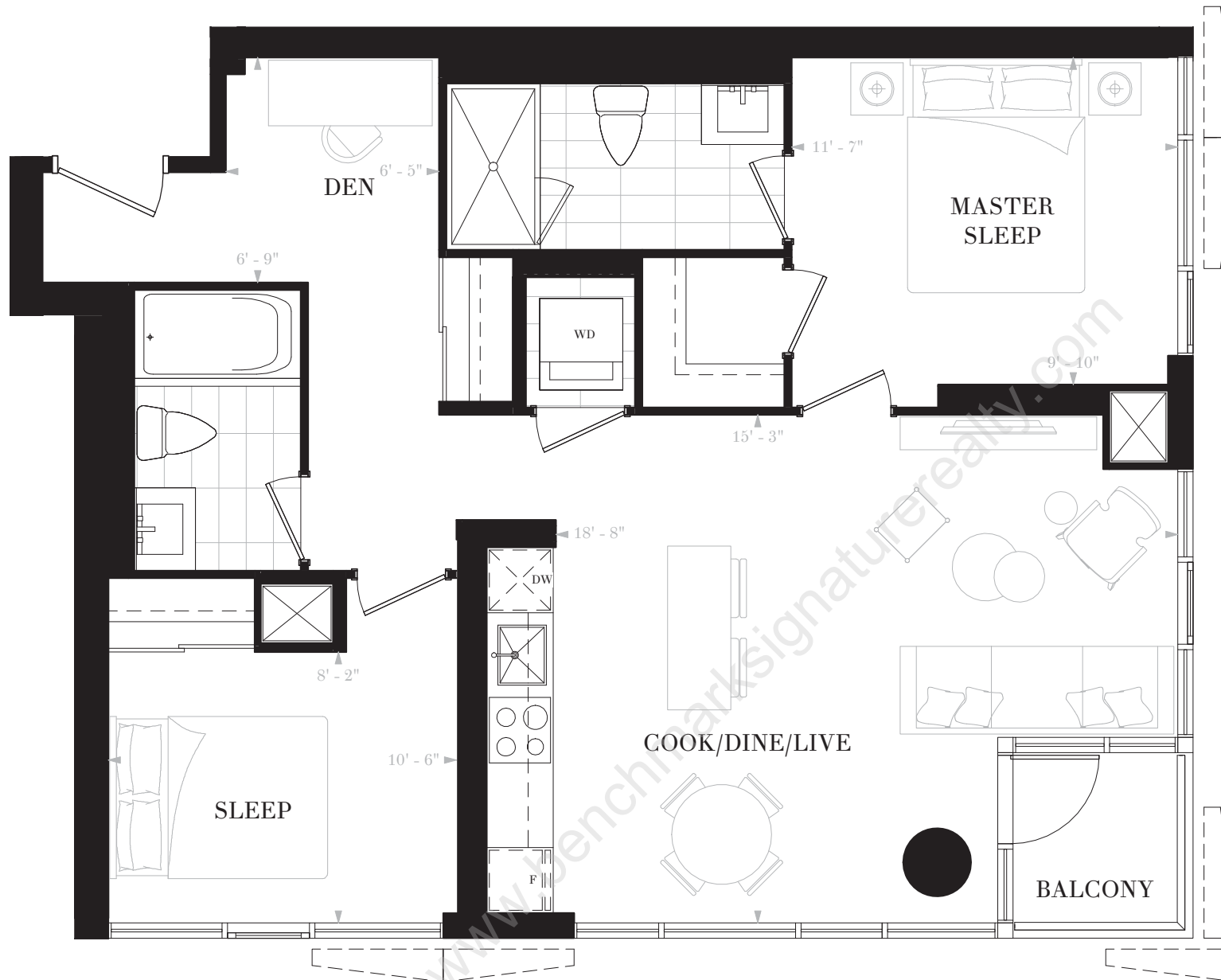
2 BEDROOMS & DEN

2 BATHS

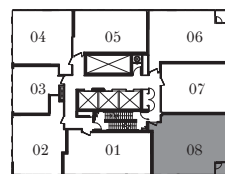
INTERIOR: 862 SF

BALCONY: 28 SF

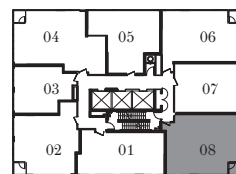
TOTAL: 890 SF



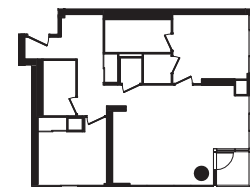
FLOORS 11-12



FLOORS 13-19, 28-35



FLOORS 20-27



FLOORS 11, 14-15, 18-19,
22-23, 26-27, 30-31, 34-35



FLOORS 12-13, 16-17,
20-21, 24-25, 28-29, 32-33



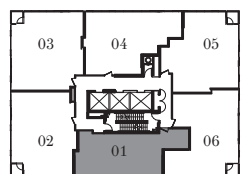
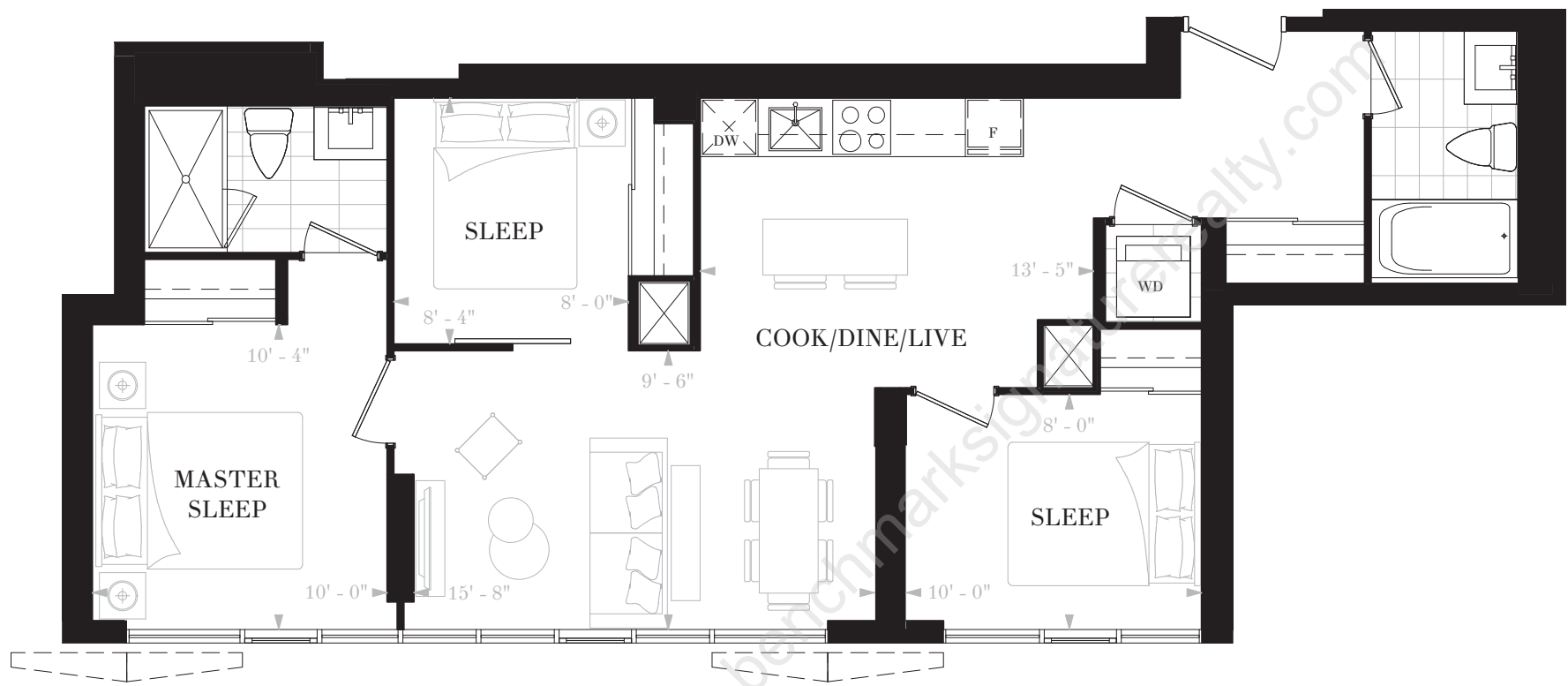
NOBU
RESIDENCES
TORONTO

SUITE E3B

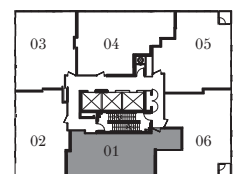
3 BEDROOMS

2 BATHS

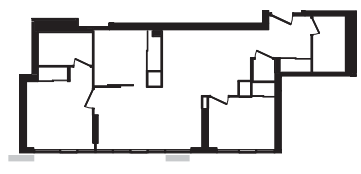
INTERIOR: 864 SF



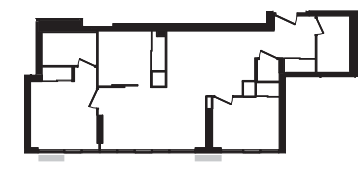
FLOORS 36-41



FLOORS 42-45



FLOORS 36-37, 40-41, 44-45

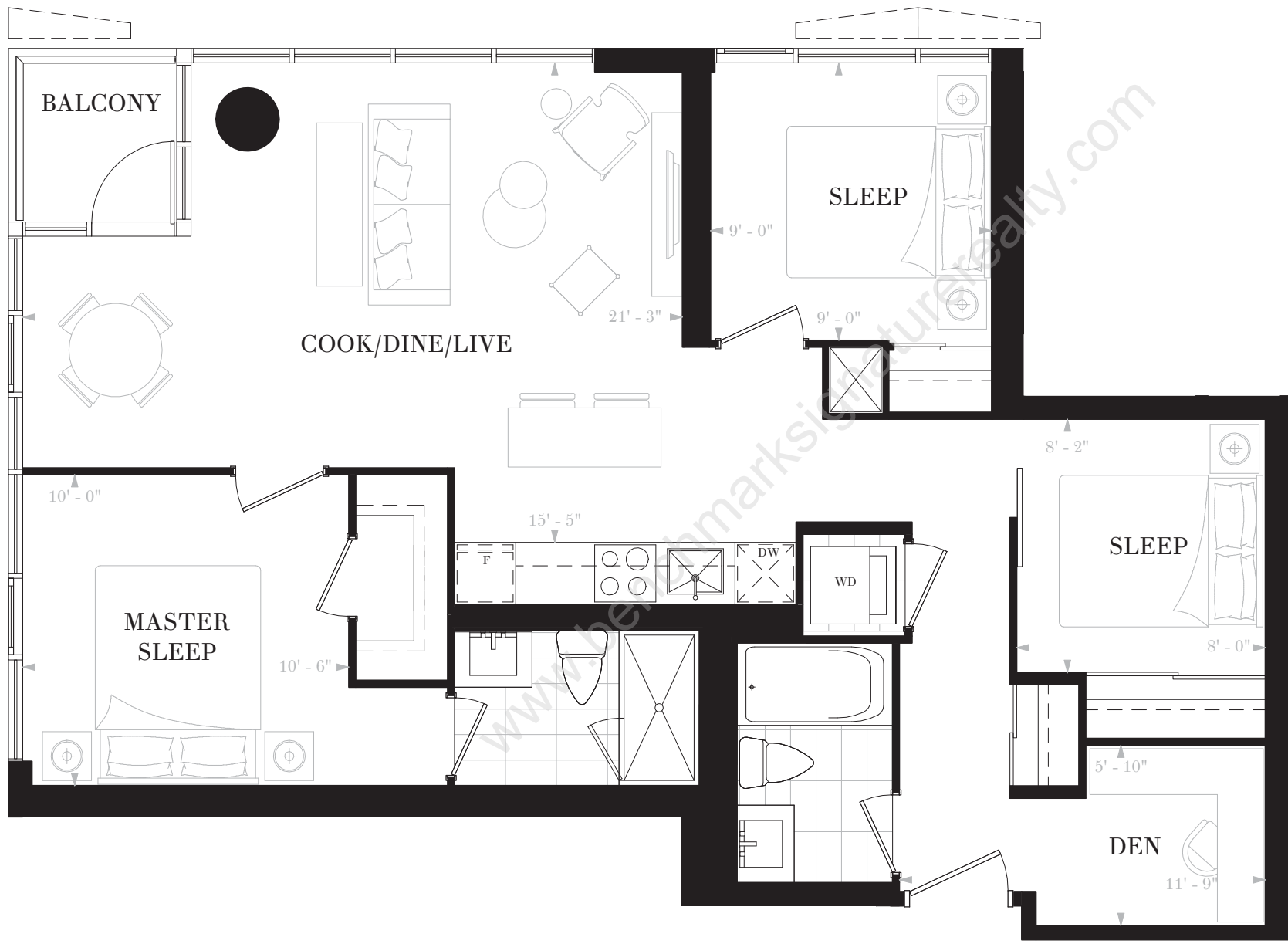


FLOORS 38-39, 42-43

Any stated areas and/or dimensions shown are approximate only and subject to normal construction variances. Actual usable floor space may vary from any stated or depicted floor area. The layout of the suite may be reversed depending on the location of the unit within the project. Any furniture depicted is for illustration purposes only and does not necessarily reflect the electrical plan of the unit. Windows behind the cladding, installed as a design element, may be spandrel or vision glass. The view from or through the windows to the exterior may be partially obstructed by materials affixed to the exterior cladding of the building as part of an overall design element. Any and all sizes and/or specifications are subject to change without notice. All illustrations are artist's concept only. E. & O. E. May 2017



NOBU
RESIDENCES
TORONTO



SUITE E3D

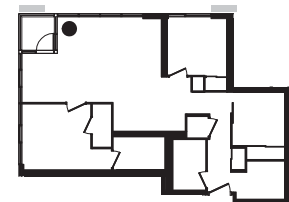
3 BEDROOMS & DEN

2 BATHS

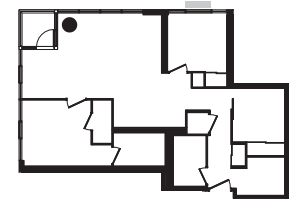
INTERIOR: 929 SF

BALCONY: 28 SF

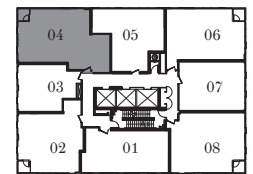
TOTAL: 957 SF



FLOORS 20-21, 24-25



FLOORS 22-23, 26-27



FLOORS 20-27

Any stated areas and/or dimensions shown are approximate only and subject to normal construction variances. Actual usable floor space may vary from any stated or depicted floor area. The layout of the suite may be reversed depending on the location of the unit within the project. Any furniture depicted is for illustration purposes only and does not necessarily reflect the electrical plan of the unit. Windows behind the cladding, installed as a design element, may be spandrel or vision glass. The view from or through the windows to the exterior may be partially obstructed by materials affixed to the exterior cladding of the building as part of an overall design element. Any and all sizes and/or specifications are subject to change without notice. All illustrations are artist's concept only. E. & O. E. May 2017



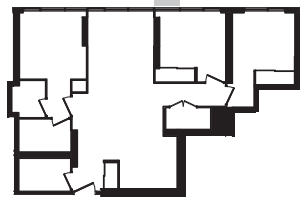
NOBU
RESIDENCES
TORONTO

SUITE E3E

3 BEDROOMS

2 BATHS

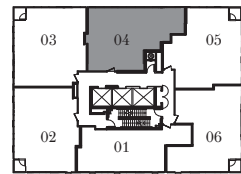
INTERIOR: 1011 SF



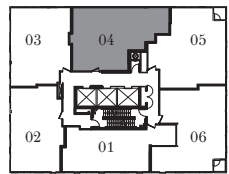
FLOORS 36-37, 40-41, 44-45



FLOORS 38-39, 42-43



FLOORS 36-41



FLOORS 42-45

Any stated areas and/or dimensions shown are approximate only and subject to normal construction variances. Actual usable floor space may vary from any stated or depicted floor area. The layout of the suite may be reversed depending on the location of the unit within the project. Any furniture depicted is for illustration purposes only and does not necessarily reflect the electrical plan of the unit. Windows behind the cladding, installed as a design element, may be spandrel or vision glass. The view from or through the windows to the exterior may be partially obstructed by materials affixed to the exterior cladding of the building as part of an overall design element. Any and all sizes and/or specifications are subject to change without notice. All illustrations are artist's concept only. E. & O. E. May 2017

NOBU

RESIDENCES

TORONTO

SUITE E3F

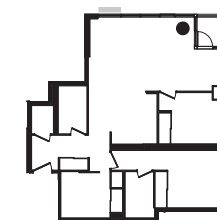
3 BEDROOMS

2 BATHS

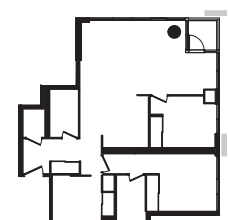
INTERIOR: 1015 SF

BALCONY: 28 SF

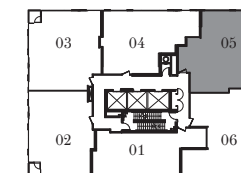
TOTAL: 1043 SF



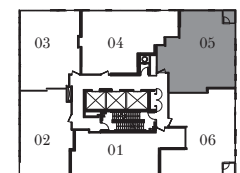
FLOORS 36-37, 40-41, 44-45



FLOORS 38-39, 42-43



FLOORS 36-41



FLOORS 42-45



NOBU

RESIDENCES

TORONTO

SUITE E3G

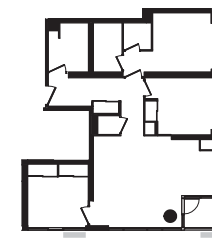
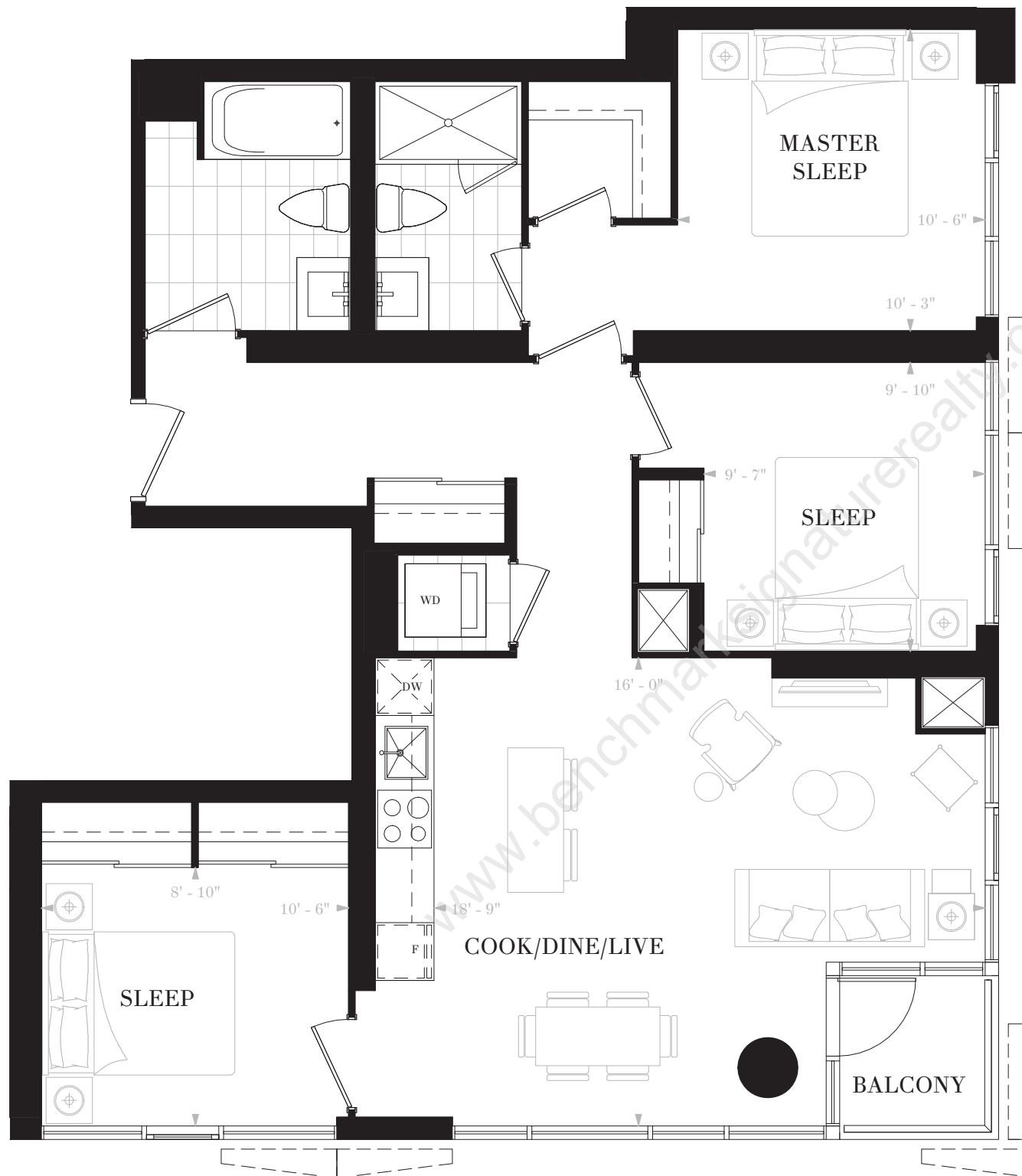
3 BEDROOMS

2 BATHS

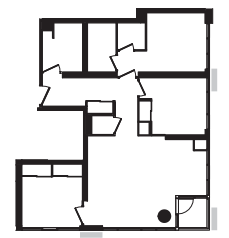
INTERIOR: 1036 SF

BALCONY: 28 SF

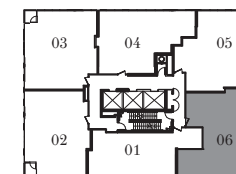
TOTAL: 1064 SF



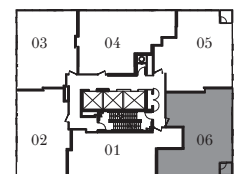
FLOORS 36-37, 40-41, 44-45



FLOORS 38-39, 42-43



FLOORS 36-41



FLOORS 42-45



NOBU

RESIDENCES

TORONTO

SUITE E3H

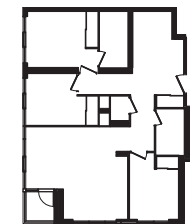
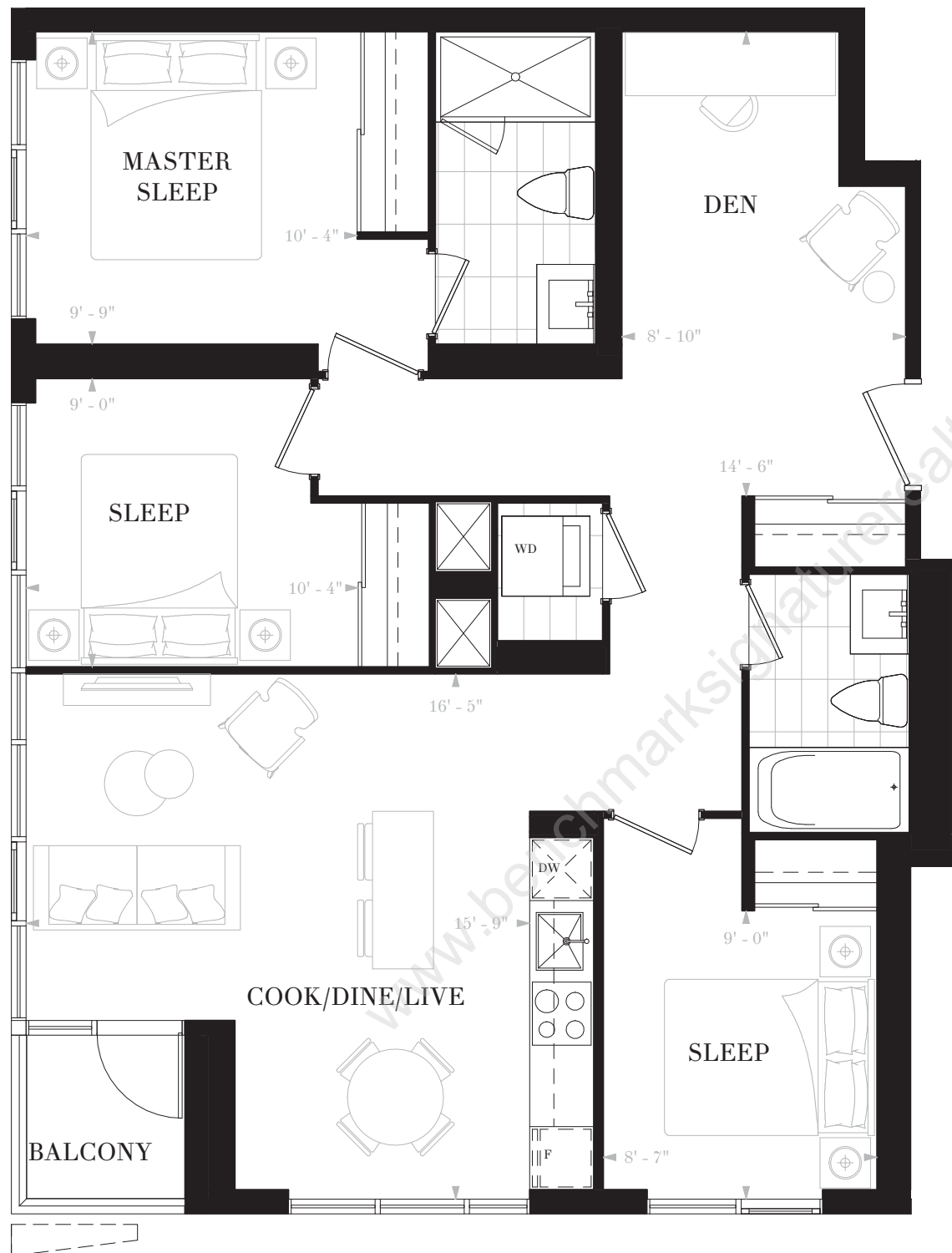
3 BEDROOMS & DEN

2 BATHS

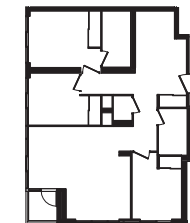
INTERIOR: 1049 SF

BALCONY: 28 SF

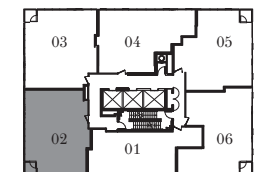
TOTAL: 1077 SF



FLOORS 36-37, 40-41



FLOORS 38-39



FLOORS 36-41



NOBU

RESIDENCES

TORONTO

SUITE E3J

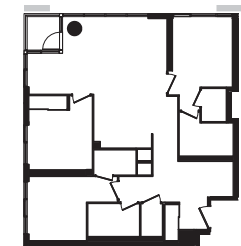
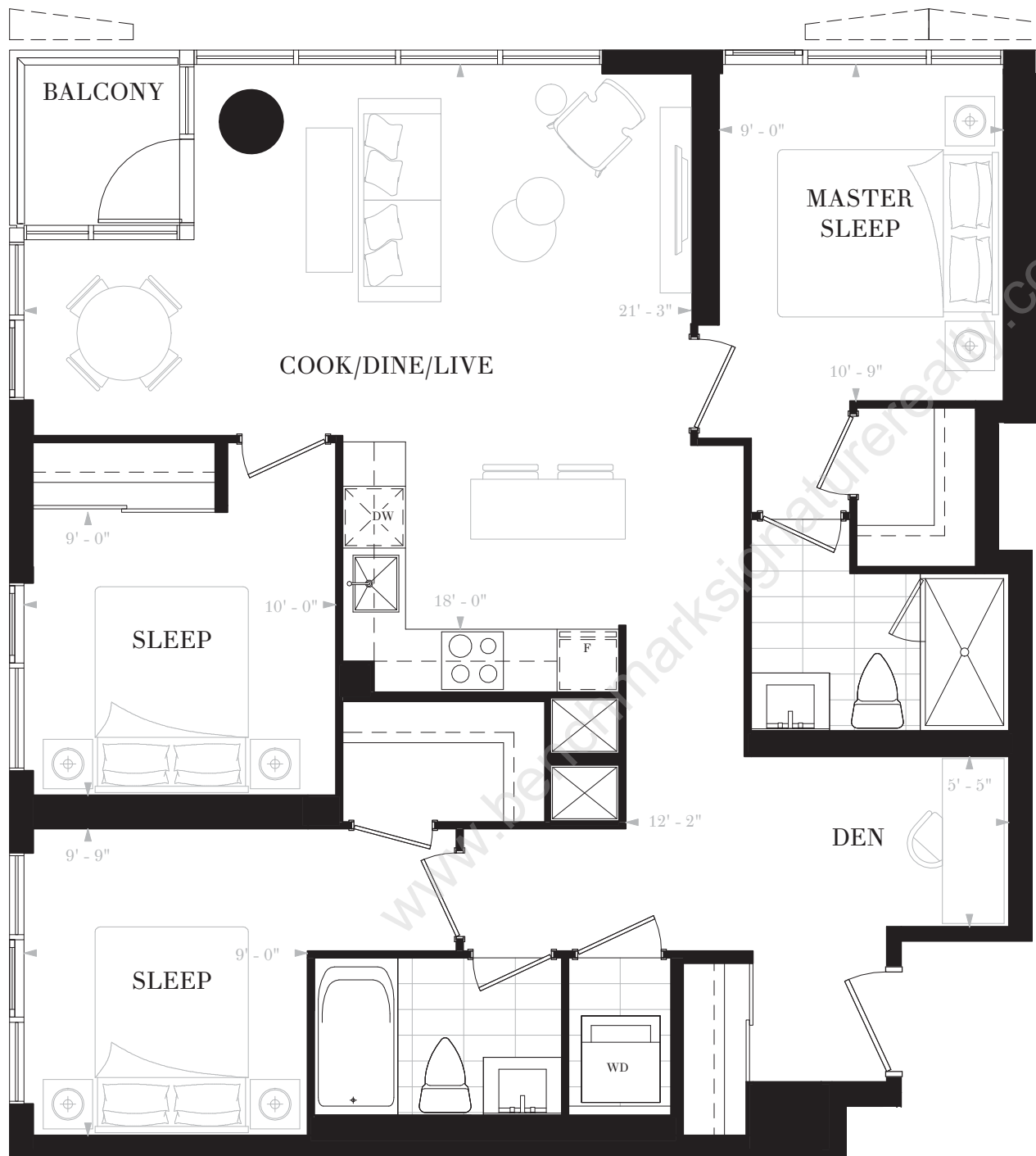
3 BEDROOMS & DEN

2 BATHS

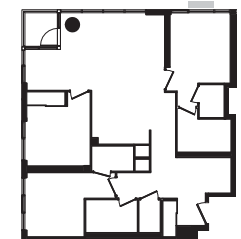
INTERIOR: 1091 SF

BALCONY: 28 SF

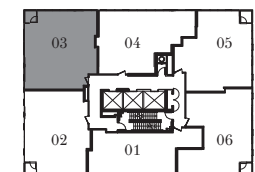
TOTAL: 1119 SF



FLOORS 36-37, 40



FLOORS 38-39



FLOORS 36-40



NOBU

RESIDENCES

TORONTO

SUITE E3K

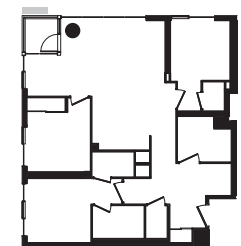
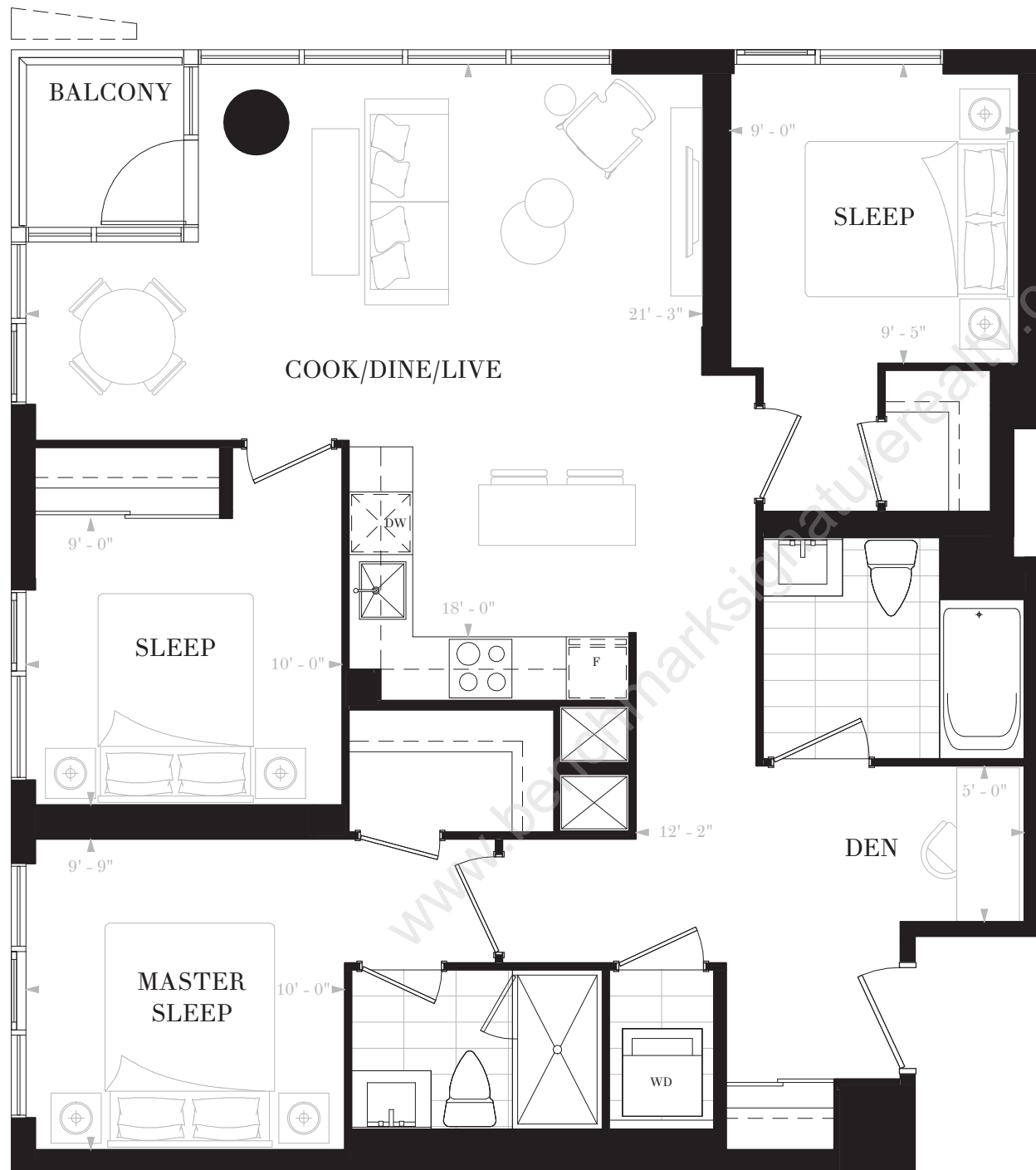
3 BEDROOMS & DEN

2 BATHS

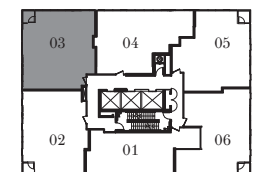
INTERIOR: 1091 SF

BALCONY: 28 SF

TOTAL: 1119 SF



FLOOR 41



FLOOR 41

