

# Folkestone and Hythe Birds

## Tetrad Guide: TR13 L

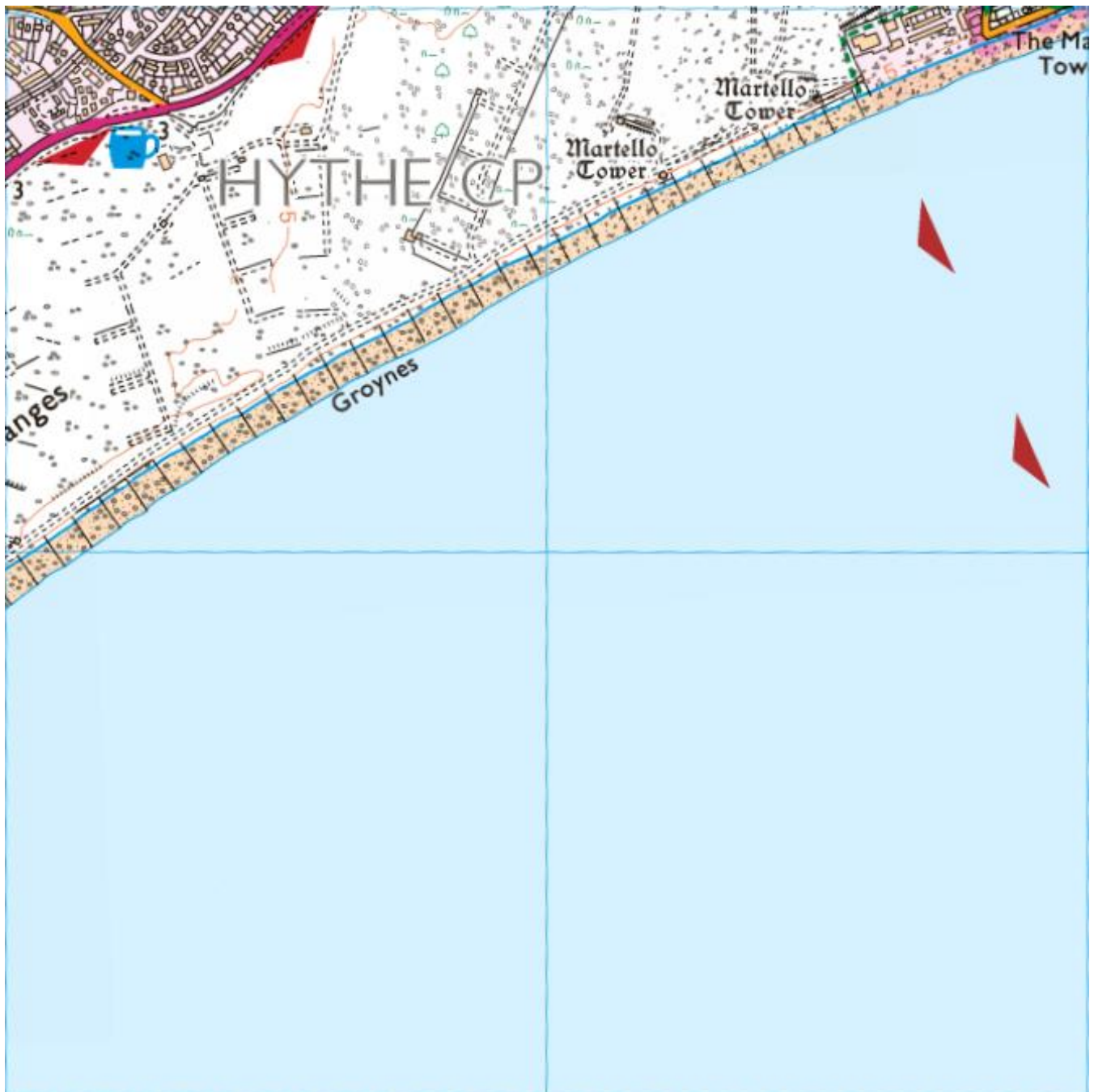
### (Hythe Ranges East and Fisherman's Beach)



#### Introduction

Over half of the tetrad TR13 L is comprised of the English Channel, with most of the land being part of the Hythe Ranges, land which is predominately open shingle with some scattered vegetation, although the village of Palmarsh extends into the north-west corner, whilst some residential and industrial properties of Hythe extend into the north-east corner.

#### Map of TR13 L



## Hythe Ranges

Firth (1984) described how it is believed that in about 600 B.C. with a falling sea level, a bay bar of shingle began to grow outwards from the promontory at Cliff End (at Pett Level, in East Sussex), extending north-eastwards in the direction of Hythe and parallel to the prevailing south-west winds and waves. The source of the shingle for the original bar across Romney Bay is chiefly the flint contained in the chalk cliffs further to the west in Sussex, and to a lesser extent the sandstones of the Hastings series, with possibly also the older sandstones and limestones of the Dorset and south Devon coasts.

The trend of the original bar may be traced clearly today by the direction of the ancient shingle beach remnants extending from the present coastline near the Midrips and Lydd beaches, through the towns of Lydd and New Romney to Hythe Ranges. The seaward (south-western) parts of these beaches have long since been eroded or re-orientated. The shingle deposits cover an area of over 8,000 acres and extend to depths of over 50 ft in parts. They thus constitute easily the largest shingle agglomeration in Britain.

The remnants of shingle beach at Hythe Ranges represent the eastern extremity of the original bar across Romney Bay. Where the beaches have not been disturbed by military training, the usual fan-shaped pattern of laterals is discernible, and the older alluvium-filled hollows support mature vegetation. It is highly probable that the alluvium represents what was once the south side of an arm of the sea extending towards West Hythe. There has been some seaward accretion in the past but since the 13<sup>th</sup> Century and the construction of Dymchurch Wall, erosion has kept pace roughly with accretion.



Looking west along Fisherman's Beach towards Hythe Ranges

## Habitats and birds

There was a Little Tern colony known at the ranges from at least 1909 and apparently moved progressively westward as range activity increased during the twentieth century. It was the terns which attracted Roger Norman's attention in the late 1940s and he watched the site regularly during the 1950s and 1960s, and again from 1990 (although focusing mainly on the section within TR13 G in the earlier years). In the early days Redshank and Lapwing bred, whilst the Little Terns survived until 1968. Ringed Plover and Wheatear also bred and still do so in some years.





Looking east along Fisherman's Beach towards Hythe

Up to ten Nightingales were holding territories in 1958 and still as many as six were present in the 1990s but they are only infrequently recorded today. Turtle Doves also bred until relatively recently, whilst other breeding species may include Red-legged Partridge, Cuckoo, Black Redstart and Stonechat.



Black Redstart at Fisherman's Beach



Red-backed Shrike at Hythe Ranges

The bushes attract migrants in spring and autumn, with sightings having included Garden Warbler, Sedge Warbler, Redstart and Spotted Flycatcher, amongst the commoner species. The seawall and open areas can hold Wheatears and Whinchats, with hirundines, pipits, wagtails, finches and buntings passing overhead. Rarer species seen in recent years have included Wood Lark (in December 2014 and 2017, and October 2022), Hoopoe (in April 2015), Dartford Warbler (in December 2017) and Red-backed Shrike (in September 2022).

The foreshore can be worth checking for waders, gulls and terns, with regular Sanderling and Turnstone, and occasionally Grey Plover, Dunlin, Purple Sandpiper and Whimbrel, whilst Bar-tailed and Black-tailed Godwits have been noted passing offshore. Gulls may include Mediterranean Gull and Little Gull, whilst Arctic Tern, Black Tern and Little Tern have been recorded in recent years.

Whilst access to the Ranges may be restricted, the bay and sea can be viewed Fisherman's Beach at any time. The bay often attracts good numbers of Common Scoters and Great Crested Grebes, sometimes Eider or Velvet Scoter and, mainly during in hard weather, dabbling ducks may seek shelter here. Seawatching may produce Brent Geese, ducks, waders, skuas, terns and auks, and Balearic Shearwater has been recorded. Other oddities have included Bewick's Swan, White-fronted Goose, Goosander, Little Egret, Red Kite, Osprey, Merlin and Hobby.



Red-throated Diver at Hythe Ranges

A list of all 175 species recorded at the site is provided at the end of this guide, though this also includes those species recorded at the parts of the Ranges which lie within TR13 G and TR13 M.

Further history and description of the site, plus a full systematic list, is provided in Roger Norman's [Some observations of birds on Hythe Ranges since 1950](#).

### **Access and parking**

Fisherman's Beach and Hythe Ranges may be accessed from the western end of Hythe, either via the footpath that runs around the Southern Water compound at the western end of Range Road or along the beach from the western end of West Parade. There is free parking on Range Road, St. Leonard's Road or West Parade (the seafront). It is not possible to proceed westwards beyond Fisherman's Beach if firing practice is taking place. This will be indicated by the flying of prominent red flags, supplemented by red lights during night-time firing. The planned firing times are available at: [www.gov.uk/government/publications/south-east-training-estate-firing-times](http://www.gov.uk/government/publications/south-east-training-estate-firing-times) (scroll down for "Hythe Range firing times") and are also displayed on a board at the end of the seawall.



When firing is not taking place, it is possible to follow the shoreline westwards to the Dymchurch Redoubt (in TR13 G) but egress at this end is difficult. Access to the ranges themselves remains forbidden, except for by prior arrangement with the Ministry of Defence. Photography is not permitted here.

### Bird species diversity

The rather sparse habitat supported a total of 46 breeding and 71 wintering species recorded in the 2007-2013 BTO/KOS atlas fieldwork, which ranked at 19<sup>th</sup> and 17<sup>th</sup> respectively amongst the 31 local tetrads as the table below demonstrates. Overall though the tetrad has produced a total of 147 species, which ranks as the 13<sup>th</sup> richest in diversity.

	Total	Rank/31
Breeding species	46	19 <sup>th</sup>
Wintering species	71	17 <sup>th</sup>
Species recorded	147	13 <sup>th</sup>

The full list of species that have been recorded is provided as Appendix 1.

### Other Natural History

Vegetated coastal shingle is one of the scarcest habitats in Britain and sites with this characteristic consequently tend to be of great importance for invertebrate conservation. The significance of the Dungeness peninsula is well documented (e.g. Natural England 2014) but Hythe Ranges (which also occupies parts of TR13 G and TR13 M) has not been well studied due to access restrictions. It is considered “likely to support an impressive fauna” and a number of rare or scarce species are known or suspected to occur (Davidson 1998).

Recent moth trapping at Hythe Ranges (in TR13 L) has revealed the presence of several nationally rare or scarce species, some of which were only previously thought to occur at Dungeness or a small number of other sites. Of particular significance is the Sussex Emerald, a highly localised species otherwise known mainly from Dungeness, with a small population at Kingsdown and another very recently discovered at Rye Harbour (East Sussex), which at the ranges feeds on Wild Carrot along the seawall. Annual trapping at the ranges since 2017 has indicated that the population may be of comparable size to the colonies at Dungeness, with counts as follows:

Date	13 <sup>th</sup> July 2017	13 <sup>th</sup> July 2018	9 <sup>th</sup> July 2019	16 <sup>th</sup> July 2020	19 <sup>th</sup> July 2021	11 <sup>th</sup> July 2022
Number	45	65	70	75	44	61

The micro moth *Coleophora galbulipennella* (Kent Case-bearer), which feeds on Nottingham Catchfly and had only previously been known from Dungeness, has also now been found on the ranges. The same food plant also supports the White Spot, which was thought from old records to be established at the ranges but has not been captured there in recent years (although there have been occasional records from the neighbouring tetrad TR13 M). Another moth otherwise only known to breed at Dungeness is the *pallifrons* form of Pigmy Footman.

Other coastal specialties that have been recorded in the tetrad include *Tinagma ocherostomella* (Bugloss Spear-wing), *Ethmia terminella* (Five-spot Ermel), *Aristotelia brizella* (Thrift Neb), *Monochroa palustrellus* (Wainscot Neb), *Neofriseria peliella* (White-spot Groundling), *Caryocolum alsinella* (Narrow Groundling), *Caryocolum vicinella* (Coast Groundling), *Coleophora pennella* (Bugloss Case-bearer), *Aethes williana* (Silver Carrot Conch), *Aethes dilucidana* (Short-barred Yellow Conch), *Lobesia littoralis* (Shore Marble), *Cynaeda dentalis* (Starry Pearl), *Anerastia lotella* (Sandhill Knot-horn), *Platytes cerussella* (Little Grass-veneer), *Pseudoterpna pruinata* (Grass Emerald), *Aporophyla australis* (Feathered Brindle) and *Agrotis ripae* (Sand Dart).

A number of rare migrants or wanderers have been trapped at Hythe Ranges, including *Tebenna micalis* (Vagrant Twitcher), Netted Pug, Oak Processionary, Dusky Hook-tip, Buttoned Snout, the Four-spotted and Pale-shouldered Cloud, whilst Death's-head Hawk-moth and Crimson Speckled have been found by day at Fisherman's Beach.



Sussex Emerald adult at Hythe Ranges



Sussex Emerald larva on Wild Carrot at Hythe Ranges



*Coleophora galbulipennella* at Hythe Ranges



*Cynaeda dentalis* at Hythe Ranges



Netted Pug at Hythe Ranges



Buttomed Snout at Hythe Ranges

The Clouded Yellow butterfly may frequently be encountered along the seawall.





The Four-spotted at Hythe Ranges



Pale-shouldered Cloud at Hythe Ranges



Dusky Hook-tip at Hythe Ranges



Crimson Speckled at Fisherman's Beach

The heteropteran bug *Aphanus rolandi* was found at Fisherman's Beach during an ecological survey of the site in 2010. This species is categorised as nationally notable, and which is also found at Dungeness and only in seven 10km squares in the UK.

The ranges support a diverse and specialised flora that includes the nationally scarce Sea Pea, Sea Kale, Nottingham Catchfly and Yellow Horned-poppy, and a rich variety of lichens.

A list of all species recorded in the tetrad is provided below in Appendix 2.

### General History

The tetrad contains three Martello Towers, built as defence from the impending threat of invasion from Napoleonic France in the early nineteenth century. The towers are numbered 13 to 15 of the 74 which were built (and are listed sequentially) along the coastline between Folkestone (1) and Seaford, Sussex (74). Number 13 was converted into a private residence in 1928 (though was requisitioned as an observation post during World War II). For further information on these and other local Martello towers see: [www.ecastles.co.uk/martello.html](http://www.ecastles.co.uk/martello.html).

The military ranges have been in existence since the early nineteenth century and were acquired shortly after the Martello Towers were built.





Martello Tower 14



Martello Tower 15

The two former lifeboat stations located in the tetrad were designated in 2010 as grade II listed buildings.

The northern lifeboat station was built in 1893 after the closure of the lifeboat house in Seabrook, with the existing lifeboat (the 'Meyer de Rothschild') moved to the new premises. The station was constructed of polychrome brickwork with a slate roof and a decorated end gable. Three successive lifeboats were also named 'Meyer de Rothschild', after the donor (as was customary), before in 1929 the 'City of Nottingham' came into service, a gift from Nottingham Lifeboat Fund.

In 1934 a new larger lifeboat called 'The Viscountess Wakefield' was donated by Viscount Wakefield, who lived in Hythe but unfortunately the new lifeboat was too large for the existing lifeboat house, so a new lifeboat house was constructed immediately to the south-east in 1934. The new lifeboat station had a pre-fabricated steel frame, clad in corrugated iron and a barrel-shaped roof, and was probably supplied by the firm of Lewis and Lewis of Haywards Heath.

In 1940 the lifeboat was beached during the evacuation of Dunkirk, so becoming the only lifeboat to be lost during Operation Dynamo.



New lifeboat station, built 1934

During the Second World War the upper floor of the new lifeboat station was used for spotting doodlebugs (which is presumably when the original casement window of the seaward gable end was replaced by an oriel window). Also during the war, a mine-watching post (a yellow brick addition with flat concrete roof) was built on the landward side of the old station, as Hythe beach was mined to prevent an enemy landing.

After the War the lifeboat was not replaced. The old lifeboat house was used for storage by the local scouts and the new one put to various uses, including use as a studio, a boathouse and clubhouse for a diving group, and is currently occupied by the Lazy Shack Food Company. The former lifeboat stations were designated due to their architectural interest, intactness, rarity of type and historic interest – they are probably the only surviving buildings in Hythe, one of the original Cinque Ports, which demonstrate a maritime activity.



## References

Castles and Fortifications of England and Wales no date. [www.ecastles.co.uk/martello.html](http://www.ecastles.co.uk/martello.html)

Davidson, N.C. 1998. Chapter 4.1 Estuaries. In: Coasts and seas of the United Kingdom. Region 7 South-east England: Lowestoft to Dungeness, ed. by J.H. Barne, C.F. Robson, S.S. Kaznowska, J.P. Doody, N.C. Davidson & A.L. Buck, 67-72. Peterborough, Joint Nature Conservation Committee.

Firth, F. M. 1984. The Natural History of Romney Marsh. Meresborough Books.

Historic England no date. Hythe Lifeboat Stations, Range Road. <https://historicengland.org.uk/listing/the-list/list-entry/1394324?section=official-list-entry>

Natural England 2014. Ramsar Convention on Wetlands of International Importance Especially as Waterfowl Habitat. [https://assets.publishing.service.gov.uk/government/uploads/system/uploads/attachment\\_data/file/509228/dungeness-romney-rye-ramsar-documents.pdf](https://assets.publishing.service.gov.uk/government/uploads/system/uploads/attachment_data/file/509228/dungeness-romney-rye-ramsar-documents.pdf)

Newcombe, M. 2013. Ecological Survey of Fisherman's Beach, Hythe. [www.rpclandandnewhomes.co.uk/wp-content/uploads/2013/03/fb-ecological-survey.pdf](http://www.rpclandandnewhomes.co.uk/wp-content/uploads/2013/03/fb-ecological-survey.pdf)

Norman, R. K. 2006. Some observations of birds on Hythe Ranges since 1950. <https://folkestonebirds.com/where-to-watch> (see "Further Information" section).

## Acknowledgements

The map image was produced from the Ordnance Survey [Get-a-map service](#) and is reproduced with kind permission of [Ordnance Survey](#).

The photograph of Red-backed Shrike was taken by Sean McMinn, the *Coleophora galbulipennella*, *Cynaeda dentalis*, the Four-spotted, Pale-shouldered Cloud and Dusky Hook-tip by Rob Lee and all others by Ian Roberts.

Lists of the other fauna and flora which have been recorded in the tetrad were kindly provided by the Kent and Medway Biological Records Centre ([www.kmbrc.org.uk](http://www.kmbrc.org.uk)).

## Appendix 1: Species Lists – Birds: 147 species

- Recorded in winter survey 2007-2012
- Recorded in breeding survey 2008-2013 – Confirmed breeding
- Recorded in breeding survey 2008-2013 – Probable breeding
- Recorded in breeding survey 2008-2013 – Possible breeding
- Recorded in breeding survey as a non-breeder or recorded outside of survey period
- ★ Rare migrant or vagrant (less than 50 area records)

TR13 L - Bird List	Breeding	Wintering	Other
Red-legged Partridge	<span style="color: red;">●</span>	<span style="color: blue;">●</span>	
Pheasant	<span style="color: red;">●</span>	<span style="color: blue;">●</span>	
Brent Goose		<span style="color: blue;">●</span>	
Greylag Goose			<span style="color: green;">●</span>
★ White-fronted Goose			<span style="color: green;">●</span>
Mute Swan		<span style="color: blue;">●</span>	
★ Bewick's Swan			<span style="color: green;">●</span>
★ Egyptian Goose			<span style="color: green;">●</span>
Shelduck		<span style="color: blue;">●</span>	
Gadwall		<span style="color: blue;">●</span>	
Wigeon		<span style="color: blue;">●</span>	
Mallard	<span style="color: red;">●</span>	<span style="color: blue;">●</span>	
Pintail		<span style="color: blue;">●</span>	
Teal		<span style="color: blue;">●</span>	
Pochard		<span style="color: blue;">●</span>	
Tufted Duck		<span style="color: blue;">●</span>	
Eider		<span style="color: blue;">●</span>	
Velvet Scoter			<span style="color: green;">●</span>
Common Scoter		<span style="color: blue;">●</span>	
Goosander		<span style="color: blue;">●</span>	
Red-breasted Merganser			<span style="color: green;">●</span>
Swift			<span style="color: green;">●</span>
Cuckoo	<span style="color: red;">●</span>		
Feral Pigeon	<span style="color: red;">●</span>	<span style="color: blue;">●</span>	
Stock Dove	<span style="color: red;">●</span>		
Woodpigeon	<span style="color: red;">●</span>	<span style="color: blue;">●</span>	
Turtle Dove	<span style="color: red;">●</span>		
Collared Dove	<span style="color: red;">●</span>	<span style="color: blue;">●</span>	
Moorhen			<span style="color: green;">●</span>
Great Crested Grebe		<span style="color: blue;">●</span>	
Oystercatcher	<span style="color: red;">●</span>	<span style="color: blue;">●</span>	
Avocet			<span style="color: green;">●</span>
Lapwing		<span style="color: blue;">●</span>	
Golden Plover			<span style="color: green;">●</span>
Grey Plover			<span style="color: green;">●</span>
Ringed Plover	<span style="color: red;">●</span>		
Whimbrel			<span style="color: green;">●</span>
Curlew		<span style="color: blue;">●</span>	
Bar-tailed Godwit			<span style="color: green;">●</span>
★ Black-tailed Godwit			<span style="color: green;">●</span>
Turnstone		<span style="color: blue;">●</span>	

TR13 L - Bird List	Breeding	Wintering	Other
Osprey			<span style="color: green;">●</span>
Sparrowhawk		<span style="color: blue;">●</span>	
Red Kite			<span style="color: green;">●</span>
Buzzard			<span style="color: green;">●</span>
★ Hoopoe			<span style="color: green;">●</span>
Kingfisher			<span style="color: green;">●</span>
Great Spotted Woodpecker			<span style="color: green;">●</span>
Green Woodpecker	<span style="color: red;">●</span>		
Kestrel	<span style="color: red;">●</span>	<span style="color: blue;">●</span>	
Merlin		<span style="color: blue;">●</span>	
Hobby			<span style="color: green;">●</span>
Peregrine			<span style="color: green;">●</span>
★ Red-backed Shrike	<span style="color: red;">●</span>	<span style="color: blue;">●</span>	
Jay	<span style="color: red;">●</span>	<span style="color: blue;">●</span>	
Magpie	<span style="color: red;">●</span>	<span style="color: blue;">●</span>	
Jackdaw	<span style="color: red;">●</span>	<span style="color: blue;">●</span>	
Rook		<span style="color: blue;">●</span>	
Carrion Crow	<span style="color: red;">●</span>	<span style="color: blue;">●</span>	
Raven			<span style="color: green;">●</span>
Coal Tit			<span style="color: green;">●</span>
Blue Tit	<span style="color: red;">●</span>	<span style="color: blue;">●</span>	
Great Tit	<span style="color: red;">●</span>	<span style="color: blue;">●</span>	
★ Woodlark			<span style="color: green;">●</span>
Skylark	<span style="color: red;">●</span>	<span style="color: blue;">●</span>	
Sand Martin			<span style="color: green;">●</span>
Swallow	<span style="color: red;">●</span>		
House Martin			<span style="color: green;">●</span>
Long-tailed Tit	<span style="color: red;">●</span>		
Willow Warbler			<span style="color: green;">●</span>
Chiffchaff	<span style="color: red;">●</span>		
Sedge Warbler			<span style="color: green;">●</span>
Blackcap	<span style="color: red;">●</span>		
Garden Warbler			<span style="color: green;">●</span>
Lesser Whitethroat	<span style="color: red;">●</span>		
Whitethroat	<span style="color: red;">●</span>		
★ Dartford Warbler			<span style="color: green;">●</span>
Firecrest			<span style="color: green;">●</span>
Goldcrest			<span style="color: green;">●</span>
Wren	<span style="color: red;">●</span>	<span style="color: blue;">●</span>	
Starling	<span style="color: red;">●</span>	<span style="color: blue;">●</span>	
Blackbird	<span style="color: red;">●</span>	<span style="color: blue;">●</span>	



TR13 L - Bird List	Breeding	Wintering	Other
Knot			●
Sanderling			●
Dunlin		●	
Purple Sandpiper			●
Woodcock			●
Snipe		●	
Common Sandpiper			●
Redshank		●	
Kittiwake		●	
Black-headed Gull		●	
Little Gull		●	
Mediterranean Gull		●	
Common Gull		●	
Great Black-backed Gull		●	
Herring Gull	●	●	
Lesser Black-backed Gull		●	
Sandwich Tern			●
Little Tern			●
Common Tern			●
Arctic Tern			●
Black Tern			●
Great Skua			●
Arctic Skua			●
Guillemot		●	
Razorbill		●	
Red-throated Diver		●	
Black-throated Diver			●
★ Great Northern Diver			●
Fulmar		●	
Manx Shearwater			●
★ Balearic Shearwater		●	
Gannet		●	
Cormorant		●	
Grey Heron			●
Little Egret		●	

TR13 L - Bird List	Breeding	Wintering	Other
Fieldfare			●
Redwing			●
Song Thrush	●	●	
Mistle Thrush	●		
Spotted Flycatcher			●
Robin	●	●	
Nightingale			●
Black Redstart	●	●	
Redstart			●
Whinchat			●
Stonechat	●		
Wheatear	●		
House Sparrow	●	●	
Tree Sparrow			●
Dunnock	●	●	
Yellow Wagtail			●
Grey Wagtail			●
Pied Wagtail	●	●	
Meadow Pipit	●	●	
Rock Pipit		●	
Chaffinch	●	●	
Bullfinch	●	●	
Greenfinch	●	●	
Linnet	●	●	
Lesser Redpoll			●
Goldfinch	●	●	
Siskin		●	
Snow Bunting		●	
Yellowhammer			●
Reed Bunting	●		
Total	46	71	
Confirmed breeding	15		
Probable breeding	18		
Possible breeding	13		
Total species recorded in tetrad			147

## Appendix 2: Species Lists – Other Natural History



Information on other natural history has been kindly provided by the Kent and Medway Biological Records Centre ([www.kmbrc.org.uk](http://www.kmbrc.org.uk)), with particular thanks to Tony Witts. A few additional records from other sources are also included in particular an ecological survey of Fisherman's Beach undertaken by Martin Newcombe in 2010 and subsequent Lepidoptera recording, primarily undertaken by Ian Roberts.

### **Cnidaria (Jellyfishes, Sea Anemones etc.): 2 species**

Common name	Scientific name	Last recorded
Common Jellyfish	<i>Aurelia aurita</i>	2018
Compass Jellyfish	<i>Chrysaora hysoscella</i>	2018

### **Chondrichthyes (Cartilaginous fish): 3 species**

Common name	Scientific name	Last recorded
Thornback Ray	<i>Raja clavata</i>	2016
Spotted Ray	<i>Raja montagui</i>	2016
Lesser Spotted Dogfish	<i>Scyliorhinus canicula</i>	2016

### **Reptilia (Reptiles): 3 species**

Common name	Scientific name	Last recorded
Grass Snake	<i>Natrix natrix</i>	2001
Slow-worm	<i>Anguis fragilis</i>	2010
Common Lizard	<i>Zootoca vivipara</i>	2010

### **Mammalia (Mammals): 9 species**

Common name	Scientific name	Last recorded
Eurasian Badger	<i>Meles meles</i>	2010
Stoat	<i>Mustela erminea</i>	2001
Weasel	<i>Mustela nivalis</i>	2001
Rabbit	<i>Oryctolagus cuniculus</i>	2016
Common Pippistrelle	<i>Pipistrellus pipistrellus</i>	2010
Brown Rat	<i>Rattus norvegicus</i>	2010
Fox	<i>Vulpes vulpes</i>	2021
Grey Seal	<i>Halichoerus grypus</i>	2016
Harbour Porpoise	<i>Phocoena phocoena</i>	2017

### **Chilopoda (Centipedes): 1 species**

Common name	Scientific name	Last recorded
Brown Centipede	<i>Lithobius forficatus</i>	2010

### **Crustacea (Crustaceans): 8 species**

Common name	Scientific name	Last recorded
Common Pill Woodlouse	<i>Armadillidium vulgare</i>	2010
Masked crab	<i>Corystes cassivelaunus</i>	1993
-	<i>Elimnius modestus</i>	1993
Common Woodlouse	<i>Oniscus asellus</i>	2010
Common Striped Woodlouse	<i>Philoscia muscorum</i>	2010
Common Rough Woodlouse	<i>Porcellio scaber</i>	2010



Common name	Scientific name	Last recorded
Acorn Barnacle	<i>Semibalanus balanoides</i>	1993
Common Pygmy Woodlouse	<i>Trichoniscus pusillus</i>	2010

#### **Orthoptera (Grasshoppers and Crickets): 4 species**

Common name	Scientific name	Last recorded
Common Field Grasshopper	<i>Chorthippus brunneus</i>	2000
Meadow Grasshopper	<i>Chorthippus parallelus</i>	2010
Speckled Bush-cricket	<i>Leptophyes punctatissima</i>	2010
Dark Bush-cricket	<i>Pholidoptera griseoaptera</i>	2010

#### **Dermaptera (Earwigs): 1 species**

Common name	Scientific name	Last recorded
Common Earwig	<i>Forficula auricularia</i>	2006

#### **Hemiptera (True Bugs): 28 species**

Common name	Scientific name	Last recorded
Common Flower Bug	<i>Anthocoris nemorum</i>	2010
-	<i>Aphanus rolandri</i>	2010
-	<i>Berytinus minor</i>	2010
Potato Capsid	<i>Closterotomus norwegicus</i>	2010
-	<i>Charagochilus gyllenhalii</i>	2010
Dock Bug	<i>Coreus marginatus</i>	2010
Mirid Bug	<i>Deraeocoris ruber</i>	2010
-	<i>Dicyphus errans</i>	2010
Woundwort Shieldbug	<i>Eysarcoris venustissimus</i>	2010
-	<i>Heterotoma merioptera</i>	2010
Common Nettle Bug	<i>Liocoris tripustulatus</i>	2010
Common Green Capsid	<i>Lygocoris pabulinus</i>	2010
Tarnished Plant Bug	<i>Lygus rugulipennis</i>	2010
Field Damsel Bug	<i>Nabis ferus</i>	2010
Common Damsel Bug	<i>Nabis regosus</i>	2010
Grass Bug	<i>Notostira elongata</i>	2010
-	<i>Orius majusculus</i>	2010
-	<i>Orius minutus</i>	2010
-	<i>Orius niger</i>	2010
Forest Bug	<i>Pentatoma rufipes</i>	2010
Beet Leaf Bug	<i>Piesma quadratum</i>	2010
Gorse Shieldbug	<i>Piezodorus lituratus</i>	2010
-	<i>Pithanus maerkelii</i>	2010
-	<i>Plagiognathus albipennis</i>	2010
-	<i>Plagiognathus chrysanthemi</i>	2010
-	<i>Stygnocoris sp.</i>	2010
Spear Thistle Lacebug	<i>Tingis cardui</i>	2010

#### **Coleoptera (Beetles): 19 species**

Common name	Scientific name	Last recorded
-	<i>Abax ater</i>	2010
-	<i>Agnoles sp.</i>	2010
-	<i>Apion sp.</i>	2010
-	<i>Bembidion saxatile</i>	2010

Common name	Scientific name	Last recorded
Bronze Carabid	<i>Carabus nemoralis</i>	2010
Seven-Spot Ladybird	<i>Coccinella septempunctata</i>	2010
-	<i>Harpalus sabulicola</i>	1996
-	<i>Harpalus rubripes</i>	2010
Clover Leaf Weevil	<i>Hypera postica</i>	1983
-	<i>Licinus punctatulus</i>	1982
-	<i>Longitarsus flavicornis</i>	1983
-	<i>Notiophilus biguttatus</i>	2010
Devil's Coach-Horse	<i>Ocypus olens</i>	2000
Black Vine Weevil	<i>Otiorhynchus sulcatus</i>	2010
-	<i>Phyllobius virideaeris</i>	2010
Black Clock Beetle	<i>Pterostichus madidus</i>	2010
Common Red Soldier Beetle	<i>Rhagonycha fulva</i>	2010
Pea-leaf Weevil	<i>Sitona lineatus</i>	2010
-	<i>Sitona puncticollis</i>	2010

#### Diptera (True Flies): 17 species

Common name	Scientific name	Last recorded
-	<i>Asphondylia melanopus</i>	2010
-	<i>Dasineura urtica</i>	2010
Marmalade Hoverfly	<i>Episyrphus balteatus</i>	1982
-	<i>Eristalis arbustorum</i>	1982
Common Drone Fly	<i>Eristalis tenax</i>	2010
-	<i>Neoascia podagrica</i>	2010
-	<i>Phytomyza cirsii</i>	2010
-	<i>Phytomyza lonicerae</i>	2010
-	<i>Phytomyza vitalba</i>	2010
-	<i>Pipiza sp.</i>	2010
-	<i>Platycheirus clypeatus</i>	2010
-	<i>Rhopalomyia millefolii</i>	2010
Pied Hoverfly	<i>Scaeva pyrastris</i>	2010
-	<i>Syrphus ribesii</i>	2010
Lesser Banded Hoverfly	<i>Syrphus vitripennis</i>	2010
Thistle Gall Fly	<i>Urophora cardui</i>	2010
Hornet Mimic Hoverfly	<i>Volucella zonaria</i>	2010

#### Lepidoptera (Butterflies): 19 species

Common name	Scientific name	Last recorded
Essex Skipper	<i>Colias croceus</i>	2010
Large Skipper	<i>Ochlodes sylvanus</i>	2022
Large White	<i>Pieris rapae</i>	2015
Small White	<i>Polyommatus icarus</i>	2017
Green-veined White	<i>Pieris napi</i>	2022
Clouded Yellow	<i>Pieris brassicae</i>	2022
Small Heath	<i>Colias croceus</i>	2022
Ringlet	<i>Maniola jurtina</i>	2018
Meadow Brown	<i>Coenonympha pamphilus</i>	2019
Gatekeeper	<i>Maniola jurtina</i>	2011
Marbled White	<i>Pyronia tithonus</i>	2019
Red Admiral	<i>Aglais urticae</i>	2021
Painted Lady	<i>Vanessa atalanta</i>	2022
Peacock	<i>Melanargia galathea</i>	2020



Common name	Scientific name	Last recorded
Small Tortoiseshell	<i>Inachis io</i>	2022
Comma	<i>Polygonia c-album</i>	2022
Small Copper	<i>Lycaena phlaeas</i>	2020
Green Hairstreak	<i>Callophrys rubi</i>	2020
Common Blue	<i>Vanessa cardui</i>	2022

### ***Lepidoptera* (Moths): 374 species**

Common name	Scientific name	Last recorded
Rose Leaf-miner	<i>Stigmella anomalella</i>	2022
Yellow-backed Clothes Moth	<i>Monopis obviella</i>	2019
Felt Clothes Moth	<i>Monopis imella</i>	2021
Daisy Bent-wing	<i>Bucculatrix nigricomella</i>	2022
Ribwort Slender	<i>Aspilapteryx tringipennella</i>	2020
Little Slender	<i>Calybites phasianipennella</i>	2018
Brown Oak Slender	<i>Acrocercops brongniardella</i>	2022
Bird-cherry Ermine	<i>Yponomeuta evonymella</i>	2021
White-headed Ermine	<i>Paraswammerdamia albicapitella</i>	2022
Diamond-back Moth	<i>Plutella xylostella</i>	2022
Cocksfoot Moth	<i>Glyphipterix simpliciella</i>	2020
Fleabane Fanner	<i>Digitivalva pulicariae</i>	2022
Blackthorn Argent	<i>Argyresthia spinosella</i>	2021
Cherry-fruit Moth	<i>Argyresthia pruniella</i>	2015
Bugloss Spear-wing	<i>Tinagma ocnerosomella</i>	2020
Kent Tubic	<i>Bisigna procerella</i>	2021
White-shouldered House Moth	<i>Endrosis sarcitrella</i>	2017
Brown House Moth	<i>Hofmannophila pseudospretella</i>	2017
Small Dingy Tubic	<i>Borkhausenia fuscescens</i>	2022
Golden-brown Tubic	<i>Crassa unitella</i>	2021
Lesser Tawny Tubic	<i>Batia lunaris</i>	2021
Greater Tawny Tubic	<i>Batia lambdella</i>	2021
Common Tubic	<i>Alabonia geoffrella</i>	2020
Ruddy Streak	<i>Tachystola acroxantha</i>	2021
Long-horned Flat-body	<i>Carcina quercana</i>	2022
Dark-fringed Flat-body	<i>Agonopterix nervosa</i>	2017
Brown-spot Flat-body	<i>Agonopterix alstromeriana</i>	2022
Parsnip Moth	<i>Depressaria radiella</i>	2022
Brown Flat-body	<i>Depressaria badiella</i>	2021
Comfrey Ermel	<i>Ethmia quadrillella</i>	2022
Five-spot Ermel	<i>Ethmia terminella</i>	2021
Bordered Ermel	<i>Ethmia bipunctella</i>	2022
Bulrush Cosmet	<i>Limnaecia phragmitella</i>	2021
Pellitory Cosmet	<i>Cosmopterix pulchrimella</i>	2022
Vetch Sober	<i>Aproaerema anthyllidella</i>	2022
Acer Sober	<i>Anarsia innoxia</i>	2019
Gorse Crest	<i>Brachmia blandella</i>	2022
Thrift Neb	<i>Aristotelia brizella</i>	2020
Carline Neb	<i>Metzneria aestivella</i>	2021
Meadow Neb	<i>Metzneria metzneriella</i>	2022
Wainscot Neb	<i>Monochroa palustrellus</i>	2018
White-spot Groundling	<i>Neofriseria peliella</i>	2022
Dusky Groundling	<i>Aroga velocella</i>	2022
Beet Moth	<i>Scrobipalpa ocellatella</i>	2022
Winter Groundling	<i>Scrobipalpa costella</i>	2008

Common name	Scientific name	Last recorded
Narrow Groundling	<i>Caryocolum alsinella</i>	2020
Coast Groundling	<i>Caryocolum vicinella</i>	2022
Common Groundling	<i>Teleiodes vulgella</i>	2007
Barred Groundling	<i>Teleiodes sequax</i>	2009
Large Groundling	<i>Teleiopsis diffinis</i>	2022
Common Oak Case-bearer	<i>Coleophora lutipennella</i>	2018
Bugloss Case-bearer	<i>Coleophora pennella</i>	2020
Kent Case-bearer	<i>Coleophora galbulipennella</i>	2022
Swan-feather Dwarf	<i>Elachista argentella</i>	2022
Golden Pigmy	<i>Stigmella aurella</i>	2010
Holm-oak Pigmy	<i>Stigmella suberivora</i>	2022
New Holm-Oak Pigmy	<i>Ectoedemia heringella</i>	2022
Coast Bramble Pigmy	<i>Ectoedemia erythrogenella</i>	2022
Buff Cosmet	<i>Mompha ochraceella</i>	2020
Common Cosmet	<i>Mompha epilobiella</i>	2021
Dingy Dowd	<i>Blastobasis adustella</i>	2021
Rose Plume	<i>Cnaemidophorus rhododactyla</i>	2020
Crescent Plume	<i>Marasmarcha lunaedactyla</i>	2022
White Plume	<i>Pterophorus pentadactyla</i>	2020
Citron Plume	<i>Hellinsia carphodactyla</i>	2020
Common Plume	<i>Emmelina monodactyla</i>	2022
Vagrant Twitcher	<i>Tebenna micalis</i>	2021
Red-barred Twist	<i>Ditula angustiorana</i>	2021
Chequered Fruit-tree Tortrix	<i>Pandemis corylana</i>	2007
Carnation Tortrix	<i>Cacoecimorpha pronubana</i>	2022
Timothy Tortrix	<i>Aphelia paleana</i>	2017
Light Brown Apple-moth	<i>Epiphyas postvittana</i>	2022
Light Grey Tortrix	<i>Cnephasia incertana</i>	2020
Long-winged Shade	<i>Cnephasia longana</i>	2020
Yellow Oak Button	<i>Aleimma loeflingiana</i>	2021
Maple Button	<i>Acleris forsskaleana</i>	2020
Dark-streaked Button	<i>Acleris umbrana</i>	2022
Plain Conch	<i>Phtheochroa inopiana</i>	2022
Water-plantain Conch	<i>Gynnidomorpha alismana</i>	2021
Common Yellow Conch	<i>Agapeta hamana</i>	2021
Knapweed Conch	<i>Agapeta zoegana</i>	2021
Silver Carrot Conch	<i>Aethes williana</i>	2017
Downland Conch	<i>Aethes tesserana</i>	2022
Short-barred Yellow Conch	<i>Aethes dilucidana</i>	2021
Hemlock Yellow Conch	<i>Aethes beatricella</i>	2020
Long-barred Yellow Conch	<i>Aethes francillana</i>	2017
Rosy Conch	<i>Cochylis roseana</i>	2020
White-bodied Conch	<i>Neocochylis hybridella</i>	2022
Ox-tongue Conch	<i>Neocochylis molliculana</i>	2022
Black-headed Conch	<i>Cochylis atricapitana</i>	2022
Plum Tortrix	<i>Hedya pruniana</i>	2022
Barred Marble	<i>Celypha striana</i>	2021
Roseate Marble	<i>Celypha rosaceana</i>	2022
Thyme Marble	<i>Celypha cespitana</i>	2021
Common Marble	<i>Celypha lacunana</i>	2021
Smoky-barred Marble	<i>Lobesia abscisana</i>	2021
Shore Marble	<i>Lobesia littoralis</i>	2016
Teasel Marble	<i>Endothenia gentianaeana</i>	2018
Mottled Marble	<i>Bactra furfurana</i>	2021

Common name	Scientific name	Last recorded
Bud Moth	<i>Spilonota ocellana</i>	2021
Hoary Bell	<i>Eucosma cana</i>	2020
Marbled Bell	<i>Eucosma campoliliana</i>	2021
White-foot Bell	<i>Epiblema foenella</i>	2020
Ragwort Bell	<i>Epiblema costipunctana</i>	2020
Yellow-faced Bell	<i>Notocelia cynosbatella</i>	2017
Bramble Shoot Moth	<i>Notocelia uddmanniana</i>	2022
Sharp-winged Drill	<i>Dichrorampha acuminatana</i>	2021
Broad-blotch Drill	<i>Dichrorampha alpinana</i>	2022
Grey Gorse Piercer	<i>Cydia ulicetana</i>	2018
Codling Moth	<i>Cydia pomonella</i>	2021
Marbled Piercer	<i>Cydia splendana</i>	2021
Large Beech Piercer	<i>Cydia fagiglandana</i>	2022
Red Piercer	<i>Lathronympha strigana</i>	2022
Green Long-horn	<i>Adela reaumurella</i>	2018
Common Bagworm	<i>Psyche casta</i>	2022
Bee Moth	<i>Aphomia sociella</i>	2020
Rosy-striped Knot-horn	<i>Oncocera semirubella</i>	2022
Gorse Knot-horn	<i>Pempelia genistella</i>	2022
Dotted Oak Knot-horn	<i>Phycita roborella</i>	2021
Warted Knot-horn	<i>Acrobasis repandana</i>	2021
Grey Knot-horn	<i>Acrobasis advenella</i>	2022
Thicket Knot-horn	<i>Acrobasis suavella</i>	2021
Marbled Knot-horn	<i>Acrobasis marmorea</i>	2022
Broad-barred Knot-horn	<i>Acrobasis consociella</i>	2021
Thistle Ermine	<i>Myelois circumvoluta</i>	2021
Ash-bark Knot-horn	<i>Euzophera pinguis</i>	2020
Twin-barred Knot-horn	<i>Homoeosoma sinuella</i>	2022
Ermine Knot-horn	<i>Phycitodes binaevella</i>	2022
Small Clouded Knot-horn	<i>Phycitodes saxicola</i>	2019
False Cacao Moth	<i>Ephestia unicolorella</i>	2022
Sandhill Knot-horn	<i>Anerastia lotella</i>	2021
Long-legged Tabby	<i>Synaphe punctalis</i>	2022
Meal Moth	<i>Pyralis farinalis</i>	2022
Double-striped Tabby	<i>Hypsopygia glaucinalis</i>	2021
Rosy Tabby	<i>Endotricha flammealis</i>	2022
Straw-barred Pearl	<i>Pyrausta despicata</i>	2022
Elder Pearl	<i>Anania coronata</i>	2022
Small Magpie	<i>Anania hortulata</i>	2022
European Corn-borer	<i>Ostrinia nubilalis</i>	2022
Rusty-dot Pearl	<i>Udea ferrugalis</i>	2022
Mother of Pearl	<i>Pleuroptya ruralis</i>	2020
Olive-tree Pearl	<i>Palpita vitrealis</i>	2017
Long-legged China-mark	<i>Dolicharthria punctalis</i>	2022
Rush Veneer	<i>Nomophila noctuella</i>	2022
Box-tree Moth	<i>Cydalima perspectalis</i>	2021
Starry Pearl	<i>Cynaeda dentalis</i>	2022
Dark Bordered Pearl	<i>Evergestis limbata</i>	2022
Chequered Pearl	<i>Evergestis pallidata</i>	2021
Large Grey	<i>Scoparia subfusca</i>	2022
Common Grey	<i>Scoparia ambigualis</i>	2022
Meadow Grey	<i>Scoparia pyralella</i>	2022
Little Grey	<i>Eudonia lacustrata</i>	2022
Narrow-winged Grey	<i>Eudonia angustea</i>	2020



Common name	Scientific name	Last recorded
Small Grey	<i>Eudonia mercurella</i>	2022
Marsh Grey	<i>Eudonia pallida</i>	2017
Reed Veneer	<i>Chilo phragmitella</i>	2020
Bulrush Veneer	<i>Calamotropha paludella</i>	2019
Garden Grass-veneer	<i>Chrysoteuchia culmella</i>	2020
Inlaid Grass-veneer	<i>Crambus pascuella</i>	2009
Hook-streak Grass-veneer	<i>Crambus lathoniellus</i>	2019
Satin Grass-veneer	<i>Crambus perlella</i>	2022
Barred Grass-veneer	<i>Agriphila inquinatella</i>	2017
Straw Grass-veneer	<i>Agriphila straminella</i>	2022
Elbow-stripe Grass-veneer	<i>Agriphila geniculea</i>	2017
Chequered Grass-veneer	<i>Catoptria falsella</i>	2020
Waste Grass-veneer	<i>Pediasia contaminella</i>	2022
Little Grass-veneer	<i>Platytes cerussella</i>	2022
Hook-tipped Grass-veneer	<i>Platytes alpinella</i>	2019
Brown China-mark	<i>Elophila nymphaeata</i>	2009
Water Veneer	<i>Acentria ephemerella</i>	2022
Small China-mark	<i>Cataclysta lemnata</i>	2021
Ringed China-mark	<i>Parapoynx stratiotata</i>	2020
Giant Water-veneer	<i>Schoenobius gigantella</i>	2021
Orange Swift	<i>Triodia sylvina</i>	2009
Common Swift	<i>Korscheltellus lupulina</i>	2020
Leopard Moth	<i>Zeuzera pyrina</i>	2022
Six-belted Clearwing	<i>Bembecia ichneumoniformis</i>	2020
Six-spot Burnet	<i>Zygaena filipendulae</i>	2018
Oak Hook-tip	<i>Watsonalla binaria</i>	2019
Dusky Hook-tip	<i>Drepana curvatula</i>	2018
Chinese Character	<i>Cilix glaucata</i>	2022
Buff Arches	<i>Habrosyne pyritoides</i>	2022
Satin Lutestring	<i>Tetheella fluctuosa</i>	2018
Common Lutestring	<i>Ochropacha duplaris</i>	2019
The Lackey	<i>Malacosoma neustria</i>	2021
Oak Eggar	<i>Lasiocampa quercus</i>	2022
The Drinker	<i>Euthrix potatoria</i>	2020
Poplar Hawk-moth	<i>Laothoe populi</i>	2021
Death's-head Hawk-moth	<i>Acherontia atropos</i>	2010
Privet Hawk-moth	<i>Sphinx ligustri</i>	2021
Pine Hawk-moth	<i>Sphinx pinastri</i>	2022
Elephant Hawk-moth	<i>Deilephila elpenor</i>	2022
Small Elephant Hawk-moth	<i>Deilephila porcellus</i>	2021
Least Carpet	<i>Idaea rusticata</i>	2022
Dwarf Cream Wave	<i>Idaea fuscovenosa</i>	2022
Small Dusty Wave	<i>Idaea seriata</i>	2017
Single-dotted Wave	<i>Idaea dimidiata</i>	2022
Treble Brown Spot	<i>Idaea trigeminata</i>	2022
Small Fan-footed Wave	<i>Idaea biselata</i>	2020
Riband Wave	<i>Idaea aversata</i>	2022
Mullein Wave	<i>Scopula marginepunctata</i>	2021
Small Blood-vein	<i>Scopula imitaria</i>	2022
Blood-Vein	<i>Timandra comae</i>	2022
The Vestal	<i>Rhodometra sacraria</i>	2022
Shaded Broad-bar	<i>Scotopteryx chenopodiata</i>	2021
Garden Carpet	<i>Xanthorhoe fluctuata</i>	2022
Red Twin-spot Carpet	<i>Xanthorhoe spadicearia</i>	2007

Common name	Scientific name	Last recorded
Yellow Shell	<i>Camptogramma bilineata</i>	2022
Common Carpet	<i>Epirrhoe alternata</i>	2022
July Highflyer	<i>Hydriomena furcata</i>	2019
Grey Pine Carpet	<i>Thera obeliscata</i>	2019
Blue-bordered Carpet	<i>Plemyria rubiginata</i>	2021
Barred Yellow	<i>Cidaria fulvata</i>	2016
Purple Bar	<i>Cosmorhoe ocellata</i>	2007
Barred Straw	<i>Gandaritis pyraliata</i>	2019
Small White Wave	<i>Asthena albulata</i>	2007
Small Waved Umber	<i>Horisme vitalbata</i>	2020
Pretty Chalk Carpet	<i>Melanthia procellata</i>	2007
Double-striped Pug	<i>Gymnoscelis rufifasciata</i>	2018
The V-Pug	<i>Chloroclystis v-ata</i>	2022
Haworth's Pug	<i>Eupithecia haworthiata</i>	2022
Channel Islands Pug	<i>Eupithecia ultimaria</i>	2019
Netted Pug	<i>Eupithecia venosata</i>	2019
Plain Pug	<i>Eupithecia simplicata</i>	2020
Lime-speck Pug	<i>Eupithecia centaureata</i>	2022
Freyer's Pug	<i>Eupithecia intricata</i>	2022
Wormwood Pug	<i>Eupithecia absinthiata</i>	2022
Common Pug	<i>Eupithecia vulgata</i>	2010
Yellow-barred Brindle	<i>Acasis viretata</i>	2019
The Magpie	<i>Abraxas grossulariata</i>	2022
Clouded Border	<i>Lomaspilis marginata</i>	2021
Peacock Moth	<i>Macaria notata</i>	2007
Scorched Wing	<i>Plagodis dolabraria</i>	2019
Brimstone Moth	<i>Opisthograptis luteolata</i>	2020
Bordered Beauty	<i>Epione repandaria</i>	2019
Dusky Thorn	<i>Ennomos fuscantaria</i>	2017
Early Thorn	<i>Selenia dentaria</i>	2018
Lunar Thorn	<i>Selenia lunularia</i>	2019
Scalloped Oak	<i>Crocallis elinguaris</i>	2018
Swallow-tailed Moth	<i>Ourapteryx sambucaria</i>	2022
Peppered Moth	<i>Biston betularia</i>	2022
Waved Umber	<i>Menophra abruptaria</i>	2017
Willow Beauty	<i>Peribatodes rhomboidaria</i>	2022
Mottled Beauty	<i>Alcis repandata</i>	2018
The Engrailed	<i>Ectropis crepuscularia</i>	2021
Common White Wave	<i>Cabera pusaria</i>	2019
Clouded Silver	<i>Lomographa temerata</i>	2021
Light Emerald	<i>Campaea margaritaria</i>	2017
Barred Red	<i>Hylaea fasciaria</i>	2022
Yellow Belle	<i>Aspitates ochrearia</i>	2021
Rest Harrow	<i>Aplasta ononaria</i>	2019
Grass Emerald	<i>Pseudoterpna pruinata</i>	2022
Small Emerald	<i>Hemistola chrysoprasaria</i>	2021
Sussex Emerald	<i>Thalera fimbrialis</i>	2022
Common Emerald	<i>Hemithea aestivaria</i>	2020
Oak Processionary	<i>Thaumetopoea processionea</i>	2020
Sallow Kitten	<i>Furcula furcula</i>	2018
Lobster Moth	<i>Stauropus fagi</i>	2022
Iron Prominent	<i>Notodonta dromedarius</i>	2020
Swallow Prominent	<i>Pheosia tremula</i>	2021
Pale Prominent	<i>Pterostoma palpina</i>	2021

Common name	Scientific name	Last recorded
Coxcomb Prominent	<i>Ptilodon capucina</i>	2007
Maple Prominent	<i>Ptilodon cucullina</i>	2022
Buff-tip	<i>Phalera bucephala</i>	2022
Chocolate-tip	<i>Clostera curtula</i>	2020
The Herald	<i>Scoliopteryx libatrix</i>	2018
Straw Dot	<i>Rivula sericealis</i>	2017
The Snout	<i>Hypena proboscidalis</i>	2022
Buttoned Snout	<i>Hypena rostralis</i>	2019
White Satin Moth	<i>Leucoma salicis</i>	2021
Brown-tail	<i>Euproctis chrysorrhoea</i>	2022
The Vapourer	<i>Orgyia antiqua</i>	2021
Buff Ermine	<i>Spilosoma lutea</i>	2022
Ruby Tiger	<i>Phragmatobia fuliginosa</i>	2022
Garden Tiger	<i>Arctia caja</i>	2018
Jersey Tiger	<i>Euplagia quadripunctaria</i>	2022
The Cinnabar	<i>Tyria jacobaeae</i>	2022
Crimson Speckled	<i>Utetheisa pulchella</i>	2022
Rosy Footman	<i>Miltochrista miniata</i>	2022
Round-winged Muslin	<i>Thumatha senex</i>	2022
Buff Footman	<i>Eilema depressa</i>	2020
Dingy Footman	<i>Eilema griseola</i>	2020
Common Footman	<i>Eilema lurideola</i>	2021
Scarce Footman	<i>Eilema complana</i>	2022
Pigmy Footman	<i>Eilema pygmaeola</i>	2022
Plumed Fan-foot	<i>Pechipogo plumigeralis</i>	2022
Beautiful Hook-tip	<i>Laspeyria flexula</i>	2022
Dark Crimson Underwing	<i>Catocala sponsa</i>	2020
The Spectacle	<i>Abrostola tripartita</i>	2007
Dark Spectacle	<i>Abrostola triplasia</i>	2008
Burnished Brass	<i>Diachrysia chrysis</i>	2022
Silver Y	<i>Autographa gamma</i>	2021
The Four-spotted	<i>Tyta luctuosa</i>	2021
Nut-tree Tussock	<i>Colocasia coryli</i>	2020
Dark/Grey Dagger	<i>Acronicta tridens/psi agg.</i>	2020
The Sycamore	<i>Acronicta aceris</i>	2022
Knot Grass	<i>Acronicta rumicis</i>	2022
Poplar Grey	<i>Subacronicta megacephala</i>	2021
The Coronet	<i>Craniophora ligustri</i>	2022
Copper Underwing	<i>Amphipyra pyramidea</i>	2021
Mouse Moth	<i>Amphipyra tragopoginis</i>	2020
Bordered Sallow	<i>Pyrrhia umbra</i>	2022
Bordered Straw	<i>Heliothis peltigera</i>	2020
Tree-lichen Beauty	<i>Cryphia algae</i>	2007
Marbled Green	<i>Nyctobrya muralis</i>	2022
Mottled Rustic	<i>Caradrina morpheus</i>	2020
The Uncertain	<i>Hoplodrina octogenaria</i>	2022
The Rustic	<i>Hoplodrina blanda</i>	2020
Treble Lines	<i>Charanyca trigrammica</i>	2020
Old Lady	<i>Mormo maura</i>	2010
Pale-shouldered Cloud	<i>Chloantha hyperici</i>	2021
Angle Shades	<i>Phlogophora meticulosa</i>	2017
Dusky Sallow	<i>Eremobia ochroleuca</i>	2022
Saltern Ear	<i>Amphipoea fucosa</i>	2018
Flounced Rustic	<i>Luperina testacea</i>	2017



Common name	Scientific name	Last recorded
Large Wainscot	<i>Rhizedra lutosa</i>	2008
Fen Wainscot	<i>Arenostola phragmitidis</i>	2020
Dusky Brocade	<i>Apamea remissa</i>	2010
Rustic Shoulder-knot	<i>Apamea sordens</i>	2019
Dark Arches	<i>Apamea monoglypha</i>	2022
Light Arches	<i>Apamea lithoxylaea</i>	2021
Common Rustic	<i>Mesapamea secalis</i>	2021
Rosy Minor	<i>Litoligia literosa</i>	2022
Cloaked Minor	<i>Mesoligia furuncula</i>	2022
Marbled Minor agg.	<i>Oligia</i> agg.	2019
The Sallow	<i>Cirrhia icteritia</i>	2008
Brown-spot Pinion	<i>Agrochola litura</i>	2017
Red-line Quaker	<i>Agrochola lota</i>	2008
Lunar Underwing	<i>Omphaloscelis lunosa</i>	2017
Blair's Shoulder-knot	<i>Lithophane leautieri</i>	2008
Centre-barred Sallow	<i>Atethmia centrago</i>	2017
Feathered Brindle	<i>Aporophyla australis</i>	2017
Black Rustic	<i>Aporophyla nigra</i>	2017
Feathered Ranunculus	<i>Polymixis lichenea</i>	2017
Feathered Gothic	<i>Tholera decimalis</i>	2007
Light Brocade	<i>Lacanobia w-latinum</i>	2019
Bright-line Brown-eye	<i>Lacanobia oleracea</i>	2022
The Shears	<i>Hada plebeja</i>	2022
Cabbage Moth	<i>Mamestra brassicae</i>	2010
The Champion	<i>Sideridis rivularis</i>	2021
Broad-barred White	<i>Hecatera bicolorata</i>	2022
Varied Coronet	<i>Hadena compta</i>	2021
Marbled Coronet	<i>Hadena confusa</i>	2022
White Spot	<i>Hadena albimacula</i>	<1998
Tawny Shears	<i>Hadena perplexa</i>	2022
Common Wainscot	<i>Mythimna pallens</i>	2021
Smoky Wainscot	<i>Mythimna impura</i>	2022
The Delicate	<i>Mythimna vitellina</i>	2021
White-point	<i>Mythimna albipuncta</i>	2017
The Clay	<i>Mythimna ferrago</i>	2022
L-album Wainscot	<i>Mythimna l-album</i>	2020
White-line Dart	<i>Euxoa tritici</i>	2022
Light Feathered Rustic	<i>Agrotis cinerea</i>	2019
Heart and Dart	<i>Agrotis exclamationis</i>	2020
Turnip Moth	<i>Agrotis segetum</i>	2017
Heart and Club	<i>Agrotis clavis</i>	2021
Sand Dart	<i>Agrotis ripae</i>	2007
Shuttle-shaped Dart	<i>Agrotis puta</i>	2021
The Flame	<i>Axylia putris</i>	2021
Flame Shoulder	<i>Ochropleura plecta</i>	2021
Small Square-spot	<i>Diarsia rubi</i>	2017
Large Yellow Underwing	<i>Noctua pronuba</i>	2021
Broad-bordered Yellow Underwing	<i>Noctua fimbriata</i>	2021
Lesser Yellow Underwing	<i>Noctua comes</i>	2022
Langmaid's Yellow Underwing	<i>Noctua janthina</i>	2022
Lesser Br.-bordered Y. Underwing	<i>Noctua janthe</i>	2020
Square-spot Rustic	<i>Xestia xanthographa</i>	2017
Setaceous Hebrew Character	<i>Xestia c-nigrum</i>	2020
Double Square-spot	<i>Xestia triangulum</i>	2020

Common name	Scientific name	Last recorded
Autumnal Rustic	<i>Eugnorisma glareosa</i>	2017
Kent Black Arches	<i>Meganola albula</i>	2022
Short-cloaked Moth	<i>Nola cucullatella</i>	2021
Green Silver-lines	<i>Pseudoips prasinana</i>	2021
Oak Nycteoline	<i>Nycteola revayana</i>	2019

#### **Hymenoptera (Wasps, Bees and Ants): 11 species**

Common name	Scientific name	Last recorded
Small Garden Bumble Bee	<i>Bombus hortorum</i>	2010
Large Red Tailed Bumble Bee	<i>Bombus lapidarius</i>	2014
Common Carder Bee	<i>Bombus pascuorum</i>	2010
Early Bumble Bee	<i>Bombus pratorum</i>	1974
Red-tailed Carder Bee	<i>Bombus ruderarius</i>	1974
Buff-tailed Bumble Bee	<i>Bombus terrestris</i>	2010
Bramble Gall Wasp	<i>Diastrophus rubi</i>	2010
Bedeguar Gall Wasp	<i>Diplolepis rosae</i>	2010
Common Yellow Ant	<i>Lasius flavus</i>	2010
Common Black Ant	<i>Lasius niger</i>	2010
Common Wasp	<i>Vespula vulgaris</i>	2010

#### **Mollusca (Molluscs): 13 species**

Common name	Scientific name	Last recorded
Black Slug	<i>Arion ater</i>	2010
Common Garden Slug	<i>Arion distinctus</i>	2010
Grove Snail	<i>Cepaea nemoralis</i>	2010
Striped Snail	<i>Cernuella virgata</i>	2010
Netted Slug	<i>Deroceras reticulatum</i>	1982
Common Garden Snail	<i>Helix aspersa</i>	2010
Common Periwinkle	<i>Littorina littorea</i>	1993
Flat Periwinkle	<i>Littorina obtusata</i>	1993
Rough Periwinkle	<i>Littorina saxatilis</i>	1993
Kentish Snail	<i>Monacha cantiana</i>	2000
Common mussel	<i>Mytilus edulis</i>	1993
Dog Whelk	<i>Nucella lapillus</i>	1993
Common Limpet	<i>Patella vulgata</i>	1993

#### **Annelida (Annelid worms): 3 species**

Common name	Scientific name	Last recorded
Sea Mouse	<i>Aphrodita aculeata</i>	2012
Blow Lug	<i>Arenicola marina</i>	1993
Sand Mason	<i>Lanice conchilega</i>	1993

#### **Lichens: 62 species**

Common name	Scientific name	Last recorded
-	<i>Aspicilia calcarea</i>	2001
-	<i>Buellia aethalea</i>	2001
-	<i>Buellia ocellata</i>	2001
-	<i>Caloplaca citrina</i>	2001
-	<i>Caloplaca crenulatella</i>	2001
-	<i>Caloplaca holocarpa</i>	2001

Common name	Scientific name	Last recorded
-	<i>Candelariella aurella</i>	2001
-	<i>Cetraria aculeate</i>	2001
-	<i>Cladonia cervicornis</i>	2001
-	<i>Cladonia chlorophaea</i>	2001
-	<i>Cladonia ciliate</i>	2001
-	<i>Cladonia fimbriata</i>	2010
-	<i>Cladonia floerkeana</i>	2001
-	<i>Cladonia foliacea</i>	2001
-	<i>Cladonia furcate</i>	2001
-	<i>Cladonia ochrochlora</i>	2001
Reindeer Moss	<i>Cladonia portentosa</i>	2010
-	<i>Cladonia pyxidata</i>	2001
-	<i>Cladonia ramulosa</i>	2001
-	<i>Cladonia rangiformis</i>	2001
-	<i>Collema crispum</i>	2001
-	<i>Collema tenax</i>	2001
-	<i>Diploicia canescens</i>	2001
-	<i>Diploschistes muscorum</i>	2001
-	<i>Diploschistes scruposus</i>	2001
-	<i>Flavoparmelia caperata</i>	2001
-	<i>Hypocenomyce scalaris</i>	2001
Dark Crottle	<i>Hypogymnia physodes</i>	2001
-	<i>Lecanora chlarotera</i>	2001
-	<i>Lecanora confusa</i>	2001
-	<i>Lecanora dispersa</i>	2001
-	<i>Lecanora expallens</i>	2001
-	<i>Lecanora symmicta</i>	2001
-	<i>Lecanora varia</i>	2001
-	<i>Lecidella elaeochroma</i>	2001
-	<i>Lecidella scabra</i>	2001
-	<i>Lecidella stigmatea</i>	2001
-	<i>Melanelia subaurifera</i>	2001
-	<i>Micarea denigrata</i>	2001
Salted Shield Lichen	<i>Parmelia saxatilis</i>	2010
Netted Shield Lichen	<i>Parmelia sulcata</i>	2001
-	<i>Peltigera canina</i>	2001
-	<i>Phaeophyscia orbicularis</i>	2001
-	<i>Physcia adscendens</i>	2001
-	<i>Physcia caesia</i>	2001
-	<i>Physcia tenella</i>	2001
-	<i>Physconia grisea</i>	2001
-	<i>Placynthiella icmalea</i>	2001
-	<i>Porpidia tuberculosa</i>	2001
-	<i>Punctelia subrudecta</i>	2001
-	<i>Ramalina canariensis</i>	2001
-	<i>Ramalina farinacea</i>	2001
-	<i>Rhizocarpon lavatum</i>	2001
-	<i>Sarcogyne regularis</i>	2001
-	<i>Trapeliopsis flexuosa</i>	2001
-	<i>Verrucaria macrostoma</i>	2001
-	<i>Verrucaria nigrescens</i>	2001
-	<i>Xanthoparmelia mougeotii</i>	2001
-	<i>Xanthoria calcicola</i>	2001
-	<i>Xanthoria candelaria</i>	2001



Common name	Scientific name	Last recorded
Common Orange Lichen	<i>Xanthoria parietina</i>	2010
-	<i>Xanthoria polycarpa</i>	2001

#### Mosses: 10 species

Common name	Scientific name	Last recorded
Rough-stalked Feather-moss	<i>Brachythecium rutabulum</i>	2001
Silvergreen Bryum-moss	<i>Bryum argenteum</i>	2010
Capillary Thread-moss	<i>Bryum capillare</i>	2010
Broom Fork-moss	<i>Dicranum scoparium</i>	2001
-	<i>Grimmia sp.</i>	2010
Cypress-leaved Plait-moss	<i>Hypnum cupressiforme</i>	2010
Heath Plait-moss	<i>Hypnum jutlandicum</i>	1995
Juniper Haircap	<i>Polytrichum juniperinum</i>	1995
Neat Feather-moss	<i>Pseudoscleropodium purum</i>	2001
Common Tamarisk-moss	<i>Thuidium tamariscinum</i>	2010

#### *Pteridophyta* (Ferns and Horsetails): 2 species

Common name	Scientific name	Last recorded
Broad Buckler-fern	<i>Dryopteris dilatata</i>	2013
Field Horsetail	<i>Equisetum arvense</i>	2013

#### Flowering Plants: 318 species

Common name	Scientific name	Last recorded
Field Maple	<i>Acer campestre</i>	1995
Norway Maple	<i>Acer platanoides</i>	2001
Sycamore	<i>Acer pseudoplatanus</i>	2013
Yarrow	<i>Achillea millefolium</i>	2013
Agrimony	<i>Agrimonia eupatoria</i>	1995
Common Bent	<i>Agrostis capillaris</i>	2013
Creeping Bent	<i>Agrostis stolonifera</i>	2013
Early Hair-Grass	<i>Aira praecox</i>	2001
Bugle	<i>Ajuga reptans</i>	1995
Rosy Garlic	<i>Allium roseum</i>	2013
Wild Garlic	<i>Allium vineale</i>	2010
Pyramidal Orchid	<i>Anacamptis pyramidalis</i>	2016
Scarlet Pimpernel	<i>Anagallis arvensis</i>	2013
Chaffweed	<i>Anagallis minima</i>	1995
Barren Brome	<i>Anisantha sterilis</i>	2013
Sweet Vernal-grass	<i>Anthoxanthum odoratum</i>	2013
Cow Parsley	<i>Anthriscus sylvestris</i>	2010
Kidney Vetch	<i>Anthyllis vulneraria</i>	2001
Parsley Piert	<i>Aphanes arvensis agg.</i>	2013
Greater Burdock	<i>Arctium lappa</i>	2000
Lesser Burdock	<i>Arctium minus</i>	2013
Wood Burdock	<i>Arctium minus nemorosum</i>	2000
Slender Sandwort	<i>Arenaria serpyllifolia</i>	2013
Thrift	<i>Armeria maritima</i>	2013
Horse-Radish	<i>Armoracia rusticana</i>	1991
False Oat-grass	<i>Arrhenatherum elatius</i>	2013
Sea Wormwood	<i>Artemisia maritima</i>	2010
Mugwort	<i>Artemisia vulgaris</i>	2010

Common name	Scientific name	Last recorded
Lords-And-Ladies	<i>Arum maculatum</i>	1995
Common Orache	<i>Atriplex patula</i>	2001
Spear-Leaved Orache	<i>Atriplex prostrata</i>	2010
Wild Oat	<i>Avena fatua</i>	1991
Black Horehound	<i>Ballota nigra</i>	2013
Daisy	<i>Bellis perennis</i>	2013
Sea Beet	<i>Beta vulgaris</i>	2013
Silver Birch	<i>Betula pendula</i>	1995
Tor-Grass	<i>Brachypodium pinnatum</i>	1991
False-Brome	<i>Brachypodium sylvaticum</i>	1995
Black Mustard	<i>Brassica nigra</i>	2010
Common Soft-brome	<i>Bromus hordeaceus</i>	1995
White Bryony	<i>Bryonia dioica</i>	2001
Butterfly-bush	<i>Buddleja davidii</i>	2013
Pot Marigold	<i>Calendula officinalis</i>	1991
Water-Starwort	<i>Callitriche sp.</i>	2003
Hedge Bindweed	<i>Calystegia sepium</i>	2010
Large Bindweed	<i>Calystegia silvatica</i>	1995
Shepherd's-purse	<i>Capsella bursa-pastoris</i>	2013
Hairy Bitter-cress	<i>Cardamine hirsuta</i>	2013
Wetted Thistle	<i>Carduus crispus</i>	1995
Slender Thistle	<i>Carduus tenuiflorus</i>	2001
Sand Sedge	<i>Carex arenaria</i>	2013
Divided Sedge	<i>Carex divisa</i>	1975
Hairy Sedge	<i>Carex hirta</i>	1991
Prickly Sedge	<i>Carex muricata</i>	1995
Pendulus Sedge	<i>Carex pendula</i>	2010
Pill Sedge	<i>Carex pilulifera</i>	1995
Carline Thistle	<i>Carlina vulgaris</i>	2013
Sweet Chestnut	<i>Castanea sativa</i>	1991
Sea Fern-grass	<i>Catapodium marinum</i>	2013
Fern-grass	<i>Catapodium rigidum</i>	2013
Common Knapweed	<i>Centaurea nigra</i>	1995
Red Valerian	<i>Centranthus ruber</i>	2013
Sea Mouse-ear	<i>Cerastium diffusum</i>	2013
Red Centaury	<i>Erythraea centaurium</i>	2010
Common Mouse-Ear	<i>Cerastium fontanum</i>	2010
Sticky Mouse-ear	<i>Cerastium glomeratum</i>	2013
Little Mouse-ear	<i>Cerastium semidecandrum</i>	2013
Snow-in-summer	<i>Cerastium tomentosum</i>	2010
Rough Chervil	<i>Chaerophyllum temulum</i>	1991
Rosebay Willowherb	<i>Chamerion angustifolium</i>	2001
Fat Hen	<i>Chenopodium album</i>	2010
Many-Seeded Goosefoot	<i>Chenopodium polyspermum</i>	1995
Dwarf Thistle	<i>Cirsium acaule</i>	1995
Creeping Thistle	<i>Cirsium arvense</i>	2010
Marsh Thistle	<i>Cirsium palustre</i>	1995
Spear Thistle	<i>Cirsium vulgare</i>	2013
Traveller's Joy	<i>Clematis vitalba</i>	2013
Danish Scurvygrass	<i>Cochlearia danica</i>	1991
Hemlock	<i>Conium maculatum</i>	1991
Field Bindweed	<i>Convolvulus arvensis</i>	2013
Dogwood	<i>Cornus sanguinea</i>	1995
Lesser Swine-cress	<i>Coronopus didymus</i>	2013

Common name	Scientific name	Last recorded
Swine-Cress	<i>Coronopus squamatus</i>	2000
Hazel	<i>Corylus avellana</i>	1995
Sea Kale	<i>Crambe maritima</i>	2019
Hawthorn	<i>Crataegus monogyna</i>	2010
Rough Hawk's-Beard	<i>Crepis biennis</i>	1995
Smooth Hawk's-beard	<i>Crepis capillaris</i>	2013
Beaked Hawk's-Beard	<i>Crepis vesicaria</i>	1995
Rock Samphire	<i>Crithmum maritimum</i>	2013
Montbretia	<i>Crocasmia x crocosmiiflora</i>	2010
Hound's-tongue	<i>Cynoglossum officinale</i>	2013
Crested Dog's-Tail	<i>Cynosurus cristatus</i>	1995
Broom	<i>Cytisus scoparius</i>	2013
Cock's-foot	<i>Dactylis glomerata</i>	2013
Wild Carrot	<i>Daucus carota</i>	2016
Foxglove	<i>Digitalis purpurea</i>	2013
Perennial Wall-Rocket	<i>Diploaxis tenuifolia</i>	1995
Wild Teasel	<i>Dipsacus fullonum</i>	2013
Hoary Whitlowgrass	<i>Draba incana</i>	2001
Viper's-bugloss	<i>Echium vulgare</i>	2013
Sea Couch	<i>Elytrigia atherica</i>	2010
Common Couch	<i>Elytrigia repens</i>	2010
American Willowherb	<i>Epilobium ciliatum</i>	1995
Great Willowherb	<i>Epilobium hirsutum</i>	2001
Broad-leaved Willowherb	<i>Epilobium montanum</i>	2010
Square-stalked Willowherb	<i>Epilobium tetragonum</i>	2003
Blue Fleabane	<i>Erigeron acer</i>	1993
Common Stork's-Bill	<i>Erodium cicutarium agg.</i>	1995
Musk Stork's-bill	<i>Erodium moschatum</i>	2013
Common Whitlowgrass	<i>Erophila verna</i>	2013
Hemp-agrimony	<i>Eupatorium cannabinum</i>	2013
Sun Spurge	<i>Euphorbia helioscopia</i>	2013
Petty Spurge	<i>Euphorbia peplus</i>	2013
Black Bindweed	<i>Fallopia convolvulus</i>	1991
Fine-Leaved Sheep's-Fescue	<i>Festuca filiformis</i>	1995
Sheep's Fescue	<i>Festuca ovina</i>	2010
Meadow Fescue	<i>Festuca pratensis</i>	2010
Red Fescue	<i>Festuca rubra</i>	2013
Common Cudweed	<i>Filago vulgaris</i>	2013
Fennel	<i>Foeniculum vulgare</i>	2010
Ash	<i>Fraxinus excelsior</i>	2013
Common Ramping-fumitory	<i>Fumaria muralis</i>	2013
Common Fumitory	<i>Fumaria officinalis</i>	2013
Goat's-rue	<i>Galega officinalis</i>	2013
Common Hemp-Nettle	<i>Galeopsis tetrahit</i>	2010
Cleavers	<i>Galium aparine</i>	2010
Hedge Bedstraw	<i>Galium mollugo</i>	2013
Lady's Bedstraw	<i>Galium verum</i>	2013
Cut-Leaved Crane's-Bill	<i>Geranium dissectum</i>	1991
Dove's-foot Crane's-bill	<i>Geranium molle</i>	2013
Small-Flowered Crane's-Bill	<i>Geranium pusillum</i>	1995
Herb-Robert	<i>Geranium robertianum</i>	2013
Yellow Horned-poppy	<i>Glaucium flavum</i>	2022
Ground-ivy	<i>Glechoma hederacea</i>	2013
Common Ivy	<i>Hedera helix</i>	2013



Common name	Scientific name	Last recorded
Sunflower	<i>Helianthemum annuus</i>	2010
Hogweed	<i>Heracleum sphondylium</i>	2010
Hawkweed sp.	<i>Hiaracium sp.</i>	2010
Lizard Orchid	<i>Himantoglossum hircinum</i>	2017
Sea-Buckthorn	<i>Hippophae rhamnoides</i>	1995
Hoary Mustard	<i>Hirschfeldia incana</i>	2010
Yorkshire-fog	<i>Holcus lanatus</i>	2013
Creeping Soft-Grass	<i>Holcus mollis</i>	2010
Sea Sandwort	<i>Honckenya peploides</i>	2013
Wall Barley	<i>Hordeum murinum</i>	2013
Perforate St John's-Wort	<i>Hypericum perforatum</i>	2013
Cat's-ear	<i>Hypochaeris radicata</i>	2013
Holly	<i>Ilex aquifolium</i>	2013
Ploughman's-spikenard	<i>Inula conyzae</i>	2013
Stinking Iris	<i>Iris foetidissima</i>	2010
Turkish Iris	<i>Iris orientalis</i>	2000
Sheep's-bit	<i>Jasione montana</i>	2013
Compact Rush	<i>Juncus conglomeratus</i>	1995
Soft Rush	<i>Juncus effusus</i>	1995
Field Scabious	<i>Knautia arvensis</i>	1995
Crested Hair-grass	<i>Koeleria macrantha</i>	2013
Laburnum	<i>Laburnum anagyroides</i>	2003
Prickly Lettuce	<i>Lactuca serriola</i>	2010
Greater Lettuce	<i>Lactuca virosa</i>	1991
Hen-Bit Dead-Nettle	<i>Lamium amplexicaule</i>	1995
Red Dead-Nettle	<i>Lamium purpureum</i>	1995
Nipplewort	<i>Lapsana communis</i>	2010
Sea Pea	<i>Lathyrus japonicus</i>	2001
Everlasting Pea	<i>Lathyrus latifolius</i>	2010
Grass Vetchling	<i>Lathyrus nissolia</i>	2001
Tree Mallow	<i>Lavatera arborea</i>	2010
Autumnal Hawkbit	<i>Leontodon autumnalis</i>	1995
Lesser Hawkbit	<i>Leontodon saxatilis</i>	2013
Hoary Cress	<i>Lepidium draba</i>	2013
Oxeye Daisy	<i>Leucanthemum vulgare</i>	2013
Garden Privet	<i>Ligustrum ovalifolium</i>	2010
Wild Privet	<i>Ligustrum vulgare</i>	1995
Purple Toadflax	<i>Linaria purpurea</i>	2010
Common Toadflax	<i>Linaria vulgaris</i>	2010
Perennial Rye-grass	<i>Lolium perenne</i>	2013
Cultivated Honey-suckle	<i>Lonicera sp.</i>	2010
Common Bird's-foot-trefoil	<i>Lotus corniculatus</i>	2019
Narrow-leaved Bird's-foot-trefoil	<i>Lotus tenuis</i>	1995
Domestic Apple	<i>Malus domestica</i>	2010
Musk-Mallow	<i>Malva moschata</i>	1991
Common Mallow	<i>Malva sylvestris</i>	2013
Pineapple Weed	<i>Matricaria discoidea</i>	2010
Scented Mayweed	<i>Matricaria recutita</i>	1991
Spotted Medick	<i>Medicago arabica</i>	2013
Black Medick	<i>Medicago lupulina</i>	2013
Tall Melilot	<i>Melilotus altissimus</i>	2000
White Melilot	<i>Melilotus alba</i>	2010
Ribbed Melilot	<i>Melilotus officinalis</i>	2001
Corn Mint	<i>Mentha arvensis</i>	1995

Common name	Scientific name	Last recorded
Annual Mercury	<i>Mercurialis annua</i>	2013
Dog's Mercury	<i>Mercurialis perennis</i>	2001
Wall Lettuce	<i>Mycelis muralis</i>	2010
Field Forget-me-not	<i>Myosotis arvensis</i>	2013
Changing Forget-Me-Not	<i>Myosotis discolor</i>	2001
Early Forget-Me-Not	<i>Myosotis ramosissima</i>	2001
Red Bartsia	<i>Odontites vernus</i>	1995
Common Evening Primrose	<i>Oenothera biennis</i>	2010
Common Restharrow	<i>Ononis repens</i>	2013
Bee Orchid	<i>Ophrys apifera</i>	2013
Bird's-Foot	<i>Ornithopus perpusillus</i>	1995
Long-headed Poppy	<i>Papaver dubium</i>	1991
Common Poppy	<i>Papaver rhoeas</i>	2013
Opium Poppy	<i>Papaver somniferum</i>	2013
Hard Grass	<i>Parapholis strigosa</i>	2010
Wild Parsnip	<i>Pastinaca sativa</i>	2013
Winter Heliotrope	<i>Petasites fragrans</i>	2013
Reed Canary-Grass	<i>Phalaris arundinacea</i>	1995
Smaller Cat's-Tail	<i>Phleum bertolonii</i>	1995
Bristly Oxtongue	<i>Picris echioides</i>	2013
Hawkweed Oxtongue	<i>Picris hieracioides</i>	2013
Mouse-ear-hawkweed	<i>Pilosella officinarum</i>	2013
Burnet-Saxifrage	<i>Pimpinella saxifraga</i>	2000
Buck's-horn Plantain	<i>Plantago coronopus</i>	2013
Ribwort Plantain	<i>Plantago lanceolata</i>	2013
Greater Plantain	<i>Plantago major</i>	2010
Annual Meadow-grass	<i>Poa annua</i>	2013
Bulbous Meadow-grass	<i>Poa bulbosa</i>	2013
Flattened Meadow-Grass	<i>Poa compressa</i>	1995
Spreading Meadow-grass	<i>Poa humilis</i>	2013
Rough Meadow-grass	<i>Poa trivialis</i>	2013
Knotgrass	<i>Polygonum aviculare</i>	1991
Tormentil	<i>Potentilla erecta</i>	1995
Creeping Cinquefoil	<i>Potentilla reptans</i>	2013
Selfheal	<i>Prunella vulgaris</i>	1995
Blackthorn	<i>Prunus spinosa</i>	2010
Yellow Corydalis	<i>Pseudofumaria lutea</i>	2003
Reflexed Saltmarsh-Grass	<i>Puccinellia distans</i>	1995
Common Fleabane	<i>Pulicaria dysenterica</i>	1995
Turkey Oak	<i>Quercus cerris</i>	1991
Evergreen Oak	<i>Quercus ilex</i>	2013
Pedunculate Oak	<i>Quercus robur</i>	2013
Meadow Buttercup	<i>Ranunculus acris</i>	2001
Bulbous Buttercup	<i>Ranunculus bulbosus</i>	2004
Lesser Celandine	<i>Ranunculus ficaria</i>	1991
Creeping Buttercup	<i>Ranunculus repens</i>	2010
Wild Radish	<i>Raphanus raphanistrum</i>	2010
Weld	<i>Reseda luteola</i>	2013
Dog Rose	<i>Rosa canina</i>	2010
Sweet-Briar	<i>Rosa rubiginosa agg.</i>	1995
Dewberry	<i>Rubus caesius</i>	2001
Bramble	<i>Rubus fruticosus agg.</i>	2016
Common Sorrel	<i>Rumex acetosa</i>	2001
Sheep's Sorrel	<i>Rumex acetosella</i>	2013

Common name	Scientific name	Last recorded
Branched Dock	<i>Rumex conglomeratus</i>	2010
Curled Dock	<i>Rumex crispus</i>	2013
Broad-leaved Dock	<i>Rumex obtusifolius</i>	2013
Fiddle Dock	<i>Rumex pulcher</i>	1991
Annual Pearlwort	<i>Sagina apetala</i>	2010
Procumbent Pearlwort	<i>Sagina procumbens</i>	2013
Goat Willow	<i>Salix caprea</i>	1995
Willow	<i>Salix cinerea</i>	1995
Wild Clary	<i>Salvia verbenaca</i>	2013
Elder	<i>Sambucus nigra</i>	2010
Common Soapwort	<i>Saponaria officinalis</i>	2010
Biting Stonecrop	<i>Sedum acre</i>	2013
White Stonecrop	<i>Sedum album</i>	1995
English Stonecrop	<i>Sedum anglicum</i>	2013
Hoary Ragwort	<i>Senecio erucifolius</i>	2013
Common Ragwort	<i>Senecio jacobaea</i>	2013
Oxford Ragwort	<i>Senecio squalidus</i>	2010
Sticky Groundsel	<i>Senecio viscosus</i>	2013
Groundsel	<i>Senecio vulgaris</i>	2010
Field Madder	<i>Sherardia arvensis</i>	2013
Red Campion	<i>Silene dioica</i>	2010
White Campion	<i>Silene latifolia</i>	1995
Nottingham Catchfly	<i>Silene nutans</i>	2013
Sea Campion	<i>Silene uniflora</i>	2013
Bladder Campion	<i>Silene vulgaris</i>	1995
Charlock	<i>Sinapis arvensis</i>	1991
Hedge Mustard	<i>Sisymbrium officinale</i>	1995
Alexanders	<i>Smyrnium olusatrum</i>	2016
Bittersweet	<i>Solanum dulcamara</i>	2010
Perennial Sow-Thistle	<i>Sonchus arvensis</i>	1991
Prickly Sow-thistle	<i>Sonchus asper</i>	2013
Smooth Sow-Thistle	<i>Sonchus oleraceus</i>	2010
Hedge Woundwort	<i>Stachys sylvatica</i>	2010
Lesser Stitchwort	<i>Stellaria graminea</i>	2013
Common Chickweed	<i>Stellaria media</i>	2010
Lesser Chickweed	<i>Stellaria pallida</i>	1991
Russian Comfrey	<i>Symphytum officinale x asperum</i>	2013
White Comfrey	<i>Symphytum orientale</i>	2013
Dandelion	<i>Taraxacum officinale agg.</i>	2010
Shepherd's Cress	<i>Teesdalia nudicaulis</i>	2013
Wood Sage	<i>Teucrium scorodonia</i>	2013
Field Penny-Cress	<i>Thlaspi arvense</i>	1991
Upright Hedge-Parsley	<i>Torilis japonica</i>	1991
Knotted Hedge-parsley	<i>Torilis nodosa</i>	2013
Goat's-Beard	<i>Tragopogon pratensis</i>	1991
Hare's-Foot Clover	<i>Trifolium arvense</i>	1995
Hop Trefoil	<i>Trifolium campestre</i>	2013
Lesser Trefoil	<i>Trifolium dubium</i>	1995
Red Clover	<i>Trifolium pratense</i>	2000
White Clover	<i>Trifolium repens</i>	2010
Rough Clover	<i>Trifolium scabrum</i>	2013
Knotted Clover	<i>Trifolium striatum</i>	2013
Subterranean Clover	<i>Trifolium subterraneum</i>	1995
Scentless Mayweed	<i>Tripleurospermum inodorum</i>	2010

Common name	Scientific name	Last recorded
Sea Mayweed	<i>Tripleurospermum maritimum</i>	2013
Yellow Oat-grass	<i>Trisetum flavescens</i>	2013
Colt's-foot	<i>Tussilago farfara</i>	2016
Gorse	<i>Ulex europaeus</i>	2022
Common Nettle	<i>Urtica dioica</i>	2013
Common Mullein	<i>Verbascum thapsus</i>	2010
Vervain	<i>Verbena officinalis</i>	1995
Wall Speedwell	<i>Veronica arvensis</i>	2013
Germander Speedwell	<i>Veronica chamaedrys</i>	1995
Ivy-Leaved Speedwell agg.	<i>Veronica hederifolia</i>	1991
Common Field-speedwell	<i>Veronica persica</i>	2013
Thyme-Leaved Speedwell	<i>Veronica serpyllifolia</i>	1995
Tufted Vetch	<i>Vicia cracca</i>	1995
Hairy Tare	<i>Vicia hirsuta</i>	2013
Common Vetch	<i>Vicia sativa</i>	2013
Bush Vetch	<i>Vicia sepium</i>	2010
Fine-Leaved Vetch	<i>Vicia tenuifolia</i>	2001
Smooth Tare	<i>Vicia tetrasperma</i>	2013
Field Pansy	<i>Viola arvensis</i>	2013
Hairy Violet	<i>Viola hirta</i>	1995
Sweet Violet	<i>Viola odorata</i>	2003

#### Fungi: 9 species

Common name	Scientific name	Last recorded
Salt-loving Mushroom	<i>Agaricus bernardii</i>	2010
	<i>Agaricus comtulus</i>	2010
	<i>Claviceps purpurea</i>	2010
Shaggy Ink Cap	<i>Coprinus cornatus</i>	2010
	<i>Hygrocybe nivea</i>	2010
	<i>Inocybe sp.</i>	2010
Fairy-ring Champignon	<i>Marasmius creades</i>	2010
Violet Bramble Rust	<i>Phragmidium violaceum</i>	2010
Salt-loving Mushroom	<i>Psilocybe foenisecii</i>	2010



**Appendix 3: Site List – Hythe Ranges: 175 species (including parts of site within TR13 G and TR13 M)**

1	Red-legged Partridge
2	Grey Partridge
3	Pheasant
4	Brent Goose
5	Canada Goose
6	Greylag Goose
7	Pink-footed Goose
8	Tundra Bean Goose
9	White-fronted Goose
10	Mute Swan
11	Bewick's Swan
12	Shelduck
13	Gadwall
14	Wigeon
15	Mallard
16	Pintail
17	Teal
18	Tufted Duck
19	Eider
20	Velvet Scoter
21	Common Scoter
22	Long-tailed Duck
23	Goldeneye
24	Red-breasted Merganser
25	Swift
26	Cuckoo
27	Feral Pigeon
28	Stock Dove
29	Woodpigeon
30	Turtle Dove
31	Collared Dove
32	Moorhen
33	Red-necked Grebe
34	Great Crested Grebe
35	Slavonian Grebe
36	Stone Curlew
37	Oystercatcher
38	Avocet
39	Lapwing
40	Golden Plover
41	Grey Plover
42	Ringed Plover
43	Little Ringed Plover
44	Whimbrel
45	Curlew
46	Bar-tailed Godwit
47	Black-tailed Godwit
48	Turnstone
49	Knot
50	Sanderling
51	Dunlin
52	Purple Sandpiper
53	Woodcock

89	Spoonbill
90	Grey Heron
91	Little Egret
92	Sparrowhawk
93	Montagu's Harrier
94	Barn Owl
95	Tawny Owl
96	Little Owl
97	Long-eared Owl
98	Short-eared Owl
99	Hoopoe
100	Kingfisher
101	Lesser Spotted Woodpecker
102	Great Spotted Woodpecker
103	Green Woodpecker
104	Kestrel
105	Merlin
106	Hobby
107	Red-backed Shrike
108	Jay
109	Magpie
110	Jackdaw
111	Rook
112	Carrion Crow
113	Hooded Crow
114	Raven
115	Coal Tit
116	Blue Tit
117	Great Tit
118	Woodlark
119	Skylark
120	Shore Lark
121	Sand Martin
122	Swallow
123	House Martin
124	Long-tailed Tit
125	Willow Warbler
126	Chiffchaff
127	Sedge Warbler
128	Reed Warbler
129	Grasshopper Warbler
130	Blackcap
131	Garden Warbler
132	Lesser Whitethroat
133	Whitethroat
134	Dartford Warbler
135	Firecrest
136	Goldcrest
137	Wren
138	Starling
139	Ring Ouzel
140	Blackbird
141	Fieldfare

54	Jack Snipe
55	Snipe
56	Common Sandpiper
57	Green Sandpiper
58	Redshank
59	Greenshank
60	Kittiwake
61	Black-headed Gull
62	Little Gull
63	Mediterranean Gull
64	Common Gull
65	Great Black-backed Gull
66	Herring Gull
67	Caspian Gull
68	Lesser Black-backed Gull
69	Sandwich Tern
70	Little Tern
71	Common Tern
72	Arctic Tern
73	Black Tern
74	Great Skua
75	Pomarine Skua
76	Arctic Skua
77	Little Auk
78	Guillemot
79	Razorbill
80	Red-throated Diver
81	Black-throated Diver
82	Great Northern Diver
83	Fulmar
84	Manx Shearwater
85	Balearic Shearwater
86	Gannet
87	Shag
88	Cormorant

142	Redwing
143	Song Thrush
144	Mistle Thrush
145	Spotted Flycatcher
146	Robin
147	Nightingale
148	Black Redstart
149	Redstart
150	Whinchat
151	Stonechat
152	Wheatear
153	House Sparrow
154	Tree Sparrow
155	Duncock
156	Yellow Wagtail
157	Grey Wagtail
158	Pied Wagtail
159	Meadow Pipit
160	Tree Pipit
161	Rock Pipit
162	Chaffinch
163	Brambling
164	Bullfinch
165	Greenfinch
166	Twite
167	Linnet
168	Lesser Redpoll
169	Goldfinch
170	Siskin
171	Lapland Bunting
172	Snow Bunting
173	Corn Bunting
174	Yellowhammer
175	Reed Bunting