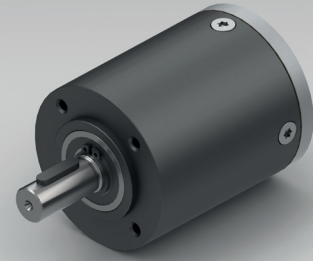


## PLANETARY GEARBOX GPL065



		1-STAGE	2-STAGE	3-STAGE			
<b>Ratio i:1</b>	<b>Max. motor shaft-ØD</b>			<b>Ratio i:1</b>	<b>Max. motor shaft-ØD</b>	49	12
						56	12
		12.25	14	64	12		
		14	12	70	12		
		16	12	80	12		
		20	12	100	12		
		24	12	120	12		
		25	9	144	12		
<b>3.5</b>	14	30	9	184	12		
<b>4</b>	12	30.67	12	235.11	12		
<b>5</b>	9	38.33	9	293.89	9		
<b>6</b>	6	46	6	352.67	6		
<b>7.67</b>	5	58.78	5	450.63	5		

**Standard scope of delivery** Gearbox lubricated for duration of service life, dust-proof package, motor pinion, mounting screws, paper gasket and assembly instructions (adapter plate optional).

Customized versions also available for small quantities.

Rated torque continuous	Type Standard	Type R	Nm	3	15	38
Rated torque intermittent	Type Standard	Type R	Nm	6	30	75
Rated torque continuous	Type V	Type S	Nm	6	30	38
Rated torque intermittent	Type V	Type S	Nm	12	38	75
Max. efficiency at rated torque			%	90	85	80
Average backlash at no load	Type Standard	Type V	arcmin ≤	20	35	50
Average backlash at no load	Type R		arcmin ≤	10	20	30
Average backlash at no load	Type S		arcmin ≤	6	12	15
Weight without adapter plate			g	1000	1400	1750
Dimension L			mm	53.5	71.5	89.5
Dimension L1			mm	32	30	
Dimension A			mm	13	11	
Dimension B			mm	34	32	
Max. radial load	F <sub>R</sub>	15 mm from shaft end	N	400		
Max. axial load	F <sub>A</sub>		N	320		
Max. continuous rated speed at drive			min <sup>-1</sup>	4000		
Max. intermittent rated speed at drive			min <sup>-1</sup>	6000		
Temperature range			°C	-25 / +90		

Type V = heavy duty version | Type R = reduced backlash version | Type S = low backlash version

Changes reserved © GYSIN AG | 05/2015