



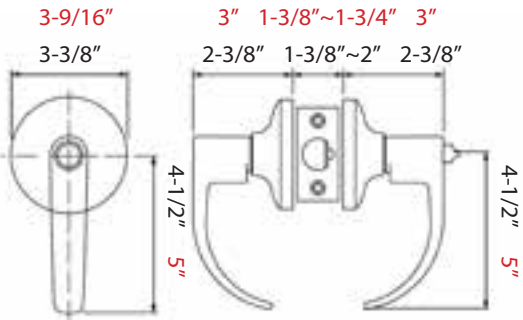
Grade 1 F SERIES Cylindrical Leverset
Grade 2 E SERIES Cylindrical Leverset

Grade 1 dimensions shown in red.
Grade 2 dimensions shown in black.

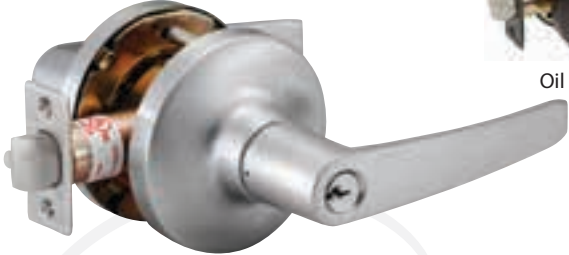
SD LEVER
Shown in Dull Chrome (US26D)



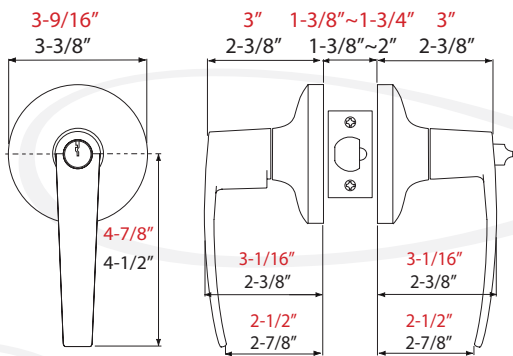
Oil Rubbed Bronze US10B



MD LEVER
Shown in Dull Chrome (US26D)



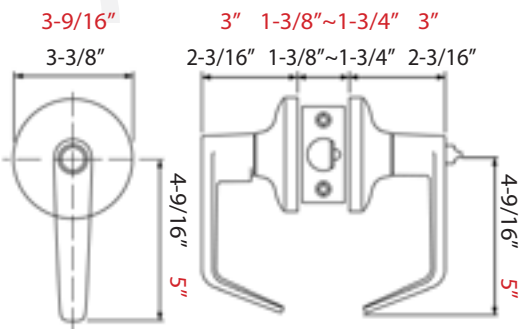
Oil Rubbed Bronze US10B



CT LEVER
Shown in Dull Chrome (US26D)



Oil Rubbed Bronze US10B



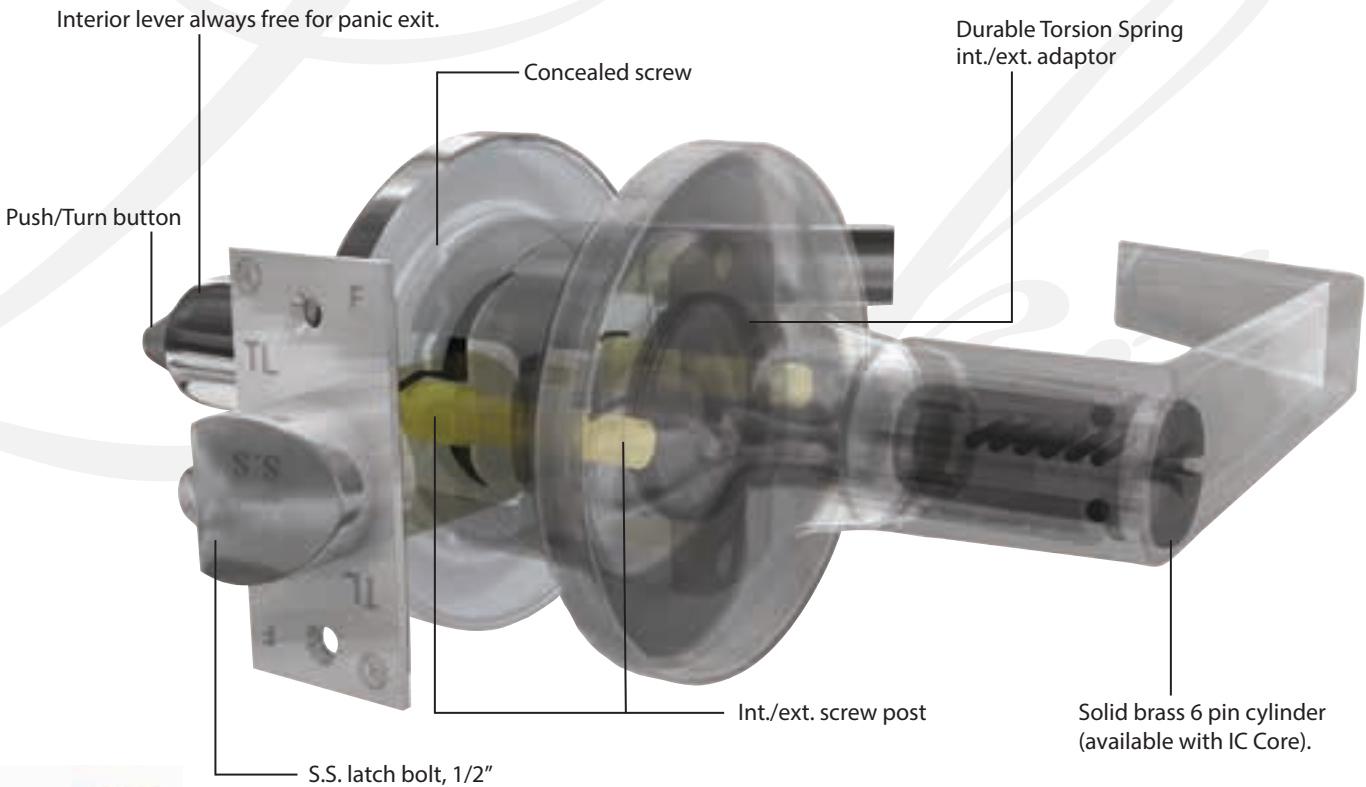
Grade 1 F SERIES Cylindrical Leverset
Grade 2 E SERIES Cylindrical Leverset



Conforms with BHMA/ANSI A156.2.
Series 4000, Grade-1. Exceeds 800,000
Cycles, Grade-2. Exceeds 400,000 Cycles.
Meets A117.1 Accessibility Code.



Meets ADA Requirements.
Specially designed for Barrier
Free Application.



(SFIC) Interchangeable
Core Available

PRODUCT FEATURES

- Independent Torsion Spring.
- Concealed Mounting Screws.
- Fast and Easy Installation.
- Clutch Function.
- Removable Through Bolt.
- Anti-Friction Latch Retractor.
- Non Handed.
- Panic Proof (inside always free).

FINISHES AVAILABLE

BHMA	US	
SYMBOL	CODE	DESCRIPTION
613	10B	Oil Rubbed Bronze
626	26D	Dull Chrome

PRODUCT SPECIFICATIONS

APPLICATIONS: For offices, schools, hospitals, apartments, hotel/motels, and other public buildings.
DOOR THICKNESS: 1-3/8" ~ 2" door thickness (35~51 mm). Adjustable Mounting Plate.
BACKSET: 2-3/4" standard. 2-3/8", 3-3/4" or 5" optional.
STRIKE: ANSI strike standard.
LATCHBOLT: 1/2" throw stainless steel latch bolt (12.7 mm) RH or LH applications. Meets UL 3-Hour fire rating. UL File No. R13776.
EXPOSED TRIM: Wrought brass. Antibacterial Coating available (CT style only). Levers return to within 1/2" of door face and are Zinc casting, plated to match trim finish.
KEYING: Schlage C 6-Pin Keyway. KWI available. Custom keying available upon request.
INTERCHANGEABLE CORE: Optional small-format 6-Pin or 7-Pin available. (CT and SD styles only).
ANSI & FEDERAL STANDARDS: Meets & exceeds requirement of BHMA/ANSI A156.2 Series 4000, Grade-1 800,000 Cycles, Grade-2 400,000 Cycles.
FUNCTIONS: See page 8 for Function Guide

LATCHES

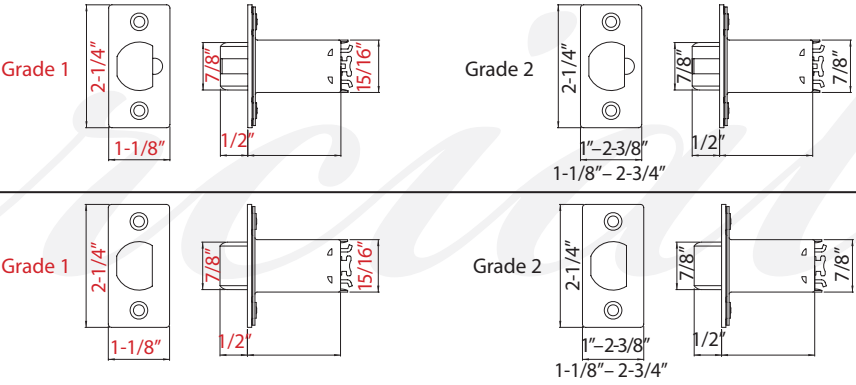


Deadlatch



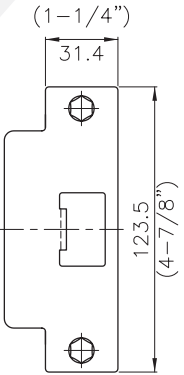
Springlatch

DIMENSIONS



2-3/4" Backset Standard, 2-3/8" Optional

STRIKE



CODE: 9109
ASA Strike Standard