

C3 MICROWAVE WALL CABINET
1-1/2" = 1'-0"

C4 WALL CABINET SECTION
1-1/2" = 1'-0"

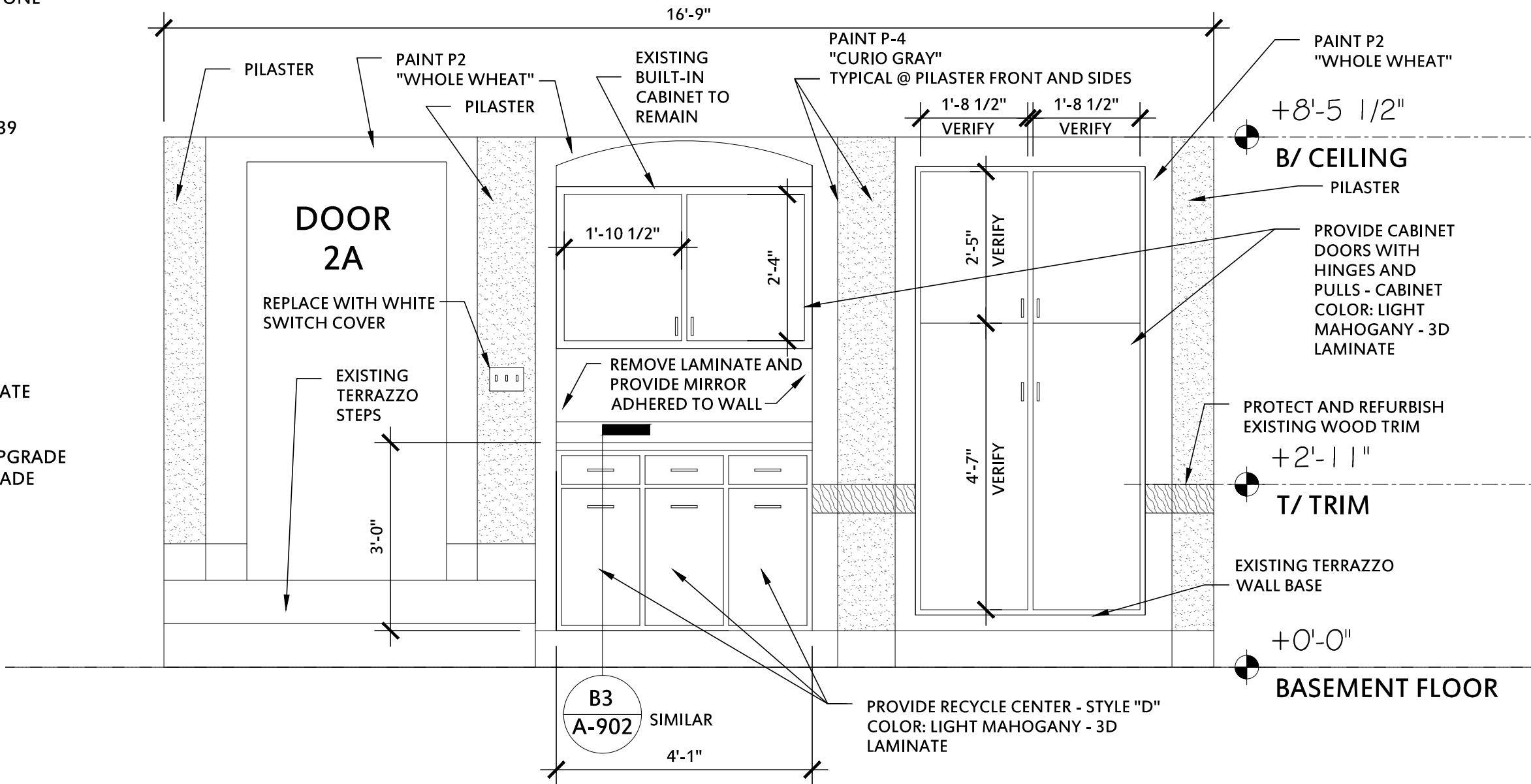
QUARTZ SOLID SURFACE COUNTER TOP

MANUFACTURER: CAESARSTONE
COLOR: "CARMEL" 9350

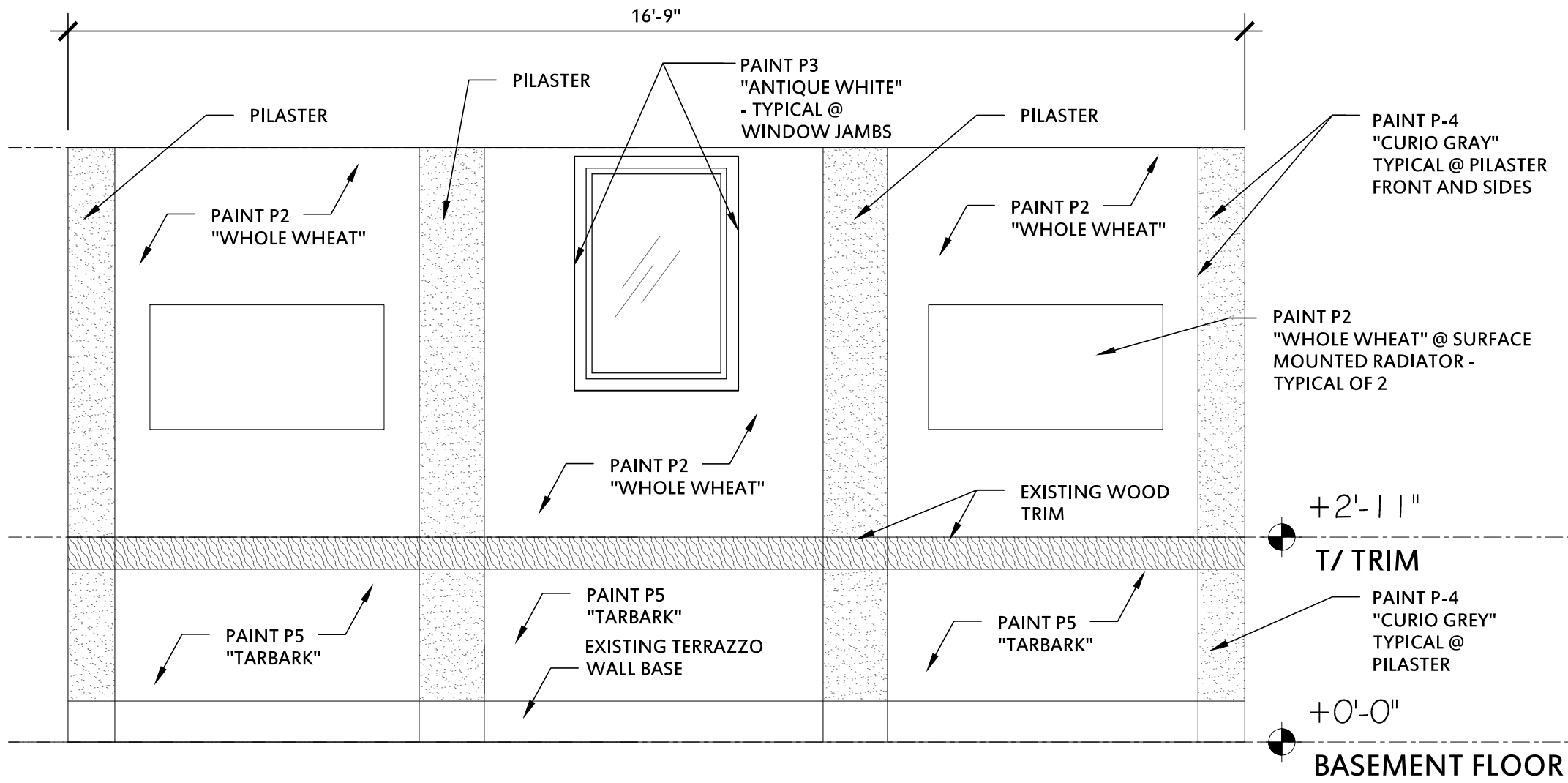
SUPPLIER:
STONE DESIGN INC.
551 MITCHELL ROAD
GLENDALE HEIGHTS, IL 60139
800-424-1332

CABINETY

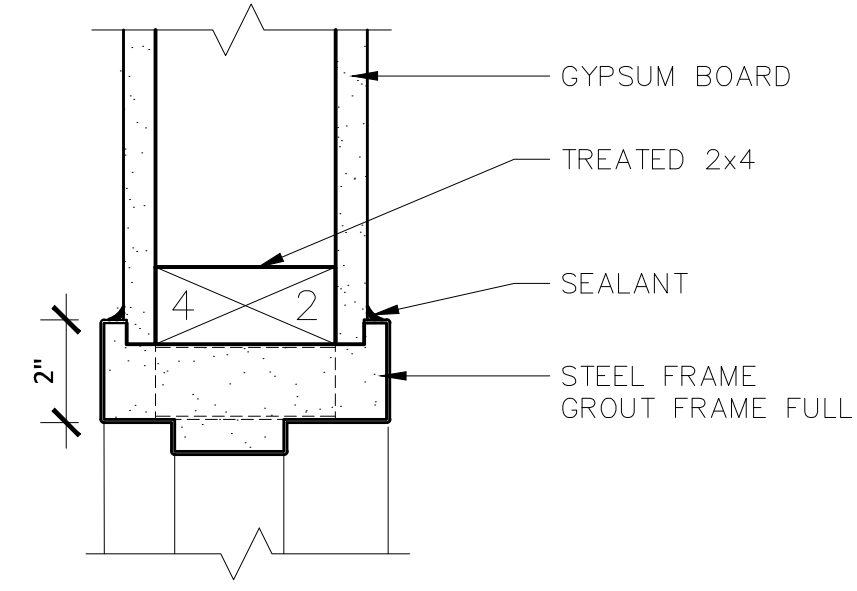
MANUFACTURER: BERTCH
CABINET MATERIAL: MDF
COLOR: ANIGRE - 3D LAMINATE
HARDWARE: VBC-P27
GRADE: CUSTOM
DRAWER GLIDE: PROVIDE UPGRADE
ROLL TRAYS: PROVIDE UPGRADE



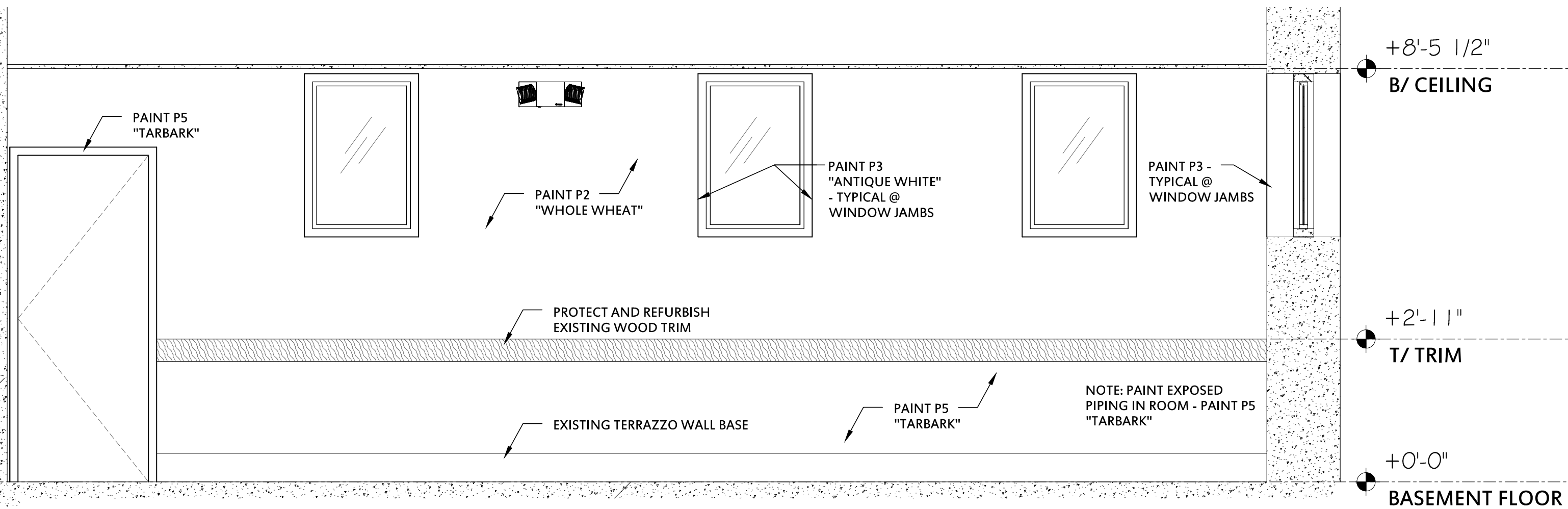
D5 INTERIOR ELEVATION
1/2" = 1'-0"



D3 INTERIOR ELEVATION
1/2" = 1'-0"



E3 TYPICAL DOOR DETAIL
3" = 1'-0"



D1 INTERIOR ELEVATION
1/2" = 1'-0"

LUMBER SPECIES

PROVIDE TREATED LUMBER WHEN IN DIRECT
CONTACT WITH CONCRETE.

POSTS, BEAMS,
HEADERS, JOISTS,
WALL STUDS,
RAFTERS

NO. 2 DOUGLAS FIR

SILL, PLATES,
BLOCKING,
BRIDGING

NO. 3 DOUGLAS FIR

INTERIOR FLOOR JOIST SPANS

40# LIVE LOAD / 10# DEAD LOAD
DEFLECTION LIMIT BY L/360 FOR LIVE LOAD ONLY

MEMBER	SPACING	NO. 2
2x6	12" O.C.	10'-3"
	16" O.C.	9'-5"
	24" O.C.	8'-1"
2x8	12" O.C.	14'-2"
	16" O.C.	12'-7"
	24" O.C.	10'-3"
2x10	12" O.C.	17'-3"
	16" O.C.	15'-5"
	24" O.C.	12'-7"
2x12	12" O.C.	20'-7"
	16" O.C.	17'-10"
	24" O.C.	14'-7"

SELECTIVE REFURBISHING OF SHELLAC STAINED WOOD
SURFACES IN THE FOLLOWING ORDER:

1. Clean the wood surface (with a solution of dishwashing liquid or Murphy Oil Soap and water to remove all wax, grease, oil, or polish). Remove paint drippings carefully as not to damage the clear coating or wood surface.
2. For worn or bare wood surfaces without stain: Stain surface to match adjacent. Apply two coats of shellac wood coating.
3. For white water rings: remove by wiping them gently with a cloth barely dampened with denatured alcohol.
4. For minor surface scratches: apply scratch-cover polish.
5. For deep scratches: Use felt-tip touch-up markers to color large scratches or edges where the stain has worn away. Apply only to damaged areas, and wipe immediately if any gets on the neighboring finish.
6. For dings and nicks: Where a clear finish is chipped but the underlying color is intact, fill the ding with a few drops of clear nail polish. After the polish dries, sand flush with 600-grit sandpaper.
7. For Gouges: Sometimes has a slightly raised burr around its perimeter. Level it by sanding lightly with 600-grit paper. Choose a wax stick that closely matches the finish, or blend two or more sticks together (in your hand or in the gouge) to get just the right color. Rub the stick over the gouge until it's slightly overfilled with wax. Scrape off the excess wax with the edge of a credit card. Rub off any wax on the surrounding surface with a piece of a brown paper bag wrapped around a flat block. Apply a coat of paste wax over the repair and the entire adjacent surface to impart an even sheen.
8. Finish: Apply a small amount of Williamsville Vax polish to a soft, dry lint-free cloth. Wipe lightly with the grain of the wood. Apply evenly and allow 8 hours to dry without activity within the room.

Architect:



ITEMS SHOWN ARE DIAGRAMMATIC AND ARE SHOWN FOR THE LIMITED PURPOSE OF INDICATING PROPOSED LOCATIONS OF THE DESIGN. CONTRACTORS SHALL PROVIDE WORK IN ACCORDANCE WITH ALL APPLICABLE CODES AND REGULATIONS REQUIRED BY THE AUTHORITY HAVING JURISDICTION. CONTRACTOR SHALL COORDINATE THE INSTALLATION OF NEW SYSTEMS WITH EXISTING SYSTEMS.

Thomas Mc Inerney Architect reserves the right to determine a fair and equitable solution to any problems, mistakes, oversights or hidden damage. Please do not hesitate to phone our office at 319-331-0365, especially immediately upon discovery a conflict with the Scope of Work.

Please do not instinctively produce a solution or proceed with work that would result in a change order requiring reimbursement by the owner.

Any solutions outside this policy shall be with prior approval and will be at the franchisee's or contractor's expense.

Project :

**SIGMA NU
RENOVATIONS**

DUBUQUE STREET

Iowa City, Iowa

Project number: 13.41

Note: © COPYRIGHT 2014
UNAUTHORIZED COPYING, DISCLOSURE
OR CONSTRUCTION WITHOUT WRITTEN
PERMISSION
BY THOMAS MCINERNEY, ARCHITECT,
IS PROHIBITED.

Issue date:

Date	Description
16.01.2013	REVIEW
29.01.2014	BID DOCUMENTS
02.20.2014	BID DOCUMENTS REVISED

Sheet Title:

**DETAILS AND
INTERIOR
ELEVATIONS**

Sheet Number:

A-902