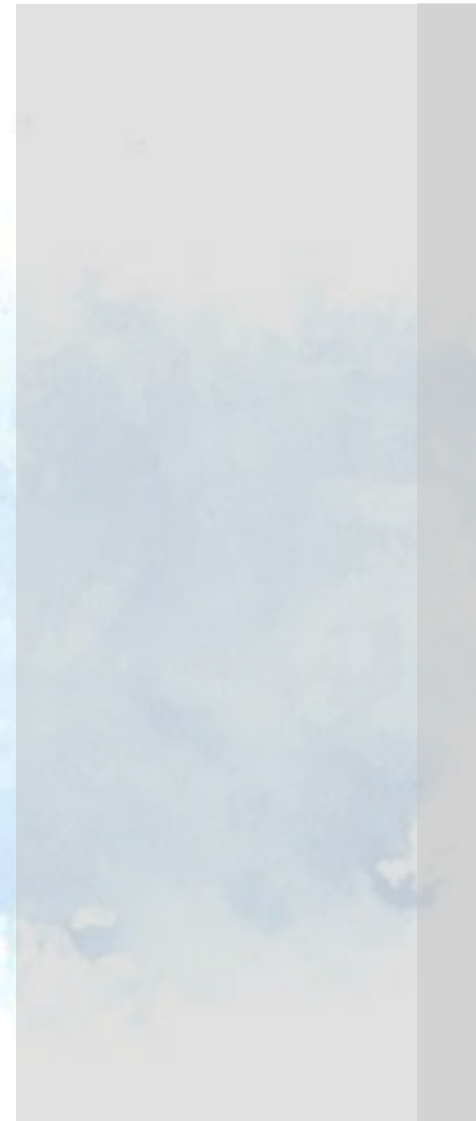


Holy Land 2022

Traveler Information

Everything you need to know!

The most important thing you can do is **PRAY** about God's will for you in going on this trip and for our travels!



TOUR DATES



FLIGHT TO EGYPT

EGYPT TOUR



FLIGHT TO EGYPT/DRIVE TO JORDAN

JORDAN TOUR



FLIGHT TO US (AFTERNOON)

OR BUS TO ISRAEL

ISRAEL TOUR



FLIGHT TO GREECE OR US

GREECE TOUR



FLIGHT TO US

TOUR COSTS

Includes:

- 5* hotels (4-4.5* US standard)
- Breakfast & Dinner
- Airport/Hotel Transfers (with group)
- Entrance & event fees
- Guide
- Bus & Driver
- Tips/porter fees
- Taxes

Does not include:

- Flight (paid separately)
- Lunch
- Transfers separate from main group
- Jordan departure tax
- Travel insurance
- Personal expenses
- Optional activities *
- 3% fee** if final payment is made with credit card

Minimal tips are included to support the guide, driver, and all hotel staff. You may wish to budget to tip more for exceptional service or to give more on each tour.

**Optional activities:*

Egypt – Camel ride at Pyramids \$25; Sound & Light show \$tbd; Mt. Sinai hike \$20

Israel – Baptism \$10, Caliber 3 (Co-Ed) \$100, Shabbat of a Lifetime +/- \$65

Greece –none

Jordan – Wadi Rum 4 wheel drive excursion \$85; camel ride \$25; tips for horse escorts at Petra \$5

COST DETAIL	Egypt Tour	Jordan Tour	Israel Tour	Greece Tour	
Detail	Per person 4 nights	Per person 3 nights	Per person 10-11 nights	Per person 9 nights	DEPOSITS & DATES (payable to xxx)
Land tour Or Land/cruise	\$ Based on 15 travelers minimum	\$ Based on 26 travelers minimum.	\$ Cost depends on # of travelers.	\$ Based on 34 travelers minimum.	\$750 by 1/31/22 (to AIT)
Tips	\$50	\$50	\$ 120	\$ 100	Included in final tour costs.
Billing fee Charged once – not once per tour	\$25	\$25	\$ -	\$ 25	Included in final tour costs
Land Total (no flight)		\$2980	\$ TBD	\$2710	TOTAL DUE April 15, 2022
Flights – self booked	Not included	Not included	Add flight from Israel to Greece; Not included	Not included	Departure from US + return from ??
Extra hotel night	n/a	n/a	\$ if going to Greece	n/a	
To room alone		\$	\$	\$	Included in final tour cost.
Ministry fee					\$100 paid once

For multiple tours, ADD column totals for each tour you're going on.

Flights

Two options



Flights - 1

Fly with the group or meet us from wherever you are!

Book your own flight however you wish

- You can book your own flight and meet us at our arrival time.
- You can share transfers to hotels if you meet the main group at the airport for arrival and depart at the same time from the last hotel. Separate transfers can be arranged for a fee or you can book your own if your flight is late or your times don't match up.
- Use airline miles if you have them

OR

Book with Skybooker (our agent)

- Contact Max@Skybooker.com or at 718.360-0660
- Tell Max that you are with Debbie's group + where you are flying from in US, which country you are going to first, and which country you are returning from.
- Max will email you a quote and a link to pay from. Once paid, he will send you your confirmation. **Send a copy of your flights to Debbie!**
- If you wish to upgrade your seat or choose seat assignments/extras, you can do that through the airline directly.

We will assist you however you decide to book your flight!

Flights

More info



Flights -2

No matter how you book your flights, please:

1. Download the airline(s) apps to your phone
2. Choose your seat assignments & upgrade if you wish. Some connecting airlines will not allow this until you get to that airport.
3. Contact the airline to reserve a wheelchair to transfer between flights or special meals if needed.
4. Email Debbie (devand@sbcglobal.net) a copy of your flights and any future changes.

TRAVEL has been challenging during COVID. Flights may be changed before departure, may arrive late, or may be cancelled with re-booking necessary.

- Fly with the group if you can so we're all on the same schedule
- Allow extra time between flights to buffer delays
- Stay flexible and patient! These trips are worth it!





Travel Insurance

Travel Group insurance will be paid with your final payment to America Israel Tours. **Coverage begins when you pay for it – NOT when you say you want coverage.** If you need coverage before final payment, buy your own separate policy.

For more details, click on the Home page link.

Travel insurance is highly recommended!
Purchase AIT's group policy (details below) our source your own – either is OK. Be sure you get a policy that covers your needs for pre-trip cancellation, medical coverage, transportation home if you get sick/hurt, etc. Look at exclusions! Policies cover total value of travel, even if through multiple providers (like tour company and airline). Pay for what you need. COVID coverage is provided per terms provided.



Dream. Explore. Travel On.



ZOOM IN!

360° GROUP CHOICE TRAVEL PROTECTION

The 360° Group Choice protection plan provides quality travel protection for all ages at competitive group rates; includes trip cancellation & interruption benefits, emergency medical coverage, along with 24/7 travel assistance & concierge services.

PLAN HIGHLIGHTS

- Primary coverage, no deductibles
- Same great rate for all ages
- Pre-existing medical condition exclusion waiver
- Trip cancellation/interruption benefit includes:
 - Sickness, injury or death³
 - Inclement weather
 - Financial default & labor strikes
 - Business reasons
 - Terrorist incident
- Missed connection benefit
- 5 hour trip delay benefit
- 12 hour baggage delay benefit
- Fast online claims⁵

BASE PLAN BENEFITS & BONUS COVERAGES

Benefits	Coverage ¹
Trip Cancellation	100% of trip cost (\$15,000 limit)
Trip Interruption	150% of trip cost (\$22,500 limit)
Trip Delay	\$1,000 (\$250/day)
Equipment Delay	\$200
Missed Connection	\$1,000
Baggage & Personal Effects	\$1,500
Baggage Delay	\$250
Emergency Medical & Dental Expenses	\$25,000 (\$500 dental sublimit)
Emergency Evacuation & Repatriation	\$150,000
Accidental Death & Dismemberment	\$10,000
Travel Assistance & Concierge Services ⁴	Included

BONUS COVERAGES

If plan is purchased at or before final trip payment.	Included
• Pre-existing Medical Condition Exclusion Waiver	Included
• Financial Default Coverage	Included

BASE PLAN RATES

Trip Cost	Plan Cost
\$0 ²	\$25
\$1 - \$500	\$50
\$501 - \$1,000	\$75
\$1,001 - \$1,500	\$105
\$1,501 - \$2,000	\$137
\$2,001 - \$3,000	\$187
\$3,001 - \$4,000	\$248
\$4,001 - \$5,000	\$313
\$5,001 - \$6,000	\$373
\$6,001 - \$7,000	\$435
\$7,001 - \$8,000	\$498
\$8,001 - \$9,000	\$559
\$9,001 - \$10,000	\$621
\$10,001 - \$11,000	\$704
\$11,001 - \$12,000	\$770
\$12,001 - \$13,000	\$836
\$13,001 - \$14,000	\$903
\$14,001 - \$15,000	\$969

Rates are per traveler. Maximum trip length allowed 364 days.

Frequently Asked Questions – COVID



Topic

COVID

Answer

The pandemic has certainly changed the world and how we travel. What we've learned:

1. Vaccinations ease travel but most countries (except Israel) have means of entry for unvaccinated travelers.
2. The world does not have a universal entry system or document requirements.
3. Most (not all) countries require a PCR test before entry and sometimes at entry. These are generally free for US travelers at CVS or similar drug stores but are not free in other countries for travelers.
4. Israel requires COVID antibodies. Being vaccinated or having had COVID gives you antibodies but Israel does not yet accept having had COVID as sufficient proof to enter. This may change.
5. Airlines monitor required documentation pre-flight and do a good job telling you what you need in their apps. Travelers have to be prepared with all documents.
6. Most health & travel insurance policies cover COVID if diagnosed. Check yours...and you need to bring proof of it on the trip.
7. Mask rules change daily. We will do what is required at the time of travel. Bring extra.
8. We DID IT (all the requirements) in 2021 and still really enjoyed our trip. It's worth it!



WE CAN DO IT!

Frequently Asked Questions



Topic	Answer
TRIP COSTS	See Costs page for detailed costs.
PAYMENT DUE DATES	Deposits: \$750 to America Israel Tours due at tour registration \$100 to Discipleship in Unexpected Ways due when Traveler Information Form is completed.
WHAT IS INCLUDED	See itinerary & cost pages
WHAT ISN'T INCLUDED	See itinerary & cost pages
MIN/MAX TRAVELERS	Minimums & maximum # of travelers apply and can impact cost. +/-50 is max on bus.
TOUR PROVIDER	America Israel Tours (americaisraeltours.com) – 4 th year! Excellent tour company offering a great value experience and amazing operational support in Egypt, Israel, Jordan, & Greece!
FLIGHTS	See the Flights page Skybooker.com Max@skybooker.com Or book your own

Frequently Asked Questions



Topic	Answer
WHO CAN TRAVEL	Anyone who can manage their travel and time independently is welcome. Travelers should be healthy enough to walk comfortably over uneven terrain, climb and descend stairs, sit for bus rides, manage their own luggage at airports, and enjoy long days with walking up to 3 miles. We suggest that children do not travel. Anyone from any church or location can join us. Singles or couples are welcome. All travelers to Israel must be vaccinated (subject to change).
TRIP ITINERARIES	See the Itineraries link. -Trips go in this order: Egypt ~ Jordan ~ Israel ~ Greece (land + cruise) -Jordan is highly recommended before Israel -You can combine tours – just add costs. -Tours may fill quickly; max 50 per tour. Spaces are allocated based on registration timing.
VISAS & PASSPORTS	All travelers will need a passport that expires at least 6 months AFTER we arrive home. Visas, if needed, are provided.

Frequently Asked Questions



Topic

Answer

SAFETY IN THE MIDDLE EAST

2021 is our 4th year traveling to this area. We have had NO safety issues or cause for concern on any trip, even when going to Gaza or the Lebanon & Syrian borders. Travel advisories are monitored and, if our in-country itinerary has to be adjusted, it will be. U.S. tourists are valued and accommodated. We cannot guarantee anything but we do not expect any issues. The trip would only be cancelled if the U.S. government prohibits citizens from traveling to countries on our itinerary or another country will not allow us entry.

GLOBALENTRY/ TSA PRE-CHECK

Travelers can use these if you have them for Customs when returning to the U.S. but they are not recognized in other countries. We recommend downloading Mobile Passport to ease passage into and out of countries.

TRAVEL INSURANCE

Travel insurance is not required but is highly recommended. See the Travel Insurance page. COVID coverage may change.

Frequently Asked Questions



Topic	Answer
FLIGHTS	See the Flights page for options.
LUGGAGE	We suggest that you pack very light in one 21-22" carry-on size wheeled bag and a backpack/tote. You can check the bag under the plane or carry it on. You do not need excess clothing or gear as clothes can be washed at some hotels. Take a small packable bag with a "sleeve" (to put over your luggage handle) for dirty laundry and things you buy. See the Suggested Packing Guidelines for more information.
ROOMMATES	We may be able to help you find one among solo travelers or you can pay the supplement to room alone. Costs are based on two people per room. Three can share with no cost reduction (only 2 per room on Greece cruise).
HOTELS	Hotels are moderate 5* (European standard similar to U.S. 4-4.5*), and well located. Wi-fi, hair dryers, and toiletries are usually available. Laundry is a hotel service; machines are not available to travelers.

Frequently Asked Questions



Topic

MEALS & BEVERAGES

Note about Egypt: Hygiene standards are not the same as we are used to. We will discuss what you can/cannot eat and restroom issues outside of hotels.

Answer

Breakfast and dinner in the hotel are provided each day - buffet style with many choices . Special dietary needs or food allergies can be accommodated within the available food options. Lunch is eaten out each day (\$8-12) as a group. Alcohol is not included except wine tasting if offered. Cold bottled water is available on the bus for a nominal cost in Egypt, Israel & Greece; free in Jordan. Breakfast usually starts at 6am (eat any time after), lunch is around 1pm, and dinner begins at 6 through the evening.

RESTROOMS

The sites we visit have public restrooms available and reasonable stops are made to use them. See note to left.

TERRAIN

These tours require a lot of walking (average 3 miles per day) on uneven terrain, up and down hills as well as on flat ground. You will need shoes with good soles & tread to walk on asphalt, concrete, dirt, gravel, sand, and through water. You can hike at Masada & Mt. Sinai. In some areas, non-walking transport can be arranged if you need it.

Frequently Asked Questions



Topic WHAT TO WEAR

Answer

See the Suggested Packing Guidelines. Modest clothing is essential. Women must have shoulders and knees covered in churches many days (sweaters over sleeveless is ok). Please do not wear gym clothes (except at Masada), short shorts or short skirts, or see-through clothing. Golf attire is fine. Backpacks and gear can be safely left on the bus. Passports should stay with you at ALL times.

MONEY

American money is accepted in Israel, Jordan, and Egypt; euros in Greece. You can use local currency if you wish. You can use credit and debit cards in most areas (not with street vendors). You will need cash for lunches, bottled water, and some optional shopping. ATMs can be used with a pin #. Suggested cash: \$500 minimum. Notify your banks/card issuers of your travel plans.

ELECTRICAL OUTLETS

You will need a power adapter (Type C, two round prongs, for EU use). You will also need a power converter if you take a hair dryer or shaver. Take cables for device charging + a 4' or longer cable for the bus outlets under the seats.

Frequently Asked Questions



Topic	Answer
CELL PHONE SERVICE OPTIONS	You can add an international data plan through your wireless provider or use only Wi-Fi. All hotels + some sites & buses have Wi-Fi.
IMMUNIZATIONS	<i>Ask your doctor what he/she recommends for your unique health conditions.</i> Tetanus, measles, DPT, MMR, hepatitis, flu, and rabies are recommended, not required. COVID-19 vaccine is required for Israel; optional (but useful) in other countries. Check this site for more information: https://wwwnc.cdc.gov/travel/destinations/list/#group-g
BUSES	All buses are modern, clean, and most have Wi-Fi on board. Some have bathrooms and some do not. Seats are 2x2 in each row with an aisle between. Depending on the number of travelers, you may or may not be seated next to someone else. Storage racks are available above your seat. Cold water is available on the bus for a small fee in Egypt, Israel, & Greece and included in Jordan.

Frequently Asked Questions



Topic

Answer

COMMUNICATION

You will hear from Debbie often. 😊

We will have a few gatherings before the tours to get to know each other and share information.

We will have a Facebook group pre-tour and a different one to share photos during the trip with family & friends while touring.

We will use WhatsApp for group messaging on tour. It's also great for FREE calls & texts home while traveling if both people have it.

CANCELLATION

America Israel Tours has cancellation policies that should be considered before you pay your \$750 non-refundable deposit. Read the policies before you register.

We want you to be committed to the travel as a lot of time goes into preparing for your tour once you pay a deposit.