



FRIENDS OF ASHBY BATH GROUNDS

IMPROVED ACCESSIBILITY AND COMMUNITY HERITAGE PROJECT



Supported by

The National Lottery®

through the Heritage Lottery Fund



FRIENDS OF ASHBY BATH GROUNDS

Formed in 2014 and now with over 130 members, the Friends of Ashby Bath Grounds' first campaign was the successful resistance to threatened house building on the Bath Grounds. In addition to our "Improved Accessibility and Heritage" project, the main subject of this exhibition, we are actively pursuing several other enhancement projects and remain vigilant to fight future threats to community and recreational use of the Grounds.

- We have adopted and maintain the central flowerbed near the South Street entrance.
- We are working with Ashby Town Council to open-up and improve the path from the railway arch to Prior Park Road.
- Our PRIDE campaign promotes responsible dog ownership; reduced litter and elimination of anti-social behaviour on the Bath Grounds.

Why not join the Friends; pick up a membership form, ring 07739 594774 or visit our website www.bathgroundsfriends.com.





DEMONSTRATION AGAINST HOUSES ON THE BATH GROUNDS (March 2014)



Friends of Ashby Bath Grounds

Pride in our Bath Grounds Campaign

Our Vision

To ensure that the highest standards of health, safety and enjoyment are achieved.

To maintain the relaxed countryside in the town feel;

Thank the majority of people who show respect for it and encourage everyone to do the same.

Unwelcome Behaviour – not wanted here

The Friends ASB initiatives;

- The Friends will continue working with police to ensure continued regular Police patrols
- Continue to encourage reporting of ASB by public, by calling 101
- We would like to form a **Bath Grounds Community Watch Group**

Would you like to volunteer to help form a Bath Grounds Community Watch Group?

We would like to build a network of Friends who can work together to keep the Bath Grounds safe and enjoyable, by reporting crimes, ASB or suspicious activity.

Dog Waste - Bag it and bin it

The Friends Dog waste initiatives;

- **Temporary Stencilling** to paths and walkways asking people to pick up and bin dog waste
- **Small flags stuck into the ground**, asking people to bag and bin their dog waste
- We would like dog owners to **Pledge to pick up**...always pick up and help others to do the same.

Would you like to volunteer for the Bath Grounds Dog Responsibility Awareness Flag Group?

By joining the Bath Grounds Dog Responsibility awareness Group you'll be working together with others in your community, you'll harness local support for ensuring dog mess is cleaned up and not left on the Bath Grounds

Litter - Bin it and Take it home.

The Friends Litter initiatives;

- **We would like to work with local business** to encourage responsible litter behaviour
- **We will continue to work with the police, NWLDC and TC** to encourage people to bin their litter & take it home
- **We would like to form a Bath Grounds Community Litter Group** (carrying out spring & autumn litter picks)

Would you be interested in volunteering for the Bath Grounds Community Litter Group?

Working together with others in your community you'll harness local support for cleaning up litter.

If you are interested in any of our 3 initiatives to tackle ASB, Dog Waste or Litter on the Bath Grounds.
Then please contact the secretary Clare Birch Tel: 07958 232291 or email bathgroundsfriends@gmail.com





ASHBY MAYOR, MARY TUCKEY, & FRIENDS' COMMITTEE AT ADOPTED FLOWER BED



THE PROJECT

The main subject of this Exhibition is the Friends of Ashby Bath Grounds' "Improved Accessibility and Heritage Project" which is now approaching completion.

The Project was conceived to improve awareness of the Grounds' fascinating history and increase their use by the public and visitors to Ashby. It has comprised construction of a new footpath and heritage trail around the Bath Grounds and a host of community heritage education activities. These have included "Have a Go" archaeology; community mosaics; walks and talks; children's education boxes; a new film and ballad; and a revised book on the Ivanhoe Baths and Spa.

Funded by grants of £40,000 from the Heritage Lottery Fund and £20,000 from North West Leicestershire District Council, the Project was launched at the Hastings Cricket Club in September 2015.





Bath Grounds Footpath Project Launch

at

The Hastings Cricket Club

Sunday, 20th September 2015 - 11.30am

The Friends of Ashby Bath Grounds in partnership with Ashby Town Council have been successful in their Heritage Lottery Fund bid and we are now able to start the Project. This includes a new footpath around the north side of the Bath Grounds, improved vehicular access to the Bowling Club and a Bath Grounds heritage trail.

Everyone welcome!!

Come along to the launch event to hear about the Project.

Bar & Buffet

Installation of a new all-weather footpath this year will link the South Street entrance to Prior Park Road

The footpath project will include a wide range of community activities to develop awareness of The Bath Grounds' fascinating history.

- Do you want to have a go at a non-intrusive archaeology using geophysics?
- Would you like to perform in the Ballad of the Bath Grounds?
- Or try your hand at producing a community heritage mosaic?

If you are interested in learning more, why not come along to the project launch event.

For annual membership of the Friends please email:
bathgroundsfriends@gmail.com





PROJECT LAUNCH DAY (Sept 2015)





PROJECT LAUNCH (Sept 2015)





PROJECT LAUNCH DAY (Sept 2015)



NEW FOOTPATH

The new path, connecting the South Street and Prior Park Road entrances of the Bath Grounds, was constructed during November 2015. Photographs show the very poor condition of the previous track. It was completed just in time for the 2015 Santa Fun Run and provided the finishing straight for the 2016 Ashby 20 road race.

Constructed from Breedon Golden Amber gravel, the path is intended to encourage community use of the Grounds throughout the year and improve connectivity between Ashby's key heritage sites. It also opens up new vistas of the Bath Grounds and their surroundings. A section of the path follows the line of a 19th century carriage drive, laid out in the heyday of the Ivanhoe Spa.

Ashby Town Council managed the construction project and have adopted the path for future care and maintenance.





BEFORE THE NEW FOOTPATH





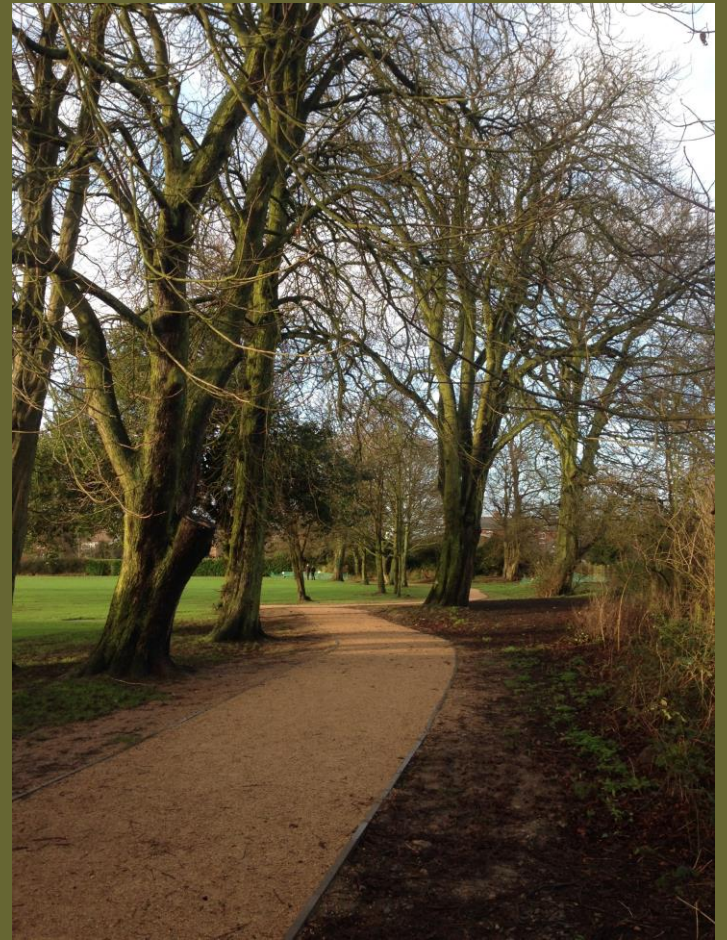
CONSTRUCTION BEGINS





FOUNDATIONS COMPLETE





THE FINISHED PATH





SANTA FUN RUN
(Nov 2015) &
ASHBY 20
(Mar 2016)



“HAVE A GO” ARCHAEOLOGY

This summer the Bath Grounds were a hive of archaeological activity. Anybody and everybody, both young and old, were “Having a Go” with archaeology.



Working with Mercian Archaeological Services, a Community Interest Company, resistance and magnetometer surveys were carried out to map archaeological features below the surface. Topographic surveys were used to highlight features not visible to the naked eye.

Introductory talks in April and May were followed by fieldwork sessions during three weeks in May, June and July (during the Festival of Archaeology), followed up by a results talk in September. Sessions were also held in local schools, enthusing children on the wonders of archaeology.

Over 120 people were involved. As well as learning a lot and having great fun, the results of the fieldwork carried out highlighted some interesting features that have now been written up for future generations.




Friends of Ashby Bath Grounds
Heritage project 2016

**‘Have a Go’
Archaeology**
on the Bath Grounds introductory talk
FREE EVENT


Wednesday 4th May, 7:30pm, Cricket Pavilion, Bath Grounds, Ashby de la Zouch.



This summer there will be an exciting free opportunity to ‘have a go’ at archaeology on the Bath Grounds. Learn how to carry out geophysical and topographic surveys and then have a go yourself and you might just find those buried archaeological remains! If you want to know more, why not come along to this introductory talk. You’ll get a chance to find out what is going on and ask questions.

FREE ARCHAEOLOGY ON THE BATH GROUNDS
Tuesday 17th May to 21st May
10am, 1:30pm or 5:30pm

This week will concentrate on resistance surveys, detecting and mapping high and low resistance underground anomalies which may relate to buried artefacts. There will be 2½ hour sessions, morning, afternoon or evening to choose from. Just come along to one session and see how you get on. You can always sign up for more if you like it; most people do!



Sign-up for both these activities at www.bathgroundspath.com or email bathgroundsfriends@gmail.com or phone 07525 338696



INTRODUCTORY TALK BY MERCIAN ARCHAEOLOGY (May 2016)





SETTING OUT THE GRID & TOPOGRAPHIC SURVEYS





RESISTIVITY SURVEYS





MAGNETOMETER SURVEYS





RAIN or SHINE



ARCHAEOLOGY RESULTS

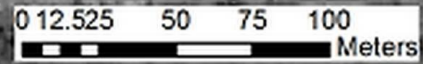
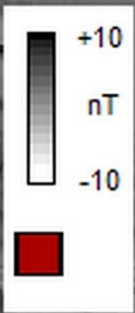
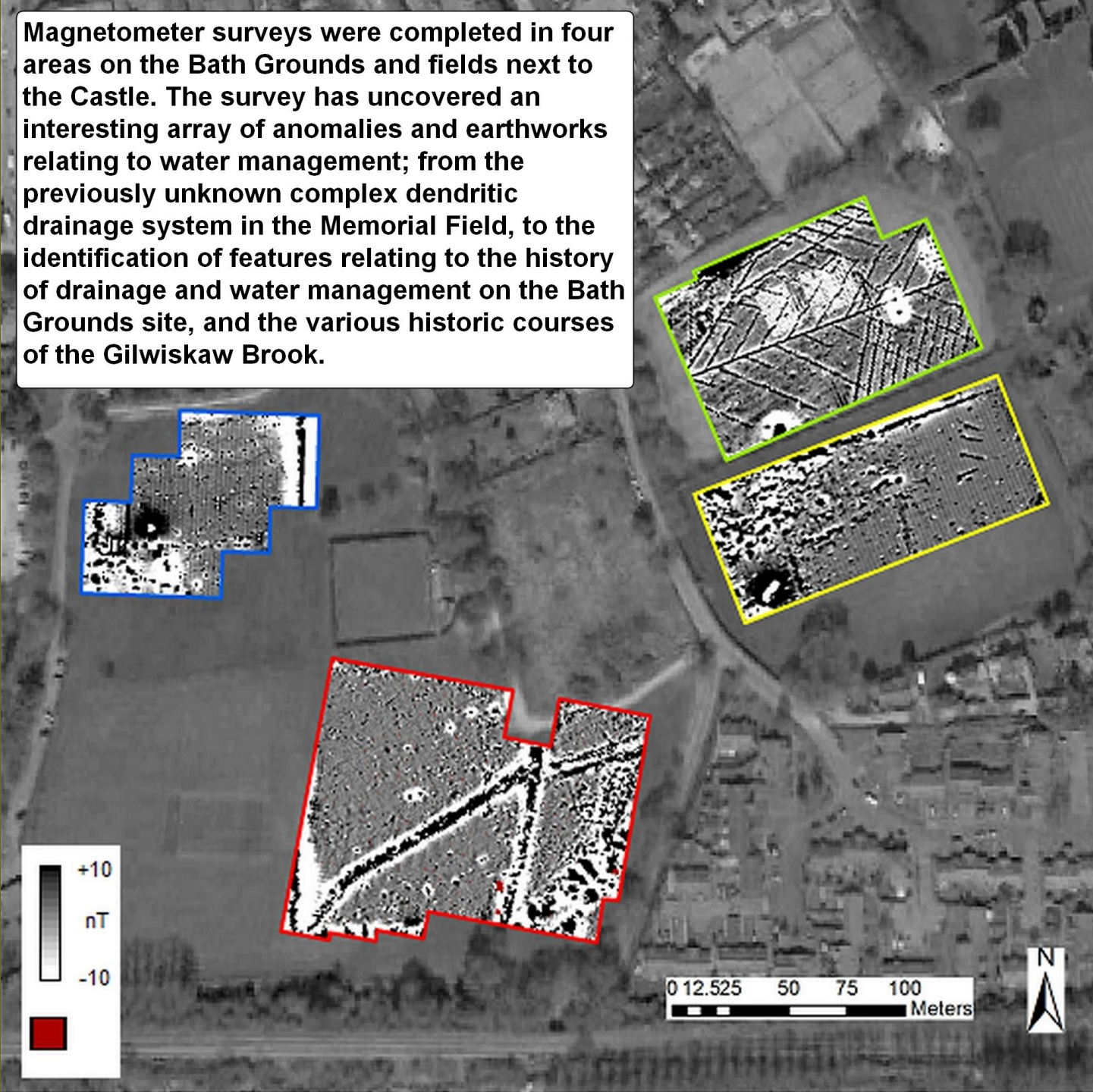
The Magnetometer and Resistance surveys on the Bath Grounds and neighbouring fields nearer the Castle revealed some interesting new insights into the archaeology of the area.

The relatively recent features, such as the Gilwiskaw culvert running across the Bath Grounds, were clearly visible in the surveys. But perhaps more interestingly, the location of the medieval fishponds to the east of the Bath Grounds were clearly identified and the scope and extent of the medieval Castle grounds were also detected.

The interpretation of the survey results is a skilled task. Mercian Archaeological Services, who led the survey work, are excited about what has been found and are keen to find out more. But more importantly, everybody involved really enjoyed the experience and wants to do more.

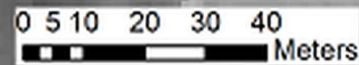
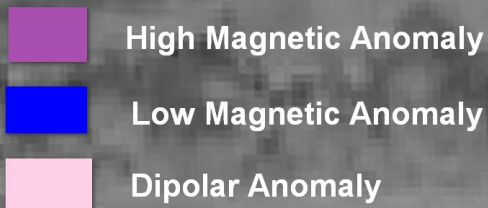
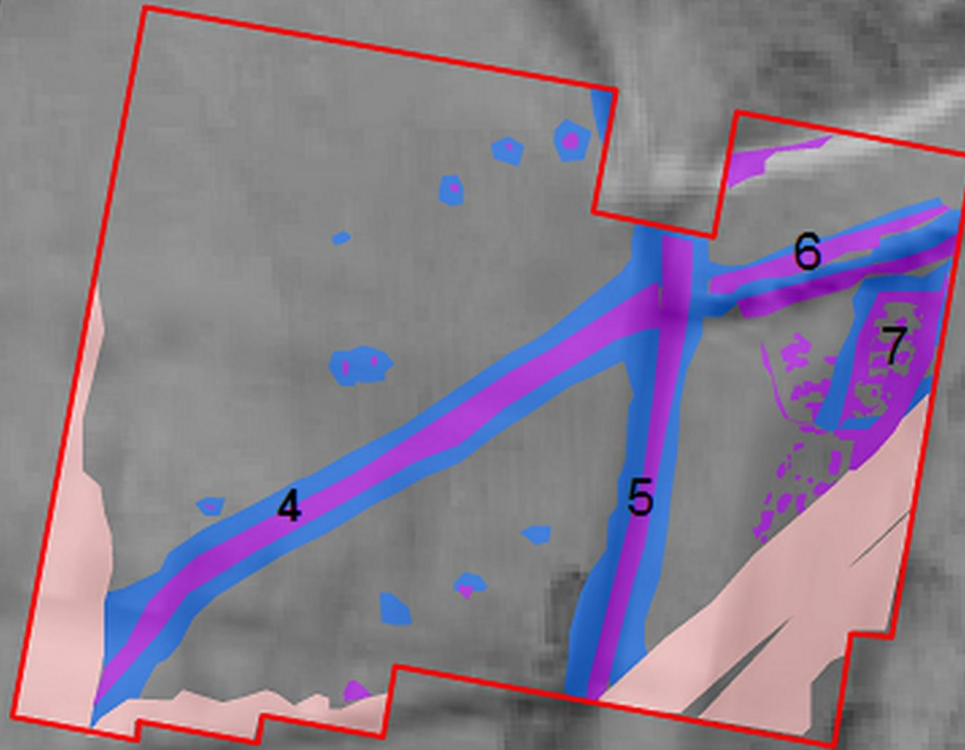


Magnetometer surveys were completed in four areas on the Bath Grounds and fields next to the Castle. The survey has uncovered an interesting array of anomalies and earthworks relating to water management; from the previously unknown complex dendritic drainage system in the Memorial Field, to the identification of features relating to the history of drainage and water management on the Bath Grounds site, and the various historic courses of the Gilwiskaw Brook.



Fishpond

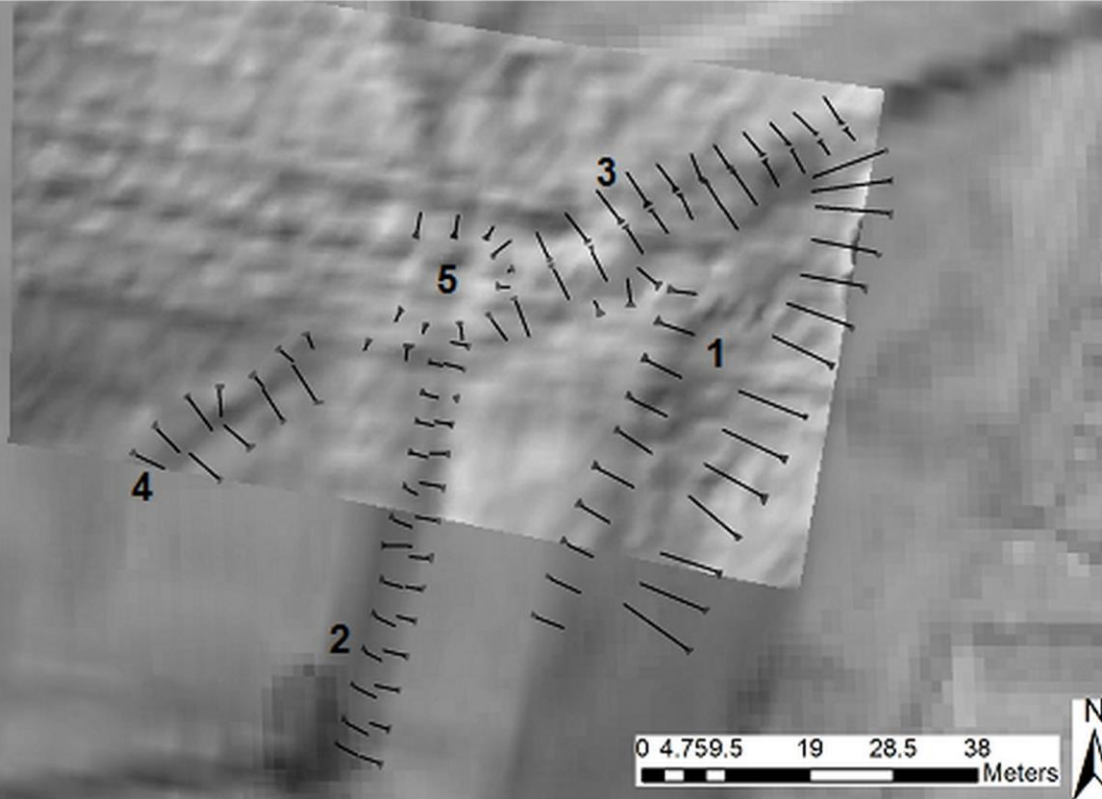
Interpretation of magnetometer results for red area overlain on to 1735 map and aerial photo showing medieval castle fishponds and former routes of the Gilwiskaw brook (4 & 5). Magnetic anomaly 7 aligns with the southern fishpond.



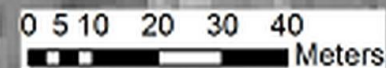
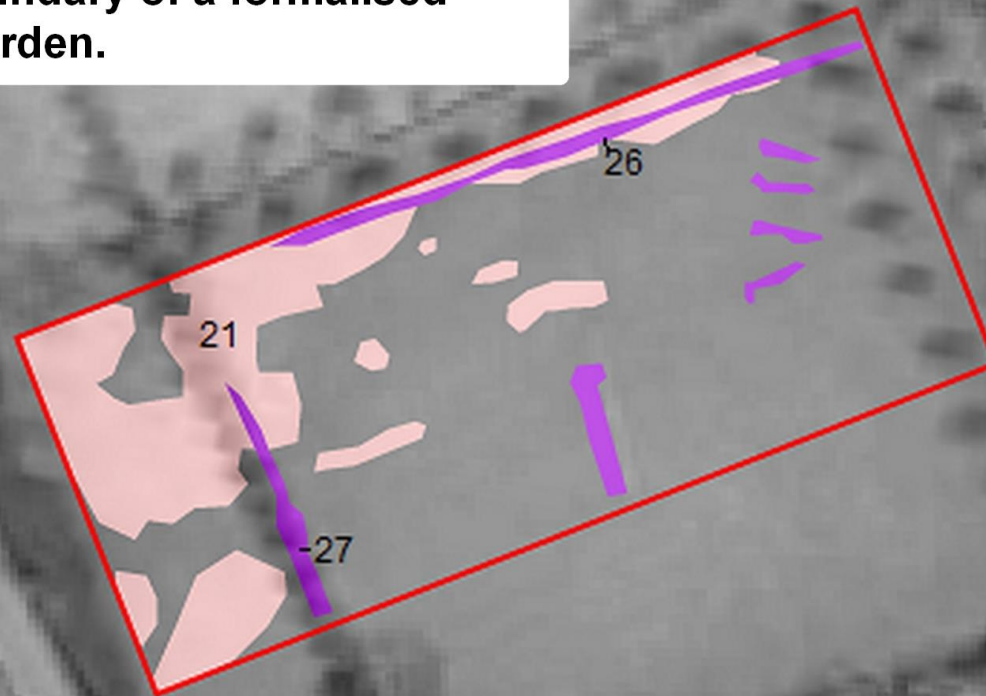
Fishpond



**Interpretation of topographic survey results for red area overlain on 1735 map and aerial photo.
Triangles on hacheurs at top of slopes. Feature 1 is a linear depression up to 0.4m deep probably indicating the infilled fishpond.**

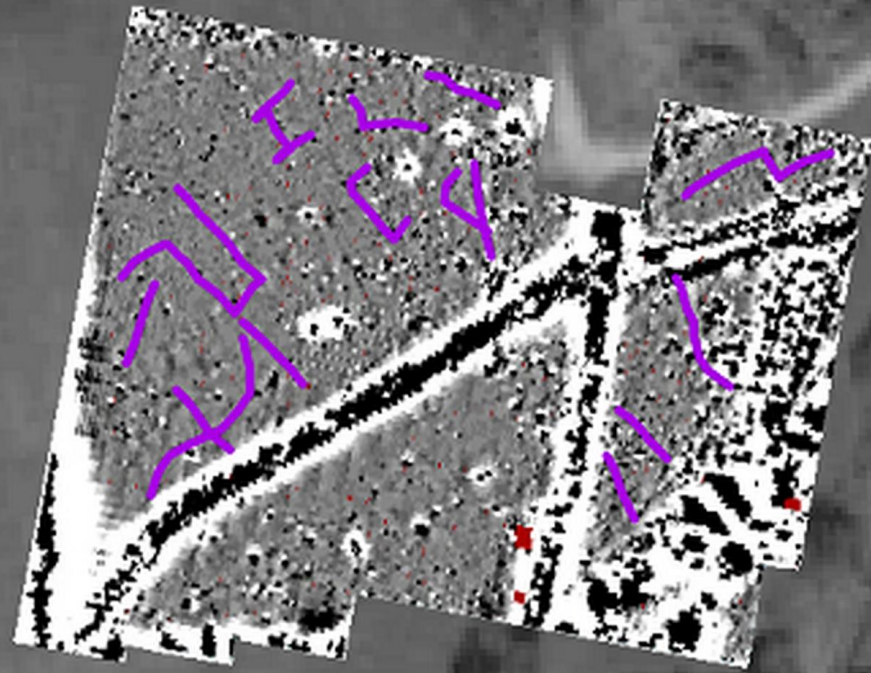


Interpretation of magnetometer results for yellow area overlain on 1735 map and aerial photo. The linear high magnetic anomalies possibly indicate infilled ancient ditches. Anomaly 26 seems to align with the row of trees leading to the fishponds on the 1735 map. Anomaly 27 aligns with the western boundary of a formalised medieval garden.





A number of very discrete linear and curvilinear features are visible in the magnetometer data for the red and blue areas. It is possible that they represent early land use. Their ephemeral nature makes them difficult to interpret and consequently they warrant further investigation.



ASHBY MUSEUM

A series of talks entitled “Ashby de la Zouch - The Spa Town” were given by Ken Hillier from Ashby Museum. Ken gave fascinating talks on the source of the spa water, the move of the spa from Moira to Ashby, the design, construction and use of the Ivanhoe Baths and the impact of the spa on the development of Ashby.

After each talk, Ken led a guided walk around the Bath Grounds, viewing the site of the Ivanhoe Baths, the site of the reservoir used to store the water and the elegant buildings developed for spa visitors to the town – Rawdon Terrace, Ivanhoe Terrace and Prior Park Houses.

As part of the project a new edition of the book “The Ivanhoe Baths and The Bath Grounds” was published, now including the history of the Bath Grounds since 1962.

The Museum also extended their range of Schools Education Boxes to include one on the Bath Grounds. The box includes two Edwardian children’s costumes for dressing up.



The Ivanhoe Baths and The Bath Grounds

ASHBY DE LA ZOUCH



KENNETH HILLIER



NEW BOOK;
WALKS AND TALKS





ASHBY SPA EDUCATION BOXES





CHILDREN FROM GRIFFYDAM PRIMARY USING EDUCATION BOXES





EDWARDIAN COSTUMES IN EDUCATION BOXES



ARTS FESTIVAL (MAY 2016)

The Ashby Arts Festival bank holiday weekend provided a focus for a wide range of community activities inspired by the Heritage Project. Large crowds also enjoyed the Gusto Food Fayre on the Bath Grounds.

Saturday lunchtime saw the performance of Lorna Titley's "Ballad of the Bath Grounds", featuring over 40 singers accompanied by massed ukuleles. Ashby's Mayor, Mike Ball, then unveiled the new Ivanhoe Baths mosaic, created by Llynda Baugh and Di Lorriman, followed by May Pole dancing. Throughout Saturday, Llynda supervised community mosaic sessions, where a Castle Fishponds mosaic began to take shape.

Elsewhere in Ashby, Pudding Bag Productions gave two packed showings of their award-winning project funded film about the Ivanhoe Baths, "Polkas and Pustules". View it at www.bathgroundsfriends.com.





Where people love to wander round, wander round

“BALLAD OF THE BATH GROUNDS” PERFORMANCE



The Ballad of the Bath Grounds by Lorna Titley (to the tune of Tavern in the Town)

Chorus (comes after each verse)

There is a special place in town, Ashby town
Where people love to wander round, wander round.
The historic spa's long gone, we're afraid,
But the Bath Grounds are our heritage, heritage.

Verses

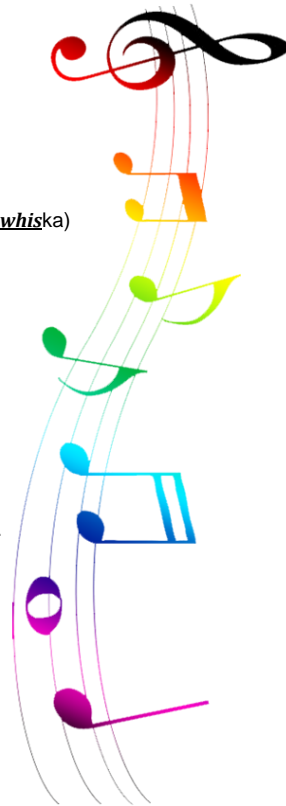
Rawdon Hastings built the facilities-
It was in the eighteen twenties -
And people flocked to Ashby for a cure, a cure.
Goodbye to pimples, blebs and boils and much worse,
Conditions we'd not dare to put in verse.
Now the spa's waters are all long gone,
But the River Gilwiskaw flows on – underground. (Gilwiskaw = Jilly whiska)

Dolly Shepherd came to Ashby
But her travel plans were risky.
She refused to take the Ivanhoe Line train – oh dear.
She parachuted bravely down, bravely down,
Hit her target in the Bath Grounds, Bath Grounds.
Though once she snagged her knickers on barbed wire,
An Edwardian lady to admire. (hold last note, no repeat)

There was cricket, there was croquet,
Tennis championships and race days
And the hunt and archers met on the Bath grounds. Bath Grounds.
Inside the dancing was divine, was divine.
Champagne was drunk and fine wines, fine wines.
And fireworks exploded in the sky,
But things were changing by and by. (hold last note, no repeat)

The Spa buildings were amazing,
Well signed and captivating,
But they started to fall into disrepair, disrepair.
Goodbye to the ballroom and the dome, to the dome.
Schoolboys made the place their home, their home.
But sadly they did not long remain,
Driven out by smelly the drains. (hold last note, no repeat)

Sadly now the spa is long gone
But – rejoice – the Bath Grounds live on
And remember that they're there to be enjoyed, enjoyed.
Cricket, bowls and picnicking, picnicking,
Playing ball and dog-walking, dog walking
And now we have a beautiful new path,
We say, 'What more could we ask?!' (hold last note, no repeat)





ASHBY MAYOR, MIKE BALL, WITH ARTISTS,
LLYNDA BAUGH & DI LORRIMAN, UNVEIL
IVANHOE BATHS MOSAIC





OH YEAH!
OH YEAH!





AND A MAYPOLE DANCE





COMMUNITY MOSAIC WORKSHOP FOR CASTLE FISHPOND MOSAIC





PUDDING BAG PRODUCTIONS' FILM
"POLKAS & PUSTULES" PREMIERED



JIM'S TRACTOR RUN (JULY 2016)

Three of the Project's proudest achievements were officially opened during Jim's Tractor Run and Fun Day on July 31st;

- A beautiful new Fish Mosaic, created during a series of community workshops, was unveiled by Ashby Mayor, Mike Ball. It commemorates the Castle's medieval fishponds which were located nearby.
- The new footpath was officially opened when District Council Deputy Leader, Verge Richichi, cut the ribbon.
- The complete Bath Grounds Heritage Trail was opened by Heritage Lottery Fund regional committee member, Geoff Nickolds. The trail comprises five heritage interpretation boards, four numbered waymarkers and the two mosaics, installed on a circular route around the Grounds. A printed Trail Guide is available from the Tourist Information Centre and Ashby Museum or you can pick one up here. It can also be downloaded from the Friends' website.





MIKE & LLYNDA UNVEIL THE FISH
MOSAIC





FOOTPATH AND HERITAGE TRAIL OFFICIALLY OPENED





ADMIRING THE NEW HERITAGE TRAIL





THE HERITAGE TRAIL WAYMARKERS

