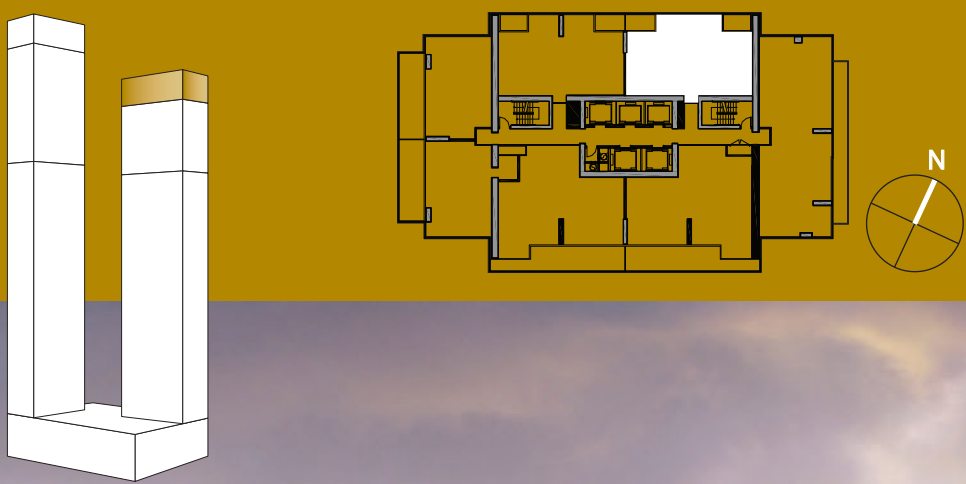


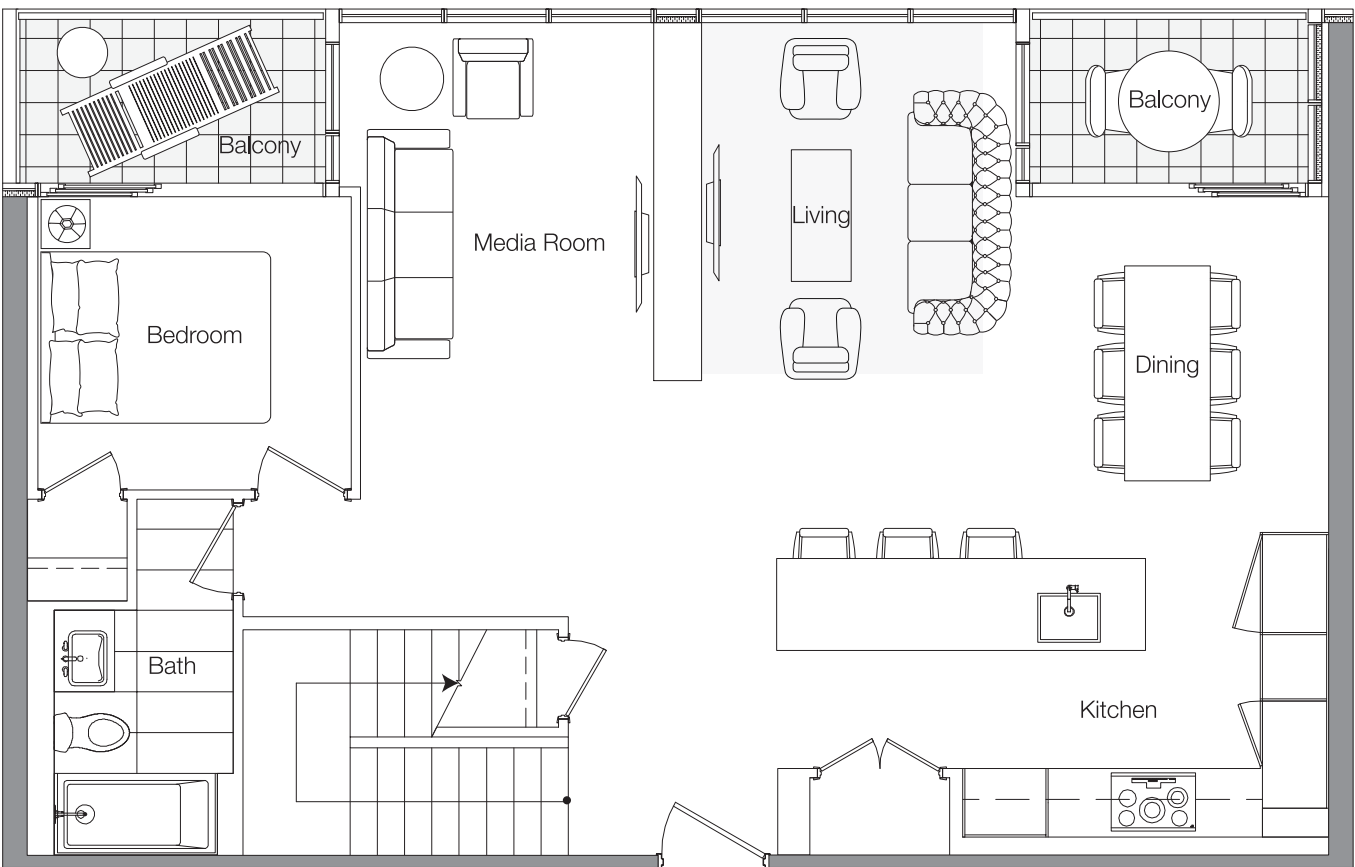
EAST  
TOWER

PH  
6701

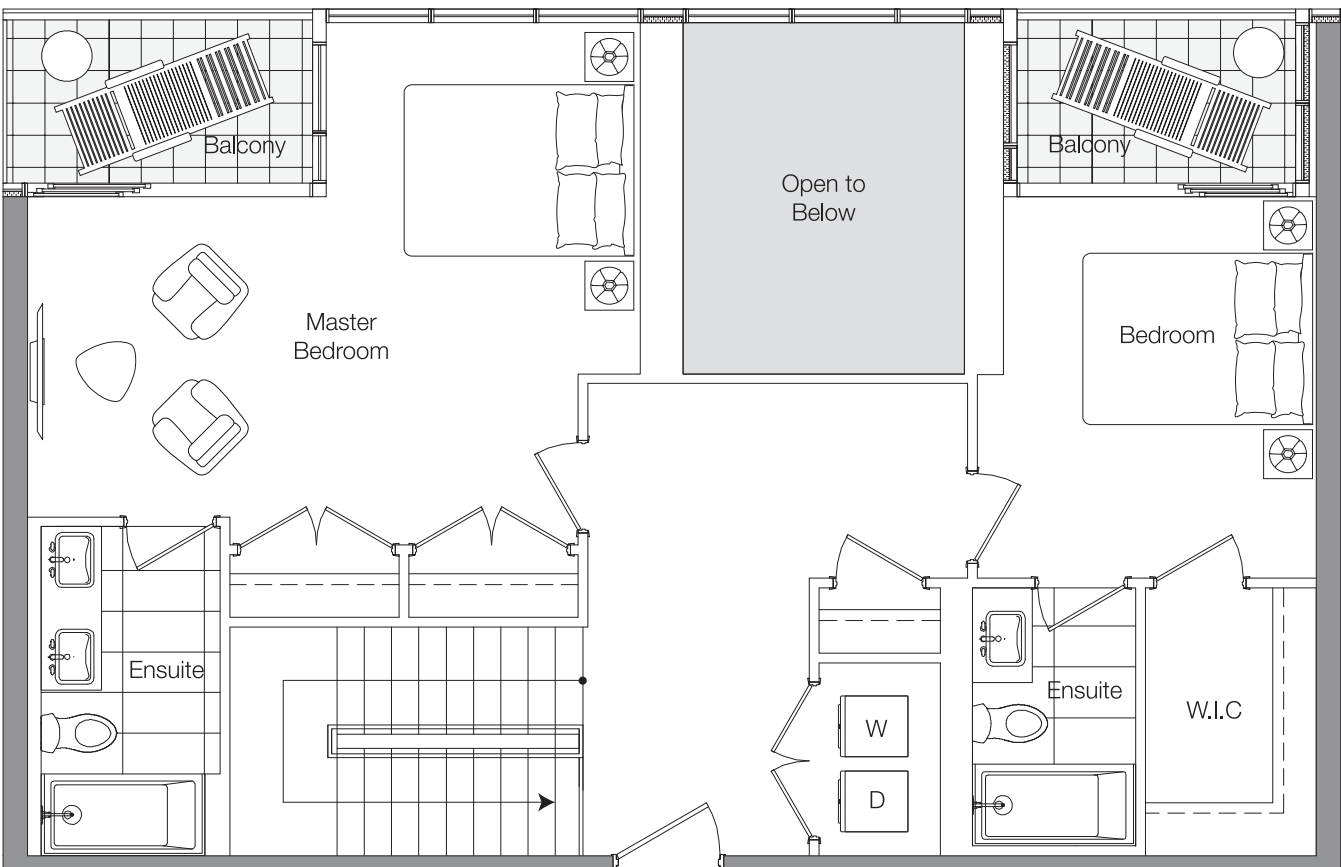


www.benchmarksignaturerealty.com

Lower Area: 1,042 SQ.FT.



Upper Area: 950 SQ.FT.



Actual suite interiors, exteriors and views may be noticeably different than what is depicted in photographs and renderings. The developer reserves the right to make modifications, substitutions, change brands, sizes, colours, layouts, materials, ceiling heights, features, finishes and other specifications without prior notification. Such details are governed by the applicable offer to purchase and agreement of sale, and disclosure statement. This is not an offering for sale. Any such offering can only be made with the applicable offer to purchase and agreement of sale, and disclosure statement. E. & O.E.

3 BEDROOM + MEDIA

TOTAL AREA 2,168 SQ.FT.	
1,992 SQ.FT. INDOOR AREA	176 SQ.FT. OUTDOOR AREA

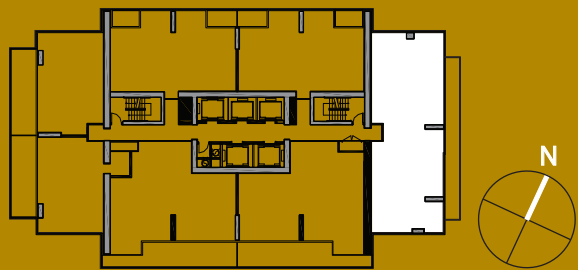
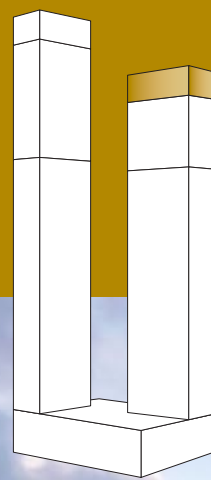


EAST  
TOWER

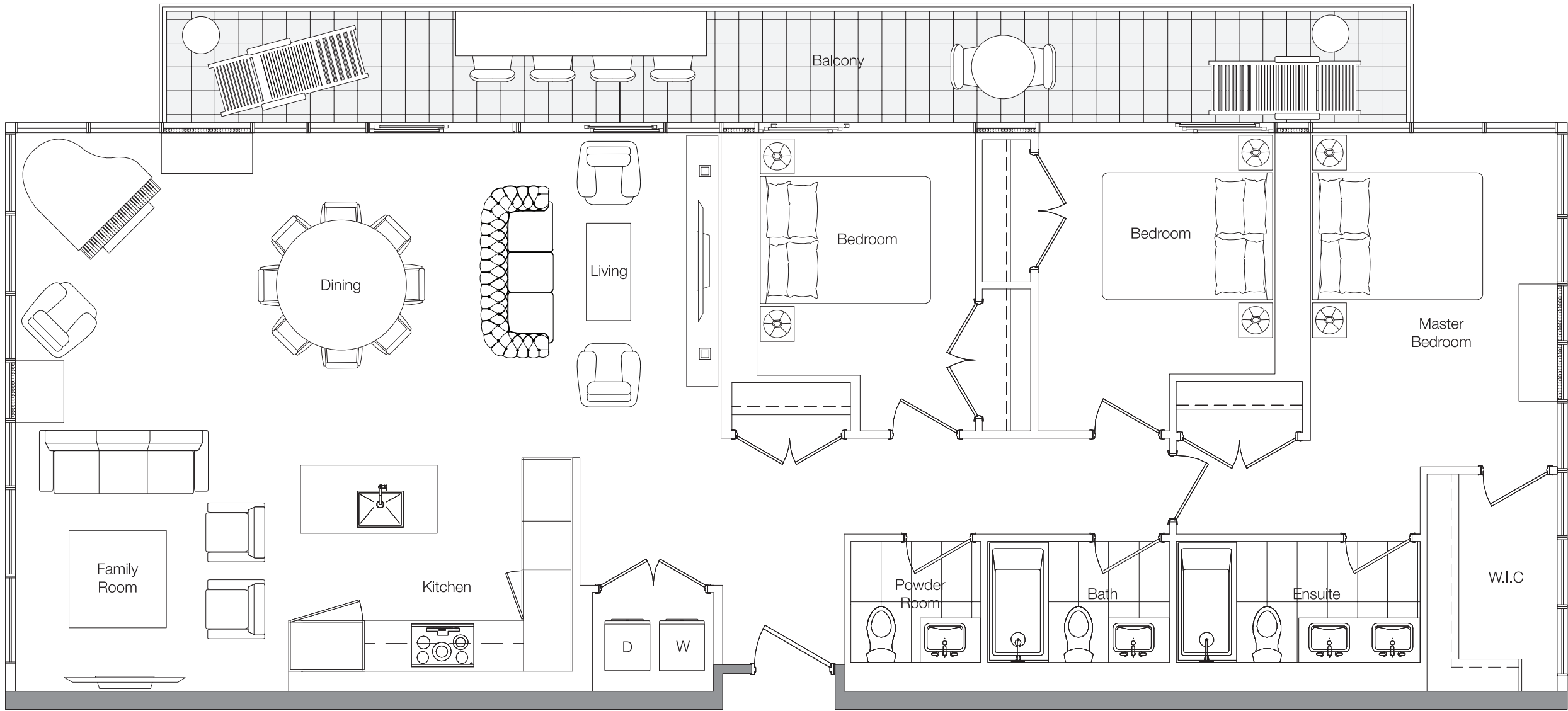
PH  
6702

|

SPH  
6601



www.benchmarksignaturerealty.com



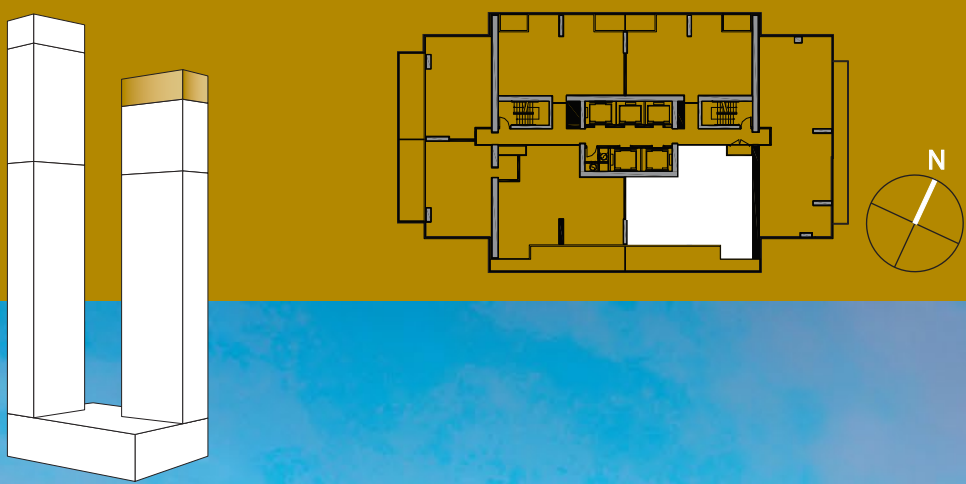
Actual suite interiors, exteriors and views may be noticeably different than what is depicted in photographs and renderings. The developer reserves the right to make modifications, substitutions, change brands, sizes, colours, layouts, materials, ceiling heights, features, finishes and other specifications without prior notification. Such details are governed by the applicable offer to purchase and agreement of sale, and disclosure statement. This is not an offering for sale. Any such offering can only be made with the applicable offer to purchase and agreement of sale, and disclosure statement. E. & O.E.

3 BEDROOM + FAMILY

TOTAL AREA 1,826 SQ.FT.	
1,590 SQ.FT. INDOOR AREA	236 SQ.FT. OUTDOOR AREA

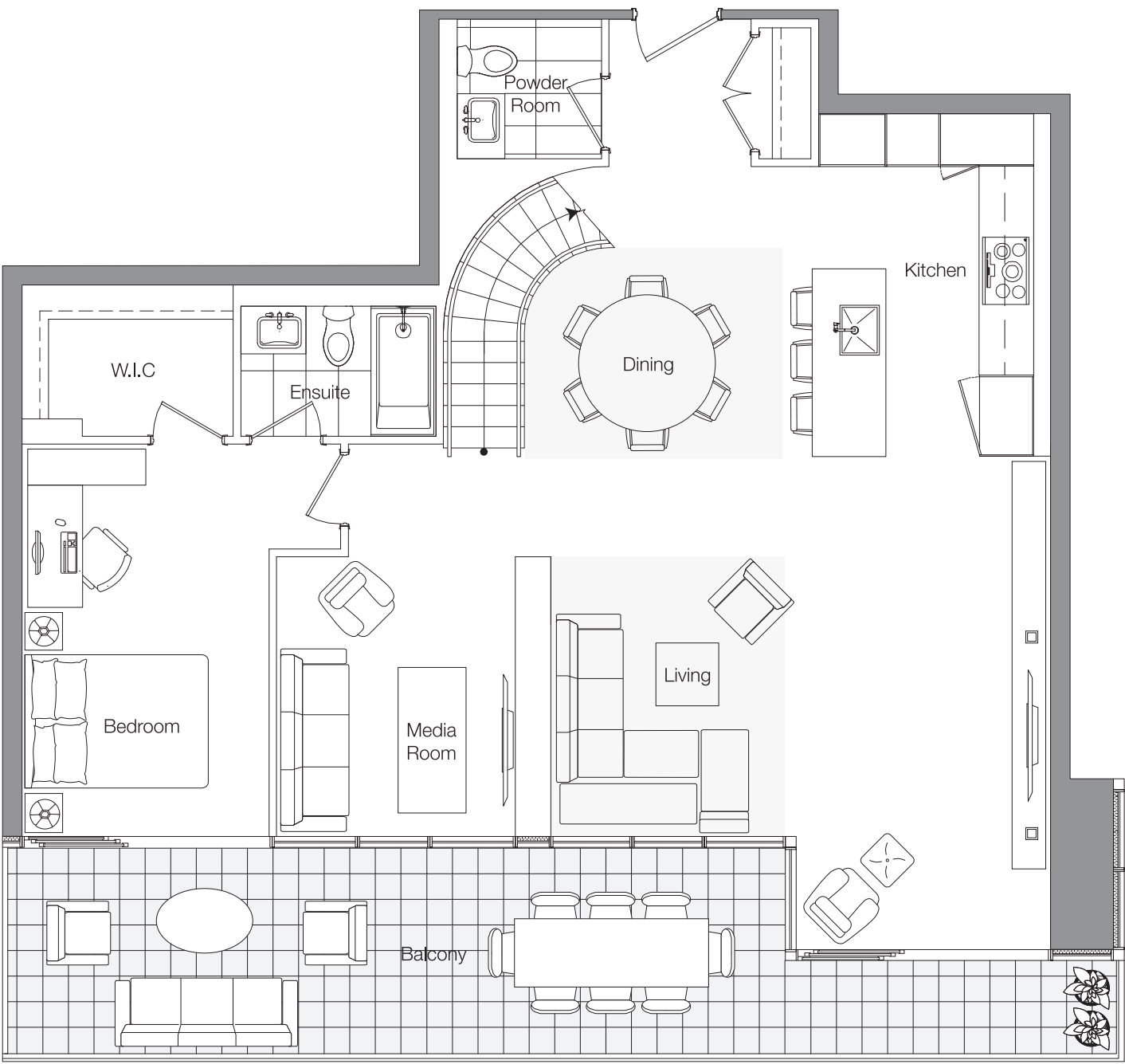


# EAST TOWER PH 6703

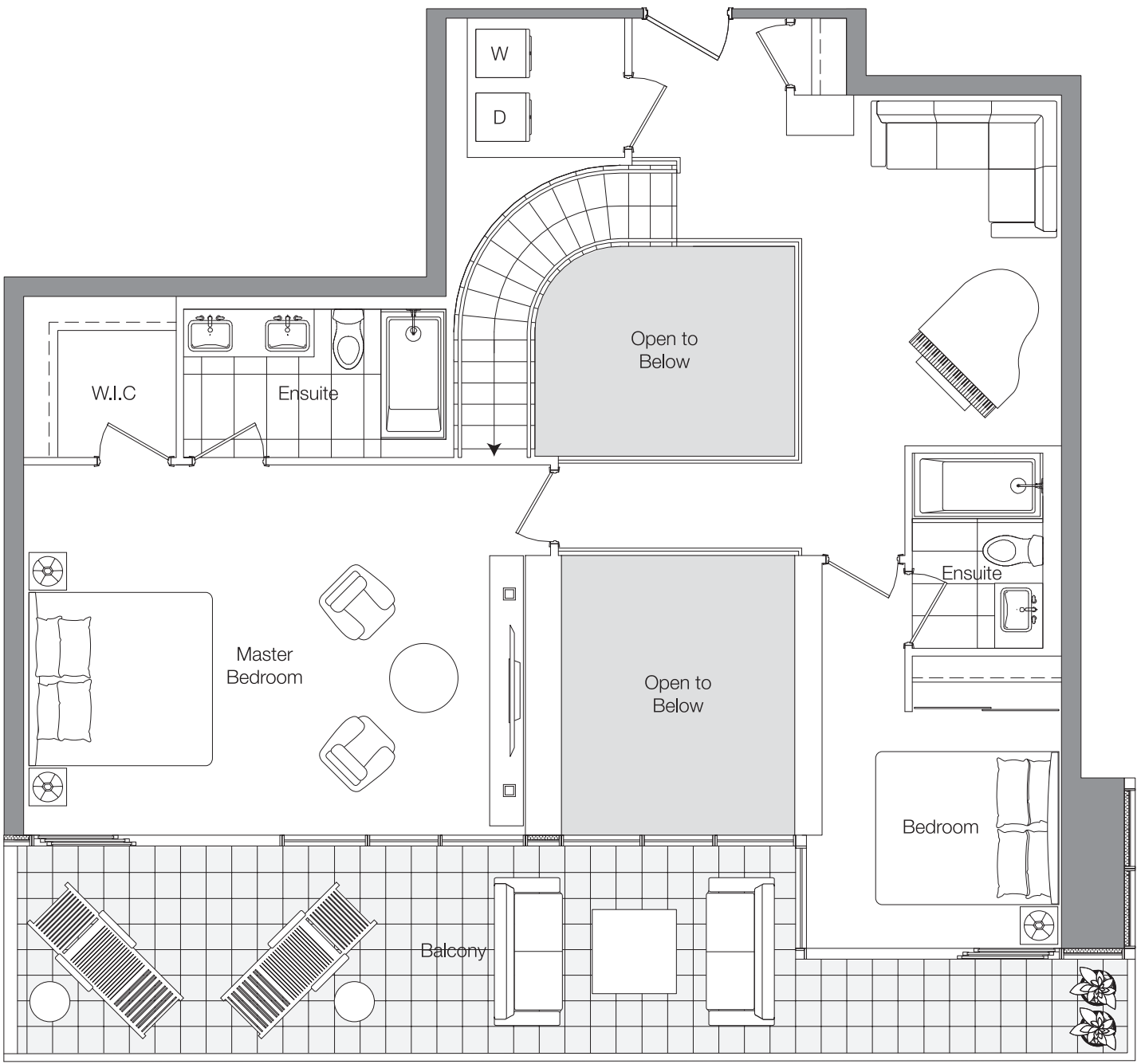


[www.benchmarksignaturerealty.com](http://www.benchmarksignaturerealty.com)

Lower Area: 1,238 SQ.FT.



Upper Area: 1,070 SQ.FT.



Actual suite interiors, exteriors and views may be noticeably different than what is depicted in photographs and renderings. The developer reserves the right to make modifications, substitutions, change brands, sizes, colours, layouts, materials, ceiling heights, features, finishes and other specifications without prior notification. Such details are governed by the applicable offer to purchase and agreement of sale, and disclosure statement. This is not an offering for sale. Any such offering can only be made with the applicable offer to purchase and agreement of sale, and disclosure statement. E. & O.E.

## 3 BEDROOM + MEDIA

TOTAL AREA 2,868 SQ.FT.	
2,308 SQ.FT. INDOOR AREA	560 SQ.FT. OUTDOOR AREA

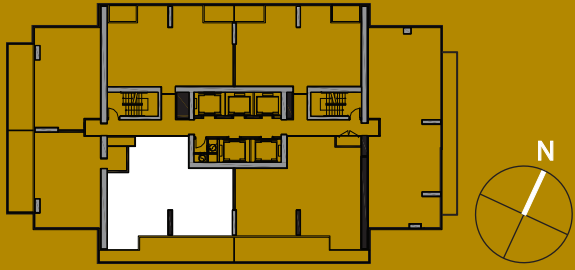
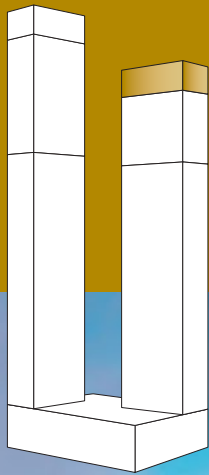


EAST  
TOWER

PH  
6705

|

SPH  
6602



[www.benchmarksignaturerealty.com](http://www.benchmarksignaturerealty.com)



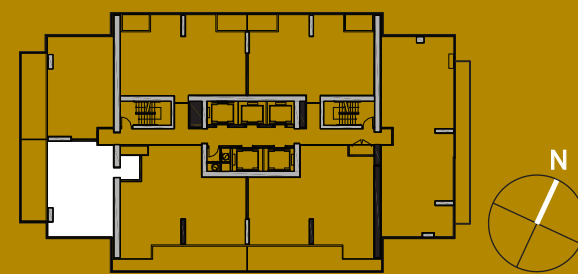
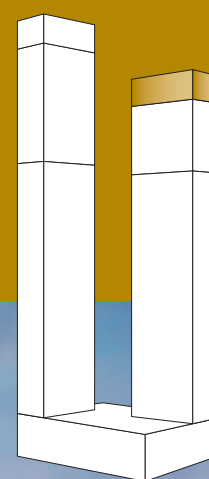
Actual suite interiors, exteriors and views may be noticeably different than what is depicted in photographs and renderings. The developer reserves the right to make modifications, substitutions, change brands, sizes, colours, layouts, materials, ceiling heights, features, finishes and other specifications without prior notification. Such details are governed by the applicable offer to purchase and agreement of sale, and disclosure statement. This is not an offering for sale. Any such offering can only be made with the applicable offer to purchase and agreement of sale, and disclosure statement. E. & O.E.

3 BEDROOM

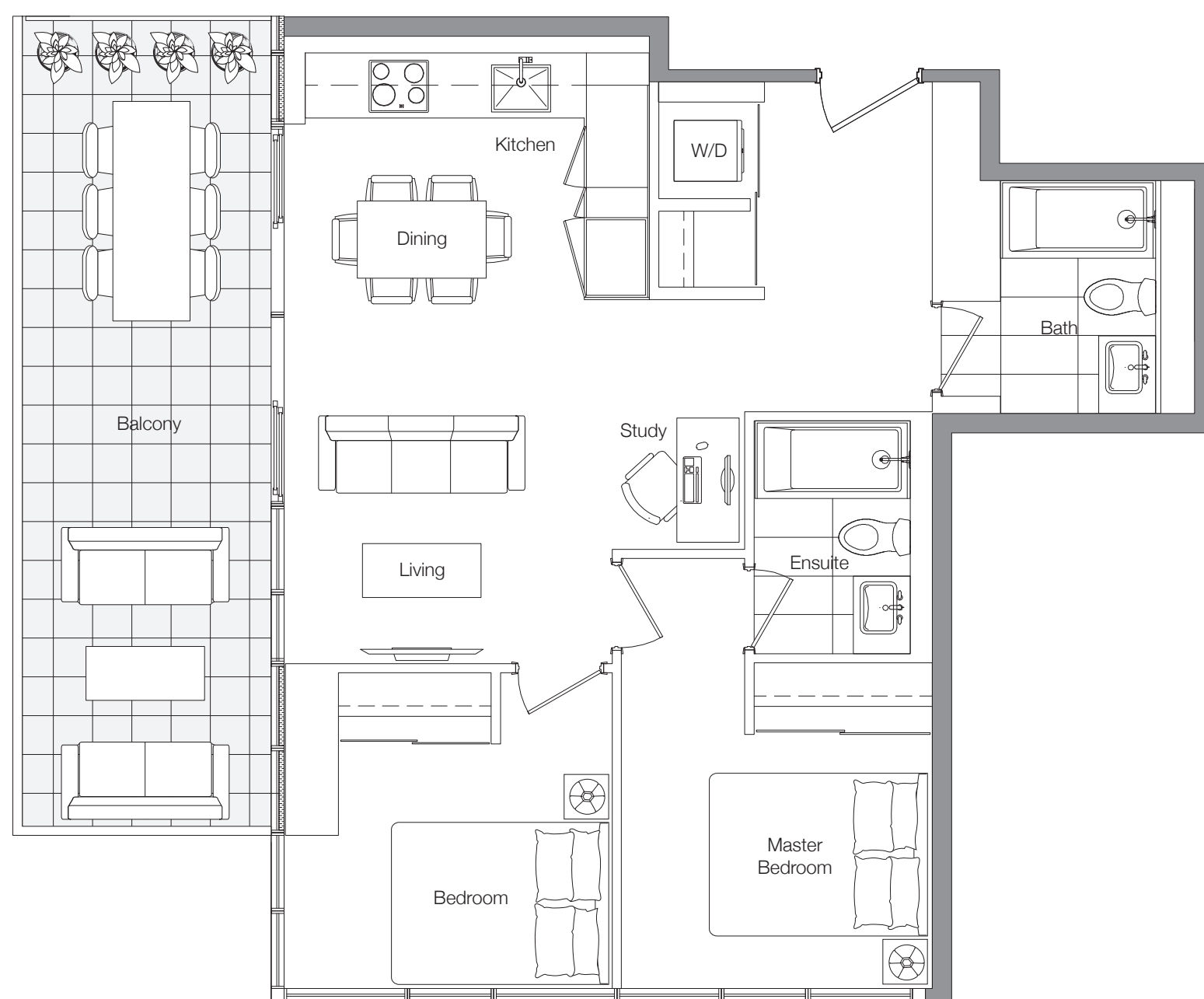
TOTAL AREA 1,478 SQ.FT.	
1,198 SQ.FT. INDOOR AREA	280 SQ.FT. OUTDOOR AREA



EAST  
TOWER PH 6706 | SPH 6603



[www.benchmarksignaturerealty.com](http://www.benchmarksignaturerealty.com)



Actual suite interiors, exteriors and views may be noticeably different than what is depicted in photographs and renderings. The developer reserves the right to make modifications, substitutions, change brands, sizes, colours, layouts, materials, ceiling heights, features, finishes and other specifications without prior notification. Such details are governed by the applicable offer to purchase and agreement of sale, and disclosure statement. This is not an offering for sale. Any such offering can only be made with the applicable offer to purchase and agreement of sale, and disclosure statement. E. & O.E.

2 BEDROOM + STUDY

TOTAL AREA 968 SQ.FT.

760 SQ.FT.  
INDOOR AREA

208 SQ.FT.  
OUTDOOR AREA

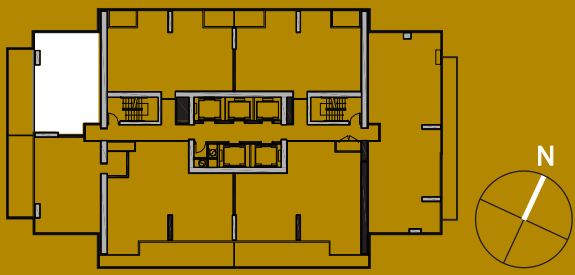
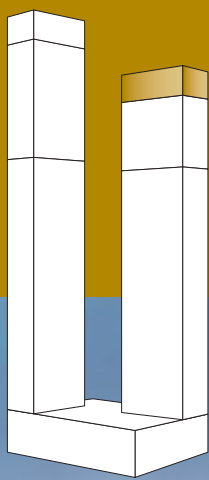


EAST  
TOWER

PH  
6707

|

SPH  
6605



[www.benchmarksignaturerealty.com](http://www.benchmarksignaturerealty.com)



Actual suite interiors, exteriors and views may be noticeably different than what is depicted in photographs and renderings. The developer reserves the right to make modifications, substitutions, change brands, sizes, colours, layouts, materials, ceiling heights, features, finishes and other specifications without prior notification. Such details are governed by the applicable offer to purchase and agreement of sale, and disclosure statement. This is not an offering for sale. Any such offering can only be made with the applicable offer to purchase and agreement of sale, and disclosure statement. E. & O.E.

2 BEDROOM

TOTAL AREA 935 SQ.FT.	
718 SQ.FT. INDOOR AREA	217 SQ.FT. OUTDOOR AREA

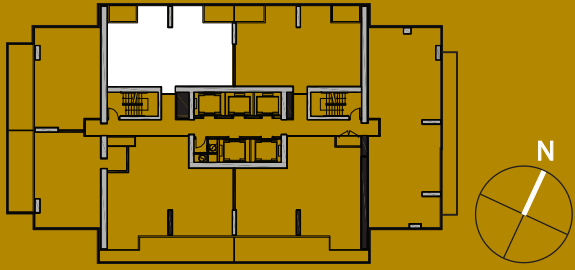
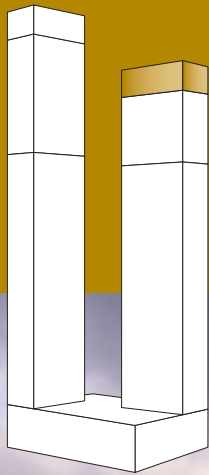


EAST  
TOWER

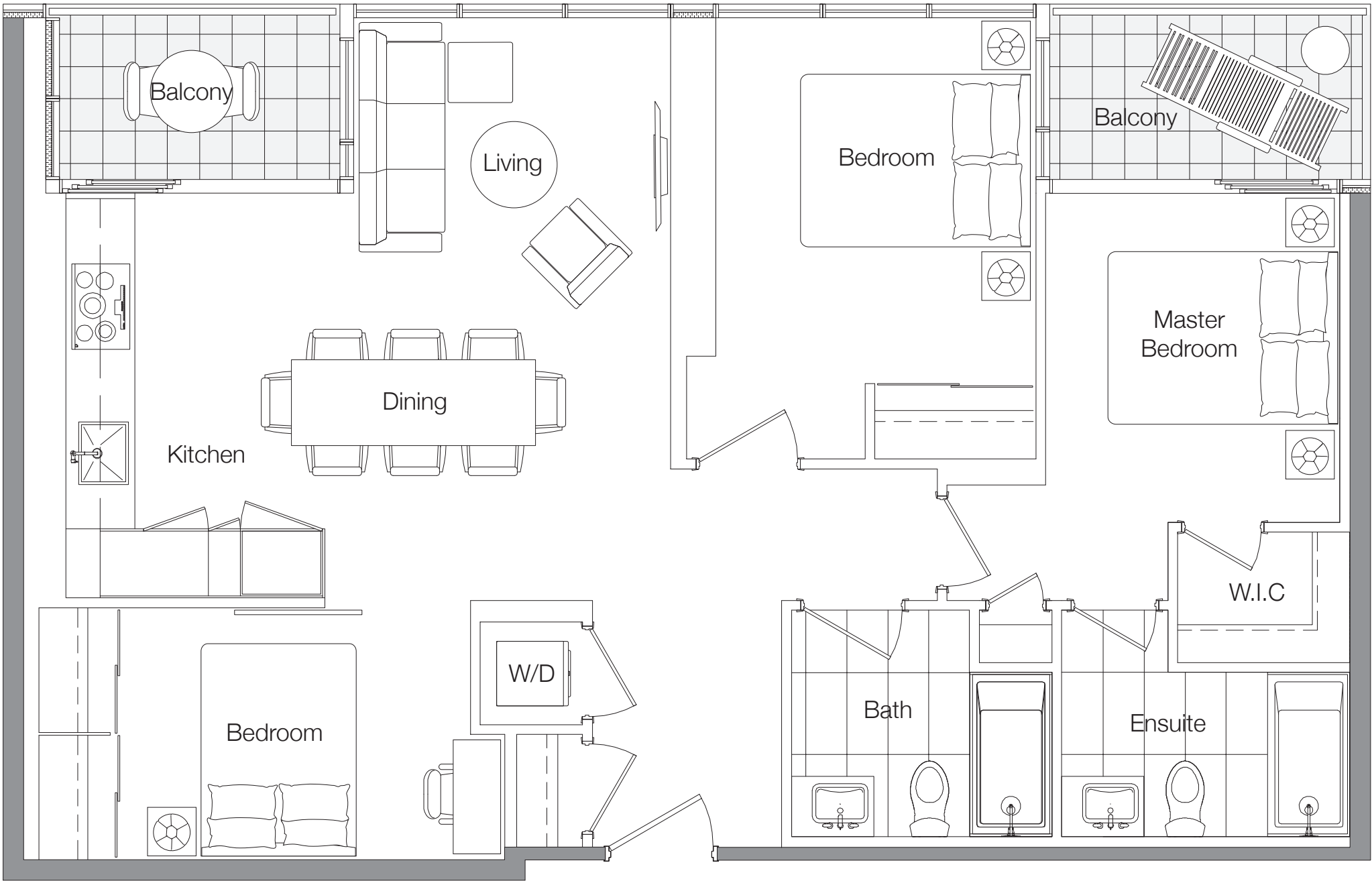
PH  
6708

|

SPH  
6606



www.benchmarksignaturerealty.com



Actual suite interiors, exteriors and views may be noticeably different than what is depicted in photographs and renderings. The developer reserves the right to make modifications, substitutions, change brands, sizes, colours, layouts, materials, ceiling heights, features, finishes and other specifications without prior notification. Such details are governed by the applicable offer to purchase and agreement of sale, and disclosure statement. This is not an offering for sale. Any such offering can only be made with the applicable offer to purchase and agreement of sale, and disclosure statement. E. & O.E.

3 BEDROOM

TOTAL AREA 1,126 SQ.FT.	
1,038 SQ.FT. INDOOR AREA	88 SQ.FT. OUTDOOR AREA