



WANAKENA HISTORICAL ASSOCIATION NEWSLETTER

The Wanakena Footbridge Is Back! Dedication & Celebration

INSIDE THIS ISSUE:

<i>Thank-You and Review of Reconstruction Funds</i>	2
<i>Bridge Construction July - August 2016</i>	2
<i>Wanakena Pennsylvania Roots</i>	3
<i>Message to WHA Non-Members</i>	5
<i>First Wanakena Postmaster</i>	6
<i>Message from the WHA President</i>	6
<i>Membership Form</i>	7
<i>Keepsake & DVD Order Form</i>	7

After many weeks of rain, July 4th turned out to be a perfect summer day for the dedication and celebration commemorating the rebuilding of the Wanakena footbridge. Excerpts from the Watertown Daily News article, written by Susan Mende describe the event beautifully:

=====

Under a sun-splashed sky, the rebuilt Wanakena Footbridge was celebrated during a dedication and ribbon-cutting ceremony that drew hundreds of community members [and visitors] to the shoreline prior to the [hamlet's] annual Independence Day parade. The mood was festive as young and old gathered to commemorate the event by listening to speeches, snapping photos and taking strolls across the wooden bridge which was decorated in patriotic red, white and blue banners. The large crowd broke out into applause several times.

The new span opened to pedestrians in November [11th 2016] and is 2½ feet higher above the river than the original. A six-sided kiosk was installed on the south shore bridge entrance that displays old photographs and describes bridge history [history, fundraising efforts, construction and recognition of donors & volunteers]. Generosity and determination from supporters kept the bridge project moving forward when faced with financial and other challenges. Mrs. [Sue] Westbrook said Wanakena success is a model that can be followed by other communities across St. Lawrence County and across the nation. "It's about heart, it's about perseverance and collaboration, This is about a community taking ownership of a project," she said.

County legislator Larry D. Denesha, R-DeKalb, said the rebuilding of the Wanakena Footbridge "speaks volumes in regards to the spirit, the enthusiasm and the overall can-do attitude that is so prevalent in this exceptional community." "When the original structure was destroyed by an ice jam in the winter of 2014, this community, while devastated by the loss, went to work. They did not wait for someone to offer them help," he said. "They rolled up their sleeves and they went to work and for three long years they worked toward this day. We would not be here today celebrating the completion and the dedication of the new Wanakena Footbridge if it were not for the indomitable spirit of this community along with the generous support from many others who have ties to this wonderful community."

Allen G. Ditch, president of the Wanakena Historical Association and co-chairman of the bridge fundraising committee, said it was impossible to thank all those who made the bridge replacement possible. He credited fundraising co-chairwoman Marsha Smith and Ron Capone, the association's treasurer, for their dedication. Mr. Ditch concluded with a quote from Margaret Mead, the late anthropologist and author. "Never doubt that a small group of thoughtful, committed citizens can change the world. Indeed, it's the only thing that ever has," he said.

=====

In addition, the Pinecone Grill sold Hot Dogs, bratwurst & drinks under a tent on the green (Z-Park). An art exhibition of Wanakena bridge art was on display in Otto's Abode and a 16 minute slide show on the history of the Wanakena footbridge was shown continuously in the Wanakena church.



To the delight of everyone, the annual July 4th Duck Race was re-initiated with the return of the footbridge finish line.

It's going to be a great summer in Wanakena as we have our iconic footbridge once again spanning the Oswegatchie.

THANK YOU — ALL



THANK YOU —- THANK YOU —- THANK YOU

The WHA is enormously grateful to the hundreds of individuals and families that donated to rebuild the Wanakena footbridge. We cannot convey enough appreciation to the many businesses and individuals, who donated their hard-earned dollars, as well as arts & crafts items, services, gift baskets and other items for the auctions and raffles. And last, but not least, we could not have done it without a small army of volunteers who planned fund-raising activities, worked at events, and oversaw grant requests as well as construction.

To date **\$441,000 has been spent to rebuild the footbridge**, with some additional costs still anticipated. The Clifton-Fine community, with the strong support of the Ranger School Alumni, raised over \$441,000. This astonishing accomplishment was recognized by county and state officials during the dedication celebration on July 4th.

Where the Dollars Came From:

\$271,000 was received through grants and gifts (with the largest grants requiring matching funds) from: NYS Office of Parks, Recreation and Historic Preservation; NYS Dept. of State Environmental Protection Fund Local Waterfront Revitalization Program; State & Municipal Facilities Capital Program (SAM) Dormitory Authority of the State of New York (DASNY); St. Lawrence County Industrial Development Agency, Local Development Corporation, St. Lawrence River Valley Redevelopment Agency; Northern NY Community Foundation; and The Damoth Fund (Adirondack Foundation)

\$185,000+ in cash was raised by the WHA with over 450 individual donors/families, as well as creative fund-raising events:

- \$31,031. The Westbrook Challenge (100 people challenged to donate \$250)
- >\$20,000. Raffles & Auctions
- ~\$16,0000. Memorial gifts
- \$7,591. Bossie Bingo games
- \$6,054. Money Jars & cash box for donations
- \$3,786. Bottle Return [*that's a lot of cans & bottles!!*]
- \$4,436. Souvenirs & Cat's Meow keepsakes of the Wanakena Footbridge
- \$2,224. Pie Auctions
- \$1,374. Baked Bean Contests, Cupcake sales , Lemonade Stands, the SOS 5-K Run, and more



The WHA recognizes this success as a true grassroots effort , where every single dollar was needed and appreciated. That said, the WHA wants to acknowledge seven very generous donors, who together donated over \$48,000 of the cash raised. A sincere thank-you to: Steven Moyer & Lester Allen; Paul Flynn; Barbara Slater; Bradley Alexandar; Anthony & Laurie Sorge; Carl Hoffman & Betsy Naumburg; and John & Sharon Sayles. Their gifts had a huge impact on our success and influenced others to donate and BELIEVE that the footbridge would definitely be rebuilt by the WHA and Clifton-Fine Community.

CONSTRUCTION July-November 2016

Wanakena residents and visitors were mesmerized watching the footbridge slowly being resurrected. When the bridge first opened for pedestrians on Nov 11, 2016, the community once again felt whole. Wanakena had its Eiffel Tower back.

A 16 minute DVD was produced by the WHA that depicts a short history of the bridge, including: prior to destruction; the destruction by the ice jam; dismantling; fund-raising; and construction.

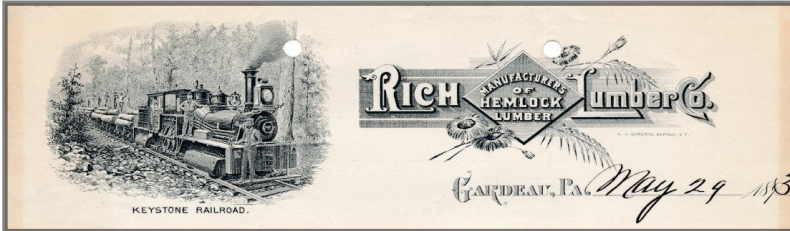
On July 4, the video was running all day at the Wanakena church to very positive reviews. A copy is available to view at Otto's Abode in Wanakena. And there are extra copies for sale at Otto's Abode.

Copies can be ordered using the form on page 7 of this newsletter.



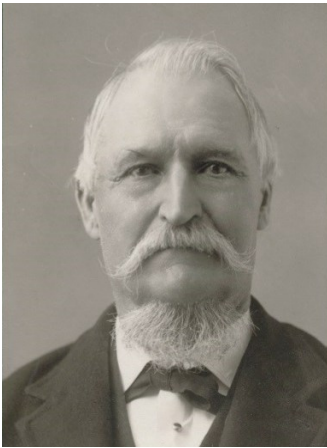
WANAKENA'S PENNSYLVANIA ROOTS: The Rich Lumber Company in McKean County, Pa. Part 1: Gardeau

By: Jack Williams



Rich Lumber Co. Gardeau, Pa. Letterhead
Courtesy of Jim Kempfer, Emporium, Pa.

IN THE BEGINNING, the little Northern Pennsylvania valley known as “The Great Elk Lick” was thick with virgin white pines and hemlocks – like it's neighboring areas to the East and West. But in 1826 the famous Pennsylvania hunter, Col. Noah Parker, started a farm and named the little valley “Gardeau,” after his Indian guide. While the Pennsylvania oil boom was exploding 100 miles to the West, just 70 miles Northwest of Gardeau, Pa, the Rich family had been busy in business and public service in



Noah H Parker
Cameron County HA

Cattaraugus County, NY. A son, Herbert C. Rich, arrived in 1851. Frank Goodyear had been born two years earlier in Buffalo – 40 miles further North. William L. Sykes was born eight years later – 25 miles Southeast of Gardeau.

PENNSYLVANIA was rich in oil, coal, and timber, and its northern tier McKean County was part of the lumber capital of the world. Noah Parker drilled for oil in 1865, struck mineral water instead, and in 1888 Parker built the Gardeau Mineral Springs Sanitarium Hotel and Spa. Parker also started a sawmill. Elsewhere, twenty three year old Frank Goodyear had taken the plunge into lumbering by purchasing in 1872 his first Pennsylvania warrant. By 1890 he had 128,000 acres surrounding

Gardeau, PA, and his Austin mill, seven miles East, was producing over 50 million feet of lumber a year – the largest operation in Pennsylvania, and perhaps the world. William Sykes purchased his first warrant in 1883 and in 1890 his Keating Summit hardwood mill – five miles North of Gardeau – was producing 30,000 feet per 11 hour shift. He formed the Emporium Lumber Company in 1892 and added large mills in nearby Galeton and Austin.



Parker Sanitarium and Spa is on the right.

From the lost Dora Sizer Album
Courtesy Anne Mulhollan and Liisa Duerig-Laitinen



WNY&PARR passenger train in Clermont, PA
Courtesy of Clermont Website and Reunion 2000

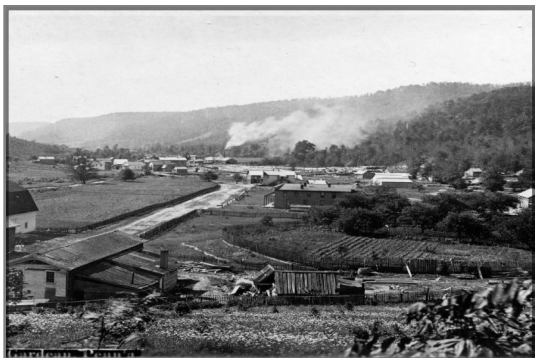
THROUGH IT ALL, the Buffalo, New York and Philadelphia Railroad (Western New York and Pennsylvania Railroad after 1886) and its branch started in Buffalo, ran near the Rich home in Cattaraugus, through Goodyear's PA holdings, through Sykes' Keating, PA operation, and through Noah Parker's Gardeau into Emporium, PA – a growing railroad hub and milling center.

HERBERT C. RICH was busy. He was a founder of the Bank of Cattaraugus and later became its president, was heavily involved with the family hardware store, and lumbered near home. He could use the BNY&PH Railroad to investi-

gate business opportunities, and the ride South to Emporium was an obvious commute. He could easily have met Frank Goodyear on the train. Herbert C. liked what he saw because he and his older cousin, Horace Clarence, bought 1200 acres of logging warrants in 1886, and in 1890 spent \$37,000 (\$1,000,000 in today's dollars) to purchase an

additional 2800 acre warrant along Parker Run in Gardeau, PA. The cost of their other land dealings is not recorded, but \$13.50/acre (\$329 in today's dollars) was the typical price.

IN THE PROCESS they adopted Frank Goodyear's business model. They rented Noah Parker's sawmill for an up-front fee plus \$40/day (\$1,000/day in 2017 dollars) and hired the Ford brothers from Cattaraugus to run it. They hired men they needed, expanded the village, and laid tracks along Parker Run and into the valleys further West. They acquired 4,841 more acres in 1893; their total 8,742 acres cost \$3,000,000 in 2017 dollars. Mr. L.G. Wilson managed the new Rich Lumber Company and Keystone Railroad because the Rich cousins never lived in Gardeau. GARDEAU was a busy, noisy place. The rented sawmill in 1892 was sawing logs moved by one Shay engine from 4000 mountainous acres. It could produce 2,000,000 feet of lumber a month when it ran 22 hours a day. The mill burned in 1893 and was replaced with a



Gardeau Sawmill (background) & Parker farm (foreground) circa 1887 (McKean County Historical Soc.)



Keystone Railroad's "Big Trestle" 1898 (courtesy of Sue Smeby)



Rich and Andrews Store 1890 (Jim Kempher)

mill that could cut from their additional warrant 75,000 board feet in eleven hours. They built a 300 foot, 65 foot high trestle and purchased two new Shays a year later. The mill burned again in March, 1897 and was replaced.

A GARDEAU OLD TIMER interviewed by "The Bradford Era" in 1950 said, "Gardeau had a meat market, livery stable, a company store, a shoe shop, a church, about eighteen homes, and a Pennsylvania Railroad station." He also stated that Noah Parker had a park behind his house and a bedroom full of mounted animals – many killed in the Adirondacks. He



Skating on Pond – Gardeau, PA Dec 1897
Courtesy of Anne Mulhollan and Liisa Duerig-Laitinen



Rich Lumber Company Mill After Fire, Gardeau 1894.
Courtesy of Jim Kempher

forgot to mention the mill and lumber yard, the Parker farm, Parker's three story Sanitarium and Spa (destroyed by fire in 1898) , a bath house, the mineral springs, a Shay engine maintenance shed, possibly a second hotel, a bottling works, a fishing pond, Parker's new mausoleum, and "tourists" taking Parker's mineral water cure. One wonders if they had a fire house.

NOAH PARKER died in December, 1897, willing his very young wife a cow, use of the house, and a small stipend. He was not buried in his mausoleum. The Parker Sanitarium burned to the ground in 1898, the same year the Rich Lumber

Company moved 25 miles West and established the new village of Granere. In 1901, 75 “Italians” were cutting paper wood in Gardeau, and in 1913 the Pennsylvania Railroad was no longer stopping at the Gardeau station. In 1920 the Altoona Mirror reported that Parker had actually found near Gardeau the buried treasure of a sea pirate named Captain Thomas. The story continues to be repeated today – occasionally drawing treasure hunters. In 1930 boxing heavy-weight crown contender Napoleon Jack Dorval set up his training camp for a season in Gardeau.

TODAY, Gardeau is a small collection of hunting camps, mobile homes, the old church, some abandoned farms, and the crumbling mausoleum of Noah Parker. A Pennsylvania Railroad train occasionally travels the old route of the WNY&PA Railroad. With help, one can find a few old foundations and a mineral spring.



Gardeau - Parker Mausoleum and Home in Foreground, Sawmill in Background— circa 1890.

Courtesy of Jim Kempfer

Anyone willing to share



Col. Noah Parker's Mausoleum in 2016. Provided by Jack Williams

logging era photos of the Rich Lumber Company in Gardeau, Granere, or in Wanakena, please contact Jack Williams at 814-861-8637 or packjac2000@gmail.com.

Information for this article was contributed by Thomas Taber (“Logging Railroad Era of Lumbering in Pennsylvania, 1971”), Lanty Phillips (Gardeau), the McKean and Cameron County Historical Societies, online historical websites, archives of local newspapers of the era, Connie Frederick, Brian Snyder, and Joe Szymanski.



NOTICE TO NON-MEMBERS OF THE WANAKENA HISTORICAL ASSOCIATION

The WHA Board of Trustees, agreed in 2014 that anyone who donated to the fund to rebuild the Wanakena footbridge would remain on the WHA newsletter distribution, until we celebrated its reconstruction. With a distribution list of over 600, we must start removing names of individuals whose ONLY tie to the WHA is a donation to the footbridge fund.

Individuals who may have let their membership expire, but were members at any time, will continue to receive the WHA newsletters. Hopefully this newsletter will be a reminder to renew your membership in the WHA. Each recipients membership status should be indicated on the address sticker of this newsletter. If there are errors in your membership status, just let us know, by sending an email message to wanakenaha@aol.com.

Individual annual membership is only \$10 and a 3-year membership is \$25. Lifetime memberships remain at \$100.

If you would like to continue receiving information on Wanakena history and WHA planned events, please complete the membership form on page 7 and mail to the WHA (address on the form).

George H Bullock:

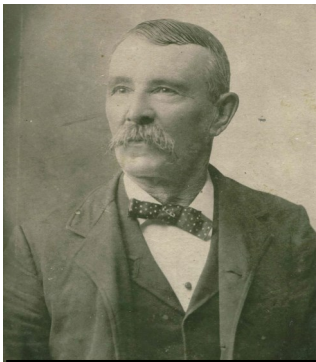
First Postmaster of Wanakena, NY

By: Allen Ditch



In early 2016 the WHA received a message via Facebook inquiring about our interest in a family album that was originated and preserved by Sarah Bullock, the wife of George Bullock, the first Postmaster for Wanakena. Our answer, was a resounding “Oh Yes”! The WHA is extremely grateful to Judy Stewart for thinking of sharing this precious witness of Wanakena history, instead of breaking it into pieces and losing it forever. Judy Stewart is the great-granddaughter of Sarah & George Bullock, and the granddaughter of Maude Bullock-Fox and Edward Fox, who built the ‘Foxes Den’ located at the South side of footbridge walkway. The Foxes den is now owned by Bradly Alexandar, who granted the WHA a prime location to erect the new kiosk depicting the history of the footbridge. Ms. Stewart generously shared some of her memories of Wanakena, as well as some extraordinary history of Bullock family.

THE POSTMASTER & HIS FAMILY



George H Bullock ,
Wanakena Post-master,
1902-1912

George Harrison Bullock was born on March 3, 1834 in Belvidere NY and died August 23, 1915 in So Bradford PA. He married Sarah E Burrows on Oct 13, 1915 (Feb 20, 1844 – Oct 13, 1931). During the Civil War, George enlisted in Company “I”, 27th Regiment of the NY Infantry Volunteers and was honorably discharged May 31, 1863. He served under Curtis G Gardiner and was in the first Battle of Bull Run, the battle of Fair Oaks and the 7-day battle for Richmond among others. The US Postal Service website documents that George Bullock became the first postmaster in Wanakena on September 12, 1902, serving in that capacity until November 19, 1912. Ada Hamele (wife of Otto J Hamele) became Post Mistress and held that position until Dec 31, 1928.



George Bullock and his granddaughter Madge Bullock (Fox) on the porch of the Post Office in Wanakena, circa 1906. Name of the man on the left is unknown.

The building that was the original post-office is now a residence located on the corner of Front and Second streets. The exterior of the building hasn’t changed much over the last 115 years, with an addition on the left side that used to house Thumper Press. I’m sure that George & Sarah would be flabbergasted at the upgrades and amenities available on the inside of the home.

George & Sarah had 4 children Jessie, Delbert, Fanny (who died at 3 months) and Maude. Maude Bullock (Judy Stewart’s grandmother) married Edward Frank Fox of Fine NY (believed to be a logger); their son, John E Fox built Foxes den with his father, Edward Fox. Foxes den was sold by their daughter (also Madge —see picture) in 1964.

George Bullock’s grave in Degolia PA (near Bradford PA) is marked with a Grand Army of the Republic for his Civil War service. George Bullock’s genealogy has been traced back to Colonel William Bullock (revolutionary war) and still further to Steven Hopkins, who arrived in America on the Mayflower!!

THE FAMILY ALBUM



All of the students in front of the Old Wanakena schoolhouse, circa 1908.

Ms. Stewart explained that Sarah Bullock sold postcards at the Wanakena post-office to bring in some extra money, and she meticulously kept a copy of each card that she sold in a the photo album. This collection includes 178 postcards. Although many of the postcards were already known to the WHA, the album also includes quite a few that are not in our archive (digital or original print). In addition to images of Wanakena in the early 1900’s, there are postcards for Oswegatchie, Cranberry Village & Cranberry Lake dam, and Benson Mines. The album contains a number of family photos and early pictures of Foxes Den. The contents of the album have been digitized so that the images can be reproduced or displayed using a projector.

If you have or know of historical photos, artifacts or stories and would like to add them to the Wanakena Historical Association archives, please contact any of the trustees (listed on the address side of this newsletter) or send an email to wanakenaha@aol.com

MESSAGE FROM THE PRESIDENT:

ALLEN DITCH



I want to extend my gratitude and thanks to Marsha Smith, who was elected President of the WHA in September 2013, four months before the catastrophic ice-jam that took out the Wanakena Footbridge. Marsha agreed to accept the role, when the duties and responsibilities were primarily to maintain the Walking Tour, rebuild the Wanakena Library, and continue adding historical information to the archives. Marsha, along with other volunteers, was always available to give her time and talents to raise awareness of the support needed to rebuild the footbridge. Little did she or the WHA trustees realize on January 14, 2014 that at least \$441,000 would be needed to complete the project. So, Thank-You to Marsha and the small army of volunteers for your dedication and perseverance for seeing the project through to completion.

Now it is my job, along with the dedicated Board of Trustees to continue the momentum going forward to focus on keeping the history and heritage of our unique hamlet in the forefront and to revisit the idea of finding a way to display the artifacts and archives of the WHA for the general public. Sue Smeby, WHA Secretary, has been in touch with one of the daughters of Roger & Jean Rich who has conveyed that the family plans to give the WHA many new historical items related to Rich Lumber and the early days of Wanakena. Although Bill Gleason has generously stored artifacts in his Wanakena residence and allowed anyone interested to view the artifacts, it is my belief that when the WHA has a public facility to display the artifacts we already possess, that we will see donations of new & exciting artifacts forthcoming.

If any of our members have thoughts or ideas, please share them with one of the Trustees listed on the address page of this newsletter or send an email to wanakenaha@aol.com.

Hope to see you walking the bridge sometime soon.

ORDER FORM	
Wanakena Historical Association, PO Box 73, Wanakena NY 13695	
DVD – 16 Minute WANAKENA FOOTBRIDGE HISTORY	<input type="checkbox"/> \$10 plus \$4.00 shipping <input type="checkbox"/> No. wanted
WANAKENA CAT'S MEOW KEEPSAKES	
Rebuilt Wanakena Bridge (2017)	<input type="checkbox"/> \$20 plus \$6.50 shipping <input type="checkbox"/> No. wanted
Wanakena Welcome Sign (2016)	<input type="checkbox"/> \$20 plus \$6.50 shipping <input type="checkbox"/> No. wanted
'The Helen' Tour Boat (2015)	<input type="checkbox"/> \$20 plus \$6.50 shipping <input type="checkbox"/> No. wanted
O'Leary Guest House (2014)	<input type="checkbox"/> \$20 plus \$6.50 shipping <input type="checkbox"/> No. wanted
Wanakena Train Depot (2013)	<input type="checkbox"/> \$20 plus \$6.50 shipping <input type="checkbox"/> No. wanted
Old General Store (2012)	<input type="checkbox"/> \$20 plus \$6.50 shipping <input type="checkbox"/> No. wanted
Wanakena Hotel (2011)	<input type="checkbox"/> \$20 plus \$6.50 shipping <input type="checkbox"/> No. wanted
Footbridge	<input type="checkbox"/> \$20 plus \$6.50 shipping <input type="checkbox"/> No. wanted
TOTAL AMOUNT ENCLOSED: \$ _____	
Keepsakes & DVDs will be mailed to the following address, unless otherwise indicated with the order	
NAME:	Date:
Address:	State: Zip:
Phone:	E-mail:
Prefer to receive any follow-up by: <input type="checkbox"/> E-Mail <input type="checkbox"/> Phone	

WHA MEMBERSHIP:

JOIN OR RENEW TODAY

Your current membership status should be indicated on the mailing label. If your membership is expired or you have never formally joined, please complete the form below and send form and payment to: **Wanakena Historical Association, PO Box 73,**

Annual Membership:	Individual Membership: <input type="checkbox"/> 1 year \$10 <input type="checkbox"/> 3 years \$25
	Family Membership: <input type="checkbox"/> 1 year \$25 <input type="checkbox"/> 3 years \$60
	Contributing Member: <input type="checkbox"/> \$50
	Lifetime Membership: <input type="checkbox"/> \$100
<input type="checkbox"/> New or <input type="checkbox"/> Renewal	
NAME:	Date:
Address:	State: Zip:
Phone:	E-mail:
Prefer to receive correspondence by: <input type="checkbox"/> E-Mail <input type="checkbox"/> US Mail	
<input type="checkbox"/> GIFT MEMBERSHIP for:	
NAME:	Date:
Address:	State Zip
Phone:	E-Mail:
<i>Gift recipient will be notified by mail</i>	
<i>All GIFTS are tax-deductible</i>	



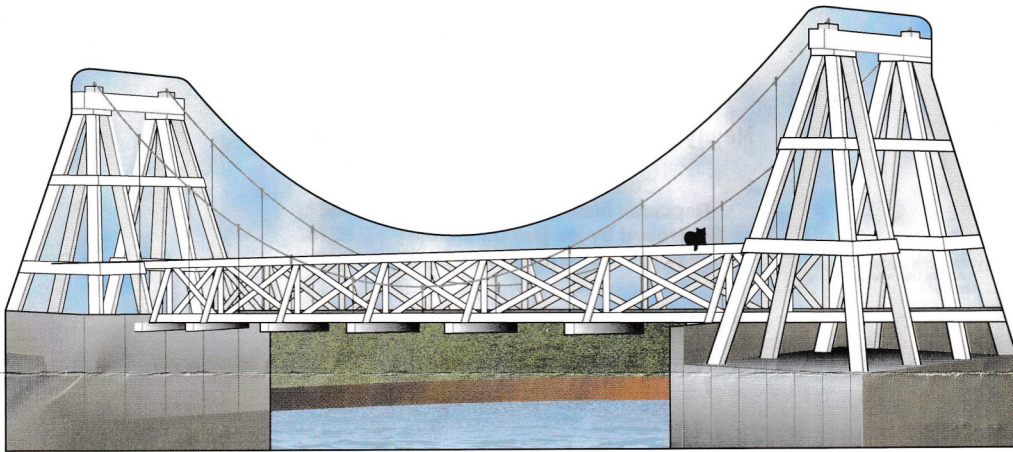
Wanakena Historical Association
 PO Box 73
 Wanakena, NY 13695

Non-profit
 US Postage
PAID
 Syracuse, NY
 Permit No 1362

Next Meeting
Sept 9th – 9:30 am

WHA Board of Trustees (2017)	
Allen Ditch (Pres.)	Judy Hastings Keith
Ron Capone (Treas.)	Sara Cibelli
Sue Smeby (Secty)	Gerry Cibelli
Sandy Conklin	Paul Flynn
Bill Gleason	Virginia Peters
Primrose McVay	Blanche Siskavich
Marsha Smith	Gail Simmons
John Steinburg	

2017 WHA Keepsake ~ The 2016 Wanakena Footbridge



Once again Carol Cassidy and Ginny (Lea) Peters worked through the winter to design a new, but very familiar Wanakena landmark. The 2017 keepsake is the rebuilt Wanakena footbridge. When you compare the Cat’s Meow keepsake of the original footbridge to the 2017 version, it is apparent that the cement abutments are more pronounced and raises the bridge higher over the river (2 ½ feet). The inscription on the back, reads:

“Newly Rebuilt Wanakena Footbridge 2016. Contractor Raymond Lobdell. Replaces historic footbridge circa 1902. Destroyed by ice jam on January 13, 2016. Thanks to all who made this project possible.”

The price for the keepsake is still \$20, but we had to raise the shipping costs this year, as last year we took a loss for each mailing. **Contact any of the Trustees or see Page 7 to order the new Wanakena footbridge.**