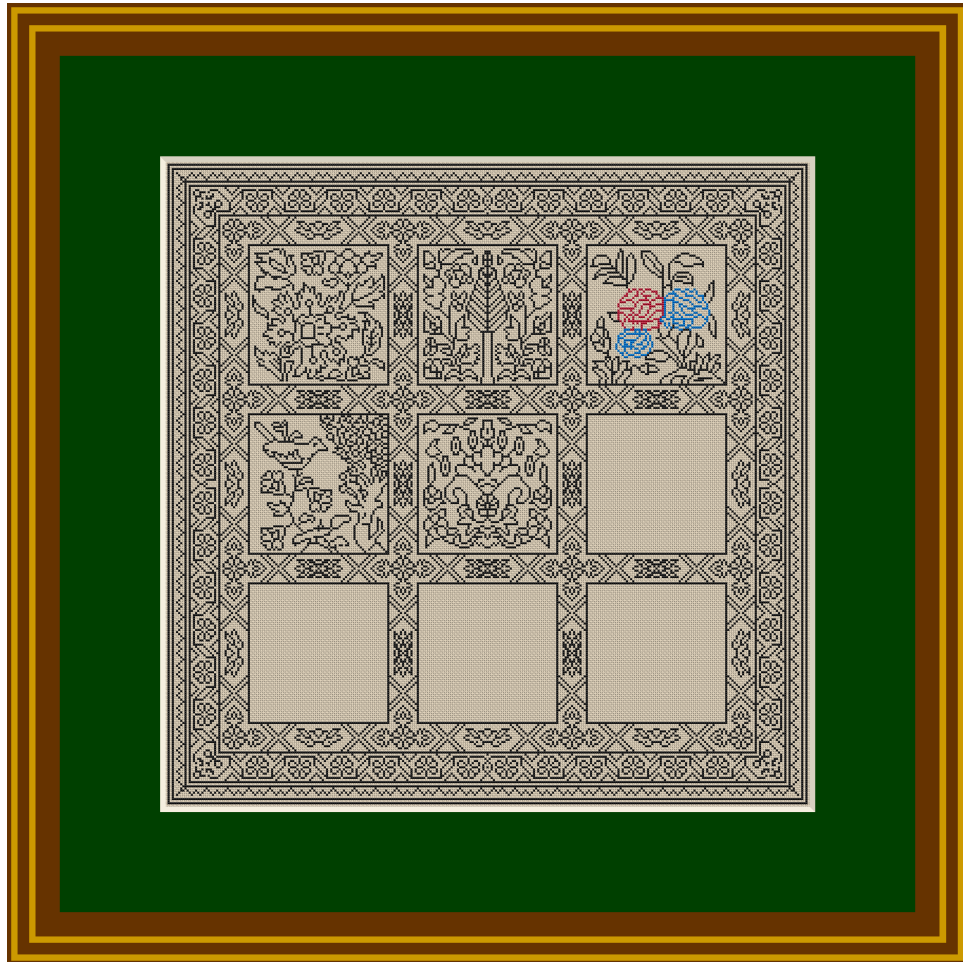


Natalia's Fine Needlework

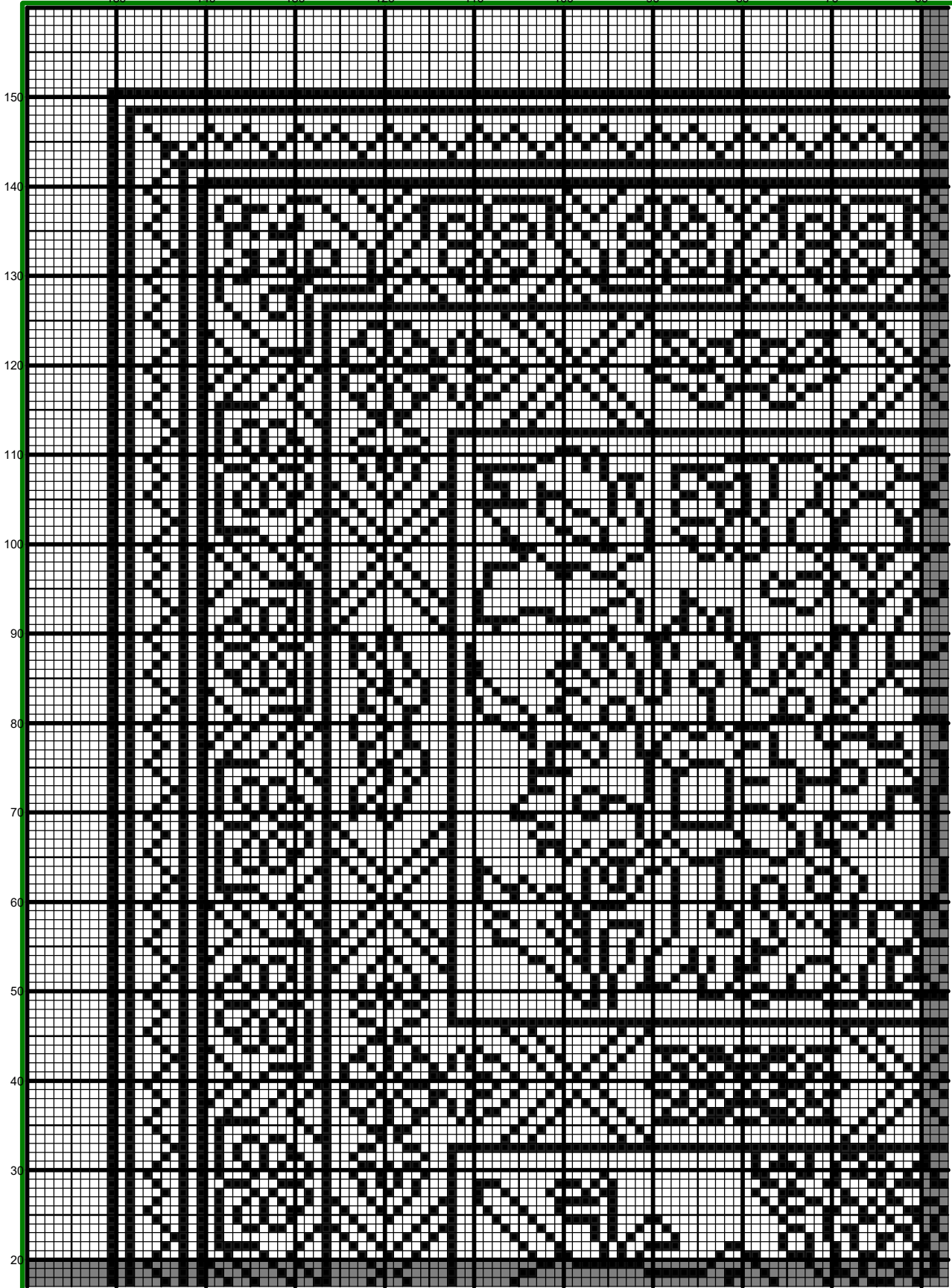
Amalgam 2021 June

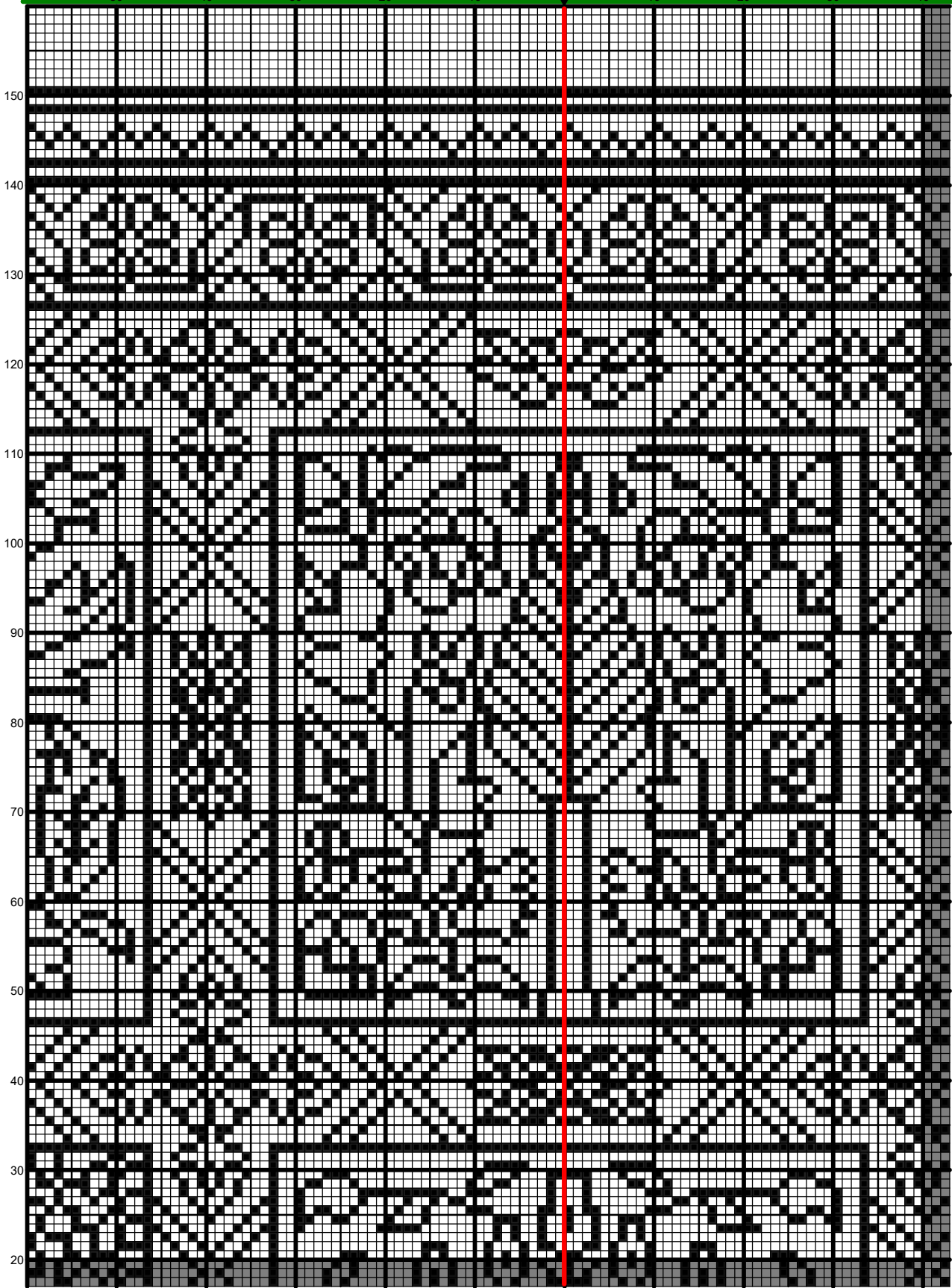


Design size: 6.06 x 6.06 inches or 15.39 x 15.39 cm

www.dollhouseneedlepoint.com

www.artofpetitpoint.com





150

140

130

120

110

100

90

80

70

60

50

40

30

20



150

140

130

120

110

100

90

80

70

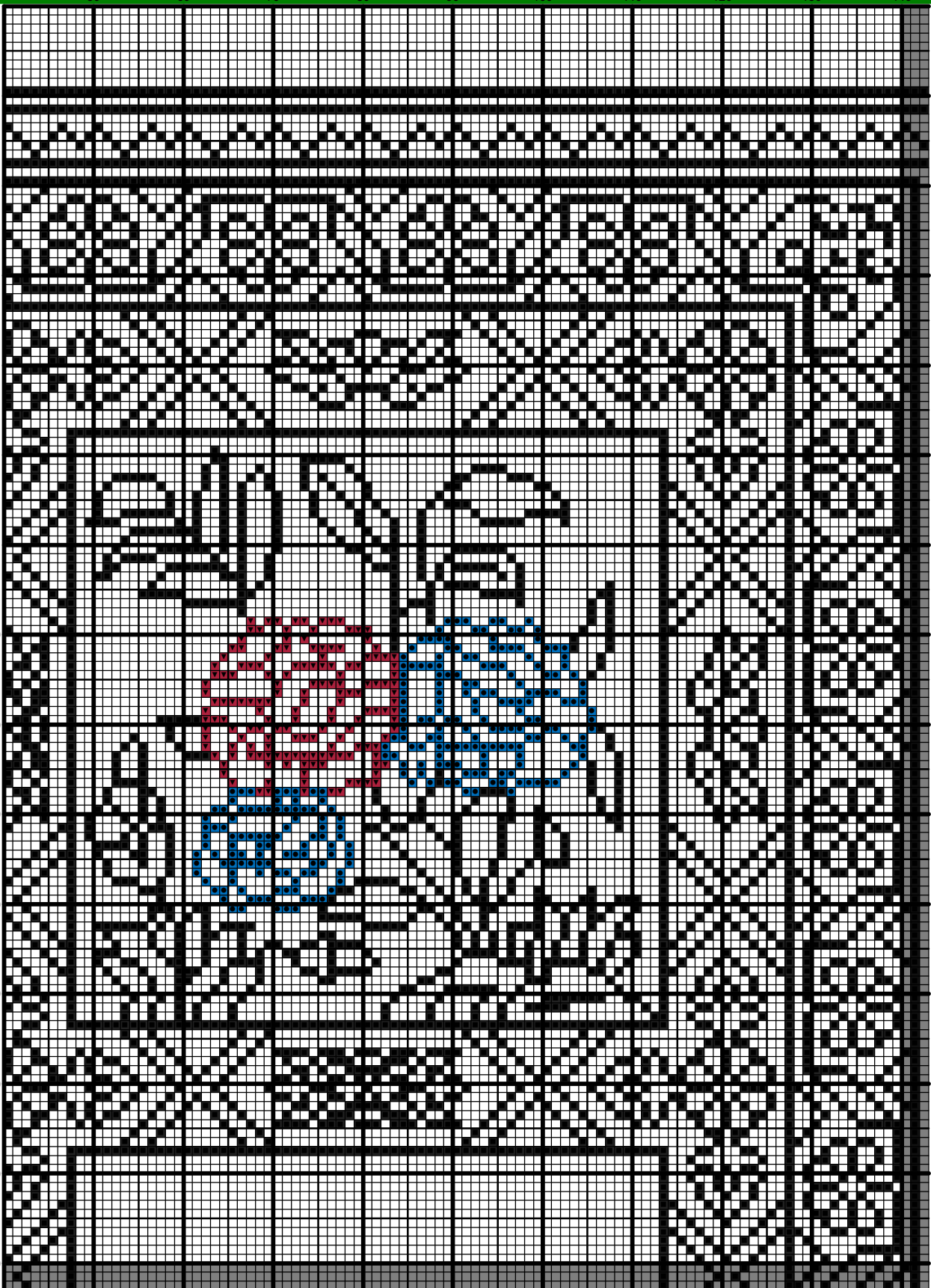
60

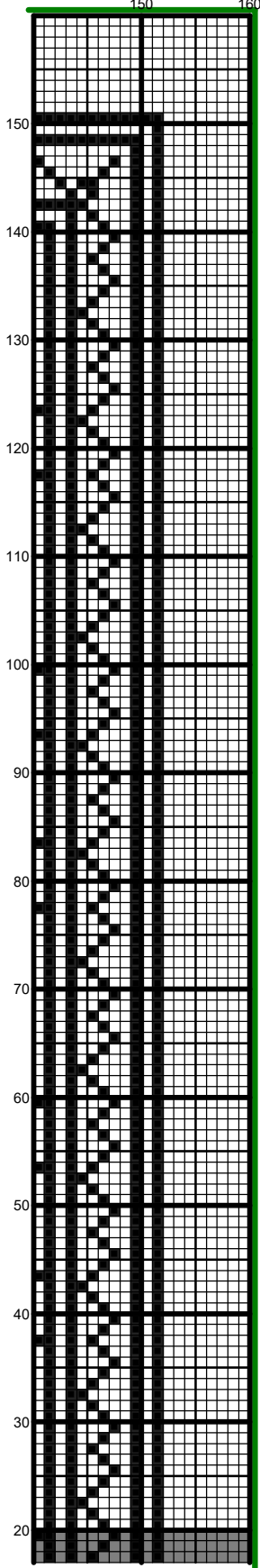
50

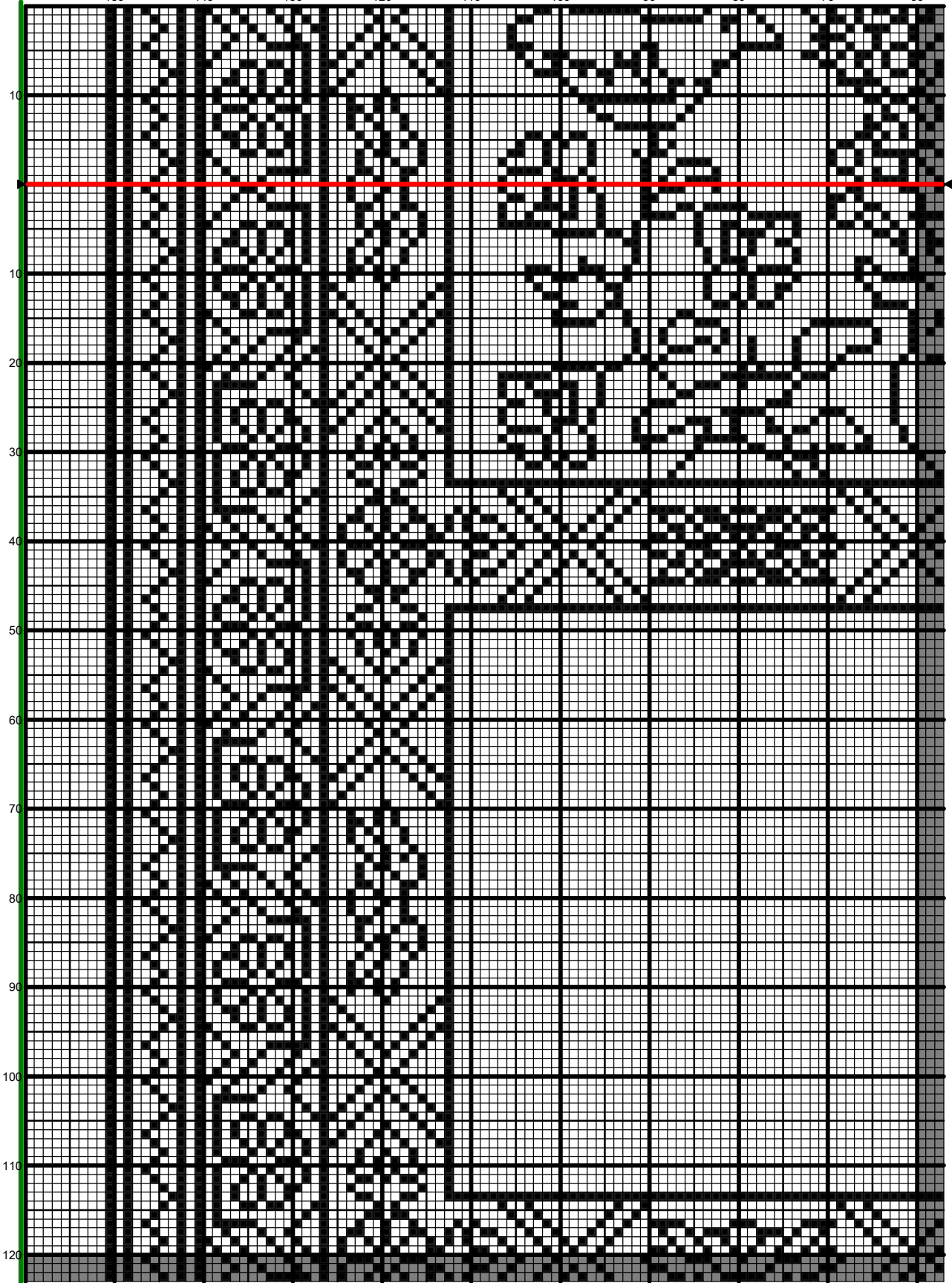
40

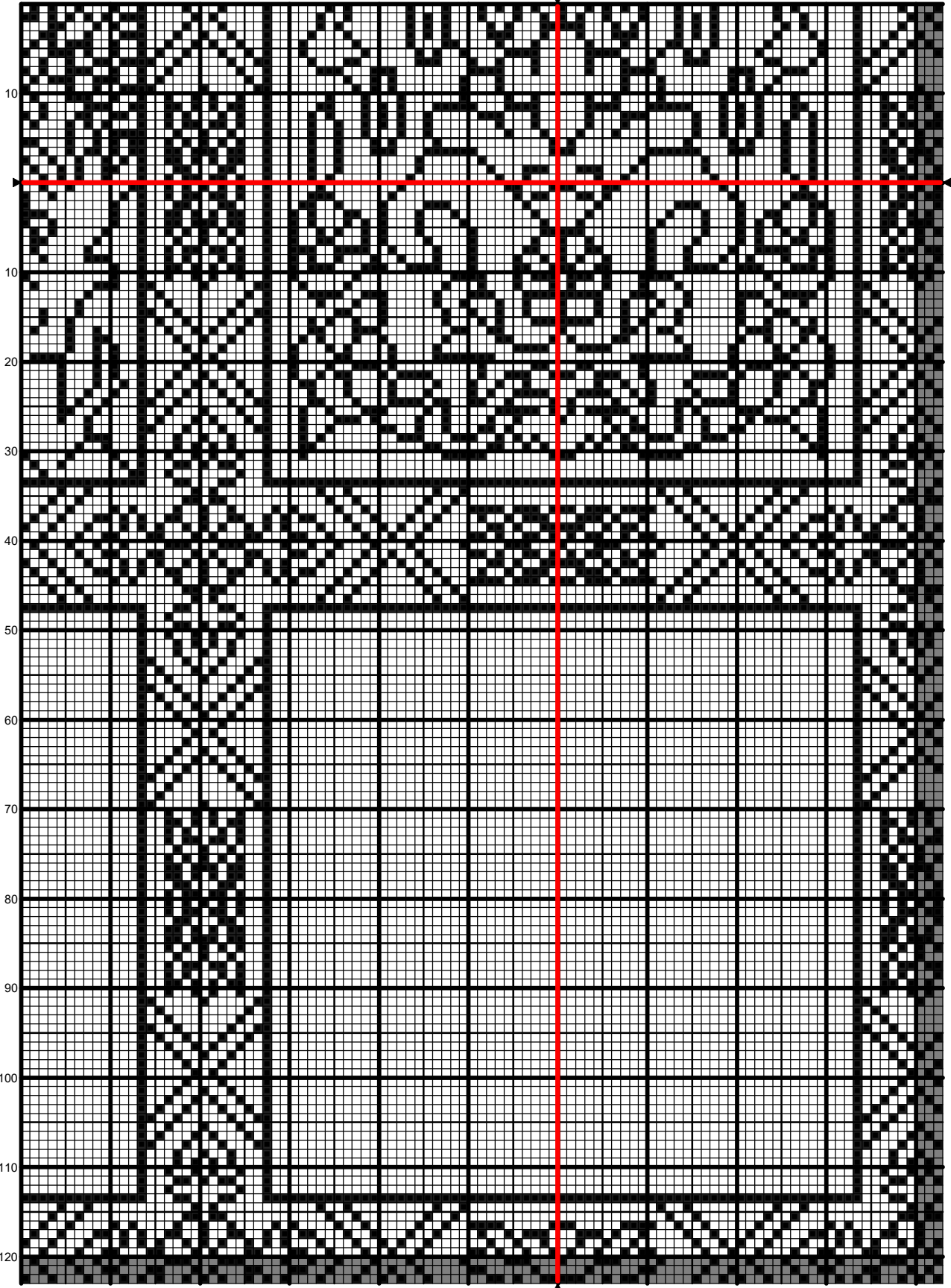
30

20









10

10

20

30

40

50

60

70

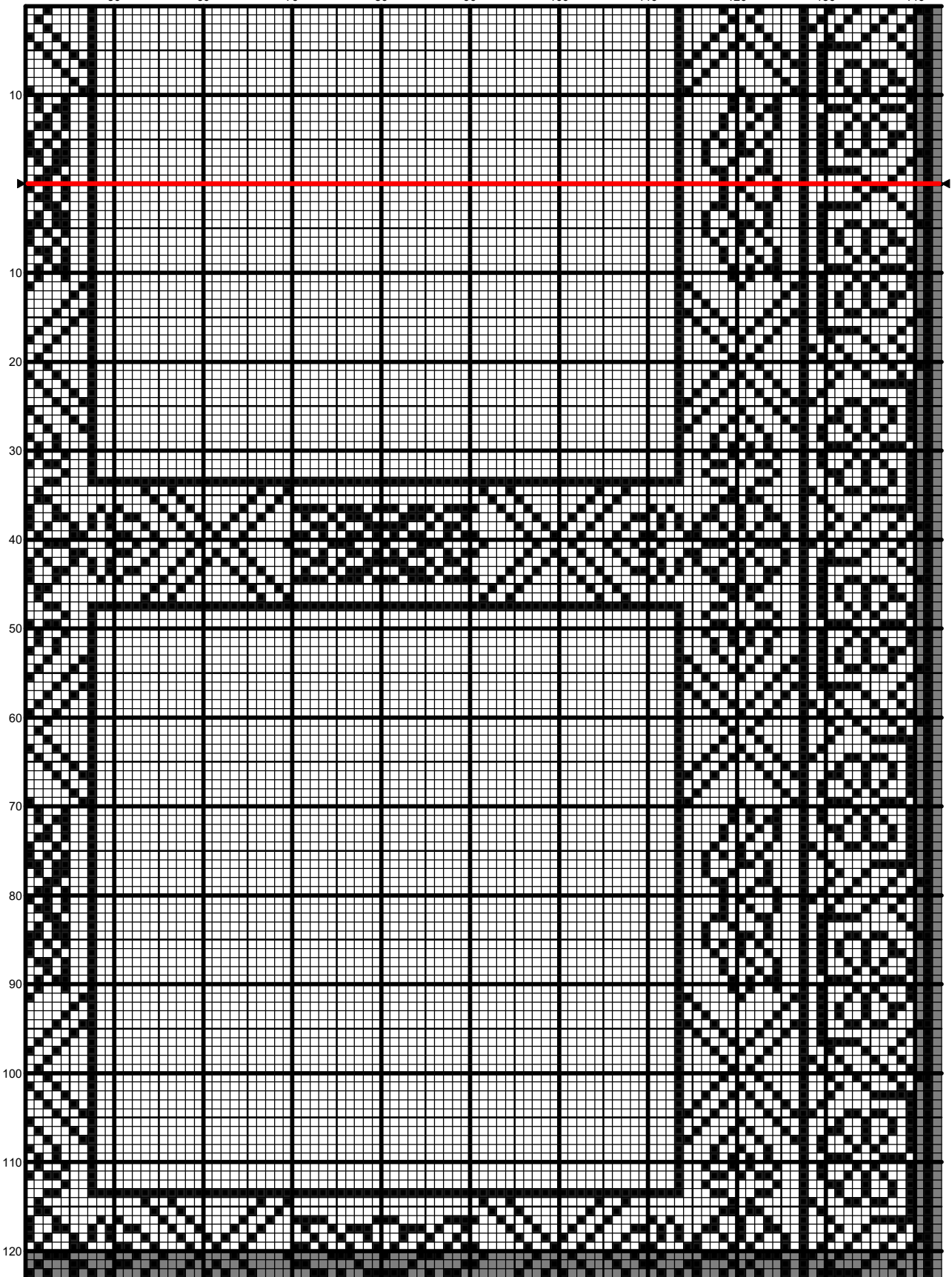
80

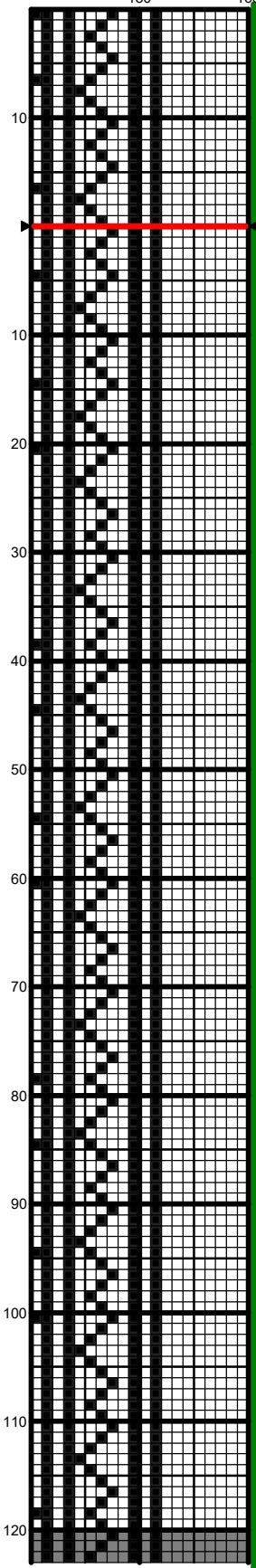
90

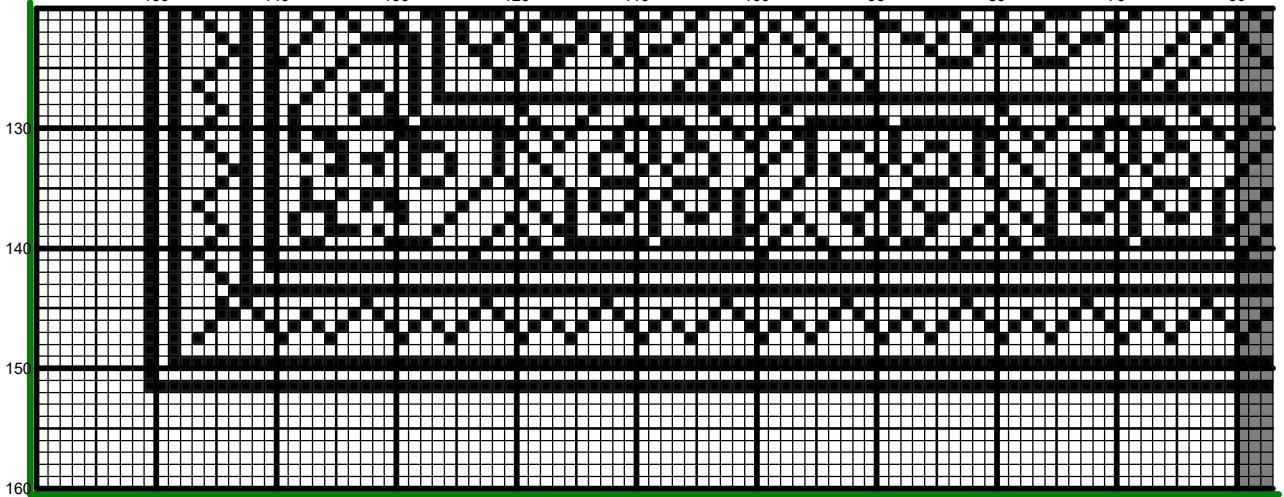
100

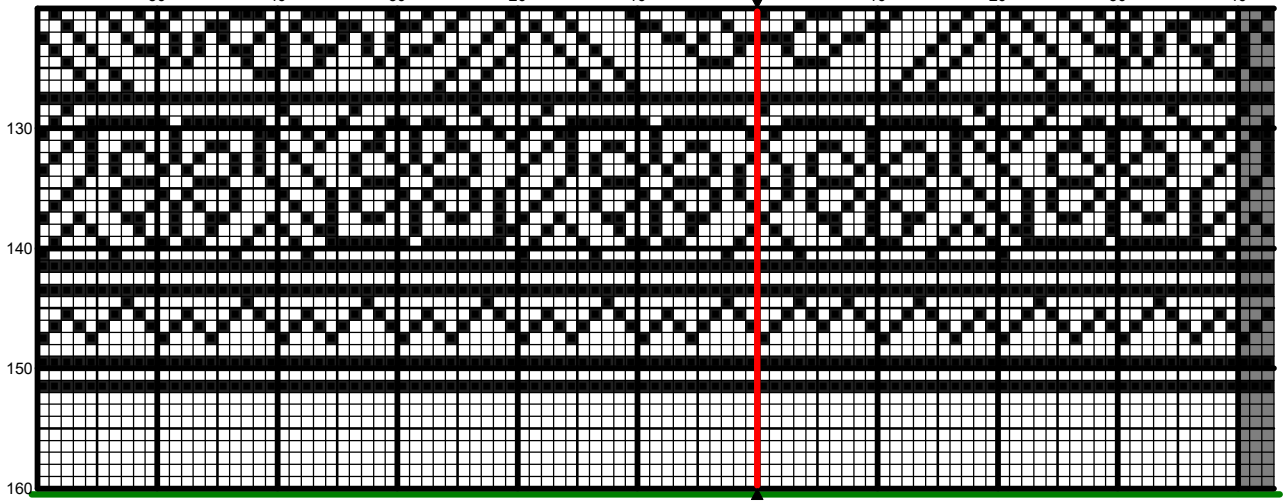
110

120







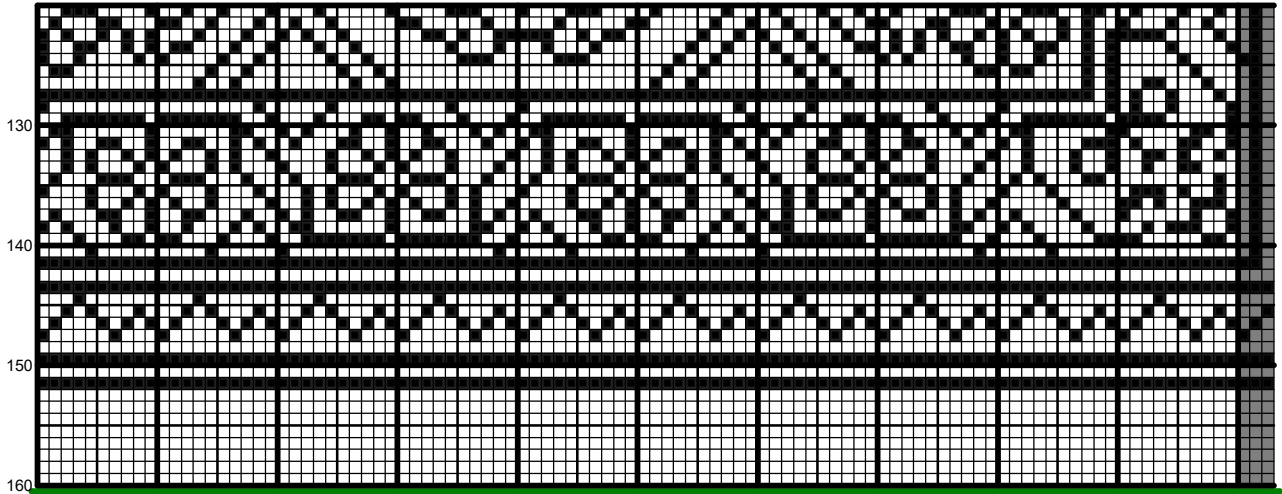


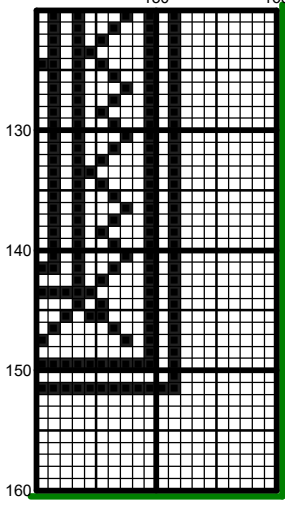
130

140

150

160





Instructions and Symbol Key for Design "Amalgam 2021 June"

Fabric: 50 count Aida

Stitches: 303 x 303 **Size:** 6.06 x 6.06 inches or 15.39 x 15.39 cm

Colours: DMC

Use 1 strand of thread for tent continental stitch

| <u>Sym</u> | <u>No.</u> | <u>Colour Name</u> | <u>Sym</u> | <u>No.</u> | <u>Colour Name</u> |
|------------|------------|---------------------|------------|------------|--------------------|
| ■ | 310 | Black | ■ | 995 | Caribbean blue |
| ▼ | 309 | Dark raspberry rose | | | |

This chart has been designed and printed with our best intentions of being without mistakes. However, the possibility of human error, printing mistakes or the variation of individual stitching does exist, and we regret that we cannot be responsible for this.

Note: The shaded blocks on the chart represent overlapping stitches.

Copyright © Natalia Frank. 2021 All rights reserved.

FOR PERSONAL USE ONLY