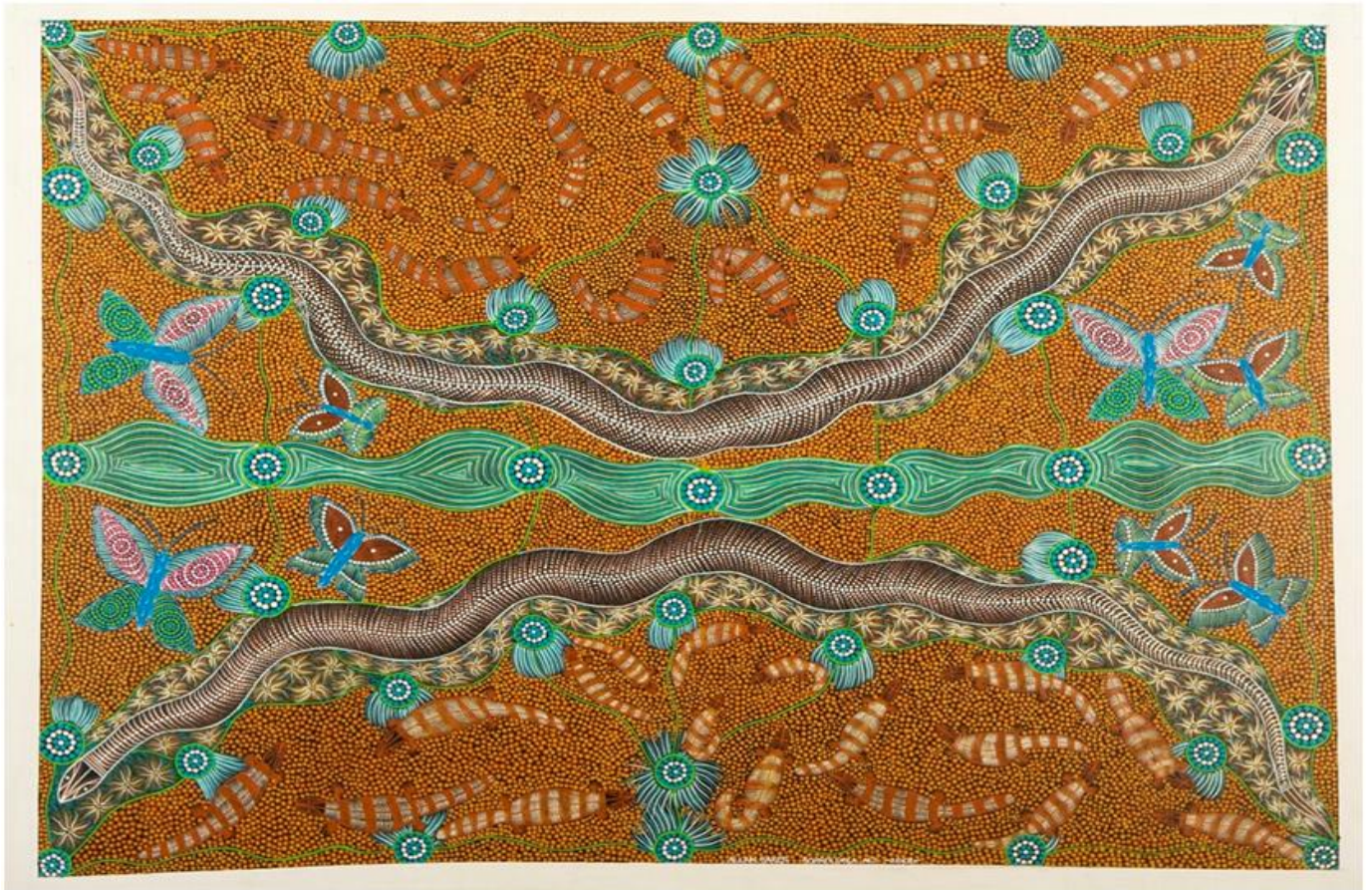


McArthur River Mine
**Community
Benefits Trust**



ANNUAL REVIEW 2014

10 December 2014

Executive Summary

This has been a record year for the MRM Community Benefits Trust with more grants approved and active in the community than at any time in the Trust's seven year history.

In all, 17 new grants were approved representing a commitment of \$2.3 million.

This brings the total supported by the Trust since its establishment in 2007 to 60 programs and \$10 million in grants.

The focus areas of Environment and Art and Culture have for the second year in a row, been major beneficiaries of the Trust accounting for 19% and 16% of the grants committed respectively.

This included continued investment in the successful eco-tourism and cultural heritage developments by the Yanyuwa people through the Barni Wardimantha Awara, a plan for the Yanyuwa Indigenous Protected Area of the gulf. It also included 5 grants targeting different aspects of art and culture: language (Yanyuwa Dictionary); cultural preservation (Keeping and Sharing Place); cultural heritage protection and education (Garrawa Rock Art); performing arts (Artback NT); and music and songs (Gulf Country Songbook).

Significantly, 5 of the 17 grants supported during 2014 continue actions begun in earlier years and now being either further developed or extended.

The largest area of investment during the year was however, in Social and Community Development with 4 new programs accounting for 29% or \$651,854 of new grants supported.

Organisations supporting two sports – NTAFL and soccer – received grant assistance to further develop local participation and capability, as well as establish new local competitions. Funding was also provided for essential new infrastructure to support the training and resourcing of the Borroloola Fire and Emergency Response Group.

Overall, a comparison between the priorities identified by the community in planning for the 2014 financial year and the results of grants supported demonstrate the Trust is continuing to directly address the needs and interests of the gulf regional community.

From a governance perspective, 4 new Directors were appointed to the 9 person Trustee board. Two of these represent the local Indigenous Members – David Harvey for the Yanyuwa people and Allan Baker, Gurdanji. Highly experienced engineer, Graeme Townes was appointed an independent Director appointed by MRM and the other is the MRM nominated Director. These changes have brought new perspectives and skills to the Board.

The evolution of the Trust beyond just grant funding assistance has also continued during 2014.

Progress on the Multipurpose Community Centre planned for Borroloola has advanced with the site subdivision approval granted, a business plan completed, development planning architecture continuing and a potential operator identified in YMCA.

A new direction proposed is in relation to enterprise and job creation. That is, for the Trust to utilise its holding company, McArthur River Mine Community Benefits Limited, to drive future enterprise development objectives. This would overcome the constraint created by the Trust's charitable status in that it cannot support private, profitable enterprise. This is an area of further research and development in 2015.

This Annual Review provides a summary of the Trust's activities throughout the 2014 financial year. The Financial Report provides a summary of the report by Trust auditors, Ernst & Young. Reports from grant recipients provided in Appendix 1 outline how the Trust continues to deliver tangible and substantial benefits to the Gulf regional community.

Table of Contents

Executive Summary.....	2
1. MRM Community Benefits Trust.....	4
Objectives.....	4
Commitments.....	4
Charitable Purpose.....	4
This Report	5
2. Trustee Board	6
Directors.....	6
Board Meetings.....	6
3. Trust Activities.....	8
Management.....	8
Multipurpose Community Centre, Borroloola.....	9
Grants – Ongoing Programs	10
Grants – New Programs	10
Grants - Allocation against Focus Areas	16
Annual Plan Development.....	18
4. Financial Report.....	19
5. Impact on the Community	21
Key Performance Measures	21
Action Against Community Priorities.....	22
Appendices.....	24

Cover illustration: The painting shown on the cover is by Borroloola artist Allan Baker. Allan is represented by the Waralungku Arts Centre in Borroloola, which is supported by McArthur River Mining. Waralungku Arts represents over 40 different artists from the Gurdanji, Mara, Garawa and Yanyuwa traditional language groups. Borroloola artists associated with Waralungku have been selected to show their work in the Telstra Indigenous Art Awards and are represented in the collections of major Australian art galleries.

1. MRM Community Benefits Trust

On 4 July 2007, McArthur River Mining (MRM) and the Northern Territory Government (NTG) entered into an agreement to establish the MRM Community Benefits Trust (the Trust) as a vehicle for delivering social and economic benefits to the Borroloola regional community.

Objectives

The Trust aims to:

- Facilitate ongoing sustainable development of the community and the region including community capacity building and local business enterprise development
- Build infrastructure within the community to a level that will facilitate the creation of local jobs, diversity of new enterprise, beneficial social activity and improved health outcomes
- Enhance the positive social and economic impact of MRM's mining operations on the community and the region as far as is reasonably practical
- Create jobs and training opportunities.

Commitments

The Trust is committed to supporting:

2. Employment, training and enterprise development generated both through MRM's mining operations and in the wider Borroloola economy including:
 - Fulfilling MRM's target to achieve 20% workforce participation by Indigenous people
 - The commitment to generate and support the establishment of one new local business per annum to supply a product or service to the mine
3. A community-based package of social and economic programs benefiting: enterprise and job creation; environment; education; social and community development; health; culture and art.

Charitable Purpose

The charitable purpose of the Trust is to provide:

- Grants, scholarships, bursaries and other assistance for education, vocational training and enterprise development
- Grants and other assistance for community infrastructure and community development, including the promotion of initiatives in the areas of health, law, arts, sport and culture.

This Report

This report covers the operations of the Trust for the financial year ending 30 June 2014.

As required under the Trust Deed, this Annual Review includes:

- A summary of the Trust's activities
- The financial position of the Trust Fund
- Details of the distributions made by the Trustee for that financial year and the projects to which the distributions relate
- Impact on regional development, new jobs and community infrastructure.

2. Trustee Board

Directors

The Trustee Board comprises nine Directors whose roles are to manage the Trustee Company's business and affairs, authorise payments and appoint and oversee the supporting officers. The Board members during the 2013 financial year were as follows.

Trustee Directors, 2014

Constitutional requirement	Director	Changes
Two Directors nominated by MRM, including one independent	Brian Hearne, Chief Operating Officer, Glencore's zinc assets in Australia (Chair)	Resigned January 2014
	Greg Ashe, Chief Operating Officer, Glencore's zinc assets in Australia	Appointed January 2014 Elected Chair at the March 2014 meeting
	Graeme Townes	Appointed December 2013
Two Directors nominated by the Northern Territory Government, including one independent	John de Koning, Executive Director Department of Housing and Local Government	
	Shirley MacPherson, Group Manager Indigenous, Broad Construction Services	June 2014 - NT Government resolved to seek new nominations for independent director.
One Director elected by Community Members	Stan Allen	
Four Directors representing Indigenous Members	Tony Jack, Mayor, Roper Gulf Shire Council, Garrawa Traditional Owner	
	Samuel Evans, Mara Traditional Owner	Warren Timothy appointed a proxy for Samuel
	David Harvey, Yanyuwa Traditional Owner	Appointed August 2013
	Allan Baker, Gurdanji representative	Appointed August 2013

Board Meetings


The Trustee Board met five times during the financial year, one meeting more than is required under the Constitution. This is as a result of the postponement of the June 2013 meeting until August due to the unavailability of Directors and inability to convene a quorum at that time. Over the two financial years therefore, the number of meetings required has been fulfilled.

The Annual General Meeting was held in December 2013 immediately prior to the Board meeting.

A quorum for a meeting of Directors is 5 with at least one of the Directors present forming the quorum having been nominated by each of the Foundation Members.

Attendance at Board Meetings, 2014

<i>Director</i>	<i>1 August</i>	<i>3 October</i>	<i>5 Dec.</i>	<i>27 March</i>	<i>26 June</i>	<i>Total</i>
Brian Hearne	✓	✓	✓			3
Greg Ashe				✓	✓	2
Graeme Townes			✓	✓	✓	3
John De Koning	✓	✓	✓	✓	✓	5
Shirley MacPherson						0
Stan Allen	✓	✓	✓		✓	4
Allan Baker	✓		✓	✓		3
Tony Jack	✓		✓	✓	✓	4
Sam Evans					✓	1
David Harvey	✓			✓		2
<i>Total attending</i>	6	3	6	6	6	

 *Term of engagement as Director*

There was one meeting during the year when a quorum was not present: October 2013. No decisions were made in relation to new grant applications at this meeting. Any resolutions made were circulated to the absent directors for approval and ratified at the subsequent meeting in December 2013.

3. Trust Activities

Management

Secretariat

In June 2014, Bronwyn Astridge succeeded Sarah Moran as Executive Officer, Big Rivers Region, Department of the Chief Minister. Bronwyn has assumed the responsibilities of managing the financial arrangements and accounts, preparing meeting documentation and supporting the Secretariat. She joins Katherine Region Economic Development Officer, Phil Richards, in performing the Secretariat function for the Trust.

Marketing

Visual recognition of the Trust's activities within the region has been improved with the development of a range of signage made available to grant recipients. This includes options such as magnetic signage for vehicles, metal permanent signage for infrastructure, large permanent stickers, or temporary banners. The signage is available through the Project Officers. Grant recipients are required to promote the support of the Trust under the conditions of Funding Agreements.

Advice on GST

Following concerns raised during the year regarding the tax treatment of grants, advice was sought from Trust auditors, Ernst & Young. It found that in agreeing to pay a grant, the Trust is paying for the delivery of agreed services based on the submission outline and the KPIs built into Funding Agreements.

Accordingly, if the grant recipient is registered for GST, then the Trust should be entitled to claim full input tax credits. Essentially, this means the Trust could recover up to 10% of grant costs from the Australian Government and therefore have more funds available for investment in community programs.

The Trust was registered for GST effective from 1 July 2014. All documentation (Funding Agreements, Funding Submissions, Funding Guidelines) has been updated and current grant recipients informed. In the future, the value of grants committed will be expressed in GST exclusive terms.

Enterprise Development

At the December 2013 Board meeting, a discussion paper was presented proposing the Trust utilise its holding company, McArthur River Mine Community Benefits Limited, a company limited by guarantee, to drive our enterprise development objectives.

The principal activity of the company is currently to act as trustee of the MRM Community Benefits Trust. It has zero assets or liabilities. We propose that it now develop a separate enterprise development arm which would act through joint venture and potentially independently to establish new businesses in the Gulf region.

The potential benefits of this approach to enterprise development are:

- Diversification of the range of people and private organisations directly involved in business and economic development in the region and through this, improved outcomes for the community
- Better integrated programs supported by the Trust and targeting education, pre-employment training and skills development within the community with a broader economic picture in mind
- Generating a revenue stream for the Trust which can increase the funds available for investment and support developments such as the multipurpose community centre which otherwise may not be financially viable long term.

The Board resolved that this concept had merit and should be further explored and developed for their consideration. As at the end of the financial year, two proposals had been received from consultants answering a brief to undertake a regional economic planning and business planning exercise to further scope out the potential for this initiative and set a course of action for its implementation. Discussions have also been conducted with Indigenous Business Australia regarding their interest in partnering and supporting new enterprises within the region.

Multipurpose Community Centre, Borroloola

Work has continued on the planned development of a multipurpose community centre in Borroloola intended to benefit the entire community.

In June 2014, the Trust board agreed that the Trust would be the owner of the land and buildings comprising the community centre but that an operator would be contracted to manage and maintain the facility.

During the financial year, the key milestones achieved have been as follows.

Multipurpose Community Centre Progress, 2014

August 2013	Malandari Properties (as Trustee for the Malandari Properties Unit Trust), a partnership between the Mabunji Aboriginal Resource Association Inc and Mawurli and Wirriwangkuma Aboriginal Corporation (MAWA), confirmed that it would gift an area of land for the centre, centrally located on Searcy Street, near the corner of Robinson Road, located behind the shops and a short walk from the Borroloola School.
September 2013	With the site confirmed, detailed planning commenced with the first steps being: <ul style="list-style-type: none"> - Subdivision planning - Development planning and scheduling - Liaison with appropriate authorities for services to be supplied to the site.
October 2013	Consultation was conducted with community organisations and groups regarding the status of the project, revised designs and business planning opportunities.
January 2014	Darwin-based consultant, Business and Community Developments, engaged to undertake a detailed business plan for the centre.

March 2014	Subdivision plan for the Malandari Properties site submitted to the Department of Lands, Planning and Environment seeking approval to separate the allotment designated for the multipurpose community centre.
May 2014	Consultation was conducted with community organisations and groups regarding the status of the project and the draft business plan. YMCA identified as a potential operator/manager of the centre and discussions commence with their leadership.
June 2014	Subdivision approval received from the Department of Lands, Planning and Environment enabling detailed site surveys and pegging to commence. Final business plan submitted to the Trust Board and approved.

Grants – Ongoing Programs

Ongoing Programs

During the financial year, the Trust continued to provide funding support to programs approved in prior years.

Ongoing Grant Programs, 2014

Date approved	Grant recipient	Focus	Program	Amount	Status
Feb 2011	Department of Education and Training	Education	Strong Start Bright Future program at Gulf schools	\$1,012,000	Program now complete but excess funds available and may be applied to additional activity subject to an approved variation.
Dec 2011	James Cook University	Environment	Community conservation of Dugong and Dolphin in Yanyula Sea Country	\$316,000	Originally intended as a two year program but only really commencing in 2014 financial year.
June 2012	Borroloola School	Education	Breakfast Program	\$150,000	Ongoing – due for completion in 2015
December 2012	Artback NT	Art and Culture	Arts Development and Touring	\$150,000	Due for completion in 2015
December 2012	Books in Homes	Education	Books in Homes	\$30,916	Excess funds available to continue in 2014 at Kiana and Robinson River schools.

Grants – New Programs

Allocations and Investment Committee

The Allocation and Investments Committee had four meetings relevant to decisions made during the financial year. This includes a meeting in June 2013 as there were 8 submissions that were pending presentation to the Trustee board for consideration as a result of this meeting. These were tabled at the Board meeting of August 2013.

The Committee is comprised of the gulf region based Directors of the Trust, the Project Officers, Northern Territory government representatives as Secretariat to the Trust and an MRM representative.

The role of the Allocations and Investment Committee is to review grant submissions, discuss their merits and provide a recommendation to the Board on whether to approve or decline the grant. The intent of the Committee is to provide a forum for debate and discussion, particularly among local Directors.

Attendance at Allocation and Investment Committee Meetings, 2014

<i>Committee members</i>	<i>27 June</i>	<i>5 November</i>	<i>14 March</i>	<i>8 May</i>
Stan Allen	✓	✓	✓	✓
Allan Baker		✓		
Tony Jack			✓	✓
Sam Evans			✓	✓
Warren Timothy				✓
David Harvey		✓		
Jason Elsegood, Project Officer	✓	✓	✓	✓
Wendy Moulds, Project Officer	✓	✓	✓	✓
Phil Richards, Secretariat	✓	✓	✓	✓
Joanne Pafumi or proxy, Chrissy Joll, MRM	✓	✓	✓	✓
<i>Total attending</i>	<i>5</i>	<i>7</i>	<i>7</i>	<i>8</i>

Submission outcomes

A total of 27 submissions were reviewed by the Board during the financial year. Of these:

- 17 were approved for funding with a total commitment of \$2,286,275
- 3 were declined
- 7 remain pending subject to further information or discussion.

Interestingly, of the 27 submissions received:

- 21 were received from organisations and groups based within the Gulf region including the regional council
- 2 were received from organisations operating within the Northern Territory
- 4 were received from interstate or national organisations.

This demonstrates the high level of interest locally in funding support from the Trust.

Grants - New Submissions 2013/14

Grant Recipient	Activity	Category	Program Value	Grant value	Status	Project description
Mabunji Aboriginal Resource Association Inc	Yanyuwa Encyclopaedic Dictionary	Art and culture	\$16,500	\$16,500	Approved	Covers the cost of publishing a dictionary of the Yanyuwa language which has been almost 30 years in development. It contains a historical overview of the Yanyuwa people and language, over 4,000 entries of defined Yanyuwa words and English translation and a collection of texts and over 150 song poems.
Mabunji Aboriginal Resource Association Inc	Keeping and Sharing Place	Art and culture	\$74,025	\$61,430	Approved	6 month consultation and planning program to design a concept for a facility to house and display the culture of the Gulf regional community.
Nangala Project	Indi Kindi	Education	\$1,503,464	\$450,000	Approved	Aims to improve the long-term educational outcomes for Indigenous children by creating a program focused on literacy and numeracy for remote region children from birth to 6 years of age.
Nangala Project	John Moriarty Football	Social and community development	\$701,667	\$300,000	Approved	Three year grant to provide community-based, highly experienced coaching for regular after school football training and competitive inter-community games on weekends and school holiday periods.
Mabunji and Li-Anthawirriyarra Sea Ranger Unit	West Island Turtle Camp (Phase 2)	Environment	\$322,825	\$148,192	Approved	Developing new accommodation facilities, employment and training for additional people to provide hospitality and tour guide services and research programs into green and flatback turtle breeding and behaviour. Previous grant for Phase 1 was \$157,826.
Mabunji and Li-Anthawirriyarra Sea Ranger Unit	Barni Wardimantha Awara Yanyuwa Indigenous Protected Area Consultancy (Phase 2)	Environment	\$478,600	\$227,000	Approved	Extends previously supported work into the development of plans for the Yanyuwa Indigenous Protected Area including developing small scale, low impact economic enterprises to provide an income stream and employment opportunities to support appropriate environmental management and monitoring activities. Previous grant for Phase 1 was \$113,850.
King Ash Bay Fishing Club	Phase 3 Monitoring - Barramundi, Golden Snapper	Environment	\$367,715	\$252,715	Declined	Sought to embark on a third stage of fish monitoring in the McArthur River and Gulf region and extend the scope from Barramundi and Golden Snapper to Mangrove Jack. The first two stages of this program were supported over the

	and Mangrove Jack monitoring					past 3 years by the Trust and \$330,772 invested to date. Submission declined as there are now a number of groups undertaking similar research including the Sea Rangers, Northern Territory Government and MRM and the community could already benefit through the information gained through the research supported to date.
McArthur River Mine	Pathways to Employment	Enterprise and job creation	\$194,524	\$162,362	Approved	The development of a community-based pre-employment training program which aims to develop local candidates for all jobs available in the region including the mine. The first stage of this work, supported by the Trust, will involve working with industry, Gulf Savannah and other specialist providers to develop the program and extensive consultation with job seekers, current employees and employers. At the same time, MRM will further develop its site based skills training program based on the capability needed to perform a variety of entry level jobs at the mine.
Monash University	Garrawa Rock Art Sites	Art and culture	\$159,764	\$42,535	Approved	Innovative and collaborative project involving Garrawa Traditional Owners, the Waralungku Arts Centre and Monash University to preserve and transmit knowledge about rock art from the Garrawa stone country to younger generations.
Mental Health Association	Suicide Story	Health	\$43,962	\$36,000	Approved	To conduct a training program in Borroloola which aims to strengthen the skills, knowledge and confidence of communities in preventing and intervening in suicide at the community level.
Mabunji	Artback NT – staging and lighting equipment	Art and culture	\$229,279	\$122,511	Declined	Trust Board was advised there was some risk of duplication of equipment already owned by MAWA. Further planning was considered to be required.
Gulf Health Services	Borroloola AFL	Social and community development	\$2,015,070	\$220,000	Approved	To support Gulf Health Services and NTAFL to bring an Aussie Rules Football competition to the region. Supported for a period of three years with this first grant covering both the establishment of the program and the purchase of a bus for transporting players throughout the region.

Borroloola School	Student Hostel	Education	\$350,000	\$165,000	Pending	NT Government released new review report into Indigenous Education in May. As a result, requested that the Trust halt work with the School on developing the concept and planning for the hostel until such time as the government has determined its policy settings.
Mabunji	Keeping and Sharing Place Stage 3.	Art and culture	\$164,690	\$155,606	Approved	Work will begin on the building design and internal fit out, plans for the museum grade archival spaces and collection research to identify local artefacts and artworks currently residing in collections outside the region.
Mabunji	Wunala Creche New Building	Education	\$2,657,951	\$1,062,951	Pending	Deferred decision until consultation with Traditional Owners regarding the site selected and the outcomes of federal government grant applications.
Malandari Properties	Staff Housing	Enterprise and job creation	\$450,000	\$165,000	Approved	For constructing 3 accommodation units for staff of Malandari Properties and used as part of an incentive for local employees of the store to support retention and career development.
Mabunji	Gulf Country Songbook	Art and culture	\$162,480	\$97,768	Approved	The production of a full-colour book and DVD celebrating the non-ceremonial songs and language of the Yanyuwa, Marra, Gurdanji and Garrawa people. The book is the culmination of the Gulf Country Musecology program, supported by a separate \$193,810 Trust grant.
Mungoorbada Aboriginal Corporation	Meatworks	Enterprise and job creation	\$300,000	\$250,000	Pending	Further information requested and a meeting with the Board and MAC leadership sought.
Mungoorbada Aboriginal Corporation	Hay Project	Enterprise and job creation	\$250,000	\$250,000	Pending	Further information requested and a meeting with the Board and MAC leadership sought.
Mungoorbada Aboriginal Corporation	Purchase of a secondhand D8 dozer	Enterprise and job creation	\$500,000	\$450,000	Pending	Grant offer of \$50,000 made for a deposit rather than the full cost. Subject to MAC acceptance.
Safe4Kids	Child safety program	Social and community development	\$193,821	\$193,821	Declined	Trust Directors advised there had been no expressed demand for this program and consultation had not been conducted locally by the proponent.

Roper Gulf Shire Council	Pool operations	Social and Community Development	\$738,925	\$55,000	Approved	Supports the operating costs of the Borroloola Community Pool in 2014. This follows a previous grant of \$66,000 over three years for the same purpose.
Borroloola Fire and Emergency Response Group (FERGs)	Storage Shed	Social and Community Development	\$76,854	\$76,854	Approved	Covers the full cost of constructing a shed for housing the units vehicles and equipment, and improving training facilities.
Kiana School	Breakfast Program	Education	\$19,800 (over 3 years)	\$6,600	Approved	To support the breakfast program at Kiana School catering for 13 students daily for one year.
Roper Gulf Shire Council	Borroloola Streetscape Renewal Project	Social and Community Development	\$1,510,047	\$864,000	Pending	Support to improve roads in Borroloola and in the Garawa Camp, Marra Camp and Yanuala Road. Roper Gulf Shire Council is to respond to the Board regarding ongoing maintenance and scheduling with other civil works.
Department of Education	Borroloola School Employment Pathways Project	Education	\$1,700,000	\$660,000	Pending	Further information requested and meetings planned.
MRM and Gurdanji Traditional Owners	Gurdanji Rangers Group	Environment	\$80,974	\$65,428	Approved	To support the Gurdanji people to establish a sustainable, commercial enterprise based around their commitment to protect, preserve and nurture their country. Funds the appointment of EcOz Environmental Services to manage a program of consultation and planning with the Gurdanji.

Grants - Allocation against Focus Areas

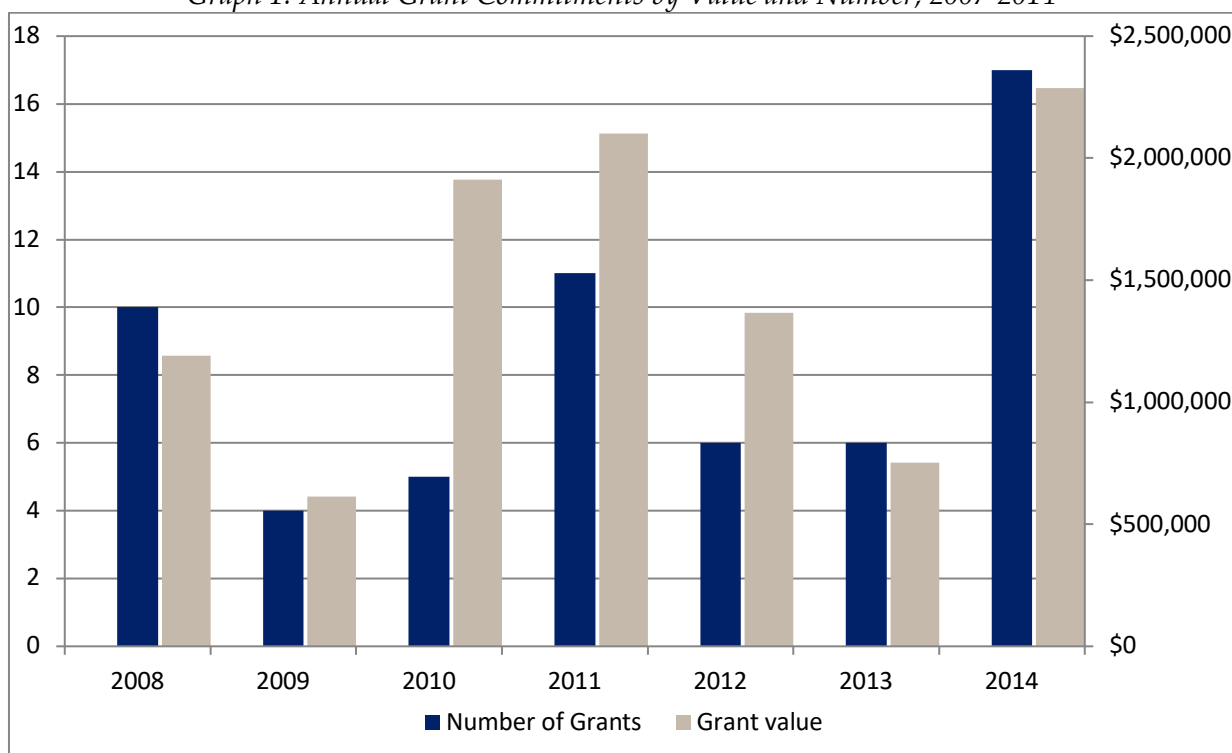
2014 Financial Year

The 2014 financial year was the Trust's most active since its establishment in 2007.

As previously indicated, 17 new grants were approved with a total commitment of \$2,286,275 during the year. This broke records as:

- The highest number of new grants approved by the Trust in one financial year.
- The highest value of grants committed by the Trust in one financial year.

Graph 1. Annual Grant Commitments by Value and Number, 2007-2014



The new grants approved in 2014 cover all 6 focus areas of the Trust and are divided as follows.

Analysis of New Grants by Focus Area and Value, 2014

<i>Focus areas</i>	<i>No. grants</i>	<i>Total grant value</i>	<i>% of total</i>
Enterprise and job creation	2	\$327,362	14%
Education	2	\$456,600	20%
Environment	3	\$440,620	19%
Health	1	\$36,000	2%
Art and culture	5	\$373,839	16%
Social and community development	4	\$651,854	29%
Total	17	\$2,286,275	100%

The areas of Environment and Art and Culture have for the second year in a row, been major areas of focus within the community. Interestingly, Social and Community Development was

the largest area of investment during the year to support the introduction of two new sporting competitions as well as community infrastructure.

The area of health remains the one which has been most difficult to address despite the clear need and demand for additional health services within the community.

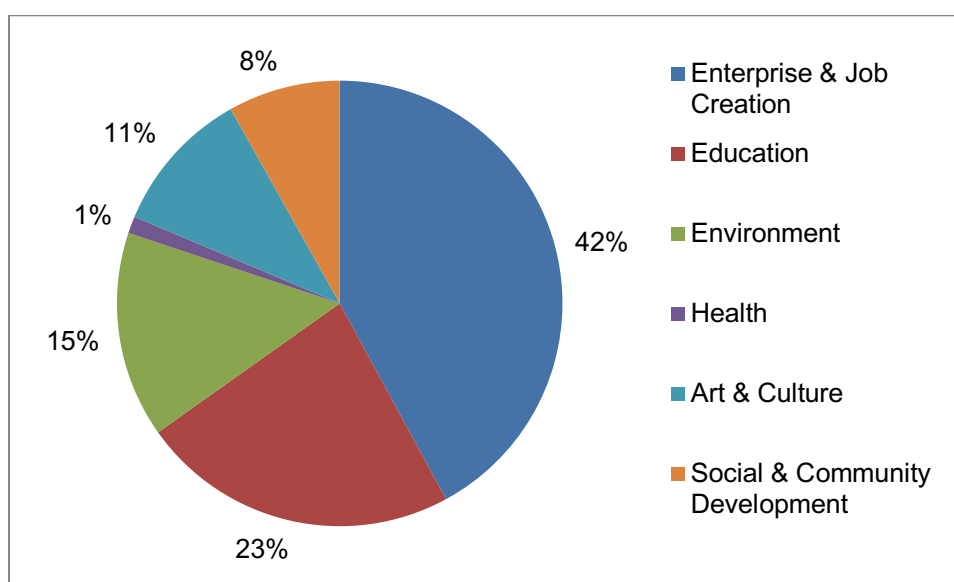
Trust History

The 2014 results bring the total number of grants approved since the formation of the Trust to 60 and the total value committed to \$10 million. The allocation of all grants since the establishment of the Trust is demonstrated below.

Analysis of Grants by Focus Area and Value, 2007-2014

<i>Focus areas</i>	<i>No. grants</i>	<i>Total grant value</i>	<i>% of total</i>
Enterprise and job creation	21	\$4,224,966	42%
Education	7	\$2,319,517	23%
Environment	9	\$1,501,372	15%
Health	3	\$123,437	1%
Art and culture	14	\$1,054,987	11%
Social and community development	6	\$817,285	8%
Total	60	\$10,041,564	100%

Graph 2. Allocation of Grants by Focus Area, 2007 – 2014



Annual Plan Development

In the second half of the financial year, the Trust's *Annual Plan 2015* was developed. The following table outlines the priorities for the year ahead. For full details see the *Annual Plan 2015* at www.mcarthurrivermine.com.au/publications

Commitments	Priority
Enterprise and job creation	<ul style="list-style-type: none"> - Complete the review of the Trust's enterprise development strategy including a regional economic development plan to inform and guide investments in this area. - Establish a mechanism for supporting and nurturing micro-businesses sought to be established by local individuals including education in business. - Prioritise the development of a local private bus service which could support sports programs, school, shopping, training and employment. - Further develop and execute planning for a community based pre-employment program linked with the RJCP Community Action Plan and aiming to get local people into local, sustainable jobs and meet people's interests in regard to practical training, workplace expeditions and community projects such as 'Rubbish Recycle Round Up'.
Environment	<ul style="list-style-type: none"> - Develop the Gurdanji Ranger program to participate in land care, feral weed and animal management, biodiversity monitoring and environmental rehabilitation at MRM and neighbouring properties in the Gurdanji country.
Education	<ul style="list-style-type: none"> - Continue to support the investigation and establishment of a program to engage youth in secondary schooling which may include a student hostel associated with the Borroloola School (subject to NTG policy direction). - To develop opportunities to formalise cultural learning particularly for adolescents.
Social and Community Development	<ul style="list-style-type: none"> - Continue to support programs that focus on youth diversion and engagement to reduce violence, crime and substance abuse. - Actions to address conflict management in the community eg Council of Elders. - Continue to develop the Multipurpose Community Centre as a focal point particularly for youth programs.
Health	<ul style="list-style-type: none"> - Support the development of a range of allied health and wellbeing programs for the region: - Men's and Women's Health - Alcohol and other drugs - Youth counselling, mental health and suicide prevention
Culture and Art	<ul style="list-style-type: none"> - Continue to support the development of a long term vision for art and culture in the gulf region particularly in relation to the proposed Keeping Place by the Waralungku Arts.
MRM target of 20% workforce participation	<ul style="list-style-type: none"> - Conduct a workplace expedition at MRM to make youth aware of job opportunities in mining.
One new local business per year	<ul style="list-style-type: none"> - Note: The Gurdanji Ranger Program noted above under 'Environment' is being developed by MRM and Gurdanji Traditional Owners for this purpose.

4. Financial Report

The Trust's financial position for the year ended 30 June 2014 was audited by Ernst & Young on 21 November 2014. The following information is an extract from their professional report. The full report including all representations was circulated to Directors prior to and tabled at the Annual General Meeting of the Trust on 10 December 2014. The report indicates that as at 30 June 2014, the Trust had closing funds available of \$3,812, 202.

Statement of Receipts and Payments For the Year Ended 30 June 2014

	2014 \$	2013 \$
<i>Receipts</i>		
Donations – McArthur River Mining Pty Ltd	1,350,000	1,350,000
Interest	<u>271,627</u>	<u>302,023</u>
	<u>1,621,627</u>	<u>1,652,023</u>
<i>Payments</i>		
Donations made (see 'Distributions' below)	2,058,460	2,043,017
Operating costs	<u>23,436</u>	<u>29,515</u>
	<u>2,081,896</u>	<u>2,072,532</u>
<i>Net excess/(deficiency)</i>	(460,269)	(420,509)
Opening Funds Held in Trust	<u>4,272,471</u>	<u>4,692,980</u>
Closing Funds Held in Trust	<u>3,812,202</u>	<u>4,272,471</u>

Distributions

Below is a record of the value of all donations made during the financial year by recipient.

Party	Amount \$
Artback NT: Arts Development and Touring	50,000.00
Borroloola School Council	385,000.00
Charitable Foundation for Books in Homes Australia	18,441.65
IE Project (NT) Pty Ltd*	783.70
James Cook University	95,000.00
Mabunji Aboriginal Resource Association Inc	1,010,734.87
McArthur River Mining Pty. Ltd	66,000.00
Mental Health Association of Central Australia	25,000.00
Monash University	20,000.00
Nangala Project Ltd	250,000
Roper Gulf Regional Council	137,500.00
Total	2,058,460.22

* Note: Amount of \$783.70 recorded as donation to IE Project ((NT) Pty Ltd is actually a reimbursement to IE Project for catering costs incurred during MRM CBT Annual plan Consultation Meetings. The 2013/14 chart of accounts for MRM CBT did not have facility to record expenditure other than donations made to grant recipients.

Balance Sheet
As at 30 June 2013

	2014 \$	2013 \$
<i>Closing Funds Held in Trust comprise:</i>		
Cash at Bank	5,449,316	4,907,251
Term Deposits	2,302,472	3,333,270
Trust Assets	7,751,788	8,240,521
<i>Liabilities</i>		
Donations received in advance (for the Multipurpose Community Centre)	3,939,586	3,968,050
Trust Liabilities	3,939,586	3,968,050
<i>Net Trust Funds</i>	3,812,202	4,272,471
 <i>Trust Funds</i>		
Settled sum	100	100
Retained earnings	3,812,202	4,272,371
Total trust funds	3,812,202	4,272,471

Financial and Non-financial Contributions

As required under section 10.3(b) of the Agreement between MRM and the Northern Territory Government for the establishment of the MRM Community Benefits Trust, the following provides details in relation to MRM's financial and non-financial contributions for the financial year. The total contribution by MRM was \$1,507,086.

MRM Financial contributions - 1 July 2013 to 30 June 2014

Item	Description	Cost (\$)
Annual commitment	MRM's annual contribution to the Trust	\$ 1,350,000
Board travel costs	Flights and Accommodation costs	\$6,175

MRM Non-Financial contributions- 1 July 2013 to 30 June 2014

Item	Description	Cost (\$)
Project Officer	Operational, travel and accommodation costs incurred by project staff (not including the consulting value).	\$138,195
Meeting Support	Catering, transport and meeting costs incurred by Trust activities at MRM and in Borroloola	\$12,716

5. Impact on the Community

Key Performance Measures

Key performance measures were established under the 2013 Annual Plan to assess performance against commitments and priorities.

Area	Measures	Status
Governance	Compliance obligations met for MRM investment	✓
	Obligations for reporting met	✓
	Obligations for consultation met	✓
Investment	Percentage of available funds committed (ie MRM annual contribution) to grant programs >85%	✓ 169%
	Percentage of funding spent on administration costs <5%	→
	Spread of grant funding across the region	✓
	Performance against priorities and needs	✓
Project outcomes	Outcomes of grant investments based on project reports	✓

Legend:

- ✓ Delivered
- X Not progressed
- Work continuing

The high level of investment in 2014 was a result of two factors.

Firstly, there were a large number of pending grant submissions as at 30 June 2013 which were not decided upon due to the postponement of the June 2013 Board meeting. Ultimately 6 of the 8 grant submissions carried forward were approved in the 2014 financial year. These had a total value of \$1.2 million.

Secondly, a significant number of new submissions received supported by the introduction of new Project Officers and a resumption of regular services to the community. This followed a degree of disruption and a loss of continuity to the Project Officer function in 2013 which resulted when ill-health caused a unexpected change in Project Officer.

Action Against Community Priorities

The Trust Annual Plan for 2014 set out priorities for the community revealed through consultation. The following table summarises action taken against these priorities.

Commitments	Priority	Status	Action taken
Enterprise and job creation	To support the development of a broader diversity of jobs within the region associated with key infrastructure projects being planned: <ul style="list-style-type: none"> • Multipurpose Community Centre • residential housing developments • alternative accommodation options in Borroloola, e.g. motel • road maintenance and improvement • shipping operations 	→	Multipurpose Community Centre has progressed as per the previous report. Support was provided to Malandari Properties for residential housing support for employees. NT Government continue to work on land clearances to permit residential housing. Proposal received in 2013 from Roper Gulf Shire Council regarding road upgrades and still pending further information.
Environment	Ongoing support for the implementation of the Barni-Wardimantha Awara report as a Yanyuwa Caring for our Country initiative following business planning funded by the Trust in 2012. Initial scoping of a land-based ranger development program with Gurdanji and other interested groups.	✓ ✓	Grant support of \$227,000 provided to continue to progress the Barni Wardimantha Awara plan. Consultation with Gurdanji conducted and grant approved at June 2014 meeting.
Education	Continue to support the investigation and establishment of a youth and/or student Hostel to be associated with the Borroloola School. Support programs that engage with families and parents and encourage them to support their children's education.	→	MRM adviser, Joanne Pafumi nominated by Trust to provide support to the school for proposal development. Work put on hold at request of NT Government while new education policy considered. Australian Government introduced Truancy Program which is focusing on families.
Social and Community Development	To support community needs for improved: <ul style="list-style-type: none"> • public and private housing options; • public transport services; • youth and recreation programs and facilities particularly focused on youth at risk • families and adults. 	✓ ✓ ✓	Housing supported through grant to Malandari Properties. Significant investment in youth and recreation with two sports supported in 2014 – AFL and soccer. AFL program targets both youth and adult players. Bus services also supported through grants to AFL and Borroloola School.

Health	Support the development of a range of health and wellbeing programs for the region: <ul style="list-style-type: none"> - Men's and Women's Health - Alcohol and other drugs - Youth counselling, mental health and suicide prevention 	→ ✓	Planning work underway for Men's Health program. Grant support provided for suicide prevention program.
Culture and Art	Support the development of a long term vision for culture and art within the region including all forms (language, stories, visual and performing arts and events) and all needs (education, protection, commercialisation and development).	✓	5 grants under this focus area targeting: <ul style="list-style-type: none"> - language and stories (Yanyuwa dictionary) - cultural preservation (Keeping and Sharing Place) - cultural heritage protection and education (Garrawa Rock Art) - performing arts (Artback) - music and songs (Gulf Country Songbook)
MRM target of 20% workforce participation	Support the MRM Indigenous Pathways to Employment Strategy	✓	New community-based pre-employment program developed. Trial to be conducted in 2015.
One new local business per annum to supply a product or service to the mine	Ongoing priority to provide support for the business planning and establishment of a new business to be identified based on mine procurement needs.	✓	Gurdanji Ranger Group is meeting an environmental objective but will be a commercial enterprise contracted to the mine.

Legend:

- ✓ Delivered
- X Not progressed
- Work continuing

Appendices

1: Grant Reports

Mabunji and Li-Anthawirriyarra Sea Ranger Unit *West Island Turtle Camp*



In September and October two Turtle Camps were held with full-paying clients attending both camps. While research is a key element of the camps a range of activities are carried out providing tourists with the chance to experience the local culture, get to know the families, fish, relax and of course see the magnificent turtles.

The eco tents provide tourists with a high level of comfort during the camp. Additional levels of accommodation are also available for researchers, rangers and families.

The 2014 camps were hailed as a success with feedback from guests such as being a 'once in a lifetime experience' and 'an amazing opportunity to share and learn about local culture while experiencing some of the most beautiful country'.

A comprehensive Business Plan is being developed and is due for completion December 2014 incorporating figures from the 3rd year trial.

Mabunji and li-Anthawirriyarra Sea Ranger Unit *Barni Wardimantha Awara Yanyuwa Indigenous Protected Area Consultancy*

After a land claim of over thirty years standing, Yanyuwa families have seen ownership of their country acknowledged under the Aboriginal Land Rights Act (1976). This country, the Yanyuwa ancestral domain, encompasses most of the Sir Edward Pellew archipelago as well as substantial delta, riverine and mainland areas in the south west Gulf of Carpentaria.

Since the successful prosecution of these claims, the families have sought some form of viable economic foundation from which to secure an employment future for their children whilst at the same time ensuring the maintenance of the region's abundant cultural and natural values. The result was the Yanyuwa country Plan of Management, developed in 2011, to outline how the Yanyuwa would manage their land and sea country as an Indigenous Protected Area.



The Trust has provided support to this economic development since 2011 and currently through until 2015 with a total of \$389,000.00 committed.

Work to date has included researching and trialling ecotourism opportunities, preparing submissions for funding proposals (many of which have already brought success) and developing partnerships for infrastructure such as Black Rock Landing. It also includes strategic land and sea management planning and the development of a long-term business plan.

Provisions for commercial operations on Aboriginal Land have been finalised with the Northern Land Council (NLC). This will enable the collection of gate receipts from campers at Lhuka/Batten Point as well as allowing for further commercially orientated construction at Jawuma. These developments are conditional on the execution of a Deed of Grant to finalise land tenure. Letters of commitment were received by the NLC CEO and Director of Land Administration NT. These allowed for onsite works at Jawuma to commence with construction completed in July 2014. Enterprises currently underway, notably the annual Turtle Camp. Further refinement will be considered at the culmination of that camp and with the gathering of fees from campers at Batten Point. Outcomes will inform the drafting of the overarching Business Plan to be tabled in late November, early December 2014.

Four Yanyuwa Management Committee (YMC) meetings have been held over the period 1 August 2013 to 2 August 2014. The last of these during which an update on progress was provided and further endorsement for the Family Trust Fund was again sought. On all these occasions, support for the concept was unflagging and unanimous.

Extensive refurbishment of buildings at Centre Island has been completed with maintenance and other work underway on West Island. Research into the cost effectiveness of renovations to other existing structures, notably Yamirri on Kangaroo Island, has been undertaken and appears feasible. Proposed construction of basic bough shades, filleting tables and other amenities at Lhuka and on designated island camp sites, has been researched and negotiated with the Northern Land Council and YMC. Funding for these works is committed with formalisation of the Blue Mud Bay settlement anticipated in October 2014.



Infrastructure completed in 2014 at Black Rock Landing

In 2014 a prospectus has been drafted for use in brokering additional partnerships and will form part of a promotional package to be finalised at the culmination of this year's turtle camp. Once finalised, it will be posted on the Ii-Anthawirriyarra website and will form the mainstay in

future attempts to secure commercial partnerships, subsidies, sponsorships and various forms of funding and other support to progress these economic developments.

Artback NT

Arts Development and Touring

The Trust grant supports the development of Indigenous traditional cultural events in the region by hosting the Indigenous Traditional Dance Project over a three year period.

The program, operated by Artback NT, is now in its second year in Borroloola and has gone from strength to strength. DanceSite Borroloola 2014 was staged at the Showgrounds on Saturday 19th July. There were 127 performers with an approximate audience of 1000+.

ITDP organisers have worked towards supporting each dance group to develop their dance groups to become more performance ready for the DanceSite event. This was delivered through a series of 'Dancing on Country' camps that took each dance group to their traditional lands to teach and promote their dances and song in context to the land from which they were derived.

An extensive media and marketing campaign took place in the lead up which included the distribution of 200 posters, local radio interviews and advertising.

Larrakia Radio provided in-kind support of approximately \$20,000 in radio and television promotion for the three weeks prior to the event. Artback NT was also successful in engaging with NITV with the event being broadcasted on nightly NITV news.

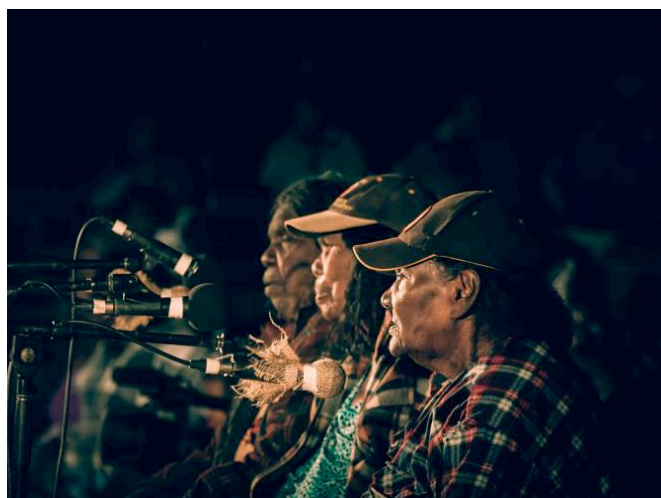
There were many outcomes that were secondary to the execution of the dance programming itself, creating a myriad of community partnerships that strengthened the event and community as a result.

These include:

- Music program of local bands
- Hip hop workshops and performance with Ghenoa Gela
- Showcase of local stories through animations
- Marketplace
- Security engagement
- Men's group engagement
- Decoration making



Red Flag dancers performing at DanceSite 2014. Photo by Benjamin Warlungundu Ellis Bayliss.



Yanyuwa singers (R-L) Roddy Harvey, Dinah Norman & Jemima Miller. Photo by Benjamin Warlungundu Ellis Bayliss.



Ghenoa Gela rehearses with young people in preparation for DanceSite performance. Photo by Benjamin Warlungundu Ellis Bayliss.

Feedback has continued to be positive from local community members, organisations, traditional owners, key stakeholders and the media, indicating that DanceSite is a successful community collaboration with community excited to continue to develop and take ownership over the event in the future.

Waralungku Arts Centre *Songbook*

Following on from the highly successful Song People's sessions and the Musecolgy project (supported by the Trust), this year has seen the extension of these projects to include the development of 'Songbook'.

The Gulf Country Songbook will celebrate a selection of non-ceremonial songs and related knowledge of Yanyuwa, Marra, GudANJI and Garrwa peoples, and honour their ancestors and connection to country. It is intended as both a resource for people of the Borroloola region to encourage the passing on of languages, songs and culture and as a product to be sold to non-Indigenous residents and tourists.

The copyright and benefit sharing agreements are currently being drafted and will be shared and discussed with community participants in September/October 2014.

A significant number of historical photos have been located and sourced, and approved for inclusion in the book by senior knowledge holders. Explanatory stories of the songs, biographies of composers and singers have also been included.

Approved at the March Board meeting, Songbook will provide a resource as an ongoing collection of non-ceremonial songs and related knowledge of Yanyuwa, Marra, GudANJI and Garrwa peoples honouring their ancestors and connections to country.



Marra singer and composer Fannie Yilayi Harrison and Family with Salome Harris (Coordinator, Ngukurr Language Centre), Cox River, July 2014.



Violet and Rhoda Hammer at Bauhinia Downs on the site of their former home and the place where Marra dance songs were created; near Limmen Bight; June 2014.



The homestead at Bauhinia Downs in the 1960s. Image courtesy Keith Adams, Northern Safari.



Topsy Green Inganjuba with Jiwanjangu, the Dreaming Tree in the Nguwalinya songs, at Creswell Downs; August 2014



The site where Adie Miller's grandmother lived in the 1960s when the Nguwalinya songs came to her, on Creswell Downs Station (Waanyi country); August 2014.



Gudanji participants Elizabeth Lansen, Katie Baker, Peggy Mawson, Adie Miller and Topsy Green selecting and checking photos at Waralungku Arts; July 2014.



Harold Miller blowing a rabijinda (conch shell), signalling a successful hunt. Image courtesy John Bradley.



Joanne Miller with family, selecting and checking historical Yanyuwa photos; July 2014.

Roper Gulf Shire Council *Borroloola Pool Maintenance*

The Trust has provided support to the Roper Gulf Shire Council since 2011 to assist in covering the cost of consumables and utilities (power and water) for the more than 15,000 swimmers welcomed each year through the pool gates.

This supports the operation of the Borroloola Swimming Pool Complex as it develops its sustainability as a business enterprise, providing employment and health objectives within the community.

McArthur River Mining *Pathways to Employment*

MRM has undertaken an Indigenous employment and training program since operations commenced in 1995.

Since 1995 various strategies and programs have been implemented to achieve and maintain this level of employment. With the planned expansion to the mine and the feedback from the Borroloola community, MRM through the Community Benefits Trust, received a grant of \$163,262.00 to design and implement a broader level program to meet community employment needs as a whole.

The project came about through the recognition that there is a common base of specific skills and competencies to develop which meet the needs of all employers. The initial stage of this project will look at developing these skills for a trainee position at the mine or with other employers in the Gulf region.

Program development has been completed with the implementation stages planned to commence in the 2014/15 financial year.

Borroloola School Council *Breakfast Program*

Borroloola School has been funded to deliver a breakfast program over three years from 2012 to 2015. The aim of the program is to improve overall student attendance and participation rates.

The program runs for school children from 7.00am to 8.30am. Two staff members as well as community members assist with delivering the program each day. Breakfast items are consistent with Healthy Food nutritional guidelines and may consist of cereals, juice, milk, fruit, eggs, bacon, bread and a variety of spreads.

In Terms One and Two 2014, the average daily participation rate was 75 students with an average of 6-7 parents and community members supporting the program daily.

This program is well received by the Community and is providing tangible outcomes.

James Cook University *Looking for Dugong project*

The project is now underway and the agreement was executed in 2013.

A workshop with Traditional Owners, Sea Rangers and relevant stakeholders was held on 26 November 2013 with a follow up presentation delivered on 20 February 2014.

A review of the Research Partnership Agreement has been drafted and approved by the Ii-Anthawirriyarra Ranger Coordinator and is awaiting final comments and signatures by relevant parties.

A manuscript summarising all baseline data has been submitted to the international journal – Biological Conservation.

Training of rangers took place over a two day period, 2-3 April 2014, which included one day of boat-based vessel surveys to trial survey methods and techniques and in-class presentations. At the end of the in-class training, a dolphin survey kit sponsored by the McArthur River Mines Community Benefits Trust was donated to Ii-AnthaWirriyarra Rangers, to facilitate future independent boat-based surveys.

A further six days of boat-based surveys took place around the Sir Edward Pellow Island Group and Limmen Bight Region.

MusoMagic – an educational music orientated group – is scheduled to attend Borroloola School emphasising a conservation message to school children.

Mabunji Aboriginal Resource Association Inc *Yanyuwa Dictionary*

Gaining support of the Trust at the August 2013 Board Meeting, The Yanyuwa Encyclopaedic Dictionary project is a publication-ready extensive and community-accessible resource of the Yanyuwa language and Yanyuwa cultural knowledge.

Distilling over 50 years of committed work by and with the Yanyuwa community, it has been brought to fruition by Associate Professor John Bradley, who has been working with Yanyuwa elders for the last 33 years, building on material gathered by the late missionary linguist Jean Kirton.

The final draft of the Yanyuwa Dictionary comprises: a historical overview of the Yanyuwa people and language; over 4000 entries (many illustrated); an English-Yanyuwa word finder; a large body of texts recorded over the years with Yanyuwa men and women; as well as a collection of 150 song poems.

Melbourne-based Australian Scholarly Publications (ASP) will be publishing. Cover design and final layout is complete for the two volume edition. The publication and launch are expected to take place in 2015.

Mabunji Aboriginal Resource Association Inc *Keeping and Sharing Place*

Waralungku Arts, a division of Mabunji Aboriginal Resource Association Inc, has been successful in delivering the Keeping Place Project phase 1 and 2, supported by the Trust in 2013. They are responsible for leading the current project which is in its third phase.

A planning committee has now been established and the first official committee meeting took place on 29th July.

The development of collection protocols are underway with meetings having been held with expert advisors to establish the way forward and the sourcing of example documents is in progress.

Inventory of items to date has been completed. A template for registration of documents is also in development. Written procedures for inventory management will be detailed in the Procedures Manual (for completion early 2015).

Nangala Project *Indi Kindi*

The Indi Kindi program aim is to prepare children under six years old for literacy and numeracy, offering them a better chance of reaching basic Australian educational benchmarks.

The program is currently undergoing a formal enrolment drive in Robinson River. In Borroloola (and surrounding outstations) there are a total of 144, 0-5 year old children, almost all enrolled at Indi Kindi. In Robinson River there are an estimated 25 children in the target age range of 0-5.

Indi Kindi now employs four permanent employees – three in Borroloola and one in Robinson River. An expansion of the program has seen services double and currently include 2 sessions per day, with the new session emphasising the sound skill and language development so essential to school success.

Indi Kindi promotes family involvement and has increased presence at community events and advertising through community noticeboards and social media.

The introduction of daily program write-ups has enabled the identification of children most at risk of educational vulnerability. These children are now being offered some individual support within the program.

A daily roll is used to track attendance patterns and from these children are being identified for case study research to track individual achievement over the pre-school years.

Indi Kindi is fully operational in Robinson River. Borroloola based staff have previously travelled to deliver service there is now one local staff member with another being actively recruited. A close relationship has been established with the Robinson River School, which has provided storage space for equipment and is providing computer and printing access. Flyers are distributed throughout the school and crèche to inform of the Indi Kindi schedule.

Fruit and water are served at every session. Parents comment on their children's enjoyment of the fruit, which enables staff to further explain healthy eating. Hygiene practices are followed as part of this routine.

Nangala Project

John Moriarty Football

John Moriarty Football engages 6-14 year old boys and girls by using football (soccer) to improve school attendance (no school – no football rule in place) and achieve sustainable healthier outcomes for families and communities.

There has been an increase of 90 players participating in training and competitions between 2013 and 2014.

2014 saw up to 10 community members involved with training, competition games, intrastate and overseas tours with ongoing mentoring of local Indigenous children at various times throughout the year. Internal competitions are held on weekends with the whole community invited to attend with an end of school term Cup Day.

Employment consists of 1 full-time community member (coach) and 2 community members employed as assistant coaches.

Further development and talent identification is encouraged through advanced training sessions. From these sessions many girls and boys have been selected for higher honours within Football Federation Northern Territory and Northern Territory Schools representative teams.

There was an increase of 7 players in the talented player squad over the year. 2014 has 22 players involved as part of the advanced training squads, with 3 sessions per week in Terms 1, 2 & 3 and 2 sessions per week in Term 4.

A trip to the 2014 FIFA World Cup held in Brazil was organised for 8 young talented players. This was funded through specifically sourced corporate donations and was outside of the scope funded by the MRM Community Benefits Trust.

Football Federation Northern Territory has notified that they can send an Instructor into Borroloola in October 2014 to do FFA Community Grassroots Certificates, Skills Training and Game Training Certificates. Currently scheduling players to attend.

Transport is delivered for up to 200 people per week on approximately 30 combined pick up and drop offs.

Food and drinks with nutritional value including sandwiches, fruit and water are provided to players.

Monash University

Garrwa Rock Art Sites

The Garrwa Stone Country Rock Art Project received the support of the Trust at the December 2013 Board Meeting.

The aims of the project are to:

- Work in partnership with senior Traditional Owners from a specific area of Garrwa stone country to introduce younger generations to the cultural significance of rock art;
- Preserve and transmit knowledge about rock art (i.e. stories, songs) from Garrwa stone country to younger generations through a range of educational resources;
- Integrate information about rock art into the Waralungku Arts Centre to provide new resources for practicing artists and general information for tourists and visitors about the cultural significance of rock art from the Borroloola region.

Field trips and recording are underway.

Mental Health Association

Suicide Story

Suicide Story is a suicide prevention program developed specifically for remote Aboriginal communities in the Northern Territory. This project was approved by the Trust at the December 2013 Board Meeting and consists of a three-day workshop.

The Mental Health Association delivered the workshop in Borroloola from 28-30 July 2014. The three-day workshop was well received by the community as demonstrated by local response and participant feedback. Prior to workshop delivery, 73% of program participants could identify some of the warning signs of suicide compared to, 91% at the conclusion of the program.

Overall, the Suicide Story program delivery in Borroloola was a success. The group collaborated to put in place safety and action plans to ensure program learnings were transferred into practical and sustainable strategies tailored to the Borroloola community. In closing workshop activities, the group worked collectively to develop a Community Safety Plan; a community-mapping tool identifying local resources for both suicide prevention and intervention needs

Gulf Health Services

Borroloola AFL

Approved by the Trust at the March 2014 Board Meeting, the Gulf Aussie Rules Football Programme will establish local regional AFL league competition involving teams from Borroloola and Robinson River.

A full time Regional Development Manager has been appointed and the program is becoming established with a great response from community members.

Malandari Properties

Staff Housing

The Malandari Aboriginal Staff Accommodation Project gained support from the Trust at the March 2014 Board Meeting.

Housing requirements have been reviewed and the design for 3 x 2 bedroom houses has now been finalised. Cairns Industries are completing drawings and finalising pricing, expected to be completed by end September.

NBC architects will submit drawings with approval anticipated by the end of October.

Construction is due to commence around late October with completion around March 2015. Cairns Industries will provide engineering drawings/self-certification to comply with the Building Code.

Borroloola Fire and Emergency Response Group (FERGS)

Facility Upgrade

The Borroloola FERGS Facility Upgrade Project was approved by the Trust at the March 2014 Board Meeting. The project will see construction of a new shed for the Borroloola Fire and Emergency Response Group unit (based on the grounds of the Borroloola Police Station) and be used to house several vehicles along with equipment and allowing room for meetings and training to be held in suitable undercover environment.

The improved facilities will allow the FERGS unit to expand on current equipment and assets and ensure they are securely stored.

The shed is in Borroloola awaiting installation and due to be completed by the end of the year.

Kiana School

Breakfast Program

Approved by the Trust at the June 2014 Board Meeting, the Breakfast Program caters for preschool – Year 6 students (currently 13) of Kiana School, a one-teacher school located on Kiana Station.

A variety of healthy breakfast foods are provided with the aim to increase school attendance and encourage future enrolments. A progress report is to be provided by December 2014 to outline these statistics.

McArthur River Mine and Gurdanji Traditional Owners

Gurdanji Rangers Group

MRM has partnered with Traditional Owners of the Gurdanji people in the establishment of the Rangers Group. The project gained the support of the Trust at the June 2014 Board Meeting.

The objective is to work with the Gurdanji people assisting in building a sustainable, commercial enterprise based around their commitment to protect, preserve and nurture their country.