

# NOBU

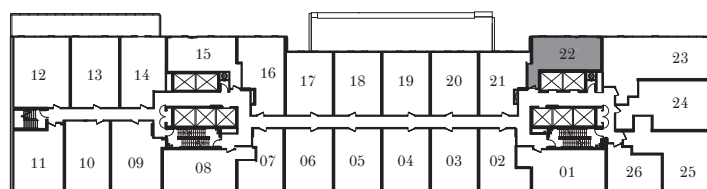
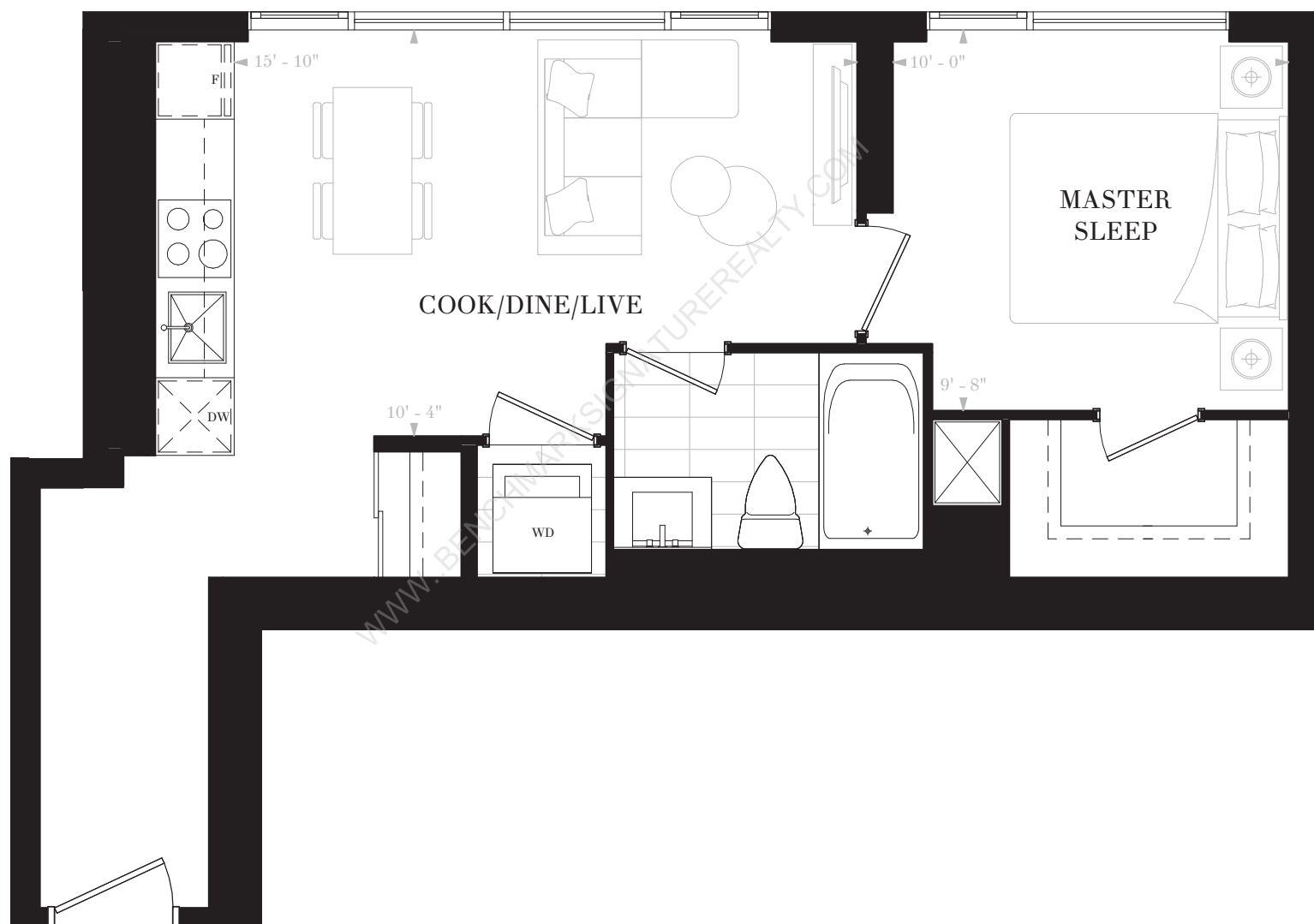
RESIDENCES  
TORONTO

## SUITE P1C

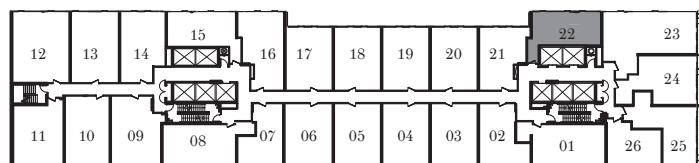
1 BEDROOM

1 BATH

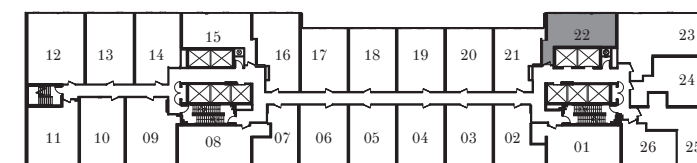
INTERIOR: 534 SF



FLOOR 3



FLOOR 4



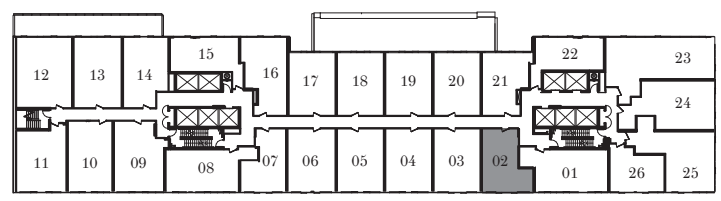
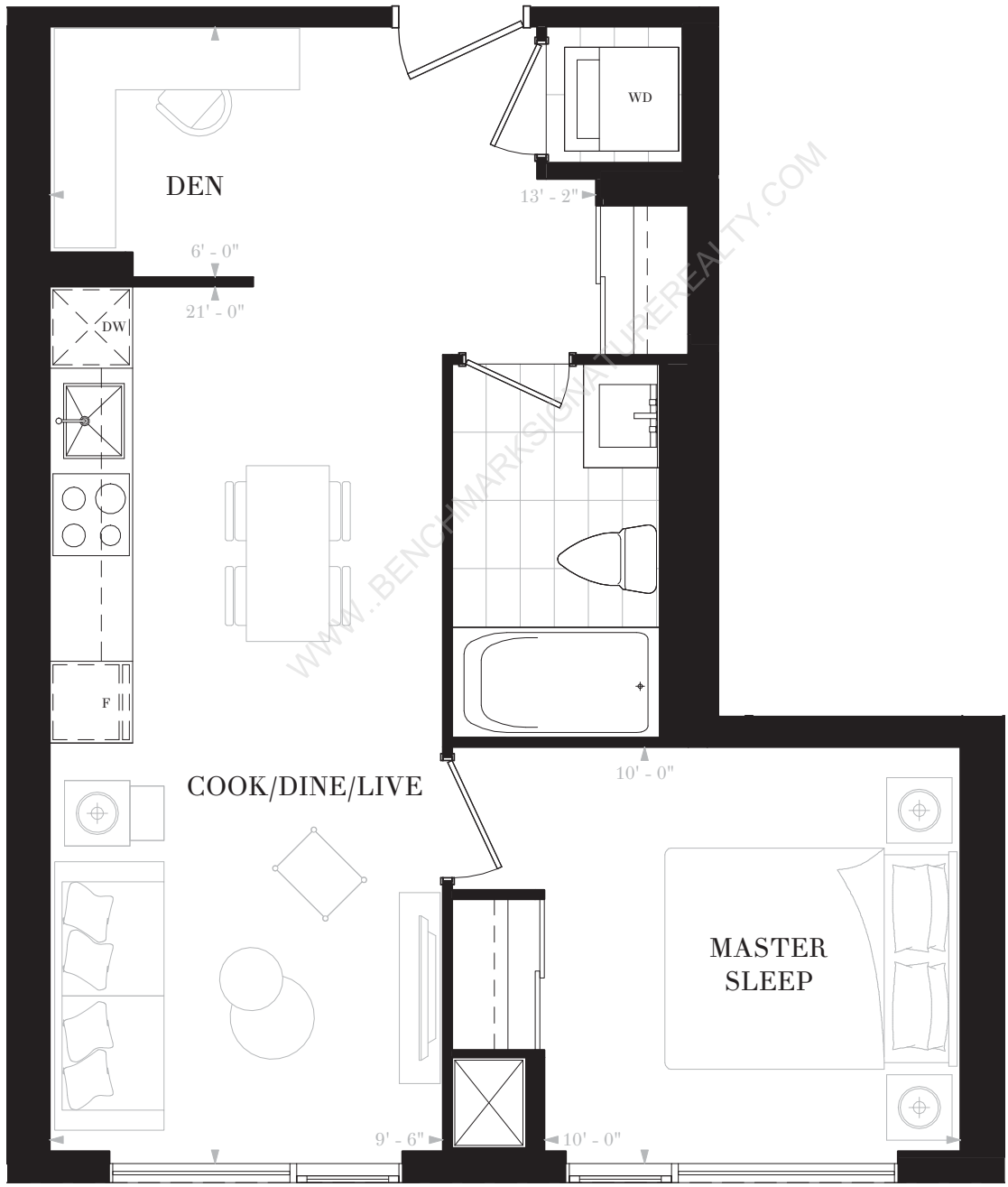
FLOOR 5

Any stated areas and/or dimensions shown are approximate only and subject to normal construction variances. Actual usable floor space may vary from any stated or depicted floor area. The layout of the suite may be reversed depending on the location of the unit within the project. Any furniture depicted is for illustration purposes only and does not necessarily reflect the electrical plan of the unit. Windows behind the cladding, installed as a design element, may be spandrel or vision glass. The view from or through the windows to the exterior may be partially obstructed by materials affixed to the exterior cladding of the building as part of an overall design element. Any and all sizes and/or specifications are subject to change without notice. All illustrations are artist's concept only. E. & O. E. May 2017

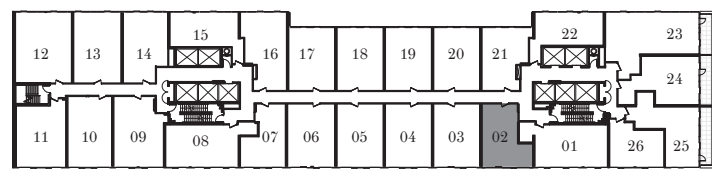


**NOBU**  
RESIDENCES  
TORONTO

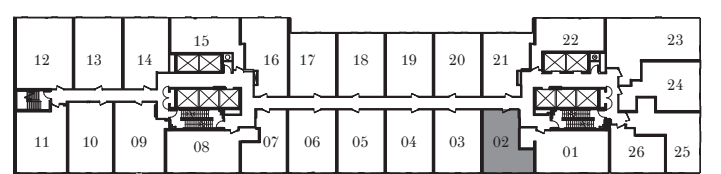
**SUITE P1D**  
1 BEDROOM & DEN  
1 BATH  
INTERIOR: 536 SF



FLOOR 3



FLOOR 4



FLOOR 5

Any stated areas and/or dimensions shown are approximate only and subject to normal construction variances. Actual usable floor space may vary from any stated or depicted floor area. The layout of the suite may be reversed depending on the location of the unit within the project. Any furniture depicted is for illustration purposes only and does not necessarily reflect the electrical plan of the unit. Windows behind the cladding, installed as a design element, may be spandrel or vision glass. The view from or through the windows to the exterior may be partially obstructed by materials affixed to the exterior cladding of the building as part of an overall design element. Any and all sizes and/or specifications are subject to change without notice. All illustrations are artist's concept only. E. & O. E. May 2017



# NOBU

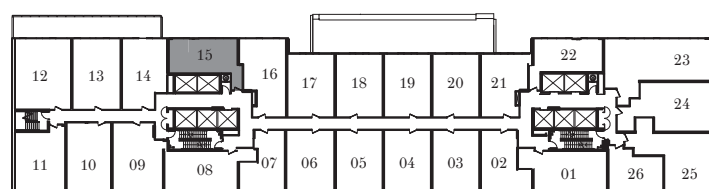
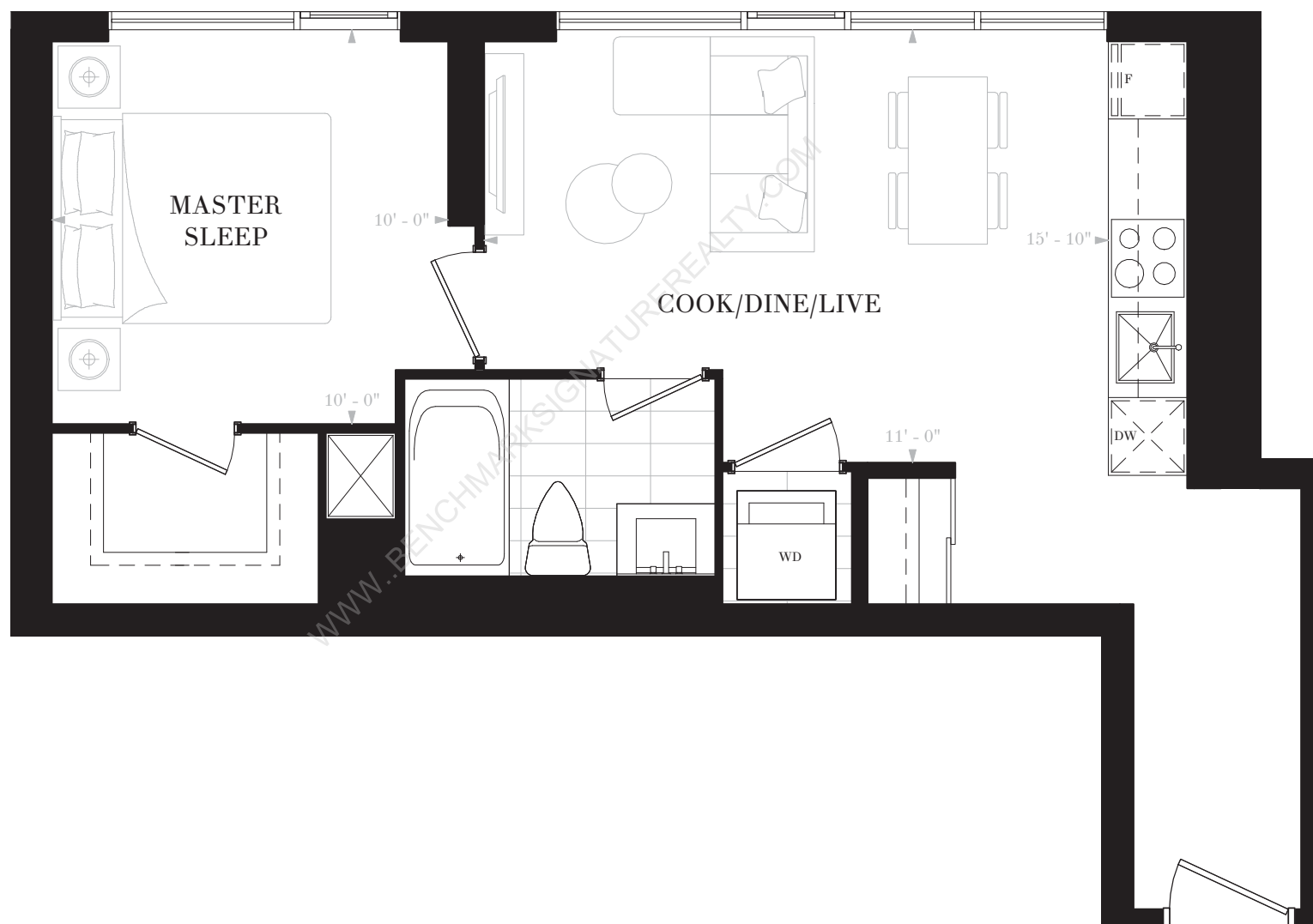
RESIDENCES  
TORONTO

## SUITE P1E

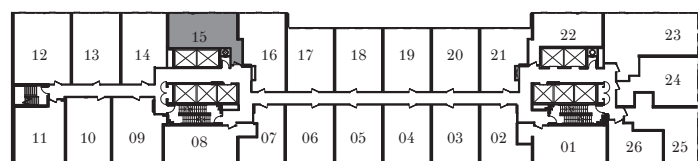
1 BEDROOM

1 BATH

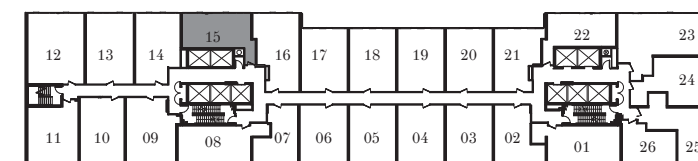
INTERIOR: 545 SF



FLOOR 3



FLOOR 4



FLOOR 5

Any stated areas and/or dimensions shown are approximate only and subject to normal construction variances. Actual usable floor space may vary from any stated or depicted floor area. The layout of the suite may be reversed depending on the location of the unit within the project. Any furniture depicted is for illustration purposes only and does not necessarily reflect the electrical plan of the unit. Windows behind the cladding, installed as a design element, may be spandrel or vision glass. The view from or through the windows to the exterior may be partially obstructed by materials affixed to the exterior cladding of the building as part of an overall design element. Any and all sizes and/or specifications are subject to change without notice. All illustrations are artist's concept only. E. & O. E. May 2017



**NOBU**  
RESIDENCES  
TORONTO

**SUITE P1H**

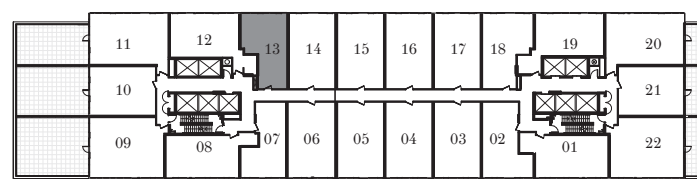
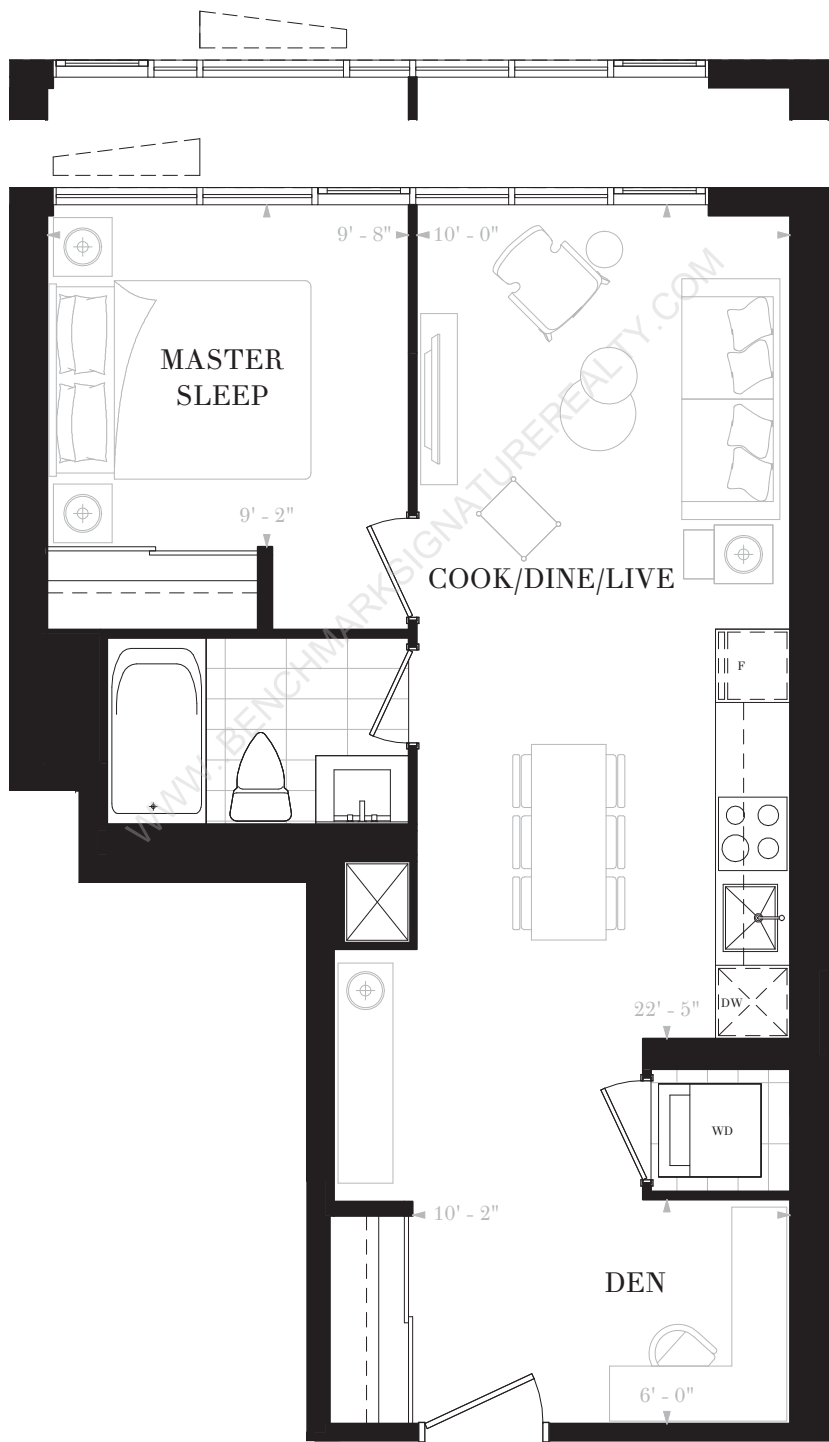
1 BEDROOM & DEN

1 BATH

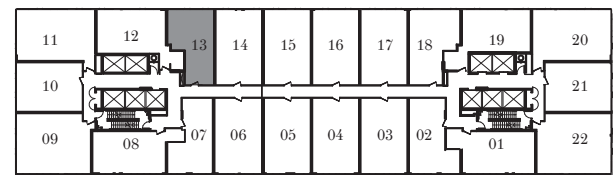
INTERIOR: 581 SF

FLOOR 8

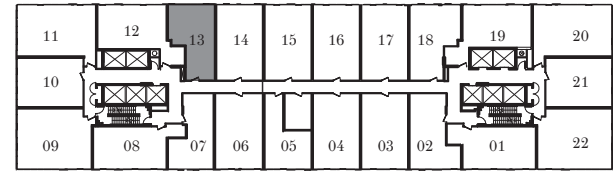
FLOORS 6-7



FLOOR 6

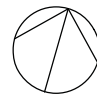


FLOOR 7



FLOOR 8

Any stated areas and/or dimensions shown are approximate only and subject to normal construction variances. Actual usable floor space may vary from any stated or depicted floor area. The layout of the suite may be reversed depending on the location of the unit within the project. Any furniture depicted is for illustration purposes only and does not necessarily reflect the electrical plan of the unit. Windows behind the cladding, installed as a design element, may be spandrel or vision glass. The view from or through the windows to the exterior may be partially obstructed by materials affixed to the exterior cladding of the building as part of an overall design element. Any and all sizes and/or specifications are subject to change without notice. All illustrations are artist's concept only. E. & O. E. May 2017



# NOBU

## RESIDENCES

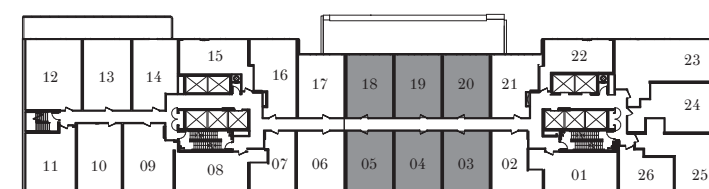
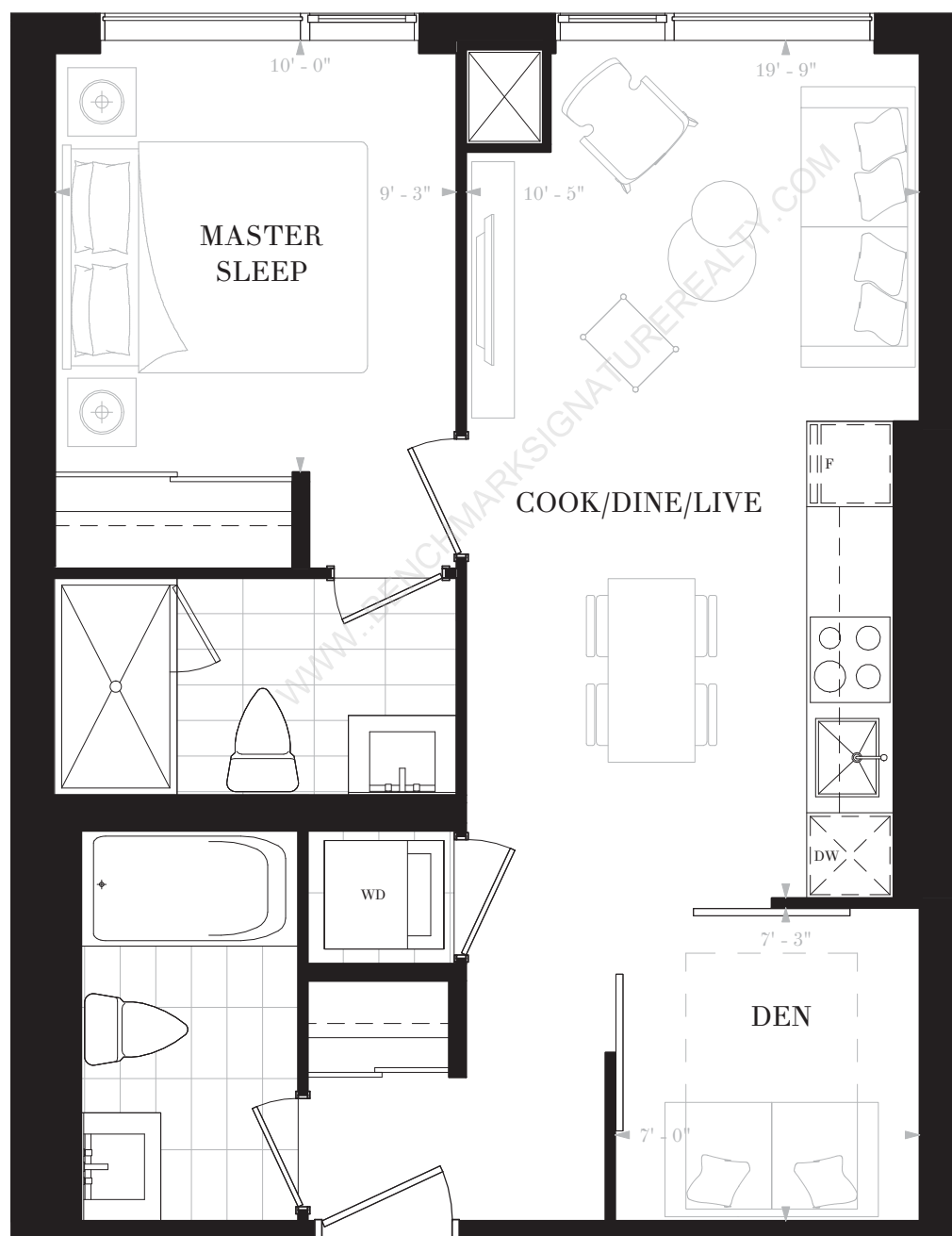
### TORONTO

#### SUITE P1J

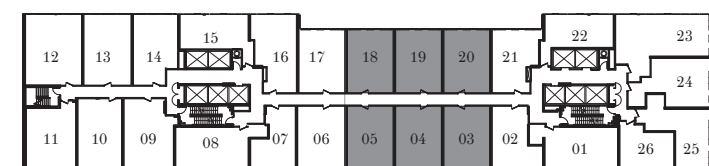
1 BEDROOM & DEN

2 BATHS

INTERIOR: 594 SF



FLOOR 3



FLOOR 4



FLOOR 5



# NOBU

## RESIDENCES

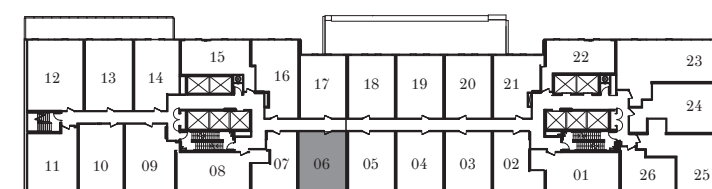
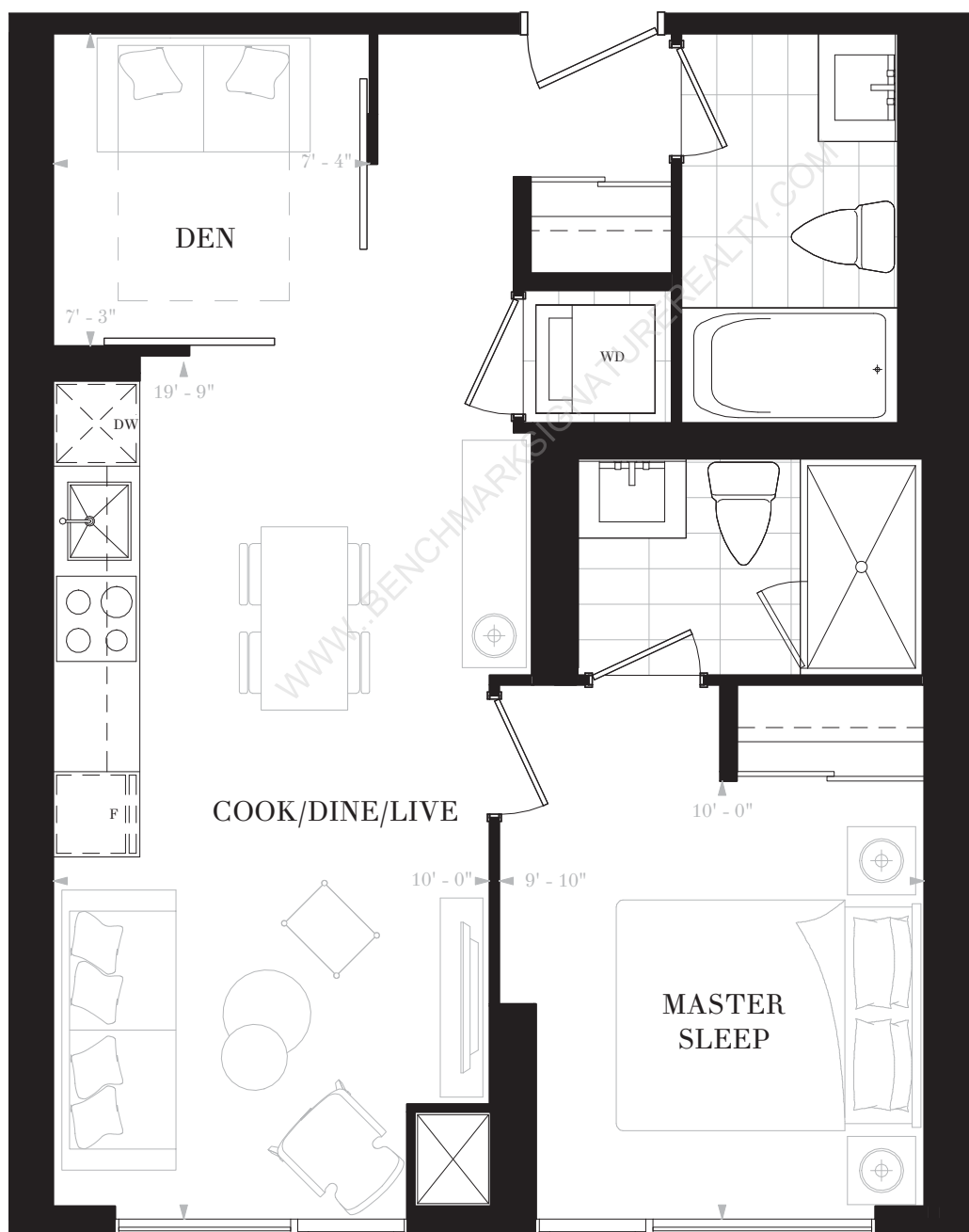
### TORONTO

#### SUITE P1M

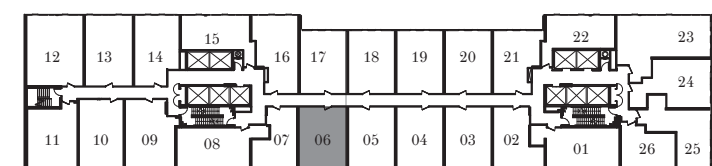
1 BEDROOM & DEN

2 BATHS

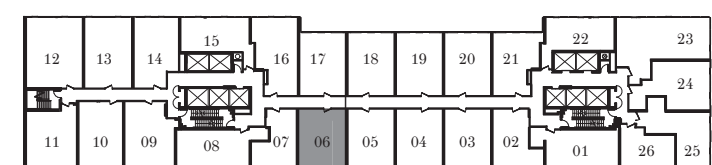
INTERIOR: 608 SF



FLOOR 3



FLOOR 4



FLOOR 5

Any stated areas and/or dimensions shown are approximate only and subject to normal construction variances. Actual usable floor space may vary from any stated or depicted floor area. The layout of the suite may be reversed depending on the location of the unit within the project. Any furniture depicted is for illustration purposes only and does not necessarily reflect the electrical plan of the unit. Windows behind the cladding, installed as a design element, may be spandrel or vision glass. The view from or through the windows to the exterior may be partially obstructed by materials affixed to the exterior cladding of the building as part of an overall design element. Any and all sizes and/or specifications are subject to change without notice. All illustrations are artist's concept only. E. & O. E. May 2017



# NOBU

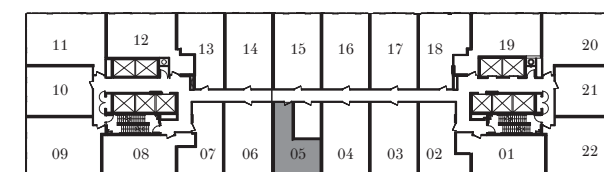
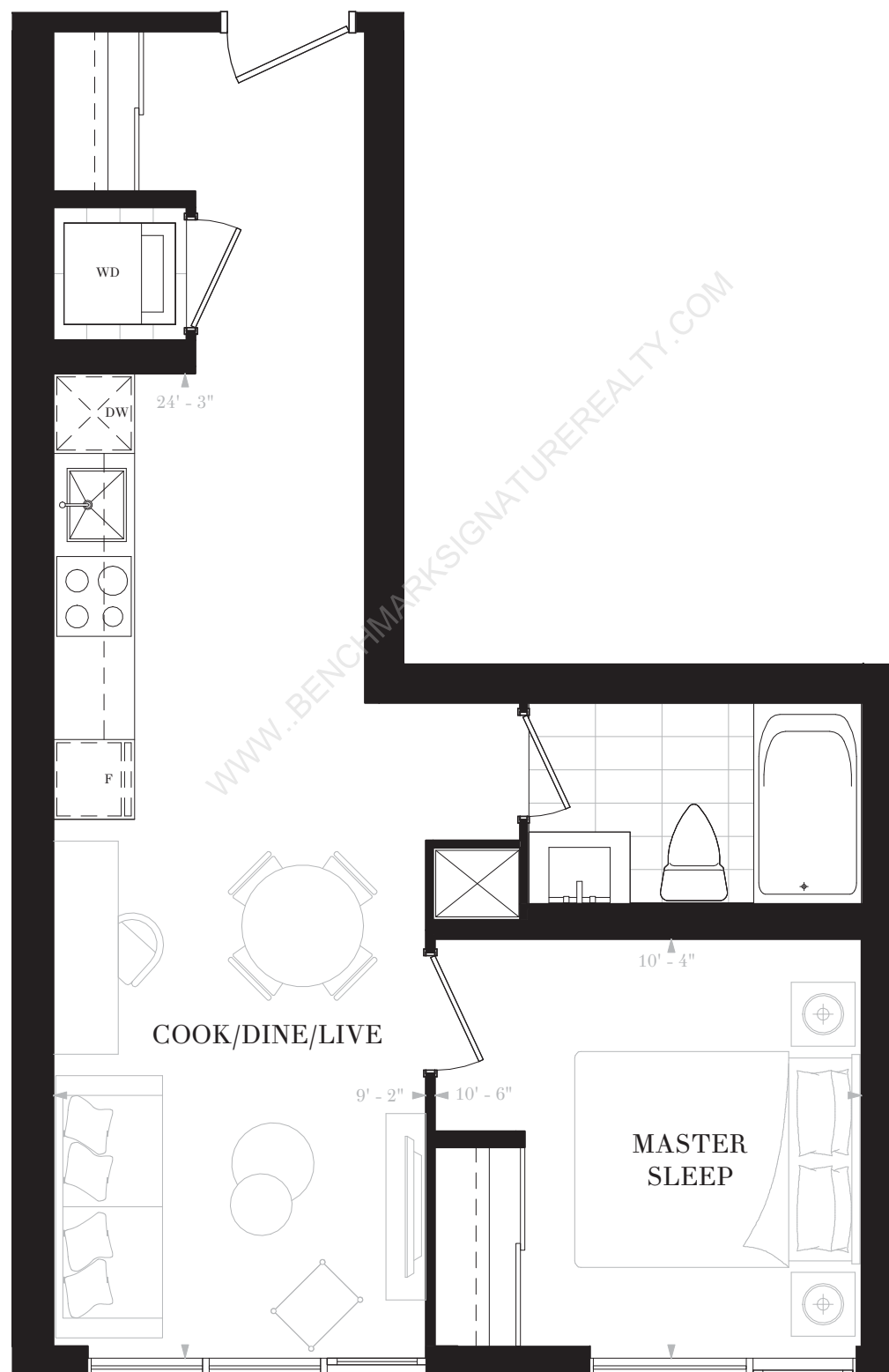
RESIDENCES  
TORONTO

SUITE P1Q

1 BEDROOM

1 BATH

INTERIOR: 504 SF



FLOOR 8



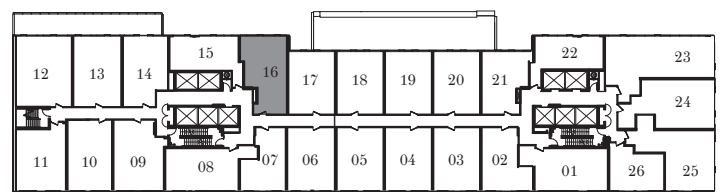
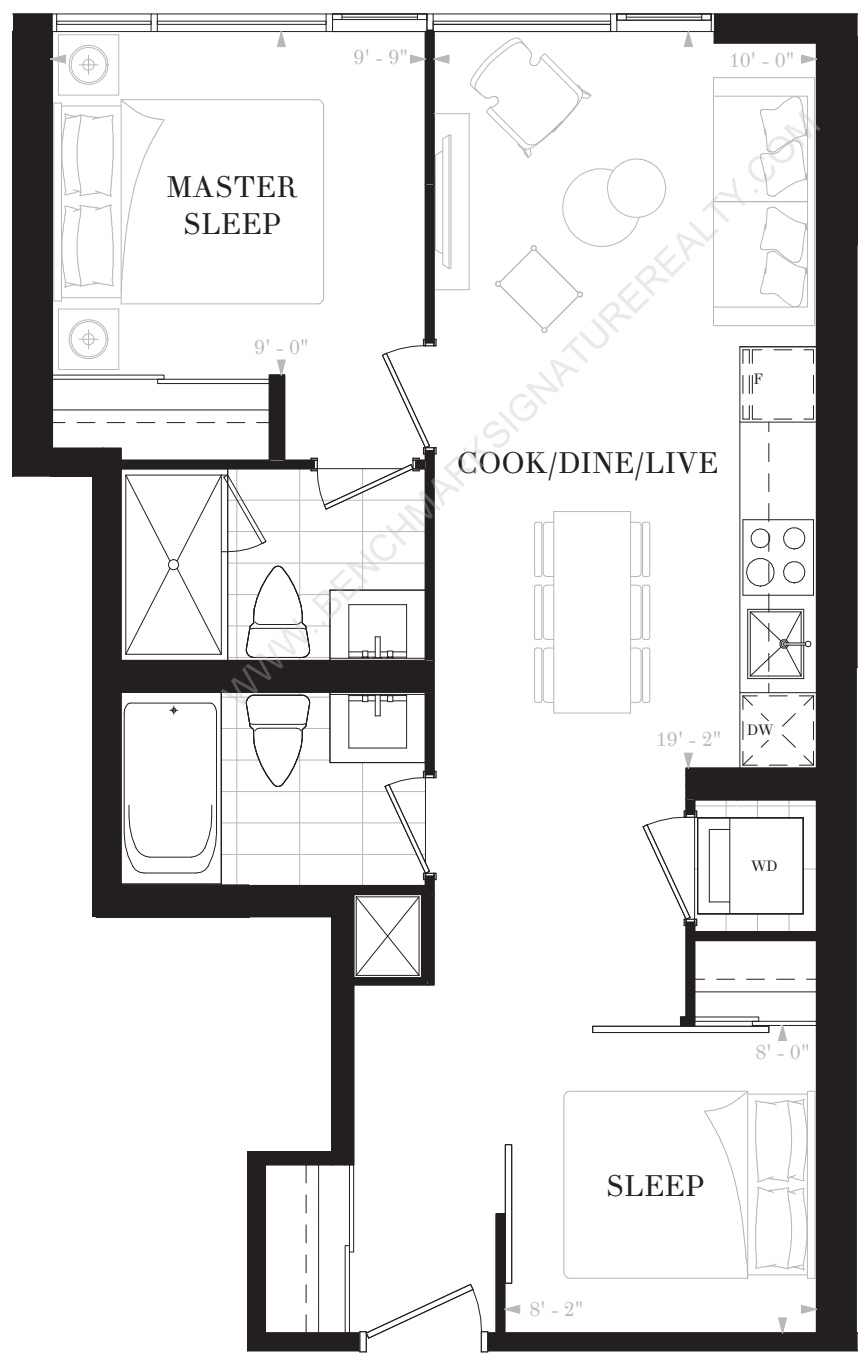
**NOBU**  
RESIDENCES  
TORONTO

**SUITE P2C**

2 BEDROOMS

2 BATHS

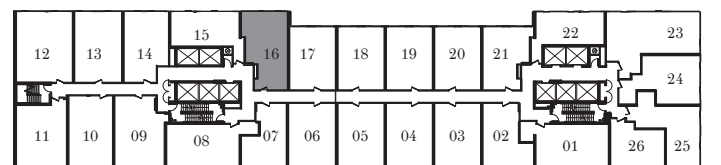
INTERIOR: 639 SF



FLOOR 3

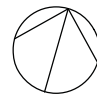


FLOOR 4



FLOOR 5

Any stated areas and/or dimensions shown are approximate only and subject to normal construction variances. Actual usable floor space may vary from any stated or depicted floor area. The layout of the suite may be reversed depending on the location of the unit within the project. Any furniture depicted is for illustration purposes only and does not necessarily reflect the electrical plan of the unit. Windows behind the cladding, installed as a design element, may be spandrel or vision glass. The view from or through the windows to the exterior may be partially obstructed by materials affixed to the exterior cladding of the building as part of an overall design element. Any and all sizes and/or specifications are subject to change without notice. All illustrations are artist's concept only. E. & O. E. May 2017





# NOBU

## RESIDENCES

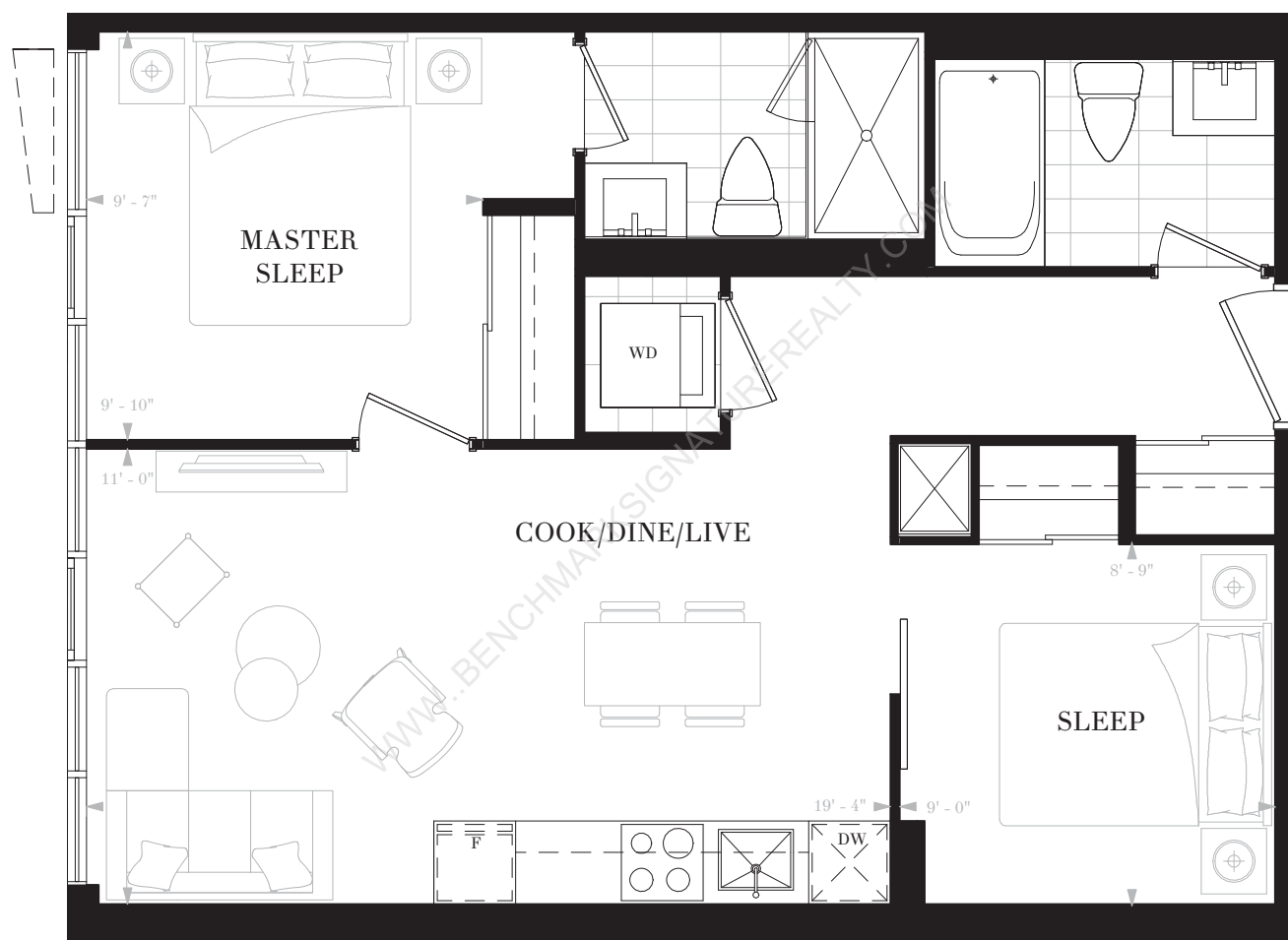
### TORONTO

#### SUITE P2E

2 BEDROOMS

2 BATHS

INTERIOR: 652 SF



SUITE 710



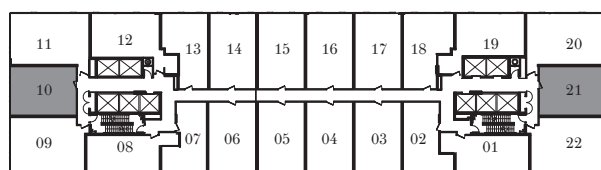
SUITE 821, 904



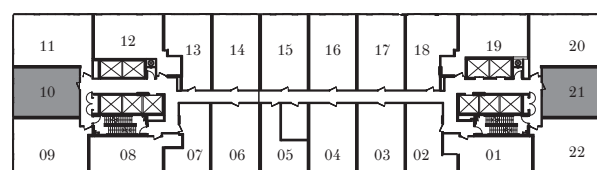
SUITE 810, 908



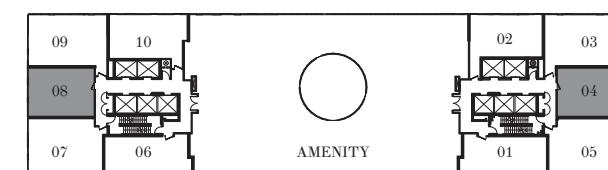
SUITE 721



FLOOR 7



FLOOR 8



FLOOR 9



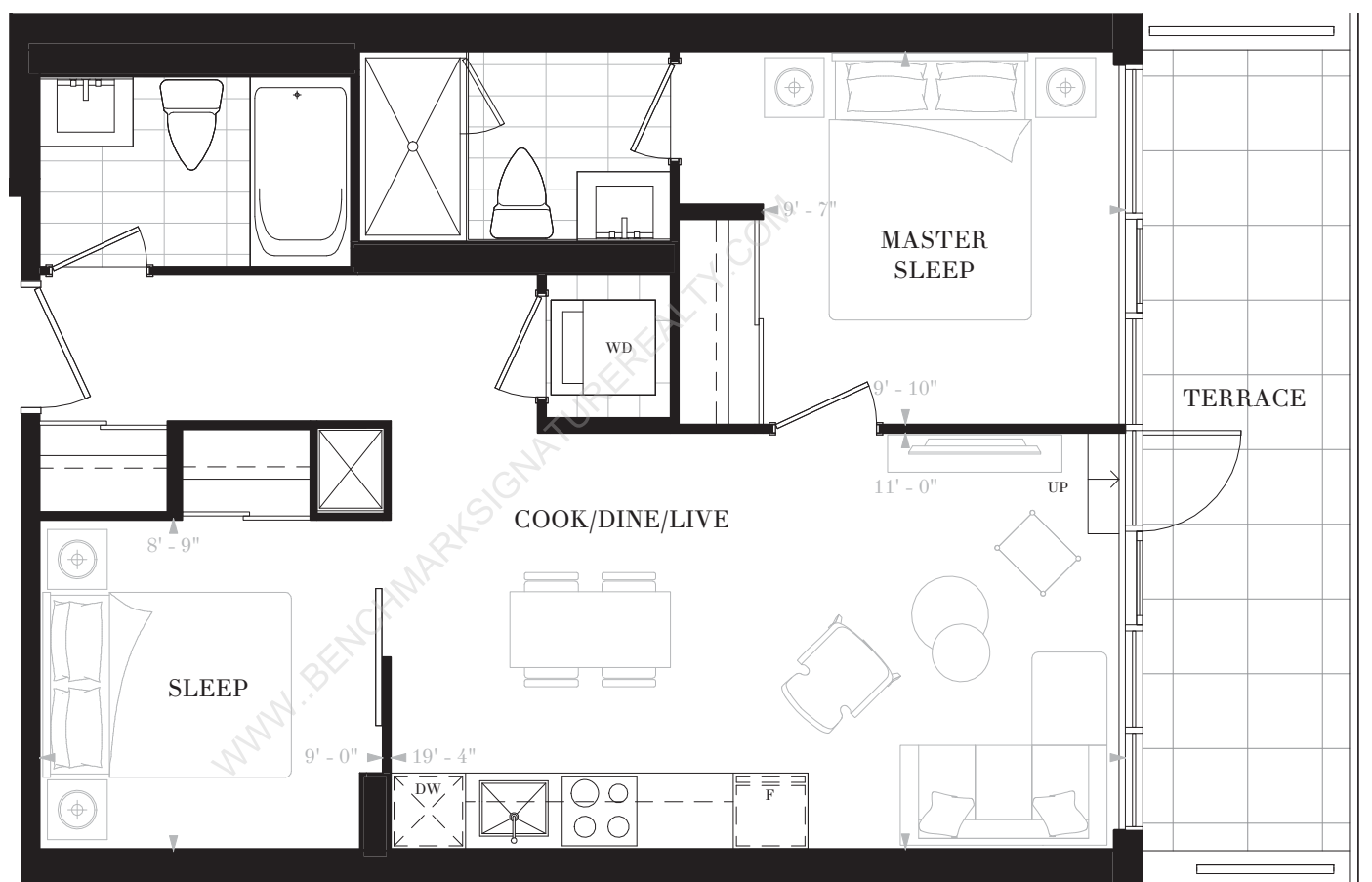
# NOBU

## RESIDENCES

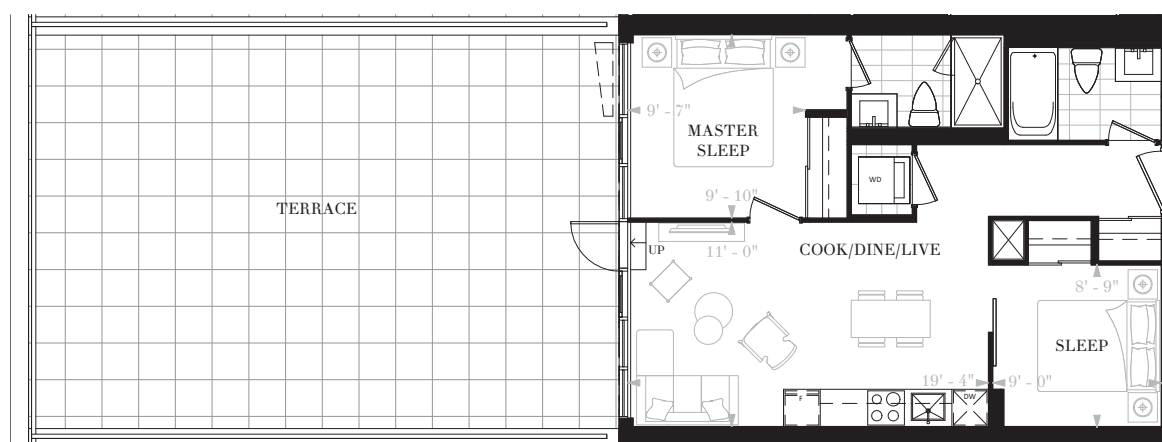
### TORONTO

**SUITE P2E(T)**  
2 BEDROOMS  
2 BATHS

**SUITE 621**  
INTERIOR: 652 SF  
TERRACE: 125 SF  
TOTAL: 777 SF

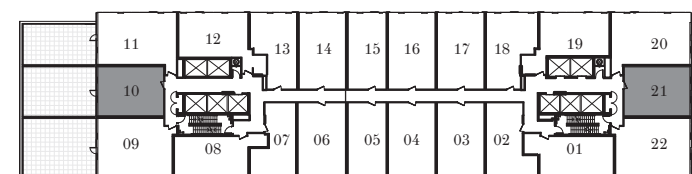


SUITE 621



SUITE 610

**SUITE 610**  
INTERIOR: 652 SF  
TERRACE: 699 SF  
TOTAL: 1351 SF



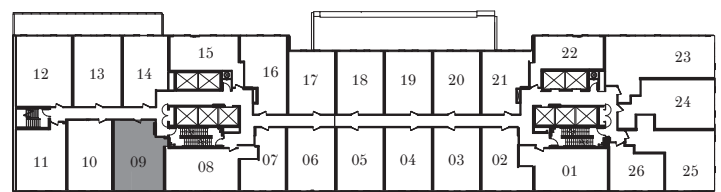
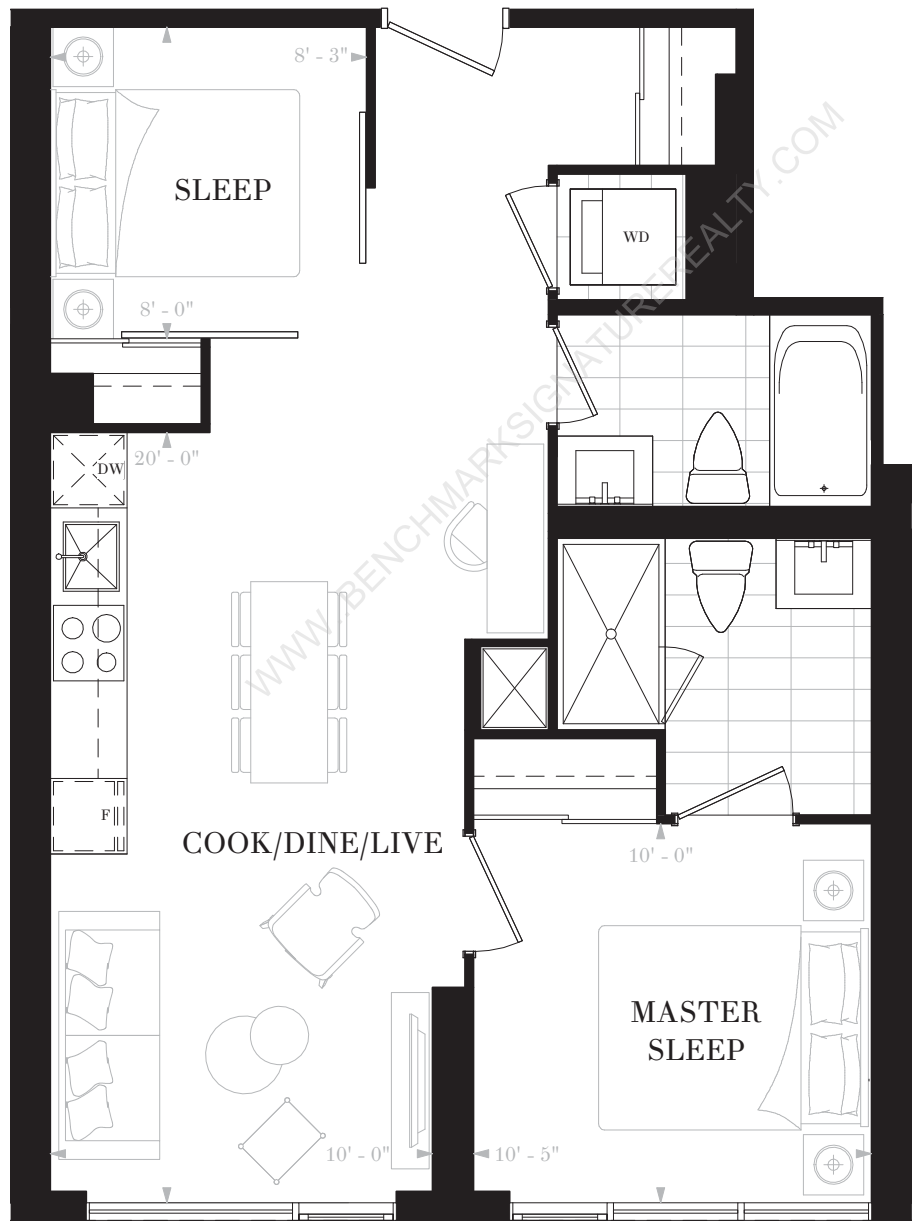
FLOOR 6



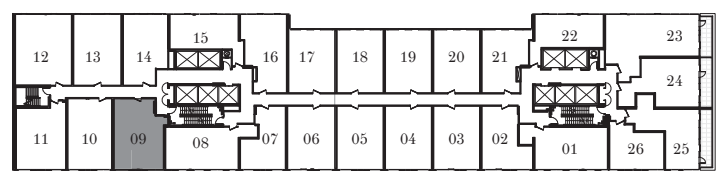
**NOBU**  
RESIDENCES  
TORONTO

**SUITE P2H**  
2 BEDROOMS  
2 BATHS

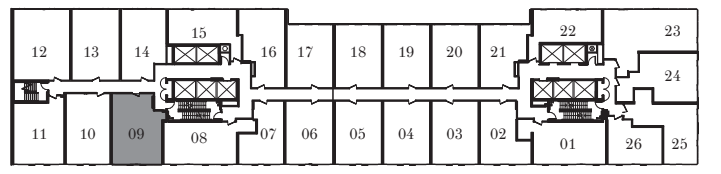
INTERIOR: 681 SF



FLOOR 3



FLOOR 4



FLOOR 5

Any stated areas and/or dimensions shown are approximate only and subject to normal construction variances. Actual usable floor space may vary from any stated or depicted floor area. The layout of the suite may be reversed depending on the location of the unit within the project. Any furniture depicted is for illustration purposes only and does not necessarily reflect the electrical plan of the unit. Windows behind the cladding, installed as a design element, may be spandrel or vision glass. The view from or through the windows to the exterior may be partially obstructed by materials affixed to the exterior cladding of the building as part of an overall design element. Any and all sizes and/or specifications are subject to change without notice. All illustrations are artist's concept only. E. & O. E. May 2017



# NOBU

## RESIDENCES

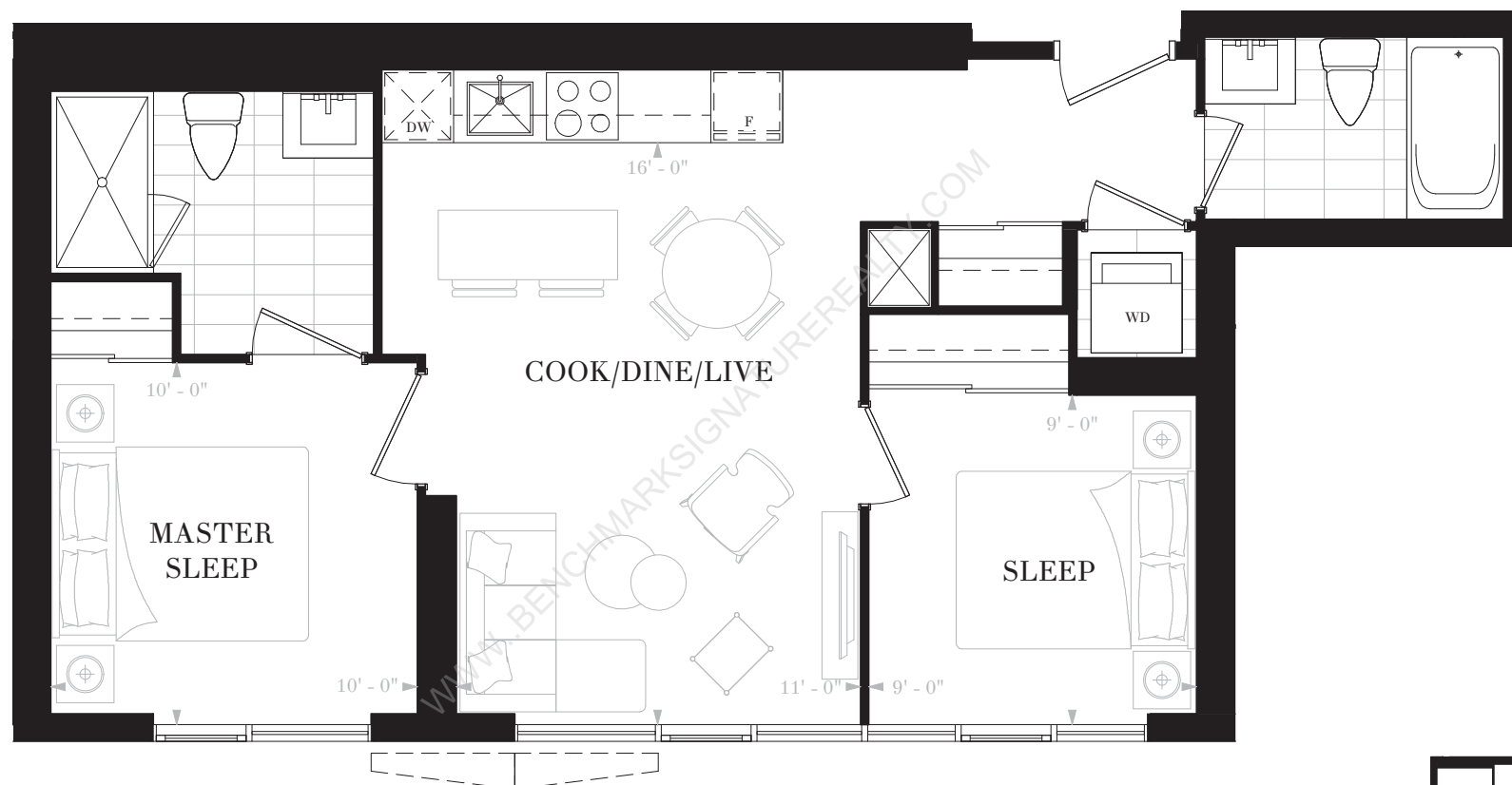
### TORONTO

#### SUITE P2J

2 BEDROOMS

2 BATHS

INTERIOR: 689 SF



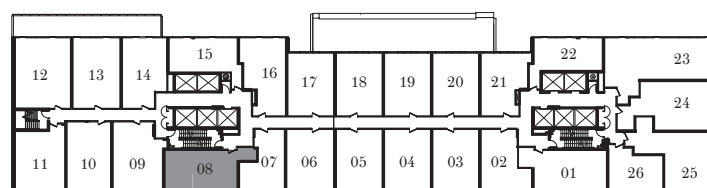
FLOORS 3-5



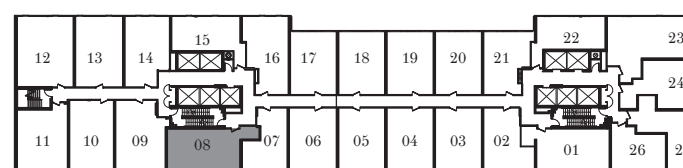
FLOORS 6-7



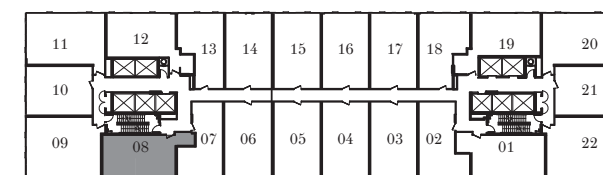
FLOOR 8



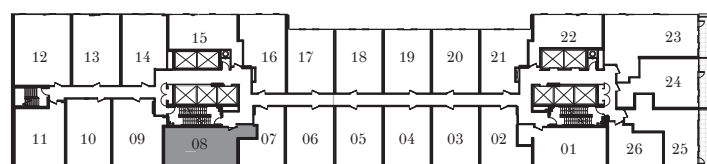
FLOOR 3



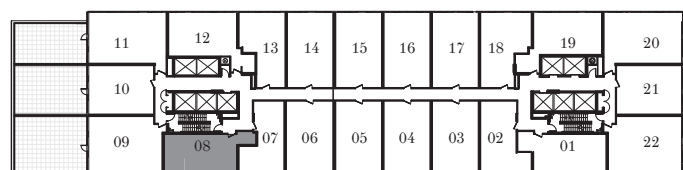
FLOOR 5



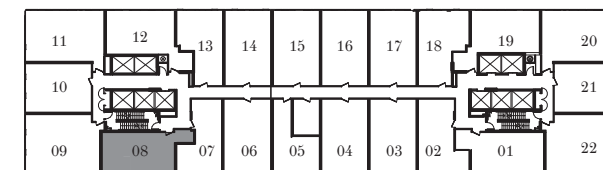
FLOOR 7



FLOOR 4



FLOOR 6



FLOOR 8

Any stated areas and/or dimensions shown are approximate only and subject to normal construction variances. Actual usable floor space may vary from any stated or depicted floor area. The layout of the suite may be reversed depending on the location of the unit within the project. Any furniture depicted is for illustration purposes only and does not necessarily reflect the electrical plan of the unit. Windows behind the cladding, installed as a design element, may be spandrel or vision glass. The view from or through the windows to the exterior may be partially obstructed by materials affixed to the exterior cladding of the building as part of an overall design element. Any and all sizes and/or specifications are subject to change without notice. All illustrations are artist's concept only. E. & O. E. May 2017



# NOBU

## RESIDENCES

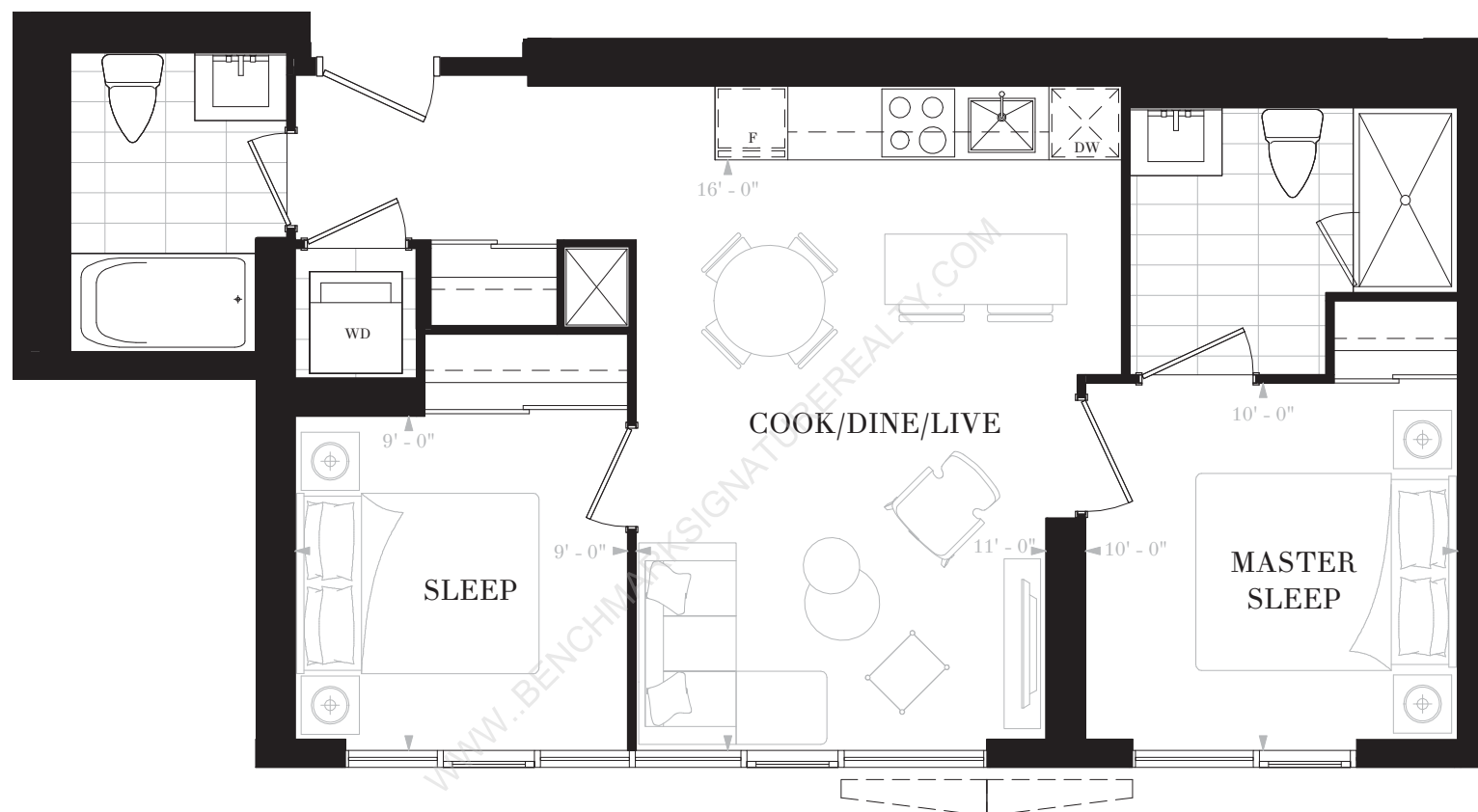
### TORONTO

#### SUITE P2M

2 BEDROOMS

2 BATHS

INTERIOR: 701 SF



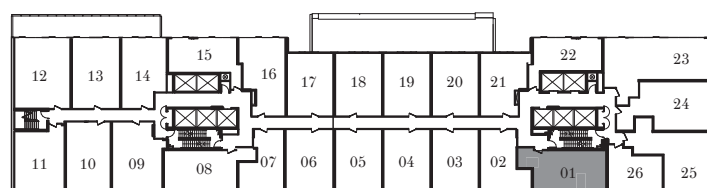
FLOORS 3-5



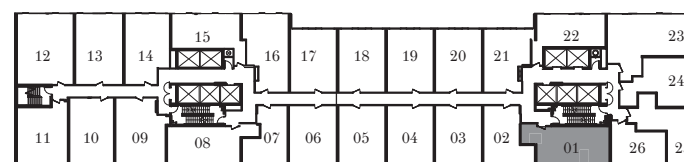
FLOORS 6-7



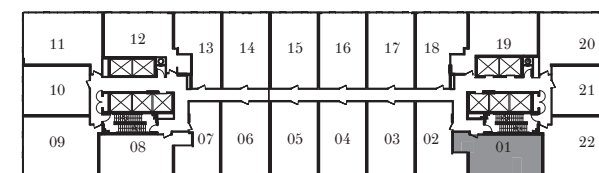
FLOOR 8



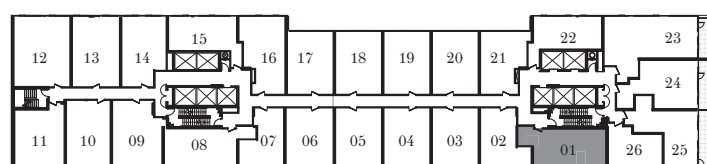
FLOOR 3



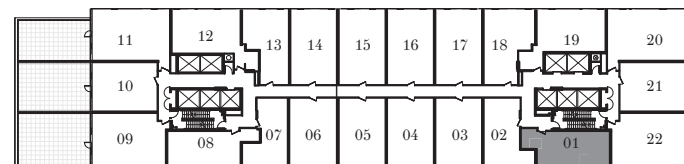
FLOOR 5



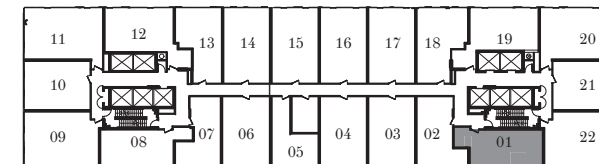
FLOOR 7



FLOOR 4



FLOOR 6



FLOOR 8

Any stated areas and/or dimensions shown are approximate only and subject to normal construction variances. Actual usable floor space may vary from any stated or depicted floor area. The layout of the suite may be reversed depending on the location of the unit within the project. Any furniture depicted is for illustration purposes only and does not necessarily reflect the electrical plan of the unit. Windows behind the cladding, installed as a design element, may be spandrel or vision glass. The view from or through the windows to the exterior may be partially obstructed by materials affixed to the exterior cladding of the building as part of an overall design element. Any and all sizes and/or specifications are subject to change without notice. All illustrations are artist's concept only. E. & O. E. May 2017



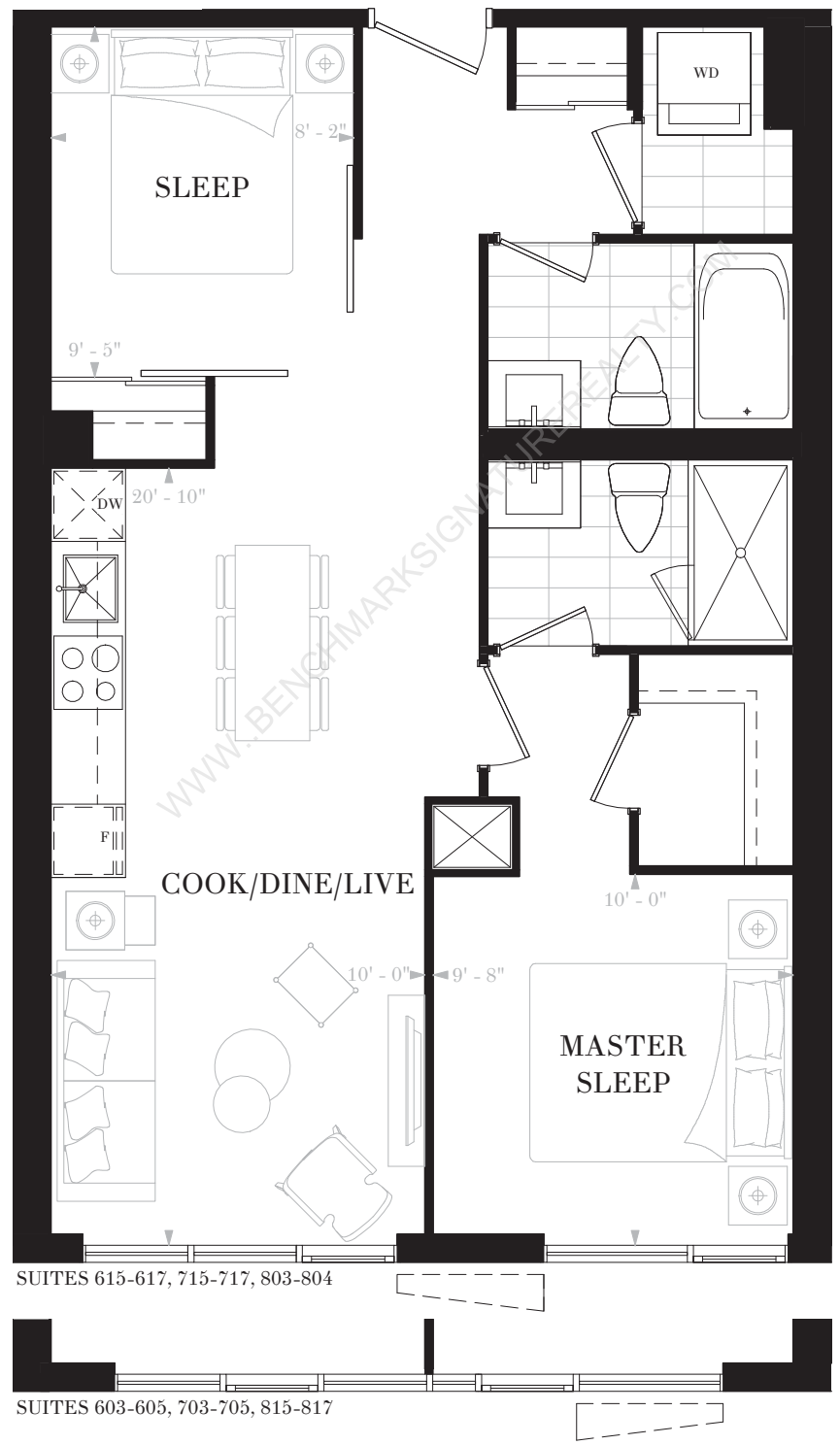
**NOBU**  
RESIDENCES  
TORONTO

**SUITE P2N**

2 BEDROOMS

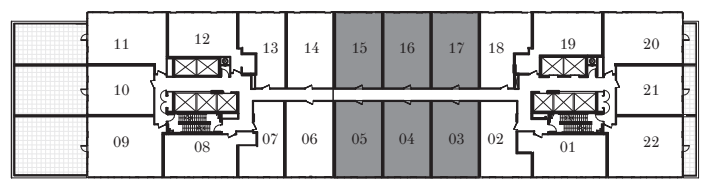
2 BATHS

INTERIOR: 706 SF

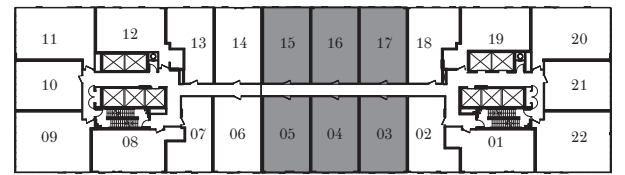


SUITES 615-617, 715-717, 803-804

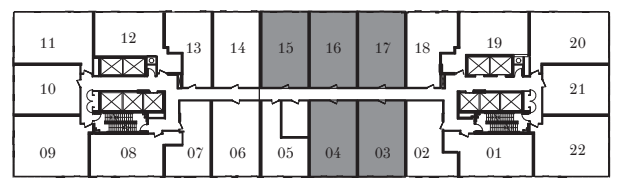
SUITES 603-605, 703-705, 815-817



FLOOR 6



FLOOR 7



FLOOR 8

Any stated areas and/or dimensions shown are approximate only and subject to normal construction variances. Actual usable floor space may vary from any stated or depicted floor area. The layout of the suite may be reversed depending on the location of the unit within the project. Any furniture depicted is for illustration purposes only and does not necessarily reflect the electrical plan of the unit. Windows behind the cladding, installed as a design element, may be spandrel or vision glass. The view from or through the windows to the exterior may be partially obstructed by materials affixed to the exterior cladding of the building as part of an overall design element. Any and all sizes and/or specifications are subject to change without notice. All illustrations are artist's concept only. E. & O. E. May 2017



# NOBU

## RESIDENCES

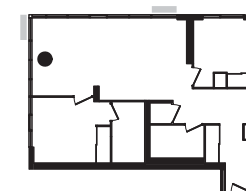
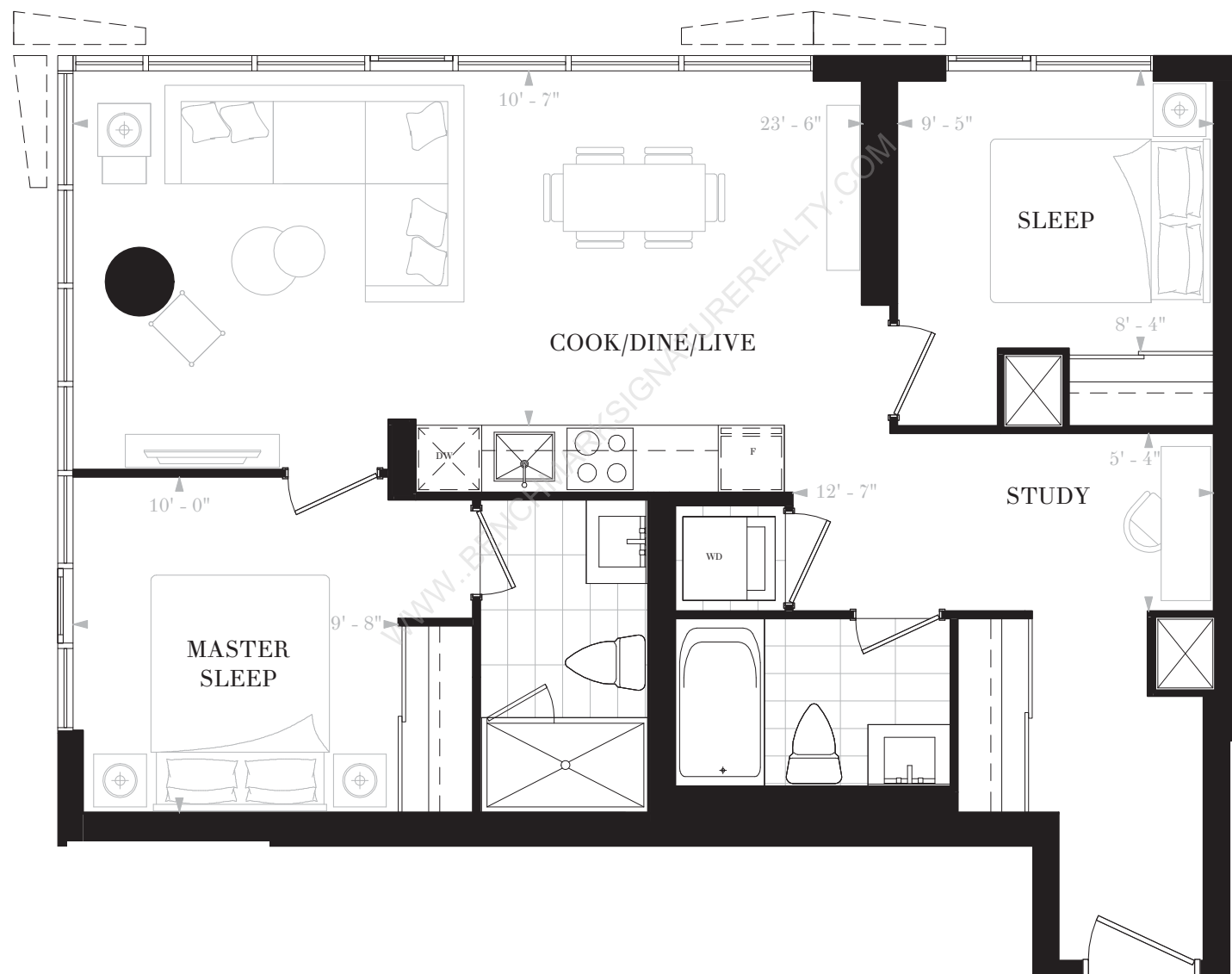
TORONTO

### SUITE P2X

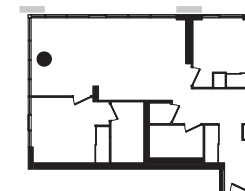
2 BEDROOMS

2 BATHS

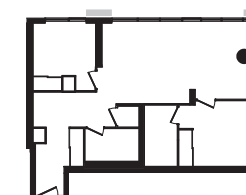
INTERIOR: 834 SF



SUITE 711



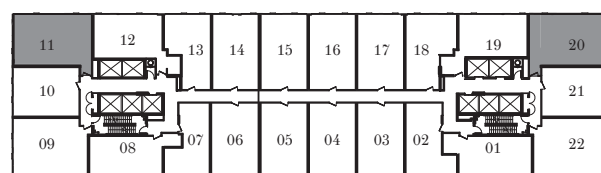
SUITE 811, 903



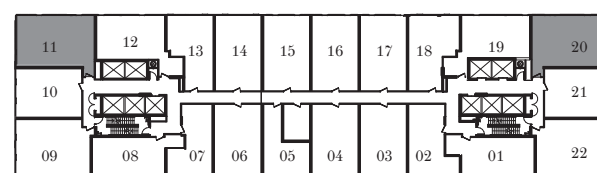
SUITE 720



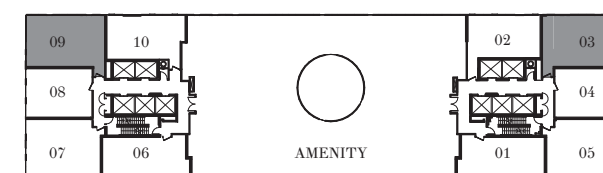
SUITE 820, 909



FLOOR 7



FLOOR 8



FLOOR 9

Any stated areas and/or dimensions shown are approximate only and subject to normal construction variances. Actual usable floor space may vary from any stated or depicted floor area. The layout of the suite may be reversed depending on the location of the unit within the project. Any furniture depicted is for illustration purposes only and does not necessarily reflect the electrical plan of the unit. Windows behind the cladding, installed as a design element, may be spandrel or vision glass. The view from or through the windows to the exterior may be partially obstructed by materials affixed to the exterior cladding of the building as part of an overall design element. Any and all sizes and/or specifications are subject to change without notice. All illustrations are artist's concept only. E. & O. E. May 2017

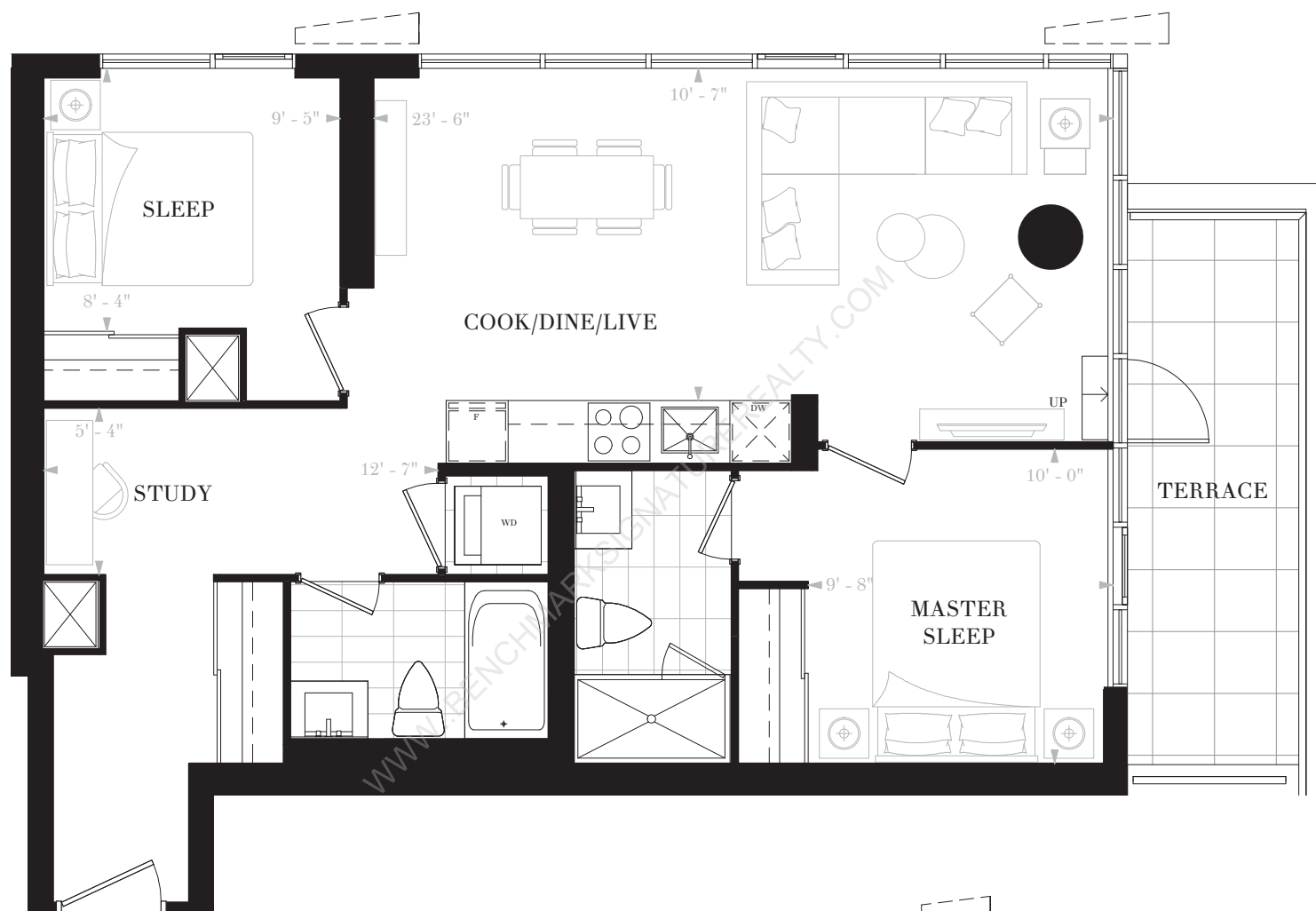


# NOBU

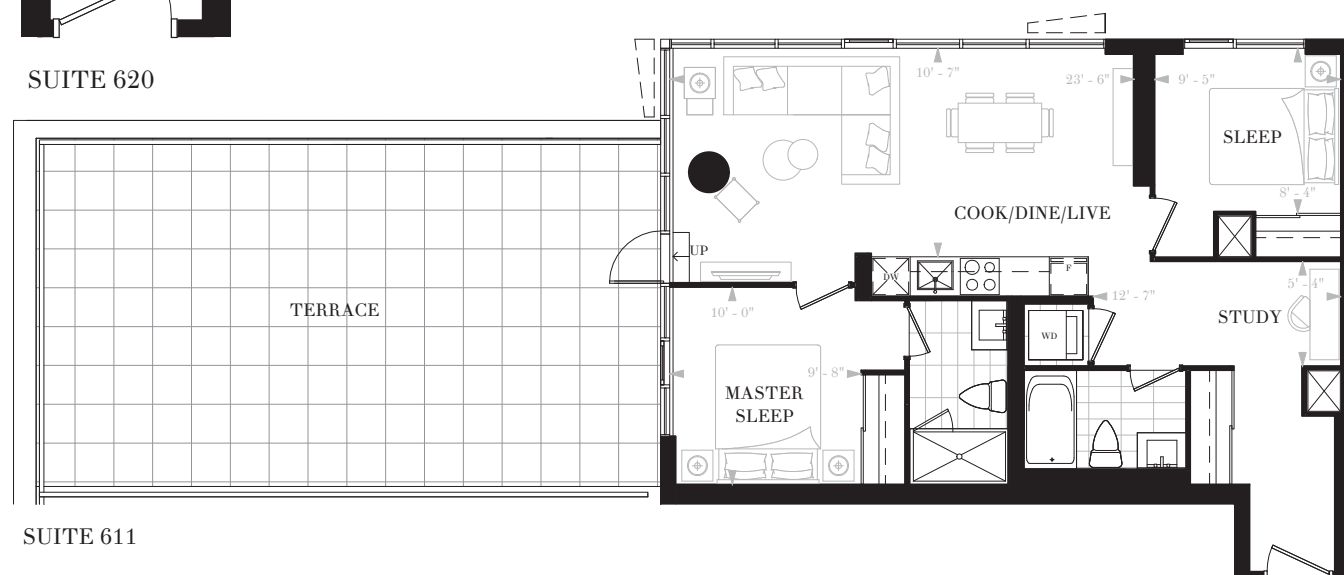
RESIDENCES  
TORONTO

**SUITE P2X(T)**  
2 BEDROOMS  
2 BATHS

**SUITE 620**  
INTERIOR: 834 SF  
TERRACE: 100 SF  
TOTAL: 934 SF

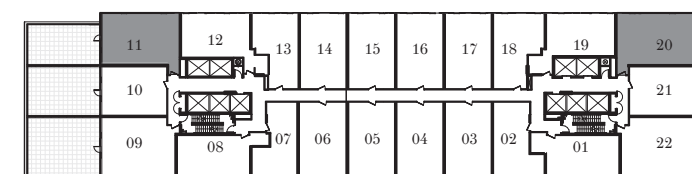


SUITE 620



SUITE 611

**SUITE 611**  
INTERIOR: 834 SF  
TERRACE: 570 SF  
TOTAL: 1404 SF



FLOOR 6





# NOBU

## RESIDENCES

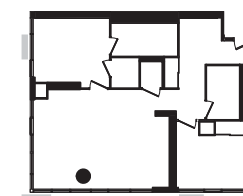
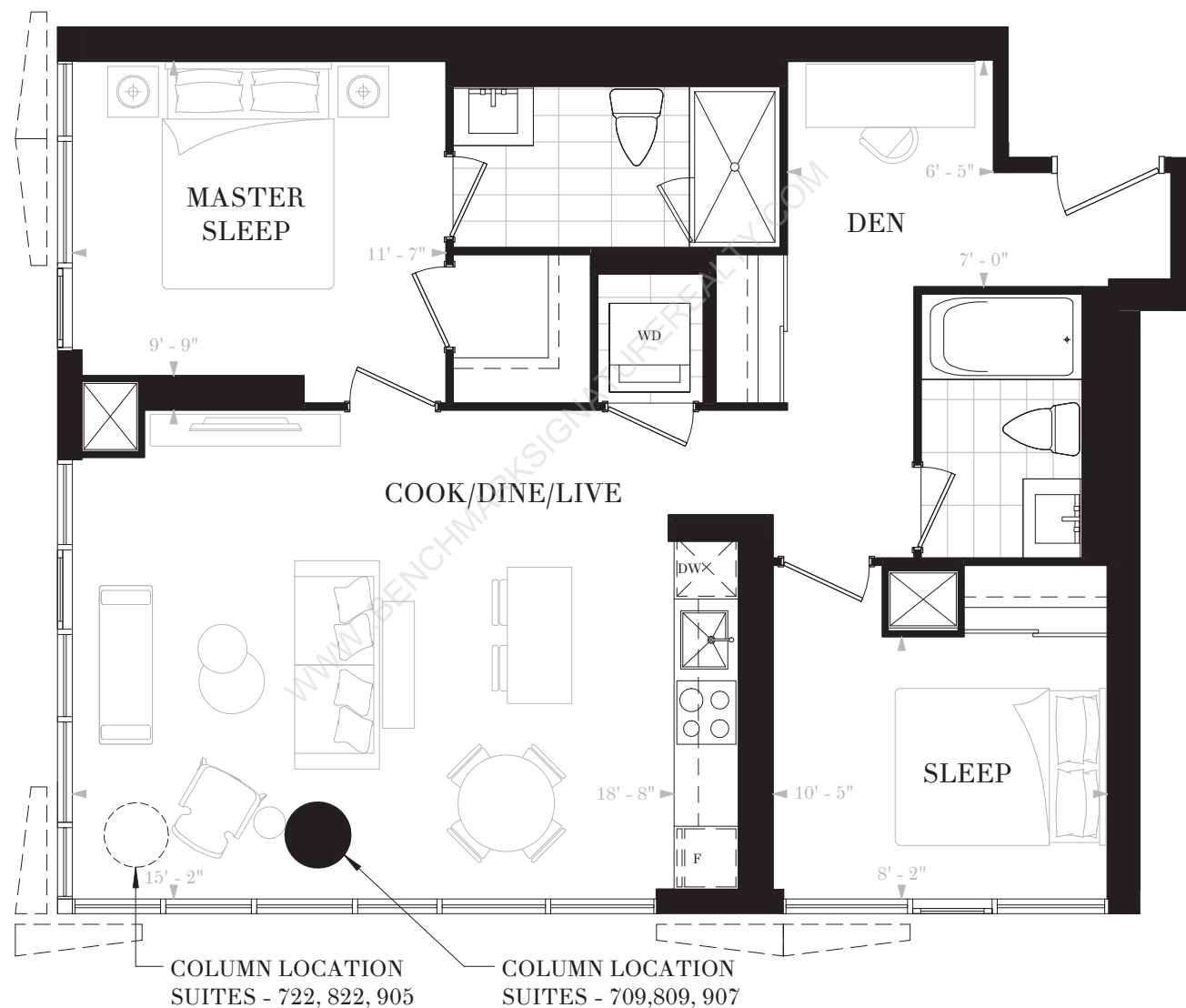
### TORONTO

#### SUITE P2Y

2 BEDROOMS & DEN

2 BATHS

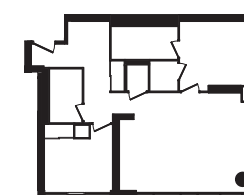
INTERIOR: 890 SF



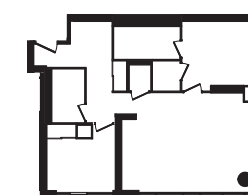
SUITE 709



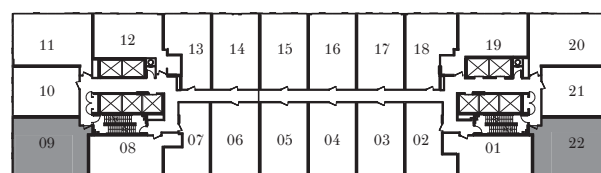
SUITE 809, 907



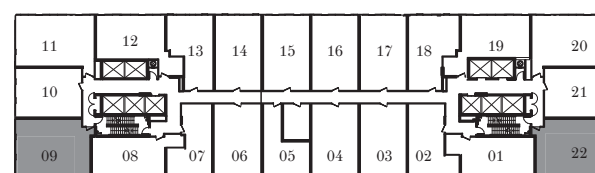
SUITE 722



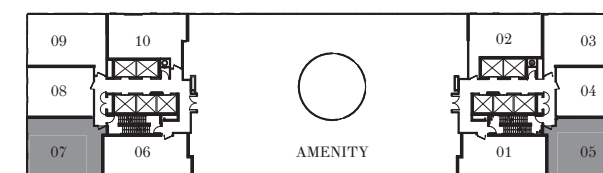
SUITE 822, 905



FLOOR 7



FLOOR 8



FLOOR 9

Any stated areas and/or dimensions shown are approximate only and subject to normal construction variances. Actual usable floor space may vary from any stated or depicted floor area. The layout of the suite may be reversed depending on the location of the unit within the project. Any furniture depicted is for illustration purposes only and does not necessarily reflect the electrical plan of the unit. Windows behind the cladding, installed as a design element, may be spandrel or vision glass. The view from or through the windows to the exterior may be partially obstructed by materials affixed to the exterior cladding of the building as part of an overall design element. Any and all sizes and/or specifications are subject to change without notice. All illustrations are artist's concept only. E. & O. E. May 2017

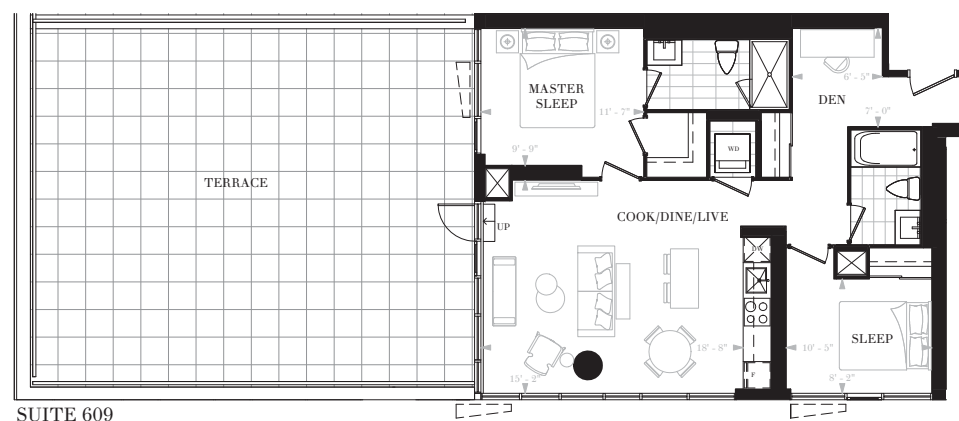
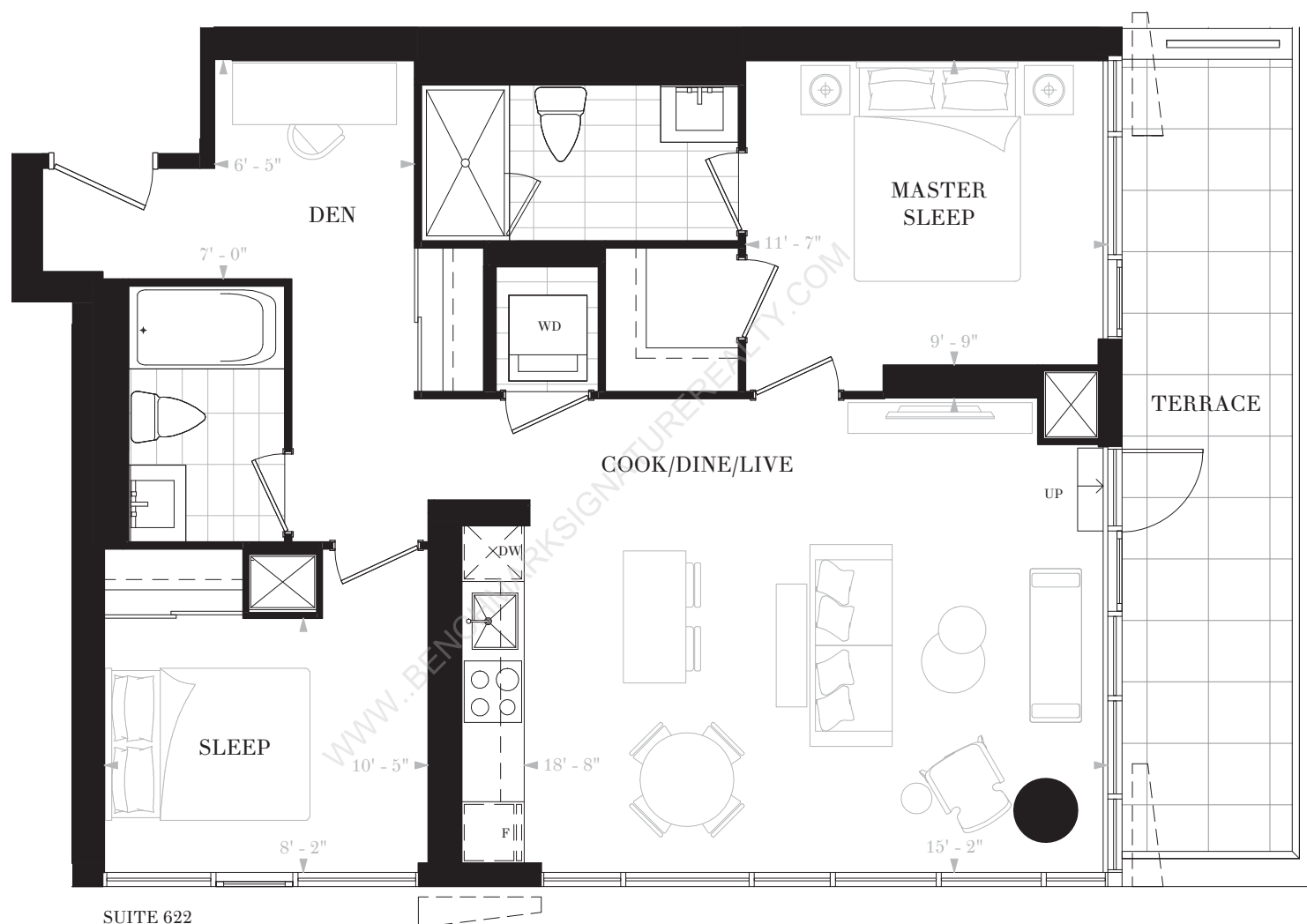


# NOBU

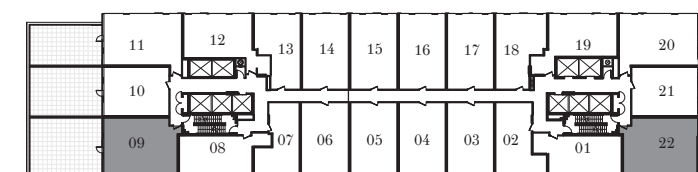
RESIDENCES  
TORONTO

**SUITE P2Y(T)**  
2 BEDROOMS & DEN  
2 BATHS

**SUITE 622**  
INTERIOR: 890 SF  
TERRACE: 150 SF  
TOTAL: 1040 SF



**SUITE 609**  
INTERIOR: 890 SF  
TERRACE: 817 SF  
TOTAL: 1707 SF



FLOOR 6

