

21 January 2022

Community Relations
Basingstoke Campus
Gresley Road
Basingstoke
RG21 4FS

Helpline (24/7): 03457 11 41 41

UPDATE

Dear neighbour,

Iron Bridge replacement, High Street, Staines - invitation to community information drop-in meeting on Wednesday 9 February at 12:30 to 18:00 at SUKB Norris Road (old Burrells Unit), Two Rivers, Staines

Following our letter of 2 December 2021 which some residents may not have received, I'm writing to invite you to our community information drop-in meeting where you'll have the opportunity to speak to our project team who will explain how we'll deliver this work.

As previously explained, we're planning the replacement of the 'Iron Bridge' railway bridge near Staines High Street, and we expect this work to take place from **February to April 2022**. The bridge is approaching the end of its operational life, and its condition means that there is currently a speed restriction for trains passing over it. We understand the communities' views on the condition and visual appearance of the current bridge, and we're pleased to share our plans to replace the bridge and improve the appearance and visual amenity for the local community.

As our work may cause disruption for the local businesses and community, I would like to assure you that the planned work, roadblocks, and traffic diversions will be widely publicised in the area, through posters, social and local media and press releases.

To carry out this work, there will be a **2-day full road closure from Sat 5 March to Mon 7 March and another 19-day full road closure from 21 March to 8 April 2022 with diversions in place as detailed in the table below.**

Work is planned to take place as follows:

Date and time	Work to be carried out
Tues 8 Feb to Fri 29 April 2022	Work starts, site set up, traffic increase of deliveries.
Sat 5 March to Mon 7 March 2022	Staines Station closed. Full road closure (Mustard Mill Road and South Street);
01:00 Sat to 04:00 Mon continuous	Erecting scaffolding around bridge
Mon 21 March to Fri 8 April 2022	Full road closure (Mustard Mill Road and South Street)
08:00 to 17:00	traffic lights and street furniture removal
Sat 26 March to Sun 27 March 2022	Staines Station closed. Full road closure (Mustard Mill Road and South Street)
01:00 Sat to 04:00 Sun continuous	Bridge removal, replacement using cranes and lorries.

Reference: L1 – Staines – SWE 19m 584yds (W) - SC/ Osborne

Mon 28 March to Fri 8 April 2022 08:00 to 17:00	Full road closure, (Mustard Mill Road and South Street) complete brick repairs; remove site fencing. Re-open road
Sun 10 April to Mon 11 April 01:00 Sun to 04:00 Mon continuous	Staines Station closed. Follow up work: tamping to level new ballast on track.
Mon 11 April to Fri 29 April 2022 08:00 to 17:00	Site clearance and snagging checks. Works complete.

Road closures and traffic diversions

We're also working with the local authority to plan this work and install appropriate signage of road closures for shoppers. There will be road closures and traffic diversions from 5 March to 8 April 2022 to allow us to remove the existing structure and lift a new bridge into place. For the full road closure, we'll close the junction at London Road, Mustard Mill Lane and South Street to traffic. The pedestrianised High Street will also remain open allowing the footpath to the Two Rivers shopping centre to remain open.

We have taken into consideration the impact to the local community and revised the traffic management to maintain access for business deliveries on the old high street, access will be manually operated. Access to the Premier Inn carpark is also maintained for both closures, however, no right turn to South Street will be available when leaving this carpark.

Trains will remain running during this period except on the below dates when South Western Railway (SWR) services between Staines and Windsor & Eton Riverside will be replaced by buses.

- **Monday 21 to Sunday 27 February (more details to follow about re-signalling works)**
- **Wednesday 2 March**
- **Saturday 5 March to Sunday 6 March**
- **Saturday 26 March to Sunday 27 March**
- **Sunday 10 April to Monday 11 April**

We appreciate you may have questions about our work and will want to hear from our teams on what we're doing, so we'll be holding a **community information drop-in meeting on Wednesday 9 February from 12:30 to 18:00** at the address of the unit below in Staines:

SUKb Norris Road (old Burrells Unit)

Two Rivers

Staines

TW18 4UP

[https://www.google.com/maps/@51.4345321,-](https://www.google.com/maps/@51.4345321,-0.5107235,3a,75y,68.53h,95.05t/data=!3m6!1e1!3m4!1sN4Moex4nHxrxvmCh1Q6O)

[0.5107235,3a,75y,68.53h,95.05t/data=!3m6!1e1!3m4!1sN4Moex4nHxrxvmCh1Q6O](https://www.google.com/maps/@51.4345321,-0.5107235,3a,75y,68.53h,95.05t/data=!3m6!1e1!3m4!1sN4Moex4nHxrxvmCh1Q6O)

[Bw!2e0!7i13312!8i6656](https://www.google.com/maps/@51.4345321,-0.5107235,3a,75y,68.53h,95.05t/data=!3m6!1e1!3m4!1sN4Moex4nHxrxvmCh1Q6OBw!2e0!7i13312!8i6656)

Reference: L1 – Staines – SWE 19m 584yds (W) - SC/ Osborne

In the meantime, if you have any immediate questions or concerns about our work, you can contact our helpline on **0345 711 4141** and quote “**Iron Bridge replacement, Staines.**” One of the local route team will then get back to you as quickly as possible. Further details can be found at www.networkrail.co.uk/staines-iron-bridge from Friday 28 January.

Yours sincerely
Community relations, Wessex
Network Rail Southern region

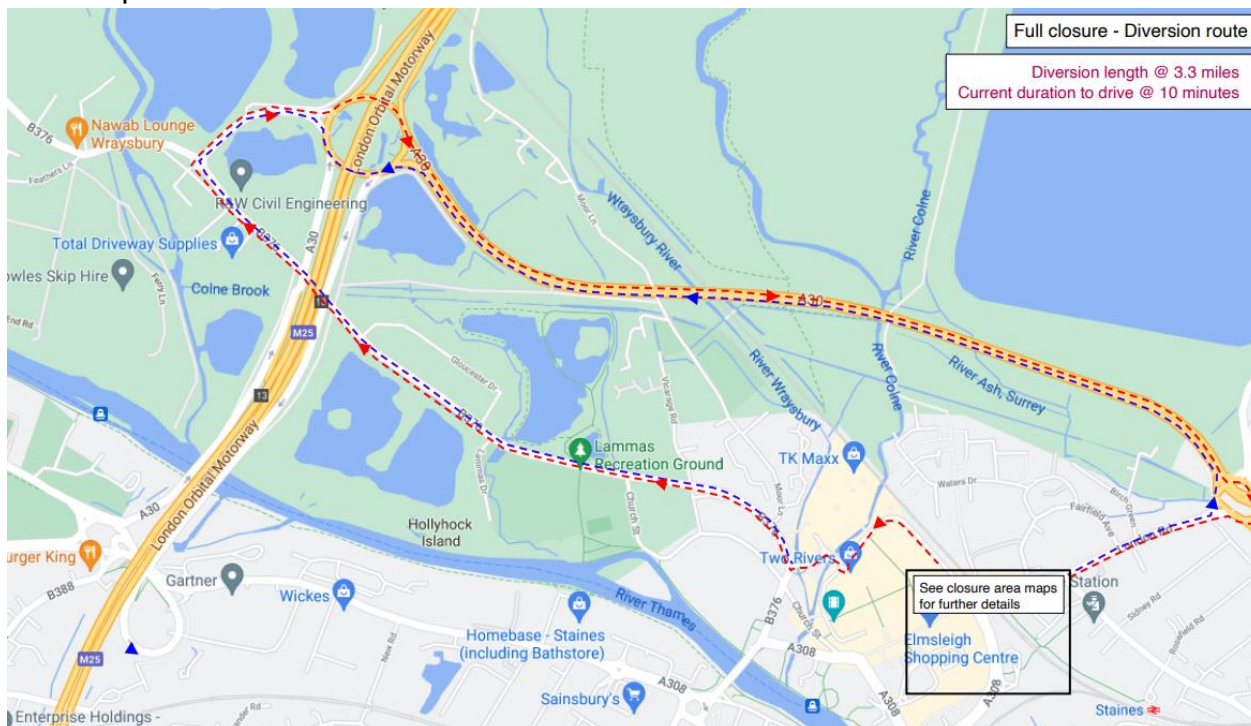
The maps below show the road closure (marked in red) and pedestrian diversion (marked in yellow) during the bridge replacement work. We're sorry for the quality of the maps, we'll have clearer maps and diagrams at the community drop-in meeting.



Reference: L1 – Staines – SWE 19m 584yds (W) - SC/ Osborne

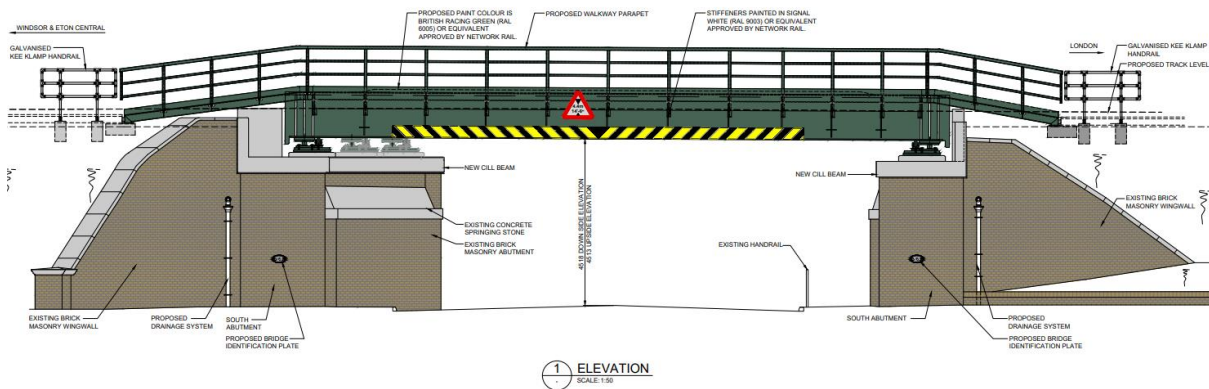


This map shows the diversion route for vehicles via the A30 and B376



Reference: L1 – Staines – SWE 19m 584yds (W) - SC/ Osborne

The illustration below shows what the new bridge will look like.



We'll use specialist equipment designed to minimise the noise we create, however some of our equipment will cause some disturbance. Every effort will be made to minimise any excessive noise while this work is carried out.