



SPECIAL FOR
MTNA
MUSIC TEACHERS NATIONAL ASSOCIATION

The 2021-22 Guide to
MUSIC SCHOOLS

musical
america
September
2021
SPECIAL REPORTS

MUSIC SCHOOLS

For those schools in the listings, you'll find detailed information on degrees offered, available areas of study, numbers of students and teachers, career and post-graduate assistance, and links to social media and financial information. We also asked each institution to describe its most "distinguishing characteristics." We relied on the schools to tell their own stories.

Adelphi University.....	2	Mannes School of Music.....	25
Arizona State University		Robert McDuffie Center for Strings.....	25
School of Music, Dance And Theatre.....	3	New England Conservatory.....	26
Bard College Conservatory of Music.....	3	New World Symphony,	
Bienen School of Music.....	4	America's Orchestral Academy.....	27
Blair School of Music.....	5	Northeastern University Department of Music.....	27
Boston Conservatory at Berklee.....	6	Oberlin Conservatory of Music.....	28
Boston University School of Music.....	7	Pacific Region International Summer Association (PRISMA)	
The Buchmann-Mehta School of Music.....	7	Festival & Academy.....	28
Sarah and Ernest Butler School of Music.....	8	Peabody Conservatory.....	29
Carnegie Mellon University School of Music.....	8	Peck School of the Arts.....	30
Cleveland Institute of Music.....	9	Royal College of Music.....	31
Colburn Conservatory of Music.....	10	San Francisco Conservatory of Music.....	31
Conservatorio di Musica "Arrigo Boito".....	10	Shanghai Orchestra Academy (SOA).....	32
The Crane School of Music.....	11	Shenandoah Conservatory.....	33
Curtis Institute of Music.....	11	The Shepherd School of Music.....	33
Depaul University School of Music.....	12	Stauffer Center for Strings.....	34
Depauw University.....	13	The Orchestra Now.....	34
Eastman School of Music.....	14	The Tianjin Juilliard School.....	35
Hanns Eisler School of Music Berlin.....	15	UCLA Herb Alpert School of Music.....	36
Florida State University College of Music.....	15	University of Cincinnati College–	
The Fredonia School of Music.....	16	Conservatory of Music (CCM).....	37
Frost School of Music.....	16	University of Colorado Boulder.....	38
The Glenn Gould School.....	17	University of Florida.....	38
Guildhall School of Music & Drama.....	18	University of Illinois School of Music.....	39
Hall-Musco Conservatory of Music.....	18	University of Massachusetts Amherst.....	39
The Hartt School.....	19	University of Massachusetts Lowell.....	40
IClassical Academy.....	20	University of Michigan.....	40
Indiana University Jacobs School of Music.....	21	University of North Carolina School of the Arts.....	41
Jam Music Lab Private University		University of North Texas.....	42
for Jazz & Popular Music Vienna.....	21	The University of Tampa.....	42
The Juilliard School.....	22	USC Thornton School of Music.....	43
Longy School of Music.....	23	Westminster College of the Arts.....	44
Manhattan School of Music.....	24	Yale School of Music.....	45

Editor's Note



Back in the old days, a student of the arts trained to achieve artistic excellence. These days, excellence is not enough. Jobs have grown scarce and competition fierce. Entrepreneurship is key. And, especially on the heels of the pandemic shutdown and the move to streaming, an artist must also be an audio/video producer, winning onscreen personality, social media expert, and marketing whiz.

As such, for music schools and conservatories, attracting the best students and equipping them for success has its challenges: Star faculty must also be willing mentors, available for networking opportunities. Facilities ranging from dorm rooms to rehearsal spaces to performance halls must be state-of-the-art. So should equipment (and faculty) for recording audio and/or video and distance-learning network technology. Intern and fellowship opportunities that lead to real jobs should be available with various arts or technology organizations, preferably local. And speaking of local, schools and community centers should open their doors for students to learn the realities of teaching and communicating with diverse populations. And what about creature comforts, like food service? Financial aid available? How much? When? How?

You'll discover answers to many of these questions in our *2021-22 Guide to Top Music Schools*, particularly within the "Career/Post Graduate Assistance" sections, many of which abound with options for internships, fellowships, mock auditions, grants, and other conduits between academia and reality. We've seen special-degree training options expanding as well, not just for arts administration and leadership, but for video and other 21st-century technologies, music therapy, and community-music specialization.

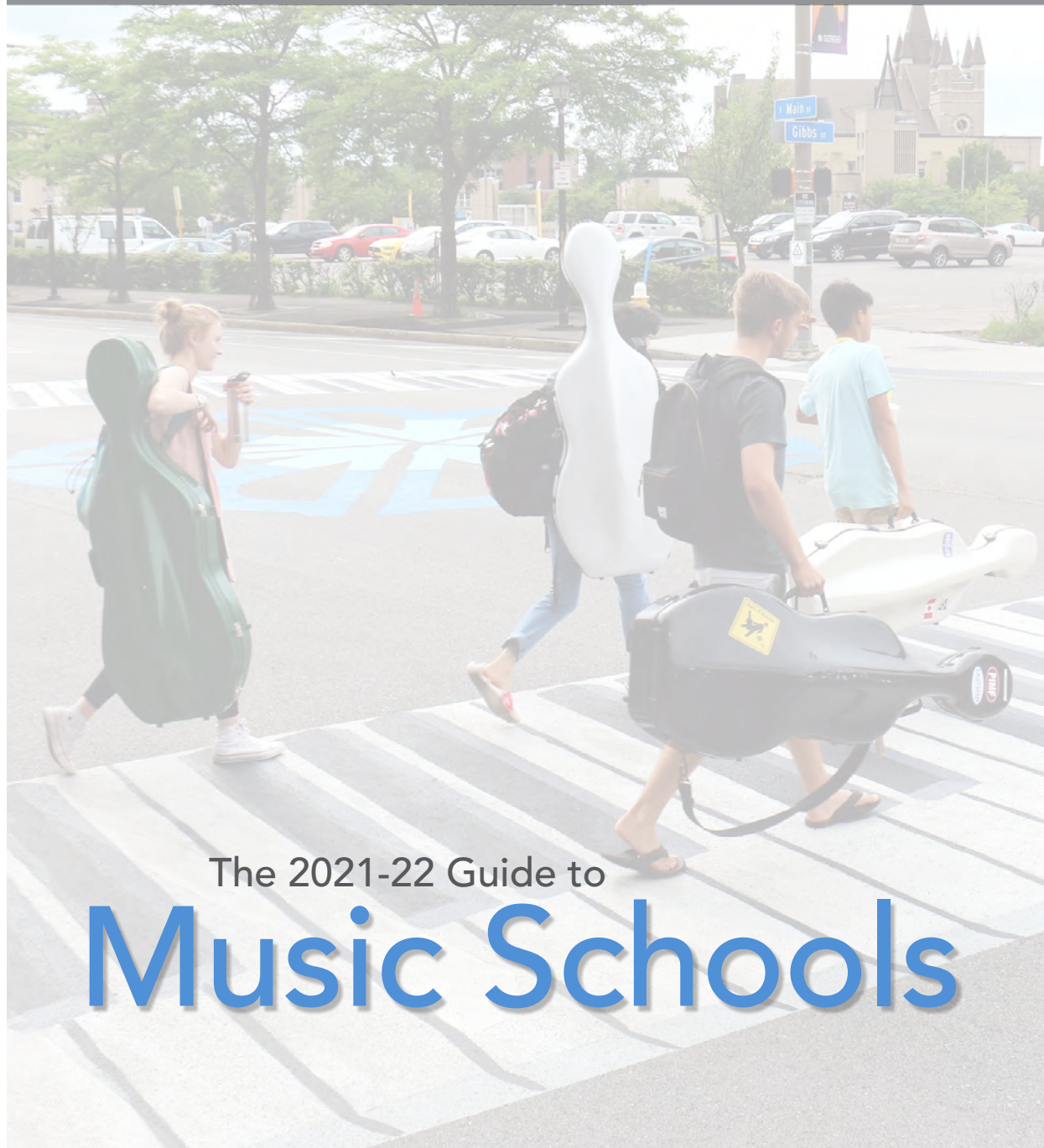
As in our last School's Guide, we have listed pandemic policies for each of our entries. Despite best efforts to provide the latest information, given the ever-changing nature of the beast (still) lingering, it's always a good idea to check individual websites for updates. In the meantime, here's a preliminary overview.

Regards,

Susan Elliott

Editor, *News and Special Reports*

COVER PHOTO: Musicians walk on a crosswalk painted like a piano outside the Eastman School of Music in Rochester, NY.
CREDIT: Brett Dahlberg/WXXI Public Media.



ADELPHI UNIVERSITY

WHAT DISTINGUISHES THIS SCHOOL?

Adelphi is known for its top-ranked academic programs, small classes, and personalized attention. Our students call their Adelphi experience transformative and call their community family—exactly what your college studies at all levels should be about.

LOCATION One South Avenue
Garden City, NY 11530
UNITED STATES
www.adelphi.edu

ADMISSIONS 516-877-3050
admissions@adelphi.edu

Audition Requirements

[Audition requirements](#)

Please check the website for discipline-specific audition information. Additionally, brief tests in sight-reading, pitch and interval recognition, and theory are given for proper placement of each student.

FINANCIAL INFORMATION

[Tuition & Fees](#) / [Financial Aid & Scholarships](#)

CAREER / POST-GRADUATION ASSISTANCE

[Career Assistance](#)

KEY STATISTICS (college level and above)

65 music students

Music Faculty: 6 full time, 50 adjunct

AREAS OF STUDY

Brass • Composition (Performance) • Jazz Studies & Contemporary Media • Music Education • Music Therapy • Organ • Piano • Strings • Vocal Arts/Opera • Winds & Percussion

Additional details: Music Minor; Music Minor in Digital Recording and Music Technology; Concentration in Music Entrepreneurship (anticipated to launch Spring 2022)

ONLINE COURSES

[Online courses information](#)

Additional plans under consideration

PANDEMIC & SAFETY: SCHOOL POLICIES

[Policies & Procedures for this school](#)

✓=Yes ✗=No

Proof of vaccination required?

✓ Students ✗ Faculty ✗ Staff

Proof of a negative COVID-19 test required?

✗ Students ✗ Faculty ✗ Administration & staff

Reduced density being considered in:

✗ On-campus housing ✗ Class and/or ensembles

SOCIAL LINKS



The 2021-22 Guide to
Music Schools

ARIZONA STATE UNIVERSITY SCHOOL OF MUSIC, DANCE AND THEATRE

WHAT DISTINGUISHES THIS SCHOOL?

Located in the culturally rich Southwest desert in one of the country's most vibrant, expanding urban centers, the ASU School of Music, Dance and Theatre affords its students not only access to this diverse environment but also engagement in Phoenix's diverse, flourishing arts community.

LOCATION 50 East Gammage Parkway
Tempe, AZ 85287-0405
UNITED STATES
music.asu.edu
musicdancetheatre.asu.edu

ADMISSIONS 480-965-5069
mdtadmissions@asu.edu

Audition Requirements [Audition Requirements](#)

FINANCIAL INFORMATION
[Tuition & Fees](#) / [Financial Aid & Scholarships](#)

CAREER / POST-GRADUATION ASSISTANCE
[Career assistance at Arizona State University School of Music, Dance and Theatre](#)

KEY STATISTICS (college level and above)
750 music students
Music Faculty: 74 full time, 60 adjunct

AREAS OF STUDY

Arts Leadership • Brass • Collaborative Piano
• Composition (Performance) • Conducting • Jazz Studies & Contemporary Media • Music Business
• Music Education • Musicology • Music Therapy
• Organ • Piano • Strings • Vocal Arts/Opera • Winds & Percussion • Arts leadership (through Herberger Institute for Design and the Arts) • Music Theatre
• Pedagogy • Interdisciplinary Digital Media

DEGREE PROGRAMS
[Undergraduate Programs](#) / [Graduate Programs](#)

ONLINE COURSES
[Online courses information](#)
76% to 100% will be available as hybrid or online-only courses

PANDEMIC & SAFETY: SCHOOL POLICIES
[Policies & Procedures for this school](#)
✓=Yes ✗=No

Proof of vaccination required?
✗ Students ✗ Faculty ✗ Staff

Proof of a negative COVID-19 test required?
✗ Students ✗ Faculty ✗ Administration & staff

Reduced density being considered in:
✓ On-campus housing ✓ Class and/or ensembles

SOCIAL LINKS 

BARD COLLEGE CONSERVATORY OF MUSIC

Bard College

WHAT DISTINGUISHES THIS SCHOOL?

All Conservatory undergraduates pursue a five-year program leading to two degrees: the Bachelor of Music degree and the Bachelor of Arts degree in a field other than music. Bard Conservatory offers degrees in instrumental and vocal performance, composition, and traditional Chinese instruments.

LOCATION 30 Campus Road
Annandale-on-Hudson, NY 12504
UNITED STATES
www.bard.edu/conservatory/

ADMISSIONS 845-752-2409
conservatoryadmission@bard.edu

Audition Requirements
Undergraduate Double Degree—[Graduate Vocal Arts Program](#); [Graduate Conducting Program](#)

FINANCIAL INFORMATION
[Tuition & Fees](#) / [Financial Aid & Scholarships](#)

CAREER / POST-GRADUATION ASSISTANCE
Our undergraduates tend to pursue graduate degrees from other major conservatories.

KEY STATISTICS (college level and above)
170 music students
Music Faculty: 13 full time, 80 adjunct

AREAS OF STUDY

Brass • Collaborative Piano • Composition (Performance) • Conducting • Organ • Piano • Strings
• Vocal Arts/Opera • Winds & Percussion

DEGREE PROGRAMS
[Undergraduate Programs](#)
[Graduate Vocal Arts](#)
[Graduate Conducting](#)
[Advanced Performance Studies Program](#) (graduate certificate)

[Post-Graduate Collaborative Piano Fellowship](#)
Additional details: Bachelor of Music degrees in performance through a double-degree program; instruments offered are: Pipa; Erhu; Guzheng; Ruan; Dizi; Sheng; Guqin; Chinese Percussion

PANDEMIC & SAFETY: SCHOOL POLICIES
[Policies & Procedures for this school](#)

Proof of vaccination required?
✓ Students ✗ Faculty ✗ Staff

Proof of a negative COVID-19 test required?
✓ Students ✓ Faculty ✓ Administration & staff

Reduced density being considered in:
✗ On-campus housing ✓ Class and/or ensembles

SOCIAL LINKS    

BIENEN SCHOOL OF MUSIC

Northwestern University

Northwestern University is committed to excellent teaching, innovative research, and the personal and intellectual growth of its students in a diverse academic community.

WHAT DISTINGUISHES THIS SCHOOL?

With its proximity to the cultural hub of Chicago, conservatory-level musical training and engaging academic environment, Northwestern's Bienen School of Music provides students an educational atmosphere unlike any other. Undergraduates may pursue dual degrees, double majors, or an ad-hoc (self-designed) major.

LOCATION Patrick G. and Shirley W. Ryan Center for the Musical Arts
70 Arts Circle Drive
Evanston, IL 60208
UNITED STATES
www.music.northwestern.edu

ADMISSIONS 847-491-3141
musiclife@northwestern.edu

Audition Requirements [Audition Requirements](#)

FINANCIAL INFORMATION

[Tuition & Fees](#) / [Financial Aid & Scholarships](#)

CAREER / POST-GRADUATION ASSISTANCE

The Bienen School of Music offers many courses related to crafting and building a successful career in music, and our internationally renowned faculty is an invaluable resource in guiding and preparing students for work post-graduation. Northwestern's [Career Advancement Office](#) provides a wide array of career planning services including



assistance with cover letter and résumé writing, internship applications, and interview skills, as well as more specialized offerings such as panels and opportunities to network with Chicago arts professionals.

KEY STATISTICS (college level and above)
600 music students
Music Faculty: **54** full time, **71** adjunct

AREAS OF STUDY

Brass • Composition (Performance) • Conducting
• Jazz Studies & Contemporary Media • Music Education • Musicology • Piano • Strings • Vocal Arts/Opera • Winds & Percussion • Music Cognition
• Music Theory

DEGREE PROGRAMS

[Undergraduate Programs](#) / [Graduate Programs](#)

ADDITIONAL PROGRAMS (non-matriculating/prep)
[Davee Media Library](#)

PANDEMIC & SAFETY: SCHOOL POLICIES

[Policies & Procedures for this school](#)

✓=Yes ✗=No

Proof of vaccination required?

✓ Students ✗ Faculty ✗ Staff

Proof of a negative COVID-19 test required?

✓ Students ✓ Faculty ✓ Administration & staff

Reduced density being considered in:

✓ On-campus housing ✓ Class and/or ensembles

SOCIAL LINKS   

Northwestern

BIENEN SCHOOL OF MUSIC

www.music.northwestern.edu

The Bienen School of Music offers

- A 152,000-square-foot state-of-the-art facility
- Conservatory-level training combined with the academic flexibility of an elite research institution
- Traditional BM, BA, MM, PhD, and DMA degrees as well as innovative dual-degree, self-designed, and double-major programs
- Close proximity to downtown Chicago



BLAIR SCHOOL OF MUSIC

Vanderbilt University

WHAT DISTINGUISHES THIS SCHOOL?

Blair is a conservatory-level music program alongside a Top 15 academic institution. It is one of the few exclusively undergraduate music schools in the country.

LOCATION 2400 Blakemore Avenue
Nashville, TN 37216
UNITED STATES
blair.vanderbilt.edu/

ADMISSIONS 615-322-6181
blair.inquiries@vanderbilt.edu

Audition Requirements [Audition Requirements](#)

FINANCIAL INFORMATION
[Tuition & Fees](#) / [Financial Aid & Scholarships](#)

CAREER / POST-GRADUATION ASSISTANCE
[Vanderbilt Blair Alumni resources](#) / [Career Center](#)

KEY STATISTICS (college level)
220 music students
Music Faculty: 58 full time, 52 adjunct

BLAIR SCHOOL OF MUSIC (cont'd)

Vanderbilt University

AREAS OF STUDY

Brass • Composition (Performance) • Jazz Studies & Contemporary Media • Music Business • Music Education • Organ • Piano • Strings • Vocal Arts/Opera • Winds & Percussion

DEGREE PROGRAMS

[Undergraduate Programs](#)
Additional details: B. Mus. in Performance; B. Mus. in Composition; B. Mus. in Jazz Studies; B. Mus. & M.B.A.; B.Mus. in Integrated Studies; B. Musical Arts; B. Mus. & M.Ed.

PANDEMIC & SAFETY: SCHOOL POLICIES

[Policies & Procedures for this school](#)

✓=Yes ✗=No

Proof of vaccination required?

✓ Students ✓ Faculty ✓ Staff

Proof of a negative COVID-19 test required?

✓ Students ✓ Faculty ✓ Administration & staff

Reduced density being considered in:

✓ On-campus housing ✓ Class and/or ensembles

SOCIAL LINKS



The Shepherd School of Music at Rice

Robert Yekovich, Dean, The Shepherd School of Music (appointment extended until September 30, 2021)
Matthew Loden, Dean Designate, The Shepherd School of Music (appointment begins October 1, 2021)

The Shepherd School of Music at Rice University offers pre-professional training for musicians, combining the intensity of a conservatory experience with the educational excellence of a renowned private university. Our illustrious faculty of artist-teachers dedicate themselves to the special talents and skills of each individual student.

Robert Yekovich, Dean; Matthew Loden, Dean Designate
The Shepherd School of Music

Faculty

Violin
Paul Kantor
Cho-Liang Lin
Kathleen Winkler

Viola
James Dunham
Ivo-Jan van der Werff

Cello
Norman Fischer
Desmond Hoebig
Brinton Averil Smith

Double Bass
Paul Ellison
Timothy Pitts

Flute
Leone Buysse

Oboe
Robert Atherholt

Clarinet
Richie Hawley

Bassoon
Benjamin Kamins

Horn
William VerMeulen

Trumpet
Barbara Butler
Charlie Geyer

Trombone
Allen Barnhill

Tuba
David Kirk

Percussion
Matthew Strauss

Harp
Paula Page

Piano
Brian Connelly
Jeanne Kierman
Fischer
Sohyoung Park
Jon Kimura Parker
Robert Roux
Virginia Weckstrom

Organ
Ken Cowan

Voice
Ana Maria Martinez
Robin Rice
Nova Thomas

Opera Studies
Susan Lorette Dunn
Miah Im

Vocal Coaching
Bethany Self

Conducting
Thomas Jaber
Larry Rachleff

Composition and Theory
Karim Al-Zand
Damian Blättler
Anthony Brandt
Shih-Hui Chen
Arthur Gottschalk
Pierre Jalbert
Richard Lavenda
Kurt Stallmann

Orchestral and Chamber Repertoire
Joan DerHovsepian
Christopher French
Eric Halen
Thomas LeGrand
Janet Rarick
Michael Webster

Lecturers
Mario Aschauer
Karol Bennett
Rachel Buchman
Rick Erickson
Terry Gaschen
Mary Greitzer
Jerry Hou
Peter Shaw
Robert Simpson
Christopher Turbessi
Chapman Welch

Musicology
Gregory Barnett
David Ferris
Alexandra Kieffer
Peter Loewen
Danielle Ward-Griffin



RICE

The Shepherd School of Music
Rice University, Houston, TX
music.rice.edu

TŌN THE ORCHESTRANOW.
Bard's Orchestral Masters

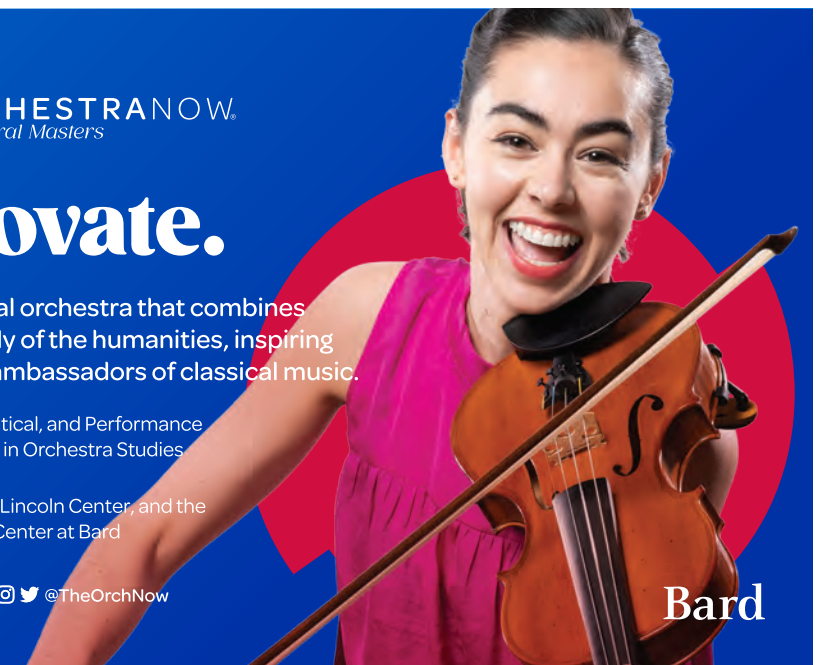
Play. Innovate.

TŌN is a unique pre-professional orchestra that combines performance with rigorous study of the humanities, inspiring musicians to become creative ambassadors of classical music.

- 3-year Master's Degree in Curatorial, Critical, and Performance Studies, or 2-year Advanced Certificate in Orchestra Studies
- Full-tuition fellowship and living stipend
- Regular performances at Carnegie Hall, Lincoln Center, and the stunning Frank Gehry-designed Fisher Center at Bard

Apply now at TON.BARD.EDU

[f](#) [@](#) [@TheOrchNow](#)



Bard

BOSTON CONSERVATORY AT BERKLEE

The Conservatory's progressive spirit is evident in the variety of music-making opportunities and the quality of our world-class faculty, which challenges you to define the kind of musician you want to be. This approach, combined with our focused training, is critical to the development of both your technical skills and your artistic voice. You'll have the opportunity to work with musicians from a rich diversity of cultures and across a range of styles, while being immersed in an ever-evolving learning environment orchestrated entirely with your future in mind.

WHAT DISTINGUISHES THIS SCHOOL?

Boston Conservatory at Berklee is internationally recognized as an innovative leader among conservatory programs focused on elevating every aspect of the performing arts. The institution is committed to making all forms of performing arts a more visible and valued dimension of communities here and abroad.

LOCATION 8 Fenway
Boston, MA 02215
UNITED STATES
bostonconservatory.berklee.edu/

ADMISSIONS
617-912-9153
conservatoryadmissions@berklee.edu

Audition Requirements [Audition Requirements](#)

FINANCIAL INFORMATION
[Tuition & Fees](#) / [Financial Aid & Scholarships](#)

CAREER / POST-GRADUATION ASSISTANCE
[The Berklee Career Center](#) provides expert guidance, cutting-edge resources, and professional



development experiences to help our diverse body of students achieve their career goals.

KEY STATISTICS (college level and above)
351 music students
Music Faculty: **43** full time, **71** adjunct

AREAS OF STUDY

Brass • Collaborative Piano • Composition (Performance) • Conducting • Music Business • Organ • Piano • Strings • Vocal Arts/Opera • Winds & Percussion • Marimba • Musical Theater • Contemporary Classical Music Performance • Vocal Pedagogy: Classical Voice • Vocal Pedagogy: Musical Theater

DEGREE PROGRAMS

[Undergraduate Programs](#) / [Graduate Programs](#)

ADDITIONAL PROGRAMS (non-matriculating/prep)
[Summer Programs](#)
[Extension Programs](#)

ONLINE COURSES

[Online courses information](#)
Additional plans still under consideration

PANDEMIC & SAFETY: SCHOOL POLICIES

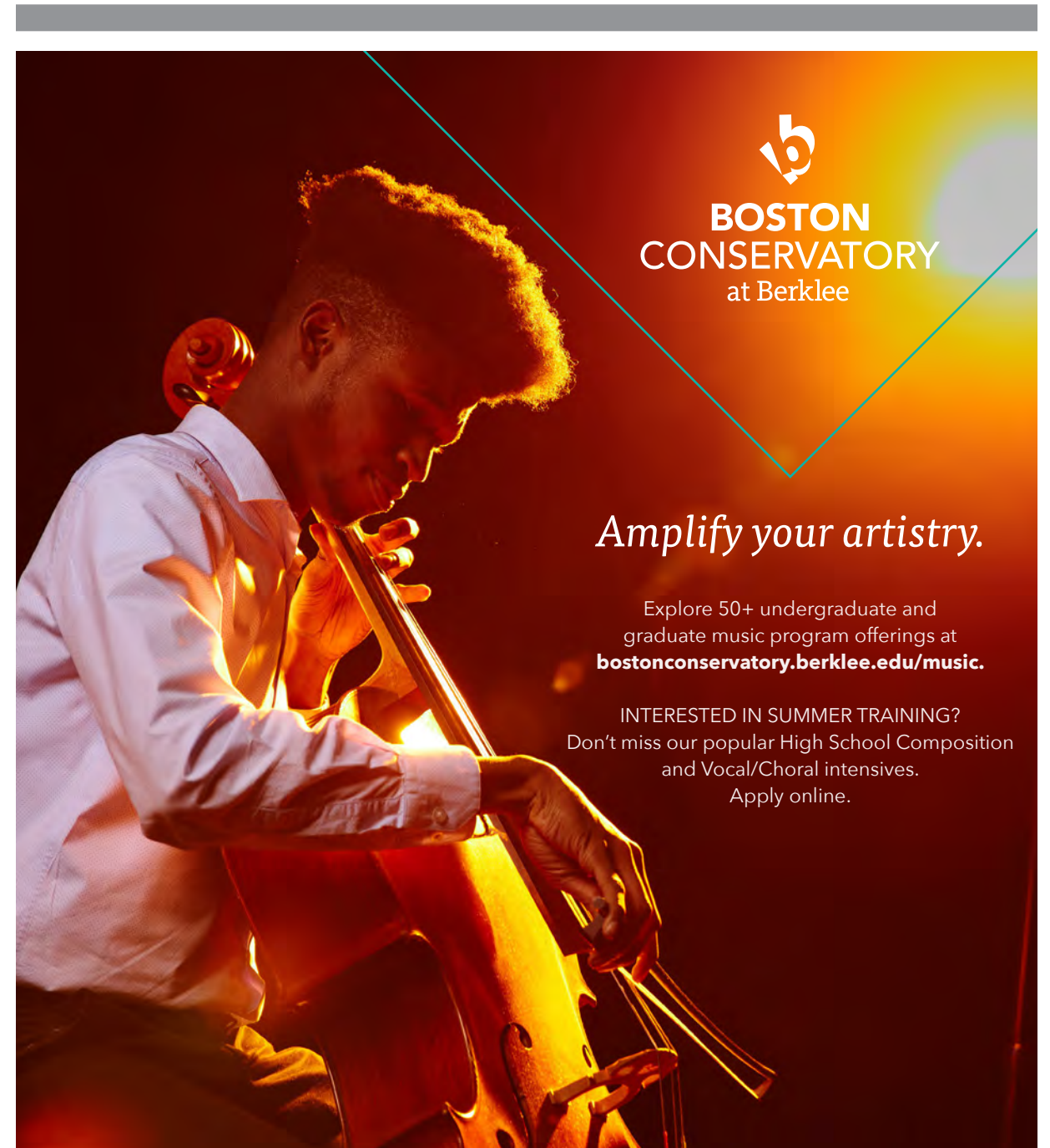
✓=Yes ✗=No

Proof of vaccination required?
✓ Students ✗ Faculty ✗ Staff

Proof of a negative COVID-19 test required?
✓ Students ✓ Faculty ✓ Administration & staff

Reduced density being considered in:
✓ On-campus housing ✓ Class and/or ensembles

SOCIAL LINKS    



BOSTON UNIVERSITY SCHOOL OF MUSIC

WHAT DISTINGUISHES THIS SCHOOL?

The Boston University School of Music is a community of academically and artistically extraordinary musicians within a major research university located in one of the great music capitals of America. We are committed to the highest artistic and professional standards in performance, composition, music education, and musicology.

LOCATION 855 Commonwealth Avenue
Boston, MA 02215
UNITED STATES
www.bu.edu/cfa

ADMISSIONS 617-353-3341
cfamusic@bu.edu

Audition Requirements [Audition Requirements](#)

FINANCIAL INFORMATION

[Tuition & Fees](#) / [Financial Aid & Scholarships](#)

CAREER / POST-GRADUATION ASSISTANCE

Throughout the year, Boston University School of Music offers a series of career development workshops taught by alumni and professionals in their field through the [Center for Career Development](#). See also [internships, jobs, fellowships, and grant opportunities](#).

KEY STATISTICS (college level and above)

500 music students
Music Faculty: **70** full time, **88** adjunct

AREAS OF STUDY

Brass • Collaborative Piano • Composition (Performance) • Conducting • Early Music • Jazz Studies & Contemporary Media • Music Business • Music Education • Musicology • Music Therapy • Organ • Piano • Strings • Vocal Arts/Opera

DEGREE PROGRAMS

[Undergraduate Programs](#) / [Graduate Programs](#)

ONLINE COURSES

[Online courses information](#)
Up to 25% will be available as hybrid or online-only courses

PANDEMIC & SAFETY: SCHOOL POLICIES

[Policies & Procedures for this school](#)

Proof of vaccination required?

✓ Students ✓ Faculty ✓ Staff

Proof of a negative COVID-19 test required?

✓ Students ✓ Faculty ✓ Administration & staff

Reduced density being considered in:

✗ On-campus housing ✗ Class and/or ensembles

SOCIAL LINKS



THE BUCHMANN-MEHTA SCHOOL OF MUSIC

Tel Aviv University

WHAT DISTINGUISHES THIS SCHOOL?

A partnership between the Israel Philharmonic Orchestra and Tel Aviv University, the BMSM has an intimate relationship with the IPO's musicians (many on faculty). Students benefit from master classes from the IPO's guest stars. Alumni span Itzhak Perlman, Menahem Pressler, and Lahav Shani. Free tuition, plus possible benefits for international students.

LOCATION Tel Aviv University
Tel Aviv 6997801
ISRAEL
en-arts.tau.ac.il/Music

ADMISSIONS +972 3-640-8415
interprog@tauex.tau.ac.il

Audition Requirements [Audition Requirements](#)

FINANCIAL INFORMATION

[Tuition & Fees](#)

KEY STATISTICS (college level and above)

274 music students
Music Faculty: **50** full time, **8** adjunct

AREAS OF STUDY

Brass • Composition (Performance) • Conducting • Music Education • Musicology • Organ • Piano • Strings • Vocal Arts/Opera • Winds & Percussion • All instruments

DEGREE PROGRAMS

[Undergraduate Programs](#) / [Graduate Programs](#)

PANDEMIC & SAFETY: SCHOOL POLICIES

The Buchmann-Mehta School of Music adheres strictly to Israeli Ministry of Health guidelines and constantly adjusts its COVID precautions according to government regulations and advice.

✓=Yes ✗=No

Proof of vaccination required?

✗ Students ✗ Faculty ✗ Staff

Proof of a negative COVID-19 test required?

✗ Students ✗ Faculty ✗ Administration & staff

Reduced density being considered in:

✗ On-campus housing ✗ Class and/or ensembles

SOCIAL LINKS



SARAH AND ERNEST BUTLER SCHOOL OF MUSIC

The University of Texas at Austin

WHAT DISTINGUISHES THIS SCHOOL?

Located in one of our nation's most musical cities, the Butler School of Music at The University of Texas at Austin offers comprehensive undergraduate and graduate programs designed to prepare artists, thinkers, makers, and teachers ready and able to make profound contributions to the future of music.

LOCATION 2406 Robert Dedman Drive
Stop E3100
Austin, TX 78712-1555
UNITED STATES
www.music.utexas.edu

ADMISSIONS 512-471-7764
uga@mail.music.utexas.edu

Audition Requirements [Audition Requirements](#)

FINANCIAL INFORMATION

[Tuition & Fees](#) / [Financial Aid & Scholarships](#)

CAREER / POST-GRADUATION ASSISTANCE

[Fine Arts Career Services](#) offers resources tailored to the College of Fine Arts undergraduate and graduate student body. The dedicated team of fine arts career advisors works extensively with students to prepare them for an increasingly competitive arts industry. Graduation isn't the end of a student's relationship with FACS. The office remains accessible to alumni of the college for life. Career advising and planning services are also available from the university's [Center for Strategic Advising & Career Counseling](#).

KEY STATISTICS (college level and above)

650 music students
Music Faculty: **85** full time, **10** adjunct

AREAS OF STUDY

Brass • Collaborative Piano • Composition (Performance) • Conducting • Early Music • Jazz Studies & Contemporary Media • Music Education • Musicology • Organ • Piano • Strings • Vocal Arts/Opera • Winds & Percussion • Chamber Music • Ethnomusicology • Literature and Pedagogy • Music Theory • Opera Coaching • Opera Directing

DEGREE PROGRAMS

[Bachelor of Arts](#), [Bachelor of Music](#), [Master of Music](#), [Artist Diploma](#), [Doctor of Musical Arts](#)

PANDEMIC & SAFETY: SCHOOL POLICIES

[Policies & Procedures for this school](#)

✓=Yes ✗=No

Proof of vaccination required?

✗ Students ✗ Faculty ✗ Staff

Proof of a negative COVID-19 test required?

✗ Students ✗ Faculty ✗ Administration & staff

Reduced density being considered in:

✗ On-campus housing ✓ Class and/or ensembles

SOCIAL LINKS



CARNEGIE MELLON UNIVERSITY SCHOOL OF MUSIC

WHAT DISTINGUISHES THIS SCHOOL?

The School of Music combines the strengths of a conservatory with those of a global research university. Students are a part of a diverse fine arts community on campus and in the city of Pittsburgh.

LOCATION 5000 Forbes Avenue
Pittsburgh, PA 15213
UNITED STATES
music.cmu.edu/

ADMISSIONS

412-268-4118
music-admissions@andrew.cmu.edu

Audition Requirements [Audition Requirements](#)

FINANCIAL INFORMATION

[Tuition & Fees](#) / [Financial Aid & Scholarships](#)

CAREER / POST-GRADUATION ASSISTANCE

Our distinguished alumni populate the ranks of the world's most prestigious orchestras, opera companies, and faculties including: the New York Philharmonic, Chicago Symphony Orchestra, The Metropolitan Opera, Harvard University, Prague Philharmonia, Oberlin College & Conservatory, Boston Pops, BBC Orchestras, Lyric Opera of Chicago, and many more.

KEY STATISTICS (college level and above)

350 music students
Music Faculty: **35** full time, **51** adjunct

AREAS OF STUDY

Brass • Collaborative Piano • Composition (Performance) • Conducting • Music Business • Music Education • Organ • Piano • Strings • Vocal Arts/Opera • Winds & Percussion • Electronic Music • Music and Technology • Music Entrepreneurship • Orchestral Studies

DEGREE PROGRAMS

[Undergraduate Programs](#) / [Graduate Programs](#)
Additional details: Interdisciplinary degrees (BXA)

PANDEMIC & SAFETY: SCHOOL POLICIES

[Policies & Procedures for this school](#)

✓=Yes ✗=No

Proof of vaccination required?

✓ Students ✗ Faculty ✗ Staff

Proof of a negative COVID-19 test required?

✓ Students ✓ Faculty ✓ Administration & staff

Reduced density being considered in:

✓ On-campus housing ✓ Class and/or ensembles

SOCIAL LINKS



CLEVELAND INSTITUTE OF MUSIC

WHAT DISTINGUISHES THIS SCHOOL?

CIM is an independent conservatory known for superior orchestral, chamber music, composition, piano, and voice programs at both the undergraduate and graduate levels. Its world-renowned faculty members—many of whom are in The Cleveland Orchestra—are eminent performers and pedagogues who cultivate life-long mentoring relationships with their students.

LOCATION 11021 East Boulevard
Cleveland, OH 44106
UNITED STATES
www.cim.edu/

ADMISSIONS 216-795-3107
admission@cim.edu

Audition Requirements [Audition Requirements](#)

FINANCIAL INFORMATION

[Tuition & Fees](#) / [Financial Aid & Scholarships](#)

CAREER / POST-GRADUATION ASSISTANCE

CIM's education focuses on high-level performance artistry coupled with the practical and essential skills necessary for a seamless transition into a professional career. For much of its nearly 100-year history, CIM's individual faculty members have engaged in career-focused coaching of students and alumni. The [CIM Center for Innovative Musicianship \(CIM²\)](#) cements these tremendous career resources by building an educational framework, including the coursework and experiential learning necessary for successful career development.

KEY STATISTICS (college level and above)

350 music students
Music Faculty: **29** full time, **80** adjunct

AREAS OF STUDY

Brass • Collaborative Piano • Composition (Performance) • Conducting • Music Therapy • Organ • Piano • Strings • Vocal Arts/Opera • Winds & Percussion • Classical Guitar • Music Theory (as an undergraduate double major only) • Suzuki Pedagogy (master's program only)

DEGREE PROGRAMS

[Undergraduate Programs](#) / [Graduate Programs](#)
Additional details: Minor and dual degree programs offered in association with Case Western Reserve University

PANDEMIC & SAFETY: SCHOOL POLICIES

✓=Yes ✗=No

Proof of vaccination required?

✓ Students ✓ Faculty ✓ Staff

Proof of a negative COVID-19 test required?

✓ Students ✓ Faculty ✗ Administration & staff

Reduced density being considered in:

✗ On-campus housing ✗ Class and/or ensembles

SOCIAL LINKS    

At The University of Michigan, we know careers in music are as diverse as the students we serve. That's why we offer personalized training and resources to help our students turn their ideas into action, and launch professional careers that are sustainable and impactful.

Apply by December 1
smt.d.umich.edu



M SCHOOL OF
MUSIC, THEATRE & DANCE
UNIVERSITY OF MICHIGAN



COLBURN CONSERVATORY OF MUSIC

WHAT DISTINGUISHES THIS SCHOOL?

All receive full-tuition scholarships, room, and board. The Colburn Orchestra emulates a professional orchestra experience with distinguished guest conductors and Music Director Yehuda Gilad. Students perform alongside faculty and guest artists as part of the Colburn Chamber Music Society. Career development and wellness programs support all areas of student well-being.

LOCATION 200 South Grand Avenue
Los Angeles, CA 90012
UNITED STATES
www.colburnschool.edu

ADMISSIONS 213-621-4534
admissions@colburnschool.edu

Audition Requirements [Audition Requirements](#)

FINANCIAL INFORMATION

[Tuition & Fees](#) / [Financial Aid & Scholarships](#)

CAREER / POST-GRADUATION ASSISTANCE

The Colburn School offers a range of resources to help students and alumni plan and build their professional careers. All Conservatory students take two essential classes: the Teaching Musician, which equips them with pedagogy training; and the Working Musician, which offers a number of short courses designed to help them manage their careers as musicians.

The newly formed [Center for Innovation and Community Impact](#) offers individual advising and planning to conservatory students. Career development staff work with students one-on-one and find opportunities for them to further explore their interests.

KEY STATISTICS (college level and above)

130 music students
Music Faculty: 15 full time, 26 adjunct

AREAS OF STUDY

Brass • Conducting • Piano • Strings • Winds & Percussion

DEGREE PROGRAMS

[Undergraduate Programs](#) / [Graduate Programs](#)
Additional details: Bachelor of Music in Performance; Master of Music in Performance; Master of Music in Chamber Music; Undergraduate Performance Diploma; Undergraduate Performance Diploma with Conducting Emphasis; Graduate Artist Diploma with Emphasis in Performance, Chamber Music, or Conducting; Graduate Professional Studies Certificate

ADDITIONAL PROGRAMS (non-matriculating/prep)

[Music Academy for pre-college training](#)
[Community School](#)
[Trudl Zipper Dance Institute](#)

PANDEMIC & SAFETY: SCHOOL POLICIES

[Policies & Procedures for this school](#)

✓=Yes ✗=No

Proof of vaccination required?

✓ Students ✗ Faculty ✗ Staff

Proof of a negative COVID-19 test required?

✓ Students ✓ Faculty ✗ Administration & staff

Reduced density being considered in:

✗ On-campus housing ✓ Class and/or ensembles

SOCIAL LINKS



CONSERVATORIO DI MUSICA "ARRIGO BOITO"

WHAT DISTINGUISHES THIS SCHOOL?

High-level courses in classical, jazz, pop/rock and early music in a strategic production center in the North of Italy.

LOCATION Via del Conservatorio 27/A
43121 Parma
ITALY
www.conservatorio.pr.it/en/

ADMISSIONS

+39 0521 381911
segreteria.didattica@conservatorio.pr.it

Audition Requirements [Audition Requirements](#)

FINANCIAL INFORMATION

[Financial Aid & Scholarships](#)

CAREER / POST-GRADUATION ASSISTANCE

[Career Assistance](#)

KEY STATISTICS (college level and above)

500 music students
Music Faculty: 120 full time, 30 adjunct

AREAS OF STUDY

Brass • Collaborative Piano • Composition (Performance) • Conducting • Early Music • Jazz Studies & Contemporary Media • Music Business • Music Education • Music Therapy • Organ • Piano • Strings • Vocal Arts/Opera • Pop/Rock • Accordion

DEGREE PROGRAMS

[Undergraduate Programs](#) / [Graduate Programs](#)

ONLINE COURSES

[Online courses information](#)

Additional plans still under consideration

PANDEMIC & SAFETY: SCHOOL POLICIES

✓=Yes ✗=No

Proof of vaccination required?

✓ Students ✓ Faculty ✓ Staff

Proof of a negative COVID-19 test required?

✓ Students ✓ Faculty ✓ Administration & staff

Reduced density being considered in:

✗ On-campus housing ✓ Class and/or ensembles

SOCIAL LINKS



THE CRANE SCHOOL OF MUSIC

State University of New York at Potsdam

WHAT DISTINGUISHES THIS SCHOOL?

Crane is an undergraduate-focused music school with attentive full-time faculty. We are part of SUNY Potsdam, an arts-centric school, with 575 music majors. At Crane, students can choose from a wide variety of programs and majors.

LOCATION 44 Pierrepont Avenue
Potsdam, NY 13676
UNITED STATES
www.potsdam.edu/crane

ADMISSIONS 315-267-2812
auditions@potsdam.edu

Audition Requirements [Audition Requirements](#)

FINANCIAL INFORMATION

[Tuition & Fees](#) / [Financial Aid & Scholarships](#)

CAREER / POST-GRADUATION ASSISTANCE

Students in each major work closely with faculty and staff at Crane and SUNY Potsdam's [Career Services Office](#) in formulating their post-graduation plans. Crane alumni include thousands of educators, performers, composers, researchers, leaders in music industry, and musicians of renown, a network of graduates who can be found throughout North America and around the world.

KEY STATISTICS (college level and above)

575 music students
Music Faculty: **74** full time, **18** adjunct

AREAS OF STUDY

Arts Leadership • Brass • Composition (Performance) • Media studies (including audio and video production) • Music Business • Musicology • Organ • Piano • Strings • Vocal Arts/Opera • Music Theory

DEGREE PROGRAMS

[Undergraduate Programs](#) / [Graduate Programs](#)

ONLINE COURSES

[Online courses information](#)
Up to 25% will be available as hybrid or online-only courses

PANDEMIC & SAFETY: SCHOOL POLICIES

[Policies & Procedures for this school](#)

✓=Yes ✗=No

Proof of vaccination required?

✓ Students ✗ Faculty ✗ Staff

Proof of a negative COVID-19 test required?

✓ Students ✓ Faculty ✓ Administration & staff

Reduced density being considered in:

✗ On-campus housing ✗ Class and/or ensembles

SOCIAL LINKS  

CURTIS INSTITUTE OF MUSIC

WHAT DISTINGUISHES THIS SCHOOL?

Curtis's celebrated faculty includes a high proportion of actively performing musicians whose experience provides students with a direct link to life as a professional musician today. With a student body of about 150 and 100 faculty members, all students receive highly personalized attention.

LOCATION 1726 Locust Street
Philadelphia, PA 19103
UNITED STATES
www.curtis.edu

ADMISSIONS 215-717-3167
admissions@curtis.edu

Audition Requirements [Audition Requirements](#)

FINANCIAL INFORMATION

[Tuition & Fees](#) / [Financial Aid & Scholarships](#)

CAREER / POST-GRADUATION ASSISTANCE

Curtis offers several professional bridge programs designed for young artists beginning their professional careers. These include fellowship programs for conductors and string quartets that offer numerous performance opportunities. The post-graduate Community Artist Fellowship program brings art access and education to underserved communities, while providing training in teaching artistry, interactive performance, and strategic planning.

Alumni resources include access to the Careers in Music Speaker Series at Curtis; an online alumni engagement community; and an alumni e-mail address to maintain a visible presence with Curtis.

The Young Alumni Fund (YAF) is an annual grant program that provides grantees advice and support

from mentors within the Curtis community.

KEY STATISTICS (college level and above)

155 music students
Music Faculty: **3** full time, **115** adjunct
155 scholarships awarded

AREAS OF STUDY

Brass • Composition (Performance) • Conducting • Organ • Piano • Strings • Vocal Arts/Opera • Winds & Percussion

DEGREE PROGRAMS

[Undergraduate Programs](#)
[Master of Music in Opera](#)
[Post-Baccalaureate Diploma](#)
[Professional Studies Certificate in Opera](#)
Additional details: Fellowship Programs:
[Conducting Fellowship](#); [String Quartet in Residence](#);
[Community Artist Fellowship program](#)

ONLINE COURSES

[Online courses information](#)
Additional plans still under consideration

PANDEMIC & SAFETY: SCHOOL POLICIES

[Policies & Procedures for this school](#)

✓=Yes ✗=No

Proof of vaccination required?

✓ Students ✓ Faculty ✓ Staff

Proof of a negative COVID-19 test required?

✓ Students ✓ Faculty ✓ Administration & staff

Reduced density being considered in:

✓ On-campus housing ✓ Class and/or ensembles

SOCIAL LINKS     

DEPAUL UNIVERSITY SCHOOL OF MUSIC



The DePaul School of Music is an inclusive and compassionate community of musicians dedicated to artistry, excellence, diversity, and leadership in music. Guided by the University's values of social justice, we prepare students for dynamic 21st century careers.

WHAT DISTINGUISHES THIS SCHOOL?

The DePaul University School of Music offers conservatory style, performance-based study within a large university in Chicago, a destination city for world-class arts. Students benefit from individualized study and rehearsal at the highest level among a supportive community of individuals striving to be their best.

LOCATION 804 West Belden Avenue
Chicago, IL 60614
UNITED STATES
music.depaul.edu

ADMISSIONS 773-325-7444
musicadmissions@depaul.edu

Audition Requirements [Audition Requirements](#)
Audition requirements vary slightly depending upon the degree an applicant is seeking.

FINANCIAL INFORMATION
[Tuition & Fees](#) / [Financial Aid & Scholarships](#)

CAREER / POST-GRADUATION ASSISTANCE
[Career Services](#) provides information and resources for School of Music students and alumni on various music and arts-related career opportunities, including an Alumni Sharing Knowledge Network connecting DePaul students and graduates

with alumni to explore college and professional transitions, life challenges and career questions.

KEY STATISTICS (college level and above)
410 music students
Music Faculty: 30 full time, 125 adjunct

AREAS OF STUDY

Arts Leadership • Brass • Collaborative Piano
• Composition (Performance) • Jazz Studies & Contemporary Media • Media studies (including audio and video production) • Music Business
• Music Education • Organ • Piano • Strings • Vocal Arts/Opera • Winds & Percussion

DEGREE PROGRAMS

[Undergraduate Programs](#) / [Graduate Programs](#)
Additional details: Bachelor of Arts in Music

ONLINE COURSES

[Online courses information](#)
Additional plans still under consideration

PANDEMIC & SAFETY: SCHOOL POLICIES

[Policies & Procedures for this school](#)

✓=Yes X=No

Proof of vaccination required?
✓ Students ✓ Faculty ✓ Staff

Proof of a negative COVID-19 test required?
✓ Students ✓ Faculty ✓ Administration & staff

Reduced density being considered in:
X On-campus housing ✓ Class and/or ensembles

SOCIAL LINKS    



Whether you perform it or teach it. Write it or produce it. You'll need the training and tools to turn it into a career. Designed to be rigorous and collaborative, our programs of study give you the experience and the knowledge to confidently pursue a life dedicated to music.

More than a Conservatory.

music.depaul.edu | [773.325.7444](tel:773.325.7444) | musicadmissions@depaul.edu

DEPAUW UNIVERSITY

WHAT DISTINGUISHES THIS SCHOOL?

One of the first schools of music, est. 1884 • Double major in music and our College of Liberal Arts
• Undergraduate Only with Abundant Performing Opportunities • Four Flexible Degree Programs
• The 21st-Century Musician Initiative • Green Guest Artists Series.

LOCATION 600 South Locust Street
Greencastle, IN 46135
UNITED STATES
music.depauw.edu/

ADMISSIONS 765-658-4118
georgepalton@depauw.edu

Audition Requirements [Audition Requirements](#)

FINANCIAL INFORMATION

[Tuition & Fees](#) / [Financial Aid & Scholarships](#)

CAREER / POST-GRADUATION ASSISTANCE

The Hubbard Center for Student Engagement assists all students in post-graduate employment or study. Experiential learning that could include internships, international study, and additional performance opportunities is required.

KEY STATISTICS (college level and above)

125 music students

Music Faculty: 20 full time, 29 adjunct

AREAS OF STUDY

Brass • Jazz Studies & Contemporary Media
• Music Education • Piano • Strings • Vocal Arts/Opera
• Winds & Percussion • Musical Theatre

DEGREE PROGRAMS

[Undergraduate Programs](#)

PANDEMIC & SAFETY: SCHOOL POLICIES

[Policies & Procedures for this school](#)

✓=Yes ✗=No

Proof of vaccination required?

✓ Students ✗ Faculty ✗ Staff

Proof of a negative COVID-19 test required?

✗ Students ✗ Faculty ✗ Administration & staff

Reduced density being considered in:

✗ On-campus housing ✗ Class and/or ensembles

SOCIAL LINKS



JUNE 13-25, 2022 • POWELL RIVER, BRITISH COLUMBIA, CANADA

**SYMPHONY PERFORMANCES
MASTERCLASSES
CHAMBER MUSIC CONCERTS
RECITALS & WORKSHOPS**

**CONCERTO COMPETITION
AUDITION TRAINING
PRIVATE LESSONS
CAREER COACHING**

SUBSTANTIAL FULL & PARTIAL SCHOLARSHIPS ARE AVAILABLE

LEARN MORE AT PRISMAFESTIVAL.COM

EASTMAN SCHOOL OF MUSIC

University of Rochester



EASTMAN
SCHOOL OF MUSIC
UNIVERSITY OF ROCHESTER

The Eastman School of Music strives:

- To create a musical community that is rich with cultural, social, and intellectual diversity.
- To give the student an intensive professional education in his or her musical discipline.
- To prepare each student with a solid foundation in music and an expansive education in the liberal arts.
- To develop an informed and inquiring mind that enables each graduate to engage the fundamental issues of his or her art and to become an effective cultural leader in society.

WHAT DISTINGUISHES THIS SCHOOL?

Eastman is dedicated to the highest levels of artistry and scholarship and to the broad education of young musicians within the context of a university. Our students enjoy a challenging but nurturing environment that focuses on artistic excellence while encouraging the pursuit of individual paths and interests.

LOCATION 26 Gibbs Street
Rochester, NY 14604
UNITED STATES
www.esm.rochester.edu/

ADMISSIONS 800-388-9695
admissions@esm.rochester.edu

Audition Requirements [Audition Requirements](#)

FINANCIAL INFORMATION
[Tuition & Fees](#) / [Financial Aid & Scholarships](#)

CAREER / POST-GRADUATION ASSISTANCE
[Career assistance at Eastman School of Music](#)

KEY STATISTICS (college level and above)
900 music students
Music Faculty: **135** full time, **50** adjunct

AREAS OF STUDY

Arts Leadership • Brass • Collaborative Piano
• Composition (Performance) • Conducting • Early Music • Jazz Studies & Contemporary Media • Media studies (including audio and video production)
• Music Education • Musicology • Organ • Piano
• Strings • Vocal Arts/Opera • Winds & Percussion

DEGREE PROGRAMS

[Undergraduate Programs](#) / [Graduate Programs](#)

ADDITIONAL PROGRAMS (non-matriculating/prep)
[Eastman Institute for Music Leadership](#)
[Music Theory Fundamentals in 4 weeks](#)

PANDEMIC & SAFETY: SCHOOL POLICIES

[Policies & Procedures for this school](#)

✓=Yes ✗=No

Proof of vaccination required?

✓ Students ✗ Faculty ✗ Staff

Proof of a negative COVID-19 test required?

✗ Students ✗ Faculty ✗ Administration & staff

Reduced density being considered in:

✗ On-campus housing ✗ Class and/or ensembles

SOCIAL LINKS    



Learn

from a dedicated
residential faculty



Belong

to a fiercely
supportive community



Discover

your own path



Scan here to take a virtual tour of campus

CELEBRATING 100 YEARS

For application information visit esm.rochester.edu/admissions



UNIVERSITY OF ROCHESTER
**Eastman
School of Music**
100 YEARS | 1921-2021

HANNS EISLER SCHOOL OF MUSIC BERLIN

WHAT DISTINGUISHES THIS SCHOOL?

Musical excellence is our leitmotif and only the highest standards prevail. Exceptional musical personalities guarantee the quality of our musical education. We promote talent in its full-scale development—from the attainment of the finest technical precision to being ready to perform on stage.

LOCATION Hochschule für Musik Hanns Eisler Berlin
Charlottenstr. 55
D-10117 Berlin
GERMANY
www.hfm-berlin.de/en/

ADMISSIONS +49 (0) 30 688305-830
studienberatung@hfm-berlin.de

Audition Requirements [Audition Requirements](#)

FINANCIAL INFORMATION
[Tuition & Fees](#) / [Financial Aid & Scholarships](#)

CAREER / POST-GRADUATION ASSISTANCE
[Eisleriana Artists Agency](#)

KEY STATISTICS (college level and above)

500 music students
Music Faculty: **90** full time, **249** adjunct
80 scholarships awarded

AREAS OF STUDY

Brass • Collaborative Piano • Composition (Performance) • Conducting • Organ • Piano • Strings • Vocal Arts/Opera • Winds & Percussion • Stage Direction (Opera & Music Theatre) • Chamber Music • Repetiteur • Lied Interpretation for Pianists • Historical and Contemporary Compositional Technique • Electroacoustic Music • Production Dramaturgy for Music Theatre

DEGREE PROGRAMS

[Undergraduate Programs](#) / [Graduate Programs](#)

ADDITIONAL PROGRAMS (non-matriculating/prep)
[Competitions](#)

PANDEMIC & SAFETY: SCHOOL POLICIES
[Policies & Procedures for this school](#)

✓=Yes ✗=No

Proof of vaccination required?

✗ Students ✗ Faculty ✗ Staff

Proof of a negative COVID-19 test required?

✓ Students ✓ Faculty ✓ Administration & staff

Reduced density being considered in:

✗ On-campus housing ✓ Class and/or ensembles

SOCIAL LINKS    

FLORIDA STATE UNIVERSITY COLLEGE OF MUSIC

WHAT DISTINGUISHES THIS SCHOOL?

FSU is home to one of the largest and most diverse music programs in the country, offering 25 degree programs at the undergraduate level alone. Our students participate in nearly 50 ensembles and perform in more than 500 concerts each year. Our graduates are highly successful beyond the classroom.

LOCATION 122 North Copeland Street
Tallahassee, FL 32301
UNITED STATES
music.fsu.edu/

ADMISSIONS 850-644-6102
musicadmissions@fsu.edu

Audition Requirements [Audition Requirements](#)

FINANCIAL INFORMATION
[Tuition & Fees](#) / [Financial Aid & Scholarships](#)

CAREER / POST-GRADUATION ASSISTANCE
Faculty mentors take an active role in placing and connecting their students to career opportunities, and a Career Liaison from the [FSU Career Center](#) works directly with the College of Music. The Allen Music Library sponsors workshops on résumé writing, and career development is a major focus of Music Entrepreneurship classes. Many programs include an internship component that helps lead directly to the first job. Music Education and Music Therapy programs have 100% job placement rate.

KEY STATISTICS (college level and above)

1050 music students
Music Faculty: **88** full time, **6** adjunct

AREAS OF STUDY

Arts Leadership • Brass • Collaborative Piano • Composition (Performance) • Conducting • Jazz Studies & Contemporary Media • Music Business • Music Education • Musicology • Music Therapy • Organ • Piano • Strings • Vocal Arts/Opera • Winds & Percussion • Piano Technology • Piano Pedagogy • Sacred Music • Commercial Music • Music Theory • Opera Directing/Coaching

DEGREE PROGRAMS

[Undergraduate Programs](#) / [Graduate Programs](#)

Additional details: Summer Master of Music Education

ADDITIONAL PROGRAMS (non-matriculating/prep)
[Summer Music Camps](#)

PANDEMIC & SAFETY: SCHOOL POLICIES
[Policies & Procedures for this school](#)

✓=Yes ✗=No

Proof of vaccination required?

✗ Students ✗ Faculty ✗ Staff

Proof of a negative COVID-19 test required?

✗ Students ✗ Faculty ✗ Administration & staff

Reduced density being considered in:

✗ On-campus housing ✗ Class and/or ensembles

SOCIAL LINKS    

THE FREDONIA SCHOOL OF MUSIC

State University of New York at Fredonia

WHAT DISTINGUISHES THIS SCHOOL?

Fredonia is leading the next generation of music professionals. Our Music Education program boasts an incredible 100% job placement rate after graduation, and our faculty and alumni are GRAMMY award-winning year after year. Choose the power of Fredonia, and turn your passion into your profession.

LOCATION 280 Central Avenue
Fredonia, NY 14063
UNITED STATES
www.fredonia.edu/music

ADMISSIONS 716-673-3151
music@fredonia.edu

Audition Requirements [Audition Requirements](#)

FINANCIAL INFORMATION
[Tuition & Fees](#) / [Financial Aid & Scholarships](#)

CAREER / POST-GRADUATION ASSISTANCE
[Fredonia Career Development Office](#)

KEY STATISTICS (college level and above)
548 music students
Music Faculty: 50 full time, 41 adjunct

AREAS OF STUDY

Arts Leadership • Brass • Collaborative Piano
• Composition (Performance) • Conducting • Jazz Studies & Contemporary Media • Media studies (including audio and video production) • Music Business • Music Education • Musicology • Music Therapy • Organ • Piano • Strings • Vocal Arts/Opera
• Winds & Percussion • Sound Recording Technology

DEGREE PROGRAMS

[Undergraduate Programs](#) / [Graduate Programs](#)
Additional details: BA in Music (with tracks in performance, jazz, entrepreneurship, technology, and history & literature)

ADDITIONAL PROGRAMS (non-matriculating/prep)
[The Claudette Sorel Piano Competition & Piano Fellows Program](#)
[Robert Jordan Piano Festival](#)
[Fredonia Summer Music Festival](#)

ONLINE COURSES
[Online courses information](#)

PANDEMIC & SAFETY: SCHOOL POLICIES
[Policies & Procedures for this school](#)
✓=Yes ✗=No

Proof of vaccination required?
✓ Students ✗ Faculty ✗ Staff

Proof of a negative COVID-19 test required?
✓ Students ✓ Faculty ✓ Administration & staff

Reduced density being considered in:
✗ On-campus housing ✗ Class and/or ensembles

SOCIAL LINKS   

FROST SCHOOL OF MUSIC

University of Miami

WHAT DISTINGUISHES THIS SCHOOL?

The Frost School of Music is a dynamic place where exceptional students and faculty come together to transform the world of music. Brilliant performance, creativity, and scholarship are at our core.

LOCATION 5503 San Amaro Drive
Coral Gables, FL 33146
UNITED STATES
www.frost.miami.edu

ADMISSIONS 305-284-6168
admission.music@miami.edu

Audition Requirements
[Undergraduate](#) / [Graduate](#)

FINANCIAL INFORMATION
[Tuition & Fees](#) / [Financial Aid & Scholarships](#)

CAREER / POST-GRADUATION ASSISTANCE
Frost School of Music provides music career advisement to students during all years of study. The majority of students also enroll in music business courses. The University of Miami's Toppel Career Center is also available for consultation.

KEY STATISTICS (college level and above)
700 music students
Music Faculty: 80 full time, 40 adjunct

AREAS OF STUDY

Arts Leadership • Brass • Collaborative Piano
• Composition (Performance) • Conducting • Early Music • Jazz Studies & Contemporary Media • Media studies (including audio and video production)
• Music Business • Music Education • Musicology
• Music Therapy • Piano • Strings • Vocal Arts/Opera
• Winds & Percussion • Music Engineering Technology • Live Entertainment Management
• Musicology • Choral Conducting

DEGREE PROGRAMS
[Undergraduate Programs](#) / [Graduate Programs](#)

ONLINE COURSES
[Online courses information](#)
Additional plans still under consideration

PANDEMIC & SAFETY: SCHOOL POLICIES
[Policies & Procedures for this school](#)
✓=Yes ✗=No

Proof of vaccination required?
✗ Students ✓ Faculty ✓ Staff

Proof of a negative COVID-19 test required?
✓ Students ✗ Faculty ✗ Administration & staff

Reduced density being considered in:
✗ On-campus housing ✗ Class and/or ensembles

SOCIAL LINKS     

THE GLENN GOULD SCHOOL

The Royal Conservatory of Music

The mission of The Royal Conservatory of Music, which founded The Glenn Gould School, is to develop human potential. And, advancing the transformative effect that music and the arts have on society lies at the heart of everything The Royal Conservatory does. The Glenn Gould School builds on the Conservatory's 130-year history of excellence by providing talented classical music performers with the skills and attributes necessary for professional success.

WHAT DISTINGUISHES THIS SCHOOL?

The success of our graduates, many of whom now have successful careers as concert and recording artists, is a testament to our focus on performance training.

LOCATION TELUS Centre
for Performance and Learning
273 Bloor Street West
Toronto, ON M5S 1W2
CANADA
rcmusic.com/ggs

ADMISSIONS 800-462-3815
glenngooldschool@rcmusic.ca

Audition Requirements [Audition Requirements](#)

FINANCIAL INFORMATION
[Tuition & Fees](#) / [Financial Aid & Scholarships](#)

CAREER / POST-GRADUATION ASSISTANCE
[The Rebanks Family Fellowship and International Performance Residency Program](#) is a one-year postgraduate program of The Royal Conservatory's Glenn Gould School. Created for artists on the cusp of a professional career, it offers a rich curriculum for career development.



THE GLENN GOULD SCHOOL

KEY STATISTICS (college level and above)

130 music students
Music Faculty: 43 full time, 32 adjunct

AREAS OF STUDY

Brass • Organ • Piano • Strings • Vocal Arts/Opera
• Winds & Percussion

DEGREE PROGRAMS

[Bachelor of Music, Performance \(Honours\)](#)
Additional details: [Artist Diploma Program](#) (two-year) / [The Rebanks Family Fellowship and International Performance Residency Program](#) (one-year)

ADDITIONAL PROGRAMS (non-matriculating/prep)

[The Phil and Eli Taylor Performance Academy for Young Artists](#)
[The RCM Certificate Program](#)

ONLINE COURSES

[Online courses information](#)

PANDEMIC & SAFETY: SCHOOL POLICIES

[Policies & Procedures for this school](#)

Proof of vaccination required?

✗ Students ✗ Faculty ✗ Staff

Proof of a negative COVID-19 test required?

✗ Students ✗ Faculty ✗ Administration & staff

Reduced density being considered in:

✗ On-campus housing ✓ Class and/or ensembles

SOCIAL LINKS     



This is your classroom.

Study at The Glenn Gould School

Based in Toronto, GGS is a post-secondary institution with a focus on performance. Our school has **world-renowned faculty, numerous performance opportunities** in **exceptional facilities**, including the acclaimed Koerner Hall, **generous scholarship support**, and a **cap of 130 students**, each of whom receives **90 minutes** of individual studio instruction weekly.

The Glenn Gould School offers degrees and diplomas for three levels of study: Bachelor of Music, Performance (Honours)*, the Artist Diploma (for post-Bachelor studies), and The Rebanks Family Fellowship and International Performance Residency (for post-graduate studies).

Programs of Study

The Temerty Orchestral Program
working with noted conductors such as Tania Miller and Gabor Takács-Nagy

The Ichnatowycz Piano Program
under the leadership of James Anagnoson, Dean, includes distinguished artists and teachers John O'Connor and John Perry

Vocal Studies and the Price Opera Program
with Adrienne Pieczonka, Chair



rcmusic.com/ggs/prospectus



* This institution has been granted a consent by the Minister of Training, Colleges and Universities to offer this program for a seven-year term starting October 12, 2017. Prospective students are responsible for satisfying themselves that the program and the degree will be appropriate to their needs (e.g., acceptable to potential employers, professional licensing bodies or other educational institutions.)

GUILDHALL SCHOOL OF MUSIC & DRAMA

WHAT DISTINGUISHES THIS SCHOOL?

Guildhall School is one of the world's leading conservatories, highly regarded in the profession for intensive, dedicated training taught by renowned international teaching staff and through partnerships with the Barbican, London Symphony Orchestra, the BBC Symphony Orchestra, the Royal Opera House and the Academy of Ancient Music.

LOCATION Silk Street, Barbican
London EC2Y 8DT
UNITED KINGDOM
www.gsmd.ac.uk

ADMISSIONS +44 (0)20 7382 7144
music@gsmd.ac.uk

Audition Requirements

[Undergraduate requirements for repertoire](#)
[Postgraduate requirements for repertoire](#)

FINANCIAL INFORMATION

[Tuition & Fees](#) / [Financial Aid & Scholarships](#)

CAREER / POST-GRADUATION ASSISTANCE

Training at Guildhall School aims to equip you for the career of your choice. It combines academic rigor and artistic skill with a strong professional focus. All of our programs are closely engaged with the professions, through talks and workshops from visiting industry figures, work placements, mentoring, masterclasses, and performance collaborations. Many of our teaching staff continue to work on- or off-stage in their industry, and are well placed to provide insight, advice, and contacts within their profession. Undergraduate musicians

take modules that include advice on teaching, business, and marketing and professional portfolios. Electives include music administration and workshop skills in hospitals and schools.

KEY STATISTICS (college level and above)
738 music students
Music Faculty: 5 full time, **629** adjunct

AREAS OF STUDY

Brass • Collaborative Piano • Composition (Performance) • Conducting • Early Music • Jazz Studies & Contemporary Media • Media studies (including audio and video production) • Music Business • Musicology • Music Therapy • Organ • Piano • Strings • Vocal Arts/Opera • Winds & Percussion • Electronic and Produced Music • Opera Making & Writing

DEGREE PROGRAMS

[Undergraduate Programs](#) / [Graduate Programs](#)

ADDITIONAL PROGRAMS (non-matriculating/prep)
[Youth and Adult Learning](#)

PANDEMIC & SAFETY: SCHOOL POLICIES
✓=Yes ✗=No

Proof of vaccination required?
✗ Students ✗ Faculty ✗ Staff

Proof of a negative COVID-19 test required?
✗ Students ✗ Faculty ✗ Administration & staff

Reduced density being considered in:
✗ On-campus housing ✓ Class and/or ensembles

SOCIAL LINKS    

HALL-MUSCO CONSERVATORY OF MUSIC

Chapman University, College of Performing Arts

WHAT DISTINGUISHES THIS SCHOOL?

We specialize in undergraduate education for musicians, promoting their artistic, professional, and intellectual development. Our students enjoy exceptional performance opportunities in state-of-the-art facilities with internationally renowned faculty who know them by name. Come here to hone your craft and turn your passion into profession. Become anything imaginable.

LOCATION One University Drive
Orange, CA 92866
UNITED STATES
www.chapman.edu/copa/

ADMISSIONS 714-516-5223
copaadmit@chapman.edu

Audition Requirements

[Audition Requirements](#)—Students seeking admission to one of our music programs must follow University guidelines to apply and submit a Common Application. Each music program also requires a creative supplement, program-specific materials, and a letter of recommendation (if invited for an in-person audition).

FINANCIAL INFORMATION

[Tuition & Fees](#) / [Financial Aid & Scholarships](#)

CAREER / POST-GRADUATION ASSISTANCE
[Career Assistance](#)

KEY STATISTICS (college level and above)
220 music students
Music Faculty: 21 full time, **61** adjunct

AREAS OF STUDY

Brass • Collaborative Piano • Composition (Performance) • Conducting • Music Business • Music Education • Strings • Vocal Arts/Opera • Winds & Percussion

DEGREE PROGRAMS

[Undergraduate Programs](#) / [Graduate Programs](#)
Additional details: B.A. in Music, minors in music business, film music, general music, music technology; Interdisciplinary minor in musical theatre; B.M. in Music Performance (conducting, guitar, collaborative piano, solo piano, strings, vocal, woodwinds and brass); B.M. in Pre-Music Education Certification; M.M. in Keyboard Collaborative Arts

PANDEMIC & SAFETY: SCHOOL POLICIES
[Policies & Procedures for this school](#)

✓=Yes ✗=No

Proof of vaccination required?
✗ Students ✗ Faculty ✗ Staff

Proof of a negative COVID-19 test required?
✓ Students ✓ Faculty ✓ Administration & staff

Reduced density being considered in:
✗ On-campus housing ✗ Class and/or ensembles

SOCIAL LINKS    

THE HARTT SCHOOL

University of Hartford

WHAT DISTINGUISHES THIS SCHOOL?

The Hartt School is a truly collaborative environment where faculty embrace that success takes on endless forms. They get to know each student and guide them toward the future meant just for them. Hartt students engage with the professional world in meaningful ways to enhance their education and professional network.

LOCATION 200 Bloomfield Avenue
West Hartford, CT 06117
UNITED STATES
www.hartford.edu/hartt

ADMISSIONS 860-768-4465
harttadm@hartford.edu

Audition Requirements [Audition Requirements](#)

FINANCIAL INFORMATION

[Tuition & Fees](#) / [Financial Aid & Scholarships](#)

CAREER / POST-GRADUATION ASSISTANCE

At Hartt, students are provided professional experiences under faculty guidance and are fully prepared to begin their careers upon graduation. All degree programs at Hartt include career preparation coursework and undergraduate performance majors can choose a minor in arts management. The University of Hartford's career services office has a career counselor dedicated to the arts and resources to assist Hartt students in beginning their careers. The career services office remains a free resource to alumni.

KEY STATISTICS (college level and above)

400 music students
Music Faculty: 48 full time, **100** adjunct

AREAS OF STUDY

Arts Leadership • Brass • Composition (Performance) • Conducting • Early Music • Jazz Studies & Contemporary Media • Media studies (including audio and video production) • Music Business • Music Education • Musicology • Piano • Strings • Vocal Arts/Opera • Winds & Percussion • Music Management • Acoustical Engineering and Music • Performing Arts Management • Music Theatre • Actor Training • Stage Management • Technical Theatre • Ballet Pedagogy • Dance Performance

DEGREE PROGRAMS

[Undergraduate Programs](#) / [Graduate Programs](#)

ADDITIONAL PROGRAMS (non-matriculating/prep)

[Hartt School Community Division](#)

PANDEMIC & SAFETY: SCHOOL POLICIES

[Policies & Procedures for this school](#)

✓=Yes ✗=No

Proof of vaccination required?

✓ Students ✓ Faculty ✓ Staff

Proof of a negative COVID-19 test required?

✓ Students ✗ Faculty ✗ Administration & staff

Reduced density being considered in:

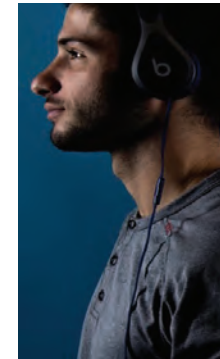
✗ On-campus housing ✗ Class and/or ensembles

SOCIAL LINKS



Northeastern University

Music at Northeastern University:
for students destined to become change agents
and thought leaders in industry, culture, and society



Undergraduate Programs:

- B.A. in Music
- B.S. in Music Industry
- B.S. in Music Technology
- Combined majors in Music and Computer Information Science, Physics, Engineering, Game Design, Psychology, and Communication Studies
- Ten minors in music-specific disciplines

Co-op and Dialogues of Civilization:

The Co-op program sets Northeastern apart from other institutions and leverages NU's excellence in experiential learning. Co-ops and Dialogues of Civilization provide direct, real-world engagement with industry, creative culture and practice across the globe, partnering with over 100 companies and organizations—recording labels, music publishing companies, media outlets, cultural centers and performing arts organizations. For more information visit:

<https://www.northeastern.edu/admissions/application-information/apply>

Daniel Strong Godfrey
Professor and Chair
Department of Music
College of Arts, Media and Design
351 Ryder Hall
Northeastern University
Boston, MA 02115
d.godfrey@northeastern.edu



ICLASSICAL ACADEMY

WHAT DISTINGUISHES THIS SCHOOL?

Online Classical Music Academy offers more than 550 master classes and courses for violin, cello, piano, conducting, guitar, trumpet, music career and voice. Learn from teachers of different schools of music education; Russian, French, German, Italian and American, compare techniques and apply what serves you best.

LOCATION Rue de Pas de l'Ours 3B
3963 Crans-Montana
SWITZERLAND
iclassical-academy.com/

ADMISSIONS +39 347 331 9474
meira@iclassical-academy.com

FINANCIAL INFORMATION

[Tuition & Fees](#) / [Financial Aid & Scholarships](#)

CAREER / POST-GRADUATION ASSISTANCE

[Career assistance at iClassical Academy](#)

KEY STATISTICS (college level and above)

4500 music students
Music Faculty: 5 full time, 75 adjunct
50 scholarships awarded

AREAS OF STUDY

Arts Leadership • Brass • Composition (Performance)
• Conducting • Media studies (including audio and video production) • Music Business • Music Education • Organ • Piano • Strings • Vocal Arts/Opera

ADDITIONAL PROGRAMS (non-matriculating/prep)

[The Musical Jewels](#)

ONLINE COURSES

[Online courses information](#)
76% to 100% will be available as hybrid or online-only courses

PANDEMIC & SAFETY: SCHOOL POLICIES

✓=Yes ✗=No

Proof of vaccination required?

✗ Students ✗ Faculty ✗ Staff

Proof of a negative COVID-19 test required?

✗ Students ✗ Faculty ✗ Administration & staff

Reduced density being considered in:

✗ On-campus housing ✗ Class and/or ensembles

SOCIAL LINKS



Oberlin Conservatory Celebrating Tradition. Creating the Future.



At Oberlin, students are guided along diverse routes by expert faculty mentors. They are inspired through individualized instruction in studios and classes that launch compelling performances. And they are supported by campus resources that make imaginative projects possible.

This transformative education has launched cutting-edge music-makers including Musical America award winners Robert Spano, Jennifer Koh, Christopher Rouse, Jeremy Denk, and founders/members of ICE, Eighth Blackbird, Pacifica Quartet, and Boston Modern Orchestra Project.

OBERLIN
COLLEGE & CONSERVATORY

conservatory.admissions@oberlin.edu
440-775-8413
oberlin.edu/con

IU JACOBS SCHOOL OF MUSIC

Indiana University

WHAT DISTINGUISHES THIS SCHOOL?

The more than 1,500 students who study at the Jacobs School of Music benefit from the intensity and focus of a conservatory combined with the broad academic offerings of a major university. The breadth and number of performance opportunities are unparalleled in college music study.

LOCATION 1201 East Third Street
Bloomington, IN 47405
UNITED STATES
www.music.indiana.edu

ADMISSIONS 812-855-7998
musicadm@indiana.edu

Audition Requirements [Audition Requirements](#)
All programs in the Jacobs School of Music require an audition or interview, and in some cases, both. Many programs also require a pre-screening. Select your area's page for more information regarding audition/interview and/or prescreen repertoire requirements. Many of our programs require you to submit prescreen recordings and/or materials, due December 1, 2021, and must be uploaded and submitted to your Jacobs School of Music Supplemental Application. Audition weekends for entry into the 2022-23 school year are: January 14-15, February 4-5, March 4-5, 2022 (Some department audition dates vary. Please see your area's audition page for more information.)

FINANCIAL INFORMATION
[Tuition & Fees](#) / [Financial Aid & Scholarships](#)

CAREER / POST-GRADUATION ASSISTANCE
[Career Assistance](#)

In collaboration with the graduate and undergraduate offices, the OECD provides one-on-one career advising, multiple online tools, an alumni mentorship program, departmental career days, mentorship

to student organizations and projects, and digital publications. An undergraduate Certificate in Music Entrepreneurship (15 credits) is offered by the OECD in partnership with the Kelley School of Business.

KEY STATISTICS (college level and above)
1600 music students
Music Faculty: **175** full time, **30** adjunct

AREAS OF STUDY
Brass • Collaborative Piano • Composition (Performance) • Conducting • Early Music • Jazz Studies & Contemporary Media • Media studies (including audio and video production) • Music Business • Music Education • Musicology • Music Therapy • Organ • Piano • Strings • Vocal Arts/Opera • Audio Engineering and Sound Production • Ballet • Chamber and Collaborative Music • Choral Conducting • Music Entrepreneurship

DEGREE PROGRAMS
[Undergraduate Programs](#) / [Graduate Programs](#)

ONLINE COURSES
[Online courses information](#)
Additional plans still under consideration

PANDEMIC & SAFETY: SCHOOL POLICIES
[Policies & Procedures for this school](#)
✓=Yes ✗=No

Proof of vaccination required?
✗ Students ✗ Faculty ✗ Staff

Proof of a negative COVID-19 test required?
✓ Students ✗ Faculty ✗ Administration & staff

Reduced density being considered in:
✗ On-campus housing ✗ Class and/or ensembles

SOCIAL LINKS    

JAM MUSIC LAB PRIVATE UNIVERSITY FOR JAZZ & POPULAR MUSIC VIENNA

WHAT DISTINGUISHES THIS SCHOOL?

We are a pioneering university for jazz & popular music providing BA and MA degrees in a hybrid learning model consisting of online and on-site courses. We focus on our students' talents and creativity, no matter if they strive to be a composer, instrumentalist, singer, songwriter, producer or educator.

LOCATION Mariahilfer Str. 47/1/9
1060 Vienna
AUSTRIA
www.jammusiclab.com

ADMISSIONS +43 1 9466846
office@jammusiclab.com

Audition Requirements [Audition Requirements](#)

FINANCIAL INFORMATION
[Tuition & Fees](#) / [Financial Aid & Scholarships](#)

CAREER / POST-GRADUATION ASSISTANCE
We offer career aid to our students through our own artist agency and through external partnerships with venues, promoters and broadcasters.

KEY STATISTICS (college level and above)
150 music students
Music Faculty: **5** full time, **50** adjunct

AREAS OF STUDY

Brass • Collaborative Piano • Composition (Performance) • Jazz Studies & Contemporary Media • Media studies (including audio and video production) • Music Business • Music Education • Organ • Piano • Strings • Vocal Arts/Opera • Winds & Percussion • Popular Music • Vocal Arts Jazz/Pop

DEGREE PROGRAMS
[Bachelor of Arts in Music](#) / [Bachelor of Arts in Music Education](#)
[Master of Arts in Music](#)
Additional details: Bachelor of Arts in Music; Bachelor of Arts in Music Education; Master of Arts in Music; Master of Arts in Music Education

ONLINE COURSES
[Online courses information](#)
51% to 75% will be available as hybrid or online-only courses

PANDEMIC & SAFETY: SCHOOL POLICIES
[Policies & Procedures for this school](#)
✓=Yes ✗=No

Proof of vaccination required?
✗ Students ✗ Faculty ✗ Staff

Proof of a negative COVID-19 test required?
✓ Students ✓ Faculty ✓ Administration & staff

Reduced density being considered in:
✓ On-campus housing ✓ Class and/or ensembles

SOCIAL LINKS    

THE JUILLIARD SCHOOL

The mission of The Juilliard School is to provide the highest caliber of artistic education for gifted musicians, dancers, and actors from around the world, so that they may achieve their fullest potential as artists, leaders, and global citizens.

WHAT DISTINGUISHES THIS SCHOOL?

Since 1905 Juilliard has educated the world's foremost musicians, then dancers & actors; its Lincoln Center campus is a launching ground for artistic achievement, with an equally world-renowned faculty.

LOCATION 60 Lincoln Center Plaza
New York, NY 10023
UNITED STATES
www.juilliard.edu

ADMISSIONS 212-799-5000 x223
musicadmissions@juilliard.edu

Audition Requirements [Audition Requirements](#)

FINANCIAL INFORMATION

[Tuition & Fees](#) / [Financial Aid & Scholarships](#)

CAREER / POST-GRADUATION ASSISTANCE

[The Alan D. Marks Center for Career Services and Entrepreneurship](#) at Juilliard provides a comprehensive integration of career services programs and entrepreneurial strategies into the ecosystem of the Juilliard community, preparing graduates across all disciplines to be confident professionals at the intersection of creativity, technology, and business. Critical required coursework for entering students, extensive co-curricular programming, professional networking and consultations, and post-graduate grant resources are provided through the Center, as well as advanced elective coursework that has been created and will be continually revised and updated to match the ever-changing landscape.

Juilliard

The office also provides the essential services needed to assist students in developing long-term career plans. These services include: career guidance; self-assessment tools; résumé, curriculum vitae, and website development; career workshops; marketing; graphic image design; project development; fundraising; internship opportunities; and performance opportunities.

KEY STATISTICS (college level and above)

696 music students

Music Faculty: 173 full time, 132 adjunct

AREAS OF STUDY

Brass • Collaborative Piano • Composition (Performance) • Conducting • Early Music • Jazz Studies & Contemporary Media • Organ • Piano • Strings • Vocal Arts/Opera • Winds & Percussion • Dance • Acting • Playwriting

DEGREE PROGRAMS

[Undergraduate Programs](#) / [Graduate Programs](#)

ADDITIONAL PROGRAMS (non-matriculating/prep)

[Cross-Registration Programs at Barnard College or Columbia University](#)
[Preparatory Division](#)

PANDEMIC & SAFETY: SCHOOL POLICIES

[Policies & Procedures for this school](#)

✓=Yes ✗=No

Proof of vaccination required?

✓ Students ✓ Faculty ✓ Staff

Proof of a negative COVID-19 test required?

✗ Students ✗ Faculty ✗ Administration & staff

Reduced density being considered in:

✗ On-campus housing ✗ Class and/or ensembles

SOCIAL LINKS



Juilliard

Transforming passion into artistry

Undergraduate and graduate degrees and diplomas

World-renowned faculty and guest artists

Performance opportunities in New York City and abroad

APPLY BY DECEMBER 1

juilliard.edu

PHOTO: MICHAEL DIVITO

LONGY SCHOOL OF MUSIC

Bard College

Longy is a degree-granting conservatory in Cambridge, MA. We offer a full spectrum of performance, composition, and teaching programs, including a new Online Master of Music in Music Education in addition to the on-campus MM/ME.

WHAT DISTINGUISHES THIS SCHOOL?

The world needs music now more than ever. At Longy, we prepare students to become exceptional musicians who can engage new audiences; teach anyone, anywhere; and use artistry to change lives in communities around the world. Join us and become the musician the world needs you to be.

LOCATION 27 Garden Street
Cambridge, MA, 02138
UNITED STATES
longy.edu

ADMISSIONS 617-876-0956
admissions@longy.edu

Audition Requirements [Audition Requirements](#)

FINANCIAL INFORMATION

[Tuition & Fees](#) / [Financial Aid & Scholarships](#)

CAREER / POST-GRADUATION ASSISTANCE

At Longy, career coaching is a transformational process of self-discovery. Our Longy coaches are expert in asking powerful questions that help you identify values, raise awareness, identify roadblocks, shift lenses, explore options, and organize priorities.

LONGY

School of Music of Bard College

KEY STATISTICS (college level and above)

300 music students
Music Faculty: 0 full time, 127 adjunct
251 scholarships awarded

AREAS OF STUDY

Brass • Collaborative Piano • Composition (Performance) • Early Music • Jazz Studies & Contemporary Media • Music Education • Music Therapy • Organ • Piano • Strings • Vocal Arts/Opera • Winds & Percussion • Guitar • Chamber Music • Jazz & Contemporary Music • Historical Performance • Dalcroze Eurhythmics • Certified Music Practitioner • Theory

DEGREE PROGRAMS

[Undergraduate Programs](#) / [Graduate Programs](#)
Additional details: Master of Music in Music Education Online; Teacher Education Professional Development

ONLINE COURSES

[Online courses information](#)
Additional plans still under consideration

PANDEMIC & SAFETY: SCHOOL POLICIES

[Policies & Procedures for this school](#)
✓=Yes ✗=No

Proof of vaccination required?

✓ Students ✓ Faculty ✓ Staff

Proof of a negative COVID-19 test required?

✗ Students ✗ Faculty ✗ Administration & staff

Reduced density being considered in:

✗ On-campus housing ✓ Class and/or ensembles

SOCIAL LINKS [Twitter](#) [Facebook](#) [YouTube](#) [Instagram](#) [LinkedIn](#)



BECOME THE MUSICIAN THE WORLD NEEDS YOU TO BE

At Longy, we prepare students to become exceptional musicians who can **engage new audiences**; **teach anyone**, anywhere; and use artistry to **change lives** in communities around the world.

Apply now at **Longy.edu**

LONGY
School of Music of Bard College

MANHATTAN SCHOOL OF MUSIC

Manhattan School of Music is deeply committed to excellence in education, performance, and creative activity; to the humanity of the School's environment; and to the cultural enrichment of the larger community. A premier international conservatory, MSM inspires and empowers highly talented individuals to realize their potential.

WHAT DISTINGUISHES THIS SCHOOL?

Manhattan School of Music takes full advantage of New York's abundant learning and performance opportunities, preparing highly talented students for careers as passionate performers and composers and to be imaginative, effective leaders in the arts.

LOCATION 130 Claremont Avenue
New York, NY 10027
UNITED STATES
www.msmnyc.edu

ADMISSIONS 917-493-4436
admission@msmnyc.edu

Audition Requirements [Audition Requirements](#)

FINANCIAL INFORMATION

[Tuition & Fees](#) / [Financial Aid & Scholarships](#)

CAREER / POST-GRADUATION ASSISTANCE

MSM's [Center for Music Entrepreneurship \(CME\)](#): The CME staff provides professional career coaching in a supportive environment. In individual sessions, students can explore their goals and create action plans for success. CME offers graduate- and undergraduate-level courses that provide the tools to help students pursue careers and fulfill their artistic goals. Flexible internship opportunities are made available for elective credits with leading NYC-area cultural institutions and businesses. Setting the Stage series: inspiring entrepreneurial

M Manhattan School of Music

speakers share their expertise and advice in this series of hands-on interactive workshops.

KEY STATISTICS (college level and above)
1000 music students
Music Faculty: 89 full time, **166** adjunct

AREAS OF STUDY

Brass • Collaborative Piano • Composition (Performance) • Conducting • Jazz Studies & Contemporary Media • Music Therapy • Organ • Piano • Strings • Vocal Arts/Opera • Winds & Percussion • Jazz Arts • Musical Theatre (BM only) • Orchestral Performance (MM, PS only) • Classical Contemporary Performance (MM, PS only)

DEGREE PROGRAMS

[Undergraduate Programs](#) / [Graduate Programs](#)
Additional details: Graduate Programs: Master of Music; Professional Studies Certificate; Doctor of Music; Artist Diploma

ADDITIONAL PROGRAMS (non-matriculating/prep)
[Special Programs](#)
[The Global Conservatoire](#)

PANDEMIC & SAFETY: SCHOOL POLICIES

[Policies & Procedures for this school](#)

✓=Yes ✗=No

Proof of vaccination required?

✓ Students ✓ Faculty ✓ Staff

Proof of a negative COVID-19 test required?

✗ Students ✗ Faculty ✗ Administration & staff

Reduced density being considered in:

✗ On-campus housing ✗ Class and/or ensembles

SOCIAL LINKS



M Manhattan
School of Music

MSMNYC.EDU
Office of Admissions and Financial Aid
Manhattan School of Music
130 Claremont Avenue, New York, NY 10027
917-493-4436 admission@msmnyc.edu

it all happens here.

MANNES SCHOOL OF MUSIC

The New School

WHAT DISTINGUISHES THIS SCHOOL?

The curriculum at Mannes breathes new life into traditional conservatory education, offering students rigorous training together with unique opportunities to grow as artists through cross-disciplinary collaboration, entrepreneurial innovation, and social engagement. A Mannes education prepares students to live their best life in the arts and influence society through their work.

LOCATION 55 West 13th Street
New York, NY 10011
UNITED STATES
www.newschool.edu/mannes/

ADMISSIONS 212-580-0210 x4862
performingarts@newschool.edu

Audition Requirements [Audition Requirements](#)

FINANCIAL INFORMATION

[Tuition & Fees](#) / [Financial Aid & Scholarships](#)

CAREER / POST-GRADUATION ASSISTANCE

At Mannes, students receive exceptional preparation for careers in music by engaging in a highly progressive curriculum aimed not only at developing their unique artistic voice but also at exploring how to use that voice to engage with the world around them, in and through the arts. In making the transition from student to citizen artist, students benefit from the mentorship and guidance of world-class faculty and supportive administrative staff. They have the opportunity to participate in partnerships with top tier arts organizations such as the Martha Graham Dance Company, the Orchestra of Saint Luke's, International Contemporary Ensemble, The Museum of Modern Art, The Baltimore Symphony Orchestra, the Buffalo Philharmonic, Glimmerglass

Festival, the Brooklyn Arts Council, and many more. The New School's Career Services office helps students build their professional networks by fostering connections with alumni, faculty, and employers, and offers an online job board, interview and portfolio workshops, networking opportunities, career fairs, internship support, and other resources.

KEY STATISTICS (college level and above)
460 music students
Music Faculty: **12** full time, **238** adjunct

AREAS OF STUDY

Arts Leadership • Brass • Collaborative Piano
• Composition (Performance) • Conducting • Jazz Studies & Contemporary Media • Music Education
• Music Therapy • Organ • Piano • Strings • Vocal Arts/Opera • Winds & Percussion

DEGREE PROGRAMS

[Undergraduate Programs](#) / [Graduate Programs](#)
Additional details: MA Arts Management and Entrepreneurship; Master of Music Performer-Composer

PANDEMIC & SAFETY: SCHOOL POLICIES

[Policies & Procedures for this school](#)

✓=Yes ✗=No

Proof of vaccination required?

✓ Students ✗ Faculty ✗ Staff

Proof of a negative COVID-19 test required?

✓ Students ✓ Faculty ✓ Administration & staff

Reduced density being considered in:

✗ On-campus housing ✗ Class and/or ensembles

SOCIAL LINKS



ROBERT MCDUFFIE CENTER FOR STRINGS

Mercer University

WHAT DISTINGUISHES THIS SCHOOL?

Founded as a special institute within Mercer University's Townsend School of Music, the McDuffie Center for Strings is limited to 26 students: twelve violinists, six violists, six cellists, and two bassists. All accepted students receive a full-tuition scholarship to study with an unparalleled faculty of international performing artists.

LOCATION 1501 Mercer University Drive
Macon, GA 31207
UNITED STATES
mcduffie.mercer.edu

ADMISSIONS 478-301-2886
mcduffiecenter@mercer.edu

Audition Requirements

[Audition Requirements](#)—Two contrasting movements of solo Bach: a concerto movement and an etude/caprice of your choice

FINANCIAL INFORMATION

[Tuition & Fees](#)

CAREER / POST-GRADUATION ASSISTANCE

[Career Assistance](#)

KEY STATISTICS (college level and above)

26 music students
Music Faculty: **3** full time, **11** adjunct
26 scholarships awarded

AREAS OF STUDY

Strings

DEGREE PROGRAMS

[Undergraduate Programs](#) / [Graduate Programs](#)
Additional details: String only: violin, viola, cello and bass; Bachelor of Music with Elective Studies in Business; Bachelor of Music; Artist Diploma (post-baccalaureate only)

PANDEMIC & SAFETY: SCHOOL POLICIES

[Policies & Procedures for this school](#)

✓=Yes ✗=No

Proof of vaccination required?

✗ Students ✗ Faculty ✗ Staff

Proof of a negative COVID-19 test required?

✓ Students ✓ Faculty ✓ Administration & staff

Reduced density being considered in:

✗ On-campus housing ✗ Class and/or ensembles

SOCIAL LINKS



NEW ENGLAND CONSERVATORY

WHAT DISTINGUISHES THIS SCHOOL?

NEC is a premier conservatory that values exploration and collaboration. Students are mentored by a devoted faculty of esteemed artist-teachers and scholars. Alumni fill orchestra chairs, concert halls, jazz clubs, recording studios, and arts management positions worldwide.

LOCATION 290 Huntington Avenue
Boston, MA 02115
UNITED STATES
necmusic.edu/

ADMISSIONS 617-585-1101
admission@necmusic.edu

Audition Requirements [Audition Requirements](#)

FINANCIAL INFORMATION

[Tuition & Fees](#) / [Financial Aid & Scholarships](#)

CAREER / POST-GRADUATION ASSISTANCE

[Entrepreneurial Musicianship](#)—NEC has reinvented how we equip young musicians to thrive amidst the challenges they find after graduation. Our mission has not changed—we educate and nurture exceptionally gifted musicians to perform at the highest levels of accomplishment. But today, performance excellence is the starting point. Musicians must be more than virtuosi; they must be their own businesses.

KEY STATISTICS (college level and above)
750 music students
Music Faculty: 113 full time, 313 adjunct

AREAS OF STUDY

Brass • Collaborative Piano • Composition (Performance) • Conducting • Early Music • Jazz Studies & Contemporary Media • Musicology • Music Therapy • Organ • Piano • Strings • Vocal Arts/Opera • Contemporary Improvisation • Piano Trio Program • String Quartet Program

DEGREE PROGRAMS

[Undergraduate Programs](#) / [Graduate Programs](#)

PANDEMIC & SAFETY: SCHOOL POLICIES

[Policies & Procedures for this school](#)

✓=Yes ✗=No

Proof of vaccination required?

✓ Students ✓ Faculty ✓ Staff

Proof of a negative COVID-19 test required?

✗ Students ✗ Faculty ✗ Administration & staff

Reduced density being considered in:

✗ On-campus housing ✓ Class and/or ensembles

SOCIAL LINKS



ROYAL COLLEGE OF MUSIC



ROYAL
COLLEGE
OF MUSIC
London



Top institution for performing arts in the UK for six consecutive years and top in Europe*

More than 50% of current students have benefitted from **financial support**

A variety of **performance opportunities** with distinguished visiting artists

A global conservatoire, with staff and students from all over the world

Located opposite the **Royal Albert Hall** in London

Find out more about studying at the Royal College of Music at www.rcm.ac.uk/study

*QS World University Rankings 2016–2021



NEW WORLD SYMPHONY, AMERICA'S ORCHESTRAL ACADEMY

WHAT DISTINGUISHES THIS SCHOOL?

A laboratory for the way music is taught, presented, and experienced, the New World Symphony consists of 87 musicians who are granted fellowships lasting up to three years. The fellowship offers in-depth exposure to traditional & modern repertoire, professional development training, and personalized experiences working with leading guest faculty.

LOCATION New World Center
500 17th Street
Miami Beach, FL 33139
UNITED STATES
www.nws.edu

ADMISSIONS 305-428-6713
admissions@nws.edu

Audition Requirements [Audition Requirements](#)

FINANCIAL INFORMATION

[Tuition & Fees](#) / [Financial Aid & Scholarships](#)

CAREER / POST-GRADUATION ASSISTANCE

An intensive four-day audition preparation seminar, involving visiting coaches from major orchestras, is held each year and consists of a series of audition training exercises and private audition coaching, as well as a panel discussion of the audition process from the perspective of the orchestra audition committee. In addition, Fellows organize monthly mock auditions intended to replicate the conditions of professional orchestra auditions, with the occasional participation of guest conductors and coaches. To assist Fellows in achieving optimal performance, NWS presents an annual series of groundbreaking workshops with psychologist Dr. Noa Kageyama.

KEY STATISTICS (college level and above)

87 music students
Music Faculty: 5 full time, 100 adjunct
87 scholarships awarded

AREAS OF STUDY

Arts Leadership • Brass • Composition (Performance)
• Conducting • Media studies (including audio and video production) • Musicology • Music Therapy
• Piano • Strings

Additional details: NWS is a non-degree granting member of the National Association of Schools of Music.

ONLINE COURSES

[Online courses information](#)

Percent of hybrid or online-only courses still under consideration

PANDEMIC & SAFETY: SCHOOL POLICIES

✓=Yes ✗=No

Proof of vaccination required?

✗ Students ✗ Faculty ✗ Staff

Proof of a negative COVID-19 test required?

✗ Students ✗ Faculty ✗ Administration & staff

Reduced density being considered in:

✗ On-campus housing ✗ Class and/or ensembles

SOCIAL LINKS



NORTHEASTERN UNIVERSITY DEPARTMENT OF MUSIC

WHAT DISTINGUISHES THIS SCHOOL?

The Department of Music at Northeastern is devoted to offering graduate and undergraduate majors, combined majors and minors, a cross-disciplinary approach to research and practice in music, underscored by real-world experiential learning and cutting-edge technology.

LOCATION 351 Ryder Hall
Northeastern University
Boston, MA 02115
UNITED STATES
camd.northeastern.edu/music

ADMISSIONS 617-373-2200
admissions@northeastern.edu

FINANCIAL INFORMATION

[Tuition & Fees](#) / [Financial Aid & Scholarships](#)

CAREER / POST-GRADUATION ASSISTANCE

[Career Assistance](#)

KEY STATISTICS (college level and above)

400 music students
Music Faculty: 19 full time, 10 adjunct

AREAS OF STUDY

Arts Leadership • Media studies (including audio and video production) • Music Education

DEGREE PROGRAMS

[Undergraduate Programs](#) / [Graduate Programs](#)
Additional details: Music with Concentration in Music Industry, BS; Music with Concentration in Music Technology, BS; Music, BA; Computer Science and Music with Concentration in Music Technology, BS; Electrical Engineering and Music with Concentration in Music Technology, BS; Game Design and Music with Concentration in Music Technology, BS; Music and Communication Studies with Concentration in Music Industry, BS; Music and Psychology, BS; Physics and Music with Concentration in Music Technology, BS; Arts Administration and Cultural Entrepreneurship, MS; Creative Practice Leadership, MS; Music Industry Leadership, MS; Arts Administration, Graduate Certificate; Cultural Entrepreneurship, Graduate Certificate

ONLINE COURSES

[Online courses information](#)

Additional plans under consideration

PANDEMIC & SAFETY: SCHOOL POLICIES

[Policies & Procedures for this school](#)

✓=Yes ✗=No

Proof of vaccination required?

✓ Students ✓ Faculty ✓ Staff

Proof of a negative COVID-19 test required?

✓ Students ✓ Faculty ✓ Administration & staff

Reduced density being considered in:

✗ On-campus housing ✓ Class and/or ensembles

SOCIAL LINKS



OBERLIN CONSERVATORY OF MUSIC

Oberlin College

WHAT DISTINGUISHES THIS SCHOOL?

Oberlin Conservatory focuses on undergraduate pre-professional musicians in classical, contemporary, jazz performance; composition; and electronic music. Two graduate programs—Piano Technology and Recording Arts & Production—lead to Artist Diplomas. The Conservatory is embedded within the premier liberal arts environment of Oberlin College and is renowned for the Double Degree Program.

LOCATION 77 West College Street
Oberlin, OH 44074
UNITED STATES
www.oberlin.edu/conservatory

ADMISSIONS
440-775-8413
Conservatory.Admissions@oberlin.edu

Audition Requirements
[Audition requirements vary according to discipline](#)

FINANCIAL INFORMATION
[Tuition & Fees](#) / [Financial Aid & Scholarships](#)

CAREER / POST-GRADUATION ASSISTANCE
Oberlin College's [Career Center](#) and Oberlin Conservatory's [Professional Development Office](#) help students and recent alumni in the College of Arts and Sciences and the Conservatory of Music identify and achieve meaningful career objectives that build upon their Oberlin education and experiences. We offer group and individual counseling as well as experiential opportunities.

KEY STATISTICS (college level and above)
560 music students
Music Faculty: **80** full time, **25** adjunct
550 scholarships awarded

AREAS OF STUDY
Brass • Collaborative Piano • Composition (Performance) • Conducting • Early Music • Jazz Studies & Contemporary Media • Media studies (including audio and video production) • Musicology • Organ • Piano • Strings • Vocal Arts/Opera • Winds & Percussion • Vocal Accompanying • Piano Technology

DEGREE PROGRAMS
[Undergraduate Programs](#) / [Graduate Programs](#)

ADDITIONAL PROGRAMS (non-matriculating/prep)
[Summer Programs](#)

ONLINE COURSES
[Online courses information](#)
Percent of hybrid or online-only courses still under consideration

PANDEMIC & SAFETY: SCHOOL POLICIES
[Policies & Procedures for this school](#)
✓=Yes ✗=No

Proof of vaccination required?
✗ Students ✗ Faculty ✗ Staff

Proof of a negative COVID-19 test required?
✗ Students ✗ Faculty ✗ Administration & staff

Reduced density being considered in:
✗ On-campus housing ✗ Class and/or ensembles

SOCIAL LINKS     

PACIFIC REGION INTERNATIONAL SUMMER ASSOCIATION (PRISMA) FESTIVAL & ACADEMY

WHAT DISTINGUISHES THIS SCHOOL?

PRISMA prides itself on its focus not only on the technical aspects of music education but on the care it takes to ensure a positive experience—one that brings people together through a shared love of music. It has an exceptionally supportive environment for learning and performing together.

LOCATION c/o Robbins & Co.
4313 Alberta Avenue #9
Powell River, BC V8A 5G7
CANADA
www.prismafestival.com

ADMISSIONS 855-577-4762
admissions@prismafestival.com

Audition Requirements [Audition Requirements](#)

FINANCIAL INFORMATION
[Tuition & Fees](#) / [Financial Aid & Scholarships](#)

KEY STATISTICS (college level and above)
80 music students
Music Faculty: **1** full time, **23** adjunct
40 scholarships awarded

AREAS OF STUDY
Brass • Conducting • Piano • Strings • Winds & Percussion • Applied Music (Performance) • Audition Training • Orchestral Conducting

ADDITIONAL PROGRAMS (non-matriculating/prep)
[Concerts, Orchestra Rehearsals, Concerto Competition, Audition Training, Masterclasses & Private Lessons, and more](#)

PANDEMIC & SAFETY: SCHOOL POLICIES
✓=Yes ✗=No

Proof of vaccination required?
✓ Students ✓ Faculty ✓ Staff

Proof of a negative COVID-19 test required?
✓ Students ✓ Faculty ✓ Administration & staff

Reduced density being considered in:
✓ On-campus housing ✓ Class and/or ensembles

SOCIAL LINKS    

PEABODY CONSERVATORY

Johns Hopkins University

Through comprehensive excellent education, the Peabody Institute nurtures talent and creativity; provides aspiring musicians with the skills to sustain professional careers; fosters lifelong involvement in music and dance; and prepares students in artistic performance at the highest level, providing inspiration and enlightenment to regional, national, and international communities. Through Peabody's Breakthrough Curriculum you will learn excellence in your craft, performance flexibility, leadership as a citizen artist, and communication, marketing, and practical skills.

WHAT DISTINGUISHES THIS SCHOOL?

At the Peabody Conservatory, we are a community of artists—cultivating excellence, embracing new ideas, and committed to the future of music in our world.

LOCATION 1 East Mount Vernon Place
Baltimore, MD 21202
UNITED STATES
www.peabody.jhu.edu

ADMISSIONS 667-208-6600
admissions@peabody.jhu.edu

Audition Requirements [Audition Requirements](#)

FINANCIAL INFORMATION

[Tuition & Fees](#) / [Financial Aid & Scholarships](#)

CAREER / POST-GRADUATION ASSISTANCE

[LAUNCHPad](#), Peabody's comprehensive career services office, helps students and recent alumni forge successful careers. We're here to help pinpoint artistic and professional objectives, build career skills, identify opportunities, prepare job applications, launch entrepreneurial ventures, develop websites, raise funds, organize concert tours, and much more.



KEY STATISTICS (college level and above)
757 music students
Music Faculty: 75 full time, 100 adjunct
580 scholarships awarded

AREAS OF STUDY

Brass • Composition (Performance) • Conducting
• Early Music • Jazz Studies & Contemporary
Media • Media studies (including audio and video
production) • Music Education • Musicology
• Organ • Piano • Strings • Vocal Arts/Opera • Winds &
Percussion • Acoustics • Chamber Music • Computer
Music • Dance • Guitar • Music for New Media
• Pedagogy • Recording Arts and Sciences • Vocal
Accompanying

DEGREE PROGRAMS

[Undergraduate Programs](#) / [Graduate Programs](#)

ADDITIONAL PROGRAMS

(non-matriculating/prep)
[Low-Residency Master of Music in Composition](#)
[Low-Residency Master of Music in Computer Music](#)
[Low-Residency Master of Music in Guitar](#)

ONLINE COURSES

[Online courses information](#)
Up to 25% will be available as hybrid or online-only
courses

PANDEMIC & SAFETY: SCHOOL POLICIES

[Policies & Procedures for this school](#)

Proof of vaccination required?

✓ Students ✓ Faculty Staff

Proof of a negative COVID-19 test required?

✗ Students ✗ Faculty ✗ Administration & staff

Reduced density being considered in:

✗ On-campus housing ✗ Class and/or ensembles

SOCIAL LINKS    



Refine your artistry, create opportunities, and lead the way in a changing world.

NEW Complete your MM degree in 13 months with the Peabody Conservatory's low-residency program, available in **Composition, Computer Music, and Guitar**.

Learn more:
peabody.jhu.edu/LowResMM



peabody.jhu.edu

667-208-6600

PECK SCHOOL OF THE ARTS

University of Wisconsin-Milwaukee

WHAT DISTINGUISHES THIS SCHOOL?

Music at UW-Milwaukee offers comprehensive undergraduate and graduate education and is the largest professional degree-granting music department in the UW System. Our renowned artist faculty and alumni perform with the Milwaukee Symphony Orchestra, the Lyric Opera of Chicago, the Florentine Opera, Present Music, and more.

LOCATION UWM Department of Music
PO Box 413
Milwaukee WI 53201
uwm.edu/arts

ADMISSIONS 414-229-4763
music-info@uwm.edu

FINANCIAL INFORMATION

[Tuition & Fees](#)

CAREER / POST-GRADUATION ASSISTANCE

UW-Milwaukee offers a comprehensive Career Planning and Resource Center.

KEY STATISTICS (college level and above)

300 music students

Music Faculty: 28 full time, 29 adjunct

AREAS OF STUDY

Brass • Collaborative Piano • Composition (Performance) • Conducting • Music Business • Music Education • Musicology • Organ • Piano • Strings • Vocal Arts/Opera

DEGREE PROGRAMS

[Undergraduate Programs](#) / [Graduate Programs](#)

ONLINE COURSES

[Online courses information](#)

Up to 25% will be available as hybrid or online-only courses

PANDEMIC & SAFETY: SCHOOL POLICIES

[Policies & Procedures for this school](#)

✓=Yes ✗=No

Proof of vaccination required?

✗ Students ✗ Faculty ✗ Staff

Proof of a negative COVID-19 test required?

✗ Students ✗ Faculty ✗ Administration & staff

Reduced density being considered in:

✗ On-campus housing ✗ Class and/or ensembles

SOCIAL LINKS



CHAPMAN UNIVERSITY:

Come here for **world-class training** in **state-of-the-art facilities**.

Come here to **hone your craft** and turn your **passion** into **profession**.

- Specialists in undergraduate education for musicians
- Internationally renowned faculty who know your name
- Exceptional performance opportunities

Talent awards, academic scholarships, and financial aid assistance available.

APPLY AND AUDITION!

Visit our website for upcoming dates:

CHAPMAN.EDU/MUSIC
or call (714) 997-6871



ROYAL COLLEGE OF MUSIC

WHAT DISTINGUISHES THIS SCHOOL?

The Royal College of Music is one of the world's greatest conservatoires, ranked the top institution for performing arts in the U.K. for six consecutive years (QS World University Rankings 2016–21). We have nurtured exceptional musical talent for more than 135 years and welcome students from all over the globe.

LOCATION Prince Consort Road
London SW7 2BS
UNITED KINGDOM
www.rcm.ac.uk

ADMISSIONS +44 (0) 20 7591 4300
admissions@rcm.ac.uk

Audition Requirements
[Audition requirements are set by each faculty](#)

FINANCIAL INFORMATION
[Tuition & Fees](#) / [Financial Aid & Scholarships](#)

CAREER / POST-GRADUATION ASSISTANCE
The RCM is a world leader in career development for musicians. Our dedicated [Creative Careers Centre](#) will guide you through a range of opportunities that mirror the professional world. You can use these services from day one of your course to develop an outstanding CV and wealth of experience that will help shape your future career; the Creative Careers Centre provides services to RCM alumni for five years after graduation.

KEY STATISTICS (college level and above)
900 music students
Music Faculty: **45** full time, **300** adjunct

AREAS OF STUDY
Brass • Collaborative Piano • Composition (Performance) • Conducting • Early Music • Music Education • Musicology • Organ • Piano • Strings • Vocal Arts/Opera • Winds & Percussion • Composition for Screen

DEGREE PROGRAMS
[Undergraduate Programs](#) / [Graduate Programs](#)

PANDEMIC & SAFETY: SCHOOL POLICIES
[Policies & Procedures for this school](#)
✓=Yes ✗=No

Proof of vaccination required?
✗ Students ✗ Faculty ✗ Staff

Proof of a negative COVID-19 test required?
✗ Students ✗ Faculty ✗ Administration & staff

Reduced density being considered in:
✗ On-campus housing ✗ Class and/or ensembles

SOCIAL LINKS    

SAN FRANCISCO CONSERVATORY OF MUSIC

WHAT DISTINGUISHES THIS SCHOOL?

With its new Bowes Center, alliance with Opus 3 Artists, faculty that includes nearly 30 members of the San Francisco Symphony, and partnerships with the Bay Area's major performing arts institutions and technology companies, SFCM provides students with unparalleled opportunities to study in the heart of S.F.'s Civic Center.

LOCATION 50 Oak Street
San Francisco, CA 94102
UNITED STATES
sfc.edu/

ADMISSIONS 800-899-SFCM
apply@sfc.edu

Audition Requirements [Audition Requirements](#)

FINANCIAL INFORMATION
[Tuition & Fees](#) / [Financial Aid & Scholarships](#)

CAREER / POST-GRADUATION ASSISTANCE
The [Professional Development and Engagement Center \(PDEC\)](#) offers students gig opportunities, internships, a grant service, access to employment listings, and a host of courses focused on marketing, finance, teaching, and technology.

KEY STATISTICS (college level and above)
450 music students
Music Faculty: **21** full time, **48** adjunct

AREAS OF STUDY

Brass • Collaborative Piano • Composition (Performance) • Conducting • Early Music • Jazz Studies & Contemporary Media • Music Education • Music Therapy • Organ • Piano • Strings • Vocal Arts/Opera • Chamber music • Classical Guitar

DEGREE PROGRAMS
[Undergraduate Programs](#) / [Graduate Programs](#)

ADDITIONAL PROGRAMS (non-matriculating/prep)
[Rubin Institute for Music Criticism](#)
[Center for Innovative Leadership](#)
[Pre-College](#)

ONLINE COURSES
[Online courses information](#)
Percent of hybrid or online-only courses still under consideration

PANDEMIC & SAFETY: SCHOOL POLICIES
[Policies & Procedures for this school](#)
✓=Yes ✗=No

Proof of vaccination required?
✓ Students ✓ Faculty ✓ Staff

Proof of a negative COVID-19 test required?
✓ Students ✓ Faculty ✓ Administration & staff

Reduced density being considered in:
✓ On-campus housing ✗ Class and/or ensembles

SOCIAL LINKS     

SHANGHAI ORCHESTRA ACADEMY (SOA)

Shanghai Conservatory of Music

WHAT DISTINGUISHES THIS SCHOOL?

The Shanghai Orchestra Academy (SOA) is the result of a partnership among the Shanghai Symphony Orchestra, New York Philharmonic, and Shanghai Conservatory of Music. The SOA provides rigorous training at the Master's Degree level for talented instrumentalists.

LOCATION 1380 Middle Fuxing Road
Shanghai
CHINA
soa.shsymphony.com

ADMISSIONS

+(86) 21-54667821
admissions@orchestraacademy.com

Audition Requirements [Audition Requirements](#)

FINANCIAL INFORMATION

[Tuition & Fees](#) / [Financial Aid & Scholarships](#)

CAREER / POST-GRADUATION ASSISTANCE

An integral part of the SOA curriculum is practical training with professional orchestras. Students gain first-hand experience learning from and playing with New York Philharmonic and the Shanghai Symphony Orchestra. Other international partners have since offered practical training opportunities to SOA students, including NDR Elbphilharmonie Orchestra, Sydney Symphony, Singapore Symphony, and Hong Kong Philharmonic.

KEY STATISTICS (college level and above)

40 music students
Music Faculty: 22 full time, 40 adjunct

AREAS OF STUDY

Brass • Strings • Winds & Percussion

DEGREE PROGRAMS

[Graduate Programs](#)

ONLINE COURSES

[Online courses information](#)

Up to 25% will be available as hybrid or online-only courses

PANDEMIC & SAFETY: SCHOOL POLICIES

✓=Yes ✗=No

Proof of vaccination required?

✗ Students ✗ Faculty ✗ Staff

Proof of a negative COVID-19 test required?

✗ Students ✗ Faculty ✗ Administration & staff

Reduced density being considered in:

✗ On-campus housing ✗ Class and/or ensembles

SOCIAL LINKS



FREDONIA | APPLY TODAY



CHOOSE THE POWER OF FREDONIA

- **100% job placement** for Fredonia Music Ed grads
- Fredonia's Chamber Choir will perform at **ACDA Conference** in February 2022
- Home of the **Claudette Sorel Piano Competition & Fellows Program**
- Fredonia faculty & alumni received **11 GRAMMY nominations & 5 wins** this year
- Fredonia will present **two world premieres** in Spring 2022

fredonia.edu/music



SHENANDOAH CONSERVATORY

Shenandoah University

WHAT DISTINGUISHES THIS SCHOOL?

Shenandoah Conservatory offers rigorous professional training in Music, Theatre, and Dance, with extensive performance opportunities, collaborative and interdisciplinary experiences, and close mentoring relationships with exceptionally accomplished faculty. Engagements with internationally acclaimed guest artists representing the highest levels of creative, pedagogical, and scholarly excellence are frequent, and international performance opportunities abound.

LOCATION 1460 University Drive
Winchester, VA 22601
UNITED STATES
www.su.edu/conservatory

ADMISSIONS 540-665-4581
admit@su.edu

Audition Requirements [Audition Requirements](#)

FINANCIAL INFORMATION
[Tuition & Fees](#) / [Financial Aid & Scholarships](#)

CAREER / POST-GRADUATION ASSISTANCE
Shenandoah University's [Services Office](#) provides a comprehensive range of services and resources to support career exploration and professional growth of SU students. Career Services works with students in all aspects, from choosing a major to career changes. Services offered include career exploration; experiential learning through internships; volunteer, summer, and part-time opportunities; résumé building; interview skills workshops; graduate school search assistance; and job search assistance.

KEY STATISTICS (college level and above)
515 music students
Music Faculty: 44 full time, **38** adjunct

AREAS OF STUDY

Arts Leadership • Brass • Collaborative Piano
• Composition (Performance) • Conducting • Jazz Studies & Contemporary Media • Media studies (including audio and video production) • Music Business • Music Education • Music Therapy • Piano • Strings • Vocal Arts/Opera • Winds & Percussion • Vocal Pedagogy—Classical • Vocal Pedagogy—Contemporary Commercial Music • Dance • Acting • Musical Theatre • Musical Theatre Accompanying • Theatre Design & Production

DEGREE PROGRAMS
[Undergraduate Programs](#) / [Graduate Programs](#)

ADDITIONAL PROGRAMS (non-matriculating/prep)
[Ensembles](#)
[ShenCoLAB](#)
[Global Citizenship Project](#)

ONLINE COURSES
[Online courses information](#)
Up to 25% will be available as hybrid or online-only courses

PANDEMIC & SAFETY: SCHOOL POLICIES
[Policies & Procedures for this school](#)

✓=Yes ✗=No

Proof of vaccination required?
✓ Students ✗ Faculty ✗ Staff

Proof of a negative COVID-19 test required?
✓ Students ✗ Faculty ✗ Administration & staff

Reduced density being considered in:
✗ On-campus housing ✗ Class and/or ensembles

SOCIAL LINKS    

THE SHEPHERD SCHOOL OF MUSIC

Rice University

WHAT DISTINGUISHES THIS SCHOOL?

The Shepherd School of Music provides a dedicated faculty of artist-teachers, extraordinary performance opportunities, beautiful facilities, and an unparalleled education at one of America's premiere universities.

LOCATION 6100 Main Street, entrance 18
Houston, TX 77005
UNITED STATES
music.rice.edu

ADMISSIONS 713-348-4854
musi@rice.edu

Audition Requirements
[Undergraduate](#) / [Graduate](#)

FINANCIAL INFORMATION
[Tuition & Fees](#) / [Financial Aid & Scholarships](#)

CAREER / POST-GRADUATION ASSISTANCE
To ensure that our students are fully prepared to meet the demands of the profession, we have created an instructional area entitled Music Career and Skills Enhancement. Specific courses are designed to complement the Shepherd School's superb musical and academic training to help students transition to professional life. Additionally, Rice University's Center for Career Development supports alumni through career counseling and access to career resources.

KEY STATISTICS (college level and above)
266 music students
Music Faculty: 46 full time, **0** adjunct

AREAS OF STUDY
Brass • Collaborative Piano • Composition (Performance) • Conducting • Musicology • Organ • Piano • Strings • Vocal Arts/Opera • Winds & Percussion • Music Theory

DEGREE PROGRAMS
[Undergraduate Programs](#) / [Graduate Programs](#)

PANDEMIC & SAFETY: SCHOOL POLICIES
[Policies & Procedures for this school](#)

Proof of vaccination required?
✗ Students ✗ Faculty ✗ Staff

Proof of a negative COVID-19 test required?
✓ Students ✓ Faculty Administration & staff

Reduced density being considered in:
✗ On-campus housing ✗ Class and/or ensembles

SOCIAL LINKS   

STAUFFER CENTER FOR STRINGS

WHAT DISTINGUISHES THIS SCHOOL?

The Stauffer Center for Strings is the first international music center for higher education, research, composition, production, management, and innovation, entirely dedicated to stringed instruments.

LOCATION Palazzo Stauffer, via S. Martino n°6
26100 Cremona
ITALY
www.stauffer.org/en/

ADMISSIONS +39 0372 410322
accademia@stauffer.org

FINANCIAL INFORMATION

[Tuition & Fees](#)

KEY STATISTICS (college level and above)

100 music students

Music Faculty: 6 full time, 9 adjunct

AREAS OF STUDY

Strings

Additional details: Stauffer Center for Strings does not offer degrees but high specialization courses for string instruments.

ADDITIONAL PROGRAMS (non-matriculating/prep)

[Special Programs](#)

[Stauffer Labs](#)

PANDEMIC & SAFETY: SCHOOL POLICIES

✓=Yes ✗=No

Proof of vaccination required?

✗ Students ✗ Faculty ✓ Staff

Proof of a negative COVID-19 test required?

✓ Students ✓ Faculty ✗ Administration & staff

Reduced density being considered in:

✗ On-campus housing ✓ Class and/or ensembles

SOCIAL LINKS



THE ORCHESTRA NOW

Bard College

WHAT DISTINGUISHES THIS SCHOOL?

Pre-professional orchestra that combines performance with rigorous study of the humanities; three-year Master's Degree or two-year Advanced Certificate; full-tuition fellowship and bi-weekly stipend; world-renowned guest conductors; regular performances at Carnegie Hall, Lincoln Center, and The Metropolitan Museum of Art.

LOCATION 30 Campus Road
Annandale-on-Hudson, NY 12504
UNITED STATES
<https://www.bard.edu/theorchnow>

ADMISSIONS 845-752-2422
orchnow@bard.edu

Audition Requirements [Audition Requirements](#)

FINANCIAL INFORMATION

[Tuition & Fees](#)

CAREER / POST-GRADUATION ASSISTANCE

Audition Prep class; Professional Development seminars

KEY STATISTICS (college level and above)

74 music students

Music Faculty: 6 full time, 1 adjunct
Scholarship details: All students receive a full-tuition fellowship and bi-weekly stipend.

DEGREE PROGRAMS

[Graduate programs only:](#) Master of Music in Curatorial, Critical, and Performance Studies; Advanced Certificate in Orchestral Studies

PANDEMIC & SAFETY: SCHOOL POLICIES

✓=Yes ✗=No

Proof of vaccination required?

✓ Students ✓ Faculty ✓ Staff

Proof of a negative COVID-19 test required?

✗ Students ✗ Faculty ✗ Administration & staff

Reduced density being considered in:

✗ On-campus housing ✗ Class and/or ensembles

SOCIAL LINKS



THE TIANJIN JUILLIARD SCHOOL

The Juilliard School

Juilliard has been committed for more than 100 years to providing the highest caliber of artistic education to musicians from around the world, so they may achieve their fullest potential as artists, leaders, and global citizens. The Tianjin Juilliard School's mission is to educate new generations of musicians who can take the educational values and experiences they will acquire and bring them to the artistic life of China, East Asia, and the world. We strive to develop complete musicians, and happy and productive young adults who will become leaders in their respective fields in the time ahead.

WHAT DISTINGUISHES THIS SCHOOL?

The Tianjin Juilliard School uniquely focuses on collaborative musicianship, emphasizing a commitment to ensemble playing of the highest artistic level. Our programs reflect the best of educational standards, preparing students for a lifetime of creative expression, of engagement and growth as an individual and as a musician.

LOCATION 2946 Xinhua Road
Binhai New Area
Tianjin 300450
CHINA
www.tianjinjuilliard.edu.cn

ADMISSIONS 212-299-5000 x7642
admissions@tianjinjuilliard.edu.cn

Audition Requirements [Audition Requirements](#)

Tianjin Juilliard 天津茱莉亚学院

FINANCIAL INFORMATION

[Tuition & Fees](#) / [Financial Aid & Scholarships](#)

KEY STATISTICS (college level and above)

70 music students

Music Faculty: 24 full time, 0 adjunct

AREAS OF STUDY

Brass • Collaborative Piano • Piano • Strings • Winds & Percussion

DEGREE PROGRAMS

[Graduate Programs](#)

Additional details: M.M. Degree in Orchestral Studies, Chamber Music, and Collaborative Piano

ADDITIONAL PROGRAMS (non-matriculating/prep)

[Pre-College Program](#)

PANDEMIC & SAFETY: SCHOOL POLICIES

[Policies & Procedures for this school](#)

✓=Yes ✗=No

Proof of vaccination required?

✗ Students ✗ Faculty ✗ Staff

Proof of a negative COVID-19 test required?

✗ Students ✗ Faculty ✗ Administration & staff

Reduced density being considered in:

✗ On-campus housing ✗ Class and/or ensembles

SOCIAL LINKS



Tianjin Juilliard
天津茱莉亚学院

Be a part of Juilliard's new chapter

At Juilliard's landmark campus in China, you shape the future of the performing arts

Master of Music degrees in Orchestral Studies, Chamber Music, or Collaborative Piano

Unparalleled performance opportunities

Robust scholarship and professional support

APPLY BY DECEMBER 15

tianjinjuilliard.edu.cn

Contact Admissions



Photo by Shengyi Visual

UCLA HERB ALPERT SCHOOL OF MUSIC

University of California, Los Angeles

WHAT DISTINGUISHES THIS SCHOOL?

The UCLA Herb Alpert School of Music is at the nexus of performance, scholarship, and innovation. Offering programs in Ethnomusicology, Music, Musicology, Music Industry, and Global Jazz Studies, we balance cutting-edge scholarship with performance mastery and composition. Students are encouraged to explore music in all its contemporary and historical diversity.

LOCATION 445 Charles E Young Drive East
2520 Schoenberg Music Building
Los Angeles, CA 90095
UNITED STATES
www.schoolofmusic.ucla.edu/

ADMISSIONS
310-825-6457
admissions@schoolofmusic.ucla.edu

Audition Requirements
[Undergraduate audition requirements](#) / [Graduate audition requirements](#)

FINANCIAL INFORMATION
[Tuition & Fees](#) / [Financial Aid & Scholarships](#)

CAREER / POST-GRADUATION ASSISTANCE
The [UCLA Career Center](#) is one of the largest and most comprehensive career centers in the nation. It offers a wide range of services that help students explore their professional interests; provide them with the knowledge, skills, resources, and experience necessary to pursue professional goals with confidence and self-assurance; and facilitate connections with employers, alumni, and graduate-school representatives. The Career Center, in collaboration with the School of Music faculty and staff, meets the unique needs of our students by

providing programs and counseling services specific to careers in the arts.

KEY STATISTICS (college level and above)
590 music students
Music Faculty: 45 full time, 24 adjunct
275 scholarships awarded

AREAS OF STUDY
Brass • Collaborative Piano • Composition (Performance) • Conducting • Early Music • Jazz Studies & Contemporary Media • Media studies (including audio and video production) • Music Business • Music Education • Musicology • Music Therapy • Organ • Piano • Strings • Vocal Arts/Opera • Winds & Percussion • Ethnomusicology Music History & Industry

DEGREE PROGRAMS
[Undergraduate Programs](#) / [Graduate Programs](#)

ONLINE COURSES
[Online courses information](#)
26% to 50% will be available as hybrid or online-only courses

PANDEMIC & SAFETY: SCHOOL POLICIES
[Policies & Procedures for this school](#)
✓=Yes ✗=No

Proof of vaccination required?
✓ Students ✓ Faculty ✓ Staff

Proof of a negative COVID-19 test required?
✗ Students ✗ Faculty ✗ Administration & staff

Reduced density being considered in:
✗ On-campus housing ✗ Class and/or ensembles

SOCIAL LINKS     



 **Berliner Philharmoniker** 

The Digital Concert Hall of the Berliner Philharmoniker

Experience classical music at its finest – anywhere, anytime!
Regular live broadcasts, over 650 archive concerts from six decades, numerous interviews, documentaries, playlists and films

For students and music teachers
We are offering an exclusive 30% discount on our 12-month ticket.
More information at digitalconcerthall.com/access

Digital Concert Hall for Institutions
Open up the world of classical music to your students – with access via your library.

Streaming Partner of the Digital Concert Hall



More information at digitalconcerthall.com/institutions

UNIVERSITY OF CINCINNATI COLLEGE- CONSERVATORY OF MUSIC (CCM)

Nationally ranked and internationally renowned, the University of Cincinnati College-Conservatory of Music (CCM) is a preeminent institution for the performing and media arts.

WHAT DISTINGUISHES THIS SCHOOL?

CCM provides life-changing experiences within a highly creative and multidisciplinary artistic environment.

LOCATION PO Box 210003
290 CCM Boulevard
Cincinnati, OH 45221-0003
UNITED STATES
ccm.uc.edu

ADMISSIONS 513-556-9479
ccmadmis@uc.edu

Audition Requirements [Audition Requirements](#)
Auditions and interviews will be held in January and February. All CCM programs require the submission of pre-screening materials to be considered for admission by faculty; as such, not all applicants will be invited to audition or interview.

FINANCIAL INFORMATION
[Tuition & Fees](#) / [Financial Aid & Scholarships](#)

CAREER / POST-GRADUATION ASSISTANCE
Professional development and entrepreneurial acumen are an important part of the CCM experience. Faculty mentorship along with the Managing Professional Performance Careers course provide a foundation for transitioning to life after graduation.



CCM is also home to the Bravos Without Barriers Diversity Fellowship Program, hosted in partnership with the Cincinnati Symphony Orchestra.

KEY STATISTICS (college level and above)
968 music students
Music Faculty: 77 full time, 54 adjunct
872 scholarships awarded

AREAS OF STUDY

Arts Leadership • Brass • Collaborative Piano
• Composition (Performance) • Conducting • Jazz Studies & Contemporary Media • Music Education
• Musicology • Organ • Piano • Strings • Vocal Arts/Opera • Winds & Percussion

DEGREE PROGRAMS

[Undergraduate Programs](#) / [Graduate Programs](#)

ADDITIONAL PROGRAMS (non-matriculating/prep)
[Arts for All](#)

ONLINE COURSES

[Online courses information](#)
Up to 25% will be available as hybrid or online-only courses

PANDEMIC & SAFETY: SCHOOL POLICIES

[Policies & Procedures for this school](#)
✓=Yes ✗=No

Proof of vaccination required?
✗ Students ✗ Faculty ✗ Staff

Proof of a negative COVID-19 test required?
✗ Students ✗ Faculty ✗ Administration & staff

Reduced density being considered in:
✗ On-campus housing ✗ Class and/or ensembles

SOCIAL LINKS     



CCM students Jordan Curry and Magdiell Antequera perform with the Cincinnati Symphony Orchestra. The CSO/CCM Diversity Fellowship and Opera Fusion: New Works are made possible by generous support from The Andrew W. Mellon Foundation.

WELCOME TO YOUR NEXT STAGE.

Tomorrow's arts leaders and luminaries get their start at UC's nationally ranked and internationally renowned College-Conservatory of Music.

Whether it's paid performance opportunities with the Cincinnati Symphony Orchestra as part of the **CSO/CCM Diversity Fellowship Program** or a chance to work with some of the world's leading composers and librettists through the **Opera Fusion: New Works Program** with Cincinnati Opera, CCM provides life-changing experiences for tomorrow's performing and media arts professionals.

Internationally acclaimed faculty, classrooms without boundaries and unlimited opportunity. Your future is calling. Take your next step at ccm.uc.edu.



UNIVERSITY OF COLORADO BOULDER

WHAT DISTINGUISHES THIS SCHOOL?

Founded in 1920, the college offers a wide range of programs uniquely combining advanced musical training with professionally oriented experiences and the rich resources of a leading research university. Active as award-winning professional performers, composers, and scholars, faculty members are committed to helping students develop their talents.

LOCATION 301 UCB
Boulder, CO 80309
UNITED STATES
www.colorado.edu/music/

ADMISSIONS 303-492-6301
apply@colorado.edu

Audition Requirements [Audition Requirements](#)

FINANCIAL INFORMATION
[Tuition & Fees](#) / [Financial Aid & Scholarships](#)

CAREER / POST-GRADUATION ASSISTANCE
[Alumni Services](#)

KEY STATISTICS (college level and above)

550 music students
Music Faculty: 60 full time, 30 adjunct

AREAS OF STUDY

Arts Leadership • Brass • Collaborative Piano
• Composition (Performance) • Conducting • Early Music • Jazz Studies & Contemporary Media • Media studies (including audio and video production)
• Music Business • Music Education • Musicology
• Organ • Piano • Strings • Vocal Arts/Opera • Musical Theatre • Winds and Percussion

DEGREE PROGRAMS

[Undergraduate Programs](#) / [Graduate Programs](#)

ADDITIONAL PROGRAMS (non-matriculating/prep)

[Entrepreneurship Center for Music](#)

PANDEMIC & SAFETY: SCHOOL POLICIES

[Policies & Procedures for this school](#)

✓=Yes ✗=No

Proof of vaccination required?

✓ Students ✓ Faculty ✓ Staff

Proof of a negative COVID-19 test required?

✗ Students ✗ Faculty ✗ Administration & staff

Reduced density being considered in:

✗ On-campus housing ✗ Class and/or ensembles

SOCIAL LINKS



UNIVERSITY OF FLORIDA

WHAT DISTINGUISHES THIS SCHOOL?

The student body of the UF School of Music is an exceptional group of regional, national, and international artists and scholars. UF's extraordinary academic reputation, highly accomplished faculty, rigor of professional training, and notable success of our alumni attracts many of the best and brightest students each year.

LOCATION University of Florida
Gainesville, FL 32611
UNITED STATES
musiceducation.arts.ufl.edu/

ADMISSIONS 866-794-8806
musiceducation@arts.ufl.edu

Audition Requirements [Audition Requirements](#)

FINANCIAL INFORMATION
[Tuition & Fees](#)

CAREER / POST-GRADUATION ASSISTANCE

The University of Florida Career Connections Center offers a variety of services, including one-on-one career advice, résumé help, and templates for building a career action plan. Students gain access to our GatorLink platform, where they can schedule meetings with a career planner, look at upcoming workshops and other events, and connect with resources to push their careers to the next level.

KEY STATISTICS (college level and above)

438 music students
Music Faculty: 42 full time, 23 adjunct

AREAS OF STUDY

Music Education

DEGREE PROGRAMS

[Undergraduate Programs](#) / [Graduate Programs](#)

ONLINE COURSES

[Online courses information](#)

76% to 100% will be available as hybrid or online-only courses

PANDEMIC & SAFETY: SCHOOL POLICIES

✓=Yes ✗=No

Proof of vaccination required?

✗ Students ✗ Faculty ✗ Staff

Proof of a negative COVID-19 test required?

✗ Students ✗ Faculty ✗ Administration & staff

Reduced density being considered in:

✗ On-campus housing ✗ Class and/or ensembles

SOCIAL LINKS



UNIVERSITY OF ILLINOIS SCHOOL OF MUSIC

University of Illinois at Urbana-Champaign

WHAT DISTINGUISHES THIS SCHOOL?

Beautiful facilities including the Krannert Center for the Performing Arts • Inclusive community with supportive faculty • Individual attention for students • Diverse Big 10 campus with wide-ranging performance and research opportunities.

LOCATION 1114 West Nevada Street
Urbana, IL 61801
UNITED STATES
music.illinois.edu/

ADMISSIONS 217-244-7899
musicadmissions@illinois.edu

Audition Requirements [Audition Requirements](#)

FINANCIAL INFORMATION

[Tuition & Fees](#) / [Financial Aid & Scholarships](#)

CAREER / POST-GRADUATION ASSISTANCE

The School of Music and the College of Fine + Applied Arts are dedicated to preparing our students for successful careers in their fields. The [Career Services Office](#) offers workshops, job fairs, hands-on sessions, courses in cover letter and résumé writing, individual appointments for professional feedback, and more. The Career Services Mentoring Program helps juniors, seniors, and grad students establish connections and explore career paths through informational online conversations, interviews, and job shadowing.

KEY STATISTICS (college level and above)

725 music students

Music Faculty: 90 full time, 0 adjunct

AREAS OF STUDY

Brass • Collaborative Piano • Composition (Performance) • Conducting • Jazz Studies & Contemporary Media • Media studies (including audio and video production) • Music Business • Music Education • Musicology • Organ • Piano • Strings • Vocal Arts/Opera • Winds & Percussion • Choral Conducting • Computer Science + Music • Instrumental Performance • Jazz Performance • Lyric Theatre • Music Technology • Open Studies • Orchestral Conducting • Piano Pedagogy • Vocal Coaching and Accompanying • Vocal Performance • Wind Band Conducting

DEGREE PROGRAMS

[Undergraduate Programs](#) / [Graduate Programs](#)

ADDITIONAL PROGRAMS (non-matriculating/prep)

[Illinois Summer Youth Music](#)

ONLINE COURSES

[Online courses information](#)

Up to 25% will be available as hybrid or online-only courses

PANDEMIC & SAFETY: SCHOOL POLICIES

[Policies & Procedures for this school](#)

✓=Yes ✗=No

Proof of vaccination required?

✓ Students ✗ Faculty ✗ Staff

Proof of a negative COVID-19 test required?

✗ Students ✓ Faculty ✓ Administration & staff

Reduced density being considered in:

✗ On-campus housing ✗ Class and/or ensembles

SOCIAL LINKS



UNIVERSITY OF MASSACHUSETTS AMHERST

Department of Music & Dance

WHAT DISTINGUISHES THIS SCHOOL?

UMass Amherst offers conservatory-quality education in a university setting. Intensive yet supportive, the music program has a variety of concentrations as well as nationally and internationally renowned faculty dedicated to educating students. A top research university, UMass also enables other majors to be involved musically.

LOCATION 273 Fine Arts Center East
University of Massachusetts
Amherst, MA 01003
UNITED STATES
www.umass.edu/music

ADMISSIONS 413-545-6048
musicadmissions@umass.edu

Audition Requirements

[Undergraduate Audition requirements by instrument](#) / [Graduate Audition requirements by instrument](#)

Prospective undergraduates must submit the Common App before signing up for an audition. Early Action is recommended. To sign up for an audition, students must submit an online [Audition Request Form](#).

FINANCIAL INFORMATION

[Tuition & Fees](#) / [Financial Aid & Scholarships](#)

CAREER / POST-GRADUATION ASSISTANCE

[Career Services](#)

Humanities & Fine Arts Career Planning Rep:

[Caroline Gould](#) / 413-545-6257

KEY STATISTICS (college level and above)

280 music students

Music Faculty: 41 full time, 3 adjunct

AREAS OF STUDY

Brass • Collaborative Piano • Composition (Performance) • Conducting • Jazz Studies & Contemporary Media • Music Education • Piano • Strings • Vocal Arts/Opera • Winds & Percussion • Music Theory • Music History

DEGREE PROGRAMS

[Undergraduate Programs](#) / [Graduate Programs](#)

ADDITIONAL PROGRAMS (non-matriculating/prep)

[The Arts Management Certificate for Campus Undergraduates](#)

ONLINE COURSES

[Online courses information](#)

Percent of hybrid or online-only courses still under consideration

PANDEMIC & SAFETY: SCHOOL POLICIES

[Policies & Procedures for this school](#)

Proof of vaccination required?

✓ Students ✗ Faculty ✗ Staff

Proof of a negative COVID-19 test required?

✗ Students ✗ Faculty ✗ Administration & staff

Reduced density being considered in:

✗ On-campus housing ✗ Class and/or ensembles

SOCIAL LINKS



UNIVERSITY OF MASSACHUSETTS LOWELL

Department of Music

WHAT DISTINGUISHES THIS SCHOOL?

We offer Bachelor of Music majors in Sound Recording Technology, Music Business, Music Education and Music Performance. We are now offering a new major: Composition for New Media!

LOCATION Durgin Hall
35 Wilder Street
Lowell, MA 01854
UNITED STATES
www.uml.edu/FAHSS/Music/

ADMISSIONS 978-934-3931
admissions@uml.edu

Audition Requirements [Audition Requirements](#)

FINANCIAL INFORMATION
[Tuition & Fees](#) / [Financial Aid & Scholarships](#)

CAREER / POST-GRADUATION ASSISTANCE
Internships in Music Business and Sound Recording Technology help provide job experience and placement.

KEY STATISTICS (college level and above)
400 music students
Music Faculty: **16** full time, **45** adjunct

AREAS OF STUDY
Composition (Performance) • Media studies (including audio and video production) • Music Business • Music Education • Composition for New Media • Music Performance

DEGREE PROGRAMS
[Undergraduate Programs](#) / [Graduate Programs](#)

PANDEMIC & SAFETY: SCHOOL POLICIES
✓=Yes ✗=No

Proof of vaccination required?
✓ Students ✗ Faculty ✗ Staff

Proof of a negative COVID-19 test required?
✓ Students ✓ Faculty ✓ Administration & staff

Reduced density being considered in:
✗ On-campus housing ✗ Class and/or ensembles

SOCIAL LINKS 

UNIVERSITY OF MICHIGAN

School of Music, Theatre & Dance

WHAT DISTINGUISHES THIS SCHOOL?

The School's unique relationship as a part of the U-M, ranked as one the top universities in the U.S., provides students with a vast array of options and opportunities. All of our degrees require some academic coursework, most of which can be selected from any area of the University.

LOCATION 1100 Baits Drive, 2290 Moore
Ann Arbor, MI 48109
UNITED STATES
smtd.umich.edu

ADMISSIONS 734-764-0593
smtd.admissions@umich.edu

Audition Requirements [Audition Requirements](#)

FINANCIAL INFORMATION
[Tuition & Fees](#) / [Financial Aid & Scholarships](#)

CAREER / POST-GRADUATION ASSISTANCE
The School of Music, Theatre & Dance **EXCEL** (Excellence in Entrepreneurship, Career Empowerment & Leadership) Program provides entrepreneurship training and career services for all U-M students engaged in the performing arts. Our goal is to enable all our students to forge a viable career in the performing arts by exploring, developing, and leveraging their talents, training, skills, and ambitions.

EXCEL catalyzes success for U-M SMTD students and alumni through courses, co-curricular workshops, ongoing mentoring, and \$100,000 in student project and venture funding.

KEY STATISTICS (college level and above)
1100 music students
Music Faculty: **148** full time, **75** adjunct

AREAS OF STUDY
Arts Leadership • Brass • Collaborative Piano • Composition (Performance) • Conducting • Early Music • Jazz Studies & Contemporary Media • Media studies (including audio and video production) • Music Business • Music Education • Musicology • Music Therapy • Organ • Piano • Strings • Vocal Arts/Opera • Performing Arts Technology • Dance Musical Theatre • Theatre

DEGREE PROGRAMS
[Undergraduate Programs](#) / [Graduate Programs](#)

ADDITIONAL PROGRAMS (non-matriculating/prep)
[Engagement & Outreach](#)

PANDEMIC & SAFETY: SCHOOL POLICIES
[Policies & Procedures for this school](#)
✓=Yes ✗=No

Proof of vaccination required?
✓ Students ✓ Faculty ✓ Staff

Proof of a negative COVID-19 test required?
✓ Students ✓ Faculty ✓ Administration & staff

Reduced density being considered in:
✓ On-campus housing ✓ Class and/or ensembles

SOCIAL LINKS    

UNIVERSITY OF NORTH CAROLINA SCHOOL OF THE ARTS

School of Music

WHAT DISTINGUISHES THIS SCHOOL?

UNCSA School of Music offers a transformative conservatory experience that prepares students for professional careers. The program combines intensive individual study under professional artist-mentors with a variety of performance opportunities including collaborations with other UNCSA arts schools. Students attend master classes with distinguished guest artists and perform in state-of-the-art facilities.

LOCATION 1533 South Main Street
Winston-Salem, NC 27127
UNITED STATES
www.uncsa.edu

ADMISSIONS 336-770-3290
admissions@uncsa.edu

Audition Requirements

The requirements for admissions varies according to academic level.

[Undergraduate](#) / [Graduate](#) / [High School](#)

FINANCIAL INFORMATION

[Tuition & Fees](#) / [Financial Aid & Scholarships](#)

CAREER / POST-GRADUATION ASSISTANCE

The [Office of Career Development](#) provides students with a central resource for assistance with their career planning. It is designed to work hand-in-hand with the arts schools in supplementing career preparation training. UNCSA students



participate in career development seminars as part of their curriculum.

KEY STATISTICS (college level and above)

171 music students

Music Faculty: 26 full time, 20 adjunct

142 scholarships awarded

AREAS OF STUDY

Brass • Collaborative Piano • Composition (Performance) • Conducting • Organ • Piano • Strings • Vocal Arts/Opera • Winds & Percussion • Guitar

DEGREE PROGRAMS

[Undergraduate Programs](#) / [Graduate Programs](#)

Additional details: The Areas of Study above are concentrations within the school. All are geared toward performance. There are courses in jazz, theory, etc., but they are not concentrations.

ADDITIONAL PROGRAMS (non-matriculating/prep)

[A.J. Fletcher Opera Institute](#)

[Chrysalis Chamber Music Institute](#)

PANDEMIC & SAFETY: SCHOOL POLICIES

[Policies & Procedures for this school](#)

✓=Yes ✗=No

Proof of vaccination required?

✗ Students ✗ Faculty ✗ Staff

Proof of a negative COVID-19 test required?

✗ Students ✗ Faculty ✗ Administration & staff

Reduced density being considered in:

✗ On-campus housing ✗ Class and/or ensembles

SOCIAL LINKS [Twitter](#) [Facebook](#) [YouTube](#) [Instagram](#)

UNIVERSITY OF NORTH CAROLINA
SCHOOL OF THE ARTS

“A.J. Fletcher Opera Institute has given me so many opportunities to create art, tell stories and contribute to the opera world.”

— Brennan Martinez, '20



Dance
Design & Production
Drama
Filmmaking
Music
Powering Creativity

Celebrating the 20th anniversary of the renowned A.J. Fletcher Opera Institute.

UNCSA.EDU/FLETCHER20

UNIVERSITY OF NORTH TEXAS

WHAT DISTINGUISHES THIS SCHOOL?

The UNT College of Music is the largest public-university music program in the United States and one of the most globally respected. We offer fully accredited degrees, bachelor to doctoral. We present about 1,100 events annually and our alumni work across the globe in award-winning careers.

LOCATION 1155 Union Circle #311367
Denton, TX 76203
UNITED STATES
music.unt.edu/

ADMISSIONS 940-565-3860
collegeofmusic@unt.edu

Audition Requirements
[Undergraduate](#) / [Graduate](#)

FINANCIAL INFORMATION
[Tuition & Fees](#) / [Financial Aid & Scholarships](#)

CAREER / POST-GRADUATION ASSISTANCE
The Career Development and Entrepreneurship in Music program is the UNT College of Music's avenue to produce successful 21st-century musicians. We help students develop an entrepreneurial mindset to build financially sustainable and professionally satisfying arts careers that positively impact their communities. Our program includes academic coursework, internship opportunities, a music entrepreneurship competition, an innovative music programming competition, a related field in music entrepreneurship, frequent guest speakers, one-on-one career advising and mentorship, community engagement, networking opportunities, a Student Artist Entrepreneurs organization (S.A.E.), and other events. Our students are launching their own businesses as a result of our program offerings.

KEY STATISTICS (college level and above)
1575 music students
Music Faculty: **117** full time, **38** adjunct

AREAS OF STUDY
Brass • Collaborative Piano • Composition (Performance) • Conducting • Early Music • Jazz Studies & Contemporary Media • Media studies (including audio and video production) • Music Business • Music Education • Musicology • Music Therapy • Organ • Piano • Strings • Vocal Arts/Opera • Winds & Percussion

DEGREE PROGRAMS
[Undergraduate Programs](#) / [Graduate Programs](#)

ADDITIONAL PROGRAMS (non-matriculating/prep)
[Center for Experimental Music and Intermedia](#)
[Texas Center for Performing Arts Health Community Program](#)

ONLINE COURSES
[Online courses information](#)
Up to 25% will be available as hybrid or online-only courses

PANDEMIC & SAFETY: SCHOOL POLICIES
[Policies & Procedures for this school](#)
✓=Yes ✗=No

Proof of vaccination required?
✗ Students ✗ Faculty ✗ Staff

Proof of a negative COVID-19 test required?
✗ Students ✗ Faculty ✗ Administration & staff

Reduced density being considered in:
✗ On-campus housing ✗ Class and/or ensembles

SOCIAL LINKS    

THE UNIVERSITY OF TAMPA

WHAT DISTINGUISHES THIS SCHOOL?

UT is a medium-sized, private institution located in downtown Tampa, FL. Our student body consists of 9,000 undergraduate students from all 50 states and 132 countries. We offer over 200 areas of study, all of which focus on experiential education through hands-on learning, internships, study abroad, & research opportunities.

LOCATION 401 West Kennedy Boulevard
Tampa, FL 33616
UNITED STATES
www.ut.edu

ADMISSIONS 813-257-3489
admissions@ut.edu

Audition Requirements [Audition Requirements](#)

FINANCIAL INFORMATION
[Tuition & Fees](#) / [Financial Aid & Scholarships](#)

CAREER / POST-GRADUATION ASSISTANCE
[Career Services](#)

KEY STATISTICS (college level and above)
150 music students
Music Faculty: **8** full time, **40** adjunct

AREAS OF STUDY
Brass • Composition (Performance) • Music Business • Music Education • Music Therapy • Organ • Piano • Strings • Vocal Arts/Opera

DEGREE PROGRAMS
[Undergraduate Programs](#) / [Graduate Programs](#)
Additional details: The vocal/instrumental options in Areas of Study above are offered as tracks/concentrations for the B.A. in Music.

PANDEMIC & SAFETY: SCHOOL POLICIES
[Policies & Procedures for this school](#)
✓=Yes ✗=No

Proof of vaccination required?
✗ Students ✗ Faculty ✗ Staff

Proof of a negative COVID-19 test required?
✗ Students ✗ Faculty ✗ Administration & staff

Reduced density being considered in:
✗ On-campus housing ✗ Class and/or ensembles

SOCIAL LINKS    

USC THORNTON SCHOOL OF MUSIC

University of Southern California

As the music profession changes, the USC Thornton School of Music offers an innovative education that prepares students for careers at the highest level as performers, composers, educators, and industry leaders. We do this while making the most of our location in Los Angeles, the nation's center for creativity and original art of all kinds.

Our three exceptional divisions offer cross-genre experiences unique among the country's top music schools. As a leading international research institution, USC offers students a rigorous, global education that enriches their artistic and musical development.

LOCATION 3450 Watt Way, TMC 200
Los Angeles, CA 90089-0851
UNITED STATES
music.usc.edu/

ADMISSIONS 213-740-8986
uscmusic@usc.edu

Audition Requirements [Audition Requirements](#)

FINANCIAL INFORMATION

[Tuition & Fees](#) / [Financial Aid & Scholarships](#)

CAREER / POST-GRADUATION ASSISTANCE

Various career-related courses are available for enrollment and one-on-one mentorship with faculty is a central aspect of the USC Thornton experience. The USC Career Center offers career services to current students and recent alums. USC Thornton alumni enjoy tremendous success in a wide array of music professions.

USC Thornton

School of Music

KEY STATISTICS (college level and above)

1000 music students

Music Faculty: 90 full time, 90 adjunct

AREAS OF STUDY

Arts Leadership • Brass • Collaborative Piano
• Composition (Performance) • Early Music • Jazz
Studies & Contemporary Media • Media studies
(including audio and video production) • Music
Business • Music Education • Musicology • Music
Therapy • Organ • Piano • Strings • Vocal Arts/Opera
• Winds & Percussion • Choral & Sacred Music
• Classical Guitar • Community Music • Music
Industry • Music Production • Music Teaching
& Learning • Popular Music Performance
• Screen Scoring • Studio Guitar

DEGREE PROGRAMS

[Undergraduate Programs](#) / [Graduate Programs](#)

PANDEMIC & SAFETY: SCHOOL POLICIES

[Policies & Procedures for this school](#)

✓=Yes ✗=No

Proof of vaccination required?

✓ Students ✓ Faculty ✓ Staff

Proof of a negative COVID-19 test required?

✓ Students ✓ Faculty ✓ Administration & staff

Reduced density being considered in:

✗ On-campus housing ✗ Class and/or ensembles

SOCIAL LINKS



UNIVERSITY
of SOUTHERN
CALIFORNIA

THORNTON
SCHOOL of
MUSIC

MUSIC IN THE CITY OF ANGELS

The USC Thornton School of Music is located in the heart of Los Angeles, one of the world's most vibrant music centers.

Bassoonist Jaquain Sloan (MM '18, GCRT '20), pictured here in downtown Los Angeles, is the African-American Orchestra Fellow of the Detroit Symphony Orchestra.

USC Thornton | MUSIC.USC.EDU | @USCTHORNTON



DEGREE OPTIONS

Bachelor of Music Degrees in Music Education, Performance, Composition, Music Theory, Music History and Music Business
Bachelor of Arts Degree in Music
Master of Music Degrees in Music Education and Performance

potsdam.edu/crane



WESTMINSTER COLLEGE OF THE ARTS

Rider University

WHAT DISTINGUISHES THIS SCHOOL?

Art opens our minds, expands our world, and changes us for the better. That's why every Rider student has the opportunity to explore their artistic authenticity at the Westminster College of the Arts, whether pursuing a career in the arts or seeking the enrichment found through its study.

LOCATION 2083 Lawrenceville Road
 Lawrenceville, NJ 08683
 UNITED STATES
www.rider.edu/wca

ADMISSIONS 609-921-7100 x8307
wcainfo@rider.edu

Audition Requirements
[Undergraduate audition requirements](#) / [Graduate audition requirements](#)

FINANCIAL INFORMATION
[Tuition & Fees](#) / [Financial Aid & Scholarships](#)

CAREER / POST-GRADUATION ASSISTANCE
 All students at Westminster College of the Arts have access to the resources and assistance offered through the [Career Services](#) department at Rider University. Students are also encouraged by their teachers and advisors to explore opportunities in Young Arts Programs and internships, both at Westminster and around the world.

KEY STATISTICS (college level and above)
 450 music students
Music Faculty: 34 full time, 50 adjunct

AREAS OF STUDY
 Arts Leadership • Composition (Performance)
 • Conducting • Jazz Studies & Contemporary Media
 • Music Business • Music Education • Musicology
 • Music Therapy • Organ • Piano • Vocal Arts/Opera
 • Acting For Film, Television and Theatre • Dance
 • Dance Science • Musical Theatre • Popular Music Studies • Sacred Music • Voice Pedagogy

DEGREE PROGRAMS
[Undergraduate Programs](#) / [Graduate Programs](#)

ONLINE COURSES
[Online courses information](#)
 Up to 25% will be available as hybrid or online-only courses

PANDEMIC & SAFETY: SCHOOL POLICIES
[Policies & Procedures for this school](#)
 ✓=Yes X=No

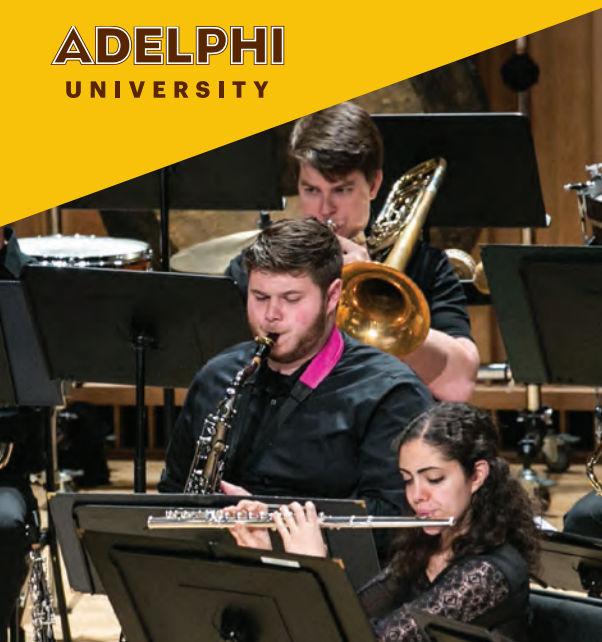
Proof of vaccination required?
 ✓ Students X Faculty X Staff

Proof of a negative COVID-19 test required?
 X Students X Faculty X Administration & staff

Reduced density being considered in:
 X On-campus housing X Class and/or ensembles

SOCIAL LINKS     

ADELPHI UNIVERSITY



MUSIC PROGRAMS

- ▶ **BS in Music Education**
- ▶ **BS in Music**
with concentrations in
 - Composition
 - Jazz Studies
 - Music Therapy
 - Instrumental Performance
 - Piano Performance
 - Vocal Performance
- ▶ **Music Minor**
- ▶ **Minor in Digital Recording Arts and Music Technology**

Adelphi University • music.adelphi.edu

YALE SCHOOL OF MUSIC

Yale University

At the Yale School of Music, we prepare exceptional students for service to the profession and to society. The School fosters a vibrant musical environment where graduate-level performers and composers realize their highest artistic potential with an internationally distinguished faculty. In preparing students for roles as cultural leaders, the School engages with the University's intellectual and technological resources and collaborates with artistic centers throughout the world.

WHAT DISTINGUISHES THIS SCHOOL?

YSM maintains a highly selective admission process, each year admitting approximately 100 students who come from prestigious American and international conservatories and universities to study with Yale's distinguished faculty. A full tuition award and living stipend is given to all students who are admitted to the School.

LOCATION 98 Wall Street
PO Box 208246
New Haven, CT 06520-8246
UNITED STATES
music.yale.edu/

ADMISSIONS 203-432-4155
gradmusic.admissions@yale.edu

Audition Requirements [Audition Requirements](#)

FINANCIAL INFORMATION
[Tuition & Fees](#) / [Financial Aid & Scholarships](#)

CAREER / POST-GRADUATION ASSISTANCE
[Career Strategies](#)

Yale SCHOOL OF MUSIC

KEY STATISTICS (college level and above)
200 music students
Music Faculty: **32** full time, **27** adjunct

AREAS OF STUDY

Brass • Collaborative Piano • Composition (Performance) • Early Music • Organ • Piano • Strings • Vocal Arts/Opera • Winds & Percussion • Conducting (Choral) • Conducting (Orchestral) • Guitar • Harp • Harpsichord • String Quartet

DEGREE PROGRAMS

[Undergraduate Programs](#) / [Graduate Programs](#)
Additional details: Master of Music; Master of Musical Arts; Doctor of Musical Arts; Artist Diploma; Certificate in Performance; BA/MM; String Quartet Fellowship; Collaborative Piano Fellowship

ADDITIONAL PROGRAMS (non-matriculating/prep)
[Norfolk Chamber Music Festival/Yale Summer School of Music](#)
[Morris Steinert Collection of Musical Instruments](#)
[Music in Schools Initiative](#)

PANDEMIC & SAFETY: SCHOOL POLICIES
✓=Yes ✗=No

Proof of vaccination required?
✓ Students ✓ Faculty ✓ Staff

Proof of a negative COVID-19 test required?
✗ Students ✗ Faculty ✗ Administration & staff

Reduced density being considered in:
✗ On-campus housing ✗ Class and/or ensembles

SOCIAL LINKS    



Yale SCHOOL OF MUSIC

The stage is yours.

Mastery of craft is just the beginning. At the Yale School of Music, we provide students with the freedom to think big and the space to carve their own paths.

music.yale.edu

In addition to the Music Schools featured in this special report, the [Musical America database](#) of more than 1200 music schools worldwide is free of charge for the month of September 2021.

[A Guide to Music Schools](#)

View the 2021–22 Guide online along with information about additional schools.

[Conservatories as Good Citizens: Four Success Stories](#)

[Where Training in the Arts Meets Training for Life](#)

In The Next Issue...

**Summer Camps,
Institutes & Programs**

The Musical America Guide

Coming 2 November 2021

Questions? Email info@musicalamerica.com

Advertiser Index

Adelphi University Department of Music..... 44

The Digital Concert Hall of the Berliner Philharmoniker 36

Boston Conservatory at Berklee 6

Chapman University..... 30

Crane School of Music, SUNY Potsdam 44

DePaul University School of Music..... 12

The Eastman School of Music 14

Fredonia School of Music, SUNY Fredonia..... 32

The Glenn Gould School..... 17

The Juilliard School..... 22

Longy School of Music of Bard College 23

Manhattan School of Music 24

Northeastern University 19

Northwestern University Bienen School of Music..... 4

Oberlin Conservatory of Music..... 20

The Orchestra Now..... 5

Pacific Region International Summer Music Association
(PRISMA) Festival & Academy..... 13

The Peabody Conservatory of the Johns Hopkins University 29

Royal College of Music..... 26

The Shepherd School of Music—Rice University 5

The Tianjin Juilliard School..... 35

University of Cincinnati College—Conservatory of Music (CCM) 37

The University of Michigan School of Music, Theatre & Dance..... 9

University of North Carolina School of the Arts 41

USC Thornton School of Music 43

Yale School of Music 45

Stephanie Challenger
Publisher and Managing Editor

Susan Elliott
Editor, News and Special Reports
editor@musicalamerica.com

Frances Wan
Design Director | Database Publishing Specialist

Howard Roth
Business Consultant

Clive Paget
Features Editor, Musical America Directory

Bill Esposito
Manager of Listing Services
listings@musicalamerica.com

Tony Maiorino
Advertising Sales Representative
609-448-3346 ■ info@musicalamerica.com

Carolyn Eychenne (Europe)
Advertising Sales Representative
33.1.39.58.14.01 ■ carolyn@eychenne.me

Andrea Rancati (Italy)
Advertising Sales Representative
39.02.703.00088 ■ arancati@rancatinet.it

Debra Kraft
Account Coordinator
dkraft@musicalamerica.com

PUBLISHED BY

Performing Arts Resources, LLC
Your source for news and information

PERFORMING ARTS RESOURCES, LLC
14846 Gates Avenue, Magnolia Springs, AL 36555
609-651-0874 ■ info@musicalamerica.com