



FTTX Solutions

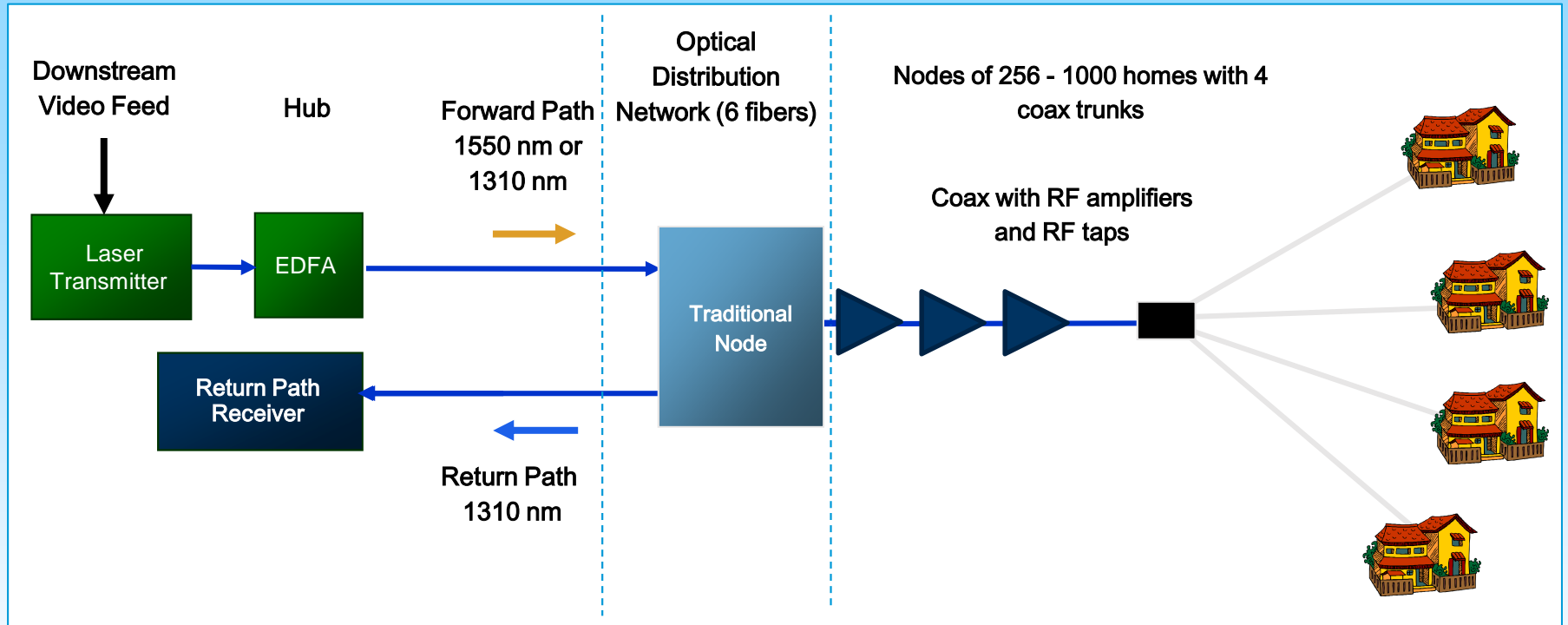
SCTE N-CA Tech Days & Vendor Show

Scott Barr - AM

Craig Fleming - FAE

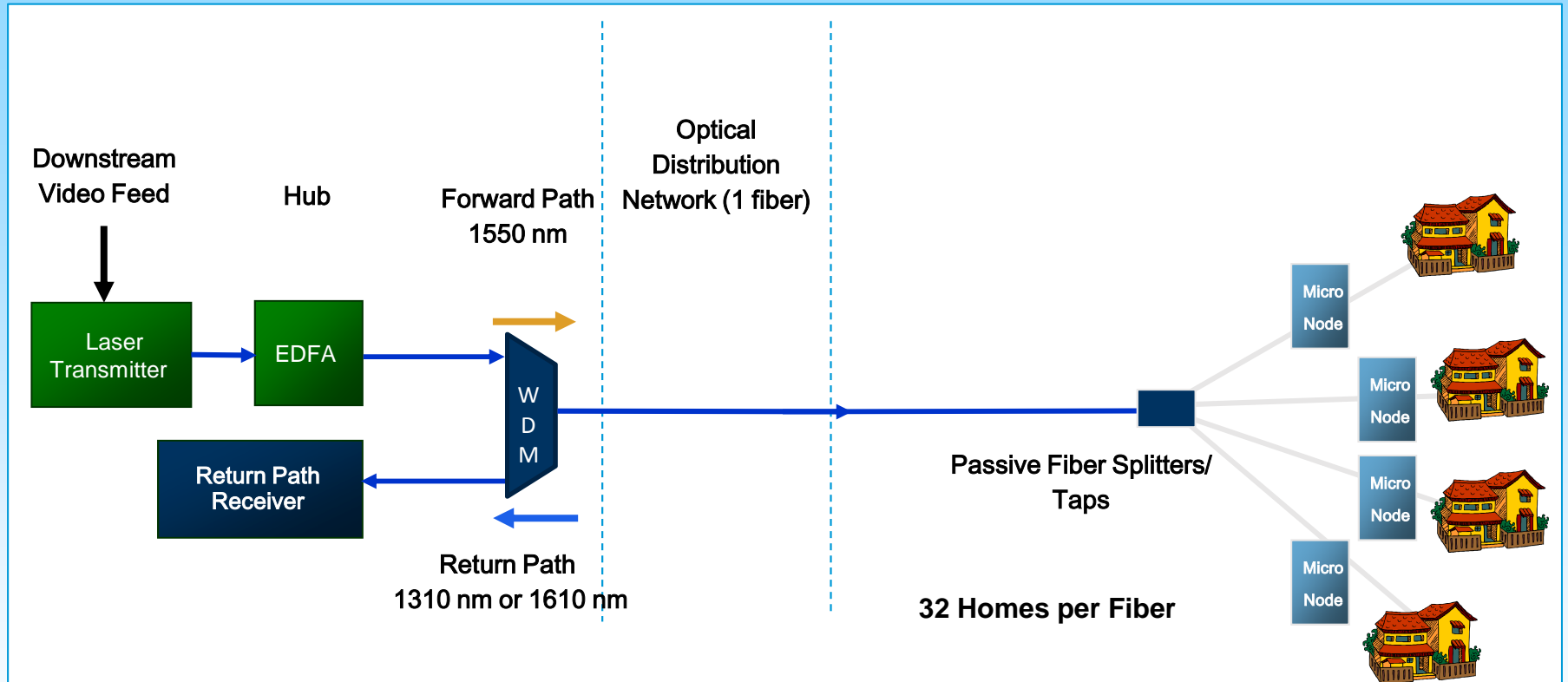
04/12/2017

Traditional HFC Architecture



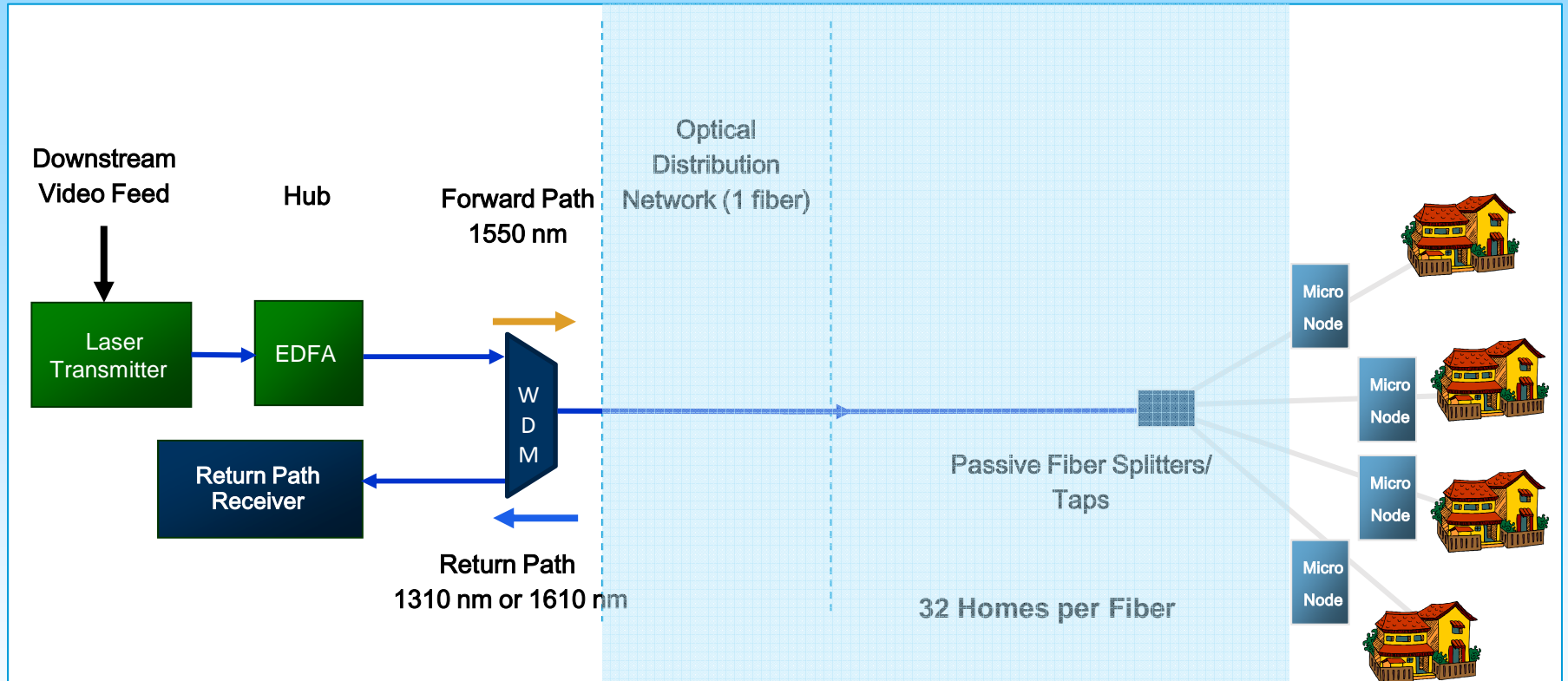
- Migrate to single fiber per node by adding WDM

Evolved to RFoG Architecture



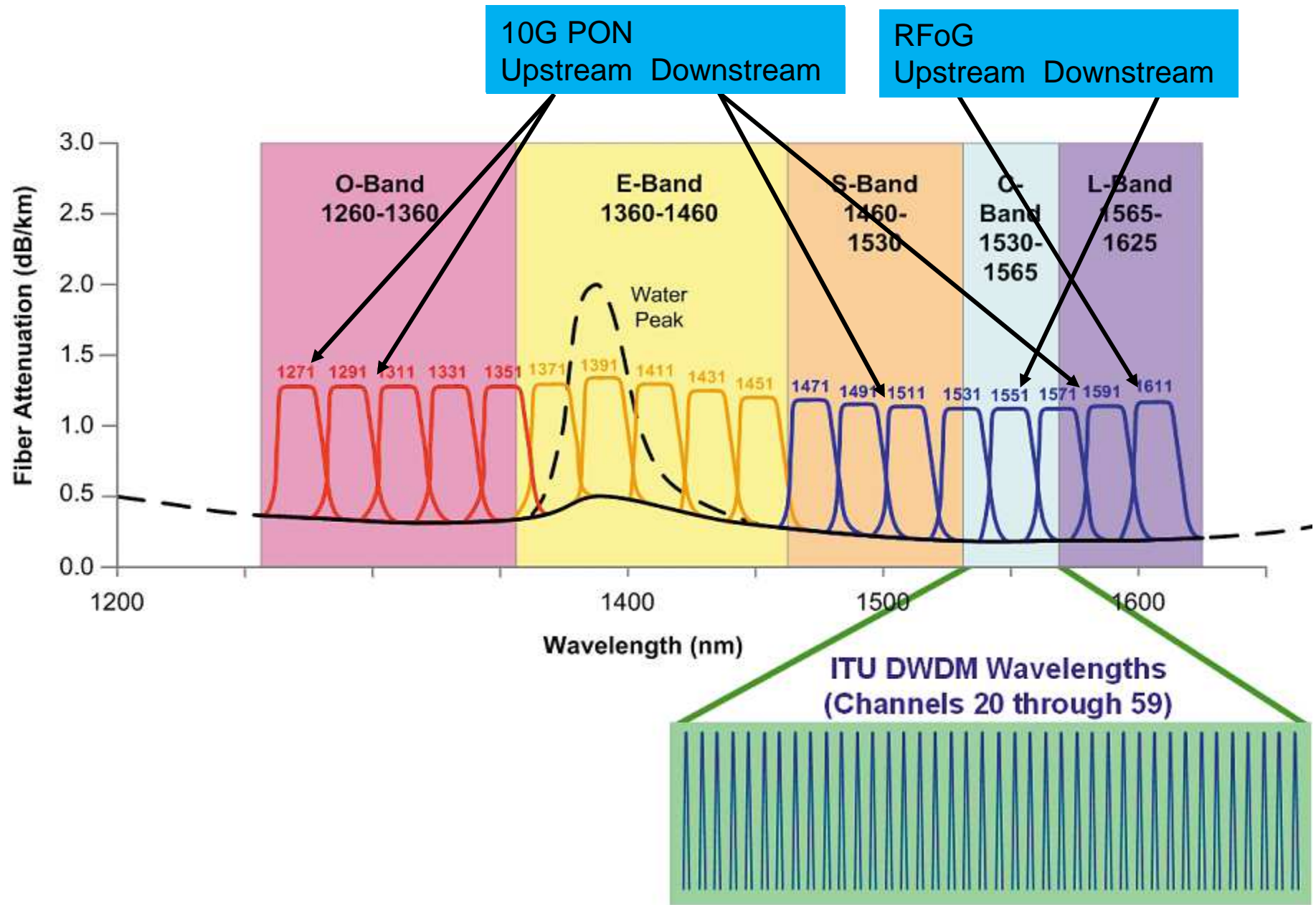
- Society of Cable Television Engineers
 - Radio Frequency Over Glass (RFoG), SCTE Standard 174 2010
- Migrate to single fiber per node by adding WDM
- Remove amplifiers and RF Taps
- Take fiber to each home via taps and splitters
- Shrink the HFC node and place one with each subscriber

Evolved to RFoG Architecture



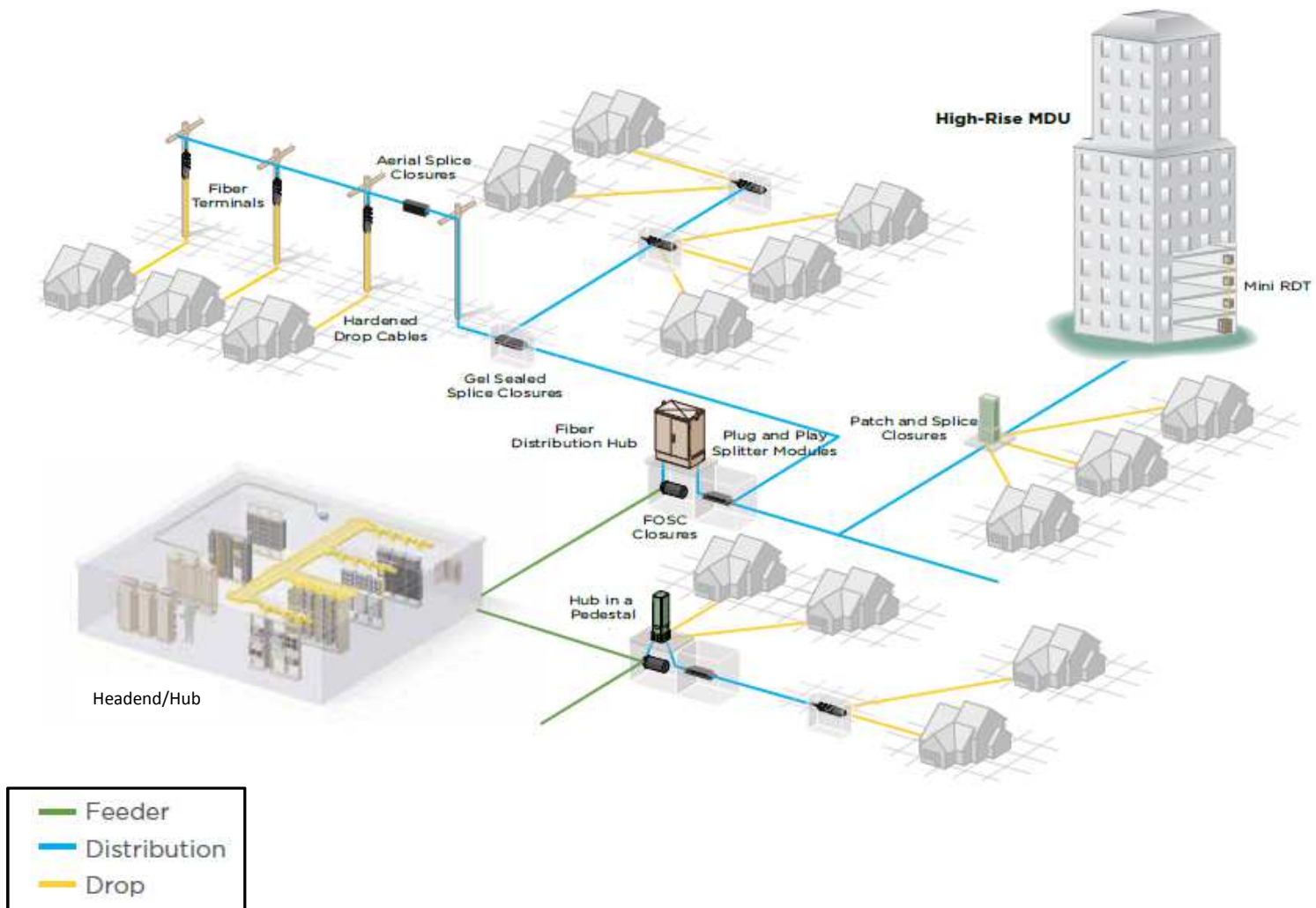
- Point to Multipoint (P2MP)
- Uses Existing Back Office And Subscriber Equipment
- SCTE Recommended Budget is 25db (10 to 20 KM Reach)
- 1:32 Splitter Option
- Gateway to Ethernet PON's

FTTX Wavelength Allocation



FTTX Architecture

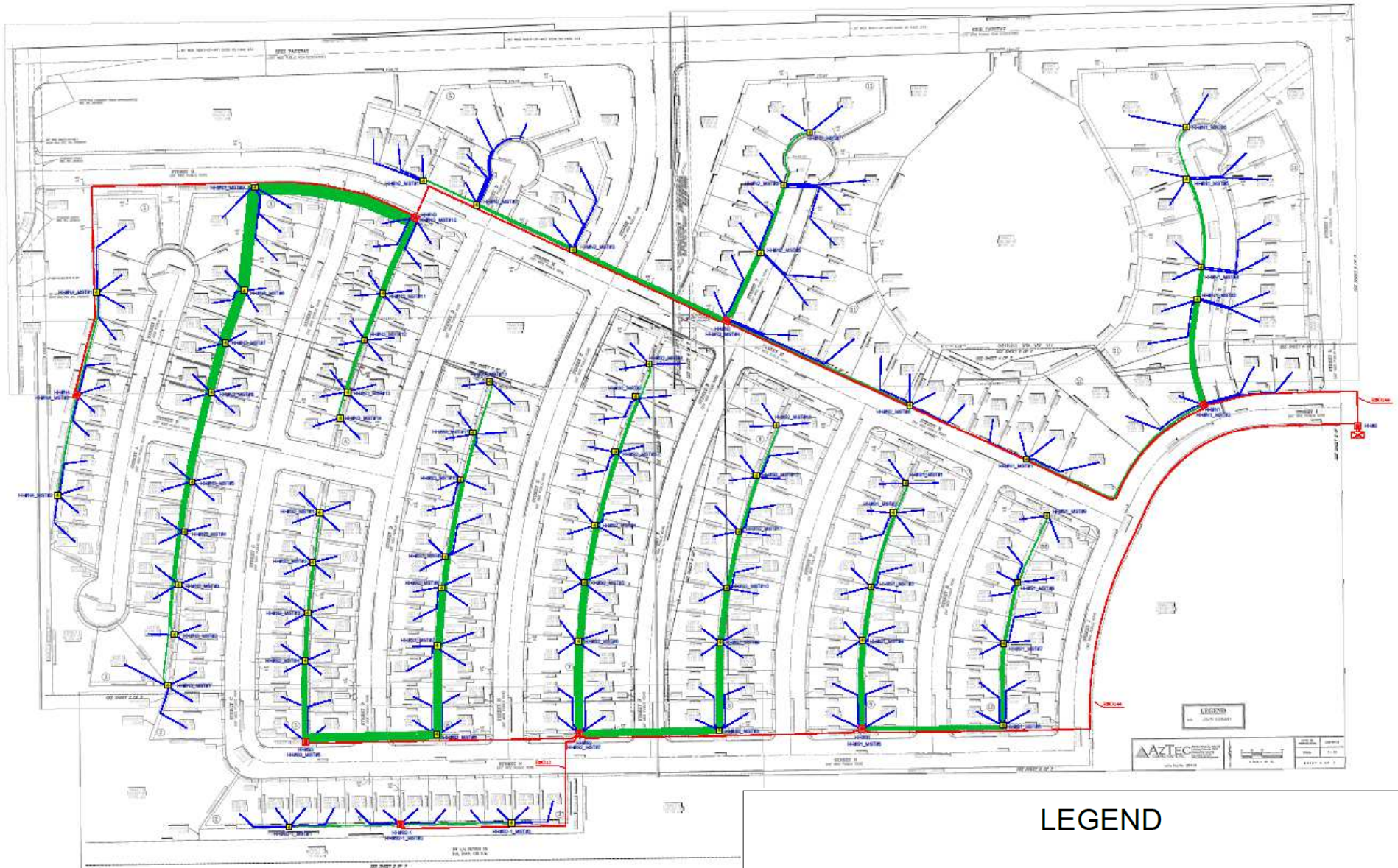
TYPICAL FIBER-TO-THE-PREMISES APPLICATION











FTTX Subdivision Drawing

SCTE N-CA Tech Days & Vendor Show 041217

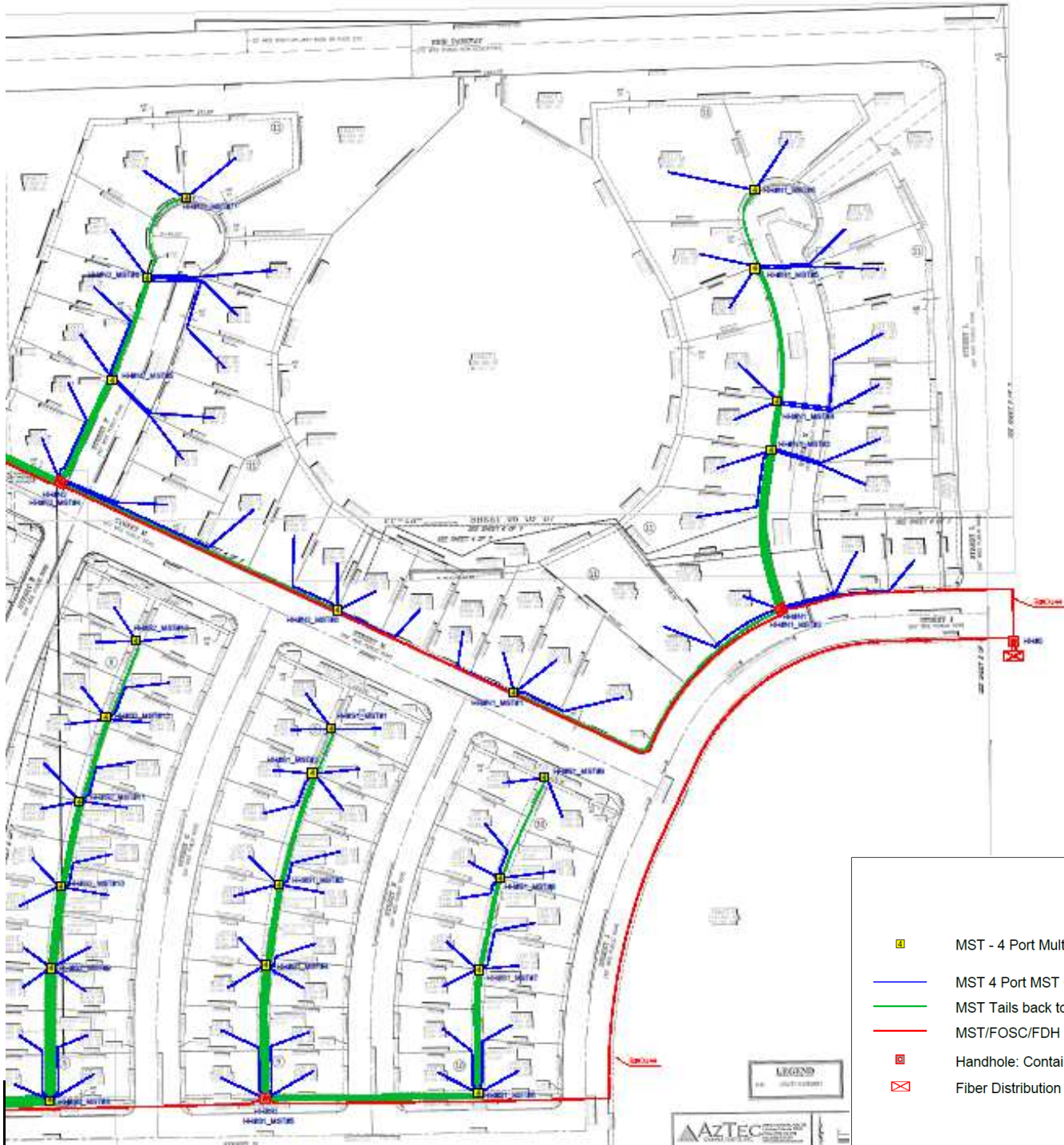


LEGEND

-  MST - 4 Port Multi-Service Tap
-  MST 4 Port MST Cable
-  MST Tails back to FOSC Aggregation Point
-  MST/FOSC/FDH Aggregation Trunk Fiber Distribution Cable
-  Handhole: Contains FOSC 450 Splice Closure and MST - 4 Port Multi-Service Tap
-  Fiber Distribution Hub

Fiber Distribution Cabinet And Node











LEGEND

- MST - 4 Port Multi-Service Tap
- MST 4 Port MST Cable
- MST Tails back to FOSC Aggregation Point
- MST/FOSC/FDH Aggregation Trunk Fiber Distribution Cable
- Handhole: Contains FOSC 450 Splice Closure and MST - 4 Port Multi-Service Tap
- ⊠ Fiber Distribution Hub



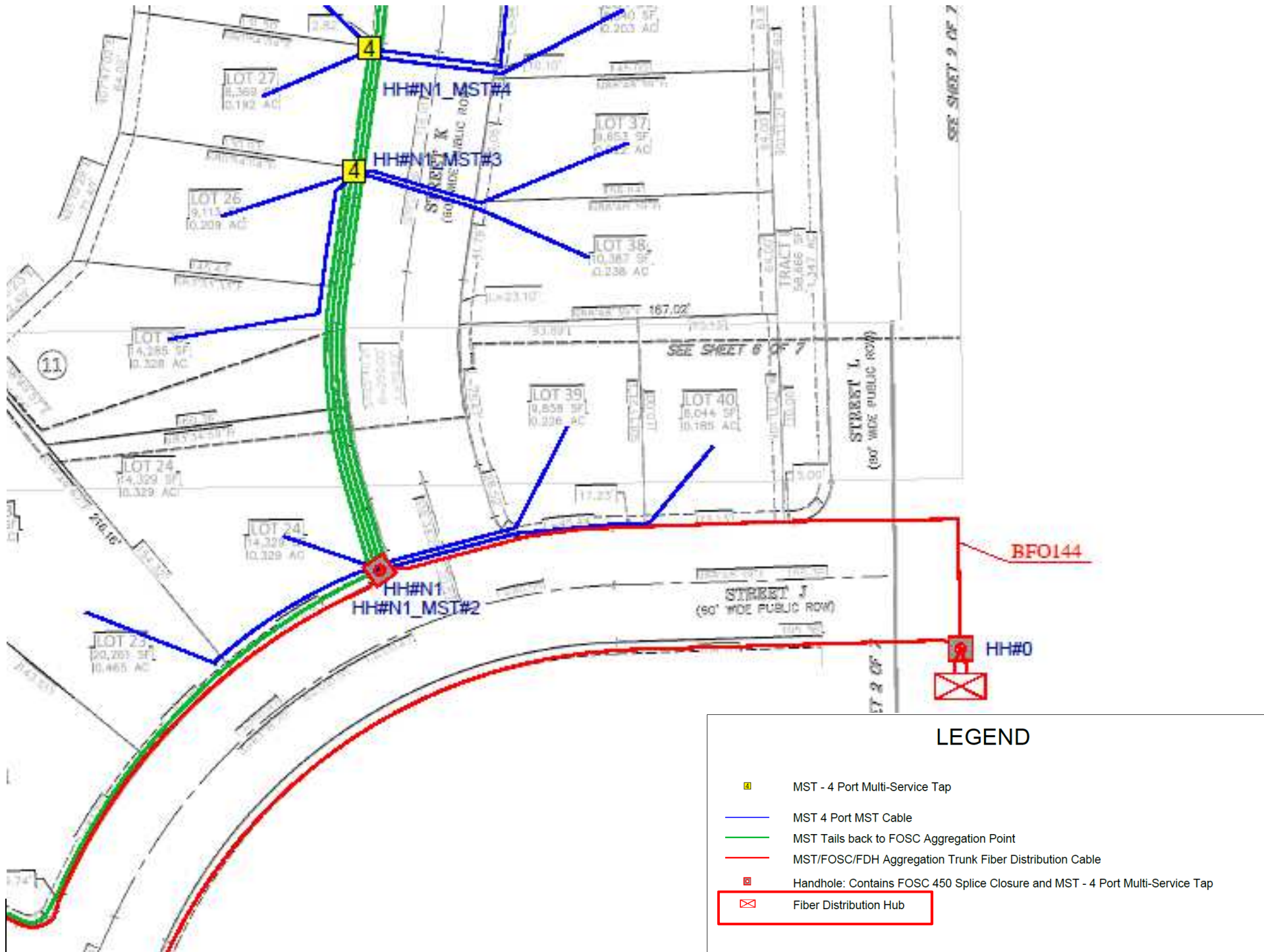
LEGEND

-  MST - 4 Port Multi-Service Tap
-  MST 4 Port MST Cable
-  MST Tails back to FOSC Aggregation Point
-  MST/FOSC/FDH Aggregation Trunk Fiber Distribution Cable
-  Handhole: Contains FOSC 450 Splice Closure and MST - 4 Port Multi-Service Tap
-  Fiber Distribution Hub

COMMScope®

Outside Plant Solutions

SCTE N-CA Tech Days & Vendor Show 041217



LEGEND

- MST - 4 Port Multi-Service Tap
- MST 4 Port MST Cable
- MST Tails back to FOSC Aggregation Point
- MST/FOSC/FDH Aggregation Trunk Fiber Distribution Cable
- Handhole: Contains FOSC 450 Splice Closure and MST - 4 Port Multi-Service Tap
- ⊠ Fiber Distribution Hub

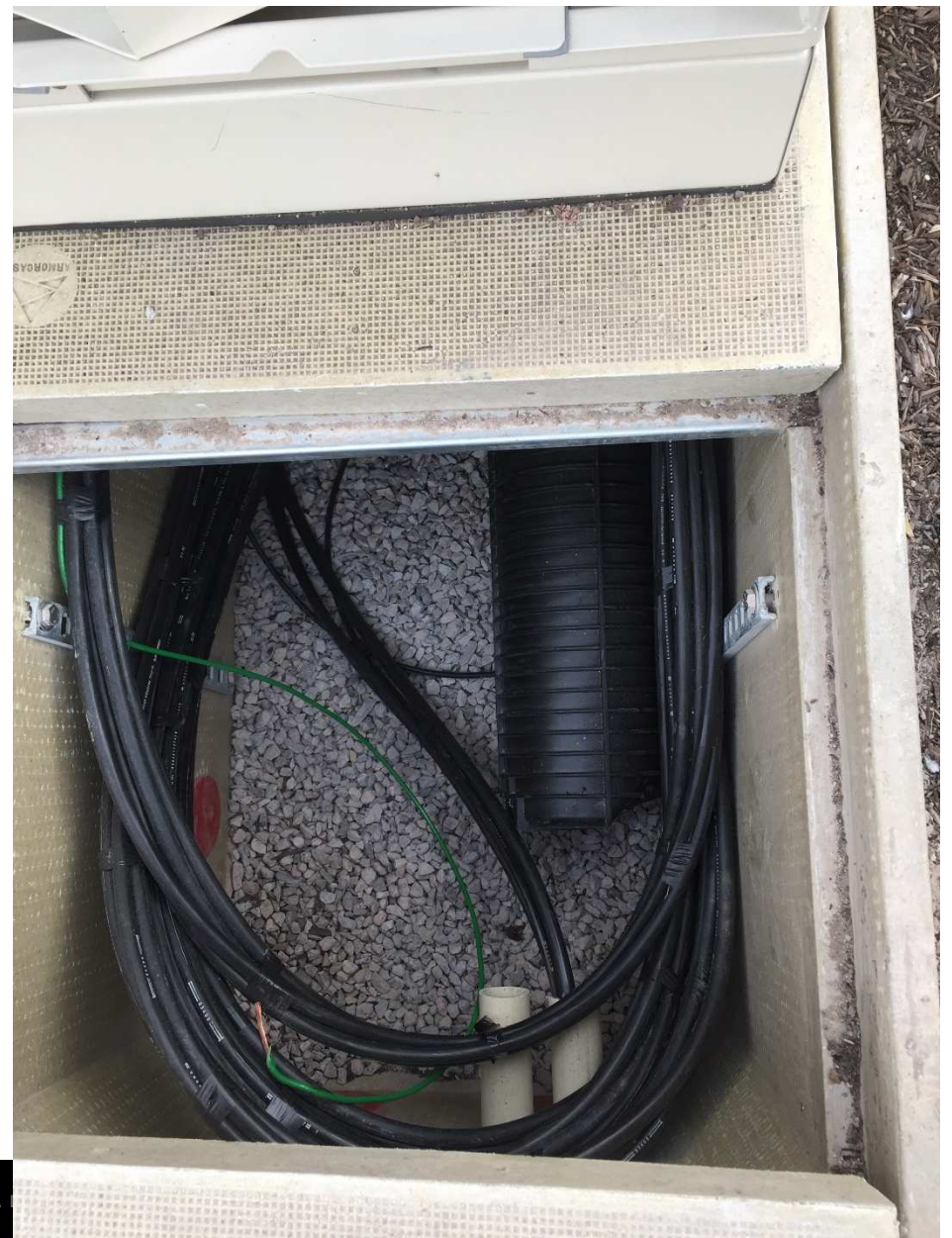
Fiber Distribution Cabinet



Reliability, Flexibility and Operational Benefits

- Bend radius protection
- Intuitive cable routing
- Easy fiber/connector access
- Physical protection

Fiber Distribution Cabinet

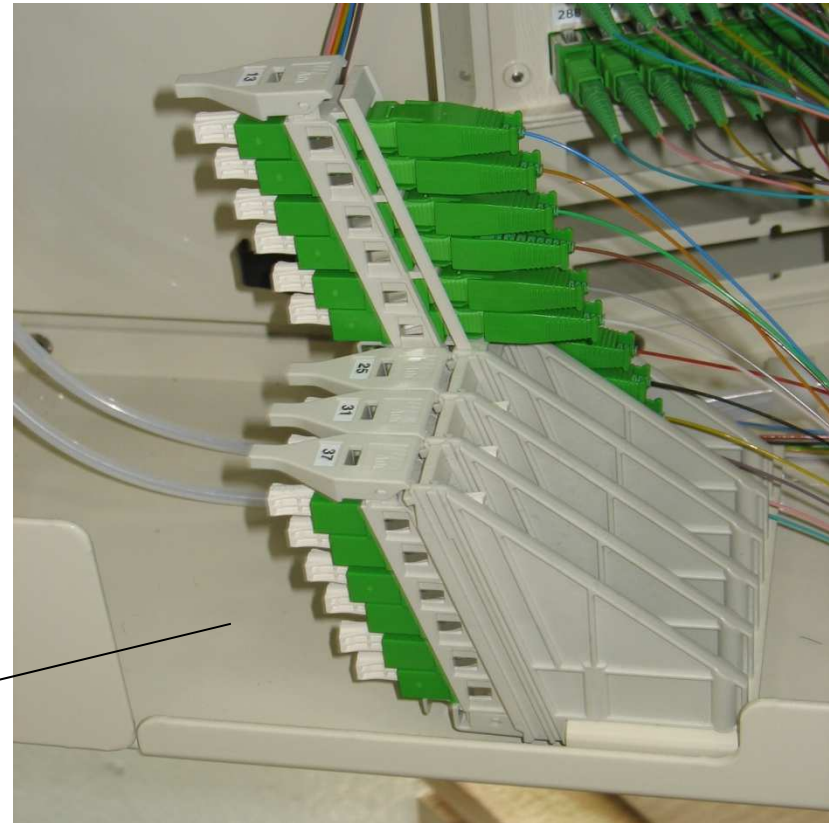
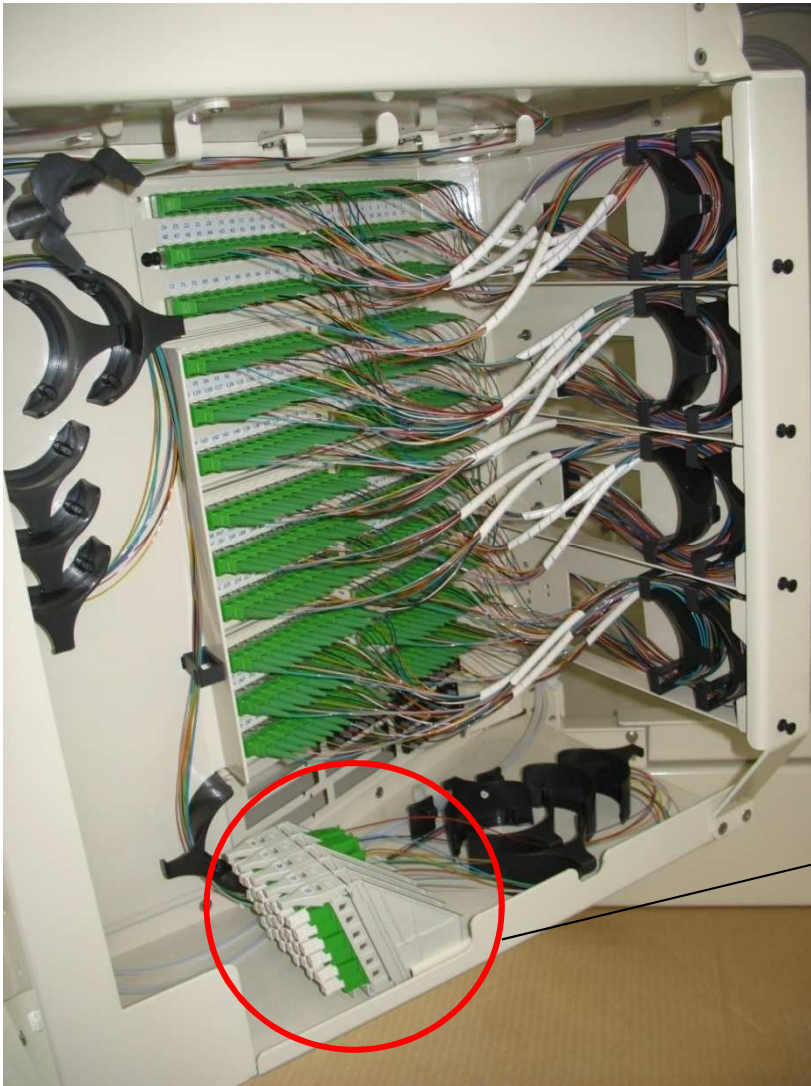


Fiber Distribution Cabinet – FDH Swing Frame

- Unique Swing Frame Design
- Convenient Access to Rear of Termination Shelf for Cleaning/Maintenance
- Modular Growth
 - Future distribution cables
 - Future patch panels
 - Future splitter modules
- Quick Release Latch Provides Easy Access to Rear and Securely Locks Chassis Into Place

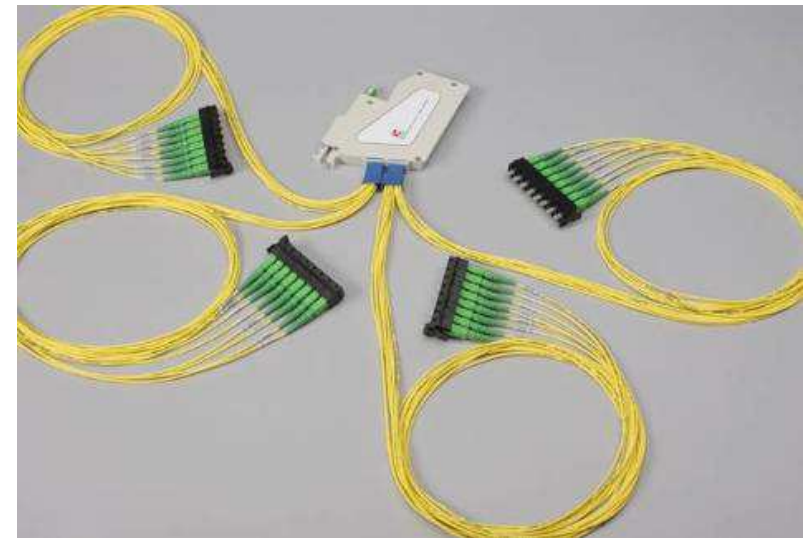


Fiber Distribution Cabinet - Pass-Through Panel

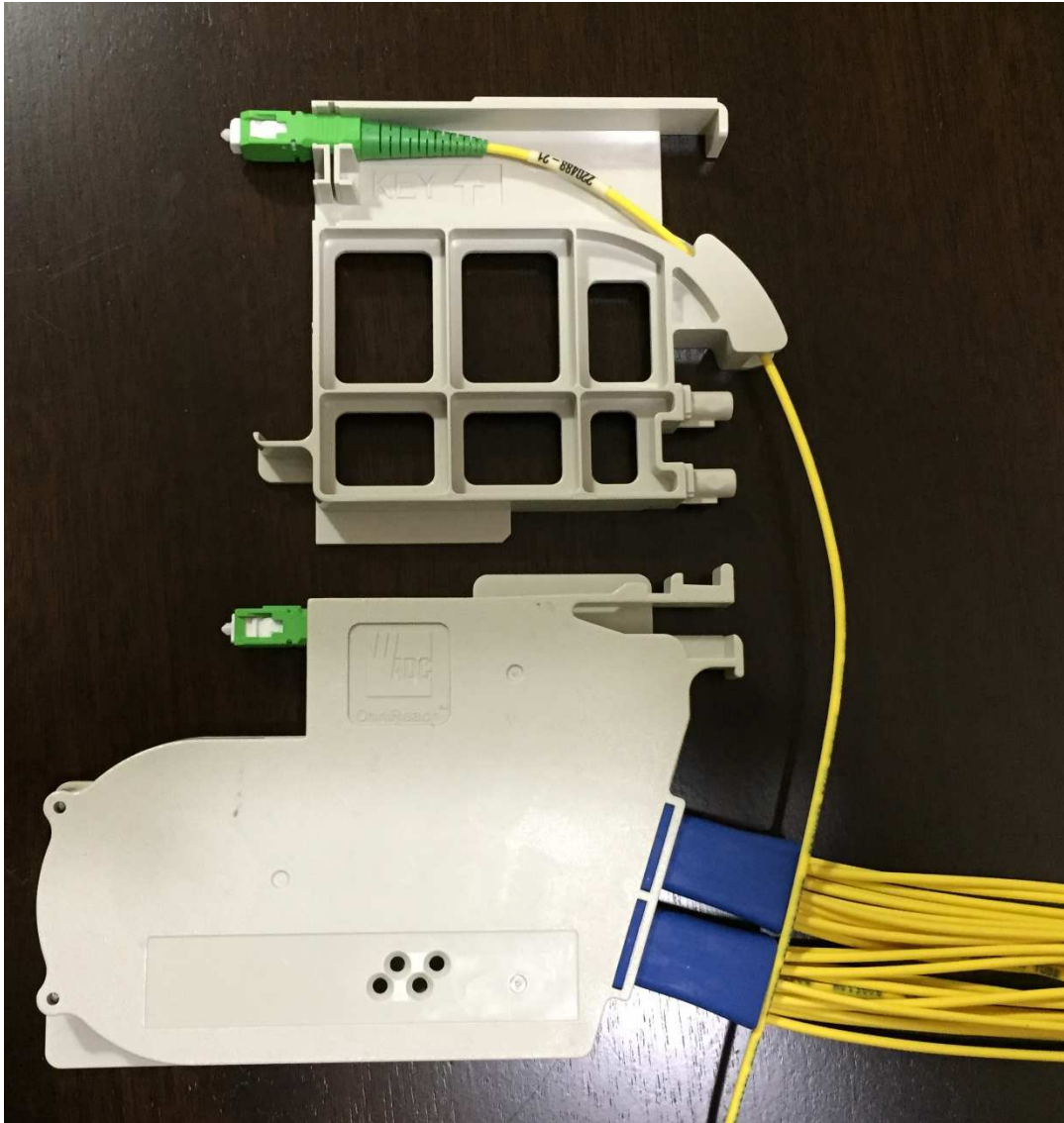


Fiber Distribution Cabinet– Plug-and Play Splitters, CWDM Muxes & DWDM Muxes

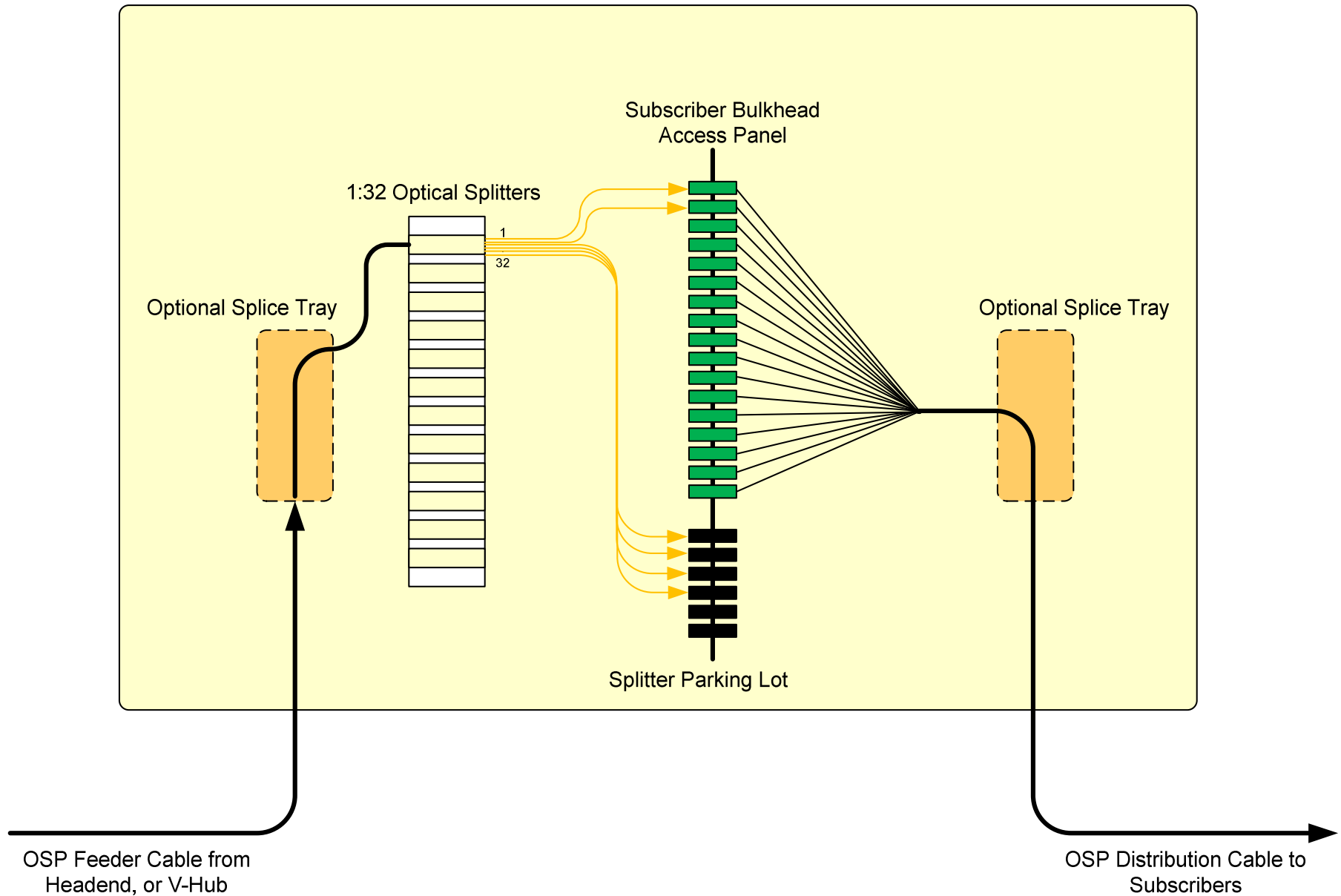
- Industry leading low loss splitter (16.7dB max for 1x32) offers over 6000 feet further reach than industry standard splitters
- Easy snap-in design requires no tools and allows easy deferment of splitter costs (< 5 min installation & customer turn up)
- 2mm pigtailed outputs designed for commonality among all of CommScope's cabinets & distribution Solutions
- Splitter types supported: 1x32, 1x16, 1x8, 1x4, 1x2, and 1x64 are standard (other custom configurations such as dual and 2xN also possible)
- CWDM types supported: 8CH, 10CH and 16CH
- DWDM Types supported: 8CH, 10CH And Coming Soon 20CH And 40CH



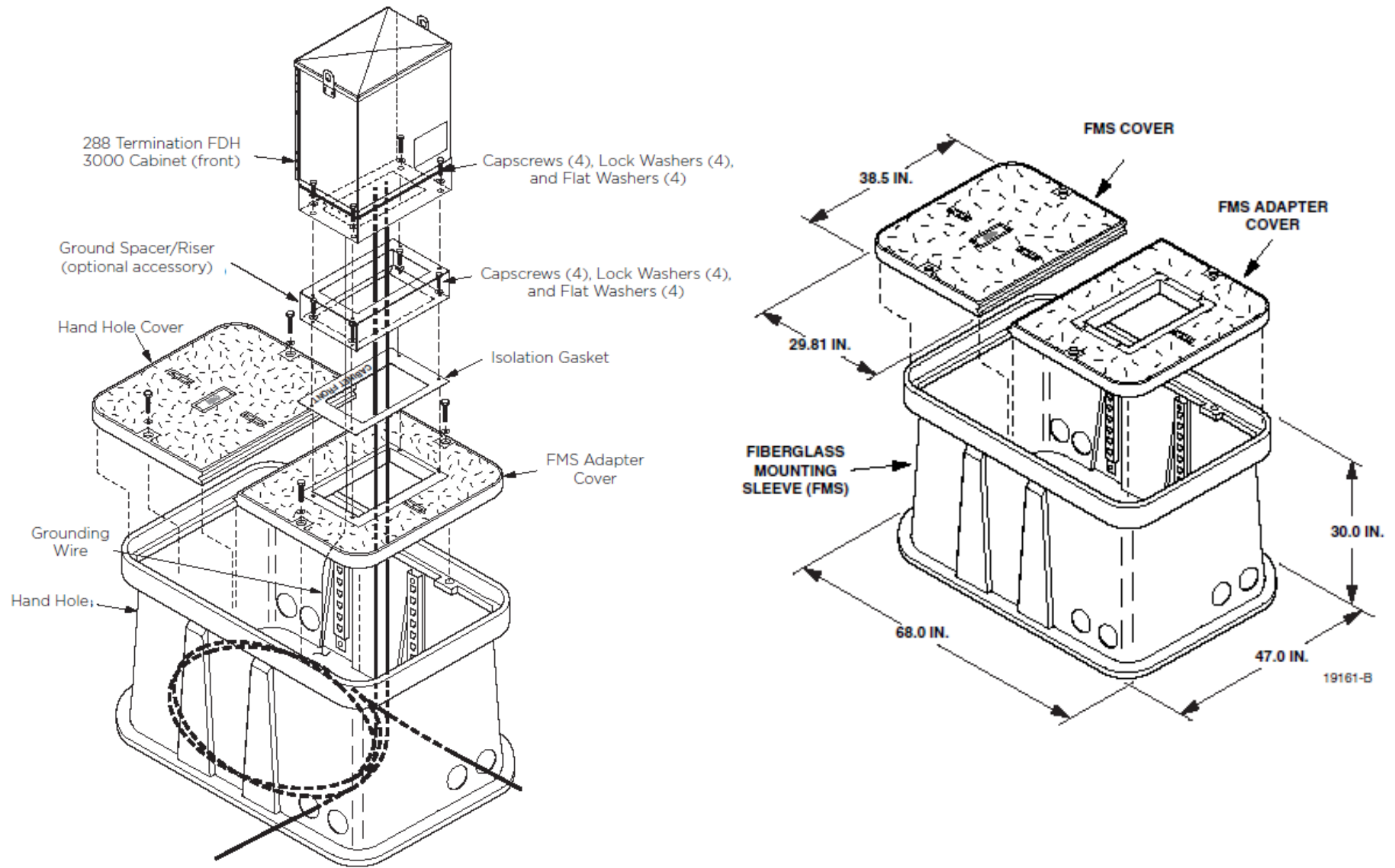
Fiber Distribution Cabinet – Plug-and Play Splitters – Test Access



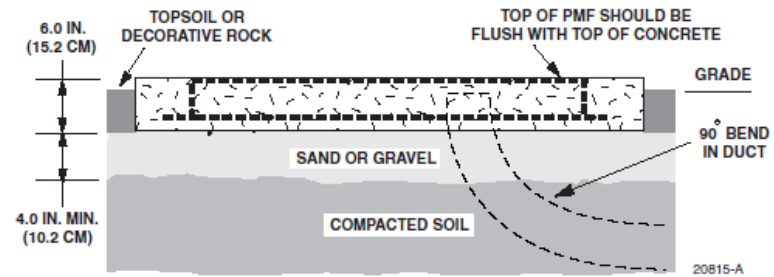
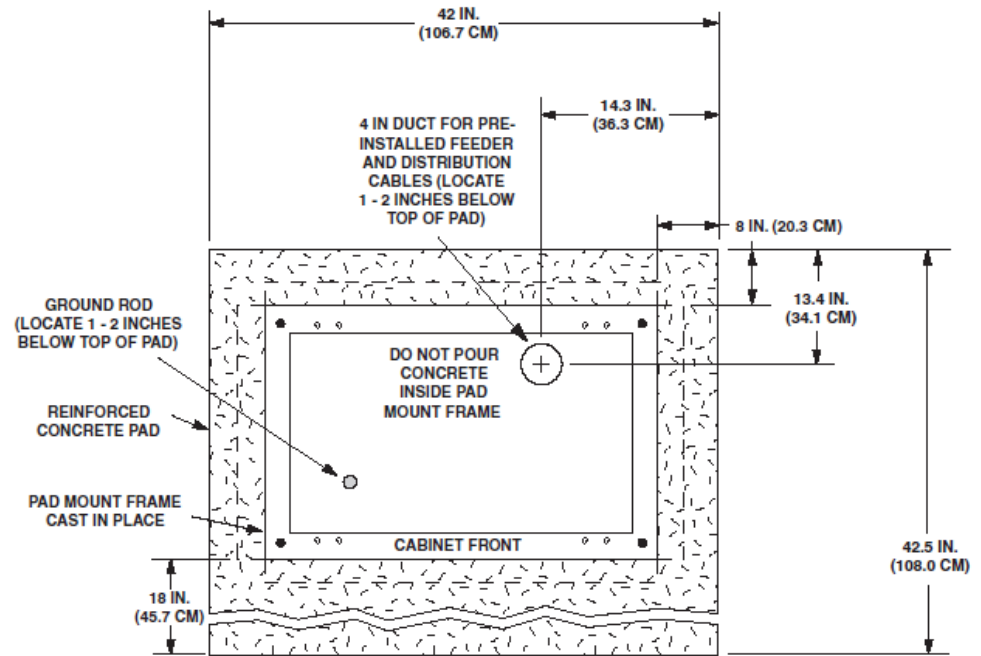
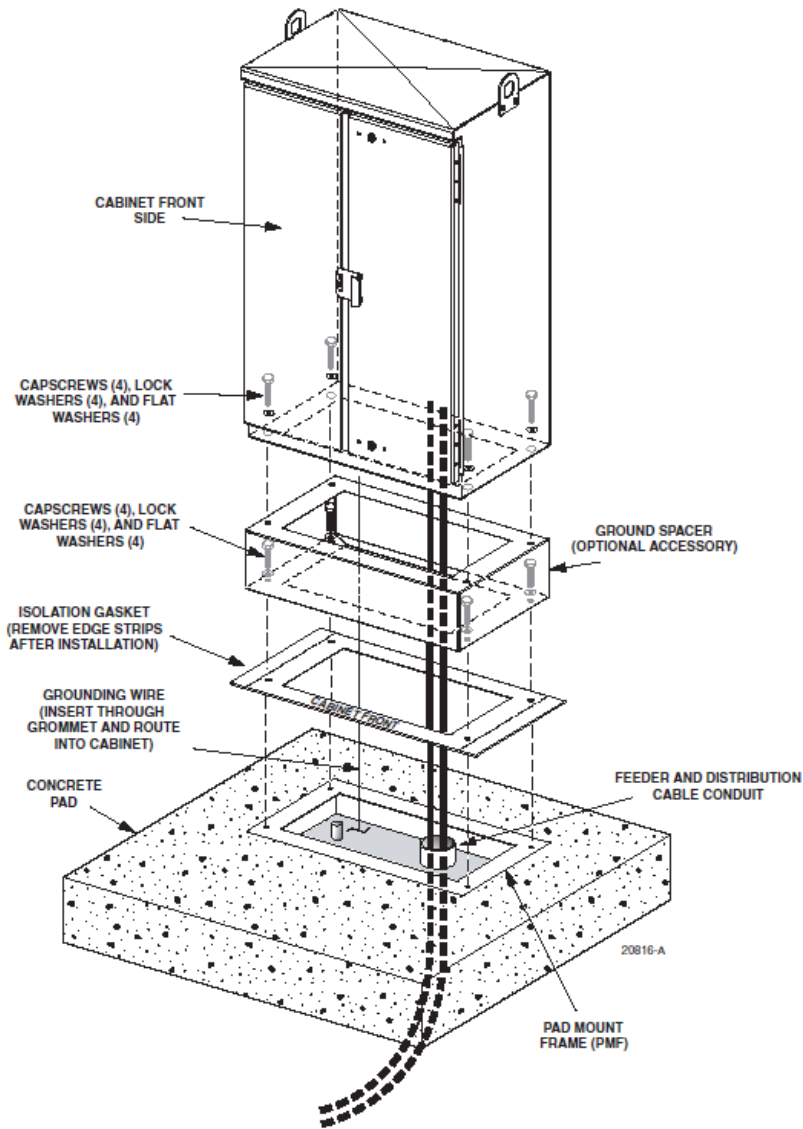
Fiber Distribution Cabinet – Plug-and Play Splitters – Block Diagram



Fiber Distribution Cabinet – Fiberglass Mounting Sleeve (FMS)



Fiber Distribution Cabinet— Mounting the FDC on a Concrete Pad



Fiber Distribution Cabinet – 144F Cabinet Pole Mount



FDC 144 Fiber Cabinet Pole Mounted



Sealed Fiber Distribution Hub (FDH)

SCTE N-CA Tech Days & Vendor Show 041217

Fiber Distribution Cabinet Within Sealed Closure



Features and Benefits

- Extremely Compact/High Capacity Design
 - Scalable up to 288 distribution ports, 12-72 feeder ports. (Unused ports can be used for pass through applications)
- Superior Performance
 - Unsurpassed reliability makes it ideal for aerial and below grade applications
- Environmental Protection
 - Thermoplastic construction provides UV stabilization, flame retardancy, and chemical & impact resistance
- Field Proven Hermetically Sealed Closure
 - Provides air/water tight seal ensuring protection from flooding and fungus
- Re-Enterable/Reusable Shell
 - No re-entry kits or tools required
- Supports Diverse Splitter Module Configurations
 - Standard optical splitters, CWDM's and DWDM's
- Craft Friendly Splitter Module Design
 - Easy to insert and remove without affecting adjacent splitters
- Compatible Mounting Kits (sold separately)
 - Allow for easy strand, pole, pedestal and hand-hole installations

Fiber Distribution Cabinet Within Sealed Closure

Specifications

FDH 4000

Configuration

Access

Height Pole-Mount

Width (Diameter)

Enclosure Weight

(without pedestal, cables, or splitters)

Connectors

Splitter Capacity

Splitter Modules Included

Distribution Port Count

Feeder Fiber Count

F1 Fiber Terminations

Pass-Thru's

Cable Ports

Cable Clamps

Enclosure Rating

FDH Performance

Standard Color

A-size

Below Grade

Removable Dome

28" (72 cm)

9.5" (24 cm)

30 lbs (13.6 kg)

SC or LC

9

0

72 SC / 144 LC

12 - 72

12 - 72

**

3

1

IP68

GR-3121, GR-3125

Black

B-size

Below Grade

Removable Dome

32" (81.1 cm)

9.5" (24 cm)

35 lbs (15.9 kg)

APC or UPC

9

0

144 SC / 288 LC

12 - 72

12 - 72

**

3

1

IP68

GR-3121, GR-3125

Black



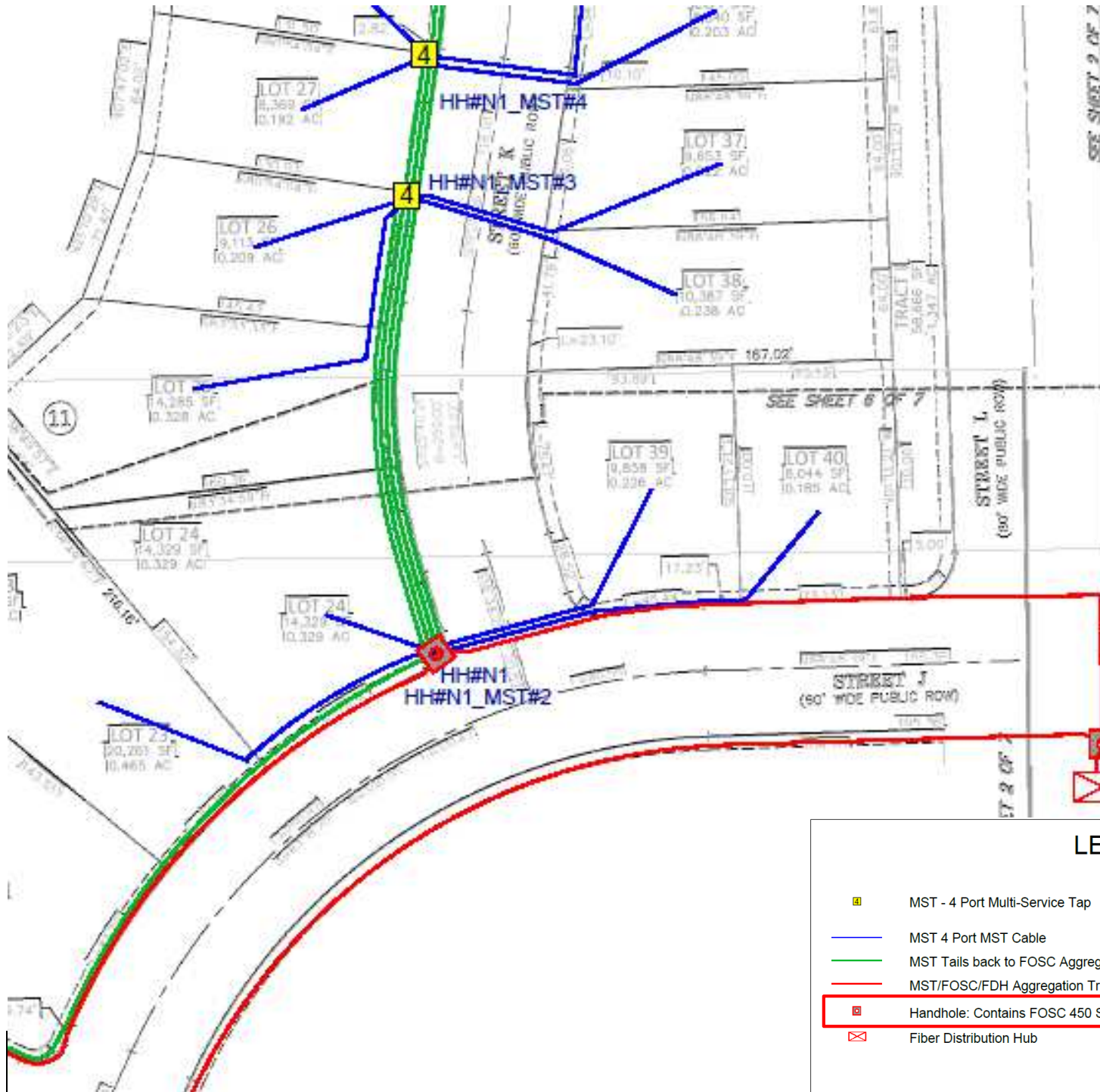
Front View
(Door Open)

**configurable



Outside Plant Solutions

SCTE N-CA Tech Days & Vendor Show 041217



LEGEND

- MST - 4 Port Multi-Service Tap
- MST 4 Port MST Cable
- MST Tails back to FOSC Aggregation Point
- MST/FOSC/FDH Aggregation Trunk Fiber Distribution Cable
- Handhole: Contains FOSC 450 Splice Closure and MST - 4 Port Multi-Service Tap
- ⊗ Fiber Distribution Hub

Fiber Optic Splice Closure (FOSC) – Product Description and Applications

Description:

- FOSC 450 Fiber Optic Splice Closures are a family of 5 fiber optic splice closures for use in all fiber splicing applications in outside plant fiber networks.

Applications:

- Backbone, distribution and FTTX splicing of most all cable types
- All outside plant locations including:
 - Below grade (handholds, manholes, direct buried)
 - Pedestals
 - Pole
 - Aerial (strand, including ADSS applications)



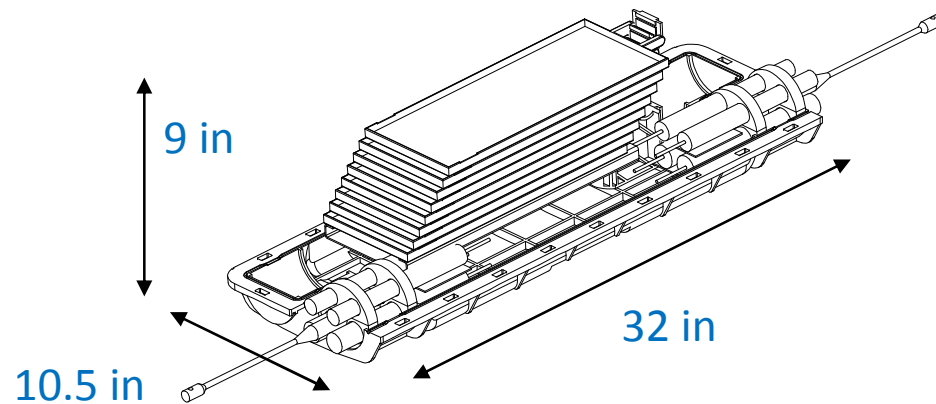
FOSC 450 Splice Closures – Gel Seal Technology

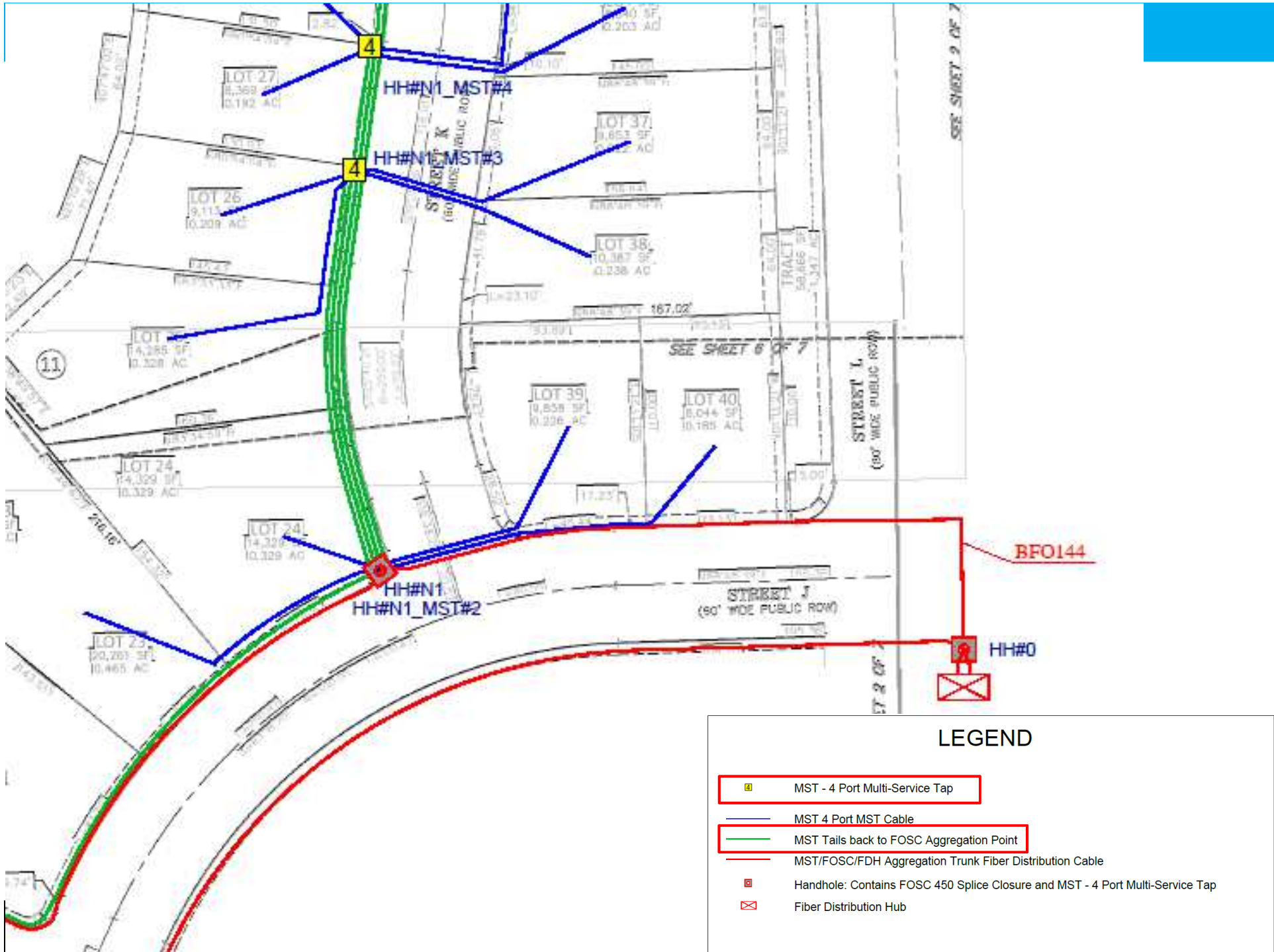
- **Conforms to wide ranges of shapes and size of cable**
- **Gel stays flexible in wide temperature ranges**
- **Gel withstands harsh chemical environments**
- **Cold Sealed...no heat gun required**
 - **FOSC 450 D6**
(432 splice capacity w/basket)
 - **FOSC 450 C6**
(144 splice capacity w/basket)
 - **FOSC 450 B6**
(144 splice capacity w/basket)
 - **FOSC 450 BS**
(B Short version: 96 sp. cap. w/basket)
 - **FOSC 450 A**
(Up to 96 splice capacity)



FOSC 600 Splice Closures – Inline/Butt Splice Closure

- For large fiber count applications...holds up to **1728** fibers
- Single ended (butt) or In-line capability (also field configurable from one to the other)
- Gel cable sealing
- Up to 9 splice trays
- Large loop storage area
- Excellent rehab closure



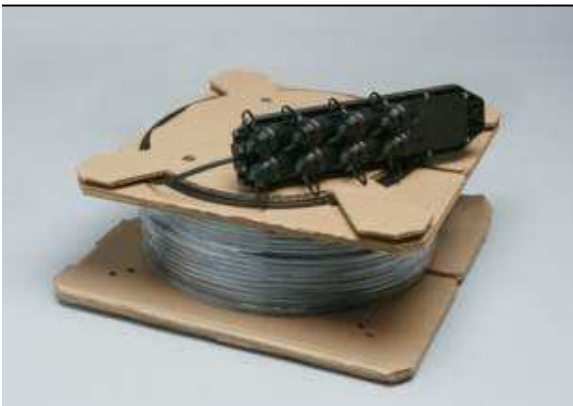


LEGEND

- MST - 4 Port Multi-Service Tap
- MST 4 Port MST Cable
- MST Tails back to FOSC Aggregation Point
- MST/FOSC/FDH Aggregation Trunk Fiber Distribution Cable
- Handhole: Contains FOSC 450 Splice Closure and MST - 4 Port Multi-Service Tap
- ⊠ Fiber Distribution Hub

NAP Summary

- Available Sizes 4, 6, 8, 12
- Standard Lengths 50, 100, 200, 250, 500, 750, 1000, 1500, 2000
- Common 2xN Footprint
- Dielectric-Flat-Loose Tube, Locatable-Flat-Loose Tube, Armored-Round-Loose Tube
- Ships with Universal Mounting Bracket
- Packaging



- $\leq 300'$ coiled
- $\geq 301'$ spooled



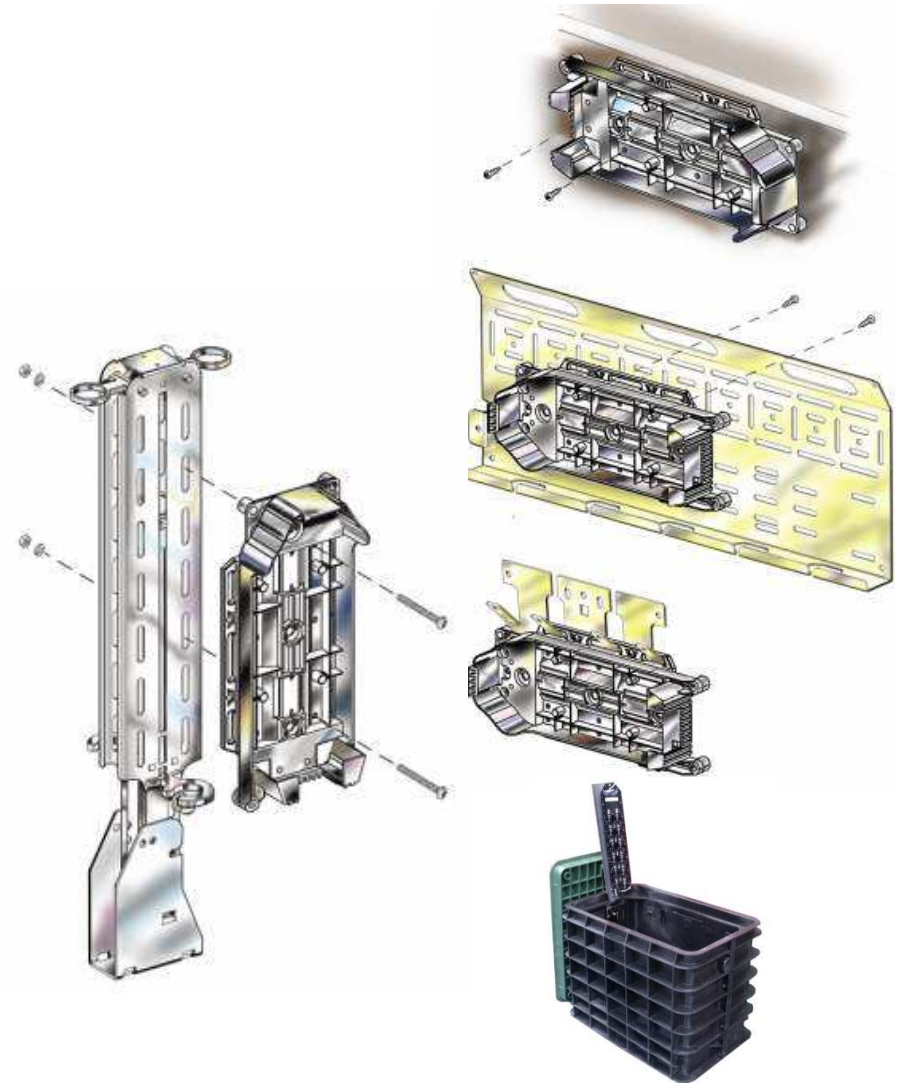
NAP Universal Mounting Bracket Aerial & Pole Installation



OSP Hardened Solutions – Network Access Point Pole/Aerial Mount



NAP Universal Mounting Bracket Pedestal & Below Grade Installation

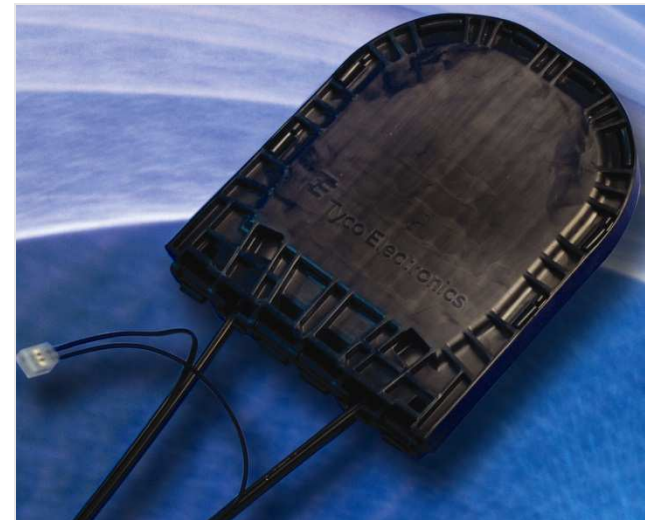
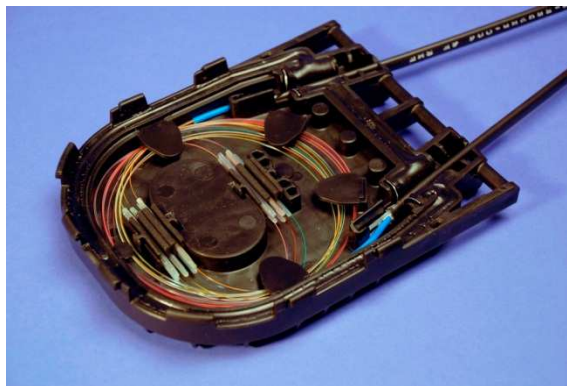


OSP Hardened Solutions – Network Access Point Pedestal/Below Grade Mount



Drop Repair Kit

- Flat drop style cables
- Gel sealing, no encapsulant required
- One in, one out, butt-style configuration
- Large splice capacity; (12) singles, one 12F ribbon or (12) ribbonized fibers
- Small size (7" x 5.7" x 1.25") fits into flowerpot size hand holes
- Above grade, below grade, aerial, or direct buried applications
- Tone wire hardware included (Tel-Splice)
- Hinged closure design for easy access
- No tools needed - quick, clean installation
- Not designed for UL - will not be UL listed



Quick Drop Gel Seal

Gel Drop Seal:

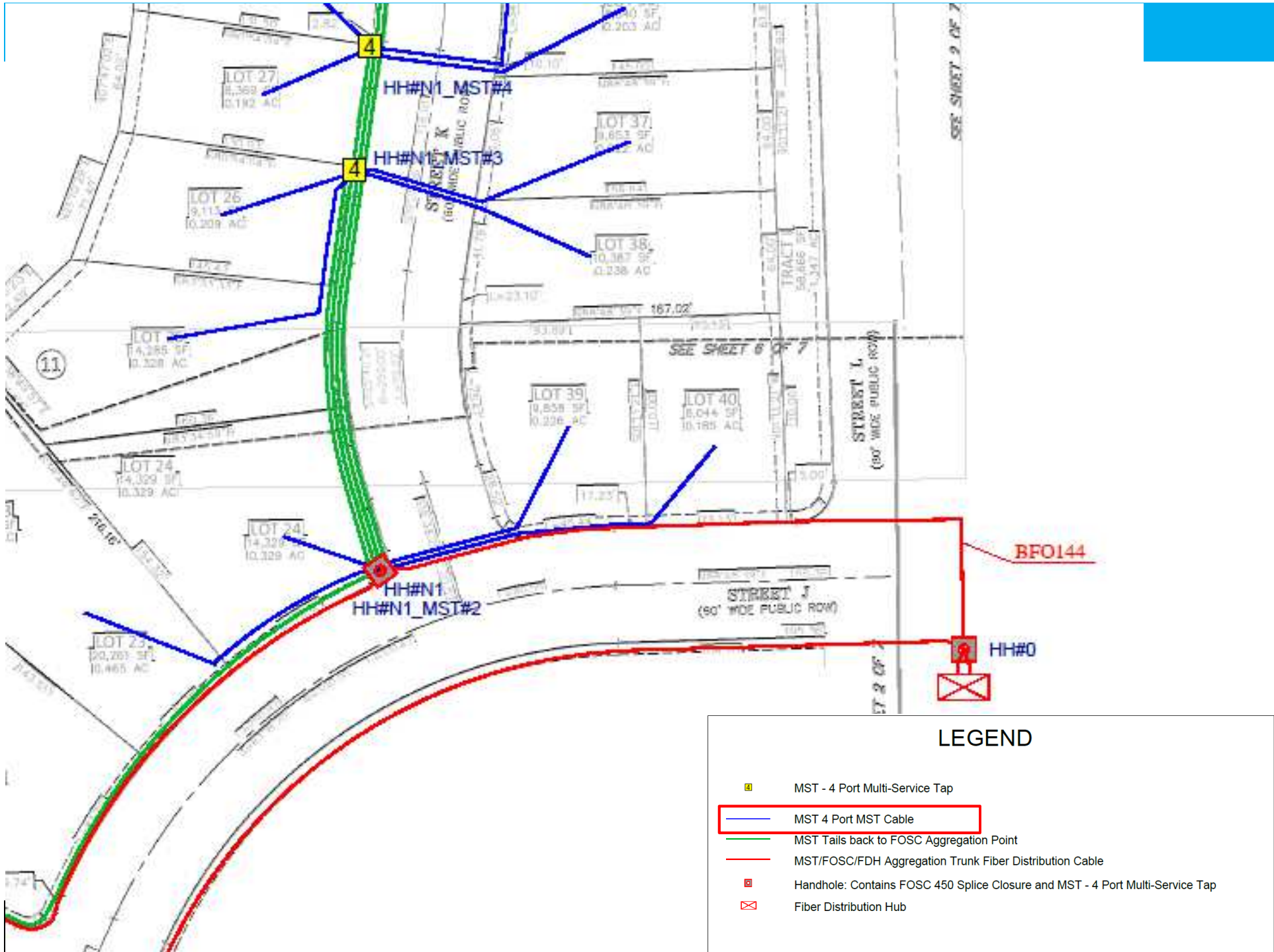
- New flat drop cable sealing accessory for FOSC 450
- Improves FOSC FTTH position



Features of the product

- Multi-flat drop cable seal for FOSC 450 B, B Short, C and D Closures
- More efficient installation of flat drop cable
 - No base removal
- Fewer loose components than other multi-drop kits





LEGEND

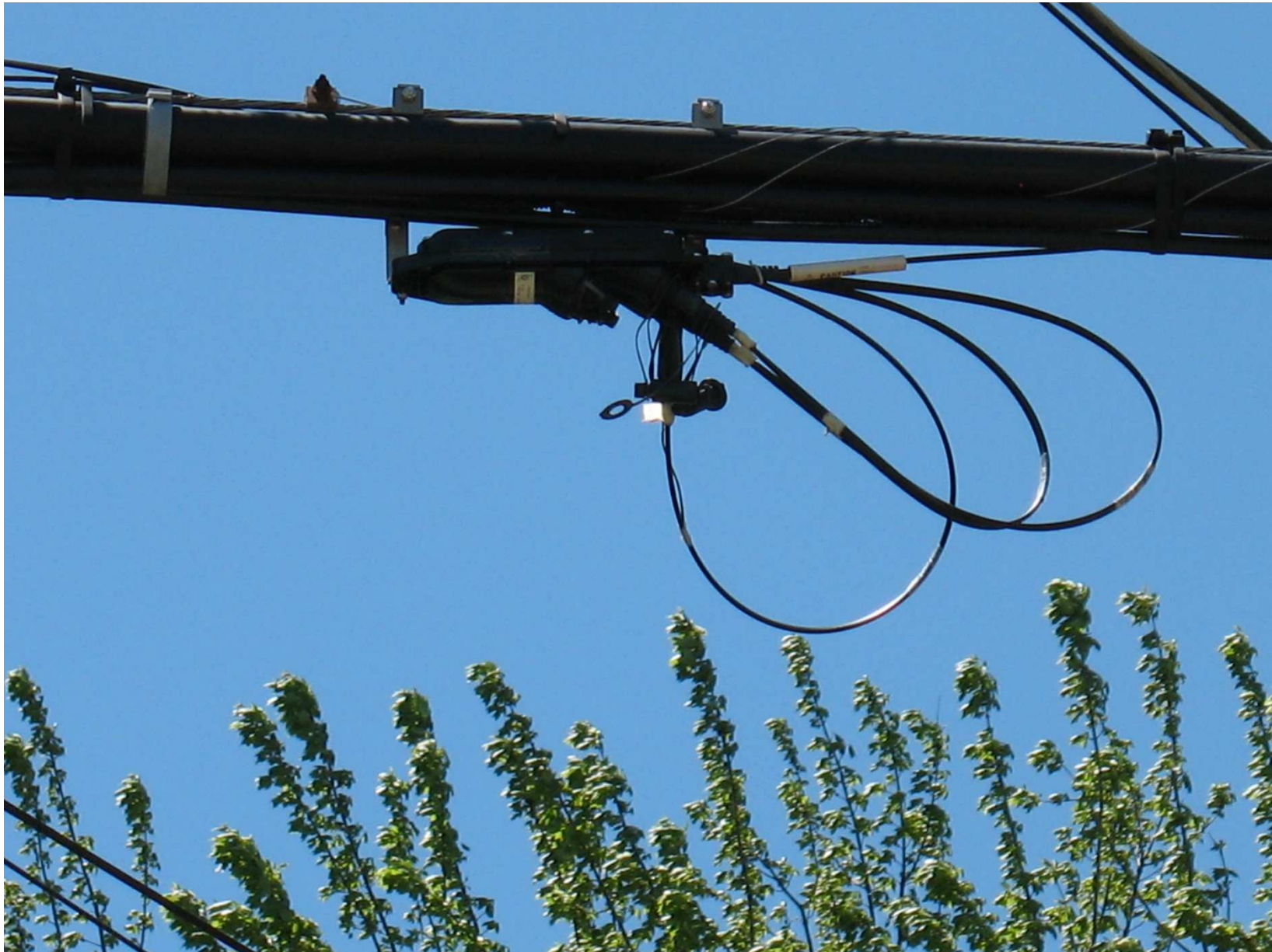
- MST - 4 Port Multi-Service Tap
- MST 4 Port MST Cable
- MST Tails back to FOSC Aggregation Point
- MST/FOSC/FDH Aggregation Trunk Fiber Distribution Cable
- Handhole: Contains FOSC 450 Splice Closure and MST - 4 Port Multi-Service Tap
- Fiber Distribution Hub

OSP Hardened Solutions – Hardened Drop Cables

- Single-fiber, single-mode hardened connector SC/APC drop cable assemblies
- Available with one or both ends connectorized
- Environmentally sealed connector
- Easy connection to hardened adapters on terminals or closures
- Connector can be pulled through 1.25-inch conduit
- Pulling eye on connector cap is designed for 100 lb. maximum pulling tension
- Drop cable designed to meet Telcordia GR-20 requirements
- Dielectric, Tenable and Aerial cable options.



OSP Hardened Solutions – Hardened Drop Cables

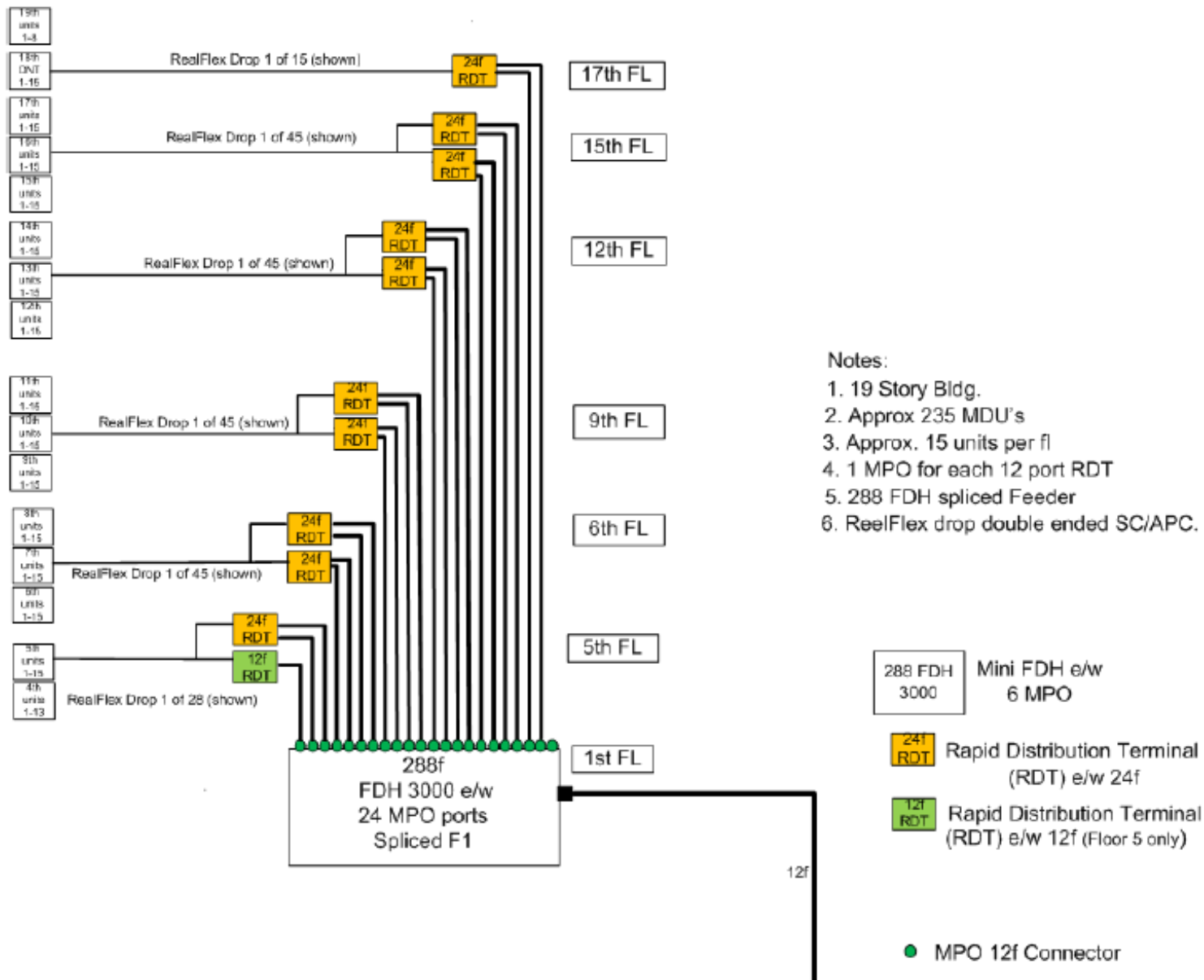




Customer Premises Solutions

SCTE N-CA Tech Days & Vendor Show 041217

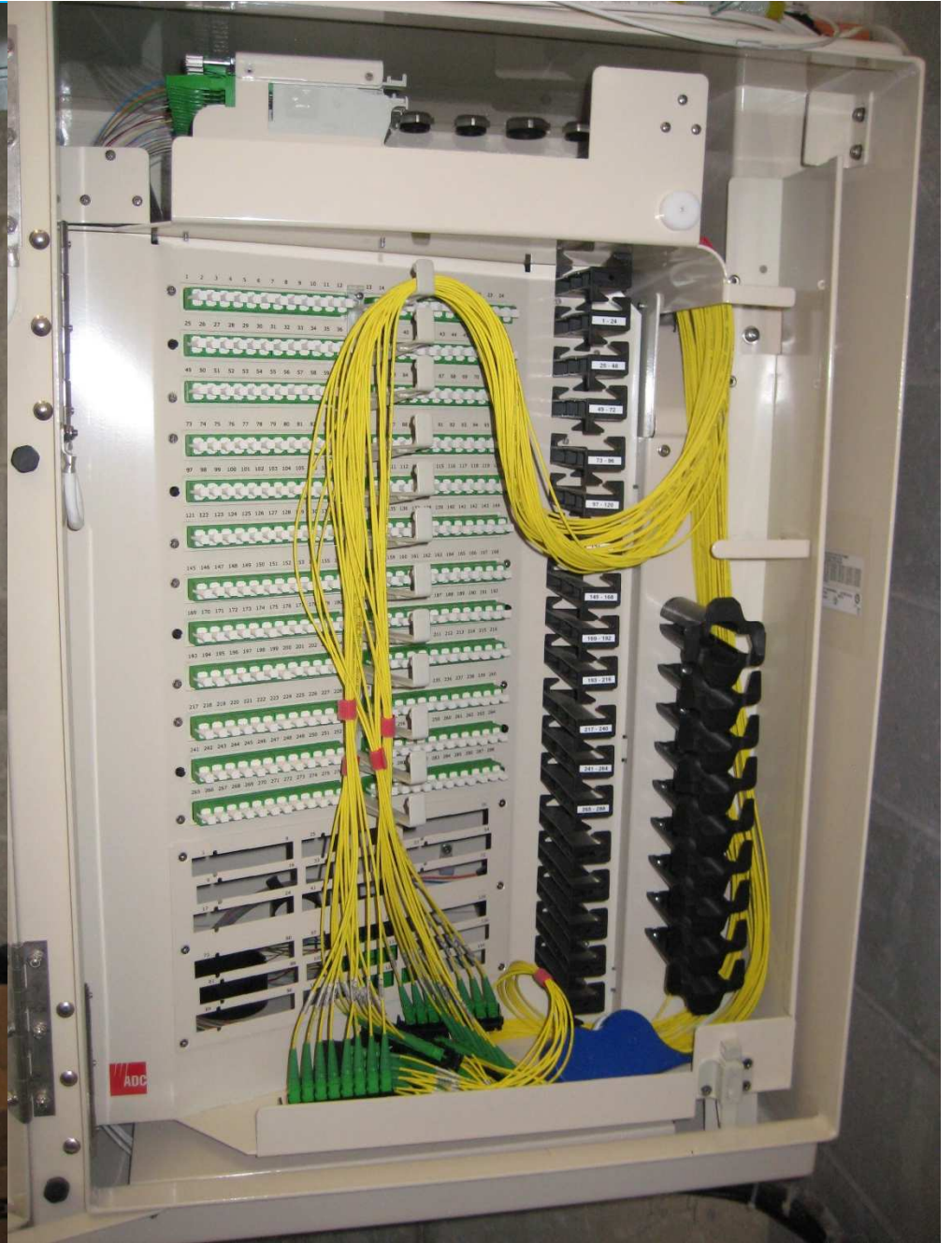
MDU Solutions – 17 Story Building

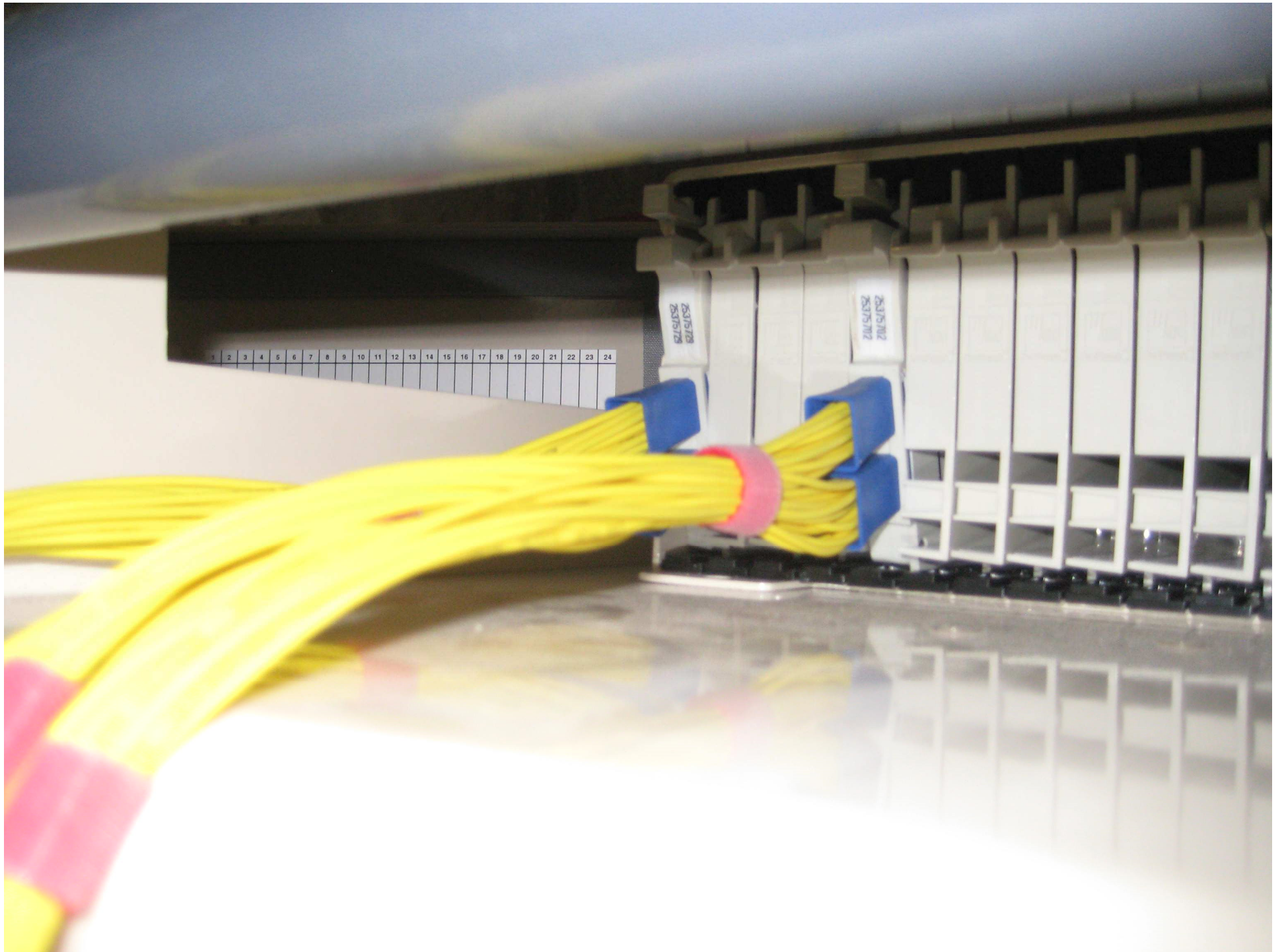


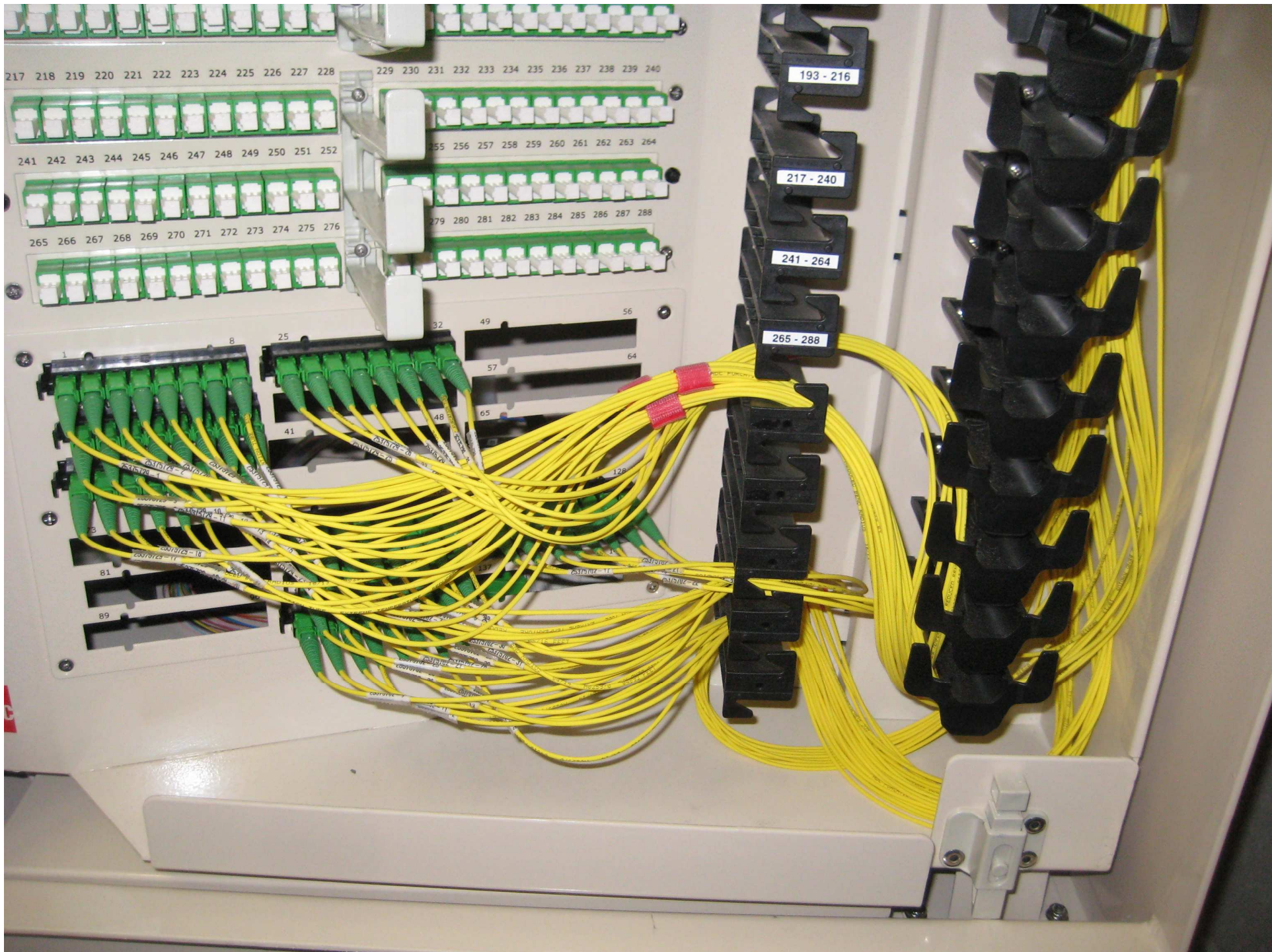
- Notes:
1. 19 Story Bldg.
 2. Approx 235 MDU's
 3. Approx. 15 units per fl
 4. 1 MPO for each 12 port RDT
 5. 288 FDH spliced Feeder
 6. ReelFlex drop double ended SC/APC.

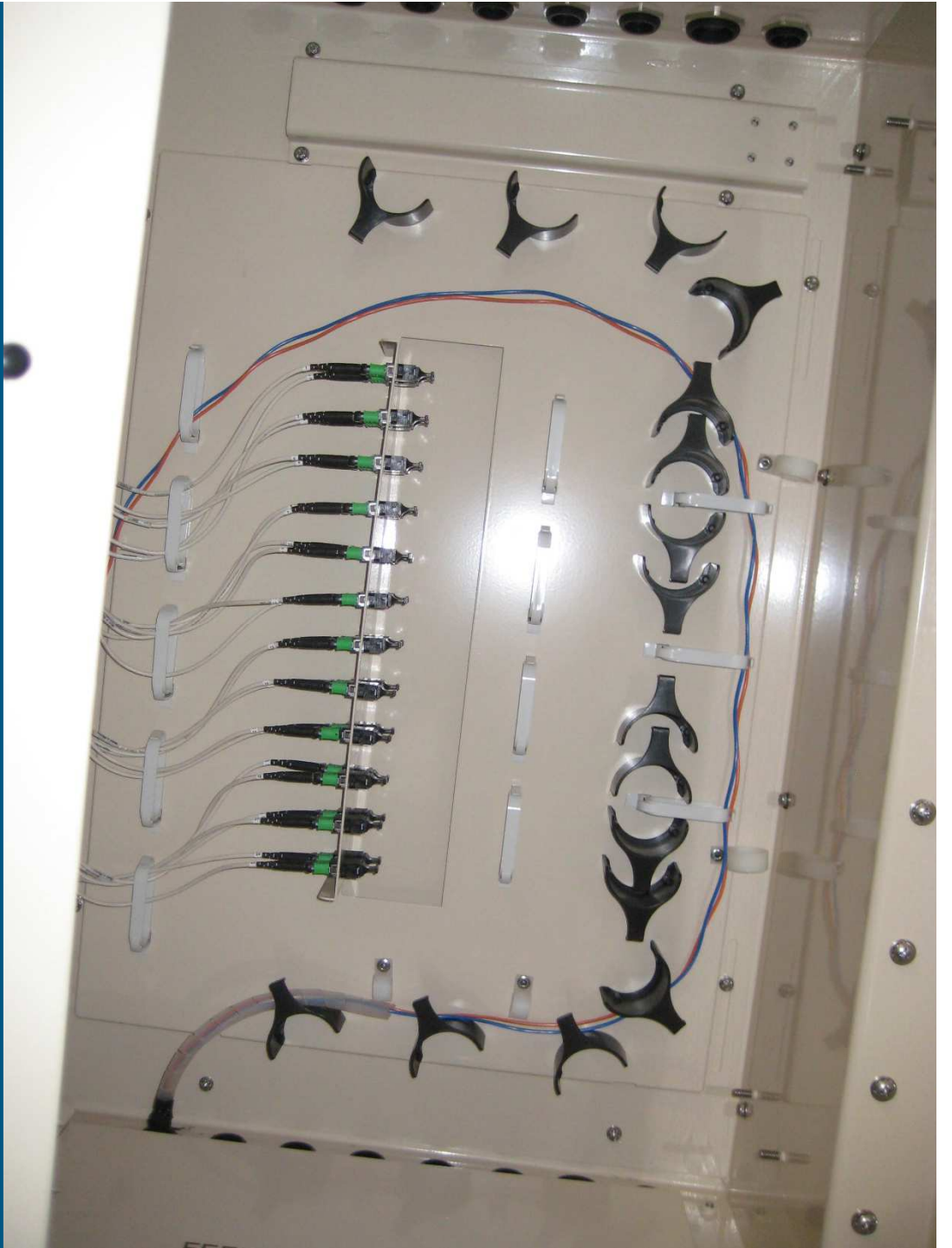
Virtual Hub





















501 505 509 513 517 521
502 506 510 514 518 522
503 507 511 515 519 523
504 508 512 516 520 524

PHYSICAL SECURITY
ALWAYS LOCK THE DOOR
UNAUTHORIZED ACCESS
PENALTY: \$500-\$2500, 1 YEAR

DANGER
FIBER OPTIC CABLES
EMIT LASER RADIATION
WHEN POWER IS APPLIED
DO NOT STARE INTO BEAM
OR POINT AT OTHER PEOPLE

NOTE: THIS UNIT DESIGNED FOR USE
IN REDUCED RISK RADIATION FREE

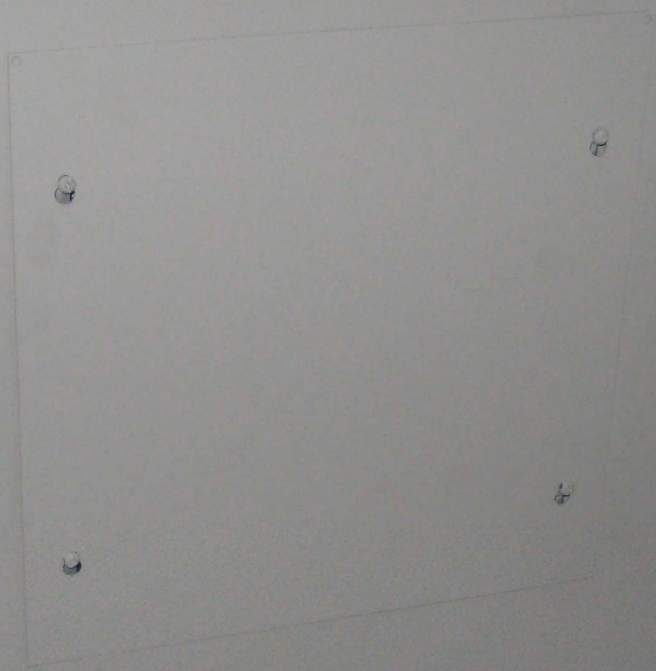
White rectangular power supply unit with a single screw on the front panel.

Bundle of black cables routed through a hole in the wall, secured with black caps and zip ties.

White electrical outlet with a white cable plugged into it, mounted on the wall.

White cable with a label that reads '403' and '400'.







CLASS 1 LASER PRODUCT
Complies with 21 CFR 1040.10 and 1040.11
except for dividers pursuant to Laser Notice
No. 99, dated June 24, 2002

CP8015U-02-00
CP8015 DCA5973

+12VDC 750mA
POWER INPUT

+12VDC 750mA
POWER IN

OK
ALARM

NETWORK

SDU RfOG CPE

aurora
NETWORKS

Recycled
Recall Guard Shield
FT4 318065

Recycled
Recall Guard Shield
FT4 318065



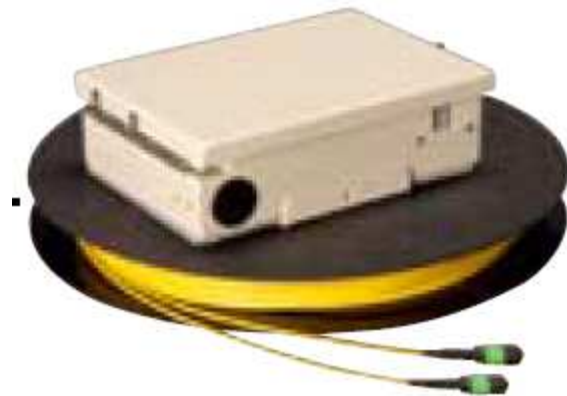
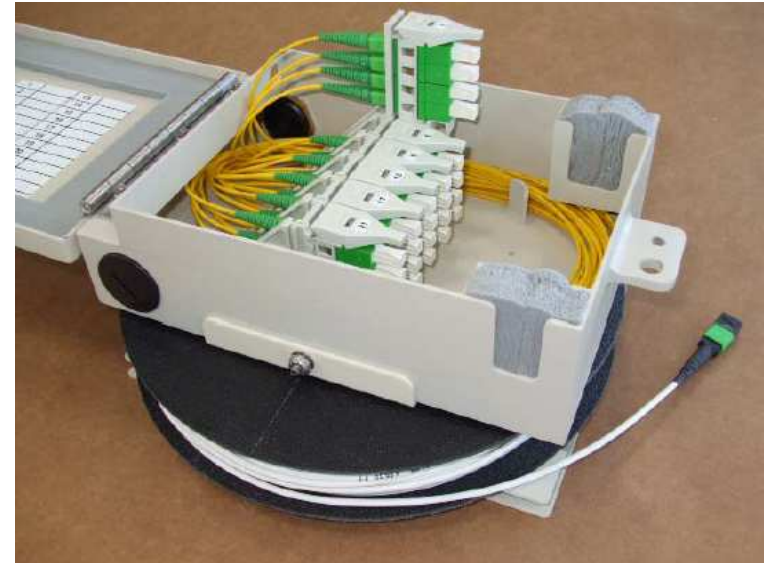
Mini – RDT (Rapid Distribution Terminal)

- Compact size: 7.75”h x 5.5”w x 2.25”d
- Up to 100 Feet of built-in Slack storage
- Uses RapidReel technology
- Plug & play MPO stub connections (no splicing)
- 4-port to 12-port compatible
- Security screw
- Two cable exit locations (left and down sides)



24Fiber Rapid Distribution Terminal (RDT)

- Provides flexibility in deployment with various size terminals, cable types and standard cable lengths
- Reduces overall lead-time and installation process
- Miniaturized cable requires less space for slack storage of excess fiber cable
- RapidReel technology allows for easy payoff of MPO stub
- Patented break-away spool flanges reduce slack storage size to within the enclosures footprint
- Designed for indoor use
- Utilizes Reduced Bend Radius Fiber
- Designed to meet NEMA-12 requirements



ReelFlex 3 Fiber Drop Cable

Features and Benefits

- Fiber bend radius as small as 7.5 mm without changing cable characteristics
- Greatly reduces risk to bend induced insertion loss created during installation
- Indoor/Outdoor, Plenum and Riser cable options available
- 900 micron buffer coating strips easily in one pass to save on installation time
- Rugged 3 mm cable jacket construction
- Cable maintains its flexibility even in extreme cold temperatures
- G.657 Table A and B compliant
- Two cable configurations available: connectors on both ends or connector on one end
- Spooling options: end with connector pulled first or end without connector pulled first
- Ivory cable color helps distinguish cable in the field



COMMScope®

Thank You

Craig Fleming