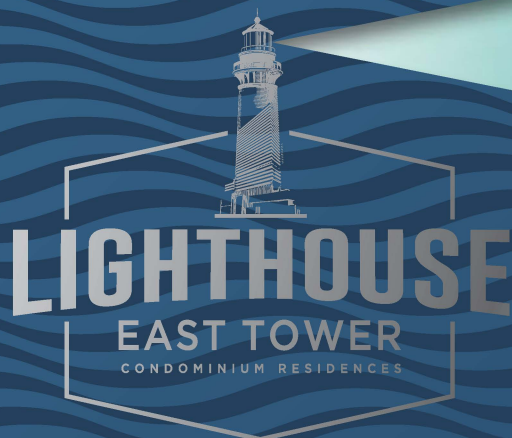


BENCHMARK
SIGNATURE REALTY INC.,
BROKERAGE

宏地
基產

BENCHMARK SIGNATURE REALTY INC BROKERAGE
1020 DENISON STREET UNI 113 MARKHAM ON
TEL 905.604.2299 FAX 905.604.0622
WWW.BENCHMARKSIGNATUREREALTY.COM





**LIVE, WORK, PLAY,
LEARN, CREATE**



A WATERFRONT VISION THAT'S LIGHT YEARS AHEAD

THE DANIELS CORPORATION HAS BEEN AT THE CUTTING EDGE OF CITY BUILDING FOR OVER THREE DECADES, WITH AWARD-WINNING, MASTER-PLANNED COMMUNITIES SUCH AS THE REGENT PARK REVITALIZATION IN TORONTO'S DOWNTOWN EAST, TIFF BELL LIGHTBOX ALONG WITH FESTIVAL TOWER AND CINEMA TOWER IN THE ENTERTAINMENT DISTRICT, NY TOWERS IN TORONTO, MISSISSAUGA CITY CENTRE, AND DANIELS ERIN MILLS. BUILDING ON OUR GREAT LEGACY AND THE PIONEERING SPIRIT OF OUR FOUNDER JOHN H. DANIELS, WE ARE PROUD AND EXCITED TO BE CREATING THE GATEWAY TO TORONTO'S EAST BAYFRONT WITH A NEW MIXED-USE, MASTER-PLANNED COMMUNITY: DANIELS WATERFRONT - CITY OF THE ARTS.

Daniels Waterfront - City of the Arts, a 1.3 million square foot, live-work-play-learn-create community that will change Toronto's waterfront forever, bringing new vitality to the East Bayfront. Led by cutting-edge organizations like Artscape, George Brown College, and OCAD University that will soon have space here, a new digital arts and cultural renaissance has emerged. Inspired by arts and design, **Daniels Waterfront - City of the Arts** will offer a diverse array of cultural components, masterly woven together through new residences, offices, retail, and academic institutions. With nearby parks, trails, trendy shops, cultural venues and, of course, the water's edge, **Daniels Waterfront - City of the Arts** is the leading light at Toronto's waterfront.



A NEW LEADING LIGHT AT TORONTO'S WATERFRONT

Introducing **Lighthouse East Tower**, your opportunity to live in the highly successful **Daniels Waterfront - City of the Arts**. With sweeping forever views of the lake, the 36-storey tower will be more than just a residence for the discerning urbanite...it's destined to become a bold landmark on the waterfront skyline. Connected to the lake and the downtown core, **Lighthouse East Tower**

will rise atop a two-storey podium featuring wide expanses of glass, punctuated by an undulating pattern, mimicking the waves of Lake Ontario and complementing the surrounding architecture of **Daniels Waterfront - City of the Arts**. Its presence will be a nod to the future of this emerging neighbourhood and a bold, new community at the gateway to Toronto's East Bayfront.

Illustration is artist's concept. E. & O.E.



YOUR SWEET SPOT ON THE WATERFRONT

LOCATED DIRECTLY ACROSS FROM DANIELS WATERFRONT - CITY OF THE ARTS AND DISTINGUISHED BY ITS ICONIC PINK UMBRELLAS, CANDY-STRIPED GRANITE ROCK FORMATION AND WHITE SANDY BEACH, CANADA'S SUGAR BEACH IS A MUST-SEE DESTINATION ON THE WATERFRONT.

Canada's Sugar Beach draws thousands of Torontonians and visitors from across the globe every year.

Claude Cormier + Associates – the same landscape architects who gave us **Canada's Sugar Beach** – are designing **Sugar Beach North**, a vibrant, tree-lined, public amenity within **Daniels Waterfront - City of the Arts**. With beautiful views of the lake and the beach to the south, **Sugar Beach North** will be a charming urban space for outdoor gatherings, music, dance, and celebration.

SUGAR BEACH NORTH

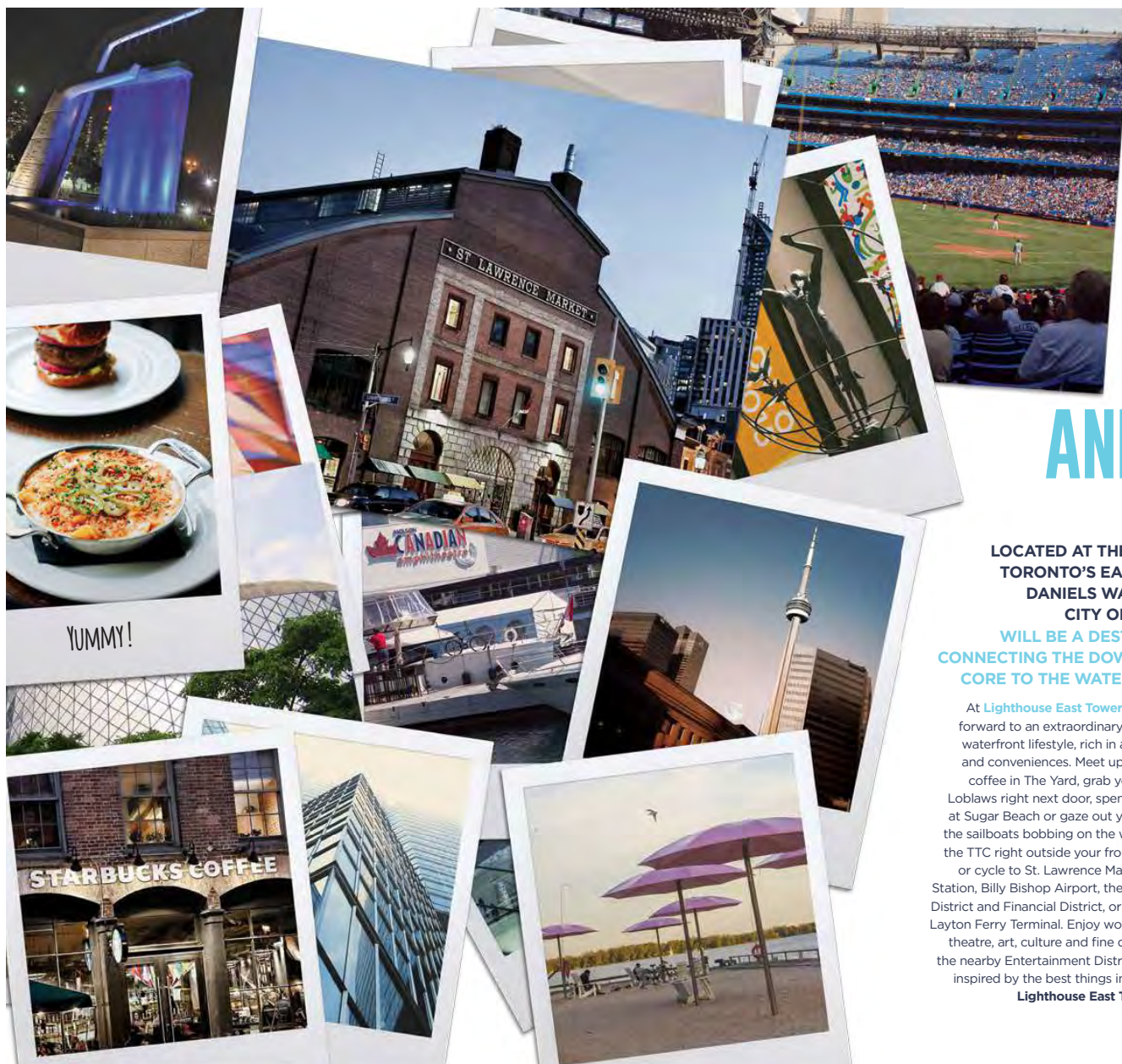




THE YARD, A VIBRANT OUTDOOR LIVING ROOM

RUNNING THROUGH THE HEART
OF DANIELS WATERFRONT - CITY OF
THE ARTS WILL BE THE YARD

The Yard will be the waterfront's new pedestrian hot spot, perfect for hanging out or catching up on work or school, shopping, dining, or savouring your favourite café latte. Unique paving, large lush planter boxes, and rustic, outdoor seating will invite you to experience the pulse at **Daniels Waterfront - City of the Arts**. Lined with cafés, restaurants, bistros and boutique retail, **The Yard** will offer a truly vibrant outdoor experience.

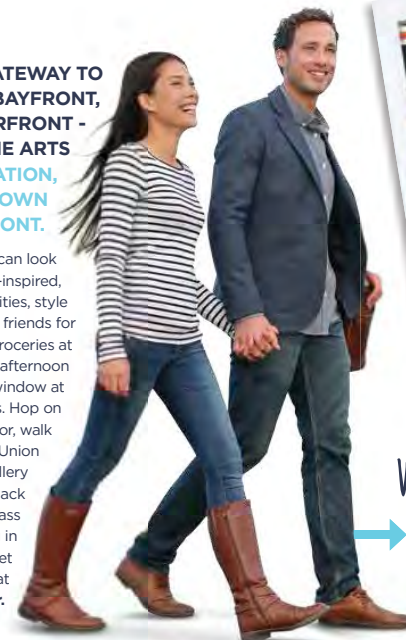


CONNECTED TO THE CITY AND THE WATER

LOCATED AT THE GATEWAY TO
TORONTO'S EAST BAYFRONT,
DANIELS WATERFRONT -
CITY OF THE ARTS

WILL BE A DESTINATION,
CONNECTING THE DOWNTOWN
CORE TO THE WATERFRONT.

At **Lighthouse East Tower** you can look forward to an extraordinary, arts-inspired, waterfront lifestyle, rich in amenities, style and conveniences. Meet up with friends for coffee in The Yard, grab your groceries at Loblaws right next door, spend an afternoon at Sugar Beach or gaze out your window at the sailboats bobbing on the waves. Hop on the TTC right outside your front door, walk or cycle to St. Lawrence Market, Union Station, Billy Bishop Airport, the Distillery District and Financial District, or the Jack Layton Ferry Terminal. Enjoy world-class theatre, art, culture and fine dining in the nearby Entertainment District. Get inspired by the best things in life at **Lighthouse East Tower**.



TRANSIT SCORE

96



BIKE SCORE

94

WALK SCORE

97



Scores noted are approximate. E. & O.E.





DANIELS IS CHANGING THE WATERFRONT FOREVER

Lighthouse Tower Condo Residences

1. East Tower Lobby Entrance
2. 3rd Floor Shared Terrace
3. 3rd Floor Gardening Plots
4. Zen Garden
5. Residential Parking Entrance
6. Lighthouse West Tower

Community Amenities

7. The Yard
8. Sugar Beach North

130 QQE Office Condos

9. West Tower
10. East Tower
11. Commercial Parking Entrance
12. 9th Floor Terrace
13. Office Lobby Entrance

Landscape design concept is for illustration purposes only and is subject to change without notice due to municipal and other regulatory approvals. Illustrations are artist's concept. E & O.E.



LOBBY ENTRANCE



MAKE THE RIGHT FIRST IMPRESSION

Welcome to an address that says you've arrived. Through the entrance off of Richardson Street, you'll find a dramatic, gallery-inspired lobby that sets the tone for **Lighthouse East Tower** – open, stylish, and inviting. Your 24-hour concierge will be there to not only greet you and your guests, but offer the ultimate in convenience and at-home resident service. This is what coming home in style feels like.



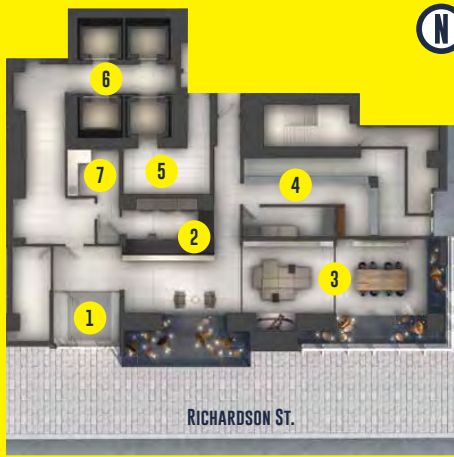
EXPERIENCE
HOMECOMING
IN A NEW LIGHT

Illustrations are artist's concept. E. & O.E.

With **Lighthouse East Tower**, you don't just come home, you make a distinguished entry. The elegant **Lobby**, designed by renowned interior design firm **Cecconi Simone**, will embrace you with style and panache. Like walking into your own personal gallery, you'll be welcomed home by custom art niches framed by soaring ceilings, chic furnishings, and comfortable lounge spaces. Take a breather... you're home.

THE LOBBY

- | | |
|-------------------|-------------------|
| 1. Lobby Entrance | 4. Mail Room |
| 2. Concierge | 5. Move-in Room |
| 3. Art Lounge | 6. Elevators |
| | 7. Administration |



THE SPOTLIGHT CLUB ON 3

THE SPOTLIGHT CLUB ON 3

A CLUB TO INSPIRE YOUR SENSES

Take your senses on an extraordinary journey - the amenity spaces at **Lighthouse East Tower** are anything but ordinary. Welcome to the **Spotlight Club**. A full complement of indoor and outdoor amenities on two levels to kick-start your pursuit of life, leisure, and happiness. Take your athletic regime to a whole new level - head over to the **Spotlight Club on 3** where the **Xtreme Fitness Centre** will put your current gym to shame.

3rd Floor Interior

1. Xtreme Fitness Centre/
Fitness Coordinator
- A. Weight Resistance Zone
- B. Yoga/Pilates Zone
- C. Cardio Zone
- D. Stretch Zone
- E. Dance Zone
2. Theatre
3. Arts & Crafts Studio
4. Garden Prep Studio

3rd Floor Exterior

5. Shared Tennis/
Basketball Court
6. Community
Gardening Plots



PUSH YOUR LIMIT



**THE SPOTLIGHT CLUB ON 3
THIS IS WHERE YOU WILL FIND
THE XTREME FITNESS CENTRE,
A STATE-OF-THE-ART FACILITY
TO HELP YOU STAY IN TOP
PHYSICAL SHAPE**

From a brisk session on a treadmill to an extreme full-body workout, you'll have all the latest cardio, aerobic and weight equipment to put a five-star health club to shame. Whether you're into box jumps and kettle bells or vinyasa, strength training or cardio endurance, body weights or barbell weights - the **Xtreme Fitness Centre** takes physical fitness and endurance to extreme limits.

LET'S TAKE IT OUTSIDE

If outdoor sports are your thing, then **Daniels Waterfront - City of the Arts** is for you. The **Outdoor Tennis/Basketball Court** is the perfect venue to shoot hoops or "ace" your serve. Challenge your buddy to a one-on-one at the basketball net or smash one down the line to make it game,

set and match. And for those with a green thumb, the **Community Gardening Plots** offer a chance to grow your passion. Whether it's seasonal flowers, vegetables, organic herbs or tulip bulbs, you will find everything you need to dirty your hands while cleansing your soul.

THE
SPOTLIGHT
CLUB
ON
3



GET YOUR GREEN THUMB ON



BASKETBALL TIME!

Illustration is artist's concept. E. & O.E.



THE
SPOTLIGHT
CLUB
ON
3

The Arts & Crafts Studio is the ideal canvas for expressing your creative side. Draw, paint, sculpt...the possibilities are endless.

UNLEASH YOUR Creativity

A close-up of a paintbrush with a black handle and a wooden head, resting on a pink surface.

Three smaller images showing artists in action: a woman painting a canvas, a close-up of many colorful paint pots, and a woman sculpting a white bust.

THE SPOTLIGHT CLUB ON 11

WHEN IT'S TIME TO SOCIALIZE
WITH FRIENDS AND FAMILY,
HEAD OVER TO
THE SPOTLIGHT CLUB ON 11

Enjoy incredible views and a great ambience. The stylishly furnished **Party Room** comes with a stone bar, catering kitchen and enough room for everyone to party the night away. This space has exclusive access to a terrace with BBQs to enjoy on warm summer evenings and a cozy outdoor fireplace for wintery nights under the stars. Plus, the **Zen Garden** with its sculptural rocky outcropping makes an ideal backdrop for great selfies with friends.

Illustrations are artist's concept. E. & O.E.



11th Floor Interior

1. Appliance Sharing Kitchen
2. Party Room/
Catering Kitchen
3. Fireside Lounge
4. Social Club

11th Floor Exterior

5. Party Room Terrace
6. BBQ Terrace
7. Zen Garden

Chill with your buddies in the **Social Club**, a cool trendy spot featuring a projector screen with ample seating. There's also the **Fireside Lounge** with access to the **BBQ Terrace** for you to relax after a day in the city. Like to cook up a storm? Give in to your culinary passion in the innovative **Appliance Sharing Kitchen**, a remarkable new amenity where you can take advantage of cooking seminars, training and shared appliances.

THE
SPOTLIGHT
CLUB
ON
11



YOUR
SOCIAL ZONE

AN OUTDOOR OASIS

Out here, the mood is mellow, the ambience chic and contemporary. Welcome to the **Zen Garden**, your outdoor haven in the city. Centre mind, body and spirit, entertain friends and family or enjoy your solitude in this urban oasis, glowing with the warmth of an outdoor fireplace.

THE
SPOTLIGHT
CLUB
ON
11

ZEN GARDEN

Illustration is artist's concept. E & O.E.



A FRESH URBAN AESTHETIC

Urban style – two words that describe the cool, modern interiors at **Lighthouse East Tower**. Enjoy spacious living areas with great views, expansive windows, stylish modern kitchens and gorgeous ensuites. City living has never been so exhilarating.

Photographs are from an existing Daniels' suite. Finishes may not be exactly as shown.

**LIGHTHOUSE EAST TOWER
BLENDS SUSTAINABLE URBAN
LIVING WITH A HOST OF GREEN
ENVIRONMENTAL FEATURES.**



URBAN LIVING REIMAGINED

The Daniels Corporation has been a trailblazer in actively incorporating urban agriculture opportunities into our new home communities across the Greater Toronto Area.

Providing everything from gardening plots and edible landscaping to container gardening and even farmers' markets - urban agriculture is a wonderful way for residents to come together, establish a deeper sense of community and connect to the earth in an interactive way.

Daniels Waterfront - City of the Arts showcases our commitment to an environmentally sustainable and healthy lifestyle with an array of community gardening plots located on the 3rd floor terrace. To help you exercise your green thumb and refine your gardening techniques, we provide workshops and seminars in collaboration with organic Ontario farmers, to ensure you maximize the opportunity to grow herbs, flowers, vegetables and spices. Daniels makes urban living fresh, healthy, and delicious!

SIGNIFICANT ENERGY SAVINGS

- Energy Star® appliances use significantly less energy and last longer
- Low energy, high efficiency lighting in all common areas
- Double paned Low E glass windows save on winter heating and summer cooling
- Building Automation System uses a cutting edge network of sensors to operate the main building system only when needed

CONSERVING NATURAL RESOURCES

- Rainwater harvesting for better use of our water resources
- Low flow plumbing fixtures and dual flush toilets to reduce consumption

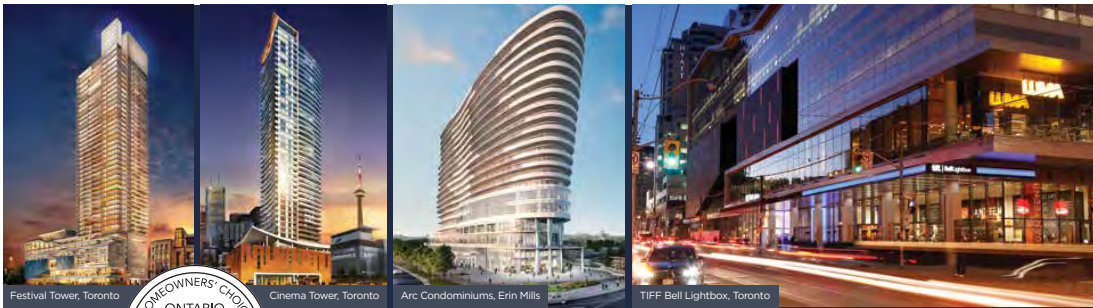
COMFORTABLE HEALTHY LIVING

- Low Volatile Organic Compound materials will be used throughout the suites and common areas to create a healthier living environment
- Insulated envelope reducing the heating and cooling load of the building
- In-suite ERV (Energy Recovery Ventilators) units
- Innovative amenities such as the Garden Prep Studio and Community Gardening Plots in support of urban agriculture

ENVIRONMENTALLY- FRIENDLY COMMUTING

- Electric Charging Stations ready for your environmentally-friendly cars
- Designated bicycle storage areas
- Two TTC Bus Rapid Transit (BRT) routes to get you to your destination quickly





2016 ONTARIO HIGH-RISE BUILDER OF THE YEAR



THE DANIELS CORPORATION: OVER 34 YEARS & BUILDING STRONG



**THE
DANIELS
CORPORATION
BUILDS WITH A
PASSION FOR
CREATING VIBRANT
COMMUNITIES IN EVERY
SENSE OF THE WORD.**

Daniels looks beyond the bricks and mortar, including social, cultural and economic infrastructures that will create a unique sense of place. This commitment has been an integral part of Daniels' corporate philosophy for over 34 years. Daniels has built more than 27,000 award-winning homes and apartments in master-planned, mixed-use communities, and commercial and retail spaces, and has earned its standing as one of Canada's largest and pre-eminent builders/developers. Company founder John H. Daniels is a towering figure of the North American real estate industry. In a career that has spanned over 50 years, the former Chairman and CEO of Cadillac Fairview Development Corporation has left an indelible mark on the quality of the places in which people live, work, play, create and shop.

OUR APPROACH

Led by company President Mitchell Cohen and a creative team of visionary professionals, The Daniels Corporation's integration of residential and commercial divisions results in a stable turnkey operation, which earns the company a high level of industry and public trust. Daniels plans, designs, develops, builds, and manages all residential and commercial properties in-house, enabling the ultimate in quality control and streamlined service. In essence, Daniels is an all-inclusive service provider - a company dedicated to seeing each project through to construction completion and beyond.

INNOVATION IN MASTER-PLANNING

Daniels transforms underutilized land into sought-after master-planned communities that include residential, name-brand retail and commercial opportunities. Daniels' land-use planning is based on the principle of integration into the existing urban fabric, creating neighbourhoods that fit seamlessly into their surroundings, providing a broad customer base for homebuyers, retailers and commercial businesses. For

example, Daniels is partnering with Toronto Community Housing to revitalize the 69-acre Regent Park community in Toronto's Downtown East, which is being looked at around the world as the gold standard by which challenged urban neighbourhoods can be re-imagined as healthy, sustainable communities. Daniels also partnered with renowned filmmaker Ivan Reitman to build TIFF Bell Lightbox, an international destination for the world of film. In addition to the iconic home of the Toronto International Film Festival, this mixed-use development includes restaurants, ground floor retail, a commercial parking garage and the 44-storey Festival Tower Residence. Daniels has also created iconic neighbourhoods throughout the GTA, providing residential, retail and commercial services within their NY Towers and HighPark Condominium communities in Toronto, Daniels City Centre and Daniels Erin Mills communities in Mississauga.

Daniels
love where you live™

BUILDING FOR EVERYONE

Dedicated to upholding a "people-first" philosophy, Daniels has long been a champion of affordable rental and ownership housing, and has built 3,600 affordable rental-housing units under several government programs. Daniels was the first developer to offer purpose-built rental housing in the Greater Toronto Area in 25 years through its Gateway Rental portfolio. In partnership with Sun Life Financial, Daniels has built a market rental building as part of its Daniels Erin Mills community in Mississauga, and at Regent Park, Daniels is building a high density independent living building in partnership with Chartwell Retirement Residences. Daniels FirstHome™ Communities across the GTA provide quality-built residences priced within the reach of first-time buyers and, at selected communities, Daniels has built seniors housing in partnership with Amica Mature Lifestyles Inc. On the commercial end of the spectrum, Daniels creates outstanding business opportunities for national brand companies as well as grassroots not-for-profit organizations.

For over 34 years, Daniels has embraced financial and hands-on generosity toward a number of charities and non-profit organizations, including Second Harvest, Eva's Initiatives, FoodShare, Habitat for Humanity, Covenant House Toronto, Egale Canada, Regent Park School of Music, and the Regent Park Film Festival.

WEAVING ARTS & CULTURE INTO THE COMMUNITY FABRIC

Daniels
love where you live™

Daniels has consistently demonstrated the value of embedding arts and culture into the fabric of new communities. In Regent Park, Daniels partnered with Artscape, Toronto Community Housing and members of the local community to create Daniels Spectrum – a 60,000 square foot cultural hub. Setting Daniels apart even further, the company has established an art procurement program that identifies and purchases art from local and emerging artists for residential and commercial lobbies and amenity spaces, thus contributing enormously to the area's economic development.

SUSTAINABILITY

Long before "green" became an industry buzzword, The Daniels Corporation took a proactive approach to protecting the environment through innovation in its construction techniques. Daniels continues to build for efficiency and environmental sustainability through standards beyond the Ontario Building Code, and in some cases, to LEED Gold certification. Within the Canadian building industry, Daniels is also leading the urban food revolution through trailblazing urban agriculture initiatives that incorporate farmers' markets and urban allotment gardens into its residential communities.



CF Toronto Eaton Centre



Daniels Spectrum, Toronto's Regent Park

Understanding that quality of life is created by much more than physical buildings, Daniels goes above and beyond to integrate building excellence with opportunities for social, cultural and economic well-being. In so doing, value is created for everyone.



THREE-TIME
WINNER OF THE
TARION HIGH-
RISE BUILDER OF
THE YEAR AWARD



HOME
BUILDER OF
THE YEAR
AWARD



COMMUNITY OF
THE YEAR AWARD
(BILD)



GREEN
DESIGN
AWARD



COMMUNITY OF
THE YEAR -
URBAN AWARD

BENCHMARK
SIGNATURE REALTY INC.,
BROKERAGE

宏地
基產

Daniels
WATERFRONT
CITY OF THE ARTS