

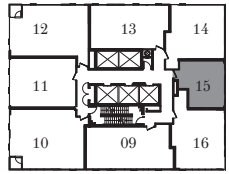
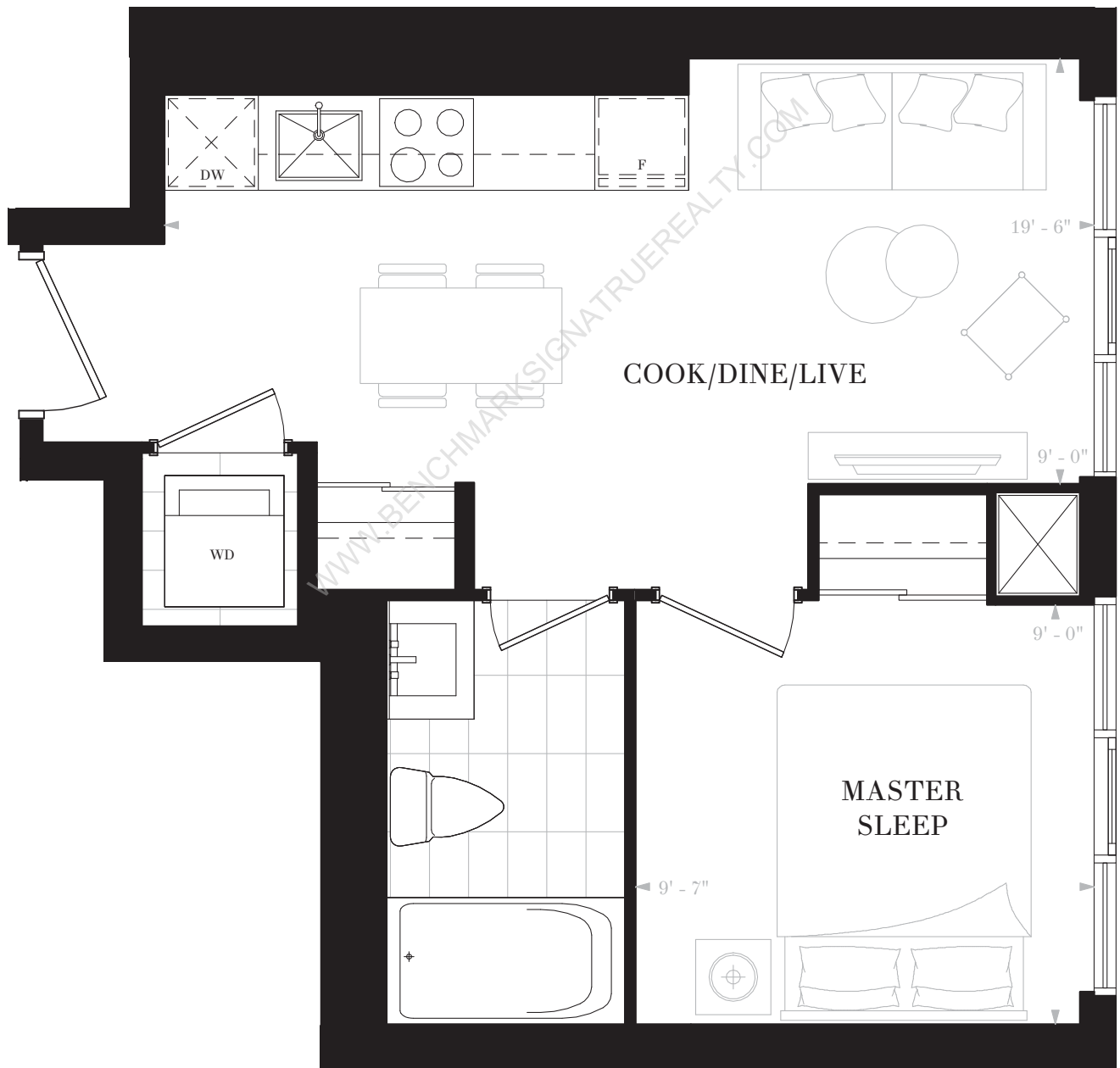
NOBU
RESIDENCES
TORONTO

SUITE W1A

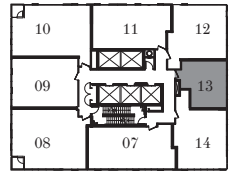
1 BEDROOM

1 BATH

INTERIOR: 417 SF

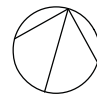


FLOORS 20-27



FLOORS 36-40

Any stated areas and/or dimensions shown are approximate only and subject to normal construction variances. Actual usable floor space may vary from any stated or depicted floor area. The layout of the suite may be reversed depending on the location of the unit within the project. Any furniture depicted is for illustration purposes only and does not necessarily reflect the electrical plan of the unit. Windows behind the cladding, installed as a design element, may be spandrel or vision glass. The view from or through the windows to the exterior may be partially obstructed by materials affixed to the exterior cladding of the building as part of an overall design element. Any and all sizes and/or specifications are subject to change without notice. All illustrations are artist's concept only. E. & O. E. May 2017



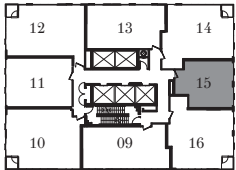
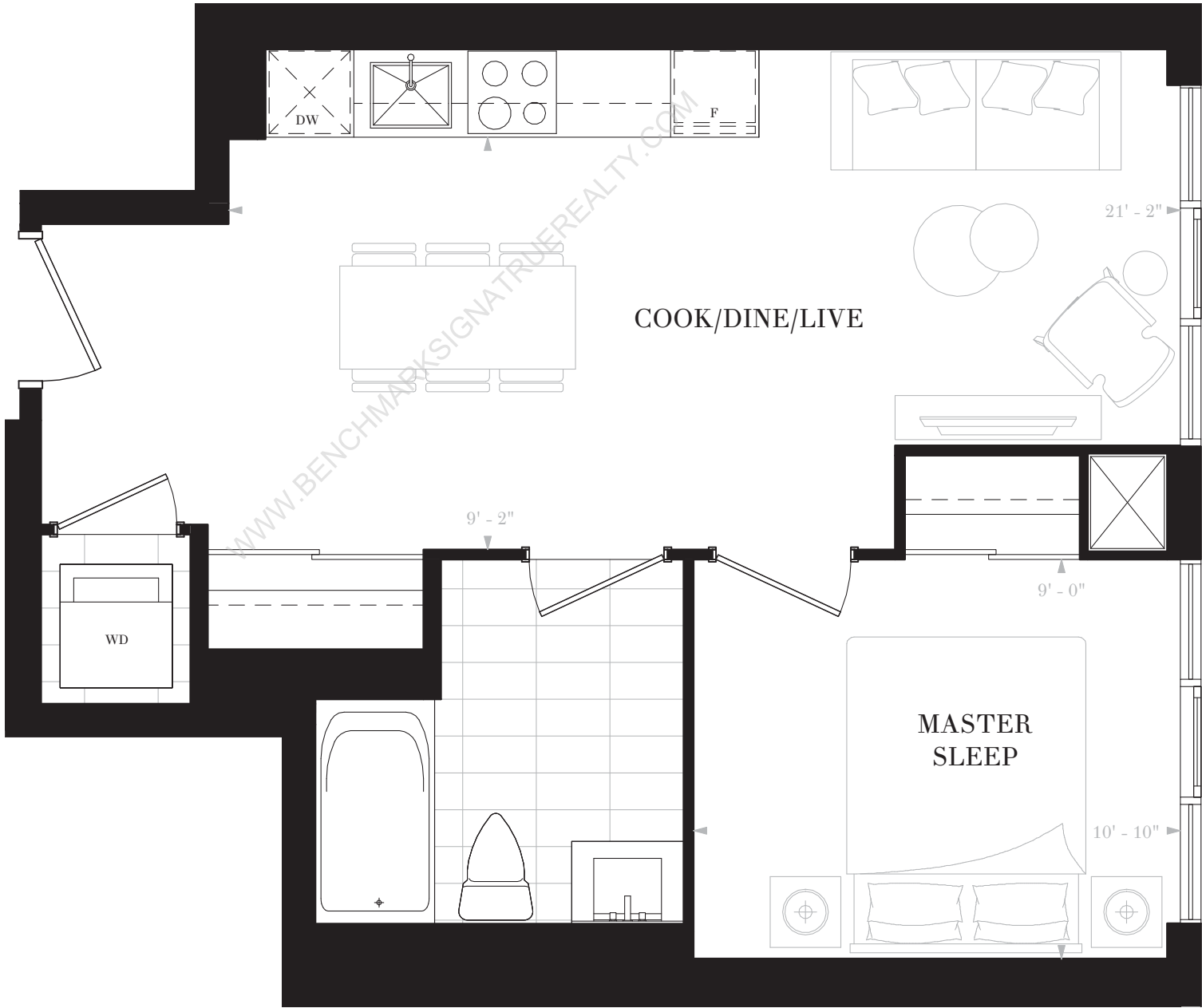
NOBU
RESIDENCES
TORONTO

SUITE W1B

1 BEDROOM

1 BATH

INTERIOR: 510 SF



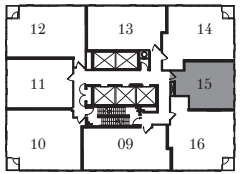
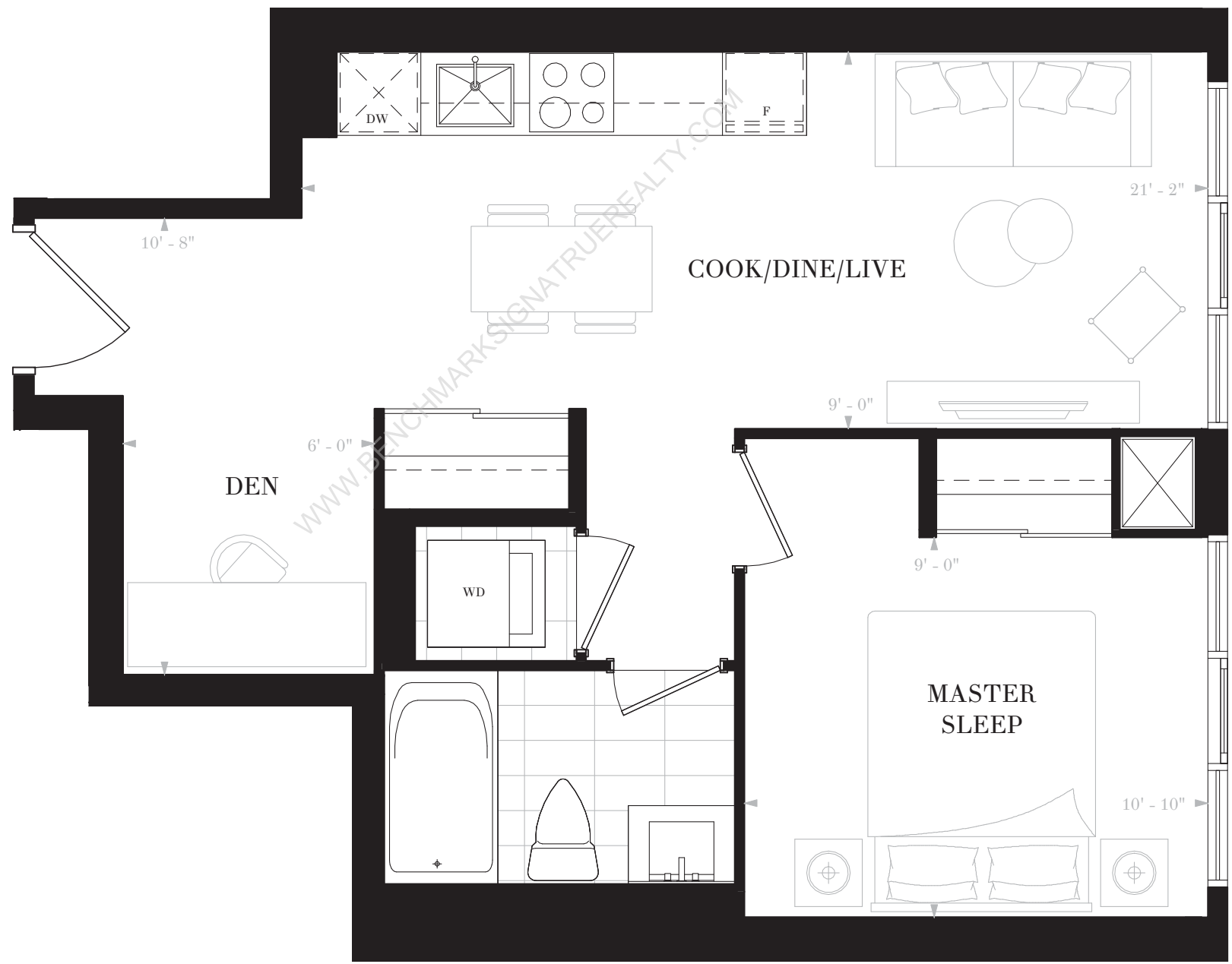
FLOORS 11-19

Any stated areas and/or dimensions shown are approximate only and subject to normal construction variances. Actual usable floor space may vary from any stated or depicted floor area. The layout of the suite may be reversed depending on the location of the unit within the project. Any furniture depicted is for illustration purposes only and does not necessarily reflect the electrical plan of the unit. Windows behind the cladding, installed as a design element, may be spandrel or vision glass. The view from or through the windows to the exterior may be partially obstructed by materials affixed to the exterior cladding of the building as part of an overall design element. Any and all sizes and/or specifications are subject to change without notice. All illustrations are artist's concept only. E. & O. E. May 2017



NOBU
RESIDENCES
TORONTO

SUITE W1C
1 BEDROOM & DEN
1 BATH
INTERIOR: 520 SF



FLOORS 28-35

Any stated areas and/or dimensions shown are approximate only and subject to normal construction variances. Actual usable floor space may vary from any stated or depicted floor area. The layout of the suite may be reversed depending on the location of the unit within the project. Any furniture depicted is for illustration purposes only and does not necessarily reflect the electrical plan of the unit. Windows behind the cladding, installed as a design element, may be spandrel or vision glass. The view from or through the windows to the exterior may be partially obstructed by materials affixed to the exterior cladding of the building as part of an overall design element. Any and all sizes and/or specifications are subject to change without notice. All illustrations are artist's concept only. E. & O. E. May 2017



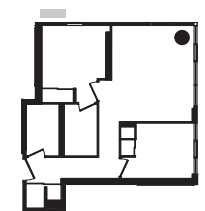
NOBU
RESIDENCES
TORONTO

SUITE W2A

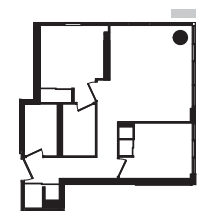
2 BEDROOMS

2 BATHS

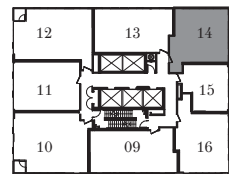
INTERIOR: 639 SF



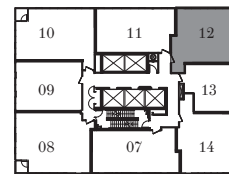
FLOORS 20-21, 24-25,
36-37, 40



FLOORS 22-23, 26-27,
38-39



FLOORS 20-27



FLOORS 36-40

Any stated areas and/or dimensions shown are approximate only and subject to normal construction variances. Actual usable floor space may vary from any stated or depicted floor area. The layout of the suite may be reversed depending on the location of the unit within the project. Any furniture depicted is for illustration purposes only and does not necessarily reflect the electrical plan of the unit. Windows behind the cladding, installed as a design element, may be spandrel or vision glass. The view from or through the windows to the exterior may be partially obstructed by materials affixed to the exterior cladding of the building as part of an overall design element. Any and all sizes and/or specifications are subject to change without notice. All illustrations are artist's concept only. E. & O. E. May 2017



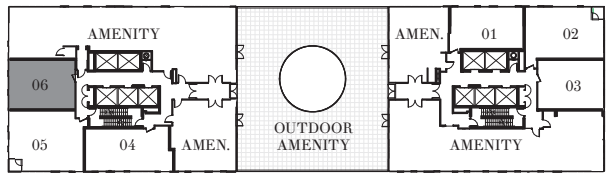
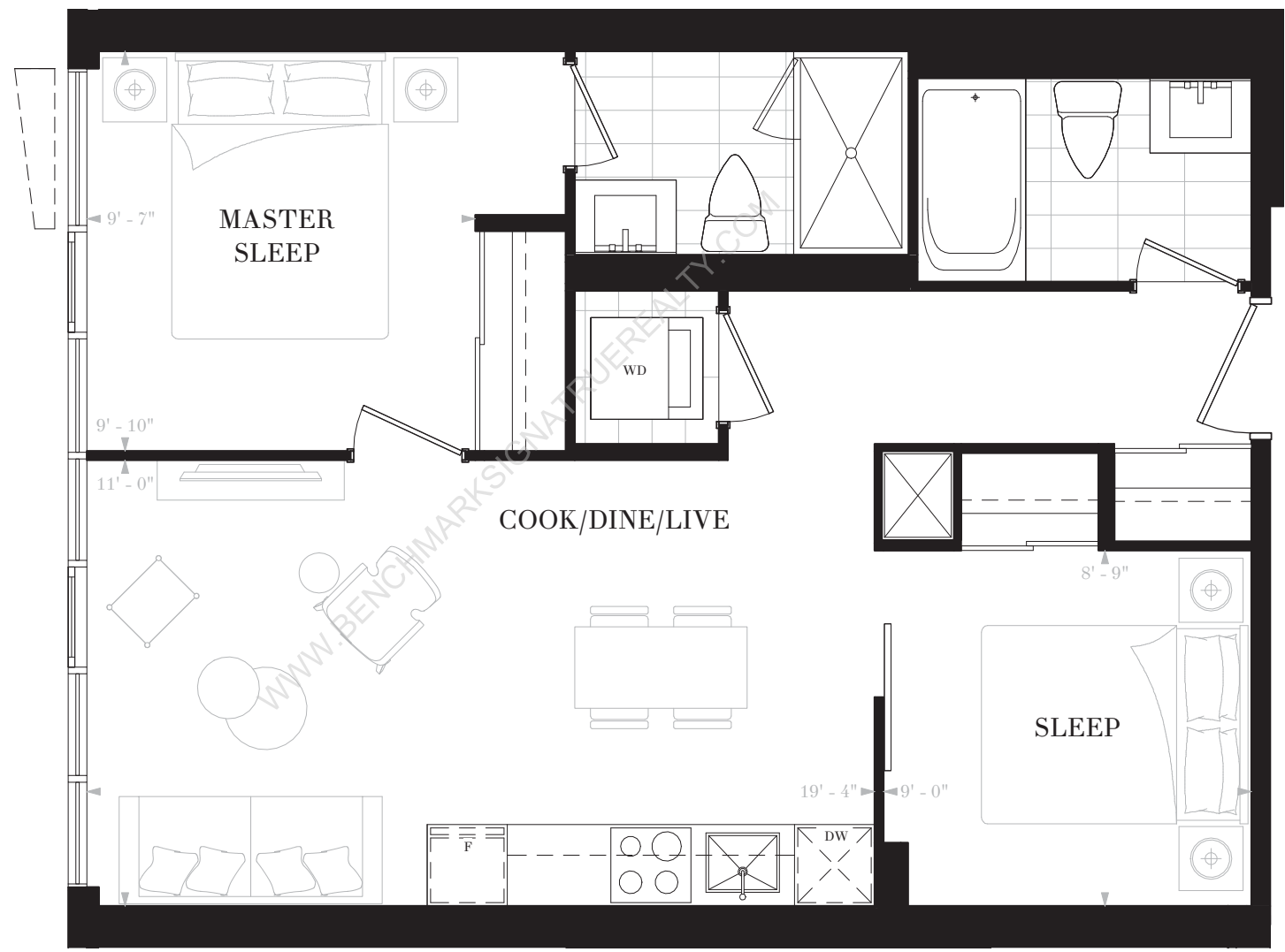
NOBU
RESIDENCES
TORONTO

SUITE W2B

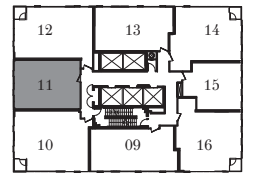
2 BEDROOMS

2 BATHS

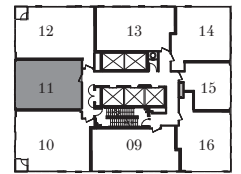
INTERIOR: 652 SF



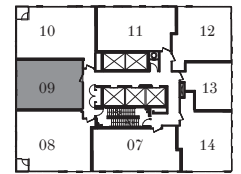
FLOOR 10



FLOORS 11-19, 28-35



FLOORS 20-27



FLOORS 36-40



FLOORS 10-11, 14-15, 18-19,
22-23, 26-27, 30-31, 34-35.



FLOORS 12-13, 16-17, 20-21,
24-25, 28-29, 32-33, 36-37, 40

Any stated areas and/or dimensions shown are approximate only and subject to normal construction variances. Actual usable floor space may vary from any stated or depicted floor area. The layout of the suite may be reversed depending on the location of the unit within the project. Any furniture depicted is for illustration purposes only and does not necessarily reflect the electrical plan of the unit. Windows behind the cladding, installed as a design element, may be spandrel or vision glass. The view from or through the windows to the exterior may be partially obstructed by materials affixed to the exterior cladding of the building as part of an overall design element. Any and all sizes and/or specifications are subject to change without notice. All illustrations are artist's concept only. E. & O. E. May 2017



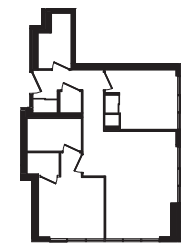
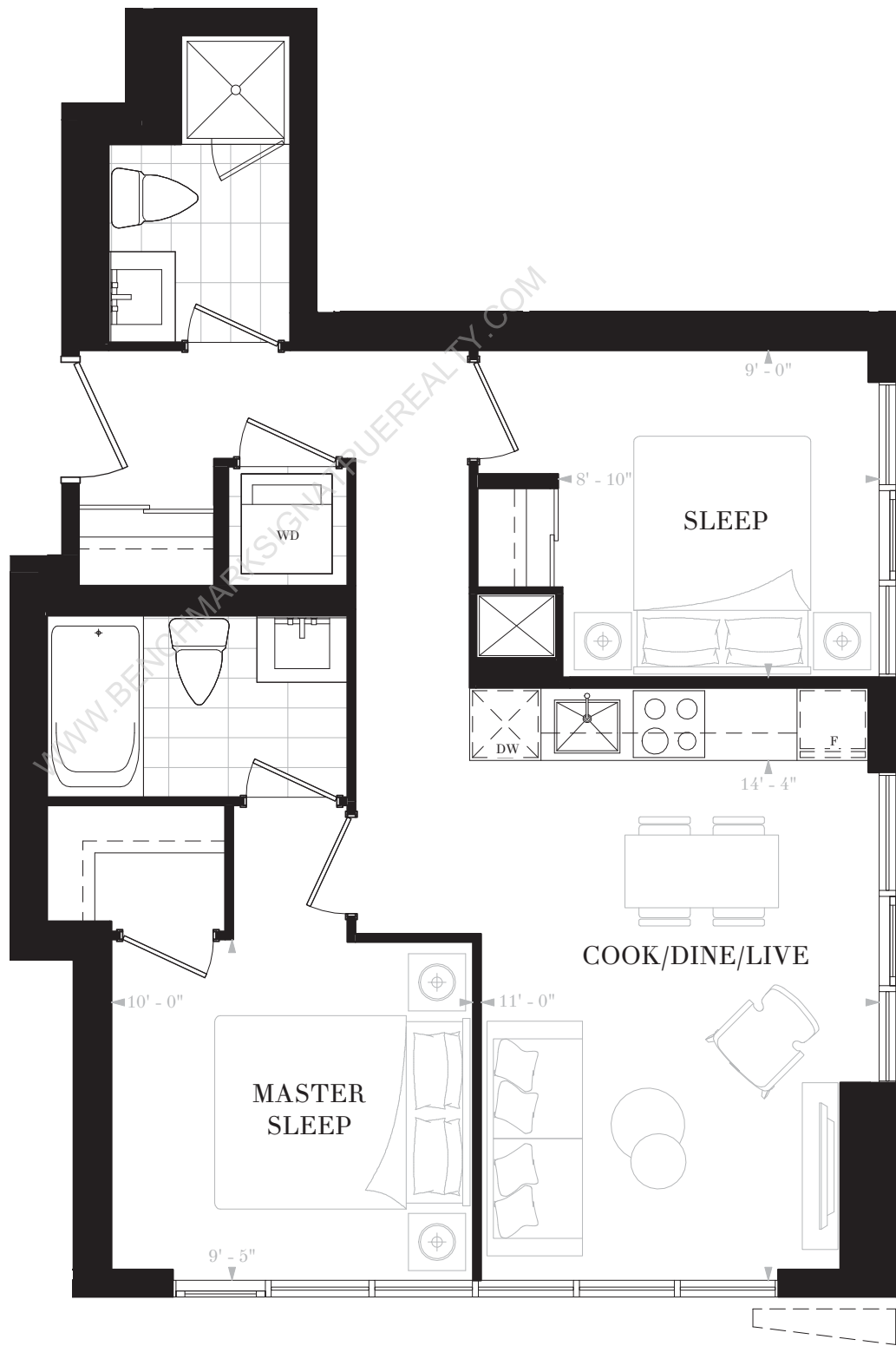
NOBU
RESIDENCES
TORONTO

SUITE W2C

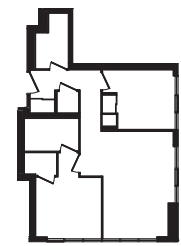
2 BEDROOMS

2 BATHS

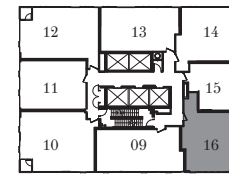
INTERIOR: 667 SF



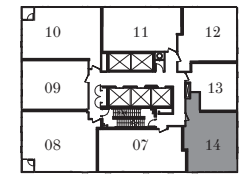
FLOORS 20-21, 24-25,
36-37, 40



FLOORS 22-23, 26-27,
38-39

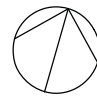


FLOORS 20-27



FLOORS 36-40

Any stated areas and/or dimensions shown are approximate only and subject to normal construction variances. Actual usable floor space may vary from any stated or depicted floor area. The layout of the suite may be reversed depending on the location of the unit within the project. Any furniture depicted is for illustration purposes only and does not necessarily reflect the electrical plan of the unit. Windows behind the cladding, installed as a design element, may be spandrel or vision glass. The view from or through the windows to the exterior may be partially obstructed by materials affixed to the exterior cladding of the building as part of an overall design element. Any and all sizes and/or specifications are subject to change without notice. All illustrations are artist's concept only. E. & O. E. May 2017



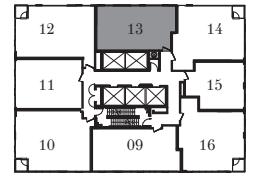
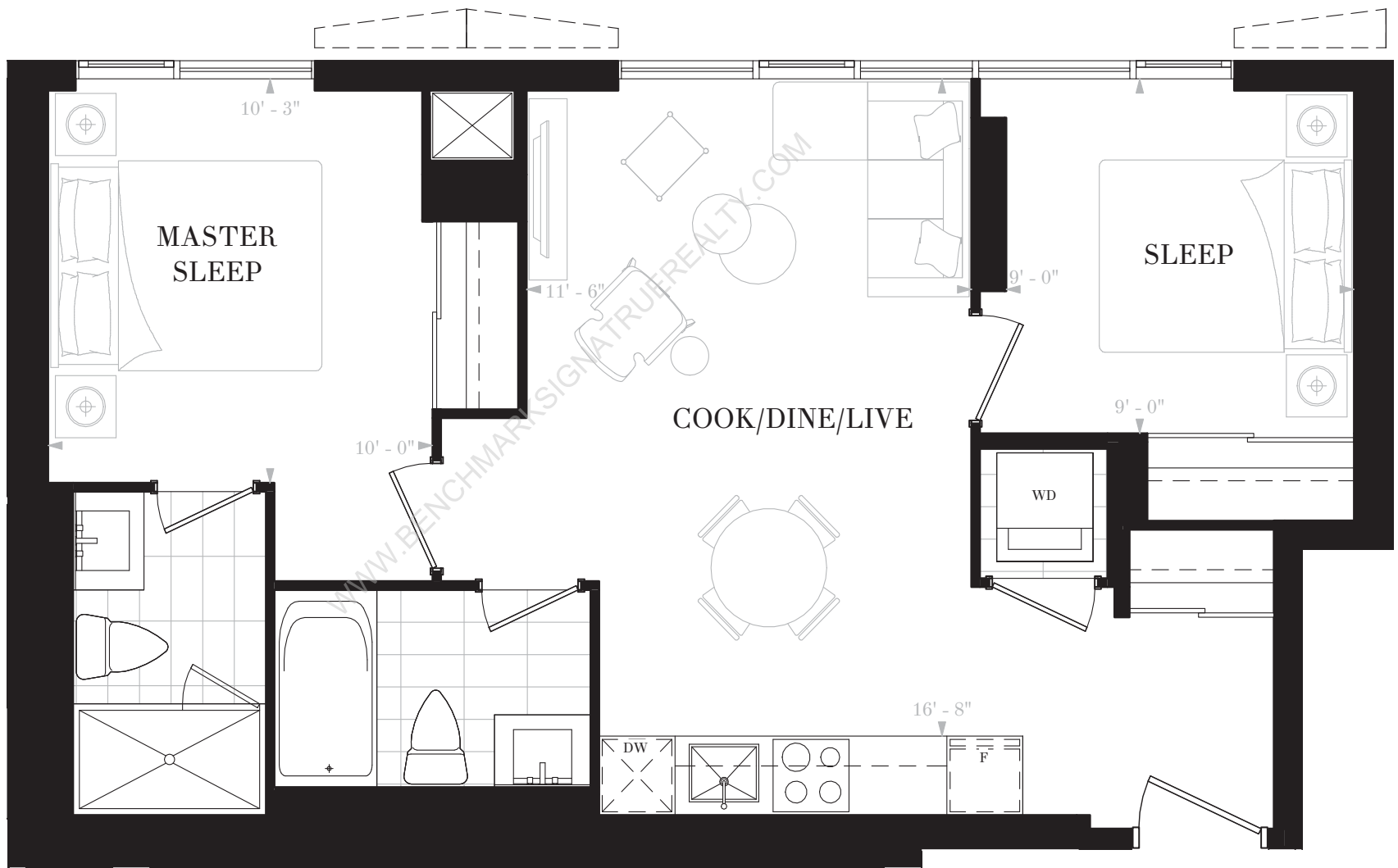
NOBU
RESIDENCES
TORONTO

SUITE W2D

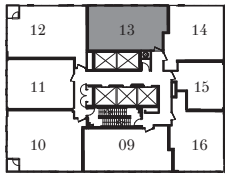
2 BEDROOMS

2 BATHS

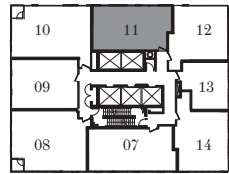
INTERIOR: 692 SF



FLOORS 11-19, 28-35



FLOORS 20-27



FLOORS 36-40



FLOORS 11, 14-15, 18-19,
22-23, 26-27, 30-31, 34-35,
38-39



FLOORS 12-13, 16-17, 20-21,
24-25, 28-29, 32-33, 36-37, 40

Any stated areas and/or dimensions shown are approximate only and subject to normal construction variances. Actual usable floor space may vary from any stated or depicted floor area. The layout of the suite may be reversed depending on the location of the unit within the project. Any furniture depicted is for illustration purposes only and does not necessarily reflect the electrical plan of the unit. Windows behind the cladding, installed as a design element, may be spandrel or vision glass. The view from or through the windows to the exterior may be partially obstructed by materials affixed to the exterior cladding of the building as part of an overall design element. Any and all sizes and/or specifications are subject to change without notice. All illustrations are artist's concept only. E. & O. E. May 2017



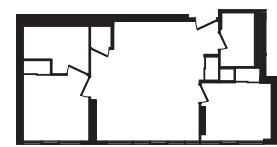
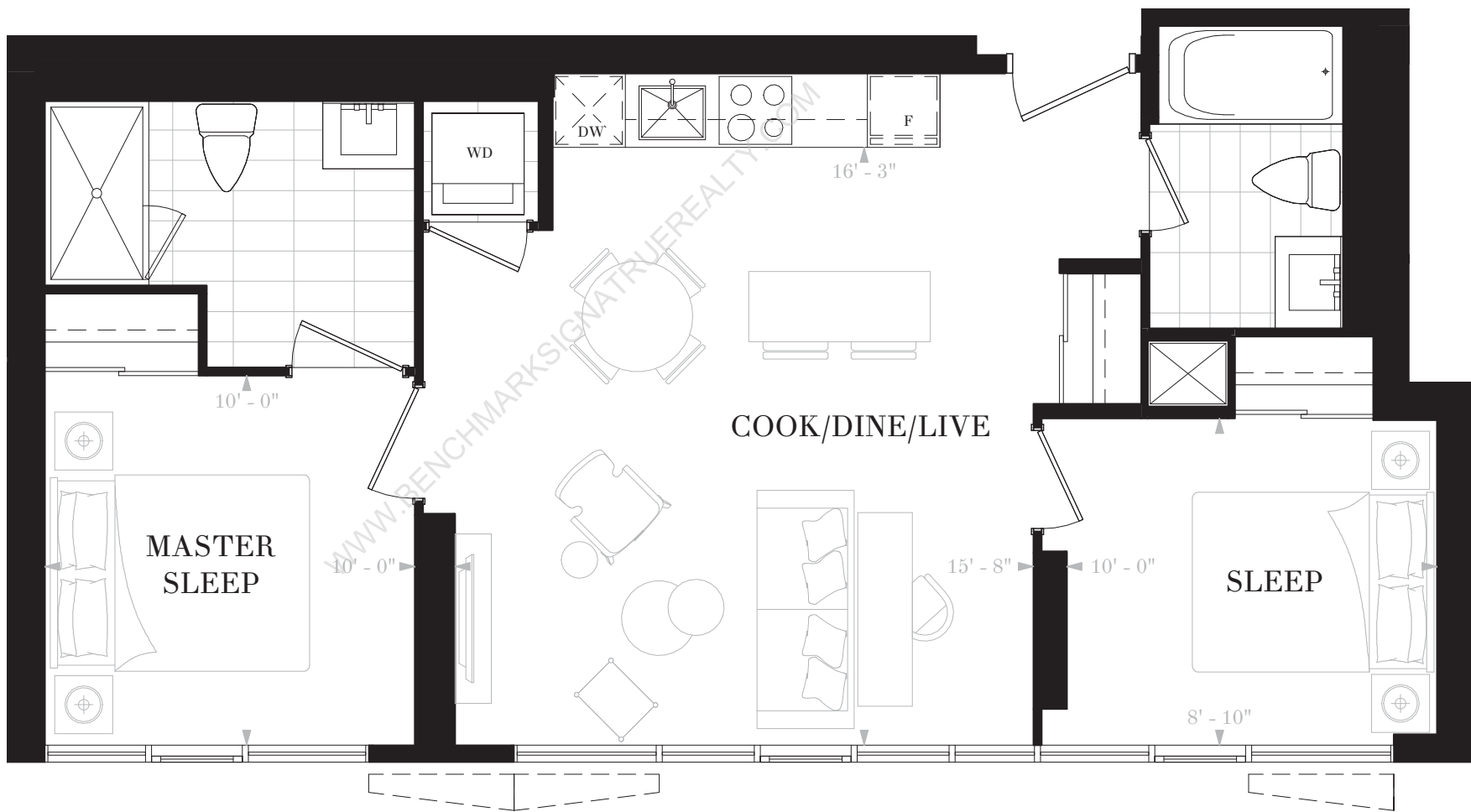
NOBU
RESIDENCES
TORONTO

SUITE W2E

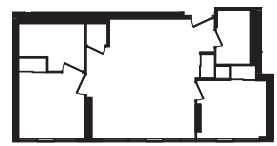
2 BEDROOMS

2 BATHS

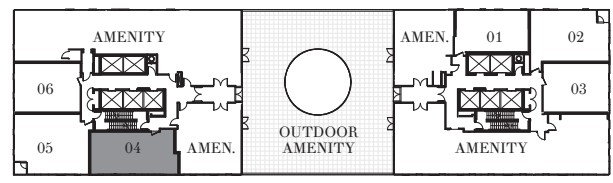
INTERIOR: 748 SF



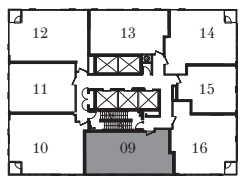
FLOORS 10-11, 14-15, 18-19,
22-23, 26-27, 30-31, 34-35, 38-39



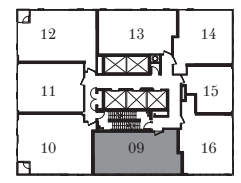
FLOORS 12-13, 16-17, 20-21,
24-25, 28-29, 32-33, 36-37, 40



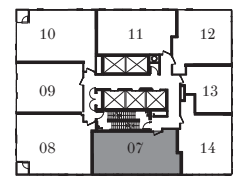
FLOOR 10



FLOORS 11-19, 28-35



FLOORS 20-27



FLOORS 36-40

Any stated areas and/or dimensions shown are approximate only and subject to normal construction variances. Actual usable floor space may vary from any stated or depicted floor area. The layout of the suite may be reversed depending on the location of the unit within the project. Any furniture depicted is for illustration purposes only and does not necessarily reflect the electrical plan of the unit. Windows behind the cladding, installed as a design element, may be spandrel or vision glass. The view from or through the windows to the exterior may be partially obstructed by materials affixed to the exterior cladding of the building as part of an overall design element. Any and all sizes and/or specifications are subject to change without notice. All illustrations are artist's concept only. E. & O. E. May 2017



NOBU

RESIDENCES
TORONTO

SUITE W2F

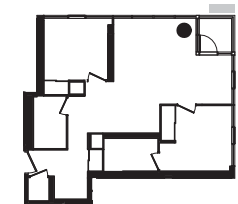
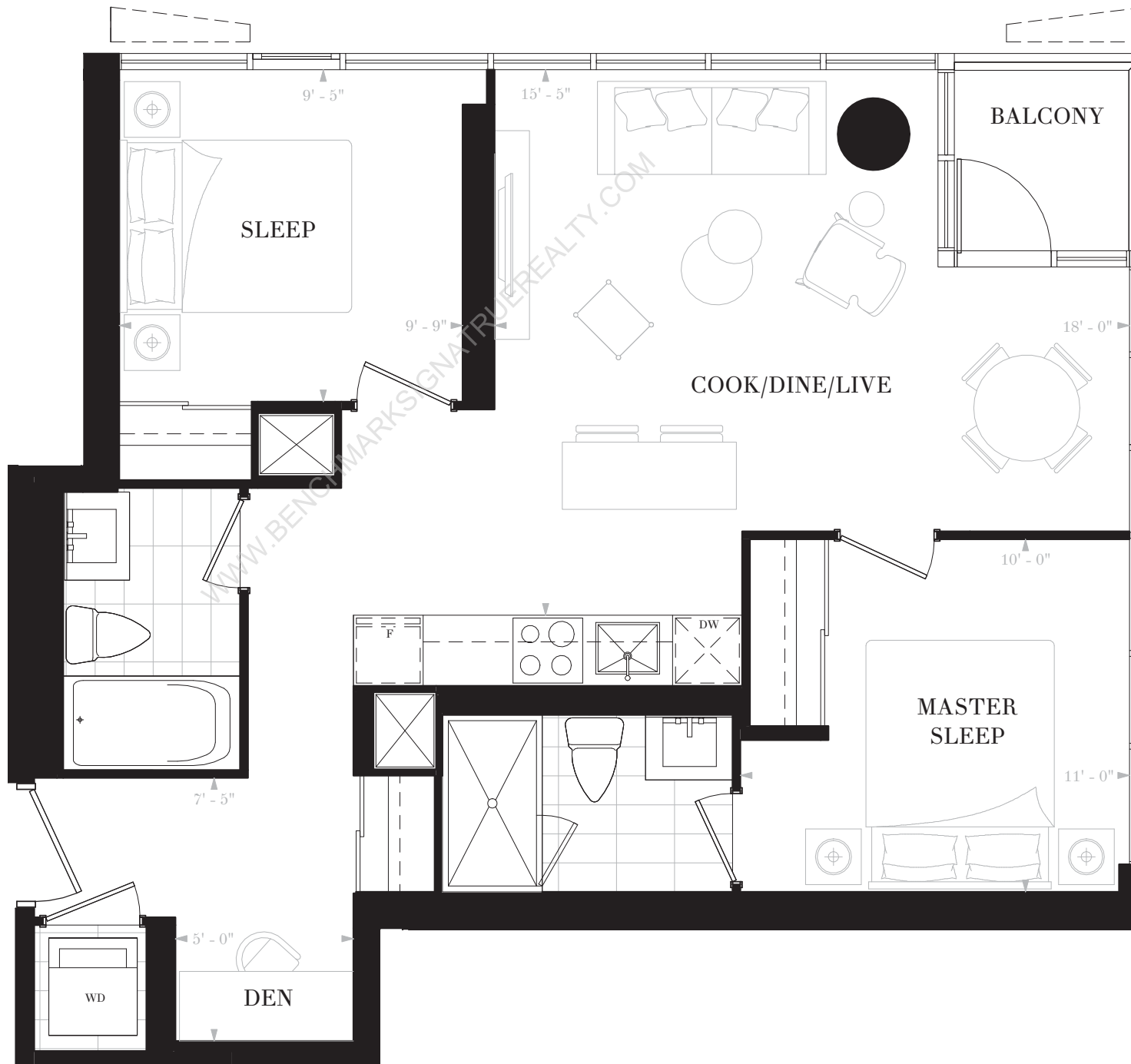
2 BEDROOMS & DEN

2 BATHS

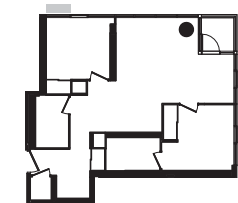
INTERIOR: 756 SF

BALCONY: 28 SF

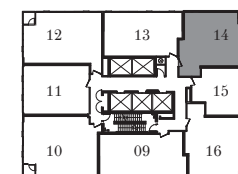
TOTAL: 784 SF



FLOORS 11, 14-15,
18-19, 30-31, 34-35



FLOORS 12-13, 16-17,
28-29, 32-33



FLOORS 11-19, 28-35



NOBU

RESIDENCES
TORONTO

SUITE W2G

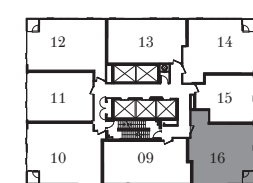
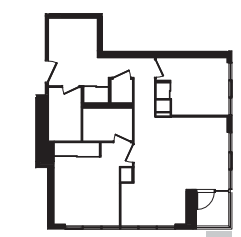
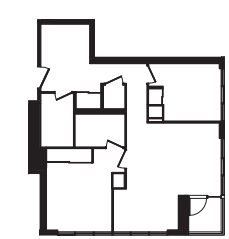
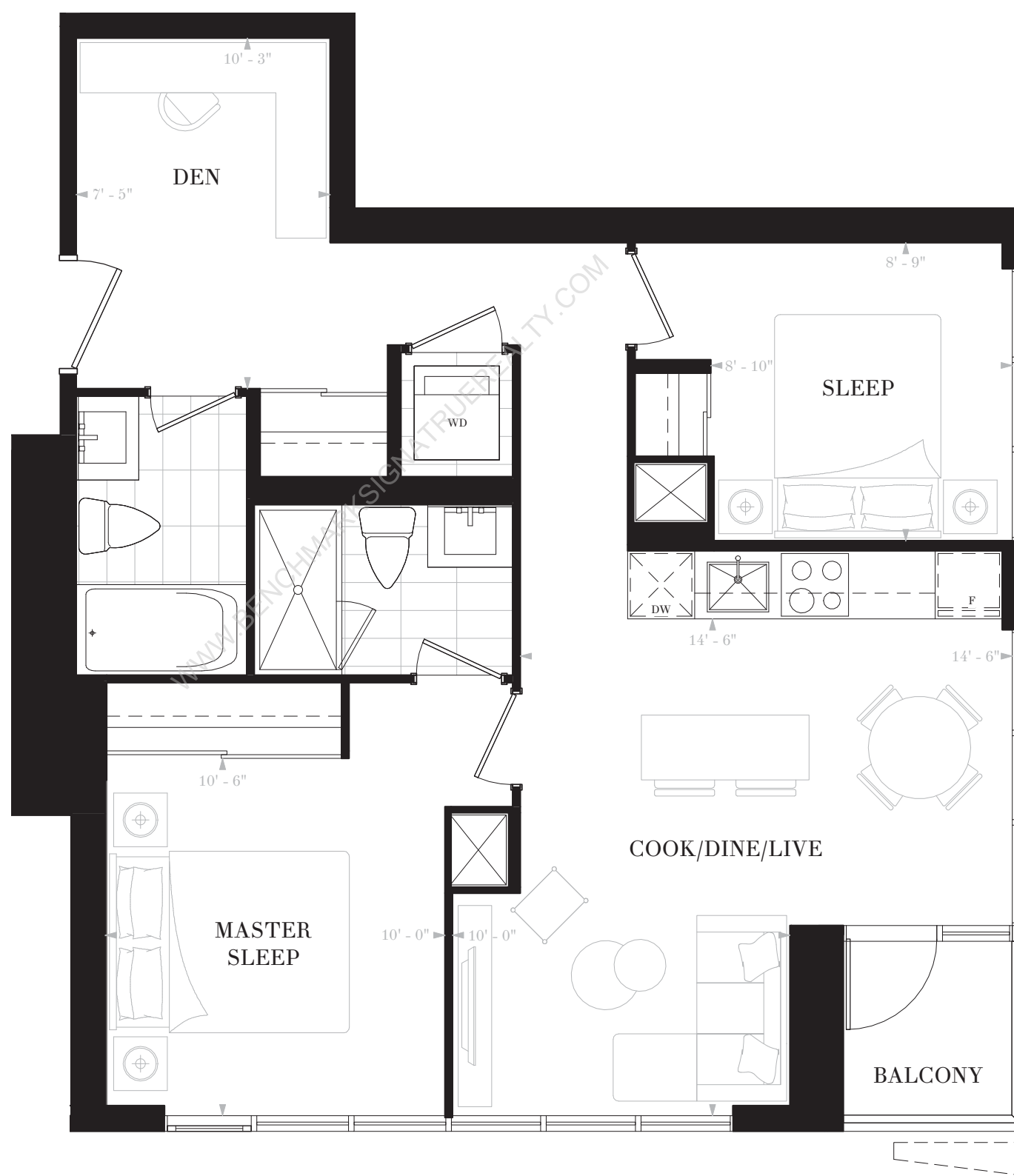
2 BEDROOMS & DEN

2 BATHS

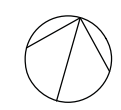
INTERIOR: 776 SF

BALCONY: 28 SF

TOTAL: 804 SF



Any stated areas and/or dimensions shown are approximate only and subject to normal construction variances. Actual usable floor space may vary from any stated or depicted floor area. The layout of the suite may be reversed depending on the location of the unit within the project. Any furniture depicted is for illustration purposes only and does not necessarily reflect the electrical plan of the unit. Windows behind the cladding, installed as a design element, may be spandrel or vision glass. The view from or through the windows to the exterior may be partially obstructed by materials affixed to the exterior cladding of the building as part of an overall design element. Any and all sizes and/or specifications are subject to change without notice. All illustrations are artist's concept only. E. & O. E. May 2017

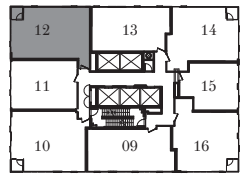
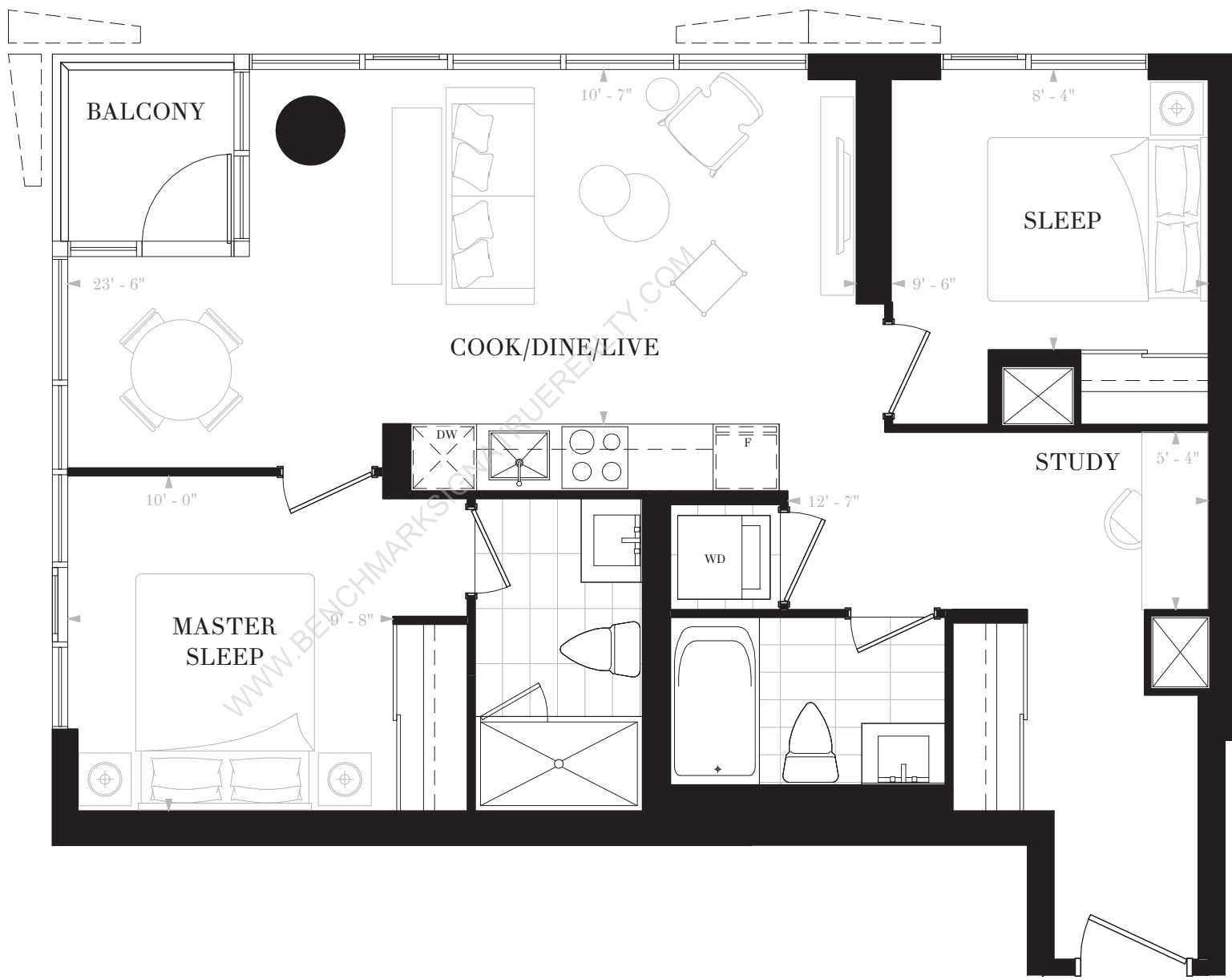


NOBU

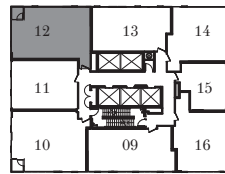
RESIDENCES
TORONTO

SUITE W2H
2 BEDROOMS
2 BATHS

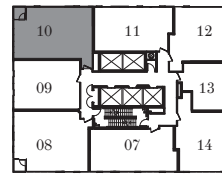
INTERIOR: 799 SF
BALCONY: 28 SF
TOTAL: 827 SF



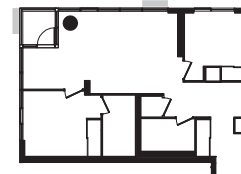
FLOORS 11-19, 28-35



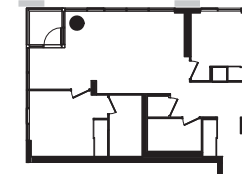
FLOORS 20-27



FLOORS 36-40



FLOORS 11, 14-15, 18-19,
22-23, 26-27, 30-31, 34-35,
38-39



FLOORS 12-13, 16-17, 20-21,
24-25, 28-29, 32-33, 36-37, 40

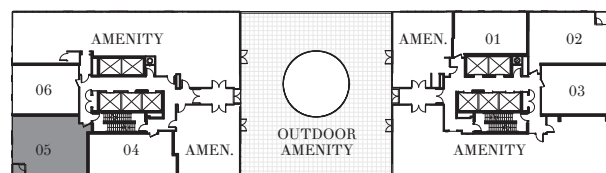
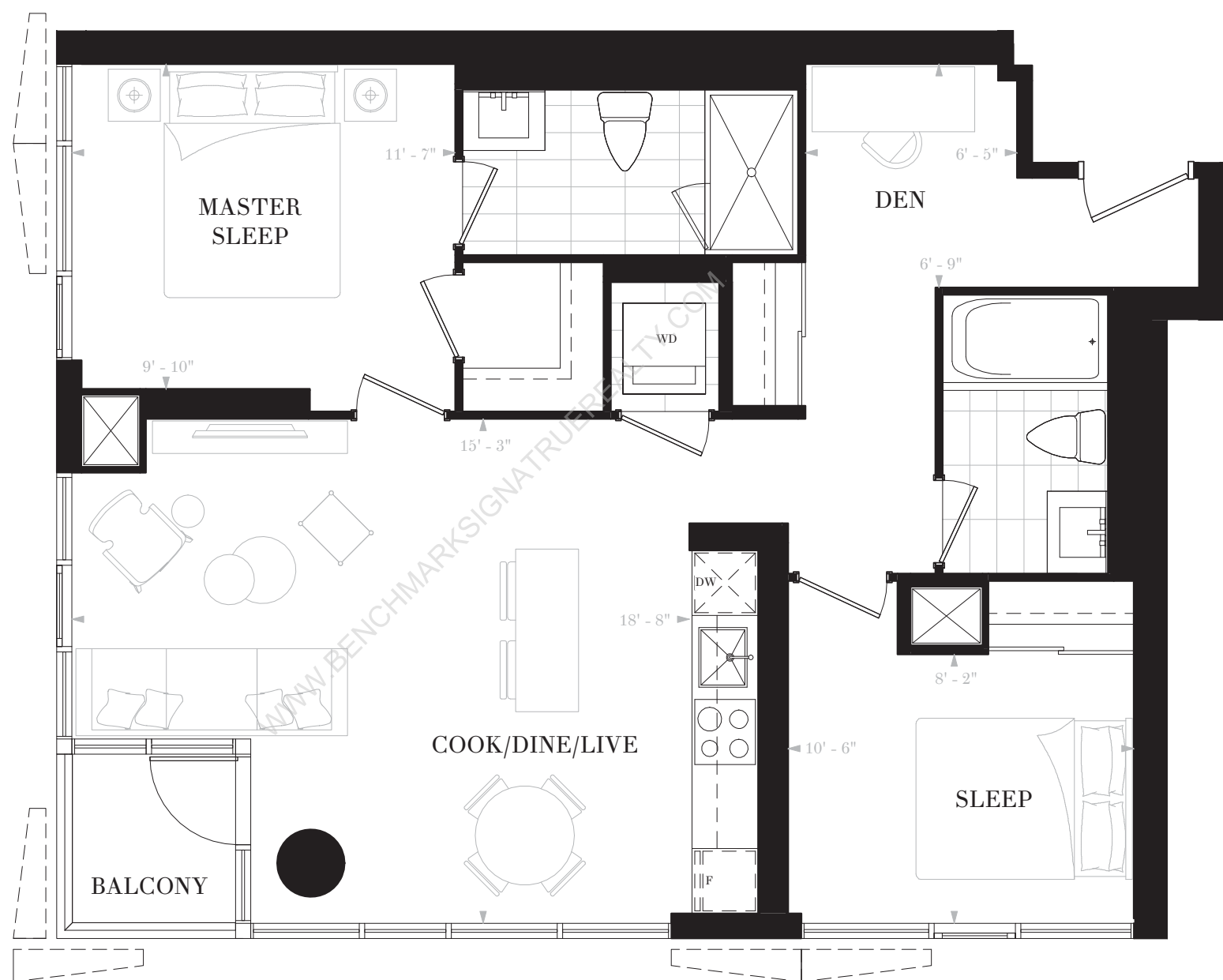
Any stated areas and/or dimensions shown are approximate only and subject to normal construction variances. Actual usable floor space may vary from any stated or depicted floor area. The layout of the suite may be reversed depending on the location of the unit within the project. Any furniture depicted is for illustration purposes only and does not necessarily reflect the electrical plan of the unit. Windows behind the cladding, installed as a design element, may be spandrel or vision glass. The view from or through the windows to the exterior may be partially obstructed by materials affixed to the exterior cladding of the building as part of an overall design element. Any and all sizes and/or specifications are subject to change without notice. All illustrations are artist's concept only. E. & O. E. May 2017



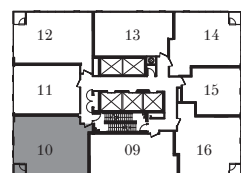
NOBU

RESIDENCES
TORONTO

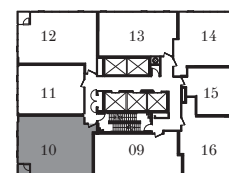
SUITE W2J
2 BEDROOMS & DEN
2 BATHS
INTERIOR: 862 SF
BALCONY: 28 SF
TOTAL: 890 SF



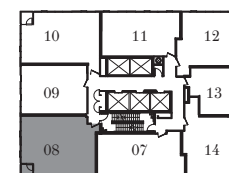
FLOOR 10



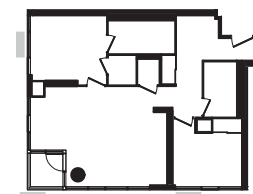
FLOORS 11-19, 28-35



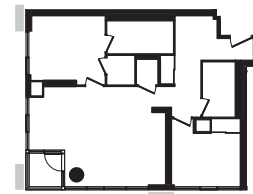
FLOORS 20-27



FLOORS 36-40



FLOORS 10-11, 14-15, 18-19,
22-23, 26-27, 30-31, 34-35, 38-39



FLOORS 12-13, 16-17, 20-21,
24-25, 28-29, 32-33, 36-37, 40

Any stated areas and/or dimensions shown are approximate only and subject to normal construction variances. Actual usable floor space may vary from any stated or depicted floor area. The layout of the suite may be reversed depending on the location of the unit within the project. Any furniture depicted is for illustration purposes only and does not necessarily reflect the electrical plan of the unit. Windows behind the cladding, installed as a design element, may be spandrel or vision glass. The view from or through the windows to the exterior may be partially obstructed by materials affixed to the exterior cladding of the building as part of an overall design element. Any and all sizes and/or specifications are subject to change without notice. All illustrations are artist's concept only. E. & O. E. May 2017

