

ALWAYS
FREE

The Antiques ★ TOURIST ★

DEVON | SOMERSET | DORSET | WILTSHIRE

2023 EDITION

YOUR ESSENTIAL
GUIDE TO:

ANTIQUES
VINTAGE
RETRO
RECLAMATION

NEW
WILTSHIRE
SECTION!

The Antiques Tourist is promoted by Antiques Bazaar
THE OLD TEXTILE MILL | SOUTH STREET | CREWKERNE | TA18 8AG
Telephone: 01460 77121

WWW.THEANTIQUESTOURIST.COM



THE ANTIQUE VILLAGE

AS SEEN ON T.V. ...



BBC BARGAIN HUNT



SALVAGE HUNTERS



ANTIQUES ROAD TRIP



MONEY FOR NOTHING



"Superb. I'd now put this in my top five antique centres in the country, superb!"

Drew Pritchard,
Salvage Hunters

10am - 4pm
Monday to Saturday
THE ANTIQUE VILLAGE

Hele, Exeter
EX5 4PW

Something for everyone
and a great place to
lose track of time
amongst beautiful things

How to find us:
EX5 4PW
(8 miles East of Exeter)

Travelling on the M5?
Exit at Cullompton following
the brown signs for Killerton House
and you'll find us on the main road B3181
Look out for our big black sign
and the red telephone box!

www.TheAntiqueVillage.co.uk
info@TheAntiqueVillage.co.uk
01392 882 062



The Dovetail Café
...the finest joint in town...

- Spacious 50+ seat lounge
- Baristas serving...
- Specialty Coffees
- Broad selection of quality teas
- A delicious choice of cakes
- Panini of the day



come and browse...

- HOME FURNISHINGS
- GOLD, SILVER & JEWELLERY
- SCIENTIFIC INSTRUMENTS
- PLANTS & GARDEN ORNAMENTS
- UNIQUE GIFT IDEAS
- CLOCKS
- HOME ACCENTS
- PERIOD LIGHTING
- SOFT FURNISHINGS
- CERAMICS & GLASS
- ART & PRINTS

St Michael's Church,
Brentor, Devon.



DEVON 5

SOMERSET 19

AREA MAP 32

DORSET 41

WILTSHIRE 59

Well, we have three groups of people to thank for our 2023 edition of The Antiques Tourist.

Firstly our loyal group of advertisers. Loyal! Because so many of you have been with us since our first edition back in 2014. Secondly our new advertisers who have joined us this year, making this another record-breaking year of 64 pages, and 54,000 copies of **The Antiques Tourist** in circulation! Each copy is FREE and can be picked up from over 300 locations in and around Devon, Dorset, Somerset, South Gloucestershire and Wiltshire. Last but by no means least our readers! Your enthusiastic support of all the businesses featured here this year, and every year, demonstrates just how useful **The Antiques Tourist** is for dealers, buyers, browsers, and visitors to our region.

Our other big news is that we now have a Wiltshire Section. Please find this on Page 59.

Being in the "trade" ourselves, we are aware of the ups and downs in business, but we believe there is still a real underlying confidence in what

we all do. Put simply -; source great stock, display it well, price it reasonably, and make it available to buyers. Evidenced by so many successful businesses advertising here in **The Antiques Tourist**. We are also aware of a number of acquisitions of local businesses by others, with ambitions of expansion. Surely this is further proof of a real confidence in the "trade" and a secure future for us all.

Please read our **ANTIQUES ROAD TRIP** on Page 5. This time it covers the beautiful and diverse county of Devon.

Finally, please tell us what you like, and do not like about **The Antiques Tourist**, and maybe send us details of your own "road trip".

Best wishes,

Anthony Bucke EDITOR. 1 March 2023.

Email: hello@theantiquetourist.com
www.theantiquetourist.com.

Disclaimer: Whilst every effort has been made to ensure accuracy, we do not accept responsibility for any losses or damage whatsoever arising from information contained in "The Antiques Tourist".
We advise readers to carefully check opening times etc of any business before travelling.

Copyright: No part of this publication may be copied or reproduced without prior written consent of the Editor.
Please send in any feedback, as it may well be useful for future publications. © February 2023.

DEVON

Approximate Odds	Page 8
Atlas	Page 8
Bramblewood & Thicket	Page 18
Brown's Antiques & Reclamation	Page 7
Carradale Farm Antiques Ltd	Page 63
Crediton Antiques Centre	Page 9
Dolphin Antiques Centre	Page 18
Exeter's Antiques Centre	Page 15
Fountain Antiques	Page 17
In A Nutshell	Page 12
Kingsbridge Antiques Centre	Page 11
Kirsten's Curiosities	Page 17
M & H Antiques	Page 11
McBains Antiques Centre	Page 15
Mere Antiques	Page 14
Murch's Antique Emporium	Page 7
Nana's Attic	Page 17
Sidmouth Antique Centre	Page 14
Source for the Goose	Page 8
Tavistock Pannier Market	Page 10
Tavistock Vintage & Salvage Fair	Page 11
The Antique Village	Page 2
The Attic	Page 15
The Old Chapel	Page 18
The Trading Hub	Page 13
The Vintage Trading Posts	Page 16
Topsham Quay Antiques Centre	Page 15

SOMERSET

14 Town Street	Page 38
Adorium Antiques & Curios	Page 19
Airs & Graces	Page 24
Antiques Bazaar	Page 29
Beedell Coram	Page 19
Buy Gones of Chard	Page 25
Castle Cary Antiques & Interiors	Page 37
Castle Reclamation	Page 27
Chatelaine Antiques	Page 20
Crewkerne Antiques Centre	Page 26
Curious Cow	Page 36
Eleven Squared	Page 28
Frome Reclamation Limited	Page 39
Fuller Stuff	Page 20
Glastonbury Reclamation	Page 34
Graham M. I. Sparks	Page 23
Indigo Sprout	Page 38
Keith Richards Antiques	Page 20
Langport Vintage Market	Page 27
Laura Lou Lou's	Page 34
Medieval to Modern	Page 40
Methuselah Antiques & Collectables	Page 27
Mumani Vintage	Page 35
No 57	Page 25
Phoenix Rising Antiques	Page 24

SOMERSET

Prowse Antiques & Interiors	Page 23
Purrfect Gifts Flea Markets	Page 35
Remains to Be Seen	Page 25
Ripley Antiques & Vintage	Page 37
Rogues' Gallery	Page 34
Savoy Art Deco	Page 22
Selwood House Antiques	Page 35
& Decorative Items	
Selwoods Antique Furniture	Page 22
Shepton Flea Market	Page 37
Somerset Trading Barn	Page 36
Stuff 'N Nonsense	Page 21
The Glass Shop	Page 31
The Vintage Bazaar	Page 35
Vintage Somerset	Page 40
Wessex Antique Bedsteads	Page 30

DORSET

Acreman St. Auctioneers & Valuers	Page 46
Artichoke	Page 46
Antiques, Arts, Crafts Market	Page 47
Bridport Antiques	Page 48
Bridport's Historic Street Market	Page 47
Cornucopia	Page 56
Dairy House Antiques & Interiors	Page 53
De Dannan	Page 46
Dorchester Curiosity Centre	Page 51
Dorset Guitar Museum	Page 52
Dorset Reclamation Ltd	Page 52
& The Aga Exchange	
Fish 4 Junk	Page 55
Global Art & Antiques	Page 50
Grandma's Attic	Page 40+64
Kingsettle Antiques	Page 56
Martin Green Interiors	Page 49
McAndrew Art & Lemon	Page 41
The Old Yarn Mills	Page 44+45
Room 1553	Page 55
Sherborne Antiques Market	Page 43
The Alleyways	Page 48
The Clock Work Shop	Page 58
The Customs House	Page 49
The Den	Page 57
The Old Grainstore Emporium	Page 55
Unit 83	Page 49
Walton House Antiques Ltd	Page 42
Wardon Hill Trading Post	Page 54

WILTSHIRE

Grace Decorative	Page 62
The Phoenix Emporium	Page 60
Salisbury Antiques	Page 59
Hingstons of Wilton	Page 61
The Vintage Nostalgia Festival	Page 62

TIME FOR A TRIP
AROUND THE COUNTY OF DEVON

The Customs House, Exeter Quay

Devon is the county which we explore this year on our Antiques Road Trip. The county has many contrasting features.

The mighty M5 motorway forges its way across the county, eventually at Exeter propelling 21st century traffic out onto the A30 towards Cornwall, the A38 towards Plymouth and the A380 to South Devon. But exploring areas away from these through-routes will soon take you into narrow lanes lined with arches of oak trees and beech hedges, so characteristic of Devon. Explore the moors – Dartmoor to the south and Exmoor to the north. Wend your way through the lovely river valleys of the Exe, the Axe, the Otter, the Culm and the Taw.

We start on the M5 southbound, leaving at Junction 28 for Cullompton. Drive through the town, and take the B3181 south along the Culm Valley. After about 4 miles, find **The Antique Village** on your right, adjacent to the village of Hele. This is the site of the former Whiteways cider factory, and as a consequence is worthy of a visit of at least one hour. In addition to carefully curated stock, there is The Dovetail Café and a monthly auction.

Retrace your steps to the M5 and head north to Junction 27, and take the A361 westwards to South Molton. Hailed "The Gateway to Exmoor", this is a lovely Devon market town. Taking the second exit off A361, onto B3226, you will soon find **Browns Reclamation** on the lefthand side. Look out for the double-decker bus! Then proceed into the town centre, and find **Atlas Antiques, Source for the Goose** and **Approximate Odds**, all in East Street.

Take the B3227 westwards to Umberleigh. At the bridge over the River Taw find **Murch's Antique Emporium**.

Then turn left onto the A377 towards Crediton. This is a stimulating tree-lined drive through the Taw Valley, passing such evocatively named places as Eggesford Barton, Nymet Rowland and Zeal Monachorum. Find **Crediton Antiques Centre** on the left about halfway down Crediton High Street.

As the next stop is Tavistock, and we need the A30 westbound, return to the top of the

High Street, and turn left at the traffic lights into Landscore. Follow this road, sign posted Cheriton Bishop, forking left at Heartland Way Caravans. At Cheriton Bishop take the A30 westbound past Okehampton, leaving at Sourton Down onto A386 southbound past Lydford Gorge and through Mary Tavy to Tavistock.

Tavistock Pannier Market is situated off Bedford Square. The antiques and collectables day is every Tuesday, whilst **Tavistock Vintage and Salvage Fair** is held here 4 times a year.

Leaving Tavistock travel south through Yelverton towards Plymouth, joining the A38 eastbound to Ivybridge. Then take A379 south through Modbury into Kingsbridge. This is about a 60 minute journey by car. Recently changed hands, **Kingsbridge Antiques Centre** offers a wide range of antiques & collectables.

Just north of Kingsbridge find **M&H Antiques** at Torre Quarry, TQ9 7FA.

It is now around 30 minutes along B3196 and A38 to find **In a Nutshell Antiques** in Ashburton.

Devon's county town – Exeter – is our next destination. Marsh Barton is one of Exeter's oldest trading estates, and here you will find **The Attic**, upstairs at Bakers Yard, Alphin Brook Road, and nearby **The Trading Hub** in Marsh Green Road East. Venture into Exeter City Centre for **Exeter's Antiques Centre** and Riverside Cafe on The Quay – where TV's "The Onedin Line" was filmed around 50 years ago!

Topsham is on the Exe estuary, just a few miles south of the city of Exeter. In Fore Street is **Mere Antiques**, a traditional antiques shop, and on the quay, with wonderful views of the Exe Estuary is **Topsham Quay Antiques Centre**.

At Exeter airport you will find two dealers in quite contrasting premises. **McBains Antiques** are in the few remaining World War 2 buildings

in the area – with their distinctive architecture. Next door **Carradale Farm Antiques** are in rather more utilitarian warehouse accommodation.

Leaving the "antiques complex", turn left away from the airport and follow the B3184 to A3052 Sidmouth Road. Turn left to Sidmouth. In about 15 minutes find **Sidmouth Antiques Centre** in All Saints Road.

Head north out of Sidmouth on B3176, crossing over A3052 at The Bowd Inn to Ottery St Mary. Upon entering Ottery, bear left into Mill Street, and **Kirstens Curiosities** are on the right hand side. Easy parking outside. Then continue to Finnimore Industrial Estate for **The Vintage Trading Post**. Interesting artefacts outside and inside.

Now drive north along The Otter Valley to the A30 at Iron Bridge, and eastwards to Honiton, exiting at Turks Head. At the first roundabout turn left towards the High Street and find **Fountain Antiques** on the right at the first set of traffic lights.

A worthwhile detour is to Dunkeswell, where you will find **Nana's Attic** at Flightway Business Park.

We now have a short trip to Beer on the East Devon coast. Leave Honiton along New Street, past Honiton railway station to Honiton Golf Club. Bear right onto Farway Common Road, then left at A3052 towards Seaton. Finally right into Beer. The **Dolphin Antiques Centre** is situated in buildings to the rear of the popular Dolphin Hotel.

Next stop Seaton. Here we find **Bramblewood and Thicket** in Queen Street. Then inland along the Axe Valley to Axminster, and **The Old Chapel** in Castle Street.

Our final visit on this Devon Road Trip is another branch of **The Vintage Trading Post** at

Tytherleigh, around 3 miles north of Axminster on A358.

We really hope you enjoy this trip, possibly just picking out the parts that best suit you, or are of most interest to you.

We do recommend that you confirm opening times with individual business before travelling far.



Brown's Antiques & Reclamation

Large Reclamation Yard and Antique Showrooms
Antique Furniture & Decorative Items
Architectural Salvage & Garden Antiques



Barnstaple Rd, South Molton, EX36 3RD

01769 579997 07970 669382

www.brownsantiquesandreclamation.co.uk

stephen@brownsantiquesandreclamation.co.uk

Open 7 days a week



SOURCE for the GOOSE

UNIQUELY INSPIRING INTERIORS

Invites you to browse an ever changing range of antique, vintage and painted furniture and delightful home accessories



01769 579483

5 East Street, South Molton, Devon, EX36 3BU

www.sourceforthegoose.com

 [instagram.com/source_for_the_goose](https://www.instagram.com/source_for_the_goose)

 [facebook.com/sourcegoose](https://www.facebook.com/sourcegoose)



APPROXIMATE ODDS

ANTIQUES + CURIOSITIES

01769 579444

 @ApproximateOdds

Open: Monday to Saturday, 10am. to 5pm.

103 East Street | South Molton | EX36 3DF



CREDITON ANTIQUES CENTRE

124 High Street Crediton Devon EX17 3LQ



Set in the heart of the High Street, Crediton Antiques Centre is a small compact shop with various different dealers' cabinets selling a wide range of antiques, collectables, ceramics, glass, gold & silver, militaria, small furniture, jewellery, kitchenware, oriental, books, railwayana, transport, toys, signage, gifts & lots more!

10am to 4pm Monday to Friday, 10am to 3pm Saturday.
Closed Sunday and Bank Holidays.

Tel: 01363 777779 Email: ayeshagodfrey2@aol.co.uk
www.salvagefairs.com



Whether handmade, organic, old or new, all our pieces are individual and sourced with an eye to captivate. For you, your home and garden.



ATLAS

Atlas 1 East Street, South Molton,
Devon EX36 3BU

Telephone 01769 573730

Open 9.30 - 4.30pm Tuesday - Friday.

Saturday till 4.00pm.

Find us on Instagram [shopatlas](https://www.instagram.com/shopatlas)



Tavistock PANNIER MARKET



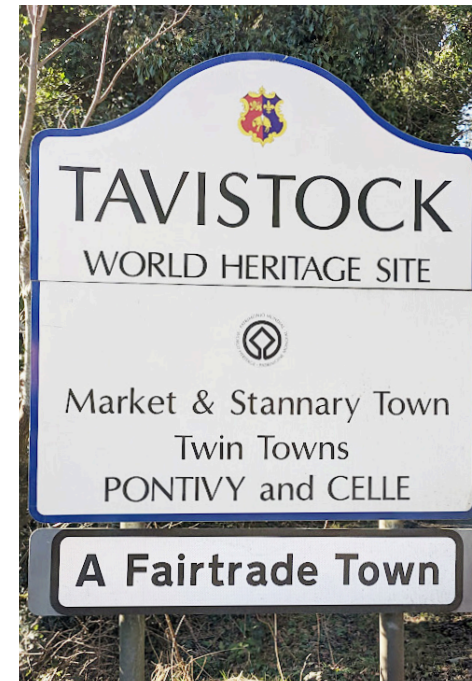
OPEN:
TUESDAY-SATURDAY
9AM-4PM

Tuesdays - Antiques & Collectables
Wednesday & Thursday
- Crafts & Mixed Market
Friday - Charter Market
Saturday - Themed Markets



Traders specialise in: Silver • Jewellery • Coins & Bank Notes • Medals
Stamps • Postcards • Military Uniforms • Artillery & Swords • Tools
Fishing Memorabilia • China Glass • Cutlery • Oriental Pottery
Antiquarian Books • Salvage • Old Bottles
General Antiques & Collectables

For more information on our Markets & Events visit:
WWW.TAVISTOCK.GOV.UK



TAVISTOCK VINTAGE & SALVAGE FAIR

Butchers Hall, Tavistock,
Devon, PL19 0AL

SATURDAYS 2023

27th May

16th September

25th November

10am - 4pm

**FREE
ENTRY**

Find us on
Facebook
& Instagram



M & H Antiques

Antiques, Art
and Decorative Items
www.mandhantiques.co.uk



We are now trading from our warehouse
Friday & Saturday 10 to 4
or by appointment

Unit 8 Torr Trade Park
Torr Quarry, Kingsbridge TQ9 7FA
07817469226 & 07368558604
info@mandhantiques.co.uk
Follow us on instagram

Kingsbridge Antiques Centre



FRIENDLY & INTERESTING
18 DEALERS in 5 ROOMS

*Two minutes walk from the Quay
Next to the King of Prussia Pub*



01548 857155

Church Street, Kingsbridge TQ7 1DE
www.kingsbridgeantiques.co.uk

 [@kingsbridgeantiquescentre](https://www.instagram.com/kingsbridgeantiquescentre)
 [@KingsbridgeAntiques](https://www.facebook.com/KingsbridgeAntiques)



In a Nutshell

ANTIQUES & INTERIORS

7 North Street, Ashburton, Devon, TQ13 7QJ

Open Monday - Saturday 10am - 5pm



Tel : 01364 654648 / 07800561203

www.inanutshellantiques.co.uk



Over 10 antique shops - a must visit destination!

www.ashburtonantiquetrail.co.uk



Industrial - Contemporary
Antiques - Vintage



@exetertradinghub

ONE DESTINATION FOR
Vintage-Contemporary-Antiques-Industrial-Garden-Reclamation

Located on the ground floor



HIDDEN
COFFEE HOUSE

16 MARSH GREEN RD EAST,
MARSH BARTON
EXETER EX2 8PQ

01392 436919

exeterhub@outlook.com

FREE PARKING
DOGS WELCOME

'A treasure hunters delight.
So much to see you need
at least a whole day,
if not longer!

Great concept, Love it!
Customer review 2022

Opening Hours:
Mon - Sat 10am-5pm
Sun - 10am-4pm

mere
antiques
Topsham Devon
01392 879569
info@mereantiques.com

Marilyn & Bob Reed have been trading as **mere** antiques since 1985 and have had the shop in Topsham since November 1995.

Topsham is a delightful small town, heavy with Dutch influence and was the main port of Exeter in the 19th century.

There is easy access from the M5 motorway.

mere antiques are open from Monday to Saturday, 10am until 5pm. Out-of-office hours are available by appointment, please call 07870 206299.



A late 19th century novelty table vitrine or bijouterie modelled in the form of a tooled gilt leather covered sedan chair, complete with original beams and glass shelves.



A fine quality 19th century silver inkstand London 1857 by Edward & John Barnard



A 19th century cast iron lantern of Moorish influence



A beautiful Erard Gothic Concert Maple and Gilt Harp C1850

www.mereantiques.com

SIDMOUTH ANTIQUE CENTRE

15 YEARS IN BUSINESS

OPEN MONDAY TO SATURDAY 10AM - 5PM

Over 25 Dealers selling a wide range of Antique, Collectables & Vintage Items

An Aladdins Cave of Various Items:

Furniture • Silver • Militaria • Coins • Postcards
• Toys • Glass • Vinyl • Ephemera • Jewellery • China

Browsers more than welcome...

Tel. **01395 512588**

Devonshire House All Saints Rd, Sidmouth
EX10 8ES (Opposite the Post Office)

@SidmouthAntiques

www.sidmouthantiques.co.uk

FREE LOCAL DELIVERY • WHEELCHAIR FRIENDLY

Topsham Quay Antiques Centre



Come and visit us!

We are open 7 days a week
65 Dealers with thousands of antique & retro items
on 3 floors of a historic warehouse

01392 874006

The Quay, Topsham, Devon EX3 0JB

Opening hours:

Winter 10:00 - 15:45

Summer 10:00 - 16:45

Except Sundays 11:00 - 16:45



www.quayantiques.com



The Attic
Antiques Vintage & Collectables
Unit 10f, Bakers Yard, Alphin Brook Road, Marsh Barton
Exeter EX2 8RG
Call: **07974584246**
www.facebook.com/theatticbakersyard

Exeter's Antiques Centre

and The Riverside Café



Browse our eclectic mix of antiques & collectables
Enjoy a coffee, brunch, lunch or afternoon tea

Open every day 10am - 5pm

The Quay, Exeter. EX2 4AP



01392 493501 | www.exeterquayantiques.co.uk

McBains ANTIQUES CENTRE *At the Antiques Complex*

EXETER AIRPORT, EXETER, DEVON EX5 2LL



07568 955797

mcbains-of-exeter@live.co.uk

Open: Monday to Friday 10am - 5pm

Saturday: 10am - 1pm

Closed Bank Holidays

SPACE AVAILABLE FOR RENT



www.facebook.com/mcbainsantiques

FIND OUR SHOPS IN TYTHERLEIGH

Chard Road, Axminster,
Devon EX13 7BE

01460 221330

OTTERY ST MARY

17 Fynnimore Trading Estate
EX11 1NR

01404 811224



Dog Friendly ★ Easy Parking ★ Friendly and Knowledgeable Staff
Great Atmosphere ★ Realistic Prices

OPEN 7 DAYS A WEEK 10AM - 5PM • SUNDAY 10:30AM - 4PM

WE SELL A HUGE VARIETY OF DECORATIVE & FUNCTIONAL ITEMS INCLUDING:

VINTAGE ★ RETRO ★ INDUSTRIAL ★ BROCANTE ★ ANTIQUE ★ RECLAMATION
TOOLS ★ VINYL ★ FURNITURE ★ JEWELLERY ★ CLOTHING ★ MILITARIA
ART ★ KITCHENALIA ★ BRIC A BRAC ★ SALVAGE ★ LIGHTING

**DECOR FOR UNIQUE & ECLECTIC TASTES...
SOMETHING FOR EVERYONE!**

REFRESHMENTS AVAILABLE ♦ **SEE YOU THERE!** ♦

Like and Follow us on @TheVintageTradingPost



WWW.THEVINTAGETRADINGPOST.CO.UK

Kirsten's Curiosities

Vintage / Antique / Preloved
Curiosities and Collectibles
Bought and Sold

Follow on Facebook /
Instagram / Twitter

www.kirstenscuriosities.com

Opening hours:
Tuesday - Friday : 10:00 - 5:00
Saturday: 10:00 - 4:00

24 Mill Street, Ottery St. Mary,
Devon, EX11 1AD



Nana's Attic

Home of Quality Furniture & Decorative Pieces

01404 891466 - 07923 973389

Vintage & Modern Furniture - Home Decor
Early Dinky & Corgi inc Military Models
Pictures - Mirrors - Lighting - Collectables

**RESTORATION WORK UNDERTAKEN
AT COMPETITIVE PRICES**

Open. 10am - 4pm Tuesday to Saturday

www.nanasattic.co.uk
contactnanasattic@gmail.com
18 Flightway Business Park, Dunkeswell EX14 4RD



Fountain Antiques



30+ Dealers
on 2 floors

**132 High Street,
Honiton, EX14 1JP.**



Tel: 01404 42074

A popular centre offering
furniture, garden and farm tools,
china, glass, clocks, militaria,
textiles and lace, prints,
paintings, jewellery, silver,
lighting and much more.

**Open Monday to Saturday
10am until 5pm**



The Old Chapel Antiques & Lifestyle Centre

Castle Street, Axminster, Devon EX13 5NP

Open: Monday - Friday 10am to 3pm

The Old Chapel is a charismatic Grade II listed building that hosts about 25 dealers offering a wide range of fascinating items for sale over 2 floors.

Telephone: 01297 639995

DOLPHIN ANTIQUES CENTRE

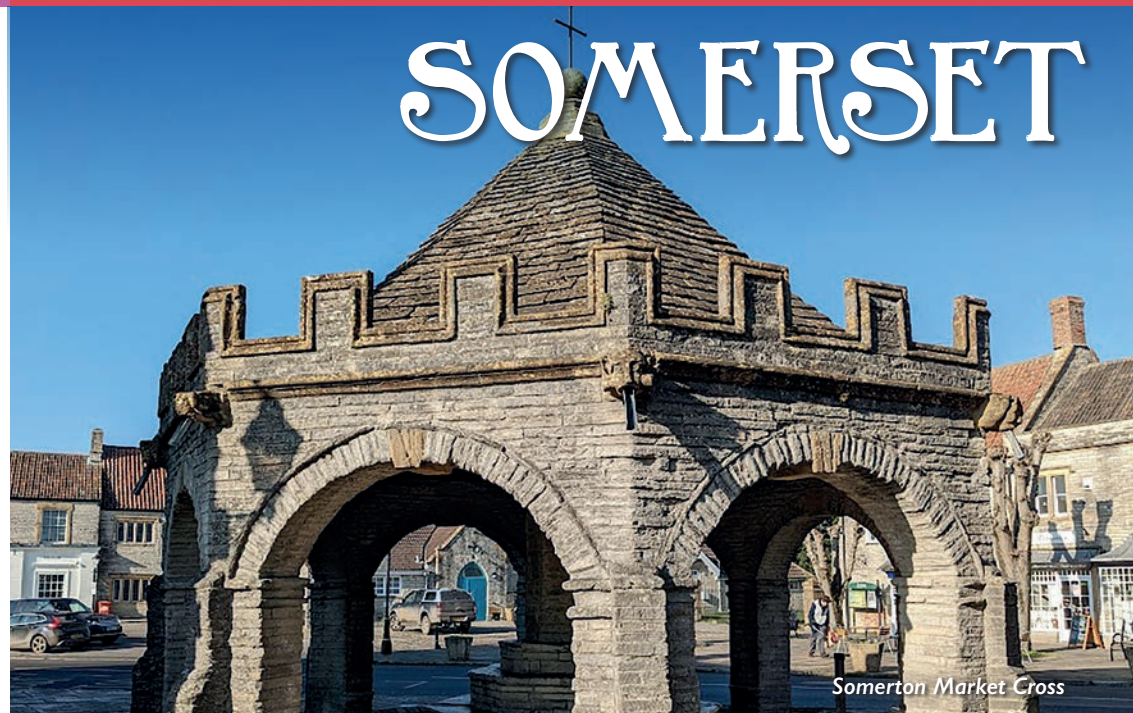
BEER, DEVON, Tel: 01297 24362

An Aladdin's cave of affordable antique, vintage and collectable items situated in the picturesque fishing village of Beer



OPEN: six days a week 10am to 4pm
(closed on Tuesdays)

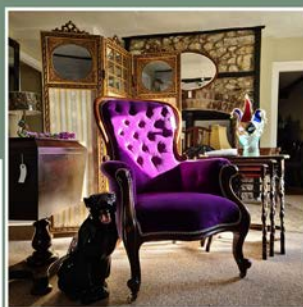
SOMERSET



Somerton Market Cross

BRAMBLEWOOD & THICKET

INTERIORS & COUNTRY LIVING



Tel: 07828 059951

Open Tues, Thurs and Sat 10am - 2pm
35 Queen Street | Seaton | EX122NY

BRAMBLEWOODANDTHICKET.CO.UK

INSTAGRAM @BRAMBLEWOODANDTHICKET



BEEDELL CORAM
8 Swain Street
Watchet
TA23 0AB

Antiques bought + sold
call ahead :
07981559601
andrew.coram@btinternet.com

Adorium Antiques and Curios

Rare and unusual antique and curios sought

in the Ancient Harbour town of
Watchet at 10 Swain Street TA23 0AB

Antiques • Vintage • Retro • Collectables



Valuations • Restorations • Repairs • Upholstery

Johnny 07557520138

Open Wed - Sat 10 to 5pm
or by appointment

www.adoriumantiques.com

CHATELAINE ANTIQUES

14 West Street, Dunster, Somerset TA24 6SN



Open Wednesdays to Saturdays
10.00am to 5.00pm

*Always an interesting selection of reasonably priced
traditional and unusual antiques*

jillpwilliams1@gmail.com
01643 821651

FULLER STUFF

SOMERSETS SHED FULL OF FURNITURE



OPEN EVERY SATURDAY 9AM - 3PM

UNIT 4 DYERS FARM, FITZHEAD ROAD, MILVERTON TA4 1RG

07786 227231

ANTIQUES & GARDEN WAREHOUSE

OVER 8000 SQFT - NEW STOCK DAILY



STUFF N NONSENSE

COURTLANDS INDUSTRIAL ESTATE
TAUNTON • SOMERSET • TA2 6NS



CONTACT US

01823 426994 OR 07711 884467

EMAIL
STUFFANDNONSENSELTD@GMAIL.COM



INSTAGRAM
STUFFNNONSENSEUK

Keith Richards Antiques

Ceramics, Glass, Silver, Furniture, Fine Art,
Arts & Crafts, Art Nouveau & Art Deco Specialist

Quality Antiques Bought and Sold



Tel: 07833 337051

Torweston Farm, Williton, Taunton. Somerset TA4 4LL

www.keithrichardsantiques.co.uk

enquiries@keithrichardsantiques.co.uk



SAVOY ART DECO EMPORIUM

Art deco 1920's/1930's furniture
Lighting & Collectables
All at affordable prices

Step back in time to the age of glamour

OPENING TIMES

Friday - Saturday 10am - 4pm

Sunday 11am - 4pm

or by appointment only

07506 726652

Unit 8a, Courtlands Industrial Estate
Norton Fitzwarren, Taunton TA2 6NS

 SavoyArtDecoCollectables



GRAHAM M. I. SPARKS

Antique Furniture Restorations, Carpentry & Joinery

Come visit
THE LONGROOM BARN

OPEN: 8AM - 6.30PM

Large Stock of Antique Furniture
from tables, chairs, cabinets,
benches, desks, lighting, painting,
mirrors

and so much more...



Phone: 01823 663636 - Website: grahamsparksfurniture.com

Long Room Barn, Tonedale Mill, Lowmoor, Wellington, Somerset TA21 0AN

SELWOODS ANTIQUE FURNITURE

Somerset's biggest selection.

MON TO SAT 10.00am - 4.00pm

Mary Street, Taunton,
TA1 3PE

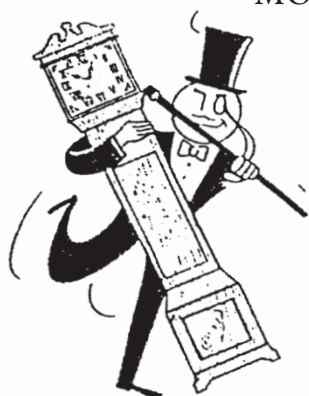
Tel: 01823 272780



Established
1927

**WELL
WORTH
FINDING!**

Customer car
park at rear



**We are a shop full of vintage, interior and antique
delights for the home and garden**

68-70 West Street, Bridgwater, TA6 3RW.
Visit Tuesday to Friday 10.30-5 and Saturday 9.30-5

Call us: 07860 837 680

Join our Facebook group:
[@Vintage West](https://www.facebook.com/ProwseAntiquesandInteriors)

PHOENIX RISING ANTIQUES

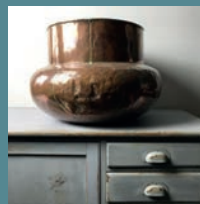
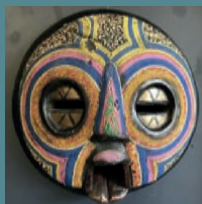


website: www.phoenixrisingantiques.co.uk phone: 07746 707006
email: phoenixrisingantiques@gmail.com instagram: phoenixrisingantiques

Two floors of decorative antiques and furniture Come and find us both at...

Unit I3 Rose Mills Industrial Estate, Hort Bridge, Ilminster TA19 9PS
Wed and Thur 10-3 Fri and Sat 10-4
Café, farm shop, gallery and artisan crafts also on site.

AIRS &
GRACES



website: www.airsandgraces.net phone: 07768 182088
email: airsandgraces@live.com instagram: airsgraces etsy: airsandgracesdecor

BUY GONES OF CHARD



Here at Buy Gones of Chard we pride ourselves at the quality and variation and most importantly value for money.

You never know what you will find as the stock changes frequently.

We do have some cabinets/shelves available to rent at very reasonable rates, please do come in to see us, we would love to see you.

07508 396385

22 HOLYROOD STREET CHARD TA20 2AH

REMAINS TO BE SEEN

ANTIQUES, VINTAGE
& COLLECTABLES

Well established shop in the heart of Ilminster Market Town

Buying & selling all types of Antiques, Collectables, Gold & Silver



WWW.REMAINSTOBESEEN.CO.UK

Monday - Saturday 9:30am - 4:30pm

TEL: 01460 53028

24, EAST STREET, ILMINSTER,
SOMERSET, TA19 0AJ

f Remains to be Seen
f Knot Just Pine Antiques Workshop

Nº.57

57 EAST STREET, ILMINSTER, SOMERSET TA19 0AW

**8 ROOMS OF ANTIQUES, VINTAGE
- AND SECONDHAND BOOKS**

...and a great little cafe

Homemade cakes and lunches • Proper Coffee • Real fires



TEL: 01460 54856 CAFE 10-3 pm Tuesday to Friday ANTIQUES 10-3 pm Tuesday to Saturday

LIKE US ON: Facebook @No.57eaststreet & Instagram 57eaststreet



CREWKERNE ANTIQUES CENTRE

*Antiques, Decorative, Silverware, Jewellery,
Vintage Vinyl, Furniture, Country Pine,
Ceramics, Antiquities & Gardenalia*



Call us on: 01460 77111

crewkerneantiques@yahoo.co.uk | www.crewkerneantiques.co.uk

Find us: **16 Market St, Crewkerne TA18 7LA**

We are open: Monday - Saturday, 10.00am - 4.30pm



*At the heart of the Antiques trade in
Crewkerne for over 30 years*



METHUSELAH
ANTIQUES & COLLECTABLES

Tel: 01460 712252



*We have a wide selection of interesting
antiques & collectables ranging from
high quality porcelain, stoneware & glass
to compact items of furniture, historical
ephemera & early vinyl & audio.*

methuselahantiques@gmail.com

20, Market Street, Crewkerne, Somerset, TA18 7LA

Castle Reclamation

• Fireplaces • Flagstones • Furniture • Oak Flooring

- Architectural Antiques • Wide Oak Flooring
- Hand carved natural stone fireplaces
- 16th & 17th Century style Furniture
- Oak & Painted Pine Kitchens
- Replica Blue Lias, Purbeck and Hamstone Flagstones



Parrett Works, Martock, Somerset, TA12 6AE Tel: 01935 826483

www.castlereclamation.com



LANGPORT VINTAGE MARKET

Since 2017

Second Saturday Monthly
February - December
10am - 4pm

Cocklemoor Car Park
Whatley, Langport, TA10 9RA

www.langportvintagemarket.co.uk

Kim Woods Vintage
Vintage Quarter, The Undercroft,
Langport, TA10 9PR
Thursdays, Fridays and Saturday 10-4pm

www.etsy.com/uk/shop/kimwoodsvintage



ELEVEN SQUARED 11 Market SQ Crewkerne
Somerset TA18 7LE
07855387843

elevensquaredsomerset.co.uk

11²

A veritable cabinet of curiosities



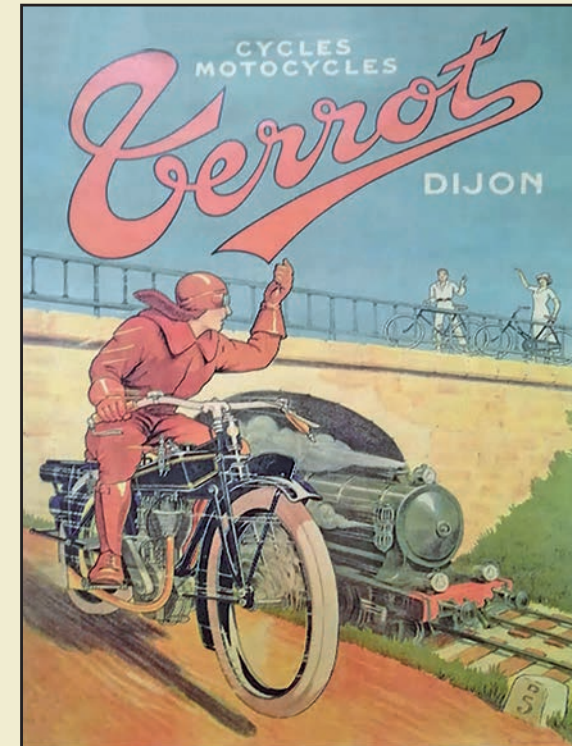
OPEN, WED-SAT OR BY APPOINTMENT

Curating the curious and unusual, sourcing the rare and the beautiful. From decorative pieces, antiques and object d'art to contemporary art.

Antiques Bazaar

A Great Centre for Antiques and Collectables

TRADING 7 DAYS A WEEK



The Old Textile Mill, South Street, Crewkerne. TA18 8AG

Tel: 01460 77121

f @AntiquesBazaars

www.antiquesbazaar.co.uk

WESSEX ANTIQUE BEDSTEADS

**Percombe (A303), Stoke Sub Hamdon,
Somerset TA14 6RD**

At Wessex Antique Bedsteads you will find one of the largest and most varied collections of Brass, Iron and Wooden Bedsteads in the UK from the Victorian and Edwardian eras with always more than 4000 bedsteads in stock.

We are able to offer quality made to measure, mattresses and bases in any shape or size and also offer a full restoration service and carry a wide range of bed spares.

We always have an interesting selection of other antique furniture on display.

Nationwide delivery and worldwide shipping available. We are easy to find right next to the A303.

Our opening hours are:

- Mon – Fri: 9am – 5pm
- Sat: 10am – 2pm

Sun & Bank Holidays by prior appointment

Email: info@wessexbeds.co.uk

Tel: 01935 829147

www.wessexbeds.co.uk

We look forward to seeing you soon...



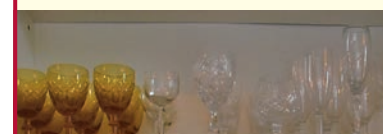
RICHARD DENNIS

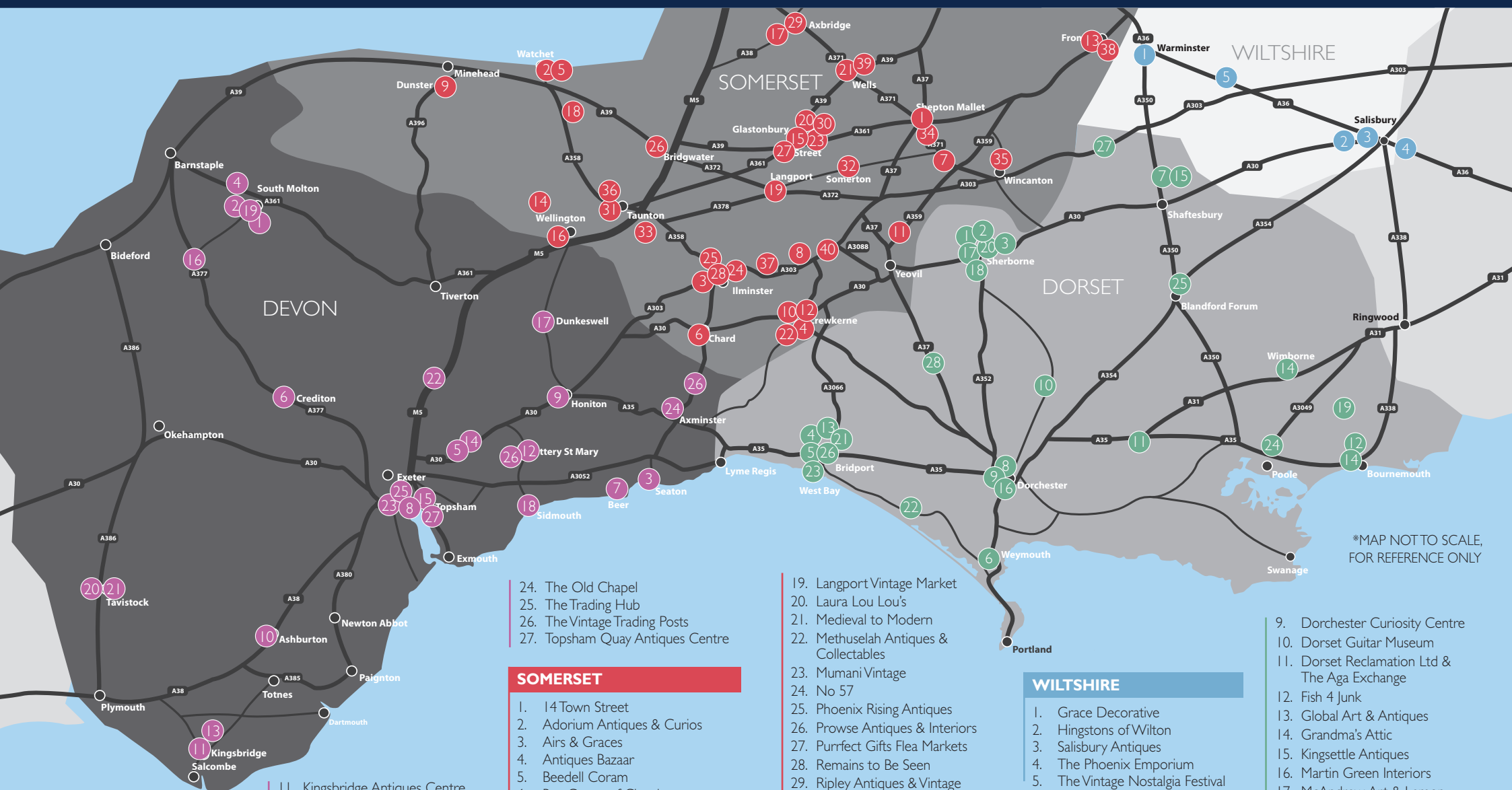
01460240044 THE GLASS SHOP 01460240347

Shepton Beauchamp TA19 0JT

On the Barrington Road

Open Monday - Saturday 10 till 4





*MAP NOT TO SCALE,
FOR REFERENCE ONLY

DEVON

1. Approximate Odds
2. Atlas
3. Bramblewood & Thicket
4. Brown's Antiques & Reclamation
5. Carradale Farm Antiques Ltd
6. Crediton Antiques Centre
7. Dolphin Antiques Centre
8. Exeter's Antiques Centre
9. Fountain Antiques
10. In A Nutshell

11. Kingsbridge Antiques Centre
12. Kirsten's Curiosities
13. M & H Antiques
14. McBains Antiques Centre
15. Mere Antiques
16. Murch's Antique Emporium
17. Nana's Attic
18. Sidmouth Antique Centre
19. Source for the Goose
20. Tavistock Pannier Market
21. Tavistock Vintage & Salvage Fair
22. The Antique Village
23. The Attic

SOMERSET

1. 14 Town Street
2. Adorium Antiques & Curios
3. Airs & Graces
4. Antiques Bazaar
5. Beedell Coram
6. Buy Gones of Chard
7. Castle Cary Antiques & Interiors
8. Castle Reclamation
9. Chatelaine Antiques
10. Crewkerne Antiques Centre
11. Curious Cow
12. Eleven Squared
13. Frome Reclamation Limited
14. Fuller Stuff
15. Glastonbury Reclamation
16. Graham M. I. Sparks
17. Indigo Sprout
18. Keith Richards Antiques

19. Langport Vintage Market
20. Laura Lou Lou's
21. Medieval to Modern
22. Methuselah Antiques & Collectables
23. Mumani Vintage
24. No 57
25. Phoenix Rising Antiques
26. Prowse Antiques & Interiors
27. Purrfect Gifts Flea Markets
28. Remains to Be Seen
29. Ripley Antiques & Vintage
30. Rogues' Gallery
31. Savoy Art Deco
32. Selwood House Antiques & Decorative Items
33. Selwoods Antique Furniture
34. Shepton Flea Market
35. Somerset Trading Barn
36. Stuff 'N Nonsense
37. The Glass Shop
38. The Vintage Bazaar
39. Vintage Somerset
40. Wessex Antique Bedsteads

WILTSHIRE

1. Grace Decorative
2. Hingstons of Wilton
3. Salisbury Antiques
4. The Phoenix Emporium
5. The Vintage Nostalgia Festival

DORSET

1. Acreman St. Auctioneers & Valuers
2. Artichoke
3. Antiques, Arts, Crafts Market
4. Bridport Antiques
5. Bridport's Historic Street Market
6. Cornucopia
7. Dairy House Antiques & Interiors
8. De Dannan

9. Dorchester Curiosity Centre
10. Dorset Guitar Museum
11. Dorset Reclamation Ltd & The Aga Exchange
12. Fish 4 Junk
13. Global Art & Antiques
14. Grandma's Attic
15. Kingsettle Antiques
16. Martin Green Interiors
17. McAndrew Art & Lemon
18. The Old Yarn Mills
19. Room 1553
20. Sherborne Antiques Market
21. The Alleyways
22. The Clock Work Shop
23. The Customs House
24. The Den
25. The Old Grainstore Emporium
26. Unit 83
27. Walton House Antiques Ltd
28. Wardon Hill Trading Post

ROGUES' GALLERY
 Vinyl, Clothing
 Local Arts, Vibes
 8A High St
 Glastonbury
 BA6 9DU
 Open 7 days
 01458 897249

 RoguesGlaston
 Rogues_Avalon

*Stylish
of
Somerset*

Flea Market
CRISPIN HALL
 HIGH STREET, STREET, BA16 0EZ
DATES FOR 2023
 01 APRIL
 03 JUNE
 05 AUGUST
 07 OCTOBER
 09 DECEMBER






WWW.PURRFECT-GIFTS.CO.UK
 HELLO@PURRFECT-GIFTS.CO.UK

mumanivintage
 CAREFULLY CURATED VINTAGE
 & PRE-LOVED CLOTHING
 86B High Street, Glastonbury, BA6 9DZ
mumanivintage@gmail.com
  mumanivintage

THE VINTAGE BAZAAR

www.thevintagebazaar.co.uk

Sat April 22nd:
 The Cheese and Grain,
 Frome, Somerset
Sat June 24th:
 The Corn Exchange,
 Devizes, Wiltshire
Sat Oct 28th:
 The Cheese and Grain,
 Frome, Somerset

LAURA LOU LOU'S
 Vintage & Retro Boutique
 16 Benedict Street Glastonbury BA6 9EX



**Vintage Clothing
 &
 Retro Homewares**

Tel: 07968 653594 Lauraloulousvintageandretro.co.uk
 @lauraloulousvintage  @lauraloulou's


www.glastonburyreclamation.co.uk
 find us on facebook and twitter
 01458 831122
info@glastonburyreclamation.co.uk



The Old Pottery, Northload Bridge, Glastonbury BA6 9LE
 Open: Monday to Saturday 08:30 - 17:30
 Bank Holidays 10:00 - 16:00

SELWOOD HOUSE ANTIQUES & DECORATIVE ITEMS
 FOR YOUR HOME & GARDEN



Call us
 01458
 897190

SOMERTON MARKET PLACE, (NEXT TO THE GLOBE), SOMERTON, SOMERSET, TA11 7LX

 **FURNITURE JEWELLERY COINS ART GARDENALIA** 

OPEN MONDAY TO SATURDAY 10-5PM SUNDAYS: POT LUCK

www.selwoodhouseantiques.co.uk Email: enquiries@selwoodhouseantiques.co.uk

CURIOUS COW ANTIQUES & RECLAMATION

NEWLY OPENED

Open Tuesday – Saturday 10am – 5pm
& Bank Holiday Mondays
Other times by appointment

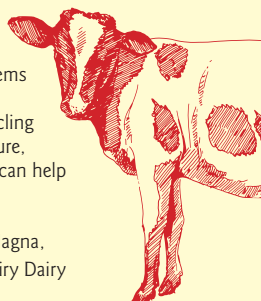
WHAT WE DO

Specialists in Rural antiques, salvage & vintage items for the home & garden.
Advisors on house clearance & reclamation/upcycling
Repairers & restorers of Antique & Vintage furniture, clocks, books and other items – just ask us if we can help

WHERE WE ARE

Just off the A359 between Mudford & Marston Magna,
sited with the Red Barn Farm Shop and The Repairy Dairy

Ever changing
stock to view



Address: **The Curious Cow Antiques & Reclamation,**
Hinton Farm, Mudford, Yeovil, BA22 8BA

Phone number: **07974 125785** Email: **Bartlettthinton@hotmail.com**

**SOMERSET
TRADING
BARN**
01963 33177

**@ KIMBERS'
FARM SHOP**



• Collectables • Antiques • Up Cycled • Art • Fabrics • Clothes • Gifts • Jewellery •

25 TRADERS OVER 2 FLOORS: Next To Kimbers Farm Shop | OPEN :Tuesday-Saturday 10-4pm
THE KITCHEN: A Cafe with pop up events | Between Bruton & Wincanton on the B3081

info@kimbersfarmshop.co.uk | @Somersettradingbarn | Charlton Musgrove, Wincanton BA9 8HD

The Giant SHEPTON FLEA Market

ROYAL BATH & WEST SHOWGROUND

Shepton Mallet BA4 6QN

SUNDAYS 2023

9:30am - 4pm

Entry: £5.00

April 9th

July 16th

August 13th

October 8th

December 10th

Inside Stalls from £60. (Must be Pre-booked)

Outside pitches from £40
on the gate on the day from 7am

Bookings/Enquiries 01278 784912

info@sheptonflea.com

www.sheptonflea.com

Spring Opening 2023!

Castle Cary Antiques & Interiors

*A collective of traders
offering beautiful, eclectic
antiques, style & inspiration
for the home.*

2 Market Place BA7 7AL

find us on Instagram

castle_cary_antiques

Opening hours: Mon-Sat 10-5

RIPLEY ANTIQUES & VINTAGE

A lovely little Antique shop and Coffee shop
situated in the Medieval Square of Axbridge



(Also now home to The Hidden Boutique –
high end high street pre-loved fashion)

#sustainabilityandcommunity

Ripley Antiques & Vintage
The Square, Axbridge, Somerset BS26 2AP

www.ripleyantiques.co.uk

ripleyantiques Ripley Antiques & Vintage

INDIGO SPROUT
INSPIRATION & RECLAMATION

BP Petrol Station (Behind)
Turnpike Rd (A38)
Lower Weare
Somerset BS26 2JE

Vintage and Reclaimed Furniture and Home Accessories
www.indigosprout.co.uk Tel: 07469 921261



14 TOWN STREET

Antiques - Silver - Jewellery
Bought and sold

Thursday Friday Saturday
9.30 - 2.00

Reckitt's BLUE

 @14_town_street Tel: 07933 390194 Shepton Mallet, BA4 5BJ



FROME RECLAMATION LIMITED

- ✓ Architectural Antiques
- ✓ Garden Ornament
- ✓ Traditional Building Materials

OPENING TIMES:

Mon - Fri : 8.00am - 5.00pm

Sat : 8am to 1pm

Sun and Bank Holidays: Closed

T: 01373 463919 / 453122

M: 07729 263949

E: info@fromerec.co.uk

W: www.fromerec.co.uk

Follow us on Instagram

 [frome.rec](https://www.instagram.com/frome.rec)

COME VISIT US AT:

Frome Reclamation Limited
Station Approach
Frome
Somerset
BA11 1RE

Vintage
SOMERSET

Vintage Fair hosted at the wonderful
Wells Town Hall,
Market Place,
BA5 2RB

from 9:30am
til 4pm

Dates for 2023
Sat 25th March
Sat 23rd September
Sat 4th November

hello@vintagesomerset.co.uk
www.vintagesomerset.co.uk



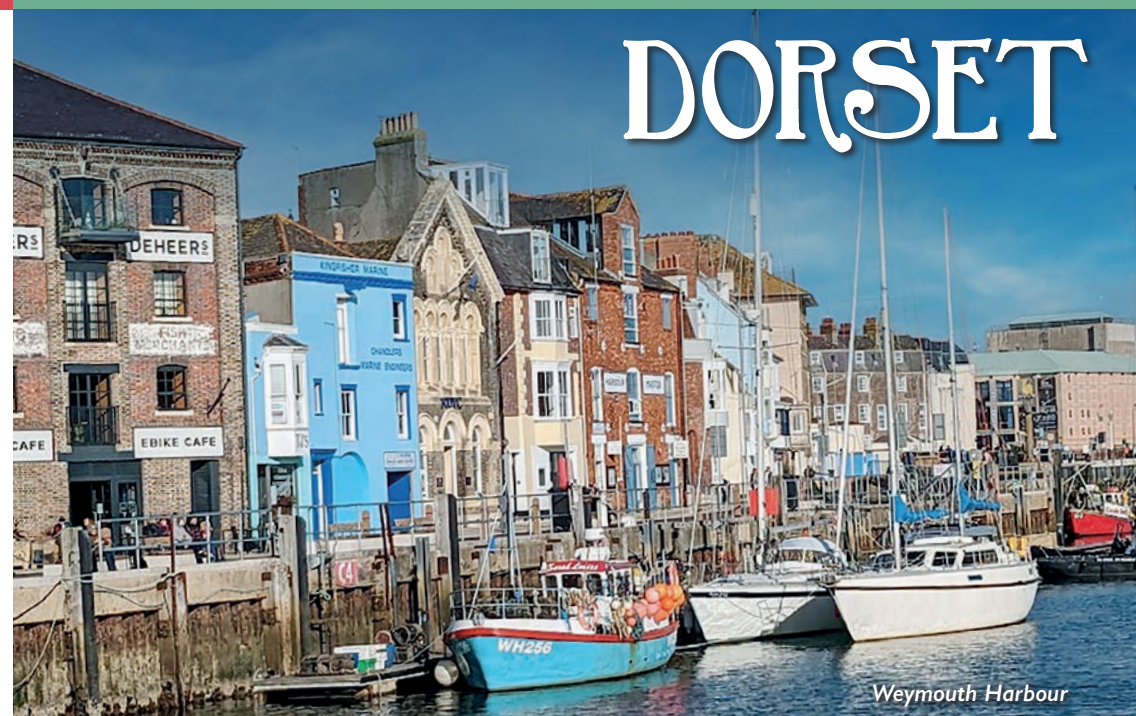
MEDIEVAL TO MODERN

Antiques, collectables &
contemporary furnishings

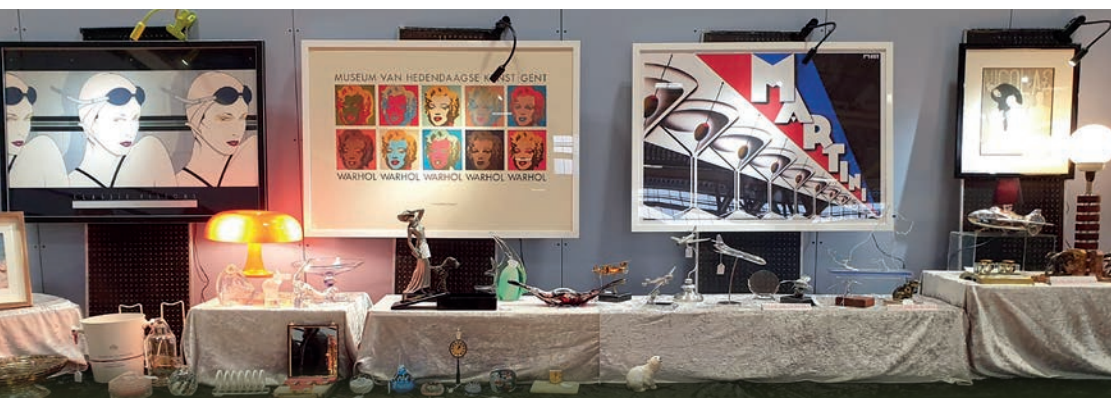
We also purchase individual items,
collections & carry out a sympathetic
& professional house clearance.

**NEW STORE IN
MILL STREET, WELLS**

Mark Livingstone - 07585 956540
mark.livingstone5@gmail.com



Weymouth Harbour



Grandma's Attic Fairs based in Bournemouth have now run quality antiques & collectors fairs across the South Coast since the mid 1980's.

They hold approx. 25-30 fairs a year across Dorset, Hampshire, West Sussex & Surrey.

Their larger fairs, that are held in Woking (170 stalls) & Eastleigh on the outskirts of Southampton (220 stalls) have stallholders from all the UK in attendance.

For all fair dates check out there advert on the back page of this publication or have a look at their website www.grandmasatticfairs.co.uk

Mac ART ndrew



Diverse mixture of antique,
vintage & contemporary art

Stunning array of retro
West German 'Fat Lava' pottery

Tel: 07720 896129

macandrewart@outlook.com

@ macandrewart

Lemon

#LOOKLIKEARIGHTLEMON



Stand out from the crowd...

An eclectic mix of unique pieces of
preloved designer and vintage garments.

Stunning hand sourced jewellery
and much more in store.

Tel: 01935 813743

@ looklikearightlemon

find us at: 81 Cheap Street, Sherborne, Dorset DT9 3BA



WALTON HOUSE ANTIQUES LTD

Open Monday to Saturday 9.30/5.30 inclusive

Walton House Antiques offers the discerning buyer an extensive range of fine quality antique furniture, French clocks and works of art, from our spacious 3,500 sq foot showroom in the centre of Mere, Wiltshire, just off the busy A303, with ample free parking.

www.waltonhouseantiques.co.uk info@waltonhouseantiques.co.uk

Call us on: **01747 860050**
or Nick **07900 430658** or Paul **07816 216645**

The Walton Building, The Square, Mere, BA12 6DL

Sherborne Antiques Market



42 dealers on one level

Open 7 days a week, 10am to 5pm, Sunday 11am to 4pm

Tel: 01935 713760

[instagram@sherborneantiquesmarket](https://www.instagram.com/sherborneantiquesmarket)

71 Cheap Street, Sherborne, Dorset DT9 3BA

THE OLD YARN MILLS

SHERBORNE • DORSET • DT9 3RQ

Open Monday–Friday 10am–5pm
Saturday by appointment
Ample Free Parking



UNIT 10
Wilkie
Antiques



Antiques & Decorative
@ wilkieantiques • 07531388233



UNIT 15
Studio YJ



Contemporary Art
victoriayj.com • 07833475342



UNIT 10+11
Molecula



Modern Design & Antiques
molecula.co.uk • 07810000097



UNIT 17
Holtby & Co



Antiques & Decorative
holtbyandco.uk • 07877240015

ACREMAN ST. AUCTIONEERS & VALUERS SHERBORNE

OPEN MON-SAT 10AM - 4.30PM

We hold monthly 2 day auctions of over 1,000 lots.

Our catalogue is available to view on easyliveauction.com & Saleroom.com.

We take in from single items to complete house clearances.



121, Acreman Street, Sherborne, Dorset. DT9 3PH

Tel - 01935 508764 Email - auction@acremanstreetantiques.co.uk



ARTICHOKE
SHERBORNE

Find us on Instagram

@arabella_sayer & @artichoke_sherborne

CALL US ON: 07854 383090

Email us on: arabella@artichokesherborne.co.uk

14 CHEAP STREET | SHERBORNE | DORSET | DT9 3PX

De Dannan ANTIQUES CENTRE

Two floors of Antiques, Vintage
items & Collectables for all tastes

**ANTIQUE & VINTAGE FURNITURE
DECORATIVE ITEMS**



27 LONDON ROAD, DORCHESTER,
DORSET, DT1 1NF

TEL. 01305 250066

Antiques, Arts, Crafts & More

Sherborne Digby Hall Monthly Market
NEXT TO THE LIBRARY , Hound St , DT9 3AA
Cafe, Free entry, Parking, Toilets

**Every 1st Saturday of the month,
March - Dec . 10am - 3pm**

Trade Enquiries please contact 07717 454643

BRIDPORT'S HISTORIC STREET MARKET

**Every Wednesday and Saturday is market
day in the vibrant town of Bridport**

With an amazing selection and variety of stalls along the three
main streets to browse and delicious food to enjoy there
are so many reasons to visit...

Bridport



your local
market

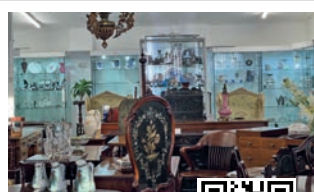
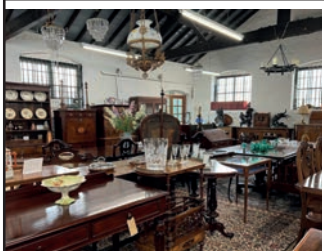


Further information call **01308 424901** or visit www.bridportandwestbay.co.uk




BRIDPORT ANTIQUES

Quite possibly the most extensive fine antiques showroom to open this century and now situated in Bridport's historic "Vintage Quarter". Displays range from showcases to complete room settings. We feel confident you will be pleasantly surprised and amazed.



Tel: 01308 425111 Email: info@bridportantiques.co.uk

or visit our online shop at: www.bridportantiques.shop

Bridport Antiques, The Tarring House, Unit 51 St Michaels Trading Estate, Bridport, Dorset DT6 3RR

UNIT 83

HOMES, GARDENS & INSPIRATION

LOTS OF HANDMADE WOODEN FURNITURE

UNIT 83

40 ST MICHEALS LANE,
BRIDPORT, DT6 3RB
(OPPOSITE WAITROSE CAR PARK)

CONTACT JULIE 07505 711 456

Also selling at Alleyways



The Alleyways

Antiques Centre

Over 40 traders in the Art & Vintage Quarter,
Units 52 & 53 St. Michaels Trading Estate, Bridport, Dorset DT6 3RR

Open 7 days from 10:00am

Telephone: 01308 425 111 or visit www.bridportantiques.co.uk



THE

CUSTOMS HOUSE

EMPORIUM

VINTAGE • ANTIQUE • RETRO • CRAFTS

VISIT US FOR A GREAT FAMILY DAY OUT ON
THE JURASSIC COAST

OVER 100 TRADERS • OPEN 7 DAYS A WEEK

NEW TRADERS WELCOME

Bev.beavis@customs-house.co.uk • 01308 422222

Space from £60 per month





WEST BAY • DORSET

Martin Green

INTERIORS

CLASSIC • CONTEMPORARY • COUNTRY







We offer carefully curated, antique and period pieces for the home. Open Tuesdays - Saturdays 10am until 4pm.
We can also arrange viewings by appointment.
Call 01305 267503 / 07587 046 055

63 High West Street, Dorchester, Dorset DT1 1UY
contact@martingreeninteriors.co.uk
www.martingreeninteriors.co.uk

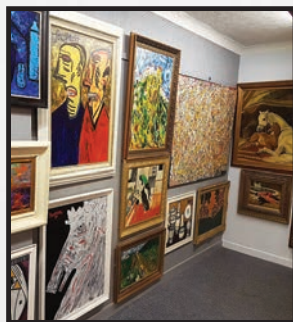
* ANNOUNCING *

Another great reason to visit BRIDPORT.....

GLOBAL ART & ANTIQUES

St Michaels Trading Estate DT6 3RR
(Next door to Ocean Bathrooms)

STUNNING ART FOR SALE
BILLY MUMFORD FORGERIES EXHIBITION
ANTIQUES AND CURIOS TOO
HEAR ABOUT BILLY'S EXPLOITS



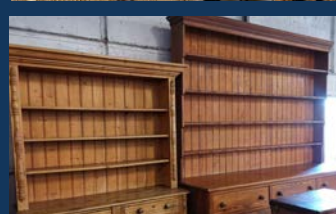
WE BUY ART & ANTIQUES ETC
OPEN WEDNESDAY TO SUNDAY 10 TILL 4

www.globalartandantiques.com - 07894 555107



DORCHESTER CURIOSITY CENTRE

- FURNITURE - ANTIQUES -
- VINTAGE CLOTHING - RECORDS -
- COLLECTABLES - TEXTILES -



*"The perfect place to find a unique gift
or that one-off piece of furniture."*

We have over 70 traders across 12,000sq feet and at the heart is our Curiosity Centre Café offering a delicious menu of tasty delights.



Enjoy free wi-fi and ample parking as you browse beautiful antiques, retro items, quality crafted shabby chic, glassware, ceramics and thousands of curios & collectables.

Open 7 days a week
Mon – Sat 9-5.30 and Sunday 10-4

The Old Bus Depot, Grove Trading Estate,
Dorchester DT1 1ST
Tel. 01305 251886
Email: dorchcuriocentre@live.co.uk
Facebook@[dorchestercuriocentre](https://www.facebook.com/dorchestercuriocentre)
Instagram@[dorchcuriocentre](https://www.instagram.com/dorchcuriocentre)

We also buy items and offer a delivery service across Dorset.

Dorset Reclamation Ltd

*High Quality Reclaimed Traditional Building
Materials and Architectural Antiques*

Old Flagstones,
Aga Cookers,
Terracotta Floors,
Pine, Oak and
Elm Floorboards,
Oak Beams and
Pine Doors,
Period Bathrooms,
Butler's Sinks,
Fireplaces and
Architectural and
Garden Antiques



Cow Drove, Bere Regis, Dorset BH20 7JZ
Tel: 01929 472200

Email: info@dorsetreclamation.co.uk
www.dorsetreclamation.co.uk
DELIVERY ARRANGED

The Aga Exchange



Tel: 01929 472200

Reconditioned Aga Cookers and
Re-enamelling Service Electric
Conversions

OIL – 13AMP ELECTRIC

www.theagaexchange.co.uk

**THE MUSEUM THAT LET'S
YOU PLAY WITH THE
EXHIBITS***

*MOST OF THEM

**DORSET
Guitar
Museum**

Unit A, Carters Barn Farm, Piddlehinton,
Dorchester. DT2 7TH. 01300 348863

If you want to help support our growing
collection of guitars, please visit:
dorsetguitarmuseum.com

**GREAT
GUITAR
GIVEAWAY**
Helping fund the collection while giving
you the chance to win great guitars
greatguitargiveaway.com

DAIRY
HOUSE
ANTIQUES+
INTERIORS

📍 Station Road, Semley, SP7 9AN

☎ 01747 853317

✉ shop@dairyhouseantiques.com

🌐 dairyhouseantiques.com

🕒 Open 10-5 Mon-Sat,
11-4 Sun & Bank Hols

📷 @dairyhouseantiques



Dairy House Antiques & Interiors is a large antiques centre featuring more than 30 dealers. There is a wide range of items for sale covering many styles and eras. We have everything from early Georgian to Mid-century pieces, silver, ceramics, textiles, rustic and painted furniture, lighting, books, soft furnishings, rugs, jewellery, gardenalia, art and more.



WARDON HILL TRADING POST

A37 DORCHESTER - YEOVIL DT2 9PW

Tel : 01935 83069

ANTIQUES, VINTAGE, COLLECTABLES,
CRAFT & SO MUCH MORE...

OVER 60 TRADERS, THE CABIN CAFÉ
& GARDEN CENTRE



OPEN 7 DAYS A WEEK

WHEELCHAIR ACCESSIBLE & DOG FRIENDLY

SPACE AVAILABLE TO RENT

the old GRAIN STORE emporium

Vintage, antique,
retro, upcycled,
artisan & tearoom

07745 477 795

theoldgrainstoreemporium@outlook.com

OPEN

follow us on



Tuesday to Saturday - 10am to 5pm
& 1st Sunday of month - 10am to 4pm

The Grainstore, Shaftesbury Lane,
Blandford Forum DT11 7EG

ROOM 1553

WE BUY & SELL
VINTAGE, ANTIQUES, COLLECTABLES,
RETRO, GARDEN STATUES & MORE

Opening Hours
Monday – Saturday: 10 am - 4:30 pm
Sunday: 10 am - 4 pm

FIND US AT:
Room 1553 (Baskets and Blooms Garden Centre)
392 Christchurch Road
West Parley, Ferndown
BH22 8SW

Free Parking

Email us: room1553vintage@gmail.com
Follow us on Facebook

Fish4Junk

Buy Sell Source

We're Fish4Junk, a family run business based on the sunny South Coast. We buy, sell and source quality vintage items from 1950s to 1980s.

Visit our shop:

Fish4Junk
Mayfield Buildings
933 Wimborne Road
Moordown
Bournemouth
BH9 2BN

Connect with us:



07597 699343



vintage@fish4junk.co.uk



fish4junk.co.uk



instagram.com/fish4junk




facebook.com/fish4junk

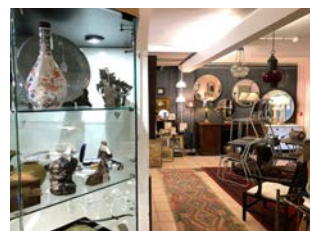
Do you have any of these items?

Record collections, furniture, sideboards, cabinets, chest of drawers, sofas, chairs, artwork, signs, Scandinavian glass and ceramics. Brands such as Ladderax, Ercol, G-Plan, Stag, Merrow Associates, Heals, Frem Rojle, Ernest Race, Habitat and early Ikea.

We buy single items, collections and we do house clearances.



24 traders in one location
 Open: Mon - Sat 10am - 3pm
 65 St Mary Street, Weymouth,
 Dorset, DT4 8PP
 Telephone Caroline 07711 791579
 Also handbags, evening, prom & wedding dresses



Kingsettle Antiques

TELEPHONE: 01747 850467
 EMAIL: KINGSETTLEANTIQUES@GMAIL.COM

WWW.KINGSETTLEANTIQUES.CO.UK
 STATION ROAD, SEMLEY, SHAFTESBURY, SP7 9AH

Large Antiques Centre Selling a Huge Amount of Varied & Interesting Items

OPEN MONDAY TO SATURDAY 10AM - 5PM, SUNDAY 11AM - 4PM OPEN BANK HOLIDAYS 11AM - 4PM

All Antiques, Gold, Silver & Chattels Wanted - House Clearances Undertaken

THE DEN

ANTIQUES • VINTAGE • RETRO

COME AND VISIT OUR
 EXTRAORDINARY EMPORIUM ON
 THE BEAUTIFUL SOUTH COAST
 FIND US HERE - BH11 8NX

WE ARE FULL TO THE BRIM OF INTERESTING & WONDROUS
 FINDS, HOUSING MORE THAN 100 INDIVIDUAL TRADERS.
 PLUS THE • KITCHEN DELICIOUS HOME COOKED FOOD & DRINK

SAY
 HELLO

TEL 01202 573190
 THEDENEMPORIUM@OUTLOOK.COM

UNIT 9, 11-15 FRANCIS AVENUE,
 BOURNEMOUTH, DORSET, BH11 8NX

OPEN 7 DAYS A WEEK FREE PARKING
 FURRY FRIENDS WELCOME

Like and follow us

f t i

**THE
CLOCK WORK
SHOP**
— DORSET & HAMPSHIRE —

Unrivalled
collection
of clocks,
barometers
& furniture

**Fine Antique Clocks
and Furniture**

Tel: 01305 873852
www.dorsetantiqueclocks.co.uk

Visit our large showroom:
West Yard Barn, West Street, Abbotsbury, Dorset DT3 4JT

BRITISH WATCH AND CLOCKMAKERS' CLUB
FOUNDED 1907
MEMBER



**SALISBURY
ANTIQUES
CENTRE**

www.salisburyantiquescentre.com
94 Wilton Road, Salisbury, SP2 7JJ
Tel + 44 (0) 1722 410 634

Find us on:
facebook

Find us on:
Instagram

THE PHOENIX EMPORIUM

RETRO, HAND-CRAFTED, COLLECTABLES



THE PHOENIX EMPORIUM has over **100 individual traders** selling an ever-changing selection of eclectic items. Safely spread over **two floors** in our spacious **11,000 sqft** store, we are your destination shopping experience. From antiques to modern day collectables, hand-made and upcycled, jewellery, vinyl, clothing, books and even furniture, we've got it all.

Don't forget to treat yourself to some of the delights on offer at the **Curio Coffeehouse** located on-site. Boasting a mouth-watering selection of **freshly baked cakes** and **hot snacks** alongside our delicious range of coffees and teas, with indoor and outdoor seating, it is the perfect pit-stop no matter what the weather, whilst you enjoy a busy day of shopping!



ARE YOU LOOKING FOR AN OUTLET FOR YOUR OWN BUSINESS?

Whether you are just starting out or looking to expand an existing venture, why not pop in and talk to us about our competitive monthly rental rates. With real time access to sales, no costly overheads and fully managed 7 days per week, The Phoenix Emporium is an affordable option for those looking to run a business of their own.

FIND US AT:

115 Tollgate Road, Salisbury, SP1 2JG

☎ 01722 330589

- ✓ Open 7 days a week
- ✓ Customer toilets
- ✓ Plenty of free parking onsite
- ✓ Dog friendly

OPENING HOURS:

Monday - Friday: 10.00am - 5.00pm
Saturday: 9.30am - 5.00pm
Sunday: 10.00am - 4.00pm

Stay up-to-date and follow us on



Hingstons of Wilton

Antique dealers and retailers established in 1976

Visit **Hingstons of Wilton**, and discover the wealth of choice available to the purchaser of quality Antique Furniture.

We specialise in Antique oak dressers, Antique dining tables and Antique Desks.



Telephone: **01722 742 263** | **07887 870569**

Email: **nick@hingstons-antiques.co.uk**

Website: **www.hingstons-antiques.co.uk**

Opening Times

Monday - Friday: 9.00am - 5.00pm
Saturday: 10.00am - 5.00pm
Sunday: Closed

Find us at:

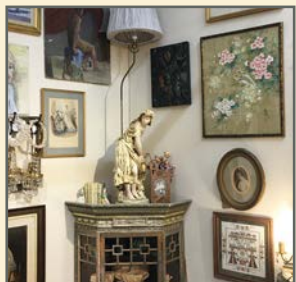
Hingstons of Wilton, The Old Bell House,
2 Shaftesbury Road, Wilton, Salisbury, SP2 0DR



Grace Decorative

Decorative antiques & vintage

Opening Hours:
Tues, Thurs, Friday & Saturday 10-4
Other times by arrangement | Parking next to shop



Mobile: 07912 359770 | Shop: 01985 213208
www.gracedecorative.co.uk
IG: @gracedecorative

9 Chinn's Court (Off Weymouth Street)
Warminster BA12 9AN Wiltshire

WANT TO JOIN US NEXT YEAR?

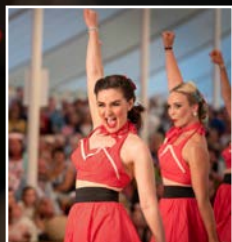


NEXT TIME: 2024
HELLO@THEANTIQUESTOURIST.COM
WWW.THEANTIQUESTOURIST.COM

VINTAGE NOSTALGIA FESTIVAL

2ND, 3RD & 4TH JUNE 2023

MAKE
MEMORIES
WITH US!



Pictures by Rob Webster

WWW.VINTAGENOSTALGIAFESTIVAL.CO.UK



Venue: Stockton Park, Stockton, Wiltshire

CARRADALE FARM ANTIQUES LTD

“SIMPLY UNMISSABLE!”

The Antiques Complex - EX5 2BA
Adjacent to Exeter Airport (Next to McBains).
Tel: 01392 447082 Mobile: 07967 447082
Email: jontredant@aol.com

www.carradalefarmantiquesltd.com

Grandma's Attic

Antiques & Collectors Fairs

Sun 12 Mar – Westgate Centre Chichester PO19 1RJ

Sun 2 Apr – The Grange Centre Midhurst GU29 9HD

B/H Mon 10 Apr – Allendale Centre Wimborne BH21 1AS

B/H Mon 10 Apr – Places Leisure, Eastleigh, SO50 9NL

Sun 7 May – Westgate Centre Chichester PO19 1RJ

Sun 14 May – Woking Leisure Centre GU22 9BA

Sat/Sun 20/21 May – The Pavilion Bournemouth BH1 2BU

B/H Mon 29 May – Allendale Centre Wimborne BH21 1AS

Sun 4 June – The Grange Centre Midhurst GU29 9HD

Sun 27 Aug – Allendale Centre Wimborne BH21 1AS

B/H Mon 28 Aug – Places Leisure, Eastleigh, SO50 9NL

Sun 10 Sept – The Grange Centre Midhurst GU29 9HD

Sun 24 Sept – Village Hall Brockenhurst SO42 7RY

Sun 8 Oct – Woking Leisure Centre GU22 9BA

Sun 15 Oct – Westgate Centre Chichester PO19 1RJ

Sat/Sun 21/22 Oct – The Pavilion Bournemouth BH1 2BU

Sun 5 Nov – The Grange Centre Midhurst GU29 9HD

Sun 26 Nov – Allendale Centre Wimborne BH21 1AS

Sun 3 Dec – Westgate Centre Chichester PO19 1RJ

Sun 10 Dec – Woking Leisure Centre GU22 9BA

NYD 1 Jan 24 – Places Leisure, Eastleigh SO50 9NL

For all updates, including stallholder booking information, please check our website or contact Chris on 01202 779564 / 07960 502508

Email: info@grandmasatticfairs.co.uk

The management reserve the right to refuse admission

www.grandmasatticfairs.co.uk