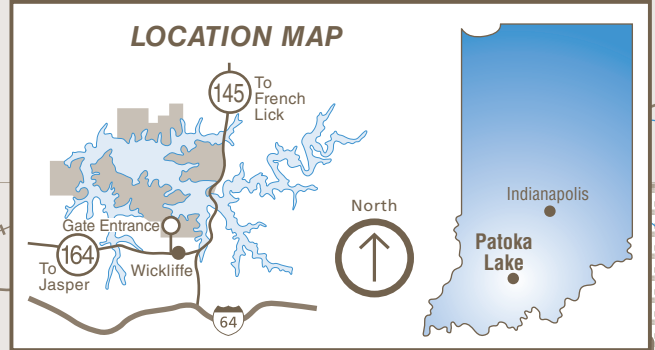
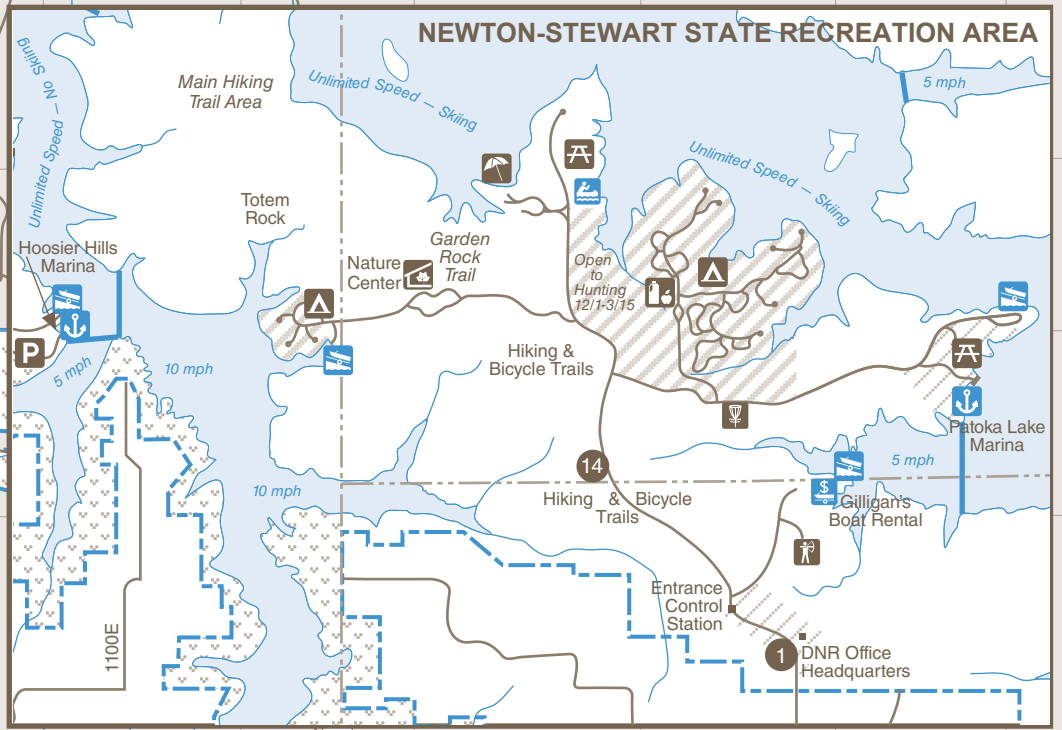
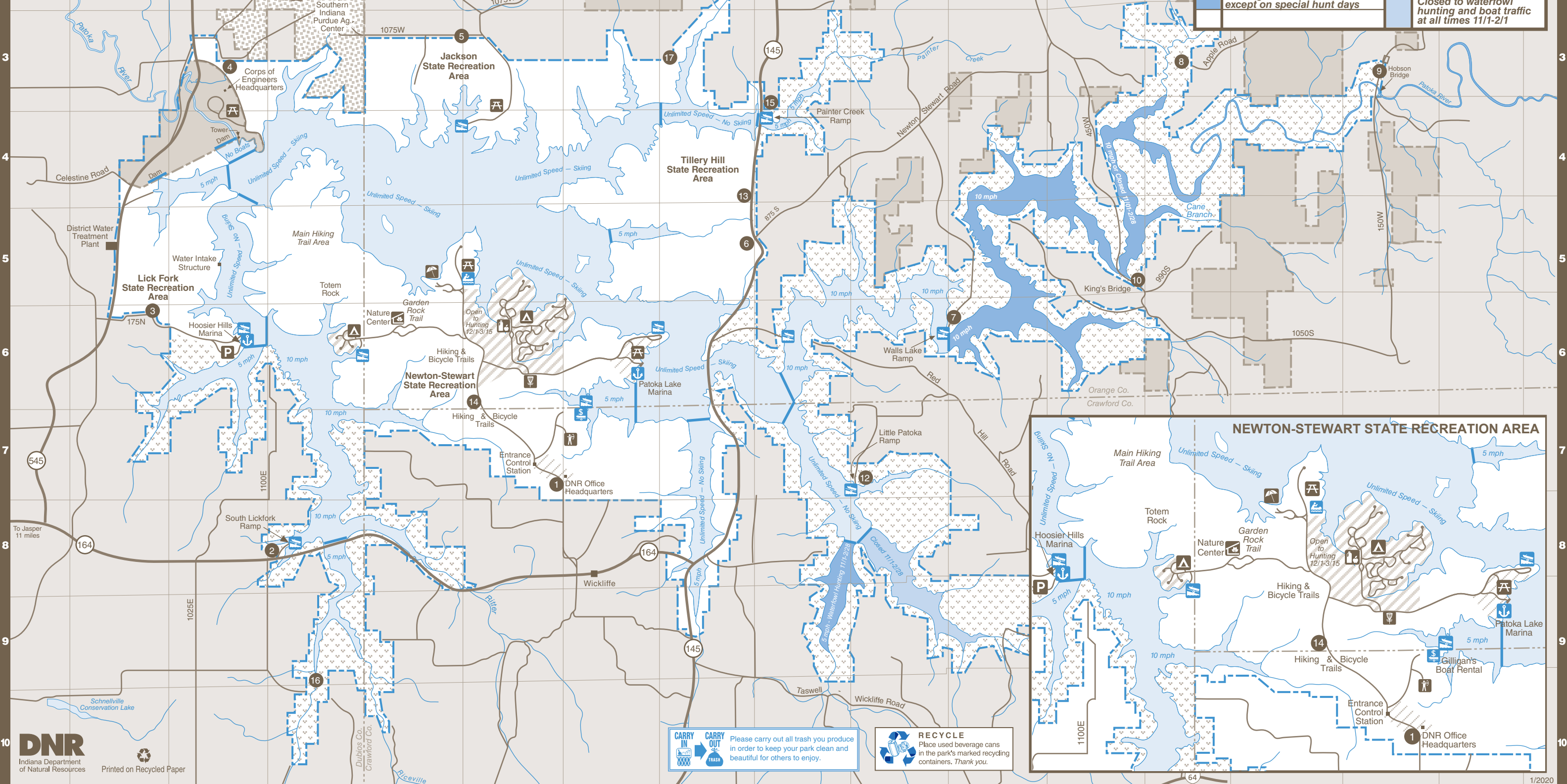


PATOKA LAKE

3084 North Dillard Road • Birdseye, IN 47513 • (812) 685-2464
26,000 acres - 8,800-acre lake
Established 1980



LEGEND			
	Boundary		Picnic Area
	Road		Campground
	Hunting - 12/1-3/15		Camp Store
	National Forest/USACE Land		Boat Launch
	Wildlife Management Area		Marina
	Safety Zone - No Hunting		Nature Center
	Small Craft Launch		Beach
	Buoy Markers - Zoning		Hunter Sign-in Stn.
	Disc Golf		Boat Rental
	W.R.A.: Closed to waterfowl hunting and boat traffic 11/1-2/1 except on special hunt days		Archery
			Closed to waterfowl hunting and boat traffic at all times 11/1-2/1



DNR
Indiana Department of Natural Resources
Printed on Recycled Paper

CARRY IN CARRY OUT
Please carry out all trash you produce in order to keep your park clean and beautiful for others to enjoy.

RECYCLE
Place used beverage cans in the park's marked recycling containers. Thank you.

Please let wild animals remain wild. Feeding deer is prohibited. Feeding of wild animals can result in harm to both animals and people. Animals who depend on handouts become a nuisance to visitors and a danger to themselves. Please lock up all food and coolers inside cars or campers. Roll up car windows tightly.

Visitors shall observe the following rules, which are designed to fulfill the purposes for which the state operates reservoir properties, namely, to manage these areas for the enhancement of wildlife and for the public's use and enjoyment.

THIS IS YOUR LAKE

As you leave the Nature Center on the main trail, you will walk over a ridge of sandstone that some say was laid down 325 million years ago by a huge river from the northeast that dumped its load of sand and silt into a shallow tropical sea. (You drove between outcroppings of this Wicokittie Formation as you approached the Nature Center.) As the trail begins to traverse along a more northerly ridge system, the Wicokittie Formation abruptly ends, and a younger sandstone, the Mansfield, takes over. This Pennsylvania-aged sandstone was laid down by a river back when dragonflies with nearly 3-foot wingspans and salamanders 15 feet long inhabited the lush fern forests of the time. The best exposure of Mansfield sandstone along our trail system is Totem Rock, which exhibits the pocked honeycomb weathering typical of most sandstones. It also displays broad cross-bedding, which appears as intersecting "wood grain" patterns in the stones. Iron and manganese stain the rock red and brown, while a white crust of calcium sulfate (gypsum), potassium nitrate (saltpeter) and possibly epsom salts occurs on the rock face.

TOTEM ROCK GEOLOGY

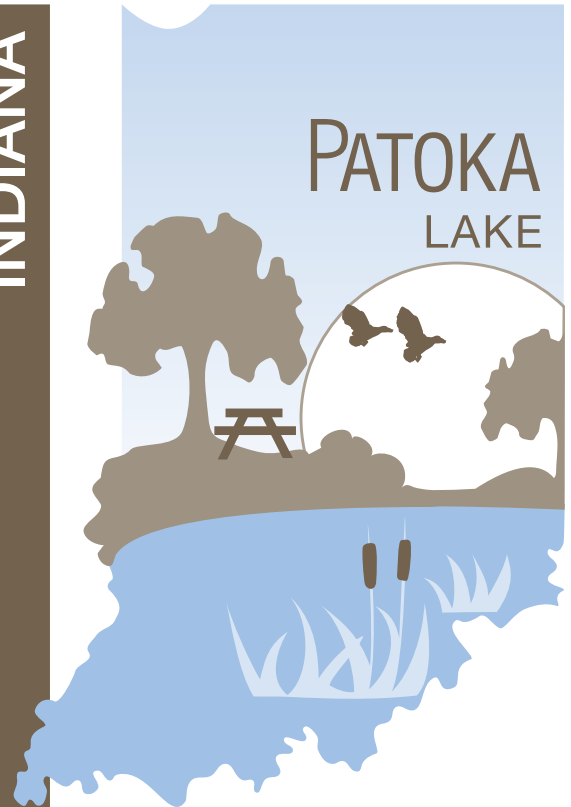
Patoka Lake provides flood control, water supply, and general recreation and fish-and-wildlife opportunities. The lake forms an integral unit of the Ohio River Basin comprehensive plan and reduces flood stages downstream from the dam. Patoka was developed in accordance with a long-range program and provides for a beneficial use of reservoir lands, fish-and-wildlife resources, and an opportunity for outdoor activities on a large body of water.

Patoka Lake was authorized by the Flood Control Act of Oct. 27, 1965. Construction began in July 1972, with the dam completed in January 1979, and initial recreational facilities completed in December 1980.

PURPOSE AND PROJECT HISTORY

DNR Indiana Department of Natural Resources

INDIANA



Patoka Lake, the second-largest reservoir in the state, is located in Dubois, Crawford and Orange counties in southern Indiana on the Patoka River. Patoka Lake is accessible from State Road 164 along the southern edge of the property, State Road 145 running north and south along the eastern edge of the lake, or State Road 56, on the northern edge of the lake.

The purchase area of the Hoosier National Forest is located adjacent to Patoka Lake. The surrounding area of the lake consists of rolling topography, heavily wooded sections and deep draws and has retained a rustic and rural appearance. During their annual migration, bison created well-worn paths through the dense forests that served as the first roads of early settlers. A famous resort hotel located in French Lick established in the 1800s gained international recognition as a health resort primarily due to the mineral springs in the area. Numerous caves lie to the east of Patoka Lake. The scenic rock outcroppings, acres of timberland, and rich history of this area provide an outstanding place for sightseeing and recreation.

stateparks.IN.gov

© 12/2018 Indiana Department of Natural Resources

ACTIVITIES AND FACILITIES cont.

SHELTERS—Reservations are available for shelters through the Central Reservation System. Areas with most sites containing tables, grills, toilet facilities and shelter. Accessible sites available.

PICNIC AREAS—Picnicking is available in several areas with most sites containing tables, grills, toilet facilities and shelter. Accessible sites available.

MARINA—Two marinas are located on Patoka Lake to serve your boating needs—Patoka Lake Marina on the west side of the lake in the Lick Fork SRA, and Hoosier Hills Marina in the Newton-Stewart SRA, and Hoosier Hills Marina on the west side of the lake in the Lick Fork SRA. These marinas are operated by concessionaires for the State to provide fuel, rentals and a full range of amenities for your boating pleasure.

INTERPRETIVE NATURALIST SERVICE—Explore the world of natural resources and Patoka heritage while enjoying interpretive and recreational programs. Seasonal program schedules are available online at InterpretiveServices.IN.gov or call (812) 685-2447.

Safety Zones: Campground Safety Zones are open to hunting Dec. 1 until March 1.

Bonus County Antlerless Permits—contact property office for current quotas.

HUNTING—Woodland game and waterfowl are available for the avid hunter during open seasons. Deer and squirrel are abundant in the area. All hunters are required to register at a hunter check-in station.

FISHING—The lake is heavily stocked with bass, bluegill, catfish, redear, crappie and walleye. A state license is required and available at the office.

CAMPING—Campsites include 450 Electric sites with asphalt-surfaced pads, electricity, water, flush toilets, hot water and showers, a camp store, fish-cleaning station and trailer dump station; and 45 primitive sites. There is a fisherman campground designed primarily to serve anglers and primitive campers. Water is available in the immediate area with pit toilets located at convenient spots. Youth Tent camping is available. A launch ramp is also located within the campground. Occupancy limited to 14 consecutive nights. Reservations available through the Central Reservation System.

BOAT RAMPS—Ten launch ramps are located at various points around the lake. Two major ramps are located within Newton-Stewart SRA.

BEACH—Swimming is available during open hours Memorial Day through Labor Day. A modern bathhouse provides showers, dressing facilities, restrooms, and food concessions.

RESTROOMS—Ten launch ramps are located at various points around the lake. Two major ramps are located within Newton-Stewart SRA.

BEACH—Swimming is available during open hours Memorial Day through Labor Day. A modern bathhouse provides showers, dressing facilities, restrooms, and food concessions.

ACTIVITIES AND FACILITIES

CENTRAL RESERVATION SYSTEM



Reservations for all types of camping, family cabins, and shelters at state parks, reservoirs and forests can be made online or by calling toll-free. Call: **1-866-6campIN** (1-866-622-6746) Online: **camp.IN.gov**

Reservations for the Indiana State Park Inns and Inn-operated cabins can be made online or by phone. Call: **1-877-lodges1** (1-877-563-4371) Online: **IndianalInns.com**

FOR MORE INFORMATION



Write: Patoka Lake
3084 North Dillard Rd
Birdseye, IN 47513
Call: 812-685-2464 (Office)
812-685-2447 (Nature Center)
Online: on.IN.gov/patokalake

SPECIAL NOTE

Receipts from admission and service charges are used to help defray the operation and maintenance costs of the lake. List of fees available in the main office.

DNR Law Enforcement Dispatch
(24 hour) 812-837-9536



Please carry out all trash you produce in order to keep your park clean and beautiful for others to enjoy!

@INdnrstateparks andreservoirs @indianadnr @INDNRstateparks

See everything Indiana State Parks has to offer at stateparks.IN.gov.

OUTDOOR INDIANA Subscribe to Outdoor Indiana magazine today, Visit OutdoorIndiana.org or call 317-233-3046.

The programs, services, facilities, and activities of the Indiana Department of Natural Resources are available to everyone. DNR prohibits discrimination on the basis of race, color, national origin, age, sex, or disability. If you believe that you have been discriminated against in any program, activity, or facility as described above, or if you desire further information please write to: Department of Natural Resources, Executive Office, 402 W. Washington Street, W256, Indianapolis, IN 46204, (317) 232-4020.

Interpreter-Conducted Walks—Join us for scheduled walks and hikes that may last 30 minutes or three hours. These walks are an enjoyable way to see the Reservoir, learn about nature and history, and meet other people.

PLEASE STAY ON MARKED TRAILS.

Garden Loop Trail
Moderate

A short loop trail begins just across from the Nature Center's front door. Try this trail if your time is limited and rock overhangs, ferns and pines sound inviting. The trail can be hiked in 30 to 45 minutes, but is hilly. Demonstrations include food plots, protective cover management techniques used on the property. Habitat requirements of wildlife as well as wildlife A loop trail begins at the Nature Center. Illustrates

Wildlife Management Demonstration Trail
2 mile Moderate

This loop trail begins at the Nature Center and well maintained, but has a limited number of signs along the way. Average hiking time is three to four hours. Many visitors enjoy walking to Totem Rock, a large rock shelter that was used by Native Americans and early settlers. "Short cuts" back to the Center are available for those familiar with maps and hiking. A "Birdwatching Spur" is available on the far north end of the peninsula.

Main Trail
6.5 miles Rugged

Because of size limitation, locations are marked but actual trails are not shown on this map. Trails listed above are in the Newton-Stewart SRA. Trail brochures are available at the Nature Center.

DESCRIPTION OF HIKING TRAILS

NATURE CENTER—Located in the Newton-Stewart SRA, the Nature Center is open year-round for programs and special events. The interior contains nature and heritage displays related to the property, seating for presentations and a bird observation room. Backyard wildlife habitat gardens and a raptor viewing area offer an outdoor experience for a leisurely stroll as well as a variety of programs.

RULES AND REGULATIONS

- No person shall conduct or participate in a fishing tournament on a reservoir property administered by the Division of State Parks without a proper license.
- No person shall launch, dock, or moor a watercraft or another floating device, except for approved periods and at sites designated by the DNR for those purposes. No person shall leave a watercraft unattended in a courtesy dock.
- Any firearm, BB gun, air gun, CO₂ gun, bow and arrow or paint gun must be unloaded or un-nocked and stored in a case or locked within a vehicle except in accordance with the terms of a one-day hunting permit and record card obtained from a hunter sign-in station and possessed by the person in the field for a specified date.
- A person who possesses a pet must attend the animal at all times and keep it caged or on a leash no more than 6 feet long.
- Vending or advertising without permission of the DNR is prohibited.
- Camping is permitted only in the campground. Youth groups must be under adult supervision.
- Fires shall be built only in designated places.
- Please comply with the Carry In/Carry Out trash policy in all day-use areas. Overnight guests must put waste in receptacles provided for that purpose.
- Motorists shall observe posted speed limits, 30 mph maximum and park only in designated areas.
- No person shall possess or consume an alcoholic beverage at a swimming beach.
- Drinking water should be taken only from pumps, hydrants or fountains provided for that purpose. This water is tested regularly for purity.
- Report lost or found articles to the property office.
- Feeding of wildlife is prohibited.
- Use of metal detectors is prohibited.

For a complete list of rules and regulations, inquire at property office.

DNR PROPERTIES NEARBY

- Ferdinand State Forest**—boating, boating ramps, boat rental, camping, fishing, hiking, hunting, group camp, mountain biking, play/sports area, picnic area, shelter house, swimming beach, trapping

Pick up an Indiana Recreation Guide for more information.