



The 1951 Chapel/Office at the Market Street entrance of Riverview Cemetery sits on the site of the original superintendent's home. Non-functional since 2000, it was uninhabitable by 2009 when FHRC assumed ownership. The Board of Directors, volunteers, pro bono partners, and paid contractors have been caring for the building and fixing problems that are preliminary to the final major phase of renovation.

**VOLUNTEER PROJECT**

September 12  
9am – noon

BEAUTIFY  
3 ENTRANCES

- Trim hedge by flags
- Weed & mulch: hedge, signs, street trees
- Clear trash by fence & bus stop

Sign in by flagpoles at Market St. entrance

Snacks & beverages provided

Community Service Certificates available

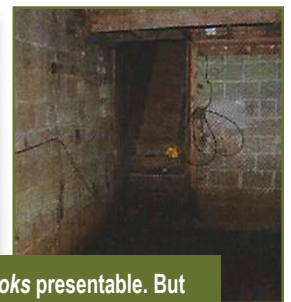
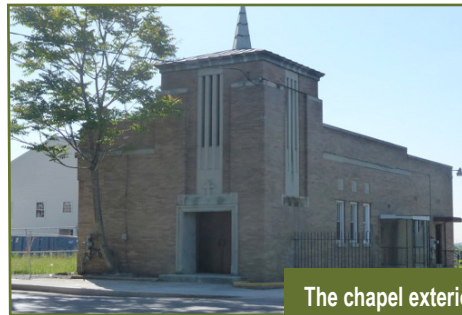
**FOOD DRIVE COLLECTION**

FHRC collects food items which are donated to a local food cupboard at the end of the day. Items to share: canned soup, peanut butter, tuna, beans, cereal and pasta.

Mailing Address:  
Friends of Historic Riverview Cemetery  
P.O. Box 2173  
Wilmington, Delaware 19899

www.riverviewcem.com

YOUR HELP IS NEEDED FOR A **CAPITAL IDEA**



**A WONDERFUL OPPORTUNITY**

The Trustees of Longwood Foundation offered a Challenge Match Grant to FHRC in the amount of \$50,000 to assist with the renovation of the building *after* we have raised \$50,000. This is a strong statement of support.

**WHAT THIS "MATCHING GRANT" MEANS**

When you donate "In Memory" or "In Honor" of a loved one, as a special gift, or to help keep historic Riverview alive, the amount you give will double. If you donate \$100, Riverview Cemetery will actually receive \$200 because The Longwood Foundation will **match your donation**. Magically, \$500 becomes \$1000; \$1000 turns into \$2000, etc. **And, your donation is tax deductible.**

**WHAT IS THE DEADLINE?**

Unfortunately, this matching grant money has a deadline. We are asking you to make your donation before the end of this year so that in 2016 we can finish the renovation and begin using the building. Please donate today and help us realize the vision of providing a respectful place for our loved ones and those who remember and miss them.

The chapel exterior *looks* presentable. But the interior tells a different story. Years of neglect have taken its toll. Your donation will put this building to good use.

**The chapel renovation will provide:**

- **A MULTI-PURPOSE SPACE** for meeting before or after burial, for special events and tour groups. At present there is no gathering space, running water or toilet facilities to provide comfort or shelter.
- **A SMALL OFFICE** to conduct cemetery business
- **SPACE FOR DOCUMENT STORAGE** related to cemetery history, operations, and maintenance.
- **BASEMENT LEVEL STORAGE** for supplies, tools, and materials for outdoor volunteer projects and burial preparations.

**ANGELS ARE AMONG US**

FHRC thanks Betty Kylen Anderson who understands the impact of the Challenge Match and recently made a \$500 donation "In Memory of her loved ones at Riverview".

*Angels continues page 2. . .*

The Friends of Historic Riverview Cemetery exists to support the restoration and preservation of Wilmington's most culturally diverse non-profit public cemetery.

Riverview Cemetery • 3300 North Market Street • Wilmington, Delaware • (302) 762-4705



## FROM *the* BOARD

### DAYLILY DELIGHT

Remember those hundreds of daylilies lovingly planted, mulched and watered by a host of volunteer gardeners? Here is the reward for a job well done. These perennial beauties will continue to propagate and fill

in providing a band of color along the fence for all to appreciate. Many thanks to the 14 volunteers who mulched along Washington Street in August. Welcome to our first Del-Tech volunteer, Bianca Santiago.



### Burials

The Board of Directors assisted with two burials in August and appreciates the good working relationship with Congo Funeral Home and Evan Smith Funeral Services.

### Cemetery Maintenance

We are grateful to the officers and offenders at the Plummer Community Correction Center and Webb Center for the nicely cut grass and trimmed markers.

### Storm Damage

Kerns/A Davey Tree Company came to the rescue again and removed a large damaged limb in Section M.



Lee Anderson  
President



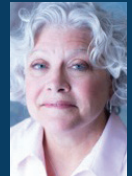
Tedd Cocker  
Vice President



Mary King  
Secretary



Kate Wilhere  
Treasurer



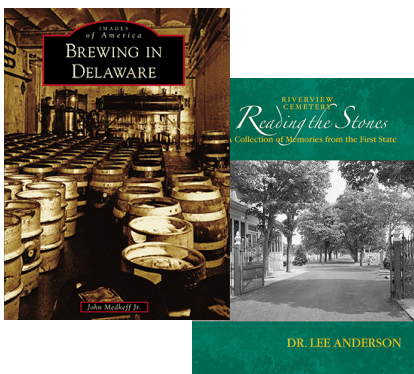
Debbie Dodd  
Member-at-Large

### Service Day September 18

FHRC Welcomes Wilmington Friends High School Students!

We have a lot of fun hosting school groups and their help really makes a visible difference. This year the project will be cleaning up both sides of a neglected fence-line along Eastlawn Avenue.

Wilmington  
**Friends 1748 School**



### BREWING IN DELAWARE EVENT

Buy your ticket and join historian and local author, John Medkeff, Jr. for a lecture and book signing (plus music, food and beer) on **Saturday September 5, 2015, 5 pm at the Blue Ball Barn**. Space is limited: For tickets and info visit [delaware-a-brew-story.eventbrite.com](http://delaware-a-brew-story.eventbrite.com). Lee Anderson, President, FHRC will participate and sign copies of her book *Riverview Cemetery Reading the Stones - A Collection of Memories from the First State*.

### ANGELS, CONTINUED FROM PAGE 1

A second large gift of \$500 was received from Roberta May in appreciation for research assistance provided by FHRC as she searched for a family member. Thanks also to Nancy Boulden who donated \$250 just because she "believes in our cause and wants to support FHRC".

To date approximately 100 people and organizations have donated and about 20 of our donors have given more than once.

Please consider donating today, either by mail or online at our website: [www.riverviewcem.com](http://www.riverviewcem.com). Any gift, small or large will help us to realize our vision.

### PROJECTS *of* NOTE

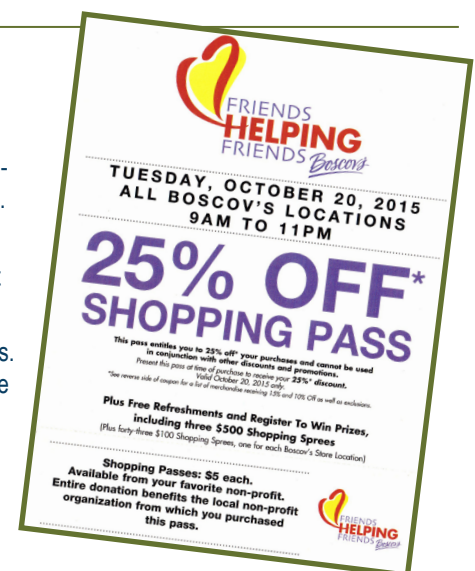
#### Boscov's Friends Helping Friends Day Tuesday, October 20, 2015

It is now time to buy your \$5 shopping pass and benefit from 25% discounts while shopping on Oct. 20th.

Riverview Cemetery receives the \$5 from the pass you buy (or sell) and purchasers of the pass get that 25% discount just in time for holiday shopping.

Challenge yourself and sell 10 passes to your friends. Debbie Dodd will have passes available for purchase at the monthly volunteer project on September 12th.

Complete details are in the August Newsletter at [www.riverviewcem.com/newsletters](http://www.riverviewcem.com/newsletters).



Visit our website: [www.riverviewcem.com](http://www.riverviewcem.com)