

**NOTICE**

**RIVERVIEW CEMETERY IS OPEN FOR BURIALS**

Volunteer projects are cancelled until further notice. We cannot share tools, gloves, restrooms, or snacks.

You may walk or drive through the cemetery and remove trash and sticks during grass cutting season.

Use this time to find your connections to Riverview and share them with us on Facebook:  
[www.facebook.com/FHRCW](http://www.facebook.com/FHRCW)

**FOOD DRIVE** will continue when volunteer projects resume.

FHRC collects food items which are donated to a local food cupboard at the end of the day. Items to share: canned soup, peanut butter, tuna, beans, cereal and pasta.

For Statewide Resources to assist with Loss and Grief visit the website of the Delaware Grief Awareness Consortium:  
[www.degac.org](http://www.degac.org)

Mailing Address:  
 Friends of Historic Riverview Cemetery  
 P.O. Box 2173  
 Wilmington, DE 19899  
[www.riverviewcem.com](http://www.riverviewcem.com)

**MAKING CONNECTIONS - A SMALL WORLD VETERAN STORY!**

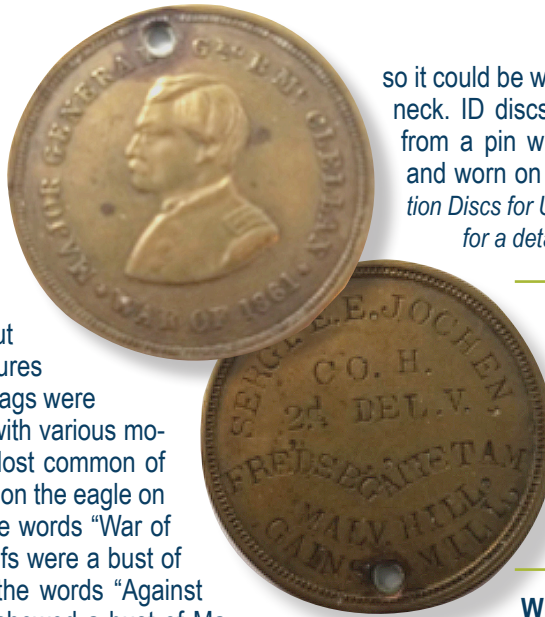
**EDWIN EDWARD JOCHEN CIVIL WAR ID DISC RECOVERED IN 2020**

Early this Spring, using Riverview Cemetery's website information, a gentleman from the West Coast contacted FHRC because he had acquired a number of coins from an eBay seller in 2019. Included in the coins was a Civil War ID Disc belonging to Sargent E. E. Jochen. He thought perhaps we might know how to get in touch with relatives because he discovered the Civil War Veteran was buried at Riverview Cemetery. It just so happened that he was the Great-Great Grandfather of Ed Jochen, a FHRC member/volunteer. We were very excited to connect east coast to west coast!

**WHAT ARE ID DISCS?**

**Civil War Dog Tags:**

These are also called ID discs. They were not issued by the government but were sold to soldiers by itinerant civilian merchants, or so-called **sur-tlers**, who followed the armies and set up shop out of their wagons, or in structures built near camps. The dog tags were usually made of gilt brass with various motifs on the obverse side. Most common of these was an eagle (based on the eagle on the \$10 gold piece) with the words "War of 1861". Among popular motifs were a bust of Lincoln and a shield with the words "Against Rebellion, 1861". Another showed a bust of Major General George B. McClellan. He was a popular figure with his men (in the Army of the Potomac) because he was seen as cautious – not unnecessarily risking the lives of his men. The reverse side had the soldier's name, rank, company and state regiment punched into the disc. It would almost always include the name of the soldier's hometown and state. Sometimes Battles were included if there was enough space. A hole was punched in the dog tag



so it could be worn with a string around the neck. ID discs might also be suspended from a pin with a ring through the hole and worn on the coat. (Google "Identification Discs for Union Soldiers in the Civil War" for a detailed guide to these ID Discs.)

Sergt. E.E. Jochen's dog tag features the McClellan motif on the obverse. On the reverse is punched: SERGT. E.E. JOCHEN CO.H 2d. DEL. V. FRESDB'G ANTI TAM MALV. HILL, GAINS MILL.

**WHO WAS SERGT. E.E. JOCHEN?**

Edwin Edward Jochen was born on July 18, 1838, in Germany. He emigrated to the U.S. from Liverpool aboard the ship "POMONA", and arrived in NYC on November 13, 1857. He married Mary Elizabeth Grimmel from Hessen Germany. They had seven children. Edwin died on January 1, 1892. Mary died on December 21, 1918. They are buried in Riverview Cemetery in Wilmington, Delaware.

The mission of Friends of Historic Riverview Cemetery is to operate and maintain Wilmington's most culturally diverse, non-profit, public cemetery, and to support its restoration and preservation.

Riverview Cemetery • 3300 North Market Street • Wilmington, Delaware • (302) 762-4705



## FROM *the* BOARD

### THANK YOU FOR YOUR SEPTEMBER-OCTOBER DONATIONS

(as of 10.26.20)

|  |                |
|--|----------------|
| <b>Tedd Cocker &amp; Joan Wheeler</b>  | <b>\$1,000</b> |
| <b>Genevieve Luchejko</b> - In memory of parents, brothers & sisters – Joseph & Anna, Stephen, Michael, Charles & Kathryn Tyrawski   | <b>\$600</b>   |
| <b>Floyd Weber</b>   | <b>\$500</b>   |
| <b>C. E. Jochen</b> – In honor and memory of my Great Great Grandfather Edwin E. Jochen and Great Grandparents Jesse & Margaret Jochen   | <b>\$300</b>   |
| <b>William A. Weaver</b> – In memory of Batholomew & Anna Allen  | <b>\$300</b>   |
| <b>Clyde &amp; Sarah Hess</b>  | <b>\$400</b>   |
| <b>Janet &amp; Watson Day</b> - In memory of C. Thorpe Martin III & Adelaide L. Martin, Charles Thorpe Martin & Bertha S. Martin, Rachel Densten, Aunt Ella Martin, & Great Grandmother Martin | <b>\$150</b>   |
| <b>Margaret Gerber</b> – In memory of Compton & Downs families   | <b>\$150</b>   |
| <b>Denise Baldwin</b> - In memory of her mother, Teresa Ann Strickland   | <b>\$100</b>   |
| <b>Trudy Gilgenast</b> – In memory of the Herolds & Holzhausers  | <b>\$100</b>   |
| <b>Anonymous</b>   | <b>\$100</b>   |
| <b>Wayne &amp; Joyce White</b>   | <b>\$50</b>    |
| <b>Mary Lee Merrill</b> – In memory of Suzanne S. Scott  | <b>\$30</b>    |
| <b>Roger A. Brown</b> - In Memory of Thomas & Lucy Stayton   | <b>\$25</b>    |
| <b>Mary T. Farrell</b> - In Memory of Family   | <b>\$100</b>   |
| <b>Richard &amp; Mary Browne</b> - Tree Work   | <b>\$600</b>   |
| <b>Havemeyers</b> - Membership   | <b>\$300</b>   |

**MEMBERSHIP:** Friends of Historic Riverview Cemetery is a 501c/3 non-profit charitable organization. Your membership is tax-deductible and the funds are used for cemetery expenses. Please join or renew your annual membership now. And find out if your employer will match your donation!

**Membership Levels:**

- \$30 Individual • \$50 Family
- \$125 Restorer • \$300 Preserver
- \$500 Guardian

**ESTATE PLANNING:** Consider Riverview Cemetery in your Will. Gifts of stock, retirement plan assets, life insurance and real estate are all welcome. Contact us for assistance.

**BURIALS LEE: NEED UPDATED NO.**

The Board of Directors assisted with 2 burials in July and August.

**CREMATION**

Families who choose cremation at the time of death may select a cemetery at a later time. We are available to assist you with the placement of your loved one's cremains at Riverview Cemetery. Four family-related cremains may be placed in a single gravesite (a new grave or a grave belonging to your relative). Call 302-762-4705 to discuss this affordable option.



Lee Anderson  
President



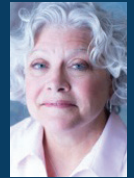
Tedd Cocker  
Honorary



Mary King  
Secretary



Kate Wilhere  
Treasurer



Debbie Dodd  
Member-at-Large

### Veteran count 1158

To view a complete list and Find A Grave page, please visit

[www.riverviewcem.com](http://www.riverviewcem.com)

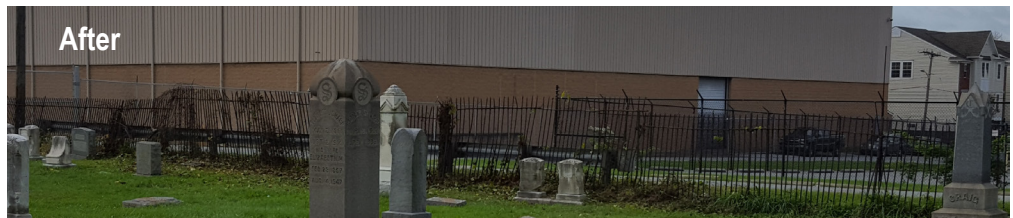
## PROJECTS *of* NOTE



**GROUNDHOGS ARE PROBLEMATIC IN A CEMETERY!** We appreciate the good service of **Vance Wildlife Service** who captured 8 groundhogs this fall. In addition to filling holes with dirt throughout the cemetery, damage done by groundhogs and foxes who look for warm hibernation spots around the large steps in front of the Community Mausoleum was addressed. Thanks to a team lead by Julie Zorach, her Dad, Ransom Jenks, and supported by Mary King and Ken Valan, a plan was devised to excavate deeply around steps, build forms, fill with concrete and backfill to prevent further digging.



Before



After

### THE POWER OF VOLUNTEER ENERGY!

- In October, FHRC welcomed volunteers needing community service hours. Our first project was to remove trash inside and outside the cemetery. Riverview's 42 acres is surrounded by 8 roads and a lot of pedestrian traffic.
- Our second project was clearing the Todd's Lane fence lines of vines, removing trash along Market St. and East-lawn Ave., and weeding the Section J circular baby garden. Little things matter; it takes many hands to succeed.

**Davey Tree Company** has begun removal of storm-damaged trees. Thank you!

**Chandler Funeral Homes & Crematory** continues to donate flags for our flag poles. Many are damaged by storms and high winds. Thank you!

### Make a Connection! new feature coming soon

Tell us about your connection(s) to Riverview Cemetery. Subsequent newsletters will have a column to include your information.

Let's continue the Oral History project that resulted in the publication of *Riverview Cemetery: Reading the Stones - A Collection of Memories from the First State*.

Connect with us on

Facebook: [www.facebook.com/FHRCW](http://www.facebook.com/FHRCW)

Email: [riverviewfriends@gmail.com](mailto:riverviewfriends@gmail.com)

Phone: 302 762 4705



Visit our website: [www.riverviewcem.com](http://www.riverviewcem.com)