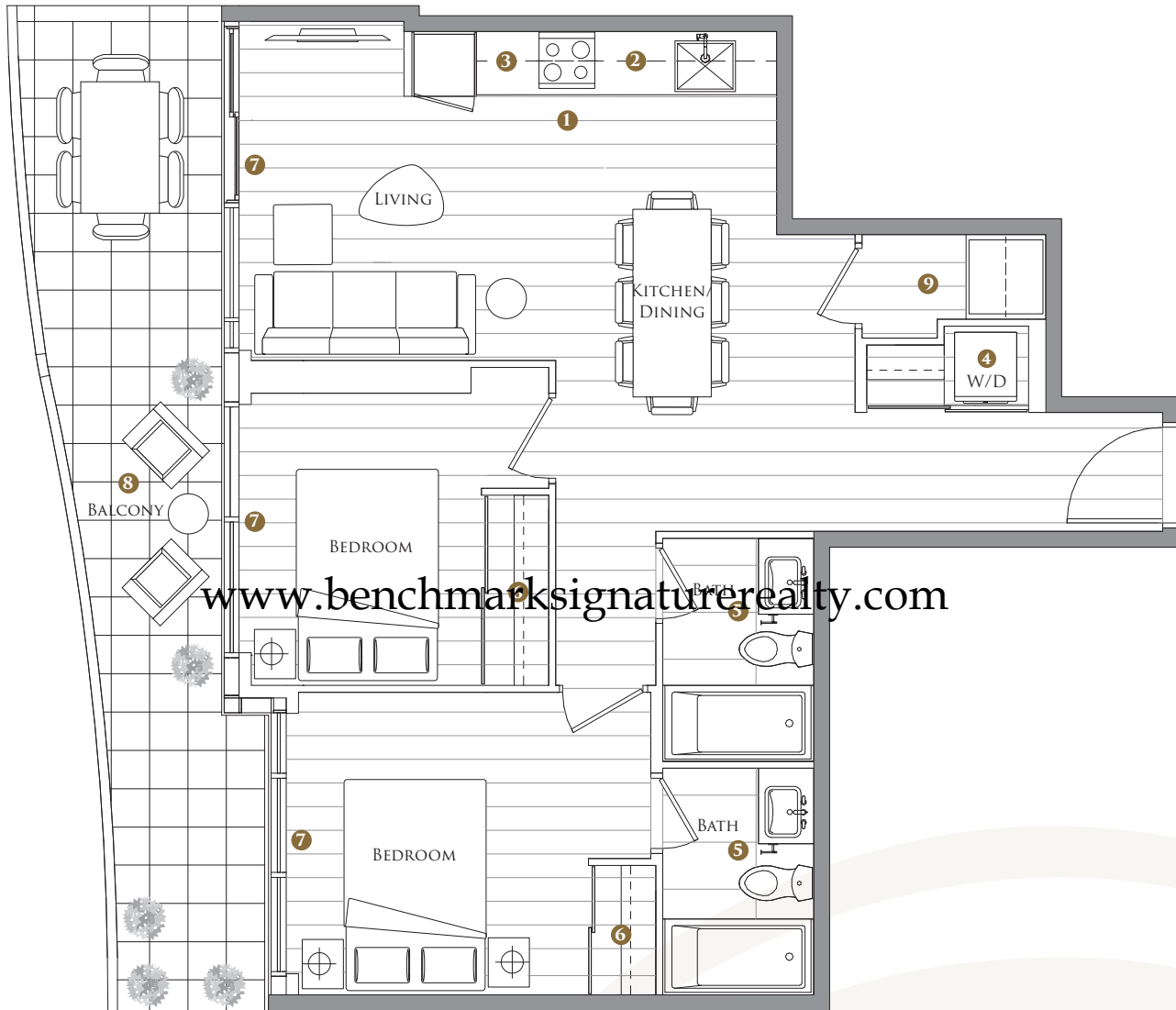
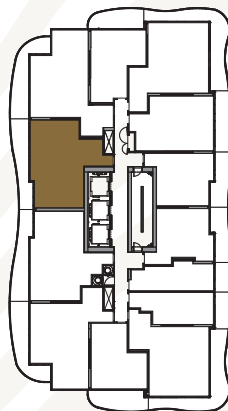


KING'S LANDING NORTH TOWER



SUITE 01 TWO BEDROOMS

| | |
|---------------------------|----------------------------|
| TOTAL AREA | 982 SQ.FT. |
| 800 SQ.FT. INDOOR AREA | 182 SQ.FT. OUTDOOR AREA |

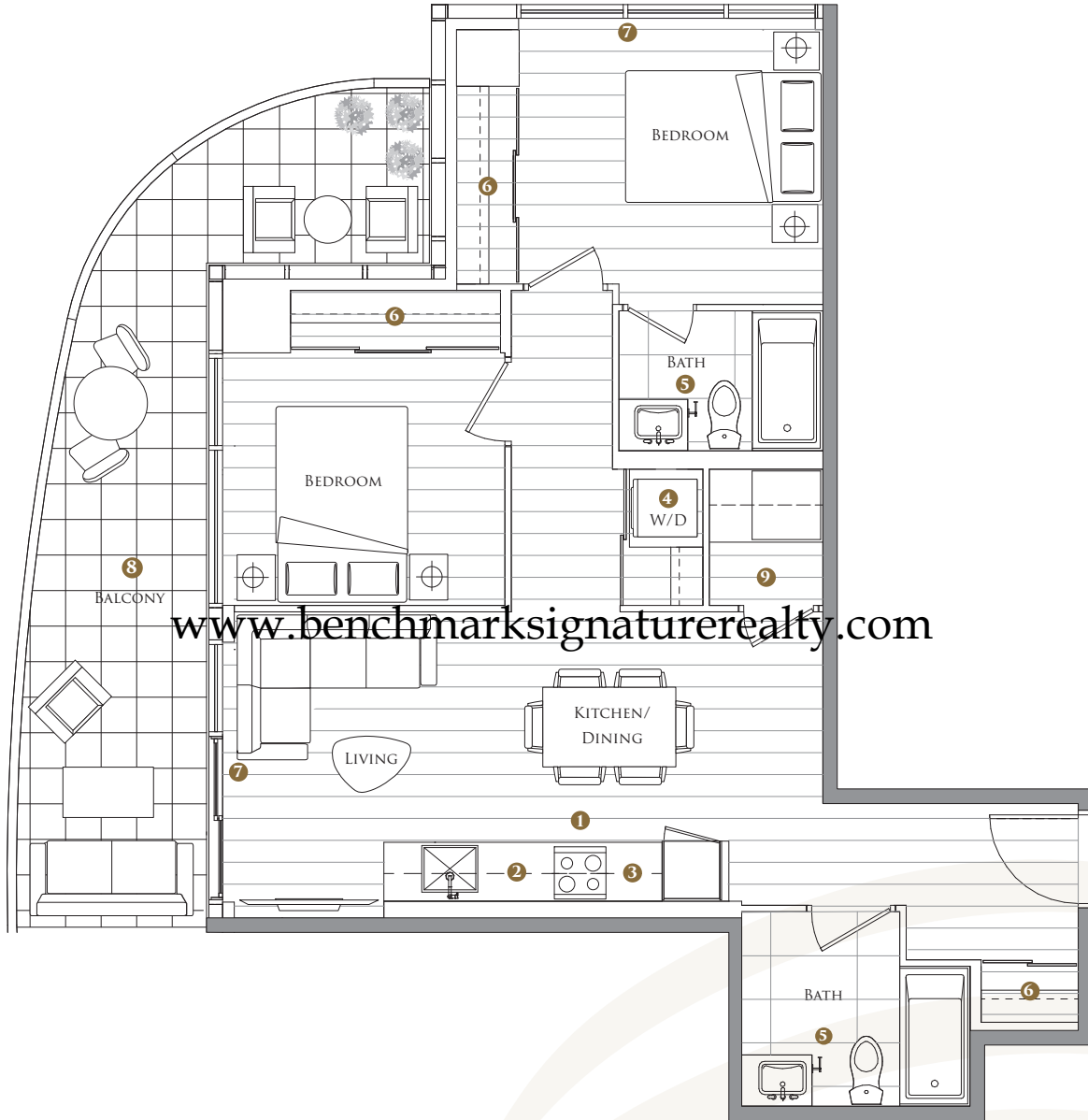


FEATURE HIGHLIGHTS

- 1 MIELE APPLIANCES
- 2 KITCHEN STORAGE ORGANIZER
- 3 BLUM KITCHEN HARDWARE
- 4 MIELE WASHER/DRYER
- 5 KOHLER/GROHE BATHROOM PLUMBING FIXTURES
- 6 CLOSET ORGANIZER SYSTEM
- 7 ROLLER - SHADES
- 8 COMPOSITE WOOD DECKING
- 9 WINE CELLAR

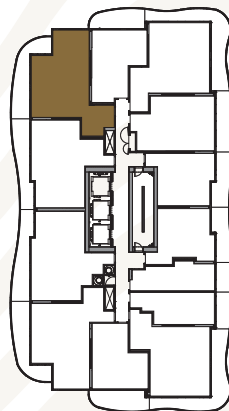
The developer reserves the right to make minor revisions to interior wall locations and exterior window system. All materials and drawings are approximate. Information is subject to change without notice. Actual square footage may vary from the stated floorplan. Furniture and upgrades shown on plans are for illustration purposes only and are not included. E.&O.E.

KING'S LANDING NORTH TOWER



SUITE 02 TWO BEDROOMS

| TOTAL AREA | 1008 SQ.FT. |
|---------------------------|----------------------------|
| 808 SQ.FT. INDOOR AREA | 200 SQ.FT. OUTDOOR AREA |

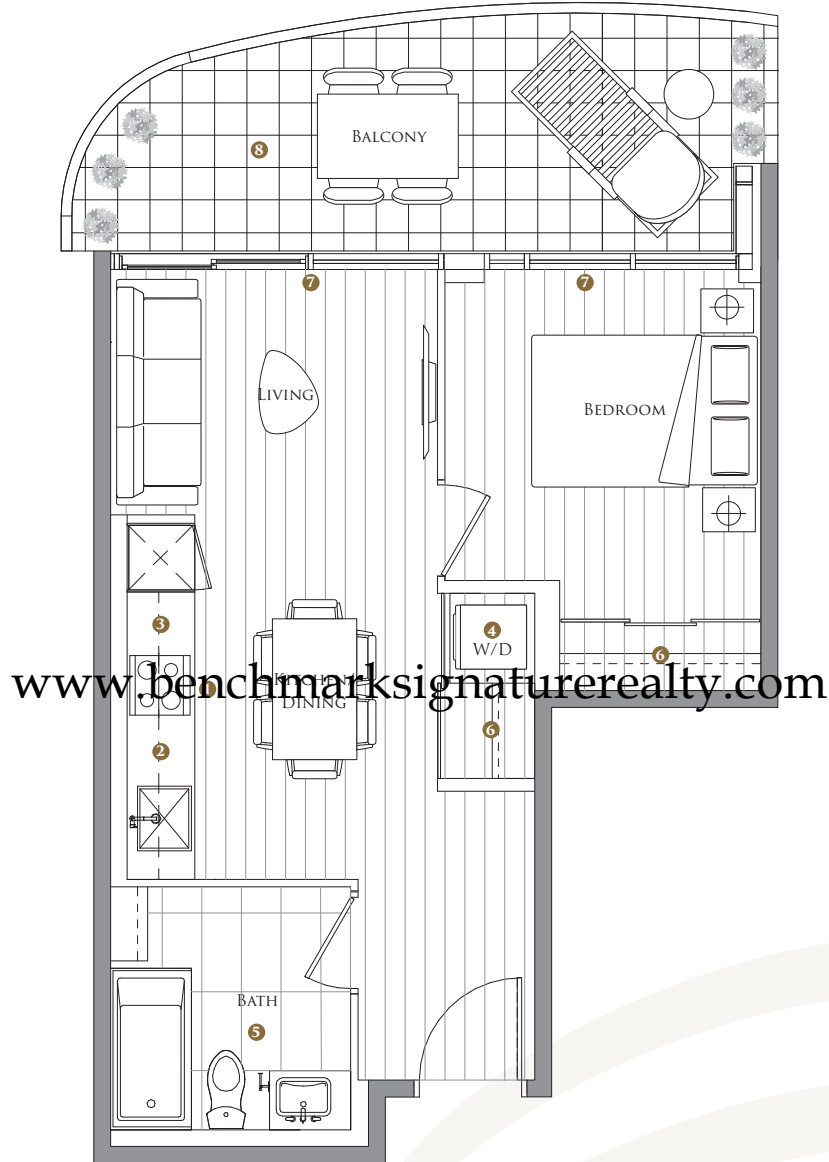


FEATURE HIGHLIGHTS

- 1 MIELE APPLIANCES
- 2 KITCHEN STORAGE ORGANIZER
- 3 BLUM KITCHEN HARDWARE
- 4 MIELE WASHER/DRYER
- 5 KOHLER/GROHE BATHROOM PLUMBING FIXTURES
- 6 CLOSET ORGANIZER SYSTEM
- 7 ROLLER - SHADES
- 8 COMPOSITE WOOD DECKING
- 9 WINE CELLAR

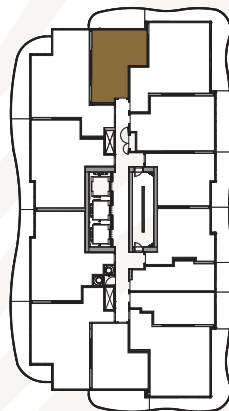
The developer reserves the right to make minor revisions to interior wall locations and exterior window system. All materials and drawings are approximate. Information is subject to change without notice. Actual square footage may vary from the stated floorplan. Furniture and upgrades shown on plans are for illustration purposes only and are not included. E.&O.E.

KING'S LANDING NORTH TOWER



SUITE 03 ONE BEDROOM

| TOTAL AREA 625 SQ.FT. | |
|---------------------------|----------------------------|
| 490 SQ.FT. INDOOR AREA | 135 SQ.FT. OUTDOOR AREA |

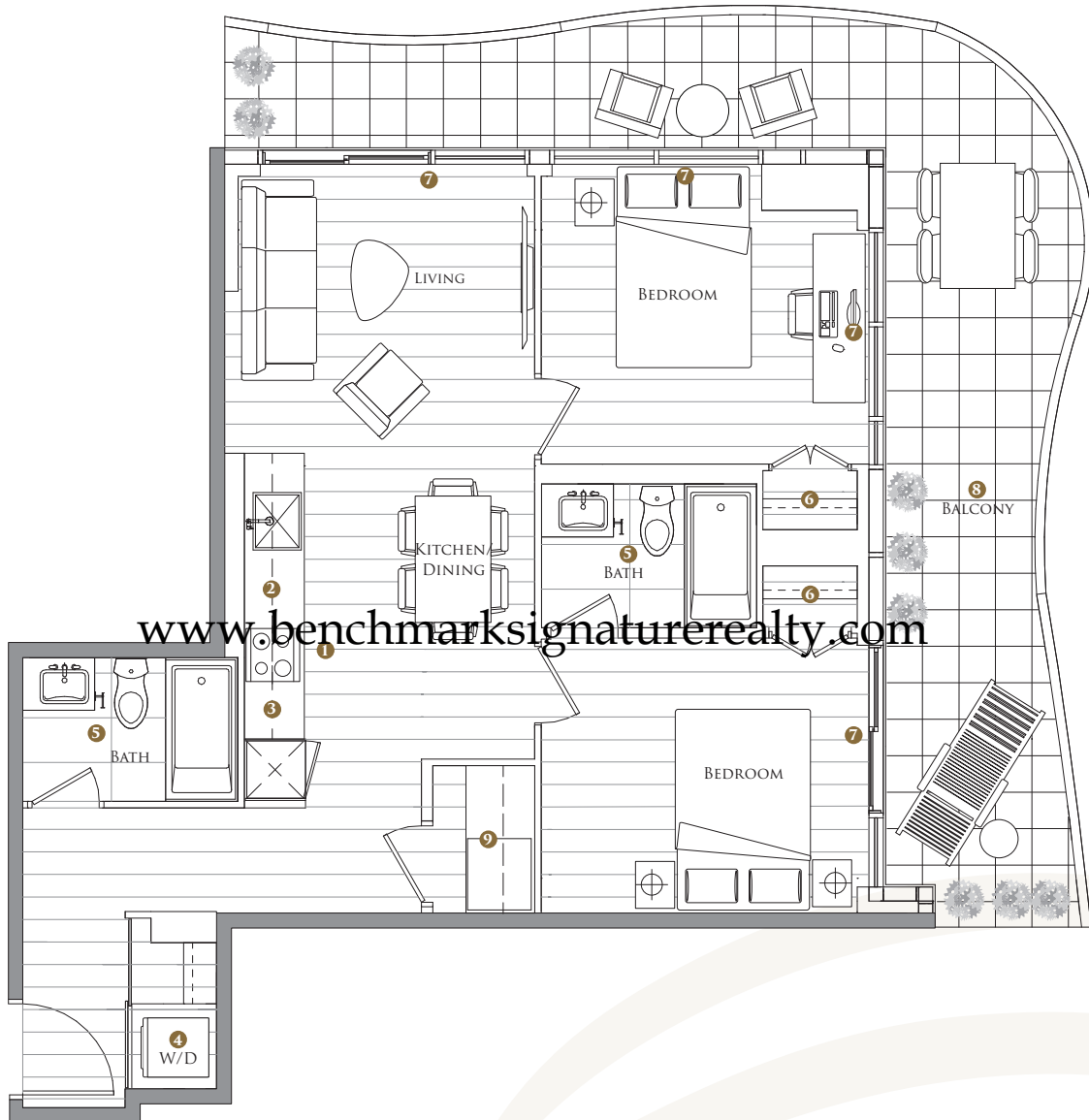


FEATURE HIGHLIGHTS

- 1 MIELE APPLIANCES
- 2 KITCHEN STORAGE ORGANIZER
- 3 BLUM KITCHEN HARDWARE
- 4 MIELE WASHER/DRYER
- 5 KOHLER/GROHE BATHROOM PLUMBING FIXTURES
- 6 CLOSET ORGANIZER SYSTEM
- 7 ROLLER - SHADES
- 8 COMPOSITE WOOD DECKING

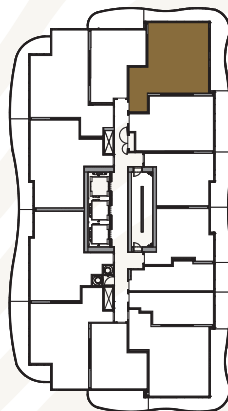
The developer reserves the right to make minor revisions to interior wall locations and exterior window system. All materials and drawings are approximate. Information is subject to change without notice. Actual square footage may vary from the stated floorplan. Furniture and upgrades shown on plans are for illustration purposes only and are not included. E.&O.E.

KING'S LANDING NORTH TOWER



SUITE 05 TWO BEDROOMS

| TOTAL AREA | 1030 SQ.FT. |
|---------------------------|----------------------------|
| 760 SQ.FT. INDOOR AREA | 270 SQ.FT. OUTDOOR AREA |



FEATURE HIGHLIGHTS

- 1 MIELE APPLIANCES
- 2 KITCHEN STORAGE ORGANIZER
- 3 BLUM KITCHEN HARDWARE
- 4 MIELE WASHER/DRYER
- 5 KOHLER/GROHE BATHROOM PLUMBING FIXTURES
- 6 CLOSET ORGANIZER SYSTEM
- 7 ROLLER - SHADES
- 8 COMPOSITE WOOD DECKING
- 9 WINE CELLAR

The developer reserves the right to make minor revisions to interior wall locations and exterior window system. All materials and drawings are approximate. Information is subject to change without notice. Actual square footage may vary from the stated floorplan. Furniture and upgrades shown on plans are for illustration purposes only and are not included. E.&O.E.



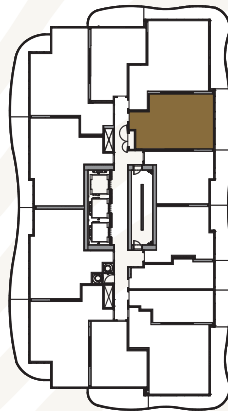
KING'S LANDING NORTH TOWER



SUITE 06

ONE BEDROOM + DEN

| TOTAL AREA 745 SQ.FT. | |
|---------------------------|----------------------------|
| 618 SQ.FT. INDOOR AREA | 127 SQ.FT. OUTDOOR AREA |



FEATURE HIGHLIGHTS

- 1 MIELE APPLIANCES
- 2 KITCHEN STORAGE ORGANIZER
- 3 BLUM KITCHEN HARDWARE
- 4 MIELE WASHER/DRYER
- 5 KOHLER/GROHE BATHROOM PLUMBING FIXTURES
- 6 CLOSET ORGANIZER SYSTEM
- 7 ROLLER - SHADES
- 8 COMPOSITE WOOD DECKING

The developer reserves the right to make minor revisions to interior wall locations and exterior window system. All materials and drawings are approximate. Information is subject to change without notice. Actual square footage may vary from the stated floorplan. Furniture and upgrades shown on plans are for illustration purposes only and are not included. E.&O.E.

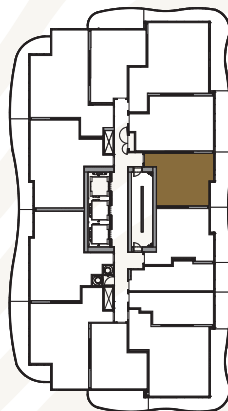


KING'S LANDING NORTH TOWER



SUITE 07 ONE BEDROOM

| TOTAL AREA 600 SQ.FT. | |
|---------------------------|----------------------------|
| 478 SQ.FT. INDOOR AREA | 122 SQ.FT. OUTDOOR AREA |



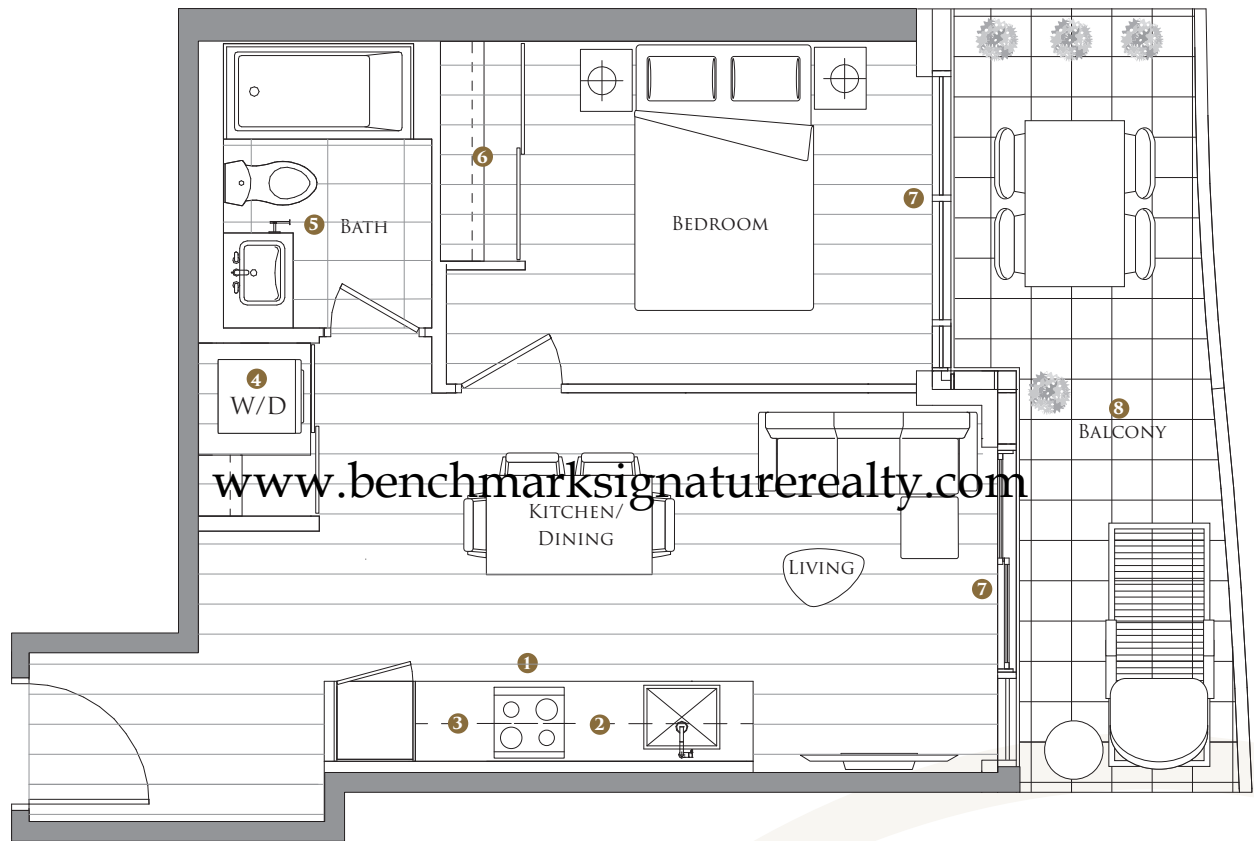
FEATURE HIGHLIGHTS

- 1 MIELE APPLIANCES
- 2 KITCHEN STORAGE ORGANIZER
- 3 BLUM KITCHEN HARDWARE
- 4 MIELE WASHER/DRYER
- 5 KOHLER/GROHE BATHROOM PLUMBING FIXTURES
- 6 CLOSET ORGANIZER SYSTEM
- 7 ROLLER - SHADES
- 8 COMPOSITE WOOD DECKING

The developer reserves the right to make minor revisions to interior wall locations and exterior window system. All materials and drawings are approximate. Information is subject to change without notice. Actual square footage may vary from the stated floorplan. Furniture and upgrades shown on plans are for illustration purposes only and are not included. E.&O.E.

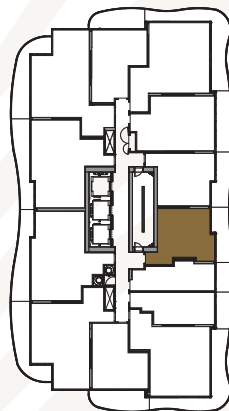


KING'S LANDING NORTH TOWER



SUITE 08 ONE BEDROOM

| TOTAL AREA 605 SQ.FT. | |
|---------------------------|----------------------------|
| 485 SQ.FT. INDOOR AREA | 120 SQ.FT. OUTDOOR AREA |



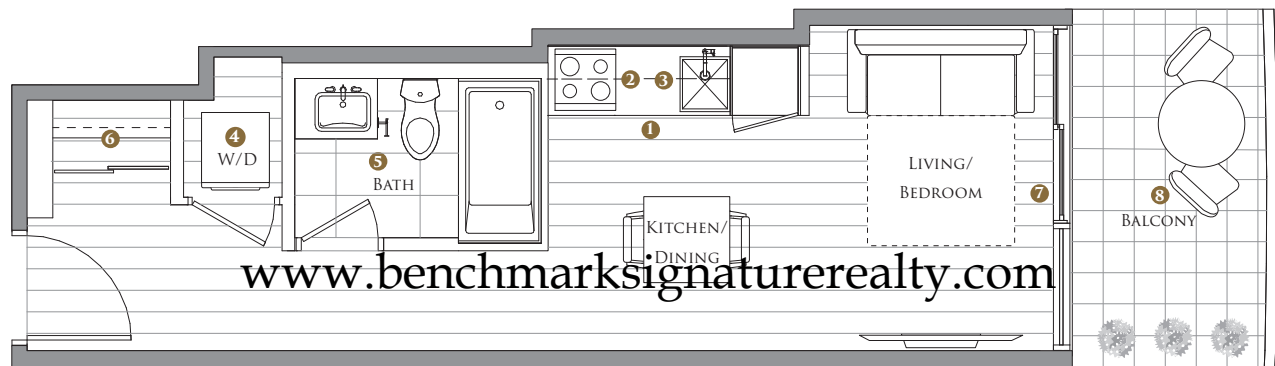
FEATURE HIGHLIGHTS

- 1 MIELE APPLIANCES
- 2 KITCHEN STORAGE ORGANIZER
- 3 BLUM KITCHEN HARDWARE
- 4 MIELE WASHER/DRYER
- 5 KOHLER/GROHE BATHROOM PLUMBING FIXTURES
- 6 CLOSET ORGANIZER SYSTEM
- 7 ROLLER - SHADES
- 8 COMPOSITE WOOD DECKING

The developer reserves the right to make minor revisions to interior wall locations and exterior window system. All materials and drawings are approximate. Information is subject to change without notice. Actual square footage may vary from the stated floorplan. Furniture and upgrades shown on plans are for illustration purposes only and are not included. E.&O.E.

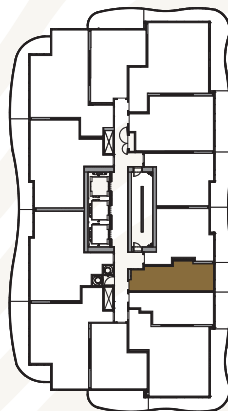


KING'S LANDING NORTH TOWER



SUITE 09 JUNIOR ONE BEDROOM

| TOTAL AREA 388 SQ.FT. | |
|---------------------------|---------------------------|
| 325 SQ.FT. INDOOR AREA | 63 SQ.FT. OUTDOOR AREA |



FEATURE HIGHLIGHTS

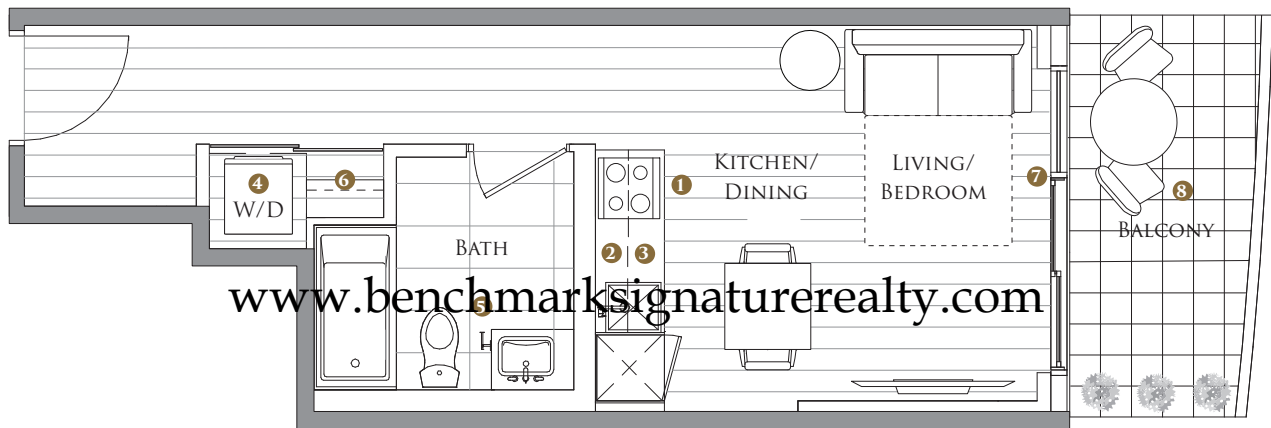
- 1 MIELE APPLIANCES
- 2 KITCHEN STORAGE ORGANIZER
- 3 BLUM KITCHEN HARDWARE
- 4 MIELE WASHER/DRYER
- 5 KOHLER/GROHE BATHROOM PLUMBING FIXTURES
- 6 CLOSET ORGANIZER SYSTEM
- 7 ROLLER - SHADES
- 8 COMPOSITE WOOD DECKING

The developer reserves the right to make minor revisions to interior wall locations and exterior window system. All materials and drawings are approximate. Information is subject to change without notice. Actual square footage may vary from the stated floorplan. Furniture and upgrades shown on plans are for illustration purposes only and are not included. E.&O.E.



KING'S LANDING

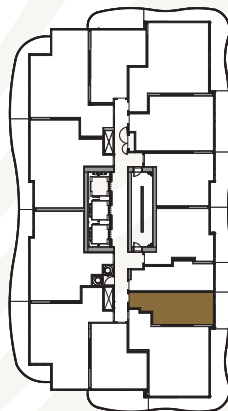
NORTH TOWER



SUITE 10

JUNIOR ONE BEDROOM

| TOTAL AREA 425 SQ.FT. | |
|---------------------------|---------------------------|
| 351 SQ.FT. INDOOR AREA | 74 SQ.FT. OUTDOOR AREA |

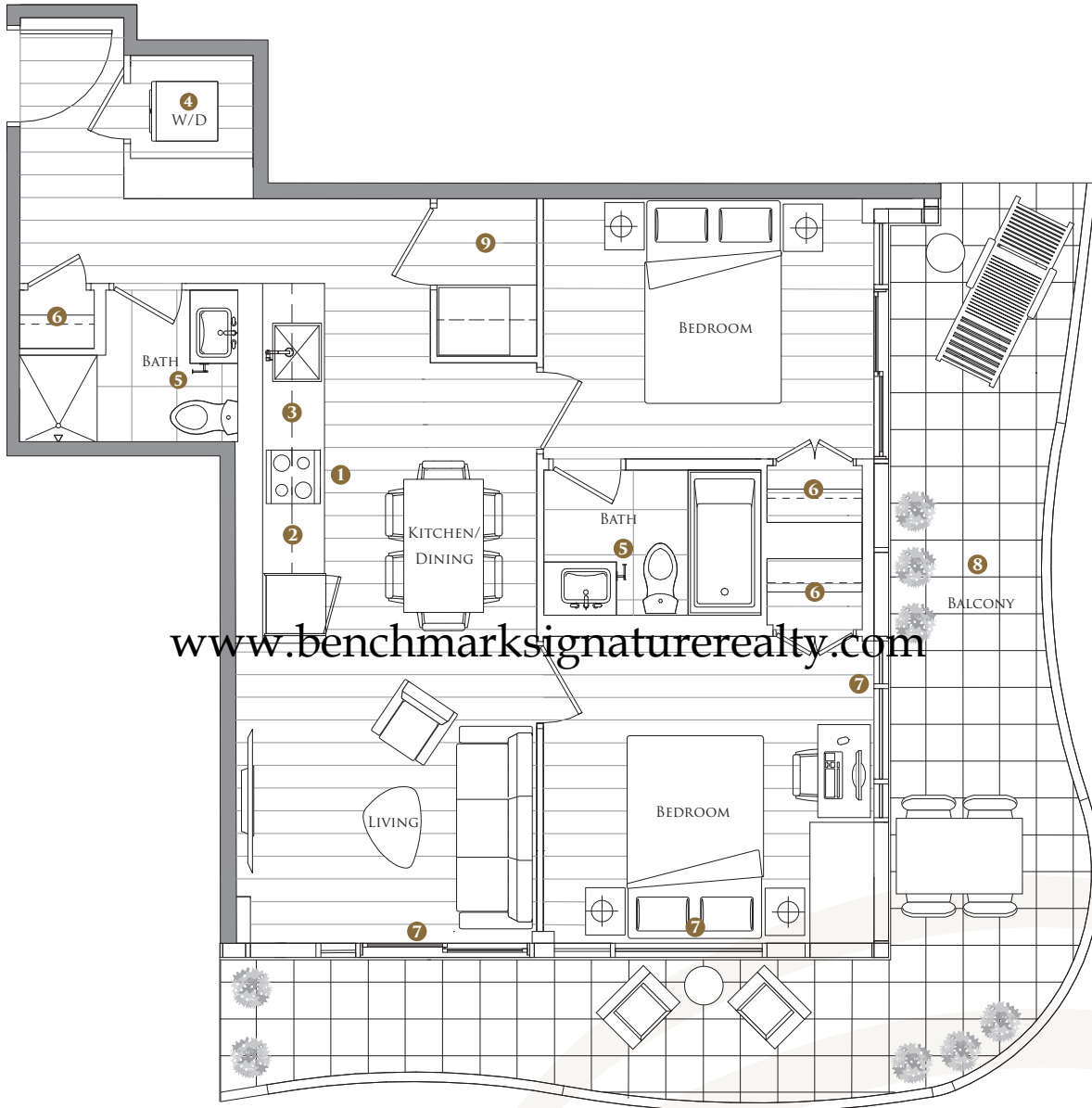


FEATURE HIGHLIGHTS

- 1 MIELE APPLIANCES
- 2 KITCHEN STORAGE ORGANIZER
- 3 BLUM KITCHEN HARDWARE
- 4 MIELE WASHER/DRYER
- 5 KOHLER/GROHE BATHROOM PLUMBING FIXTURES
- 6 CLOSET ORGANIZER SYSTEM
- 7 ROLLER - SHADES
- 8 COMPOSITE WOOD DECKING

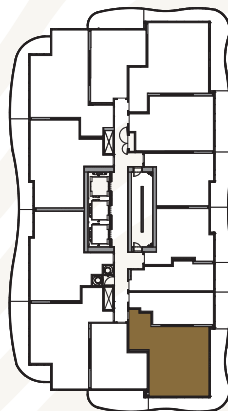
The developer reserves the right to make minor revisions to interior wall locations and exterior window system. All materials and drawings are approximate. Information is subject to change without notice. Actual square footage may vary from the stated floorplan. Furniture and upgrades shown on plans are for illustration purposes only and are not included. E.&O.E.

KING'S LANDING NORTH TOWER



SUITE 11 TWO BEDROOMS

| TOTAL AREA | 1010 SQ.FT. |
|---------------------------|----------------------------|
| 738 SQ.FT. INDOOR AREA | 272 SQ.FT. OUTDOOR AREA |

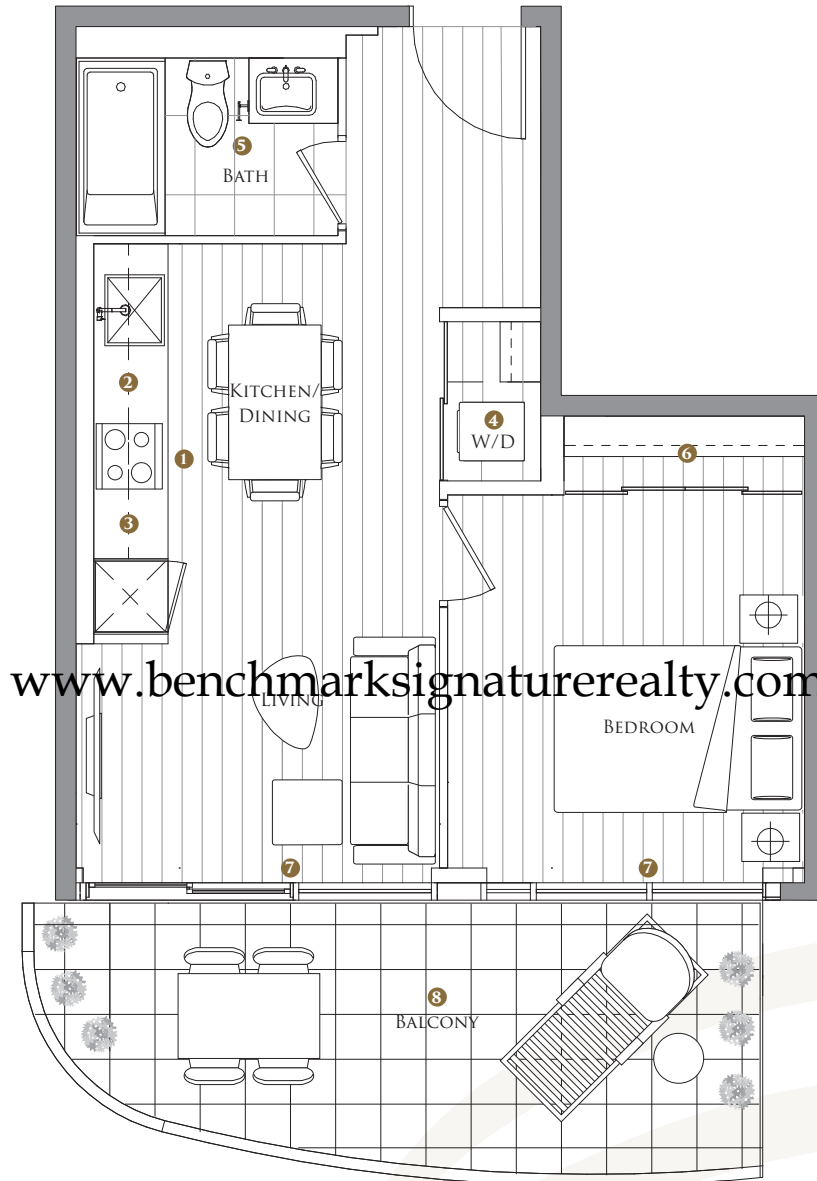


FEATURE HIGHLIGHTS

- 1 MIELE APPLIANCES
- 2 KITCHEN STORAGE ORGANIZER
- 3 BLUM KITCHEN HARDWARE
- 4 MIELE WASHER/DRYER
- 5 KOHLER/GROHE BATHROOM PLUMBING FIXTURES
- 6 CLOSET ORGANIZER SYSTEM
- 7 ROLLER - SHADES
- 8 COMPOSITE WOOD DECKING
- 9 WINE CELLAR

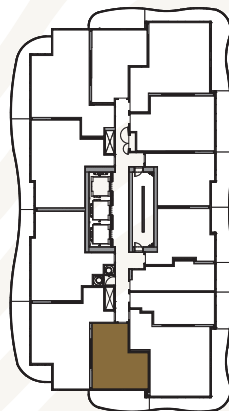
The developer reserves the right to make minor revisions to interior wall locations and exterior window system. All materials and drawings are approximate. Information is subject to change without notice. Actual square footage may vary from the stated floorplan. Furniture and upgrades shown on plans are for illustration purposes only and are not included. E.&O.E.

KING'S LANDING NORTH TOWER



SUITE 12 ONE BEDROOM

| TOTAL AREA 608 SQ.FT. | |
|---------------------------|----------------------------|
| 460 SQ.FT. INDOOR AREA | 148 SQ.FT. OUTDOOR AREA |

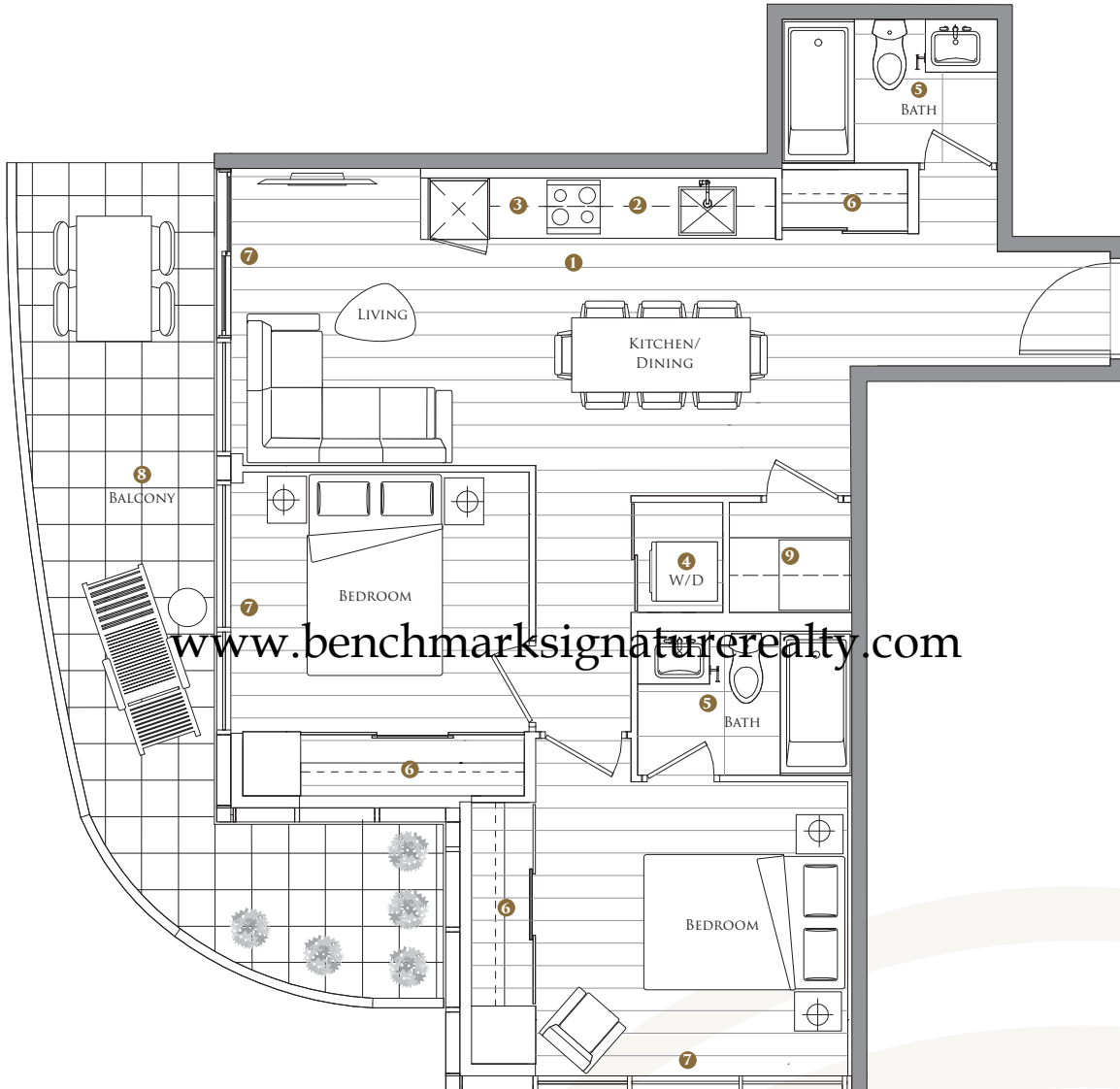


FEATURE HIGHLIGHTS

- 1 MIELE APPLIANCES
- 2 KITCHEN STORAGE ORGANIZER
- 3 BLUM KITCHEN HARDWARE
- 4 MIELE WASHER/DRYER
- 5 KOHLER/GROHE BATHROOM PLUMBING FIXTURES
- 6 CLOSET ORGANIZER SYSTEM
- 7 ROLLER - SHADES
- 8 COMPOSITE WOOD DECKING

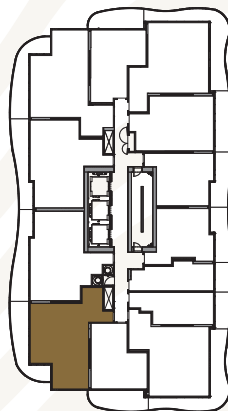
The developer reserves the right to make minor revisions to interior wall locations and exterior window system. All materials and drawings are approximate. Information is subject to change without notice. Actual square footage may vary from the stated floorplan. Furniture and upgrades shown on plans are for illustration purposes only and are not included. E.&O.E.

KING'S LANDING NORTH TOWER



SUITE 15 TWO BEDROOMS

| TOTAL AREA 978 SQ.FT. | |
|---------------------------|----------------------------|
| 780 SQ.FT. INDOOR AREA | 198 SQ.FT. OUTDOOR AREA |



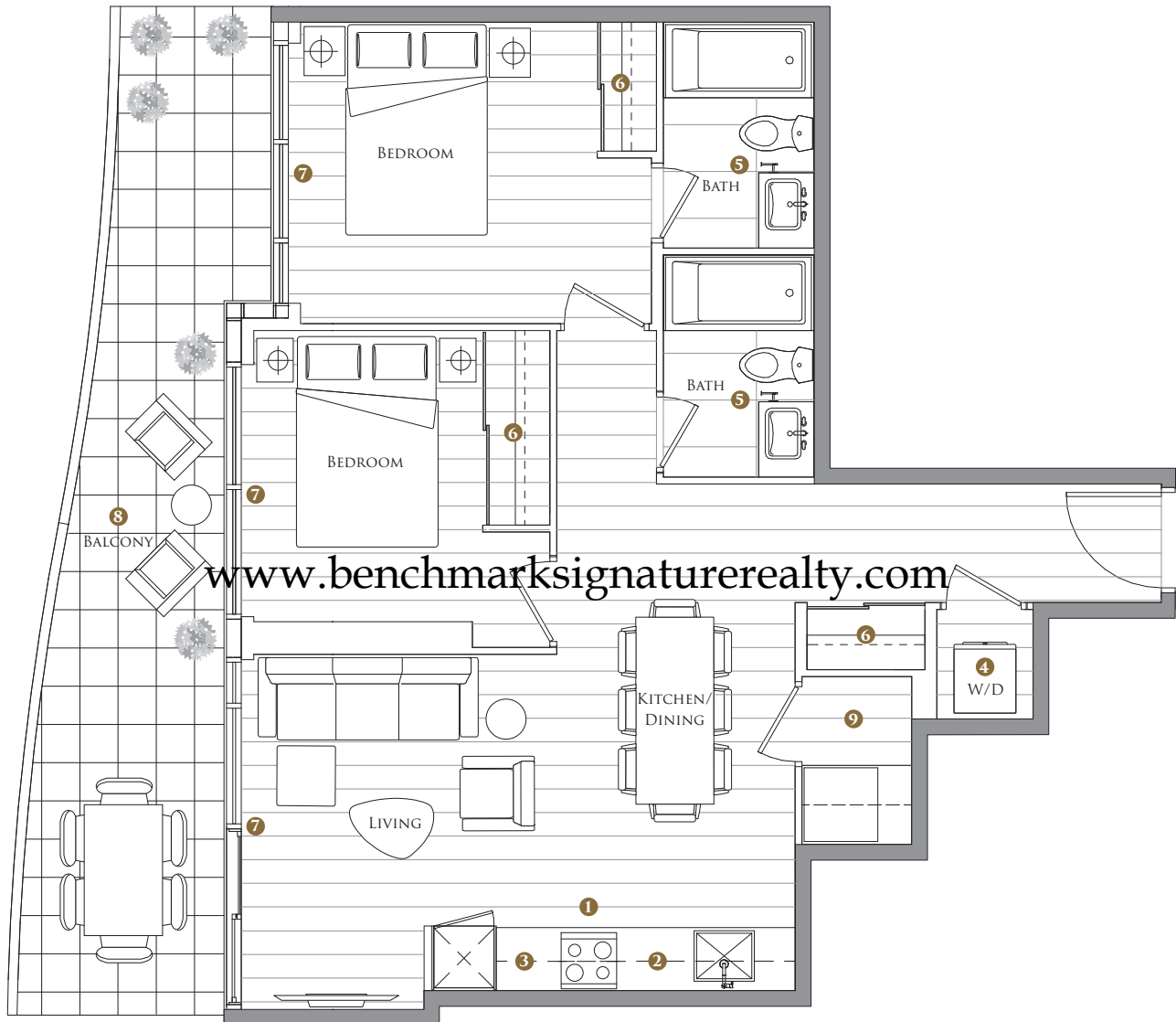
FEATURE HIGHLIGHTS

- 1 MIELE APPLIANCES
- 2 KITCHEN STORAGE ORGANIZER
- 3 BLUM KITCHEN HARDWARE
- 4 MIELE WASHER/DRYER
- 5 KOHLER/GROHE BATHROOM PLUMBING FIXTURES
- 6 CLOSET ORGANIZER SYSTEM
- 7 ROLLER - SHADES
- 8 COMPOSITE WOOD DECKING
- 9 WINE CELLAR

The developer reserves the right to make minor revisions to interior wall locations and exterior window system. All materials and drawings are approximate. Information is subject to change without notice. Actual square footage may vary from the stated floorplan. Furniture and upgrades shown on plans are for illustration purposes only and are not included. E.&O.E.

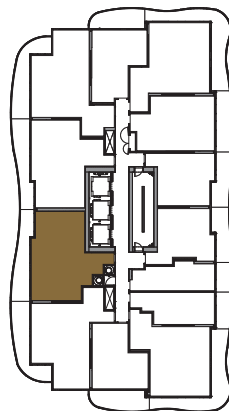


KING'S LANDING NORTH TOWER



SUITE 16 TWO BEDROOMS

| TOTAL AREA 996 SQ.FT. | |
|---------------------------|----------------------------|
| 808 SQ.FT. INDOOR AREA | 188 SQ.FT. OUTDOOR AREA |



FEATURE HIGHLIGHTS

- 1 MIELE APPLIANCES
- 2 KITCHEN STORAGE ORGANIZER
- 3 BLUM KITCHEN HARDWARE
- 4 MIELE WASHER/DRYER
- 5 KOHLER/GROHE BATHROOM PLUMBING FIXTURES
- 6 CLOSET ORGANIZER SYSTEM
- 7 ROLLER - SHADES
- 8 COMPOSITE WOOD DECKING
- 9 WINE CELLAR

The developer reserves the right to make minor revisions to interior wall locations and exterior window system. All materials and drawings are approximate. Information is subject to change without notice. Actual square footage may vary from the stated floorplan. Furniture and upgrades shown on plans are for illustration purposes only and are not included. E.&O.E.