

Miss California HeartShine

STATE
PAGEANT

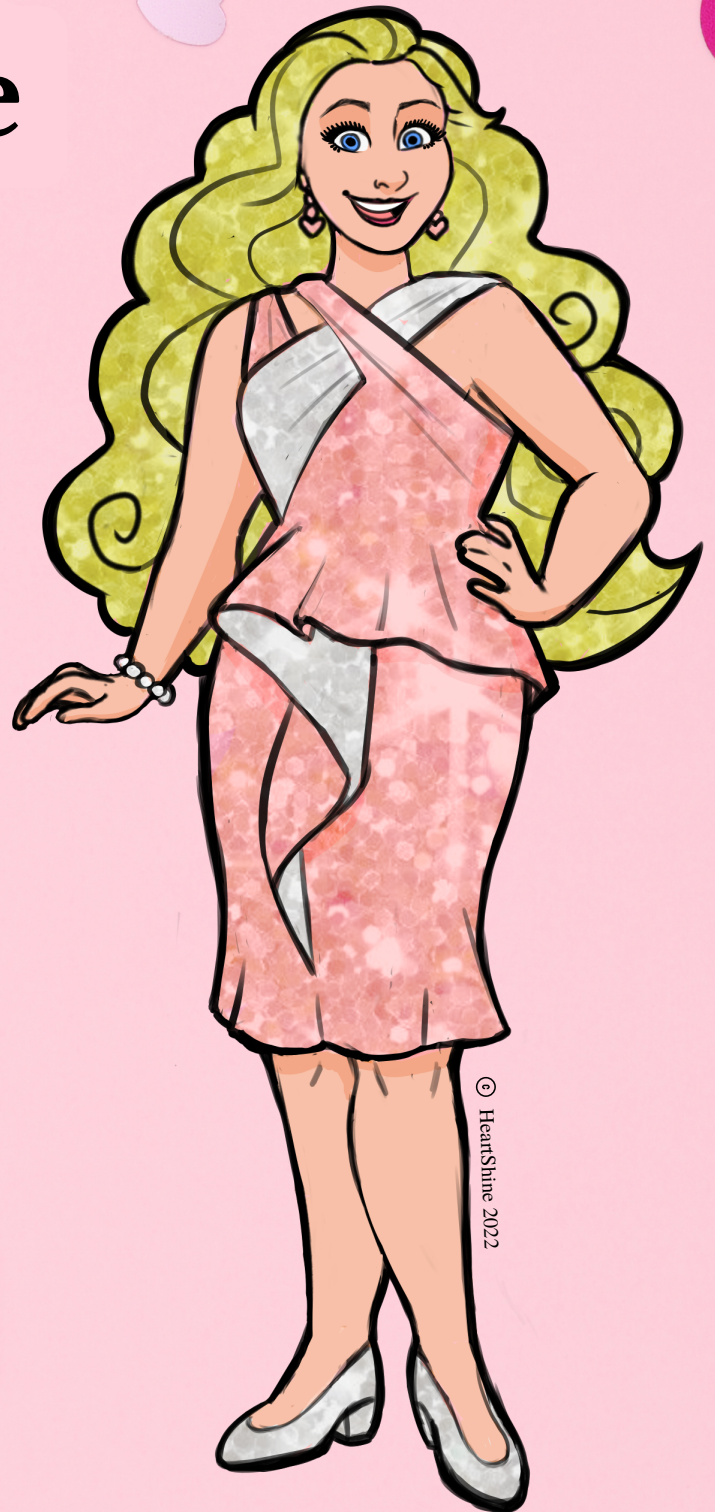
Sacramento,
CA

February 18-20th

Contestant Packet



Final Packet!



© HeartShine 2022

Updated Pageant Schedule

Subject to Change

Friday

- 3:00 - 5:00pm - **Early Registration** (at Hilton Hotel Lobby)
 - *Early Registration is not required come any time in that window*
- 6:00pm - **Sisterhood Dinner** (in private dining area at Hilton Hotel)
 - *dress code is semi-formal, dresses encouraged*
 - *Tickets still available! \$50 includes workshop, dinner, and entry into our Disneyland Ticket Door-Prize*

Saturday

- 10:00 - 11:30pm - **Pageant Registration** (at Hilton Hotel "Brandywine" Room)
 - *Required for all those that didn't come to Early Registration on Friday*
- 11:30 - 11:45pm - **Welcome Session**
 - *Taking place immediately after the last contestant registers*
- 1:00 - 3:00pm - **Interviews** (at Hilton private room)
 - *Sweetheart, Pre-Teen, Jr. Teen, and Teen will wear pink HeartShine t-shirt and black bottoms, all others will wear Business Professional attire*
- 5:30 - 8:15pm - **Think Pink Pajama Party & Contestant Gift Exchange** (at Folsom room at Hilton Hotel)
 - *You don't want to be late for this year's party!*

Sunday

- 8:30 - 9:00am - **Yoga Mindfulness Session** (in Grand Ballroom at Hilton Hotel)
- 9:00- 11:00am - **Rehearsal** (Ballroom)
- 11:00 - 12:10pm - **Stage is Open for Practice** (Ballroom)
- 1:00 - 3:00pm - **Talent and Modeling Competition** (Ballroom)
- 5:00 - 6:00pm - **Reception** (Ballroom Open for Opportunity Prizes, Vendors, and More)
 - *Will-call tickets, merchandise for sale, opportunity prizes, and more*
- 6:00 - 9:00pm - **Grand Finale** (Ballroom)
 - *Who will be crowned Miss California HeartShine 2022?*

Formal Wear Emcee Card

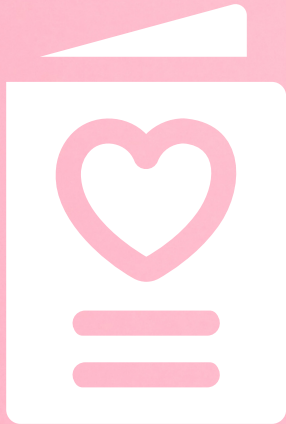


Tip for a Faster Pageant Registration:

Fill out this Formal Wear Emcee Card by Pageant Registration for an easy check-in process!

Got a new dress? Form can be updated any time before or during pageant weekend.





Finale Tickets!

Each contestant receives one(1) free chaperone ticket for the Miss California HeartShine 2022 Grand Finale. Free chaperone tickets will be automatically distributed at Pageant Registration Saturday morning (or Pre-Pageant Registration Friday afternoon). You do NOT need to RVSP online in order to receive your free chaperone ticket at pageant registration.

\$5.00 - General Admission (pre-sale)

\$10.00 - VIP ticket (pre-sale)

\$8.00 - General Admission (same-day)

\$13.00 - VIP ticket (same-day)



Grand Finale:
Sunday 2/20
5:00 - 9:00pm

Hilton Arden West
2200 Harvard St,
Sacramento, CA

Visiting Royalty is welcome.

List of Possible

On-Stage Questions

For Sweetheart and Pre-Teen Divisions

1. What has been something you've really enjoyed learning about in school?
2. Please share with us something interesting about you that most people wouldn't guess.
3. What was your favorite part about getting ready for this HeartShine State pageant?
4. What are you most thankful for?
5. If you had a magic power, which one would it be and why?
6. What is something you're really good at?
7. If you were to write a book, what would it be about?
8. Which book, movie, or TV character would you like to be best friends with in real life?
9. What Disney character are you most similar to and why?
10. Why do you want to be Miss California HeartShine (or Ambassador) (in your age category)?

List of Possible

On-Stage Questions

For Jr. Teen and Teen Divisions

1. What opportunities are you looking forward to the most about growing up?
2. What do you love doing in your free time?
3. Name two of your strengths and two of your weaknesses. Why did you pick those?
4. Out of everything you learned as a kid, what do you think you'll find most useful as a teenager?
5. If you could invent something to make your life easier, what would you create?
6. What is your favorite thing about yourself?
7. Describe your perfect morning.
8. If you could give everyone in the world just one piece of advice, what would it be?
9. What do you do differently than most people?
10. If you could pick a theme song to play any time you enter a room, what would it be and why?

List of Possible

On-Stage Questions

For Miss, Ms, Mrs, Star, and Elite

1. Which of your accomplishments are you most proud of this year?
2. What does success mean to you?
3. What is a common misconception about you as a person?
4. What was your favorite part about getting ready for this HeartShine state pageant?
5. Why do you want to be Miss California HeartShine (in your age division)?
6. What is your happiest memory?
7. If you could make up a new holiday, what would it be?
8. What is your biggest hope for the future?
9. Name three things you and I appear to have in common.
 - a. (The emcee asking you this question will be Ciara)
10. What makes you unique?
11. Among your friends, what are you best known for?
12. What is your platform and why is it special to you?
13. What's the most recent thing you've done for the first time?
14. What small small decision had a massive impact on your life?
15. If you could instantly receive a Ph.D. in any discipline including all the knowledge and experience that goes along with it, what would your Ph.D. be in?

FAQ On Interview (1/2)

Q: What is "Interview" at Miss California HeartShine 2022?

A: Interview is one of the four overall areas of required competition for contestants at Miss California HeartShine. This is a personality-driven interview where the judges will be seeking out information about your character, your leadership abilities, and your goals in HeartShine.

Q: When and where does the Interview competition take place?

A: Interview takes place in a private room at our Hilton Arden West Sacramento Host Hotel. The competition will begin with different age categories going in one at a time interview room starting at 1:00pm and going until approximately 3:00pm.

Q: What do contestants wear to the Interview competition?

A: The dress code for Interview depends on what age category the contestant is in. For those in Sweetheart, Pre-Teen, Jr. Teen, and Teen, the dress code is black pants/skirt and 2022 HeartShine pink t-shirt (same attire for Opening Number). For everyone else, the dress code is professional attire.

Q: Are parents allowed at the Interview competition?

Parents/guardians are welcome to be with their contestant all the way until they walk into the interview space. Parents of those in the Sweetheart age division and anyone in need of parent/translator assistance due to a Medical Accommodation are welcome to also enter the interview space.

Q: Do contestants need to bring their resumes?

No, this year contestants do not need to have resumes prepared for any part of pageant competition, including those in MME divisions.

Q: Will contestants need to perform their Personal Introduction for the Interview judging panel?

Yes, all contestants will perform their Personal Introduction speeches for the Interview judging panel before the interviews for their age group begin (no mic). This is not scored by the judges but rather allow them to get to know you before you sit down at their judges table to be interviewed.

FAQ On Interview (2/2)

Q: What does the Interview process look like?

You will begin by entering the room with an Outgoing 2020-21 Queen introducing you and stand on the 'x,' then perform your Personal Introduction speech for the room. After everyone in your age group has performed their Personal Introductions, each contestant will be welcomed back into the room by an Outgoing Queen as a group. They will then be seated at a table with one judge who will ask them questions (similar to those provided for On-Stage Question). Interviews are timed. Sweetheart and Pre-Teens will get to sit at each judge's table for two minutes and all other divisions will sit at each judge's table for three minutes. Contestants don't need to worry about timing their answers as it is meant to be a conversation between judge and contestant. An assigned staff member will be timing and announce to the room at the 30 second mark and time complete mark. The same assigned staff member will help guide the contestants to the next table.

Q: Will contestants be asked political questions during interview?

No, contestants will not be asked political questions. Judges are coached to ask personality and goal-driven questions to get to know the individual. Similarly, there will be no questions that need a right-or-wrong answer.

Q: What tips and tricks are available for the Interview competition?

Before your interview begins, make sure you shake out any nervous energy and speak positively to yourself, increasing your confidence with positive thinking (visualize yourself being effortlessly successful at communicating effectively and genuinely). While in the interview room, sit up in your chair, practice good posture, and speak with enthusiasm. Take your time when answering and be yourself!

Most Pageant Spirit

Every year, the winner of Most Pageant Spirit is someone who shows up on time, is positive and enthusiastic, and is an all-around great presence at Miss California HeartShine! Unlike Miss Congeniality, which is voted for by the contestants themselves, the judges for Most Pageant Spirit are the Outgoing Queens and select HeartShine staff. We'll be looking for someone who is a champion of HeartShine and is excited to participate. A person with Pageant Spirit has a positive attitude, a helpful nature, and a Heart that truly Shines!



People's Choice

Miss California HeartShine's 2022 People's Choice Contest is currently live!

In these final days leading up to the pageant, share this link to promote your journey to the HeartShine State Pageant.

Friends, family, and supports can cast a vote for their contestant via the Pageant Planet's website (QR code below).

Votes are \$1 each and there is no limit on the amount of votes someone can cast or any contestant can have.

Note: People's Choice is not required and participation in the voting process is completely optional.

Funds raised by People's Choice directly benefit our Scholarship Fund!



What to Pack

- ✓ All your confidence, authenticity, and positive attitude!
- ✓ Formal Wear gown/attire, formal wear shoes & accessories
- ✓ Pajamas for the Think Pink PJ Party
- ✓ Contestant gifts (per age division, no more than 5 contestants in any one division, in total there are approximately 20 contestants)
- ✓ Bathing suit, just in case (there is a pool at Hilton that might have COVID-19 restrictions lifted by the time pageant weekend begins)
- ✓ Personal care items such as deodorant, tooth brush, and tooth paste
- ✓ Hair styling products and equipment
- ✓ Crown and sash (if you have your City Queen title already)
- ✓ Optional attire (modeling and/or talent costumes), accessories, shoes
- ✓ Black pants or black skirt (ALL age categories need)
- ✓ Interview attire (check the needs for you specific age category)



Don't Forget:

Bring your Contribution for the Donation Drive to Pageant Registration on Saturday morning or Pre-Pageant Registration on Friday afternoon.

You can bring any of the following for the Donation Drive:

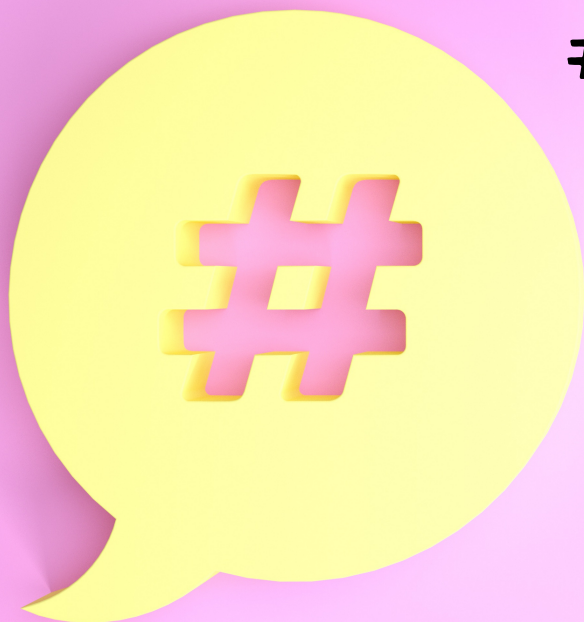
1. New stuffed animal (no battery-operated toys please)
2. New Children's Book or Young Adult Novel
3. a \$20 or more donation to the cause

Donations will be distributed by the newly crowned Miss California HeartShine 2022 to local children's hospitals.



Share Your Journey to State!

Share your journey to Miss California HeartShine 2022 by using our hashtags or sharing the link to the Pageant Planet People's Choice voting page!



#MISSCALIFORNIAHEARTSHINE2022

#HEARTSHINE

#SELFIEQUEEN

#MISSHEARTSHINE

#HEARTSHINEPAGEANTS