



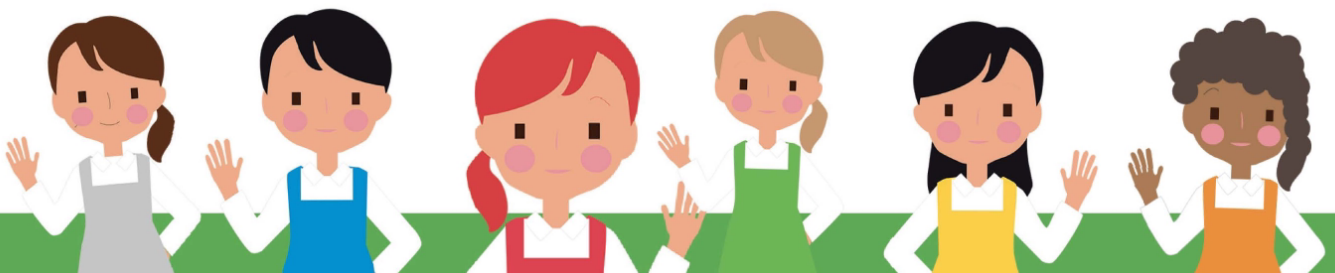
## Lost Child Policy

REYAL registration number: 000520

The care of your child is paramount, and I will always try to ensure that they remain with me and are safe.

I take precautions to avoid children escaping from the setting and to reduce the likelihood of children becoming 'lost' outside of the setting:

- Be vigilant when parents are arriving and leaving the premises.
- Children are unable to open the door alone as the safety chain is always on.
- Children are taught not to open the door without an adult.
- When undertaking fire drills, head counts take place.
- Ensuring the children, when necessary, hold my hand or the pushchair whilst we are out.
- Avoid situations that would significantly increase the risk of a child becoming lost, e.g. - overcrowded environments.
- Provide wristbands for the children to wear with my contact number on.
- Use reins for children who are likely to wander off.
- Children wear hi-visibility jackets in busy areas or where vision can be obscured.
- Talk to the children about the dangers of wandering off and of talking to strangers, teach them how to handle such situations and what to do if they become lost.
- As part of the risk assessment when going on an outing agree a rendezvous point if a child gets lost.
- Risk assessments take place throughout the outing.
- Always carry my mobile phone and money with me.
- Always carry children's contact details with me .
- Parents accompanying me on the trip are reminded they hold responsibility for their child for the duration of the outing.





*Starseed Childcare Services*



**Rutland Early Years**

In the unlikely event a child is lost, I will follow my procedure:

- Stay calm
- Immediately raise the alarm to all around me that I have lost a child and will enlist the help of everyone to look for them.
- Provide everyone with a description of the child.
- Reassure the other children with me.
- Alert the police and provide a full description
- Alert the parents of the situation
- Following the event and the safe return of the child, I will inform Ofsted/my agency.

Policy Review date June2020

