

Description	Manufacturer	Model	NOTE	QTY
2'x4' PARABOLIC TROFFER	LITHONIA LIGHTING	2PAMN G B 3 32 181D MOUT 1/3	RECESSED IN CEILING GRID	4
CEILING FAN WITH LIGHT	HUNTER	527 PALEANO 21617 / 27186	CONROLLER USE EXISTING LOCATION	9
DIRECTIONAL EXIT SIGN	COOPER LIGHTING	AP70R	WALL MOUNTED	1
EXIT SIGN	COOPER LIGHTING	AP70R	WALL MOUNTED	2
INDOOR EMERGENCY LIGHT	COOPER LIGHTING	AP250	WALL MOUNTED	3
SMOKE / HEAT DETECTOR	---	---	AS PER CODE REQUIREMENTS	3

SET #18	Hardware Sets
3 Hinges	TA3784.1 1/2 X 1/2
10 Knob Lock	10K80 LNJ
1 Cover	1431 QRS
1 Overhead Stop	9985
1 Caskwing	PK55 W 17

SET #17	Hardware Sets
3 Hinges	TA3784.1 1/2 X 1/2 NRP
1 Panel Lock w/hold	1431 QRS 820 LNJ
1 Panel Lock	1431 QRS
1 Caskwing	PK55 W 17

Typical Interior Door Specification

Follow Actual Door Frames

Provide the following Anamed brand Frames at all locations specified Series 800 two-piece adjustable Frames for 1 3/4 doors

Fabricate frames from the following gages and material using ANAMEDS AD203 and HMA 803 for nominal equivalents to gages.

6 gage cold rolled steel

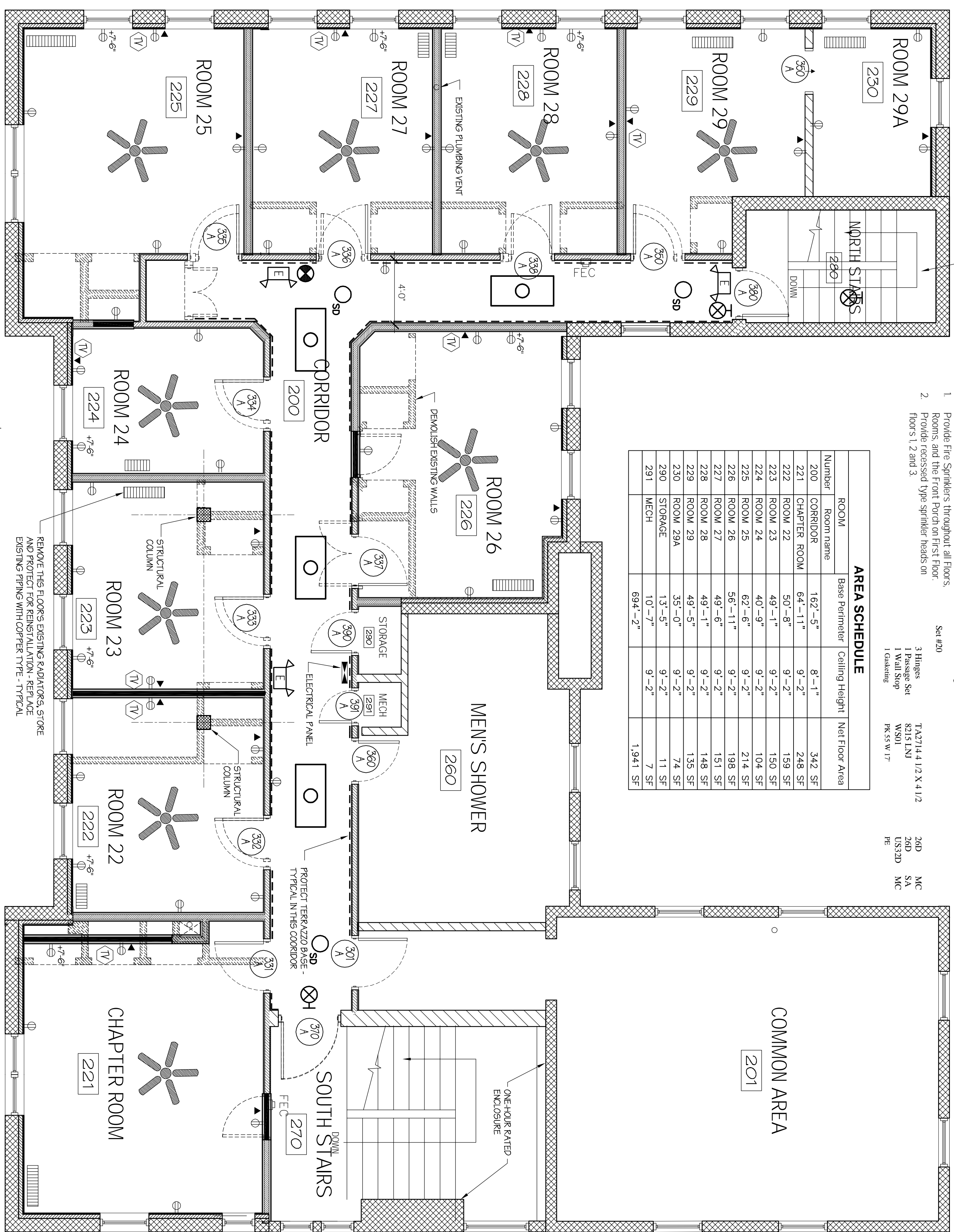
DOORS: THERMAL FUSED FLUSH

COLOR: H1333 - ACCORD MAPLE

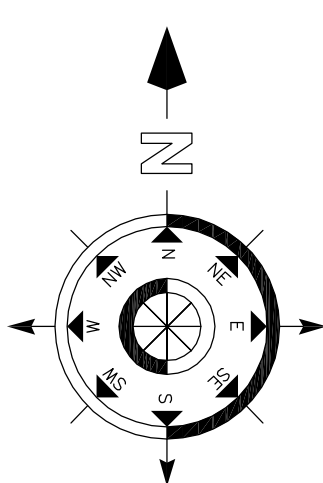
NO.	ROOM	STYLE	SIZE-PR VxH	Hardware	Fire Rating	NOTES
201A	COMMON AREA	Hinged - Single Flush	3'-0" X 6'-8"	16	20 MINUTE	2
221A	CHAPTER ROOM	Hinged - Single Flush	3'-0" X 6'-8"	16	20 MINUTE	2
222A	ROOM 22	Hinged - Single Flush	3'-0" X 6'-8"	16	20 MINUTE	2
223A	ROOM 23	Hinged - Single Flush	3'-0" X 6'-8"	16	20 MINUTE	2
224A	ROOM 24	Hinged - Single Flush	3'-0" X 6'-8"	16	20 MINUTE	2
225A	ROOM 25	Hinged - Single Flush	3'-0" X 6'-8"	16	20 MINUTE	2
226A	ROOM 26	Hinged - Single Flush	3'-0" X 6'-8"	16	20 MINUTE	2
227A	ROOM 27	Hinged - Single Flush	3'-0" X 6'-8"	16	20 MINUTE	2
228A	ROOM 28	Hinged - Single Flush	3'-0" X 6'-8"	16	20 MINUTE	2
229A	ROOM 29	Hinged - Single Flush	3'-0" X 6'-8"	16	20 MINUTE	2
230A	ROOM 29A	Cased Opening	2'-6" X 6'-8"	20	20 MINUTE	2
240A	MENS SHOWER	Hinged - Single Flush	3'-6" X 6'-8"	16	90 MINUTE	2
280A	NORTH STAIRS	Hinged - Single Flush	2'-6" X 6'-8"	17	90 MINUTE	EXISTING, 1
291A	MECH	Hinged - Single Flush	2'-0" X 6'-8"	17	20 MINUTE	2

ROOM	Room name	Base Perimeter	Ceiling Height	Net Floor Area
200	CORRIDOR	162'-5"	8'-1"	342 SF
221	CHAPTER ROOM	64'-11"	9'-2"	248 SF
222	ROOM 22	50'-8"	9'-2"	159 SF
223	ROOM 23	49'-1"	9'-2"	150 SF
224	ROOM 24	40'-9"	9'-2"	104 SF
225	ROOM 25	62'-6"	9'-2"	214 SF
226	ROOM 26	56'-11"	9'-2"	195 SF
227	ROOM 27	49'-6"	9'-2"	148 SF
228	ROOM 28	49'-1"	9'-2"	148 SF
229	ROOM 29	49'-5"	9'-2"	135 SF
230	ROOM 29A	35'-0"	9'-2"	74 SF
230	ROOM 29A	13'-5"	9'-2"	11 SF
231	MECH	10'-7"	9'-2"	7 SF
				1,941 SF

ROOM	Room name	Base Perimeter	Ceiling Height	Net Floor Area
200	CORRIDOR	162'-5"	8'-1"	342 SF
221	CHAPTER ROOM	64'-11"	9'-2"	248 SF
222	ROOM 22	50'-8"	9'-2"	159 SF
223	ROOM 23	49'-1"	9'-2"	150 SF
224	ROOM 24	40'-9"	9'-2"	104 SF
225	ROOM 25	62'-6"	9'-2"	214 SF
226	ROOM 26	56'-11"	9'-2"	195 SF
227	ROOM 27	49'-6"	9'-2"	148 SF
228	ROOM 28	49'-1"	9'-2"	148 SF
229	ROOM 29	49'-5"	9'-2"	135 SF
230	ROOM 29A	35'-0"	9'-2"	74 SF
230	ROOM 29A	13'-5"	9'-2"	11 SF
231	MECH	10'-7"	9'-2"	7 SF
				1,941 SF

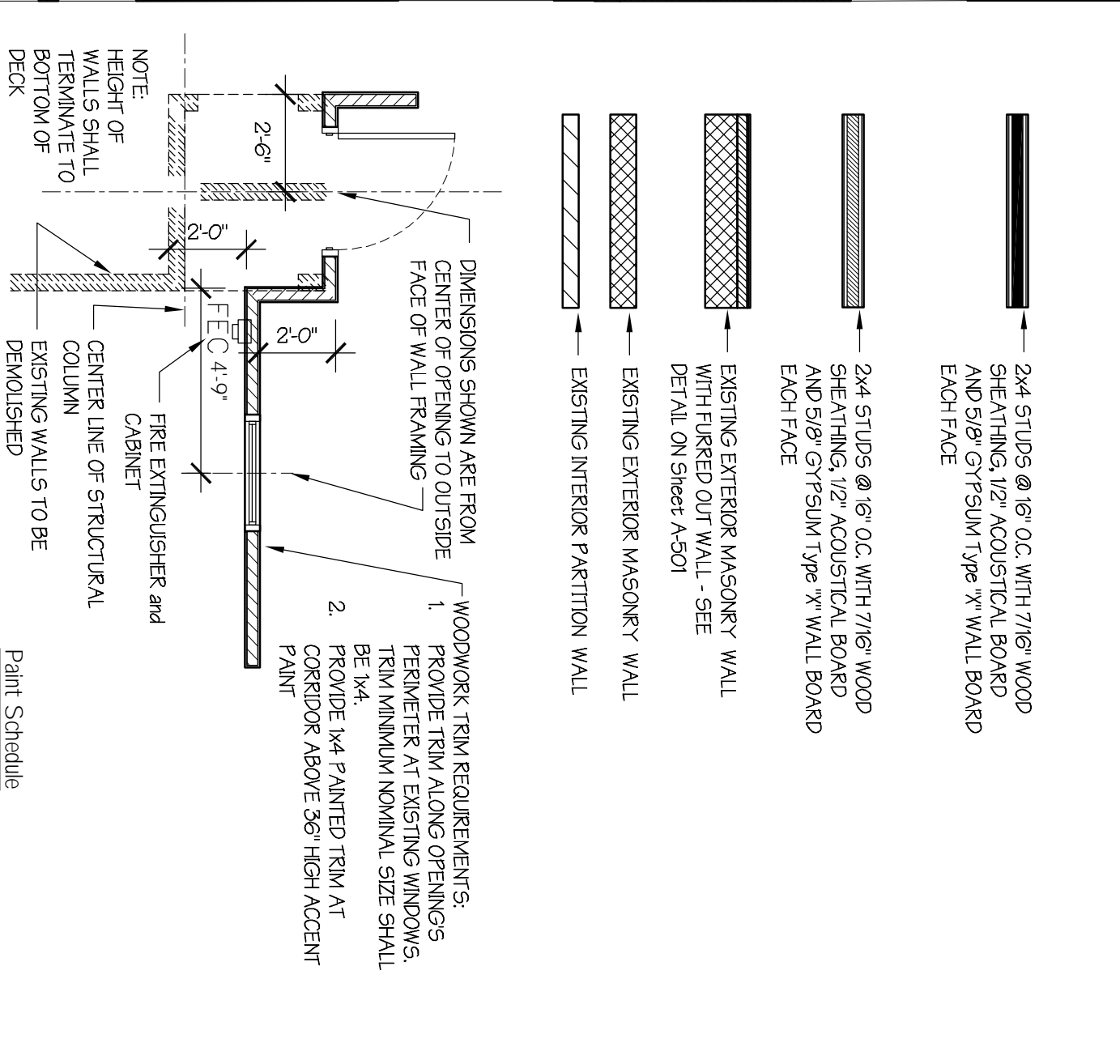


SECOND LEVEL



NO.	ROOM	STYLE	SIZE-PR VxH	Hardware	Fire Rating	NOTES
201A	COMMON AREA	Hinged - Single Flush	3'-0" X 6'-8"	16	20 MINUTE	2
221A	CHAPTER ROOM	Hinged - Single Flush	3'-0" X 6'-8"	16	20 MINUTE	2
222A	ROOM 22	Hinged - Single Flush	3'-0" X 6'-8"	16	20 MINUTE	2
223A	ROOM 23	Hinged - Single Flush	3'-0" X 6'-8"	16	20 MINUTE	2
224A	ROOM 24	Hinged - Single Flush	3'-0" X 6'-8"	16	20 MINUTE	2
225A	ROOM 25	Hinged - Single Flush	3'-0" X 6'-8"	16	20 MINUTE	2
226A	ROOM 26	Hinged - Single Flush	3'-0" X 6'-8"	16	20 MINUTE	2
227A	ROOM 27	Hinged - Single Flush	3'-0" X 6'-8"	16	20 MINUTE	2
228A	ROOM 28	Hinged - Single Flush	3'-0" X 6'-8"	16	20 MINUTE	2
229A	ROOM 29	Hinged - Single Flush	3'-0" X 6'-8"	16	20 MINUTE	2
230A	ROOM 29A	Cased Opening	2'-6" X 6'-8"	20	20 MINUTE	2
240A	MENS SHOWER	Hinged - Single Flush	3'-6" X 6'-8"	16	90 MINUTE	2
280A	NORTH STAIRS	Hinged - Single Flush	2'-6" X 6'-8"	17	90 MINUTE	EXISTING, 1
291A	MECH	Hinged - Single Flush	2'-0" X 6'-8"	17	20 MINUTE	2

REMARKS:
1. EXISTING DOOR TO REMAIN
2. EXISTING LOCATION OF DOOR OPENING



- 2x4 STUDS @ 16" O.C. WITH 7/16" WOOD SHEATHING, 1/2" ACoustICAL BOI BOARD AND 5/8" GYPSUM 1/2" W WALL BOARD EACH FACE
 - EXISTING EXTERIOR MASONRY WALL WITH FLARED OUT WALL - SEE DETAIL ON SHEET A-201
 - EXISTING EXTERIOR MASONRY WALL
 - EXISTING INTERIOR PARTITION WALL
- FIELD PAINT:
Drywall Electrical Panels
1 cts. Duration Home Interior Semi Gloss
2 cts. Duration Home Interior Semi Gloss
Color: SW6219 "White Wheat"
- CEILING PAINT:
1 ct. Premium Wall & Wood Primer
2 cts. Duration Home Interior SW7007 "CEILING WHITE" FLAT SHEEN
- Accent paint:
Drywall
1 ct. Premium Wall & Wood Primer
2 cts. Duration Home Interior Semi Gloss
Color: SW6219 "White Wheat"
- WOOD TRIM, RADATORS AND HOLLOW METAL FRAMES:
1 ct. Premium Wall & Wood Primer
2 cts. ProClassic Interior Waterbased Acrylic/Alkyd Semi-Gloss Color SW7027 "WELL-BRED BROWN" GLOSS SHEEN

Architect:

 1208 MARKET STREET, 4TH FLOOR, COLUMBIA, MO 65202
 www.thomasmcinerney.com
 thomas@thomasmcinerney.com

ANY ELECTRICAL AND MECHANICAL ITEMS SHOWN ARE DIAGRAMMATIC AND ARE SHOWN FOR THE LIMITED PURPOSE OF INDICATING LOCATIONS OF REQUIRED FUTURES. MECHANICAL AND ELECTRICAL CONTRACTORS SHALL PROVIDE DESIGN IN ACCORDANCE WITH ALL APPLICABLE CODES AND HAVING JURISDICTION. CONTRACTORS SHALL COORDINATE THE INSTALLATION OF NEW SYSTEMS WITH EXISTING SYSTEMS.

Project:
THE SIGMA NU RENOVATIONS
 630 DUBOQUE STREET
 IOWA CITY, IOWA

Project number: 09.03
Note: © COPYRIGHT UNAUTHORIZED COPYING, DISCLOSURE OR CONSTRUCTION WITHOUT WRITTEN PERMISSION BY THOMAS MCINERNEY, ARCHITECT, IS PROHIBITED.

Issue date:	Description
2011.04.14	PERMIT REVIEW

Sheet Title:
 plans and details

Sheet Number:
 a-102