

**peter &
adelaide**

made
in
toronto

WWW.BENCHMARKSIGNATUREREALTY.COM

BENCHMARK SIGNATURE REALTY INC. BROKERAGE

1020 DENISON STREET UNIT 113 MARKHAM TEL 905-604-2289 FAX 905-604-0622

WWW.BENCHMARKSIGNATUREREALTY.COM



GRAYWOOD
AN INTELLIGENT MOVE

BENCHMARKSIGNATUREREALTY.COM

**peter &
adelaide**
made
in
toronto

BENCHMARK SIGNATURE REALTY INC. BROKERAGE

1020 DENISON STREET UNIT 113 MARKHAM TEL 905-604-2289 FAX 905-604-0622

WWW.BENCHMARKSIGNATUREREALTY.COM

made in toronto.

We tend to align ourselves with location. *Where we're born, where we're from, where we're at, wherever our heart takes us.* But where we settle, where we call home, that's a choice we make on our own.

Because places can define us, they can teach us, help us grow. A place can make us who we are regardless of how we got there. A city can do that. A city can accept you, propel you, expose you, enlighten you. A city can make you. There are so many places in this world where we struggle and strive but here, here you can thrive. Here you can do more than just live, here you can be alive.

Millions make their lives here. And there's no small list of people that have made it here. And no matter where we are from, we all know what it feels like.

To be made in Toronto.



Illustration of 1020 Denison St. by K. & O. L.

The world knows Toronto from the people who've made it here, and made a name for our city on the world stage. While their stories are well known, there are others that are just beginning, whose stories are still being written. We profiled the people who call this city home and embody what it means to be made in Toronto.



**born in
sarnia,
made in
toronto.**

Michelle Epstein – Fitness Studio Co-Owner

Michelle always felt the pull towards the bright lights of the entertainment district. With the opportunity to pursue a career that fit her passion, she came to Toronto. Along with her partner, she's created a safe and inspiring place for women to achieve their personal fitness goals. When she's not at Elle Fitness and Social, Michelle stops by neighbourhood faves Jimmy's Coffee and Portland Variety to refuel and refresh.

[Read more on page 34](#)

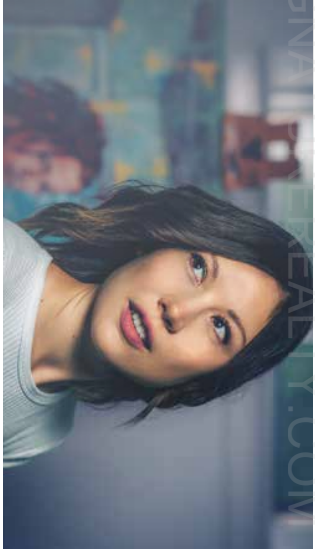


**born in
chiang rai,
made in
toronto.**

Jongkol Srirang – Head Chef

Chef Srirang came to Toronto from the northern Thailand city of Chiang Rai, known for its intricate temples and dramatic mountain setting. Celebrated for his painstakingly prepared Royal Thai cuisine, Jongkol's work alongside Executive Chef Nait Regular is turning Kiti, an entertainment district hotspot, into a Toronto landmark. Among his favourite spots in the city, Chef Srirang gathers inspiration and local ingredients from the St. Lawrence Market.

[Read more on page 30](#)



**born in
gelendzhik,
made in
toronto.**

Natalia Dichtyn – Illustrator

Born in Russia before immigrating to Toronto from Israel, Natalia was immediately impressed by the vibrantly different neighbourhoods that make up our urban mosaic. As she says, there is always a new corner to discover and rediscover, as the city expands, grows and reinvents itself. Having made her passion her career, she finds never-ending inspiration in the city's art and theatre communities that surround Peter & Adelaide, walks along the lakeshore, as well as live jazz and blues at the Rex Hotel.



**born in
richmond hill,
made in
toronto.**

Christopher Calaz – Musician

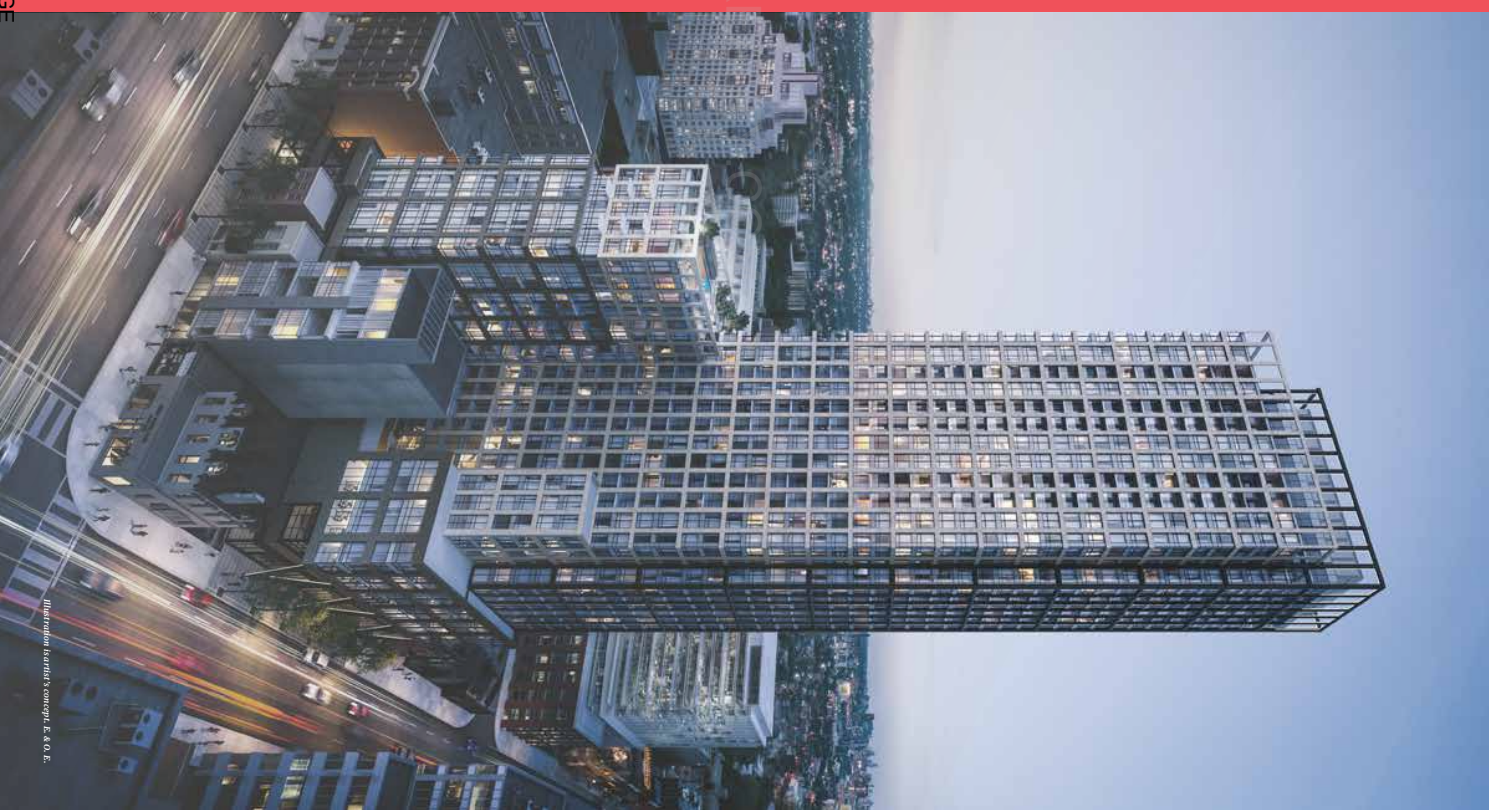
As drummer for local rock band Last Bullet, Chris quite literally marches to the beat of his own drum. Moving close to the entertainment district so he can follow his dreams, he and his band have travelled across the country touring and sharing the stage with some of the world's biggest bands like Aerosmith, Soundgarden, Jane's Addiction, Monster Truck and more. Self-managed, self-distributed and self-marketed, Chris and his bandmates truly exemplify what it means to be self-made in Toronto.

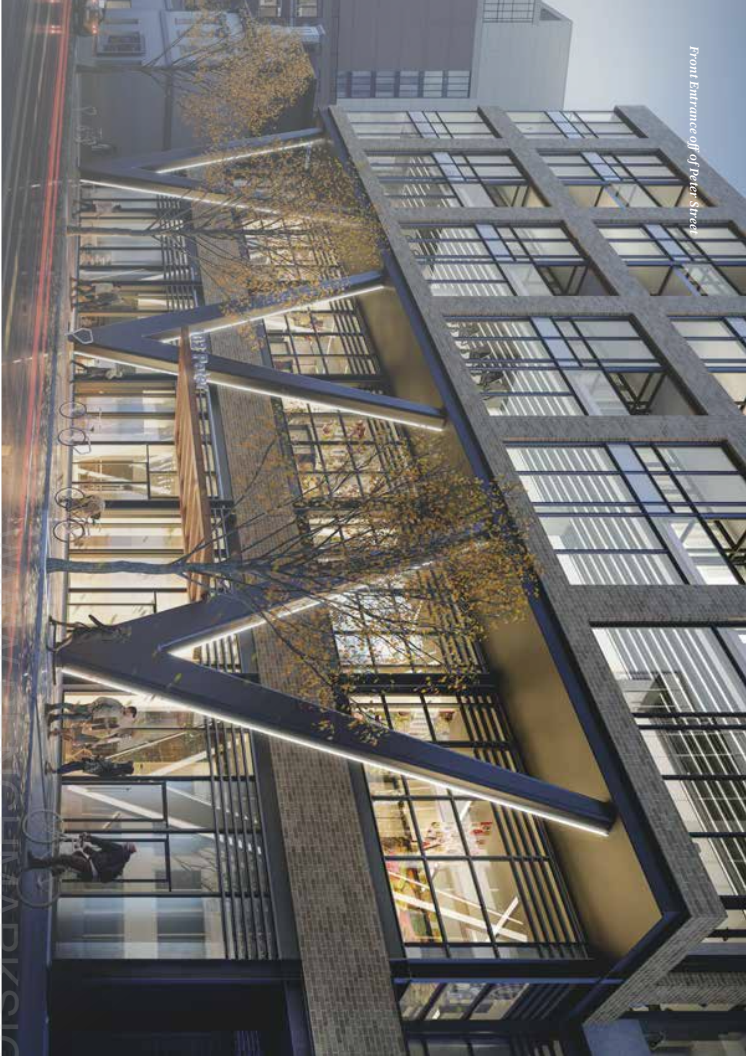
made for all.

A modern statement in brick, concrete, metal and glass, it's a tall tower that still feels connected to the streets below.

Using a series of framed openings that incorporate the heritage buildings at its base, the unique design incorporates and pays homage to the warehouse district's past. Its presence is both considered and complementary. Varied elevations and sight lines to historic buildings are a nod to its history, creating the feeling of an urban village.

WWW.BENCHMARKSIGNATURE





Front Entrance off of Peter Street



Front Lobby

made to motivate.

From the moment you step inside, you're made to feel welcome and inspired.

Taking cues from hip hotels, the lobby has a high design aesthetic with a decidedly unpretentious sensibility. Made to be impressive and approachable at once, it conjures memories from travels abroad while creating the perfect space to come home to every day.

Throughout the building, you'll discover a wealth of communal spaces that are designed to make every moment matter. Find solace from the city or match its energy with an inspired selection of amenities that let you make the most of your time.

ENCHMARK SIGNATURE REALTY INC. BROKERAGE

THIRD FLOOR



Illustration is artist's concept. E.A.O.E.

Whether you're seeking out a serene oasis or an active hub, you'll find it right at home. From an outdoor pool with private cabanas to a communal workspace and state-of-the-art fitness centre, there's always more to do, outside and in.

NINETEENTH FLOOR



Illustration is artist's concept. E.A.O.E.

THIRD FLOOR

- 1 Co-working & Recreational Room
- 2 Outdoor Lounge
- 3 Outdoor Fitness Studio
- 4 Yoga Studio
- 5 Fitness Centre
- 6 Infra Red Sauna & Treatment Rooms
- 7 Demonstration Kitchen
- 8 Private Dining Room
- 9 Party Lounge
- 10 Terrace
- 11 Outdoor Communal Dining
- 12 Kids Zone & Arts & Crafts

NINETEENTH FLOOR

- 1 Rooftop Pool
- 2 Cabanas
- 3 Lounge Deck

Outdoor Fitness Studio



Illustrations are an artist's concept. K. K. Q. R.

amenities

Fitness Centre



Mens





Illustration is artist's concept. © A.O.E.



Illustration is an artist's concept. © S.O.E.



make yourself at home.

Taking inspiration from the neighbourhood, Peter & Adelaide's design team created living spaces that are truly made in Toronto.

Further reflecting the building's architecture, each suite is an elegant homage to the city's history, updating the industrialism and eclecticism of the textile district with a refined, modern ethos. The modern esthetic offers an unpretentious sensibility that exudes elegance and distinctiveness to create a high-end, established, inviting space. The effortless melding of opulence and grit embodies the *made in Toronto* concept that's wonderfully diverse yet incredibly accepting: anything goes as long as it's authentic.



Living Room & Kitchen



Bedroom

Interior renderings are artist's concepts. Actual model floor plans, window dimensions and finishes are subject to change without notice. Amenities, light fixtures and accessories are not included in the standard finished package. © 2015

made to last.

Contemporary design meets enduring quality at Peter & Adelaide, where a range of superior features and finishes is just the beginning. Every detail in every room is not only made to impress, but made to feel timeless.

With interiors that reflect the original architecture, and quality materials at every turn, the contemporary, sophisticated design makes Peter & Adelaide an inviting and luxurious place to live.

www.benchmarksignatureproperty.com

SUITES

- Expansive ceiling 9' heights on all floors in principal rooms***
- Sliding or swinging doors open onto the balcony* or terrace*
- Laminate wood floors** throughout with the exception of the bathroom(s)*, and laundry area which will feature ceramic tile** flooring
- Smooth painted ceilings in all areas
- Interior walls and trim primed and painted in neutral colour
- Contemporary slab-style bedroom, bathroom and laundry door(s) with brushed chrome hardware
- Sliding pre-finished doors on all closets*
- Vinyl coated wire shelving in all closets

SOPHISTICATED KITCHEN FEATURES

- Custom-styled kitchen cabinetry in a selection of door finishes**
- Quartz surface countertop & backsplash**
- Single bowl stainless steel sink
- Single lever deck mounted faucet, set with black finish, pull-out spray
- Integrated 24" European-style appliances: refrigerator, cooktop, electric oven, built-in dishwasher and over-the-range microwave
- Exhaust fan vented to the exterior

LUXURIOUS BATHROOM FEATURES

- Custom-styled bathroom cabinetry in a selection of door finishes** with medicine cabinet
- Porcelain wall tile** to bathtub* and/or shower stall* surround walls
- Custom designed integrated vanity sink and counter with single lever faucet
- Full vanity-width frameless mirror and complementary light fixture
- Deep soaker bathtub* or glass shower stall* as per plan
- Pressure balanced mixing valve in the bathtub* and/or shower stall*
- White bathroom fixtures with black faucets and shower heads
- Black washroom accessories package: toilet paper holder, towel bar, and shower curtain rod
- Exhaust fan vented to the exterior

CONVENIENT LAUNDRY FEATURES

- Compact stackable washer and dryer, vented to the exterior

STATE OF THE ART TECHNOLOGY

- Structured high-speed wiring infrastructure with network centre to support the latest entertainment and high-speed communications services
- Pre-wired telephone, cable television and communication outlets. Category 6 telephone wiring to all telephone outlets
- RG6 coaxial cable to all cable television outlets. Each cable television and telephone outlet connects directly to the suite network centre

ELECTRICAL FEATURES & FIXTURES

- Individual electrical panel with circuit breakers
- White "decora style" receptacles and switches throughout
- Pre-wired track lighting in kitchen
- Ceiling mounted light fixtures in foyer* and hallway(s)*
- Carpeted ceiling outlet in dining area*, bedroom(s), and den*
- Switch-controlled split outlet in living room
- Recessed downlight in bathroom(s)*
- Electrical outlet on balcony* or terrace*
- Individually controlled heating and air conditioning system

ADVANCED SAFETY & SECURITY FEATURES

- Electronic communication system located in the secure main entry vestibule
- Electronic access control system at all main building entry points and parking garage
- Smoke alarms provided in all suites
- Sprinklers installed throughout the building and provided in all suites

Note

* Dimensions/availability determined by unit design. ** Dimensions/finishes to be selected from the vendor's samples. *** General ceiling heights are on main principal rooms and are exclusive of balconies required for mechanical purposes such as kitchen and bathroom exhausts, heating and cooling ducts, and sprinklers. Natural products (i.e. granite, wood and marble) are subject to natural variations in colour and grain. Tiles are subject to patterns, shades and colour variations. The Purchaser acknowledges that there shall be no reduction in the price or credit for any standard features listed

herein which is omitted at the Purchaser's request. References to model types or model numbers refer to current configurations models. If new types or models change, the Vendor shall provide an equivalent model. All dimensions, if any, are approximate. Actual usable floor space may vary from the stated floor area. If so stated. All specifications and materials are subject to change without notice E. & O. E., October 2017

made
to
experience.

Designed in the city, for the city, Peter & Adelaide is
located at the epicentre of culture and connection.
At the intersection of art and commerce, work and play, it's a place that puts you front and
centre for some of the world's best theatre, shopping, dining, nightlife, live music and
entertainment. Whatever you're looking for, you've got it made.

WWW.B





made to explore.

CAFES & RESTAURANTS

- 1 Ato Restaurant
- 2 Bang Bang Bar
- 3 Bazaar
- 4 Big Tomato
- 5 Ciano 101
- 6 Elba Seafood
- 7 La Carina
- 8 Oak Carven
- 9 Luna
- 10 Leo Colby's
- 11 Maccos
- 12 N1
- 13 Paris
- 14 Series Bakery
- 15 Sweet Jean
- 16 TOCA
- 17 Luckey
- 18 Nova House
- 19 Nova Bar
- 20 Jock's & Co
- 21 The Citizen
- 22 Spice House
- 23 Marben
- 24 SODA Chocolatebar
- 25 Foodtype Restaurant
- 26 Built My Boys
- 27 The Kitchen
- 28 Bazaar Coffee House
- 29 Bank House Espresso Bar
- 30 Arona Espresso Bar
- 31 Starbucks
- 32 Tim Horton's
- 33 Second Cup
- 34 Solar House
- 35 Carve House Restaurant
- 36 Horizon Tavern
- 37
- 38 Bnoli
- 39 The Burger's Priest
- 40 Yumi Maki
- 41 Tazaki's
- 42 Tazaki's Jr's Coffee
- 43 Fresh on Spadina
- 44 Burger & Kito
- 45 Jalen Baro
- 46 Jack Asari's Bar & Grill
- 47 Black Bull
- 48 Conco Restaurant & Bar
- 49 Drake One Fly
- 50 Pizzeria Adriano
- 51 St. Andrew's Subway Station
- 52 Union Station
- 53 504 King Streetcar (24 Hours)
- 54 300 Spadina Streetcar (24 Hours)
- 55 300 Spadina Streetcar (24 Hours)
- 56 300 Spadina Streetcar (24 Hours)
- 57 Princes of Wales Theatre
- 58 TIFF Bell Lightbox
- 59 Royal Alexandra Theatre
- 60 Scotiabank Theatre
- 61 Scotiabank Theatre
- 62 Roy Thomson Hall
- 63 401 Richmond
- 64 Art Gallery of Ontario
- 65 Rogers Centre
- 66 CN Tower
- 67 Ripley's Aquarium of Canada
- 68 Four Seasons Centre for the Performing Arts
- 69 Horizon Tavern

ARTS & ENTERTAINMENT

TRANSPORT

SHOPPING

- 70 Aldo Shoes
- 71 Lululemon
- 72 Lululemon
- 73 Adler Originals Toronto
- 74 GAP
- 75 Ardena
- 76 Shopping Drug Mart
- 77 LCBO
- 78 Zara
- 79 Fresh & Wild Food Market
- 80
- 81 CNO World by Lebow
- 82 Nochi Natural Foods
- 83 Livewick Foodware & Apparel
- 84 MCT Toronto
- 85
- 86
- 87
- 88
- 89 Victoria Memorial Square Park
- 90 Clarence Square Park
- 91 The Bix-Carton Toronto
- 92 Le Germain Hotel
- 93 South York Theatre
- 94 St. Andrew's Anglican
- 95
- 96 BMO Bank of Montreal
- 97 BNC Royal Bank
- 98 CIBC
- 99 CIBC
- 100 Scotiabank

COMMERCIAL

- 96 BMO Bank of Montreal
- 97 BNC Royal Bank
- 98 CIBC
- 99 CIBC
- 100 Scotiabank

born in chiang rai, made in toronto.

Jongkol Sringern – Head Chef





01

Coming to Toronto from the northern Thailand city of Chiang Rai, known for its intricate temples and dramatic mountain setting, Chef Sringeri was taken by a different kind of architecture upon coming to the city and first seeing the Fairmont Royal York hotel. Celebrated for his delicate presentation and painstakingly prepared Royal Thai cuisine, Jongkol's work alongside Executive Chef Nait Regular is turning Kin into a Toronto landmark of its own.



02

While Toronto has been his home base for the past three years, the décor at Kin pays tribute to Jongkol's homeland including a collection of framed photographs of the Thai Royal Family.



03

Echoing the diversity of the city, Chef Sringeri's dishes highlight the varied regional traditions and cuisines found across Thailand, with a Northern focus. The menu is designed to give experts a taste of what they've been missing from home and Torontonians a chance to try traditional dishes that they haven't likely experienced before.



04

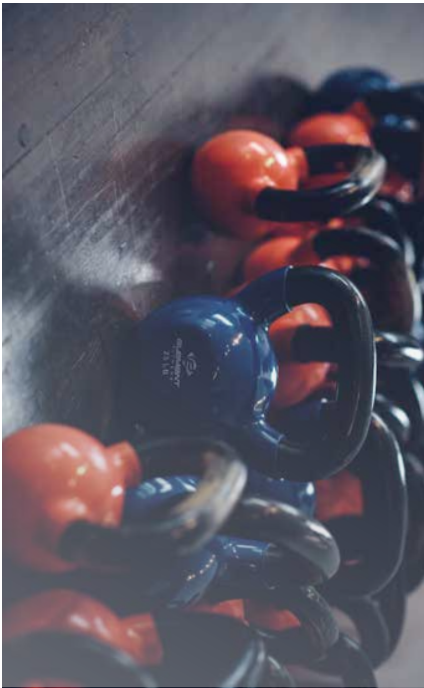
Among his favourite spots in the city, Chef Sringeri sources local ingredients from the St. Lawrence Market and draws inspiration from the many different types of incredible cuisine that can be found around every corner.

WWW.BENCHMARKSIGNATUREREALTY.COM

born in
sarnia,
made in
toronto.

Michelle Epstein – Fitness Studio Co-Owner

loDies



02 When she's not at Elle Fitness and Social, Michelle stops by neighbourhood faves Jimmy's Coffee and Portland Variety to refuel and refresh. Taking the kids to the ROK and taking in a game during baseball and basketball season are some of her other favourite activities outside of the gym.



03 Taking a break from the treadmill, Michelle finds fresh air and inspiration on long runs down by the lake, admiring the city skyline as she goes. Midtown runs by Casa Loma and the beautiful homes of Rosedale are other personal highlights.



01 Having lived all over Canada, Michelle always felt the pull towards the bright lights of the big city. With the additional draw of love and the opportunity to pursue a career that fit her passion, she came to Toronto. Along with her partner, she's created a safe and inspiring place for women to achieve their personal fitness goals.



04 Having made her passion into a successful career, Michelle looks forward to helping more women reach not only their fitness aspirations, but to passionately pursue their life goals in the city that's made for them.



Scoop



Ocean Club



The Mercer

Illustrations are artist's concept. E. & O. E.



The Ritz-Carlton Toronto



FIVE

an intelligent move.

Shouldn't home be both a place to rest your head and a rewarding investment? That has been Graywood's philosophy for over three decades.

From our home base in Toronto, we have developed an impressive portfolio of single-family homes and townhomes, boutique mid-rise condo buildings and high-rise towers throughout North America. From the landmark Ritz-Carlton Hotel and Residences to notable communities like Ocean Club and The Mercer, we believe in developing spaces that are not just optimized for life today, but built with a vision of a prosperous tomorrow.

Because if a home is one of the biggest investments you'll ever make, shouldn't your real estate developer also be an investment expert?

We think so. And that is why we're both.



made for you.

WWW.BENCHMARKSIGNATUREREALTY.COM

Toronto is made by the people who call it home. Those who not only make a living here, but make where they live a statement of who they are. It's a city synonymous with inclusion and inspiration. Find your place, follow your passion and make it here.

BENCHMARK SIGNATURE REALTY INC. BROKERAGE

1020 DENISON STREET UNIT 113 MARKHAM TEL 905-604-2289 FAX 905-604-0622
WWW.BENCHMARKSIGNATUREREALTY.COM

WWW.BENCHMARKSIGNATUREREALTY.COM

peterandadelaide.com