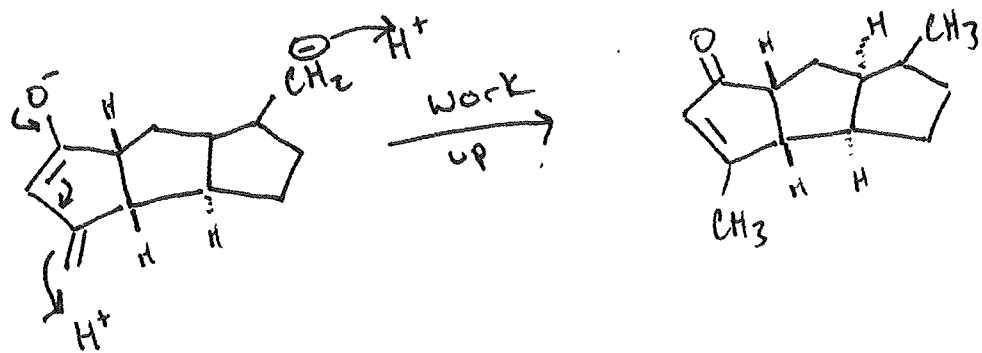
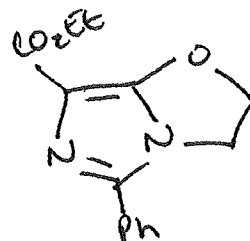
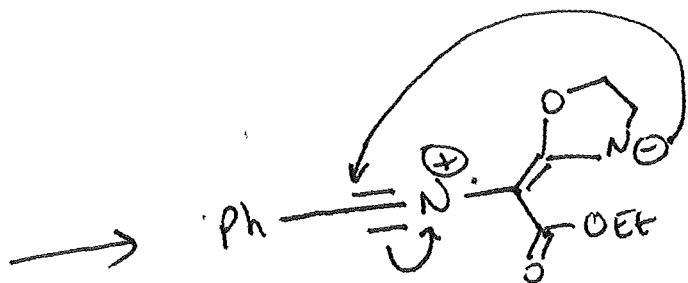
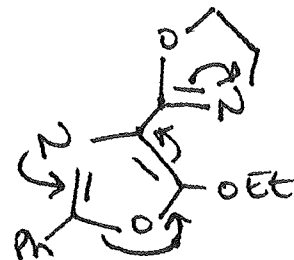
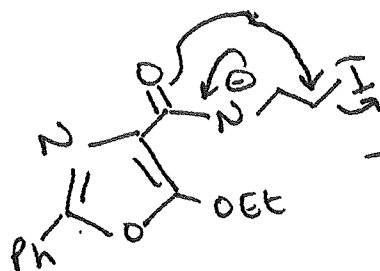
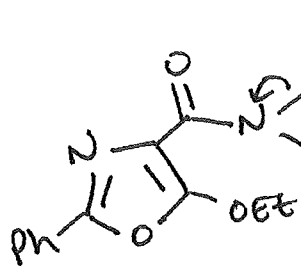
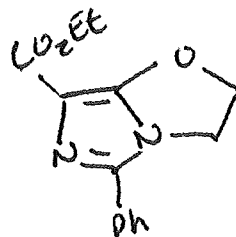
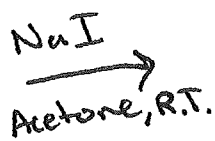
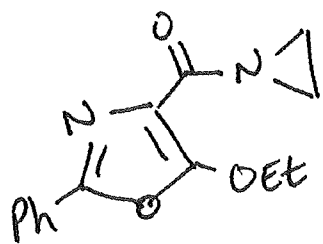
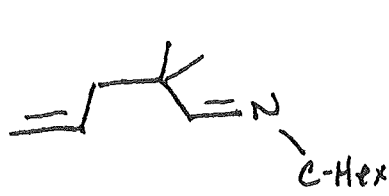


Redraw







1) $\text{Br}_2, \text{CH}_2\text{Cl}_2, 0^\circ\text{C}, 20 \text{ min.}$
 2) $\text{KCN}, \text{THF}:\text{H}_2\text{O} (1:1), \text{R.T.}, 4 \text{ h.}$
 3) $\text{NaN}, \text{DMF}, 40^\circ\text{C}, 6 \text{ h}$

