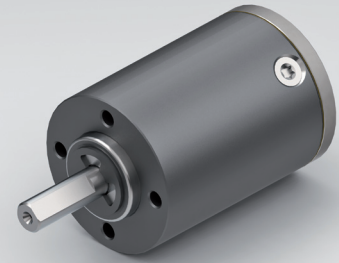


**Standard scope of delivery** Gearbox lubricated for duration of service life, dust-proof package, motor pinion, mounting screws, paper gasket and assembly instructions (adapter plate optional).

Customized versions also available for small quantities.

Stainless steel version on request.

## PLANETARY GEARBOX GPL026



	1-STAGE	2-STAGE	3-STAGE			
Ratio i:1	Max. motor shaft-ØD	Ratio i:1	Max. motor shaft-ØD	Ratio i:1	Max. motor shaft-ØD	
				81.37		4
				112.67		4
				143.97		4
3.5	4	26	4	216	2	
		18.78	4	199.33	4	
4.33	4	33.22	4	276	2	
6	2	46	2	352.67	2	

Rated torque continuous	Type Standard	Type R	Nm	0.3	1	3
Rated torque intermittent	Type Standard	Type R	Nm	0.6	2	6
Rated torque continuous	Type V		Nm	0.6	2	3
Rated torque intermittent	Type V		Nm	1.2	3	6
Max. efficiency at rated torque			%	90	85	80
Average backlash at no load	Type Standard	Type V	arcmin ≤	20	35	50
Average backlash at no load	Type R		arcmin ≤	10	20	30
Weight without adapter plate			g	70	90	115
Dimension L			mm	25	33	41
Dimension A			mm		5	
Dimension B			mm		14	
Max. radial load	F <sub>R</sub>	7 mm from shaft end	N		50	
Max. axial load	F <sub>A</sub>		N		40	
Max. continuous rated speed at drive			min <sup>-1</sup>		6000	
Max. intermittent rated speed at drive			min <sup>-1</sup>		10000	
Temperature range	Type Standard	Typ R	°C		-30 / +90	
Temperature range	Type V		°C		-40 / +90	

Type V = heavy duty version | Type R = reduced backlash version

Changes reserved © GYSIN AG | 05/2015