

VOLUNTEER PROJECT

July 8, 2017
9am – Noon

Join us as we work in the shade to:

- Remove ivy from tree trunks and McMullen wall
- Raise low hanging branches
- Pick up trash
- Fill groundhog holes with gravel

Snacks & beverages provided



Community Service Certificates available



FOOD DRIVE COLLECTION

FHRC collects food items which are donated to a local food cupboard at the end of the day. Items to share: canned soup, peanut butter, tuna, beans, cereal and pasta.

For Statewide Resources to assist with Loss and Grief visit the website of the Delaware Grief Awareness Consortium:
www.degac.org

Mailing Address:
Friends of Historic Riverview Cemetery
P.O. Box 2173
Wilmington, DE 19899
www.riverviewcem.com

A MELTING POT OF DIVERSITY

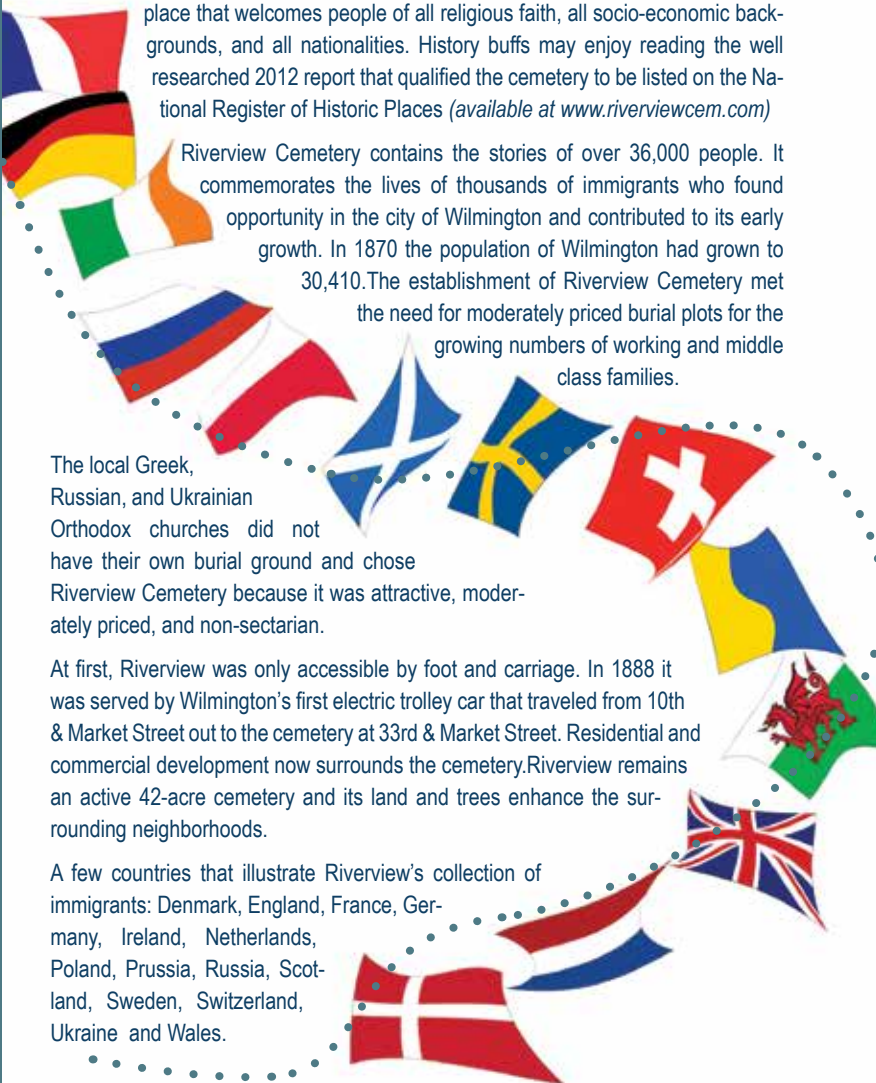
Riverview Cemetery withstood the test of time and is as relevant today as it was 145 years ago. Friends of Historic Riverview Cemetery continue to serve the community by providing a dignified and affordable final resting place that welcomes people of all religious faith, all socio-economic backgrounds, and all nationalities. History buffs may enjoy reading the well researched 2012 report that qualified the cemetery to be listed on the National Register of Historic Places (available at www.riverviewcem.com)

Riverview Cemetery contains the stories of over 36,000 people. It commemorates the lives of thousands of immigrants who found opportunity in the city of Wilmington and contributed to its early growth. In 1870 the population of Wilmington had grown to 30,410. The establishment of Riverview Cemetery met the need for moderately priced burial plots for the growing numbers of working and middle class families.

The local Greek, Russian, and Ukrainian Orthodox churches did not have their own burial ground and chose Riverview Cemetery because it was attractive, moderately priced, and non-sectarian.

At first, Riverview was only accessible by foot and carriage. In 1888 it was served by Wilmington's first electric trolley car that traveled from 10th & Market Street out to the cemetery at 33rd & Market Street. Residential and commercial development now surrounds the cemetery. Riverview remains an active 42-acre cemetery and its land and trees enhance the surrounding neighborhoods.

A few countries that illustrate Riverview's collection of immigrants: Denmark, England, France, Germany, Ireland, Netherlands, Poland, Prussia, Russia, Scotland, Sweden, Switzerland, Ukraine and Wales.



July 8, 1872 is an important date in the history of Riverview Cemetery. Elizabeth Warren (age 63) was the first person buried! Her gravestone still exists today in Section 5, Lot 33. Does anyone know anything about Elizabeth Warren? Look for our "Treasure Hunt Question" in other newsletters or start your own treasure hunt and pass on your information. We will add it to our Oral History Project.

FACTS OF INTEREST

- A sample of just 1000 people, representing 19 nationalities are remembered by their families in *Reading the Stones – A Collection of Memories from the First State*.
- Riverview Cemetery has burial ground on the southeast and northwest side of Market Street that is reserved for Baby Burials.
- Riverview Cemetery provided burial ground for the State's poor, the unknown, or those without family. The area was known as the pauper's field or public ground. This practice continues today under the leadership of FHRC.

The mission of Friends of Historic Riverview Cemetery is to operate and maintain Wilmington's most culturally diverse, non-profit, public cemetery, and to support its restoration and preservation.

Riverview Cemetery • 3300 North Market Street • Wilmington, Delaware • (302) 762-4705



FROM *the* BOARD

CONSTRUCTION: Friends of Historic Riverview Cemetery will complete the long-awaited renovation of the former 1951 chapel/office building this year! We give thanks to the many FHRC volunteers, members, partners, and grantors who donated to the Capital Campaign. The design documents were completed by Montchanin Design Group, Inc. General Contractor bids were received and the contract was awarded in early June.

Construction activity began in late June starting with basement waterproofing. Interior wall framing, mechanical, plumbing and electrical work will continue during July. We will update you on progress in the coming newsletters. We anticipate the Grand-Opening of the Visitor & Information Center in early fall. If you have not yet made a donation to the Capital Campaign please do so this summer. Be part of the next chapter in Riverview Cemetery's story.

PROJECTS *of* NOTE

7 GREAT REASONS for THANKS!

1 On Memorial Day... it rained. The Resurrection Center graciously opened its doors and people came together to remember veterans who served and died, honor our living veterans and support The Delaware Center for Homeless Veterans. We were inspired by speakers and musicians. And we sang together "This Land is Your Land, This Land is My Land." Despite the weather it was a day of comradery and fellowship.



3 Freshman students at St. Georges Vo-Tech mulched the circular hedge, cemetery entrances, and half of Washington Street daylilies in the rain.



5 Volunteers from REACH made it possible for us to complete weeding and mulching of the other half of Washington Street daylily flower beds.

CAPITAL CAMPAIGN UPDATE

Thank you to our May and June

CONTRIBUTORS:

Genevieve Luchejko	\$300
Joyce and Michael Woods	\$ 25
Charlotte Lenhoff	\$ 20
for refreshments for volunteers!	

MEMBERSHIP: Friends of Historic Riverview Cemetery is a 501c/3 non-profit charitable organization. Your membership is tax-deductible. Join with others and become a Lifetime Member this year! Visit the website for information. You may also renew annually.

ESTATE PLANNING: Consider Riverview in your Will. Gifts of stock, retirement plan assets, life insurance and real estate are all welcome. Contact us for assistance.



2 Bank of America volunteers raised sunken veteran grave markers and weeded Washington Street daylilies.



4 Volunteers worked in teams and placed American Flags on veteran graves on May 20 & retrieved them on June 10. Thanks to Computer Aid Inc (CAI) & Military Support Assistance Group MSAG.



6 Neighbor & FHRC Partner, Rich Joyce (owner of Franciscan Lawn & Labor), trimmed weeds from the sidewalk and curb along Washington Street.

7 Thanks to Warden Evans for the good work of officers & men at the Plummer Community Correction Center for their grass cutting and gravestone trimming partnership!

Visit our website: www.riverviewcem.com



Lee Anderson
President



Tedd Cocker
Vice President



Mary King
Secretary



Kate Wilhere
Treasurer



Debbie Dodd
Member-at-Large

BURIALS

The Board of Directors assisted with 2 burials in May and 1 burial in June.

CREMATION

Families who choose cremation at the time of death may select a cemetery at a later time. We are available to assist you with the placement of your loved one's cremains at Riverview Cemetery. Four family-related cremains may be placed in a single gravesite (a new grave or a grave belonging to your relative). Call 302-762-4705 to discuss this affordable option.

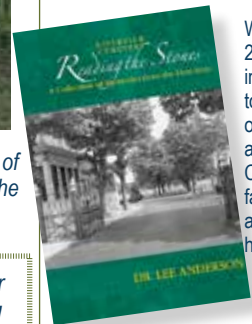
Veteran count 1057

To view a complete list and Find A Grave page, please visit www.riverviewcem.com

ORAL HISTORY PROJECT

Tell us in writing about your relatives at Riverview Cemetery and we will include the information in a 3-ring binder that will be placed in the Visitor & Information Center. With over 36,000 people at Riverview, there are many more stories to tell.

Reading the Stones, A Collection of Memories from the First State.



Within this book 220 families introduce us to 1000 loved ones interred at Riverview Cemetery. A fascinating look at Delaware's history.

