

The Time Journey

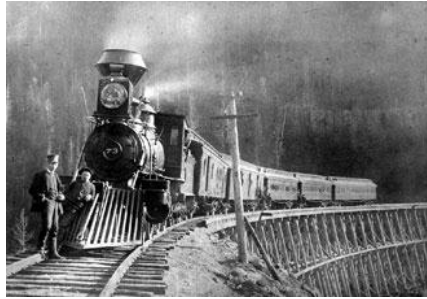
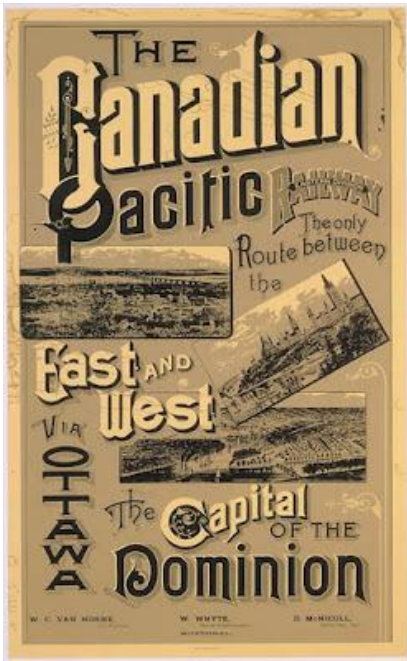


Parkdale

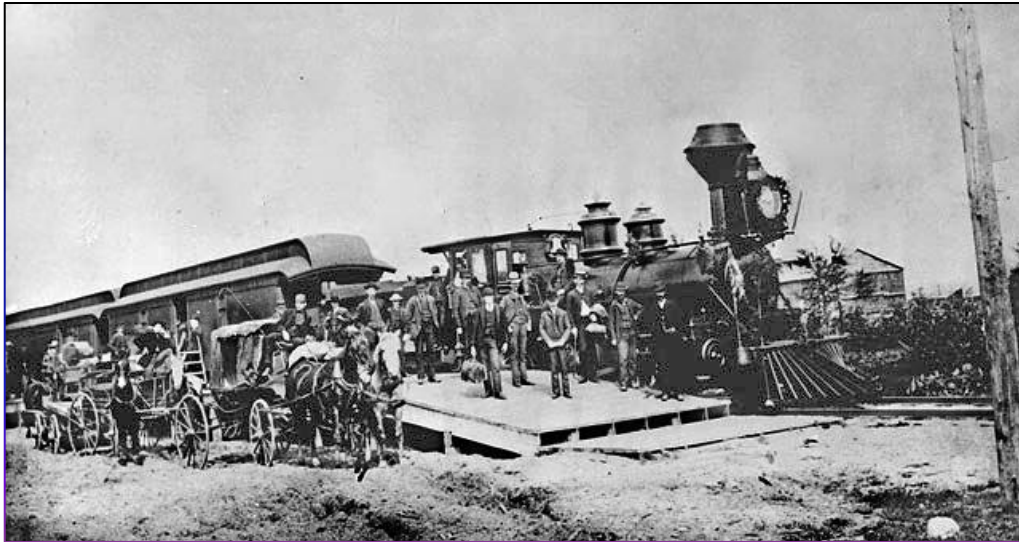
Researched and created May 2012 by
Parkdale resident Macel Hebert
122-37 St. NW

Calgary/Parkdale TimeLine

1883 onward.....



August 10, 1883 the first train reaches Calgary.



Sept 1905 Alberta become a Province

In July 1886 the first TransCanada Canadian Pacific Railway train passes through Calgary.

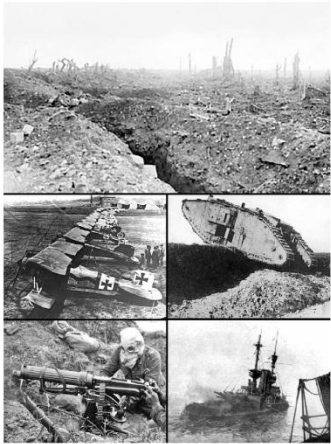
Ethnic Origins of Calgary's Population, 1901-1961														
Ethnic Group	1901		1911		1921		1931		1941		1951		1961	
	No.	%	No.	%	No.	%	No.	%	No.	%	No.	%	No.	%
Asian	64	2.6	56	0.1	729	1.2	1,136	1.4	849	0.9	1,110	0.8	2,688	1.0
British	3,578	80.2	30,884	71.3	52,206	82.4	64,400	76.4	67,846	76.3	88,416	68.5	147,030	58.9
French	125	3.0	705	1.6	1,428	2.2	1,755	2.0	2,279	2.6	4,012	3.1	9,528	3.8
German	197	4.8	2,608	6.0	876	1.4	3,751	4.5	3,014	3.3	8,794	6.8	26,917	10.8
Italian	-	-	114	0.3	425	0.7	620	0.7	661	0.7	1,091	0.8	4,720	1.9
Dutch	23	0.6	348	0.8	628	1.0	1,035	1.3	1,559	1.7	2,528	2.0	8,682	3.5
Scandinavian	195	4.8	977	2.2	1,395	2.3	3,413	4.0	3,757	4.3	6,631	5.2	4,493	1.8
Russian*	64	1.6	485	1.1	1,973	3.1	1,028	1.2	2,315	2.6	1,981	1.5	3,584	1.4
Ukrainian	-	-	-	-	153	0.2	807	1.0	959	1.0	3,033	2.4	7,075	2.8
Polish	-	-	928	2.1	287	0.5	807	1.0	1,310	1.5	2,151	1.6	5,106	2.0
Jewish	-	-	369	0.8	1,247	2.0	1,622	1.9	1,794	2.0	1,713	1.3	1,856	0.7
Native Peoples	101	2.3	878	2.0	22	-	8	-	14	-	62	-	335	0.1
Others and Unspecified	51	1.1	6,152	11.7	1,936	3.0	3,779	4.6	2,547	3.1	7,538	6.0	27,627	11.3
Total	4,398	100	43,704	100	63,305	100	83,761	100	88,904	100	129,060	100	249,641	100



Calgary's Growing Population			
Year	Population	Growth	Numerical
			Increase
1891	3,876	—	—
1901	4,091	14%	522
1911	43,704	961%	39,613
1921	63,305	45%	19,601
1931	83,761	32%	20,456
1941	88,904	6%	5,143
1951	129,060	45%	40,156
1961	249,641	93%	120,581
1971	403,319	62%	153,678
1981	591,857	47%	188,538
1991	636,104	8%	44,247
2001	951,395	50%	315,291
2011	1,090,936	15%	139,541

Impacts to Calgary/World Growth

CPR Train Transportation opens up Canada 1886 - 1914.
Inexpensive land and a new life for immigrants create a rush.

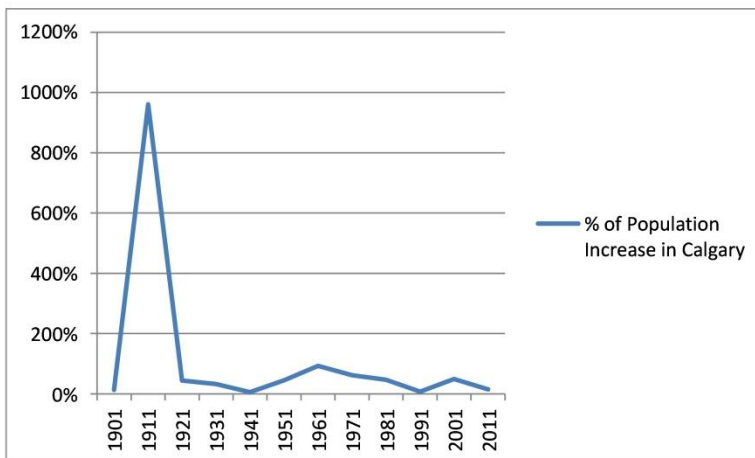
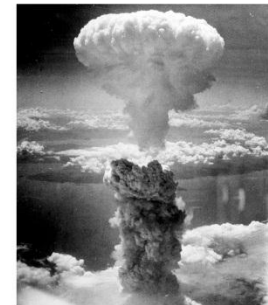


First World War impact 1914 to 1918

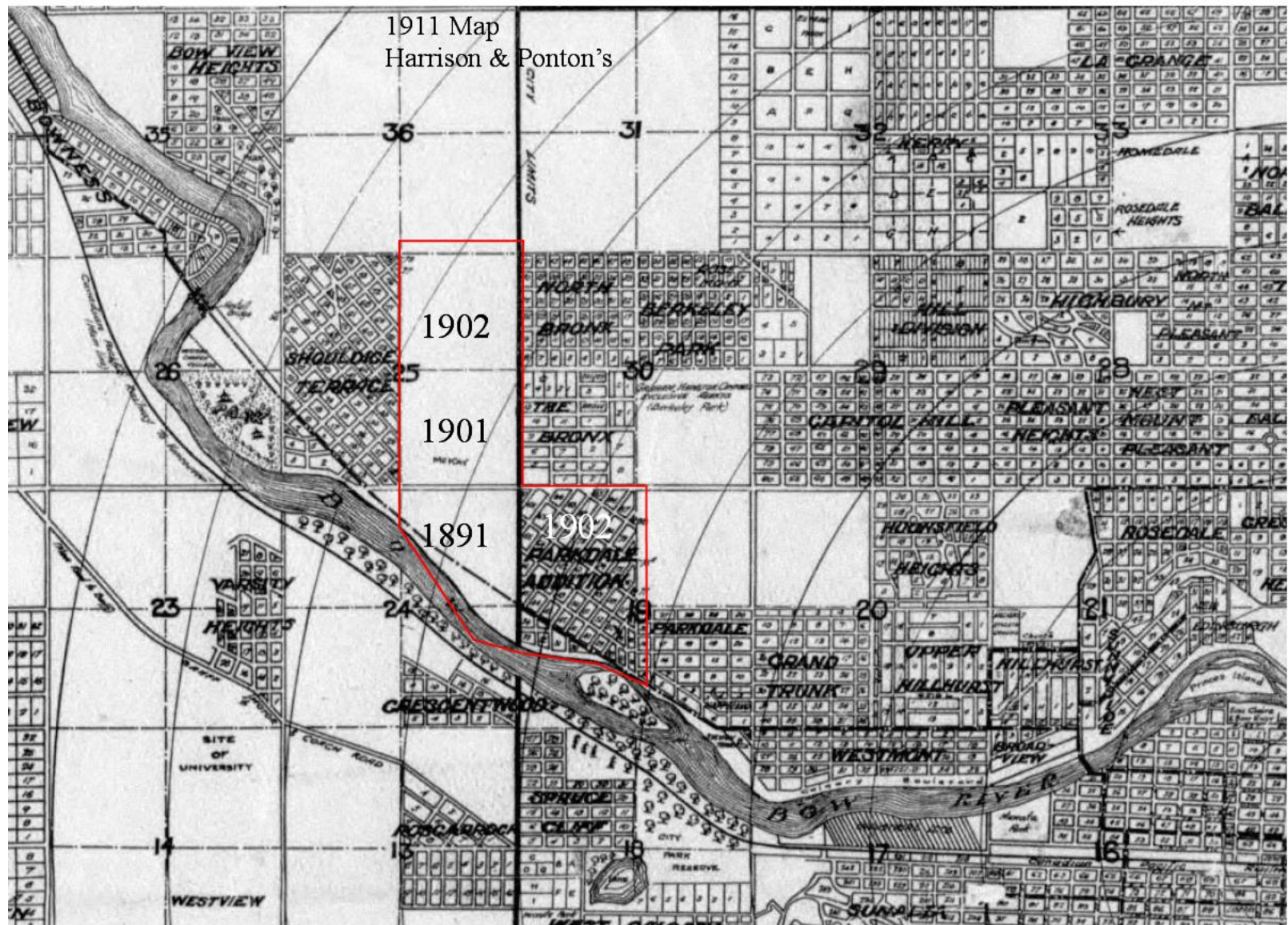
Depression 1929 to 1939

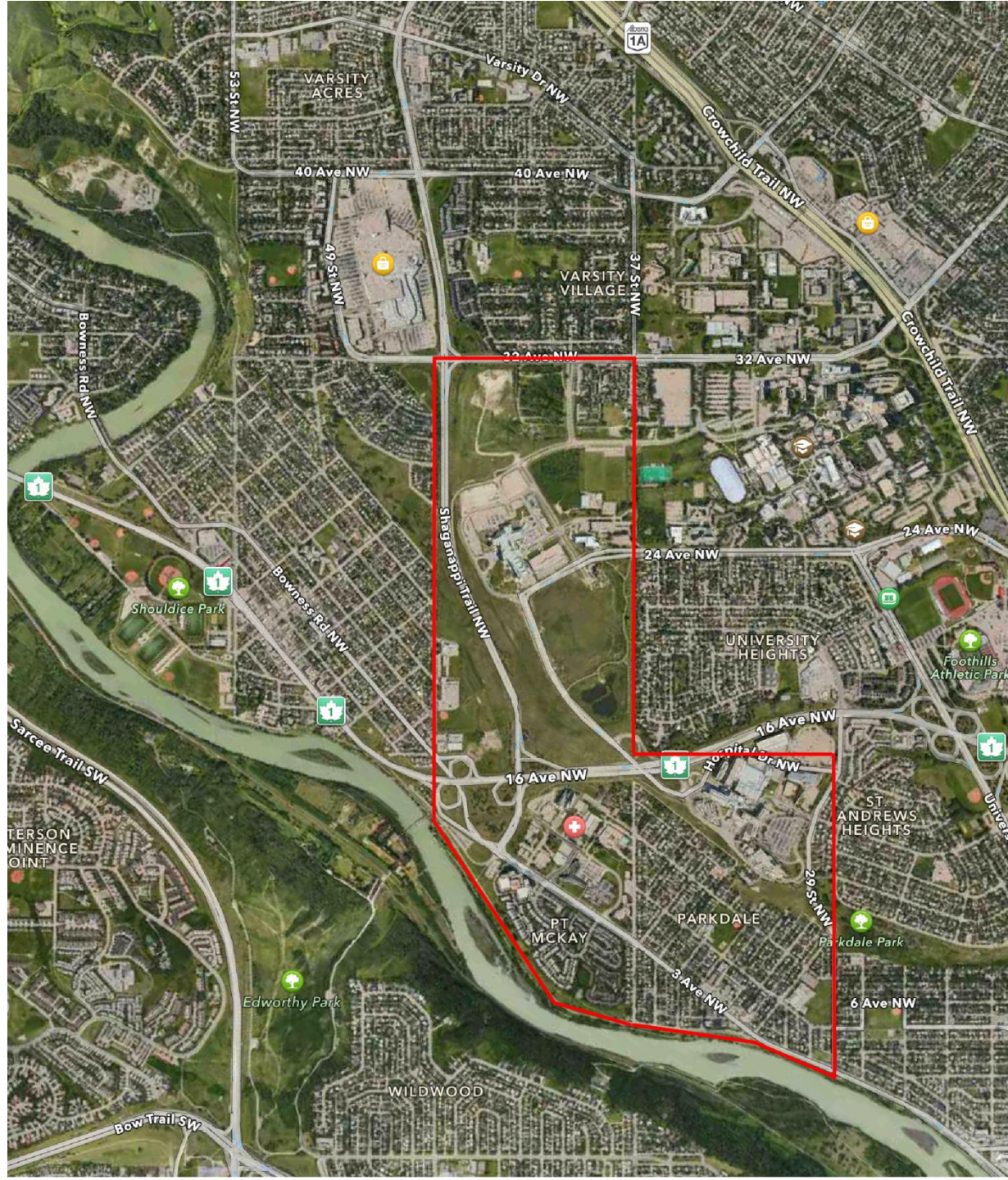


Second World War impact 1939 to 1945



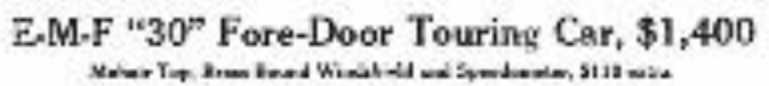
1891





THE GALLATY DAILY HERALD, SATURDAY, SEPT. 3, 1915

That, in a sentence, epitomizes our 1912 announcement of E-M-F "30" and Flanders "20" Cars



BOMBARDMENT OF TRIPOLI IS SAID TO BE UNDER WAY

Unconfirmed Report in Rome

Quits the Fight



BIG PREPARATIONS FOR CROSSING OF VICE-REGAL PARTY

Duke of Connaught Is Bringing Own Horses and Motors

Across

PRINCESS PATRICIA COMING FOR XMAS

Will Have Naval and Military Guards at Leaving Liverpool

(Special Cable to The Montreal Star and The Calgary Herald)
(Registered According to Copyright Act)
LONDON, Oct. 3.—Elaborate preparations are being made for the comfort of Duke and Duchess of Connaught on the Empress of Ireland, leaving Liverpool on Friday. A whole alley on the other deck has been reserved for them and their

New Bylaw for Storage of Gasoline

An attempt will be made by the commissioners to present a by-law to control regulating the storage of gasoline. As the by-law stands at present it is not satisfactory to the owners of garages neither does it suit the city officials, as it does not afford the proper protection.

It is likely that the by-law will compel the storage of gasoline in proper tanks under ground to a depth of at least four feet. This will satisfy the insurance men and afford reasonable protection against explosions, without putting the owners of the buildings to any great expense, when the benefits are considered.

The building officials are at present going around the garages and making what provision they can against possible accidents until the new by-law has been brought in and passed by the aldermen.

ASSOCIATED CHARITIES WILL MEET FRIDAY TO PLAN WORK OF WINTER

In order that plans may be formulated for its work in this city the Associated Charities organization will hold a meeting on Friday afternoon at

and this work nearly all falls to Associated Charities, the Salvation Army and other organizations. In fact the duties that devolve upon Associated Charities are such as

NEW FOOD BYLAWS AND WHAT DEALERS HAVE TO SAY ABOUT THEM

THE CALGARY DAILY HERALD, MONDAY, OCTOBER 2, 1911.

EIGHT PER CENT

IS THE RATE OF INTEREST WHICH IS ALWAYS OBTAINABLE ON FIRST MORTGAGES, EITHER ON IMPROVED CITY PROPERTY OR FARM LANDS.

None can deny that the man who can always get 8% on his money is doing well for himself, and yet there is often a shortage of funds available for loaning in this district, owing to the fact that the average man prefers to use his capital in speculating in Real Estate, being assured of making a larger return on his money than he would by loaning it out on first mortgages. There are many, however, who believe that there is a certain risk involved in Real Estate speculation and prefer to risk. It is for the information of this class of investor that we are giving the following instances of 8% first mortgages held at the present moment.

CITY PROPERTY

\$1600 was loaned by a local Loan Company on a 7-roomed new house situated on one of the best residential avenues in the city. The house and property is valued at \$5000 and the mortgage was put on for 5 years at 8%.

\$2000 was loaned by a private party in the city on a 9-roomed new house in a first class district. The value of the house and property is \$5150 and the mortgage is for 5 years at 8%.

FARM LANDS

First mortgage of \$3600 on 320 acres of fine farm land 3½ miles from a station. Nearly half of the land is cultivated and there is a good house, barn, stable and granary on the property. Market value \$35 per acre, making \$11,200 in all. The mortgage was taken out for 5 years at 8%.

First mortgage of \$1000 on 160 acres of first class land with 45 acres under cultivation, situated 10 miles from a station and valued at \$20 an acre. The mortgage was for 5 years at 8%.

There are millions of foreign capital invested as above in this country and there is room for millions more. As you will see, the amount of the loan never reaches 30% of the market value of the property, making the investment a perfectly safe one. It will pay you to investigate. For further information write J. J. Cameron.

P. C. A. Anderson.

CAMERON & ANDERSON

Real Estate and Financial Brokers
Farm Lands, City Property, Coal Lands, Timber Tracts, Loans.
205, 8th Avenue West, Calgary, Alberta, Canada.
Cable Address: "Camander."
Phone 3181

THE CALGARY DAILY HERALD, SATURDAY, SEPT. 9, 1911.

GUNDY, GUNDY & FINCH
LIMITED
REAL ESTATE BROKERS

M. J. Finch, Manager

SNAPS

Mount Royal—Block "A," Lot 18, at \$1525.

Parkdale—Six lots on corner in Block 15, for \$325 each.

Crescent Heights—Three fine lots close to car line for only \$525 each.

Elbow Park—Only \$825 each for two beautiful lots on flat facing east, Block 29.

Office: 213 Grain Exchange

Phone 3911

PARKDALE ADDITION IS SELLING FAST

131 Lots of the 200 Lots Placed on Sale Wednesday Morning are Still for Sale as per the Following List:

Block	Price per Lot
Block 39—Lots 5, 10, 11	\$475
Block 40—Lots 1 and 2	\$550
Block 41—Lots 20 to 24	\$475
Block 42—Lots 35 to 38	\$500
Block 43—Lots 1 to 4	\$500
Block 44—Lots 5 to 10	\$475
Block 45—Lots 1 to 4	\$425
Block 46—Lots 5 to 10	\$400
Block 47—Lots 1 to 4	\$450
Block 48—Lots 5 to 10	\$475
Block 49—Lots 1 to 4	\$450
Block 50—Lots 5 to 10	\$450
Block 51—Lots 1 to 4	\$450
Block 52—Lots 5 to 10	\$450
Block 53—Lots 1 to 4	\$450
Block 54—Lots 5 to 10	\$450

TERMS: One Third Cash, Balance 3, 6, 12, 18 Months.
St. Cars Now in Operation Through Parkdale Addition.
Automobiles at Your Service for Inspection of Property.

For Sale by the Owners

Scott & Hartrout, Ltd.

202 Grain Exchange Building 1st St. W. --- Telephone 3939

Block	Price per Lot
Block 55—Lots 2 to 9	\$425
Block 56—Lots 10 to 21	\$500
Block 57—Lots 22 to 24	\$425
Block 58—Lots 25 to 40	\$400
Block 59—Lots 1 to 4	\$400
Block 60—Lots 5 to 10	\$400
Block 61—Lots 11 to 16	\$425
Block 62—Lots 17 to 20	\$375
Block 63—Lots 21 to 24	\$350
Block 64—Lots 25 to 36	\$450
Block 65—Lots 37 to 40	\$450
Block 66—Lots 1 to 4	\$450
Block 67—Lots 5 to 10	\$450
Block 68—Lots 11 to 16	\$450
Block 69—Lots 17 to 20	\$450
Block 70—Lots 21 to 24	\$450

Parkdale

Lots 5 and 6, Block 1

This is a Snap at

\$735 Pair

Good terms.

M. Humphrey & Co.
LIMITED

Room 11, Alberta Block.
Phone 2242.

Calgary City
Delivery

NMC

0031759

600B

—KEY PLAN—
CALGARY ALTA.
VOLUME SIX

CALGARY ALTA. VOL. VI
SEPTEMBER 1921

600B

Scale - 1/16 in. = 500 Ft.



See Key Plan 500B Volume Five

See Key Plan 100C Volume One

Alert This plan may not be commercially or otherwise distributed, reproduced or transmitted in any form without the specific written consent of Atlanta Land Title

Examined and approved
7th March 1911
Albert H. F. A. G.
Surveyor to the T.O.

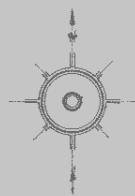
Reported for work, instrument is
daily adjusted and regulated to the Land
Train Office at 100 Oak & Adams Land
Avenue, Bureau of Biology, at the
National Museum at 3:30 p.m.
F. W. C. 9 days. Rank...
with 1st Grade 5321 and AF
238
J. H. C. 1
S. A. C.

Block "J" Being a Subdivision
B.P.U.C. 17950. 50 Hwy. 5.
Ptn. Antenna Ex. 14' 11".
Nad. 74' 1.30 AS. Nad. 103' 11" of Part of
106 m. 29 June 1980 70.30 HS.

~~West 1/4 of Sec. 10, Tp. 24, R. 1 W of S2M~~

Scale 000711%

By A. D. PATRICK
P.T.S.



I, Urban Clayton Patterson, of Calgary in the Province of
Alberta, Canada, Dominion Land Surveyor, do solemnly
swear that this plan accurately shows the amount of land in which
the land included therein has been surveyed and granted to the
Government, and that the said plan is prepared in accordance
with the provisions of the LAND TITLE ACT
passed at Calgary
this 17th day of January.

Handwritten signature: A. C. ...

5. David Glavin of Chicago is the Director of
U.S. Bureau and will interview
6. That I was practically arrested and did not @ all fight
in the entire interview. I was practically forced to
be the person named Glavin only did not accuse the
name for the purpose of causing trouble
7. That the name was mentioned in evidence and that I
am not taking any part in the trial. On this trial I am very
tired of the full page of newspaper news
before me on "Glavin"
the Director of Chicago
the City of New York } \$2.00
David Glavin

N. P. S. Diskenf

O. L. Coulbasky
 Asst. Alfred H. May
 Alfred H. May
 Owner
 South and West coast
 Alameda County
 W. H. H. H. H.
 W. H. H. H. H.

Elizabeth G. Lathrop of Calgary in the Province of

1. That I am personally present and also that Edward M. Kelly
assumed as the author the instrument after he personally brought to
me to be the person required thereby, being duly and lawfully
qualified for the purpose named therein.

2. That the same was subscribed at Chicago and that
I am a subscribing witness.

I was before me at Calgary }
 in the Province of Alberta } C. G. Leach
 from the 1st of January 1900 till

Geo. Shaw

Approved by the Council of the City of Calgary
this 13th day of February 1911
L. O. Spencer
at. cc. h.

Las. J. Chick
Cincinnati
1891

Parties outlined in Violet cancelled and designated
Black X by B.P.U. order # 13052 reg'd. at 10th
18 July A.D. 1951 as 1471 G. J.
New Cert. - 844202

8321 A F (361)



PARKDALE ADDITION IS SELLING FAST

131 Lots of the 200 Lots Placed on Sale Wednesday Morning are Still for Sale as per the Following List:

Price per Lot.
Block 39—Lots 9, 10, 11 . . . \$475
Block 40—Lots 1 and 2 . . . \$500
Block 41—Lots 3 to 4 . . . \$475
Block 42—Lots 5 to 6 . . . \$500
Block 43—Lots 7 to 8 . . . \$500
Block 44—Lots 9 to 10 . . . \$475
Block 45—Lots 11 to 12 . . . \$475
Block 46—Lots 13 to 14 . . . \$475
Block 47—Lots 15 to 16 . . . \$475
Block 48—Lots 17 to 18 . . . \$475
Block 49—Lots 19 to 20 . . . \$475
Block 50—Lots 21 to 22 . . . \$475
Block 51—Lots 23 to 24 . . . \$475
Block 52—Lots 25 to 26 . . . \$475
Block 53—Lots 27 to 28 . . . \$475
Block 54—Lots 29 to 30 . . . \$475
Block 55—Lots 31 to 32 . . . \$475
Block 56—Lots 33 to 34 . . . \$475
Block 57—Lots 35 to 36 . . . \$475
Block 58—Lots 37 to 38 . . . \$475
Block 59—Lots 39 to 40 . . . \$475
Block 60—Lots 41 to 42 . . . \$475
Block 61—Lots 43 to 44 . . . \$475
Block 62—Lots 45 to 46 . . . \$475
Block 63—Lots 47 to 48 . . . \$475
Block 64—Lots 49 to 50 . . . \$475
Block 65—Lots 51 to 52 . . . \$475
Block 66—Lots 53 to 54 . . . \$475
Block 67—Lots 55 to 56 . . . \$475
Block 68—Lots 57 to 58 . . . \$475
Block 69—Lots 59 to 60 . . . \$475
Block 70—Lots 61 to 62 . . . \$475
Block 71—Lots 63 to 64 . . . \$475
Block 72—Lots 65 to 66 . . . \$475
Block 73—Lots 67 to 68 . . . \$475
Block 74—Lots 69 to 70 . . . \$475
Block 75—Lots 71 to 72 . . . \$475
Block 76—Lots 73 to 74 . . . \$475
Block 77—Lots 75 to 76 . . . \$475
Block 78—Lots 77 to 78 . . . \$475
Block 79—Lots 79 to 80 . . . \$475
Block 80—Lots 81 to 82 . . . \$475
Block 81—Lots 83 to 84 . . . \$475
Block 82—Lots 85 to 86 . . . \$475
Block 83—Lots 87 to 88 . . . \$475
Block 84—Lots 89 to 90 . . . \$475
Block 85—Lots 91 to 92 . . . \$475
Block 86—Lots 93 to 94 . . . \$475
Block 87—Lots 95 to 96 . . . \$475
Block 88—Lots 97 to 98 . . . \$475
Block 89—Lots 99 to 100 . . . \$475
Block 90—Lots 101 to 102 . . . \$475
Block 91—Lots 103 to 104 . . . \$475
Block 92—Lots 105 to 106 . . . \$475
Block 93—Lots 107 to 108 . . . \$475
Block 94—Lots 109 to 110 . . . \$475
Block 95—Lots 111 to 112 . . . \$475
Block 96—Lots 113 to 114 . . . \$475
Block 97—Lots 115 to 116 . . . \$475
Block 98—Lots 117 to 118 . . . \$475
Block 99—Lots 119 to 120 . . . \$475
Block 100—Lots 121 to 122 . . . \$475
Block 101—Lots 123 to 124 . . . \$475
Block 102—Lots 125 to 126 . . . \$475
Block 103—Lots 127 to 128 . . . \$475
Block 104—Lots 129 to 130 . . . \$475
Block 105—Lots 131 to 132 . . . \$475
Block 106—Lots 133 to 134 . . . \$475
Block 107—Lots 135 to 136 . . . \$475
Block 108—Lots 137 to 138 . . . \$475
Block 109—Lots 139 to 140 . . . \$475
Block 110—Lots 141 to 142 . . . \$475
Block 111—Lots 143 to 144 . . . \$475
Block 112—Lots 145 to 146 . . . \$475
Block 113—Lots 147 to 148 . . . \$475
Block 114—Lots 149 to 150 . . . \$475
Block 115—Lots 151 to 152 . . . \$475
Block 116—Lots 153 to 154 . . . \$475
Block 117—Lots 155 to 156 . . . \$475
Block 118—Lots 157 to 158 . . . \$475
Block 119—Lots 159 to 160 . . . \$475
Block 120—Lots 161 to 162 . . . \$475
Block 121—Lots 163 to 164 . . . \$475
Block 122—Lots 165 to 166 . . . \$475
Block 123—Lots 167 to 168 . . . \$475
Block 124—Lots 169 to 170 . . . \$475
Block 125—Lots 171 to 172 . . . \$475
Block 126—Lots 173 to 174 . . . \$475
Block 127—Lots 175 to 176 . . . \$475
Block 128—Lots 177 to 178 . . . \$475
Block 129—Lots 179 to 180 . . . \$475
Block 130—Lots 181 to 182 . . . \$475
Block 131—Lots 183 to 184 . . . \$475
Block 132—Lots 185 to 186 . . . \$475
Block 133—Lots 187 to 188 . . . \$475
Block 134—Lots 189 to 190 . . . \$475
Block 135—Lots 191 to 192 . . . \$475
Block 136—Lots 193 to 194 . . . \$475
Block 137—Lots 195 to 196 . . . \$475
Block 138—Lots 197 to 198 . . . \$475
Block 139—Lots 199 to 200 . . . \$475

TERMS: One Third Cash, Balance 3, 6, 12, 18 Months.
St. Cars Now in Operation Through Parkdale Addition.
Automobiles at Your Service for Inspection of Property.

For Sale by the Owners

Scott & Hartrnft, Ltd.

202 Grain Exchange Building 1st St. W. . . . Telephone 3939

1912

(The Calgary Daily Herald, 6 April 1912)



Home Builder, Contractor and Investor THE GREAT BUILDING DEVELOPMENT IN **Parkdale Addition**

has only commenced. A number of Magnificent Homes have recently been built, costing from \$3000.00 to \$4000.00 each.

WATCH

the Great Building Development commencing this month. We are assured of the erection of from 30 to 50 New Homes this season, costing from \$3,000 to \$5,000 each.

The Building Restrictions insure every Home ample street frontage and grounds and only High Class Residences will be built.

Parkdale Addition

is close in, having a Street Car Service now in operation within fifteen minutes' ride of the center of the city

City Water Assured This Season

CONSIDER this Great Development, the Many Improvements, the Ideal Location, and you will at once be convinced that Parkdale Addition Lots are the best buying in the city today.

Call at Our Office

We will show you 200 of the choicest lots in Parkdale Addition, 100 of which are in the Street Car and Boulevard Blocks, and this is the first time they have been placed on sale.

Don't miss this chance to buy lots near the Boulevard, River and Street Car Line.

Call and compare our prices. Exceptionally easy terms.

FOR SALE BY THE OWNERS

Scott & Hartrnft, Ltd.

Phone 3939. P.O. Box 1367

202 GRAIN EXCHANGE BUILDING
Calgary, Alberta



THE CALGARY DAILY HERALD, SATURDAY, APRIL 6, 1912

"Here, Grandma, your cup of Fry's"

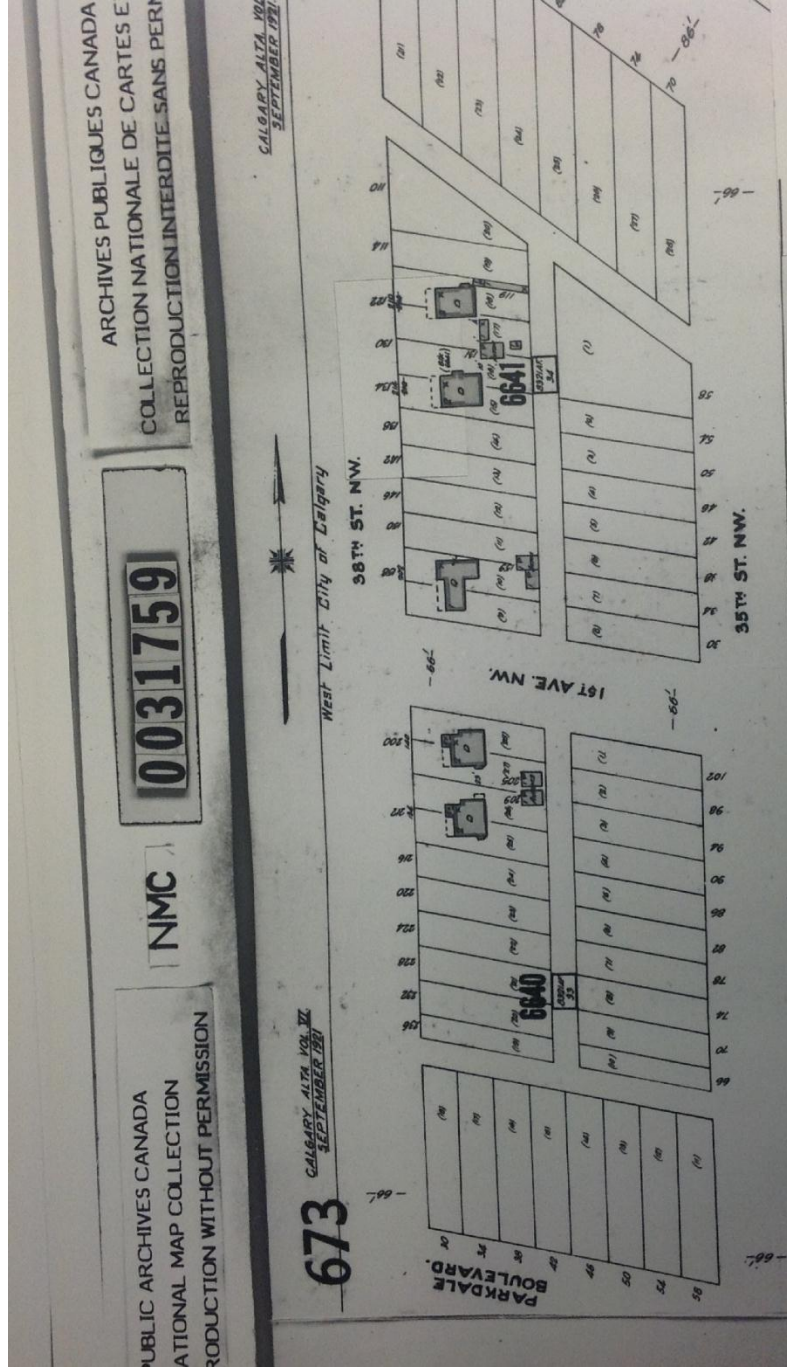
Fry's THE Cocoa

is the one beverage that delights, that nourishes, that invigorates and sustains. For FRY'S has real food value. It's a treat too good for merely "once-in-a-while". Serve it oftener. The purest and most soluble cocoa you can buy. Economical, too. Get a tin at your grocer's.

Remember: "Nothing Will Do But FRY'S"

Ask your druggist for "Fry's Malted Cocoa" the great strength builder for lambs.

1921



1922



Parkdale 1922 Aerial Photo



McKay Homestead House

37 Street, NW Calgary

#214
#210

#202
First Ave. NW Calgary

#140
#136



1924

1924 - Parkdale

Source - U of C Aerial file CA113-24

Created by Marcel Hebert Dec 2012



37 St. NW

Parkdale Blvd NW

PIGGLY WIGGLY
Wednesday Specials
BREAD 4 Loaves for 25c
BUTTER Trade Price 3 lbs. \$1.05
Local Milk Per lb. 38c
Nelson Orange Marmalade 1/2 lb. 38c
PURE LARD 1 lb. pkg. 2 for 35c
DYNAMITE Breakfast Food, Pkg. 19c
MAGIC BAKING POWDER 12 oz. tin 30c
PIGGLY WIGGLY FLOUR 40s \$1.75
CINNAMON BUNS per dozen 18c
MEAT MARKET SPECIALS
Sirloin Steak lb. 33c
Spare Ribs lb. 15c
Boneless Pot Roast lb. 19c
Pure Pork Sausage lb. 23c
ROCKY MOUNTAIN MARKETS AT
201 2nd Avenue West 100 Golden Street North
200 14th Street West 200 18th Avenue NW

**Both Rivers Have Receded
Under Flood Danger Level:
Bow at Banff Drops 9 ins.**

[illegible]

1950-1951 YEAR: 1950

1999

5 O'CLOCK EDITION

Grain Act Not Popular, Says Pool Chairman

Meets King, Wednesday



King Summons Labor Leader To Form Gov't

**RAULPH LAUREN FOR
DECISION TO RESIGN**
London Times Reports Labor
Chief of Trouble from
Following

HEAVY DAMAGE IN HIGH RIVER AREA

Rivers North and South on Rampage

**Liberals Gain New
More Seat to Bring
Voting Powers to 55**

Big Rockside Soar
Cleared Near Michael

Lava Pours
From Crater

Exhibition Grounds Under Water



On the right, the swelling (goni) behind the eye is almost fully healed and the swelling of the eyelids surrounding the cornea is nearly obliterated. The tip of the prosthesis is shown in the upper right hand corner.

1948



1949

Parkdale 1949



1951



1951



Parkdale 1951
U of C 82010 1907 #334

1951

Henderson's GREATER CALGARY Directory 1951

COMPRISING A COMPLETE STREET AND AVENUE GUIDE,
A DIRECTORY OF HOUSEHOLDERS AND HOMEOWNERS
OF THE CITY AND ADJOINING DISTRICTS, AN
ALPHABETICALLY ARRANGED LIST OF
BUSINESS HOUSES, PROFESSIONAL
MEN AND PRIVATE

37th STREET NORTH WEST
From Bow River northward.

119 Riley Gordon H Δ

119 Avery Frank C Δ

134 Wilkinson Mrs Eva D Δ

140 Grant W Hope Δ

202 McKay Herbt C ♦Δ

210 Vance Edmund Δ

210a Colclough Lt-Col Wm T Δ

214 Tregillus Sydney O Δ

SOLD ON SUBSCRIPTION ONLY

COMPILED AND PUBLISHED BY

Henderson Directories Limited

279 Garry Street, Winnipeg

1952

Henderson's

GREATER CALGARY

Directory

1952

COMPRISING A COMPLETE STREET AND AVENUE GUIDE.
A DIRECTORY OF HOUSEHOLDERS AND HOMEOWNERS
OF THE CITY AND ADJACENT TOWNS, AND
ALPHABETICALLY OF

CI **37th STREET NORTH WEST**
From Bow River northward.
119 Riley Gordon H Δ
119 Avery Frank C Δ
122 Robson Victor ΔΔ
126 Blot Mrs Myrtle Δ
134 Wilkinson Mrs Eva D Δ
140 Grant W Hope Δ
202 McKay Herbt C ΔΔ
210 Vance Edmund Δ
210a Colclough Lt-Col Wm T Δ
214 Tregillus Sydney O Δ
218 Kowalski Edw Δ
222 Adair Thos ΔΔ
226 Chapman Harold Δ
234 Chambers John B S ΔΔ
Parkdale Blvd here

ctory

VOL **LVII.**

SOLD ON SUBSCRIPTION ONLY

COMPILED AND PUBLISHED BY

Henderson Directories Limited
279 Garry Street, Winnipeg, Manitoba

Copyright, Canada, 1952, by Henderson Directories Ltd., 279 Garry St. Winnipeg

1953



1953

Calgary subdivision homebuyers. A Parkdale Nu-West bungalow sold for the low price of \$7400 in 1953 and an interest rate of 5% could be obtained through the Central Mortgage and Housing Corporation (CMHC).⁶⁶ The Parkdale show home for Howie Construction was located at 3712 Parkdale Boulevard offering a 1154 square foot three-bedroom bungalow for the full price of \$11895. A down payment of \$1950 was required with a mortgage of \$9945. A supporting salary of approximately \$4000 per year was required to approve the monthly payments of \$60.70 plus taxes. An average wage of \$60 per week made the purchase of this home design just out of reach for many wage earners.⁶⁷

60 years later

3712 Parkdale Boulevard 2012

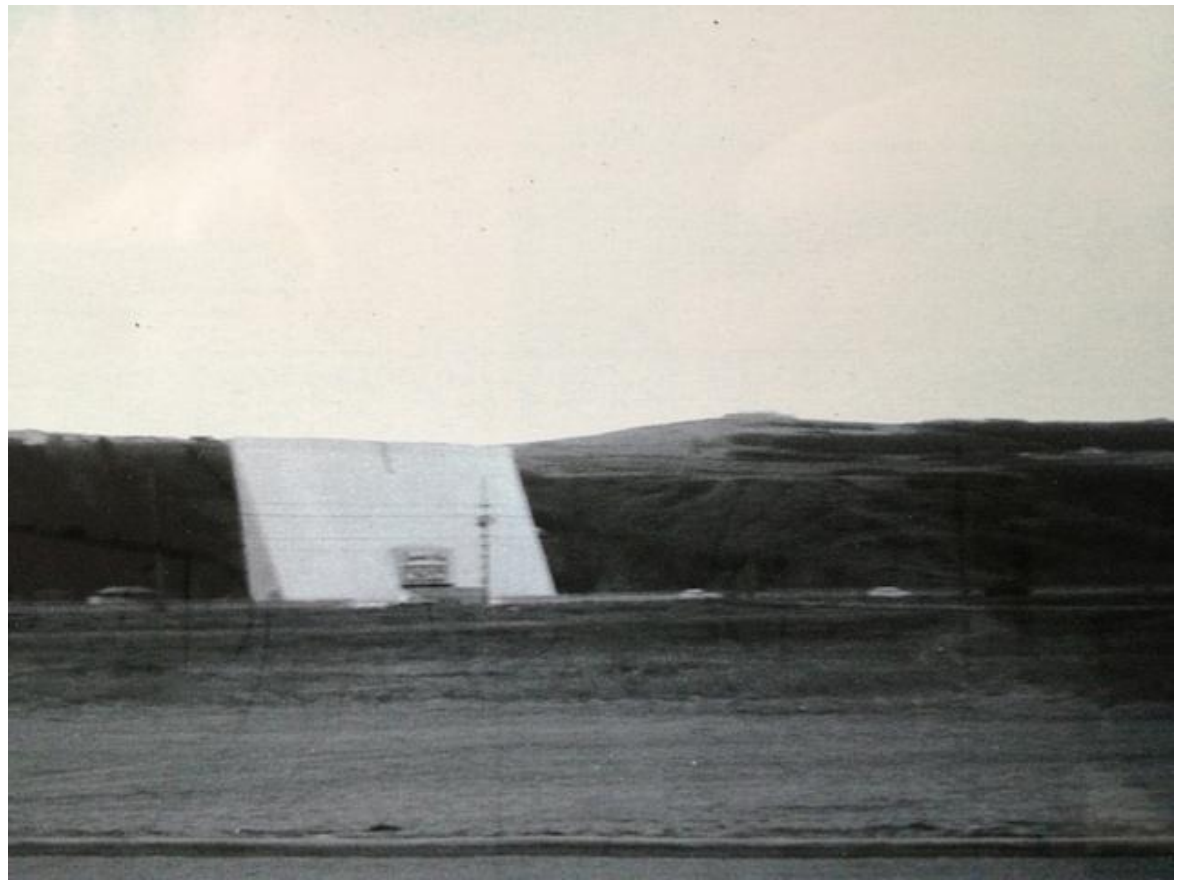
Roll Number	060104502
Location Address	3712 PARKDALE BV NW
Assessed Value	813,000
Valuation Approach	Sales Comparison
Assessment Class	Residential 100%
Property Type	Land and Improvement
Property Use	Single Residential
Taxation Status	Taxable
Community	Parkdale
Sub Neighbourhood Code (SNC)	004
Market Area	SNGLRES CORE
Sub Market Area	SNGLRES B
Land Use Designation	Residential - Contextual One/Two Dwelling
Assessable Land Area	6,497 sq. ft. / 604 sq. m. / 0.15 ac
Building Count	2
Building Type/Structure	House / Bungalow/ 1 Storey
Year of Construction	1954
Quality	Average
Total Living Area Above Grade	1,154 sq. ft. / 107 sq. m.
Basement Suite	No
Walkout Basement	No
Garage Type	Detached
Garage Area	316 sq. ft. / 29 sq. m.
Fireplace	No
Influences	River Park
Market Adjustment	No

1953



1954

The Cinema Park Drive-In was huge, parking 1,036 cars and was owned in 1956 by F.H. Kershaw. In the 1970's it was run by Famous Players. "Little Big Man" and "Sudden Terror" are playing here June 1, 1971.



Opened April 15, 1954. Advertised as Canada's Largest and Calgary's Finest. Screen measured 120x77 feet which was Canada's largest screen at that time

Cinema Park
DRIVE-IN THEATRE
TONITE and WEDNESDAY (FAMILY)
2nd Calgary Showing
DANNY KAYE *The Funniest Kays Ever!*
as *The* **Court Jester**
Clarin Johns, Angela Lansbury
Color by
TECHNICOLOR & VISTAVISION
Dennis O'Keefe in "DIAMOND WIZARD"
7:30 — Last complete program 10:00
JACKPOT BINGO!

CINEMA PARK

DRIVE-IN THEATRE ON THE BOWNESS ROAD (FAMILY)
LAST TIMES TONITE

**The Untold Story of MAJ. HOWELL BRADY
AND THE SAVAGE TRIBE HE LED!**



UNIVERSAL-INTERNATIONAL Presents
**JEFF CHANDLER
MAUREEN O'HARA**

TECHNICOLOR

WAR ARROW

with **SUZAN BALL**



FREE FREE FREE
To Every Boy and Girl Attending Opening Week
An Aeroplane Whistle.

ADMISSION PRICES

Adults ----- 70c

Youths (12-16) ----- 25c

(Tax Included)

KIDDIES UNDER 12 FREE!



GATES OPEN 6:00
1ST SHOW 7:30 — 2ND SHOW 10:20
LAST FEATURE 11:10

**"TWIN BOX OFFICES"
NO WAITING — NO TURN AWAY
PRE-SHOW ENTERTAINMENT**

Coming Monday - Tuesday "CALAMITY JANE"
In Technicolor — with Garis Day

IT'S MOVIE TIME - CINEMA PARK!

as *The* Court J

Chic Jones - Angelo Lane

Color by
TECHNICOLOR

: Dennis O'Keefe in "D
n 7:30 — Last complet
JACKPOT B

1954

Bargain of the year!

POWERS MODEL NYLONS

guaranteed first-quality - 60-gauge, 15-denier

ONLY \$100

with yellow end flap from any package
of Kraft's Parkay Margarine

There are three very nice topics ... discussed but
 being missing ... that John Foster Powers wrote
 for his famous Green Globe
 And every page has the aid of approval of one of
 the world's most famous scholars!
 These 3-page news items have the stories to
 be told ... that means they were for longer
 than 3-page items ... and they were missing!
 They're there and missing from the various
 ... you pointed for example.
 Naturally every paper to pay as much as \$1.25 a
 year ... John Foster Powers ... for only
 a fraction of this if you mail your order with the
 money order from any package of World's Greatest
 Authors Magazine.

Choice of two of the
season's smartest shades
Complete instructions
for ordering on every
Parkay package!

Postup Margarine spreads smoothly even when ice cold!

The one actually has Puffin Waggoner right from your refrigerator and on a nice and juicy hot table... of course it's actually without being a hot shot of heat. And what's more? Puffin always has a slightly Swedish. It's the Swedish language in a sense of being

KRAFT'S PARKAY MARGARINE

**New 1954
EASY SPIRALATOR
WASHING MACHINE**

WILL BE DEMONSTRATED SATURDAY
BY MEL PILSON

UP TO **\$75,000** ON HIGH-FLIGHT WALKER
You just can't afford to miss this opportunity
SEE US OR TEL

IMMEDIATE WARNING ACTION
 Incident with fire weapons, use the usual
 decontamination.

FIVE YEAR GUARANTEE

BEWARE COPYCAT WRITERS
All the latest "techniques" to create million-dollar
phantoms, you might be tempted to buy before buying
any other book, but remember, use for yourself
what "techniques" means.

ASK ON YOUR CLOTHES
The last big difference that makes all the difference.

MRS. PILSON

THE FARMERS STRIKE - Tuesday, April 13, 1934

KELVINATOR

A GREAT NAME IN REFRIGERATORS
Refrigeration Experts for Over 40 Years

IMAGINE!

at 10 Co. Ft. Deforia
1900-1901

For Only **\$529**

- Only 28" Wide
- Two Heavy Coasters
- Seven Heat Tray
- Three Bar Shelves

None For These — Quantity Limited

Other Models At Even Lower Prices

KELVINATOR DELUXE **\$259.99**
ELECTRIC RANGE Special

Handprints: Reddish-brown. Only 10" wide with
Holes: 24" - 28" diam. - 1/2" thick. - 1/2" thick.

REMEMBER: OUR BUSINESS IS BUSINESS.
ALWAYS USE OUR SERVICE THE RIGHT WAY.

NEVERLEAVE YOUR BUSINESS TO RANDOM
ALWAYS BE IN CONTROL OF THE RISK

IREDA ADRIANO

ALBERTA APPLIANCE

IPMA - 7th Ann. W.

Phone 773-455

Mid-week bargain Rail Coach Fares

GOOD GOING

TUESDAY - WEDNESDAY - THURSDAY

APRIL 20 - 21 - 22

From

CALGARY - VANCOUVER

\$24.70

You Save
\$4 P. 70

[illegible]

- **Univariate** and **bivariate** tests
- **Univariate** and **bivariate** tests

Canadian Pacific

CALCULATING THE INDEX

Admitted April 13th
to Custody

1. *Phragmites australis* (Cav.) Trin. ex Steud.

1955



1956

Regent, Mr. and Mrs. Stabo will June 17 with 6,000 vehicles with signing of the register. The plan inside in Calgary. 12,878 passengers.



DREAM FOR SALE— At a Price that'll open Your Eyes

A DREAMBOAT, that's what they're calling this stunning Buick SPECIAL. And in all truth, it is a sight for starry eyes.

But, if you think that owning a Buick is just something to dream about, here's some happy news.

Eye-catching, sight-catching as it is, this beauty is built for stirring action—and priced the same way.

To sum it up quickly:

For only a few dollars more than you'd pay for the well-known smaller cars—for even less than some models of those very same cars—you get all the big-car power and performance, the pace and the grace that are Buick for 1956. It's the taste and distinction of Buick styling. It's the walloping thrill of Buick power, surging from the new 322-cubic-inch V8 engine.

It's the level buoyancy of Buick's ride, the finger-tip ease of its handling, the sheer luxury of its interior comfort and roominess.

Here, too, if you want it, is Buick's advanced new Variable Pitch Dynaflex*. With blazing getaway and amazing gas economy, it's the last and the thriftiest word in modern transmission.

How about finding out for yourself what a bargain this Buick SPECIAL is. What a joy to command, what a sweetheart to drive. Come in this week—we'll be looking for you, to make your dreams to true.

*New Advanced Variable Pitch Dynaflex is the only Dynaflex Buick built today. It is standard on Roadmaster, Super and Century—optional at modest extra cost on the Special.

A GENERAL MOTORS VALUE

What's NEW in the '56 BUICK SPECIAL?

NEW 322-cubic-inch V8 engine of 8.9 to 1 compression ratio—highest ever for this budget-priced Series.

NEW Extra-Muscle Frame and Precision-Balanced Chassis, engineered all new from front to rear for extra-rugged roadability.

NEW Deep-Q3-Customized Luxury Ride—with all-coil springing and true torque-tube drive.

NEW Sweep-Ahead Styling—with shades of Fashion Color Harmony inside and out.

NEW Smooth-Action Brakes with Centre-Groove Linings and Suspended Pedal.

NEW Stepped-Up Gas Mileage.

NEW Interlocking Safety Latches and Safety-Arm Head Lamps.

Enjoy 4-Season Comfort in your new Buick with genuine FRIGIDAIRE CONDITIONING

Best Buick Yet

WHEN BETTER AUTOMOBILES ARE BUILT BUICK WILL BUILD THEM

CALGARY MOTOR PRODUCTS

Corner 4th Avenue and 2nd Street West

SALES: 65661

PARTS: 24933

LIMITED
SERVICE: 65661

STAMPEDE MOTORS LIMITED

"A Good Place to Know Better"

1449 - 17th AVENUE WEST

PHONE: 447466

1956



1958

Parkdale 1958
U of C 82012 1767 62



1958

New EXPRESS Super Constellation Service CALGARY - NON-STOP - TORONTO



EASTERN MERCURY leaves Calgary every midnight
arrives Toronto 8.50 a.m. LOCAL TIME
...less than 6 hours flying!



Fastest...and most luxurious, too!

Toronto is just a short overnight stop from Calgary when you fly TCA's new Super Constellation service. You take off at midnight, rest and relax on the soft cushions of your reclining seats, while the miles speed unobscured by the stars in the moonlit sky. You're ready for the upcoming breakfast brought to your seat in compliance with TCA's custom. As you glide into Toronto, you're extended and snug...with the whole day ahead of you!

Now when you go east, fly TCA's new Super Constellation service—the "Eastern Mercury". It gives you more—no meal costs, no tipping—the regular TCA fare is all you pay. Want to come back the same day? Fly the "Western Mercury" leave Toronto at 2 p.m., give you in Calgary at 5.50 p.m.

QUICK CONNECTIONS TO THE U.S.—

The overnight Calgary-Toronto service connects with TWA flights to New York, arriving at 11.55 a.m. — Chicago, arriving at 11.55 a.m. — Cleveland, arriving at 10.55 a.m.

NEW SUPER CONSTELLATION SERVICE TO VANCOUVER—the "Western Mercury". Leave Calgary every evening at 8.30 p.m., arrive Vancouver at 11.30 P.M.

See your Travel Agent or call TCA at 891311

100, 9th Ave. W., (Opposite Police Court)



TRANS-CANADA AIR LINES



A GENERAL MOTORS VALUE

A Little Vacation In Every Day!

What's it like to take the wheel of a 1958 Cadillac?

If you don't already know, then we hope you'll come with us now on a little imaginary journey in the "real of cars".

Suppose, if you will, that you're in the driver's seat. The hour is early morning as you turn from the driveway and sweep out from the house, leaving behind you.

How wonderful you feel. Those deep, luxurious cushions hold you in perfect comfort—your hands rest naturally on the slender wheel—and all about you are vision... and beauty... and luxury.

It's an inspiration just to watch the miles go by.

And how quiet and peaceful it is. The car is so smooth and silent in operation that your only sense of motion comes from the sound of the wind and from the passing landscape.

Driving? Well, what could be more relaxing! Steering... shifting... braking—all are regulated with the lightest touch of the hand. You simply lean back and enjoy the ride... and the car does all the rest.

What's it like at the wheel of a 1958 Cadillac? Well, we've heard it said that a drive in a new Cadillac isn't really a drive at all, in the normal sense of the word. It's a time for rest and pleasure and relaxation... no interlude that refreshes a man and enriches his spirit.

As one of our friends put it—"It's like having a little vacation every day!"

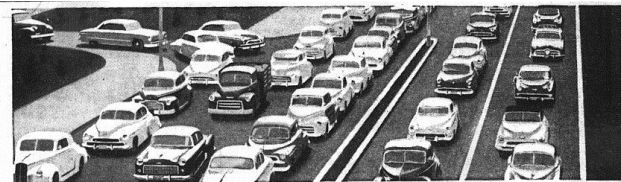
Someday soon—when the day is bright and the sun is right—we hope you'll stop in and take a little vacation of your own in a 1958 Cadillac.

We have some wonderful news waiting for you about the ease—and the economy—with which you can now make the move to this greatest of Cadillacs. Better come in and see us soon.

You can be certain of a sincere presentation of all the facts pertaining to Cadillac ownership.

CALGARY MOTOR PRODUCTS LIMITED

SALES: 65661 — PARTS: 24933 — SERVICE: 65661



Why did we pledge



the finest gasolines there are!

We did it to simplify things for you. You have no facilities for studying the composition of various gasolines...but we have. And rather than claim this feature as that ingredient we have made a solemn pledge: "We will not permit a single competitor to offer gasoline superior to our new B-A 88 and 98 gasolines." When you buy B-A you can rest assured—there is no finer gasoline available.

OUR PLEDGE

"We will not permit a single competitor to offer gasoline superior to our new B-A 88 and 98 gasolines."



THE BRITISH AMERICAN OIL COMPANY

LIMITED

1958



37 & 35 Street
1st and 2nd Ave



1959

Note the
beginning
of 16th Ave



1961

Note the beginning
preparation of
Foothills Medical
Hospital



1962

Note no Crowchild
Bridge



1962

Foothills
Medical
Center



1963



Parkdale 1963
U of C 72534



Note: University
Heights Development



1963



1968 McKay Homestead located in Point McKay



1971



Parkdale 1971



1976



Parkdale 1976

U of C 82014 1976

1976



Foothills Medical Center 1976

1978

Note: Point McKay
Townhouse Development



1979

Note: 37 St. Townhouse
Development



1979



1982

Note: Parkdale
Community
Center being
built



1993



SOD TURNING FOR PARKDALE NIFTY 50'S
EXTENSION TO HALL, MAY 10, 1993

2013

