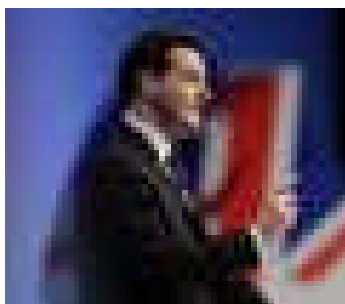




Issue 04



## Osborne to reveal £5bn for capital projects and £1bn for schools

4-Dec-2012 |

George Osborne is set to raise £5 billion for capital projects – including £1bn for free schools and academies, it has been reported.

The chancellor is set to reveal a spending squeeze in this autumn’s statement, to fund new schools, along with transport and science schemes.

It will be done by asking departments to save an extra 1 per cent next year and a further 2 per cent the following year.

It has been reported that £1bn will be released to build 100 new free schools and academies.

### Inside this issue:

Confusion over Part G building Regulations	2
CDB Ltd Act as Expert Witness	2
Full list Mini Budget Details	3
RICS Mini budget will Boost Economy	3
CDB LTD 2 year Report	4
Industry Criticizes Government over Mini Budget	4

### First schools under new £1bn spending built in autumn 2013

Local authorities will be expected to bid for a slice of the money, which will come from the 1-2 per cent savings within government departments and also departmental under-spend.

The £1bn will be separate from the £4bn announced for schools in this spending review period, and the Department for Education will have responsibility for determining which schools will qualify.

We understand that while the 100 schemes are likely to go through the academic framework, they could be procured outside them – for example through Local Education Partnerships or like certain free schools on alternate frameworks, however it is understood that the Education Funding Agency will put up an “almighty fight” if the DFE chooses to procure outside the academic framework, although not a bad idea, perhaps?

**Full list of the parts of George Osborne’s autumn statement that will affect construction see page 3, however summarised below:-**

- Replacements for ‘discredited’ PFI
- £1bn boost for roads
- Dash for gas to see 30 plants built
- More money for local enterprise partnerships
- Longer grace period for empty new buildings
- HS2 will be extended to North-west and West Yorkshire
- \* £10bn of projects ‘prequalified’ under UK Guarantees Scheme
- \* £1bn loan for Northern Line to Battersea
- \* Funding for 120,000 new homes
- \* Annual investment allowance in plant and machinery to increase
- \* Small business rate relief extended to April 2014

## STILL confusion concerning Part G of Building Regulations

Two years after the introduction of the Part G building regulations, plumbers and installers are still confused by what they are required to do by law.

It is understood that a survey, completed by over 100 plumbers and installers at PHEX Chelsea, showed that two thirds of plumbers and installers were unclear of what the building regulations entailed and two out of five had no idea what the maximum temperature of water delivered to a bath fitted with a thermostatic mixing valve (TMV) should be.

It is up to Designers to take the lead, and ensure that any Public Health Designs comply with the current regulations

The survey also exposed lack of enforcement as a serious issue, with 89 per cent of respondents calling for policing of the regulations to be made more rigorous.

More than half of those surveyed were unaware of any enforcement of the Part G building regulations since they came into force in 2010.

The regulations, which were designed to reduce the risk of bathroom scalding, make the fitting of a TMV with baths compulsory in new builds and refurbishments if the positioning of the bath has changed.

We as Design Engineers, are not surprised by the findings. The regulations present a real grey area regarding whether refurbishments fall into this category.

To us it seems ridiculous that a Thermostatic Mixing Valve (TMV) is only required in instances where the bath is moved.

The position of a bath has absolutely no relation to the risk of scalding, but the fitting of a TMV eliminates this risk completely.

The regulations left many in the industry confused as they had the potential to be a game changer, but instead Part G cover's limited ground.

It's a great shame that we have not achieved more progress with the elimination of bathroom scalding in the UK and clearly there are some issues that need to be assessed in order to improve these regulations so that they actually become effective and in our opinion, the general use of Thermostatic mixing valves to ALL, new installations to a Bath or basin within a bathroom should be implemented. The requirement however for 60 deg.C at a kitchen sink should remain with warning notices, as there will be a need for higher temperatures for cleaning /disinfecting and proper legionella control.



**Institute of Domestic Heating & Environmental Engineers**  
P O Box 329,  
Southampton, SO40 0BT, U.K.

**Tel: +44 [0] 23 80 66 89 00**

**Fax: +44 [0] 23 80 66 08 88**

**Email: [admin@idhee.org.uk](mailto:admin@idhee.org.uk)**



Take a Break—  
Good to have a sit back and  
Think DAY , Some times

**CDB CONSULTING ENGINEERS ACT AS EXPERT WITNESS for  
The Domestic Installations Registered by The IDHEE as  
Expert Witness—Office of Fair Trading**

## Complete list of the parts of George Osborne's autumn statement that will affect construction.

### Roads:

Roads ownership and financing review delayed till the new year  
Roads sector in £1bn autumn statement boost including £333m for maintenance

### Infrastructure:

Fourteen projects worth £10bn set for kick-start from UK Guarantees  
Review of Whitehall's ability to deliver infrastructure  
£1bn UK Guarantee for Northern Line extension to Battersea  
Local enterprise partnerships granted infrastructure funding powers

### Private finance:

Government to compensate failed PF2 bidders 'at its discretion'  
Government working on PF2 pipelines and centralised procurement units  
New PFI projects to cut private sector 'windfalls' but cost more  
New PFI Birmingham hospital scheme still five years away

### Education:

First schools under new £1bn spending built in autumn 2013  
Majority of new education money to be spent in 2014/15

### Energy:

Britain will see a second 'dash for gas' as 30 plants being considered to be built

### Commercial:

Empty building rate change offers 'modest relief' for commercial sector

### Business:

Capital allowances for plant and machinery to increase ten-fold to £250K  
SMEs to benefit from better relief rates and new lending bank

### Economy:

Economy and property growth predictions downgraded



**SAFETY**

**MUST and WILL**

**always come**

**FIRST**



## RICS: property rate decision 'will boost economy'

The Royal Institute of Chartered Surveyors has reported recently that the decision to extend the empty property rate exemption for new build commercial premises from October next year will help the economy.

In their opinion "This will help take the break off speculative development, provide a badly needed boost to the wider economy and help to repair our struggling high streets.

The pressure is now really on to make delivery happen and the government clearly acknowledge the key role that construction can play in wider economic recovery. More development means more housing, more jobs and better infrastructure.

4th Floor  
59 Piccadilly  
MANCHESTER  
M1 2AQ

ALSO at :-  
UNIT 12, Evans Business Centre  
Shorebury Point, Amy Johnson Way  
Blackpool. FY4 2RF

**Phone: 0845 074 0763**

**Fax: 0845 074 0764**



**WE'RE ON THE WEB**

[WWW.cdbconsulting.co.uk](http://WWW.cdbconsulting.co.uk)

PLEASE CALL US TODAY, for free  
impartial advice

CDB Consulting Engineers celebrating being in business now for over 2 years, with a team of engineers, the main parties who have been working within the building services industry each for over 30 years.

We all have a wide ranging experience across all types of building design which includes offices, retail, residential, schools, hospitals and all types of industrial buildings

We are working hard towards being in close partnership with our clients, design and contract team, offering advice from conceptual consultation through to full system design to ensure high-performance.

Having a wide experience, our personal and professional approach we offer to assist Architects, Developers, Main-Contractors, Local Council's and Health Authorities etc.

CDB Consulting will deliver a complete range of mechanical electrical & public health services from industrial engineering to HVAC, hot and cold water services, Steam and High temperature engineering, network distribution, power and lighting control.

Other services include fire protection, security systems, voice and data communications technologies, as well as consultations and services that focuses on energy efficiency.

CDB Consultants aim to provide optimal solutions that meet the requirements of the building and the client, recognizing the importance of energy efficiency and cost management

Please feel free to visit our website where more information is available

### **A number of industry figures have criticized the government for failing to support energy efficiency, address the housing shortage, and ease mortgage conditions in the Autumn Statement.**

It has been reported that Federation of Master Builders chief executive said more should have been done to support the government's Green Deal energy efficiency initiatives.

The Chartered Institute of Housing, meanwhile, is reported to have said that the chancellor did not go far enough. The Home Builders Federation told a newspaper that they hadn't been expecting new policy announcements. But A spokesman said: "We do feel that Government could have ring fenced some of the Funding For Lending money for New Buy and mortgages to address the death of mortgage lending that remains the biggest constraint on housing supply."

British Property Federation chief executive Liz Peace, meanwhile, reportedly said the absence of the widely-mooted review of Carbon Reduction Commitments was "disappointing".

Although Ms Peace welcomed the abolition of the performance league table, she said: "There appears to be an acceptance that there are deep issues with the Carbon Reduction Commitment (CRC), as industry has long-maintained."

An extension of the Support for Mortgage Interest scheme, introduced to support homeowners facing difficulties making payments, was announced in the statement.