

Be an Earth Hero!

Be Like Minna! Did you know that Minna Anthony Common was an Earth Hero?

An Earth Hero is someone who tries hard to help the Earth. Minna was an Earth Hero because she wanted to teach people about the natural world. Teaching about the outdoors creates a way to better understand wildlife. When you better understand, it is easier to help.



Do you want to be an Earth Hero?

There are many ways to be an Earth Hero. Some examples are: pick up litter, reuse and recycle trash, share your love of nature through stories or art.

Did you know ...

All Earth Heroes follow a set of outdoor manners. By following outdoor manners, you are helping the Earth. They are easy to follow; take a look!



OUTDOOR MANNERS

Know before you go-

Always study maps and weather conditions before you leave. Pack what you need to keep safe and comfortable.

Stay on the right path

Always use existing trails and campsites. Never make new paths or places to camp.

Leave what you find

Never pick flowers or other plants along the trail. Remember every plant is food for someone. If you pick a pretty flower, it won't be there for the wildlife.

Be kind to other visitors

Smile at visitors that you pass on the trail.

Pack it in, Pack it out

Packing a lunch is fun. Just remember to pack everything back. Double check to make sure you don't leave litter behind. Always get an adult's permission to pick up trash that's not yours.

Respect wildlife

Look at animals from a distance and never approach, feed, or follow them. Remember you are visiting their home.

Be careful with fire

Make a fire safely in places that are for making fires. Never leave an active fire unattended. Always have an adult help you. **Making s'mores is recommended.**

Earth Hero time for action!

EARTH HEROS HELP BATTLE THE LITTER BUG!

Trash is very gross, and very bad for the environment! As an Earth Hero it is your mission to care for the earth the best way you can. One easy thing you can do is pick up trash in places it doesn't belong.

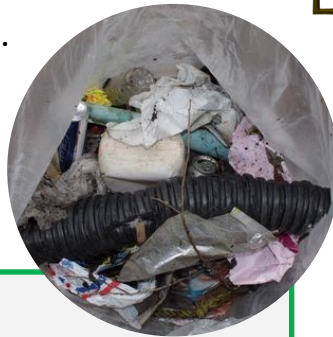
Trash in our outdoor spaces can cause many problems. Animals can accidentally eat trash and then get sick. Some animals get stuck in it, and this makes it hard to find food and they will eventually die.

Trash can also leach chemicals into the ground. This can poison the ground and ground water. Chemicals from trash are bad for everyone!

Trash will eventually decompose. But it takes a long time to break down and turn into dirt. Take a look to see how long it takes for something to decompose.

How long will it take for trash to turn to dirt?

Paper bag 2-4 weeks	Aluminum Can 200-400 years
Banana Peel 3-5 weeks	Fishing Line 600 years
Plastic Bag 10-20 years	Styrofoam 500 + years
Milk Jug 20-30 years	Glass Bottle 1,000,000 years
Tin Can 50 -100 years	
Plastic Straw 200 years	



Let's clean up, Earth Hero!

Take your trash bag and rubber gloves and pick up any trash you see. Sometimes trash can be very small, so take a hard look. If a trash item is sharp, ask an adult to pick it up.

Trash can be anywhere! It can be along a shoreline, on the sides of the road, in parking lots, along nature trails, and in neighborhoods, etc. Once you open your eyes and keep a look out, you will find litter.



Turn Trash into Art!



A fun thing to do is to take the litter you picked up and turn it into art! Take a look at this picture of a lighthouse. This was made of trash collected during our shoreline clean-up on I Love My Park Day, 2019. →

I Love My Park Day is always the first Saturday in May. All Earth Heroes are welcome to come help clean up their favorite park.

