

Take the Flat Earth Challenge

Premise of Challenge. The goal of this challenge is not to suggest that our position is proven through this one example. But rather simply to attempt to establish mutual respect between two parties that see things differently regarding a topic that is highly polarized. The unconvinced seem to display very irrational behavior surrounding this topic and then accuse Truthers of being irrational. The unconvinced accuse us of not being able to have a relationship unless people believe the way we do. But they seem to be the only ones issuing ultimatums to either stop talking about these things or THEY will end the relationship. They often suggest that we are delusional, irrational or crazy because of what we believe but we are the ones trying to challenge their beliefs with empirical evidence and we are being ignored.

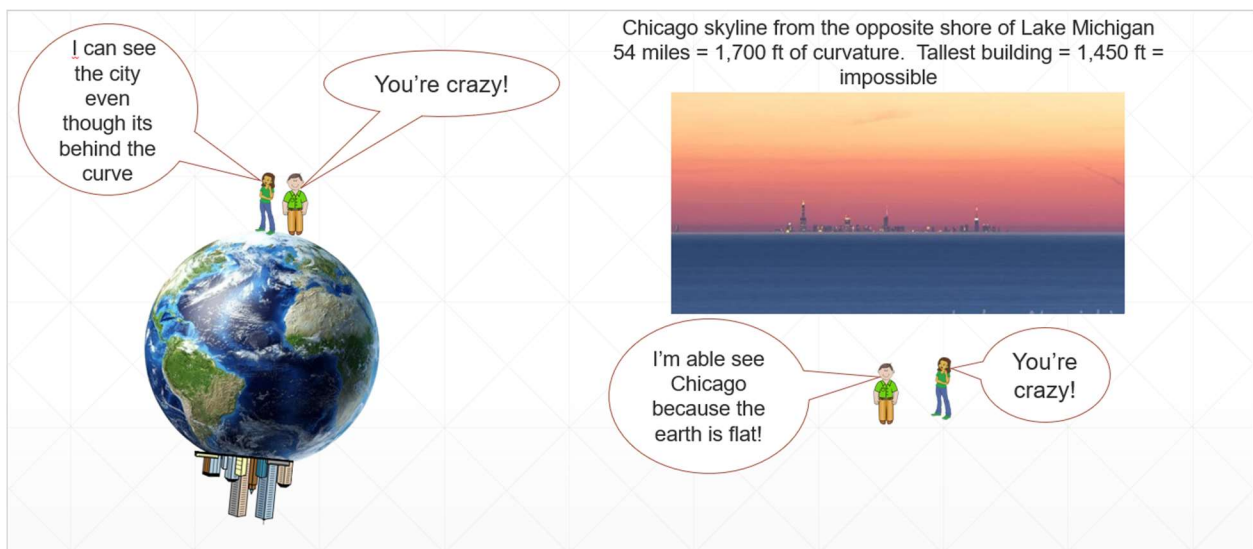
It is like a little child that throws rocks from a distance and then runs away when he is challenged. The unconvinced will regularly invoke the term Conspiracy Theory which is an un-Christ-like attempt to shame someone into silence. This is a character assassination term and is a clear violation of Jesus's warning in Matthew 5 to stop calling people Raca or Fool.

The Challenge

The challenge is very simple. Either provide a rational, scientifically based answer as to why, if the earth is round, how are you able to see the entire Chicago Skyline from the opposite shore of Lake Michigan or have enough maturity and humility to offer some sort of statement like this;

- 1) I don't have any explanation
- 2) I don't believe what you believe, but I can understand why you might believe it
- 3) I'm sorry for suggesting what you believe is crazy....would you forgive me?

- 4) DO NOT...ask a different question. Follow this question to the end and either answer it logically or admit you don't know. That's the challenge.
- 5) DO NOT....Change the subject, call the Flat Earther names, stonewall, or ignore. If you are so confident in your position that you are comfortable calling other people crazy, then you should certainly be willing and easily able to defend your position against one, simple, well researched question. What's stopping you.....hmmmmmm????



Observations

Chicago Elevation above sea level	695 Feet (Millennial Park Illinois)
Sawyer Michigan elevation above sea level	650 (6 feet tall person)

Observation level differences

The Chicago skyline elevation is approximately 45 feet higher than Millennial Park IL. Factor in an observer being 6 ft and you have a difference of 36ft

Only one of the calculators allows you to account for the height of the observer. I will use this feature to try to reconcile the differences in elevation and the height of the observer. Difference in elevation height is 45 feet. Observer height 6 ft.

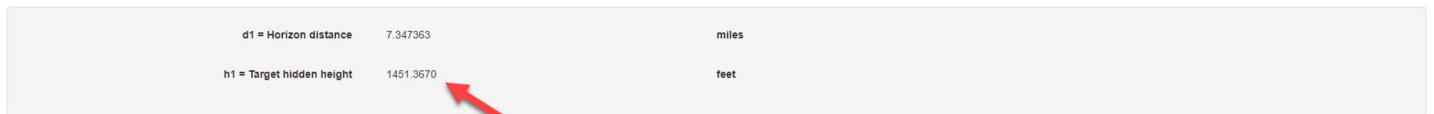
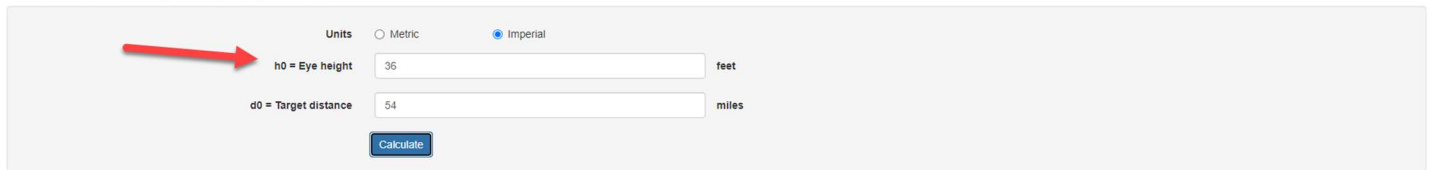
Line of sight difference +36ft

Earth Curve Calculator

This app calculates how much a distant object is obscured by the earth's curvature, and makes the following assumptions:

- the earth is a convex sphere of radius 6371 kilometres
- light travels in straight lines

The source code and calculation method are available on [GitHub.com](#)



This calculator is then set to show how much curvature there would be obscuring the target over 54 miles at virtually the exact same level (Observer + Elevation of both locations) So based on those specific parameters, the amount of curvature obstructing the Skyline would be 1,451ft. That means, all you should see is the tips of the buildings, not the entire building.

The Measurement Sources & Measurements

Source	MIT
Settings	54 Miles, 6 feet tall
Curvature Results	1536 Feet

<https://physicscalc.com/physics/earth-curvature-calculator/>

Source	PhysicsCalc.com
Settings	54 Miles, 6 feet tall
Curvature Results	1536 Feet

<https://www.omnicalculator.com/physics/earth-curvature>

Source	omnicalculator.com
Settings	54 Miles, 6 feet tall
Curvature Results	1536 Feet

<https://earthcurvature.com/>

Source	www.earthcurvature.com
Settings	54 Miles, 6 feet tall
Curvature Results	1734 Feet

<https://dizzib.github.io/earth/curve-calc/?d0=54&h0=6&unit=imperial>

Source

<https://github.com/dizzib/earthcalc>

Settings

54 Miles, 6 feet tall

Curvature Results

1,451 Feet

Three common responses that are used to try to explain this observation are;

- 1) The measurements that you are using are incorrect or inaccurate
- 2) The ability to see the entire Chicago Skyline is caused by atmospheric conditions
- 3) This particular area of the globe happens to be flat but its so large that it can still have flat areas like this and still appear perfectly round from space.

All of these are untrue and are not acceptable answers to explain why you can see the entire Chicago Skyline

Measurements are correct

The four (4) different websites shown above represent how NASA, MIT and all supposedly reputable scientific sources are measuring earth's curvature. The idea that there is now new information to suggest that all of these institutions have been measuring wrong for the last 50 years is ridiculous and is an obvious desperation move on the part of those trying to cover up the great awakening that is taking place. As you can see....all four different sources come up with virtually the same result. **Conclusion: The math is correct**

Not Caused By Atmospheric Conditions

Rob Skiba proved that it is not caused by any form of atmospheric conditions when he rented a boat and filmed the Chicago Skyline from one side to the other. The image never changed during the entire journey. This eliminates any possibility that the ability to see the skyline from behind 1,500 feet of curvature was caused by a superior Mirage, atmospheric lensing, looming or any atmospheric conditions. If it was, the image would have disappeared at some point during his trip and then the Skyline would have come back into view, base 1st and then the rest of the buildings as he drew closer. This never happened. The Skyline was in view the whole time.

Boat Trip Video

https://www.youtube.com/watch?v=o37t6iBS_q4

Since the amount of atmospheric refraction is a function of the [temperature gradient](#), [temperature](#), [pressure](#), and [humidity](#) (the amount of [water vapor](#), which is especially important at mid-[infrared](#) wavelengths), it is difficult to project how much refraction is possible. Surveyors, will often schedule their observations in the afternoon, when the magnitude of refraction is least.

Atmospheric refraction becomes more severe when temperature gradients are strong, and refraction is not uniform when the atmosphere is heterogeneous, as when [turbulence](#) occurs in the air. This causes suboptimal [seeing](#) conditions, such as the [twinkling](#) of [stars](#) and various deformations of the [Sun](#)'s apparent shape soon before [sunset](#) or after [sunrise](#).

These observation are further evidence that atmospheric conditions that could cause the skyline to be seen would not be in operation 24/7. As a result, they must be ruled out as the reason the skyline is visible.

Additionally, a superior mirage occurs when there is a **temperature inversion**; the air below the line of sight is colder than the air above it. Passing through the temperature inversion, the light rays are bent down, and so the image appears above the true object, hence the name superior. These conditions are rare and are not present 24/7. The ability to see the Chicago Skyline from the opposite shore of Lake Michigan is something that hundreds of people report they can do 24/7. This proves that the ability to see the skyline is not caused by atmospheric conditions. **Conclusion. The ability to see the Skyline is NOT caused by atmospheric conditions.**

Earth is flat here and everywhere

One explanation as to why you can see the Chicago Skyline is because it actually is flat in this particular area, but the earth is still round overall.

But there isn't one scientific experiment that has successfully measured curvature. It's flat everywhere you look. I chose this particular location because it's so well documented. But you can do this everywhere you go. On a clear night, Lighthouses can be seen from 50 miles away This would be impossible on a round earth.

Declassified rail gun demonstrations showed a projectile traveling on a perfect straight line for over 50 miles and hitting a target. That would be impossible on a round earth

So here's another example just to dispel the idea that the earth is round except at Lake Michigan.

Here is a peer reviewed study by

- 1) Department of Geography, Texas State University, San Marcos, Texas
- 2) Department of Geography, Arizona State University, Tempe, Arizona

<https://www.usu.edu/geo/geomorph/kansas.html>

Using modern surveying equipment...they set out to measure the earth's curvature over 400 miles of Kansas.

The results of this study is that the earth over 400 miles was “flatter than a pancake.” There should have been over 19 miles of curvature and there was none.

[HOME](#) > [ARCHIVES](#) > [PAPERAIR](#) > [VOLUME 9-ISSUE 3](#) > Kansas Is Flatter Than a Pancake



Kansas Is Flatter Than a Pancake

by [Mark Fonstad](#)¹, [William Pugatch](#)¹, and [Brandon Vogt](#)²

1. Department of Geography, Texas State University, San Marcos, Texas
2. Department of Geography, Arizona State University, Tempe, Arizona

In this report, we apply basic scientific techniques to answer the question “Is Kansas as flat as a pancake?”

While driving across the American Midwest, it is common to hear travelers remark, “This state is as flat as a pancake.” To the authors, this adage seems to qualitatively capture some characteristic of a topographic geodetic survey². This obvious question “how flat is a pancake” spurred our analytical interest, and we set out to find the ‘flatness’ of both a pancake and one particular state: [Kansas](#).

A Technical Approach to Pancakes and Kansas

Barring the acquisition of either a Kansas-sized pancake or a pancake-sized Kansas, mathematical techniques are needed to do a proper comparison. Some readers may find the comparing of a pancake and Kansas to be analogous to the comparing of apples and oranges; we refer those readers to a 1995 publication by NASA's Scott Sanford³, who used spectrographic techniques to do a comparison of apples and oranges.

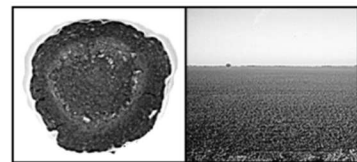


Figure 1. (a) A well-cooked pancake; and (b) Kansas.¹

Here is the typical Flat Earth debunked narrative (Its all lies)

There are no specific statements only generalities and lies.

<https://flatearth.ws/curvature-calculation>

Flat-Earthers like to use the visibility of a distant object to prove Earth's curvature does not exist.

Yes...we do...because its easy to do...anyone can do it. And you don't have to have a PHD to understand it like they will always lead you to believe

Very often, they failed to account for observer's height and atmospheric refraction,

I have accounted for both of these

or make other mistakes, like unit conversions errors, distance calculation errors, etc.

Unless all 4 calculators are making conversion errors than this has been addressed also

Once all are considered for, and mistakes are fixed, everything will be consistent with spherical Earth.

Woa! What? How did you jump to that conclusion. All the "science" points to flat stationary NOT round spinning. This statement is scientism. Scientism is pre meditated lies put forward like it's established science. Like the picture of the monkey to the man.

His statement is incorrect and completely unsupported by the empirical evidence. He's lying.

The most common error is not taking the observer's height into account.

I have done this and also considered the possible difference in elevation above sea level. Something that the PHD has left out

They would only calculate drop from the horizontal plane. It doesn't matter if they are using engineering grade AutoCAD 2016 with 15 digit precision, the numbers will be incorrect if the geometry is wrong in the first place.

The second most common error is not accounting for atmospheric refraction. Atmospheric refraction will usually bend light to follow the curvature of the Earth to a point, and causes objects to appear higher above the horizon than they physically are. Atmospheric refraction can reveal objects that are physically behind the horizon.

This is appeals to authority....advanced math talk or the suggestion that these things are outside of our expertise. Things that are too difficult for us to understand so don't even try. Well...all of the math is done for us by the calculators so we can skip this attempt at intimidation.

This statement is a huge exaggeration and very unscientific. Do you really believe that atmospheric conditions would allow you to see around corners. It may be a variance of 1-2% but not 100%

The only thing that could do that is a rare phenomenon called a superior Mirage. Its rare, and usually the image is inverted. But it certainly would not remain in your view if you were to rent a boat and film all the way across the lake like Rob Skiba did

It should be pointed out that atmospheric refraction is not constant. It depends on the weather condition. The amount of refraction can vary even in a single day.

This statement proves the flat earth hypothesis because the testimony of many is that you can see Chicago 24/7 weather permitting

Once everything is accounted for, and all the mistakes are corrected, everything will be consistent with the spherical Earth model. Every single time.

Well.....I accounted for everything he said.....all the mistakes are corrected and everything is consistent with a **flat stationary earth just like the bible says**

The fact that its very unlikely that the central planners could pull off a hoax like this is NOT proof. That is conjecture. Empirical evidence that is observable, measurable and repeatable is proof. PERIOD

Here is the challenge

Either provide a rational, scientifically based answer as to why you are able to see the entire Chicago Skyline from the opposite shore of Lake Michigan or offer some sort of statement like this;

- 6) I don't have any explanation
- 7) I don't believe what you believe, but I can understand why you might believe it
- 8) I'm sorry for suggesting what you believe is crazy....would you forgive me?